

EDIFIER

Extreme Connect

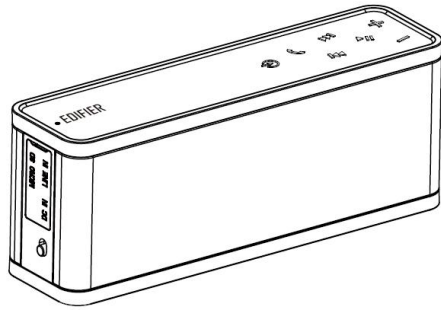
MP260

Portable Multimedia Speaker

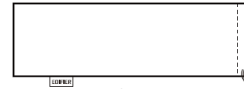
User manual | Manuel d'utilisateur | Manual de usuario | Bedienungsanleitung | Manuale dell'utente



Box contents



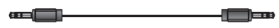
User Manual



Carrying bag



USB-Micro USB cable



3.5mm audio cable

Contents

English -----

Français -----

Español -----

Deutsch -----

Italiano -----

Português -----

Page 3 Important safety instructions

WARNING: To reduce the risk of fire or electric shock, do not expose this apparatus to rain or moisture.

1. Keep these instructions.
2. Follow all instructions.
3. Do not use this apparatus under water.
4. Clean only with dry cloth.
5. Do not install near any heat sources such as radiators, heat registers, stoves, or other apparatus (including amplifiers) that produce heat.
6. Only use attachments/accessories specified by the manufacturer.
7. Refer all servicing to qualified service personnel. Servicing is required when the apparatus has been damaged in any way, such as power-supply cord or plug is damaged, liquid has been spilled or objects have fallen into the apparatus, the apparatus has been exposed to rain or moisture, does not operate normally, or has been dropped.

Note: There is a built-in rechargeable lithium-ion battery in the speaker. Danger of explosion if disassemble the speaker. The speaker shall not be placed close to excessive heat such as fire or the like.

FCC Caution:

"Changes or modifications not expressly approved by the part responsible for compliance could void the user's authority to operate the equipment."

FCC statement:

"This device complies with Part 15 of the FCC Rules. Operation is subject to the following two conditions:

- (1) this device may not cause harmful interference, and
- (2) this device must accept any interference received, including interference that may cause undesired operation."

Page 4 Important safety instructions

"This equipment has been tested and found to comply with the limits for a Class B digital device, pursuant to part 15 of the FCC Rules.

These limits are designed to provide reasonable protection against harmful interference in a residential installation. This equipment generates, uses and can radiate radio frequency energy and, if not installed and used in accordance with the instructions, may cause harmful interference to radio communications. However, there is no guarantee that interference will not occur in a particular installation.

If this equipment does cause harmful interference to radio or television reception, which can be determined by turning the equipment off and on, the user is encouraged to try to correct the interference by one or more of the following measures:

- Reorient or relocate the receiving antenna.
- Increase the separation between the equipment and receiver.
- Connect the equipment into an outlet on a circuit different from that to which the receiver is connected.
- Consult the dealer or an experienced radio/TV technician for help."

IC statement:

This device complies with Industry Canada license-exempt RSS standard(s). Operation is subject to the following two conditions:

- (1) this device may not cause interference, and
- (2) this device must accept any interference, including interference that may cause undesired operation of the device.

This Class **【B】** digital apparatus complies with Canadian ICES-003.

Cet appareil s'accorde avec Industrie Canada licence-exempte RSS standard.

- (1) cet appareil ne peut pas causer l'intervention, et
 - (2) cet appareil doit accepter de l'intervention, y compris l'intervention qui peut causer l'opération non désirée de.
- Cet appareil numérique de la classe B est conforme à la norme NMB-003 du Canada.



Use only with the cart, stand, tripod, bracket, or table specified by the manufacturer, or sold with the apparatus. When a cart is used, use caution when moving the cart/apparatus combination to avoid injury from tip-over.



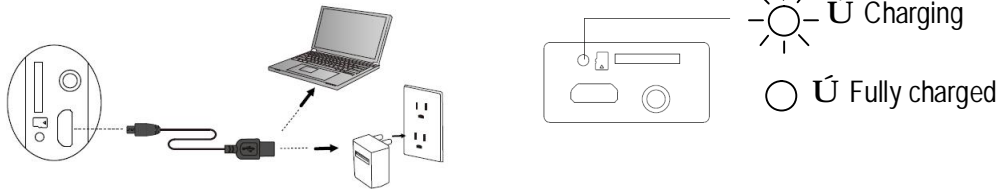
Correct Disposal of this product. This marking indicates that this product should not be disposed with other household wastes throughout the EU. To prevent possible harm to the environment or human health from uncontrolled waste disposal, recycle it responsibly to promote the sustainable reuse of material resources. To return your used device, please use the return and collection systems or contact the retailer where the product was purchased. They can take this product for environmental safe recycling.

Page 5 Charge and Power on Extreme Connect



Charge Instructions

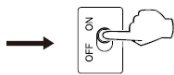
Charging



- ☰ Using the USB-Micro USB cable, connect the speaker to a USB power source on a computer or USB AC adapter.
- ☰ Please fully charge the speaker before the first time use (about 6 hours).

Note:

To ensure a full charge and for optimal audio playback, please fully charge the EDIFIER Extreme Connect once a month.

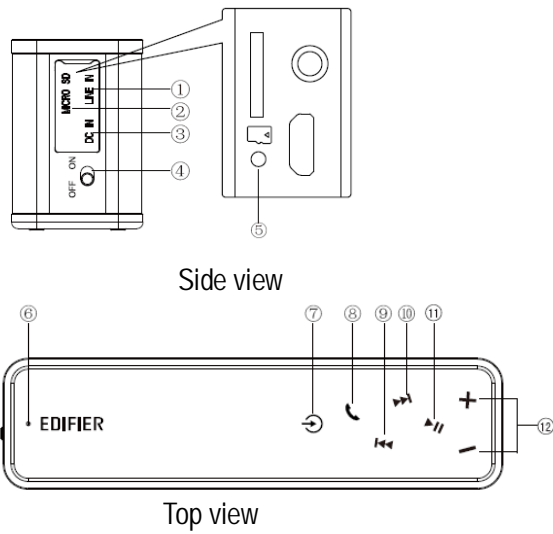


☰ Slide the power switch from OFF to ON, the Power/Input LED light is now on.

Note: 1. An indicator tone will sound when the volume has reached its maximum output level.

2. You will also hear an indicator tone when the speaker is turned on, connected or disconnected from a Bluetooth device, and when the battery voltage is low.

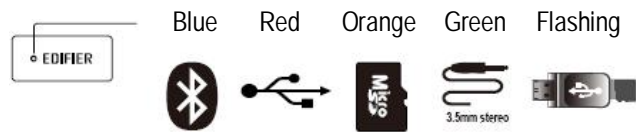
Page 6 Illustrations



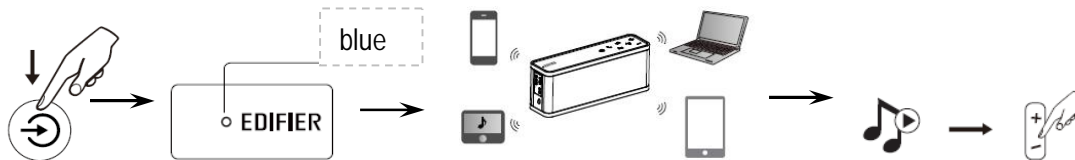
1. Power On/Off switch
2. Micro USB connector port
3. Micro SD card slot (Micro SD card not included)
4. AUX input port
5. Charging indicator
6. Power/Input LED indicator
7. Audio input selector
8. Bluetooth phone key (see page 7 for detail)
9. Previous track/folder
10. Next track/folder
11. Play/Pause
12. Volume up/down

Note: ⏮⏭⏩ are only available in Bluetooth and Micro SD input mode.

Input indicator

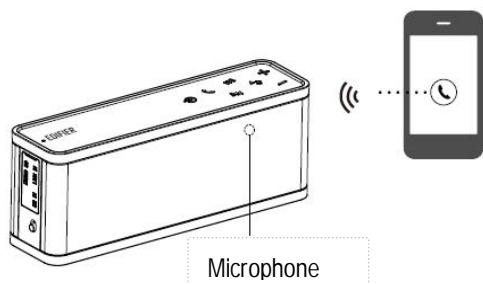


Page 7 Operational guide





- ⌵ Press ⏻ until the power/input indicator is blue.
- ⌵ Set your Bluetooth enabled device to search and pair “EDIFIER Extreme Connect”.
- ⌵ Play the music on the paired device and adjust the volume to a desired level.


Bluetooth speaker phone




EDIFIER Extreme Connect can be used as a wireless speakerphone.
 Note: The built-in microphone only works when your phone is connected via Bluetooth.

Answer incoming phone call---- Press  once

Hang up (end) the phone call ----Press  once

Decline (reject) the incoming phone call ----Press & hold 

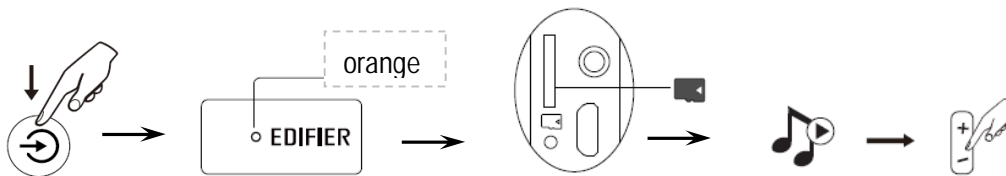
Switch conversation to your mobile phone from the “EDIFIER Extreme Connect” ----Press & hold 

Note: 1. Incoming and outgoing calls will interrupt audio playback.

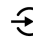
2. To enjoy the full Bluetooth functions of this product, please ensure your mobile device has A2DP & AVRCP profile.

3. PIN code for connection is “0000” if needed.


Page 8 Operational guide



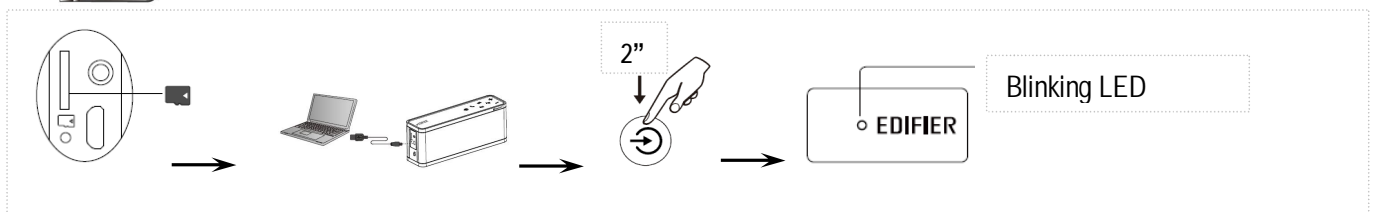
↳ Connect Micro SD card (MP3 or WMA format, Max. 32GB) to the Micro SD card slot.

↳ Press  until the power/input indicator is orange.

↳ Press play on the Extreme Connect to play the stored music and adjust the volume to a desired level.


—Press  to play previous/next track

—Press & hold  for approximately 2 seconds to play the previous/next folder




↳ Insert the micro SD Card into the SD slot;

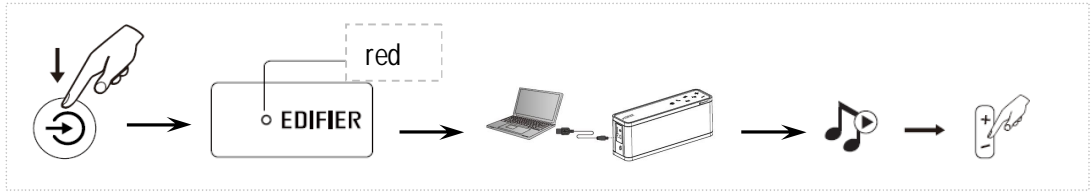
↳ Connect the speaker to your PC using the USB-micro USB cable;

↳ Press and hold  to set the system into Micro SD card reader mode. The LED is blinking. If an audio track is playing, it will automatically pause.

↳ Use your PC to access the Micro SD card.

↳ Press and hold  again to exit to the SD Card playback mode, the paused track (if still there) will continue to play.

 USB audio input



Press  until the power/input indicator is red.

Connect the EDIFIER Extreme Connect to the PC or laptop using the included USB connecting cable, open audio medium and play. Adjust the volume to a desired level.

Note: You may need to access your system settings on your computer to choose the “EDIFIER Extreme Connect” as your sound output device.

USB audio Instruction for Mac Users

Step 1:  Connect the EDIFIER Extreme to your Mac using the USB cable.

Step 2:   On your Mac, click on “System Preferences” and select the “Sound” icon.

Step 3:  In the menu bar select “Output”

Step 4: Select the device for sound output “EDIFIER Extreme Connect”.

Step 5: Close “System Preferences”

Step 6: Open audio medium and play. Adjust the volume to a desired level.

Choose a device for sound output	
Name	Type
Internal Speakers	Built-in Output
USB Audio Device	USB

USB audio Instruction for PC Users (Windows 7)

Step 1:  Connect the EDIFIER Extreme to your PC with the USB cable.

Step 2:  Go to “Control Panel”, and then click on “Hardware and Sound”.

Step 3:  In “Hardware and Sound”, select “Sound (Manage audio devices)”.



Step 4: On the “pop-up window”, select “Speaker” with “EDIFIER Extreme Connect”.

Step 5: Then click the option box next to “Set Default” and select “Default Device”.

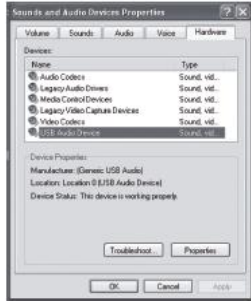
Step 6: Open audio medium and play. Adjust the volume to a desired level.

USB audio Instruction for PC Users (Windows XP)

Step 1:  Connect the EDIFIER Extreme to your PC with the USB cable.

Step 2:  →  →  Click “Start” ∪ “Setting” ∪ “Control Panel”

Step 3:  →  Click “Sounds, Speech, and Audio Devices” ∪ “Sounds, and Audio Devices”

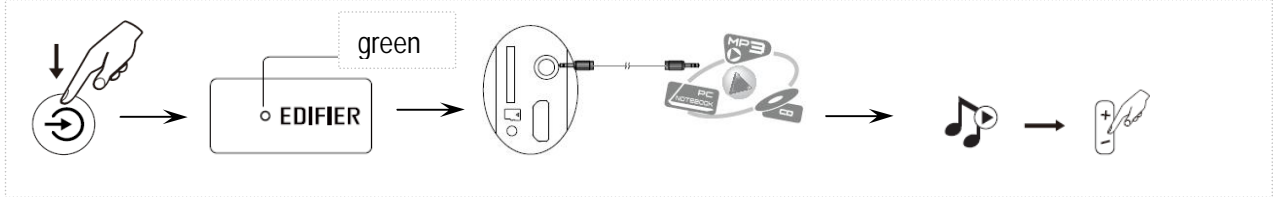



Step 4: Set the Hardware: “EDIFIER Extreme Connect”, then click “OK”.
 Step 5: Open audio medium and play. Adjust the volume to a desired level.

Page 10 Operational guide



3.5mm Stereo line-in



- ∪ Press  until the top indicator is green.
- ∪ Connect the 3.5mm-3.5mm Audio cable to the “LINE IN” port.
- ∪ Play the connected device and adjust the volume to a desired level.

Page 11 Technical information

- Power output: RMS 2W × 2 (THD+N=10%, f₀=1KHz)
- Signal to noise ratio: ≥85 dBA
- Frequency response: 190Hz~18KHz (@±/-6db)
- Input sensitivity: 500mV ± 50mV (THD+N=1%)
- Adjustment: Buttons on the top of speaker
- Input type: Bluetooth/Micro SD/USB audio/AUX (3.5mm stereo)

Micro SD card specification:

- MAX capacity: 32GB
- Disk Format: FAT32

Folder depth:	7 classes
File format:	MP3/WMA
Bluetooth Specification:	
Version:	V2.1+ EDR
Supposed profiles:	A2DP, AVRCP
Max transmit range:	10M or 30FT
Speaker Specification:	
Active drivers:	2 × 1¾ inch (48mm), magnetically shielded, 4ohm
Passive driver:	50mm × 90mm
Product Dimension:	159.4(W) × 61(H) × 42(D) mm
Net Weight:	Approx. 0.42kg
Gross Weight:	Approx. 0.56kg

Page 12 Troubleshooting

- Ensure the EDIFIER Extreme Connect is fully charged.
- Switch the EDIFIER Extreme Connect off then on and reconnect to the audio source.
- Ensure the audio format of the music in your Micro SD card is MP3 or WMA.
- Ensure Bluetooth function is enabled compatible on your Bluetooth devices.
- Move the devices closer and retry the connection.
- When connect via Bluetooth®, it's best to turn the volume fully up on both your device and the speaker.
- Try another Bluetooth device for connection.
- If pairing with a laptop or a computer, please select the EDIFIER Extreme Connect as the audio output device.
- When connected via 3.5mm stereo input, your phone/device may distort the audio signal if turned up too loud. Turn down the volume on your phone/device before adjusting the volume on EDIFIER Extreme Connect.

If you have any further questions or concerns regarding Edifier Products...

Asia, Europe, Oceania:

🌐 Please visit our website at: www.edifier.com, or email Edifier Support for further assistance at: main@edifier.com,

👤 Dear Customer, thank you for purchasing this Edifier product. For the Edifier warranty applicable for this product, we refer you to the Edifier website www.edifier-international.com/warranty-terms.

Canada/USA/Mexico: www.edifier.ca, Email: service@edifier.ca

☎ If you prefer, you may contact us by phone, Toll Free: 1-877-EDIFIER (334-3437) in Canada, 1-800-688-7406 in US.

South America: Please visit www.edifier.com (English) or www.edifierla.com (Spanish/Portuguese) for detailed local contact information.