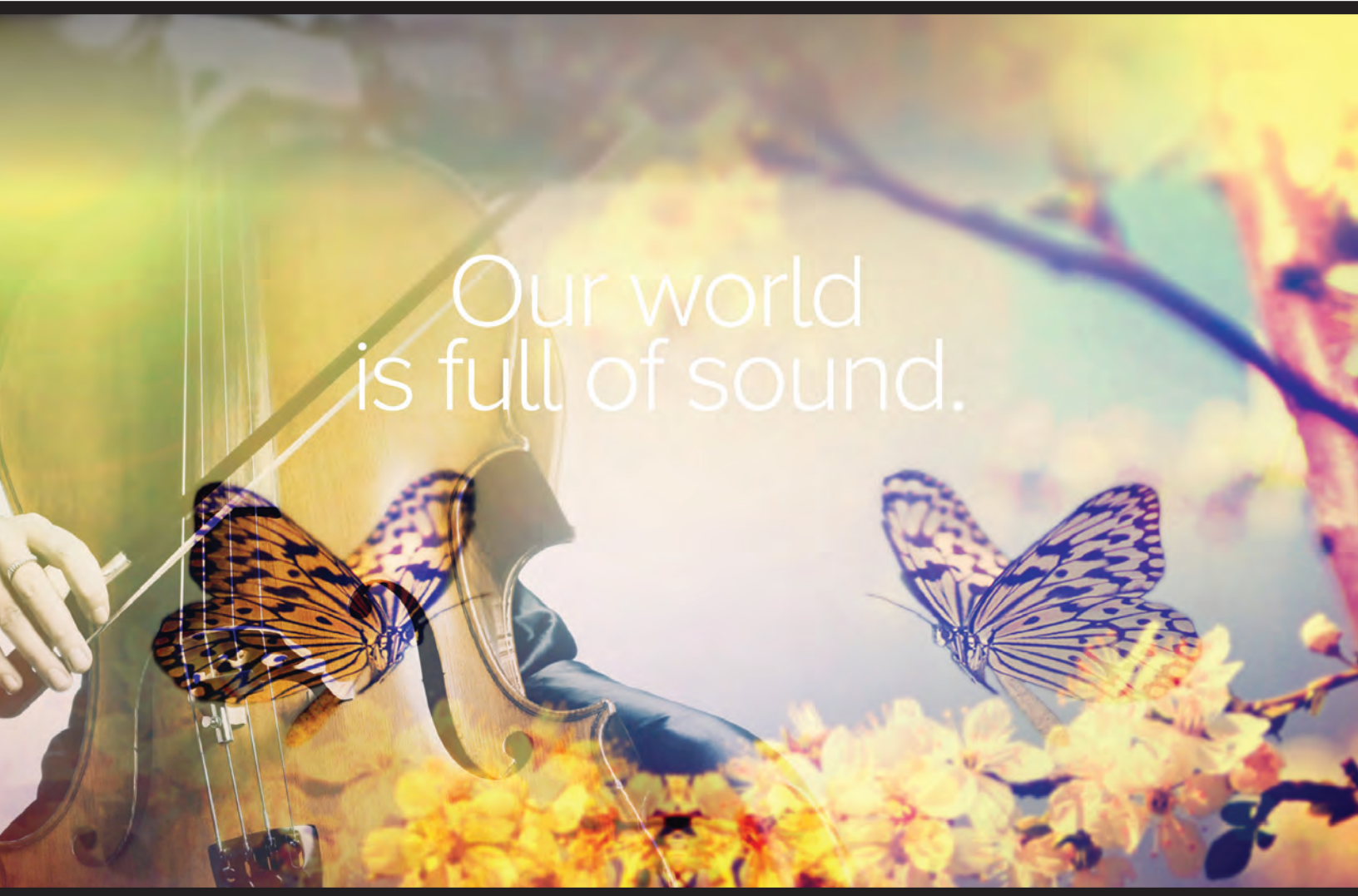


ELAC The life of sound.



Expect innovation.



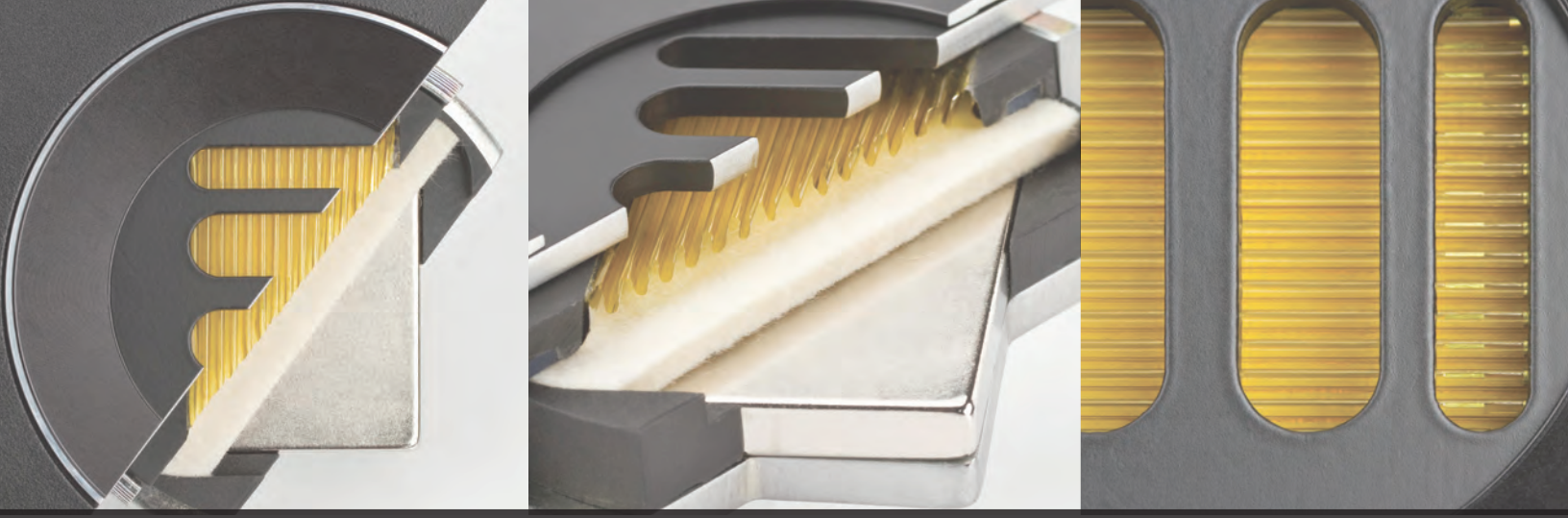


Table of Contents

Debut.....	3 - 5
Uni-Fi.....	6 - 7
Uni-Fi Slim.....	8 - 9
Line 240.3.....	11 - 13
Line 260.....	14 - 15
Line 300.....	16 - 17
Line 400.....	18 - 19
Line 500.....	20 - 21
Line 4PI / TS3030.....	22 - 23
Debut Subwoofers.....	24 - 25
Line 2000.....	26 - 27
In-Ceiling Speakers.....	28 - 29
About Us.....	30
On-Wall Speakers.....	31 - 33
Discovery Music Server.....	34 - 35



Debut by Andrew Jones

A famous name joins a world-class brand.



FEAL



A family of performers.

Every Debut loudspeaker system establishes a value proposition—with build quality and spectacular performance—that goes beyond every other speaker in its class.

ELAC's chief engineer **Andrew Jones** explains how Debut speakers break new ground: "The ELAC Debut series delivers superior performance thanks to custom made key components, with no off-the-shelf parts. Unlike many more expensive speakers that mix parts-bin drivers, bare-bones crossovers and generic cabinets—every ELAC speaker is built from a clean-sheet design."

Debut by Andrew Jones.



F5 & F6
Floorstanding Speaker
The Benchmark

B4/B5/B6
Bookshelf Loudspeaker
Less is More

The Debut floorstanding loudspeakers are a great choice for a serious two-channel rig or as the nucleus of a multi-channel setup, thanks to its custom drivers and 3-way, bass-reflex design. Add a Debut powered subwoofer and you have a serious, full-range system that delivers sound that's in the big league.

Does the Debut series change the game for bookshelf speakers? Absolutely. It's not just the size-to-performance ratio of these 2-way, bass reflex marvels that sets a new standard. The Debut series may be the best value in the world of affordable speakers, with sound that surpasses speakers costing many times more.

	F5 Specs	F6 Specs	B4 Specs
Enclosure Type.....	3-way bass reflex	3-way bass reflex	2-way bass reflex
Frequency Response.....	42 Hz - 20000 Hz	39 Hz - 20000 Hz	48 Hz - 20000 Hz
Nominal Impedance.....	6 Ω	6 Ω	6 Ω
Sensitivity.....	85dB @ 2.83v/1m	87dB @ 2.83v/1m	84.5dB @ 2.83v/1m
Crossover Frequency.....	100 Hz/3000 Hz	100 Hz/3000 Hz	2500 Hz
Maximum Power Input.....	140 Watts	150 Watts	80 Watts
Tweeter.....	1-inch cloth dome	1-inch cloth dome	1-inch cloth dome
Woofers.....	3 x 5.25-inch aramid fiber	3 x 6.5-inch aramid fiber	4-inch aramid fiber
Cabinet.....	CARB2 rated MDF	CARB2 rated MDF	CARB2 rated MDF
Cabinet Finish.....	Black brushed vinyl	Black brushed vinyl	Black brushed vinyl
Port.....	3 x Dual flared	3 x Dual flared	Dual flared
Binding Posts.....	5-way metal	5-way metal	5-way metal
Dimensions (WxHxD).....	7.87" x 38" x 8.75"	8.5" x 43" x 10"	7" x 11.5" x 8.5"
Net Weight (Each).....	32.8 lbs	46.7 lbs	9.25 lbs

Debut Features

Custom-Designed Drivers with Aramid-Fiber Cones

Aramid fiber is employed in the woofers of all ELAC Debut passive speaker systems. Aramid fiber offers a superior strength-to-weight ratio and improved damping characteristics over conventional paper or plastic drivers. This added strength means arriving at designs that achieve a broader bandwidth with smoother response.

Silk-Dome Tweeter with Deep-Spheroid Custom Waveguide

The waveguide surrounding the new ELAC high-frequency driver features a custom, deep spheroid profile to improve directivity control and shield the dome tweeter from cabinet diffraction modes inherent in traditional box enclosures.

Intricate Crossover

A custom multi-element crossover with high-grade components in each speaker ensures smooth transition between the drivers.

Debut by **Andrew Jones.**



C5
Center Channel Speaker
 Surround-sound sensation

To make a life-sized impression, a full-blown surround system needs a center channel just as formidable as the main speakers. The Debut C5 is a 2-way, bass-reflex design that paints a majestic sonic picture to make movie soundtracks and music come alive with a realism ordinarily reserved for systems costing significantly more.



A4
Dolby Atmos® Module
 Three-dimensional

Dolby Atmos® technology expands the sonic landscape, creating a true 3-D space that you've got to hear to believe. With Dolby Atmos-enabled AV receivers and processors, simply add the Debut A4 to the top of your bookshelf or floorstanding speakers to achieve dimensionality that puts you in the middle of the music and the action.

B5 Specs	B6 Specs	C5 Specs	A4 Specs
2-way bass reflex	2-way bass reflex	2-way bass reflex	Sealed
46 Hz - 20000 Hz	44 Hz - 20000 Hz	48 Hz - 20000 Hz	180 Hz - 20000 Hz
6 Ω	6 Ω	6 Ω	6 Ω
85dB @ 2.83v/1m	87dB @ 2.83v/1m	87dB @ 2.83v/1m	85dB @ 2.83v/1m
3000 Hz	3000 Hz	3000 Hz	5000 Hz
120 Watts	120 Watts	120 Watts	80 Watts
1-inch cloth dome	1-inch cloth dome	1-inch cloth dome	1/2-inch polymer dome
5.25-inch aramid fiber	6.5-inch aramid fiber	2 x 5.25-inch aramid fiber	4-inch aramid fiber
CARB2 rated MDF	CARB2 rated MDF	CARB2 rated MDF	CARB2 rated MDF
Black brushed vinyl	Black brushed vinyl	Black brushed vinyl	Black brushed vinyl
Dual flared	Dual flared	Dual flared	n/a
5-way metal	5-way metal	5-way metal	5-way metal
7.87" x 12.75" x 8.75"	8.5" x 14" x 10"	18.75" x 7.87" x 8.75"	7.87" x 4.838" x 8.75"
11.5 lbs	14.3 lbs	18 lbs	5.5 lbs

Debut Features

Superior Build Quality

Count the parts and look at them closely. These don't look like the components that go in such competitively priced speakers, but rather, speakers that cost much more.

Robust Cabinets

Every ELAC enclosure is engineered for the long run with thick MDF outer walls and a luxurious textured vinyl finish. The cabinet of the F6 incorporates specially designed internal bracing to add stiffness and strength to the cabinet's outer walls. This bracing greatly reduces cabinet vibration, which causes unwanted coloration to the sound. ELAC believes that the only parts of a speaker that should be moving are the speaker drivers themselves.

Uni-Fi series by Andrew Jones.

A new chapter in coherent
concentric sound.



Introducing the ELAC Uni-Fi series. It's what happens when Andrew Jones accepts the challenge of creating loudspeakers that deliver the value of Debut in an even higher-performance package. For the first time in ELAC's history, the superiority of a concentric driver comes to an affordable family of loudspeakers.

ELAC's chief engineer explains how Uni-Fi speakers build on a new foundation: "My goal with the Uni-Fi series was to create a line of speakers with technology and performance normally reserved for speakers costing significantly more. By going with a 3-way design and employing a new in-house developed concentric driver, I've achieved a sound that is more true to the music than similar priced products."

Because of its point source characteristics, a concentric design, combining a tweeter and midrange diaphragm into a unified source—delivers the most coherent and accurate reproduction across the treble and midrange frequency spectrums. Because of their high cost, concentric drivers are traditionally used in only the more expensive systems. All three Uni-Fi models—bookshelf, floorstanding and center-channel—can be the basis of an outstanding 2-channel system or used to build an awe-inspiring multi-channel surround-sound system. Add an ELAC subwoofer to rock your world of music and movies like you have never imagined.

Uni-Fi by Andrew Jones.



UB5 Bookshelf Loudspeaker
Beyond the Bookshelf

Space constraints should never compromise great sound, and the Uni-Fi UB5 is the perfect solution when space is at a premium, but demand for audiophile sound is not negotiable. Using the same outstanding driver and crossover components of its bigger brother, this compact, 3-way, bass reflex monitor delivers the sonic signature of the Uni-Fi UF5 in a smaller package.



UC5 Center-Channel Loudspeaker
Center of the Sonic Universe

The perfect complement to a Uni-Fi surround-sound system, the UC5 paints a seamless center stage and gives incredible power to music and film with a 3-way, bass reflex design that uses the same outstanding concentric driver that makes every model in the Uni-Fi series such a stand-out performer.



UF5 Floorstanding Loudspeaker
Tower of Power

Like a precision instrument, Uni-Fi's flagship UF5 floorstander offers advanced technology with its concentric midrange/high-frequency transducer and proprietary aluminum-cone woofers. These support a 3-way, bass reflex design that delivers a sound unequaled at their price point

	UB5 Specs	UC5 Specs	UF5 Specs
Speaker Type.....	3-way bass reflex	3-way bass reflex	3-way bass reflex
Frequency Response.....	46 to 25,000 Hz	48 to 25,000 Hz	42 to 25,000 Hz
Nominal Impedance.....	4 Ω	4 Ω	4 Ω
Sensitivity.....	85 dB @ 2.83v/1m	85 dB @ 2.83v/1m	85 dB @ 2.83v/1m
Crossover Frequency.....	270 / 2700 Hz	270 / 2700 Hz	270 / 2700 Hz
Maximum Power Input.....	140 Watts	140 Watts	140 Watts
Tweeter.....	1-inch soft dome	1-inch soft dome	1-inch soft dome
Mid-Range.....	4-inch aluminum	4-inch aluminum	4-inch aluminum
Woofers.....	5.25-inch aluminum	2 x 5.25-inch aluminum	3 x 5.25-inch aluminum
Cabinet.....	CARB2 rated MDF-braced	CARB2 rated MDF-braced	CARB2 rated MDF-braced
Cabinet Finish.....	Black brushed vinyl	Black brushed vinyl	Black brushed vinyl
Port.....	Dual flared	Dual flared	3 x Dual flared
Binding Posts.....	5-way custom metal	5-way custom metal	5-way custom metal
Dimensions (WxHxD).....	7.87" x 12.75" x 10.75"	18.75" x 7.87" x 10.75"	7.87" x 38" x 10.75"
Net Weight.....	16.5 lbs each	23.3 lbs each	39.6 lbs each

Uni-Fi Features

Custom-Designed Concentric Driver

The delicacy of a 1-inch soft-dome tweeter and the harmonic accuracy of a rigid aluminum 4-inch midrange cone come together in a symphony of sonic perfection. Positioning the tweeter concentrically within the midrange voice coil achieves a uniform directivity pattern, for flat frequency response and formidable power handling, along with enhanced imaging for both on- and off-axis listening positions.

5.25-inch Aluminum Woofers

With aluminum, resonances that affect the linearity of common paper cones can be placed beyond the driver's operating frequency range. An extended size magnet with vented pole piece increases power handling, for accurate reproduction of bass frequencies that are clean, clear and powerful.

Sophisticated Crossover

High quality, audio-grade components specified in the manufacture of each custom, three-way crossover ensure smooth transition between the drivers.

Robust Cabinets

Every Uni-Fi enclosure is engineered for the long run with thick MDF outer walls and a luxurious textured vinyl finish. Specially designed internal bracing adds stiffness and strength to the cabinet's outer walls, reducing cabinet vibration that causes unwanted coloration.

Magnetically Attached Grills

When the protective grill is removed, hidden magnets beneath the surface of the cabinet keeps the front panel free of attachment holes, for a clean appearance.

High Quality Base and Feet

An outrigger base design for the UF5 floorstander provides a larger, more stable footprint and allows optimum coupling of the speaker cabinet to the floor.



Uni-Fi by **Andrew Jones**.

The new look of ELAC's coherent, concentric sound.

Uni-Fi Slim are the latest additions to the Uni-Fi family of bookshelf, floorstanding and center-channel speakers. The Slim series brings a sophisticated European flair to Uni-Fi, with cabinets that are slimmer, taller and deeper than the originals. And each comes in a high-quality satin painted black or white finish to complement the most elegant décor.

Like the originals, each model in the Slim series is designed by Andrew Jones, and employs the same concentric driver responsible for the award-winning sound of Uni-Fi. Ideal time-domain characteristics result from combining a tweeter and midrange diaphragm within a single voice coil—delivering the most coherent and accurate reproduction across the treble and midrange frequency spectrums. Importantly, Uni-Fi Slim sounds exactly the same as Uni-Fi, employing an identical driver complement, crossover, internal cabinet structure and volume. Only the shape and cabinet are even more refined, featuring a smaller footprint and smooth, satin finish.

Uni-Fi by Andrew Jones.



BS U5 Loudspeaker
Beauty and the bookshelf.

Space constraints should never compromise great sound, and the Uni-Fi BS U5 Slim is the perfect solution when floor space is at a premium, but audiophile sound and refined good looks are not negotiable. Using the same outstanding driver and crossover components of its bigger brother, this compact, 3-way, bass-reflex monitor delivers the sonic signature of Uni-Fi in a smaller package.



CC U5 Center-Channel
Lead Stylish center of for surround-sound.

The perfect complement to a Uni-Fi Slim surround-sound system, the elegant CC U5 Slim paints a seamless center stage for music and film with a slim, 3-way, bass-reflex design that uses the same outstanding concentric driver that makes every model in the Uni-Fi Slim series such a stand-out performer.



FS U5 Floorstanding Loudspeaker
A taller tower of power.

The flagship floorstander of the Uni-Fi Slim series is a beautiful, precision instrument that offers advanced technology with its concentric midrange/high-frequency transducer and proprietary aluminum-cone drivers. These support a 3-way, bass-reflex design that delivers a sound and appearance unequalled at their price point.

	BS U5 Specs	CC U5 Specs	FS U5 Specs
Speaker Type.....	3-Way Bass Reflex	3 - Way Bass Reflex	3-Way Bass Reflex
Frequency Response.....	46Hz - 25000Hz	48Hz - 25000hz	42Hz - 25000Hz
Nominal Impedance.....	4 Ohms	4 Ohms	4 Ohms
Sensitivity.....	85db @ 2.83v/1m	85db @ 2.83v/1m	85db @ 2.83v/1m
Crossover Frequency.....	270 / 2700Hz	270 / 2700Hz	270 / 2700Hz
Max Power Input.....	140 Watts	140 Watts	140 Watts
Tweeter.....	1" Cloth Dome	1" Cloth Dome	1" Cloth Dome
Midrange.....	4" Aluminum	4" Aluminum	4" Aluminum
Woofers.....	5.25 Inch Aluminum	2 x 5.25 Inch Aluminum	3 x 5.25 Aluminum
Cabinet.....	CARB2 Rated MDF	CARB2 Rated MDF	CARB2 Rated MDF
Cabinet Finish.....	Painted Satin White or Black	Painted Satin White or Black	Painted Satin White or Black
Port.....	Dual Flared	2 x Dual Flared	3 x Dual Flared
Binding Posts.....	5-Way Metal	5-Way Metal	5-Way Metal
Dimensions (WxHxD).....	7"x13.35"x11.54"/178x339x293mm	19.61"x7.01"x11.54"/498x178x293mm	7"x38.58"x11.54"/178x980x293mm
Net Weight.....	35.75 lbs / 16.25 kg	24.7 lbs / 11.2 kg	37.07 lbs / 16.85 kg

Uni-Fi Slim Features

Custom-designed concentric driver

The delicacy of a 1-inch soft-dome tweeter and the harmonic accuracy of a rigid aluminum 4-inch midrange cone come together in a symphony of sonic perfection. Positioning the tweeter concentrically within the midrange voice coil achieves a uniform directivity pattern, for flat frequency response and formidable power handling, along with enhanced imaging for both on- and off-axis listening positions.

Beautiful, furniture-quality finish

The other difference that distinguishes Uni-Fi Slim is the elegant matte-satin paint finish of the outer cabinets. Instead of being wrapped in black brushed vinyl, Slim upgrades the appearance and feel with a durable surface as elegant as it is durable.

Robust cabinets

The Uni-Fi Slim enclosures are narrower, taller and deeper than the original Uni-Fi series, engineered for the long run with thick MDF outer walls. Yet each has been carefully engineered to maintain the same internal volume, resulting in sonic characteristics indistinguishable from the originals. The cabinets incorporate specially designed internal bracing to add stiffness and strength to the cabinet's outer walls. This bracing greatly reduces cabinet vibration, which causes unwanted

coloration to the sound. ELAC believes that the only parts of a speaker that should be moving are the speaker drivers themselves.

Sophisticated crossover

One secret to the great sound of the Uni-Fi Slim series are the high quality, audio-grade components specified in the manufacture of each custom, three-way crossover, the careful design of which is essential to smooth transition between the drivers. The best crossovers are the ones in which the sonic landscape—from lowest fundamentals to highest highs—becomes seamless. This is the sound of Uni-Fi.

Sophisticated aluminum woofer

Through the use of aluminum, resonances that affect the linearity of common paper cones can be placed beyond the driver's operating frequency range. An extended size magnet with vented pole piece increases power handling, for accurate reproduction of bass frequencies that are clean, clear and powerful.

Custom-designed binding posts

The custom terminals provide flexibility of speaker wire connections and ensure optimal electron transfer from speaker cables to the speaker itself. Details like this make the difference!

ELAC

The life of sound.

The innovative new Debut B5. *The Absolute Sound* Product of the Year.
And *this* year has only just begun.



Expect innovation.



FROM THE FLUTTERING OF WINGS TO THE EXPLOSIVE POWER OF A SYMPHONY, REPRODUCING OUR UNIVERSE OF SOUND HAS BEEN THE PASSION OF ELAC FOR ALMOST A CENTURY. LOOK TO ELAC FOR REVOLUTIONARY LOUDSPEAKERS AND ELECTRONICS DRIVEN BY INNOVATION. IT'S WHAT WE DO AT ELAC—PUSHING THE LIMITS OF DESIGN, ENGINEERING AND VALUE TO BRING LIFE TO SOUND.

ELAC.com



Consistency in sound.

The simple, yet striking, cabinet contours are emphasized by shorter radii, while the uniform color of the driver surrounds provides restrained visual elegance. The new magnetically-attached grills, when removed, offer a view of the high-gloss paintwork, undisturbed by any mechanical hardware. The trim ring of the JET 5 tweeter, without visible screws, is another improvement in the array of modifications. However, the highly regarded and award-winning sound of every loudspeaker in the Line 240.3 remains unchanged.



BS 243.3
Bookshelf Loudspeaker
 Small but mighty.

Don't be fooled by its size, as the 2-way, bass-reflex BS 243.3 is an incredibly accomplished performer. Whether free-standing on dedicated supports or on a shelf close to a wall, the BS 243.3 is a superb all-rounder.



BS 244.3
Bookshelf Loudspeaker
 Compact with a big sound.

These larger compact 2-way, bass-reflex models are the perfect choice when it comes to delivering magnificent sound in small spaces. Dynamics, bass extension, and precision—the BS 244.3 delivers it all in astounding quality, thanks to its powerful 180 mm woofer.

	BS 243.3 Specs	BS 244.3 Specs
Speaker Type.....	2-way, bass reflex	2-way, bass reflex
Frequency Response.....	41 to 50,000 Hz	38 to 50,000 Hz
Nominal Impedance.....	4 Ω; minimum 3.6 Ω @ 240 Hz	4 Ω; minimum 3.3 Ω @ 190 Hz
Sensitivity.....	87.5 dB at 2.83 v/1m	88 dB at 2.83 v/1m
Crossover Frequency.....	2,500 Hz	2,500 Hz
Tweeter.....	1 x JET 5	1 x JET 5
Midrange.....	n/a	n/a
Woofer.....	1 x 150 mm AS -XR cone	1 x 180 mm AS -XR cone
Recommended Amplifier Power....	30 to 150 wpc	30 to 200 wpc
Nominal/Peak Power Handling.....	60 / 80 wpc	80 / 120 wpc
Cabinet Finish.....	High gloss black or white	High gloss black or white
Binding Posts.....	5-way metal	5-way metal
Accessories Included.....	Magnetic fabric grill; rubber feet	Magnetic fabric grill; rubber feet
Dimensions (WxHxD) In./mm.....	6.7"x11.2"x9.1" / 170x285x232mm	7.9"x13.0"x11.1" / 200x330x282mm
Net Weight (Each).....	11.5 lb	16.3 lb

Line 240.3 Features

Crystal membrane driver - Based on ELAC's Aluminum-Sandwich AS Technology. Resembling the surface of a large crystal, the aluminum-foil stamping stiffens the aluminum dome, diminishing resonances and minimizing coloration, while improving power handling and dynamics. The voice coil design of the drivers results in an expanded frequency range, and driver surround allows for longer cone excursions for truly prodigious volume and lowest distortion, a unique engineering achievement for a driver of its size.

JET 5 tweeter - Delivering true high-definition sound, enralls with its lightning-fast response and wide dynamic range, offering minimal distortion, lots of headroom and a distinctly wider frequency range than conventional dome tweeters. The ELAC JET tweeter is one of the most legendary tweeters in the industry and has won international praise with its transparent and effortless sound image.



CC 241.3
Center Channel Speaker
 Surround-sound marvel.

The center loudspeaker is the focal point of every surround-sound system, and is critical for film voices and action. The powerful drive units of the 2½-way, bass-reflex design—also used in the FS 247.3—deliver accurate tonal balance and detail from any listening position. The CC 241.3 will blend seamlessly with any loudspeaker from the Line 240.3.



FS 247.3 and FS 249.3
Floorstanding Speakers
 Meticulously evolved.

The FS 247.3 a 2½-way, bass-reflex speaker is conspicuous in a very particular way. While it appears discreet and slender, its acoustic performance is anything but.

The FS 249.3 is technically sophisticated yet eminently straightforward in that its 3-way bass-reflex design employs a specialized driver for each frequency band.

CC 241.3 Specs

2½-way, bass reflex
 34 to 50,000 Hz
 4 Ω; minimum 3.2 Ω @ 190 Hz
 89.5 dB at 2.83 v/1m
 500 / 2,400 Hz
 1 x JET 5
 n/a
 2 x 150 mm AS -XR cone
 30 to 200 wpc
 110 / 140 wpc
 High gloss black or white
 5-way metal
 Magnetic fabric grill; rubber feet
 16.9"x6.7"x13.8" / 430x170x350mm
 20.7 lb

FS 247.3 Specs

2½-way, bass reflex
 30 to 50,000 Hz
 4 Ω; minimum 3.4 Ω @ 210 Hz
 89 dB at 2.83 v/1m
 500 / 2,500 Hz
 1 x JET 5
 n/a
 2 x 150 mm AS -XR cone
 30 to 250 wpc
 120 / 160 wpc
 High gloss black or white
 5-way metal
 Magnetic fabric grill; M8 spiked/rubber feet
 8.7"x40.2"x12.6" / 220x1,021x320mm
 37.0 lb

FS 249.3 Specs

3-way, bass reflex
 28 to 50,000 Hz
 4 Ω; minimum 3 Ω @ 120 Hz
 90 dB at 2.83 v/1m
 500 / 2,800 Hz
 1 x JET 5
 1 x 140 mm AS -XR cone
 2 x 180 mm AS -XR cone
 30 to 400 wpc
 200 / 250 wpc
 High gloss black or white
 5-way metal
 Magnetic fabric grill; M8 spiked/rubber feet
 10.2"x45.2"x14.5" / 260x1,147x368mm
 68.3 lb

Line 240.3 Features

Bass reflex ports - ELAC's bass ports are a proprietary design feature. Flared on both sides, the double-flare port has been designed to minimize ventilation noises and to reduce friction losses of traditional ported cabinets.

Down-firing port - For a more flexible speaker placement and to minimize ventilation noise, the bass reflex port on the FS 249.3 and FS 247.3 is directed to the floor, exiting the bottom of the speaker cabinet in a down-firing configuration.

Grill magnets - Line 240.3 speakers are equipped with a grill that is attached only through the force of magnets hidden beneath the surface of the cabinet.

Bass control - When loudspeakers are used close to walls or in small rooms and the bass is too prominent, the ELAC Bass Control plug can be used to improve the bass reproduction by reducing the low frequency output.



Beautiful sound, perfected.

Technical mastery combines with visual restraint, and these speakers pack a powerful punch, featuring the latest-generation JET5 tweeter, aluminum sandwich woofer and advanced crossovers for uncompromising performance. The shape is not just beautiful, but minimizes resonances and other reflection anomalies often encountered in conventional cabinets.



BS 263 Bookshelf Loudspeaker
No small achievement.

Do not be deceived by the compact dimensions of the BS 263. Focus instead on its exceptionally grown-up sound! The fact that the cabinet of this 2-way, bass-reflex design is enlarged progressively towards the front baffle ensures that even low bass frequencies are effortlessly reproduced.



CC 261 Center-Channel Loudspeaker
The focal point.

The design and sound signature of the CC 261 serve a single purpose: to make the center channel a key player in a surround-sound setup. As a 2½-way, bass-reflex design, its complement of high-performance drive units, equivalent to that of the FS 267, creates an exhilarating sense of space and immediacy to soundtracks and music.



FS 267 Floorstanding Loudspeaker
Ticket to musical adventure.

As the slender sibling of the compact BS 263, the FS 267 is a 2½-way, bass-reflex design with a convex curved cabinet that fits discreetly—almost organically—into listening rooms of any size. Close your eyes and be captivated by delightfully neutral sound and effortless performance. From the deepest lows to silky highs—and everything in between—the FS 267 never misses a beat.

	BS 263 Specs	CC 261 Specs	FS 267 Specs
Speaker type.....	2-way, bass reflex	2½-way, bass reflex	2½-way, bass reflex
Frequency response.....	41 to 50,000 Hz	34 to 50,000 Hz	30 to 50,000 Hz
Nominal impedance.....	4 Ω; minimum 3.7 Ω @ 230 Hz	4 Ω; minimum 3.4 Ω @ 185 Hz	4 Ω; minimum 3.4 Ω @ 190 Hz
Sensitivity.....	87 dB at 2.83 v/1m	89 dB at 2.83 v/1m	85.5 dB at 2.83 v/1m
Crossover frequency.....	2,500 Hz	500 / 2,500 Hz	500 / 2,500 Hz
Recommended amplifier power....	30 to 150 wpc	30 to 200 wpc	30 to 250 wpc
Nominal/peak power handling.....	60 / 80 wpc	110 / 140 wpc	120 / 160 wpc
Tweeter.....	1 x JET 5	1 x JET 5	1 x JET 5
Woofer.....	1 x 150 mm AS -XR cone	2 x 150 mm AS -XR cone	2 x 150 mm AS -XR cone
Cabinet finish.....	High gloss black or white	High gloss black or white	High gloss black or white
Binding posts.....	5-way metal	5-way metal	5-way metal
Accessories included.....	Magnetic fabric grill; rubber feet; polishing cloth (black finish only)	70 mm vario bass control; magnetic fabric grill; rubber feet; polishing cloth (black finish only)"	Magnetic fabric grill; M8 spiked/rubber feet; polishing cloth (black finish only)"
Dimensions (WxHxD) in./mm.....	7.7"x11.2"x11.2" / 195x285x285mm	24.6"x6.7"x11.2" / 624x170x285mm	9.4"x40.2"x12.6" / 240x1,021x320mm
Net weight (each).....	14.6 lb / 6.6 kg	31.5 lb / 14.3 kg	43.7 lb / 19.8 kg

Line 260 Features

Crystal membrane driver

Based on ELAC's Aluminum-Sandwich AS Technology. Resembling the surface of a large crystal, the aluminum-foil stamping stiffens the aluminum dome, diminishing resonances and minimizing coloration, while improving power handling and dynamics. The voice coil design of the drivers results in an expanded frequency range, and driver surround allows for longer cone excursions for truly prodigious volume and lowest distortion, a unique engineering achievement for a driver of its size.

JET 5 tweeter

Delivering true high-definition sound, ELAC's JET 5 tweeter entralls with its lightning-fast response and wide dynamic range, offering minimal distortion, lots of headroom and a distinctly wider frequency range than conventional dome tweeters. The ELAC JET tweeter is one of the most legendary tweeters in the industry and has won international praise with its transparent and effortless sound image.

Down-firing port

For a more flexible speaker placement and to minimize ventilation noise, the bass reflex port of the FS 267 is directed to the floor, exiting the bottom of the speaker cabinet in a down-firing configuration.

Grill magnets

All Line 260 speakers are equipped with a fabric grill that is attached only through the force of magnets hidden beneath the surface of the cabinet. Listeners who prefer to look at their speakers and listen without a grill will appreciate the clean design and uninterrupted surfaces of the impeccable ELAC cabinetry.

Speaker feet

The speaker feet in M8 thread size come with a choice of spike or rubber inserts to provide the required stability for the FS 267, whether on hard flooring or carpet.



The sonic miracles.

Be amazed by the volume these compact loudspeakers can produce. Both models in the Line 300 deliver an extraordinary audio experience for their size, thanks in part to aluminum cabinets that are rigid, lightweight and allow for a narrow profile that minimizes the diffraction effects of larger cabinets.



BS 302 Bookshelf Loudspeaker
The perfect complement to the silver screen.

Offering unmistakable style and sound, the 2-way BS 302 replaces the BS 301.2 with a few new tricks up its sleeve. While a revised magnet system and modified crossover benefit the sound, the rear of the cabinet can accommodate an optional and practical wall bracket. Thanks to its diminutive size, the BS 302 can easily be integrated into any living space—delivering expansive sound and unique tonal reproduction.



BS 312 Bookshelf Loudspeaker
The ultimate ELAC classic.

No one could have predicted its subsequent success back in 1993, when a small loudspeaker called the ELAC Elegant 305 hinted at the promise of great things to come. Aesthetics and sound in perfect unity—the secret is aluminum. It guarantees high rigidity from low material thicknesses and makes a unique cabinet shape possible. The near-complete absence of a front baffle allows the sound to radiate with total freedom. The audible result is room-filling, unfettered and utterly captivating sound.

	BS 302 Specs	BS 312 Specs
Speaker type.....	2-way, closed box, high-pass integrated	2-way, bass reflex
Tweeter.....	1 x 20 mm cloth dome	1 x JET 5
Woofer.....	1 x 78 x 108 mm AS oval cone	1 x 115 mm AS -XR cone
Crossover frequency.....	80/2,390 Hz	3,200 Hz
Frequency response.....	80 to 35,000 Hz	42 to 50,000 Hz
Sensitivity.....	86 dB at 2.83 v/1m	87 dB at 2.83 v/1m
Recommended amplifier power.....	20 to 120 wpc	50 to 150 wpc
Nominal/peak power handling.....	60 / 75 wpc	70 / 100 wpc
Nominal impedance.....	4 Ω; minimum 3.5 Ω @ 1,200 Hz	4 Ω; minimum 3.4 Ω @ 280 Hz
Binding posts.....	5-way metal	5-way metal
Magnetic shielding.....	Yes	No
Cabinet finishes.....	High gloss black, gray or white	High gloss black or white
Accessories included.....	Metal grill	Metal grill
Dimensions (WxHxD) in./mm.....	3.6"x4.8"x4.4" / 91x121x111mm	4.8"x8.2"x11.1" / 123x208x282mm
Net weight (each).....	2.9 lb / 1.3 kg	15.9 lb / 7.2 kg

Line 300 Features

Crystal membrane driver

Based on ELAC's Aluminum-Sandwich AS Technology. Resembling the surface of a large crystal, the aluminum-foil stamping stiffens the aluminum dome, diminishing resonances and minimizing coloration, while improving power handling and dynamics. The voice coil design of the drivers results in an expanded frequency range, and driver surround allows for longer cone excursions for truly prodigious volume and lowest distortion, a unique engineering achievement for a driver of its size.

JET 5 tweeter

Delivering true high-definition sound, ELAC's JET 5 tweeter enralls with its lightning-fast response and wide dynamic range, offering minimal distortion, lots of headroom and a distinctly wider frequency range than conventional dome tweeters. The ELAC JET tweeter is one of the most legendary tweeters in the industry and has won international praise with its transparent and effortless sound image.

Bass reflex port

The bass port of the BS 312 is a proprietary design feature. Flared on both

sides, the double-flare port has been designed to minimize ventilation noises and to reduce friction losses of traditional ported cabinets.

Bass control

The sound of loudspeakers is heavily influenced by room-acoustics. In some cases the room shape and especially the furnishings offer less than ideal conditions for the optimum set-up of the loudspeakers, sometimes resulting in bass reproduction that is too strong. Closing the bass reflex port of the BS 312 compensates for unfavorable acoustic conditions when speakers are installed, for example, close to a wall. The ELAC Bass Control plug can be used to improve the bass reproduction by reducing the low frequency output.

Magnetic shielding

With the cinema-friendly BS 302, you can watch television without having distorted color. Thanks to magnetic shielding, this loudspeaker can be installed right next to CRT screens or devices with hard drives sensitive to magnets without creating interference.



Born performers.

The 400 line is a striking illustration of how design and function can be seamlessly combined. Decorative aluminum elements transform the technical components of the loudspeakers into visual highlights and the crossbar support system fitted to the floor-standing models provides an elegant—and extremely stable—foundation.

The most striking acoustic innovation is the JET 5 tweeter. Outwardly recognizable by its modified appearance, it converts electrical signals with even greater precision—virtually free of inertia. By combining it with a new simplified crossover, ELAC engineers have managed to further improve the high-frequency resolution of its predecessor.

The use of newly developed loudspeaker chassis enables performance in the low and mid-frequency range to match that of the JET 5 tweeter. Ensuring excellent signal fidelity at all volume settings and an even deeper bass response were at the very top of our list of priorities. The Line 400 speakers leave no doubt that a new sonic benchmark has been set for loudspeakers in their class.



BS 403
Bookshelf Loudspeaker
 Plays like a big one.

Although it marks the entry point into the Line 400, the compact dimensions of the BS 403 belie its exceptional performance capabilities. In small to medium-sized rooms, this 2-way, bass-reflex design delivers extraordinary sound that will leave even the most critical listeners enthralled.



CC 400
Center-Channel
 Highest quality
 surround-sound.

A 2½-way, bass-reflex design that proves convincingly that a center-channel speaker is more than just one voice among many. It's not just the unifying element, but the lead performer in surround-sound systems where an elegant appearance is as important as impressive sound—front and center.



FS 407
Floorstanding
Loudspeaker

Understated design, uncompromising sound.
 An elegantly proportioned, floor-standing loudspeaker of 2½-way, bass reflex design with an appearance as beautiful as its sound, able to effortlessly recreate the realism of a concert hall, even in large rooms.



FS 409
Floorstanding
Loudspeaker

Traditional elegance with modern style.
 A 3½-way, bass reflex design that offers traditional ELAC performance in a timeless yet contemporary package. The key element to its performance is the Crystal Membrane midrange drive unit of the FS 409.

	BS 403 Specs	CC 400 Specs	FS 407 Specs	FS 409 Specs
Speaker type.....	2-way, bass reflex	2½-way, bass reflex	2½-way, bass reflex	3½-way, bass reflex
Tweeter.....	1 x JET 5	1 x JET 5	1 x JET 5	1 x JET 5
Midrange.....	n/a	(150 mm)	(150 mm)	1 x 150 mm AS -XR cone
Woofer.....	1 x 150 mm AS -XR cone	2 x 150 mm AS -XR cone	2 x 150 mm AS -XR cone	2 x 180 mm AS -XR cone
Crossover frequency.....	2,500 Hz	450 / 2,400 Hz	450 / 2,500 Hz	140 / 360 / 2,700 Hz
Frequency response.....	41 to 50,000 Hz	32 to 50,000 Hz	30 to 50,000 Hz	28 to 50,000 Hz
Sensitivity.....	86 dB at 2.83 v/1m	88.5 dB at 2.83 v/1m	88 dB at 2.83 v/1m	89 dB at 2.83 v/1m
Recommended amplifier power....	40 to 200 wpc	40 to 250 wpc	40 to 300 wpc	40 to 450 wpc
Nominal/peak power handling.....	70 / 100 wpc	120 / 160 wpc	130 / 170 wpc	200 / 280 wpc
Nominal impedance.....	4 Ω; minimum 3.2 Ω @ 260 Hz	4 Ω; minimum 3.6 Ω @ 180 Hz	4 Ω; minimum 3.5 Ω @ 200 Hz	4 Ω; minimum 3.4 Ω @ 105 Hz
Binding posts.....	5-way metal	5-way metal	5-way metal	5-way metal
Magnetic shielding.....	No	No	No	No
Cabinet finishes.....	High gloss black, white or walnut veneer; oiled walnut	High gloss black, white or walnut veneer; oiled walnut	High gloss black, white or walnut veneer; oiled walnut	High gloss black, white or walnut veneer
Accessories included.....	Magnetic fabric grill	Magnetic fabric grill	Magnetic fabric grill; M8 spiked/rubber feet	Magnetic fabric grill; bi-wiring set
Dimensions (WxHxD) in./mm.....	6.5"x12.1"x10.9"/166/308/277mm	25.6"x8.0"x12.4"/650x204x314mm	10.2"x40.1"x12.4"/260x1,038x314mm	11.4"x46.5"x15.0"/290x1,180x380mm
Net weight (each).....	16.1 lb / 7.3 kg	30.1 lb / 14.0 kg	45.0 lb / 20.4 kg	71.5 lb / 32.5 kg

Line 400 Features

Crystal membrane driver - Based on ELAC's Aluminum-Sandwich AS Technology. Resembling the surface of a large crystal, the aluminum-foil stamping stiffens the aluminum dome, diminishing resonances and minimizing coloration, while improving power handling and dynamics. The voice coil design of the drivers results in an expanded frequency range, and driver surround allows for longer cone excursions for truly prodigious volume and lowest distortion

JET 5 tweeter - Delivering true high-definition sound, ELAC's JET 5 tweeter enralls with its lightning-fast response and wide dynamic range, offering minimal distortion, lots of headroom and a distinctly wider frequency range than conventional dome tweeters. The ELAC JET tweeter is one of the most legendary tweeters in the industry and has won international praise with its transparent and effortless sound image.

Grill magnets - All Line 400 speakers are equipped with a fabric grill over a wooden frame that is attached only through the force of magnets hidden beneath the surface of the cabinet. Listeners who prefer to look at their

speakers and listen without a grill will appreciate the clean design and uninterrupted surfaces of the impeccable ELAC cabinetry.

Speaker feet - The speaker feet in M8 thread size come with a choice of spike or rubber inserts to provide the required stability, whether on hard flooring or carpet. Both FS 409 and FS 407 floorstanders are offered with a plinth on adjustable ELAC spikes and rubber feet.

Down-firing port - For a more flexible speaker placement and to minimize ventilation noise, the bass reflex port is directed to the floor, exiting the bottom of the speaker cabinet in a down-firing configuration.

Aluminum baskets - To minimize mechanical vibrations and ensure maximum rigidity, the baskets for cone drivers used in the Line 400 speakers are made of cast aluminum instead of pressed or stamped steel.



Giants of sound.

Perhaps the greatest innovation of the Line 500 is the **ELAC VX-JET transducer**. The acclaimed drive unit, which combines the renowned JET tweeter with a ring-radiator midrange driver in a concentric arrangement, provides the foundation of these speakers' remarkable sound. What sets it apart is the variable X-JET suspension, hence the designation VX-JET.

The thinking behind this drive unit draws from the fact that every room presents different acoustic characteristics and that the same loudspeaker will produce different results from one room to another. A mechanism on the rear of the loudspeaker allows for stepless adjustment of the entire drive unit by up to 8 mm in front of and behind the front baffle.

By changing the position of the VX-JET, it is possible to fine tune the sound dispersion characteristics in the middle to high-frequency range. This not only alters the tonal balance, but also the relationship between direct and diffuse sound arriving at the listening position. As a result, the VX-JET makes it possible for the first time to create a uniform and precisely etched three-dimensional sound stage in different rooms and at varying listening distances.

Each model in the Line 500 combines the innovative VX-JET with other refinements to make a loudspeaker of true distinction. Critical to the high performance of the Line 500 are Crystal Membrane midrange and bass drivers based on Aluminum-Sandwich technology that deliver maximum stiffness and unrivaled performance within their frequency ranges. Inside are the finest crossover components and outside, beautifully finished cabinets—wherever you look, you'll discover the ELAC passion for perfect detail.



FS 507 VX-JET Floorstanding Speaker
Audiophile reference in a smaller package.

The FS 507 VX-JET combines the innovation and elegance of the larger FS 509 VX-JET in a more compact, 3½-way, bass-reflex design. It makes music come alive like almost no other loudspeaker, and no matter where you position the FS 507 VX-JET, it performs at its best thanks to the VX-JET driver.



CC 501 VX-JET Center-Channel
The center-channel reference.

For those seeking a surround-sound system without compromise, the CC 501 VX-JET 3-way, bass-reflex speaker is the center-channel of choice and the perfect complement to the FS 509 or FS 507. With it, one can create a surround-sound environment of unrivaled spatial realism, clarifying the lines between what's real and what's imagined.



FS 509 VX-JET Floorstanding Speaker
ELAC's reference speaker knows no limits.

The FS 509 VX-JET reproduces even the most challenging musical material with unprecedented authority. This 4-way, bass-reflex design incorporates the VX-JET tweeter with its innovative dial, so sound can be adjusted to the listener's preference.

	FS 507 VX-JET Specs	CC 501 VX-JET Specs	FS 509 VX-JET Specs
Speaker type.....	3½-way, bass reflex	3-way, bass reflex	4-way, bass reflex
Tweeter.....	1 x JET 5	1 x JET 5	1 x JET 5
Midrange.....	1 x 50 / 105 mm AS-XR ring radiator	1 x 50 / 105 mm AS-XR ring radiator	1 x 180 mm AS-XR cone, LLD 1 x 50/105 mm AS-XR ring radiator
Woofer.....	2 x 180 mm AS -XR cone	2 x 180 mm AS -XR cone	2 x 220 mm AS-XR cone
Crossover frequency.....	180 / 550 / 2,700 Hz	550 / 2,700 Hz	120 / 600 / 2,800 Hz
Frequency response.....	26 to 50,000 Hz	29 to 50,000 Hz	24 to 50,000 Hz
Sensitivity.....	88.5 dB at 2.83 v/1m	89 dB at 2.83 v/1m	89 dB at 2.83 v/1m
Recommended amplifier power.....	60 to 500 wpc	60 to 500 wpc	80 to 600 wpc
Nominal/peak power handling.....	220 / 300 wpc	220 / 300 wpc	280 / 350 wpc
Nominal impedance.....	4 Ω; minimum 3.5 Ω @ 95 Hz	4 Ω; minimum 3.5 Ω @ 105 Hz	4 Ω; minimum 3.1 Ω @ 75 Hz
Binding posts.....	5-way metal	5-way metal	5-way metal
Magnetic shielding.....	No	Yes	No
Cabinet finishes.....	High gloss black, tobacco or walnut veneer	High gloss black, tobacco or walnut veneer	High gloss black, white or walnut veneer; oiled walnut
Accessories included.....	Magnetic metal grill; bi-wiring set	Magnetic metal grill	Magnetic metal grill; bi-wiring set
Dimensions (WxHxD) in./mm.....	11.0"x47.2"x16.3" / 280x1,198x413mm	37.0"x11.5"x16.3" / 940x293x413mm	12.6"x54.1"x18.3" / 320x1,373x466mm
Net weight (each).....	81.6 lb / 37.0 kg	80.5 lb / 36.5 kg	126.1 lb / 57.2 kg

Line 500 Features

Crystal membrane driver

Based on ELAC's Aluminum-Sandwich AS Technology. Resembling the surface of a large crystal, the aluminum-foil stamping stiffens the aluminum dome, diminishing resonances and minimizing coloration, while improving power handling and dynamics. The voice coil design of the drivers results in an expanded frequency range, and driver surround allows for longer cone excursions for truly prodigious volume and lowest distortion, a unique engineering achievement for a driver of its size.

JET 5 tweeter

Delivering true high-definition sound, ELAC's JET 5 tweeter enralls with its lightning-fast response and wide dynamic range, offering minimal distortion, lots of headroom and a distinctly wider frequency range than conventional dome tweeters. The ELAC JET tweeter is one of the most legendary tweeters in the industry and has won international praise with its transparent and effortless sound image.

Grill magnets

All Line 500 speakers are equipped with a metal grill that is attached only through the force of magnets hidden beneath the surface of the cabinet.

Listeners who prefer to look at their speakers and listen without a grill will appreciate the clean design and uninterrupted surfaces of the impeccable ELAC cabinetry.

Bi-wiring

Listeners seeking ultimate treble and bass frequency detail will appreciate two pairs of terminals that offer a convenient solution for bi-wiring or bi-amping the FS 509 VX-JET and FS 507 VX-JET speaker systems. These high-quality, gold-plated terminals offer easy and are suitable for larger cable cross sections as well as for high-quality spade lugs.

HD spike

The high definition spikes on the bottom of each Line 500 speaker are machined from solid brass with a bright chrome finish. These massive spikes use a M10 thread, and ensure secure positioning and solid, stable footing while providing necessary clearance to the floor.

Aluminum baskets

To minimize mechanical vibrations and ensure maximum rigidity, the baskets for cone drivers used in the Line 500 speakers are made of cast aluminum instead of pressed or stamped steel.



All-around perfect sound.

Sometimes you want to elevate your listening experience beyond the expected, with an unfettered realism that accurately recreates a limitless landscape of sound. ELAC's revolutionary 4Pi Plus.2 tweeter is a landmark development in high-frequency reproduction. Combining a pair with the finest loudspeakers—like the Line 500—results in a world-class audio system.

When it comes to surround-sound cinema, nothing compares to the 3-D realism of Dolby Atmos®. The ELAC TS 3030 Dolby Atmos® add-on speaker modules turn your existing loudspeaker system into a home-theater standout.



TS 3030
Enter another dimension.

The realism of the Dolby Atmos® three-dimensional sound experience has got to be heard to be believed. With Dolby Atmos®-enabled AV receivers and processors, simply add the TS3030 to the top of your bookshelf or floorstanding speakers to achieve dimensionality that puts you in the middle of the music and the action.



4 PI Tweeter
Unfettered spatial realism.

Placing the omnidirectional 4Pi Plus.2 ribbon super-tweeter on top of your main, direct-radiating loudspeakers results in perfect spaciousness not found with any conventional loudspeaker. Equipped with flexible options for adjusting sensitivity and the lower cutoff frequency, the 4Pi Plus.2 can be seamlessly integrated with virtually any loudspeaker. It enables the sound to break free from the loudspeakers and fill the entire room. All without the need for additional amplification.

	TS 3030 Specs	4 PI Tweeter Specs
Speaker type.....	2-way, add-on Dolby Atmos® module	Add-on high-frequency driver
Tweeter.....	1 x 20 mm dome	1 x 4Pi Plus.2
Woofers.....	1 x 115 x 85 mm AS cone	n/a
Recommended amplifier power.....	n/a	20 to 400 wpc
Crossover frequency.....	2,400 Hz	10,000 / 12,000 / 15,000 Hz adjustable
Frequency response.....	85 to 35,000 Hz	10,000 to 50,000 Hz
Sensitivity.....	86 dB at 2.83 v/1m	84 to 92 dB at 2.83 v/1m
Nominal/peak power handling.....	60 / 75 wpc	400 / 600 wpc
Nominal impedance.....	4 Ω; minimum 3.5 Ω @ 320 Hz	6 Ω; minimum 3.5 Ω @ 10,000 Hz
Binding posts.....	5-way metal	5-way metal
Magnetic shielding.....	No	No
Cabinet finish.....	High gloss black	High gloss black
Dimensions (WxHxD) in./mm.....	6.3"x4.5"x9.6" / 160x115x245mm	5.9"x5.6"x9.8" / 150x143x250mm
Net weight (each).....	4.6 lb / 2.2 kg	8.8 lb / 4.0 kg

Features

4Pi technology

Immerse yourself in music—the ELAC 4Pi ribbon tweeter reproduces high frequencies in 360-degree surround sound, adding an incredible illusion of spaciousness to every piece of music. The 360-degree omnidirectional ribbon tweeter yields a resonance-free upper cut-off frequency of 53 kHz and makes this tweeter an ideal component for the reproduction of SACD and DVD-A source material. Its impressive and silky sound quality lends realistic air to voices and complex recordings.

The design principle incorporates an 0.006 mm aluminum ribbon to form the membrane, ultra-light in weight with an extremely high sensitivity. When a current passes this membrane, it expands and contracts like a breathing cylinder. Driven by a strong neodymium magnet system, the flexible ribbon yields exceptional response that is flat well beyond the limits of human hearing but essential to the accurate reproduction of ambience and hence, musical realism.



Bass that takes you down.

Nothing brings realism to recorded sound like deep, authoritative bass. Yet most affordable systems are compromised in this critical region. Here the rich, powerful bottom octaves are fundamental—literally—to the life of music and movie soundtracks when it comes to reproducing the full spectrum of instruments and sound effects.

ELAC subwoofers are easy to add to your existing speaker system, thanks to built-in power amplification—with EQ models—ELAC’s advanced control app that makes room integration a breeze. Because the low frequencies reproduced by a subwoofer are omnidirectional, it means that a subwoofer can be located most any place in your listening room and that, because of the omnidirectional dispersion pattern of the lowest notes, a single subwoofer is sufficient to reproduce the content of both stereo channels. Listeners who want even more bass output can use one subwoofer per channel for the absolute ultimate in low-frequency slam, impact and realism. Add an ELAC powered subwoofer to your sound system and discover what you’ve been missing.

Debut by Andrew Jones.



S10 Subwoofer
Compact powerhouse.

Add the Debut S10 powered subwoofer to your main speakers and hear bass you never knew existed. With 200 Watts* built-in, there's plenty of power to deliver rock-solid low frequencies that make your favorite music and soundtracks more realistic than ever, with the weight and presence of a live performance.*200 Watts Peak Power/ 100 Watts RMS Power.



S10EQ Subwoofer
Stunning bass.

Do you like bass? A 10-inch bass driver, powered by a 400-Watt* BASH amplifier and enhanced by a 10-inch passive radiator, creates awesome low frequencies and a stunning sense of realism. Meanwhile, advanced Bluetooth® control and Auto EQ let you operate the Debut S10EQ from your smartphone. *400 Watts Peak Power / 200 Watts RMS Power. **



S12EQ Subwoofer
Thunder strikes.

The Debut S12EQ delivers a colossal 1,000 Watts* of BASH amplifier power to a massive 12-inch driver, augmented by a 12-inch passive radiator for bass that truly shakes the foundation. Advanced Bluetooth® control and Auto EQ let you operate this no-compromise subwoofer from your smartphone.*1,000 Watts Peak Power / 500 Watts RMS Power. **

**A Bluetooth 4.0 low-energy Android or IOS device is required to set up and operate this subwoofer.

S10 Specs		S10 EQ Specs		S12 EQ Specs	
Speaker Type.....	Powered bass-reflex subwoofer	Powered subwoofer with passive radiator	Powered subwoofer with passive radiator	Powered subwoofer with passive radiator	Powered subwoofer with passive radiator
Woofer.....	10-inch high-excursion doped paper cone	10-inch high-excursion doped paper cone	10-inch high-excursion doped paper cone	12-inch high-excursion doped paper cone	12-inch high-excursion doped paper cone
Passive Radiator.....	n/a	10-inch high-excursion doped paper cone	10-inch high-excursion doped paper cone	12-inch high-excursion doped paper cone	12-inch high-excursion doped paper cone
Frequency Response.....	35 to 150 Hz	28 to 150 Hz	28 to 150 Hz	25 to 150 Hz	25 to 150 Hz
Crossover Frequency.....	50 to 150 Hz, continuously adjustable	50 to 150 Hz, continuously adjustable	50 to 150 Hz, continuously adjustable	50 to 150 Hz, continuously adjustable	50 to 150 Hz, continuously adjustable
Amplifier Type.....	BASH-Tracking	BASH-Tracking	BASH-Tracking	BASH-Tracking	BASH-Tracking
Maximum Amplifier Power.....	200 Watts peak / 100 Watts RMS	400 Watts peak / 200 Watts RMS	400 Watts peak / 200 Watts RMS	1,000 Watts peak / 500 Watts RMS	1,000 Watts peak / 500 Watts RMS
Standby Power Consumption.....	0.5 Watt	0.5 Watt	0.5 Watt	0.5 Watt	0.5 Watt
Inputs.....	LFE RCA	LFE RCA	LFE RCA	LFE RCA	LFE RCA
Cabinet.....	CARB2 rated MDF	CARB2 rated MDF	CARB2 rated MDF	CARB2 rated MDF	CARB2 rated MDF
Cabinet Finish.....	Black brushed vinyl	Black brushed vinyl	Black brushed vinyl	Black brushed vinyl	Black brushed vinyl
Accessories Included.....	AC power cable	AC power cable	AC power cable	AC power cable	AC power cable
Dimensions (WxHxD) In./mm.....	13.5"x13.5"x13.5" / 343x343x343mm	13.5"x13.5"x13.5" / 343x343x343mm	13.5"x13.5"x13.5" / 343x343x343mm	17.0"x17.0"x17.0" / 432x432x432mm	17.0"x17.0"x17.0" / 432x432x432mm
Net Weight.....	28.7 lb / 13.0 kg	31.1 lb / 14.1 kg	31.1 lb / 14.1 kg	54.9 lb / 24.9 kg	54.9 lb / 24.9 kg

Debut Subwoofer Features

Enter BASH® amplification - BASH (Bridged Amplifier Switching Hybrid) amplifiers represent a “best of both worlds” solution for subwoofer amplification, combining the sound quality of Class AB with the efficiency of Class D amplifiers. While a Class AB amp uses fixed supply voltage regardless of input signal, BASH uses a modulated switched mode power supply that tracks the input signal, supplying only the necessary voltage to the Class AB amp as needed.

Robust cabinets - Every ELAC Debut subwoofer is engineered for the long run with thick MDF outer walls and a luxurious textured vinyl finish. The cabinets of the S10EQ and S12EQ incorporate specially designed internal bracing to add stiffness and strength to the outer walls. This bracing greatly reduces cabinet vibration, which causes unwanted coloration to the sound. ELAC believes that the only parts of a speaker that should be moving are the speaker drivers themselves.

Custom bass drivers - Custom long-throw drivers provide bass that is fundamental to accurately reproducing today's demanding music and movie soundtracks. Both S10 and S10EQ subwoofers employ a 10-inch

driver, while the S12EQ employs a 12-inch unit. Both the S10EQ and S12EQ also employ a single 10-inch and 12-inch passive radiator, respectively, which improves the transient response and increases the efficiency of the system.

Advanced Bluetooth® control - Doing away with traditional analog controls, both the S10EQ and S12EQ subwoofers incorporate ELAC's advanced digital control system. Simply download the ELAC SubEQ app for your smartphone and you will have complete control. No more fumbling around the back of the subwoofer again.

Auto EQ - Utilizing the ELAC SubEQ app and your smartphone's microphone, both the S10EQ and S12EQ subwoofers will automatically equalize to your room's characteristics using a 12-band parametric equalizer. Manual EQ is available as well.

Auto power On/Off - Debut subwoofers will detect when audio is being sent to the unit and power the unit on. Also, to conserve energy, the subwoofer will power off after a long period of inactivity.



Brains and brawn.

How smart can a subwoofer be? Thanks to the ELAC SubEQ app and the Advanced Bluetooth® control interface, listeners can simply pair an iPhone®, iPad® or Android® device with the new ELAC SUB 2090, 2070 and 2050 subwoofers and adjust the sound to their preferences. Intuitive, comprehensive and downloadable, free of charge, this clever app means there are no complicated network connections, as the subwoofer and mobile device communicate directly via BLE (Bluetooth® Low Energy).

Doing away with traditional analog controls means no fiddly adjustments at the rear of the subwoofer. Four preset modes can be selected at the touch of a finger: Normal, Music, Cinema, and Night. Those who want to explore the possibilities of the app-control system further will discover genuine pro-audio options such as a parametric equalizer, a low-pass filter, and individual settings for power-saving auto-on function. The most exciting option is the calibration function, which uses the microphone on your smart-phone to listen to the volume, frequency response and sound reflections in the room before automatically optimizing the sound of your ELAC subwoofer.

The new ELAC subwoofers can be connected directly using loudspeaker cables (left, center, right) or stereo RCA cables. With the SUB 2090, symmetrical wiring can be also used. And if you prefer to dispense with wires altogether, the new high-performance subwoofers are equipped with an ELAC Wireless Interface for wireless music transmission.



SUB 2030 Subwoofer
Fundamental beginnings.

The SUB 2030 plays deep, clean and loud, thanks to a 250 mm woofer and ported enclosure. 350 Watts of BASH amplification deliver tight and authoritative bass.



SUB 2050 Subwoofer
Deep impact.

The SUB 2050 uses a single 300 mm woofer driven by a 500-Watt BASH amplifier. Delivering impressive reproduction of the lowest frequencies. 500 Watts Max Power. **



SUB 2070 Subwoofer
Dynamic contender.

The SUB 2070 is in principle identical to the SUB 2090, but utilizes smaller drivers and a smaller enclosure. The push-push/pull-pull principle is applied to two 250 mm woofers driven by a powerful BASH amplifier, able to deliver 600 Watts. 600 Watts Max Power. **



SUB 2090 Subwoofer
The foundation.

The SUB 2090 offers earth-shaking bass, speed, and clarity. The push-push/pull-pull principle is applied to two 300 mm woofers, oppositely positioned, which are additionally joined by a massive tension rod that eliminates mechanical vibration. 1,200 Watts Max Power. **



**Bluetooth 4.0 low-energy Android or IOS device is required to set up and operate this subwoofer.

	SUB 2030 Specs	SUB 2050 Specs	SUB 2070 Specs	SUB 2090 Specs
Speaker type.....	Powered, closed box	Powered, closed box	Powered, closed box	Powered, closed box
Woofer.....	10" cone	12" AS cone	Dual 10" AS cone	Dual 12" AS cone
Frequency response.....	20 to 180 Hz	19 to 180 Hz	18 to 180 Hz	17 to 180 Hz
Crossover frequency.....	44 to 160 Hz, selectable	40 to 150 Hz, continuously adjustable	40 to 150 Hz, continuously adjustable	40 to 150 Hz, continuously adjustable
Amplifier Type.....	BASH-Tracking	BASH-Tracking	BASH-Tracking	BASH-Tracking
Maximum amplifier power.....	350 Watts Max	500 Watts Max	600 Watts Max	1,200 Watts Max
Standby power consumption.....	1 Watt	1 Watt	1 Watt	1 Watt
Maximum power consumption.....	480 Watts (full load)	700 Watts (full load)	900 Watts (full load)	1,800 Watts (full load)
Inputs.....	2 x line-channel (RCA)	2 x line-channel (RCA); 1 x ELAC WL-interface; 3 x LS level	2 x line-channel (RCA); 1 x ELAC WL-interface; 3 x LS level	2 x line-channel (XLR); 2 x line-channel (RCA); 1 x ELAC WL-interface; 3 x LS level
Input sensitivity.....	2 x 70 mV (RCA)	2 x 70 mV (RCA)	2 x 70 mV (RCA)	2 x 140 mV (XLR); 2 x 70 mV (RCA)
Input impedance.....	10 kΩ (RCA)	20 kΩ (RCA)	20 kΩ (RCA)	20 kΩ (RCA)
Cabinet finish.....	Matte black or white	High gloss black or white	High gloss black or white	High gloss black or white
Accessories included.....	AC power cable	AC power cable	AC power cable	AC power cable
Dimensions (WxHxD) in./mm.....	11.8"x14.0"x12.4"/300x356x315mm	15.0"x17.3"x15.0"/380x440x380mm	14.2"x18.7"x15.2"/360x475x38mm	16.5"x21.0"x16.5"/420x533x420mm
Net weight.....	30.1 lb / 14.0 kg	48.5 lb / 22.0 kg	70.5 lb / 32.0 kg	88.2 lb / 40.0 kg

Line 2000 Features

Enter BASH® amplification

BASH (Bridged Amplifier Switching Hybrid) amplifiers represent a “best of both worlds” solution for subwoofer amplification, combining the sound quality of Class AB with the efficiency of Class D amplifiers. While a Class AB amp uses fixed supply voltage regardless of input signal, BASH uses a modulated switched mode power supply that tracks the input signal, supplying only the necessary voltage to the Class AB amp as needed. The latest BASH technology has gone through three core evolutions and is further refined in these latest ELAC Debut subwoofers.

Push-push/Pull-pull configuration

The SUB 2090 and SUB 2070 deliver perfect, clean and distortion-free reproduction of low frequencies, employing a push-push/pull-pull arrangement of the two woofers that eliminates vibrations and mechanical resonances. Positioned opposite to one another but electrically driven in parallel, the acoustical output of both drivers is added up, but the mechanical forces cancel one other. Hence, no mechanical distortion remains to compromise the purity of the bass spectrum.

Down-firing driver

Allowing for more flexible speaker placement and to minimize ventilation noise, the bass reflex port of the SUB 2050 and SUB 2030 is directed out the bottom of the enclosure in a down-firing orientation.

Advanced Bluetooth® control

SUB 2090, SUB 2070 and SUB 2050 subwoofers incorporate an advanced, digital control system. Analog rotary potentiometers and switches have been replaced by a digital signal processor (DSP), which allows users to adjust the subwoofer conveniently and accurately. All parameters, such as volume, cutoff frequency, phase etc., as well as the automatic calibration function, can be conveniently adjusted with the help of the ELAC app.

Auto power On/Off

Subwoofers will detect when audio is being sent to the unit and power the unit on. Also, to conserve energy, the subwoofer will power off after a long period of inactivity.



Sound from on-high.

That's the way that ELAC Custom Install line of speakers fit into your lifestyle. What separates these ELAC models from all the rest is their sound, performance and durability. These speakers receive the same attention to design as other ELAC speakers, and use the same high-quality drivers and components, with build quality and reliability that far surpasses other products in the so-called custom installation arena.



IC 1005
A well-rounded design

The IC 1005 marks the entry into the world of built-in loudspeakers. Its compact external and fitting dimensions make it ideal for installation in walls or ceilings. Not only is it perfect for virtually invisible stereo or multichannel installations, it also makes an excellent addition to conventional floorstanding or bookshelf loudspeakers. The IC 1005 is easy to install, extremely robust, and blessed with absolutely authentic sound.



IC 1010
Sounds bigger than it is.

This in-ceiling design performs to real hi-fi standards. Thanks to its round shaped mounting hole, this coaxial in-ceiling speaker can be mounted into ceilings and even walls. Because of its nominal impedance of 8 Ω, the IC 1010 is cascable and can easily be connected to all kinds of amplifiers. Connect it and you'll never need to touch it again.

	IC 1005 Specs	IC 1010 Specs
Speaker type.....	2-way, rear side open	2-way, rear side open
Tweeter.....	1 x 20 mm dome	1 x 25 mm dome
Woofer.....	1 x 130 mm cone	1 x 165 mm cone
Crossover frequency.....	2,200 Hz	3,000 Hz
Frequency response.....	40 to 25,000 Hz	35 to 25,000 Hz
Sensitivity.....	87 dB at 2.83 v/1m	88 dB at 2.83 v/1m
Recommended amplifier power.....	20 to 120 wpc	20 to 120 wpc
Nominal/peak power handling.....	50 / 70 wpc	50 / 70 wpc
Nominal impedance.....	6 Ω; min. 6.3 Ω @ 1900 Hz	8 Ω; min. 7.3 Ω @ 200 Hz; 5.3 Ω @ 16,000 Hz
Finish.....	Arctic white, paintable	Arctic white, paintable
Mounting Hole Diameter.....	7.09 in / 180 mm	7.84 in / 199 mm
Outer Diameter with Flange.....	8.07 in / 205 mm	9.1 in / 232 mm
Depth.....	3.23 in / 82 mm	3.9; 4.2 in / 98; 107 mm
Weight.....	2.2 lb / 1.0 kg	4.4 lb / 2.0 kg

In-Ceiling Features

Coaxial configuration

Uniform radiation characteristics is capable of filling large listening areas.

Fiberglass-reinforced polypropylene membrane

Not only ensures authentic reproduction of the critical mid-frequency range, but also packs a powerful punch in the bass range.

Fabric dome

Guarantees accurate reproduction of the high-frequency range.

Magnetically-fixed cover grill

Can be removed and refitted without the need for tools. Since the grill covers the entire loudspeaker, it can be color-coded to its surroundings simply by painting the grill. The loudspeaker itself with its four-piece clamping mechanism can remain in place.

Installation

In wall or in-ceiling structures, up to 35 mm thick. A fitting template is included to aid installation.

About US

90 YEARS OF INNOVATION

This year, ELAC celebrates our 90th anniversary with the introduction of the Debut and Uni-Fi speaker series, a new family of powered subwoofers, the awesome Discovery Music Server and Discovery Wireless and Debut Integrated Amplifiers.

A whole new era in The Life of Sound.

In a world of ever-changing brands, products and trends, ELAC builds on its heritage with vision to push thinking beyond the present. This is ELAC, founded on a commitment to making the best sound in the world. It began on September 1, 1926 in Keil, Germany, when Electroacoustic GmbH was founded to focus on the development of sonar technology and the research of signal and sound channels in air and water.

ELAC's passion for music and fascination with sound followed with their first consumer audio product, the PW1 record player in 1948. ELAC continued to lead the burgeoning audio industry with innovative turntables and electronics. During the 1970s and 1980s, every serious music lover had a high-quality turntable, and the fortunate few owned an ELAC, the backbone of the finest sound systems.

By 1984, ELAC began designing loudspeakers in conjunction with AXIOM Electroacoustic Speaker Specialists. One year later, ELAC's newly developed 4Pi omnidirectional tweeter, a driver that combined extended range with broad dispersion, bringing true "high end" to high-end audio. It turned the listening world on its collective ear and launched ELAC into the company of the most elite speaker manufacturers.

ELAC and innovation go hand-in-hand, and in 1993, ELAC introduced the JET folded-ribbon tweeter. With an expanded frequency response up to 35 kHz, the JET tweeter proved that a driver whose response goes beyond the limits of human hearing sounds better over its entire range. The JET has been continually refined and is featured today in both home and automotive applications.

Innovation, craftsmanship and superior performance.

ELAC has earned its reputation—from the beginning—through advanced technology, uncompromising build quality, outstanding European design and sound that is second to none. And now, a whole new range of affordable speakers and electronics brings ELAC quality within reach of dedicated music lovers on a budget.

ELAC offers a complete range of speakers and bold new electronics that bring music to life like never before. Every product we create delivers stunning performance, exquisite craftsmanship and unequalled value. All with unmistakable ELAC style that will be welcome in your home.



Celebrate sound.



Composed, contemporary elegance.

Finding the perfect position for the new Line WS models couldn't be easier. A little wall space is all that these loudspeakers need to unleash their full potential. Despite their shallow cabinet depth of just 84 mm (less than 3½ inches), they use the very latest chassis and driver technology to deliver full-scale sound with deep, powerful bass. Ideal for TV and surround-sound applications, they are also perfect for serious music listening, conveniently mounted on the wall.



WS 1425
Musical and discreet.

A compact model for discreet integration in any room, this loudspeaker brings music to life and features the drive unit from the successful ELAC BS 302 while offering great visual appeal. It creates an extremely consistent soundstage across a wide listening area thanks to its coaxial drive unit. It is ideal for stereo and multi-channel applications.



WS 1445
Tuned to perfection.

This 2-way, bass-reflex model offers formidable bass extension thanks to special bass-reflex tuning. Combined with a silk-dome tweeter, this loudspeaker sounds exceptionally detailed and packs a powerful punch despite its compact dimensions.

WS 1425 Specs

Speaker type.....	2-way, closed
Tweeter.....	1 x 20 mm dome
Midrange.....	n/a
Woofer.....	1 x 85 x 115 mm AS oval
Crossover frequency.....	70 / 2,900 Hz
Frequency response.....	70 to 35,000 Hz
Sensitivity.....	87.5 dB at 2.83 v/1m
Recommended amplifier power.....	20 to 100 wpc
Nominal/peak power handling.....	60 / 75 wpc
Nominal impedance.....	4 Ω; minimum 3.2 Ω @ 85 Hz
Binding posts.....	5-way metal
Cabinet finishes.....	Satin black and white
Accessories.....	Magnetic fixed fabric grill
Dimensions (WxHxD) in./mm.....	8.7"x8.7"x3.9"/220x220x98mm
Net weight (each).....	5.5 lb / 2.5 kg

WS 1445 Specs

Speaker type.....	2-way, bass reflex
Tweeter.....	1 x 25 mm dome
Midrange.....	n/a
Woofer.....	1 x 115 mm AS cone
Crossover frequency.....	2,900 Hz
Frequency response.....	55 to 30,000 Hz
Sensitivity.....	88.5 dB at 2.83 v/1m
Recommended amplifier power.....	20 to 140 wpc
Nominal/peak power handling.....	65 / 90 wpc
Nominal impedance.....	4 Ω; minimum 4 Ω @ 360 Hz
Binding posts.....	5-way metal
Cabinet finishes.....	Satin black and white
Accessories.....	Magnetic fixed fabric grill
Dimensions (WxHxD) in./mm.....	8.7"x15.7"x3.9"/220x400x98mm
Net weight (each).....	xx lb / 4.3 kg



WS 1465 Room friendly

A floorstanding model designed for the wall, the 2½-way, bass-reflex WS 1465 offers an expansive sound and outstanding performance.

WS 1645 Astonishing extension.

This in-ceiling design performs to real hi-fi standards. Thanks to its round shaped mounting hole, this coaxial in-ceiling speaker can be mounted into ceilings and even walls. Because of its nominal impedance of 8 Ω, the IC 1010 is cascadable and can easily be connected to all kinds of amplifiers. Connect it and you'll never need to touch it again.

WS 1665 Expansive sound.

Delivering a truly astonishing performance, the WS 1665 is essentially a 2½-way, bass-reflex floorstanding speaker designed for the wall, and provides an audiophile solution without the usual positioning problems. Equipped with two woofers and the acclaimed JET 5 tweeter, this is the loudspeaker of choice for large listening rooms or if higher playback levels are required. Offering a very similar sound to the WS 1645, but with even greater bass impact, the WS 1665 can also serve as a traditional center loudspeaker in combination with other models.

WS 1465 Specs

2½-way, bass reflex
1 x 25 mm dome
n/a
2 x 115 mm AS cone
600 / 2,700 Hz
50 to 30,000 Hz
89 dB at 2.83 v/1m
20 to 180 wpc
90 / 120 wpc
5 Ω; minimum 4.3 Ω @ 58 Hz
5-way metal
Satin black and white
Magnetic fixed fabric grill
8.7"x25.6"x3.9"/220x650x98mm
16.1 lb / 7.3 kg

WS 1645 Specs

2-way, bass reflex
1 x JET 5
n/a
1 x 115 mm AS -XR cone
3,400 Hz
50 to 50,000 Hz
88.5 dB at 2.83 v/1m
20 to 150 wpc
70 / 100 wpc
4 Ω; minimum 3.9 Ω @ 400 Hz
5-way metal
Satin black and white
Magnetic fixed fabric grill
8.7"x15.7"x3.9"/220x400x98mm
10.4 lb / 4.7 kg

WS 1665 Specs

2½-way, bass reflex
1 x JET 5
(115 mm)
2 x 115 mm AS -XR cone
600 / 3,600 Hz
48 to 50,000 Hz
89.5 dB at 2.83 v/1m
20 to 200 wpc
100 / 130 wpc
5 Ω; minimum 4.2 Ω @ 58 Hz
5-way metal
Satin black and white
Magnetic fixed fabric grill
8.7"x25.6"x3.9"/220x650x98mm
17.2 lb / 7.8 kg



Discover the world of computer audio without the computer.

The Discovery Music Server is designed to be the heart of a serious music system, offering playback of local and streaming music, rich multi-dimensional metadata and multi-room audio, all with an interface that anyone can master in a few minutes.

Keeping in line with quality music, the lossless, high-fidelity music streaming service Tidal® has been tightly integrated into the Discovery's software*. Content from your local collection and content from Tidal are presented in the same beautiful, easy-to-use interface.



DISCOVERY SERIES DS-S101-G MUSIC SERVER
One component, infinite sound.

Adding the Discovery Series DS-S101-G Music Server to an existing system is simple. Connect the Discovery to the internet and one of the outputs to the upcoming ELAC Integrated Amplifier or your existing system.

Adding your personal music collection is a snap. Connect either a hard drive to the rear mounted USB port or point the Discovery to your NAS (Networked Attached Storage) device and the Discovery will take care of the rest, organizing and gathering feature rich meta-data for your entire music collection.

Expanding your Discovery system to other rooms is easy. Whether you want the full functionality of an integrated amplifier or a simple wireless speaker in the kids' room, the Discovery eco-system is ready to grow when you are.

* iOS (64-bit Devices), Android, Windows (7, 8, and 10) and Apple OSX

DS-S101-G Specs

CONNECTIONS

Analog outputs (independent zones): 2
 Coaxial output (independent zone): 1 (192 khz 24-bit max)
 Optical output: 1 (192 khz 24-bit max)
 USB port (mass storage class): 1 USB 2.0
 Ethernet port: 1 gigabit ethernet

END POINT SUPPORT

Discovery, AirPlay and Roon End Point

CONTROL & USER INTERFACE

Roon Essentials Control app: For iOS (64-bit Devices), Android (4.4 and higher), Windows (7, 8, and 10) and Apple OSX (10.8 and higher)

FORMAT SUPPORT

Supported Audio Formats: WAV, AIFF, FLAC, ALAC, OGG, MP3, AAC 192 kHz 24-Bit Audio Formats: WAV, AIFF, FLAC, ALAC
 Native Support for SPDIF/COAX: 24 kHz – 192 kHz

PLAYBACK MODES

Gapless, Crossfade, Shuffle, and Repeat

MULTI-ROOM SUPPORT

Type: Wired and Wireless

INTEGRATED STREAMING SERVICES: TIDAL

TRACK LIMIT: 15,000 Tracks (Combination of Personal and Tidal Library Content)

POWER SUPPLY & CONSUMPTION

Power Supply: 12 VDC 2A
 Power Consumption Normal Operation: 4.8 Watts

DIMENSIONS & WEIGHT

Dimensions (WxHxD): 8-1/4" x 1-7/8" x 4-5/16"
 Weight: 2 lbs

NOTE: The Discovery can be controlled using the free Roon Essentials app for Windows, OS X, iOS, and Android.

DISCLAIMERS AND LEGAL INFORMATION

Roon - Copyright 2015 Roon Labs LLC
 Tidal - Copyright 2013 Aspiro Music AS. All Rights Reserved
 ELAC - Copyright 2016 ELAC GMBH

Third party content services may be changed, suspended, interrupted, or discontinued at any time without notice, and ELAC disclaims any liability in connection with such occurrences.

iOS™ and iPhone™ are registered trademarks of Cisco Systems, Inc., USA, licensed to Apple Inc., USA.

Android™ is a registered trademark of Google Inc., USA.

Discovery Features

It's really very simple - The Discovery Music Server lets users open their personal music vault from another computer, Apple iPad** or Android tablet. Whether your choice is a full ELAC system, powered by an ELAC integrated amplifier and running an ELAC loudspeaker system, or a pair of ear buds, you can listen in one room or around the house with other Discovery-compatible products.

A wave of music. - Discovery delivers music based on relationships between performers and composers, starting from the tracks you choose. TIDAL* delivers no-compromise music streaming, with millions of tracks in lossless, audiophile quality—a bigger music landscape than

ever before. * Separate Tidal Subscription required

Your music, as you like it. -Between users and across devices, you can select from downloads, ripped CDs and streaming services. Your collection is supported by a rich library of images and information—an archive of material that adds depth, knowledge and excitement to your listening.

Audiophile reproduction - The artists and engineers who recorded your music took great care creating it. It's no secret that Discovery takes the same care playing it back.



ELAC AMERICAS, LLC
11145 KNOTT AVE. SUITE E & F
CYPRESS, CA 90630

ELAC.com
©2016 ELAC Americas LLC. All rights reserved. Specifications and design subject to modification without notice.