

for Industrial Uninterruptible Power Supply Systems

AMS Device Manager is an advanced monitoring tool to predict necessary maintenance activities instead of reacting to problems that are already impacting your process.

AMS Device Manager enables maintenance teams to easily monitor field device health status and resolve potential issues before they become costly problems.

Benefits

- **Monitor the complete process.** Permanently check the automation system, instruments, valves, mechanical equipments and Uninterruptible Power Systems from the same screen.
- **Identify, troubleshoot, and resolve UPS issues remotely and efficiently.** Predictive diagnostics and troubleshooting recommendations make maintenance easier.
- **Track and control power quality.** Ensure you are delivering clean power to the load. Protect equipment from the damaging effect of poor quality electrical power.
- **Ensure power supply continuity.** With diagnostics integrated into AMS Device Manager, you can be sure that alerts are not missed due to multiple monitoring systems.
- **Rugged, long-lasting equipment.** Use AMS Device Manager to ensure that any diagnostics within the UPS are addressed quickly to ensure the system is working when you need it most.

Key Features

- **Input / Battery / Output values** are permanently monitored. This means you can act before the process is affected by poor quality power, or worse, a costly shutdown.
- **Real-time information** are delivered to help maintenance people keep your process running and anticipate potential failures.
- **Troubleshooting recommendations** are given in case of UPS fault, so that engineer can easily and efficiently plan maintenance operations.

Application

In process industries where lost production from slower startups and longer downtimes can cause millions of dollars in lost revenue, plant personnel need accurate, real-time information. The AMS Device Manager reduces commissioning and maintenance expenses while improving plant availability and product quality.

The Power of predictive intelligence for critical assets

AMS Device Manager is the premier predictive maintenance software application for automation instruments and valves available today, providing a single tool for HART, FOUNDATION fieldbus, WirelessHART, and Profibus DP device configuration, calibration, documentation, and diagnostics.

Access diagnostics from Industrial Uninterruptible Power Supplies

You can now extend your predictive maintenance program beyond traditional automation assets with the addition of Industrial Uninterruptible Power Supplies from Chloride Industrial Power.

AMS Device Manager users are now able to view and diagnose AC and DC UPS via Profibus DP.



AMS Intelligent Device Manager for UPS

Key Components

AMS Device Manager for Industrial UPS provides the interface for the advanced diagnostics used with PROFIBUS instrumentation. It also stores all remote asset data including tag numbers, names, locations, calibration status, configurations, diagnostics, and documentation. Connect your UPS via DeltaV™ and the PROFIBUS interface to AMS Device Manager, enabling all the benefits of asset management in a single system for all of your critical assets.

UPS Components

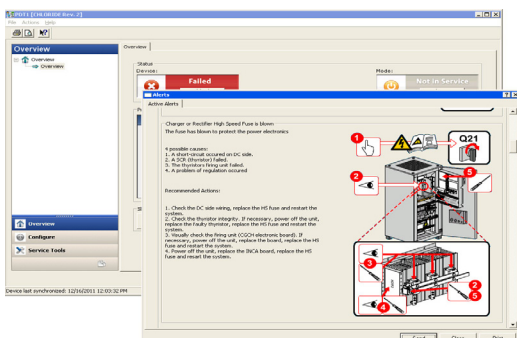
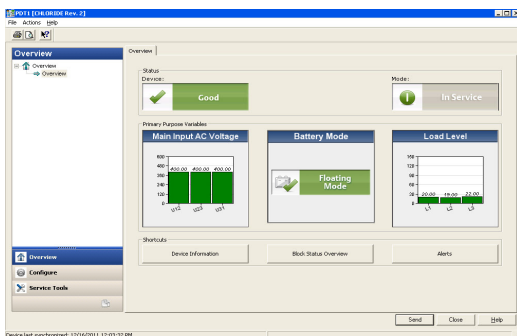
AC UPS Systems, DC UPS systems, and DC/AC inverters can be monitored with AMS Device Manager. Each equipment must be equipped with the approved Profibus DP interface so that the UPS can fully dialogue with the DeltaV™ interface.

AMS Dashboard

AMS Device Manager's focus on human-centered design provides Device Dashboards for Emerson field devices, which now includes Industrial UPS systems.

Device Dashboards deliver a consistent graphical interface for engineers and maintenance personnel during device monitoring and maintenance.

The enhanced user interface offers operators intuitive graphics to aid in making timely, accurate decisions when abnormal operating conditions occur.



AMS Device Manager Core Capabilities

Diagnostics

Quickly check the health of any connected wired or wireless device by viewing its status using the diagnostics and monitoring capabilities in AMS Device Manager. With the addition of IEC-approved Wireless-HART and Profibus DP device support, AMS Device Manager extends predictive diagnostics to new areas of your plant. New measurement points enable a more comprehensive account of the health of your field devices.

Alert Monitor

A powerful, proactive method of diagnosing potential device problems is provided by the Alert Monitor feature. The Alert Monitor summary screen provides an overview of all device alerts, regardless of protocol, and gives you the ability to access additional device information for more details.

Alert latching allows you to identify new alerts and keep track of existing ones. Alerts can also be easily filtered so you can quickly see the information you need.

When your intelligent devices are online with AMS Device Manager, you will know of problems occurring as they happen, not when they have already affected your process and the quality of your product.

Documentation

AMS Device Manager saves time and money by automating documentation around device tasks.

Each device is provided with a Drawings and Notes field, used to create dynamic links to your custom documents and websites. User manuals, installation guides, and technical contact information can be kept right at your fingertips where you need it, not in a filing cabinet in another location.

Additional documentation capabilities include the ability to create reports, perform database searches, and export data into a different format.

The PlantWeb advantage

Get off to a strong start with your technology investment. Use Emerson's PlantWeb Services to ensure you are effectively employing AMS Device Manager. Emerson experts can help you use the diagnostics from your smart devices to full advantage. Our experts will install the application and complete your initial configurations. Then we can implement re-engineered maintenance tasks to optimize your use of AMS Device Manager while integrating data with your enterprise asset management system to enable measurement of improvement to your facility's bottom line.

For more information : www.assetweb.com

Emerson Network Power.
 The global leader in enabling
 Business-Critical Continuity™.

- AC Power
- Connectivity
- DC Power
- Embedded Computing

- Embedded Power
- Industrial Power
- Infrastructure Management & Monitoring
- Outside Plant

- Power Switching & Controls
- Precision Cooling
- Racks & Integrated Cabinets
- Services

Emerson Network Power IS S.A.S
 30 avenue Montgolfier - BP90 - 69684 Chassieu
 Cedex - France
 T: +33 (0)4 78 40 13 56 F: +33(0)4 78 90 58 90
 Industrial.sales.Chloride@Emerson.com
 EmersonNetworkPower.com

Emerson, Business-Critical Continuity and
 Emerson Network Power are trademarks of
 Emerson Electric Co. or one of its affiliated companies.
 ©2013 Emerson Electric Co.
 AMS-DSUK-Rev1-06/2016

While every precaution has been taken to ensure the accuracy and completeness of this literature, Emerson Network Power assumes no responsibility and disclaims all liability for damages resulting from use of this information or for any errors or omissions.