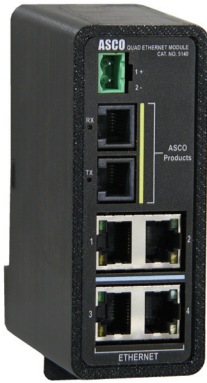


ASCO 5140 Connectivity Module

ASCO 5140
(Accessory
72EE)



The ASCO 5140 Connectivity Module offers remote monitoring for SERIES 300 ATS's and 5210 Power Meter. For the ATS, the optional 5140 provides remote ATS and Generator Control, Monitoring and Connectivity Features via integrated web page dashboards. Once connected to an Ethernet, Wifi or Cellular connection, the dashboards can easily be pulled up by any mobile or desktop device on the network by multiple users.

Control

The control capabilities allows remote transfer and retransfer of the ATS, while allowing you to view time delays and bypass functions. The generators can also be called to start and stop for emergency situations as well as for testing and maintenance. Running the generator periodically ensures that the battery is charged for power anomalies and increases reliability. Generator Pick-up and drop-out setpoints are also viewable for comprehensive understanding of control events.

Monitoring

Monitor transfer switch and generator health, system state, metering and review calculated transfer statistics and activity. Active control timer information allows the operator to anticipate an automated control action, such as, generator start or ATS transfer. The device can also interface to an email server to keep users

up-to-date on alarms and critical power events with alerts.

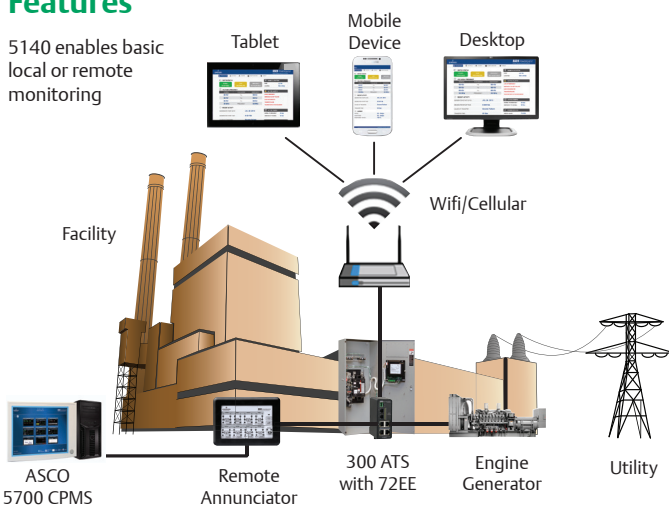
In addition the 5140 can interface to an optional 5210 Power Meter, (stand alone - or with the ATS Acc. 135L). for enhanced monitoring features, such as, power metering, demand and energy usage.

Connectivity

Connect and extract ATS and metering data using industry standard open protocols, such as, Modbus and SNMP. An integrated four port Ethernet Switch maximizes connectivity options and flexibility. Embedded password protection will only allow access to appropriate users, while utilizing AES 128-bit encryption for enhanced data security per National Institute of Standards and Technology (NIST).

Features

5140 enables basic local or remote monitoring



Sample drawing for demonstration purposes only.
Consult ASCO for exact connection specifications.

Control Features

- ATS Transfer/Re-transfer
- ATS Timer Bypass
- Generator Start
- Generator Test

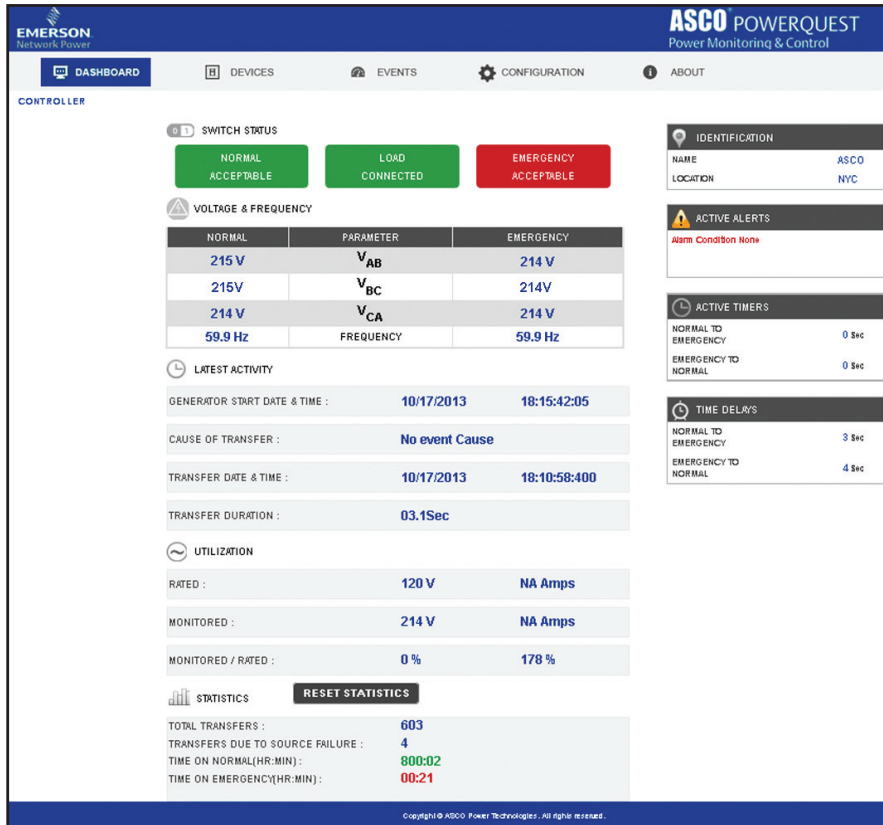
Connectivity Features

- Modbus (over Ethernet or Serial)
- SNMP Protocol
- AES 128 Bit Encryption
- Four Port Ethernet Switch

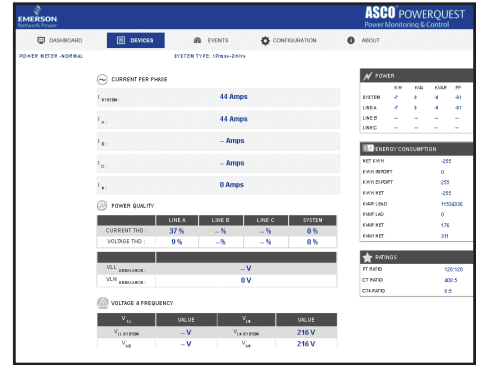
Monitoring Features

- ATS and Generator Stats
 - Alarms
 - Voltage and Frequency
 - Statistics and Activity
 - Email Notifications
 - Event Log (300 Events)
- Optional Monitoring Features
- Energy Consumption, Acc 135L Required
 - Power Demand, Acc 135L Required

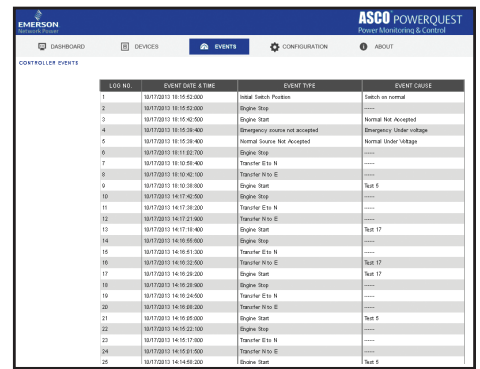
Content Rich Monitoring Screens Enable Real Time Information for Power Metering, Event Logs, Voltages, Time Delays and Alerts. The 5140 Also Allows for Switch Transfer Remotely.



5140 Home Page Dashboard



Power Metering Screen



Events Screen

Specifications and Ordering Information

Environmental	
Operating Temperature	-20 to 70°C
Storage Temperature	-40 to 85°C
Humidity Rating	5% to 95% relative humidity

Hardware	
Dimension (HxWxD)	4.625" x 1.760" x 3.570"
Weight	3lbs
Mounting	DIN Rail
Control Voltage	24VDC

Ordering

Catalog Number	5140
Catalog Name	Quad-Ethernet Module
Transfer Switch Accessory	72EE
Part Number for Kit	948551

Ports

Ethernet

Number of Ports	4
Type of Ports	RJ45, 10/100 BaseTX
Protocol	HTTP, Modbus TCP/IP, SMTP, SNMP