

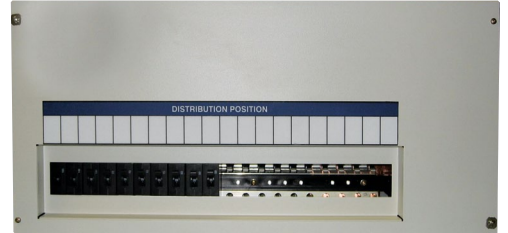
# DC Distribution Panel for NetSure™ Systems

## Key Features

- Flexible mounting options — allow for relay rack or wall mounting
- Compact panel with front access and top feed — fits in 23" relay rack with 6U height
- Field wiring provisions, 2 hole lug terminations — to meet code requirements
- Bullet-nose style breakers — provide easy installation and removal
- Isolated Form-C alarm output
- Return bar

## Product Overview

The DC Distribution Panel for NetSure™ systems is designed to provide overcurrent protection or separation of a single source into multiple feeds on the output of a DC source. This panel can be populated with up to 20 breakers and can be wall-mounted or mounted in a 23" relay rack. The breaker panel accepts bullet-nose style breakers from 1A to 250A. The breakers plug into one of (20) mounting positions. Each position has a localized return landing.

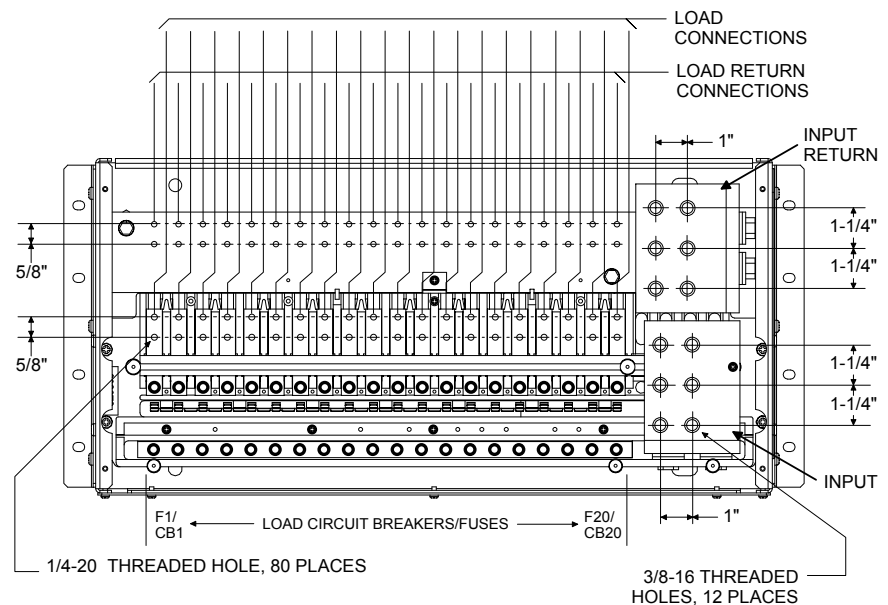


## Application

The DC Distribution Panel is ideal for installations where overcurrent protection or separation of load circuits is required on the output of a rectifier or converter. This panel is compatible with NetSure™ DC power systems from Emerson or as standalone.

## Additional Information

Reference spec. number 545277 for additional specification, engineering or installation information.



## Technical Specifications

Input / Output	
DC Voltage	+24VDC, -24VDC, +48VDC, -48VDC
Input Current	600A*

Environmental	
Operating Temp.	-40°C to 40°C
Safety Compliance	UL/cUL

General	
Dimensions (H x W x D)	10.375" x 23.0" x 6.5" (263mm x 584mm x 165mm)
Approx. Weight (without breakers)	34 lbs. (15.5 Kg)
Input Connections	(3) 3/8"D x 1" on center per polarity, right side of panel
Output Connections	(20) 1/4"D x 5/8" on center, top access

\* Not to exceed 80% of each circuit breaker rating. Steady state.

## Bullet-Nose Type Circuit Breakers

Ampere Rating	Electrical/Mechanical Trip (Black Handle) *	Electrical Trip (White Handle) **
1	101596	102272
3	101597	102273
5	101598	102274
10	101599	102275
15	101600	102276
20	101601	102277
25	101602	102278
30	101603	102279
35	101604	102280
40	101605	102281
45	121997	121998

Ampere Rating	Electrical/Mechanical Trip (Black Handle) *	Electrical Trip (White Handle) **
50	101606	102282
60	101607	102283
70	101608	102284
75	101609	102285
80	121995	121996
90	147555	147554
100	101610	102286
125	516838	516991
150	516839	516993
200 ***	121832	121831
250 ***	121836	121835

NOTE: Load should not exceed 80% of device rating; 125, 150 & 200 amp devices occupy two positions; 250 amp device occupies three positions.

\* Provides an alarm during an electrical or manual trip condition.

\*\* Provides an alarm during an electrical trip condition only.

\*\*\* Ratings greater than 150 amps REQUIRE an empty mounting position between the breaker and any other overcurrent protective device.

[EmersonNetworkPower.com/EnergySystems](http://EmersonNetworkPower.com/EnergySystems) (North America)

[EmersonNetworkPower.eu/EnergySystems](http://EmersonNetworkPower.eu/EnergySystems) (EMEA)

© Emerson Network Power, Energy Systems, North America, Inc. 2014.

Business-Critical Continuity™, Emerson Network Power™, the Emerson Network Power logo, Emerson™ and Consider it Solved are service marks and trademarks of Emerson Electric Co. EnergyMaster™, eSure™, NetPerform™, NetReach™, NetSpan™, NetSure™ and NetXtend™ are trademarks of Emerson Network Power, Energy Systems, North America, Inc. Any other product, brand, or company names or logos are the property of the respective owner.

While every precaution has been taken to ensure accuracy and completeness herein, Emerson Electric Co. assumes no responsibility, and disclaims all liability, for damages resulting from use of this information or for any errors or omissions. Specifications subject to change without notice.

**EMERSON. CONSIDER IT SOLVED.™**