

■ Integrated Cabinet Solutions
For *Business-Critical Continuity™*

DCM™ Modular Rack System

Advanced Features and Customizable Options For Unique Data Center Needs



It All Starts With The DCM™ Rack

A Global Cabinet For Your Universe

The DCM modular rack platform from Emerson Network Power allows facility managers and IT professionals manage server, switch, and termination applications.

DCM Modular Rack was designed as the base element for all of Emerson Network Power's row and rack solutions and is compatible with all rack- and row-based Liebert® Power and Liebert Precision Cooling products.

The DCM rack offers all the advanced features and innovative flexibility required to accommodate today's dense and complex IT systems and network gear.

The DCM rack simplifies equipment installation, improves cable management, and increases visibility and control of equipment inside the rack. The rack easily integrates power, cooling, and monitoring systems to provide a complete support system.

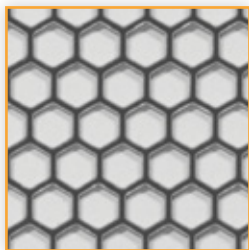


Standardization For The Entire Data Center: It Starts With The DCM Modular Rack

The DCM rack is the basic building block for all of the Emerson Network Power row- and rack-based solutions. It is also compatible with every rack- and row-based Liebert power, cooling, monitoring and cable management product.

- Liebert XDR™ rear door cooling module, part of the Liebert XD system, attaches easily to the DCM rack — an extremely efficient high density cooling solution.
- Liebert MB Modular Bus Power distribution mounts directly to the top cover of the DCM rack. This mounting style not only brings high capacity power distribution directly to the rack and row level, but also saves significant amounts of labor time and cost.
- Emerson Network Power offers several methods of Aisle Containment, with styles that either mount directly to the cabinet or to the ceiling in the data center. Containment is an effective means to increase capacity and efficiency of the room cooling system.
- Emerson Network Power family of rack PDUs effectively distribute power to the rack level. These PDUs are designed to easily mount in the DCM rack platform.
- The cabinet of the Liebert CRV™ row-based precision cooling system is based on the DCM rack frame — a perfect physical match that provides efficient, effective rack cooling.

Features



83+% Open Area
For Improved Airflow,
Highest In The Industry



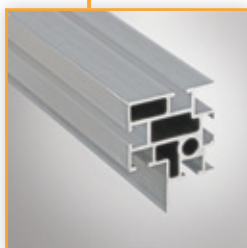
Tool-Less Shelf
Mounts In Square
Holes On 19" Rails In
Seconds



Spring Nut In T-Slot
Allows Component
Mounting Anywhere In
Cabinet Frame



Doors Open to 135°
Lift-Off Tool-Less Internal
Hinges Allow For Easy Door
Removal And Greater Security



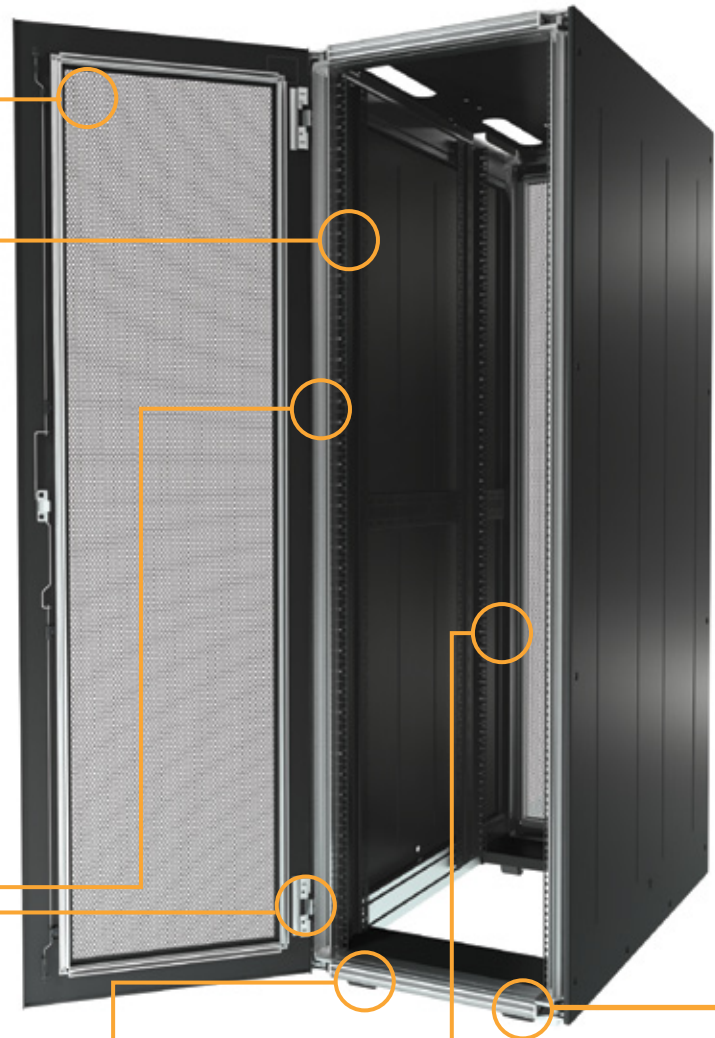
**Lightweight
Aluminium Frame**
Makes The Cabinet Easier
For A Single Person To Move



**Tool-Less Cable
Management on Frame**
Insert And 1/4 Turn, Installs
In A Second



Low Profile Casters
Allows 42U Cabinet To
Roll Through Standard
Doorway



DCM™ Network Rack for Cisco 7000 Series Switches

Components

Model Number	Part Description	Vertical Filler Panel	Baffle	Cabling Fingers
D42CIS7010	42U DCM Rack 800W X 1200D w/sides Supports up to 7010 Cisco chassis	Installed in Front of rack	N/A	36U installed on front right and left vertical rail
D45CIS7010	45U DCM Rack 800W X 1200D w/sides Supports up to two 7010 Cisco chassis	Installed in Front of rack	N/A	36U installed on front right and left vertical rail
D42CIS7010SP	42U DCM Rack 800W X 1200D w/1 side & 1 partition panel Supports up to 7010 Cisco chassis	Installed in Front of rack	N/A	36U installed on front right and left vertical rail
D45CIS7010SP	45U DCM Rack 800W X 1200D w/1 sides & 1 partition panel Supports up to two 7010 Cisco chassis	Installed in Front of rack	N/A	36U installed on front right and left vertical rail
D42CIS7010P2	42U DCM Rack 800W X 1200D w/2 partition panels Supports up to 7010 Cisco chassis	Installed in Front of rack	N/A	36U installed on front right and left vertical rail
D45CIS7010P2	45U DCM Rack 800W X 1200D w/2 partition panels Supports up to two 7010 Cisco chassis	Installed in Front of rack	N/A	36U installed on front right and left vertical rail
D42CIS7018	42U DCM Rack 1000W X 1200D w/sides Supports one 7018 Cisco chassis	Installed in front left and right rear	Viewing from front Installed in upper left of rack	36U installed on front right and left vertical rail
D45CIS7018	45U DCM Rack 1000W X 1200D w/sides Supports one 7018 Cisco chassis	Installed in front left and rear right	Viewing from front Installed in upper left of rack	36U installed on front right and left vertical rail
D52CIS7018	52U DCM Rack 1000W X 1200D w/sides Supports one 7018 Cisco chassis	Installed in front left and rear right	Viewing from front Installed in upper left of rack	36U installed on front right and left vertical rail

Components

Model Number	Part Description	Vertical Filler Panel	Baffle	Cabling Fingers
D52CIS70182	52U DCM™ Rack 1000W X 1200D w/sides Supports two 7018 Cisco chassis	Installed in front left and rear right	N/A*	36U installed on front right and left vertical rail
D42CIS7018SP	42U DCM Rack 1000W X 1200D w/1 side & 1 partition panel Supports one 7018 Cisco chassis	Installed in front left and rear right	Viewing from front Installed in upper left of rack	36U installed on front right and left vertical rail
D45CIS7018SP	45U DCM Rack 1000W X 1200D w/1 side & 1 partition panel Supports one 7018 Cisco chassis	Installed in front left and rear right	Viewing from front Installed in upper left of rack	36U installed on front right and left vertical rail
D52CIS7018SP	52U DCM Rack 1000W X 1200D w/1 side & 1 partition panel Supports one 7018 Cisco chassis	Installed in front left and rear right	Viewing from front Installed in upper left of rack	36U installed on front right and left vertical rail
D52CIS70182SP	52U DCM Rack 1000W X 1200D w/1 side & 1 partition panel Supports two 7018 Cisco chassis	Installed in front left and rear right	N/A*	36U installed on front right and left vertical rail
D42CIS7018P2	42U DCM Rack 1000W X 1200D w/2 partition panels Supports one 7018 Cisco chassis	Installed in front left and rear right	Viewing from front Installed in upper left of rack	36U installed on front right and left vertical rail
D45CIS7018P2	45U DCM Rack 1000W X 1200D w/2 partition panels Supports one 7018 Cisco chassis	Installed in front left and rear right	Viewing from front Installed in upper left of rack	36U installed on front right and left vertical rail
D52CIS7018P2	52U DCM Rack 1000W X 1200D w/2 partition panels Supports one 7018 Cisco chassis	Installed in front left and rear right	Viewing from front Installed in upper left of rack	36U installed on front right and left vertical rail
D52CIS70182P2	52U DCM Rack 1000W X 1200D w/2 partition panels Supports two 7018 Cisco chassis	Installed in front left and rear right	N/A*	36U installed on front right and left vertical rail

*This rack the baffle is intentionally left out so it can support two 7018 chassis's

Cabinet Part Numbering Description

Use The Matrix To Create Your Part Number.

Choose, in order, the: height, width, depth, front door type, rear door type, and side panel number and type.

Sample Part Number:

This part number indicates a DCM cabinet with 78” height frame, 23.6” width with sides, 43.3” depth with doors, single perforated front door, split perforated doors, two side panels, black paint and two sets of 19” rails.

D	K	6	B	1	2	2	0	0	1 Factory installed accessories	2 Factory Installed PDU's
Product	Height	Width	Depth	Front Doors	Rear Doors	Side Panel	Reserved	Reserved		
D=DCM	K=2000mm (42U)	6=600mm (23.6")	A=1000mm (39.4")	0=No door	0=No door	0=None	-	-	0=No Factory Installed Accessories	0=No Factory Installed PDU's
	L=2100mm (45U)	7=700mm (27.6")	B=1100mm (43.3")	1=Single perforated door	1=Single perforated door	1=1 Side panel			1=Yes Factory Installed Accessories	1=1 Factory Installed PDU
		8=800mm (31.5")	C=1200mm (47.3")	2=Split perforated doors	2=Split perforated doors	2=2 Side panels				2=2 Factory Installed PDU's
						3=1 Partition				3=3 Factory Installed PDU's
						5=1 Side panel and 1 partition panel				4=4 Factory Installed PDU's

Multiple Sizes to Fit Your Needs

The table to the right shows the measurements for the different height, width and depth options available in the DCM rack.

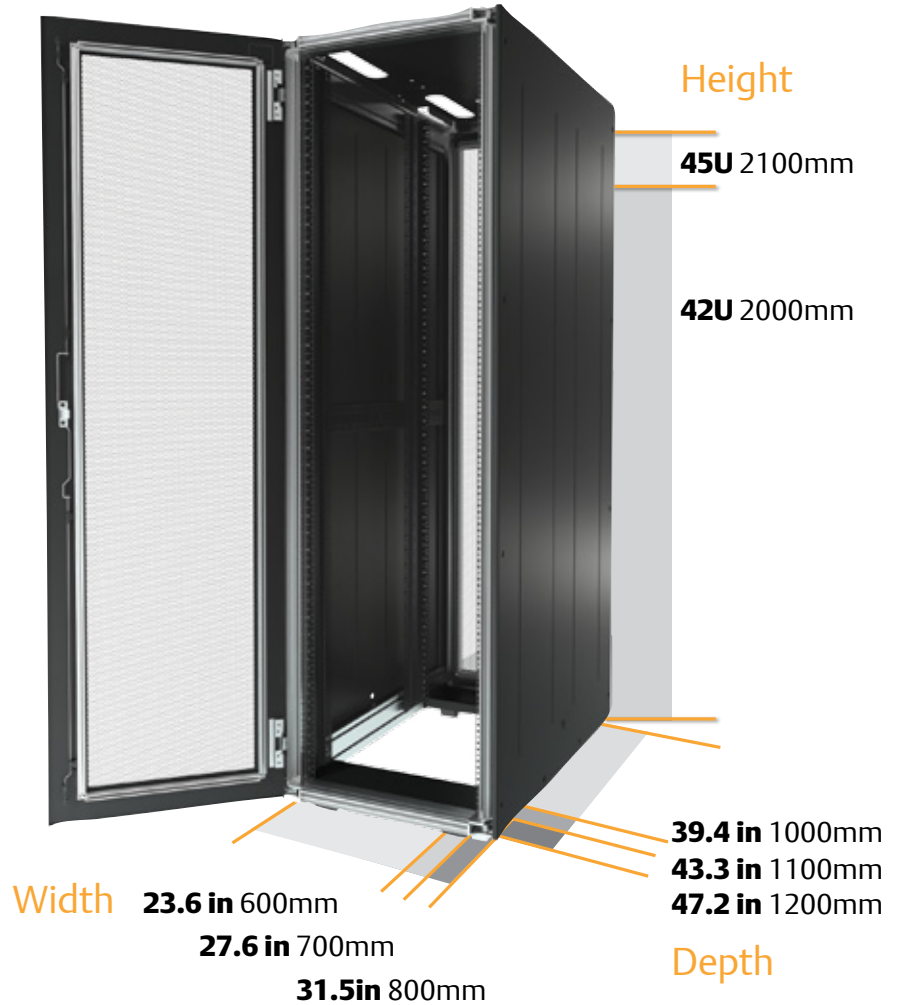
Part	Part Number	Description					
H Height		Frame		Leveling Feet		Casters	
		IN	MM	IN	MM	IN	MM
	K	77.5	1968	78.1	1986	78.6	1999
	L	82.8	2103	83.4	2121	83.9	2134
W Width		No Sides			With Sides		
		IN	MM	IN	MM		
	6	23.3	591	23.6	600		
	7	27.2	691	27.6	700		
	8	31.1	791	31.5	800		
D Depth		No Doors			With Doors		
		IN	MM	IN	MM		
	A	38.8	986	39.4	1000		
	B	42.8	1086	43.3	1100		
	C	46.7	1186	47.2	1200		

DCM™ Rack Dimensions



Dimensions That Meet Your Requirements

- The DCM cabinet is Emerson Network Power's global rack, available in all corners of the world for data center consistency.
- The 42U x 44" (1100mm) deep rack is the global standard for all of Emerson Network Power's row based Power and Cooling products, ensuring data center consistency.
- Metric footprint for global applications.
- OSHPD rated version available.



Cable Management

- Full height PDU bracket, that doubles as a cable management rail, available as an option.
- Two ¼ turn tool-less cable management pieces offer the ultimate in flexibility in cable management. These can be installed in any internal frame surface, on the outside edge of the 19" rail or on the PDU/Cable Management rail.
- The DCM rack top cover and horizontal cable routing system easily directs cables along the top of the row of racks.

Cable Management

Description	Part Number
Individual Cable Management	
Velcro strap, tool-less, pack of 10	002185060
Velcro strap, tool-less, pack of 100	002185080
Lobster Claw, tool-less, pack of 10	002185050
Lobster Claw, tool-less, pack of 100	002185070
Horizontal Cable Management 19" mount	
1U 19" mount cable routing panel with D Rings	011171448
19" horizontal cable support trough	050400558
1U Horizontal Cable Manager	548784P1
2U Horizontal Cable Manager	548785P1

Description	Part Number
Top Cover based Horizontal cable routing system, 1 kit includes front and rear trim piece and center trough for 600mm (24") wide DCM cabinets. Mounts tool-lessly on top cover.	537876G1
Top Cover based Horizontal cable routing system, 1 kit includes front and rear trim piece and center trough 700mm (28") wide DCM cabinets. Mounts tool-lessly on top cover.	537887G1
Top Cover based Horizontal cable routing system, 1 kit includes front and rear trim piece and center trough 800mm (32") wide DCM cabinets. Mounts tool-lessly on top cover.	537877G1
Top cover based horizontal cable routing system, 1 kit includes front and rear trim piece and center trough for 1000mm (40") wide DCM cabinet. Mounts tool lessly on top cover.	548583G1
Kit of 2 front to back trim pieces for DCM cabinets. 1 each for end of aisle. For 1000mm (40") deep DCM cabinets. Mounts tool-lessly on top cover.	537878G1
Kit of 2 front to back trim pieces for DCM cabinets. 1 each for end of aisle. For 1100mm (44") deep DCM cabinets. Mounts tool-lessly on top cover.	537879G1
Kit of 2 front to back trim pieces for DCM cabinets. 1 each for end of aisle. For 1200mm (48") deep DCM cabinets. Mounts tool-lessly on top cover.	537880G1

Vertical Cable Management

Description	Part Number		
Kit of (2) 18U fingers with 1U center spacing, mounts tool lessly on 19" rails	010200078		
Kit of (2) CBL Cov 600-700 18U	542970P1	Kit of (2) BCKPL 600 to 700 18U	542974P1
Kit of (2) CBL Cov 6-8 & 7-7 18U	542971P1	Kit of (2) BCKPL 6-8 & 7-7 18U	542975P1
Kit of (2) CBL Cov 700 to 800 18U	542972P1	Kit of (2) BCKPL 700-800 18U	542976P1
Kit of (2) CBL Cov 800 to 800 18U	542973P1	Kit of (2) BCKPL 800-800 18U	542977P1



Velcro strap, tool-less

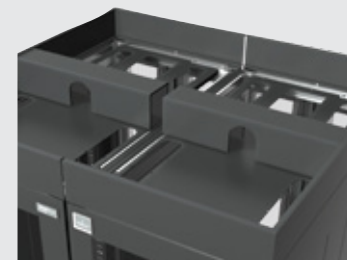


Lobster Claw , tool-less



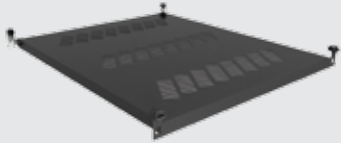
Horizontal Cable Manager
Mounts on the EIA rails to easily
manager cables.
Available in 1U and 2U.

1U & 2U horizontal cable manager

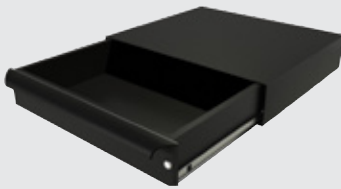


Top Cover Horizontal Cable
Routing System and Front To
Back Trim Pieces

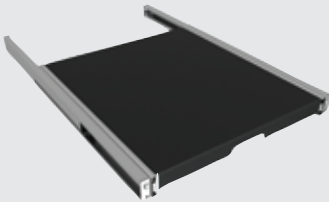
Air Flow Management, Shelves and Brackets



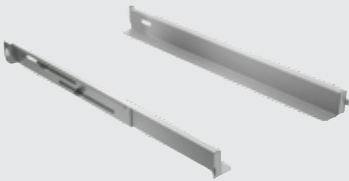
19" Fixed tool-less shelf



2U Drawer, mounts on 19" rails



19" Tool-less Telescopic Shelf



"L" Shaped Depth Support Rail



Tool-less Blanking Panel

Shelves, Blanking Panels and Drawers

Description	Part Number
Fixed tool-less shelf, 275 lb rating	002185000
2U fully enclosable and lockable drawer, mounts on 19" rails 30lb load rating	011139278L
Tool-less telescopic shelf, 110 lb rating	535809G1
"L" shaped depth support rails, 2 pieces	542777G1L
600mm W XDV mounting bracket	543548G1
700mm W XDV mounting bracket	543551G1
800mm W XDV mounting bracket	543552G1
1000mm W XDV mounting bracket	548515G1

Description	Part Number
1U tool less blanking panel that mounts in 19" rails with square holes. Qty: Box of 10	010200087
2U tool less blanking panel that mounts in 19" rails with square holes. Qty: Box of 5	010200088
RPCBDM Bracket mounts to extrusion	538619G1L
RPCBDM Bracket mounts to T-slot	541100G1L
1U metal blanking panel with Brush	542190G1L

Vertical Blanking Panels

Full height vertical blanking panels that mount to outside edge of 19" rail and extend to the plane of the side panel. The vertical panels for the DCM rail utilize 2 half height panels per side. Each kit is enough for 1 cabinet. Each panel has three 1U vertical cutouts that may be used for cable pass through or mounting, or may be covered with the included metal blanking panels.

Dimension	Part Number
42U x 700mm (28")	539952G2L
42U x 800mm (32")	539957G2L
45U x 700mm (28")	539961G2L
45U x 800mm (32")	539962G2L

Air Diverter for IT Switches	
4U	540785G1L
12U	540785G2L
15 U	540785G3L
21U	540785G4L

Set of (2) 19" Rails	
42U	539814G1
45U	539818G1

Side Panels, Partition Panels, and Doors

Handles And Lock Accessories

Handles and Lock Accessories	Part Number
Handle for DCM Rack	000784649
Lock Insert kit for DCM Handle, 1 insert and 2 keys	540275G1L
Side panel insert and 2 keys	011399067L

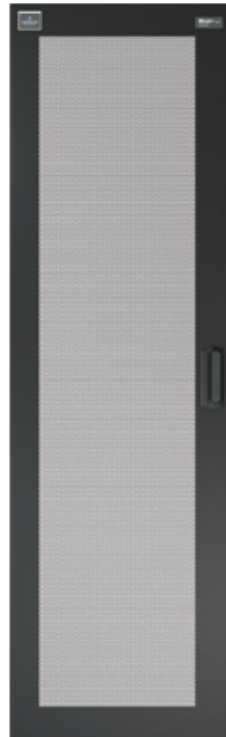
Partition Panels

Partition Panels	Part Number
42U x 40" (2000x1000)	539920G1L
42U x 44" (2000x1100)	539920G3L
42U x 48" (2000x1200)	539920G5L
45U x 40" (2100x1000)	539920G7L
45U x 44" (2100x1100)	539920G9L
45U x 48" (2100x1200)	539920G11L

DCM Rack Side Panels

Side Panels	Part Number
42U x 40" (2000x1000)	538521G4L
42U x 44" (2000x1100)	538521G5L
42U x 48" (2000x1200)	538521G6L
45U x 40" (2100x1000)	538521G7L
45U x 44" (2100x1100)	538521G8L
45U x 48" (2100x1200)	538521G9L

DCM Rack Doors



Doors	Part Number
42U x 24" (2000x600) single door	538444G4L
42U x 28" (2000x700) single door	538444G5L
42U x 32" (2000x800) single door	538444G6L
42U x 24" (2000x600) split door	539273G4L
42U x 28" (2000x700) split door	539273G5L
42U x 32" (2000x800) split door	539273G6L
45U x 24" (2100x600) single door	538444G7L
45U x 28" (2100x700) single door	538444G8L
45U x 32" (2100x800) single door	538444G9L
45U x 24" (2100x600) split door	539273G7L
45U x 28" (2100x700) split door	539273G8L
45U x 32" (2100x800) split door	539273G9L



Handle for
DCM rack



Partition Panel
42U x 48"



Side Panel

- Doors come standard with push button lock insert. Cabinet can be left unlocked or locked for greater security.
- Additional locking systems, including unique lock inserts or electronic locks available as options.
- The 42U x 24" (600mm) wide product readily accepts the Liebert XDR rear door high density cooling system. This system provides 20kW of passive cooling, essentially rendering the cabinet "heat neutral" up to the rated heat load.
- Open base for cable entrance. Leveling feet are standard with casters an easy add option.
- All panels (tops, side panels and 19" rails) are electrically grounded to the frame. A grounding plug is provided, making it easy to install your ground wire to electrically ground the cabinet to building earth.
- Side panels have optional locking system and are easily released.

Hardware and Accessories



Low profile 1/4 turn fastener



High profile 1/4 turn fastener



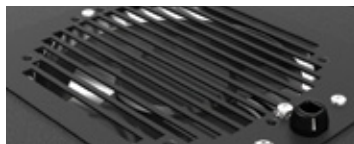
1/4 Turn Metal Fastener



Horizontal Caster Bracket



Tool-less Baying/Cluster Kit



Fan For Top Cover



Anti Tip System

Hardware And Other Rack Accessories

Description	Part Number
M6 cage nuts, screws and washers, bag of 50 each	546189G1
Low profile, 1/4 turn plastic mechanical fastener, bag of 10	010200085
High profile, 1/4 turn plastic mechanical fastener, bag of 10	010200086
1/4 turn metal mechanical fastener, bag of 10	536650G1

Caster Kits

Description	Part Number
Set of 2 for 600mm (24") wide DCM rack	539994G1
Set of 2 for 700mm (28") wide DCM rack	539996G1
Set of 2 for 800mm (32") wide DCM rack	539997G1

Baying / Cluster Kits

Description	Part Number
42U Tool less baying/cluster kit, 1 set to cluster 2 cabinets	539608G2
45U Tool less baying/cluster kit, 1 set to cluster 2 cabinets	539608G3

Fans For Top Cover

Description	Part Number
1000L Low noise	163796G1L
1000H high ambient	163796G3L

Anti Tip System

Description	Part Number
Anti Tip System	540254G1L

Rack PDU (Power Distribution Units)

It is rare to have a rack discussion without also talking about the rack PDU. According to Data Center Users' Group™ findings, the average power consumption in the Enterprise Data Center is now approximately 8kW per rack, with projections to grow to 10kW per rack by 2012. In the Small to Medium Business space, (SMB) the average today is 6kW per rack. Couple this increased power density with various monitoring and control needs, and the issue of proper PDU selection becomes critical to effective Data Center infrastructure deployment.

The Emerson Network Power family of rack PDU features varying levels of monitoring and control. These PDUs offer choices of input phase, input/output ampacity and input/output voltage to provide you with the best solution for the application you are facing today, or foresee in the future.

Highest Standard Operating Temperature in the Industry:

Each rack PDU is rated for operation up to 55C/131F, delivering reliable performance in hostile back-of-the-rack environments.

Broadest Offering of Rack PDU:

Basic to adaptive solutions to fit any rack distribution needs.

Rugged Construction:

Engineered to be reliable and long lasting.

Note: For more information on configuring a rack PDU to meet specific site needs, consult Emerson Network Power Rack PDU Systems Product Selection Guide (SL-20828)

Liebert® MPX™:

This Adaptive Rack PDU offers breakthrough, configurable/modular power and management technology for the dynamic Data Center, where change in receptacle type and/or voltage may be foreseen over the upcoming years. This family offers products ranging from 1.9kW-14.4kw of output.



Liebert MPH™:

The Managed Rack PDU offers several levels of metering in addition to control capabilities with connected equipment. This family offers products ranging from 1.9kW to 8.6kW.



Knurr DI-STRIP®:

For Data Centers with basic distribution needs, the Basic Rack PDU delivers simple and expandable distribution in a robust package. The basic offering from Knurr, is available in a family of products ranging from 1.4-24.4kW of output.



Number of Rack PDU's required to supply 8kW of Output Power, based on Input Phase, Input Amps and Supply.

Input Phase	Input Amps	Input Voltage	kW Output	# PDUs
1	15	120	1.4	6
1	20	120	1.9	5
1	30	120	2.9	3
1	15	208	2.5	4
1	30	208	5.0	2
3	30	208	8.6	1
3	60	208	17.3	1

Liebert® MPX™ — Adaptive Rack PDU



Now you can meet the challenge of future connected power requirements with Liebert MPX, the most responsive and adaptive rack PDU available. Thanks to Liebert MPX adaptive technology, you can economically increase the availability of critical systems by leveraging hot-swappable modular power — and manage it all the way to the receptacle level.

Reconfigurable Power Capacity And Distribution

Liebert MPX is the perfect choice to respond to the needs of a growing data center. Relocate or add IT equipment to support changing needs, by easily reconfiguring the power input and distribution.

Liebert MPX Features:

- Industry leading operating temperature — up to 55 °C / 131 °F to support hot Internal rack environments.
- Accurate power metering of +/-1% voltage & current for assured oversight.
- Energy and power metering down to the individual receptacle.
- Comprehensive alarming including notification of overloaded branch circuits.
- Environmental sensing with threshold and alarm set-points.
- Notification on the loss or removal of individual rack equipment loads.
- IP consolidation via Rack PDU Array™.

Liebert MPX Benefits:

- Adaptive capacity, distribution, monitoring, control and management of critical devices.
- Flexibility to respond to constant change.
- Buy only what you need and build on your investment.
- Secure communication.

Liebert Power Monitoring Capabilities

The operation of Liebert MPX can be monitored using:

- Liebert RPC™ Rack PDU Card
- Liebert Nform™ Monitoring System
- Liebert SiteScan® Web Centralized Monitoring System
- Secure Web/SNMP Interfaces
- Liebert RPC-BDM Local Display Module

Scalable Design Allows Onsite Configuration To Fit Immediate IT Equipment Needs

The Liebert MPX Adaptive Rack PDU features essential characteristics to support fast-paced, growing data centers. Hot swappable output power deploys easily to get IT equipment online quickly.

To configure your Liebert MPX, simply follow these easy steps:

- 1. Select a Power Rail Chassis** — distributes power and communications to all of the support modules
- 2. Select a Power Entry Module** — connects input power to power rail chassis. May be reconfigured to support changing power needs, single and three phase input. Can be positioned for top or bottom rack entrance.
- 3. Select an Input Power Cord** — allows easy power reconfiguration to change input power to meet changing requirements.
- 4. Select the Rack PDU Card (Liebert RPC)** — provides upgradable network communications, sensor and local display interface.
- 5. Select the Rack PDU Display** — displays power parameters and alarms for up to four Liebert MPX systems. Display orients for horizontal or vertical installation and reading.
- 6. Select Branch Receptacle Modules** — provide hot swappable output power connectivity and communications management. May be remotely controlled and metered, providing operator flexibility and allowing increased site security.



Liebert® MPH™

Liebert MPH Features:

- Monitors electrical and environmental parameters with set threshold and alarm tools.
- Industry leading operating temperature—up to 55 °C/131 °F to support hot internal rack environments.
- Controls and manages individual receptacles.
- Predicts overcurrent conditions before they become critical.
- Remote monitoring at strip and branch.
- Card-based communications. Local displays are easily located to suit a crowded and changing rack environment.
- Supports mounting in 19" EIA, 42U rack environments—offered in vertical, zero U and rackmount form factors.
- Allows you to predict failing conditions before they occur and proactively manage connected equipment for maximum uptime.
- Flexible power cord mount is user adjustable for horizontal or vertical orientations.

Part Number	Voltage	Amps	Input Phase	Input Plug	Output Receptacles	Branch Monitored / Receptacle Controlled	Form Factor
MPH-NBR09AXXC30	120	20	1PH	L5-20P	(9) Nema 5-20R	Branch Monitored	Rackmount
MPH-NBR09AXXD30	120	30	1PH	L5-30P	(9) Nema 5-20R	Branch Monitored	Rackmount
MPH-NBR09NXXE30	200-240	20	1PH	L6-20P	(9) C-13	Branch Monitored	Rackmount
MPH-NBR09NXXF30	200-240	30	1PH	L6-30P	(9) C-13	Branch Monitored	Rackmount
MPH-NBV27AXXC30	120	20	1PH	L5-20P	(27) Nema 5-20R	Branch Monitored	Vertical
MPH-NBV27AXXD30	120	30	1PH	L5-30P	(27) Nema 5-20R	Branch Monitored	Vertical
MPH-NBV27NXXE30	200-240	20	1PH	L6-20P	(27) C-13	Branch Monitored	Vertical
MPH-NBV27NXXF30	200-240	30	1PH	L6-30P	(27) C-13	Branch Monitored	Vertical
MPH-NBV27NOXF30	200-240	30	1PH	L6-30P	(21) C-13 & (6) C-19	Branch Monitored	Vertical
MPH-NBV27AXXH30	120/208	30	3PH	L21-30P	(27) Nema 5-20R	Branch Monitored	Vertical
MPH-NBV27NXXH30	120/208	30	3PH	L21-30P	(27) C-13	Branch Monitored	Vertical
MPH-NBV27ANXH30	120/208	30	3PH	L21-30P	(21) C-13 & (6) 5-20R	Branch Monitored	Vertical
MPH-NBV27NOXH30	120/208	30	3PH	L21-30P	(21) C-13 & (6) C-19	Branch Monitored	Vertical
MPH-NCR09AXXC30	120	20	1PH	L5-20P	(9) Nema 5-20R	Receptacle Controlled	Rackmount
MPH-NCR09AXXD30	120	30	1PH	L5-30P	(9) Nema 5-20R	Receptacle Controlled	Rackmount
MPH-NCR09NXXE30	200-240	20	1PH	L6-20P	(9) C-13	Receptacle Controlled	Rackmount
MPH-NCR09NXXF30	200-240	30	1PH	L6-30P	(9) C-13	Receptacle Controlled	Rackmount
MPH-NCV27AXXC30	120	20	1PH	L5-20P	(27) Nema 5-20R	Receptacle Controlled	Vertical
MPH-NCV27AXXD30	120	30	1PH	L5-30P	(27) Nema 5-20R	Receptacle Controlled	Vertical
MPH-NCV27NXXE30	200-240	20	1PH	L6-20P	(27) C-13	Receptacle Controlled	Vertical
MPH-NCV27NXXF30	200-240	30	1PH	L6-30P	(27) C-13	Receptacle Controlled	Vertical
MPH-NCV27NOXF30	200-240	30	1PH	L6-30P	(21) C-13 & (6) C-19	Receptacle Controlled	Vertical
MPH-NCV27AXXH30	120/208	30	3PH	L21-30P	(27) Nema 5-20R	Receptacle Controlled	Vertical
MPH-NCV27NXXH30	120/208	30	3PH	L21-30P	(27) C-13	Receptacle Controlled	Vertical
MPH-NCV27ANXH30	120/208	30	3PH	L21-30P	(21) C-13 & (6) 5-20R T-Slots	Receptacle Controlled	Vertical
MPH-NCV27NOXH30	120/208	30	3PH	L21-30P	(21) C-13 & (6) C-19	Receptacle Controlled	Vertical

Knurr™ DI-STRIP™



Knurr DI-STRIP Features:

- Multiple configurations and input power options available, including international compatibility.
- The addition of the Basic Rack PDU Expansion Unit allows for growth.
- 10ft. (3m) power supply cable offers room for movement.
- Reliable and robust solution.
- Worldwide approvals and certification.
- Full-length brass busbar on Standard models enhances operational reliability.
- Standard system extruded casing and a HighPower system heavy duty casing provide durability.
- Industry leading operating temperature — up to 55 °C/131 °F to support hot internal rack environments.
- Simple and quick installation on the rack's extrusion requires minimal space and reduces installation time.

Knurr DI-STRIP Basic

P/N	Amps	Input Phase	Voltage	Input Plug	Output Receptacles	Mounting Configuration
035351011	15A	1PH	120V	5-15P	(9) 5-15R	Vertical
035351041	20A	1PH	120V	L5-20P	(9) 5-20R	Vertical
035351021	15A	1PH	120V	5-15P	(12) 5-15R	Vertical
035351031	15A	1PH	120V	5-15P	(18) 5-15R	Vertical
035351051	20A	1PH	120V	5-20P	(12) 5-20R	Vertical
035351061	20A	1PH	120V	L5-20P	(12) 5-20R	Vertical
035351071	20A	1PH	120V	IEC-C20	(12) 5-20R	Vertical
035351081	30A	1PH	120V	L5-30P	(24) 5-20R	Vertical
035352011	20A	1PH	208-240V	L6-20P	(9) IEC-C13	Rack Mount
035352021	20A	1PH	208-240V	IEC-C20 Inlet	(9) IEC-C13	Rack Mount
035352041	20A	1PH	208-240V	IEC-C20	(9) IEC-C13	Rack Mount
035352051	30A	1PH	208-240V	L6-30P	(4) IEC-C14	Rack Mount
035352031	20A	1PH	208-240V	L6-20P	(12) IEC-C13	Vertical
035352041	20A	1PH	208-240V	IEC-C20 Inlet	(12) IEC-C13	Vertical
035352061	30A	1PH	208-240V	L6-30P	(24) IEC-C13	Vertical
035352078	30A	1PH	208-240V	L6-30P	(20) IEC-C13 and (4) IEC-C19	Vertical
035353011	30A	3PH	120/208V	L21-20P	(6) IEC-C19	Vertical
035353021	20A	3PH	120/208V	L21-20P	(18) IEC-C13 and (6) IEC-C19	Vertical
035353031	20A	3PH	120/208V	L21-20P	(27) IEC-C13 and (6) IEC-C19	Vertical
035353041	20A	3PH	120/208V	L21-20P	(27) 5-20R	Vertical
035353051	30A	3PH	120/208V	L21-30P	(18) IEC-C13 and (6) IEC-C19	Vertical
035353061	30A	3PH	120/208V	L21-30P	(27) IEC-C13 and (6) IEC-C19	Vertical
035353078	60A	3PH	120/208V	IEC60309	(42) IEC-C13 and (6) IEC-C19	Vertical
035353088	50A	3PH	120/208V	2 X IEC60309	(42) IEC-C13 and (6) IEC-C19	Vertical

Rack PDU Mounting Brackets For DCM™ Rack

All Liebert and Knurr Rack PDUs easily integrate into the DCM Rack.

Description	Part Number
2PC Tool Less PDU mounting Brackets for DCM Rails	
2 piece PDU mounting bracket system for 700mm (28") and 800mm (32") wide cabinets with DCM Rack rail system. Holds (1) 2" wide max PDU with quick mount system. All Knurr DI-STRIP and Liebert MPH in catalog *EXCEPT* 03535302078, 0353532088	
For right hand rail	539917G1L
For left hand rail	539918G1L

Description	Part Number
Full height PDU mounting bracket, 4" wide. Holds (2) 2" wide max PDU's with Quick Mount button system (all Knurr DI-STRIP and Liebert MPH listed in catalog) *EXCEPT* 035352078, 0353532088	
42U cabinets	539486G1L
45U cabinets	539487G1L



PDU Mounting Bracket



Full Height PDU Mounting Brackets (4")

Liebert® MB™ Modular Busway



Liebert MB Busway provides high density power distribution to the rack while eliminating cable clutter that can reduce airflow.

System Compatibility

Liebert MB is compatible with the DCM™ rack and the entire family of Liebert power products—rack and room PDUs, UPS systems and surge protective devices—providing power distribution and protection.

- Rackmount Liebert MB installs on top of DCM rack.
- Works with Liebert MPX™, Liebert MPH™ and Knurr DI-STRIP® rack PDUs.
- Works with row-based UPS and distribution.

Flexibility

- Easy to change bus plugs.
- Available in 100, 225 & 400A ratings.
- Increases space efficiency and improves airflow.
- Integrates easily into new or existing datacenter layouts.
- Provides dual bus or single bus configurations.

Higher Availability

- Fully rated design.
- Certified to UL 857 & CSA 22.2.
- Hot swappable bus plugs keep systems up and running even during changes.

Lowest Total Cost Of Ownership.

- Requires fewer and less expensive power cables.
- Installs with 15-30% less time and cost compared to cables and conduit.
- Installs with tool-less mounting to DCM rack.
- Plug-n-play bus plugs to rack PDU's can be installed by anyone—no electrician needed.

Ideal Applications

- Data centers of any size.
- Raised and non-raised floors.
- Single or Dual bus configurations.
- Low or high-density power distribution.
- Data centers with frequent configuration changes.



Aisle Containment

Emerson Network Power offers three types of Aisle Containment systems and flexible door options.

Modular System

This door, ceiling or combined system is designed for DCM™ and DCF™ cabinets with 4' or 6' aisles, and requires a uniform row.

The Modular system is physically attached to the rack, and features sliding doors with Lexan (polycarbonate) windows. It has aluminum profile roof panels that span the width of the aisle. Individual panels are removable for servicing and cleaning.

Vertical System

This door, ceiling or combined solution uses a vertical vinyl strip design to accommodate non-uniform rack heights and nonuniform rows. While it is the most flexible solution to deploy, it does require a drop ceiling. The design is a simple one that incorporates current fire detection and suppression.

Retractable System

This ceiling system that is designed exclusively for a 4' and 6' aisle and requires a uniform row. If that uniformity is present, this is the simplest ceiling to implement. It can be used in conjunction with the RS Universal Door to make it a combined solution.

Door Options

Sliding lexan doors or curtain doors can be chosen for the ends of the aisle. In the event of an emergency, the aisle can be quickly exited by simply sliding the doors open, or moving the curtain out of the way. The doors are fitted with Lexan windows.



Modular System

The Modular System is a door, ceiling or combined solution designed for DCM and DCF cabinets.

The roof panels are transparent Lexan allowing the room lighting to be used. The panels are easy to remove for servicing. Since it attaches directly to the rack, it is essential that the two rows of racks have uniform heights along the total length of the aisle. This solution requires a continuous run, so there cannot be gaps, such as missing cabinets in the line-up or obstructions, such as columns or pillars in the row.

Vertical System

The Vertical System is a door, ceiling or combined solution that uses a curtain design to accommodate non-uniform rows and rack heights, and third party racks. The Vertical System requires a drop ceiling. If a drop ceiling is present, this is the simplest combined solution to deploy.

Most curtain system products require hardware to be installed. The Vertical System is completely tool-less. It starts with a small clip that mounts on the drop ceiling runner. This clip has a small, round ball at the end that slides into a track on the aluminum extrusion that holds the vinyl material. Since the ball turns freely in the slot, the extrusion can be installed at any angle on the drop ceiling. It is not dependent on running parallel to either the long or the short runner in a drop ceiling, it can run at an angle.

For fire protection purposes there is a fusible link in the clip that mounts on the runner. When the aisle heats up to 135°F, the fusible link releases, and the vinyl along with the aluminum extrusion drops to the floor allowing the suppression system to operate fully.



Retractable System

The Retractable System, exclusively for a 4' or 6' aisle ceiling, is a truly unique and easily deployed solution.

The Retractable System requires a uniform height of rack heights and two uniform rows of racks to work. It will work with virtually any rack manufacturer's products. This is the easiest ceiling solution to deploy. It can be used in conjunction with the RS Universal door or Vertical door types to make it a combined solution.

The Retractable System consists of an aluminum canister that straddles the aisle with a 20' or 30' length of the same vinyl film used in the Vertical System. It pulls out the length of the aisle and is held in place on the edges by a sheet metal guide.

For fire protection purposes, the Retractable System also uses fusible links. The fusible links release at 135°F. When the temperature reaches 135°F, the link is broken and the film safely retracts into the fire resistant aluminum canister. Guides ensure that the film retracts smoothly when the fusible links are separated.

Emerson Network Power, a business of Emerson (NYSE:EMR), delivers software, hardware and services that maximize availability, capacity and efficiency for data centers, healthcare and industrial facilities. A trusted industry leader in smart infrastructure technologies, Emerson Network Power provides innovative data center infrastructure management solutions that bridge the gap between IT and facility management and deliver efficiency and uncompromised availability regardless of capacity demands. Our solutions are supported globally by local Emerson Network Power service technicians. Learn more about Emerson Network Power products and services at www.EmersonNetworkPower.com

Emerson Network Power

Liebert Corporation World Headquarters
1050 Dearborn Drive
P.O. Box 29186
Columbus, Ohio 43229
United States Of America
800 877 9222 Phone (U.S. & Canada Only)
614 888 0246 Phone (Outside U.S.)
614 841 6022 FAX
Contact@EmersonNetworkPower.com

Emerson Network Power Caribbean and Latin America

Office – United States of America
+1-954-984-3452 Phone
Ask.Cala@Emerson.com

Emerson Network Power European Headquarters

Office – Italy
+39 049 9719 111 Phone
+39 049 5841 257 FAX
Marketing.EMEA@EmersonNetworkPower.com

Emerson Network Power Asia Pacific

Office – Phillipines
+63 2 687 6615
+63 2 730 9572 FAX
Marketing.AP@Emerson.com

liebert.com

24 x 7 Tech Support

800 222 5877 Phone
614 841 6755 (outside U.S.)

While every precaution has been taken to ensure accuracy and completeness in this literature, Liebert Corporation assumes no responsibility, and disclaims all liability for damages resulting from use of this information or for any errors or omissions.

© 2013 Liebert Corporation. All rights reserved throughout the world. Specifications subject to change without notice.

All names referred to are trademarks or registered trademarks of their respective owners.
© Liebert is a registered trademark of the Liebert Corporation.

SL-11388 (R04/13) Printed in USA

EmersonNetworkPower.com

Emerson Network Power.

The global leader in enabling Business-Critical Continuity™.

- AC Power
- Connectivity
- DC Power
- Embedded Computing
- Embedded Power
- Industrial Power
- Infrastructure Management & Monitoring
- Outside Plant
- Power Switching & Controls

- Precision Cooling
- Racks & Integrated Cabinets
- Services

Business-Critical Continuity, Emerson Network Power and the Emerson Network Power logo are trademarks and service marks of Emerson Electric Co.
©2013 Emerson Electric Co.

EMERSON. CONSIDER IT SOLVED.™