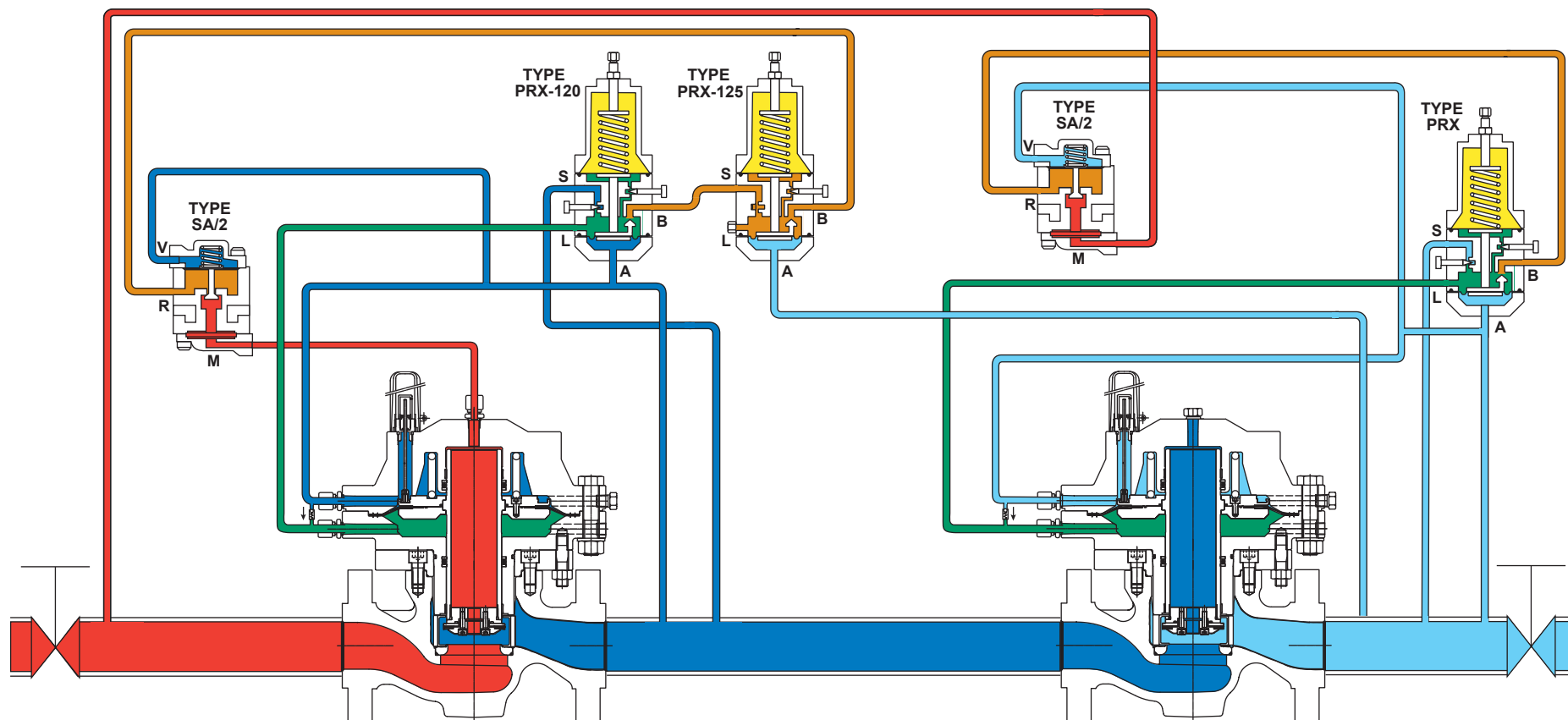


# Type EZH\* Working Monitor



- INLET PRESSURE
- OUTLET PRESSURE
- ATMOSPHERIC PRESSURE
- LOADING PRESSURE
- INTERMEDIATE PRESSURE
- PILOT SUPPLY PRESSURE
- CHECK VALVE

TYPE PRX:  
 S - BLEED PORT  
 B - SUPPLY PORT  
 L - LOADING PORT  
 A - SENSING PORT

TYPE SA/2:  
 V - SENSING PORT  
 R - PILOT SUPPLY PORT  
 M - INLET PORT

\*NOTE: For Europe, Middle East, and Africa markets, the check valve is only applicable for Type EZH with DN 100 / NPS 4 body size.

