



MICRO CD SYSTEM

CD-R/RW COMPATIBLE



OWNER'S MANUAL

ES9

Visit our web site at www.emersonradio.com





BEFORE WE BEGIN

Thank you.....

for purchasing this Emerson Research audio product. The Emerson Research brand is your assurance of quality, performance and value.

Our engineers have included many useful and convenient features in this product. Please be sure to read this Owner's Manual completely to make sure you are getting the maximum benefit from each feature.

This product was manufactured using the highest quality components and standards of workmanship. It was tested by Emerson Research inspectors and found to be in perfect working order before it left our factory. However, there is always the chance that some problem may occur because of rough handling during shipment to the retail store or to the final consumer.

If, after reading this Manual, you experience any problems with the operation of this product, please refer to the instructions for obtaining service at the end of this Manual. Emerson Research and Emerson Research retailers are committed to your satisfaction.

Once again, thanks for purchasing this Emerson Research audio product.



For future reference, record the serial number in the space provided.



Model Number : ES9

Serial Number :





IMPORTANT NOTES

**WARNING: TO PREVENT FIRE OR SHOCK HAZARD,
DO NOT EXPOSE THIS UNIT TO RAIN OR MOISTURE.**



CAUTION
RISK OF ELECTRIC SHOCK
DO NOT OPEN



CAUTION: TO REDUCE THE RISK OF ELECTRIC SHOCK,
DO NOT REMOVE COVER (OR BACK). NO USER
SERVICEABLE PARTS INSIDE. REFER SERVICING TO
QUALIFIED SERVICE PERSONNEL.

DANGEROUS VOLTAGE



Uninsulated Dangerous Voltage, that may be of sufficient magnitude to constitute a risk of electric shock to persons is present within this product's enclosure.

ATTENTION



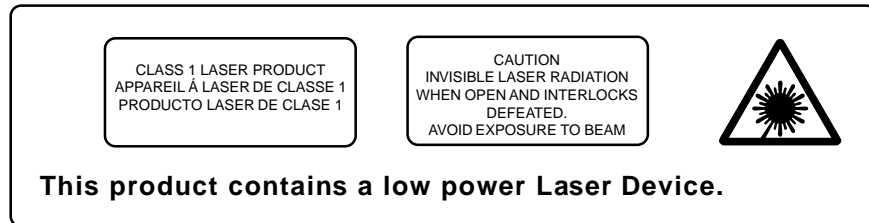
The Owner's Manual contains important operating and maintenance instructions.

For your safety, it is necessary to refer to the manual.

- Avoid installing this unit in places exposed to direct sunlight or close to heat radiating appliances such as electric heaters, on top of other stereo equipment that radiates too much heat, places lacking ventilation or dusty areas, places subject to constant vibration and/or humid or moist areas.
- Do not attempt to clean this unit with chemical solvents as this might damage the finish. Use a clean dry cloth.
- Operate controls and switches as described in the manual.
- Before turning on the power, make certain that the connecting cords, if any, and power cord are properly installed.
- Store your CDs in a cool area to avoid damage from heat.
- When moving the set, be sure to first disconnect the power cord and remove cords connected to other equipment.



CLASS 1 LASER PRODUCT



FCC INFORMATION

This equipment has been tested and found to comply with the limits for a Class B digital device, pursuant to Part 15 of the FCC Rules. These limits are designed to provide reasonable protection against harmful interference in a residential installation. This equipment generates, uses, and can radiate radio frequency energy and, if not installed and used in accordance with the instructions, may cause harmful interference to radio communications. However, there is no guarantee that interference will not occur in a particular installation. If this equipment does cause harmful interference to radio or television reception, which can be determined by turning the equipment off and on, the user is encouraged to try to correct the interference by one or more of the following measures:

- Reorient or relocate the receiving antenna.
- Increase the separation between the equipment and receiver.
- Connect the equipment into an outlet on a circuit different from that to which the receiver is connected.
- Consult the dealer or an experienced radio/TV technician for help.

This device complies with Part 15 of the FCC Rules. Operation is subject to the following two conditions:

- (1) This device may not cause harmful interference, and
- (2) This device must accept any interference received, including interference that may cause undesired operation.



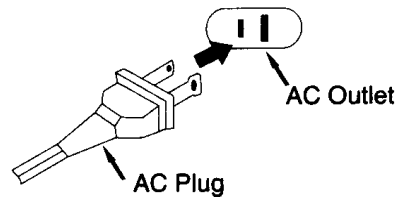
PREPARATION FOR USE

UNPACKING AND SET-UP

- Carefully remove the unit from the carton and remove all packing material from the unit.
- Remove any labels or stickers which may be on the front or top of the set, but do not remove any labels from the back or bottom.
- We suggest that you retain the original carton and packing materials in case it ever becomes necessary to return your unit for service. This is the only sure way to protect the unit from damage in transit.
- If you do dispose of the carton and packing materials, please do so properly. Emerson Research cares about our environment.

POWER SOURCE

This system is designed to operate on 120V 60Hz AC house current . Connecting this system to any other power supply could result in damage to the unit which is not covered by your warranty. You will note that this system is equipped with a polarized AC power plug having one blade wider than the other. This is a safety feature. If this plug does not fit into your existing AC outlet, do not try to defeat this safety feature by filing the wide blade to make it fit into your outlet. If this plug will not fit into your outlet, you probably have an out-dated non-polarized AC outlet. You should have your outlet changed by a qualified licensed electrician.



BATTERY ACTIVATION INFORMATION

There are two 3V lithium batteries pre-installed in your system. One is in the remote control handset and the other is located in a small battery compartment on the inside of the motorized CD door of the main unit. The battery in the CD door provides back-up power for the clock and timer settings, and for the preset station memories.

In order to insure that these batteries are 'fresh' when you purchase your system, we have placed small flexible plastic 'spacers' between the batteries and the battery terminals. These plastic 'spacers' prevent the batteries from making contact with the battery terminals so no battery drain can occur.



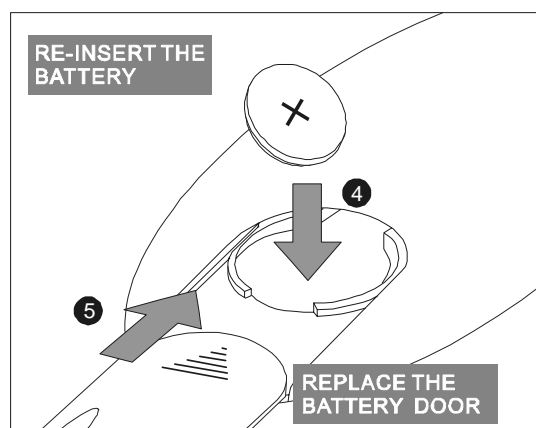
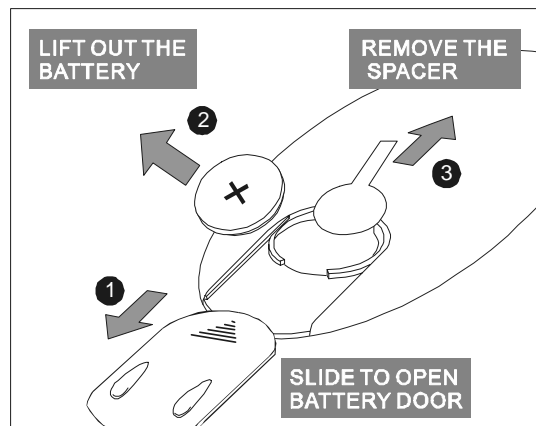
IMPORTANT!

These battery spacers must be removed from the unit before use. If you do not remove the spacer from the remote, the remote will not operate. If you do not remove the spacer from the battery compartment in the CD door, the clock, timer, and preset memories will be lost when the power is disconnected.

To remove the battery spacers and activate the batteries, proceed as follows:

Remote Control:

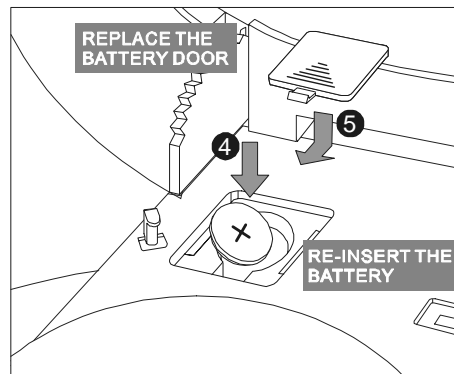
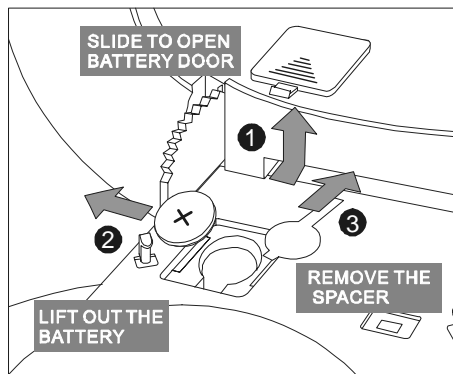
Slide the battery compartment door in the direction of the arrow to open it. Lift out the battery and remove the spacer beneath the battery. Re-insert the battery with the "+" side facing up, and replace the battery compartment door.





Main Unit:

1. Insert the AC plug into the AC outlet. The main display will come 'On'.
2. Press the POWER button on the front panel, or on the remote control. The CD door will illuminate.
3. Touch the OPEN sensor on top of the main unit, or press the OPEN button on the remote control, to open the motorized CD door. The CD door lighting will flash.
4. Carefully open the battery compartment door by sliding it in the direction of the arrow to remove it.
CAUTION: Do not exert too much pressure on the CD door itself.
5. Lift out the battery and remove the plastic spacer beneath it. Re-insert the battery with the "+" side facing up and replace the battery compartment door.



6. Touch the OPEN sensor on top of the main unit, or press the OPEN button on the remote control to close the motorized CD door.
7. Press the POWER button on the front panel, or on the remote control, to shut the system 'Off'. The CD door lighting goes 'Off'.



BATTERY REPLACEMENT INFORMATION

The remote control battery should last for at least one year of normal everyday operation. Replace the battery when remote operation becomes intermittent. The back up battery in the main unit should be replaced every two years. A fresh battery can retain the clock, timer, and preset station memories for up to 20 days without AC power.

The replacement battery information is as follows:

- **Remote Control:**

3 Volt Lithium Battery, Type **CR2032** or equivalent.

- **Main Unit:**

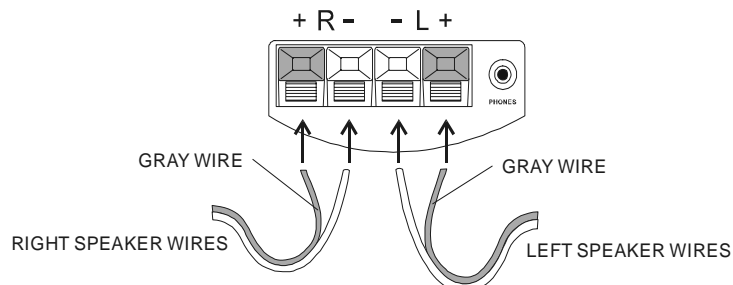
3 Volt Lithium Battery, Type **CR1616** or equivalent.

These are standard replacement batteries, available wherever batteries are sold.

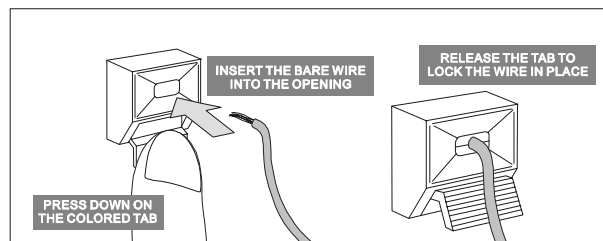
SPEAKER CONNECTION

The speaker cables and the speaker terminals are color coded for your convenience

1. Connect the gray (positive) wire of the left and right speaker to the corresponding gray (positive) terminals on the back of the main unit.
2. Connect the black (negative) wire of the left and right speaker to the corresponding black (negative) terminals on the back of the main unit.



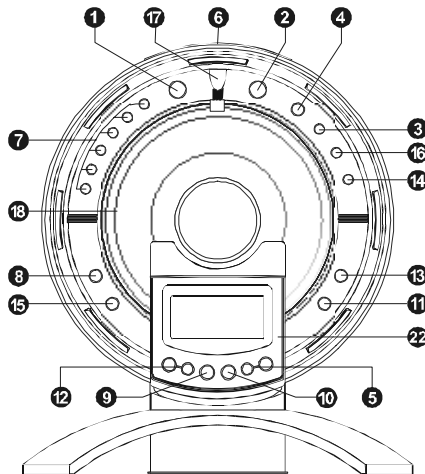
Press down on the colored tab to open the terminal, insert the bare wire into the opening above the tab, and release the tab to lock the wire in place. Be sure not to cross the wires or to insert two wires in the same terminal.



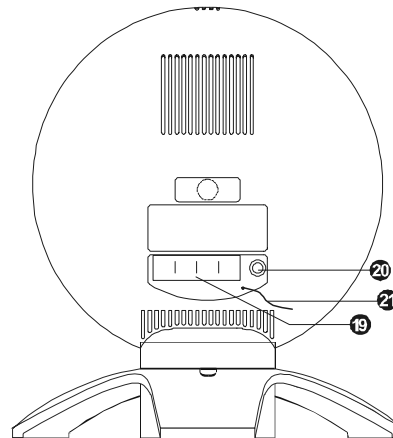


LOCATION OF CONTROLS

FRONT VIEW



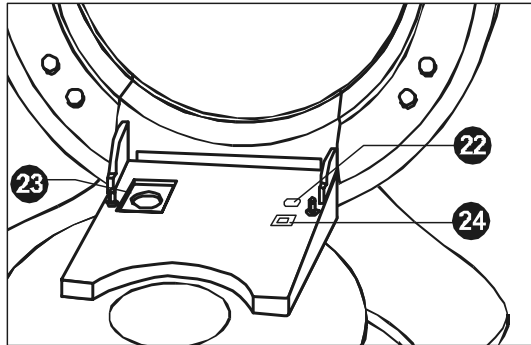
BACK VIEW



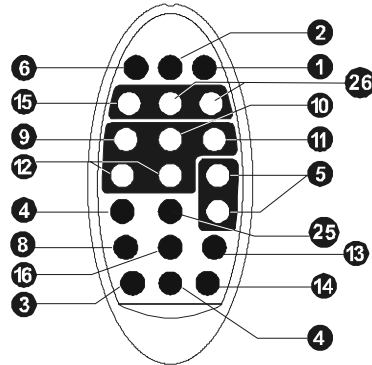
1. **POWER button** – switches the system On and Off.
2. **SLEEP button** – activates and adjusts the sleep to music timer.
3. **ALM ON / OFF button** – activates or deactivates the alarm function.
4. **SNOOZE / EQ button** – activates the snooze function after the alarm sounds and selects the desired EQ setting.
NOTE: The remote control has two separate buttons for these functions, one for snooze (SNZ) and a separate one for EQ.
5. **VOL + / - buttons** – increases or decreases the volume level.
6. **OPEN button** - opens and closes the CD door.
NOTE: The OPEN control on the main unit is a touch sensor control. It is activated by just the touch of your finger. The button itself does not move.
7. **PRESET MEMORY Buttons** – used when storing and recalling stations in the tuner memories.
8. **MEM (Memory) button** – used to access the memory function and to enter a station in the tuner memory.
9. **CD PLAY/PAUSE ►|| button** – Press to begin CD playback and to pause during playback.
10. **STOP ■ button** – Press to stop CD playback. Also used to cancel programmed CD memory sequence.
11. **REPEAT/PROG (REP/PGM on Remote Control)** – Used to select the Programmed and Repeat CD playback modes.



BACK OF LCD DISPLAY



REMOTE CONTROL



12. ◀◀ / ▶▶ buttons:

- **Tuner Mode:** Press to tune up or down and select the desired frequency.
- **CD Mode** – Press to skip tracks or perform high speed music search.

NOTE: The ◀◀ / ▶▶ buttons on the Remote Control cannot be used for radio tuning.

13. **MODE** button – press to enter clock, timer, or calendar setting mode.

14. **DISPLAY (DIS)** button – press to cycle the display through the time, temperature, date, and alarm display modes.

15. **AM/FM** button – press to cycle between the AM and FM radio bands.

16. **COLOR** button – press to select the display backlight color (7 colors are available).

17. **REMOTE SENSOR** – receives the signals from the remote control handset.

18. **CD DOOR.**

19. **SPEAKER TERMINALS** – connect the speaker wires to these terminals.

20. **PHONES JACK** – connect stereo headphones (not included) for private listening.

21. **FM WIRE ANTENNA.**

22. **RESET** button (inside pin hole) – resets the unit to original factory settings in case of a computer lock-up.

23. **BACKUP BATTERY COMPARTMENT** – for clock, timer, and preset station memory backup.

24. **AM FREQUENCY STEP** switch – selects either 10 kHz (for USA) or 9 kHz (for Europe) AM tuner frequency steps.

NOTE: This switch has been set to “10 kHz” at our factory and it should be left in the 10 kHz position.

25. **MUTE** button (Remote Control only) – press to temporarily shut off the speakers. The CD door lighting flashes. Press again to cancel Mute and restore the sound.

26. **CH - / CH +** buttons – scroll through to select the radio preset stations.



OPERATING INSTRUCTIONS

NOTE: You may use either the buttons on the main unit or on the remote control for most operations. If a specific button is only found in one location, the instructions will mention the location of the required button.

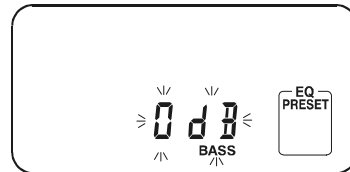
PRESET EQUALIZER (EQ) SETTINGS AND BASS/TREBLE ADJUSTMENTS

This system has an electronic preset equalizer with 5 specific settings:

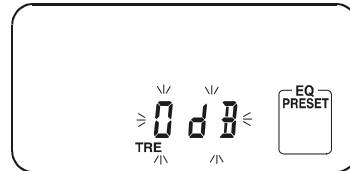
PRESET, JAZZ, ROCK, CLASSIC, and **“HALL”** which simulates the feeling of a concert hall with both ‘direct’ and ‘reflected’ sound. To change from the “Preset” setting which provides 0 db of bass and 0 db of treble to one of the other modes press the EQ button on the remote, or the SNOOZE/EQ button on the main unit until the desired EQ setting appears on the display.

You may also adjust the Bass and Treble levels of the “Preset” setting up or down by + 14 db or –14 db as follows:

1. Press the MODE button 6 times. The display will show the Bass level at “0 db”. Press the VOL + or – buttons to adjust the Bass level up or down between +14 db and –14 db.



2. Press the MODE button once more. The display will show the Treble level at “0 db”. Press the VOL + or – buttons to adjust the Treble level up or down between +14 db and –14 db.



3. Then press the MEM (Memory) button to memorize the new Bass and Treble settings.

NOTES:

- You must make the adjustments while the Bass and Treble levels are flashing in the display (approximately 15 seconds). If no adjustment is made within 15 seconds the Bass and Treble settings return to their previous preset levels.
- Once you adjust the Bass and Treble levels as described above your new settings become the new “Preset” levels until you change them again.
- If the power is disconnected and the back up battery is exhausted the Bass and Treble settings will return to the original factory levels of “0 db”.



PLAYING COMPACT DISCS

NOTE: This system is designed to play normal size 5" (12 cm) compact discs only. Do NOT try to load 3" (8 cm) CD 'singles' in this player.

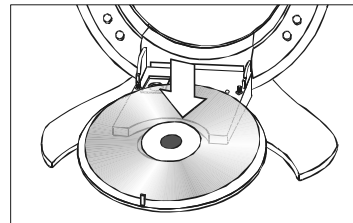
Special CD Operation Features

- **Auto-Start Playback:**
If the system is in the CD mode, CD playback will start automatically as soon as a disc is loaded and the door is closed. If there is a CD in the player and you switch from Tuner (AM/FM) mode to CD mode by pressing the ►|| (Play/Pause) button, CD playback will begin automatically.
- **Auto Power Off (CD Mode Only):**
The main power shuts off automatically 1 minute after a CD stops playing.

Normal Playback

1. Press the POWER button to turn the unit 'On'. The CD door lighting comes 'On'.
2. Press the OPEN button on the remote, or touch the OPEN sensor on top of the main unit. The CD door opens and the door lighting flashes.

3. Place your disc on the CD door with the printed label side facing down. Do not try to place the disc on the CD spindle, place it on the door only.



4. Press the OPEN button on the remote, or touch the OPEN sensor on top of the main unit to close the CD door.

5. If the system was in the CD mode the player will read the disc and begin playback automatically. If the system was in the AM/FM Tuner mode, press the ►|| (Play/Pause) button to begin playback. As the disc plays the display shows the track number and the elapsed playing time of each track.



6. Press the VOLUME + / - (Up/Down) buttons to adjust the volume to the desired level.

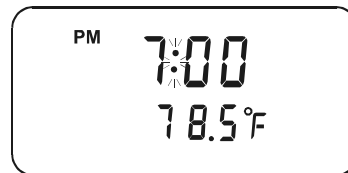


7. Playback will continue until all tracks have been played. The player then stops and the display will show the total number of tracks and playing time on the disc.



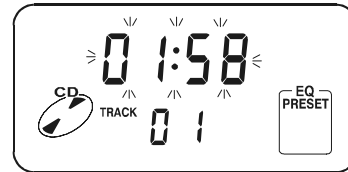
8. Press the OPEN button or touch the OPEN sensor to open the CD door and remove your disc. Press OPEN again to close the CD door and press the POWER button to shut the power 'Off'. The CD door lighting goes 'Off'.

NOTE: If the disc is not removed, or another function selected, within 1 minute the system power shuts off automatically and the display changes from CD function to clock function. If this occurs you will need to press the POWER button again to turn the unit 'On' and press the OPEN button to remove your disc.



Pause Control

To pause momentarily during playback press the ►|| (Play/Pause) again. The sound stops and the elapsed time display flashes, but the disc continues to spin. Press the ►|| (Play/Pause)



button once more to cancel pause and resume playback. The elapsed time display stops flashing and playback resumes at the same point

To Begin Playback From A Specific Track

As soon as you load your disc and close the CD door, press either the ►► or the ◀◀ buttons until the desired track number appears in the display. Playback will begin on the desired track and continue until the end of the disc.

To Skip Tracks During Playback

Press the ►► button once during playback to skip forward to the next track. Press the ►► button repeatedly to skip forward to higher numbered tracks. Release the button when the desired track number appears in the display and playback will begin on that track.





Press the **⏮** button once during playback to skip backward to the beginning of the current track. Press the **⏮** button repeatedly to skip backward to lower numbered tracks. Release the button when the desired track number appears in the display and playback will begin on that track.

High Speed Music Search

During playback press and hold the **⏭** or **⏮** buttons to move forward or backward through a track at high speed to locate or repeat a specific musical passage. Release the buttons when you reach the desired point and normal playback will resume at that point.

NOTE: The playback volume is automatically reduced to a low level during high speed music search.

Random Playback

When Random Playback feature is activated the tracks on the disc are played back in random order.

NOTE: Random Playback can only be selected while the CD player is stopped.

- If the disc is playing press the STOP **■** button to stop playback.

- Press the REPEAT/PROG button on the main unit, or the REP/PGM button on the remote control, one time. The RND (Random) indicator appears in the display.



- Press the **▶||** (Play/Pause) button to begin Random Playback. All tracks will be played in random order, then the player stops and the display shows the total tracks and playing time on the disc. (After 1 minute the power shuts off automatically.)
- To cancel Random Playback before all tracks have played, press the STOP **■** button.



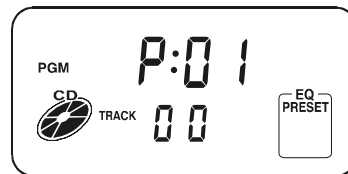
Programmed Playback

This feature allows you to program any disc to play only the tracks you want to hear in the order you want to hear them. Up to a total of 21 tracks can be programmed.

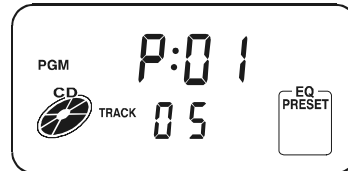
NOTE: A disc can only be programmed while the CD player is stopped.

1. If the disc is playing press the STOP ■ button to stop playback.

2. Press the REPEAT/PROG button on the main unit, or the REP/PGM button on the remote control, two times. The PGM (Program) indicator appears in the display together with Program Memory number "P:01" and Track Number "00".



3. Press the ◀◀ or ▶▶ buttons to select the first track to be programmed.
Example: Track number 5.



4. When the desired track number appears in the display press the REPEAT/PROG or REP/PGM buttons again to enter that track in Program Memory P:01. The track display returns to "00" and the Program Number display advances to "P:02"



5. Repeat steps 3 and 4 until you have entered up to 21 tracks in the program memory. **NOTE:** The same track number can be programmed more than once if desired.

6. Press ▶|| (Play/Pause) button. The PGM indicator remains in the display. The selected tracks will be played in the programmed order. After the last programmed track has been played the player stops, the PGM indicator disappears, and the display shows the total tracks and playing time of the disc. After 1 minute the power shuts off automatically.



To cancel programmed playback at any time, press the STOP ■ button.



NOTES:

- A. If you press the **⏮** or **⏭** buttons during programmed playback, the player will skip forward or backward to the next track in the program, not necessarily the next track on the disc.
- B. During CD programming if you pause for more than 1 minute without entering a track number in the memory, or before pressing the **▶||** button to begin programmed playback, the system will shut off automatically.

Repeat Playback

This feature allows you to continuously repeat a single track, an entire disc, a programmed sequence of tracks, or to repeat all of the tracks on the disc in random order.

NOTE: The disc must be playing in order to activate any of the Repeat Playback modes.

• **Repeat 1 Track:**

Press **▶||** (Play/Pause) button to start playback. Press **⏮** or **⏭** buttons to select the track to be repeated. When playback begins on that track press the REPEAT/PROG or REP/PGM button once. The “ 1 ” indicator appears in the display. The selected track will be repeated continuously.



• **Repeat All Tracks:**

Press **▶||** (Play/Pause) button to begin playback. When playback begins press the REPEAT/PROG or REP/PGM buttons twice. The “ ALL ” indicator appears in the display and the entire disc will be repeated continuously.



• **Random Repeat:**

Follow the instructions for Random Playback on page 13. When Random Playback begins press the REPEAT/PROG or REP/PGM buttons twice. The RND and “ ALL ” indicators appear in the display. Random Playback will continue indefinitely.





- **Program Repeat:**

Follow the instructions for Programmed Playback on page 14. When Programmed Playback begins press the REPEAT/PROG or REP/PGM buttons twice. The PGM and “ALL” indicators appear in the display and the sequence which you programmed will be repeated indefinitely.



To cancel all Repeat modes at any time simply press the STOP ■ button.

LISTENING TO THE RADIO

1. Press the POWER button to turn the system ‘On’.
2. Press the AM/FM button to select the Tuner mode if necessary, and press AM/FM button again to select the desired band.



NOTE: When the AM band is selected the “MW” (Medium Wave) indicator appears in the display.



3. Press the TUN (Tuning) ◀◀ or ▶▶ buttons on the front panel only to tune to the desired station. **The ◀◀ and ▶▶ buttons on the remote control cannot be used for radio tuning.**

- **Automatic Tuning:**

Press and hold the TUN ◀◀ or ▶▶ buttons until the display starts to scan, and then release the buttons. The Tuner will stop on the first strong station it finds Repeat this procedure until the desired frequency appears in the display.

- **Manual Tuning:**

Repeatedly press the TUN ◀◀ or ▶▶ buttons to manually move the display up or down until you reach the frequency of the desired station.



NOTES:

- A. Use manual tuning to select weaker stations that might be bypassed during automatic tuning.
- B. If the automatic tuning does not stop on the exact frequency of the station, for example it stops on 103.55 instead of 103.5, use the manual tuning method to 'fine tune' to the exact frequency of the desired station.

4. Adjust the Volume control as desired. The volume level indicator appears on the display for a few seconds while the volume is being adjusted. The volume level indicator goes from "00" (minimum) to "15" (maximum).



5. Adjust the Preset Equalizer (EQ) and the Bass and Treble levels as desired.
6. When you are finished listening press the POWER button to turn the system 'Off'.

Antenna Information

FM

Be sure the FM wire antenna is extended to its full length.

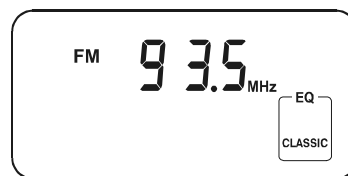
AM

The AM bar antenna is inside the cabinet of the main unit. If AM reception is weak you may have to reposition the main unit until you find the position that provides the best AM reception.

Storing Stations In The Tuner Memory

This system allows you to store up to 20 stations (10 AM / 10 FM) in the tuner preset memories for easy recall at any time.

1. Turn the system 'On' and press the AM/FM button to select the Tuner mode and the desired band.
2. Tune to the first station you wish to memorize.

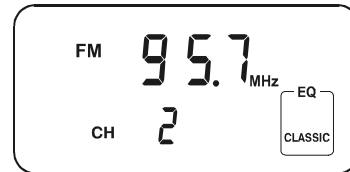




3. Press the MEM (Memory) button and then press preset button "1" on the front panel of the main unit. "CH 1" appears in the display confirming that the selected station is now stored in preset memory number 1.



4. Tune to the next station to be stored, press the MEM button and then press preset button "2".



5. Repeat step 4 using a different preset button each time. To store stations in preset numbers 6 through 10, press the MEM button, then the "+ 5" button, and then one of the preset number buttons. For example, to store a station in preset memory number 6, press MEM, "+ 5", and "1" buttons in sequence.
6. After storing up to 10 stations in one band press the AM/FM button to switch bands and repeat the above procedure to store up to 10 additional stations on the second band.

Recalling Preset Stations

Press AM/FM button to select Tuner mode and the desired band. Press the desired preset number button on the front panel to recall the desired station. To recall stations in preset numbers 6 through 10, press the "+ 5" button before pressing the preset number button.

You may also scroll through the preset station memories by pressing the "CH -" or "CH +" buttons on the remote control.

Changing Preset Stations

To change a preset station simply tune to the new station which you wish to memorize and store it in the preset memory location that you wish to change. The new station will be memorized and the previously stored station will be deleted.



Setting The Clock

IMPORTANT INFORMATION !!

The clock in this system has both 12 hour time display format (USA) and 24 hour time display format (Europe). For example, in the 24 hour format “6:00 PM” will be displayed as “18:00”. When you connect this system to your AC outlet for the first time the clock display will show “12:00”. This is 12:00 AM (midnight) in the 12 hour USA format. Use only the ►► forward setting button to set the display to the correct hour. When you advance the display 12 hours the “PM” indicator will appear. If you continue advancing the display until it passes “12:00” AM (midnight) again, it will switch to the 24 hour display format. If you notice that the clock is displaying time in the 24 hour format, simply move the clock forward ►► or backward ◄◄ by 24 hours to change back to the 12 hour time display format.

1. When the system is connected to AC for the first time the clock display will show “12:00” (AM) in the 12 hour display format.

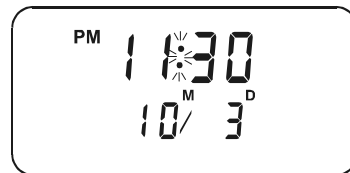
2. Press the MODE button 3 times. The time display will begin to flash.



3. Press the ►► button to advance the display from “12:00” (AM) to the correct hour. When you pass 12:00 ‘noon’ the “PM” indicator will appear. If you accidentally pass the correct hour, press the ◄◄ button to back up until the correct hour appears on the display. Remember, in the 12 hour time display format if the PM indicator does not appear the time displayed is “AM”.

4. Press the VOL + or VOL – buttons to adjust the display to the correct minute.

After setting the clock correctly press the MEM button to return to the normal Time/Date display. The colon will flash once per second to indicate that the clock is running. If you do not press the MEM button within 15 seconds the normal Time/Date display returns automatically and the clock begins to run.





Setting The Year, Selecting (°F) or (°C) Temperature Display

1. Press the MODE button 4 times. The year and indoor temperature displays will begin to flash.

2. If necessary, press the ◀◀ or ▶▶ buttons to correct the year display. The year display range is from 2001 to 2099.



3. Press the “VOL +” or “VOL –” buttons to switch the indoor temperature display between Fahrenheit (°F) and Centigrade (°C) display.

4. After correcting the year, press the MEM button to return to the normal Time/Date display, or just wait 15 seconds and the display returns to Time/Date automatically.

Setting The Month And Date

1. Press the MODE button 5 times. The Month and Date display begins to flash.



2. Press the ◀◀ or ▶▶ buttons to adjust the month, then press the “VOL +” or “VOL –” buttons to adjust the date.

3. Press the MEM button to return to the normal Time/Date display, or just wait 15 seconds and the display returns to Time/Date automatically.

NOTE:

During all of the above clock and calendar display adjustments, if you do not press the ◀◀, ▶▶, “VOL +”, or “VOL –” buttons within 15 seconds after pressing the MODE button the display will return to the previous Time/Date settings automatically.



Setting The Alarm Time And Alarm Source (Radio/Buzzer/CD)

The timer in this system can be set to wake you to the Radio, a Buzzer alarm, or the CD player. In addition, if you choose to 'Wake to CD', you can select the specific track to be played at the wake up time. If you choose 'Wake to Radio' you can select the specific band, preset station that you will hear at the wake up time.

NOTE: The Alarm Time can be adjusted with the system power 'On' or 'Off'.

1. Press the MODE button once. The display will flash "AL TIME" and "12:00" (AM)



2. Press the ◀◀ or ▶▶ buttons to set the desired wake-up hour. Be sure to observe the PM indicator to set the Hour correctly. If the PM indicator appears the time displayed is "PM". If the PM indicator does not appear the time displayed is "AM".

3. Press the "VOL +" or "VOL -" buttons to set the desired wake up minute.

4. Press the MODE button once more. The Alarm Source Selector appears on the display. Press "VOL +" or "VOL -" buttons to select the desired alarm source, BUZZER, RADIO, or CD.



5. Press ALM ON/OFF button to turn 'On' alarm.



6. Press the MEM button to return to the current Time/Temperature, Tuner, or CD display.

To Set Or Cancel The Wake Up Alarm

1. Press the MODE button once. The previously set wake up time will flash. Adjust the alarm time as described above if necessary.



2. Press the MODE button again. The previously selected alarm source will flash. Select the desired source if necessary.



3. Press the ALM ON/OFF button on the main unit or the AL ON/OFF button on the remote to set or cancel the alarm. If the display shows "ON", the alarm is set. If the display shows "OFF" the alarm is canceled.

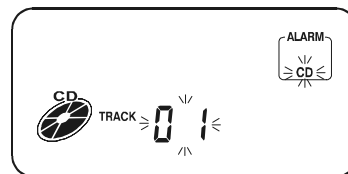
- If you selected "BUZZER" as the alarm source, the "ON" indicator appears and "BUZZER" indicator flashes in the display.



- If you selected "RADIO" as the alarm source, the display will show the radio frequency and the preset station number will flash. Press the AM/FM button to select the desired band if necessary, and then press the ◀◀ or ▶▶ buttons to select the preset station that you wish to hear at the wake up time.



- If you selected "CD" as the alarm source, the track number will flash. Press the ◀◀ or ▶▶ buttons to select the track number you want to hear at the wake up time.



NOTE: Don't forget to load the desired CD in the player before you go to sleep.

4. After setting the alarm time and alarm source as desired press the MEM button to return to the Time/Temperature, Tuner, or CD display. The alarm indicator and the alarm source you selected will appear in the upper right corner of the display. If the ALARM indicator and alarm source do NOT appear, press the MODE button twice and then the ALM ON/OFF button to activate the alarm.





Waking To Buzzer / Auto Snooze Feature

- At the desired wake up time the Buzzer alarm will sound. It begins softly and gradually becomes louder.
- It will continue for one minute and then goes into the Auto Snooze mode. It stops for 9 minutes and then comes on again.
- Auto Snooze operation will be repeated 3 times. After the **fourth** time the alarm shuts off until the next day.
- You may also activate the Snooze function manually after the alarm sounds by pressing the SNOOZE/EQ button on the front panel or the SNZ button on the remote control. The buzzer stops for 9 minutes and then comes on again.
- After the buzzer sounds you may also press the AL ON/OFF button to stop it immediately. It will reset itself for the following day.



Waking To Radio



- At the desired wake up time the radio turns 'On'. It starts softly and gradually becomes louder.
- It will play for 15 minutes and then shuts off and resets itself for the following day.
- Within one minute after the radio turns 'On', you may also press the SNOOZE/EQ button on the main unit or the SNZ button on the remote to activate the Snooze function. The radio stops for 9 minutes and then turns 'On' again. This Manual Snooze operation may be repeated a total of 3 times. Each time the radio shuts 'Off' for 9 minutes and then turns 'On' again for 15 minutes.
- After the 3rd snooze cycle the radio shuts 'Off' and resets itself for the following day.
- After the radio turns 'On', you may also press the AL ON/OFF button to stop the radio alarm and reset it for the following day.





Waking To CD

REMEMBER TO LOAD THE CD IN THE PLAYER AND SELECT THE DESIRED TRACK BEFORE GOING TO SLEEP!

- At the desired wake up time the CD turns 'On'. It starts softly and gradually becomes louder.
- The CD will play for 15 minutes and then shut off and reset itself for the following day.
- Within one minute after the CD turns 'On', you may also press the SNOOZE/EQ button on the main unit or the SNZ button on the remote control to activate the Snooze function. The CD stops for 9 minutes and then turns 'On' again, and plays for 15 minutes. CD/Snooze operation may be repeated 3 times. After the 3rd CD/Snooze cycle the system shuts 'Off' and resets itself for the following day.

NOTE:

You must press SNOOZE/EQ button or SNZ button on remote control within one minute after alarm starts or the Snooze function will not operate.



Sleep To Music Timer

You can use the Sleep Timer to shut the system off automatically while you fall asleep to the radio or the CD player.

1. Turn the unit 'On' and tune to the desired radio station or load the desired CD in the player.
2. Press the SLEEP button 1, 2, 3, or 4 times to select 15, 30, 45 or 60 minutes of Sleep Timer operation. The sleep time appears on the display for 5 seconds. The system continues to play for the amount of time you selected and then shuts 'Off' automatically.
3. To shut the system 'Off' sooner press the POWER button at any time.

NOTE:

If you choose to 'Sleep to CD' function the system will only continue until the end of the disc and then shuts 'Off' automatically. If you select 60 minutes of sleep time, but your disc is only 35 minutes long, the system will shut off approximately one minute after the disc ends.



Adjusting The Display Color

This system features an illuminated 7 color display. You may select the one color that you prefer and have that one color always appear, or you may have the 7 colors continuously changing. You may switch the lighting 'Off' or dim it to a lower level.

The lighting system has been preprogrammed at our factory to change depending on the time of day and the function that is being used. The factory color presets are as follows:

Power Off Mode

<u>Time</u>	<u>Color #</u>
6:00 AM to 11:59 AM	4
12:00 noon to 06:59 PM	5
7:00 PM to 05:59 AM	1

Power On Mode

<u>Function</u>	<u>Color #</u>
CD	2
FM Radio	7
AM Radio	6

To change the display color and reduce the display brightness press the COLOR button. Each time you press COLOR the display color will change and the color number will appear in the following sequence:

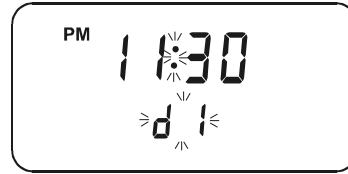
C1 (blue) -> C2 (purple) -> C3 (red) -> C4 (amber) -> C5 (pink) -> C6 (lavender) -> C7 (green) -> d1 (demo fast) -> d2 (demo slow) -> OFF (display lighting 'Off').

When the desired color appears on the display, you may press the DISPLAY button to select either the "DIM" or normal lighting level, then press the MEM button to memorize the new setting.

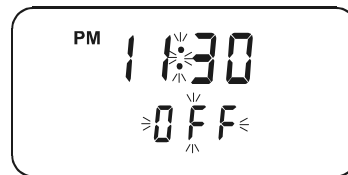




To activate the Demo mode and have the display color change continuously press the COLOR button to select either “d1” (demo fast) or “d2” (demo slow) modes, and then press the MEM button. The display will cycle through all 7 colors continuously until you change the color setting again.

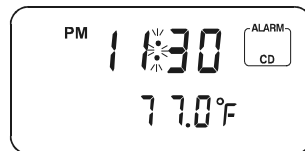
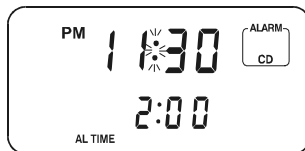
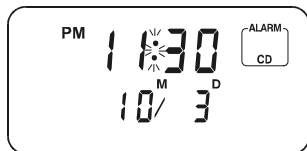


To shut off the display lighting completely press the COLOR button to select “OFF” and then press the MEM button.



Display Button

The normal display mode shows the Time and Month/Date while the power is ‘Off’. Press the DISPLAY button (or DIS button on remote control) to change the Month/Date display to Alarm Time, or to Temperature.



When the power is ‘On’ and you wish to see the time, press the DISPLAY button (or DIS button on remote control) to change the display from Tuner or CD to Time display. The time will appear for 15 seconds and then the display changes back to Tuner or CD automatically.



CARE AND MAINTENANCE

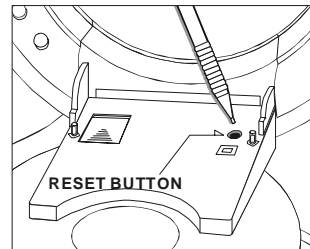
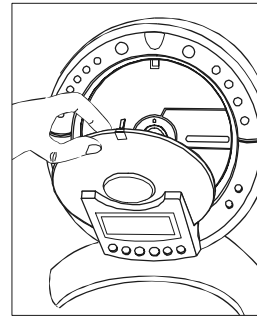
Reset Button

If the system is subject to a severe power surge or electric shock it is possible that the internal computer may 'lock up' and the system will not respond to any commands from the remote control or the front panel controls. If this occurs there are two ways to correct the situation:

1. Disconnect the AC power cord for 30 seconds and then reconnect. Check to see that the system is operating normally.

2. If the system still does not operate normally:

- Disconnect the AC power cord.
- **VERY SLOWLY AND CAREFULLY PULL DOWN ON THE CD DOOR TO OPEN IT MANUALLY.**
- Reconnect the AC power cord, press the POWER button to turn the system 'On'.
- Using a straightened paper clip, toothpick, or similar object press the RESET button located inside the pinhole on the inside of the CD door.
NOTE: After reset, power goes 'Off'.
- Press the POWER button to turn system 'On'.
- Press the OPEN button to close the CD door. Reconfirm that all functions are operating normally.

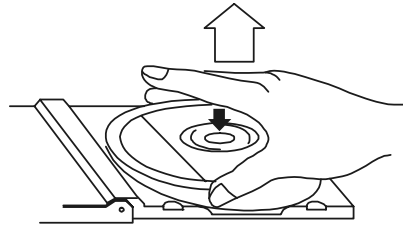
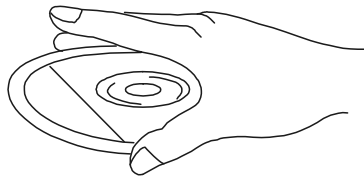


NOTE:

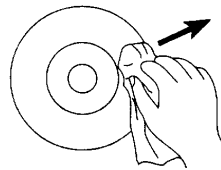
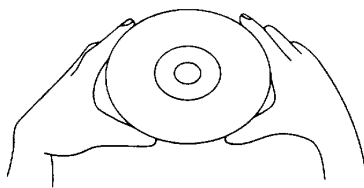
When you press the RESET button to clear the system memory all of your previous settings will be cleared. After reconnecting the AC power cord it will be necessary to reset the Time, Alarm settings, Preset Station Memories, Display Color selections, etc, etc.



COMPACT DISC CARE



- To remove a disc from its storage case, press down on the center of the case and lift the disc out, holding it carefully by the edges.
- Treat the disc carefully. Handle the disc only by its edges. Never allow your fingers to come in contact with the shiny, unprinted side of the disc.
- Do not attach any tape, stickers, etc. to the disc label.
- Clean the disc periodically with a soft, lint-free, dry cloth. Never use detergents or abrasive cleaners to clean the disc. If necessary, use a CD cleaning kit.
- If a disc skips or gets stuck on a section of the disc, it is probably dirty or damaged (scratched).
- When cleaning the disc, wipe in straight lines from the center of the disc to the outer edge of the disc. Never wipe in circular motions.





CLEANING THE UNIT

- To prevent fire or shock hazard, disconnect your unit from the AC power source when cleaning.
- If the cabinet becomes dusty wipe it with a soft dry dust cloth. Do not use any wax or polish sprays on the cabinet.
- If the cabinet becomes dirty or smudged with fingerprints it may be cleaned with a soft cloth slightly dampened with a mild soap and water solution. Never use abrasive cloths or polishes as these will mar the finish of your unit.

CAUTION:

Never allow any water or other liquids to get inside the unit while cleaning.

 Emerson SERVICE	TO FIND THE LOCATION AND PHONE NUMBER OF YOUR NEAREST SERVICE CENTER PERMITTED TO PERFORM WARRANTY...
CALL TOLL FREE: 1-800-695-0098	
FOR ADDITIONAL SET-UP OR OPERATING ASSISTANCE PLEASE CALL: 1-800-898-9020	
FOR CUSTOMER SERVICE, PLEASE WRITE TO: Emerson Radio Corp. Consumer Affairs Dept. 1901 Diplomat Drive, Farmers Branch, TX 75234.	



TROUBLESHOOTING GUIDE

Should this unit exhibit a problem, check the following before seeking service.

Symptom	Possible Cause	Solution
Radio		
Noise or sound distorted on AM or FM broadcasts.	Station not tuned properly for AM or FM.	Retune the AM or FM broadcast station.
	FM: Wire antenna is not extended.	Extend FM wire antenna.
	AM: The bar antenna is not positioned correctly.	Reposition the unit until best reception is obtained.
AM or FM, no sound.	AM or FM mode is not selected.	Press AM/FM button to select AM or FM.
	Volume at minimum.	Increase Volume.
Compact Disc Player		
CD Player will not play.	CD mode is not selected.	Press ► (Play/Pause) button to select CD.
	CD is not installed or installed incorrectly.	Insert CD with label side out.
CD skips while playing.	Disc is dirty or scratched.	Wipe disc with cloth or use another disc.



**EMERSON RADIO CORP.
LIMITED WARRANTY**

What does this warranty cover ? Any manufacturing defects in original material, including original parts and workmanship, under normal use and conditions.

For how long? For a period of ninety (90) days from the date of original purchase in the U.S.

What will we do ? If you need service under this Warranty, and you provide us with the dated proof of purchase, we will provide repair service at no charge for labor and parts at an authorized Depot Repair Facility, or replace the product in our discretion.

How do you make your warranty claim ? If it becomes necessary to repair your unit, you can obtain the name and mailing location of a Depot Repair Facility by dialing **1-800-695-0098**. You should pack your unit in a well-padded heavy corrugated box, enclose your check or money order payable to the Depot Repair Facility in the amount of **\$9.00** to cover the return shipping and handling costs, and enclose a copy of your proof of purchase (warranty service will not be provided without a dated proof of purchase). Finally, you should ship the unit prepaid via UPS or parcel post (insured).

What does your warranty not cover ? Your warranty does not cover the following :

- Damage from negligence, misuse, abuse, accident, or failure to follow operating instructions.
- Use of product in a commercial application or rentals.
- Changes or repairs by anyone other than an authorized Depot Repair Facility.
- Damage because your unit is improperly connected to the equipment of other manufacturers.
- Unit on which the serial number has been defaced, modified or removed.
- Damage to equipment not properly connected to the product.
- Cost incurred in shipping your unit to and from an authorized Depot Repair Facility.
- Ordinary adjustments which you can perform as outlined in the owner's manual.
- Signal reception problems caused by external antenna or cable systems.
- Products purchased, used, serviced, or damaged outside of the United States.
- Damage to compact discs or cassettes.

What other limitations apply to your warranty ?

THIS WARRANTY IS NON-TRANSFERABLE AND APPLIES ONLY TO THE ORIGINAL PURCHASER AND DOES NOT EXTEND TO SUBSEQUENT OWNERS OF THE PRODUCT. THIS WARRANTY IS VALID ONLY IN THE UNITED STATES OF AMERICA. ANY APPLICABLE IMPLIED WARRANTIES, INCLUDING THE WARRANTY OF MERCHANTABILITY, ARE LIMITED IN DURATION TO A PERIOD OF THE EXPRESSED WARRANTY AS PROVIDED ABOVE BEGINNING WITH THE DATE OF ORIGINAL PURCHASE AT RETAIL AND NO WARRANTIES, WHETHER EXPRESSED OR IMPLIED, SHALL APPLY TO THE PRODUCT THEREAFTER. WE MAKE NO WARRANTY AS TO THE FITNESS OF THE PRODUCT FOR ANY PARTICULAR PURPOSE OR USE.

THE EXTENT OF OUR LIABILITY UNDER THIS LIMITED WARRANTY IS THE REPAIR OR REPLACEMENT PROVIDED ABOVE AND IN NO EVENT WILL OUR LIABILITY EXCEED THE PURCHASE PRICE PAID BY THE PURCHASER OF THE PRODUCT. UNDER NO CIRCUMSTANCES WILL WE BE LIABLE FOR ANY LOSS, DIRECT, INDIRECT, INCIDENTAL, SPECIAL, OR CONSEQUENTIAL DAMAGE ARISING OUT OF OR IN CONNECTION WITH THE USE OF THIS PRODUCT.

How does state law apply to your warranty ?

THIS WARRANTY GIVES YOU SPECIFIC LEGAL RIGHTS, BUT YOU MAY ALSO HAVE OTHER RIGHTS WHICH VARY FROM STATE TO STATE. SOME STATES DO NOT ALLOW LIMITATIONS ON IMPLIED WARRANTIES OR EXCLUSION OR LIMITATION OF INCIDENTAL OR CONSEQUENTIAL DAMAGE, SO THESE RESTRICTIONS MAY NOT APPLY TO YOU.

AU898F





 **emerson**
Research™



EMERSON
Part No.: 16-2836
110-01

Printed in China

