

EnGenius®



EUB1200AC Dual Band Wireless AC1200 USB Adapter User Manual

V1.0.0

TABLE OF CONTENTS

Introduction

Introduction	1-1
Features	1-1
Package contents	1-1
USB Adapter Description	1-1
System Requirements	1-2
Applications	1-2
Network Configuration	1-2
Ad-hoc (peer-to-peer) Mode	1-2
Infrastructure Mode	1-2
WPS Setup	1-3

Windows

USB Adapter	2-1
Before you Begin	2-1
Installing and Uninstalling the Driver	2-1
Installing the Driver	2-1
Uninstalling the Driver	2-3
Wireless LAN Utility	2-4
General	2-4
Profile	2-5
Wireless Network Properties Dialog.	2-5
Adding a Profile.	2-6
Editing a Profile	2-8
Available Network	2-10
Status	2-11
Wi-Fi Protected Setup	2-12

MAC OS X

USB Adapter	3-1
Installing and Uninstalling the Driver	3-1
Installing the Driver	3-1
Uninstalling the Driver	3-3
Wireless LAN Utility	3-4
Link Status	3-4
Profile	3-4
Wireless Network Properties Dialog.	3-5
Adding a Profile	3-6
Editing a Profile	3-8
Available Network	3-9
Advanced Settings.	3-10
Wi-Fi Protected Setup	3-11
Information	3-12

Appendix A

Federal Communication Commission Interference Statement	A-1
Radiation Exposure Statement	A-2

Appendix B

Industry Canada Statement	B-1
Radiation Exposure Statement	B-2

Appendix C

Europe – EU Declaration of Conformity	C-1
---------------------------------------	-----

Appendix D

WorldWide Technical Support	D-1
-----------------------------	-----

Introduction

Chapter 1

1.1 Introduction

The EnGenius EUB1200AC delivers the next generation of 802.11ac wireless technology and makes your wireless connectivity faster and wider to meet the growing demand for streaming high-bandwidth video and other multimedia applications.

It supports the 2T2R MIMO architecture with fully forward compatibility with IEEE802.11n. With up to 300 or 867 Mbps speed and dual band technology, the EUB1200AC can avoid Wi-Fi signal interference and ensure top Wi-Fi speeds and reliable connections. The incredible speed of the EUB1200AC USB adapter makes heavy traffic networking activities more flexible and takes the wireless into practical road.

Features

- Up to 300 or 867 Mbps Wireless Speed
- Backward compatible with IEEE 802.11a/b/g/n
- Dual-Frequency Band (2.4GHz/5GHz)
- High Speed USB 3.0 Interface
- WPS Button for Wireless Easy Setup
- Support WEP/WPA and WPA2 Security Encryption

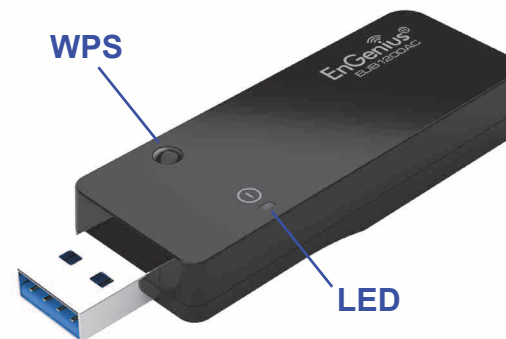
Package contents

Open the package carefully, and make sure that none of the items listed below are missing. Do not discard the packing materials, in case of return; the unit must be shipped in its original package.

- 1x EUB1200AC
- 1x Quick Start Guide
- 1x CD Manual/Utility

USB Adapter Description

The LED shows the Power and Link (traffic) status. The WPS button is located on the opposite side of the LED.



System Requirements

The following are the minimum system requirements in order to use the USB adapter.

- PC/AT compatible computer with a USB interface.
- Windows 2000/XP/Vista or MAC OS operating system.
- 30 MB of free disk space for installing the USB adapter driver and utility program.

Applications

EnGenius wireless LAN products are easy to install and easy to use. The following list describes some of the many applications made possible through the EnGenius wireless LAN products:

- Difficult-to-wire environments
- Temporary workgroups
- Accessing real-time information
- Frequently changing environments
- Small Office and Home Office (SOHO) networks
- Wireless extensions to Ethernet networks
- Wired LAN backup
- Training and Educational facilities

Network Configuration

To better understand how the wireless LAN products work together to create a wireless network, it might be helpful to depict some of the possible wireless LAN PC card network configurations.

EnGenius wireless LAN products can be configured as:

- Ad-hoc (or peer-to-peer) for departmental or SOHO LANs.
- Infrastructure for enterprise LANs.


Ad-hoc (peer-to-peer) Mode

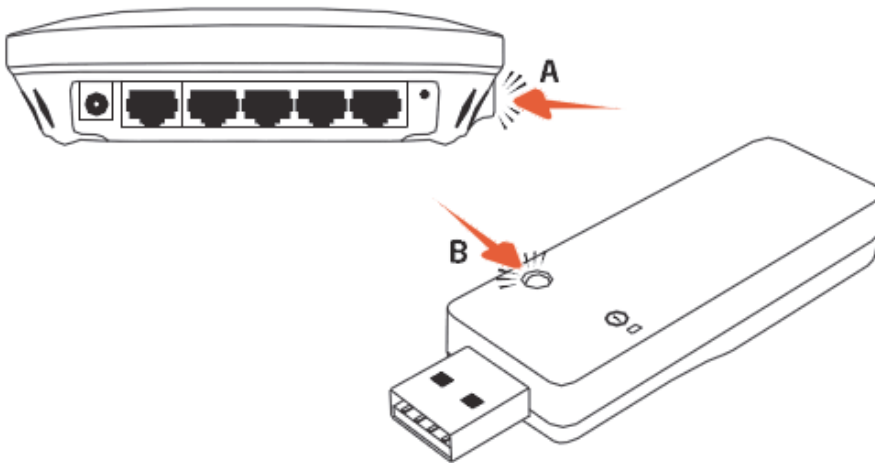
This is the simplest network configuration with several computers equipped with the PC Cards that form a wireless network whenever they are within range of one another. In ad-hoc mode, each client is peer-to-peer, would only have access to the resources of the other client and does not require an access point. This is the easiest and least expensive way for the SOHO to set up a wireless network. The image below depicts a network in ad-hoc mode.

Infrastructure Mode

The infrastructure mode requires the use of an Access Point (AP). In this mode, all wireless communication between two computers has to be via the AP. It doesn't matter if the AP is stand-alone or wired to an Ethernet network. If used in stand-alone, the AP can extend the range of independent wireless LANs by acting as a repeater, which effectively doubles the distance between wireless stations.

1.2 WPS Setup

1. Press and hold down the  WPS button on your router (check with the User Manual that came with your router for any further instructions if necessary).
2. Within 2 minutes, press and hold down the WPS button on the EUB1200AC for 2 seconds. The LED should start to blink.
3. Wait for 2 minutes.
4. Confirm that the connection was successful by opening a web browser or checking the wireless signal indicator icon.



Windows

Chapter 2

2.1 USB Adapter

2.1.1 Before you Begin

During the installation, XP may need to copy systems files from its installation CD. Therefore, you may need a copy of the Windows installation CD at hand before installing the drivers. On many systems, instead of a CD, the necessary installation files are archived on the hard disk in C:\WINDOWS\OPTIONS\CABS directory.

2.1.1 Installing and Uninstalling the Driver

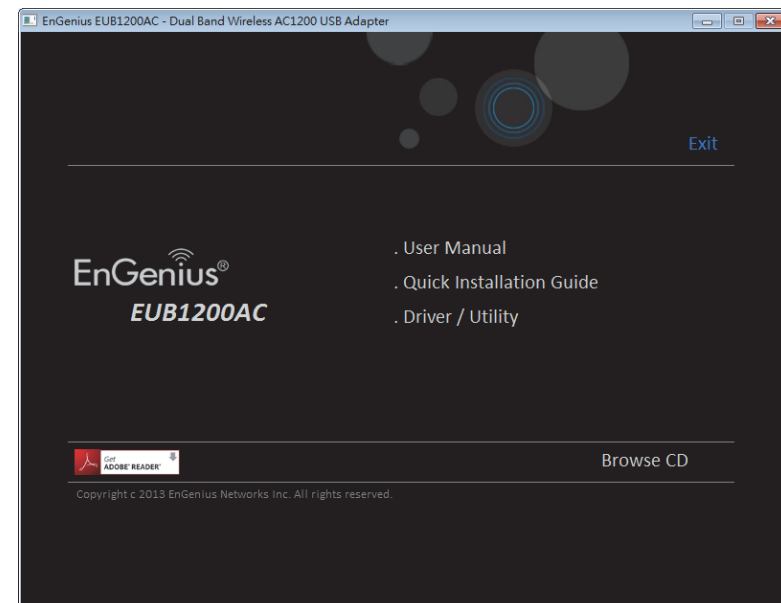
Installing the Driver

Before you can use the EUB1200AC Dual Band USB Adapter you must install the device driver.

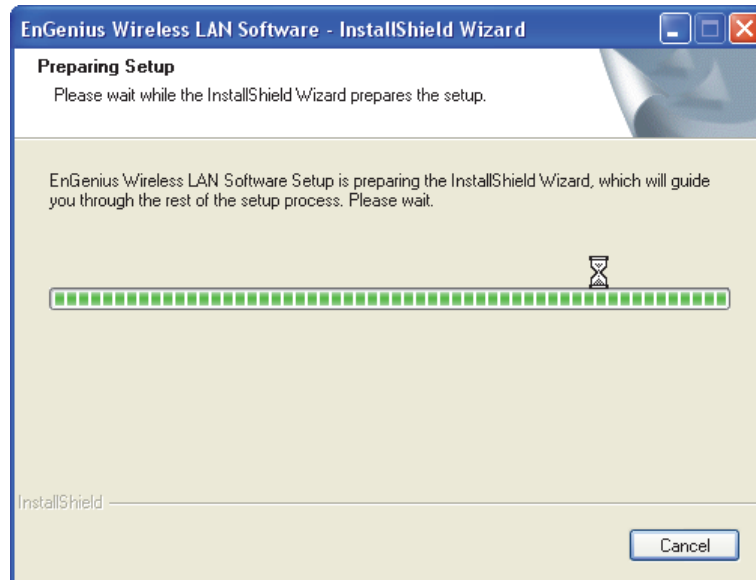
To install the USB adapter drivers, follow these steps:

1. Insert the CD-ROM that was provided to you in this package. The setup should run automatically. If the setup does

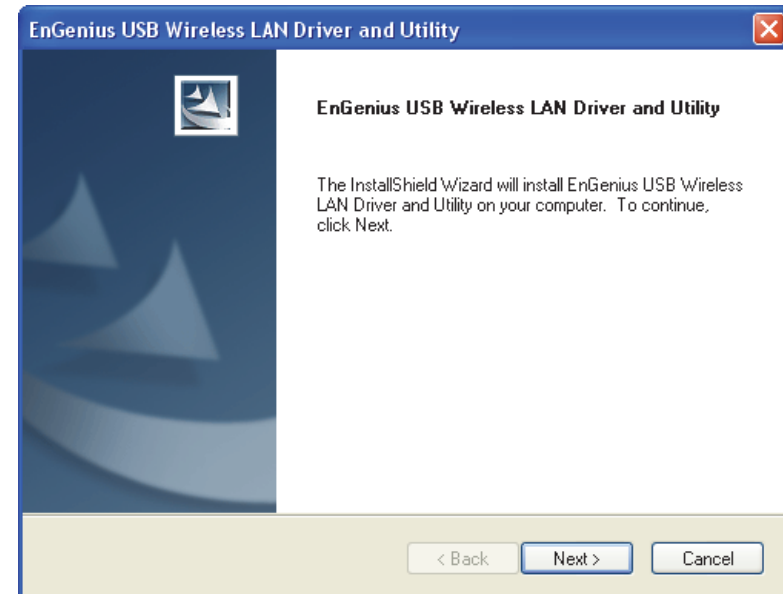
not run automatically, then the setup.exe file must be selected manually from the CD-ROM drive.



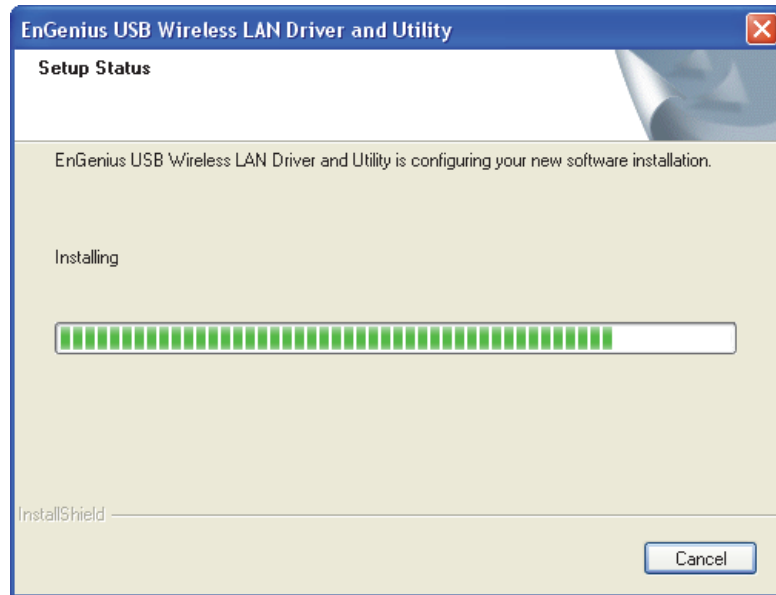
2. Click on Windows Driver to start the install process.



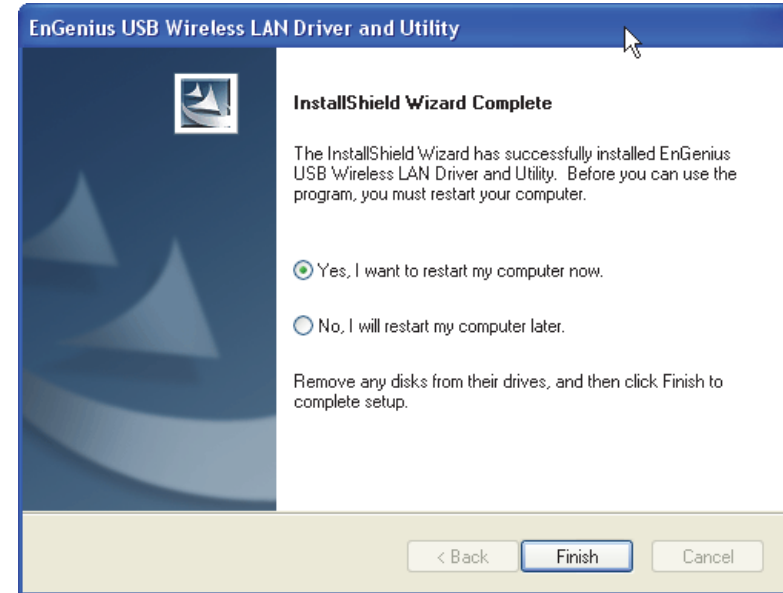
3. Click on the Next button to begin the driver installation.



4. Wait until the driver and client utility is installed.



5. When installation is complete click on the Finish button to restart your computer.



Uninstalling the Driver

If you want to remove the EUB1200AC EUB1200AC Dual Band USB Adapter from your system, use device's uninstall application or the Windows uninstall process.

2.2 Wireless LAN Utility

There are five sections that allow the user to configure and monitor the device: general, profile, available networks, status, and Wi-Fi protected setup.

Additional configuration options located at the bottom of the window that define the behavior of the utility. The available options are as follows:

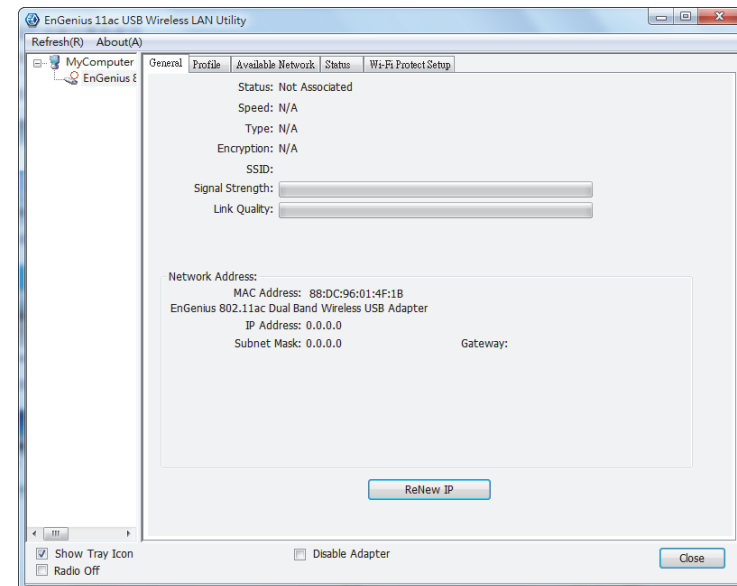
Show Tray Icon: Show/hide the Utility icon in the system tray.

Radio Off: Temporarily turn off wireless radio.

Disable Adapter: Temporarily disable the wireless adapter

General

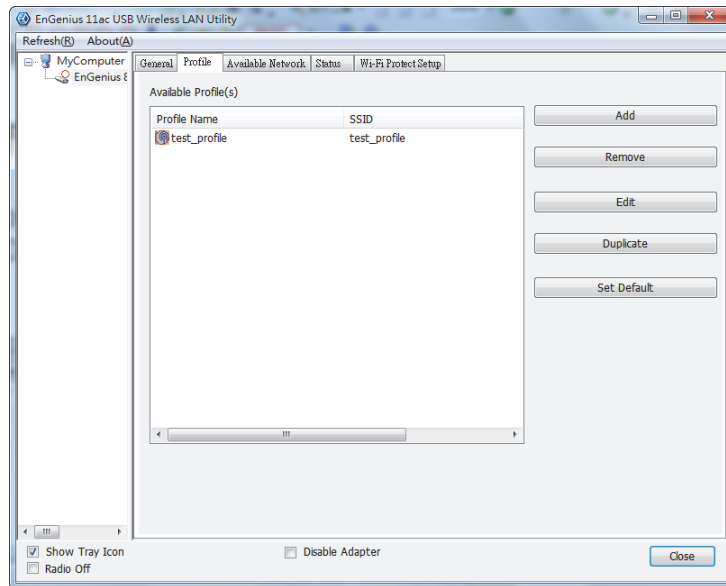
The **General** section shows the connection status, speed, type, encryption, SSID, signal strength, and link quality of the AC1200 Dual Band USB Adapter.



Click on the Renew IP button to re-initiate the wireless connection with the AP.

Profile

The Profile section is used to create and modify profiles that the AC1200 Dual Band USB Adapter uses to connect to access points.



To create or modify an access point profile, use the following buttons:

Add: Manually enter an access point's configuration settings.

Edit: Modify an access point's configuration settings.

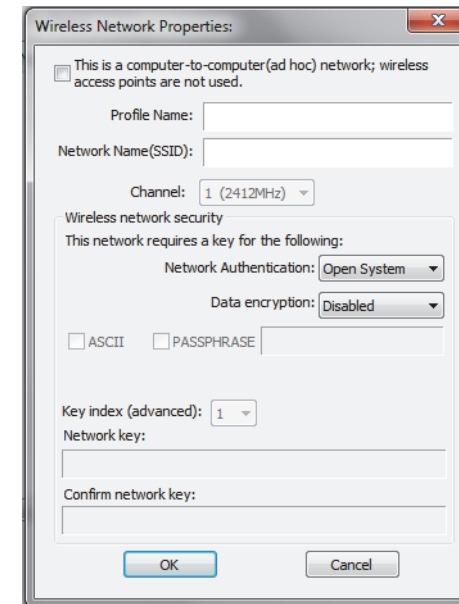
Remove: Delete the configuration settings of an access point.

Duplicate: Clone an access point's profile.

Set Default: Reset all saved settings.

Wireless Network Properties Dialog

Use the wireless network properties dialog to enter the connection properties for an access point.



Fill in the following wireless network properties to create an access point profile:

Ad hoc Enables the adapter to operate in ad hoc or infrastructure mode.

Profile Name The name of the access point that is shown in the profile list.

Network Name (SSID) The name of the access point as shown on the network.

Channel The channel that the access point is broadcasting on.

Network Authentication The protocol used for network authentication.

Data Encryption The protocol used for data encryption.

ASCII Enables use of ASCII characters in the passphrase.

Passphrase Enables the use of hexadecimal characters passphrase.

Key Index (advanced) User has to specify which of the four keys will be active. Please make sure that both the AP/Router you are connected to and the EUB1200AC use the same key.

Network Key The encryption key used to encrypt the data packets during data transmission.

Adding a Profile

Note:

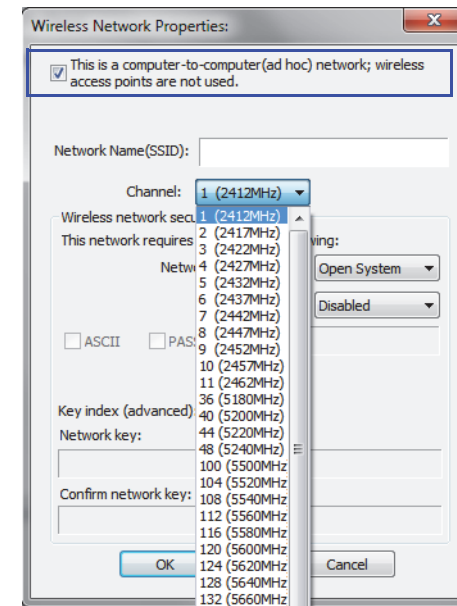
When using the ASCII or PASSPHRASE feature the password must be obtained from the router.

To add a profile, follow these steps:

1. Click the **Add** button.
2. Select the checkbox to specify an ad hoc network.

Note:

If the ad hoc checkbox is selected, **Profile Name** is not available.



3. Enter the profile name in **Profile Name**.
4. Enter the SSID in the **Network Name (SSID)**.

Note:

The list of channels is only available if the ad hoc checkbox is selected.

5. Select a channel from the **Channel** list. Available channels are from 1 to 161.
6. Select a network authentication protocol from the **Network Authentication** protocol list. The following protocols can be selected:
 - Open System
 - Shared Key
 - WPA-PSK
 - WPA2-PSK
 - WPA 802.1X
 - WPA2 802.1X
 - WEP 802.1X

7. Select the **ASCII** checkbox to enter a password using ASCII characters.

Wireless Network Properties:

This is a computer-to-computer (ad hoc) network; wireless access points are not used.

Profile Name: RouterforTecom

Network Name(SSID): RouterforTecom

Channel: 1 (2412MHz)

Wireless network security

This network requires a key for the following:

Network Authentication: Open System

Data encryption: WEP

ASCII PASSPHRASE

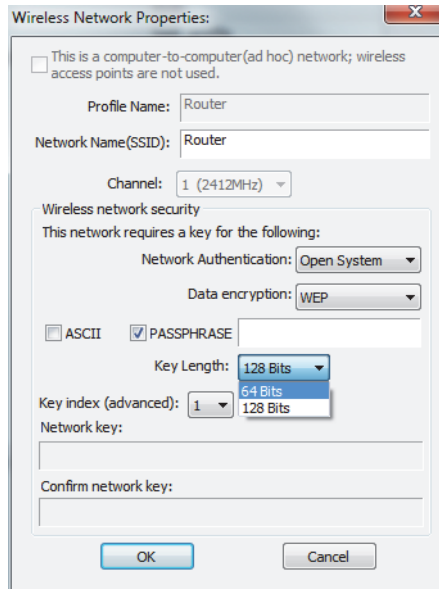
Key index (advanced): 1

Network key:

Confirm network key:

OK Cancel

8. Select the **PASSPHRASE** checkbox to enter a password using hexadecimal characters. The passphrase key length can be either 64 or 128 bits.



9. Select the key index from the **Key index** list.
10. Enter the network key value in **Network key**.
11. Enter the same network key value again in **Confirm network key**.
12. Click the **OK** button to save the profile settings or the **Cancel** button to discard settings.

Editing a Profile

Note:

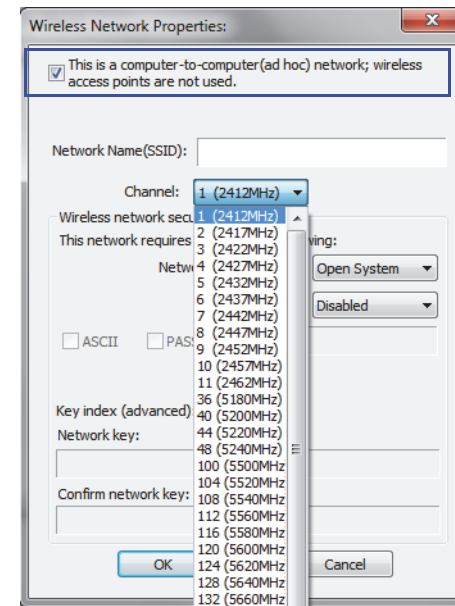
When using the ASCII or PASSPHRASE feature the password must be obtained from the router.

To edit a profile, follow these steps:

1. Click the **Edit** button.
2. Select the checkbox to specify an ad hoc network.

Note:

If the ad hoc checkbox is selected, **Profile Name** is not available.



3. Enter the profile name in **Profile Name**.

4. Enter the SSID in the **Network Name (SSID)**.

Note:

The list of channels is only available if the ad hoc checkbox is selected.

5. Select a channel from the **Channel** list. Available channels are from 1 to 161.
6. Select a network authentication protocol from the **Network Authentication** protocol list. The following protocols can be selected:
 - Open System
 - Shared Key
 - WPA-PSK
 - WPA2-PSK
 - WPA 802.1X
 - WPA2 802.1X
 - WEP 802.1X

7. Select the **ASCII** checkbox to enter a password using ASCII characters.

Wireless Network Properties:

This is a computer-to-computer (ad hoc) network; wireless access points are not used.

Profile Name: RouterforTecom

Network Name(SSID): RouterforTecom

Channel: 1 (2412MHz)

Wireless network security

This network requires a key for the following:

Network Authentication: Open System

Data encryption: WEP

ASCII PASSPHRASE

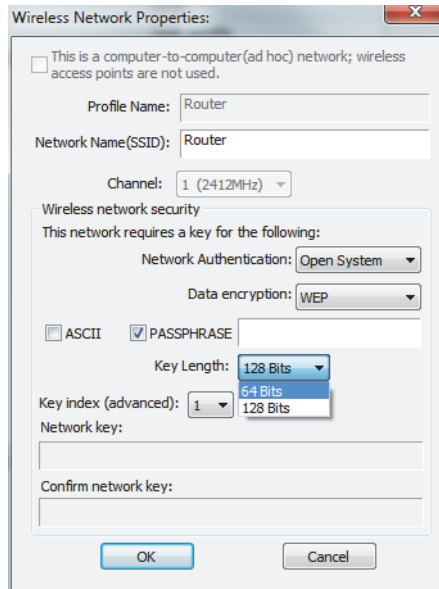
Key index (advanced): 1

Network key:

Confirm network key:

OK Cancel

- Select the **PASSPHRASE** checkbox to enter a password using hexadecimal characters. The passphrase key length can be either 64 or 128 bits.

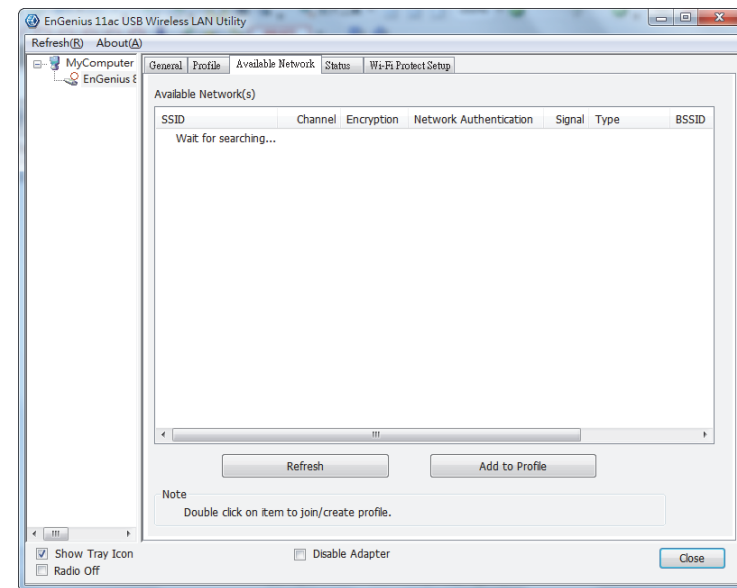


- Select the key index from the **Key index** list.
- Enter the network key value in **Network key**.
- Enter the same network key value again in **Confirm network key**.
- Click the **OK** button to save the profile settings or the **Cancel** button to discard settings.

Available Network

You can find access points that are within the proximity of your adapter by using the device to scan for them.

The information returned by the adapter is shown in a list and includes the SSID, channel, encryption type, authentication type and signal strength.

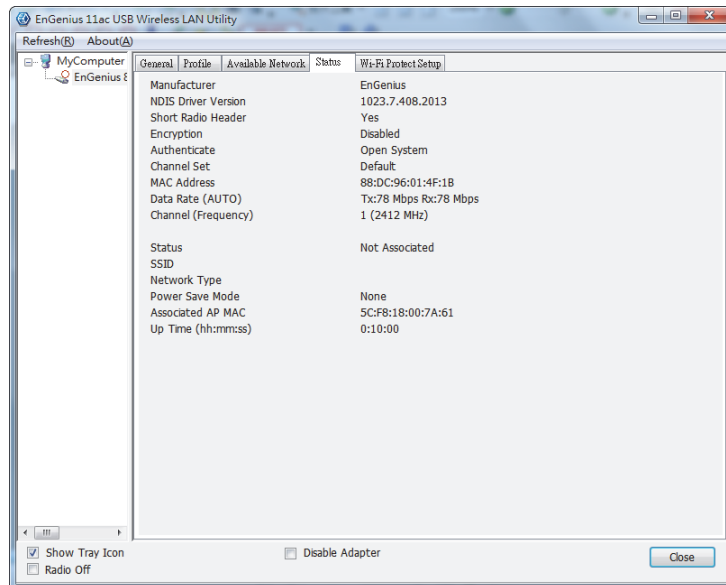


If you want to view available access points, click the **Refresh** button.

If you want to add an access point to your list of profiles, click on the **Add to Profile** button.

Status

The Status section shows a more detailed view of the information about the status of the adapter and the network connection.



The following information is displayed in the section:

- Manufacturer
- NDIS Driver Version
- Short Radio Header
- Encryption type
- Authenticate type
- Channel Set

- MAC Address
- Data Rate
- Channel used
- Status
- SSID
- Network Type
- Power Save Mode
- Associated AP MAC
- Up Time (hh:mm:ss)

Wi-Fi Protected Setup

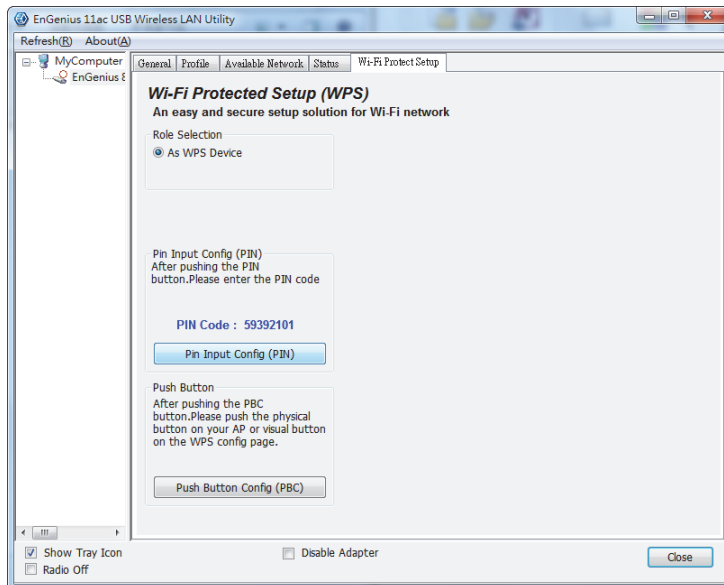
Use the Wi-Fi protected setup function to setup a connection between the adapter and a WPS enabled router.

There are two ways to create a WPS connection: pin input config (PIN) or push button config (PBC).

PIN Input Config

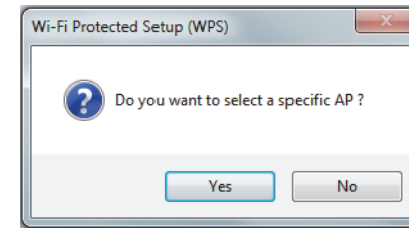
Note:

You must enter the PIN code in your router's configuration dialog before establishing a connection.

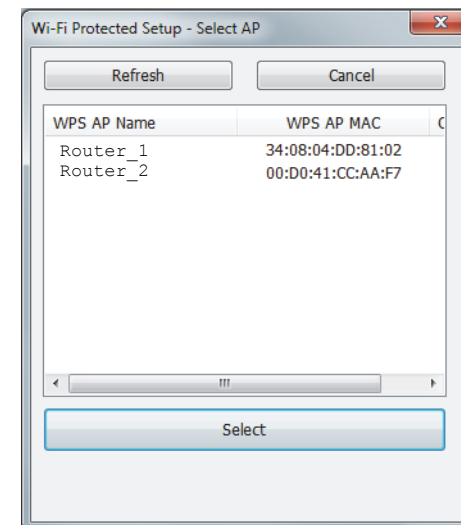


1. Click on the **PIN Input Config** button to start the PIN code process.

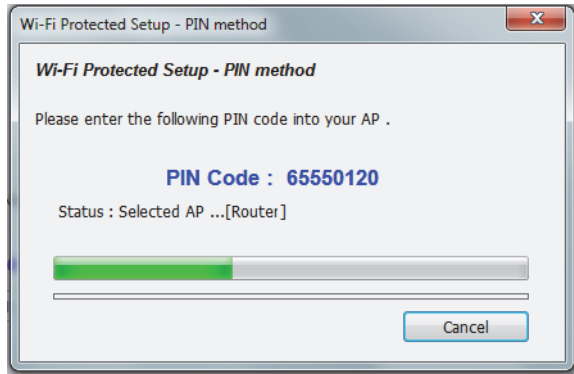
2. Select **Yes** to start scanning for access points.



3. Select the target AP and click the **Select** button.

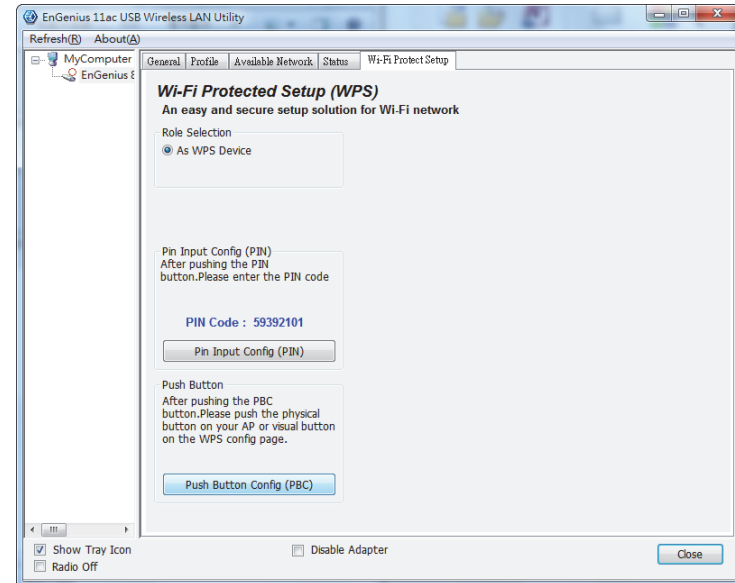


The following dialog is shown while the router is accepting the connection.



When the dialog disappears the connection is established.

Push Button Config

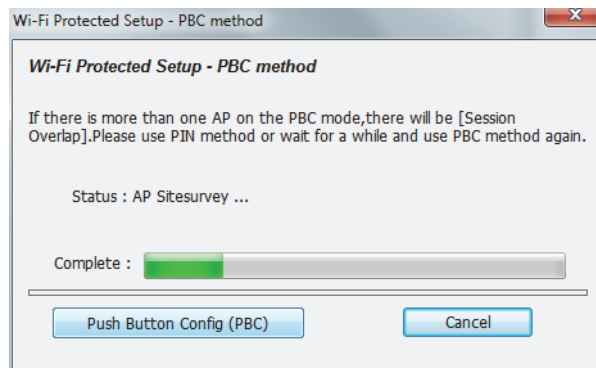


1. Click on the **Push Button Config** button to start the process.

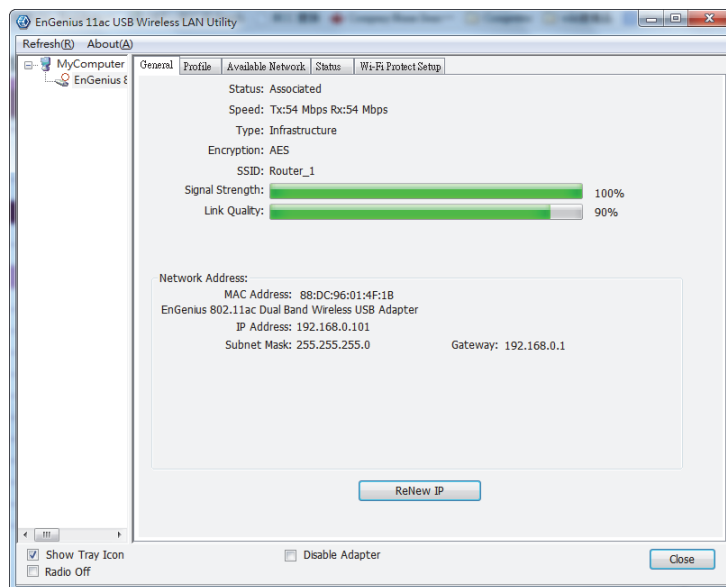
Note:

The **Push Button Config** button and the **WPS** button on the access point must be pushed within ten seconds of each other.

2. Click on the **Push Button Config** in the following dialog.



3. Press the **WPS** button on the access point.
The connection is established within a few seconds.



MAC OS X

Chapter 3

3.1 USB Adapter

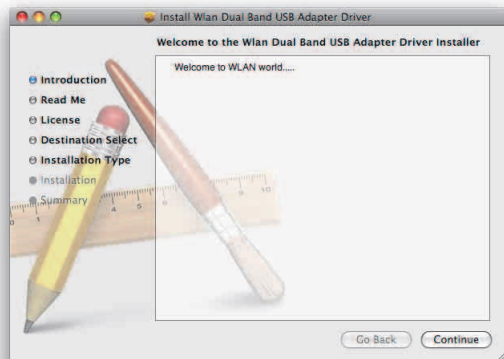
3.1.1 Installing and Uninstalling the Driver

Installing the Driver

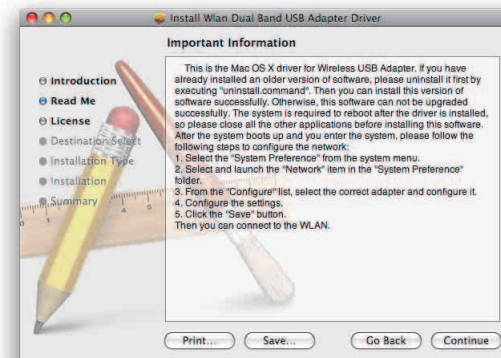
Before you can use the AC1200 Dual Band USB Adapter you must install the device driver.

To install the USB adapter drivers, follow these steps:

1. Insert the CD-ROM that was provided to you in this package. The setup should run automatically. If the setup does not run automatically, then you must locate the setup file manually from the CD-ROM under the /Drivers/ folder.
2. Click on the Continue button to configure the next step.



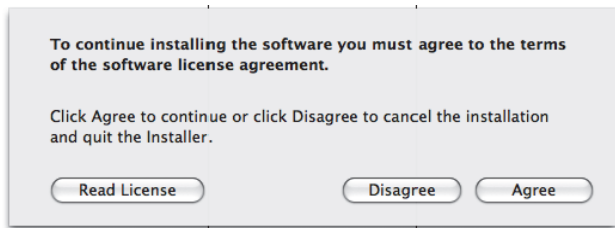
3. Read the Important Information and then click on the Install button.



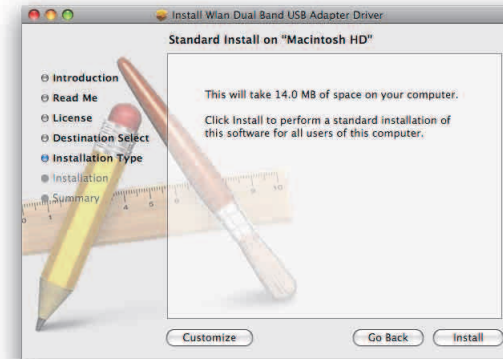
4. Select a language to read the software license agreement and then click on the **Continue** button to display the license dialog.



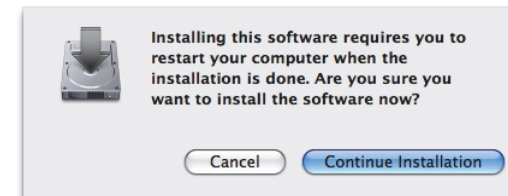
5. Click on the **Read License** button to read the license agreement. After you have read the agreement click on the **Agree** button to continue or **Disagree** to cancel the installation.



6. Click on the **Install** button to begin the installation process or **Go Back** to return to the previous step.



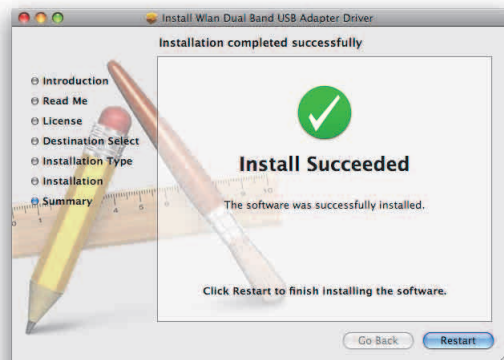
7. When the installation warning dialog is shown click the **Continue Installation** button to continue or the **Cancel** button to abort the process.



8. Click the **Restart** button to restart your system.

Note:

The adapter may not function properly if you do not restart the system.



9. Insert the USB adapter into the USB port. MAC OS X will detect and install the new hardware.
10. The client utility is installed in the **Applications** folder.

Uninstalling the Driver

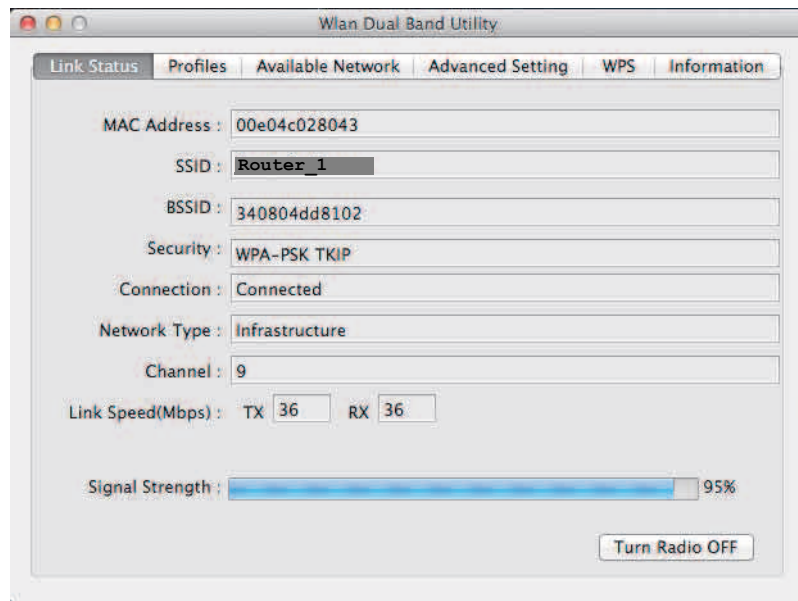
If you want to remove the AC1200 Dual Band USB Adapter from your system, use device's uninstall application or the Windows uninstall process.

3.2 Wireless LAN Utility

There are six sections that allow the user to configure and monitor the device: link status, profiles, available network, advanced setting, WPS and information.

Link Status

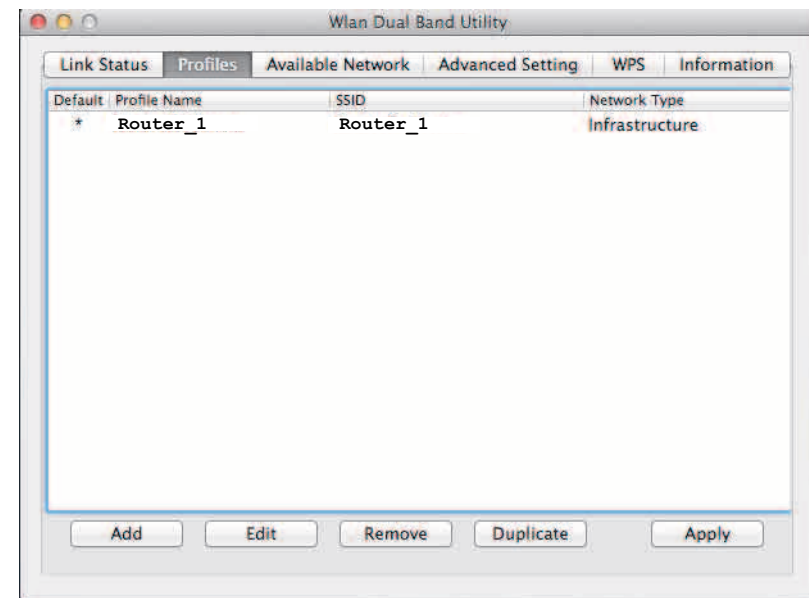
The **Link Status** section shows the MAC address, SSID, BSSID, security type, connection status, network type, channel, link speed, and signal strength of the AC1200 Dual Band USB Adapter.



Click on the **Turn Radio OFF** button to deactivate the adapter. Click on the **Turn Radio ON** button to activate the adapter.

Profile

The Profile section is used to create and modify profiles that the AC1200 Dual Band USB Adapter uses to connect to access points.



To create or modify an access point profile, use the following buttons:

Add: Manually enter an access point's configuration settings.

Edit: Modify an access point's configuration settings.

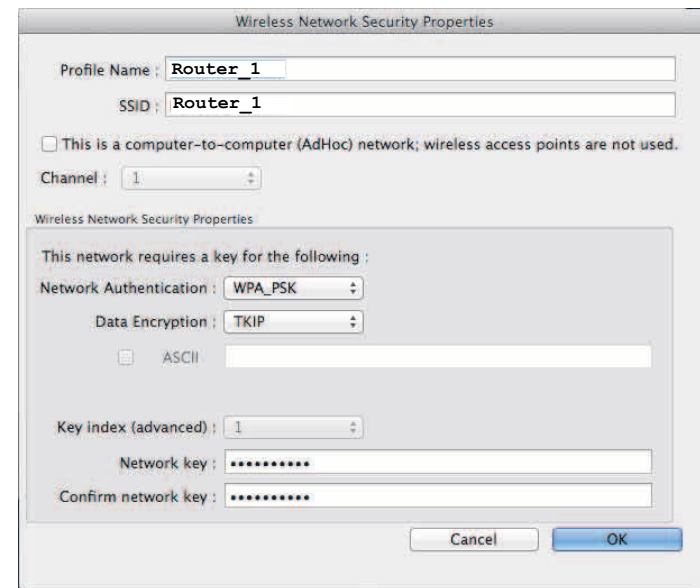
Remove: Delete the configuration settings of an access point.

Duplicate: Clone an access point's profile.

Set Default: Reset all saved settings.

Wireless Network Properties Dialog

Use the wireless network properties dialog to enter the connection properties for an access point.



Fill in the following wireless network properties to create an access point profile:

Profile Name The name of the access point that is shown in the profile list.

SSID The name of the access point as shown on the network.

Ad hoc Enables the adapter to operate in ad hoc or infrastructure mode.

Channel The channel that the access point is broadcasting on.

Network Authentication The protocol used for network authentication.

Data Encryption The protocol used for data encryption.

ASCII Enables use of ASCII characters in the passphrase.

Key Index (advanced) User has to specify which of the four keys will be active. Please make sure that both the AP/Router you are connected to and the EUB1200AC use the same key.

Network Key The encryption key used to encrypt the data packets during data transmission.

Adding a Profile

Note:

When using the ASCII or Network key feature the password must be obtained from the router.

To add a profile, follow these steps:

1. Click the **Add** button.
2. Select the checkbox to specify an ad hoc network.

Note:

If the ad hoc checkbox is selected, **Profile Name** is not available.

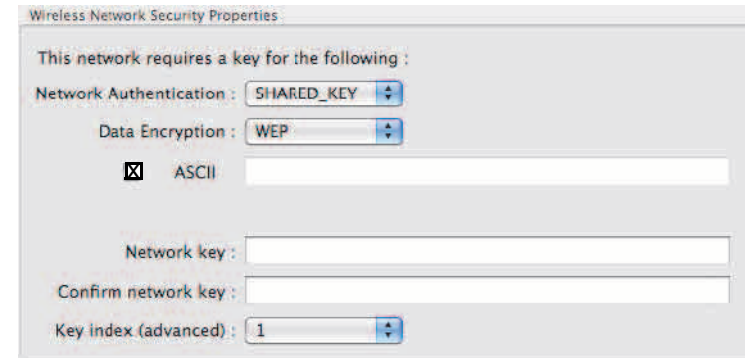
3. Enter the profile name in **Profile Name**.

4. Enter the SSID in **SSID**.

Note:

The list of channels is only available if the ad hoc checkbox is selected.

5. Select a channel from the **Channel** list. Available channels are from 1 to 11.
6. Select a network authentication protocol from the **Network Authentication** protocol list. The following protocols can be selected:
 - Open System
 - Shared Key
 - WPA-PSK
 - WPA2-PSK
 - WPA 802.1X
 - WPA2 802.1X
 - WEP 802.1X
7. Select the **ASCII** checkbox to enter a five or thirteen character password using the WEP protocol.
8. Enter the network key value in **Network key**. For 64-bit key length enter 10 hexadecimal characters. For 128-bit key length enter 26 hexadecimal characters.
9. Enter the same network key value again in **Confirm network key**.
10. Select the key index from the **Key index** list.
11. Click the **OK** button to save the profile settings or the **Cancel** button to discard settings.



Editing a Profile

Note:

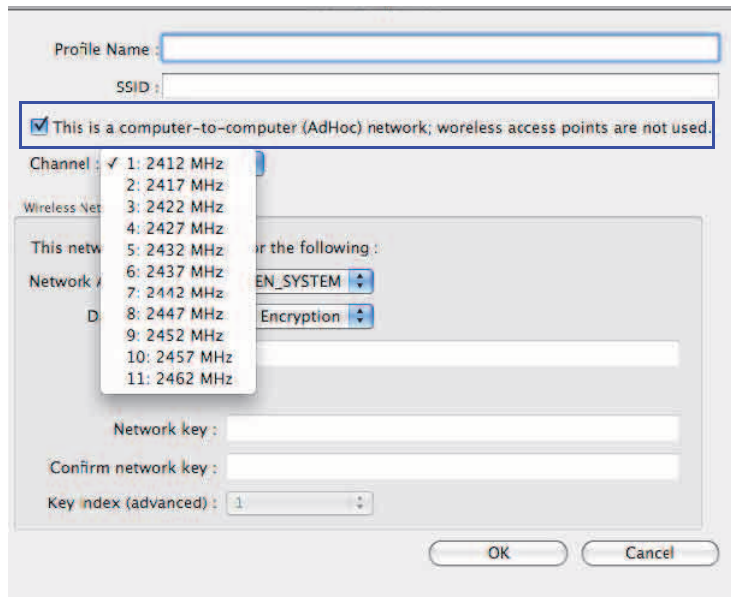
When using the ASCII or Network key feature the password must be obtained from the router.

To edit a profile, follow these steps:

1. Click the **Add** button.
2. Select the checkbox to specify an ad hoc network.

Note:

If the ad hoc checkbox is selected, **Profile Name** is not available.



3. Enter the profile name in **Profile Name**.

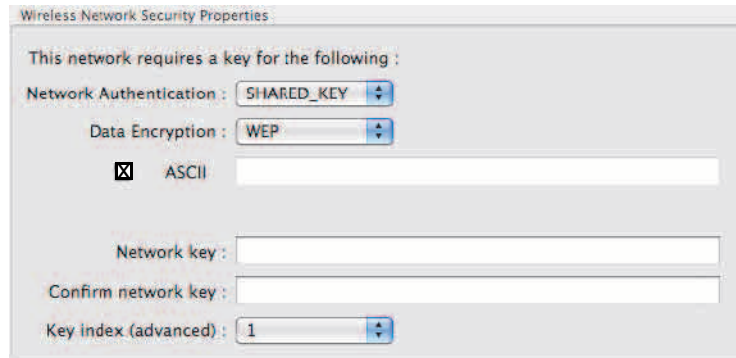
4. Enter the SSID in **SSID**.

Note:

The list of channels is only available if the ad hoc checkbox is selected.

5. Select a channel from the **Channel** list. Available channels are from 1 to 11.
6. Select a network authentication protocol from the **Network Authentication** protocol list. The following protocols can be selected:
 - Open System
 - Shared Key
 - WPA-PSK
 - WPA2-PSK
 - WPA 802.1X
 - WPA2 802.1X
 - WEP 802.1X

- Select the **ASCII** checkbox to enter a five or thirteen character password when using the WEP protocol.

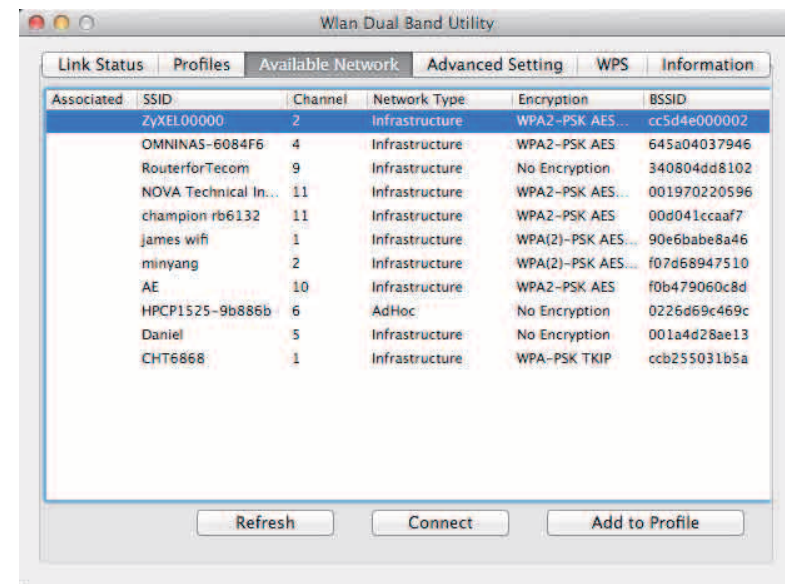


- Enter the network key value in **Network key**. For 64-bit key length enter 10 hexadecimal characters. For 128-bit key length enter 26 hexadecimal characters.
- Enter the same network key value again in **Confirm network key**.
- Select the key index from the **Key index** list.
- Click the **OK** button to save the profile settings or the **Cancel** button to discard settings.

Available Network

You can find access points that are within the proximity of your adapter by using the device to scan for them.

The information returned by the adapter is shown in a list and includes the SSID, channel, authentication type, encryption type and BSSID (MAC address).



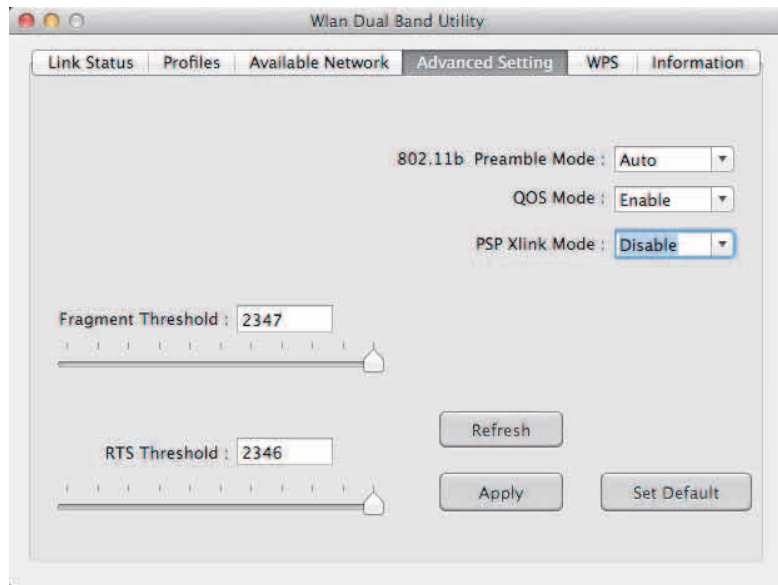
Click the **Refresh** button to view available access points.

Click the **Connect** button to connect to an access point without setting up a profile.

Click on the **Add to Profile** button to add an access point to your list of profiles.

Advanced Settings

In the Advanced Settings section you can modify the 802.11b preamble mode, QoS mode, and PSP Xlink mode.

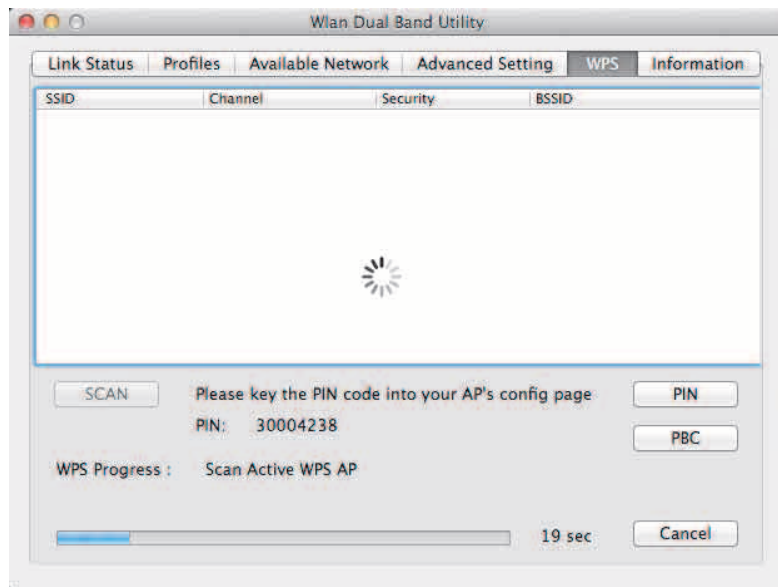


1. Set the preamble mode setting from the **802.11b Preamble Mode** list. Choose **Auto** to let the device make the selection, **Long** for better device compatibility, and **Short** for better network efficiency.
2. Set the QOS mode from the **QOS Mode** list. The options are **Enabled** or **Disabled**.
3. Set the PSP gaming mode from the **PSP Xlink Mode** list. The options are **Enabled** or **Disabled**.
4. Set the **Fragment Threshold** by moving the slider control or manually entering a value in the text box. The fragment threshold specifies the maximum size of a packet during data transmission. A value too low could lead to low performance.
5. Set the **RTS Threshold** by moving the slider control or manually entering a value in the text box. If the packet size is smaller than the RTS threshold, the device will not use RTS/CTS to send the data packet.
6. Click the **Refresh** button to refresh the settings. Click the **Apply** button to save changes settings. Click **Set Default** button to change the current settings back to their default values.

Wi-Fi Protected Setup

If you do not want to set up a protected connection manually, you can use the Wi-Fi protected setup function.

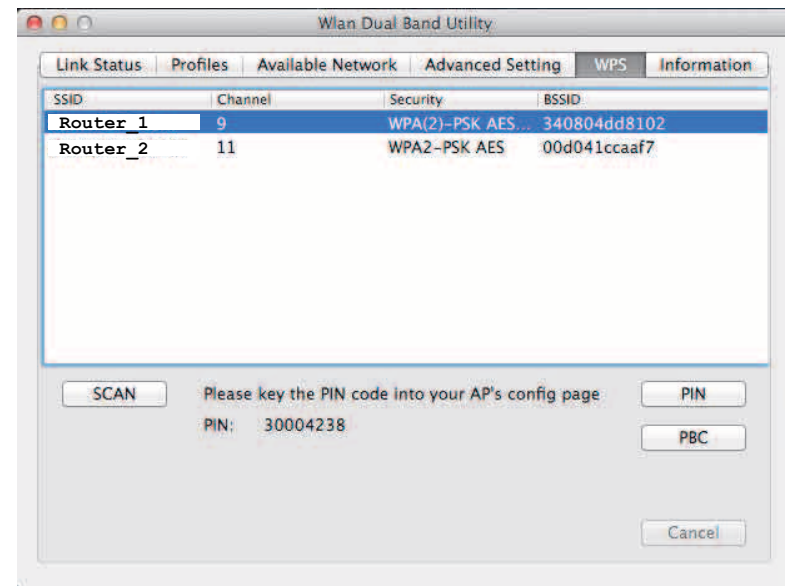
There are two ways to create a WPS connection: pin input config (PIN) or push button config (PBC). Before selecting either method, click the **SCAN** button to locate the access points within the proximity of the adapter.



PIN Input Config

Note:

You must enter the PIN code in your router's configuration dialog before establishing a connection.



1. Select the target access point.
2. Click the **PIN** button.

When the connection is established the Link Status section will show the connection information. See *Link Status* for more details.

Push Button Config

1. Select the target access point.
2. Click the **PBC** button.

Note:

The **PBC** button and the **WPS** button on the access point must be pushed within ten seconds of each other.

3. Press the **WPS** button on the access point.

When the connection is established the Link Status section will show the connection information. See *Link Status* for more details.

Information

The Information tab displays information about the network driver version and date.

Appendix A

Federal Communication Commission Interference Statement

This device complies with Part 15 of the FCC Rules. Operation is subject to the following two conditions: (1) This device may not cause harmful interference, and (2) this device must accept any interference received, including interference that may cause undesired operation.

This equipment has been tested and found to comply with the limits for a Class B digital device, pursuant to Part 15 of the FCC Rules. These limits are designed to provide reasonable protection against harmful interference in a residential installation. This equipment generates, uses and can radiate radio frequency energy and, if not installed and used in accordance with the instructions, may cause harmful interference to radio communications. However, there is no guarantee that interference will not occur in a particular installation. If this equipment does cause harmful interference to radio or television reception, which can be determined by turning the equipment off and on, the user is encouraged to try to correct the interference by one of the following measures:

- Reorient or relocate the receiving antenna.
- Increase the separation between the equipment and receiver.
- Connect the equipment into an outlet on a circuit different from that to which the receiver is connected.
- Consult the dealer or an experienced radio/TV technician for help



WARNING!

Any changes or modifications not expressly approved by the party responsible for compliance could void the user's authority to operate this equipment.

This transmitter must not be co-located or operating in conjunction with any other antenna or transmitter.

Operations in the 5.15-5.25GHz band are restricted to indoor usage only.

Radiation Exposure Statement

The product comply with the FCC portable RF exposure limit set forth for an uncontrolled environment and are safe for intended operation as described in this manual. The further RF exposure reduction can be achieved if the product can be kept as far as possible from the user body or set the device to lower output power if such function is available.

The USB dongle transmitter is approved for use in typical laptop computers. To comply with FCC RF exposure requirements, it should not be used in other devices or certain laptop and tablet computer configurations where the USB connectors on the host computer are unable to provide or ensure the necessary operating configurations intended for the device and its users or bystanders to satisfy RF exposure compliance requirements.



WARNING!

For body-worn operating conditions please use belt-clips, holsters, and/or accessories that have no metallic component in the assembly and must provide at least 0.5 cm separation between the device and the user's body.

Appendix B

Industry Canada Statement

This device complies with RSS-210 of the Industry Canada Rules. Operation is subject to the following two conditions: (1) This device may not cause harmful interference, and (2) this device must accept any interference received, including interference that may cause undesired operation.

Ce dispositif est conforme à la norme CNR-210 d'Industrie Canada applicable aux appareils radio exempts de licence. Son fonctionnement est sujet aux deux conditions suivantes: (1) le dispositif ne doit pas produire de brouillage préjudiciable, et (2) ce dispositif doit accepter tout brouillage reçu, y compris un brouillage susceptible de provoquer un fonctionnement indésirable.



WARNING!

(i) the device for operation in the band 5150-5250 MHz is only for indoor use to reduce the potential for harmful interference to co-channel mobile satellite systems;

(ii) high-power radars are allocated as primary users (i.e. priority users) of the bands 5250-5350 MHz and 5650-5850 MHz and that these radars could cause interference and/or damage to LE-LAN devices.



Avertissement!

(i) Les dispositifs fonctionnant dans la bande 5 150-5 250 MHz sont réservés uniquement pour une utilisation à l'intérieur afin de réduire les risques de brouillage préjudiciable aux systèmes de satellites mobiles utilisant les mêmes canaux;

(ii) De plus, les utilisateurs devraient aussi être avisés que les utilisateurs de radars de haute puissance sont désignés utilisateurs principaux (c.-à-d., qu'ils ont la priorité) pour les bandes 5 250-5 350 MHz et 5 650-5 850 MHz et que ces radars pourraient causer du brouillage et/ou des dommages aux dispositifs LAN-EL.

Radiation Exposure Statement

The product comply with the Canada portable RF exposure limit set forth for an uncontrolled environment and are safe for intended operation as described in this manual. The further RF exposure reduction can be achieved if the product can be kept as far as possible from the user body or set the device to lower output power if such function is available.

Déclaration d'exposition aux radiations:

Le produit est conforme aux limites d'exposition pour les appareils portables RF pour les États-Unis et le Canada établies pour un environnement non contrôlé.

Le produit est sûr pour un fonctionnement tel que décrit dans ce manuel. La réduction aux expositions RF peut être augmentée si l'appareil peut être conservé aussi loin que possible du corps de l'utilisateur ou que le dispositif est réglé sur la puissance de sortie la plus faible si une telle fonction est disponible.



WARNING!

For body-worn operating conditions please use belt-clips, holsters, and/or accessories that have no metallic component in the assembly and must provide at least 0.5 cm separation between the device and the user's body.

Appendix C

Europe – EU Declaration of Conformity

This device complies with the essential requirements of the R&TTE Directive 1999/5/EC. The following test methods have been applied in order to prove presumption of conformity with the essential requirements of the R&TTE Directive 1999/5/EC:

- EN60950-1
Safety of Information Technology Equipment
- EN 62479:
Assessment of electronic and electrical equipment related to human exposure restrictions for electromagnetic fields (0 Hz-300 GHz)
- EN 300 328
Electromagnetic compatibility and Radio spectrum Matters (ERM); Wideband Transmission systems; Data transmission equipment operating in the 2,4 GHz ISM band and using spread spectrum modulation techniques; Harmonized EN covering essential requirements under article 3.2 of the R&TTE Directive
- EN 301 893
Broadband Radio Access Networks (BRAN); 5 GHz high performance RLAN; Harmonized EN covering essential requirements of article 3.2 of the R&TTE Directive
- EN 301 489-1
Electromagnetic compatibility and Radio Spectrum Matters (ERM); ElectroMagnetic Compatibility (EMC) standard for radio equipment and services; Part 1: Common technical requirements

- EN 301 489-17

Electromagnetic compatibility and Radio spectrum Matters (ERM); ElectroMagnetic Compatibility (EMC) standard for radio equipment and services; Part 17: Specific conditions for 2,4 GHz wideband transmission systems and 5 GHz high performance RLAN equipment

This device is a 5GHz wideband transmission system (transceiver), intended for use in all EU member states and EFTA countries, except in France and Italy where restrictive use applies.

In Italy the end-user should apply for a license at the national spectrum authorities in order to obtain authorization to use the device for setting up outdoor radio links and/or for supplying public access to telecommunications and/or network services.

This device may not be used for setting up outdoor radio links in France and in some areas the RF output power may be limited to 10 mW EIRP in the frequency range of 2454 – 2483.5 MHz. For detailed information the end-user should contact the national spectrum authority in France.

CE 0560

Česky [Czech]	[Jméno výrobce] tímto prohlašuje, že tento [typ zařízení] je ve shodě se základními požadavky a dalšími příslušnými ustanoveními směrnice 1999/5/ES.
Dansk [Danish]	Undertegnede [fabrikantens navn] erklærer herved, at følgende udstyr [udstyrets typebetegnelse] overholder de væsentlige krav og øvrige relevante krav i direktiv 1999/5/EF.
Deutsch [German]	Hiermit erkläre [Name des Herstellers], dass sich das Gerät [Gerätetyp] in Übereinstimmung mit den grundlegenden Anforderungen und den übrigen einschlägigen Bestimmungen der Richtlinie 1999/5/EG befindet.
Eesti [Estonian]	Käesolevaga kinnitab [tootja nimi = name of manufacturer] seadme [seadme tüüp = type of equipment] vastavust direktiivi 1999/5/EÜ põhinõuetele ja nimetatud direktiivist tulenevatele teistele asjakohastele sätetele.
English	Hereby, [name of manufacturer], declares that this [type of equipment] is in compliance with the essential requirements and other relevant provisions of Directive 1999/5/EC.
Español [Spanish]	Por medio de la presente [nombre del fabricante] declara que el [clase de equipo] cumple con los requisitos esenciales y cualesquiera otras disposiciones aplicables o exigibles de la Directiva 1999/5/CE.

Ελληνική [Greek]	ΜΕ ΤΗΝ ΠΑΡΟΥΣΑ [name of manufacturer] ΔΗΛΩΝΕΙ ΟΤΙ [type of equipment] ΣΥΜΜΟΡΦΩΝΕΤΑΙ ΠΡΟΣ ΤΙΣ ΟΥΣΙΩΔΕΙΣ ΑΠΑΙΤΗΣΕΙΣ ΚΑΙ ΤΙΣ ΛΟΙΠΕΣ ΣΧΕΤΙΚΕΣ ΔΙΑΤΑΞΕΙΣ ΤΗΣ ΟΔΗΓΙΑΣ 1999/5/ΕΚ.
Français [French]	Par la présente [nom du fabricant] déclare que l'appareil [type d'appareil] est conforme aux exigences essentielles et aux autres dispositions pertinentes de la directive 1999/5/CE.
Italiano [Italian]	Con la presente [nome del costruttore] dichiara che questo [tipo di apparecchio] è conforme ai requisiti essenziali ed alle altre disposizioni pertinenti stabilite dalla direttiva 1999/5/CE.
Latviski [Latvian]	Ar šo [name of manufacturer / izgatavotāja nosaukums] deklarē, ka [type of equipment / iekārtas tips] atbilst Direktīvas 1999/5/ΕΚ būtiskajām prasībām un citiem ar to saistītajiem noteikumiem.
Lietuvių [Lithuanian]	Šiuo [manufacturer name] deklaruoja, kad šis [equipment type] atitinka esminius reikalavimus ir kitas 1999/5/EB Direktyvos nuostatas.
Nederlands [Dutch]	Hierbij verklaart [naam van de fabrikant] dat het toestel [type van toestel] in overeenstemming is met de essentiële eisen en de andere relevante bepalingen van richtlijn 1999/5/EG.
Malti [Maltese]	Hawnhekk, [isem tal-manifattur], jiddikjara li dan [il-mudell tal-prodott] jikkonforma mal-ħtiġijiet essenzjali u ma provvedimenti oħrajn rilevanti li hemm fid-Direttiva 1999/5/EC.
Magyar [Hungarian]	Alulírott, [gyártó neve] nyilatkozom, hogy a [...] típus] megfelel a vonatkozó alapvető követelményeknek és az 1999/5/EC irányelv egyéb előírásainak.
Polski [Polish]	Niniejszym [nazwa producenta] oświadczam, że [nazwa wyrobu] jest zgodny z zasadniczymi wymogami oraz pozostałymi stosownymi postanowieniami Dyrektywy 1999/5/EC.
Português [Portuguese]	[Nome do fabricante] declara que este [tipo de equipamento] está conforme com os requisitos essenciais e outras disposições da Directiva 1999/5/CE.
Slovensko [Slovenian]	[Ime proizvajalca] izjavlja, da je ta [tip opreme] v skladu z bistvenimi zahtevami in ostalimi relevantnimi določili direktive 1999/5/ES.
Slovensky [Slovak]	[Meno výrobcu] týmto vyhlasuje, že [typ zariadenia] spĺňa základné požiadavky a všetky príslušné ustanovenia Smernice 1999/5/ES.
Suomi [Finnish]	[Valmistaja = manufacturer] vakuuttaa täten että [type of equipment = laitteen tyyppimerkintä] tyyppinen laite on direktiivin 1999/5/EY oleellisten vaatimusten ja sitä koskevien direktiivin muiden ehtojen mukainen.
Svenska [Swedish]	Härmed intygar [företag] att denna [utrustningstyp] står i överensstämmelse med de väsentliga egenskapskrav och övriga relevanta bestämmelser som framgår av direktiv 1999/5/EG.

Appendix D

WorldWide Technical Support

REGION/COUNTRY OF PURCHASE	SERVICE CENTRE	SERVICE INFORMATION	
Canada	CANADA	web site	www.engeniuscanada.com
		email	rma@engeniuscanada.com
		contact numbers	Toll Free: (+1) 888-397-2788 Local: (+1) 905-940-8181
		hours of operation	Monday - Friday 9:00AM to 5:30PM EST (GMT-5)
USA	LOS ANGELES, USA	web site	www.engiustech.com
		email	support@engiustech.com
		contact numbers	Toll Free: (+1) 888-735-7888 Local: (+1) 714-432-8668
		hours of operation	Monday - Friday 8:00 AM to 4:30 PM PST (GMT-8)

REGION/COUNTRY OF PURCHASE	SERVICE CENTRE		SERVICE INFORMATION
Mexico, Central and Southern America	MIAMI, USA	web site	[ES] es.engeniustech.com [PT] pg.engeniustech.com
		email	miamisupport@engeniustech.com
		contact numbers	Miami: (+1) 305-887-7378 Sao Paulo, Brazil: (+55)11-3957-0303 D.F., Mexico:(+52)55-1163-8894
		hours of operation	Monday - Friday 8:00 AM to 5:30PM EST (GMT-5)
Europe	NETHERLANDS	web site	www.engeniusnetworks.eu
		email	support@engeniusnetworks.eu
		contact numbers	(+31) 40-8200-887
		hours of operation	Monday - Friday 9:00 AM - 5:00 PM (GMT+1)
Africa Middle East Russia CIS / Armenia, Azerbaijan, Belarus, Georgia, Kazakhstan, Kyrgyzstan, Moldova, Tajikistan, Turkmenistan, Ukraine, Uzbekistan Turkey Afghanistan Pakistan Bangladesh, Maldives, Nepal, Bhutan, Sri Lanka	DUBAI, UAE	web site	www.engenius-me.com
		email	support@engenius-me.com
		contact numbers	Toll Free: U.A.E.: 800-EnGenius 800-364-364-87 General: (+971) 4357-5599
		hours of operation	Sunday - Thursday 9:00 AM - 6:00 PM (GMT+4)

REGION/COUNTRY OF PURCHASE	SERVICE CENTRE	SERVICE INFORMATION	
Singapore, Cambodia, Indonesia, Malaysia, Thailand, Philippines, Vietnam China, Hong Kong, Korea India South Africa Oceania	SINGAPORE	web site	www.engeniustech.com.sg/e_warranty_form
		email	techsupport@engeniustech.com.sg
		contact numbers	Toll Free: Singapore: 1800-364-3648
		hours of operation	Monday - Friday 9:00 AM - 6:00 PM (GMT+8)
Others	TAIWAN, R.O.C.	web site	www.engeniusnetworks.com
		email	technology@senao.com

Note:

* Service hours are based on the local time of the service center.

* Please visit the website for the latest information about customer service.