

INSTRUCTION MANUAL

USE UNDER SUPERVISION OF AN ADULT

RADIO CONTROL

• PLEASE READ CAREFULLY BEFORE STARTING TO OPERATE

CROSS COUNTRY UTE™

UTILITY VEHICLE

- FULLY DIRECTIONAL
- WHEEL ALIGNMENT
- FRONT AND REAR SUSPENSION
- WITH WORKING HEADLIGHTS AND TAILLIGHTS



NO. 1240
CROSS COUNTRY UTE UTILITY VEHICLE
(BATTERIES NOT INCLUDED)

BATTERIES REQUIREMENTS:

- CAR: 6 x "AA" BATTERIES (Not included)
- TRANSMITTER: 2 x "AA" BATTERIES (Not included)

WARNING:
CHOKING HAZARD—Small parts
Not for Children under 3 years

NO. 12401
CROSS COUNTRY UTE UTILITY VEHICLE
(BATTERIES INCLUDED)

BATTERIES REQUIREMENTS:

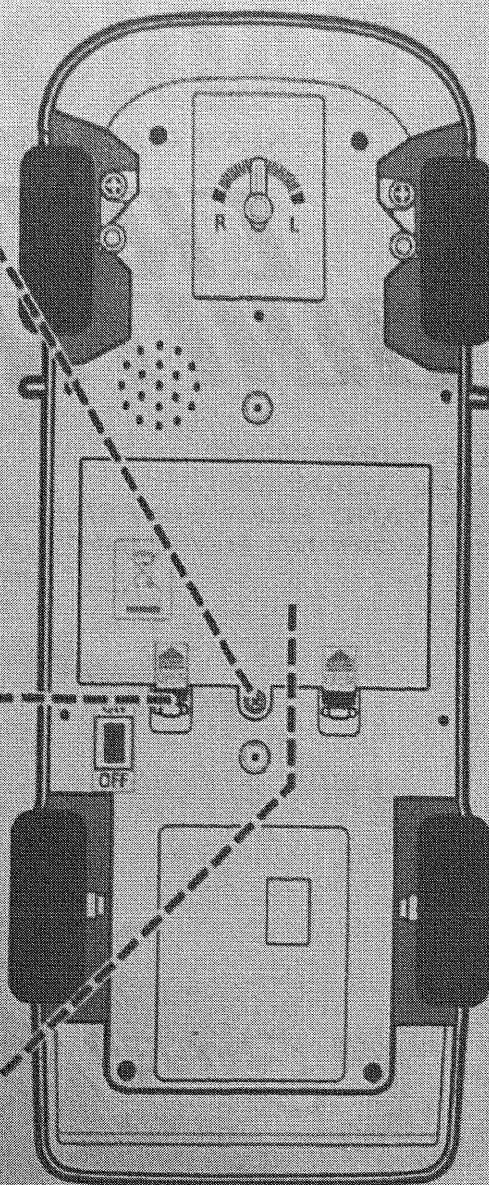
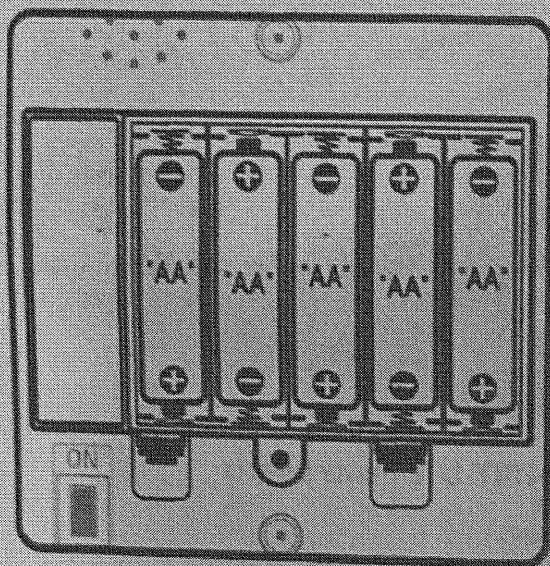
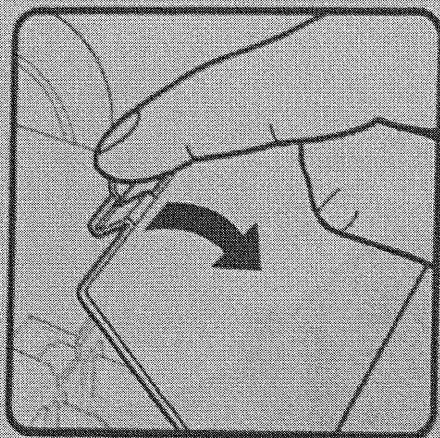
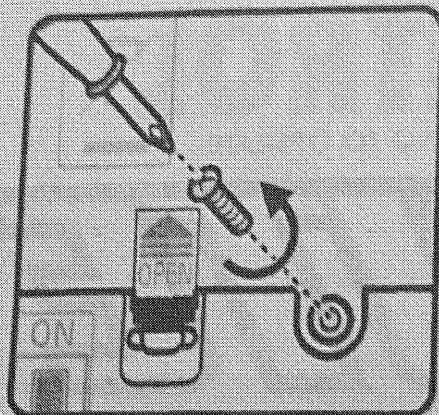
- CAR: 6 x "AA" BATTERIES (included)
- TRANSMITTER: 2 x "AA" BATTERIES (included)

ENERTEC™

Enerotec Enterprises Ltd

(Packing has to be kept since it contains important information)

BATTERY & ON/OFF SWITCH DIAGRAM AND BATTERY INSTALLATION



VEHICLE

OPEN THE BATTERY COMPARTMENT AT THE BOTTOM OF THE CHASSIS WITH A SCREWDRIVER.

- INSERT 5 PCS. "AA" 1.5V BATTERIES INTO THE BATTERY COMPARTMENT. MAKE SURE THE END OF THE BATTERIES OF POSITIVE (+) AND NEGATIVE (-) SIGNS MATCH THE MARKINGS ON THE BATTERY COMPARTMENT.
- CLOSE AND TIGHTEN THE BATTERY COVER USING A SCREWDRIVER.

•IMPORTANT!

MAKE SURE TO TURN THE SWITCH TO THE "OFF" POSITION AFTER USE TO AVOID DRAINAGE OF BATTERIES.