

ARIA 5 MEDIA RECEIVER

Quick Start Guide



Table of Contents

OVERVIEW

- 2 Safety Instructions
- 4 What's Included
- 6 Front Panel
- 7 Rear Panel

CONNECTING VIDEO

- 8 High-Definition TVs
- 9 Standard-Definition TVs

CONNECTING AUDIO

- 10 Stereo

CONNECTING TV SOURCE

- 11 Cable or Antenna

CONNECTING NETWORK

- 12 Ethernet

POWERING UP

- 13 Setting up Remote Control
 - 13 Using IR Extender Receiver
 - 14 Connecting to Power Source
-
- 15 Declaration of Conformity

COPYRIGHT

©2015 Entone, Inc. All rights reserved. This document contains proprietary information protected by copyright. No part of this publication may be reproduced, stored in a retrieval system, or transmitted in any form or by any means, electronic, mechanical, photocopying, recording or otherwise, without the prior written consent of Entone, Inc., 20863 Stevens Creek Blvd, Suite 300, Cupertino, CA 95014, U.S.A.

DISCLAIMER

IF THIS PRODUCT DIRECTS YOU TO COPY MATERIALS, YOU MUST HAVE PERMISSION FROM THE COPY-RIGHT OWNER OF THE MATERIALS TO AVOID VIOLATING THE LAW WHICH COULD RESULT IN DAMAGES OR OTHER REMEDIES.

TRADEMARKS

Entone and the tagline "Connecting the Home" are trademarks of Entone, Inc. All other trademarks or registered trademarks belong to their respective owners.

This item incorporates copy protection technology that is protected by U.S. patents and other intellectual property rights of Rovi Corporation. Reverse engineering and disassembly are prohibited.

CHANGES

The material in this document is for information only and is subject to change without notice. While reasonable efforts have been made in the preparation of this document to assure its accuracy, Entone, Inc. assumes no liability resulting from the use of the information contained herein. Entone, Inc. reserves the right to make changes in the product design without reservation and without notification to its users.

Important Safety Instructions

- **WARNING:** To reduce the risk of fire or electric shock, do not expose this apparatus to rain or moisture.
- The apparatus shall not be exposed to dripping or splashing and that no objects filled with liquids, such as vases, shall be placed on the apparatus.
- Read these instructions.
- Keep these instructions.
- Heed all warnings.
- Follow all instructions.
- Do not use this apparatus near water.
- Clean only with dry cloth.
- Do not block any ventilation openings. Install in accordance with the manufacturer's instructions.
- Do not defeat the safety purpose of the polarized or grounding-type plug. A polarized plug has two blades with one wider than the other. A grounding type plug has two blades and a third grounding prong. The wide blade or the third prongs are provided for your safety. If the provided plug does not fit into your outlet, consult an electrician for replacement of the obsolete outlet.
- Protect the power cord from being walked on or pinched particularly at plugs, convenience receptacles, and the point where they exit from the apparatus.
- Only use attachments/accessories specified by the manufacturer.
- Unplug this apparatus during lightning storms or when unused for long periods of time.
- Refer all servicing to qualified service personnel. Servicing is required when the apparatus has been damaged in any way, such as power-supply cord or plug is damaged, liquid has been spilled or objects have fallen into the apparatus, the apparatus has been exposed to rain or moisture, does not operate normally, or has been dropped.
- To reduce the risk of electric shock, DO NOT remove cover or back panel. No user serviceable parts inside. Refer servicing to qualified personnel.

Important Safety Instructions (Continued)

- To help prevent electric shock, plug the power cable into properly grounded sources. Use only properly grounded extension cords and adaptors, if they are needed.
- The AC main plug is used as the disconnect device, the disconnect device shall remain readily operable.
- Make sure nothing is lying on any of the cables.
- Be sure the cables are located where they will not be stepped on or tripped over.
- Do not spill food or liquids onto the unit.
- Do not push any objects into the free slots. Doing so will damage the unit, can cause fire or electrical shock, and can short out interior components.
- Do not install near any heat sources such as radiators, heat registers, stoves, or other apparatus (including amplifiers) that produce heat.
- Do not block cooling vents.
- Do not place the equipment in a closed-in wall unit.
- When you disconnect a cable, pull on its connector or on its strain relief loop, not on the cable itself. Some cables have a connector with locking tabs; if you are disconnecting this type of cable, press in on the locking tabs before disconnecting the cables.
- When you connect a cable, make sure both connectors are correctly oriented and aligned before connecting to avoid bending connector pins.
- For PLUGGABLE EQUIPMENT, the socket-outlet should be installed near the equipment for easy access.
- Changes or modifications not expressly approved by the party responsible could void the user's authority to operate this device.

Operating Information

Operating Temperature: 0 °C (32 °F) to 45 °C (113 °F)

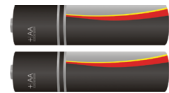
What's Included



Aria Media Receiver



IR Remote Control* (Optional)



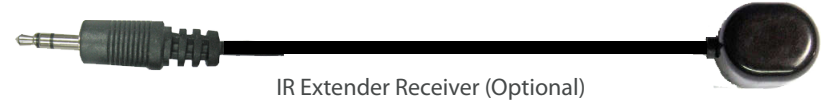
2 Batteries for Remote Control (Optional)



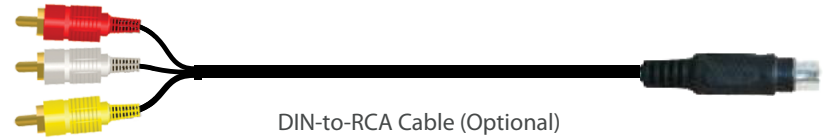
Aria Quick Start Guide



Remote Control Guide* (Optional)



IR Extender Receiver (Optional)



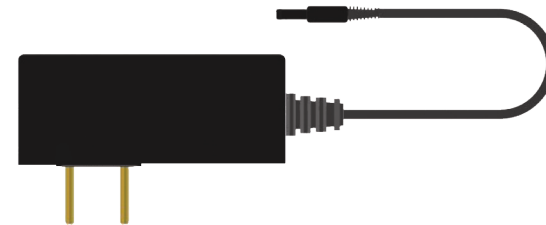
DIN-to-RCA Cable (Optional)



Ethernet Cable (Optional)



HDMI Cable (Optional)



AC Power Adapter*

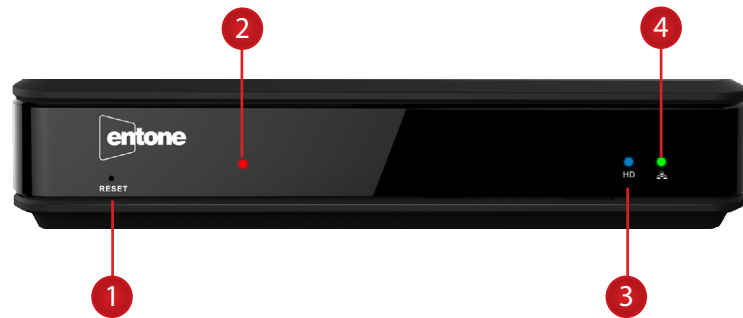
Additional items that may be required (not included):

- Ethernet Cable
- HDMI Cable
- RF Coaxial Cable
- Network Router

*The Remote Control may vary and is dependent on your service provider.

*The AC Power Adapter may vary and is dependent on your service provider.

Aria — Front Panel



Name	Description
1 Reset	Reset the device factory settings with a thin metal probe
2 Power Indicator	Solid red indicates the unit is on Flashing red indicates the unit is starting up
3 HD Indicator	Blue dot indicates current program is playing in HD (720p or higher) resolution
4 Link Indicator	Green dot indicates that Ethernet or Wi-Fi network connection is active

Availability of certain features is dependent on your service provider.

Aria — Rear Panel



Name	Description
1 Smart Card Port	For user with SIM format Smart Card Only.
2 Antenna/Cable Connector	IEC/F port for connecting to cable / antenna source
3 IR Extender Jack	To connect IR Extender Receiver
4 SD Video	9-Pin DIN conector for connecting to video output using DIN-to-RCA cable
5 HDMI	Digital video and audio port for connecting to a high-definition TV (HDTV)
6 Ethernet	RJ45 plug for connecting to ADSL modem or network access equipment
7 USB	To connect USB devices such as USB Flash Drive and External Hard Drive (max 500mA load)
8 Power	DC power jack (100-240V, Output 12V/2A)

Availability of certain features is dependent on your service provider.

STEP 1: CONNECTING VIDEO

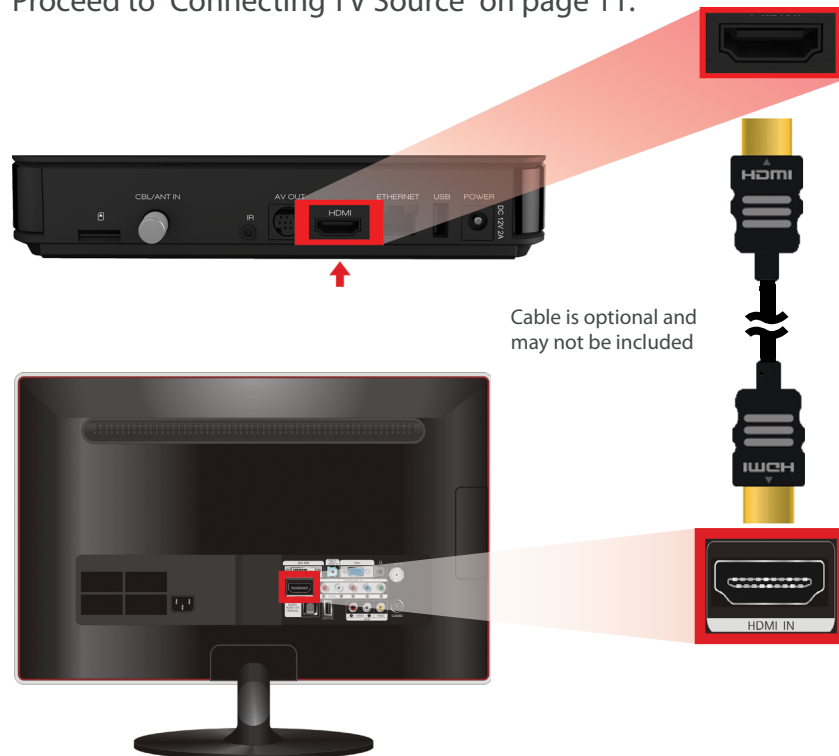
Aria provides two video options for connecting to your TV: HDMI and Composite Video.

Select a video option then proceed to Step 2.

Make sure your TV is turned on and the correct video input is selected.

Option 1: HDMI (Recommended)

If your TV has an HDMI connection, use an HDMI cable (may not be included) and connect Aria to the HDMI IN port on your TV. This connection provides both video and audio so you do not need a separate audio connection. Proceed to "Connecting TV Source" on page 11.



Option 2: Composite Video



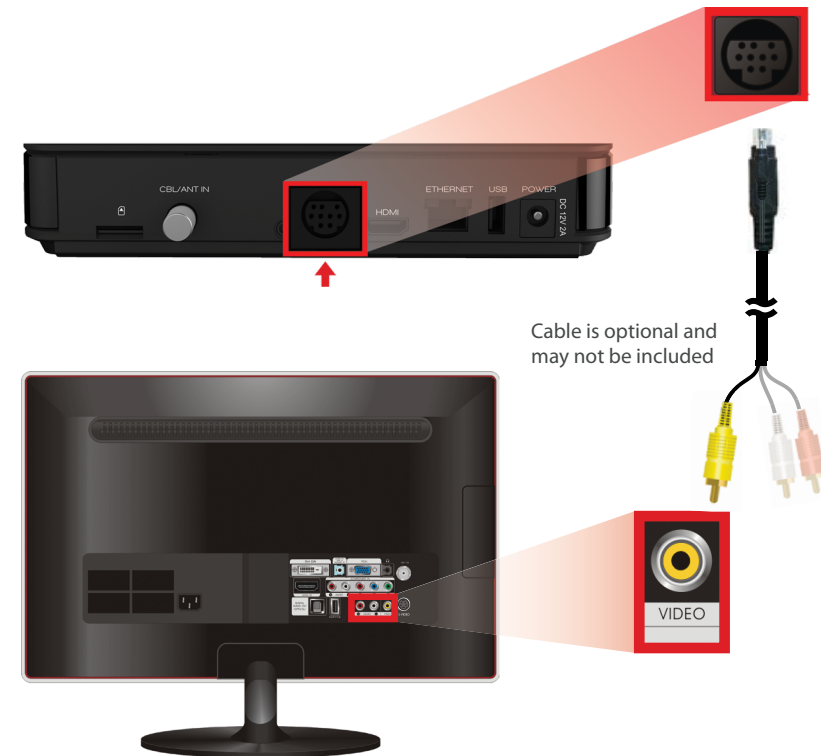
Composite Video

Delivers good picture quality

Use the DIN-to-RCA cable provided and connect the yellow cable to the yellow VIDEO IN port on your TV.

Then proceed to the next step ("Connecting Audio") to connect the red/white cables.

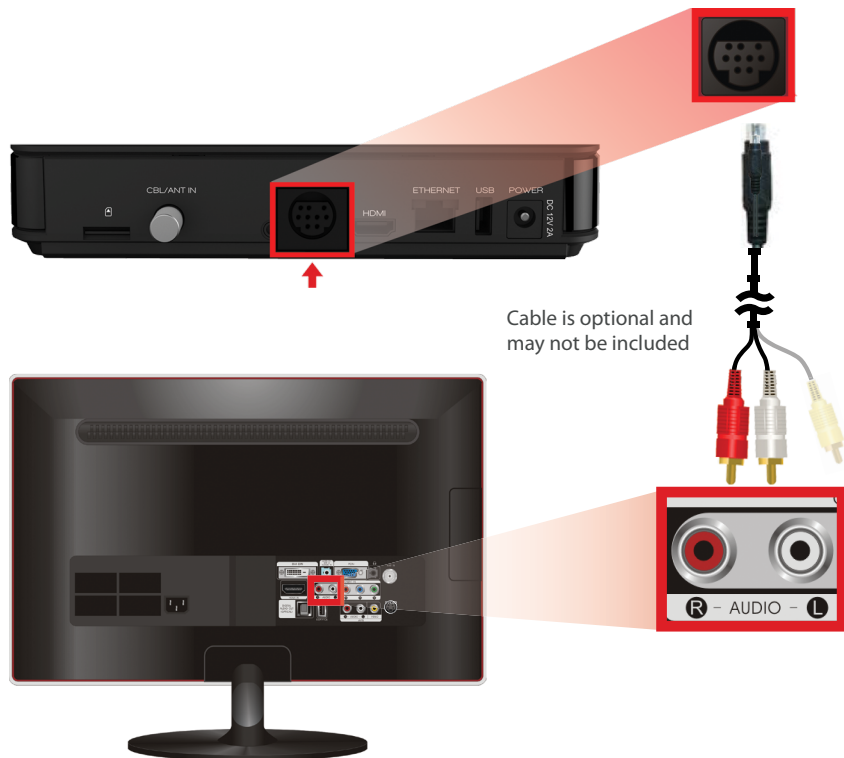
If you have already selected HDMI as your video connection, then do not use this cable.



STEP 2: CONNECTING AUDIO

NOTE: If you have already selected HDMI as your video connection, then skip this audio section and proceed to “Connecting TV Source” on page 11.

Use the Din-to-RCA cable provided and connect the to the Aria 9-Pin DIN connector and the red and white cables to the AUDIO IN port on your TV.



STEP 3: CONNECTING TV SOURCE (OPTIONAL)

You can connect an RF coaxial cable (sold separately) from Aria to either a Cable TV or antenna source. Select a TV source and proceed accordingly.

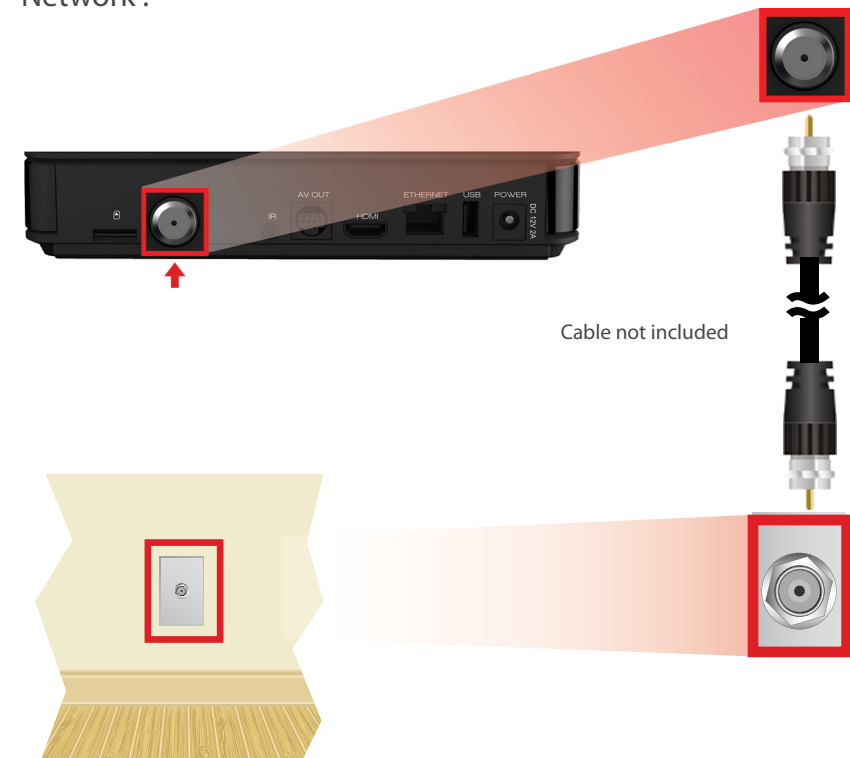
Option 1

Connect to basic unencrypted Cable TV Source

Option 2

Connect to Antenna Source (Outdoor or Indoor Antenna)

NOTE: Contact your service provider for more details. If you have not selected TV Source, then proceed to “Connecting Network”.



STEP 4: CONNECTING NETWORK

Select from one of the following networking options.

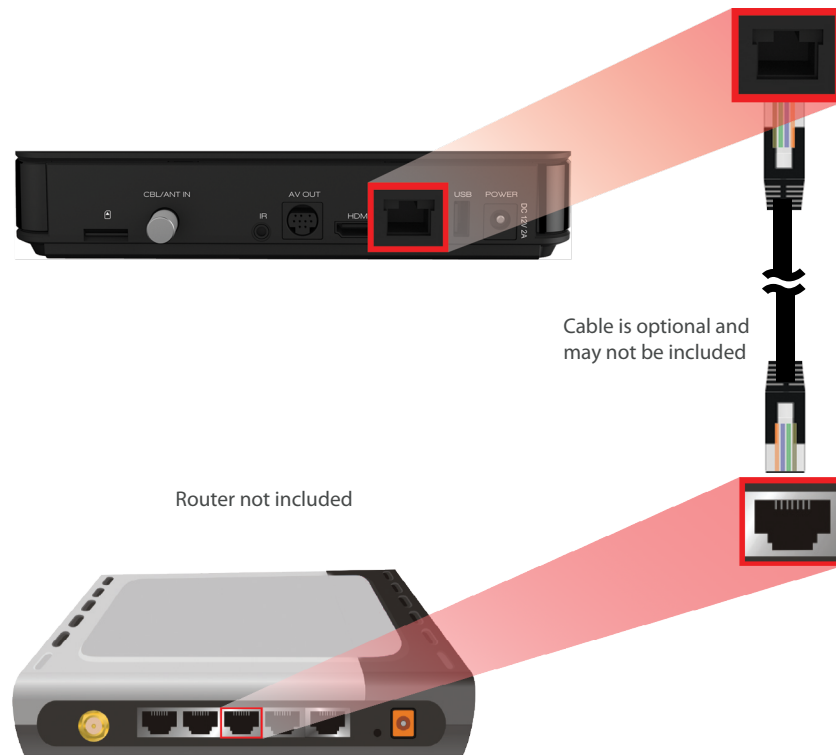
Option #1

Connect to a Wireless Network via a Wireless Network Router or Access Point

NOTE: Internal Wi-Fi is an optional feature for the Aria Media Receiver. Please contact your service provider for the availability and detailed instructions on the wireless network configuration.

Option #2

Connect to a Wired Network via DSL, Cable Modem or Network Router



STEP 5: POWERING UP

Setting Up Remote Control

1. Open the battery cover by pressing down on the battery cover latch and sliding it off.
2. Insert the batteries, matching the "+" and "-" marks on the batteries with the interior of the remote control.
3. Snap on the battery cover to close.

NOTE: Refer to the Remote Control Guide for more details about other remote control features.

Using IR Extender Receiver

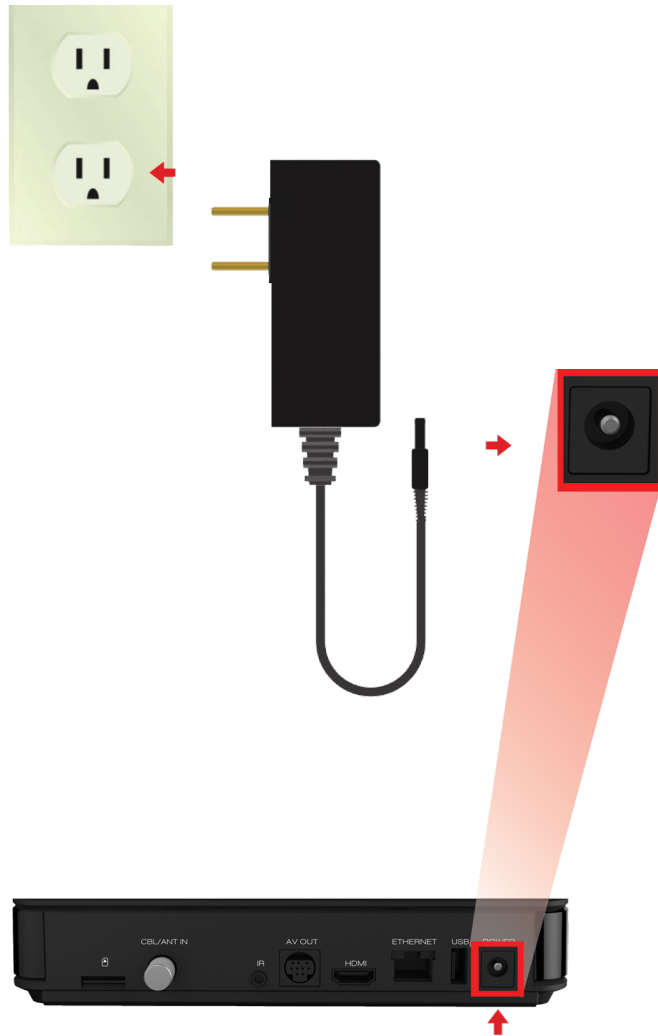
The remote control uses InfraRed (IR) light signals to control the Aria. IR signals cannot go through walls or other solid objects. If the line of sight of your Aria is blocked, then you can use the IR Extender Receiver provided to extend the reach of IR signals from the remote control.



Connecting to Power Source

1. Connect the power cord to the POWER port on the back of the Aria.
2. Plug the AC power adapter to a power outlet.
3. Follow the on-screen instructions.

NOTE: Make sure your TV is turned on and the correct video input is selected.





Declaration of Conformity

	To ensure proper use of this product, please read this manual carefully and retain it for future reference. Should the unit require maintenance, contact an authorized service location.
	WARNING: This symbol indicates the presence of uninsulated dangerous voltage within the product's enclosure that constitutes a risk of electric shock. Do not open the product's case.
	CAUTION: This symbol indicates you must take care; there is risk of damage to the equipment or to yourself.
	Declaration of Conformity (Europe Only) This product is in conformity with the Council Directives: <ul style="list-style-type: none"> • EMC Directive 2004/108/EC • Low voltage Directive 2006/95/EC
	Industry Canada statement: This device complies with RSS-210 of the Industry Canada Rules. Operation is subject to the following two conditions: (1) This device may not cause harmful interference, and (2) this device must accept any interference received, including interference that may cause undesired operation.
	Ce dispositif est conforme à la norme CNR-210 d'Industrie Canada applicable aux appareils radio exempts de licence. Son fonctionnement est sujet aux deux conditions suivantes: (1) le dispositif ne doit pas produire de brouillage préjudiciable, et (2) ce dispositif doit accepter tout brouillage reçu, y compris un brouillage susceptible de provoquer un fonctionnement indésirable.
	Radiation Exposure Statement: This equipment complies with IC radiation exposure limits set forth for an uncontrolled environment. This equipment should be installed and operated with minimum distance 20cm between the radiator & your body.
	Déclaration d'exposition aux radiations: Cet équipement est conforme aux limites d'exposition aux rayonnements IC établies pour un environnement non contrôlé. Cet équipement doit être installé et utilisé avec un minimum de 20 cm de distance entre la source de rayonnement et votre corps.

Declaration of Conformity (Continued)

Notes

	<p>To prevent fire or shock hazard, do not expose this product to rain or moisture. To reduce the risk of electric shock, DO NOT remove the cover or back. No user serviceable parts are inside. For servicing refer to qualified personnel.</p>
	<p>Declaration of Conformity (United States Only)</p> <p>This device complies with Part 15 of the FCC Rules. Operation is subject to the following conditions: (1) this device may not cause harmful interference, and (2) this device must accept any interference received, including interference that may cause undesired operation. This equipment has been tested and found to comply with the limits for a Class B digital device, pursuant to Part 15 of the Federal Communication Commission (FCC) Rules. These limits are designed to provide reasonable protection against harmful interference in a residential installation. This equipment generates, uses, and can radiate radio frequency energy, and if not installed and used in accordance with the instructions, may cause harmful interference to radio communications. However, there is no guarantee that interference will not occur in a particular installation. If this equipment does cause harmful interference to radio or television reception, which can be determined by turning the equipment OFF and ON, the user is encouraged to try to correct the interference by one or more of the following measures:</p> <ul style="list-style-type: none">• Reorient or relocate the receiving antenna.• Increase the separation between the equipment and the receiver.• Connect the equipment to a different circuit from that to which the receiver is connected.• Consult the dealer or an experienced radio/TV technician for help. <p>FCC Caution: Any changes or modifications not expressly approved by the party responsible for compliance could void the user's authority to operate this equipment.</p> <p>This transmitter must not be co-located or operating in conjunction with any other antenna or transmitter.</p> <p>Radiation Exposure Statement: This equipment complies with FCC radiation exposure limits set forth for an uncontrolled environment. This equipment should be installed and operated with minimum distance 20cm between the radiator & your body.</p>



©2015 Entone, Inc. Entone, Aria and connecting the home are trademarks of Entone, Inc. Other company, product, and service names may be trademarks or service marks of others. All information contained in this document is subject to change without notice. Information contained in this document is provided on an as is basis. In no event will Entone be liable for damages arising directly or indirectly from any use of the information contained in this document. Subject to change without notice.