

ENTTEC Wings

User Manual (revB hardware)



Box Contents

- ENTTEC Wing (70031, 70032 or 70033)
- 7V Power supply (79111)
- Country specific plug for power supply
- Cat5 patch cable (79102)
- Default IP address Label
- This user manual

Note: The user manual for all ENTTEC Wings is the same. Please refer to the section relating to that specific product.

Introduction

Each ENTTEC Wing supports two modes, and can only one mode can be active at a single time:

- **ENTTEC Mode:** Default mode, and is supported by software such as D-PRO and Lightfactory.
- **Art-Net Mode:** Each key can be mapped to an Art-Net channel and used as required.

Other software programs might support ENTTEC wings, and their operation as it relates to those software titles will be explained in full by those vendors.

After, un-packing the unit from the box, on the rear panel, you will find:

- **RJ45 Ethercon** connector for a 10Base-T Ethernet connection
- **Status Led** indicating if the device is powered up and running
- **Activity Led** indicating the presence of packets on the network

- **Link led** indicating the presence of an Ethernet connection
- **7V DC** power connector

The unit has no power switch and can be left on continuously.

Shortcut Wing Features

- Ethernet Interface
- 60 High quality Cherry MX Keys
- 2 Digit 7 Segment LED display
- PAGE UP & PAGE DOWN Keys
- Upgradeable firmware (using web-interface)

Playback Wing Features

- Ethernet Interface
- 40 High quality Cherry MX Keys
- 10 High Quality 60mm Faders
- 2 Digit 7 Segment LED display
- PAGE UP & PAGE DOWN Keys
- Large GO & BACK Keys
- Upgradeable firmware (using web-interface)

Program Wing Features

- Ethernet Interface
- 62 High quality Cherry MX Keys
 - PAGE UP & PAGE DOWN Keys for Encoder
 - 9 Window Keys

- 25 Operational & Function Keys
- 19 Key Numeric Keypad
- 4 Arrow Keys and Backspace
- 3 Rotary Encoders
- 4 line 20 character LCD Display
- Upgradeable firmware (using web-interface)

Safety

- Do not expose the ENTTEC Wing to rain or moisture, doing this will void the warranty
- Do not remove the cover, there are no serviceable parts inside
- This unit is intended for indoor use only

Basic Setup

- Connect the ENTTEC Wing to your network using the supplied or similar cat5 cable.
- Power up the Wing, the status and link LED should light up, and activity led should blink – indicating healthy network connection.
- ENTTEC Wing is factory configured with a Static IP address (as mentioned on label/packaging).
- Further changes to the configuration/settings can be made either using the web-interface, and/or using NMU App on Windows and OSX.
- Keep the Wing in ENTTEC mode, to use with supported software titles.
- The Wing should now be available to use in the supported software window. (For more details, please refer to the documentation of the relevant software).
- Key press and/or Fader movements should be mapped to your software, once it's configured properly.

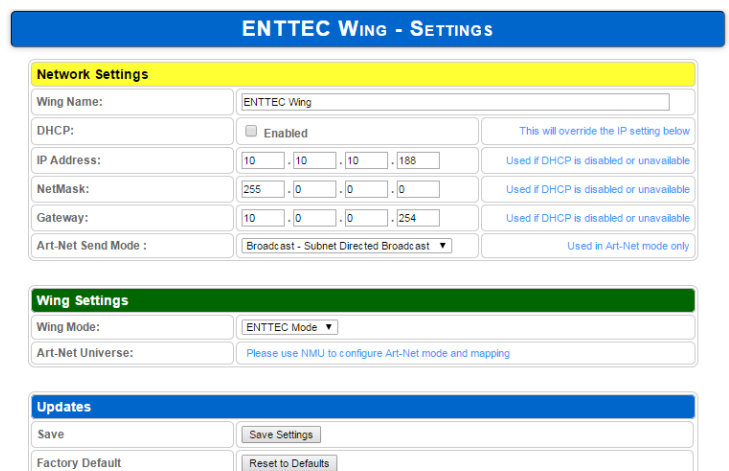
Web Interface

Using the web interface, one can change the network settings on the Wing and upgrade the firmware on the unit. The web interface is accessible from any modern web browser, by entering the IP address of the Wing.



Home: The Home page displays the Wing related information (Name, Type, Firmware) and the current network settings. For a quick reference an image of the Wing is shown at the bottom. (Playback Wing shown in the picture above)

Settings: Change Network Settings – enable DHCP or manually change the IP address as needed. Wing Mode can also be changed here. If Art-Net mode is enabled, please use NMU to configure the Wing further. Art-Net send mode can be used to specify where the Wing should send all Art-Net messages. (Broadcast is default)



To update the firmware on the Wing, please use “Update Firmware” page, and follow the steps given below.

Firmware Update

ENTTEC WING - UPDATE FIRMWARE

Current System Information

Boot Version:	ENTTEC Wing Mk2 Boot V1.2
Firmware Version:	ENTTEC Wing Mk2 Firmware V1.2
Mac Address:	00:05:0c:27:9a:fc
Serial No:	0c279afc
Link Speed:	100 Mbps

Current Network Settings

DHCP:	disabled
IP Address:	10.10.10.188

Update Firmware

Select firmware file: No file chosen

Update progress: Please do not interrupt while the firmware is being updated. Unit will restart once firmware update is complete.

From this page you can update the latest firmware of the ENTTEC Wing (firmware file is available at enttec.com/wing). All 3 types of Wing use the same firmware file.

Choose or browse the firmware file (as per your browser) and click on Update firmware to start the process.

Update Firmware

Select firmware file: firmware.bin

Update progress: **70%**

The update progress is shown in real-time, and will take a few seconds for the update to complete.

Update Firmware

Select firmware file: firmware.bin

Update progress: **90%**

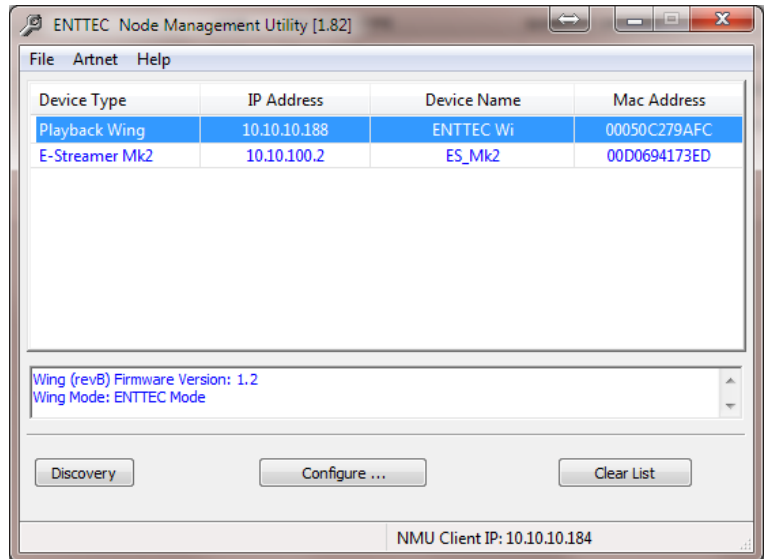
When the update is complete, the page will refresh and you will be taken to the home page – where you can verify the firmware version. If the update fails for any reason, please try the same process again.

Since, ENTTEC Wing will reboot after a firmware update, please allow a few seconds for it to be refreshed in the browser. Please wait until the update process is complete.

NMU

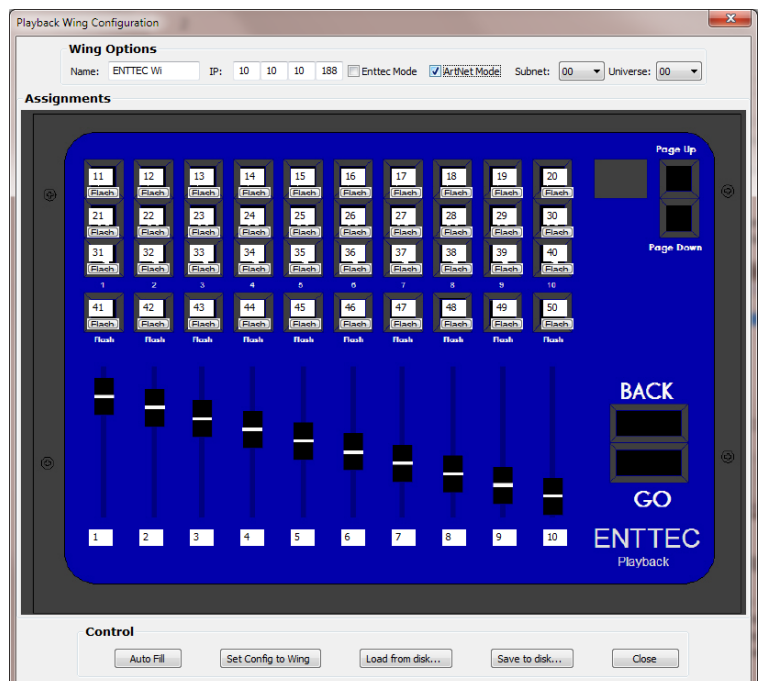
NMU (Node Management Utility) is a free Windows and Mac application that is used to manage compatible ENTTEC DMX over Ethernet nodes.

1. Download NMU from: enttec.com/nmu
2. Ensure that your ENTTEC Wing is hooked up physically by Ethernet cable, to your network.
3. Open NMU. If prompted with multiple networks, select the correct network. (Identified by the IP address of your computer on that network)



4. Press the Discovery button, and wait till NMU finds all supported ENTTEC devices on your network. Select the Wing and click Configure..

Art-Net Mode: Playback Wing



You will need to select the Subnet and Universe from the appropriate pulldowns in the Art-Net mode, which will tell the Wing which Art-Net universe of the 255 possible choices to use for the information it generates.

You can assign a total of 50 addresses to the 10 sliders and the 40 buttons. The buttons have the option to be set for Toggle or Flash, on a per button basis.

AUTOFILL: The Auto Fill button will return the assignments to the default configuration, shown above.

SET CONFIG TO WING: Saves the changed configuration to the Wing.

PAGE UP/DN: In addition to the 50 you have selected on the main screen, you have access to up to 450 other DMX addresses in the same Art-Net universe by pressing Page Up and Page Down buttons on the Wing.

In the example shown above, on Page 2, the sliders would correspond to channels 51-60.

EXCEEDING CHANNEL 512: Starting at higher than 62, you may run out of room on page 10 or even before. Such an arrangement would simply mean that on that page the button or slider does nothing.

Supported Software

ENTTEC Wings are supported by various software titles. Please refer to the respective software user-manual or online guide for more details on what functions are supported, and how to setup the Wings:

- D-PRO User Manual
enttec.com/pdf/manuals/70571.pdf
- LightFactory User Guide
[LightFactory2 User Guide.pdf](#)
- FreeStyler
www.freestylerdemx.be
- QLC+
qlcplus.sourceforge.net

Wing Specifications

Due to continuous improvements and innovations of all ENTTEC products, specifications and features are subject to change without notice.

Item	Value
Power Requirements	7-9V DC
Weight	6.6 lbs / 3.0 Kg
Length	13.4" / 340mm
Width	9.45" / 240mm
Height	1.26" / 32mm
Op Environment	0°-50°C
Connectors	1x RJ45 Ethercon connector

Ordering Information

The ENTTEC Wings and compatible products can be ordered from our website or through your ENTTEC dealer.

PN	Description
70031	Shortcut Wing
70032	Playback Wing
70033	Program Wing
70573	D-PRO 2U
70305	Open DMX Ethernet (ODE)

ENTTEC PTY LTD
17/5 Samantha Court
Knoxfield Victoria 3180
Australia
Tel: +61 3 9763 5755
Fax: +61 3 9763 5688

ENTTEC AMERICAS
604A Cornerstone Ct.
Hillsborough NC 27278
USA
Tel-Fax: (888) 454-5922

Email: sales@enttec.com
Website: www.enttec.com