

HSDPA USB Modem



User Guide
SDC-1000



Copyright

Epivalley Co., Ltd has the copyright for this manual.

This manual should not be reproduced or distributed with no prior written consent by Epivalley Co., Ltd.

Registered Trademark

The registered trademark stated in this manual is the registered trademark owned by the corresponding company.

Confidential & Proprietary

This manual is the technical property of Epivalley Co., Ltd and it is prohibited to copy or utilize the manual with no prior consent by the technical data department.

Table of Contents

Cautions for Safety	4	Connecting with PC	11
Introduction	5	Checkig Connection	12
Specific Features	5	Epivalley HSDPA Dialer	12
Configuration.....	6	Web	12
Condition for Use	6	SMS	13
Name of Each Part	7	Address	16
Installing Program	8	Setting	17
Deleting Program	9	Logs	18
Using USIM	10	Terminating Program	18
PIN Code	10	Trouble Shooting	19
PUK Code	10	Specification	20
Using SDC1000	11	Warranty	21
Running Program	11		

Cautions for Safety

The cautions for safety are the contents to keep the safety of users and to prevent possible loss in property or convenience caused by accidents. The product should properly be used after sufficient understanding of the contents.

Warning

- Do not discretionally disassemble, modify, or repair the product.
- Do not use the product if possible at the place where the use of handsets is prohibited.
- Use the product according to the rules and regulations of hospitals or medical institutions when using the product in such places.
- Do not use the product in the Airplane.
- Keep the product and accessories out of children's reach.
- Do not touch or use with wet hands.
- Do not use the product outside in the thundering or lightning weather.

Cautions

- Be careful not to give impact to the product and not to throw (or drop) the product because the product may be broken or deformed.
- When a trouble is occurred with the product, visit a designated service center to receive the service.
- Keep the USB port of the product clean always.
- The data to use the product is stored in USIM CARD; be careful to avoid possible damage to USIM CARD.
- Do not use or keep the product with magnetic storage media together.
- Do not use or keep the product at the very hot or very cold place or the place with large variation of temperature.
- If the model is disconnected from PC in switch-on status, the data may be damaged; disconnect the model from the PC after the programs are terminated and the power LED is turned off.
- When the product is used in connection with a notebook with use the battery only, the battery of the notebook may be somewhat rapidly discharged due to additional consumption of the power by the product.

Introduction

Thanks you for purchasing SDC1000 of Epivalley Co., Ltd.

SDC1000 is a USB Modem by **HSDPA** method to use wireless internet anytime and anywhere with no limit in time or place.

* **HSDPA** (High Speed Downlink Packet Access): This is the mobile communication method for sending/receiving data at the speed significantly faster than that of W-CDMA or CDMA.

Specific Features

* General Features

- USIM Support
- Internet, Intranet
- SMS
- Address
- Connection logs

* Data Rate

- Download: Up to 7.2 Mbps
- Upload: Up to 384 Kbps

* Mechanical Features

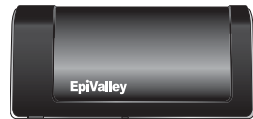
- Compatible microSD card
- Main Antenna
- UMTS Diversity Antenna (2100MHz)
- 7 Colors LED
- Dimension: 38mm(W) × 16mm(H) × 78mm(D)

* Frequency Band

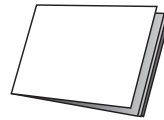
- GSM: 850 / 900 / 1800 / 1900 MHz
- UMTS: 850 / 1900 / 2100 MHz

Configuration

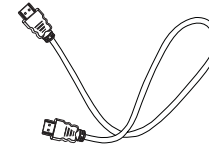
The configuration of SDC1000 product is as shown below:



Main Body



Manual



USB Extension Cable

* **Note:** The configuration of the product may be somewhat changed with no prior notice to improve the functions of the product.

Condition for Use

The minimum specification of the PC to use SDC1000 is as described below:

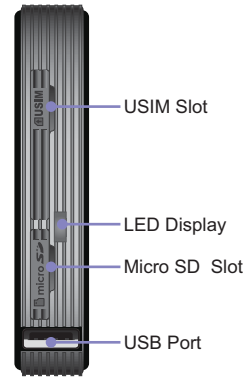
- Operating System: Windows® 2000, XP or Vista(32bit, 64bit), Mac® OS X
- CPU: Pentium 4, 1 GHz or above
- Memory: 128 MB RAM or above
- Hard disk space: 100 MB or above
- Connection port: USB slot A-Type

Name of Each Part

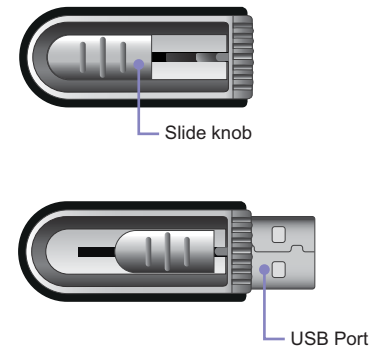
Front Part



Lateral Part



Lower Part



Installing Program

S/W is included in USB Modem.

1. When SDC1000 is inserted into the USB port of the PC to use SDC1000, the installation program is automatically run.

* **Note:** If SDC1000 Dialer program is already installed, the program is not automatically run.
If you want to reinstall the program, manually start the installation program with use of explorer.

2. When the installation is automatically started, below-shown screen is displayed. Choose the setup language and click [OK] button.



* **Note:** If the installation is not automatically run, doubleclick "setup32.exe" file in CD. (In case of Vista 64, setup64.exe)

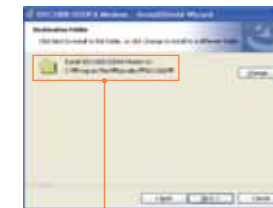
3. To install the program, files are copied from Modem to PC.



4. When "Welcome to the Installshield Wizard" message is displayed, click [Next] button.



5. Designate the destination folder to install the program and click [Next] button.



Destination folder of the program

6. Click [Install] button to install the program.



Deleting Program

7. Files are copied from Modem to PC.



8. Program is completely installed. Click [Finish] button to finish the program installation.



The method to delete Epivalley HSDPA Dialer installed in PC is as described below.

1. On the task bar, click [Start] - [Program] - [Epivalley] - [SDC1000_Dialer] - [Uninstall] in order.



2. When a popup screen is displayed and it is asked whether to delete the program, click [Yes] button.



Using USIM

USIM (universal subscriber identity module) consists of SIM (subscriber identity module) containing subscribers' information and UICC (universal IC card) and various functions including user authentication, global roaming, and e-commerce are performed with a card.

For proper use of SDC1000, USIM Card should be inserted.



PIN Code

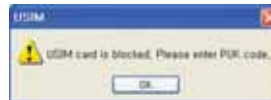
PIN Code is the password to be inputted for confirmation when running the program to use SDC1000.

(If PIN Lock Option is in [ON] status, you should input the password when starting Epivalley HSDPA Dialer program.)



Carefully input the password and click [OK] button; if valid password is inputted, Epivalley HSDPA Dialer program is properly run and, if invalid PIN Code is inputted, an error message is displayed as shown below.

* **Note:** If invalid PIN Code is inputted three or more times, USIM Card is blocked and cannot be used.



Blocked USIM Card may be released with input of PUK Code.

PUK Code

PUK Code is a pre-defined code to release blocked USIM Card.

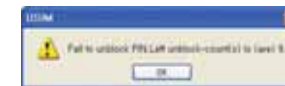


Input PUK Code and new PIN Code and click [OK] button to release blocked USIM Card.



* **Note:** PUK Code may be identified in USIM Pack when purchasing USIM and consists of 8-digit numbers.

If invalid PUK Code is inputted, an error message is displayed. In this case, click [OK] button and input valid PUK Code and new PIN Code to release blocking.



* **Note:** Be careful because, if you fail in inputting valid PUK Code 10 or more times, USIM Card is blocked and cannot be used. (You have to purchase USIM Card again.)

Using SDC1000

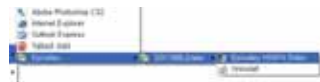
Running Program

Run Epivalley HSDPA Dialer program be below-described method.

1. Doubleclick the shortcut icon (Epivalley HSDPA Dialer) on the window.



Or on the task bar, click [Start] - [Program] - [Epivalley] - [SDC1000_Dialer] - [Epivalley HSDPA Dialer] in order.

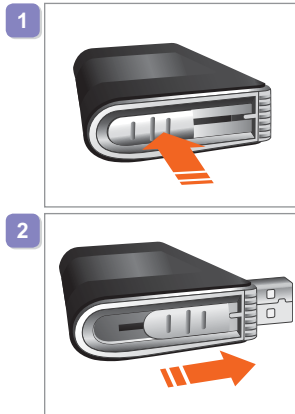


2. Epivalley HSDPA Dialer program is run.



Connecting with PC

The USB Port of SDC1000 is built in the main body. Pull out the USB Port and connect it with PC.



Check whether LED part is lighted on.



* **Note:** When SDC1000 is not used, remove it from PC and push USB Port inside to be stored.

* **Note:** When SDC1000 is used connecting with a notebook, the receive sensitivity may be reduced due to the electronic wave generated by LCD monitor. In this case, use it using the USB extensible cable supplied when purchasing the product.

Using SDC1000

Checkig Connection

When SDC1000 is connected with PC, the connection status may be confirmed on the status display bar at the lowest part of the program.



When SDC1000 is properly connected



When SDC1000 is not connected



When SDC1000 is connected but USIM Card is not inserted or is improperly inserted

This status of product may also be checked on the LED at the side of SDC1000.

RED	Power On Blink: No service
Yellow GREEN	In service Blink: Receiving SMS
Orange	No SIM

Epivalley HSDPA Dialer

Connection with internet or sending/receiving SMS is possible with use of Epivalley HSDPA Dialer program and the telephone numbers and addresses may conveniently be managed in the address list.

■ Web

[Web] is the menu used in connecting with internet. When using [Web] for the first time, the profile needed to connect with internet should be created and, from the next use, internet connection is possible with use of the stored profile.

1. Click [Web].

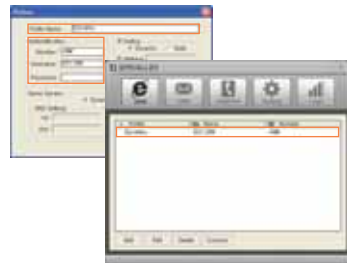


2. Create the profile needed to connect with internet. Click [Add] or click the right button of mouse and select [Add] button.

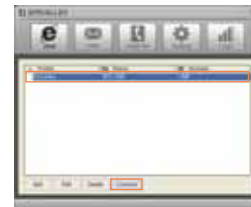
Using SDC1000



3. Input Profile Name to create the profile for internet connection and input the information needed to connect with profile. Click [OK] button to create a profile.



4. Select the profile created for internet connection and click [Connect] button.



5. Internet is connected and the time of internet use and packets may be checked.



■ SMS

[SMS] is the menu that is used in sending short messages or confirming received short messages.

Short messages may be sent with setting the sending time and the short messages received from numbers for rejection are automatically classified into spam messages.

• Send

1. Click [SMS] button.



Using SDC1000

2. Write the message on Editor screen.



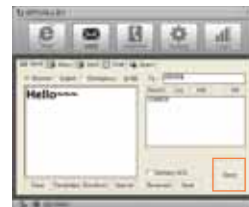
- Clear: erase the message written on Editor screen.
- Templates: designates the templates of message
- Emoticon: inputs emoticon.
- Special: inputs special characters.

3. Input the telephone number to receive the message and click [Add] button to designate the number as the receiver's number. The telephone number may be added by selecting a number in the numbers registered in the address or may be designated by selecting a number in the message sending history after clicking [Log] button.



- Wrong designated receiver's number may be deleted by selecting the receiving number in the telephone number list and by clicking [Del] button.
- To send a messages with reservation, click [Reserved] button designate the time and date to send the messages.

4. Click [Send] button the send the message.



• Inbox

In [Inbox] tab, you can see the received messages.

Received messages are automatically stored in Inbox.

When a message is received, the receipt is noticed on the Windows popup screen and, if the program is minimized, the tray icon flashes.

The messages may be arranged by Date, Number, Content, Destination, and Message Status; the message may be relayed with clicking [Forward] button and a reply message may be sent with clicking [Reply] button.



* **Note:** The method to notice the receipt of a message may be set in [Incoming SMS Alert] in [Setting] menu.

Using SDC1000

• Sent

In [Sent] tab, you can check the messages sent.

The messages may be arranged by Date, Number, Content, Destination, and Message Status and the message may be relayed with clicking [Forward] button. Also, the destination (PC or USIM) where the messages are stored may be confirmed with the icon.



* **Note:** Click [Save] button to store the telephone number to which the message was sent or change the destination to store the message.

• Draft

In [Draft] tab, you can check the reserved messages, the messages not sent, and the messages failed in sending.

The messages may be arranged by Date, Number, Content, Destination, and Message Status and the message may be relayed with clicking [Forward] button.



* **Note:** Click [Resend] button to send the selected message again.

• Spam

In [Spam] tab, you can check the messages received from the telephone numbers designated as Spam and the messages containing the words designated as Spam.

The messages may be arranged by Date, Number, Content, Destination, and Message Status and the message may be stored with clicking [Save] button.



* **Note**

- Click [Inbox] button to move or resend the selected message.
- You can define the Spam messages in [Spam message Settings] in [Setting] menu.

Using SDC1000

■ Address

[Address] menu is used to register, edit, and delete telephone numbers.

• Viewing Registered Telephone Numbers

You can check the stored telephone numbers with selecting All, PC, or SIM tab and you can view the registered telephone numbers in the arrangement by Name, Mobile, Address, Office, Home, Fax, E-mail, and Comments.



• Searching Telephone Numbers

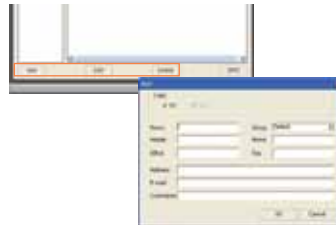
You can search the registered telephone numbers with selecting the search type (Name, Mobile, Group, Address, Office, Home, Fax, E-mail, and Comments), in-

putting the search condition, and clicking [Search] button.



• Registration, Correction, and Deletion of Telephone Numbers

You can register a new telephone number or correct or delete registered telephone numbers with use of the button at the lowest part of Address Menu.



- Add: registers a new telephone number in the telephone book.
- Edit: may correct the information on the registered telephone number.
- Delete: deletes the registered telephones from the telephone book.

• Sending Short Messages

You can send a message to the registered telephone numbers with clicking [SMS] button at the lowest part of Address Menu. Check the telephone numbers to send the message and click [SMS] button.



• Managing Telephone Number Groups

Telephone numbers may conveniently be managed with classification into groups. A group may be created with clicking the right button of mouse and clicking [Add] button.

You can move the registered telephone numbers to another group with Drag &

Using SDC1000

Drop and send a message to a group or groups at a time.



Also, you can move or copy the registered telephone number by selecting the number and clicking the right button of mouse.



■ Setting

In [Setting] menu, you can set the environment related with the use of Epivalley HSDPA Dialer program.



• General

In [General] tab, you can set the information on the language and color theme related with Windows.



• SMS

In [SMS] tab, you can set the information on notice of message receipt and Spam message management.



• USIM

In [USIM] tab, you can set the information related with PIN Code.



Using SDC1000

• Lock

In [Lock] tab, you can set the information related with lock function.



• Information

In [Information] tab, you can check the information related with S/W Version, Modem, and Memory.



■ Logs

In [Logs], you can check the information on the date and time of internet connection and the quantities of sent/received data in relation to use of internet.



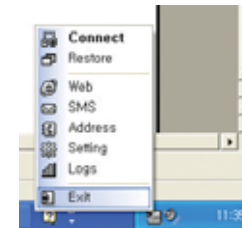
- Prev: confirms the internet logs of previous month.
- Next: confirms the internet logs of next month.
- Export: The internet logs of current month are downloaded in csv file type.

Terminating Program

To terminate Epivalley HSDPA Dialer program, click at the right top of the program.



Or click the right button of mouse on the tray icon and click [Exit] button.



Trouble Shooting

If you inform the expected problems and solutions in relation to the use of SDC 1000, the troubleshooting will be prepared with referring to the related contents of other models.

Specification

Specification will be prepared after confirming the final specification.

Warranty

Let use be informed of the warranty policy of Epivalley.



CE User Information

Hereby, Epivalley co., LTD. declares that this SDC-1000 is in compliance with the essential requirements and other relevant provisions of Directive1999/5/EC.

FCC RF EXPOSURE INFORMATION

This USB modem is approved for use in normal size laptop computers only (typically with 12” or larger display screens). To comply with FCC RF exposure requirements, this modem should not be used in configurations that cannot maintain at least 12 mm from users and bystanders; for example, in certain laptop and tablet computers and configurations where the USB connectors are unable to provide or ensure the necessary separation is available between the modem and its users to satisfy compliance.

The FCC has granted an Equipment Authorization for this HSDPA USB MODEM with all reported SAR levels evaluated as in compliance with the FCC RF exposure guidelines. SAR information on this USB modem is on file with the FCC and can be found under the Display Grant section of [http://www.fcc.gov /oet / fcc id](http://www.fcc.gov/oet/fccid) after searching on **FCC ID: R2NSDC-1000**

For more information about RF exposure, please visit the FCC website at www.fcc.gov

WARNING! Read this information before use

Caution

Modifications not expressly approved by the party responsible for compliance could void the user’s authority to operate the equipment.

FCC Compliance Information

This device complies with Part 15 of FCC Rules. Operation is subject to the following two conditions: (1) This device may not cause harmful interference, and (2) This device must accept any interference received. Including interference that may cause undesired operation.

Information to User

This equipment has been tested and found to comply with the limits for a Class B digital device, pursuant to part 15 of the FCC Rules. These limits are designed to provide reasonable protection against harmful interference in a residential installation. This equipment generates, uses and can radiate radio frequency energy and, if not installed and used in accordance with the instructions, may cause harmful interference to radio communications. However, there is no guarantee that interference will not occur in a particular installation. If this equipment does cause harmful interference to radio or television reception, which can be determined by turning the equipment off and on, the user is encouraged to try to correct the interference by one or more of the following measures:

- Reorient or relocate the receiving antenna.- Increase the separation between the equipment and receiver.
- Connect the equipment into an outlet on a circuit different from that to which the receiver is connected.
- Consult the dealer or an experienced radio/ tv technician for help.