

HSDPA USB Modem

SDT1100
User Guide



Copyright

Epivalley Co., Ltd has the copyright for this manual.

This manual should not be reproduced or distributed with no prior written consent by Epivalley Co., Ltd.

Registered Trademark

The registered trademark stated in this manual is the registered trademark owned by the corresponding company.

Confidential & Proprietary

This manual is the technical property of Epivalley Co., Ltd and it is prohibited to copy or utilize the manual with no prior consent by the technical data department.

Table of Contents

Cautions for Safety	5
Introduction	7
Specific Features	7
Configuration	8
Condition for Use.....	8
Name of Each Part	9
Installing Program	10
Deleting Program	14
Using USIM	15
PIN Code.....	16
PUK Code	17
Using SDT1100.....	18
Running Program	18
Connecting with PC	19
Checkig Connection	20
Epivalley HSDPA Dialer	21
Web.....	21
SMS.....	24
Address.....	30
Setting.....	34
Logs	37
Terminating Program	38
Trouble Shooting	39
Specification	40
Warranty	41

Cautions for Safety

The cautions for safety are the contents to keep the safety of users and to prevent possible loss in property or convenience caused by accidents. The product should properly be used after sufficient understanding of the contents.

Warning

- Do not discretionally disassemble, modify, or repair the product.
- Do not use the product if possible at the place where the use of handsets is prohibited.
- Use the product according to the rules and regulations of hospitals or medical institutions when using the product in such places.
- Do not use the product in the Airplane.
- Keep the product and accessories out of children's reach.
- Do not touch or use with wet hands.
- Do not use the product outside in the thundering or lightning weather.

Cautions

- Be careful not to give impact to the product and not to throw (or drop) the product because the product may be broken or deformed.
- When a trouble is occurred with the product, visit a designated service center to receive the service.
- Keep the USB port of the product clean always.
- The data to use the product is stored in USIM CARD; be careful to avoid possible damage to USIM CARD.
- Do not use or keep the product with magnetic storage media together.
- Do not use or keep the product at the very hot or very cold place or the place with large variation of temperature.
- If the model is disconnected from PC in switch-on status, the data may be damaged; disconnect the model from the PC after the programs are terminated and the power LED is turned off.

- When the product is used in connection with a notebook with use the battery only, the battery of the notebook may be somewhat rapidly discharged due to additional consumption of the power by the product.

Introduction

Thanks you for purchasing SDT1100 of Epivalley Co., Ltd.

SDT1100 is a USB Modem by *HSDPA* method to use wireless internet anytime and anywhere with no limit in time or place.

* *HSDPA (High Speed Downlink Packet Access): This is the mobile communication method for sending/receiving data at the speed significantly faster than that of W-CDMA or CDMA.*

Specific Features

* General Features

- USIM Support
- Internet, Intranet
- SMS
- Address
- Connection logs

* Mechanical Features

- Compatible microSD card
- Main Antenna
- UMTS Diversity Antenna (2100MHz)
- 7 Colors LED
- Dimension: 38mm(W) × 16mm(H) × 78mm(D)

* Data Rate

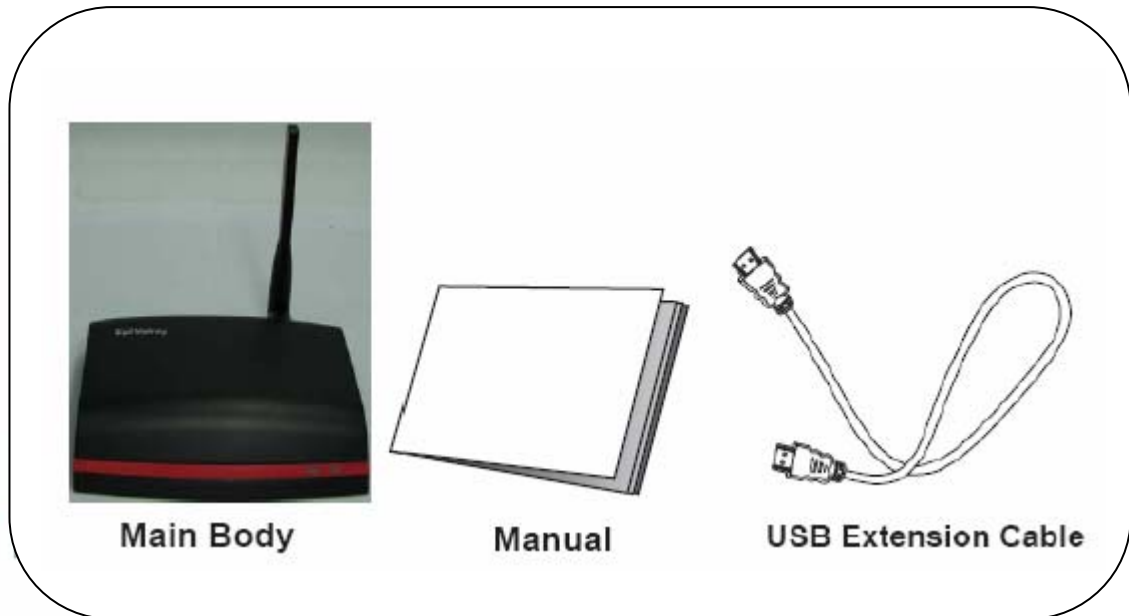
- Download: Up to 7.2 Mbps
- Upload: Up to 384 Kbps

* Frequency Band

- GSM: 850 / 900 / 1800 / 1900 MHz
- UMTS: 850 / 1900 / 2100 MHz

Configuration

The configuration of SDT1100 product is as shown below:



The configuration of the product may be somewhat changed with no prior notice to improve the functions of the product.

Condition for Use

The minimum specification of the PC to use SDT1100 is as described below:

- Operating System: Windows® 2000, XP or Vista(32bit, 64bit), Mac® OS X
- CPU: Pentium 4, 1 GHz or above
- Memory: 128 MB RAM or above
- Hard disk space: 100 MB or above
- Connection port: USB slot A-Type

Name of Each Part

Front Part



LED Display

Lateral Part



USIM Slot

Lower Part



USB Port

RJ11 Port

DC POWER Port

Installing Program

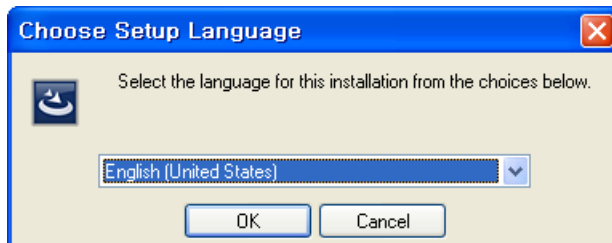
S/W is included in USB Modem.

1. When SDT1100 is inserted into the USB port of the PC to use SDT1100, the installation program is automatically run.

Note: If SDT1100 Dialer program is already installed, the program is not automatically run.

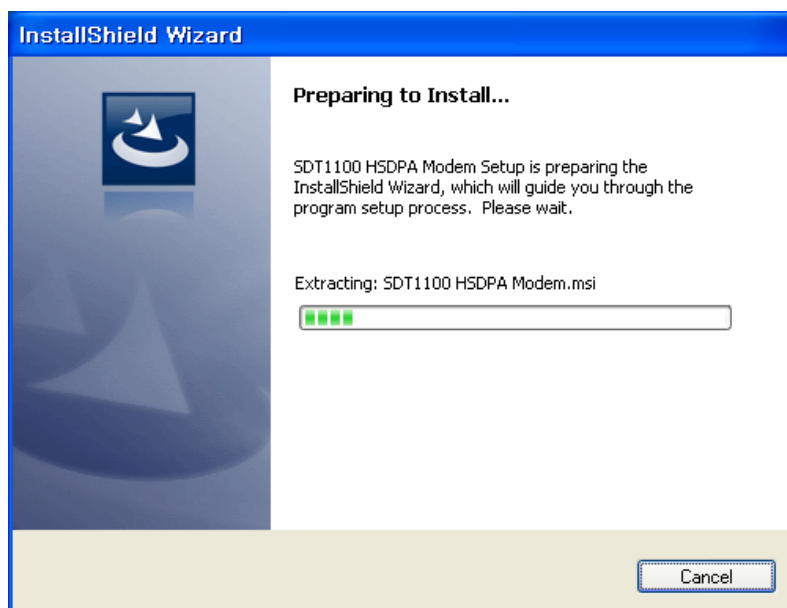
If you want to reinstall the program, manually start the installation program with use of explorer.

2. When the installation is automatically started, below-shown screen is displayed. Choose the setup language and click [OK] button.



Note: If the installation is not automatically run, doubleclick "setup32.exe" file in CD. (In case of Vista 64, setup64.exe)

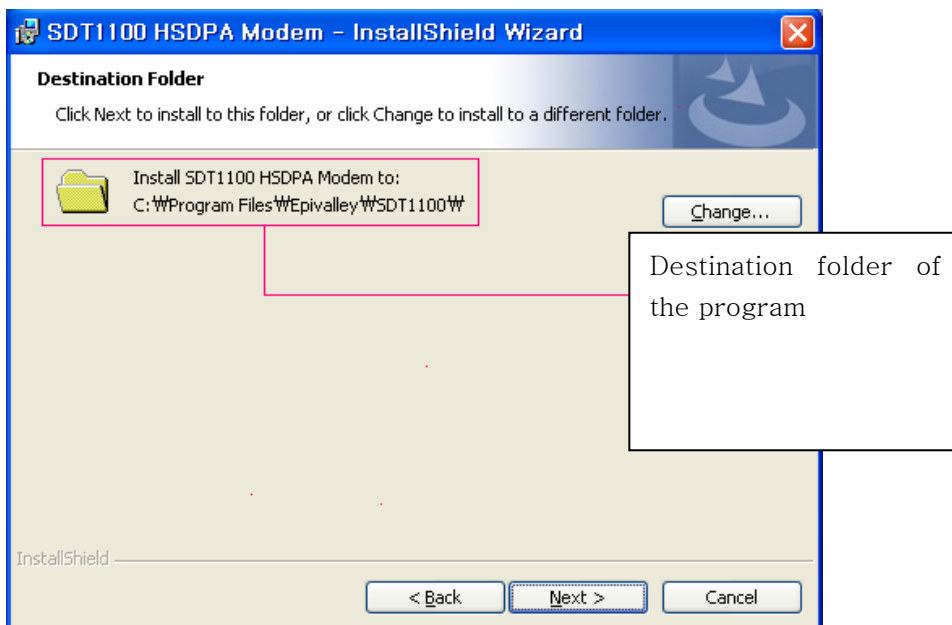
3. To install the program, files are copied from Modem to PC.



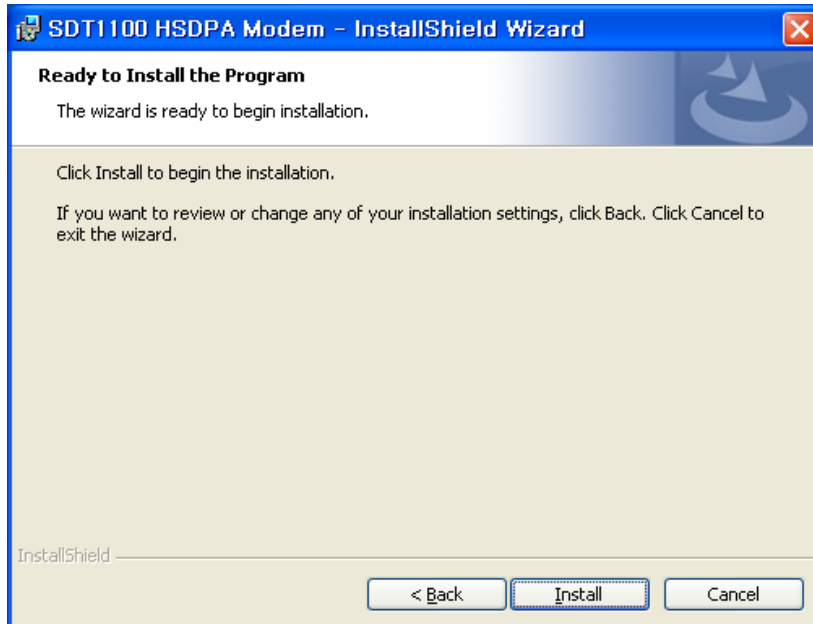
4. When “Welcome to the InstallShield Wizard” message is displayed, click [Next] button.



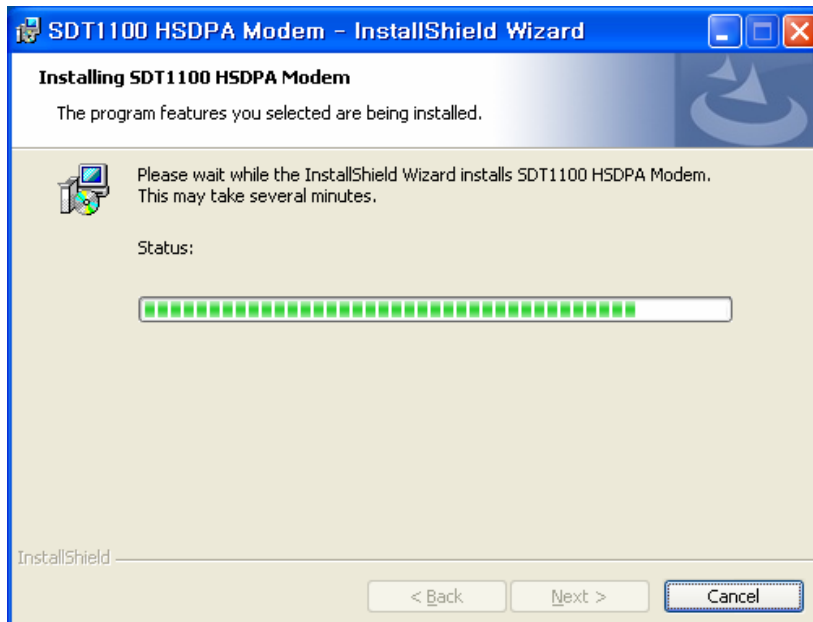
5. Designate the destination folder to install the program and click [Next] button.



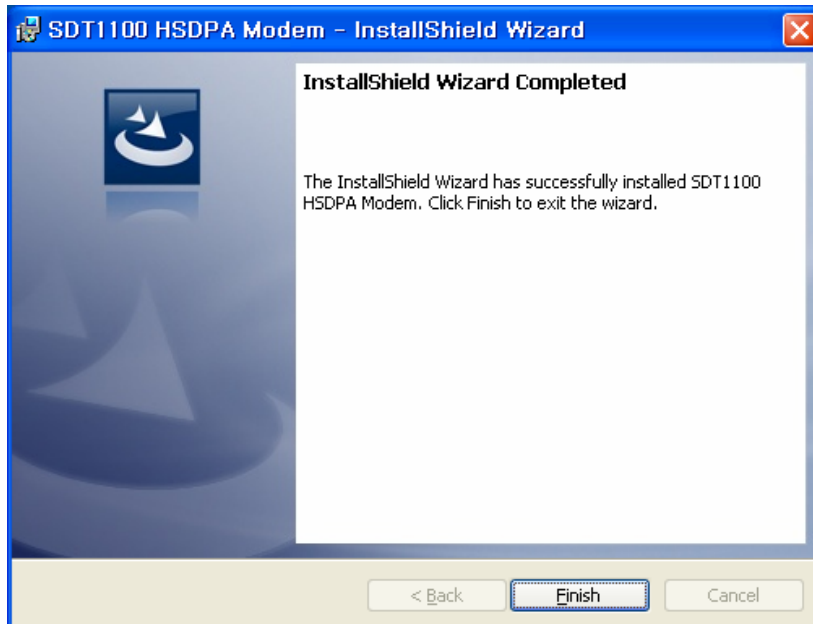
6. Click [Install] button to install the program.



7. Files are copied from Modem to PC.



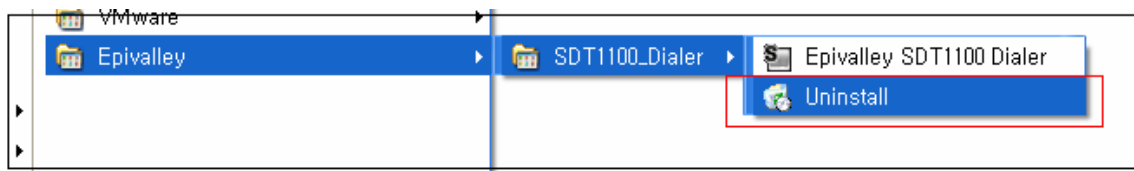
8. Program is completely installed. Click [Finish] button to finish the program installation.



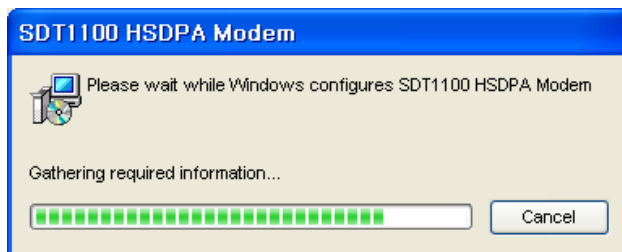
Deleting Program

The method to delete Epivalley HSDPA Dialer installed in PC is as described below.

1. On the task bar, click [Start] – [Program] – [Epivalley] – [SDT1100_Dialer] – [Uninstall] in order.



2. When a popup screen is displayed and it is asked whether to delete the program, click [Yes] button.



Using USIM

USIM (universal subscriber identity module) consists of SIM (subscriber identity module) containing subscribers' information and UICC (universal IC card) and various functions including user authentication, global roaming, and e-commerce are performed with a card.

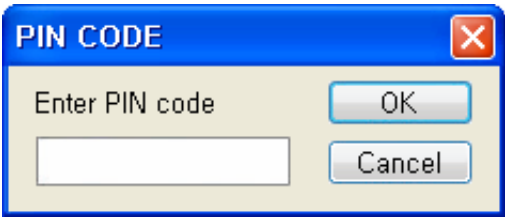
For proper use of SDT1100, USIM Card should be inserted.



PIN Code

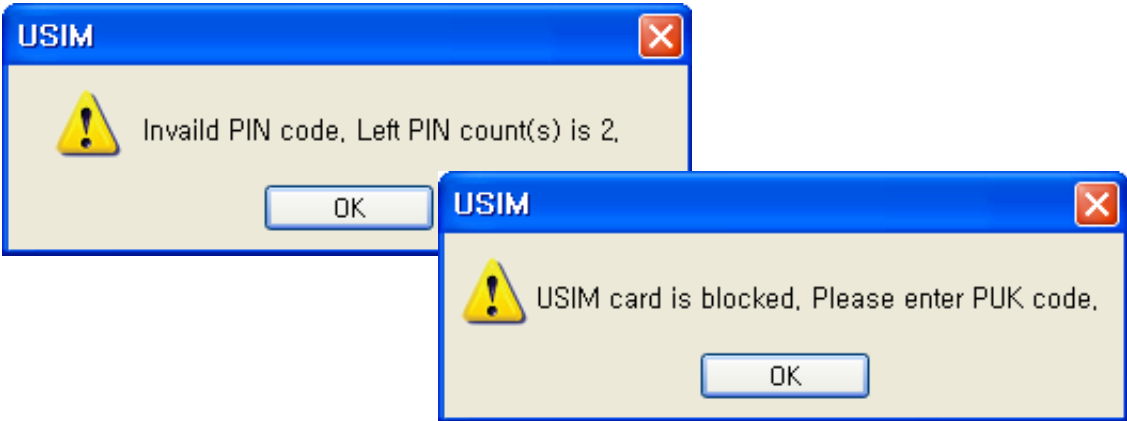
PIN Code is the password to be inputted for confirmation when running the program to use SDT1100.

(If PIN Lock Option is in [ON] status, you should input the password when starting Epivalley HSDPA Dialer program.)



Carefully input the password and click [OK] button; if valid password is inputted, Epivalley HSDPA Dialer program is properly run and, if invalid PIN Code is inputted, an error message is displayed as shown below.

Note: If invalid PIN Code is inputted three or more times, USIM Card is blocked and cannot be used.



Blocked USIM Card may be released with input of PUK Code.

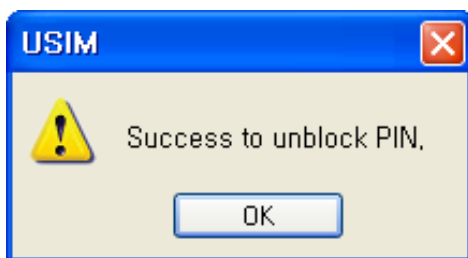
PUK Code

PUK Code is a pre-defined code to release blocked USIM Card.



The screenshot shows a dialog box titled "PUK CODE" with a close button (X) in the top right corner. The main text inside the dialog reads "Please enter PUK code and new PIN code". Below this text, there are two input fields: "PUK code" and "New PIN code". To the right of the "PUK code" field is an "OK" button, and to the right of the "New PIN code" field is a "Cancel" button.

Input PUK Code and new PIN Code and click [OK] button to release blocked USIM Card.



Note: PUK Code may be identified in **USIM Pack when purchasing USIM** and consists of 8-digit numbers.

If invalid PUK Code is inputted, an error message is displayed. In this case, click [OK] button and input valid PUK Code and new PIN Code to release blocking.



Note: Be careful because, if you fail in inputting valid PUK Code 10 or more times, USIM Card is blocked and cannot be used. (You have to purchase USIM Card again.)

Using SDT1100

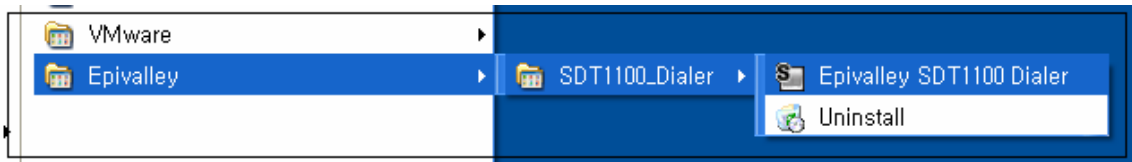
Running Program

Run Epivalley HSDPA Dialer program by the below-described method.

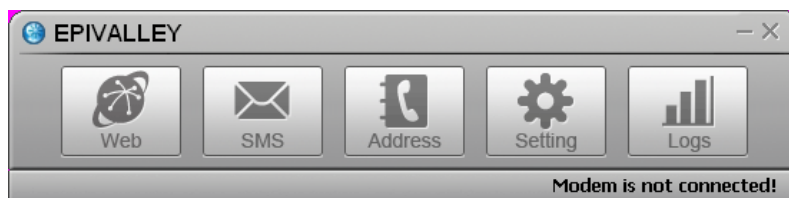
1. 1. Doubleclick the shortcut icon (Epivalley HSDPA Dialer) on the window.



Or on the task bar, click [Start] – [Program] – [Epivalley] – [SDT1100_Dialer] – [Epivalley HSDPA Dialer] in order.



2. Epivalley HSDPA Dialer program is run.



Connecting with PC

The USB Port of SDT1100 is built in the main body. Pull out the USB Port and connect it with PC.



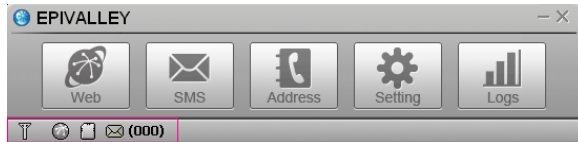
Check whether LED part is lighted on.

Note: When SDT1100 is not used, remove it from PC and push USB Port inside to be stored.

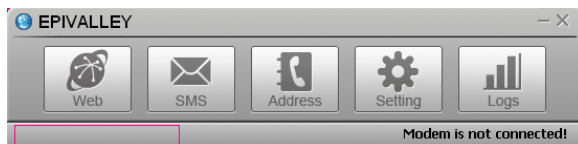
Note: When SDT1100 is used connecting with a notebook, the receive sensitivity may be reduced due to the electronic wave generated by LCD monitor. In this case, use it using the USB extensible cable supplied when purchasing the product.

Checkig Connection

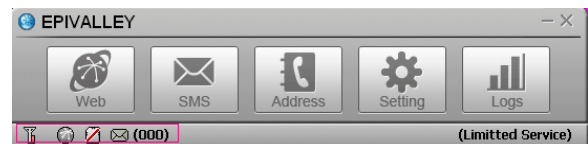
When SDT1100 is connected with PC, the connection status may be confirmed on the status display bar at the lowest part of the program.



When SDT1100 is properly



When SDT1100 is not connected



When SDT1100 is connected but USIM Card is not inserted or is improperly inserted

This status of product may also be checked on the LED at the side of SDT1100 .

1. **RED:** Power On
Blink: No service
2. **Yellow GREEN:** In service,
Blink: Receiving SMS
3. **Orange:** No SIM

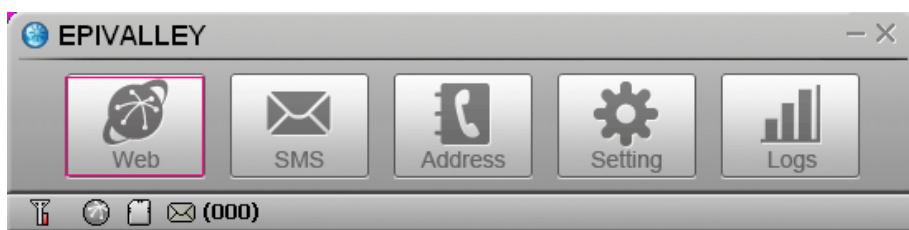
Epivalley HSDPA Dialer

Connection with internet or sending/receiving SMS is possible with use of Epivalley HSDPA Dialer program and the telephone numbers and addresses may conveniently be managed in the address list.

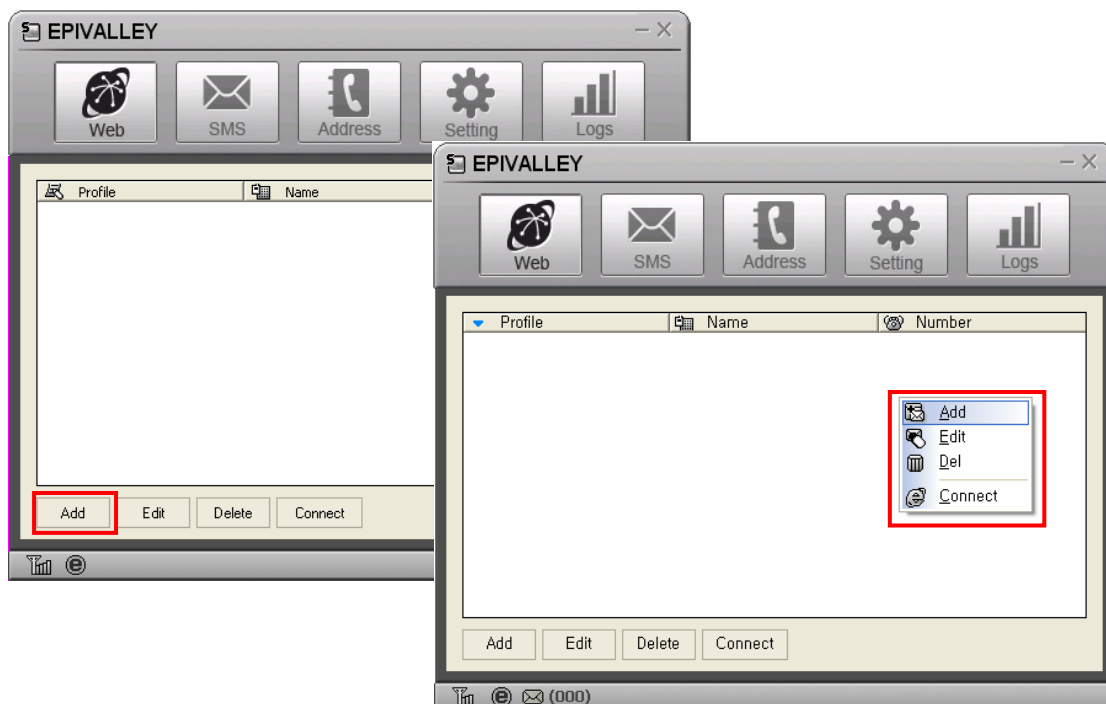
Web

[Web] is the menu used in connecting with internet. When using [Web] for the first time, the profile needed to connect with internet should be created and, from the next use, internet connection is possible with use of the stored profile.

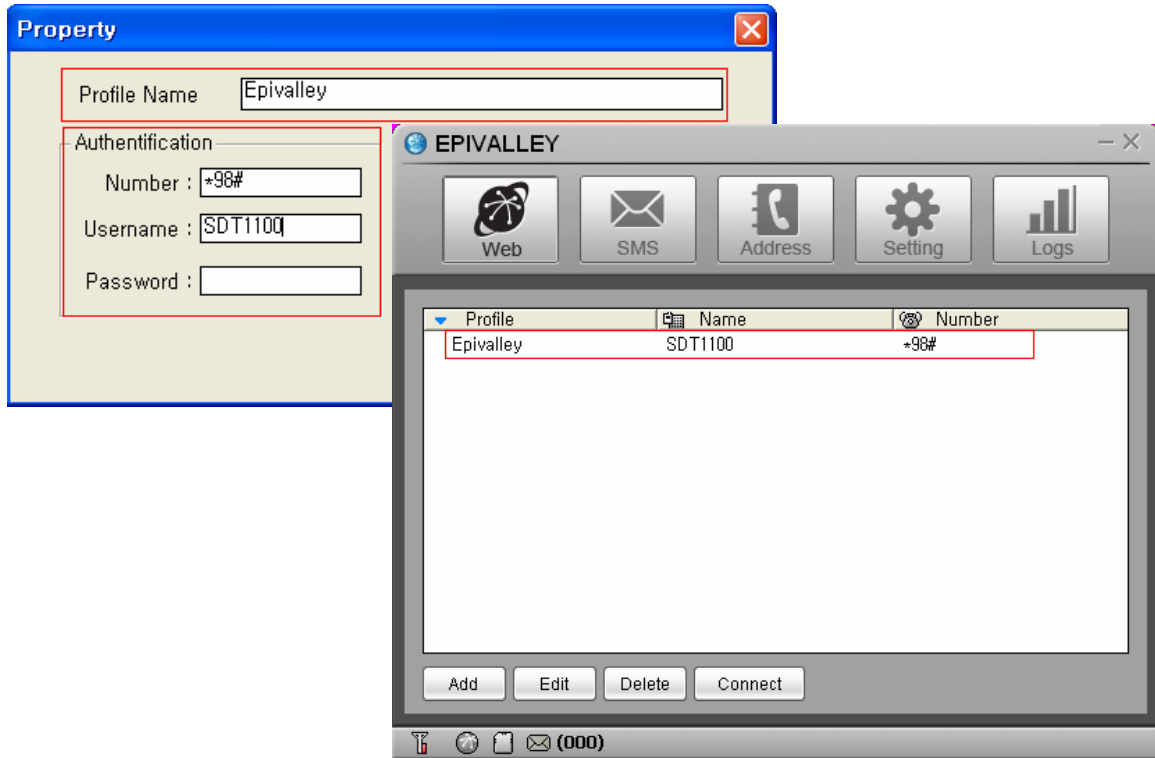
1. Click [Web].



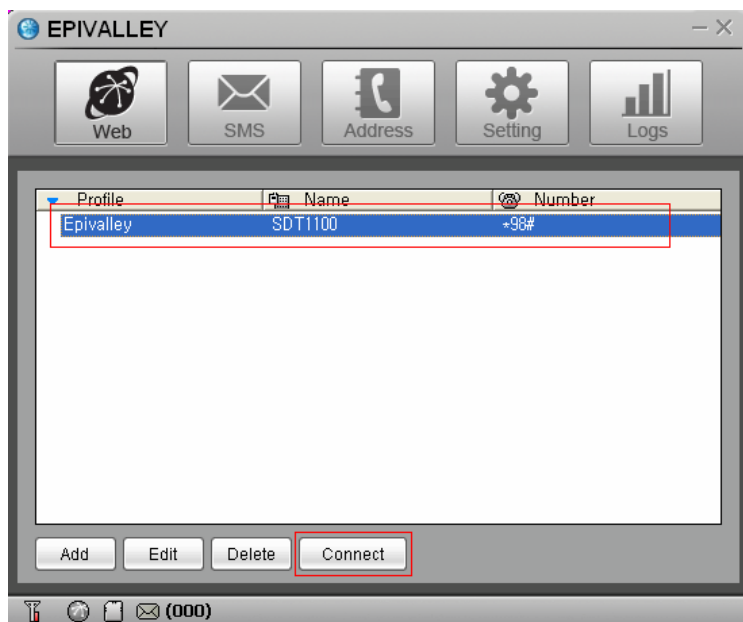
2. Create the profile needed to connect with internet. Click [Add] or click the right button of mouse and select [Add] button.



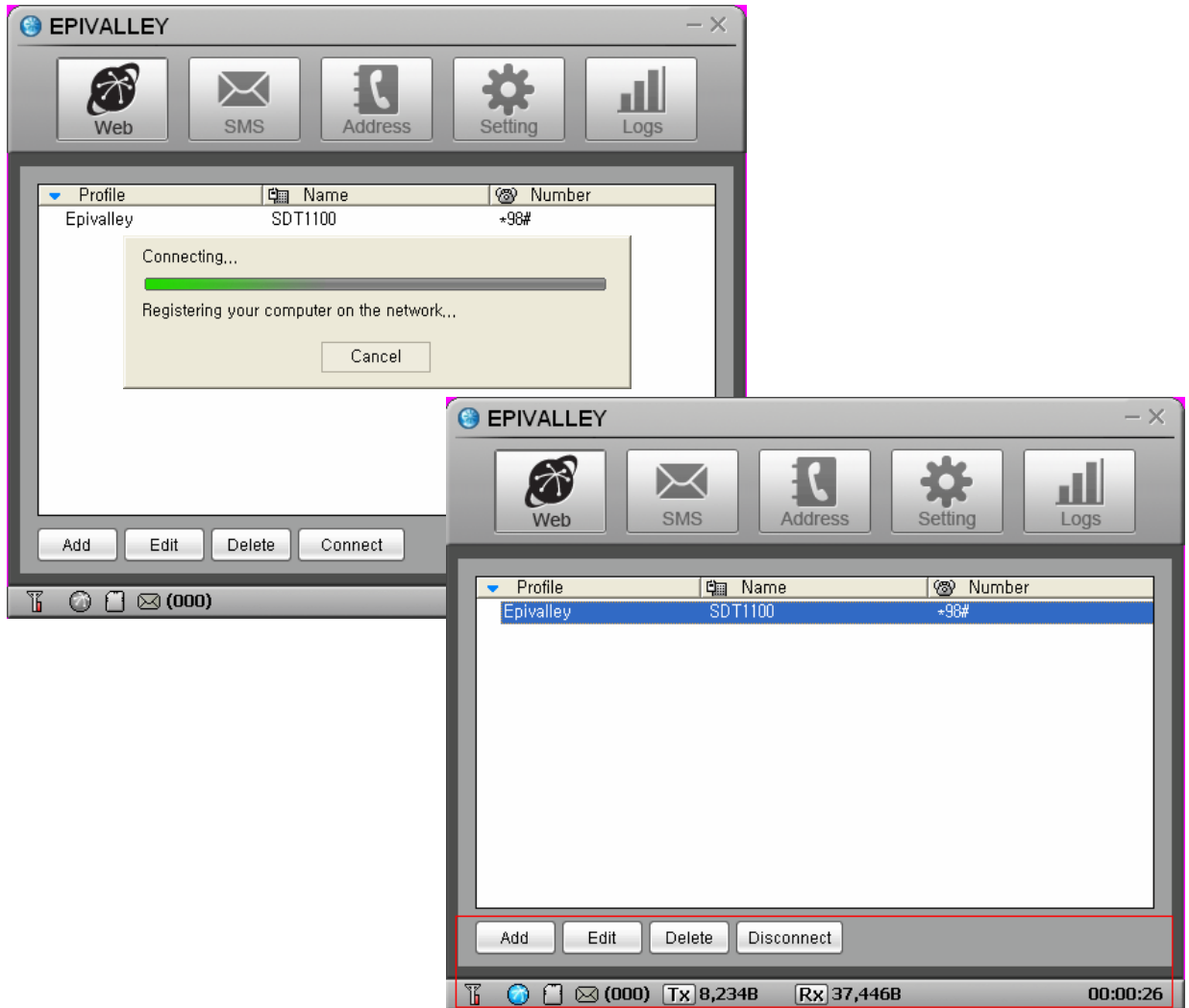
3. Input Profile Name to create the profile for internet connection and input the information needed to connect with profile. Click [OK] button to create a profile.



4. Select the profile created for internet connection and click [Connect] button.



5. Internet is connected and the time of internet use and packets may be checked.



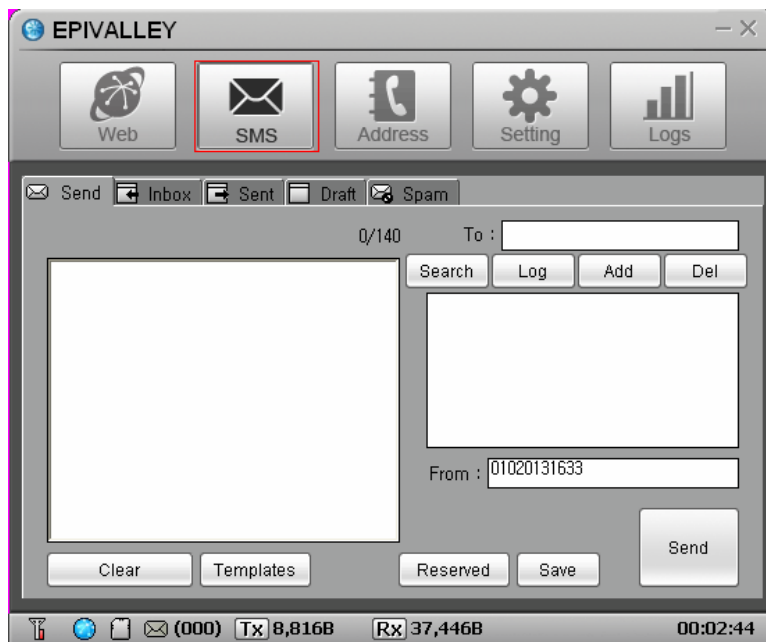
SMS

[SMS] is the menu that is used in sending short messages or confirming received short messages.

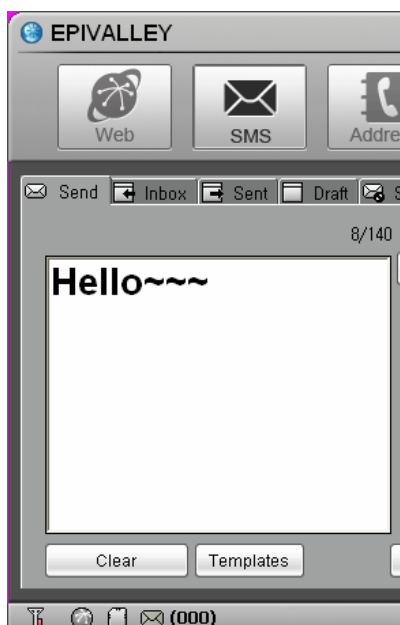
Short messages may be sent with setting the sending time and the short messages received from numbers for rejection are automatically classified into spam messages.

? Send

1. Click [SMS] button.



2. Write the message on Editor screen.



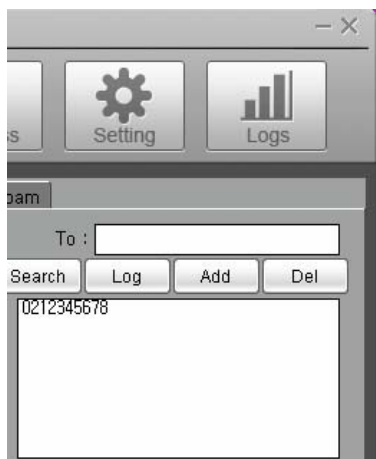
·Clear: erase the message written on Editor screen.

·Templates: designates the templates of message

·Emoticon: inputs emoticon.

·Special: inputs special characters.

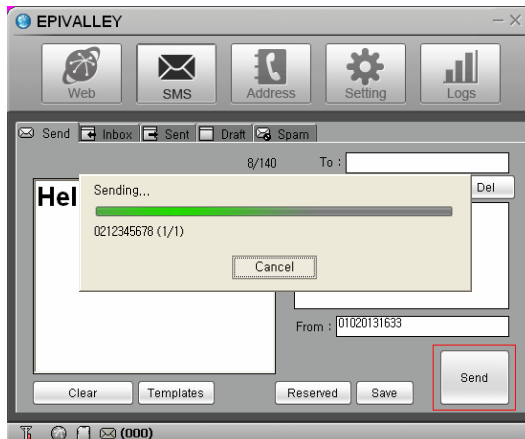
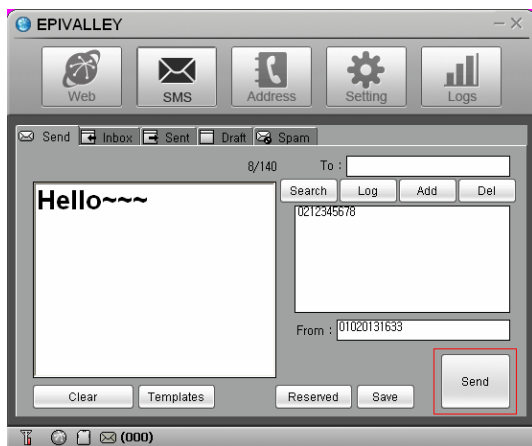
3. Input the telephone number to receive the message and click [Add] button to designate the number as the receiver's number. The telephone number may be added by selecting a number in the numbers registered in the address or may be designated by selecting a number in the message sending history after clicking [Log] button.



·Wrong designated receiver's number may be deleted by selecting the receiving number in the telephone number list and by clicking [Del] button.

·To send a messages with reservation, click [Reserved] button designate the time and date to send the messages.

4. Click [Send] button the send the message.



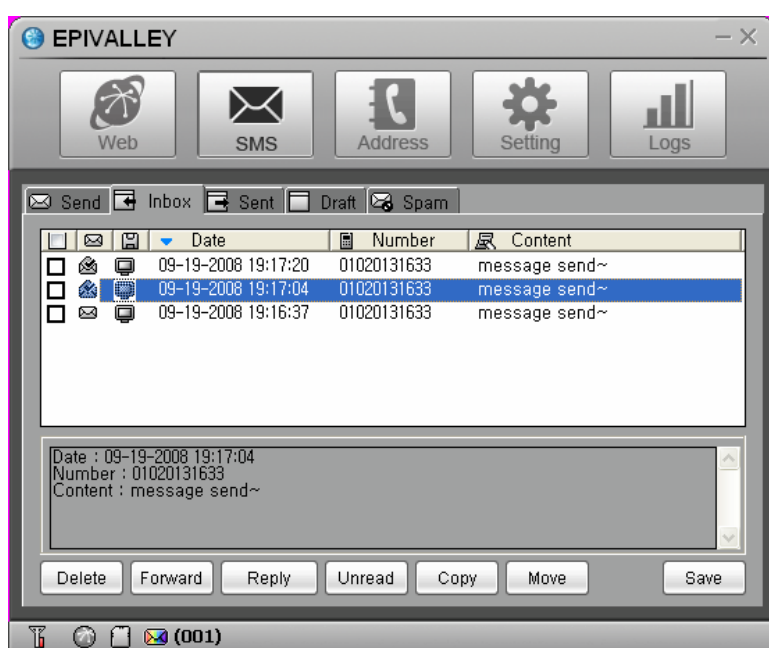
? Inbox

In [Inbox] tab, you can see the received messages.

Received messages are automatically stored in Inbox.

When a message is received, the receipt is noticed on the Windows popup screen and, if the program is minimized, the tray icon flashes.

The messages may be arranged by Date, Number, Content, Destination, and Message Status; the message may be relayed with clicking [Forward] button and a reply message may be sent with clicking [Reply] button.



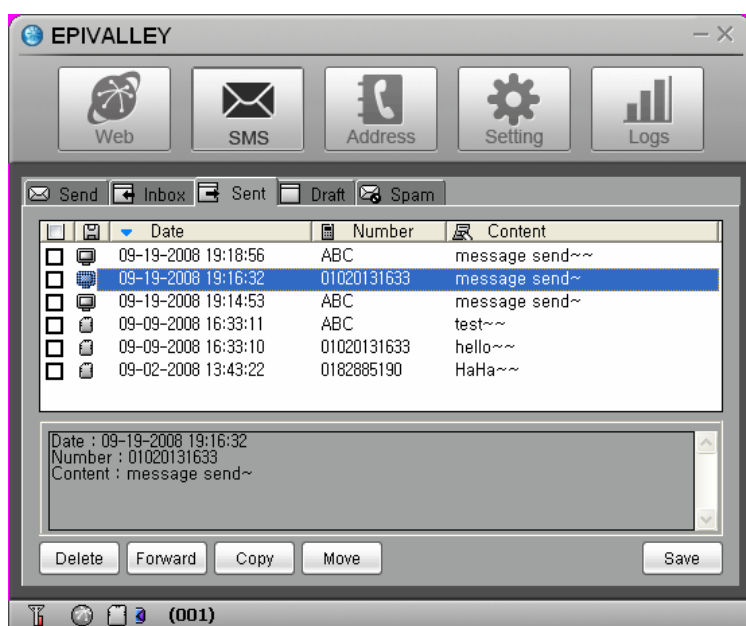
Note: The method to notice the receipt of a message may be set in [Incoming SMS Alert] in [Setting] menu.

? Sent

In [Sent] tab, you can check the messages sent.

The messages may be arranged by Date, Number, Content, Destination, and Message Status and the message may be relayed with clicking [Forward] button.

Also, the destination (PC or USIM) where the messages are stored may be confirmed with the icon.

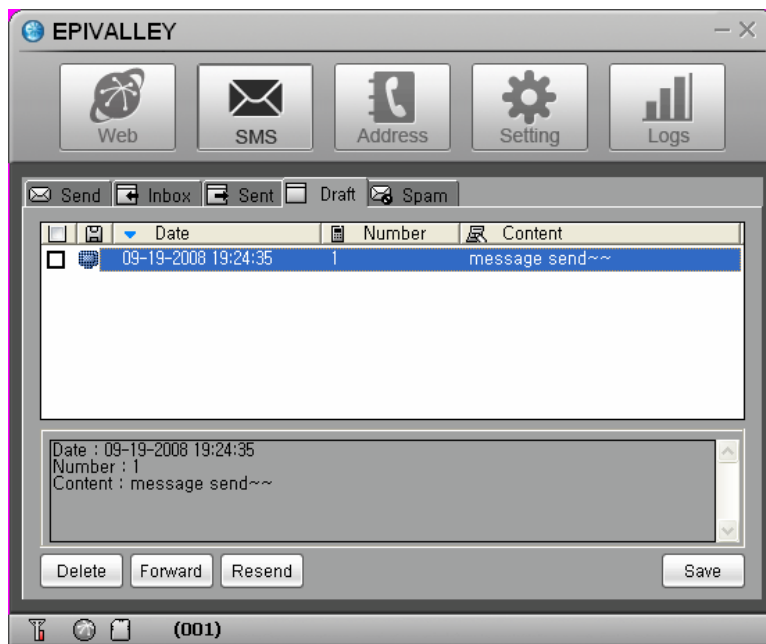


Note: Click [Save] button to store the telephone number to which the message was sent or change the destination to store the message.

? Draft

In [Draft] tab, you can check the reserved messages, the messages not sent, and the messages failed in sending.

The messages may be arranged by Date, Number, Content, Destination, and Message Status and the message may be relayed with clicking [Forward] button.

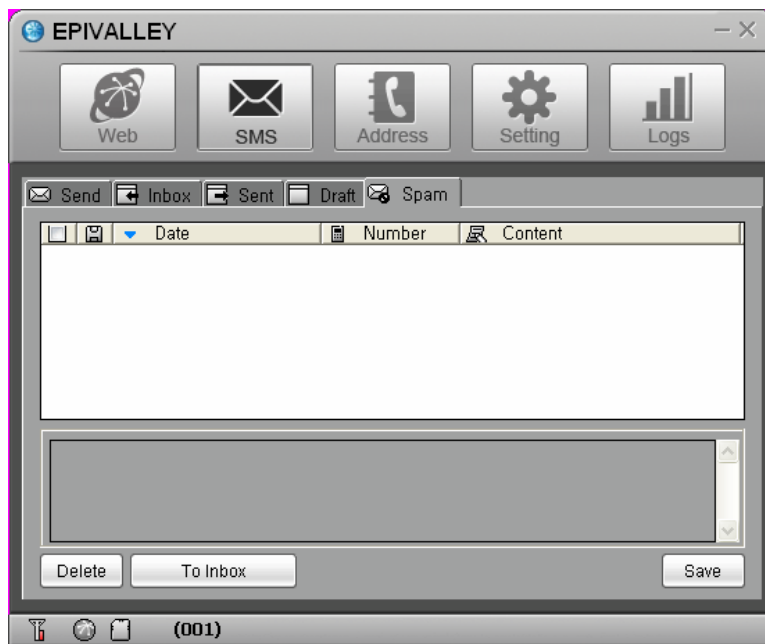


Note: Click [Resend] button to send the selected message again.

? Spam

In [Spam] tab, you can check the messages received from the telephone numbers designated as Spam and the messages containing the words designated as Spam.

The messages may be arranged by Date, Number, Content, Destination, and Message Status and the message may be stored with clicking [Save] button.



Note

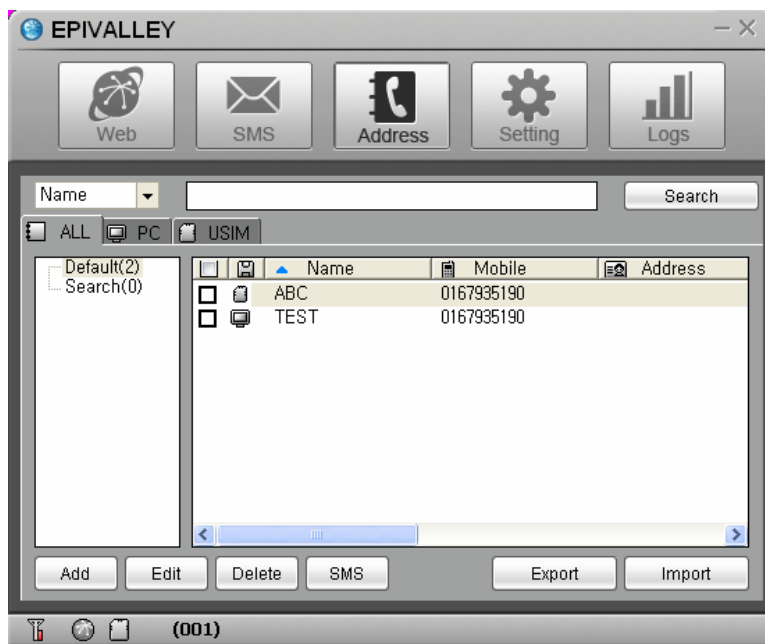
- Click [Inbox] button to move or resend the selected message.
- You can define the Spam messages in [Spam message Settings] in [Setting] menu.

Address

[Address] menu is used to register, edit, and delete telephone numbers.

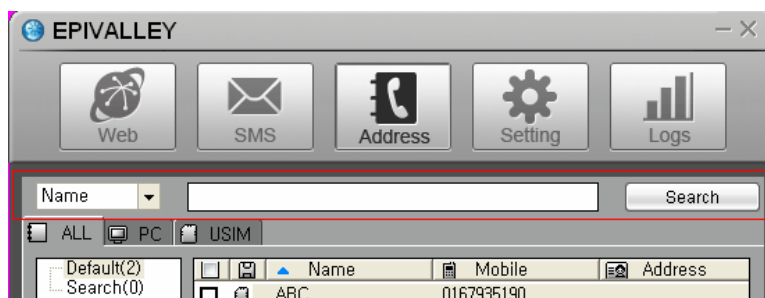
? Viewing Registered Telephone Numbers

You can check the stored telephone numbers with selecting All, PC, or SIM tab and you can view the registered telephone numbers in the arrangement by Name, Mobile, Address, Office, Home, Fax, E-mail, and Comments.



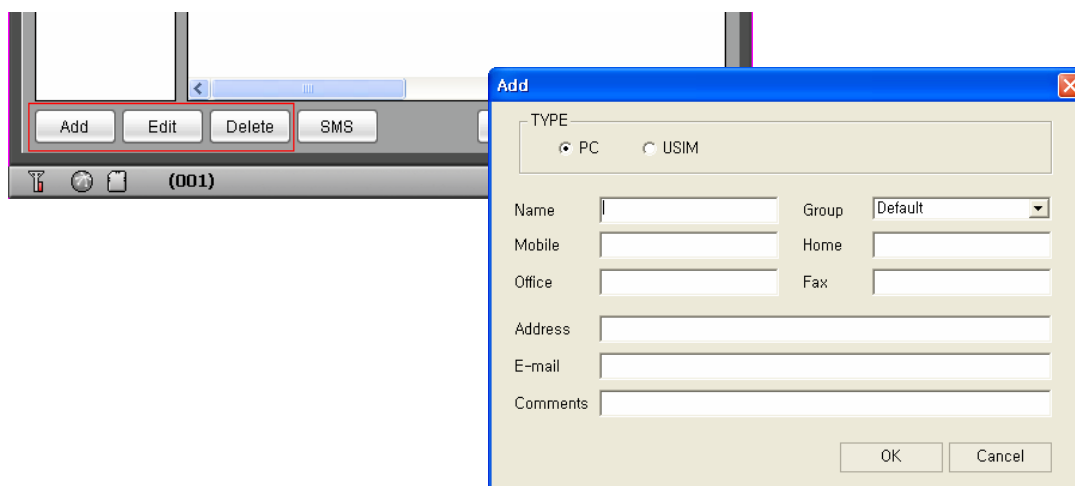
? Searching Telephone Numbers

You can search the registered telephone numbers with selecting the search type (Name, Mobile, Group, Address, Office, Home, Fax, E-mail, and Comments), inputting the search condition, and clicking [Search] button.



? Registration, Correction, and Deletion of Telephone Numbers

You can register a new telephone number or correct or delete registered telephone numbers with use of the button at the lowest part of Address Menu.



- Add: registers a new telephone number in the telephone book.
- Edit: may correct the information on the registered telephone number.
- Delete: deletes the registered telephones from the telephone book.

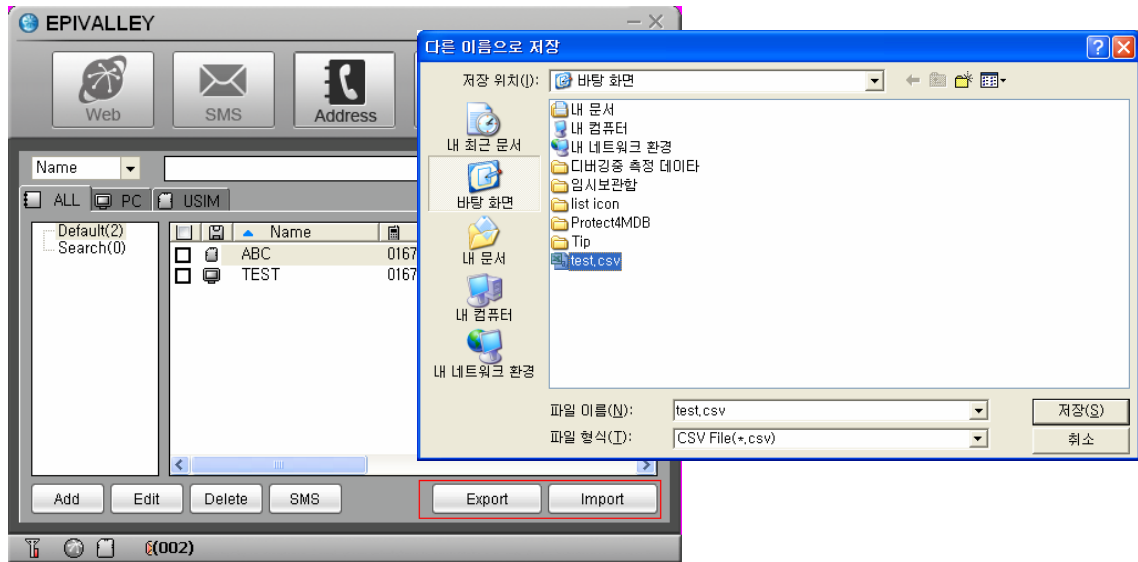
? Sending Short Messages

You can send a message to the registered telephone numbers with clicking [SMS] button at the lowest part of Address Menu. Check the telephone numbers to send the message and click [SMS] button.



? Address list Export, Import

export, import 버튼을 클릭하여 나타나는 대화상자를 통해 csv 파일형태로 폰북 리스트를 export 및 import 를 할 수 있다.



Import 전에 csv 파일작성 시 첫 번째 행에 그림과 같이 대소문자 구분 없이 순서에 맞게 Name, Mobile, Address, Office, Home, Fax, Email, Comments 를 기입하고 두 번째 행부터 항목에 맞는 값을 기입 후 csv 파일로 저장해야 한다.
(첫 번째 행의 문자열들이 맞지 않으면 에러가 발생함)

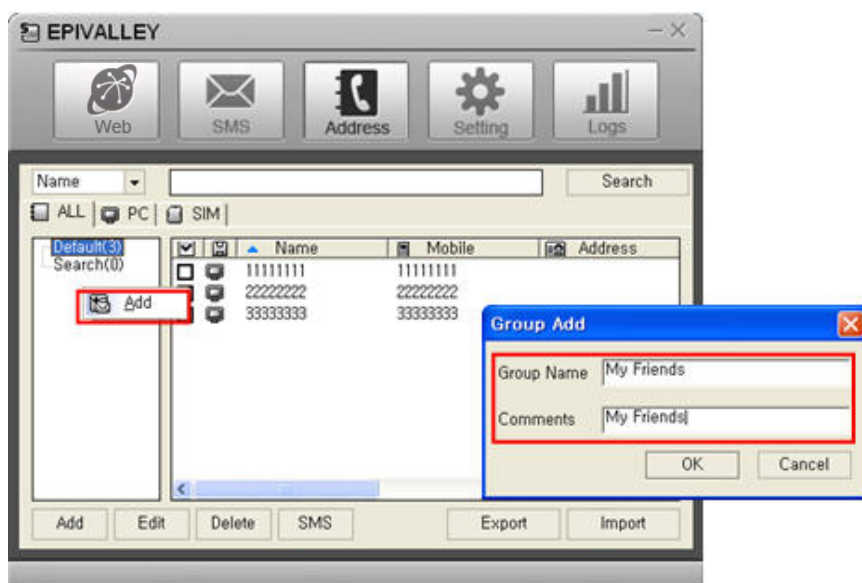
	A	B	C	D	E	F	G	H
1	Name	Mobile	Address	Office	Home	Fax	Email	Comments
2	A	11111111	A	1111	1111	1111	A	A
3	B	22222222	B	2222	2222	2222	B	B
4	C	33333333	C	3333	3333	3333	C	C
5								

? Managing Telephone Number Groups

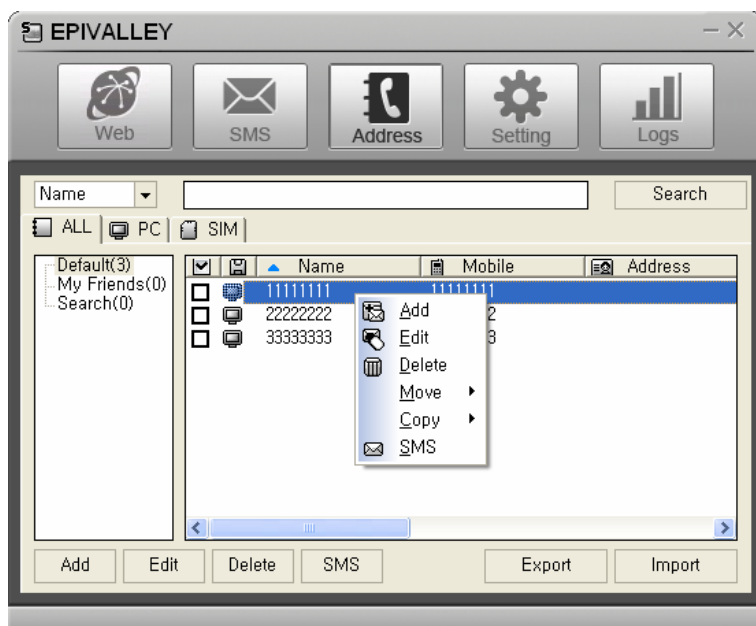
Telephone numbers may conveniently be managed with classification into groups.

A group may be created with clicking the right button of mouse and clicking [Add] button.

You can move the registered telephone numbers to another group with Drag & Drop and send a message to a group or groups at a time.

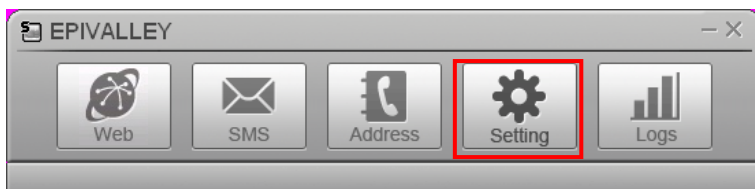


Also, you can move or copy the registered telephone number by selecting the number and clicking the right button of mouse.



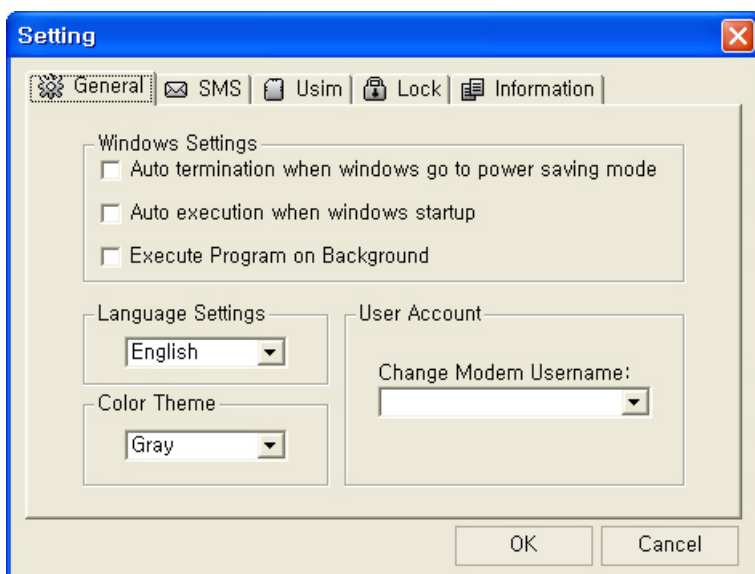
Setting

In [Setting] menu, you can set the environment related with the use of Epivalley HSDPA Dialer program.



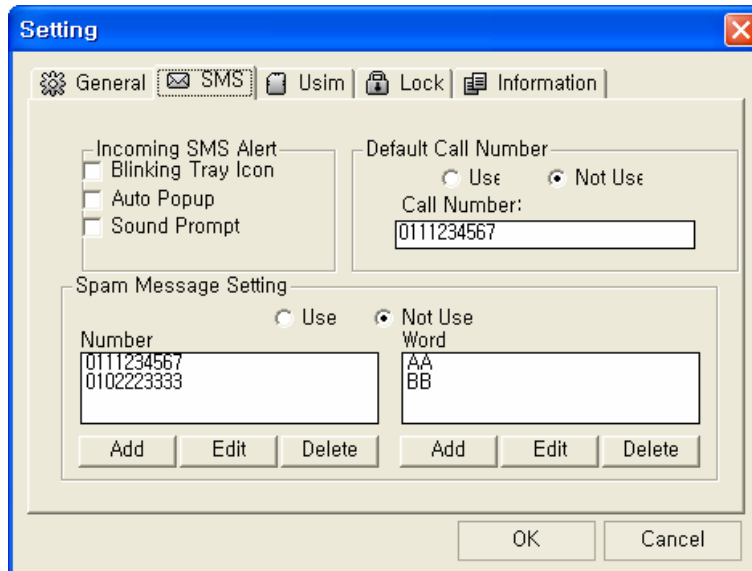
? General

In [General] tab, you can set the information on the language and color theme related with Windows.



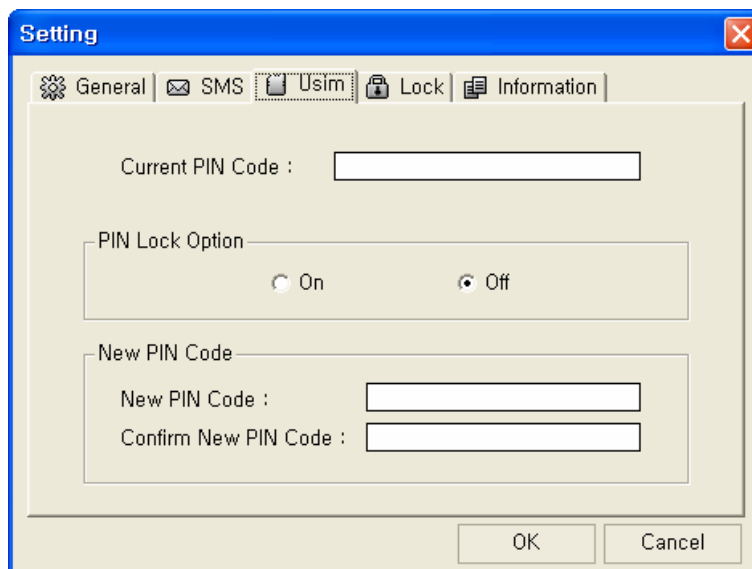
? SMS

In [SMS] tab, you can set the information on notice of message receipt and Spam message management.



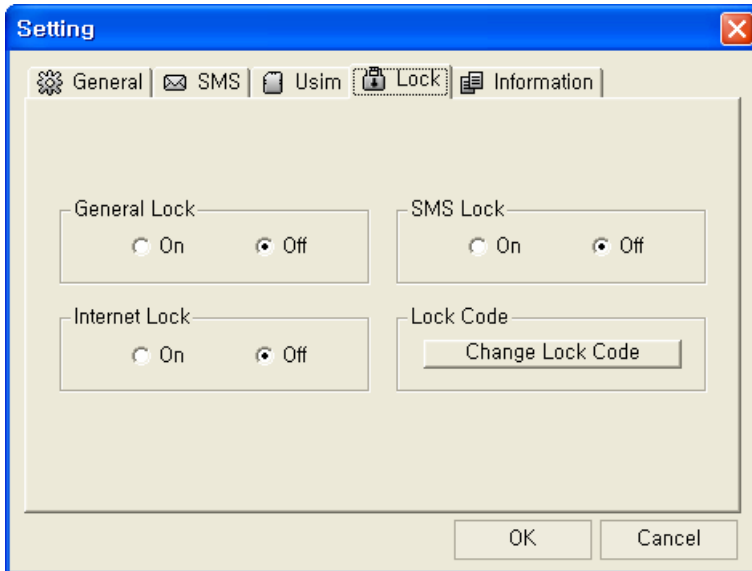
? USIM

In [USIM] tab, you can set the information related with PIN Code.



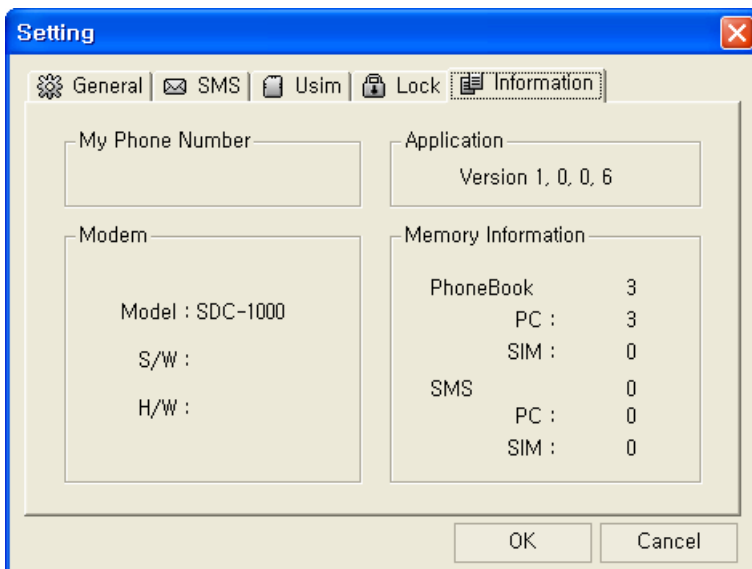
? Lock

In [Lock] tab, you can set the information related with lock function.



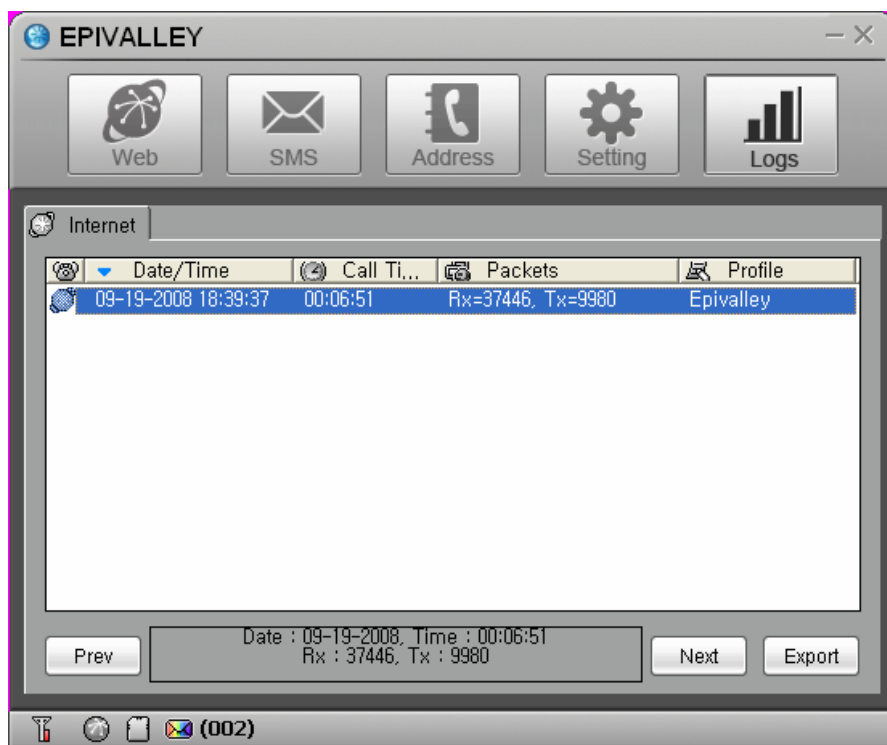
? Information

In [Information] tab, you can check the information related with S/W Version, Modem, and Memory.



Logs

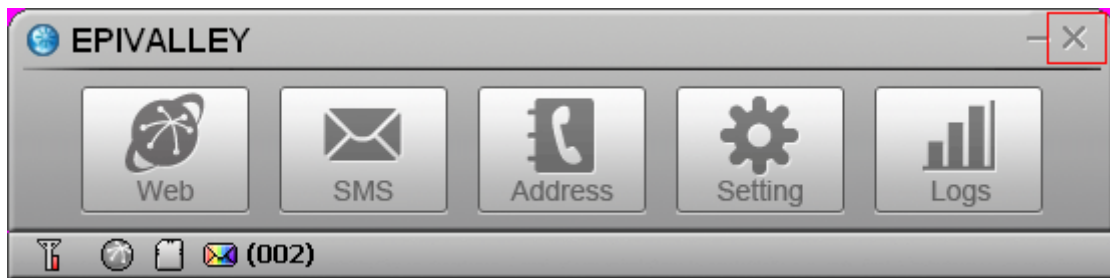
In [Logs], you can check the information on the date and time of internet connection and the quantities of sent/received data in relation to use of internet.



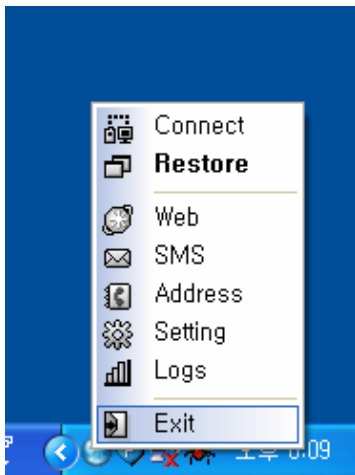
- Prev: confirms the internet logs of previous month.
- Next: confirms the internet logs of next month.
- Export: The internet logs of current month are downloaded in csv file type.

Terminating Program

To terminate Epivalley HSDPA Dialer program, click  at the right top of the program.



Or click the right button of mouse on the tray icon and click [Exit] button.



Trouble Shooting

If you informs the expected problems and solutions in relation to the use of SDT 1100, the troubleshooting will be prepared with referring to the related contents of other models.

Specification

Specification will be prepared after confirming the final specification.

Warranty

Let use be informed of the warranty policy of Epivalley.

Cauti**o**n

The R2NSDT1100 has been tested for compliance FCC RF exposure limits. The R2NSDT1100 should not be used with external antennas that are not approved for use with this device.

Use of this in any other configuration may exceed the FCC RF exposure compliance limits.

A separation between the user's body and the antenna shall be at least 20cm.

WARNING! Read this information before use

Cauti**o**n

Modifications not expressly approved by the party responsible for compliance could void the user's authority to operate the equipment.

FCC Compliance Information

This device complies with Part 15 of FCC Rules. Operation is subject to the following two conditions: (1) This device may not cause harmful interference, and (2) This device must accept any interference received. Including interference that may cause undesired operation.

Information to User

This equipment has been tested and found to comply with the limits for a Class B digital device, pursuant to part 15 of the FCC Rules. These limits are designed to provide reasonable protection against harmful interference in a residential installation. This equipment generates, uses and can radiate radio frequency energy and, if not installed and used in accordance with the instructions, may cause harmful interference to radio communications. However, there is no guarantee that interference will not occur in a particular installation. If this equipment does cause harmful interference to radio or television reception, which can be determined by turning the equipment off and on, the user is encouraged to try to correct the interference by one or more of the following measures:

- Reorient or relocate the receiving antenna.- Increase the separation between the equipment and receiver.
- Connect the equipment into an outlet on a circuit different from that to which the receiver is connected.
- Consult the dealer or an experienced radio/ tv technician for help.