

SEC-3189
SAM User Manual

Rev 1.1
September 4, 2007
Epivalley

Revision History

Rev 0.1	2007. 05. 15	First issue	Sung Eun Jo
Rev 0.2	2007. 05. 21	Replaced “tool bar” with “status bar”	Sung Eun Jo
Rev 0.3	2007. 05. 28	Added description on installation	Sung Eun Jo
Rev 0.4	2007. 06. 07	Added contents on Beta 2 Release	Sung Eun Jo
Rev 0.5	2007. 06. 13	Added contents on Beta 3, Deleted Voice function	Sung Eun Jo
Rev 0.6	2007. 06. 15	Added Results of the SAR Test	Sung Eun Jo
Rev 0.7	2007. 06. 20	Modified for VIVO	Sung Eun Jo
Rev 0.8	2007. 07. 15	Modified with final version of SAM	Sung Eun Jo
Rev 1.0	2007. 08. 14	Change Image	Sung Eun Jo
Rev 1.1	2007. 09. 04	Change Company name	SE Kang
Rev 1.2	2007. 09. 18	Add the warning for the modem-memory switch	SE Kang

Contents

1. Installation & Setup	4
1. SAM Installation	4
2. Express Card Device Installation	6
2. Getting Started	9
3. Internet	9
4. SMS	11
1. Send	11
2. Inbox	12
3. Sent	13
4. Temporary	14
5. Spam	15
5. Address	16
1. List	16
2. Search	16
3. Group	17
6. Log	18
1. Internet Log	18
7. Settings	19
1. General Settings	19
2. SMS Settings	19
3. Lock Settings	20
4. Information	20
8. Web	22
9. Email	22
10. Others	22
1. File	22
2. View	23
3. Help	23
4. Internet Access Status Icon	23
5. Tray Icon	24
6. Mass Storage	24
11. Specification	25

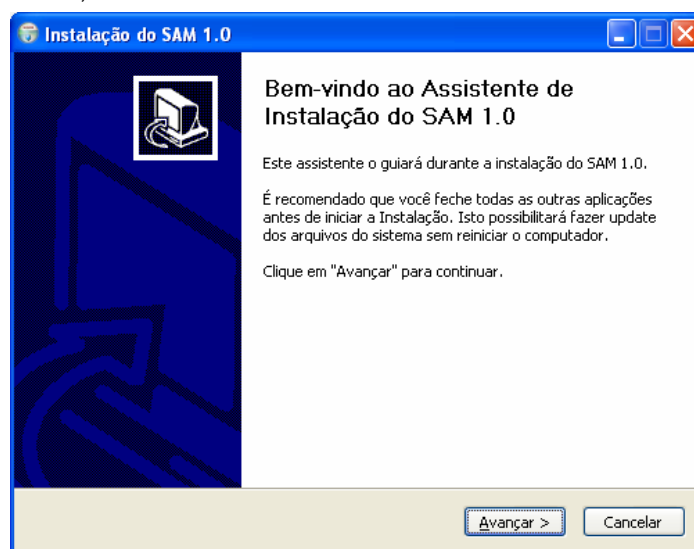
1. Installation & Setup

1. SAM Installation

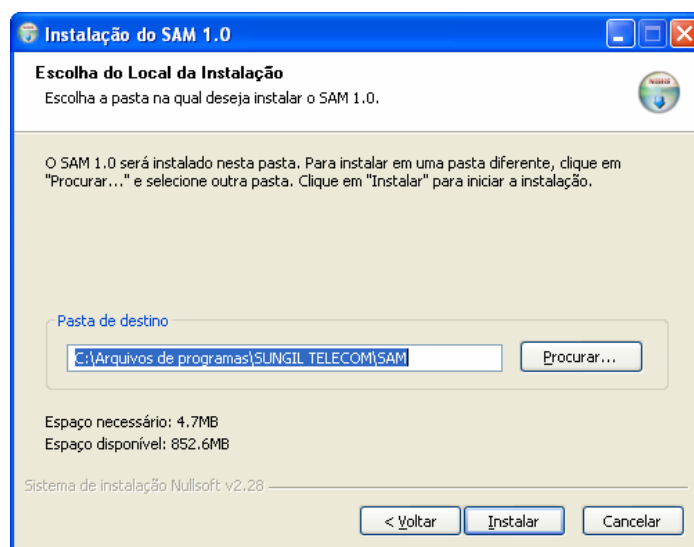
- 1.1 Insert the Installation CD to the CD-ROM Drive. If the installation process does not start automatically, run Setup.exe file in the CD-ROM Drive. Select a language and click “OK”. (Do not plug the Express Card in the PCI express port before you finish installing SAM.)



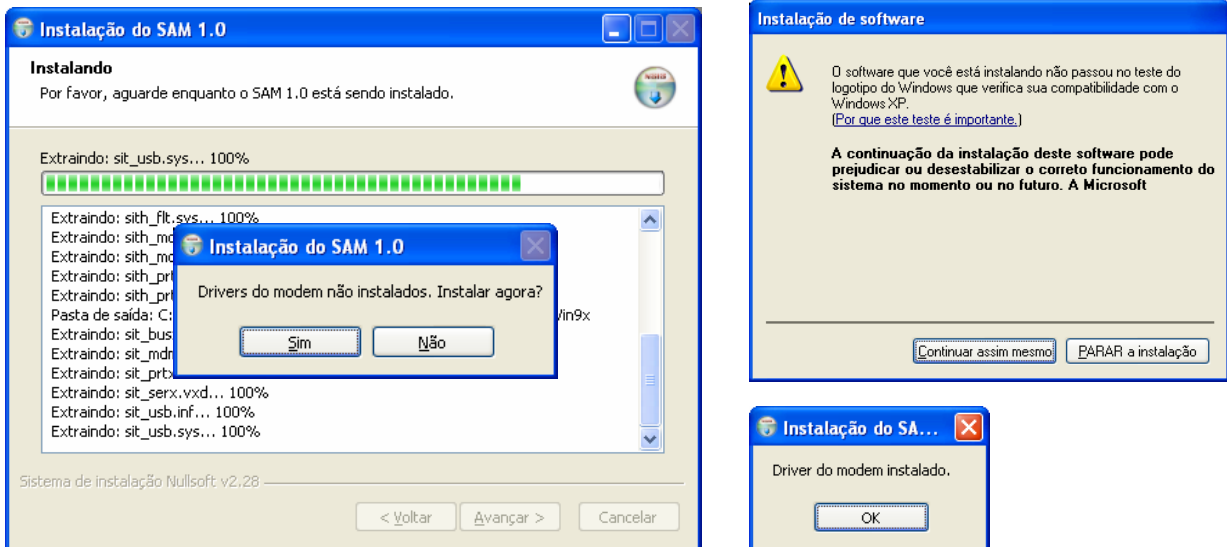
- 1.2 To continue installation, click “Next”.



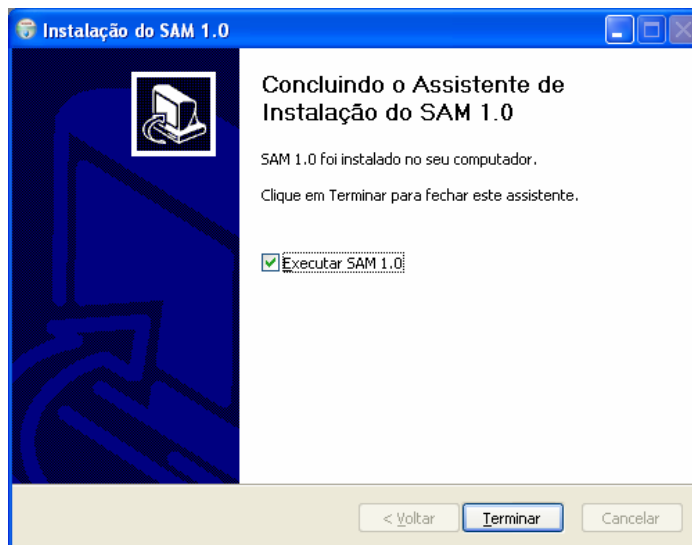
- 1.3 Select a folder and click “Install”.



- 1.4 In first time use of modem, the device Driver must be installed. Click “Yes” and then click “Continue Anyway” when Software Installation warning appears. If device Driver is installed, click “OK” and wait until the installation is finished.

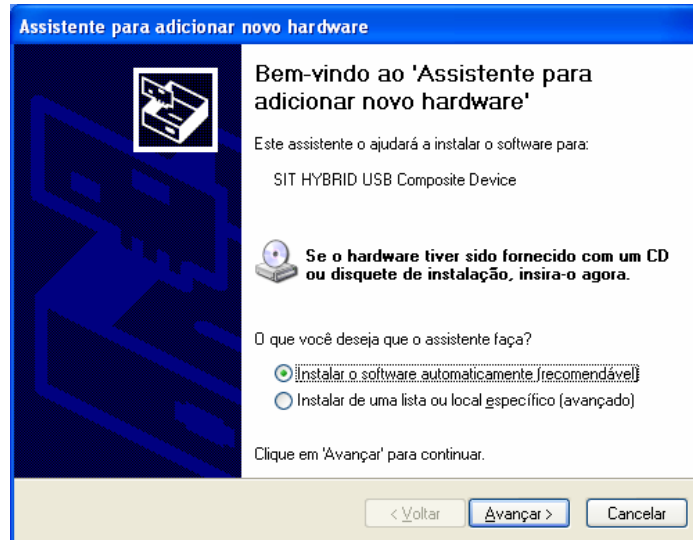


- 1.5 If SAM is installed successfully, click “Finish”.



2. Express Card Device Installation

- 2.1 After finish installing SAM, plug the modem in the PCI express port. Then, the New Hardware Wizard window appears to install the SIT HYBRID MODEM Composite Device.
- 2.2 Select “Install the software automatically (Recommended)” and click “Next”.



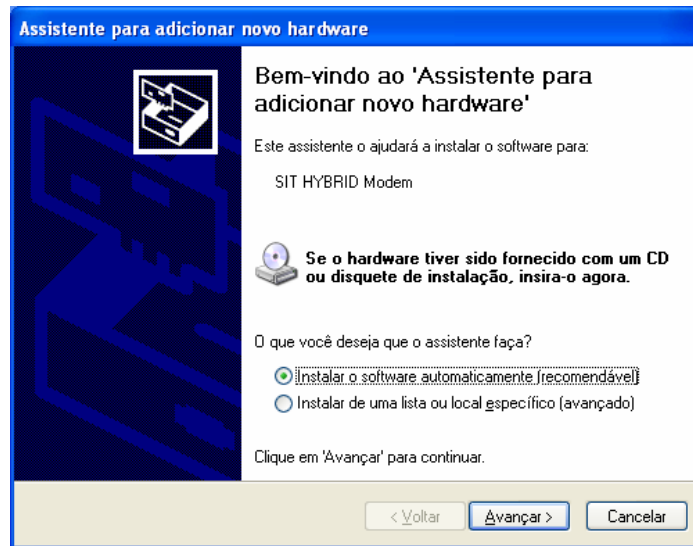
- 2.3 If the system finds modem driver, the “Hardware Installation” warning message appears. Click “Continue Anyway”.



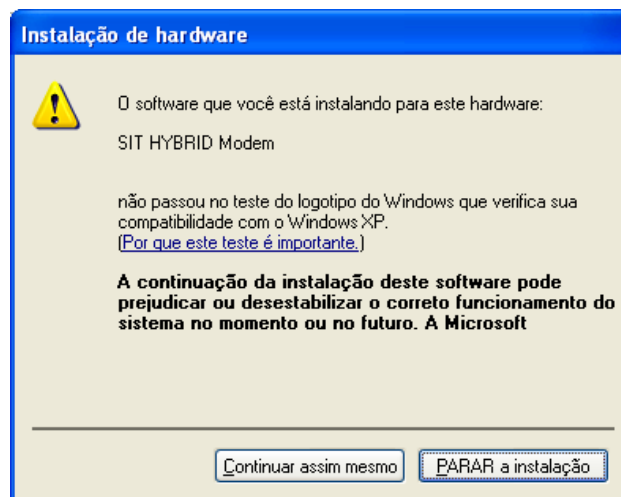
- 2.4 If installation is complete, click “Finish”.



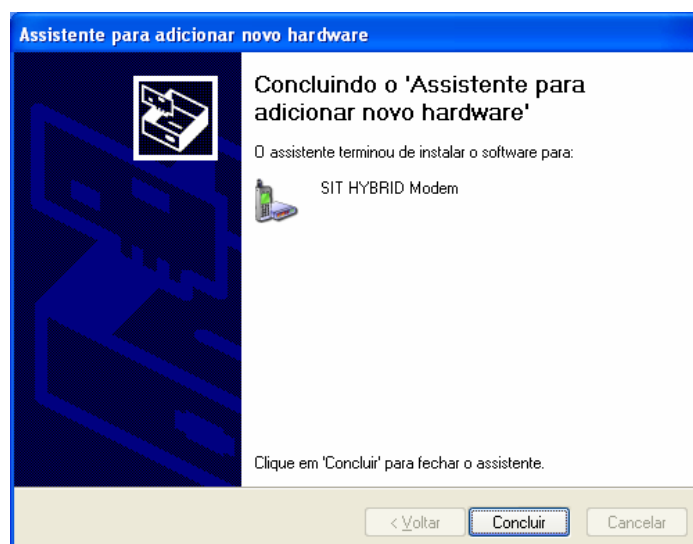
2.5 The New Hardware Wizard appears to install the SIT HYBRID MODEM Modem. Installation procedure is the same with that of SIT HYBRID MODEM Composite Device. Click “Next”.



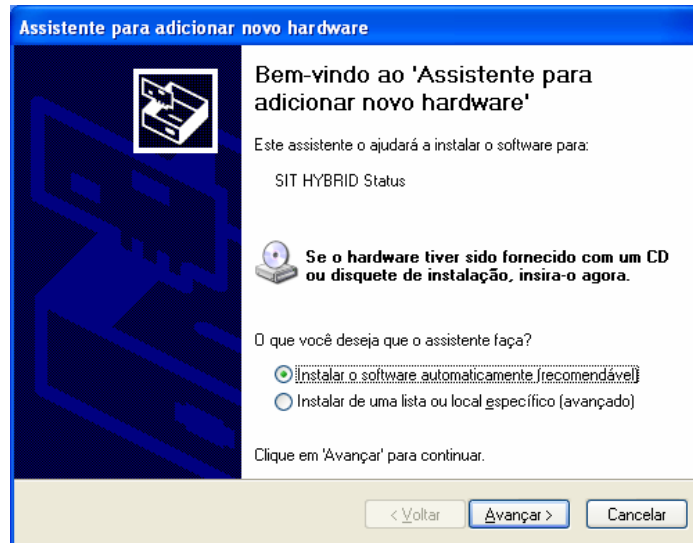
2.6 Click “Continue Anyway”.



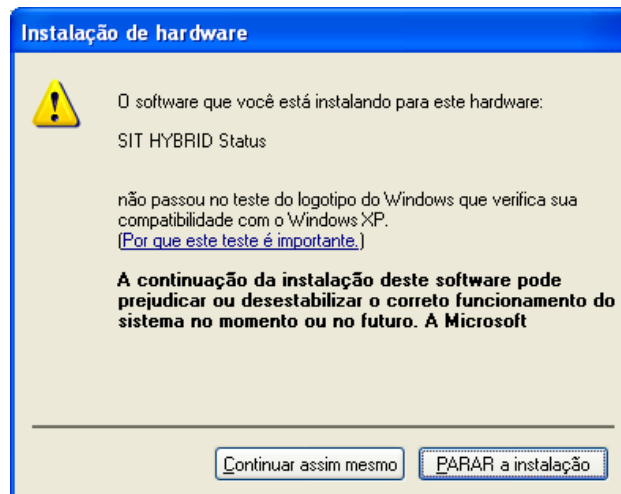
2.7 Click “Finish”.



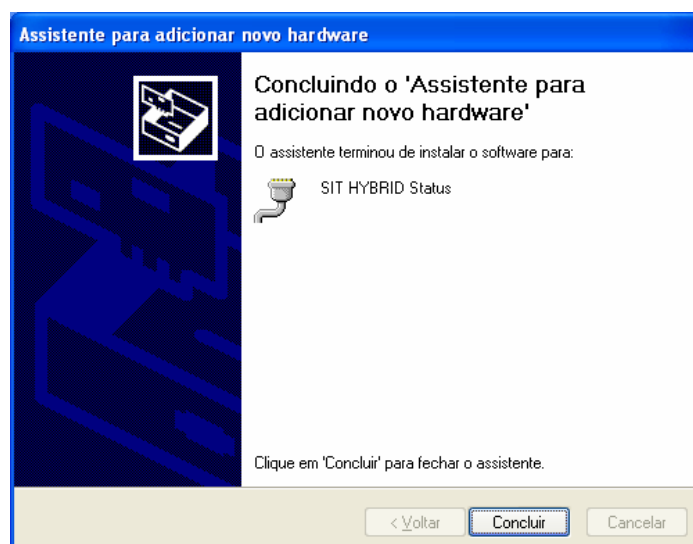
2.8 The New Hardware Wizard appears to install the SIT HYBRID MODEM Status. Installation procedure is the same with that of SIT HYBRID MODEM Composite Device. Click “Next”.



2.9 Click “Continue Anyway”.



2.10 Click “Finish”.

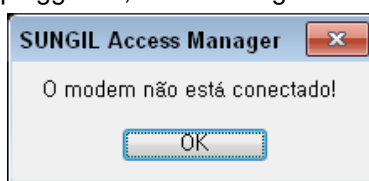


2. Getting Started

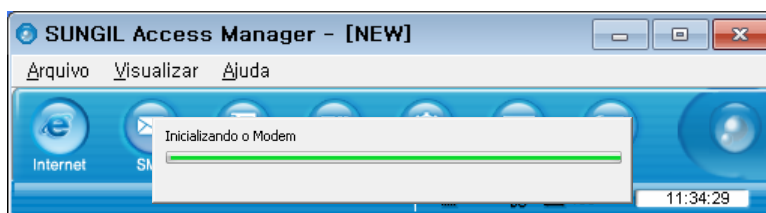
1. Plug the modem in the PCI express port, and select "sam.exe". Then the following initial window appears.



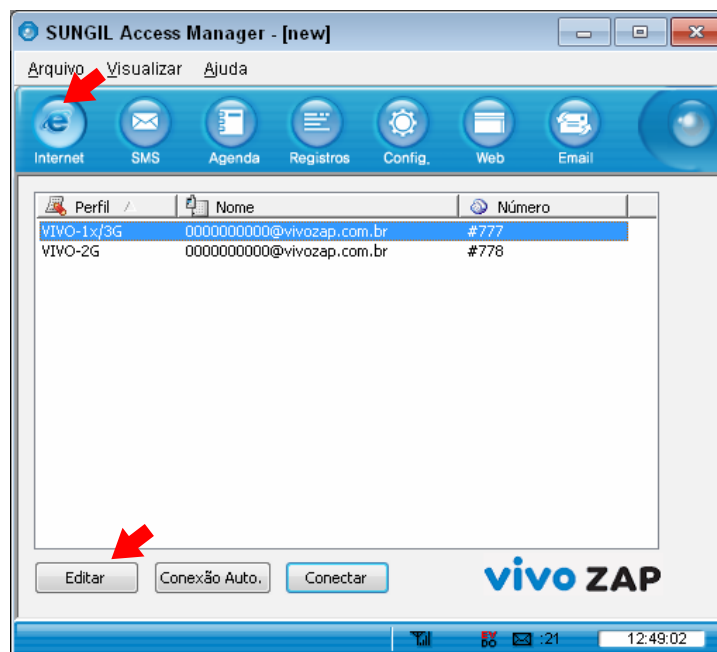
2. If the modem is not properly plugged in, the following message appears.



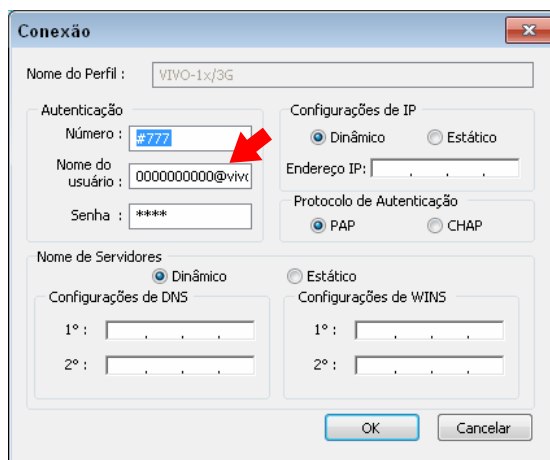
3. If the system finds the modem, SAM is started as in the following figure.



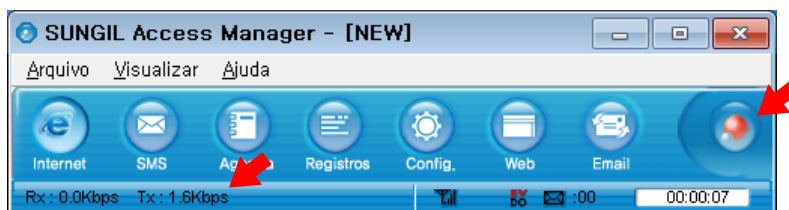
3. Internet



1. To access Internet, click “Internet”.
2. Click “Edit” to edit a connection profile.
3. Set the profile for connection.



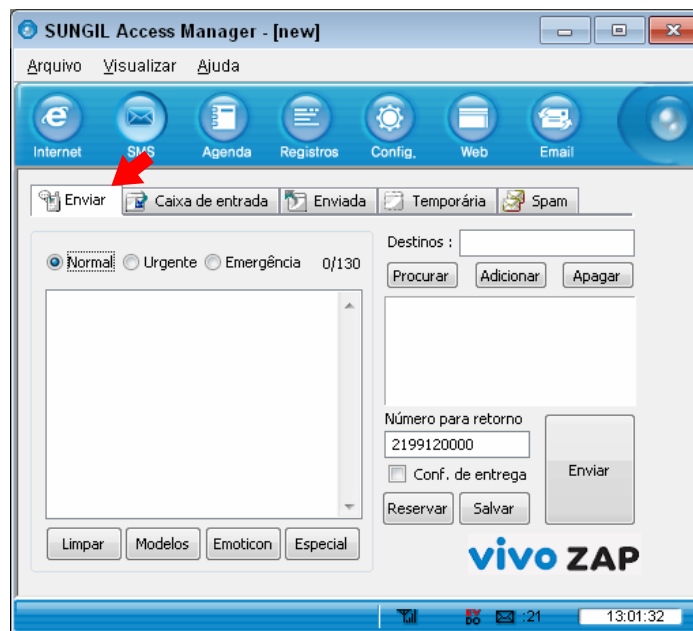
4. Select a profile from the list, and click “Connect”. If you click “Auto Connect”, the modem will be connected with 1x/3G or 2G depends on where you are.
5. If Internet is accessed, “Connected” is displayed in message box. Rx or Tx status appears, and the Internet connection icon appears in the top right of the program window.



6. If you click “Web” after the system is connected to Internet, the Internet browser appears. If you click “Email”, the Email Client or the web mail selected by the service provider is started.
7. In order to disconnect from Internet, click “Disconnect”, and if the confirmation window appears, click “Yes”.

4. SMS

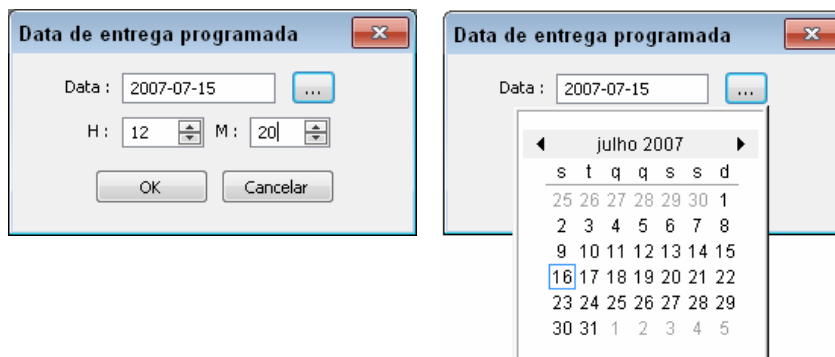
1. Send



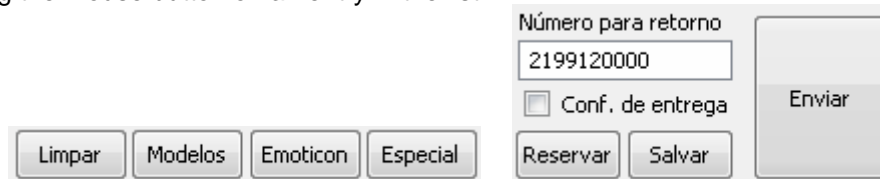
- 1.1 To send a message, click “SMS”, and select “Send”.
- 1.2 Write a message, enter the numbers of the receivers one by one, and click “Add”. To delete a number from the list, select the number and click “Del”.



- 1.3 Select “Normal”, “Urgent” or “Emergency” for the priority of the message, and click “Send”.
- 1.4 To send a message to numbers of users, the window shows the current number of receivers.
- 1.5 To send a message at the designated date and time, click “Reserved”. Select Year, Month, Day, Hour and Minute, and click “OK”. The reserved message is saved in the Temporary Box.

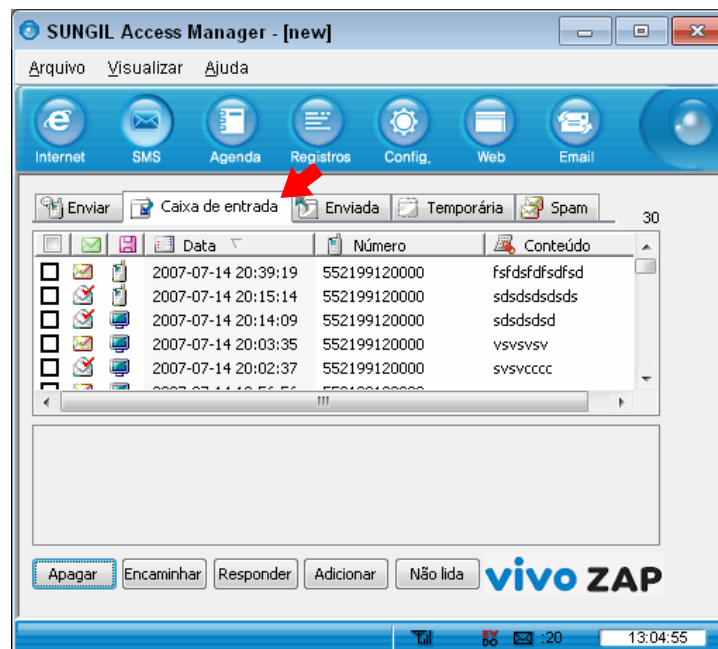


- ▶ You can use the following functions with the buttons provided under the list or by right-clicking the mouse button on an entry in the list.



- **Search** : You can search numbers in the Address Book.
- **Clear** : The message you have written is all cleared.
- **Emoticon** : You can select/edit emoticons and insert them in the message. To insert an emoticon, double-click the emoticon, or select and click the “Insert” button. To edit an emoticon, click “Edit”, edit the emoticon.
- **Templates** : You can select/edit templates to enter a message.
- **Special Characters** : You can select special characters to enter a message.
- **Reserved** : You can set the date and time for a reserved message.
- **Save** : The message is saved in the “Temporary” box.
- **Send** : The message is transmitted.
- **Delivery ACK** : To receive the confirmation message when the message is delivered successfully.

2. Inbox



- 2.1 If a message is incoming, an auto popup message appears, or the tray icon blinks, or the alert is sounded depending on your selection in “Incoming SMS Alert”. The received message is

automatically saved in Inbox.

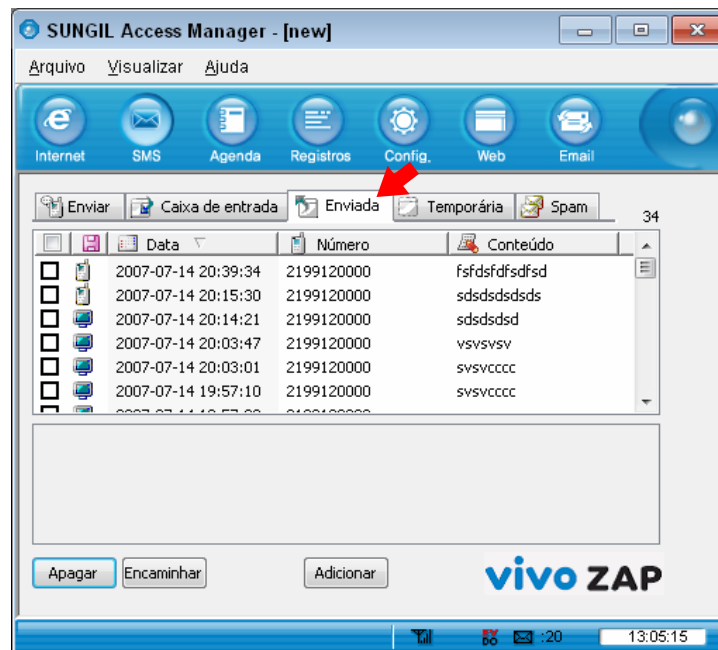
To set the "Incoming SMS Alert" option, press the "SMS" tab in the "Settings" menu, and set "Incoming SMS Alert" option. Refer to "7. Settings" for details.

- 2.2 If there are messages you have not read, the count is indicated in the Status bar (in the bottom of the window).
- 2.3 The messages are sorted by Number, Name, Date and Content in the "Inbox" menu. The icon of each message indicates if the message is a Text Message or Read or Unread Message, and if it is saved in PC or Modem.
 - ▶ You can use the following functions with the buttons provided under the list or by right-clicking the mouse button on an entry in the list.



- **Reply** : Select this button to send a reply. The "Send" menu is automatically selected, and the number of receiver is added to the "Contacts" list.
- **Forward** : Select this button to forward a message to other persons. The "Send" menu is automatically selected, and the content is automatically entered.
- **Unread** : You can change message status from "Read" to "Unread".
- **Add** : Select this button to add the sender in the Address book. Enter information, select PC, Modem and then, click "OK".
- **Delete** : The selected messages are deleted from the list.

3. Sent



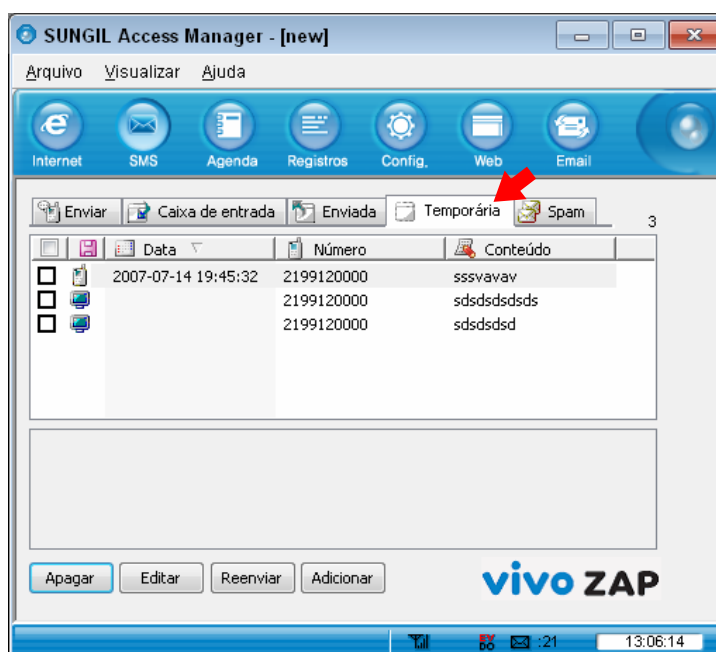
- 3.1 In the "Sent" menu, the sent messages are sorted by Number, Name, Date and Content. You can identify the location of the messages (PC or Modem) with the icons.

- ▶ You can use the following functions with the buttons provided under the list or by right-clicking the mouse button on an entry in the list.



- **Forward** : Select this button to forward a message to other persons. The "Send" menu is automatically selected, and the content is automatically entered.
- **Add** : Select this button to add the sender in the Address book. Enter information, select PC or Modem, and then, click "OK".
- **Delete** : The selected messages are deleted from the list.

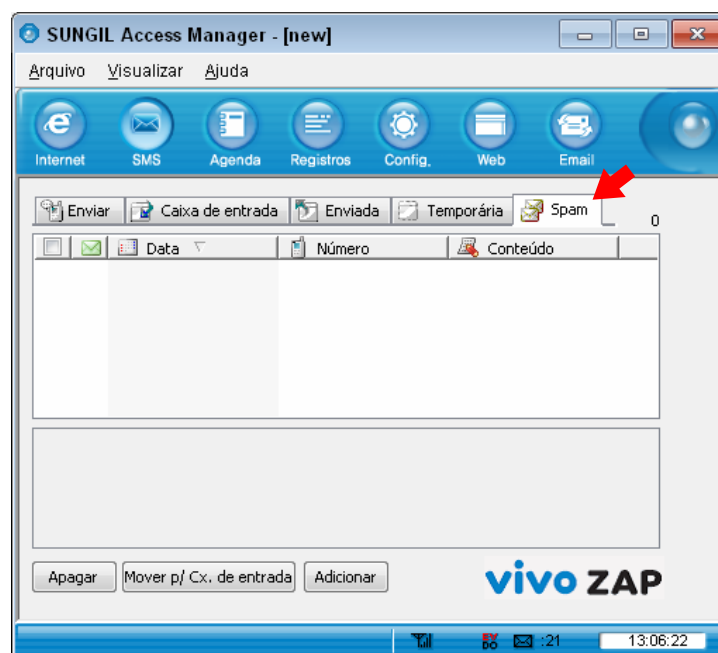
4. Temporary



4.1 In the "Temporary" menu, the failed messages or unsent messages are listed.

- ▶ You can use the following functions with the buttons provided under the list or by right-clicking the mouse button on an entry in the list.
 - **Edit** : Select this button to edit and send the messages selected in the list. The "Send" menu is automatically selected, and the content is automatically entered.
 - **Resend** : The selected messages are retransmitted.
 - **Add** : Select this button to add the sender in the Address book. Enter information, select PC or Modem, and then, click "OK".
 - **Delete** : The selected messages are deleted from the list.

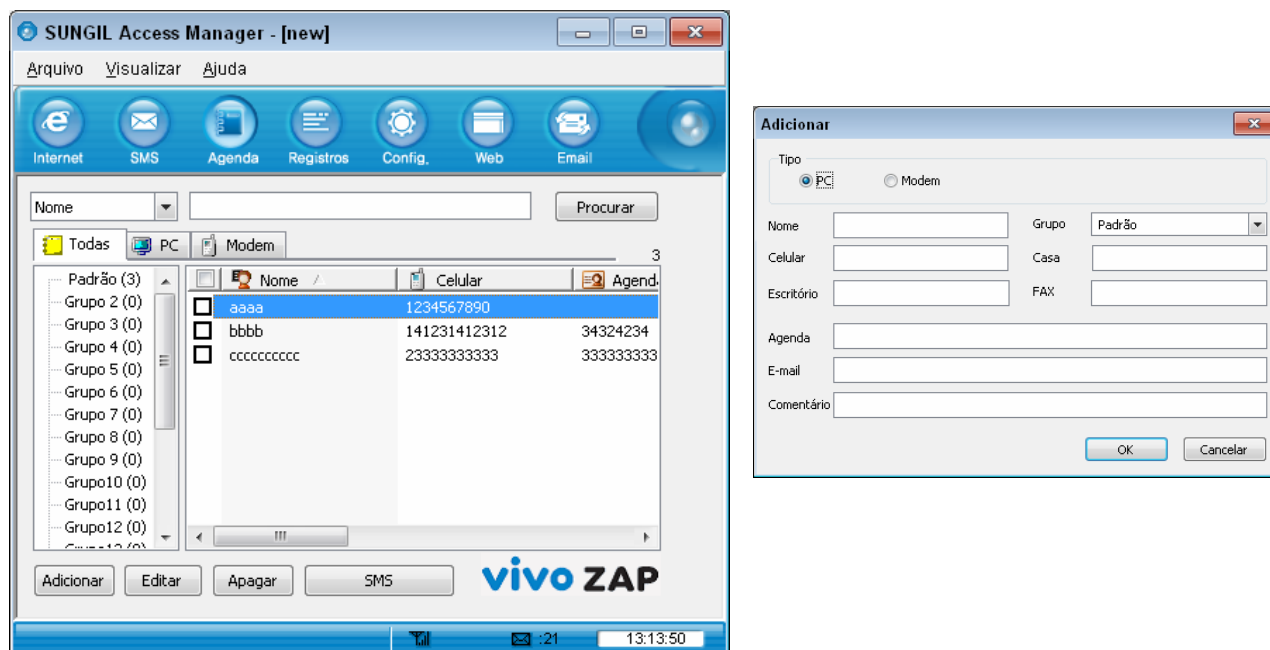
5. Spam



- 5.1 In the "Spam" menu, the filtered messages containing specific numbers or words are listed. The messages are sorted by Number, Name, Date and Content.
- 5.2 You can select the numbers or words you wish to filter as spam message in the "SMS" tab of the "Settings" menu. You can select "Use" or "Not Use" in "Spam Message Settings", and add/edit/delete the Spam numbers with the "Add", "Edit" or "Delete" button in the Number list. You can also add/edit/delete the Spam words with the "Add", "Edit" or "Delete" button in the Word list.
- ▶ You can use the following functions with the buttons provided under the list or by right-clicking the mouse button on an entry in the list.
 - **Delete** : The selected messages are deleted from the list.
 - **To Inbox** : The received messages are moved to "Inbox".
 - **Add** : Select this button to add the sender in the Address book. Enter information, select PC or Modem , and then, click "OK".

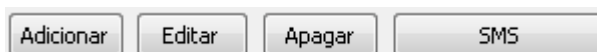
5. Address

1. List



1.1 To save a phone number in the Address book, click “Add” under the phone numbers list. Select the location between “PC”, “Modem” and enter Name, Mobile, Group, Home, Office, FAX, Address, E-mail and Comment, and then, click “OK”.

- You can use the following functions with the buttons provided under the list or by right-clicking the mouse button on an entry in the list.



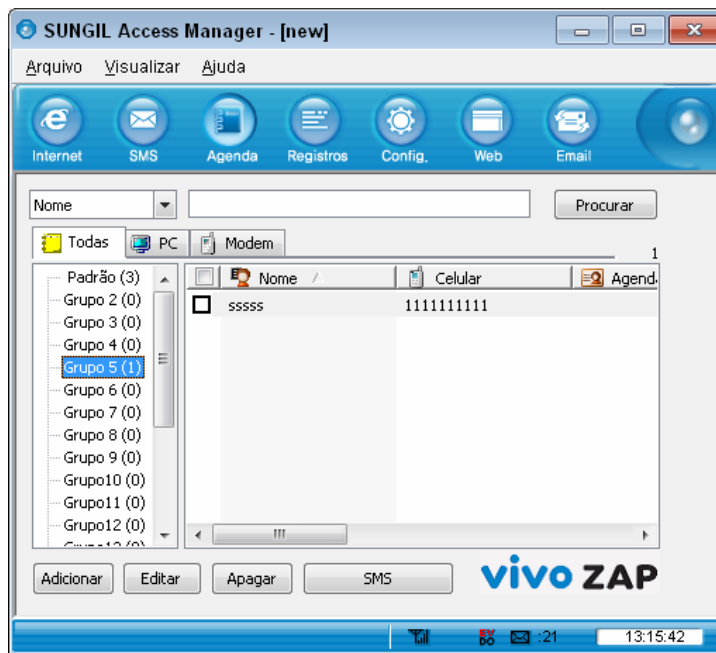
- **Add:** Add a new number in the Address book.
- **Edit :** To modify a number or other data, click “Edit”, modify contents, and then, click “OK”.
- **Delete :** To delete a number, select the checkbox of the entry in the list, and click “Delete”. To delete all the entries in the list, select the checkbox on the top of the list, and click “Delete”.
- **SMS :** If you click “SMS” after selecting a number in the list, the “SMS” menu is selected.
- **Move :** Move information of member from PC to Modem, or vice versa.
- **Copy :** Copy information of member from PC to Modem, or vice versa.

2. Search



- 2.1 To search an entry in the list, select a field (Name, All no, Mobile, Group, Address, Home, Office, FAX, Email, or Comments) in the top left of the list, enter a name or number, and then, click "Search". Then, the entries containing the name or number are listed.
- 2.2 You can search entries in a specific storage (PC, Modem or All) by clicking the concerned button under the search field.

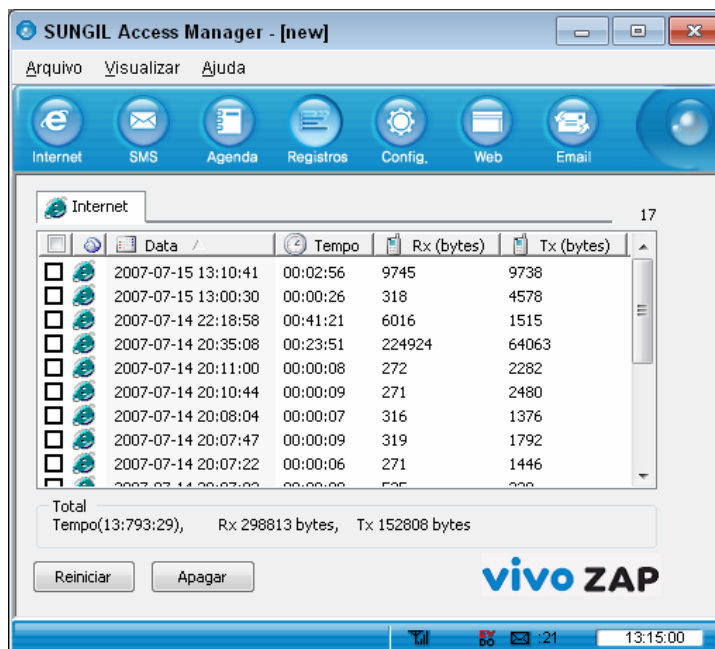
3. Group



- 3.1 There are 20 groups (Default and Group2 ~ Group20) and you can only delete/add/modify the groups except for Default when the modem is connected with SAM.
- 3.2 To move a member between groups, click the member in the list, and drag and drop to the target group folder.
 - ▶ You can use the following functions with the buttons provided under the group list or by right-clicking the mouse button on an entry in the list.
 - **Add** : To add new groups,(max 20 groups)
 - **Edit** : To edit the name of the group.
 - **SMS** : To send SMS to all the members of a group.
 - **Delete** : To delete all the members of a group,

6. Log

1. Internet Log



- 1.1 The "Total" field under the list shows the total time, the total bytes of the sent data and the total bytes Kbytes of the received data.
- 1.2 The Internet Log list displays information on Internet usages such as dates, time, Tx and Rx.
- 1.3 On the top of the Internet Log list, there's the current log count.

- ▶ You can use the following functions with the buttons provided under the list or by right-clicking the mouse button on an entry in the list.

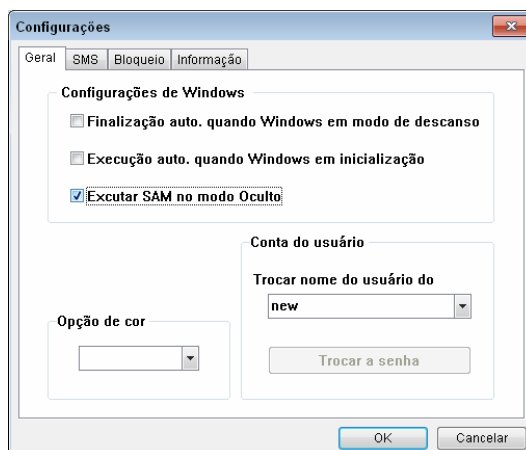


- **Reset** : Deletes all the entries of the list, and reset all the values in "Total" field to 0.
- **Delete** : Deletes the entries in the list of which checkboxes are selected.

7. Settings

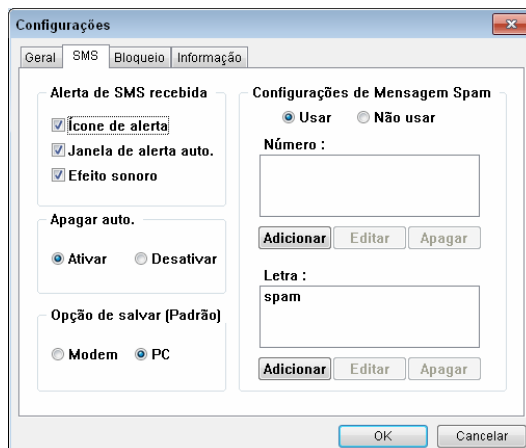


1. General Settings



- 1.1 If you select “Auto termination when windows go to power saving mode” in “Windows Settings”. the program is automatically exited when the PC is switched to the power saving mode. If you select “Auto execution when windows start”, the program is automatically started when the Windows is booted. If you select “Execute SUNGIL Access Manager on Background”. when you click “Exit”, the program is reduced to a tray icon and runs on the background.
- 1.2 You can change the background color of SAM with “Color Theme”
- 1.3 If you have the other user with your PC, you can change to the other user account. If you do so, SAM will restart.

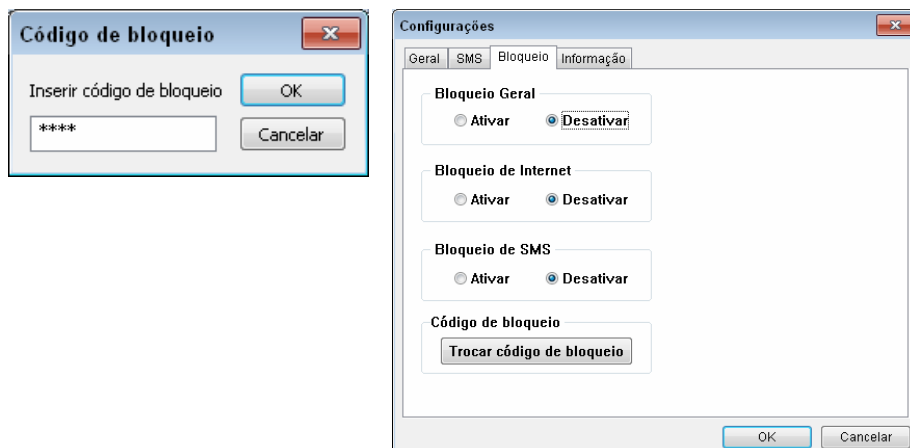
2. SMS Settings



- 2.1 You can select the incoming call alert method. If you select “Blinking Tray Icon”, the tray icon flickers. The notice pops up if you select “Auto Pop-up”, or an alert tone sounds if you select “Sound prompt”. Or, you can select all the options.
- 2.2 If “Auto Delete” is “On”, when the memory is full, the program automatically deletes the messages in FIFO (First In First Out) to save a new message. If it is “Off”, the messages are not deleted, and no new message is saved.
- 2.3 In “Save Option (Default)”, you can select “PC” or “Modem” as the default memory for messages.
- 2.4 If you select “Use” in “Spam Message Settings”, the messages containing the specific number and word are automatically saved in the “Spam message” box. You can add, edit or delete the numbers to be filtered with the “Add”, “Edit” or “Delete” button under the “Number” list. You can also add/edit/delete words to the filtered in the same manner.

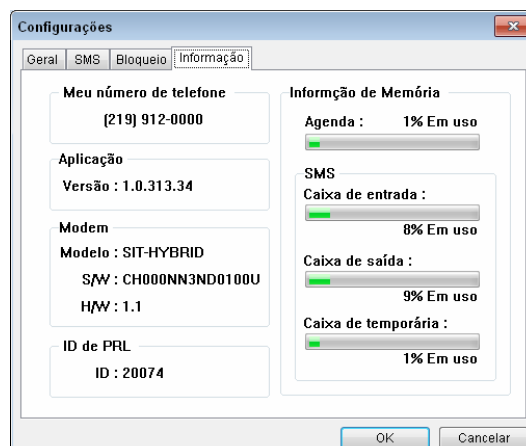
3. Lock Settings

- 3.1 It must enter with current password to set multi-lock function.



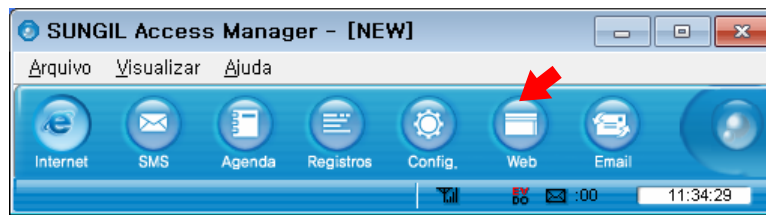
- 3.2 If “General Lock” is “On”, you need to enter the lock code every time you start the program.
- 3.3 If “Internet Lock” is “On”, you need to enter the lock code every time you access Internet.
- 3.4 With “New Lock Code”, you can change the lock code. First, you must enter the current lock code in “Current Lock Code”, enter the new lock code in “New Lock Code”, retype the new lock code in “Confirm Lock Code”, and then, click “Save”.
- 3.5 If “SMS Lock” is “On”, you need to enter the lock code for the first time you access the “SMS” menu after executing SAM.

4. Information



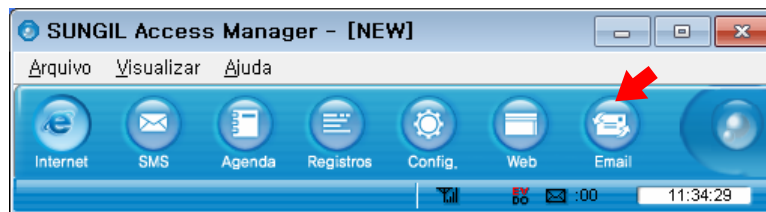
- 4.1 "My Phone Number" shows your phone number.
- 4.2 "Version" shows the SAM version, and the S/W and H/W version of the modem.
- 4.3 "PRL ID" shows the PRL ID of the modem.
- 4.4 "Memory Information" shows the used space in the modem for Address book and SMS in percentage.

8. Web



1. If you click “Web”, the Internet browser is started, moving to a specific URL.

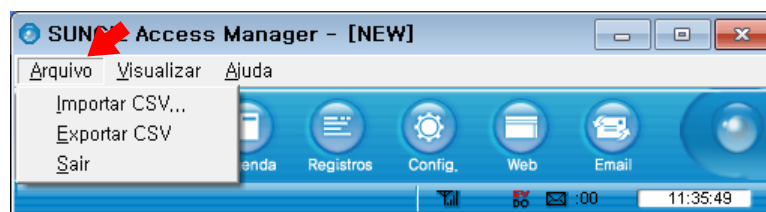
9. Email



1. The Email client or the web mail selected by the service provider is started.

10. Others

1. File



- 1.1 With the “CSV Import” menu, you can import an address book to SAM. Click “CSV Import”, select a csv file in the search window, and click “Open”. If the “Field Mapping” window pops up, select the matching items, and click “OK”. If import is successful, the success message is displayed.
- 1.2 With “CSV Export”, you can export the Address book in SAM to the PC. Select a folder and a file name, and click “Save”.
- 1.3 Click “Exit” to exit SAM. If you have selected “Execute SUNGIL Access Manager on Background” in “General” in “Settings”, SAM is not exited but reduced into a tray icon.

2. View



2.1 You can select any submenu from the “View” menu on the menu bar.

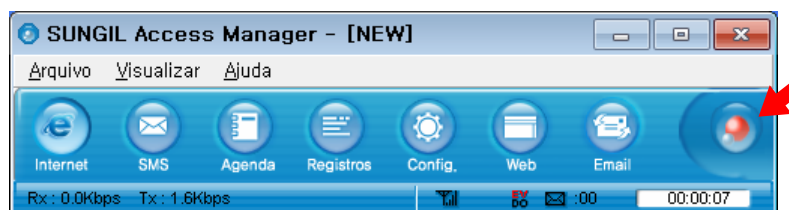
3. Help



3.1 You can view description on a function with “Quick Guide”.

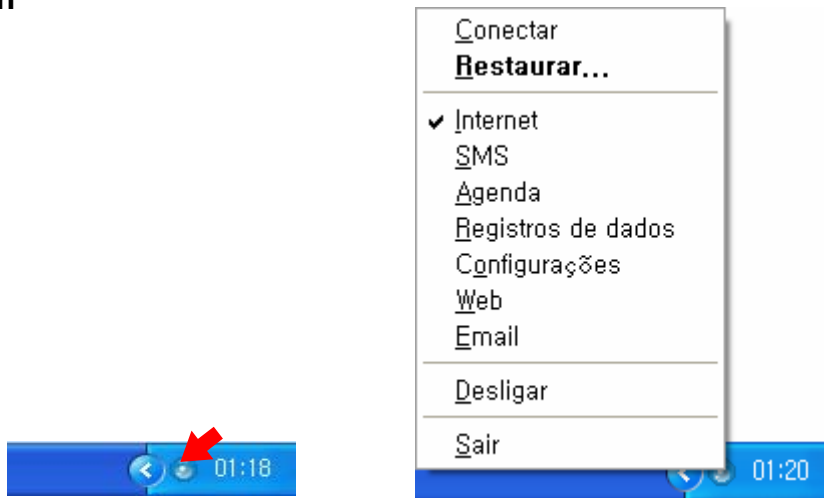
3.2 If you select “About”, the SAM version and the Home address of Sungil Telecom are displayed.

4. Internet Access Status Icon



4.1 The Internet Access Icon is activated if the system is accessed to Internet. If you click the icon, the customer site is displayed.

5. Tray Icon



- 5.1 The tray icon indicates if the modem is plugged in. Right-click the tray icon and select “Restore” to enlarge the SAM window. Select “Connect” to access Internet, or ‘Exit” to exit the SAM program. To power off the modem, click “Power Off”. When the modem is powered off, click “Power On” to power on the modem.

6. Mass Storage



- 6.1 To use the Mass Storage function of the modem, Move the sliding switch(at the front of the modem) to the left side. The modem LED is in red as the modem is being booted. After booting the LED will be changed Red, Orange or Green as the signal strength.
- 6.2 If you wish to use the Mass Storage function while using another function of the modem with SAM, disconnect Internet and Move the sliding switch(at the front of the modem) to the right side.
- 6.3 [Be caution please. This feature does not give you the warning message.](#)

11. Specification

Main Operation Chip	MSM6500
CDMA Standard	IS-856(1xEVDO), TIA/EIA/IS-2000, IS-98E, Backwards compatibility with IS-95 A/B
Band Designation	1X/EV-DO : 800/1900 MHz
Transmit Band	824 ~ 849 MHz / 1850 ~ 1910 MHz
Receive Band	869 ~ 894 MHz / 1930 ~ 1990 MHz
Data Rate	Download: Max 2.4Mbps, Upload: Max 153Kbps
SMS	Support MO & MT
Transmit Power	Typical Data Call Current(Talk Mode) : 410mA(1x&EVDO), (Max PWR Current : 640mA(1x&EVDO) Standby : 150mA(1xEV-DO/IS2000 Hybrid Mode)
LED	2 LED(Power)
Power Supply	+3.3V DC (ExpressCard Power)
Interface Type	PCI Express Port
Software Interface	IS-707.3 AT Command , Diag protocol
Dimension	Length: 78.6, Width: 33, Depth: 5.1 (mm)
Weight	Net(TBD 20g),Gift box(TBD kg)
Operating Temperature	-20°C to +60°C
Storage temperature	-30°C to +65°C
Humidity	5% to 95%(non-condensing)
External Memory	Supports to support Mass Storage to 128Mbyte.

RF EXPOSURE INFORMATION

THIS CDMA DONGLE MEETS THE GOVERNMENT'S REQUIREMENTS FOR EXPOSURE TO RADIO WAVES.

Your CDMA DONGLE is a radio transmitter and receiver. It is designed and manufactured not to exceed the emission limits for exposure to radio frequency (RF) energy set by the Federal Communications Commission of the U.S. Government. These limits are part of comprehensive guidelines and establish permitted levels of RF energy for the general population. The guidelines are based on standards that were developed by independent scientific organizations through periodic and thorough evaluate on of scientific studies. The standards include a substantial safety margin designed to assure the safety of all persons, regardless of age and health.

The exposure standard for wireless devices employs a unit of measurement known as the Specific Absorption Rate, or SAR. The SAR limit set by the FCC is 1.6 W/kg.*Tests for SAR are conducted with the device transmitting at its highest certified power level in all tested frequency bands. Although the SAR is determined at the highest certified power level, the actual SAR level of the device while operating can be well below the maximum value. This is because the phone is designed to operate at multiple power levels so as to use only the power required to reach the network. In general, the closer you are to a wireless base station antenna, the lower the power output. Before a wireless device is available for sale to the public, it must be tested and certified to the FCC that it does not exceed the limit established by the government adopted requirement for safe exposure.

The highest SAR value for this CDMA Dongle is **1.38 W/kg (CDMA CELLULAR) & 1.34 W/kg (CDMA PCS)**. The FCC has granted an Equipment Authorization for this CDMA Dongle with all reported SAR levels evaluated as in compliance with the FCC RF exposure guidelines. SAR information on this model phone is on file with the FCC and can be found under the Display Grant section of [http://www.fcc.gov /oet / fcc id](http://www.fcc.gov/oet/fccid) after searching on **FCC ID : R2NSEC-3189**.

Additional information on Specific Absorption Rates (SAR) can be found on the Cellular Telecommunications & Internet Association (CTIA) web-site at <http://phonefacts.net>.*In the United States and Canada, the SAR limit for mobile phones used by the public is 1.6watts/kg (W/kg) averaged over one gram of tissue. The standard incorporates a substantial margin of safety to give additional protection for the public and to account for any agitations in measurements.

In August 1996 the Federal Communications Commission (FCC) of the United States with its action in Report and Order FCC 96-326 adopted an updated safety standard for human exposure to radio frequency (RF) electromagnetic energy emitted by FCC regulated transmitters. Those guidelines are consistent with the safety standard previously set by both U.S. and international standards bodies. The design of this phone complies with the FCC guidelines and these international standards.

For more information about RF exposure, please visit the FCC website at www.fcc.gov

WARNING! Read this information before use

Caution

Modifications not expressly approved by the party responsible for compliance could void the user's authority to operate the equipment.

FCC Compliance Information

This device complies with Part 15 of FCC Rules. Operation is subject to the following two conditions: (1) This device may not cause harmful interference, and (2) This device must accept any interference received. Including interference that may cause undesired operation.

Information to User

This equipment has been tested and found to comply with the limits for a Class B digital device, pursuant to part 15 of the FCC Rules. These limits are designed to provide reasonable protection against harmful interference in a residential installation. This equipment generates, uses and can radiate radio frequency energy and, if not installed and used in accordance with the instructions, may cause harmful interference to radio communications. However, there is no guarantee that interference will not occur in a particular installation. If this equipment does cause harmful interference to radio or television reception, which can be determined by turning the equipment off and on, the user is encouraged to try to correct the interference by one or more of the following measures:

- Reorient or relocate the receiving antenna.- Increase the separation between the equipment and receiver.
- Connect the equipment into an outlet on a circuit different from that to which the receiver is connected.
- Consult the dealer or an experienced radio/ tv technician for help.