

# *SAM User Manual*

*Rev 0.1*

*EpiValley*

*October 01, 2007*

## Revision History

<b>Rev 0.1</b>	<b>2007. 08. 22</b>	<b>First issue</b>	<b>Hyeong Seop Yoon</b>
----------------	---------------------	--------------------	-----------------------------

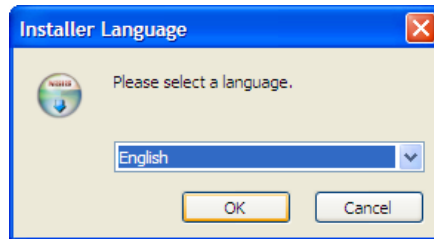
# Contents

<b>1. Installation &amp; Setup</b> .....	<b>4</b>
<b>2. Getting Started</b> .....	<b>10</b>
<b>3. UIM</b> .....	<b>11</b>
<b>4. Internet</b> .....	<b>11</b>
<b>5. Voice</b> .....	<b>13</b>
1. Call placing/receiving buttons .....	13
2. Call placing/receiving display .....	14
<b>6. SMS</b> .....	<b>14</b>
1. Send .....	14
3. Sent .....	17
4. Temporary .....	18
5. Spam .....	19
6. Voice .....	20
<b>7. Address</b> .....	<b>21</b>
1. List .....	21
2. Search .....	22
3. Group .....	22
<b>8. Log</b> .....	<b>23</b>
1. Call Log .....	23
2. Internet Log .....	24
<b>9. Settings</b> .....	<b>25</b>
1. General Settings .....	25
2. Call Settings .....	25
3. SMS Settings .....	26
6. UIM Settings .....	27
7. Lock Settings .....	27
8. Information .....	28
<b>10. Web</b> .....	<b>28</b>
<b>11. Email</b> .....	<b>29</b>
<b>12. Others</b> .....	<b>29</b>
1. File .....	29
2. View .....	29
3. Help .....	30
4. Internet access status icon on the top right of the program emulator .....	30
5. Tray Icon .....	30
6. Mass Storage .....	30
<b>13. Troubleshooting</b> .....	
<b>14. Specification</b> .....	
<b>15. Supplied Accessory</b> .....	

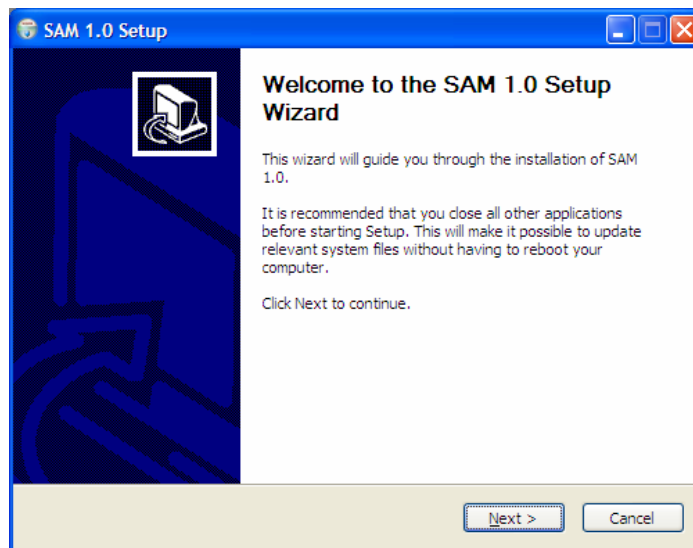
# 1. Installation & Setup

## 1. SAM Installation

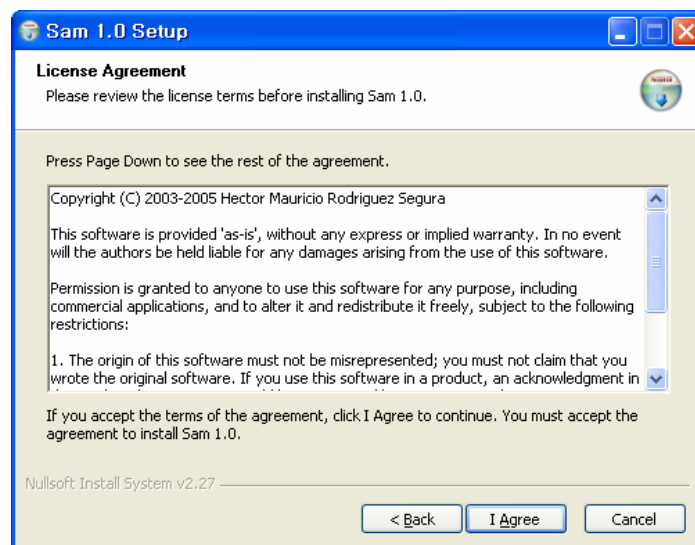
1.1 Connect the USB modem to PC (Fixed to USB memory in default). The mass storage driver is installed automatically. You can start installation by clicking Setup.exe in the USB Memory folder.



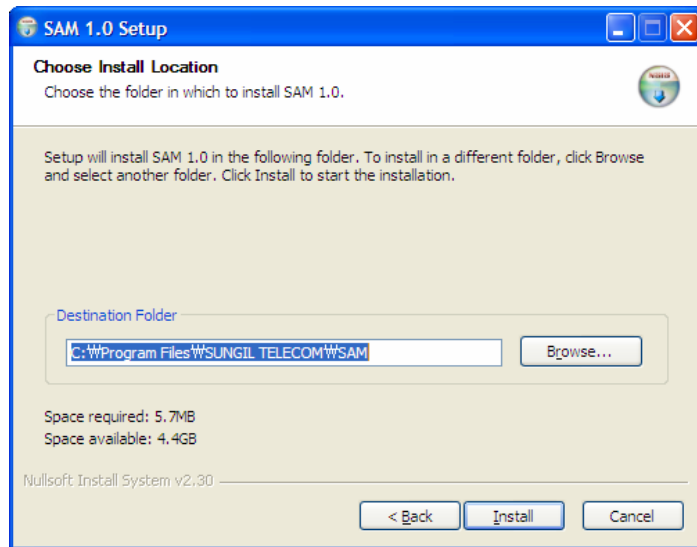
1.2 To continue installation, click "Next".



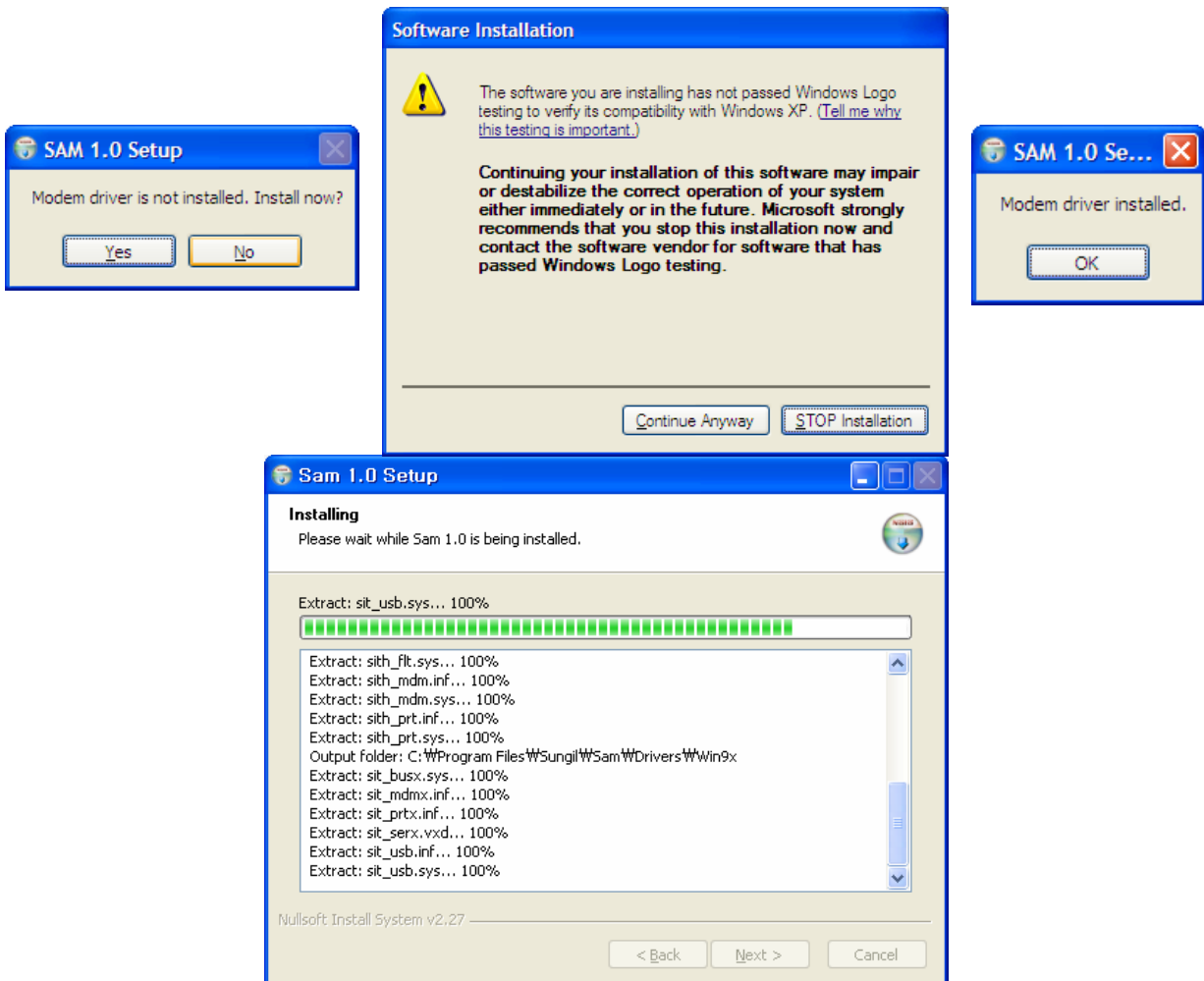
1.3 Click "I Agree".



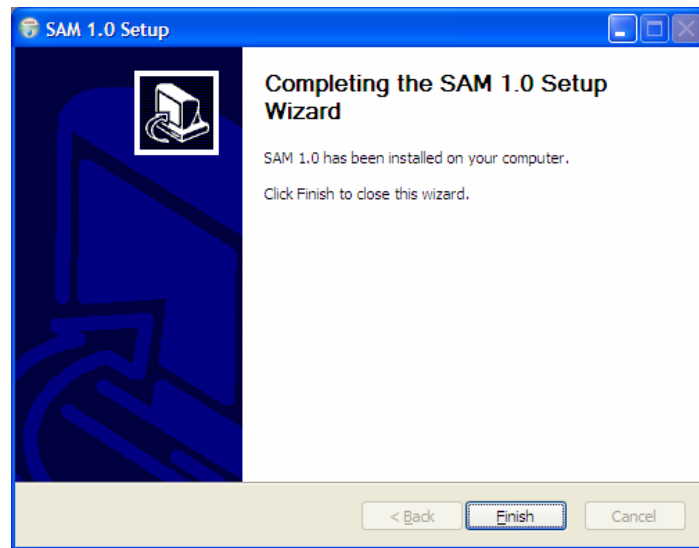
1.4 Select the folder for the program.



1.5 In order to use the modem for the first time, you need to install the device driver. Click "Yes", and in the installation message box, click "Continue Anyway". If the device driver is installed, click "OK" and wait until installation process is completed.



1.6 If SAM is installed successfully, click “Finish”.

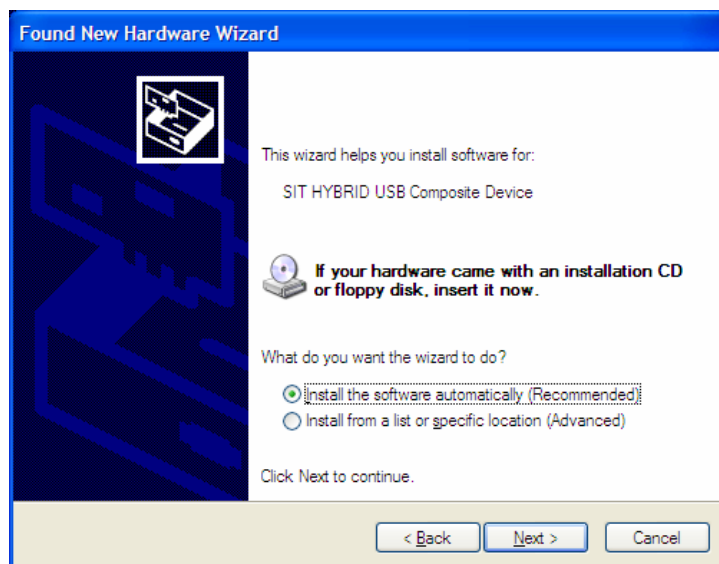


## 2. USB Modem Device Installation

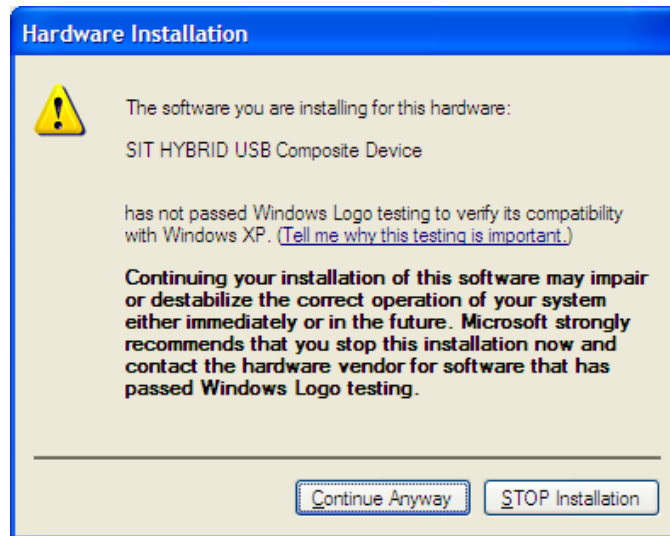
2.1 After installation of SAM, press the LED button of the USB modem. Then, the New Hardware Wizard message appears to install the SIT HYBRID USB Composite Device.



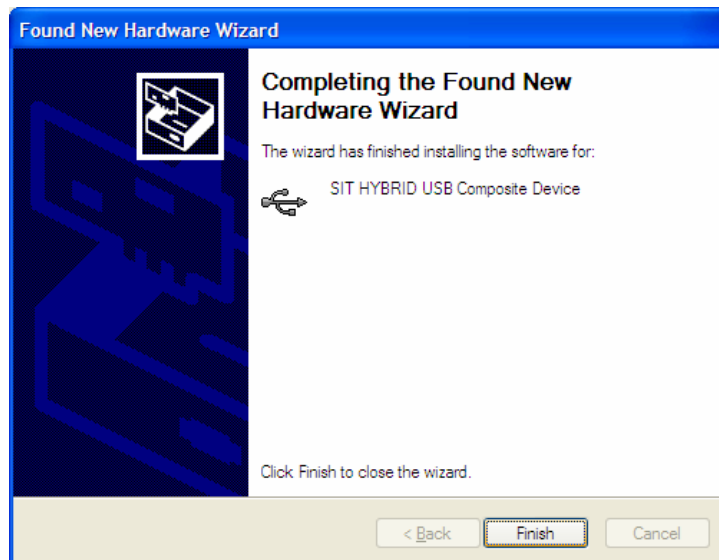
2.2 Select “Install the software automatically (Recommended)” and click “Next”.



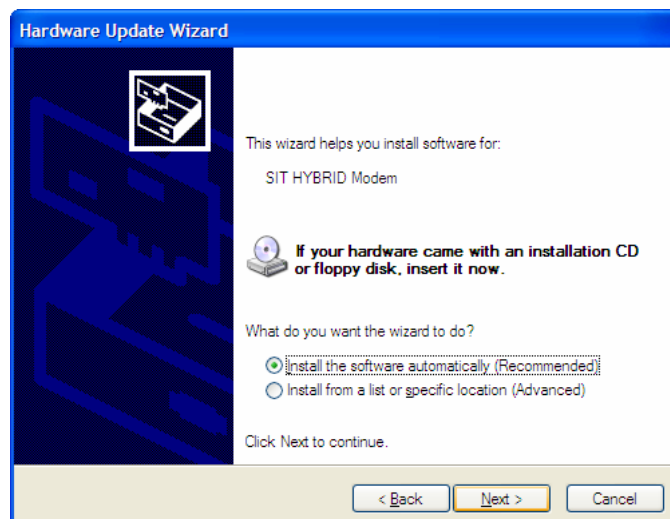
2.3 If the system finds modem driver, the “Hardware Installation” warning message appears. Click “Continue Anyway”.



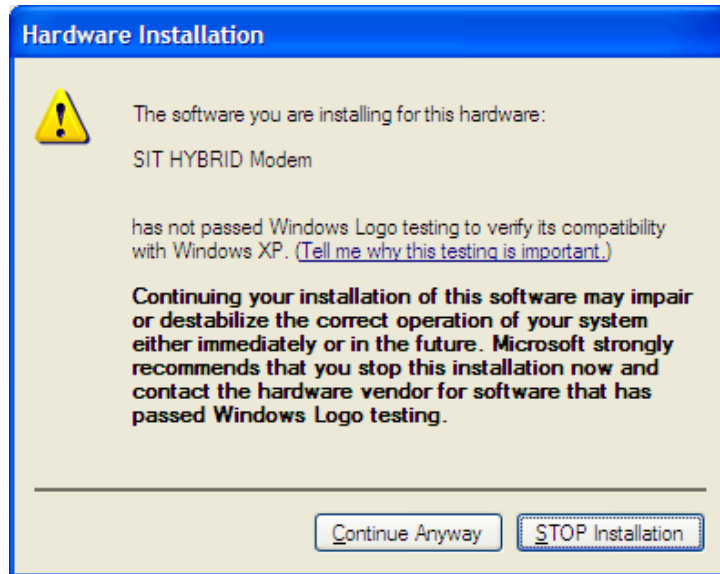
2.4 If installation is complete, click “Finish”.



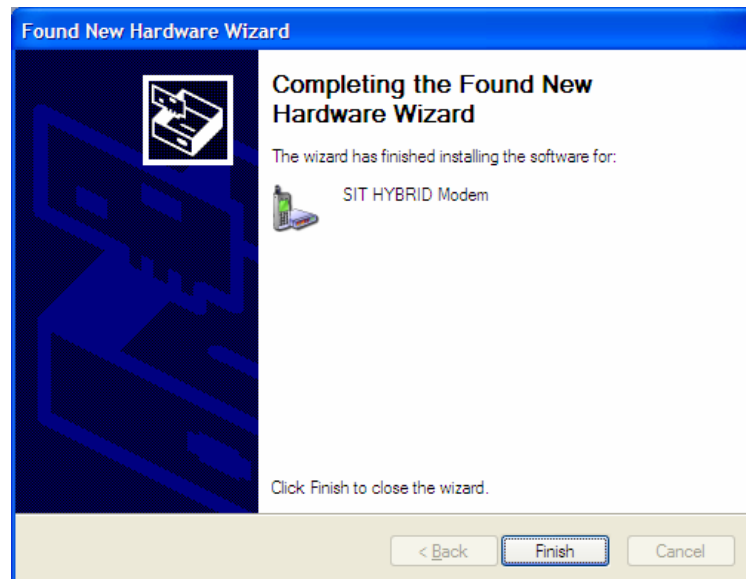
2.5 The New Hardware Wizard appears to install the SIT HYBRID Modem. Installation procedure is the same with that of SIT HYBRID USB Composite Device. Click “Next”.



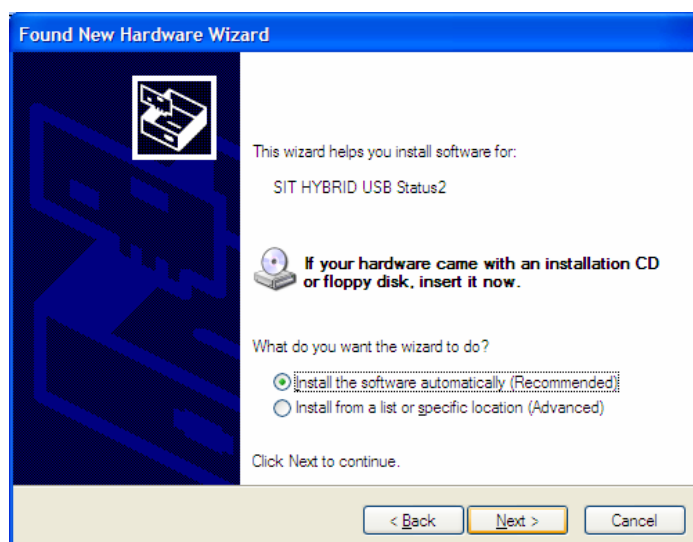
2.6 Click "Continue Anyway".



2.7 Click "Finish".

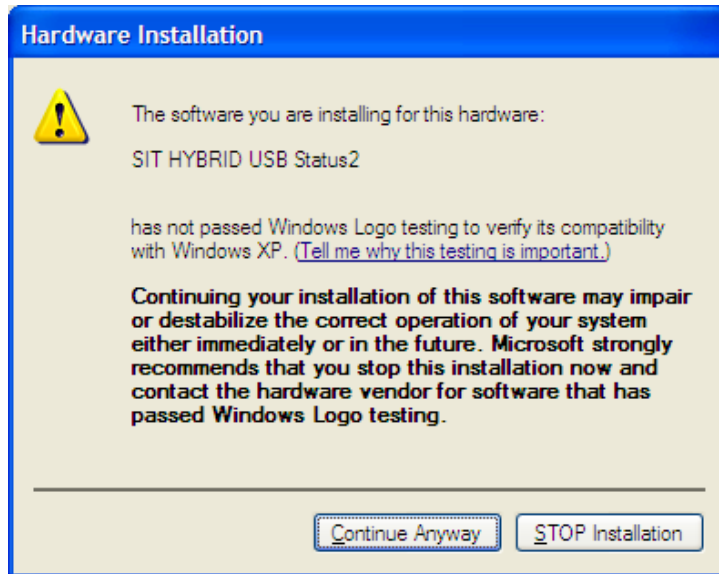


2.8 The New Hardware Wizard appears to install the SIT HYBRID USB Status2. Installation procedure is the same with that of SIT HYBRID USB Composite Device. Click "Next".

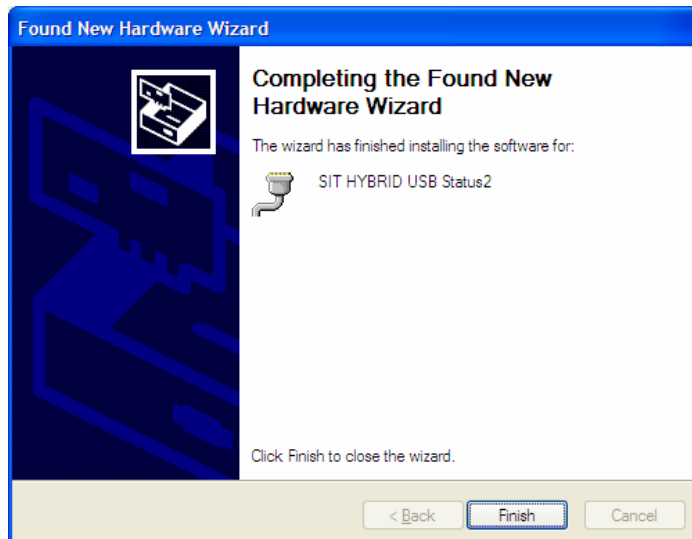




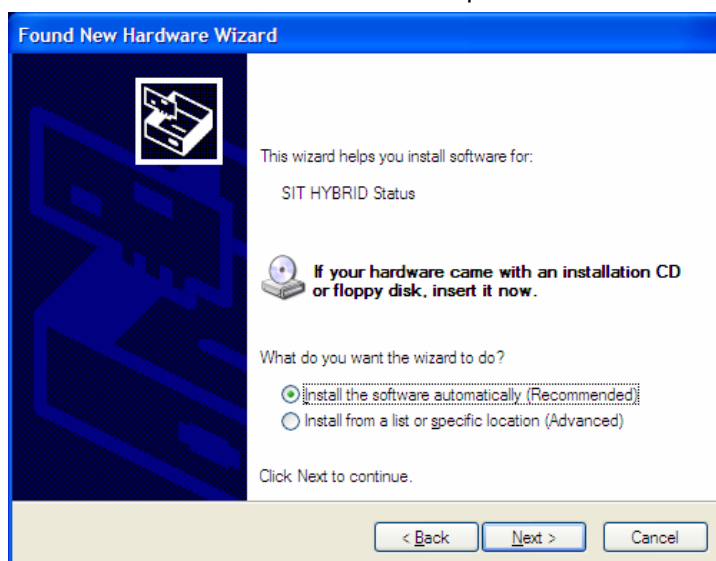
2.9 Click "Continue Anyway".



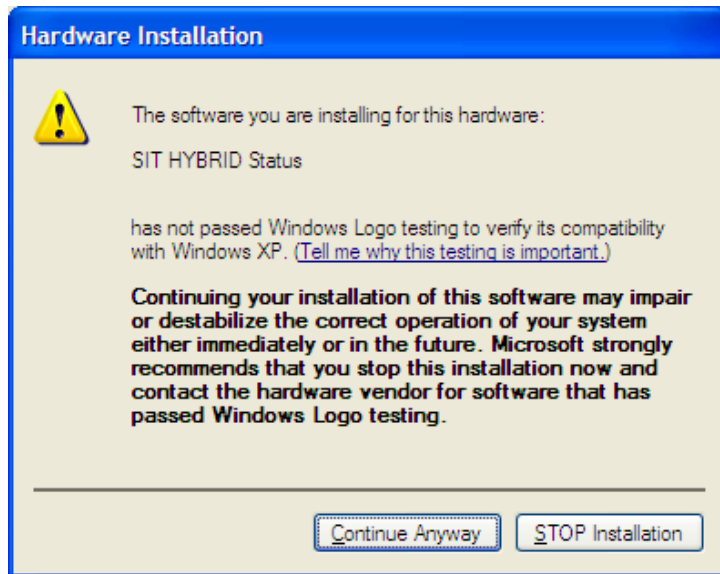
2.10 Click "Finish".



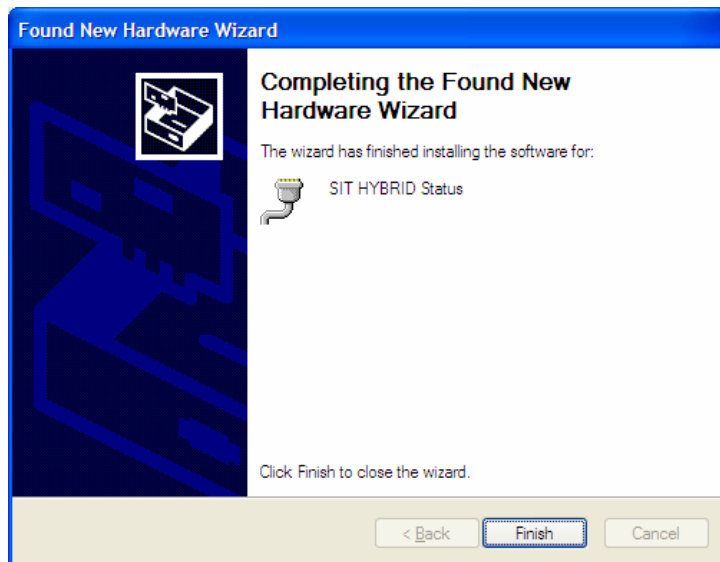
2.11 Then, the New Hardware Wizard message appears to install SIT HYBRID Status. The installation procedure is the same with that of SIT HYBRID USB Composite Device. Click "Next".



2.9 Click "Continue Anyway".



2.10 Click "Finish".

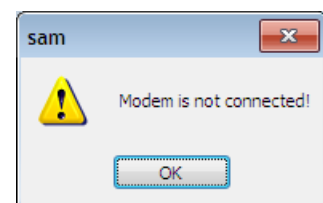


## 2. Getting Started

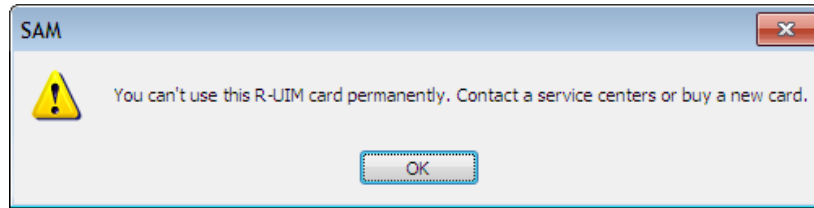
1. Plug the modem in the USB port, and select "sam.exe". Then the following initial window appears.



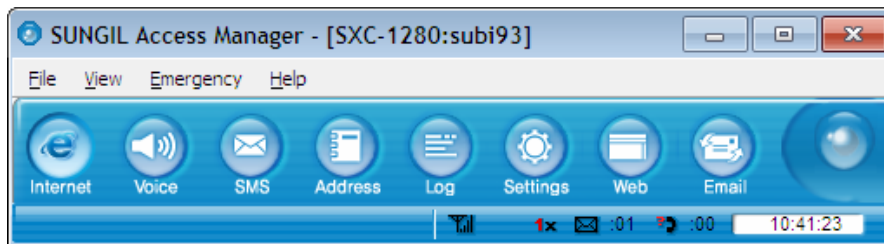
2. If the modem is not properly plugged in, the following message appears.



3. If UIM is not installed normally in the modem, the following message is displayed.



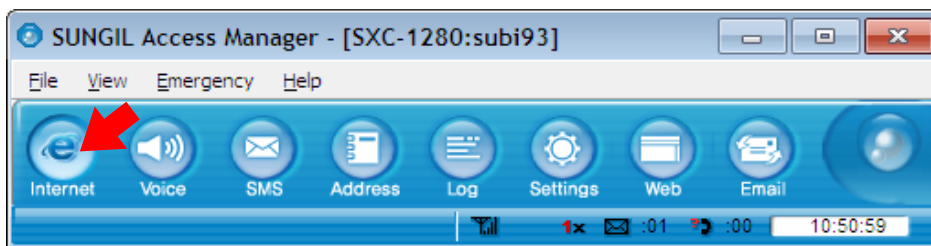
4. If the system finds the modem, SAM is started as in the following figure.



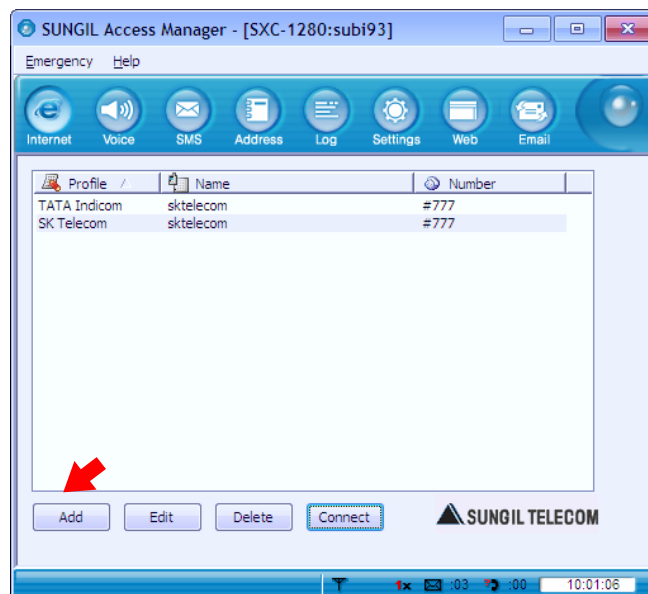
### 3. UIM

### 4. Internet

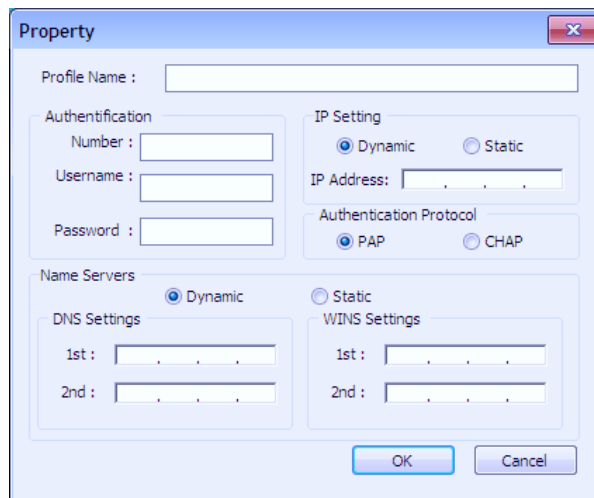
1. To access Internet, click "Internet".



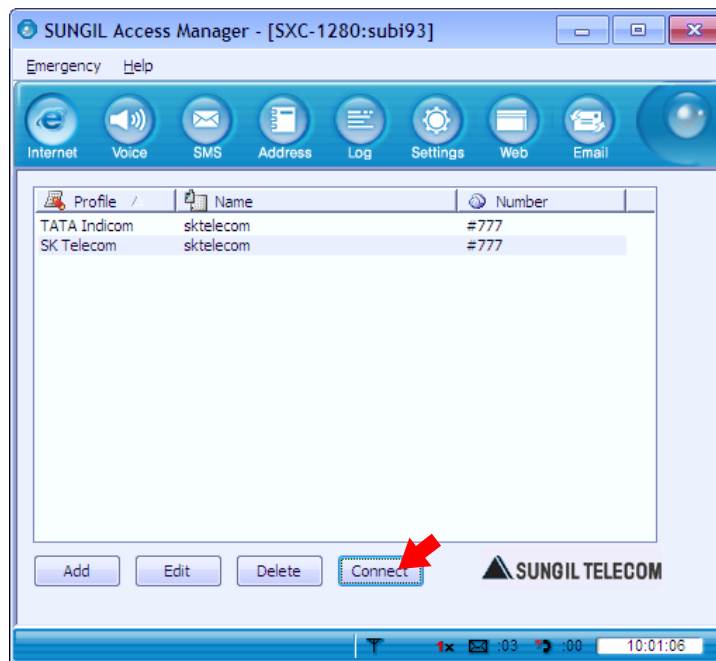
2. Click "Add" to create a connection profile.



3. Set the profile for connection.



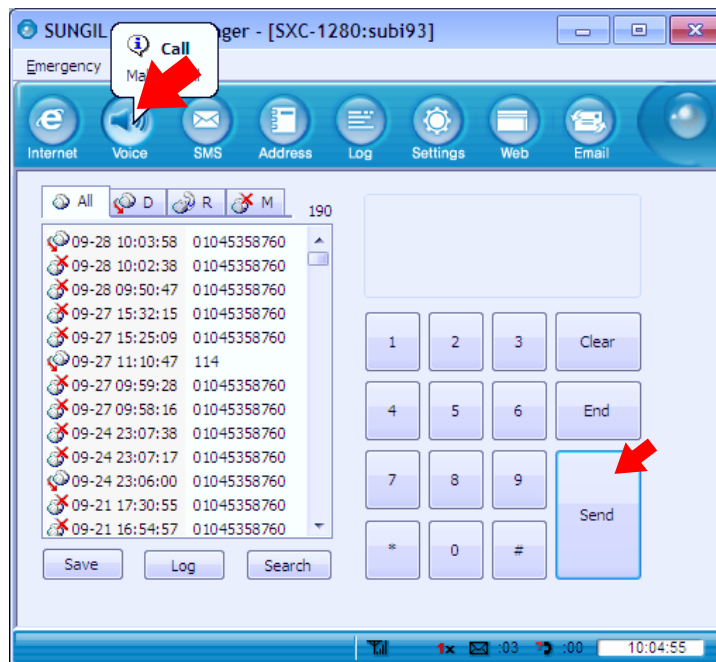
4. Select a profile from the list, and click "Connect".



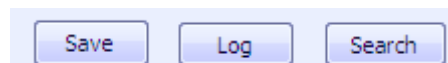
5. If Internet is accessed, "Hybrid Modem Connected" is displayed in the Status bar (bottom of the program window). Rx or Tx status appears, and the Internet connection icon appears in the top right of the program window.
6. If you click "Web" after the system is connected to Internet, the Internet browser appears. If you click "Email", the Email Client or the web mail selected by the service provider is started.
7. In order to disconnect from Internet, click "Disconnect", and if the confirmation window appears, click "Yes".

## 5. Voice

### 1. Call placing/receiving buttons

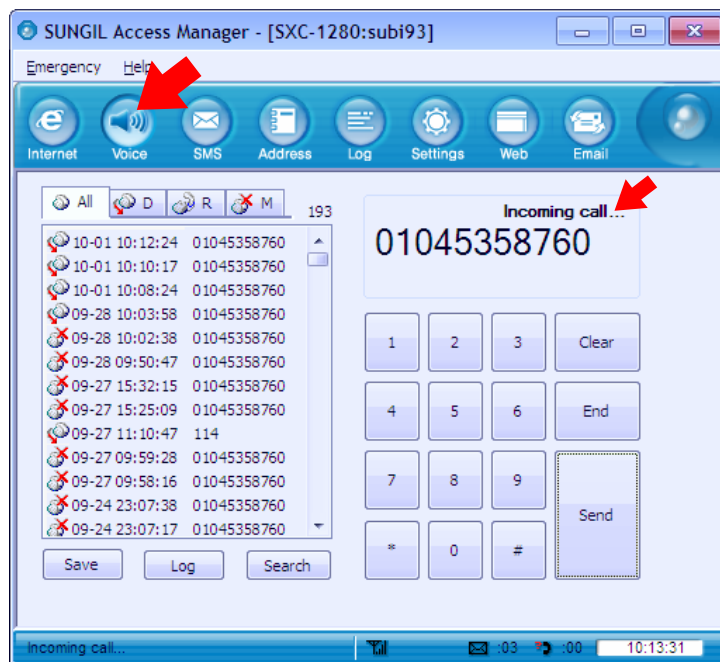


- 1.1 Enter the phone number with the number pad or the keyboard, and click “Send”. Click “End” to finish the call.
- 1.2 To receive a call, click “Send”, and to end a call, click “End”.
- 1.3 You can control the volume using the control button during a call.
- 1.4 If you click “Mute”, your voice is muted. If “Mute” is selected, the button is changed to “Unmute”. Click “Unmute” if you wish to clear Mute.
- 1.5 To save the phone number you have entered or that of the caller in the Address book, click “Add”.



- 1.6 To view the call history, click “Log”. Refer to “1. Call Log” in chapter “8. Log”.
- 1.7 To search a number in the Address book, click “Search”. Refer to chapter “6. Address”.

## 2. Call placing/receiving display

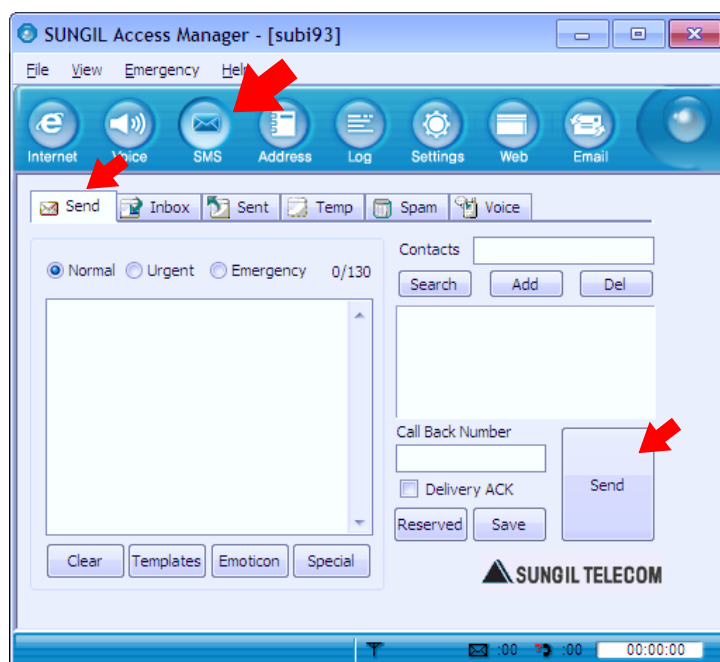


2.1 The caller ID of the incoming call is displayed.

2.2 The current call status is displayed. "Incoming call" is displayed if a call is incoming. After connected, the call time is displayed.

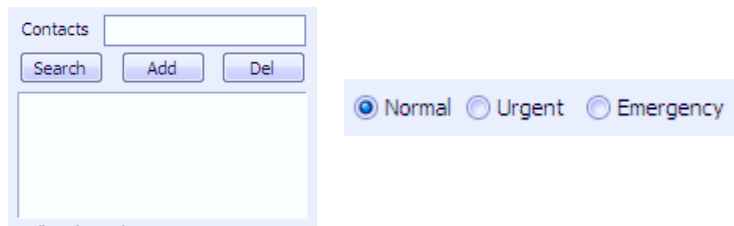
## 6. SMS

### 1. Send



1.1 To send a message, click "SMS", and select "Send".

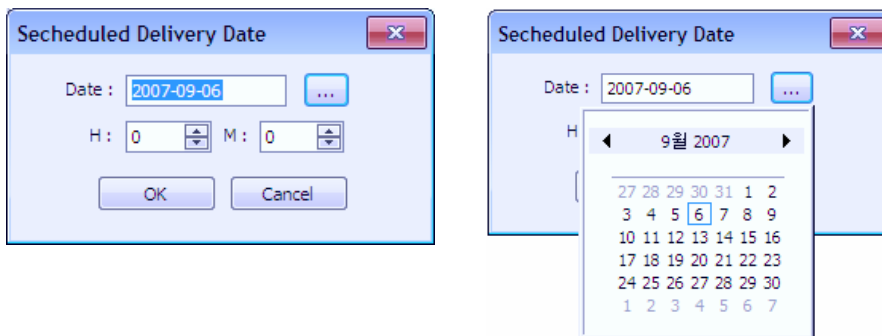
1.2 Write a message, enter the numbers of the receivers one by one, and click “Add”. To delete a number from the list, select the number and click “Del”.



1.3 Select “Normal”, “Urgent” or “Emergency” for the priority of the message, and click “Send”.

1.4 To send a message to numbers of users, the window shows the current number of receivers.

1.5 To send a message at the designated date and time, click “Reserved”. Select Year, Month, Day, Hour and Minute, and click “OK”. The reserved message is saved in the Temporary Box.

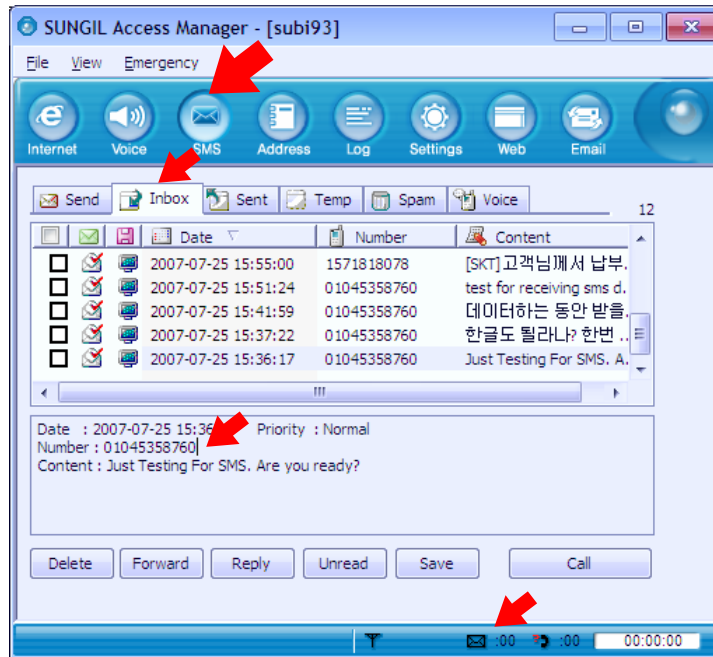


► You can use the following functions with the buttons provided under the list or by right-clicking the mouse button on an entry in the list.

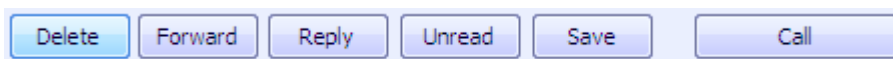


- **Search** : You can search numbers in the Address Book.
- **Log** : You can add numbers searched in Call Log.
- **Add** : You can add addresses in the sender list.
- **Del** : You can delete entries from the sender list.
- **Clear** : The message you have written is all cleared.
- **Emoticon** : You can select/edit emoticons and insert them in the message. To insert an emoticon, double-click the emoticon, or select and click the “Insert” button. To edit an emoticon, click “Edit”, edit the emoticon, and click “Save”.
- **Templates** : You can select/edit templates to enter a message.
- **Special Characters** : You can select special characters to enter a message.
- **Reserved** : You can set the date and time for a reserved message.
- **Save** : The message is saved in the “Temporary” box.
- **Send** : The message is transmitted.

## 2. Inbox



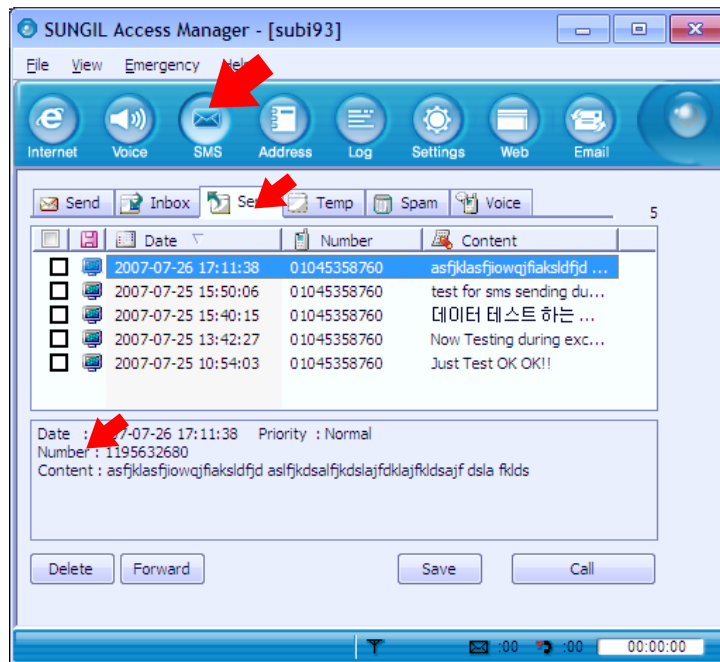
- 2.1 If a message is incoming, an auto popup message appears, or the tray icon blinks, or the alert is sounded depending on your selection in “Incoming SMS Alert”. The received message is automatically saved in Inbox.  
To set the “Incoming SMS Alert” option, press the “SMS” tab in the “Settings” menu, and set “Incoming SMS Alert” option. Refer to “9. Settings” for details.
- 2.2 If there are messages you have not read, the count is indicated in the Status bar (in the bottom of the window).
- 2.3 The messages are sorted by Number, Name, Date and Content in the “Inbox” menu. The icon indicates if the message is read or unread, and if it is in the PC, UIM or Modem.
- 2.4 If you select a message, the content of the message is displayed under the list.
  - ▶ You can use the following functions with the buttons provided under the list or by right-clicking the mouse button on an entry in the list.



- **Delete** : The selected messages are deleted from the list.
- **Forward** : Select this button to forward a message to other persons. The "Send" menu is automatically selected, and the content is automatically entered.
- **Reply** : Select this button to send a reply. The "Send" menu is automatically selected, and the number of receiver is added to the “Contacts” list.
- **Unread** : You can change message status from “Read” to “Unread”.
- **Save** : You can add the message senders in the Address book. Enter data, select location (PC, Modem or UIM), and click “OK”.
- **Call** : Select this button to make a call to the sender of a message. The “Voice” menu is automatically selected, and the number of receiver is automatically entered.



### 3. Sent



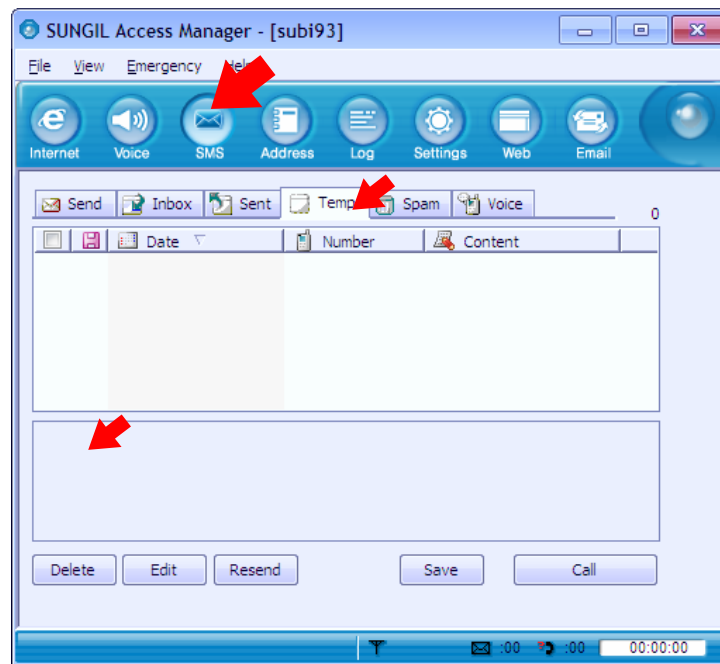
3.1 In the “Sent” menu, the sent messages are sorted by Number, Name, Date and Content. You can identify the location of the messages (PC, UIM or Modem) with the icons.

- ▶ You can use the following functions with the buttons provided under the list or by right-clicking the mouse button on an entry in the list.



- **Delete** : The selected messages are deleted from the list.
- **Forward** : Select this button to forward a message to other persons. The "Send" menu is automatically selected, and the content is automatically entered.
- **Save** : You can add the message senders in the Address book. Enter data, select location (PC, Modem or UIM), and click “OK”.
- **Call** : Select this button to make a call to the sender of a message. The “Voice” menu is automatically selected, and the number of receiver is automatically entered.

## 4. Temporary



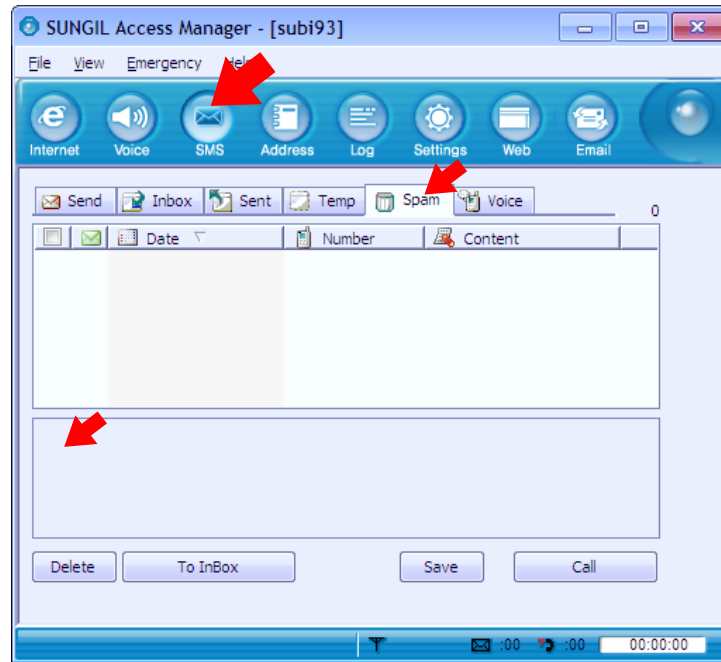
4.1 In the “Temporary” menu, the failed messages or unsent messages are listed.

- ▶ You can use the following functions with the buttons provided under the list or by right-clicking the mouse button on an entry in the list.



- **Delete** : The selected messages are deleted from the list.
- **Edit** : Select this button to edit and send the messages selected in the list. The "Send" menu is automatically selected, and the content is automatically entered.
- **Resend** : The selected messages are retransmitted.
- **Save** : You can add the message senders in the Address book. Enter data, select location (PC, Modem or UIM), and click “OK”.
- **Call** : Select this button to make a call to an entry in the list. The “Voice” menu is automatically selected, and the number of receiver is automatically entered.

## 5. Spam



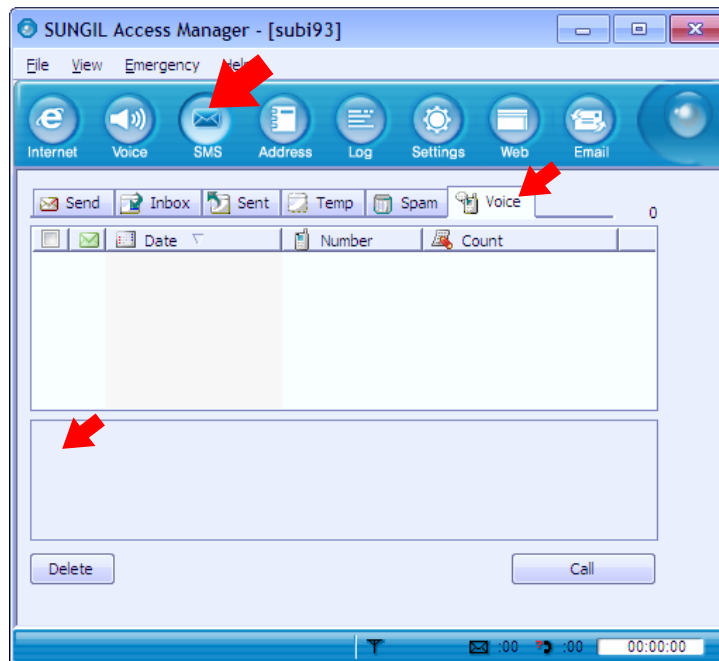
- 5.1 In the "Spam" menu, the filtered messages containing specific numbers or words are listed. The messages are sorted by Date, Number, and Content.
- 5.2 You can select the numbers or words you wish to filter as spam message in the "SMS" tab of the "Settings" menu. You can select "Use" or "Not Use" in "Spam Message Settings", and add/edit/delete the Spam numbers with the "Add", "Edit" or "Delete" button in the Number list. You can also add/edit/delete the Spam words with the "Add", "Edit" or "Delete" button in the Word list.
- ▶ You can use the following functions with the buttons provided under the list or by right-clicking the mouse button on an entry in the list.



- **Delete** : The selected messages are deleted from the list.
- **To InBox** : The received messages are moved to "Inbox".
- **Save** : You can add the message senders in the Address book. Enter data, select location (PC, Modem or UIM), and click "OK".
- **Call** : Select this button to make a call to an entry in the list. The "Voice" menu is automatically selected, and the number of receiver is automatically entered.

## 6. Voice

---



6.1 The voice mail messages from BTS are displayed in the “Voice” menu. You can sort the messages by Number, Data and Content.

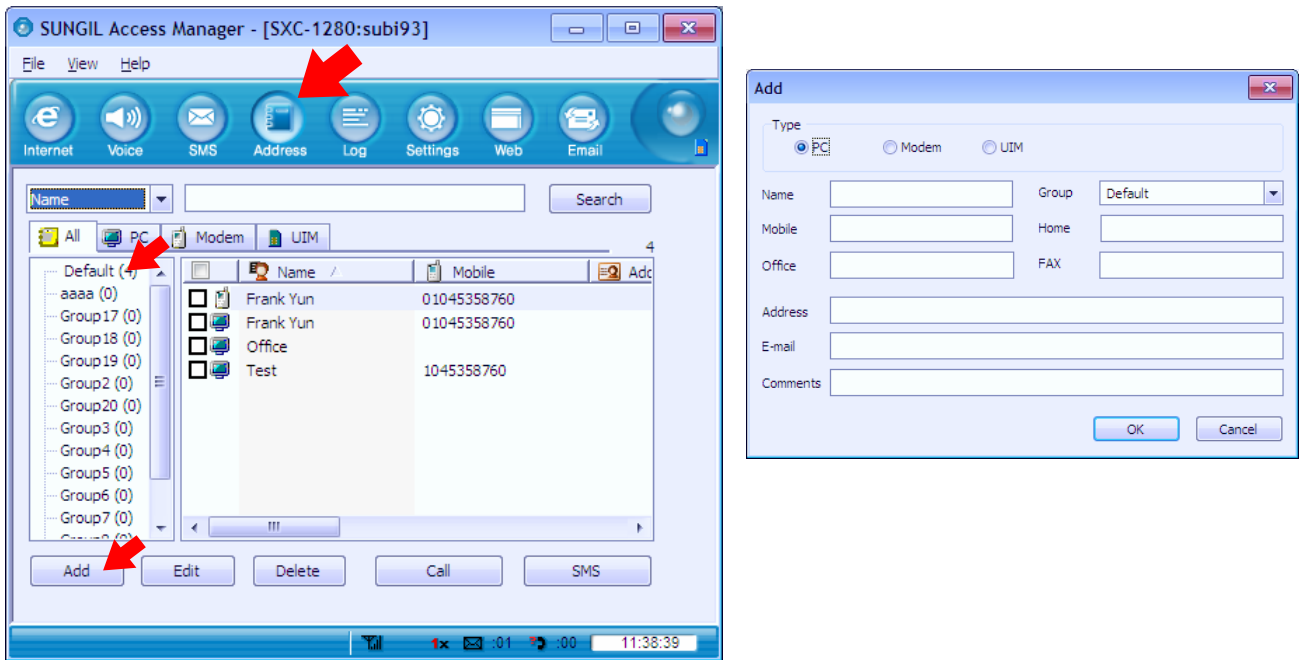
- ▶ You can use the following functions by right-clicking the mouse or with the buttons at the bottom of the list.



- **Delete** : The selected messages are deleted from the list.
- **Call** : If you wish to make a call to “Voice Mail Center” from BTS or there is no number from BTS, make a call to “Voice Mail Center” set in “SMS Settings”, and check the voice mails. Refer to “9. Settings” for details.

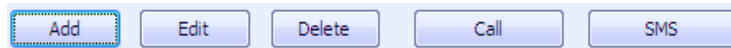
# 7. Address

## 1. List



1.1 To save a phone number in the Address book, click “Add” under the phone numbers list. Select the location between “PC”, “Modem” and “UIM”, enter Name, Mobile, Group, Home, Office, FAX, Address, E-mail and Comment, and then, click “OK”.

- ▶ You can use the following functions with the buttons provided under the list or by right-clicking the mouse button on an entry in the list.



- **Add:** Add a new number in the Address book.
- **Edit :** To modify a number or other data, click “Edit”, modify contents, and then, click “OK”.
- **Delete :** To delete a number, select the checkbox of the entry in the list, and click “Delete”. To delete all the entries in the list, select the checkbox on the top of the list, and click “Delete”.
- **Call :** If you click “Call” after selecting a number in the list, the “Voice” menu is selected. If a default is selected between Mobile, Home and Office number, a call is attempted to the default number. If you drag and drop “Call” to Mobile, Home or Office number a call is attempted to the selected number.
- **SMS :** If you click “SMS” after selecting a number in the list, the “SMS” menu is selected.

## 2. Search

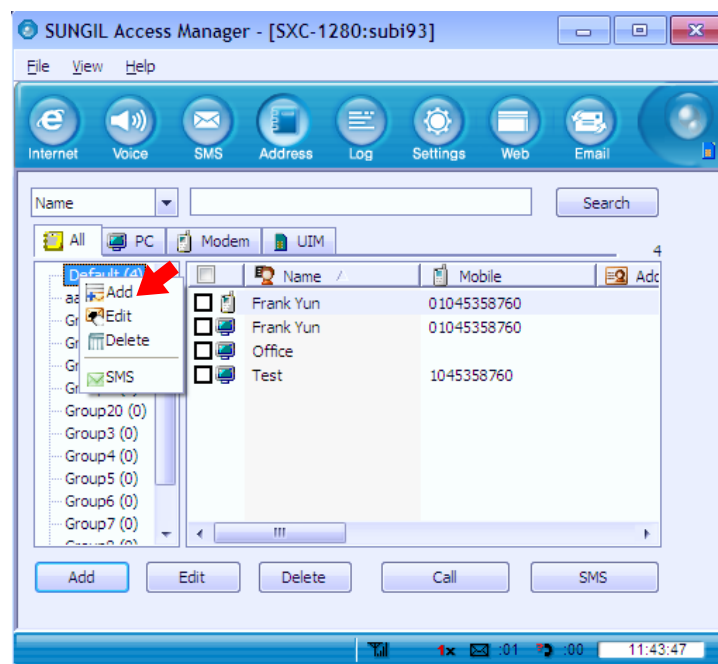
---



- 2.1 To search an entry in the list, select a field (Name, All no, Mobile, Group, Address, Home, Office, FAX, Email, or Comments) in the top left of the list, enter a name or number, and then, click “Search”. Then, the entries containing the name or number are listed.
- 2.2 You can search entries in a specific storage (PC, Modem, UIM, or All) by clicking the concerned button under the search field.

## 3. Group

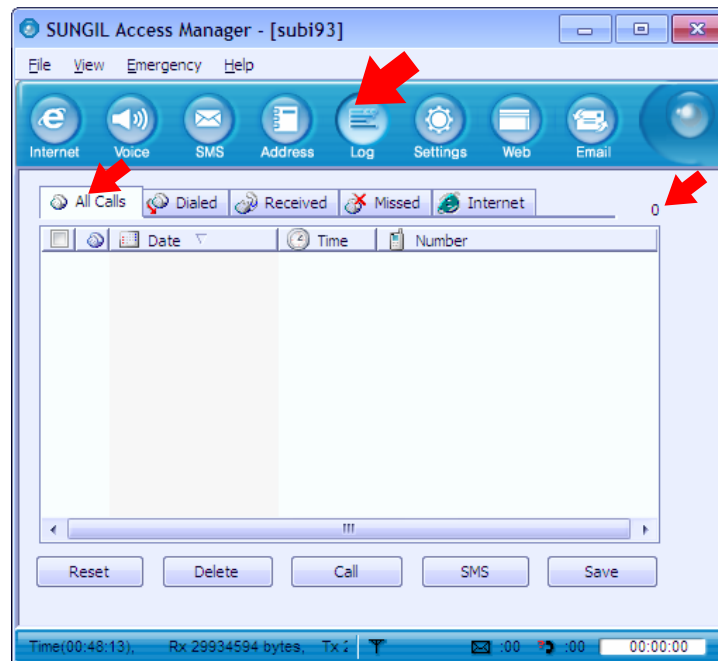
---



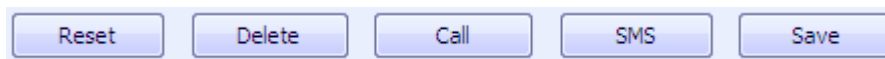
- 3.1 There are 20 groups (Group1 ~ Group20), and you can only rename the groups.
- 3.2 To move a member between groups, click the member in the list, and drag and drop to the target group folder.
  - ▶ You can use the following functions with the buttons provided under the group list or by right-clicking the mouse button on an entry in the list.
    - **Add** : Add groups.
    - **Edit** : To change the names, select the groups and click “Edit”.
    - **Delete** : You can delete groups with all the members in the groups.
    - **SMS** : To send an SMS to all the members in a group, click “SMS”. The “SMS” window is displayed, and the numbers of all the members of the group are automatically entered in “Contacts”.

## 8. Log

### 1. Call Log

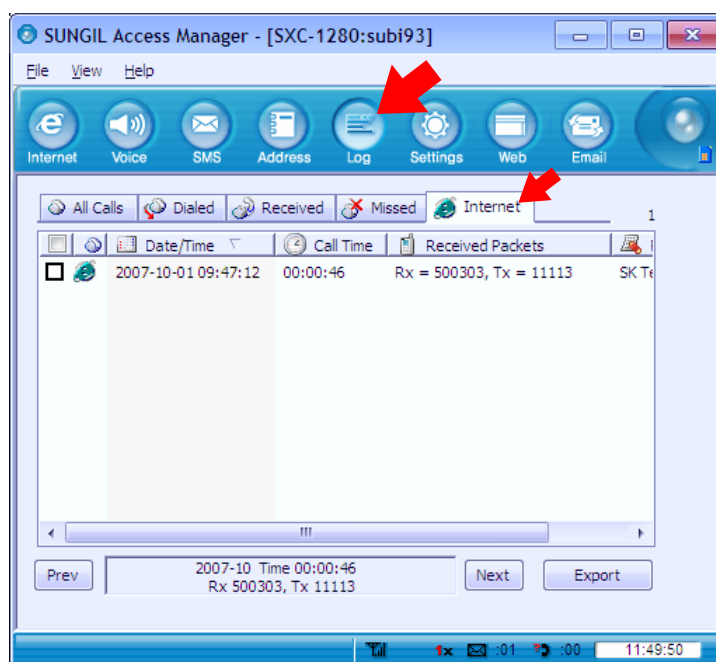


- 1.1 You can see All Calls, Dialed Numbers, Received Calls and Missed Calls. The number of entries stored in the list is displayed in the right of the window.
  - 1.2 “All Calls” shows Dialed Numbers, Received Calls and Missed Calls which can be identified by the icons. The entries can be sorted by Date, Time and Number.
  - 1.3 “Dialed Numbers” shows the numbers you have dialed.
  - 1.4 “Received Calls” shows the numbers from which you have received calls.
  - 1.5 “Missed Calls” shows the numbers from which you have missed calls.
- You can use the following functions with the buttons provided under the list or by right-clicking the mouse button on an entry in the list.

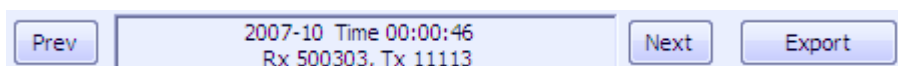


- **Reset** : You can delete all the entries of the list, and reset all the values in “Total” field to 0.
- **Delete** : The selected logs are deleted from the list.
- **Call** : If you click “Call” after selecting an entry in the list, the “Voice” menu is displayed, and the phone number is automatically entered.
- **SMS** : Select this button to forward a message to the numbers selected in the list. The “Send” menu is automatically selected in “SMS”, and the numbers are entered automatically in “Contacts”.
- **Save** : Select the numbers to add in the Address book, select the location (PC, Modem or UIM), and click “OK”.

## 2. Internet Log



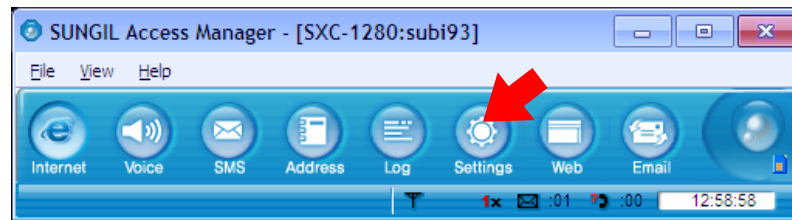
- 2.1 If you click “Internet Log” in the Call Log List, you can check the internet logs. “Total” shows the total time used, and Kbytes of the sent data and received data.
  - 2.2 The Internet Log list displays information on Internet usages such as dates, time, Tx and Rx.
  - 2.3 On the top of the Internet Log list are the total log count available and the current log count.
- ▶ You can use the following functions with the buttons provided under the list or by right-clicking the mouse button on an entry in the list.



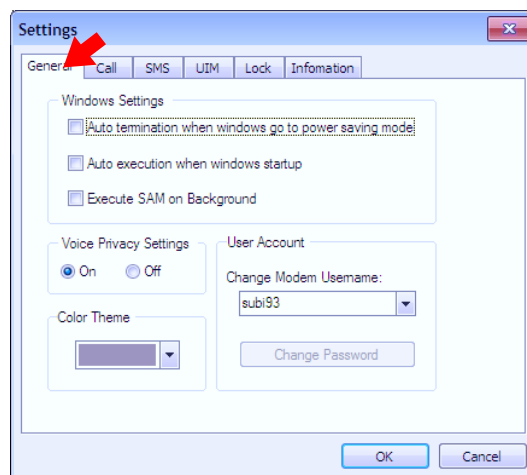
- **Prev** : You can move to the previous month.
- **Next** : You can move to the next month.
- **Export** : You can save the internet log list of the current month as the CSV files.



## 9. Settings

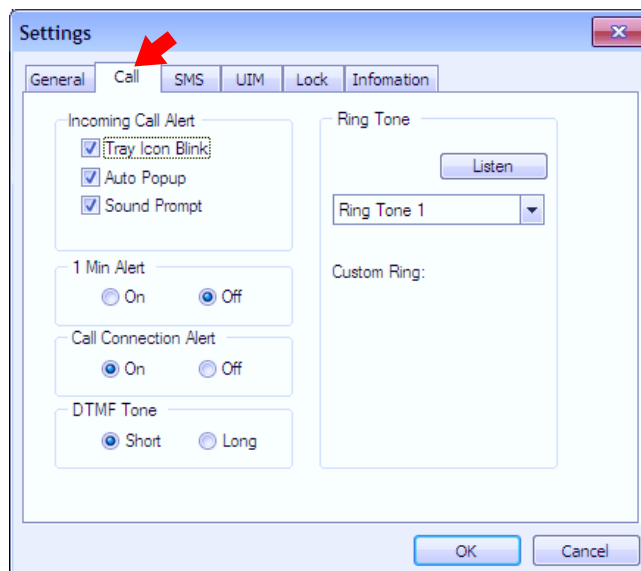


### 1. General Settings



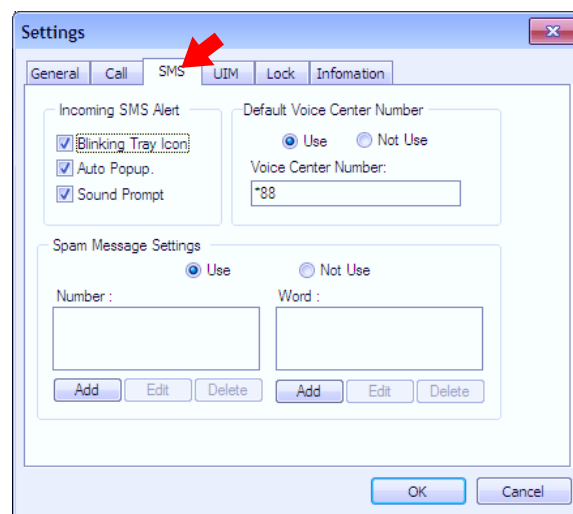
- 4.1 If you select “Auto termination when windows go to power saving mode” in “Windows Settings”. the program is automatically exited when the PC is switched to the power saving mode. If you select “Auto execution when windows start”, the program is automatically started when the Windows is booted. If you select “Execute SUNGIL Access Manager on Background”. when you click “Exit”, the program is reduced to a tray icon and runs on the background.
- 4.2 If you select “On” in “Voice Privacy Settings”, the voice data is encoded before transmitted.
- 4.3 You can change the background color of SAM with “Color Theme”.

### 2. Call Settings



- 2.1 You can select the incoming call alert method. If you select “Blinking Tray Icon”, the tray icon flickers. The notice pops up if you select “Auto Pop-up”, or an alert tone sounds if you select “Sound prompt”. Or, you can select all the options.
- 2.2 If “1 Min Alert” is “On”, you will hear an alert at every 1 min during a call.
- 2.3 If “Call Connection Alert” is “On”, you will hear an alert when the outgoing/incoming call is connected.
- 2.4 You can select “Long” or “Short” for “DTMF Tone”.
- 2.5 You can select “Ring Tone” for incoming calls. You can select the default ring tone from the “Ring Tone” list. If you click “Browser...” in the list, the file search window pops up. You can select a ring tone (wav, mid file only) from the files in memory. You can listen to the selected ring tone if you click “Listen” in the top right of the “Ring Tone” list. The path of the selected file is displayed under the list.

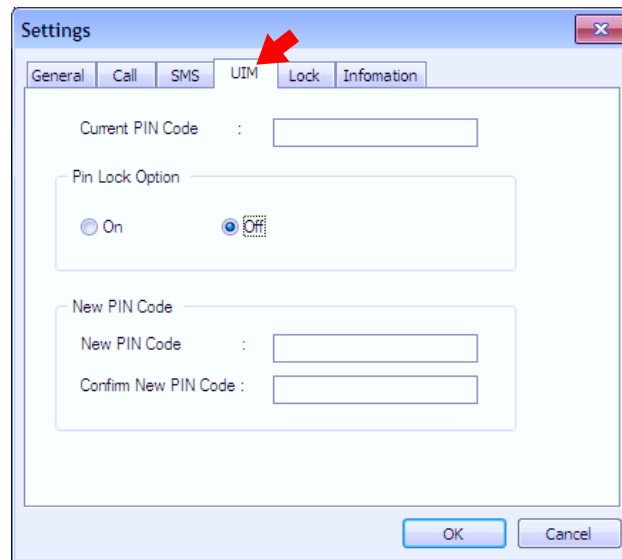
### 3. SMS Settings



- 3.1 You can select the incoming call alert method. If you select “Blinking Tray Icon”, the tray icon flickers. The notice pops up if you select “Auto Pop-up”, or an alert tone sounds if you select “Sound prompt”. Or, you can select all the options.
- 3.2 You can designate the access number to the Voice Mail Center.
- 3.3 If you select “Use” in “Spam Message Settings”, the messages containing the specific number and word are automatically saved in the “Spam message” box. You can add, edit or delete the numbers to be filtered with the “Add”, “Edit” or “Delete” button under the “Number” list. You can also add/edit/delete words to the filtered in the same manner.

## 6. UIM Settings

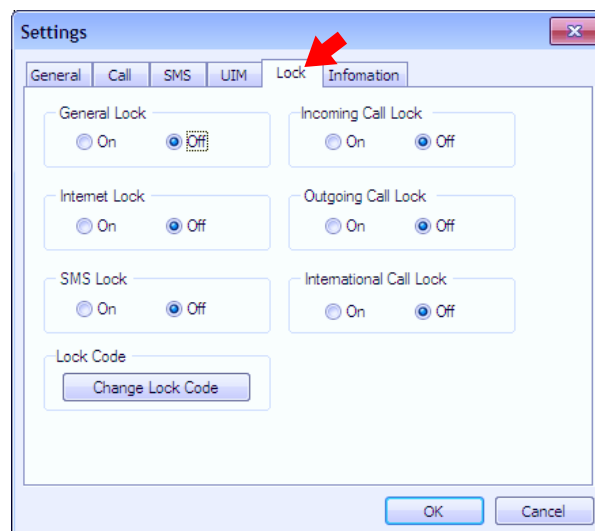
---



- 6.1 In "Current PIN Code", enter the current UIM PIN Lock Code.
- 6.2 If "Pin Lock Option" is "On", you need to enter the UIM PIN Code. If it is "Off", you don't need to enter the PIN Code to access UIM and reset the data.
- 6.3 With "New PIN Code", you can enter a new Pin Code.

## 7. Lock Settings

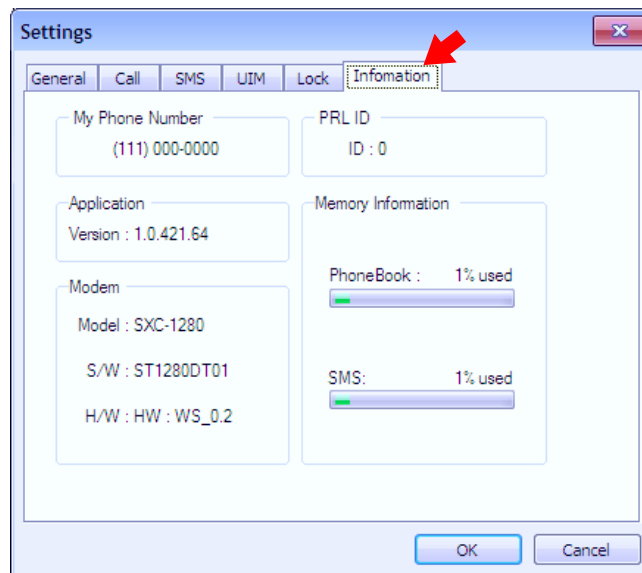
---



- 7.1 If "General Lock" is "On", you need to enter the lock code every time you start the program.
- 7.2 If "Internet Lock" is "On", you need to enter the lock code every time you access Internet.
- 7.3 If "Outgoing Call Lock" is "On", you need to enter the lock code every time you place a call except an emergency call.
- 7.4 If "International Call Lock" is "On", you need to enter the lock code every time you place an international call.

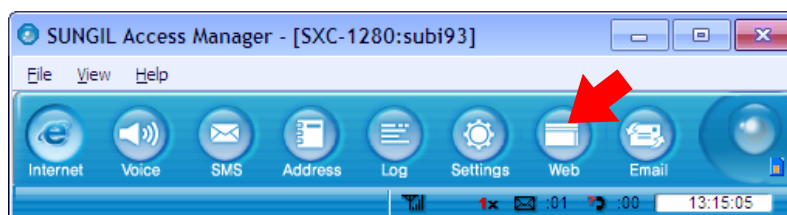
- 7.5 If “Incoming Call Lock” is “On”, you need to enter the lock code every time you receive a call.
- 7.6 If “SMS Lock” is “On”, you need to enter the lock code every time you access the “SMS” menu.
- 7.7 With “New Lock Code”, you can change the lock code. First, you must enter the current lock code in “Current Lock Code”, enter the new lock code in “New Lock Code”, retype the new lock code in “Confirm Lock Code”, and then, click “Save”.

## 8. Information



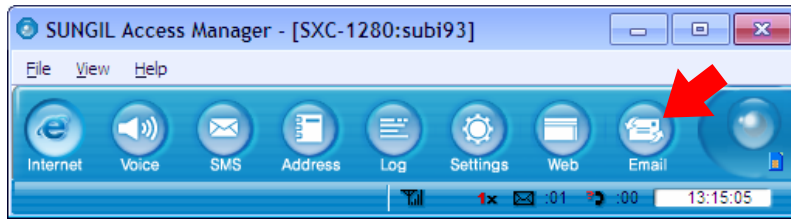
- 8.1 “My Phone Number” shows your phone number.
- 8.2 “Version” shows the SAM version, and the S/W and H/W version of the modem.
- 8.3 “PRL ID” shows the PRL ID of the modem.
- 8.4 “Memory Information” shows the used space in the modem for Address book and SMS in percentage.

## 10. Web



- 1. If you click “Web”, the Internet browser is started, moving to a specific URL.

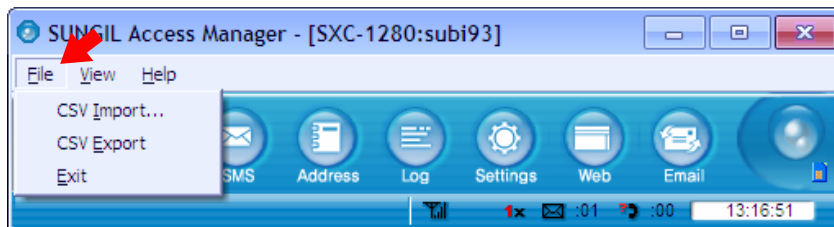
## 11. Email



1. The Email client or the web mail selected by the service provider is started.

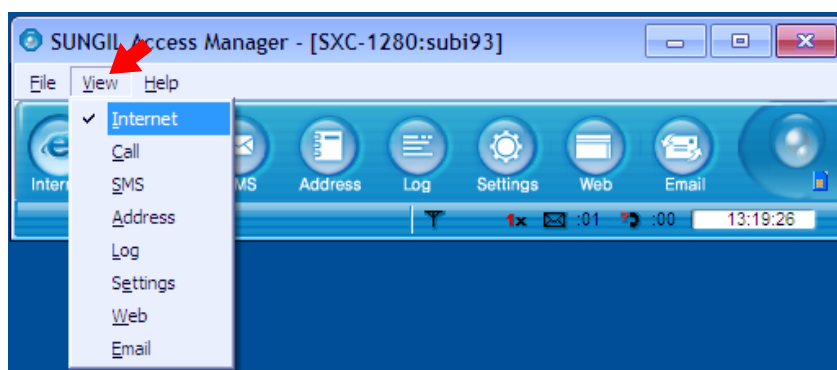
## 12. Others

### 1. File



- 1.1 With the "CSV Import" menu, you can import an address book to SAM. Click "CSV Import", select a csv file in the search window, and click "Open". If the "Field Mapping" window pops up, select the matching items, and click "OK". If import is successful, the success message is displayed.
- 1.2 With "CSV Export", you can export the Address book in SAM to the PC. Select a folder and a file name, and click "Save".
- 1.3 Click "Exit" to exit SAM. If you have selected "Execute SUNGIL Access Manager on Background" in "General" in "Settings", SAM is not exited but reduced into a tray icon.

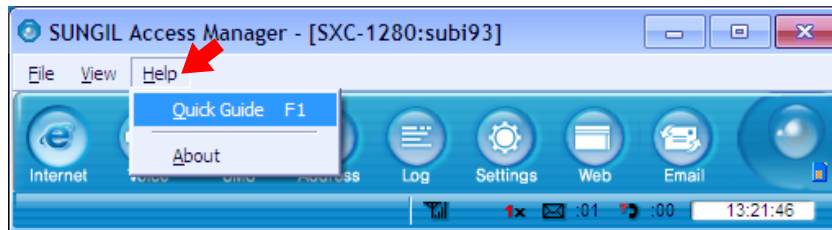
### 2. View



- 2.1 You can select any submenu from the "View" menu on the menu bar.

### 3. Help

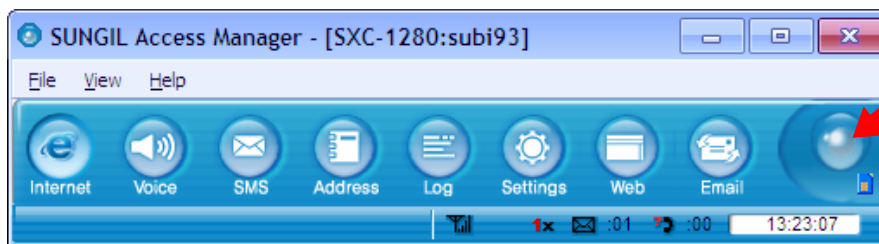
---



- 3.1 You can view description on a function with “Quick Guide”.
- 3.2 If you select “About”, the SAM version and the Home address of Sungil Telecom are displayed.

### 4. Internet access status icon on the top right of the program emulator

---



- 4.1 The Internet Access Icon is activated if the system is accessed to Internet. If you click the icon, the customer site is displayed.

### 5. Tray Icon

---



- 5.1 The tray icon indicates if the modem is plugged in. Right-click the tray icon and select “Restore” to enlarge the SAM window. Select “Connect” to access Internet, or ‘Exit’ to exit the SAM program.

### 6. Mass Storage

---



- 6.1 To use the mass storage function of the modem, press the LED button. Then, the green LED flickers, and the modem operates as a mass storage. If you are using the voice call or internet function of SAM, you should stop the operation to use the mass storage. (You will lose the current data.)
- 6.2 To return to the modem, press the LED button again.

**RF EXPOSURE INFORMATION**  
**THIS CDMA DONGLE MEETS THE GOVERNMENT 'S REQUIREMENTS**  
**FOR EXPOSURE TO RADIO WAVES.**

Your CDMA DONGLE is a radio transmitter and receiver. It is designed and manufactured not to exceed the emission limits for exposure to radio frequency (RF) energy set by the Federal Communications Commission of the U.S.Government. These limits are part of comprehensive guidelines and establish permitted levels of RF energy for the general population. The guidelines are based on standards that were developed by independent scientific organizations through periodic and thorough evaluate on of scientific studies. The standards include a substantial safety margin designed to assure the safety of all persons, regardless of age and health.

The exposure standard for wireless devices employs a unit of measurement known as the Specific Absorption Rate, or SAR. The SAR limit set by the FCC is 1.6 W/kg.\*Tests for SAR are conducted with the device transmitting at its highest certified power level in all tested frequency bands. Although the SAR is determined at the highest certified power level, the actual SAR level of the device while operating can be well below the maximum value. This is because the phone is designed to operate at multiple power levels so as to use only the power required to reach the network. In general, the closer you are to a wireless base station antenna, the lower the power output. Before a wireless device is available for sale to the public, it must be tested and certified to the FCC that it does not exceed the limit established by the government adopted requirement for safe exposure.

The highest SAR value for this CDMA Dongle is **1.07 W/kg (CDMA CELLULAR)**. The FCC has granted an Equipment Authorization for this CDMA Dongle with all reported SAR levels evaluated as in compliance with the FCC RF exposure guidelines. SAR information on this model phone is on file with the FCC and can be found under the Display Grant section of [http://www.fcc.gov /oet / fcc id](http://www.fcc.gov/oet/fccid) after searching on **FCC ID : R2NSXC-1280**.

Additional information on Specific Absorption Rates (SAR)can be found on the Cellular Telecommunications &Internet Association (CTIA) web-site at <http://phonefacts.net>.\*In the United States and Canada, the SAR limit for mobile phones used by the public is 1.6watts/kg (W/kg)averaged over one gram of tissue. The standard incorporates a substantial margin of safety to give additional protection for the public and to account for any agitations in measurements.

In August 1996 the Federal Communications Commission (FCC) of the United States with its action in Report and Order FCC 96-326 adopted an updated safety standard for human exposure to radio frequency (RF) electromagnetic energy emitted by FCC regulated transmitters. Those guidelines are consistent with the safety standard previously set by both U.S. and international standards bodies. The design of this phone complies with the FCC guidelines and these international standards.

For more information about RF exposure, please visit the FCC website at [www.fcc.gov](http://www.fcc.gov)

***WARNING! Read this information before use***

**Caution**

Modifications not expressly approved by the party responsible for compliance could void the user's authority to operate the equipment.

**FCC Compliance Information**

This device complies with Part 15 of FCC Rules. Operation is subject to the following two conditions: (1) This device may not cause harmful interference, and (2) This device must accept any interference received. Including interference that may cause undesired operation.

**Information to User**

This equipment has been tested and found to comply with the limits for a Class B digital device, pursuant to part 15 of the FCC Rules. These limits are designed to provide reasonable protection against harmful interference in a residential installation. This equipment generates, uses and can radiate radio frequency energy and, if not installed and used in accordance with the instructions, may cause harmful interference to radio communications. However, there is no guarantee that interference will not occur in a particular installation. If this equipment does cause harmful interference to radio or television reception, which can be determined by turning the equipment off and on, the user is encouraged to try to correct the interference by one or more of the following measures:

- Reorient or relocate the receiving antenna.- Increase the separation between the equipment and receiver.
- Connect the equipment into an outlet on a circuit different from that to which the receiver is connected.
- Consult the dealer or an experienced radio/ tv technician for help.