

EPSON®
EXCEED YOUR VISION

*Photo Projects
Made Easy*



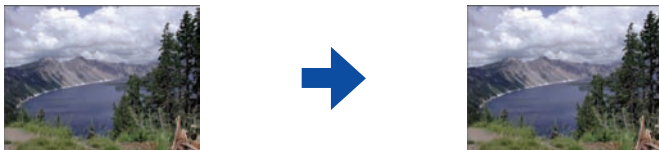
EPSON® ALL-IN-ONE **STYLUS® CX7800**

Welcome

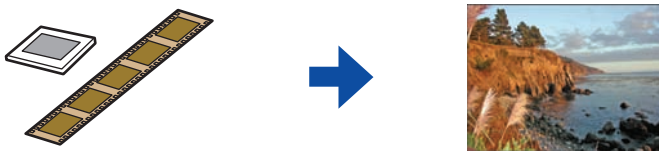
Your Epson Stylus® CX7800 lets you copy, print, and restore color in your printed photos, slides, or negatives without using a computer.

Follow the steps in “Getting Started” on page 3, then see these sections:

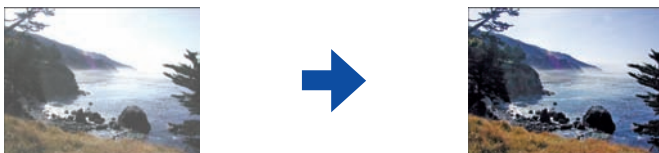
- “Copying 4 × 6-inch Photos” on page 7



- “Making Photos From Slides and Negatives” on page 8



- “Restoring Faded Color Photos, Slides, and Negatives” on page 9



- “Printing Photos From a Memory Card” on page 10

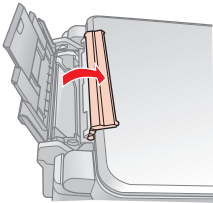


This booklet guides you through copying, restoring, and printing your photos on 4 × 6-inch photo paper. To print on other paper types and sizes, or for additional instructions, see the *Basics Guide* or on-screen *User’s Guide*.

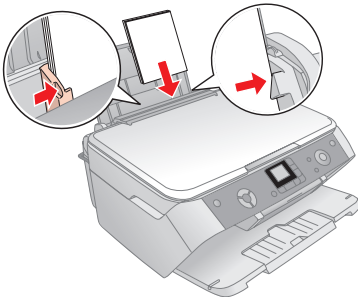
Getting Started

Loading Paper

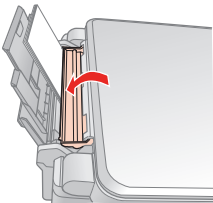
Insert 4 × 6-inch Epson Premium Glossy Photo Paper short edge first and shiny side up.



Flip the feeder guard forward.



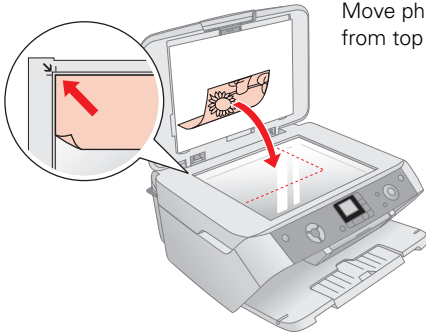
Insert paper against the right edge of the sheet feeder. Slide the left edge guide over.



Flip the feeder guard back.

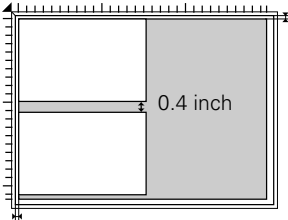
Placing Photos

- 1 Open the document cover and place a 4 × 6-inch photo face-down on the glass, in the upper left corner.



Move photo 0.2 inch from top and side edges.

Tip: You can also copy two 4 × 6-inch photos at the same time. Place photos vertically about 0.4 inch apart, even when copying landscape oriented photos.



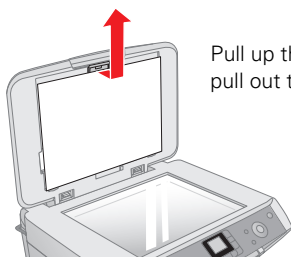
- 2 Close the document cover.

You're ready to start a photo project. See one of these sections for instructions:

- “Copying 4 × 6-inch Photos” on page 7
- “Restoring Faded Color Photos, Slides, and Negatives” on page 9

Placing Film and Slides

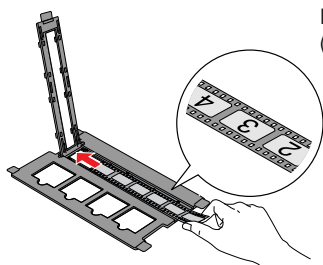
First, remove the document mat. Then follow the steps below:



Pull up the fastener, then pull out the document mat.

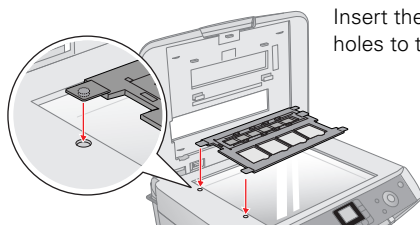
Placing Film

- 1 Open the film strip cover and slide the strip of film into the film holder.



Insert the film under the tabs, with the shiny (base) side up. Close the film strip cover.

- 2 Place the film holder on the glass as shown.



Insert the tabs in the two holes to the left of the glass.

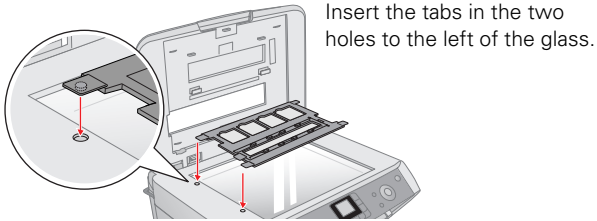
- 3 Close the document cover.

You're ready to start a photo project. See one of these sections for instructions:

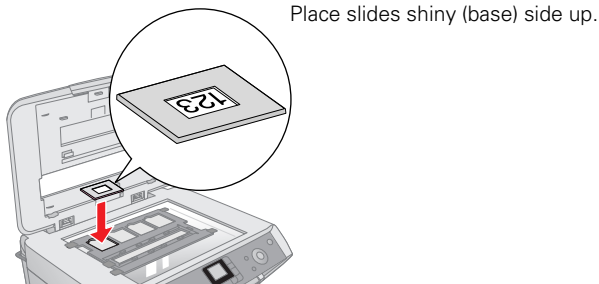
- “Making Photos From Slides and Negatives” on page 8
- “Restoring Faded Color Photos, Slides, and Negatives” on page 9

Placing Slides

- 1 Place the film holder on the glass as shown.



- 2 Place your slides in the film holder.

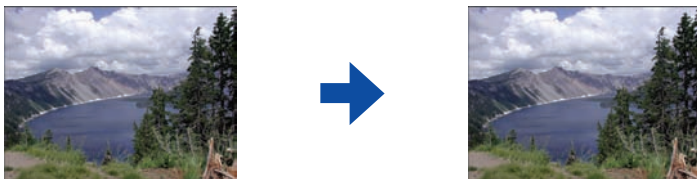


- 3 Close the document cover.


You're ready to start a photo project. See these sections for instructions:

- "Making Photos From Slides and Negatives" on page 8
- "Restoring Faded Color Photos, Slides, and Negatives" on page 9

Copying 4 × 6-inch Photos





Before you begin, load paper and place your photo on the glass as described in “Getting Started” on page 3.

- 1 Press the  Film/Photo mode button.
- 2 If necessary, press the ◀ or ▶ Photo/Options button to select Copy Photograph.



Tip:

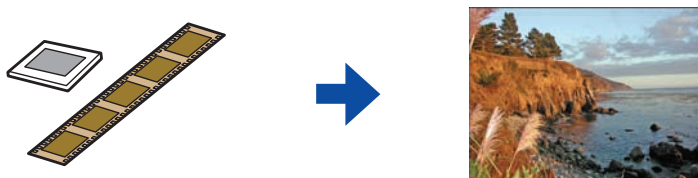
You can also restore faded color photos when copying. See “Restoring Faded Color Photos, Slides, and Negatives” on page 9 for details.

- 3 Press the  Start button to preview your photos on the LCD screen.
- 4 Press the ◀ or ▶ Photo/Options button to view your photos and the ▲ or ▼ Copies button to select the number of copies to print.
- 5 If necessary, press the paper type button to select Photo Paper and the paper size button to select 4”×6.”
- 6 Press the  Start button to print your photo.




Note:

To cancel printing, press the  Stop/Clear Settings button.

Making Photos From Slides and Negatives





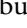



Before you begin, load paper, remove the document mat, and place your negatives or slides in the film holder as described in “Getting Started” on page 3.

- 1 Press the  Film/Photo mode button.
- 2 Press the  or  Photo/Options button to select one of the following settings:
 - Negative Film
 - Positive Film
 - Slides
 - B&W Negative Film

Tip:

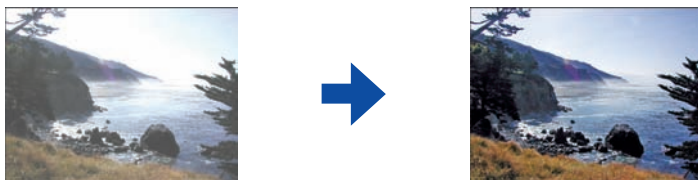
You can also restore faded color negatives and slides when copying. See “Restoring Faded Color Photos, Slides, and Negatives” on page 9 for details.

- 3 Press the  Start button to preview your photos on the LCD screen.
- 4 Press the  or  Photo/Options button to view your photos and the  or  Copies button to select the number of copies to print.
- 5 If necessary, press the paper type button to select **Photo Paper** and the paper size button to select **4"×6."**
- 6 Press the  Start button to print your photos.

Note:




To cancel printing, press the  Stop/Clear Settings button.

Restoring Faded Color Photos, Slides, and Negatives



If you have faded color photos, negatives, or slides, your Epson Stylus CX7800 can bring them back to life using the color restoration feature.

Before you begin, load paper and place your photo, negatives, or slides on the glass as described in “Getting Started” on page 3.

- 1 Press the  Film/Photo mode button.
- 2 Press the ◀ or ▶ Photo/Options button to select one of these settings:
 - Copy Photograph Restoration ON
 - Negative Film Restoration ON
 - Positive Film Restoration ON
 - Slides Restoration ON
 - B&W Negative Film Restoration ON
- 3 Press the  Start button preview your photos on the LCD screen.
- 4 Press the ◀ or ▶ Photo/Options button to view your photos and the ▲ or ▼ Copies button to select the number of copies to print.
- 5 If necessary, press the paper type button to select **Photo Paper** and the paper size button to select **4"×6"**.
- 6 Press the  Start button to print your photos.

Note:

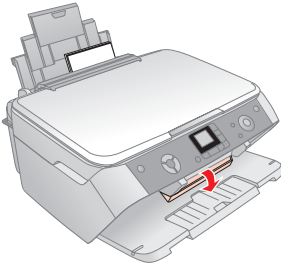
To cancel printing, press the  Stop/Clear Settings button.

Printing Photos From a Memory Card

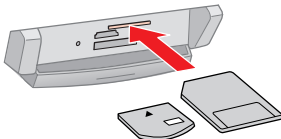


Before you begin, load paper as described in “Getting Started” on page 3.

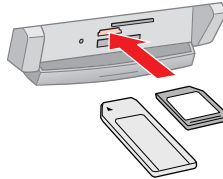
- 1 Open the memory card slot cover.



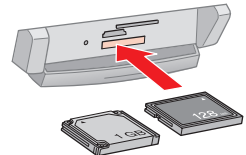
- 2 Insert your memory card in the correct slot.



Smart Media
xD-Picture Card*



Memory Stick*
SD Card*
MultiMedia Card



CompactFlash
Microdrive

*For a complete list of supported memory cards, see the table on page 11.

The memory card light turns green when the card is inserted. You see a preview of the first image on the memory card.

You can use the following types of cards with your Epson Stylus CX7800:

| Slot | Type of card |
|-------------|---|
| Top slot | SmartMedia™ xD-Picture Card™ xD-Picture Card Type M |
| Middle slot | Memory Stick™ Memory Stick PRO™ MagicGate™ Memory Stick MagicGate Memory Stick Duo* Memory Stick Duo™* Memory Stick PRO Duo™* SD™ Card MultiMediaCard MiniSD™ Card* |
| Bottom slot | CompactFlash™ Microdrive™ |

*Adapter required

- 3 Close the memory card slot cover.
- 4 Press the ◀ or ▶ **Photo/Options** button to view your photos and the ▲ or ▼ **Copies** button to select the number of copies to print.
- 5 Press the paper type button to select **Photo Paper** and the paper size button to select **4"×6"**.
- 6 Press the ◊ **Start** button to start printing your photos.

Note:

To cancel printing, press the ⏹ **Stop/Clear Settings** button.

Epson and Epson Stylus are registered trademarks and Exceed Your Vision is a trademark of Seiko Epson Corporation.

General Notice: Other product names used herein are for identification purposes only and may be trademarks of their respective owners. Epson disclaims any and all rights in those marks.

© 2005 Epson America, Inc. 7/05

EPSON[®]
EXCEED YOUR VISION



410327100

CPD-20265
Printed in XXXXXX XX.XX-XX XXX