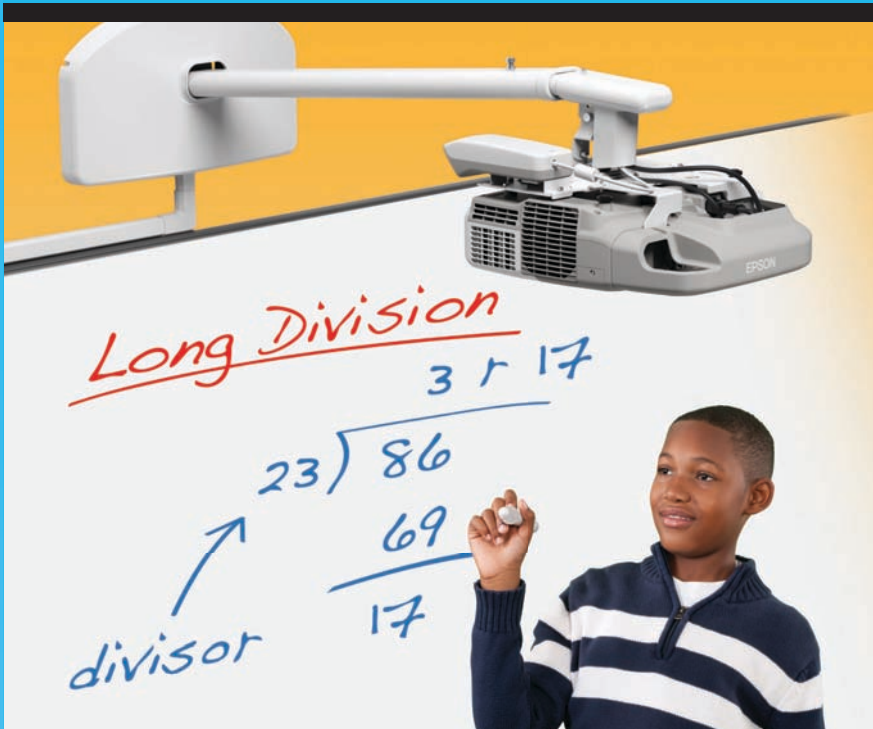


# BrightLink Welcome Kit



# Welcome to BrightLink!

This kit has everything you need to get started with BrightLink. Here's how:



- 1** First, follow the steps on the *Start Here* card to get up and running.

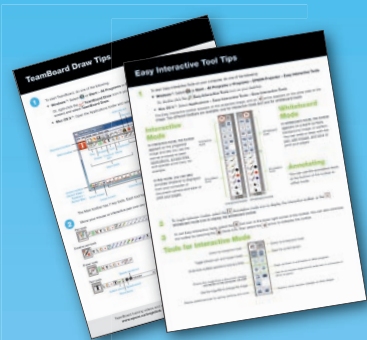


- 2** Install the manuals from the BrightLink 425Wi/430i/435Wi CD in this kit.



BrightLink Training Resources

- 3** Then click the **BrightLink Training Resources** link on your desktop and sign up for free webinars and training.



- 4** Play with the software. Tip sheets for TeamBoard Draw and Easy Interactive Tools are right in this kit.



- 5** Pop in the DVD to view BrightLink video tutorials.

For help, software, manuals, FAQs, and more, go to [epson.com/brightlinkdownloads](http://epson.com/brightlinkdownloads) (U.S.) or [epson.ca/brightlinkdownloads](http://epson.ca/brightlinkdownloads) (Canada).

## Getting up and running with BrightLink is easy!

Learning BrightLink basics takes less than 30 minutes. The resources in this kit will help you take your first steps toward a more interactive classroom.

The BrightLink online support center provides lots of additional resources. Click the **BrightLink Training Resources** link on your desktop or go to **epson.com/brightlink** (U.S.) or **epson.ca/brightlink** (Canada). Training options include:

- **Free webinars** will help you use BrightLink's interactivity to engage students and enhance your instruction.
- **Short tutorials** can help you master a new tool or application of your BrightLink in mere minutes. Watch, listen, and follow along.
- **Onsite professional development** provides more specific and personalized training for your school.

With the help of these tools and resources, you can start using your BrightLink in powerful ways from the very first day you turn it on!

# EPSON iProjection™ for iPad®, iPhone®, and iPod® touch

The EPSON iProjection app lets you show documents and photos wirelessly from Apple® devices on your BrightLink! If the projector is on a network that includes a wireless access point (or you have the optional wireless module), the app will work for you.

You can download EPSON iProjection for free from the App Store. For more information, visit: [www.epson.com/projectorapp](http://www.epson.com/projectorapp) (U.S.) or [www.epson.ca/projectorapp](http://www.epson.ca/projectorapp) (Canada).

## Still need help?

The PrivateLine® card in this kit is for you! All you have to do is call (800) 637-7661 and enter the PIN on the PrivateLine card. This service is available for the duration of your warranty period.

You may also speak with a projector support specialist by dialing (562) 276-4394 (U.S.) or (905) 709-3839 (Canada).

Support hours are 6 AM to 8 PM, Pacific Time, Monday through Friday and 7 AM to 4 PM, Pacific Time, Saturday.

Days and hours of support are subject to change without notice. Toll or long distance charges may apply.



Epson America, Inc.  
3840 Kilroy Airport Way  
Long Beach, CA 90806

Epson Canada, Ltd.  
185 Renfrew Drive  
Markham, Ontario L3R 6G3

[www.epson.com](http://www.epson.com)  
[www.epson.ca](http://www.epson.ca)

EPSON and BrightLink are registered trademarks and EPSON Exceed Your Vision is a registered logomark of Seiko Epson Corporation. PrivateLine is a registered trademark of Epson America, Inc.

General Notice: Other product names used herein are for identification purposes only and may be trademarks of their respective owners. Epson disclaims any and all rights in those marks.

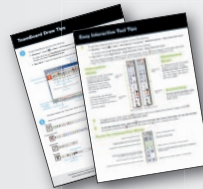


## Need More Help?

BrightLink software, manuals, FAQs, and more are available at [epson.com/brightlinkdownloads](http://epson.com/brightlinkdownloads) (U.S.) or [epson.ca/brightlinkdownloads](http://epson.ca/brightlinkdownloads) (Canada).



DVD containing BrightLink training videos in this Welcome Kit.



Tips sheets for Easy Interactive Tools and TeamBoard Draw in this Welcome Kit.



BrightLink *User's Guide*, available on the BrightLink CD or at the BrightLink websites listed above.



PrivateLine® technical support card, with your individual PIN.

Call (800) 637-7661. You can also call (562) 276-4394 (U.S.) or (905) 709-3839 (Canada).

## Start Here

Follow the steps on this card to get started with your BrightLink:

- 1 Make sure the software is installed
- 2 Connect your computer and turn on the projector
  - Using the remote control
- 3 Launch Easy Interactive Driver
  - Using the pens
- 4 Calibrate your system
- 5 Explore additional software options

### Ready to Learn More?

- Sign up for complimentary webinars
- Watch helpful how-to videos
- Find out about cool, free interactive sites




Click the **BrightLink Training Resources** link on your desktop or go to [www.epson.com/eduresources](http://www.epson.com/eduresources)

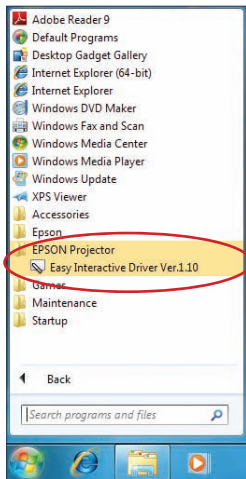
# 1 Make Sure the Software Is Installed

You need Easy Interactive Driver (EID) to make the pen work as a mouse with your projected computer image.

Here's how to find out if Easy Interactive Driver is already installed on your computer:

## If you are using Windows®:

Select  or **Start > All Programs or Programs > EPSON Projector > Easy Interactive Driver**. If you see Easy Interactive Driver, the software is installed.



## If you are using Mac OS® X:

Look for the **Easy Interactive Driver** folder in the **Applications** folder on your hard drive. If you see the Easy Interactive Driver folder, the software is installed.



If Easy Interactive Driver is not installed, follow the steps in the next column to install it.

## If you need to install Easy Interactive Driver

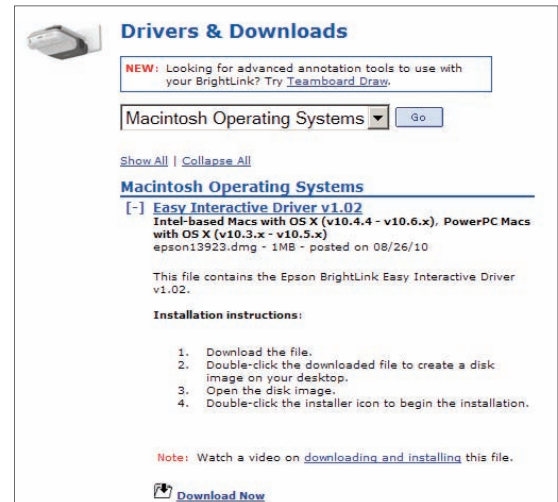
Do one of the following:

- Use the CD that came with the projector, labeled “EPSON Projector Software for Easy Interactive Function”



- Download the most up-to-date version from:  
**epson.com/brightlinkdownloads** (U.S.)  
**epson.ca/brightlinkdownloads** (Canada)

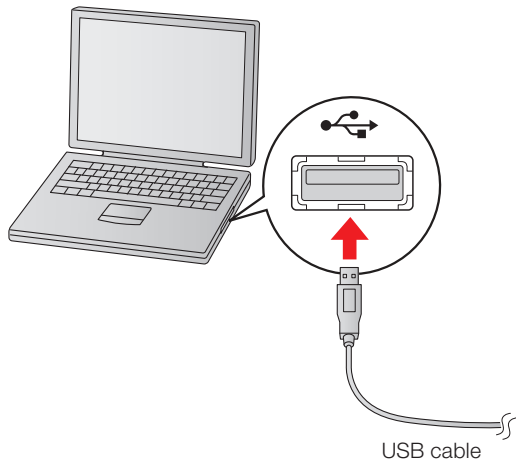
You will need internet access.





For detailed installation instructions, see the *BrightLink User's Guide* on your computer or on the CD in the Welcome Kit, or watch the video on your DVD.

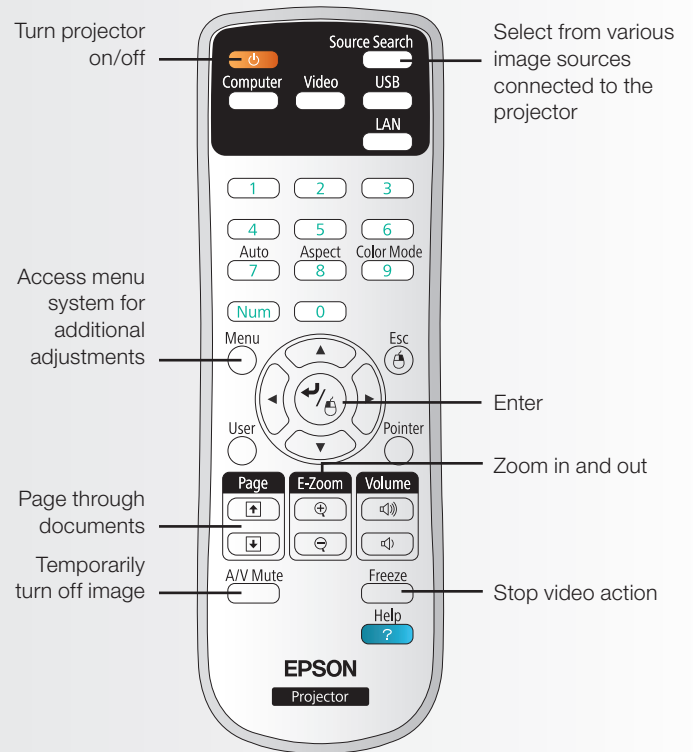
## 2 Connect Your Computer and Turn on the Projector

- 1 Connect the USB cable from the interactive module to any available USB port on your computer.



- 2 Connect another cable (USB, HDMI, or VGA cable) from the projector to your computer.
- 3 Turn on the projector by pressing the red  power button on the remote control.
- 4 Display an image from your computer. If the image doesn't appear, try one of the following:
  - On some PC laptops, you may need to hold down the **Fn** key on the keyboard and press **F7** or the function key that lets you display on an external monitor. It may have an icon such as , or it may be labelled **CRT/LCD**.
  - On a Mac, you may need to open **System Preferences** and select **Displays**. Select the **VGA Display** or **Color LCD** option if necessary, then click the **Arrange** or **Arrangement** tab, and select the **Mirror Displays** check box.
  - Try pressing the **Source Search** button on the remote control.

## Using the Remote Control




For more information about using the remote control and cool time-saving buttons:

- See the *BrightLink User's Guide* on your computer or on the CD in this Welcome Kit.
- Go to the training section and watch a video or two at [epson.com/brightlink](http://epson.com/brightlink) (U.S.), [epson.ca/brightlink](http://epson.ca/brightlink) (Canada), or [atomiclearning.com](http://atomiclearning.com).

**Note:** For BrightLink Solo™, the remote control for your projector will be different.




# 3 Launch Easy Interactive Driver


1 Look for the  pen icon in the lower right corner of your screen (Windows) or in the Dock (Mac OS X).

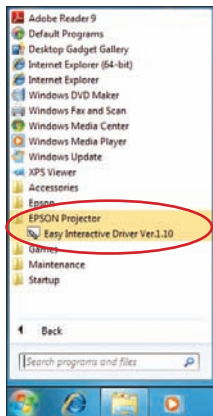
- If you don't see the icon in Windows, you may need to click the arrow(s) to show hidden icons.



- If a red X appears on the icon , the computer and interactive module may not be connected correctly. Make sure the projector is powered on and the USB cable from the interactive module is securely connected to your computer.

2 If you don't see the icon, make sure Easy Interactive Driver is installed on your computer (see above for instructions if necessary), then do one of the following to launch the driver:

- Windows: select  or **Start > All Programs** or **Programs > EPSON Projector > Easy Interactive Driver**.



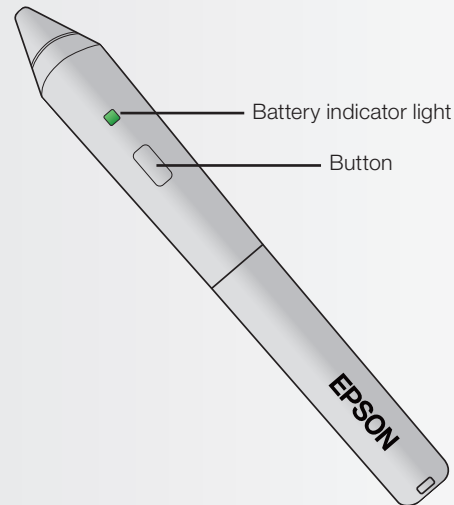
- Mac OS X: open the **Applications** folder, then open the **Easy Interactive Driver** folder and select the **Easy Interactive Driver** icon.



## Using the Pens

Make sure the batteries are installed in the interactive pens.

- Press the button on the pen. If the light turns green, the batteries are installed and charged.



- Hold the pen at an angle, rather than perpendicular to the board.
- To left-click, tap on the board.
- To double-click, tap twice.
- To right-click, press and hold the button on the pen, then tap the board.
- To click and drag, tap and drag with the pen.


If you use the pens for several hours every day, you may have to recharge the batteries once a week. If you use them less often, you may only have to recharge once a month.

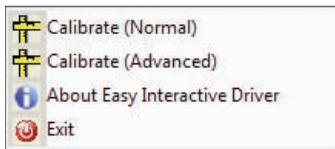
**Tip:** You can only write with one pen at a time, but you can use both pens and trade off. To learn more about EID and the BrightLink pen, watch the videos we made just for you on the included DVD. Or, sign up for a free webinar at [www.epson.com/eduresources](http://www.epson.com/eduresources).


# 4 Calibrate Your System

Calibration coordinates the positioning of the pen with the location of your cursor. You can use either pen, and you only have to calibrate once.\*


1 Do one of the following:

- Windows: click the  pen icon in the system tray on your taskbar (lower right corner of your screen), then select **Calibrate (Normal)**.

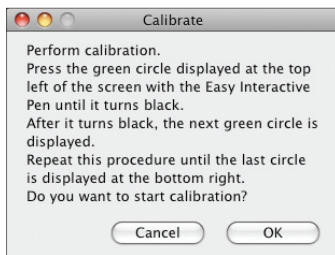


- Mac OS X: click the  pen icon in the Dock, select **Calibration** from the menu bar at the top of the screen, then select **Calibrate (Normal)**.



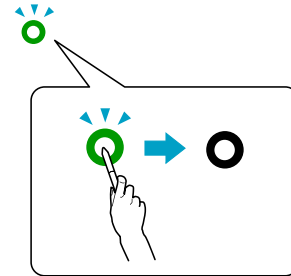
**Note:** If a red X  appears on the icon, you won't be able to calibrate. Make sure the projector is powered on and the USB cable from the interactive module is securely connected to your computer.

2 After you read the following message, click **OK**.



**Note:** Advanced calibration is recommended only if you are projecting highly detailed images.

3 Wait a few moments for the flashing green circle to appear. Use the interactive pen to touch each flashing green circle as it appears. Continue until all the circles stop flashing and turn black.



- Touch the center of each circle, and make sure you are not casting a shadow on the pen.
- Make sure you are not blocking the signal between the pen and the interactive module.
- Do not press the button on the pen while calibrating.
- If you make a mistake, or if too many circles appear at the same time, press **Esc** on your computer keyboard and restart calibration.

**\*Tip:** You don't have to recalibrate unless you do one of the following:

- Connect a different computer that has a different screen size
- Change the resolution of your monitor
- Notice that the pen position is no longer the same as your cursor

**Congratulations! When you finish calibration, you're ready to explore your software options, as described on the next page.**

# 5 Explore Additional Software Options

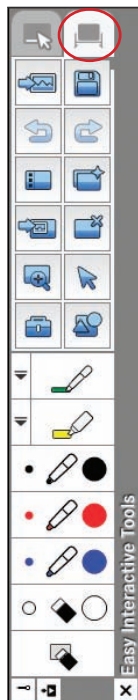
Easy Interactive Driver allows you to use the BrightLink pen as a mouse. For annotating, you need additional software. If you already have annotation software, you can use it with BrightLink.

You can also use one of the following:

- Easy Interactive Tools (EIT), free from Epson, is a basic annotation program available for download from the Epson website. Click the link on your desktop or go to [epson.com/brightlinkdownloads](http://epson.com/brightlinkdownloads) (U.S.) or [epson.ca/brightlinkdownloads](http://epson.ca/brightlinkdownloads) (Canada).



Interactive mode

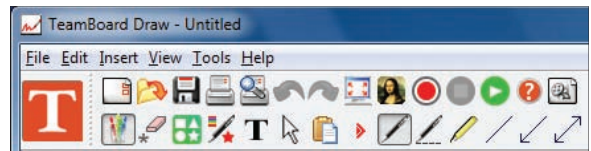


Whiteboard mode

For more information, see the Easy Interactive Tools Tips sheet in this Welcome Kit or the BrightLink *User's Guide*.

- TeamBoard Draw, a more intermediate level annotation program, is included with your projector. You can install it from the CD that came with your BrightLink, or download it from the Epson website at [epson.com/brightlinkdownloads](http://epson.com/brightlinkdownloads) (U.S.) or [epson.ca/brightlinkdownloads](http://epson.ca/brightlinkdownloads) (Canada).

You will need Internet access and your product serial number to download TeamBoard Draw. Press the **Menu** button on the remote control and select the Info menu to see your serial number. (For BrightLink Solo, the serial number is on the arm of the interactive module.)



For more information, see the TeamBoard Draw Tips sheet in this Welcome Kit or the TeamBoard videos on your DVD.

EPSON and BrightLink are registered trademarks and EPSON Exceed Your Vision is a registered logomark of Seiko Epson Corporation.

BrightLink Solo is a trademark and PrivateLine is a registered trademark of Epson America, Inc.




General Notice: Other product names used herein are for identification purposes only and may be trademarks of their respective owners. Epson disclaims any and all rights in those marks.

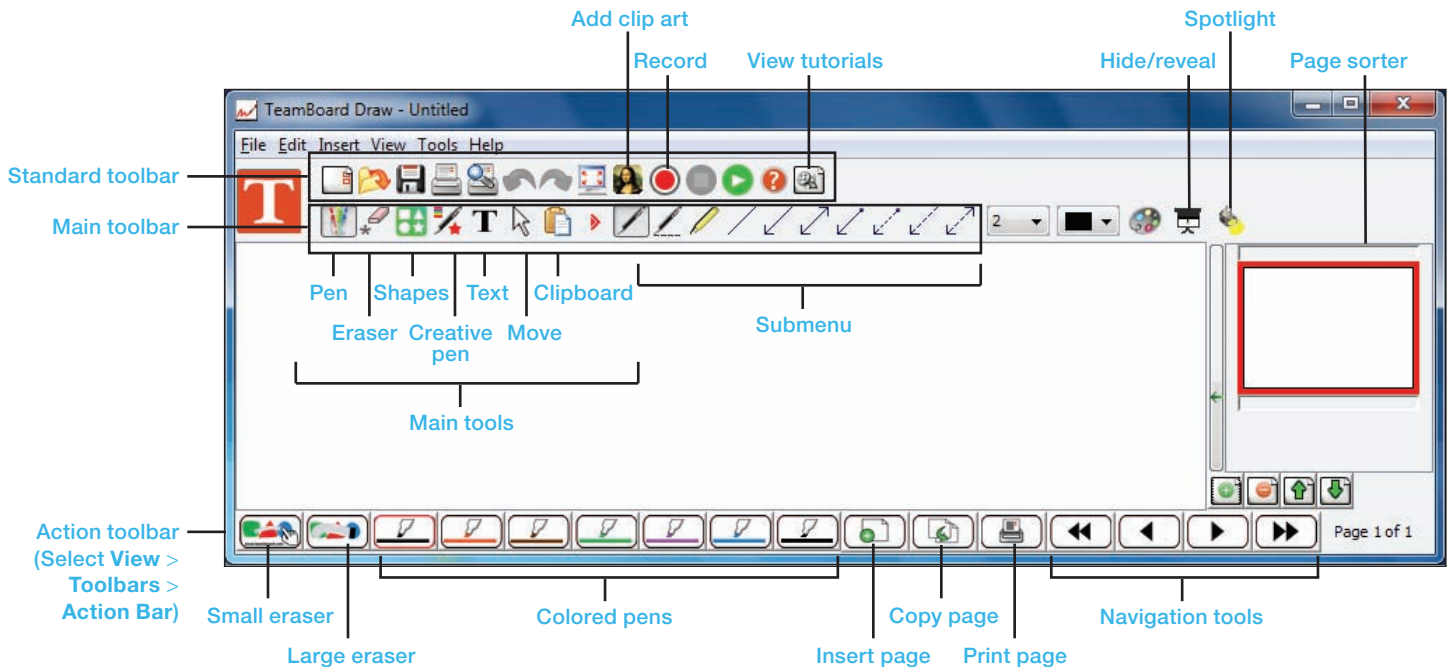
This information is subject to change without notice.

# TeamBoard Draw Tips

1

To start TeamBoard, do one of the following:

- **Windows®:** Select  or **Start > All Programs** or **Programs > Teamboard > Draw**.  
Or, right-click the  **TeamBoard Draw** icon in your system tray (lower right corner of your screen) and select **TeamBoard Draw**.
- **Mac OS X®:** Open the Applications folder and select  **Draw**.



The Main toolbar has 7 key tools. Each tool has its own submenu on the right side (after the  red arrow).

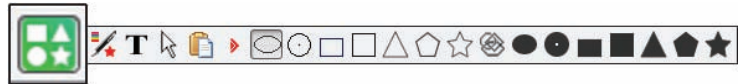
2

Move your mouse or interactive pen over any of the tool icons to see a definition.

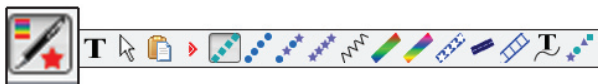
Pen tools



Shape tools



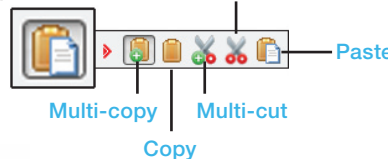
Creative pen tools



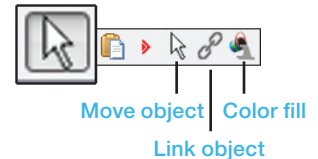
Eraser tools



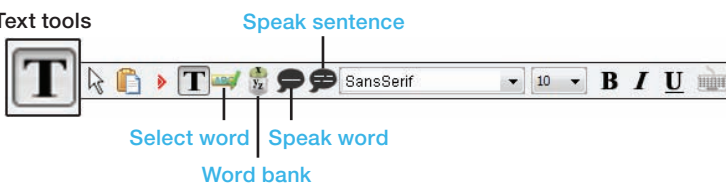
Clipboard tools



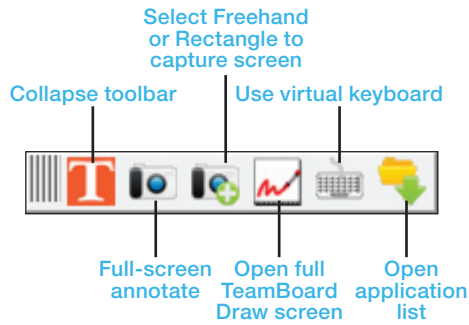
Move tools



Text tools



# Using the Annotation Toolbar



**1** To access the floating annotation toolbar or dashboard, do one of the following:

- **Windows:** Select or **Start > All Programs** or **Programs > Teamboard > Annotation**.

Or, right-click the **TeamBoard Draw** icon in your system tray (lower-right corner of your screen) and select **Annotation**.

- **Mac OS X:** Select the **TeamboardAnnotate** icon on your screen.

**2** To take a full-screen snapshot for annotation, select the camera icon. The following toolbar appears:



You can use all of the TeamBoard tools to draw or annotate on a web page or anything else on your computer.

**3** To save your annotations and return to your desktop, select the icon on the right end of the toolbar.

**4** To save annotated images in TeamBoard, open the **File** menu and select one of the following:

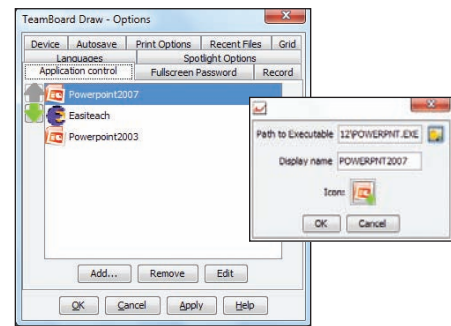
- **Save as** (to save in .tmb file format)
- **Export** (to save in .jpg, .ppt, .bmp, .pdf, .html, .tif, .png, or .iwb file formats)

After you export a .ppt file, you can open it in PowerPoint®. First you need to associate PowerPoint with TeamBoard by following the steps in the next column.

# Presenting and Annotating in PowerPoint

First, you need to associate PowerPoint with TeamBoard.

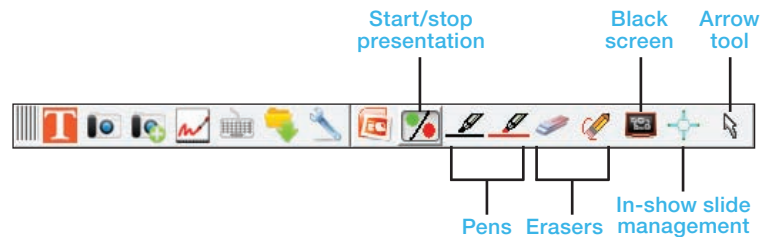
- 1** Open the **Tools** menu and select **Options**.
- 2** Select the **Application Control** tab, then select the **Add** button.
- 3** Locate and select **POWERPNT.EXE** in your Program Files\Microsoft Office folder.
- 4** Select **OK**, then select **OK** again to close the Options window.



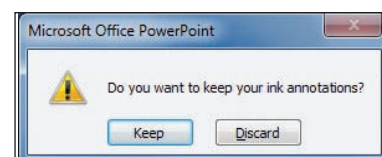
Once you have associated PowerPoint, you can open it from the TeamBoard annotation toolbar:



Additional tools appear on the toolbar as shown below:






You can open your PowerPoint file and annotate it using the TeamBoard tools. When you are finished, select **Keep** to save your “ink annotations” with the PowerPoint file. This is great for sharing meeting notes.



# Easy Interactive Tool Tips

**1** To start Easy Interactive Tools on your computer, do one of the following:

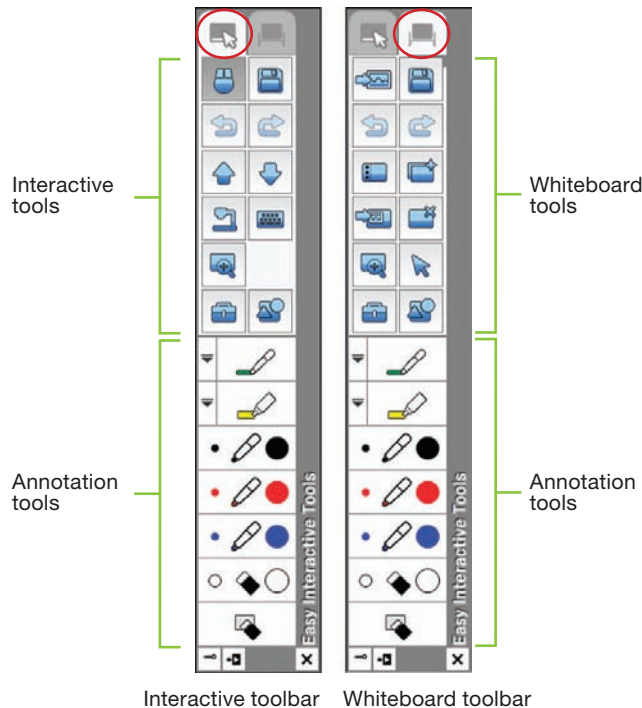
- **Windows**®: Select  or **Start > All Programs** or **Programs > EPSON Projector > Easy Interactive Tools**.  
Or, double-click the  **Easy Interactive Tools** icon on your desktop.
- **Mac OS X**®: Select **Applications > Easy Interactive Tools > Easy Interactive Tools**.

The Easy Interactive toolbar appears on the projected image, and an  arrow appears on the other side of the image. Two different toolbars are available, one for interactive mode and one for whiteboard mode:

## Interactive Mode

In interactive mode, the toolbar appears on the projected image and lets you use the pen as a mouse to open applications, access links, and operate scroll bars, for example.

In this mode, you can also annotate whatever is displayed from your computer or document camera and save or print your pages.








## Whiteboard Mode

In whiteboard mode, the toolbar appears on a blank surface, background image, or pattern. You can write or draw with the pen, add images, and save or print your pages.

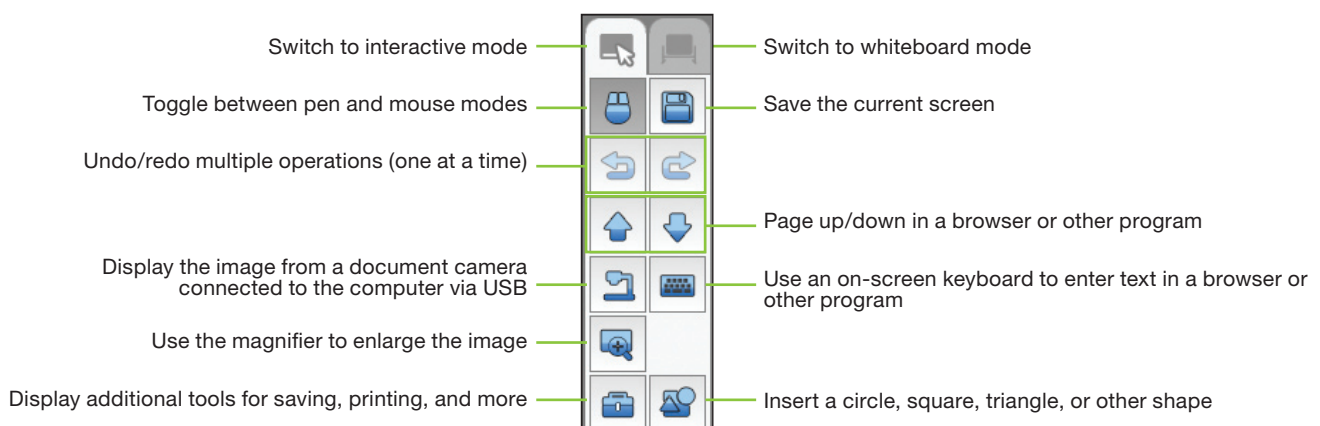
## Annotating

You can use the annotation tools at the bottom of the toolbar in either mode.

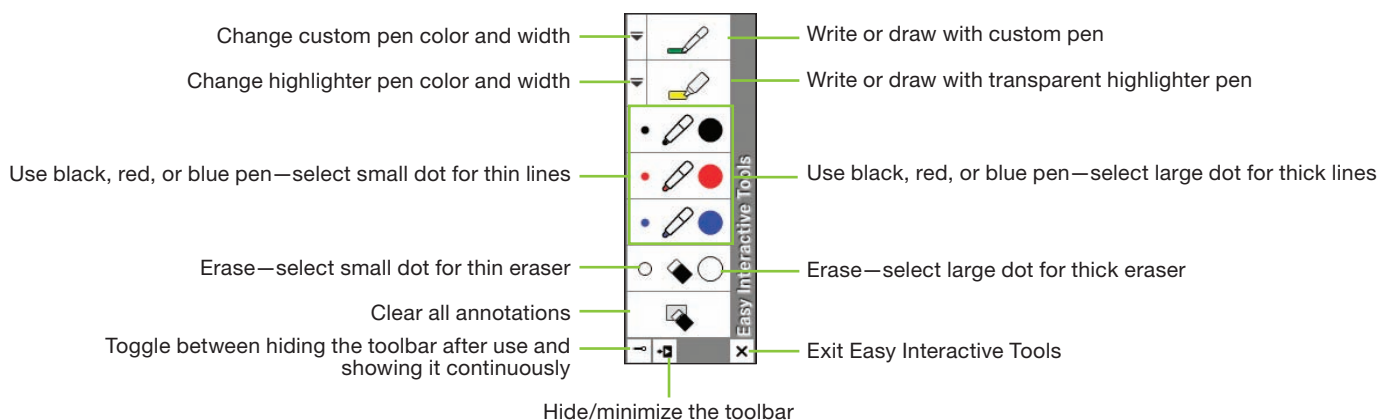
**2** To toggle between modes, select the  Annotation mode icon to display the interactive toolbar, or the  Whiteboard mode icon to display the whiteboard toolbar.

**3** To exit Easy Interactive Tools, select the  Exit icon in the lower right corner of the toolbar. You can also minimize the toolbar by selecting the  Close icon, then select the  arrow to redisplay the toolbar.

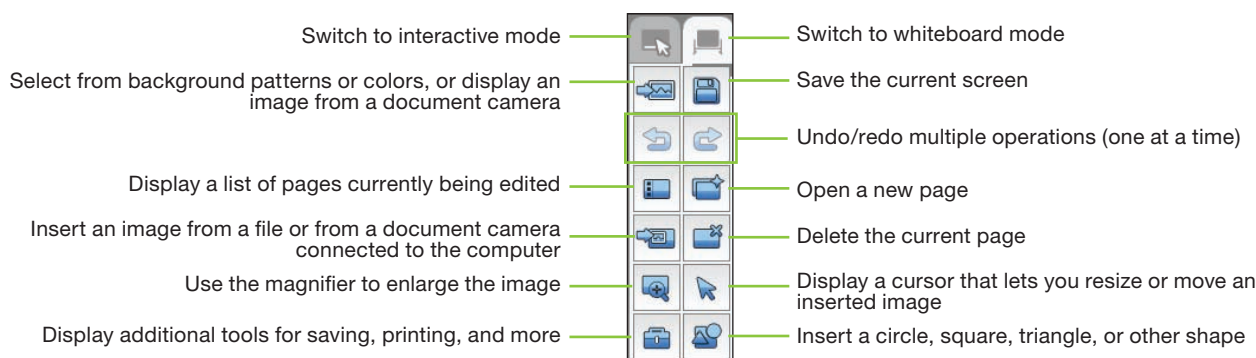
## Tools for Interactive Mode



## Tools for Annotation

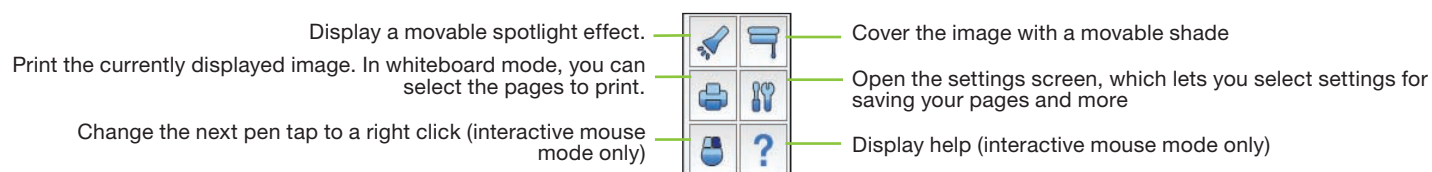




## Tools for Whiteboard Mode



## Tools for Saving, Printing, and More

To display the tools shown below, select the  Other tools icon on the toolbar.



- 1 To save your screen or pages as .jpg files in your **Documents > Easy Interactive Tools** folder, simply select the  Save tool. Easy Interactive Tools names your file automatically based on the date and time.
- 2 To select other locations and formats for saving, select the  Settings tool, then select the **Save settings** tab, as shown on the right.
- 3 Select the location, file name, and file type for saving pages. You can save all your pages as one PDF file.
- 4 If you want to select different settings each time you save, select the **Check when saving** checkbox.
- 5 Select **OK** to close the Settings window.

