



## BrightLink Interaction

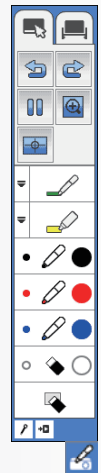
The BrightLink interactive pen turns any wall or table into an interactive area, either with or without a computer.

- With a computer, you can use Easy Interactive Tools (dual pens). This software lets you use the interactive pen as a mouse to annotate, save, and interact with content from your computer.



- Without a computer, you can use the toolbar that is built into the projector (PC Free Annotation). This lets you annotate images from a document camera, tablet, DVD player, or other source connected to your projector.

Students and colleagues can connect their own laptops and annotate on the fly using the built-in toolbar, without installing software.



## Start Here

Follow the steps on this card to get started with your BrightLink:

- 1 Connect your computer and turn on the projector
- 2 Make sure the software is installed
- 3 Calibrate
  - Using the remote control
- 4 Use the interactive pen
  - Choosing the right tool
- 5 Use PC Free Annotation

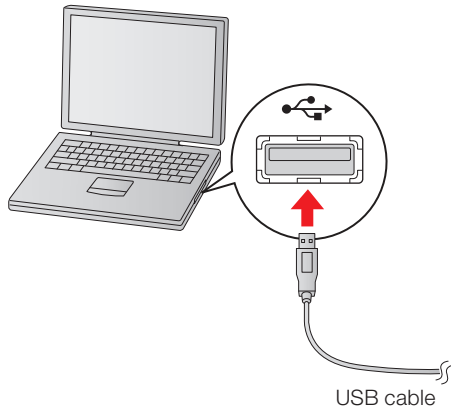
Get a DVD containing BrightLink training videos!

BL

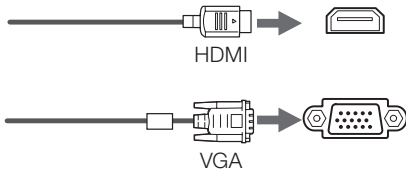
Just click the **BrightLink Training Resources** link on your desktop or go to [www.epson.com/eduresources](http://www.epson.com/eduresources) and request a DVD.

# 1 Connect Your Computer and Turn on the Projector

- 1 Connect the USB cable from the projector's USB TypeB port directly to any available USB port on your computer.




- 2 Connect an HDMI or VGA cable from the projector to your computer.



- 3 Turn on the projector by pressing the red power button on the remote control.

In Windows®, you may see messages about device drivers or new hardware.

- 4 Display an image from your computer. If the image doesn't appear, try one of the following:

- On some Windows laptops, you may need to hold down the **Fn** key on the keyboard and press **F7** or the function key that lets you display on an external monitor. It may have an icon such as , or it may be labelled **CRT/LCD**.
- On a Mac, you may need to open **System Preferences** and select **Displays**. Select the **VGA Display** or **Color LCD** option if necessary, then click the **Arrange** or **Arrangement** tab, and select the **Mirror Displays** check box.
- Try pressing the **Source Search** button on the remote control.

## 2 Make Sure the Software Is Installed

You may already have the software on your computer, or you may need to install it yourself. For Mac OS X, you need Easy Interactive Driver and Easy Interactive Tools. For Windows, you only need Easy Interactive Tools.


Here's how to find out if the software is installed on your computer:

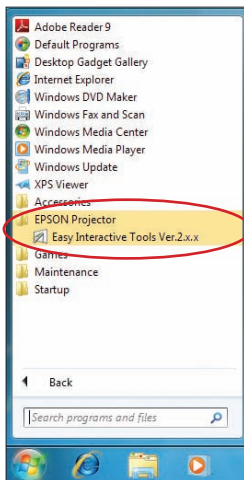
### If you are using a Mac:

Look for the Easy Interactive Driver and Easy Interactive Tools folders in the Application folder on your hard drive. If you see these folders, the software is installed.



### If you are using Windows:

Select  or **Start > All Programs** or **Programs > EPSON Projector > Easy Interactive Tools Ver.2.x.x**. If you see Easy Interactive Tools Ver. 2.x.x, the software is installed.



If the software is not installed, follow the steps in the next column to install it.

### If you need to install the software

Do one of the following:

- Use the CD that came with the projector, labeled “EPSON Projector Software for Easy Interactive Function”



- Download the most up-to-date version from:  
**epson.com/brightlinkdownloads** (U.S.)  
**epson.ca/brightlinkdownloads** (Canada)

For more information about Easy Interactive Tools, see the Easy Interactive Tool Tips sheet in this Welcome Kit or the BrightLink *User's Guide*.

You can also install TeamBoard Draw, an intermediate level annotation program, from the CD that came with the projector.

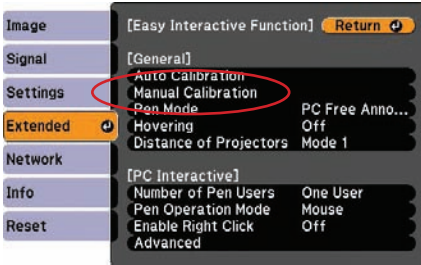


For more information, see the TeamBoard Draw Tips sheet in this Welcome Kit or the TeamBoard videos at **epson.com/brightlink** (U.S.) or **epson.ca/brightlink** (Canada).

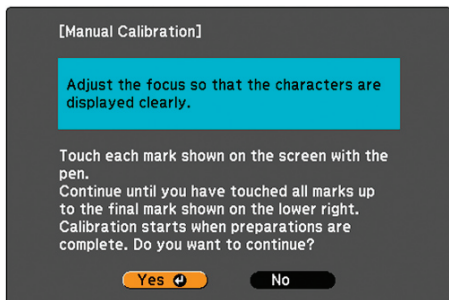
# 3 Calibrate

Calibration coordinates the position of the pen with the location of your cursor. If the pen position and cursor location don't match, you can try auto calibration, or you can calibrate manually for even greater accuracy. You don't need a computer, and you won't need to calibrate again unless the projector or image is moved, or the image is resized.

- 1 To start calibration, press the **User** button on the remote control.
- 2 When you see the Auto Calibration screen, do one of the following:
  - Press **Enter** to try auto calibration, then wait until calibration is complete.
  - Select **No**, then press **Enter** and follow the steps below to calibrate manually.
- 3 When you see this screen, select **Manual Calibration**, then press **Enter**.



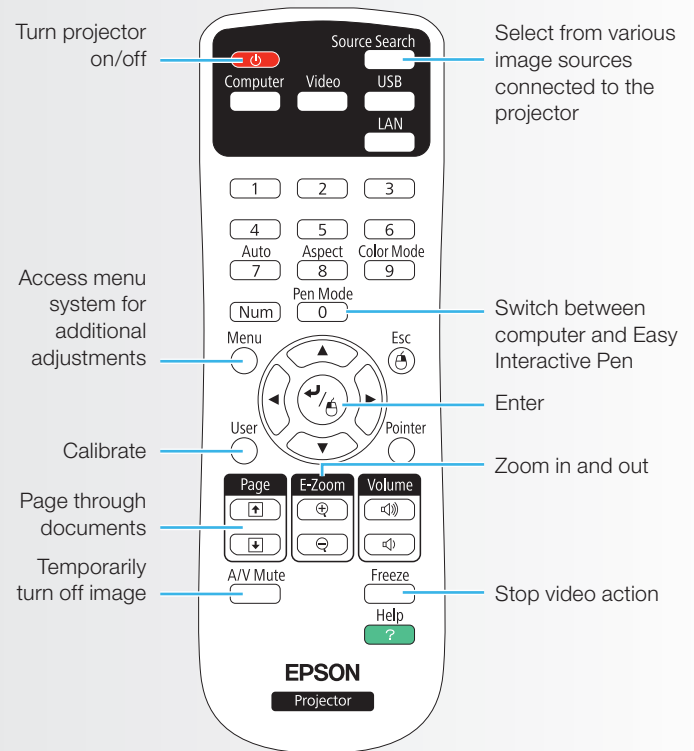
- 4 When you see this screen, press **Enter** to select **Yes**.



- 5 Touch the circles on the screen to perform manual calibration.

For more detailed instructions, see the on-screen BrightLink *User's Guide*.

## Using the Remote Control

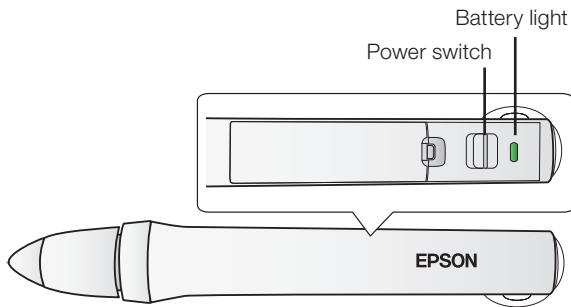


For more information on using the remote control and cool time-saving buttons:

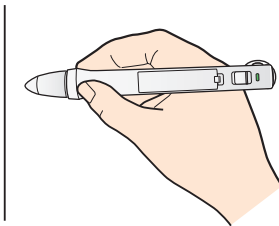
- See the on-screen BrightLink *User's Guide*.
- Go to the training section and watch a video or two at [epson.com/brightlinkvideos](http://epson.com/brightlinkvideos) (U.S.) or [epson.ca/brightlinkvideos](http://epson.ca/brightlinkvideos) (Canada).

## 4 Use the Interactive Pen

Your projector came with one pen (Interactive Pen A) with an orange-colored end. If you want to use dual pen interactivity and annotation, you will need to purchase the optional Interactive Pen B with a blue-colored end (part number V12H523001).



- To turn on the pen, slide the power switch. The green light comes on briefly. If the battery is low, the light flashes.
- Hold the pen perpendicular to the board, as shown below.



- To left-click, tap on the board.
- To double-click, tap twice.
- To right-click, press the board with the pen for about 3 seconds.
- To click and drag, tap and drag with the pen.
- To move the cursor, hover over the board without touching it.
- When you are finished, slide the power switch to turn off the pen.

**Note:** The pen turns off automatically after about 20 minutes of inactivity. Slide the switch to turn the pen back on.

## Choosing the Right Tool

If you already have annotation software, you can use it with BrightLink. If you are using Microsoft® Office 2003 or later, you can also use the “inking tools” to add handwritten notes to your documents and PowerPoint® presentations.

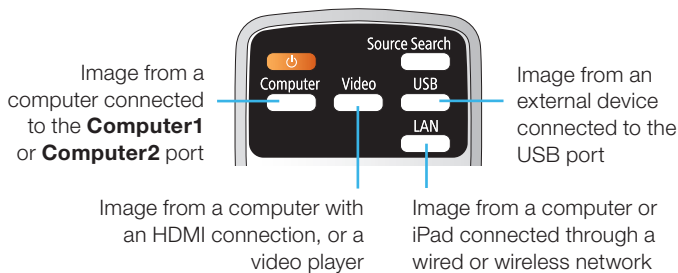
Here are some tips on choosing among the tools that came with your BrightLink projector:

	Built-In Toolbar	Easy Interactive Tools	TeamBoard Draw
Annotate on computer display	•	•	•
Annotate on white background	•	•	•
Annotate on images from document cameras or other sources	•		
Use two pens simultaneously	•	•	
Save annotations		•	•
Record lessons and import/export files			•

# 5 Use PC Free Annotation

The projector's built-in toolbar lets you annotate images from other devices that have been connected to the projector, such as a document camera, tablet, or other source.

- 1 Press one of the **Source** buttons on the remote control to select the source for the image you want to annotate.



- 2 To activate the toolbar, tap the board with the pen. If you don't see the icon, tap the icon and then tap the icon.

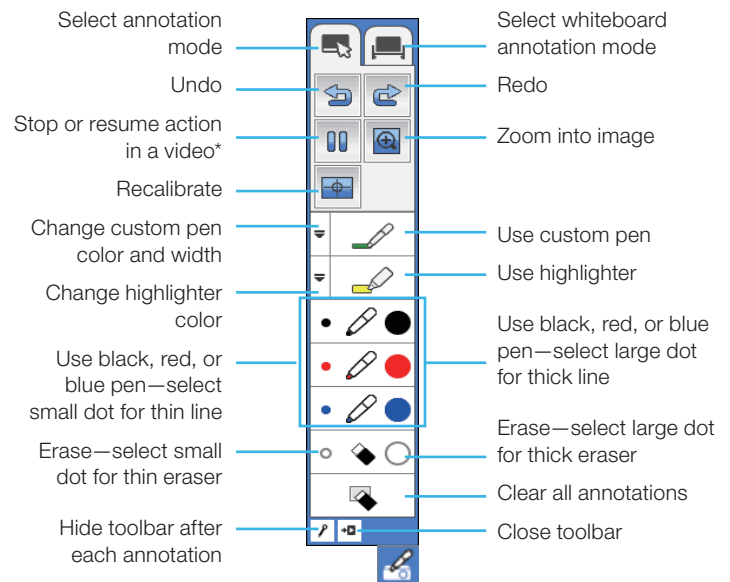
**Note:** If you see either icon, you are already in PC Free Annotation mode.

- 3 To close the toolbar, select the icon at the bottom of the toolbar.

**Note:** Many of the built-in tools are the same as Easy Interactive Tools, but fewer functions are available.

Two different toolbars are available in PC Free Annotation mode, one for annotation mode and one for whiteboard annotation mode.

- Annotation mode displays the built-in toolbar on whatever image is being projected.
- Whiteboard annotation mode lets you project a white or black screen or background pattern, and use the pen to write or draw as you would on a chalkboard or dry erase board.



\* In annotation mode, the select background tool appears instead of this one. It lets you select the background color or pattern.

EPSON and BrightLink are registered trademarks and EPSON Exceed Your Vision is a registered logomark of Seiko Epson Corporation.

General Notice: Other product names used herein are for identification purposes only and may be trademarks of their respective owners. Epson disclaims any and all rights in those marks.

This information is subject to change without notice.

© 2012 Epson America, Inc. 11/12  
Printed in USA

CPD-38383

## Ready to Learn More?

- Sign up for complimentary webinars
- Watch helpful how-to videos
- Find out about cool, free interactive sites



Click the BrightLink Training Resources link on your desktop or go to [www.epson.com/eduresources](http://www.epson.com/eduresources).