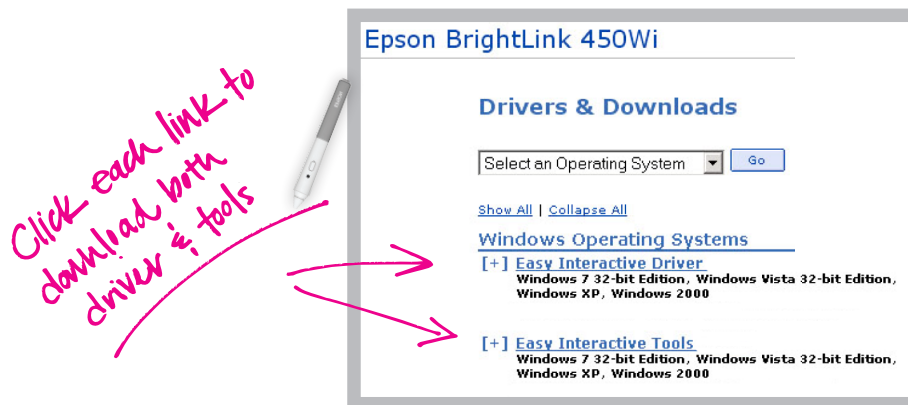


EPSON BRIGHTLINK QUICK-START USER'S GUIDE

After the Epson BrightLink interactive projector has been installed and the image has been adjusted by the installer to fit the screen, whiteboard, or desired projection area on the wall, please follow these simple steps:

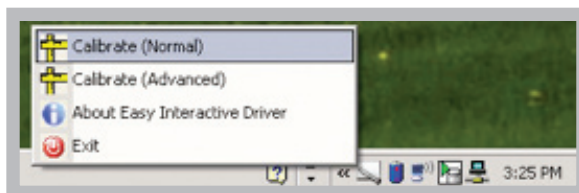
1. **INSTALL** the software (*both Driver AND Tools*) onto your PC/Mac.
 - Download the Epson BrightLink software at www.Epson.com/brightlinkdownloads.



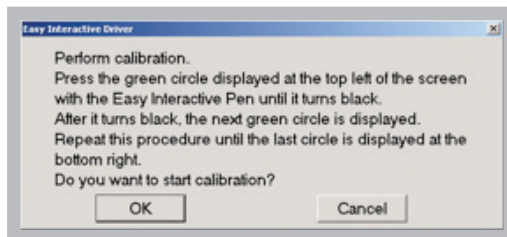
- Install **BOTH** Easy Interactive Driver (EID) and Easy Interactive Tools (EIT).
2. **INSERT** batteries into the projector remote control and interactive pen. Press the button on the pen and the LED will illuminate green when the batteries are correctly installed and charged.
 3. **CONNECT** the video cable and USB cable to your PC/Mac.
 4. **TURN ON** the BrightLink projector using the power button on the remote control or on the projector.
 5. **DISPLAY AN IMAGE** from your computer on the projector.
 - On some PC's, you need to press **Fn + F7** (at the same time) on your keyboard.
 - If the computer screen still does not appear on the projected image, press **SOURCE SEARCH** on the remote control until the BrightLink projector displays the computer screen.
 - On a Mac, in most cases, your computer will recognize that it is connected to an LCD projector and will begin projecting your image. If this does not happen, you need to turn on **DISPLAY MIRRORING**.
 6. **LAUNCH** Easy Interactive Driver (EID) on your computer.
 - For Windows, click **Start > Programs > EPSON Projector > Easy Interactive Driver**.

7. **CALIBRATE** the BrightLink projector using EID and the interactive pen.

- Click the EID icon in your system tray (in the lower right-hand corner of your desktop) and select Calibrate (Normal).



- Read the calibration instructions, then click OK to begin calibration.



- Use your interactive pen to touch the flashing circles on the board. With the tip of the pen, touch each circle once in the sequence that it appears. Continue until all circles stop flashing and turn black.

Tips for using the pen

- Be careful not to cast a shadow over the pen. The projector needs to “see” the pen tip.
- Be sure to hold the pen at a slight angle (not straight / perpendicular to the board).
- If you make a mistake or press the tip of the pen in the wrong place while calibrating, you will need to repeat the calibration process.



8. **LAUNCH** Easy Interactive Tools (EIT) on your computer.

- For Windows, click **Start > Programs > EPSON Projector > Easy Interactive Tools**.
- To see a description of each tool’s function, use the interactive pen to “hover” over the tool’s icon, or “right-click” each tool by pressing the button on the pen and then touching the tool icon.
- For more information regarding the toolbar icons, please refer to the guide that is supplied with the projector or online at www.Epson.com/brightlinkdownloads.

9. **BEGIN** using your BrightLink interactive projector.

- Open documents and folders on your computer using the interactive pen.
- Start applications like PowerPoint, Word, Excel, or Project.
- Experiment with the tools on the EIT toolbar—draw, annotate, and create whiteboard files.

For more details, please review the printed guide that comes with the projector or visit the Epson support website at www.epson.com/support.

