



# **EasyMP Multi PC Projection Operation Guide**



## About EasyMP Multi PC Projection

---

<b>Meeting Styles Proposed by EasyMP Multi PC Projection</b> .....	<b>5</b>
Holding Meetings Using Multiple Images .....	5
Holding Remote Meetings Over a Network.....	5
<b>Installing the Software</b> .....	<b>6</b>
Software Requirements.....	6
Installing.....	7

## Operation Summary

---

<b>Operating Procedures</b> .....	<b>9</b>
-----------------------------------	----------

## Preparations Before Starting a Meeting

---

<b>Preparing to Connect</b> .....	<b>14</b>
Preparing Your Projector .....	14
Preparing Your Computer .....	14
<b>Connecting to the Projectors</b> .....	<b>15</b>
Starting EasyMP Multi PC Projection .....	15
Using the Search Screen.....	16
Searching for and Connecting to the Projectors .....	17
Automatic search .....	17
Manual search .....	18
Profile search .....	19
Connecting to Multiple Projectors (Mirroring) .....	19
Connecting to Projectors on a Different Network.....	20

## Operations During a Meeting

---

<b>Project Screens</b> .....	<b>22</b>
Using the Projection Control Screen .....	22
Changing the Number of Projected Screens.....	23
Changing the Presenter .....	24
Outputting Audio from the Projector .....	24
<b>Ending the Meeting</b> .....	<b>25</b>

## Holding Frequent Meetings with Ease

---

<b>Saving Projector Information</b> .....	<b>27</b>
Creating a Shortcut.....	27
Registering a Profile .....	27
Sharing a Profile.....	28
Exporting the profile you want to share.....	29
Importing the shared profile .....	29

## Troubleshooting

---

<b>Limitations</b> .....	<b>31</b>
Supported Resolutions .....	31
Display Color.....	31
Number of Connections .....	31
Other Limitations .....	31
When Using Windows Vista/Windows 7 .....	32
Limitations when projecting from Windows Photo Gallery or Windows Live Photo Gallery.....	32

Limitations in Windows Aero .....	32
Other Limitations .....	32
<b>Solving Problems .....</b>	<b>33</b>
Cannot connect to the projector you want to use.....	33
Cannot connect the projector and the computer via wireless LAN .....	33
Cannot connect the projector and the computer via wired LAN .....	34
Cannot connect the projector and the computer via the network.....	34
Cannot select the projector .....	35
The Screen is not Projected .....	36
The movie image and audio are not displayed, the image is slow to appear, or either the video or audio stop when projecting using EasyMP Multi PC Projection .....	36
No audio from the projector when connecting with EasyMP Multi PC Projection .....	37
When a connection is made using EasyMP Multi PC Projection, a PowerPoint Slide Show cannot be started.....	37
When a connection has been made using EasyMP Multi PC Projection, the screen will not be refreshed when using an Office application.....	37
<b>Error Message List .....</b>	<b>38</b>
Error Messages when Starting up EasyMP Multi PC Projection.....	38
Error Messages when Searching for and Selecting Projectors.....	39
Error Messages when Projecting .....	40
Error Message when Operating a Profile.....	40

## Appendix

---

<b>Set Options .....</b>	<b>42</b>
User Settings Tab.....	43
General Settings Tab .....	43
Adjust Performance Tab .....	44
Audio Output Tab.....	45
<b>Uninstalling the Software.....</b>	<b>46</b>
Uninstalling.....	46
<b>Notices .....</b>	<b>47</b>
Copyright Notice.....	47
Regarding the use of Names.....	47
Regarding Screen Shots .....	47
Trademarks .....	47

# About EasyMP Multi PC Projection

This chapter introduces the meeting styles you can use with EasyMP Multi PC Projection, and explains how to install the software.

## Meeting Styles Proposed by EasyMP Multi PC Projection

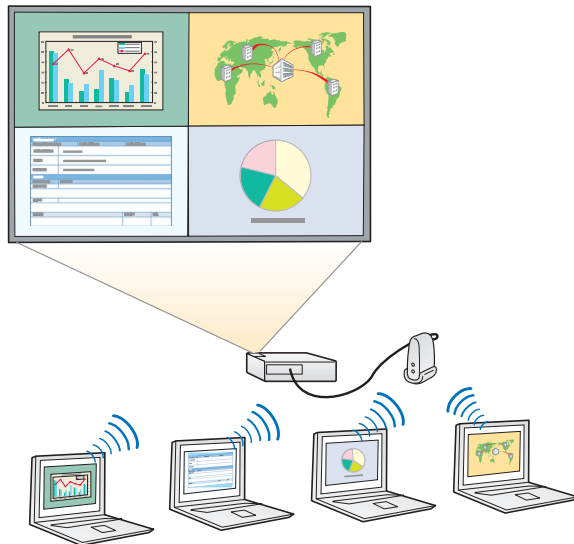
By using EasyMP Multi PC Projection, you can use the projectors to hold interactive meetings.

You can connect up to 32 computers to one projector via a network. You can then select up to four of these connected computers and project their screens.

---

## Holding Meetings Using Multiple Images

☛ "Project Screens" [p.22](#)



### Compare data using up to four screens

You can compare and analyze data by simultaneously projecting screens from multiple computers connected to the network.

## Smoothly change presenters using drag and drop

When connected to the same projector, anyone can change the screen being projected by simply dragging and dropping one of the connected user icons into the projection area. Making these changes allows presenters to clearly express their opinions along with the images.

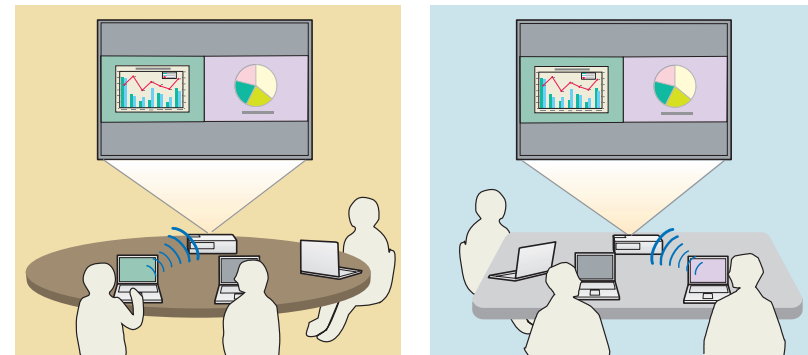
### Share notes in a presentation

You can project the presentation on part of the screen and your notes on another part of the screen, allowing the meeting participants to fully grasp the contents.

---

## Holding Remote Meetings Over a Network

☛ "Connecting to Projectors on a Different Network" [p.20](#)



### Project the same screen in different places

Projectors on the network in remote locations can project the same image. A maximum of four projectors can project the same screen.

## Installing the Software

You can find EasyMP Multi PC Projection on the EPSON Projector Software for Meeting & Presentation CD-ROM. Install the software on the computer you are using.

## Software Requirements

EasyMP Multi PC Projection runs on computers that meet the following requirements.

## For Windows

OS	Windows XP*	Professional 32-bit Home Edition 32-bit Tablet PC Edition 32-bit
	Windows Vista	Ultimate 32-bit Enterprise 32-bit Business 32-bit Home Premium 32-bit Home Basic 32-bit
	Windows 7	Ultimate 32/64-bit Enterprise 32/64-bit Professional 32/64-bit Home Premium 32/64-bit Home Basic 32-bit Starter 32-bit
CPU	Mobile Pentium III 1.2 GHz or faster Recommended: Pentium M 1.6 GHz or faster	
Amount of Memory	256MB or more Recommended: 512MB or more	
Hard Disk Space	20MB or more	
Display	Resolutions greater than XGA (1024 x 768), or less than WUXGA (1920 x 1200) Display color: 16-bit color (display color approx. 32,000 colors) or more	

\* Except for Windows XP without any service packs installed, and Windows XP Service Pack 1.

## For Mac OS X

OS	Mac OS X 10.4.x 32-bit Mac OS X 10.5.1 or later* 32-bit Mac OS X 10.6.x 32/64-bit Mac OS X 10.7.x 32/64-bit
CPU	PowerPC G3 900 MHz or faster Recommended: Core Duo 1.83 GHz or faster
Amount of Memory	256MB or more Recommended: 512MB or more
Hard Disk Space	20MB or more
Display	Resolutions greater than XGA (1024 x 768), or less than WUXGA (1920 x 1200) Display color: 16-bit color (display color approx. 32,000 colors)

\* Operation is not guaranteed in Mac OS X 10.5.0 because the Firewall settings are not set correctly when the version is updated.

## Installing

Make sure you check the following points before starting installation.

- Close all running applications before starting installation.
- When the language selected for the installation varies from that of the OS being used, the screens may not be displayed correctly.

## For Windows



You need administrator authority to install EasyMP Multi PC Projection.



**1 Turn on your computer.**



**2 Insert the EPSON Projector Software for Meeting & Presentation CD-ROM into your computer.**



**3 The installer starts automatically.**



If the installer does not start automatically, open the CD-ROM drive from **My Computer** (or **Computer**), and then double-click **InstallNavi**.



**4 Follow the on-screen instructions to install.**

## For Mac OS X



**1 Turn on your computer.**



**2 Insert the EPSON Projector Software for Meeting & Presentation CD-ROM into your computer.**



**3 Double-click the Install Navi icon in the EPSON window.**



**4 Follow the on-screen instructions to install.**



You can download the latest version of EasyMP Multi PC Projection from the following Epson web site. Go to [www.epson.com](http://www.epson.com) and select your location.

# Operation Summary

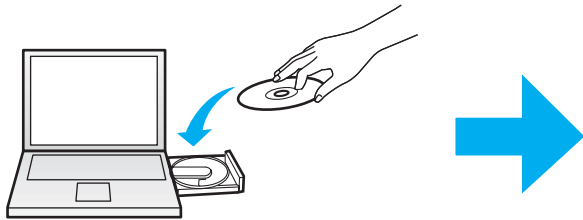
This chapter explains the basic procedures for using EasyMP Multi PC Projection in a meeting.



## Operating Procedures

### 1 Install EasyMP Multi PC Projection.

☞ [p.6](#)



Follow the on-screen instructions to install.

### 2 Start EasyMP Multi PC Projection.

☞ "Starting EasyMP Multi PC Projection" [p.15](#)

**For Windows**

**Start - All Programs - EPSON Projector - EasyMP Multi PC Projection  
- EasyMP Multi PC Projection Ver. x.xx**

**For Mac OS**

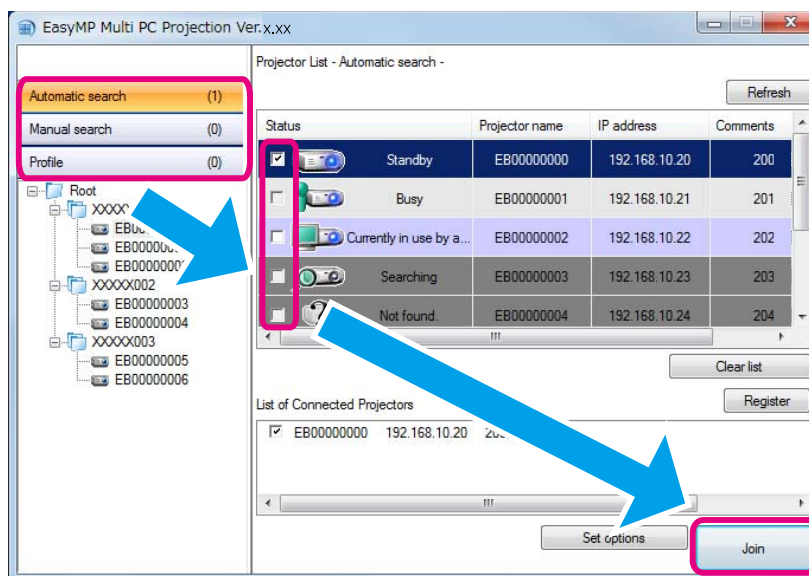
**Applications - EasyMP Multi PC Projection - EasyMP Multi PC Projection**

### 3 Connect to the projectors.

☛ "Searching for and Connecting to the Projectors" p.17

Select **Automatic search** to search for the projectors.

Select the projectors you want to connect to, and then click **Join**.



• You can search for the projectors using three different methods; **Automatic search**, **Manual search**, and **Profile**. See the following for more details on each search method.

☛ "Using the Search Screen" p.16

• Once you have created a shortcut for the projectors you searched for, you can start EasyMP Multi PC Projection by double-clicking the shortcut.

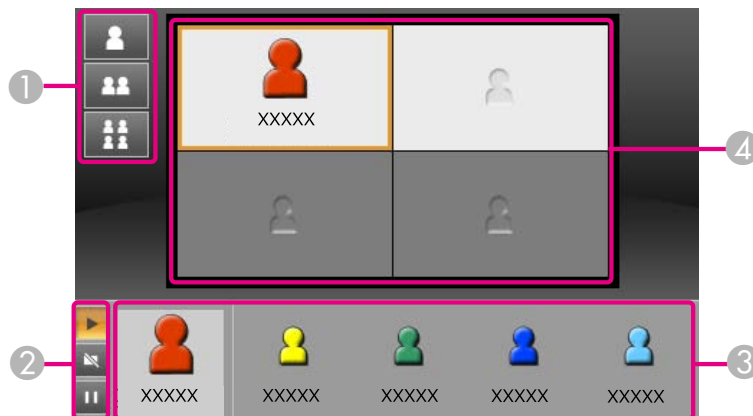
The projectors saved in the shortcut file is automatically searched for when starting from the shortcut.

☛ "Creating a Shortcut" p.27




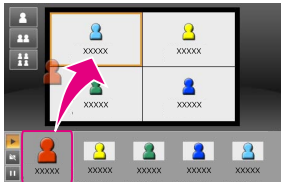



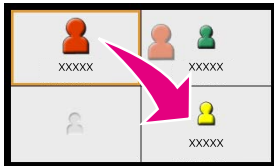
## 4 Project screens.

☞ "Using the Projection Control Screen" p.22

On the projection control screen, the projection area is divided into four panels. You can change the number of available panels and change which computer's screens are projected.



The computer's screen for the first user to connect is projected in the top left panel. Users who connect later can project by dragging and dropping the user's icons into the available (white) panels.

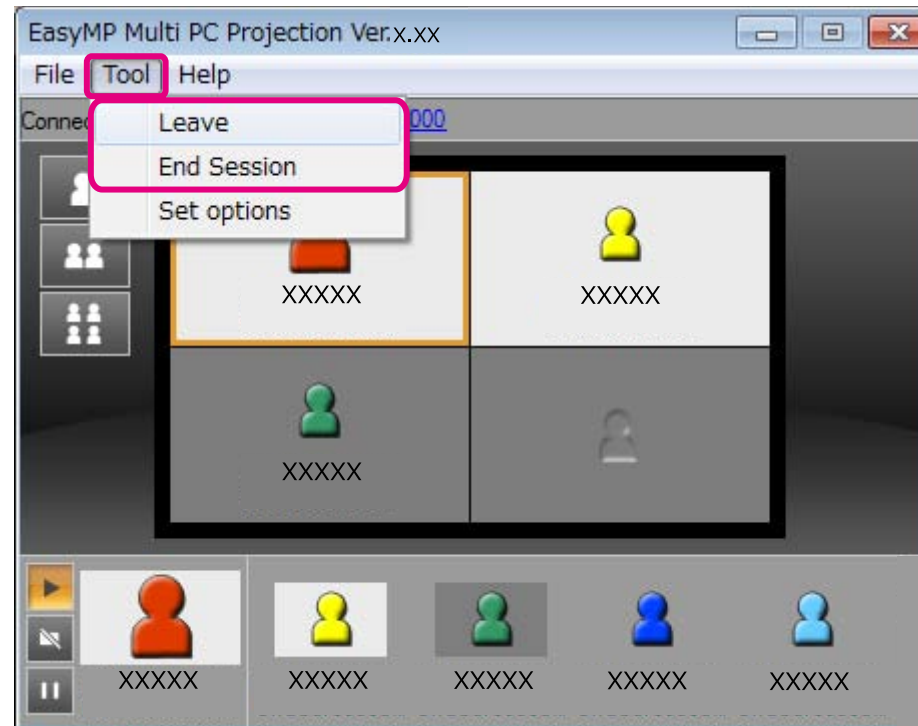
1	<p><b>Changing the number of projected screens</b></p> <p> : Project one screen at full screen.</p> <p> : Divide the projected screen in two.</p> <p> : Divide the projected screen in four.</p>	3	<p><b>Projecting the computer's screen</b></p>  <p>Drag and drop the user's icon to a white panel. Your icon is always displayed on the left. You can project your own screen as well as the screens for other participants.</p>
2	<p><b>Operating your screen's status</b></p> <p> : Project the computer's screen as it is.</p> <p> : Stop projecting.</p> <p> : Pause the computer's screen currently being displayed. The projected screen does not change, even if you make changes on the computer's screen.</p>	4	<p><b>Changing the projection position</b></p>  <p>Drag and drop the user's icon to change the projection position.</p>

## 5 End the meeting.

☞ "Ending the Meeting" p.25

Select **Leave** or **End Session** from the **Tool** menu to stop projecting.

When you select **Leave** or **End Session**, you are returned to the search screen.



### Leave

The connection between your computer and the projectors is cut.

### End Session

The connection between all computers and projectors participating in the session is cut.

# Preparations Before Starting a Meeting

This chapter explains the settings you need to make before starting a meeting.

## Preparing Your Projector

Follow the steps below to put the projector into connection standby status. When connecting via wired LAN, check that the projector is connected to the network with a commercially available network cable. When connecting via wireless LAN, install the wireless LAN unit in the projector.

**1 Turn on your projector.**

**2 Make the projector's network settings.**

When connecting the computer to the projector via wireless LAN, connect using the Advanced connection mode. You cannot connect using the Quick connection mode.

See your projector *User's Guide* for details on network settings.

**3 Change the projector's input source to LAN.**

The LAN standby screen is displayed.



## Preparing Your Computer

Follow the steps below to connect the computer to the projectors and start projecting.

**1 Install EasyMP Multi PC Projection on the computer.**

☛ "Installing the Software" [p.6](#)

**2 Make the computer's network settings, and connect the computer to the network.**

☛ Computer's documentation



When the computer you are using is already connected to the network, you do not need to make network settings on the computer.

**3 Start EasyMP Multi PC Projection.**

☛ "Starting EasyMP Multi PC Projection" [p.15](#)

## Connecting to the Projectors

This section explains how to search for and connect to the projectors on the network.

---

## Starting EasyMP Multi PC Projection

Start EasyMP Multi PC Projection using one of the following methods.

### For Windows

- 1 Click Start, and then select All Programs.**
- 2 Select EPSON Projector, and then EasyMP Multi PC Projection.**
- 3 Click EasyMP Multi PC Projection Ver. x.xx.**

EasyMP Multi PC Projection starts, and the search screen is displayed.

### For Mac OS X

- 1 Open the Applications folder, and then double-click the EasyMP Multi PC Projection folder.**
- 2 Double-click EasyMP Multi PC Projection.**

EasyMP Multi PC Projection starts, and the search screen is displayed.

### When starting from a shortcut

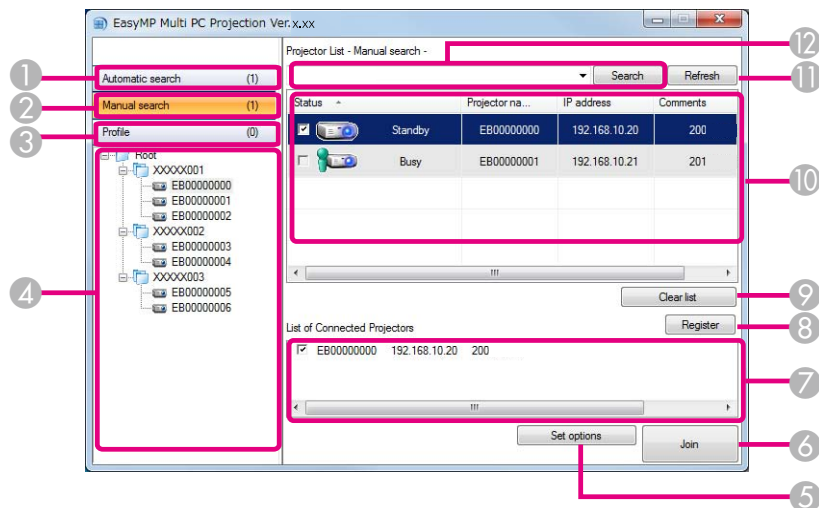
When you have created a shortcut, double-click the shortcut file (.pme) to start EasyMP Multi PC Projection.

See the following for more details on creating a shortcut.

☛ "Creating a Shortcut" [p.27](#)

## Using the Search Screen








When you start EasyMP Multi PC Projection, the following search screen is displayed.



1	<p><b>Automatic search</b></p> <p>Searches for the projectors on the network to which the computer is connected.</p> <p>☛ "Automatic search" p.17</p>
2	<p><b>Manual search</b></p> <p>Searches for the projectors on the network by specifying the projector's IP address or projector name.</p> <p>☛ "Manual search" p.18</p>

3	<p><b>Profile</b></p> <p>Searches for the projectors on the network by using the projector information saved previously.</p> <p>☛ "Profile search" p.19</p>
4	<p><b>Profile list</b></p> <p>Displays the registered profiles (projector information).</p> <p>When you double-click the profile, the projectors registered in the profile is searched for on the network.</p> <p>☛ "Profile search" p.19</p>
5	<p><b>Set options</b></p> <p>Displays the Set options screen.</p> <p>☛ "Set Options" p.42</p>
6	<p><b>Join</b></p> <p>Connects to the selected projectors.</p>
7	<p><b>List of Connected Projectors</b></p> <p>Displays information on the projectors selected from the Projector List. Even if the search mode is changed, the content of the List of Connected Projectors remains the same.</p>
8	<p><b>Register</b></p> <p>Registers the projectors from the List of Connected Projectors to a profile.</p> <p>☛ "Registering a Profile" p.27</p>
9	<p><b>Clear list</b></p> <p>Clears information displayed in the Projector List and the List of Connected Projectors.</p>



10	<b>Projector List</b>	
	Displays a list of the projectors found on the network. You can then select projectors to connect.	
	The search results for each search mode ( <b>Automatic search</b> , <b>Manual search</b> , and <b>Profile</b> ) are displayed in separate lists.	
	The status of each projector is indicated by an icon.	
		Standby Available. You can connect to the projector.
		Busy Available. Although other computers are connected to the projector, you can also connect at the same time.
		Mirroring... Available. You can connect to a group of multiple projectors projecting the same image (mirroring). ☛ "Connecting to Multiple Projectors (Mirroring)" <a href="#">p.19</a>
		Currently in use by another application Not available. The projector is displaying the network configuration screen, or the projector is being used by other projector software.
	Searching Not available. A Manual search or Profile search is already being used to search for the projector.	
	Not found. Not available. The specified projector could not be found using Manual search or Profile search.	
	Unsupported Projectors Not available. The projector is not compatible with EasyMP Multi PC Projection.	
11	<b>Refresh</b> Updates information in the Projector List.	

12	Manual search box When using Manual search, enter the projector's IP address or the projector name. Click the <b>Search</b> button to search for the specified projector.
----	---

## Searching for and Connecting to the Projectors

You can search for projectors on the network using one of the following methods.

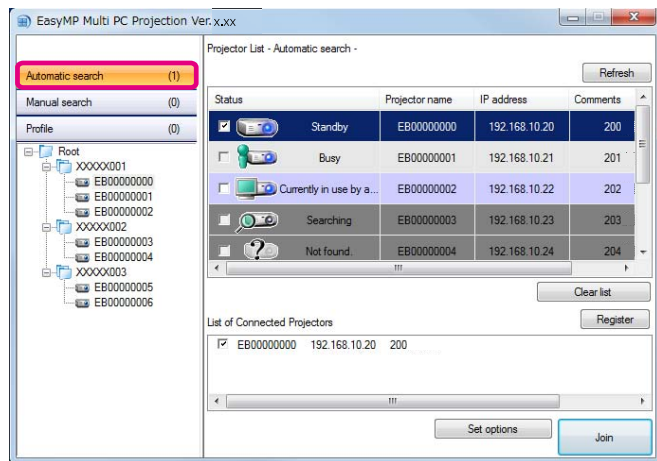
### Automatic search



**Start EasyMP Multi PC Projection.**

☛ "Starting EasyMP Multi PC Projection" [p.15](#)

**2 Click Automatic search.**



The EasyMP Multi PC Projection searches for projectors on the network.

When you click **Refresh**, the latest information is displayed.

**3 Select the projectors you want to connect to from the list displayed, and then click Join.**

The projection control screen is displayed.

☞ "Using the Projection Control Screen" [p.22](#)



When a projector keyword has been set, the keyword entry screen is displayed when you connect to the projector. Enter the keyword, and then click **OK**.

The projector keyword is displayed on the LAN standby screen. If a user is already connected, check the keyword with the connected user.

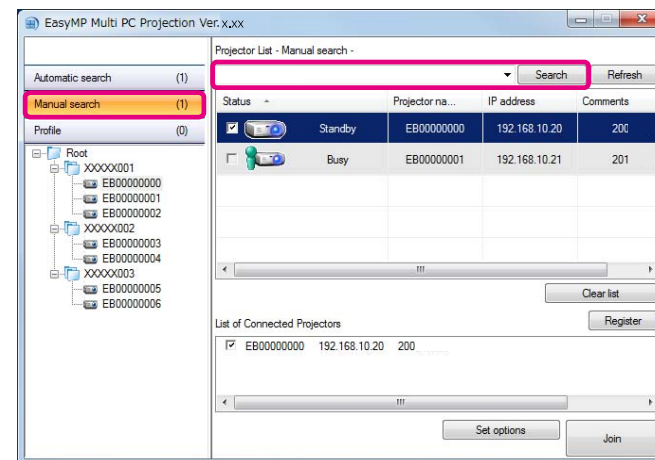
## Manual search

**1 Start EasyMP Multi PC Projection.**

☞ "Starting EasyMP Multi PC Projection" [p.15](#)

**2 Click Manual search.**

**3 Enter the IP address or the projector name for the projector you want to connect to, and then click Search.**



The EasyMP Multi PC Projection searches for the specified projector on the network.

**4 Select the projectors you want to connect to from the list displayed, and then click Join.**

The projection control screen is displayed.

☞ "Using the Projection Control Screen" [p.22](#)



When a projector keyword has been set, the keyword entry screen is displayed when you connect to the projector. Enter the keyword, and then click **OK**.

The projector keyword is displayed on the LAN standby screen. If a user is already connected, check the keyword with the connected user.

## Profile search

**1**

**Start EasyMP Multi PC Projection.**

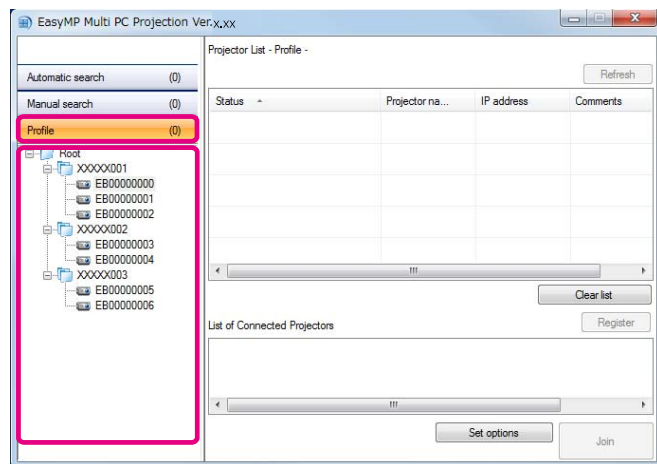
☛ "Starting EasyMP Multi PC Projection" p.15

**2**

**Click Profile.**

**3**

**From the Profile list, double-click the folder or the projector icon for the profile you want to use.**



The EasyMP Multi PC Projection searches for the specified projector on the network.

**4**

**Select the projectors you want to connect to from the list displayed, and then click Join.**

The projection control screen is displayed.

☛ "Using the Projection Control Screen" p.22



When a projector keyword has been set, the keyword entry screen is displayed when you connect to the projector. Enter the keyword, and then click **OK**.

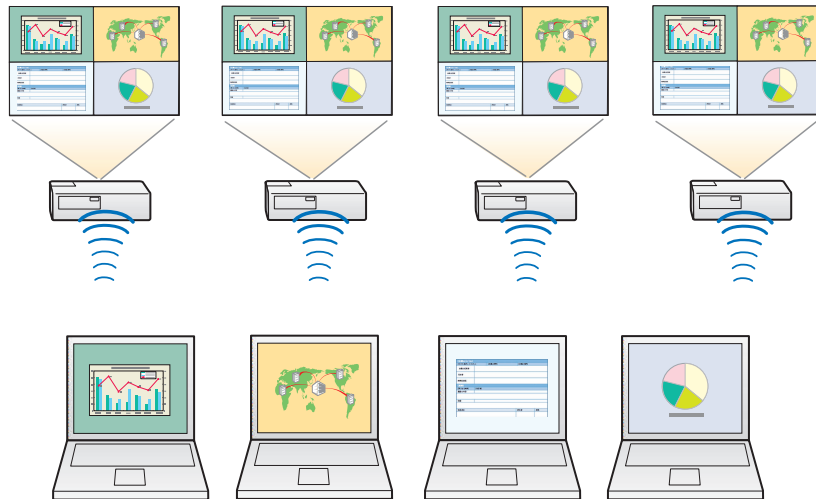
The projector keyword is displayed on the LAN standby screen. If a user is already connected, check the keyword with the connected user.

## Connecting to Multiple Projectors (Mirroring)

Connecting to multiple projectors and projecting the same image is known as mirroring. You can perform mirroring with up to four projectors.



You cannot perform mirroring with projectors that are not compatible with EasyMP Multi PC Projection.

**1**

**Start EasyMP Multi PC Projection, and search for the projectors.**

☛ "Searching for and Connecting to the Projectors" [p.17](#)

**2**

**Select up to four projectors that you want to connect to from the list displayed, and then click Join.**

The projection control screen is displayed.



• *When forming a projector mirroring group*

*If you select one projector from a group, all of the projectors in that group are selected.*

*When you select a projector in a mirroring group, you can only select projectors in that group.*

• *When other participants are already connected to the projector*

*You can only select the same combination of projectors as the user who connected before you. You cannot connect to projectors that are not included in the combination.*

## Connecting to Projectors on a Different Network

By connecting the projectors to a computer, you can project the computer's screen at remote locations (on different subnets).

In Automatic search, projectors on different subnets are not found because searches are only performed in the same subnet.

You can connect to projectors on a different subnet using one of the following methods.

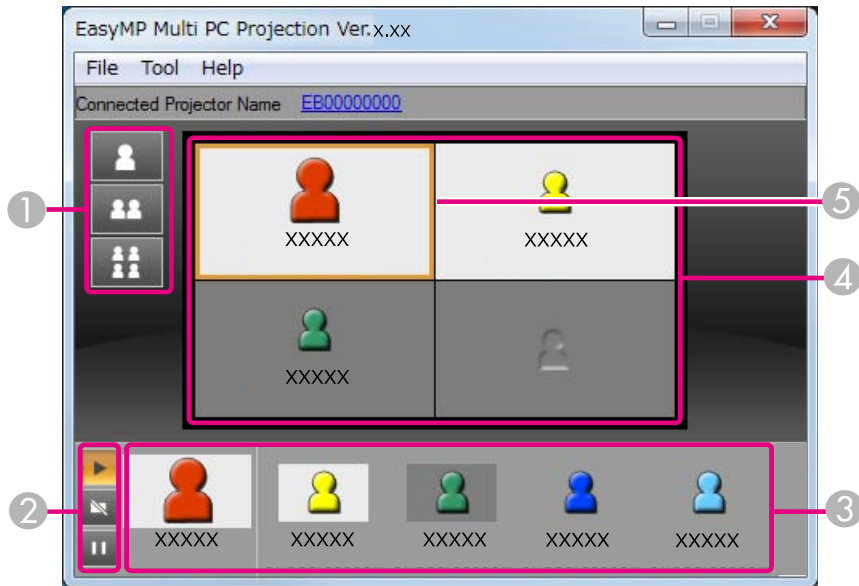
- Specify either an IP address or projector name and perform a search.
  - ☛ "Manual search" [p.18](#)
- Perform a search based on a profile.
  - ☛ "Profile search" [p.19](#)

# Operations During a Meeting







This chapter explains how to control the screen being projected during a meeting.

## Using the Projection Control Screen

When you connect to projectors, the following screen is displayed.



See the following table for more details on the function of each item.

1	<p><b>Change projection buttons</b></p> <p>Changes the number of panels available for projecting computer's screens.</p> <p>☛ "Changing the Number of Projected Screens" <a href="#">p.23</a></p>
	<p> Projects the screen from one computer at full screen without dividing the projected screen.</p>
	<p> Projects the screens from up to two computers at the same time by dividing the projected screen in two.</p>
	<p> Projects the screens from up to four computers at the same time by dividing the projected screen in four.</p>
2	<p><b>Screen control buttons</b></p> <p>Control the image projected from your computer's screen.</p> <p> Project the computer's screen as it is.</p> <p> Stop projecting. Projects a black screen while it is stopped.</p> <p> Pause the computer's screen currently being displayed. The projected screen does not change, even if you make changes on the computer's screen.</p>

3	<p><b>User's area</b></p> <p>Displays the user names for the computers connected to the projectors. Your computer is always displayed on the left-hand side of the user's area. You can connect up to 16 computers to the projector.</p> <p>When you drag and drop a user's icon to the projection area, the computer's screen is projected. The background for user's icons that are currently being projected is white.</p> <p>The default setting for the user name is the computer name. You can change the user name in Set options.</p> <p>☞ "User Settings Tab" <a href="#">p.43</a></p>
4	<p><b>Projection area</b></p> <p>When the background color for a panel is white, the computer's screen for the user's icon in that panel is projected. If there is no user icon in a white panel, a black screen is projected.</p> <p>By dragging and dropping the user's icon, you can change the screen being projected and the position at which the computer's screen is projected.</p> <p>☞ "Changing the Presenter" <a href="#">p.24</a></p>
5	<p><b>Target frame</b></p> <p>Move the target frame by clicking on one of the panels in the projection area. You can project the computer's screen where the target frame is positioned when you click one of the change projection buttons.</p>



When you click the projector name next to Connected Projector Name, Web Remote is displayed. In Web Remote, you can make projector operations on your computer's screen in the same way as using the remote control.

See your projector *User's Guide* for details on Web Remote.

## Changing the Number of Projected Screens

You can divide the projected image into a maximum of four areas. By changing the number of divisions, you can project screens from multiple computers at the same time, or project one computer's screen at full screen.



**Select the user's icon in the projection area.**

Move the target frame.



**Click , , or  to change the number of screen divisions.**



The selected screen is projected at full screen.



The projected screen is divided in two, and the selected screen and the next screen are projected.



The projected screen is divided in four, and the computer's screens in all four panels in the projection area are projected.

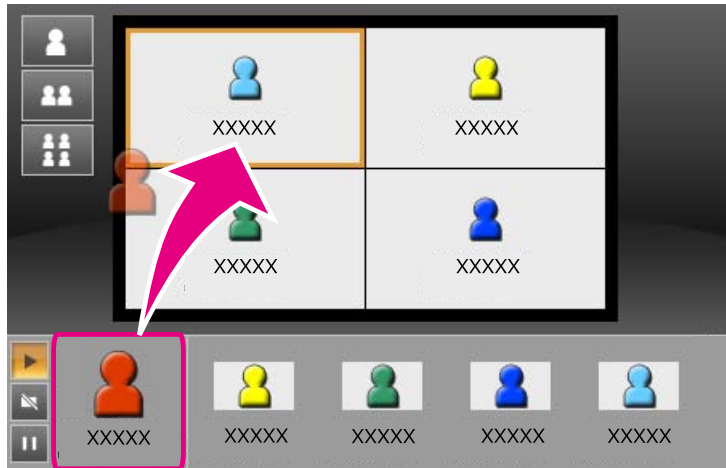


You can also change the number of screen divisions by right-clicking in the projection area. Right-click the icon, and then select the number of divisions.

## Changing the Presenter

### When changing the projection screen

Drag and drop an icon in the user's area to the panel you want to project.



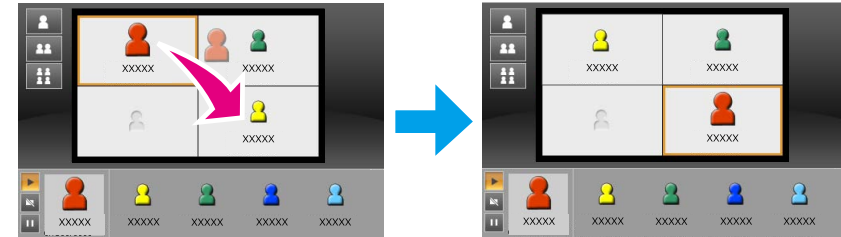
To finish projecting, drag and drop the icon from the projection area to the user's area.





By right-clicking an icon in the user's area, you can set the projection position.

### When changing the projection position

In the projection area, drag and drop an icon you want to move to the target position.



When  or  are selected, you can change the computer's screen being projected by switching the icon being projected (the icon in the white panel) with an icon not being projected (the icon in the black panel).

## Outputting Audio from the Projector

You can output the computer's audio from the projector when one computer is connected to one projector and is projecting in full screen.

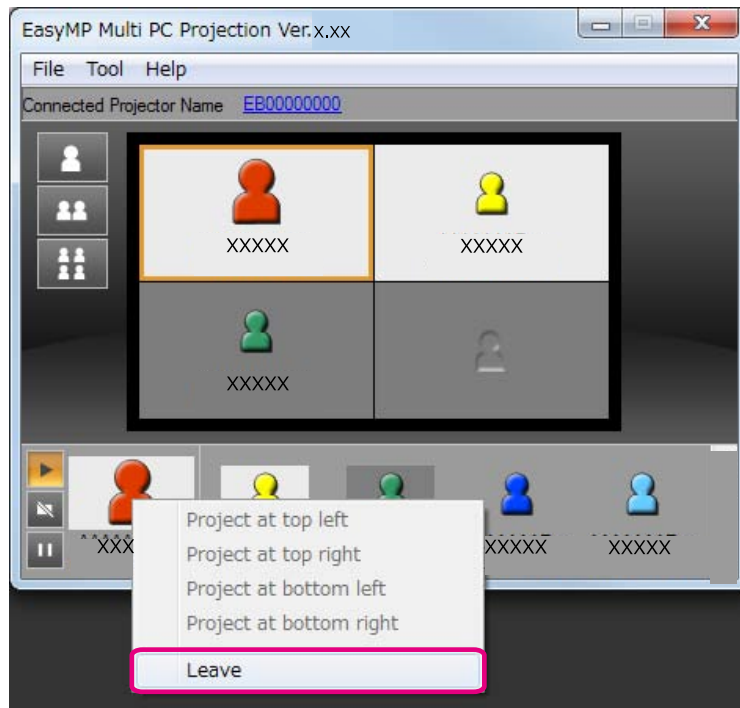


## Ending the Meeting

When you want to end a session, use one of the following methods to disconnect from the projectors.

### When only you disconnect

Right-click your icon in the user's area, and then select **Leave**.



You can also disconnect by selecting **Leave** from the **Tool** menu.

### When ending the session

Select **End Session** from the **Tool** menu. All computers and projectors participating in the session are disconnected.

## Holding Frequent Meetings with Ease

This chapter explains how to save and organize projector information used during a meeting allowing you to hold subsequent meetings with ease.

## Saving Projector Information

By saving the projector information used during the first meeting, you can participate smoothly in subsequent meetings when they are held in the same environment.

You can save projector information by creating a shortcut or registering the information to a profile.

---

## Creating a Shortcut

When creating a shortcut, information for the selected projectors is saved in the shortcut file. When you start EasyMP Multi PC Projection from the shortcut, EasyMP Multi PC Projection automatically searches for the projectors saved in the shortcut file.

When holding regular meetings in the same environment, creating a shortcut allows you to start meetings smoothly.

You can use one of the following methods to create a shortcut:

- Right-click the projector to be saved from the **Profile** or **Projector List**, and then select **Create Shortcut**.
- Select the projector to be saved from the **Profile** or **Projector List**, and then drag and drop to the location where you want to create the shortcut.



Creating a folder shortcut saves information for multiple projectors contained in the folder.

You can search for multiple projectors at the same time when you start the program.

---

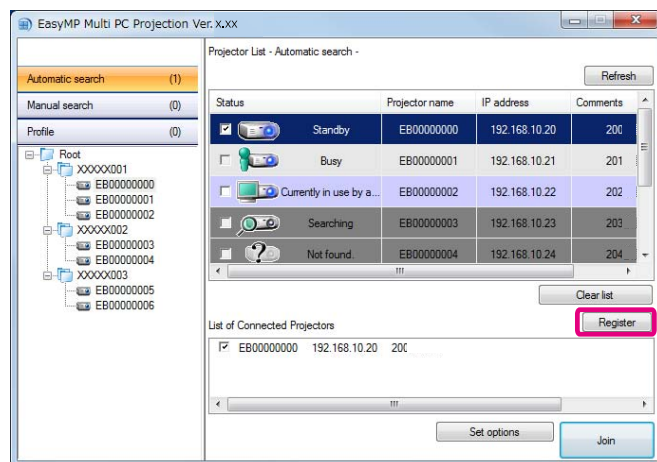
## Registering a Profile

You can save information for the projectors you have searched for in a profile. When connecting to the same projectors next time, you can easily search for the projectors.

You can register a profile by using one of the following methods.

## 1 When registering projectors from the List of Connected Projectors

If you want to register projectors displayed in the List of Connected Projectors to a Profile, click **Register**.



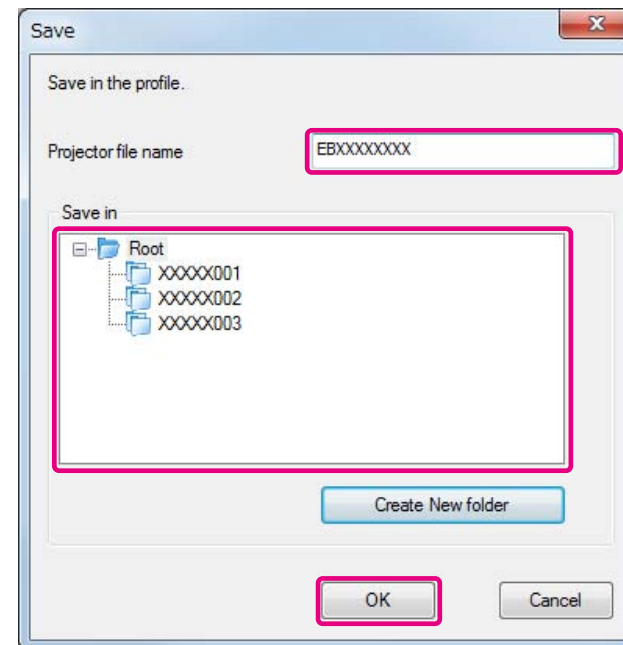
### When only registering a specific projector

If you want to register one specific projector to a profile, right-click the projector you want to register from the projector list, and then select **Add Item to Profile**.

### When registering all projectors found by the search

Right-click one of the projectors in the projector list, and then select **Add All to Profile**. You can register all of the projectors displayed in the projector list.

## 2 Enter the projector name and select or create the folder where you want to save the profile, and then click OK.



- To register a projector, you can drag and drop the projector you want to register from the projector list to the **Profile** list folder.
- The folder structure can be six folders deep.

## Sharing a Profile

You can share the created profile list with other participants. This allows participants joining a session for the first time to easily search for the projectors.

## Exporting the profile you want to share

Follow the steps below to export the registered profile.

- 1 In the profile list, right-click the folder containing the profile you want to share, and then select Export.**
- 2 Select where you want to save the profile (.mplist), and then save the profile.**

## Importing the shared profile

Follow the steps below to import the shared profile to EasyMP Multi PC Projection.

- 1 In the profile list, right-click the folder containing the profile you want to import, and then select Import.**
- 2 Select the profile (.mplist), and then click Open.**

Click **OK** to complete the import.



You can also import a profile (.plist) exported using EasyMP Network Projection. However, you cannot import a profile in which the projectors connected using Quick connection mode.

# Troubleshooting

This chapter identifies possible problems and explains how to handle them.

## Limitations

When projecting computer images while running EasyMP Multi PC Projection, the following restrictions apply.

---

## Supported Resolutions

The following computer screen resolutions can be projected. You cannot connect to a computer with a resolution greater than WUXGA.

- VGA (640 × 480)
- SVGA (800 × 600)
- XGA (1024 × 768)
- SXGA (1280 × 960)
- SXGA (1280 × 1024)
- SXGA+ (1400 × 1050)
- WXGA (1280 × 768)
- WXGA (1280 × 800)
- WXGA+ (1440 × 900)
- UXGA (1600 × 1200)
- WUXGA (1920 × 1200)

When using a computer screen with a unique aspect ratio, depending on the resolution of the computer and the projector, the resolution is increased or decreased so as not to impair the image quality.

Depending on the resolution, at times the vertical or horizontal margins may be projected in black.

---

## Display Color

The following number of screen colors can be projected.

Windows	Mac OS
16-bit color	About 32,000 colors (16-bit)
32-bit color	About 16.7 million colors (32-bit)

---

## Number of Connections

You can connect up to four projectors to one computer and project simultaneously. (Multi-screen is not supported.)

You can connect up to 32 computers to one projector at the same time. (Up to 16 computers, if any of the computers are running an older version of the EasyMP Multi PC Projection software [version 1.05 or older].)

---

## Other Limitations

- If the transmission speed of the Wireless LAN is low, the network might be cut off unexpectedly.
- Audio can only be transferred when connected to one projector and projecting one computer's screen at full screen. If multiple projectors are connected or if the projected screen is divided, audio cannot be transferred during projection.
- When videos are played back, they do not play back as smoothly as when displayed on the computer.
- Applications that use part of DirectX functions may not be displayed correctly. (Windows only)
- Cannot project full screen MS-DOS prompts. (Windows only)

- The image on the computer screen and the image projected by the projector may not match exactly.

## When Using Windows Vista/Windows 7

Note the following points when using EasyMP Multi PC Projection with a computer running Windows Vista/Windows 7.

## Limitations when projecting from Windows Photo Gallery or Windows Live Photo Gallery

Note the following two limitations when launching Windows Photo Gallery or Windows Live Photo Gallery when EasyMP Multi PC Projection is running.

- Slide Shows are played back in simple mode when projecting from Windows Photo Gallery or Windows Live Photo Gallery.

Because the toolbar is not displayed, you cannot change the Theme (effects) while playing a slide show, regardless of the Windows Experience Index rating.

- You cannot play movies.

## Limitations in Windows Aero

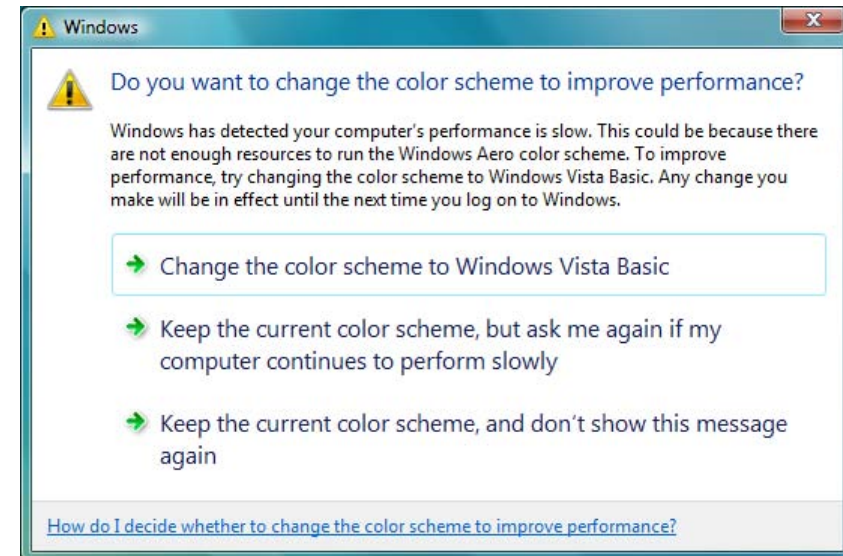
Note the following two limitations when the window design for your computer is Windows Aero.

- The layered window is projected regardless of the **Transfer layered window** setting from **Set options** in EasyMP Multi PC Projection.

☛ "Adjust Performance Tab" [p.44](#)

- A few minutes after you connect a computer to the projector over a network with EasyMP Multi PC Projection, the following message may be displayed.

It is recommended that you select **Keep the current color scheme, and don't show this message again**. This selection is enabled until the computer is restarted.



## Other Limitations

- Cannot project Windows Media Center images at full screen. You can project in Window display.
- If audio stops during playback when transferring audio from the computer to the projector using EasyMP Multi PC Projection, try restarting the application you are using.



## Cannot connect to the projector you want to use


### Cannot connect the projector and the computer via wireless LAN

Check	Remedy
Is the Wireless LAN unit connected?	Check that the Wireless LAN unit is securely connected.
Is the projector connection mode set to Quick connection mode?	EasyMP Multi PC Projection cannot connect using Quick connection mode. Set the connection mode to Advanced connection mode. See your projector <i>User's Guide</i> for details.
For wireless LAN connections, is the wireless LAN setting enabled when the computer is in power save mode?	Enable the Wireless LAN.
Are there any obstacles between the wireless LAN connection access point and the computer or projector?	Sometimes the indoor environment prevents the projector from being found in a search. Check for any obstacles between the access point and the computer or projector, and change their position to improve communication.
Is the computer's wireless LAN radio strength set to low?	Set the radio strength to maximum.
Does the Wireless LAN conform to 802.11a, 802.11b, or 802.11g?	It is only compatible with standards 802.11a, 802.11b, and 802.11g, and not with other standards such as 802.11.
Is <b>Wireless LAN Power</b> set to <b>Off</b> in the projector's <b>Wireless LAN</b> menu?	Set <b>Wireless LAN Power</b> to <b>On</b> in the projector's <b>Wireless LAN</b> menu from the Configuration menu. See your projector <i>User's Guide</i> for details on the projector's wireless LAN settings.
Is the SSID setting different?	Set the computer, the access point, and the projector to the same SSID.
Is the same WEP key set?	When selecting <b>WEP</b> from <b>Security</b> , set the access point, the computer, and the projector to the same WEP key.

## Cannot connect the projector and the computer via wired LAN

Check	Remedy
Is the network cable connected correctly?	Check that the network cable is securely connected.
Are the computer's LAN card and the built-in LAN function available?	Check that LAN is valid by checking the device manager under <b>Control Panel - System - Hardware</b> .
Is the DHCP function for Wired LAN turned On?	Turn off the <b>DHCP</b> setting for <b>Wired LAN</b> from the Configuration Menu. When DHCP is set to <b>ON</b> in Advanced Connection Mode, if an available DHCP server is not found, it may take a while to enter LAN standby status. See your projector <i>User's Guide</i> for details on the projector's wired LAN settings.
Are connection denial functions, such as MAC Address restrictions and port restrictions, set correctly at the access point?	Set the projector to allow connections from the access point.
Are the IP address, the subnet mask, and the gateway address for the access point and the projector set correctly?	When not using a DHCP, adjust each setting.

## Cannot connect the projector and the computer via the network

Check	Remedy
Is the Network Configuration screen displayed on the projector?	Close network settings on the projector, and return to the LAN standby screen. If the Network Configuration screen is displayed on the projector, you cannot connect using EasyMP Multi PC Projection.
Is the firewall turned off, or has the firewall been registered as an exception?	When you do not wish to turn off the firewall or register the firewall as an exception, make the necessary settings to open the ports. The ports used by EasyMP Multi PC Projection are "3620", "3621", and "3629".
Was the network adapter being used selected correctly with EasyMP Multi PC Projection?	If the computer has multiple LAN environments, it cannot connect unless the network adapter is selected correctly. When using a computer running Windows, start EasyMP Multi PC Projection, and select the network adapter you are using from <b>Switch LAN</b> in <b>Set options</b> .  "General Settings Tab" <a href="#">p.43</a>

Check	Remedy
Are the access point and the projector's subnet different?	Select <b>Manual search</b> from EasyMP Multi PC Projection, and then specify the IP address to connect. ☛ "Manual search" <a href="#">p.18</a>
Does the projector support the EasyMP Multi PC Projection version being used?	Install EasyMP Multi PC Projection from the EPSON Projector Software for Meeting & Presentation CD-ROM supplied with the projector.
Do you have the latest version of EasyMP Multi PC Projection?	<p>Only 16 computers can be connected under either of the following conditions.</p> <ul style="list-style-type: none"> <li>• When any of the computers is running an older version (Ver. 1.05 or older) of EasyMP Multi PC Projection. Install the latest version of EasyMP Multi PC Projection on all computers when connecting 17 to 32 computers.</li> </ul> <p>You can check the EasyMP Multi PC Projection version from Set options.</p> <p>☛ "Adjust Performance Tab" <a href="#">p.44</a></p> <ul style="list-style-type: none"> <li>• When any of the connected projectors can only connect up to 16 computers.</li> </ul>

## Cannot select the projector

Check	Remedy
Are you trying to combine a set of projectors that differs from a combination created by a user who is already connected?	When another user is already connected, you can only connect to the projectors in the combination selected by the other user. Select a projector from the same combination as the user who is already connected, or select a projector that is in standby status.

## The Screen is not Projected

**The movie image and audio are not displayed, the image is slow to appear, or either the video or audio stop when projecting using EasyMP Multi PC Projection**

Check	Remedy
Did you try to play back movies with Media Player or try to operate the screen saver preview?	Depending on the computer, the movie playback screen in Media Player may not be displayed, and the screen saver preview may not be displayed normally.
Is WEP encryption enabled?	When WEP encryption is enabled, display speed decreases.
Have you enabled DHCP?	When DHCP is set to <b>On</b> in Advanced connection mode or wired LAN connection, if an available DHCP server is not found, it may take a while to enter LAN standby status.
Was EasyMP Multi PC Projection started while a movie was playing, or were the resolution and color number changed? (For Mac OS)	When playing back movies, start EasyMP Multi PC Projection first before starting play back. If EasyMP Multi PC Projection is started during movie play back and the display screen resolution and color numbers are changed, try moving the movie playback window, minimizing it, or resizing it and so on.
Are you using a computer that does not meet the software requirements?	When using a computer that does not meet the software requirements, images and audio for movies may stop. ☛ "Software Requirements" <a href="#">p.6</a>
Is <b>Make the movement of the mouse pointer smooth</b> selected?	Do one of the following to stop the mouse pointer from flickering on the screen. • Select <b>Make the movement of the mouse pointer smooth</b> .
Is <b>Transfer layered window</b> selected?	☛ "General Settings Tab" <a href="#">p.43</a> • Clear <b>Transfer layered window</b> . ☛ "Adjust Performance Tab" <a href="#">p.44</a>

## No audio from the projector when connecting with EasyMP Multi PC Projection

Check	Remedy
Are multiple projectors connected to one computer?	Audio can only be transferred to one projector. Cut the current connection, and then select one projector from the search screen.
Are you projecting a divided screen from multiple computers?	You can only output the computer's audio from the projector when projecting one computer's screen at full screen. Only project one screen. ☛ "Changing the Number of Projected Screens" <a href="#">p.23</a>
Is audio set to output from the computer in Set options?	Select <b>Output audio from the projector</b> on the <b>Audio Output</b> tab in Set options. ☛ "Audio Output Tab" <a href="#">p.45</a>

## When a connection is made using EasyMP Multi PC Projection, a PowerPoint Slide Show cannot be started.

Check	Remedy
Was EasyMP Multi PC Projection started while PowerPoint was running? (For Windows)	When connecting with EasyMP Multi PC Projection, make sure you close PowerPoint first. Slide Show might not run if connecting while PowerPoint is running.

## When a connection has been made using EasyMP Multi PC Projection, the screen will not be refreshed when using an Office application.


Check	Remedy
Is the mouse moved continuously?	When you stop moving the mouse cursor, the screen is updated. If the screen does not update quickly, stop moving the mouse cursor.

## Error Messages when Starting up EasyMP Multi PC Projection

Error Messages	Remedy
This application is already running.	Two instances of EasyMP Multi PC Projection have been started.
Cannot start this application because other EPSON Projector software (Quick Wireless Connection) is already running.	Close the other projector software and then start EasyMP Multi PC Projection.
Cannot start this application because other EPSON Projector software (USB Display) is already running.	
Cannot start this application because other EPSON Projector software (EasyMP Network Projection) is already running.	
EasyMP Multi PC Projection initialization failed.	Restart EasyMP Multi PC Projection. If the message still appears, uninstall and then reinstall EasyMP Multi PC Projection. <ul style="list-style-type: none"> <li>☛ "Uninstalling the Software" <a href="#">p.46</a></li> <li>☛ "Installing the Software" <a href="#">p.6</a></li> </ul>
Cannot open the shortcut file.	The shortcut file may be corrupted. Start EasyMP Multi PC Projection, and then try searching for and connecting to the projectors again. <ul style="list-style-type: none"> <li>☛ "Starting EasyMP Multi PC Projection" <a href="#">p.15</a></li> <li>☛ "Searching for and Connecting to the Projectors" <a href="#">p.17</a></li> </ul>
Files are missing or invalid. Failed to start the application. Reinstall/remove the application.	Uninstall and then reinstall EasyMP Multi PC Projection. <ul style="list-style-type: none"> <li>☛ "Uninstalling the Software" <a href="#">p.46</a></li> <li>☛ "Installing the Software" <a href="#">p.6</a></li> </ul>
Network adapter information could not be obtained.	Use a computer that can connect to LAN.
Cannot start from the shortcut while projecting.	Because the projector is already projecting using EasyMP Multi PC Projection, you cannot start from the shortcut. Stop projecting and then start from the shortcut.

Error Messages	Remedy
Cannot start from the shortcut while the Option screen is displayed. Close the Option screen, and then try opening the shortcut again.	The Option screen is displayed. Close the Option screen.
The slide show may will not begin until PowerPoint is restarted.	Close PowerPoint, and then start again.

## Error Messages when Searching for and Selecting Projectors

Error Messages	Remedy
Cannot join. The maximum number of participants has been exceeded.	32 computers are already connected to the projector. Disconnect users and projectors that are not projecting screens.  <a href="#">"Ending the Meeting" p.25</a>
The keyword does not match. Re-enter the keyword displayed on the projector screen.	Check the Projector Keyword displayed on the LAN standby screen, and enter the Projector Keyword. If a user is already connected, check the Projector Keyword with the connected user.
Connection failed due to keyword mismatch.	Reconnect to the projector. Enter the Projector Keyword on the keyword entry screen displayed when you connect. Check the Projector Keyword that is displayed on the projector's LAN standby screen. If a user is already connected, check the Projector Keyword with the connected user.
Updating display configuration. Please try again in a few minutes. Select another projector.	When another user is already connected, you can only connect to the projectors in the combination selected by the other user. Select a projector from the same combination as the user who is already connected, or select a projector that is in standby status.
One or more projectors are not responding.	You cannot connect to multiple projectors simultaneously. Check the network settings on the computer and the network settings on the projector.
A network error occurred.	Try connecting again. If it still does not connect, check the network settings on the computer and the network settings for the projector.
Connection to the projector failed.	Cannot connect to a projector that is already connected using EasyMP Network Projection. Check if the projector you want to connect to is already connected to EasyMP Network Projection.

## Error Messages when Projecting

Error Messages	Remedy
The projector has disconnected.	An error may have occurred in the projector. Check the projector's indicators. See your projector <i>User's Guide</i> for details.
A network error occurred.	A network error occurred. Check the connection between the computer and the projector.

## Error Message when Operating a Profile

Error Messages	Remedy
Enter max. 32 characters.	The entered text exceeds 32 characters. Shorten the name to 32 characters or less.
Enter a folder name.	No folder name entered. Enter a folder name.
Folders should not be created more than 6 layers deep.	The folder structure is deeper than six folders. Create the new folder higher up in the folder structure.
There is already a folder named XXX in this folder.	A folder with the same name already exists. Enter another name.
There is already a projector file named XXX in this folder.	A projector with the same name already exists. Enter another name.
Cannot import. Format not supported by this application.	Check the profile you want to import. You cannot import a profile for projectors connected using Quick connection mode in EasyMP Network Projection. Also, you cannot import when projector information has not been registered, or when the profile is corrupt.
Cannot import because the folder structure exceeds six folders.	If you import, the folder structure will exceed six layers. Import to a folder higher up in the folder structure.
Cannot move because the folder structure exceeds six folders.	If the folder is moved, the folder structure will exceed six folders. Import to a folder higher up in the folder structure.



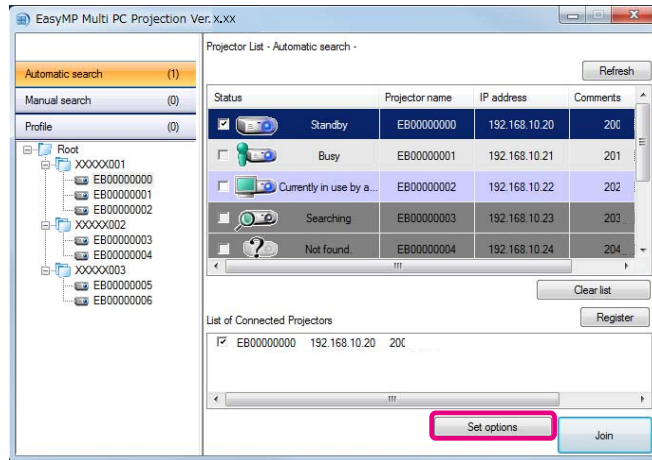


# Appendix

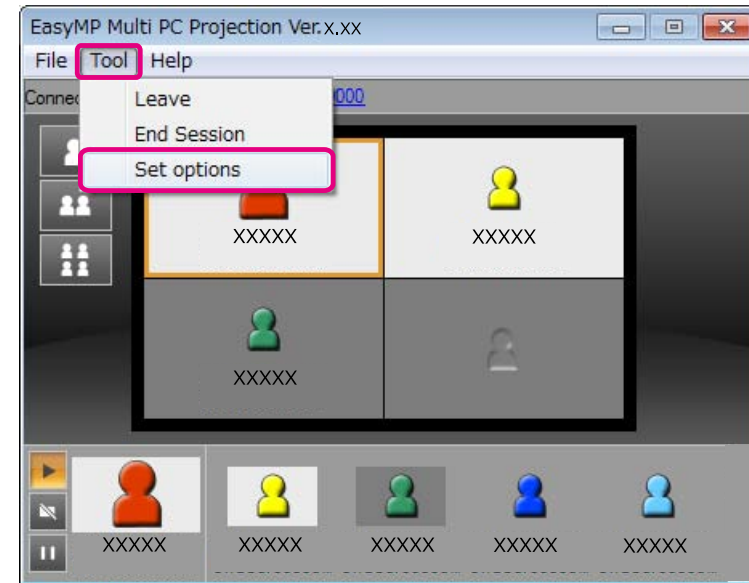
## Set Options

You can display the Set options screen by using one of the following methods.

- Click **Set options** on the search screen.

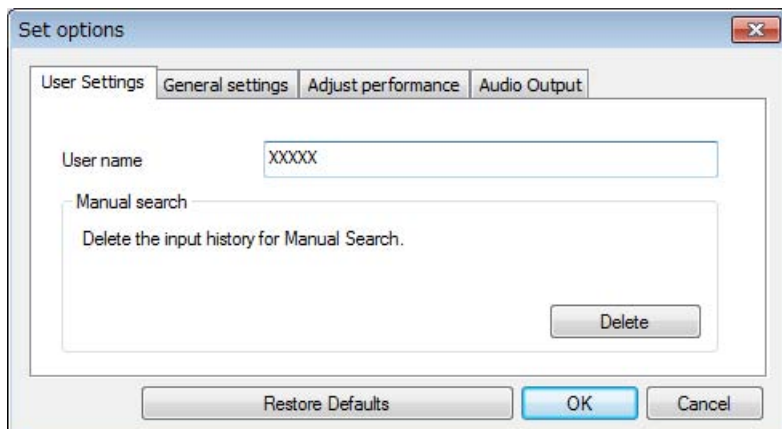


- Select **Set options** from the **Tool** menu on the projection control screen.



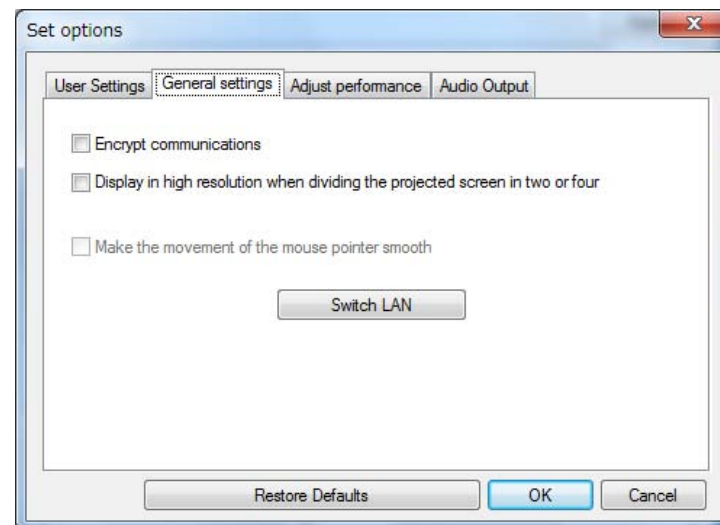
If you display the Set options screen from the projection control screen, neither the **User Settings** tab or the **General settings** tab are displayed.

## User Settings Tab



<b>User name</b>	Set the user name displayed in the user's area. You can enter up to 32 characters.
<b>Manual search</b>	Delete the input history for Manual search.
<b>Restore Defaults</b>	You can reset all adjustment values for <b>Set options</b> to their default settings. However, you can retain the setting for <b>Switch LAN</b> in <b>General settings</b> .

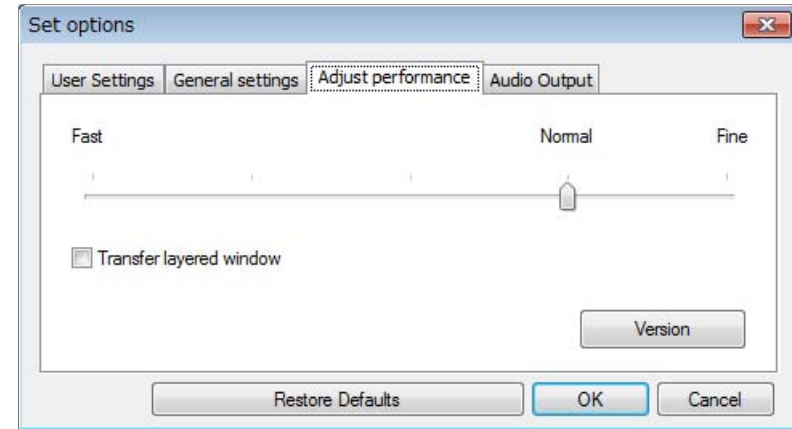
## General Settings Tab



<b>Encrypt communications</b>	Select to encrypt and transmit data. Even if data is intercepted, it cannot be decrypted.
<b>Display in high resolution when dividing the projected screen in two or four</b>	Select to display all divided screens in high resolution. Clear this setting if displaying the image takes too long or is interrupted. (Only available for projectors with a resolution of WUXGA (1920 x 1200).)
<b>Make the movement of the mouse pointer smooth</b>	Windows only Select to prevent the mouse pointer from flickering when <b>Transfer layered window</b> is selected in <b>Adjust performance</b> . (When Windows Aero is selected as the theme in Windows Vista/7, Windows Aero turns off by selecting this setting.)

<p><b>Switch LAN</b></p>	<p>Windows only</p> <p>This is used to switch the network adapter to be used for a search when a computer has multiple adapters.</p> <p>By default, all of the network adapters are used to perform a search. When a wired LAN is always used as the connection method, select a wired LAN adapter.</p>
<p><b>Restore Defaults</b></p>	<p>You can reset all adjustment values for <b>Set options</b> to their default settings. However, you can retain the setting for <b>Switch LAN</b> in <b>General settings</b>.</p>

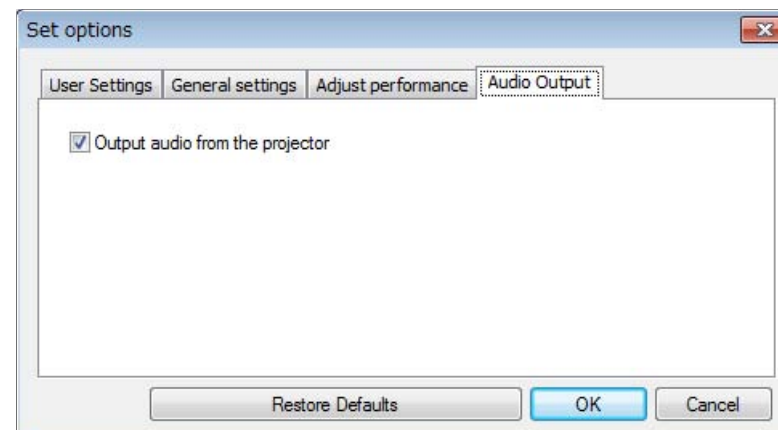
## Adjust Performance Tab



<p><b>Performance adjustment slider</b></p>	<p>The performance can be set to <b>Fast</b>, <b>Normal</b>, and <b>Fine</b>.</p> <p>Set to <b>Fast</b> when movie projections are interrupted.</p>
<p><b>Lower the resolution and transfer</b></p>	<p>Only available for projectors with a resolution of WUXGA (1920 x 1200).</p> <p>Select to reduce the size of the data to be transferred to the projector by lowering the resolution. Use this option on a slow network or when displaying the image takes too long or is interrupted. (This is not available when dividing the projected screen in two or four.)</p>

<p><b>Transfer layered window</b></p>	<p>Windows XP only</p> <p>The layered window is in use when contents such as messages displayed on the computer are not projected by the projector. Select this check box to project contents such as messages that use the layered window.</p> <p>Clear this check box if you do not want the mouse pointer to flicker on the screen.</p>
<p><b>Version</b></p>	<p>Displays EasyMP Multi PC Projection version information.</p>
<p><b>Restore Defaults</b></p>	<p>You can reset all adjustment values for <b>Set options</b> to their default settings. However, you can retain the setting for <b>Switch LAN</b> in <b>General settings</b>.</p>

## Audio Output Tab



<p><b>Output audio from the projector</b></p>	<p>Select to output the computer's audio from the projector. Clear to output audio from the computer.</p> <p>You can only output the computer's audio from the projector when projecting one computer's screen at full screen.</p>
<p><b>Restore Defaults</b></p>	<p>You can reset all adjustment values for <b>Set options</b> to their default settings. However, you can retain the setting for <b>Switch LAN</b> in <b>General settings</b>.</p>

---

## Uninstalling

Make sure you check the following points before starting uninstallation.

- For Windows, you need administrator authority to uninstall EasyMP Multi PC Projection.
- Close all running applications before starting uninstallation.

### For Windows XP

- 1 **Click Start, and then Control Panel.**
- 2 **Double-click Add/Remove Programs.**
- 3 **Select EasyMP Multi PC Projection, and then click Remove.**

### For Windows Vista/Windows 7

- 1 **Click Start, and then Control Panel.**
- 2 **Click Uninstall a program from Programs.**
- 3 **Select EasyMP Multi PC Projection, and then click Uninstall.**

### For Mac OS X

- 1 **Open the Applications folder.**
- 2 **Open the EasyMP Multi PC Projection - Tools folder, and then double-click EasyMP Multi PC Projection Uninstaller.**
- 3 **Follow the on-screen instructions to uninstall.**

## Notices

---

## Copyright Notice

All rights reserved. No part of this publication may be reproduced, stored in a retrieval system, or transmitted in any form or by any means, electronic, mechanical, photocopying, recording, or otherwise, without the prior written permission of Seiko Epson Corporation. No patent liability is assumed with respect to the use of the information contained herein. Neither is any liability assumed for damages resulting from the use of the information contained herein.

Neither Seiko Epson Corporation nor its affiliates shall be liable to the purchaser of this product or third parties for damages, losses, costs, or expenses incurred by the purchaser or third parties as a result of: accident, misuse, or abuse of this product or unauthorized modifications, repairs, or alterations to this product, or (excluding the U.S.) failure to strictly comply with Seiko Epson Corporation's operating and maintenance instructions.

Seiko Epson Corporation shall not be liable against any damages or problems arising from the use of any options or any consumable products other than those designated as Original Epson Products or Epson Approved Products by Seiko Epson Corporation.

This information is subject to change without notice.

Illustrations in this guide may differ from the actual projector.

---

## Regarding the use of Names

Microsoft® Windows® XP Professional operating system  
Microsoft® Windows® XP Home Edition operating system  
Microsoft® Windows® Vista® operating system  
Microsoft® Windows® 7 operating system

In this guide, the operating systems above are referred to as "Windows XP", "Windows Vista", and "Windows 7". Furthermore, the collective term Windows may be used to refer to Windows XP, Windows Vista, and Windows 7, and multiple versions of Windows may be referred to as, for example, Windows XP/Vista, with the Windows notation omitted.

Mac OS X 10.4.x  
Mac OS X 10.5.x  
Mac OS X 10.6.x  
Mac OS X 10.7.x

In this guide, the operating systems above are referred to as "Mac OS X 10.4.x", "Mac OS X 10.5.x", "Mac OS X 10.6.x", and "Mac OS X 10.7.x". Furthermore, the collective term "Mac OS" is used to refer to them all.

---

## Regarding Screen Shots

Unless specifically stated, screen shots used in this operation guide are taken from Windows 7.

You see the same screens even when using Mac OS.

---

## Trademarks

IBM, DOS/V, and XGA are trademarks or registered trademarks of International Business Machines Corporation.

Macintosh, Mac, Mac OS, and iMac are trademarks of Apple Inc.

Microsoft, Windows, Windows NT, Windows Vista, Windows 7, PowerPoint, and the Windows logo are trademarks or registered trademarks of Microsoft Corporation in the United States.

Other product names used herein are also for identification purposes only and may be trademarks of their respective owners. Epson disclaims any and all rights in those marks.

**Software Copyright:**

This product uses free software as well as software to which this company holds the rights.

© 2012 Epson America, Inc.

2/12

CPD-36313