



PictureMate[®]
personal photo lab



Deluxe
Viewer
Edition

Using PictureMate With a Computer

Installing Software and Connecting PictureMate

To connect PictureMate® Deluxe Viewer Edition, you'll need this cable:



Type A to B
USB cable


If you don't have a USB cable, you can buy one from your local computer dealer or from Epson.® See the inside back cover for details.

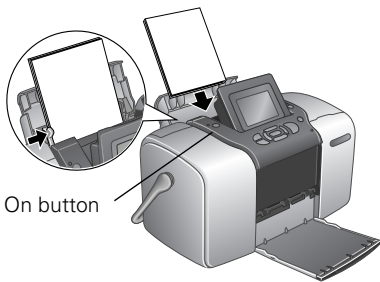
When you're ready to start, see the section for your computer system:

- For Windows,® see below.
- For Macintosh,® see page 9.

Installing PictureMate for Windows

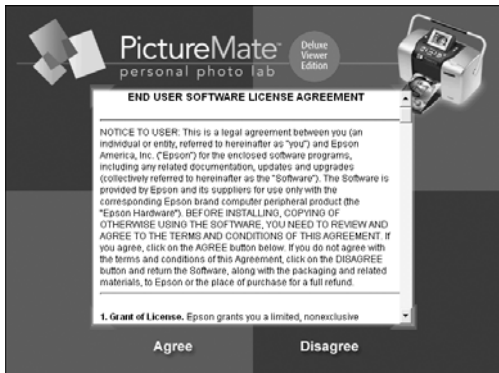
First make sure PictureMate is **NOT CONNECTED** to your computer, and **REMOVE** your memory card, if it's inserted. Then:

1. Load a sheet of PictureMate Photo Paper, glossy side up, against the right edge of the paper feeder. Slide the edge guide against the paper and open the output tray.
2. Press the  On button to turn on PictureMate.
3. Turn on your computer.



4. Wait a minute for your computer to start up, then insert the PictureMate CD in your CD-ROM or DVD drive.

After a moment, you see this screen:



5. Read the license agreement and click Agree.

Note:

If you see a screen like this, remove your memory card from PictureMate and click the **X** in the upper right corner to close the screen, if necessary.

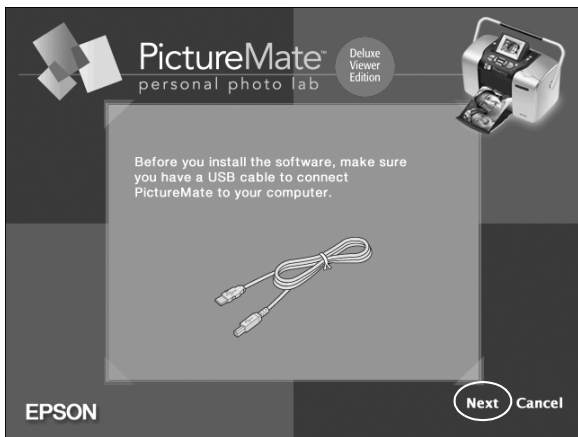
**Note:**

If you see a New Hardware Found message at the bottom of your screen, click the **X** in the box to close it.

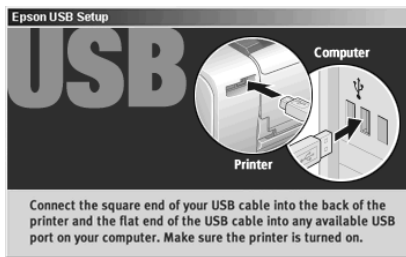
If you see a screen like this, click **Cancel** and disconnect PictureMate from your computer. Then turn off your computer and begin again at step 3.



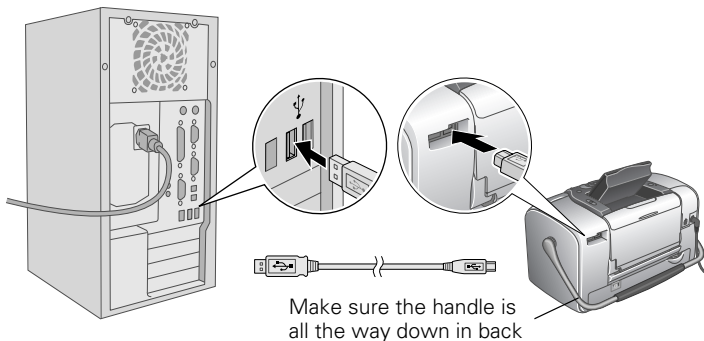
6. When you see this screen, click **Next** to begin installing your software.



After a few minutes, you see this screen:

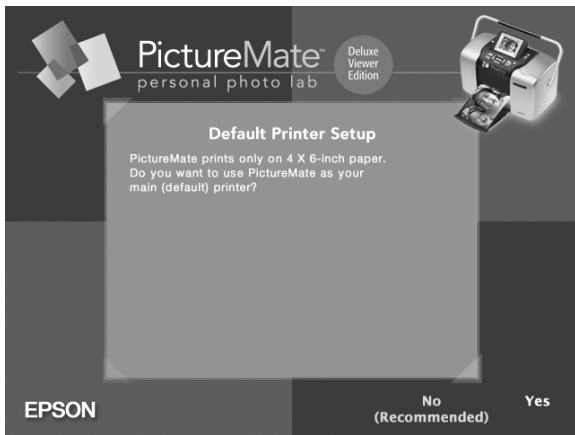


7. Make sure PictureMate is turned on, then connect the square end of your USB cable to the **USB** port on the back of PictureMate. Connect the flat end of the USB cable to any USB port on your computer.



8. If you see a prompt to restart your computer, click **No**.
9. When you see this screen, click **No** if you have another printer for non-photo printing.

If PictureMate is your only printer, and you only print photos, click **Yes**.



If you see a message about printing a test page, click **OK** to print. When printing finishes, click **Next** to install additional software.

Continue with the instructions in the next section.

Installing Additional Software for Windows

1. When you see this screen, you can install additional photo software:



2. Click **Epson Software Film Factory**, then click **Install** on the next screen and follow the on-screen instructions.

Note:

If you are asked if you want to install QuickTime®, click **Yes** and follow the on-screen instructions; you don't need a registration number. Also uncheck the boxes for launching QuickTime and Film Factory™ at the end of their installations.

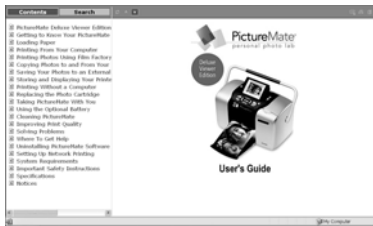
3. Close any open windows to return to the Optional Software installation.
4. Click **Epson PhotoCenter Link**, then click **Add Icon** on the next screen and follow the on-screen instructions.
5. When you're done installing software, click **Exit**. The registration screen appears.
6. Follow the on-screen instructions to register PictureMate.
7. Remove and store your PictureMate CD.
8. Restart your computer.

Note:

If you have any problems installing the PictureMate software, see page 16.

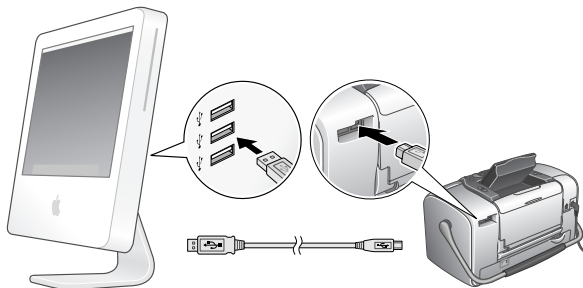
You're ready to print your photos! Insert your memory card or open your photo file on your computer, as described in the on-screen *User's Guide*.


Double-click the **PictureMate Deluxe User's Guide** icon on your screen to open the *User's Guide*.



Installing PictureMate for Macintosh


1. If you inserted a memory card, remove it from PictureMate.
2. Connect the square end of your USB cable to the **USB** port on the back of PictureMate. Then connect the flat end of the USB cable to any open USB port on your Macintosh.

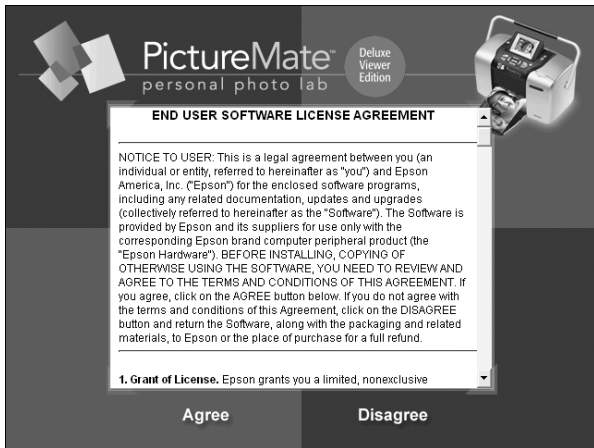


3. Press the  **On** button to turn on PictureMate.
4. Turn on your Macintosh and wait a minute for it to start up.
5. Insert the PictureMate CD in your CD-ROM or DVD drive.

Note:

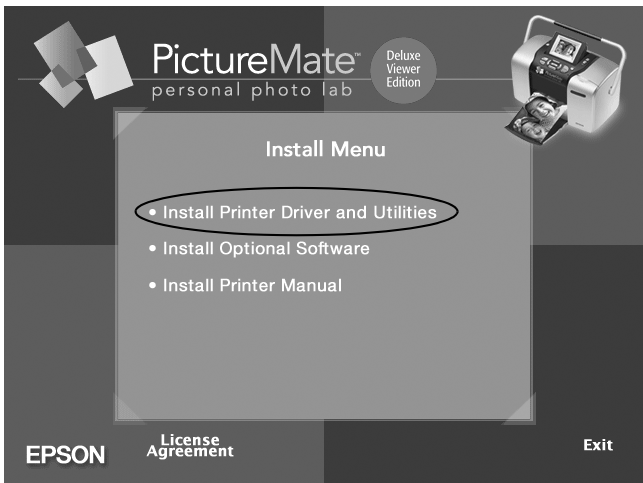
If you have any problems installing the PictureMate software, see page 16.

6. Double-click the **Epson CD** icon to open it, then double-click  **Epson**. After a moment, you see this screen:



7. Read the license agreement and click **Agree**.

You see the Install Menu:



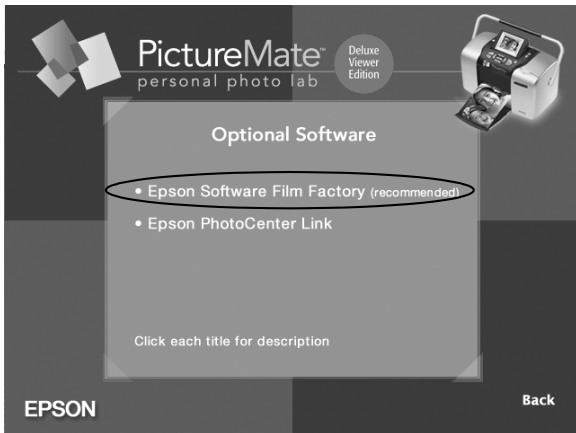
8. Click **Install Printer Driver and Utilities**. Follow the on-screen instructions to install several programs.

You'll need to enter your password, accept license agreements, and click **Quit** several times as you install.

9. Continue with the instructions in the next section to install additional software.

Installing Additional Software for Macintosh

1. When you return to the Install Menu, click Install Optional Software. You see this menu:





2. Click **Epson Software Film Factory**, then click **Install** on the next screen and follow the on-screen instructions.
3. Click **Epson PhotoCenter Link**, then click **Add Icon** on the next screen and follow the on-screen instructions.
4. When you return to the Optional Software menu shown above, click **Back**.

5. At the Install Menu, click **Install Printer Manual** to install your on-screen *User's Guide*.
6. When you're done installing software, click **Exit**. The registration screen appears.
7. Follow the on-screen instructions to register PictureMate.
8. Remove and store your PictureMate CD.

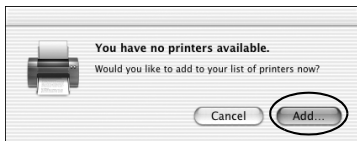
After you finish installing software, you must select PictureMate as your Macintosh printer. Follow the instructions below.

Selecting Your Printer in Mac OS X

1. Open the **Applications** folder, then open the **Utilities** folder and double-click  **Printer Setup Utility** (OS X 10.3.x) or  **Print Center** (OS X 10.2.x).

Note:

If you see this screen, click **Add** and go to step 3.



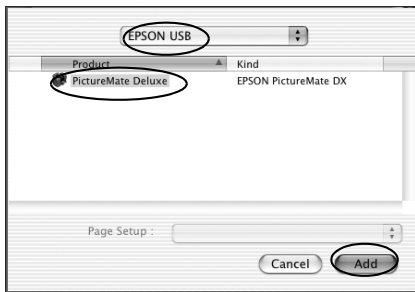
If you see this screen, click **OK** and go to step 3.



2. If **PictureMate Deluxe** appears in the Printer List, click **PictureMate Deluxe** and click **Add**.

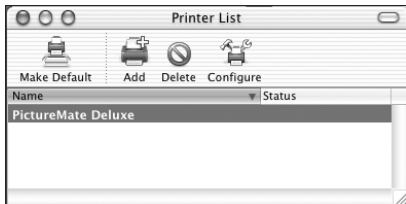
If it doesn't appear, make sure **PictureMate** is turned on and connected to your Macintosh, then click **Add**. You see a new screen:

3. If it isn't already selected at the top of the screen, choose **EPSON USB**.
4. Click **PictureMate Deluxe**, then click the **Add** button.



You see the Printer List with **PictureMate Deluxe** added:

5. Close the Printer Setup Utility or Print Center.
6. Remove and store your **PictureMate CD**.



You're ready to print your photos! Insert your memory card or open your photo file on your computer, as described in the on-screen *User's Guide*.

Double-click the PictureMate Deluxe User's Guide icon on your screen to open the *User's Guide*.



Help With Software Installation Problems

If you have problems installing the software, try these suggestions:

- Carefully follow the instructions on the *Start Here* sheet and in this booklet. Don't connect PictureMate to the computer until you are instructed to. Then connect the USB cable securely at both ends.
- Close your other programs, including any screen savers and virus protection software, and install the PictureMate software again.
- If you're installing the software for Windows, make sure Windows 98, Me, 2000, or XP was preinstalled on your system. The USB Printer Device Driver may not install correctly if you've upgraded from Windows 95.
- In Mac OS X, if you don't see **PictureMate Deluxe** in the Format for menu under Page Setup, you may need to set up PictureMate in the Printer Setup Utility or Print Center. See page 13 for instructions.
- If you're printing over a network, see your on-screen *User's Guide*.

Epson and PictureMate are registered trademarks of Seiko Epson Corporation.

Epson Store and Epson PhotoCenter are service marks and Epson Software is a trademark of Epson America, Inc.

General Notice: Other product names used herein are for identification purposes only and may be trademarks of their respective owners. Epson disclaims any and all rights in those marks.

Follow These Easy Steps

To use PictureMate® with your computer, you'll need to:



Install the software on your computer from the PictureMate CD.

Follow the steps in this booklet.

Connect PictureMate to your computer.



The steps here tell you how and when to connect.



View the on-screen *User's Guide*.

Click PictureMate Deluxe User's Guide right on your computer screen for steps on using PictureMate with your computer. It's your comprehensive guide to PictureMate.

Where To Get Help

If you need additional help with PictureMate, see “Where To Get Help” in the *Using PictureMate Without a Computer* book.

PictureMate Accessories



You can purchase a PictureMate Print Pack (with PictureMate Photo Paper and a PictureMate Photo Cartridge), a USB cable, the PictureMate rechargeable battery, a PictureMate carrying case, and other PictureMate accessories. Visit your local retailer or go to the Epson StoreSM at www.epsonstore.com (U.S. sales only). In Canada, please call (800) 463-7766 for dealer referral.

For PictureMate information, special offers, and related accessories, visit www.MyPictureMate.com