

 **EPSON**
SOFTWARE™

Getting Started

*Organize, beautify, and print
your photos in a flash*



Copyright Notice

All rights reserved. No part of this publication may be reproduced, stored in a retrieval system, or transmitted in any form or by any means, electronic, mechanical, photocopying, recording, or otherwise, without the prior written permission of Epson America, Inc.

Trademarks

EPSON and EPSON Stylus are registered trademarks and PRINT Image Matching and the PRINT Image Matching logo are trademarks of SEIKO EPSON CORPORATION.

EPSON Software and the EPSON Software logo are trademarks, and EPSON PhotoCenter is a service mark of Epson America, Inc.

Film Factory and the Film Factory logo are trademarks of A.I.Soft, Inc.

General notice: Other product names used herein are for identification purposes only and may be trademarks of their respective owners. EPSON disclaims any and all rights in those marks.

Copyright © 1999–2002 by Epson America, Inc., and 1998–2002 A.I.Soft, Inc., for its contributions.

PRINT Image Matching II, Copyright Seiko Epson Corporation 2002. All Rights Reserved.

Contents

Introducing Film Factory	5
About PRINT Image Matching.	6
About Exif Print	6
Learning More About Film Factory	7
Windows System Requirements.	7
Macintosh System Requirements	8
Compatible Devices and File Formats	8
Starting Film Factory	9
Film Factory's Main Screen	9
How Film Factory Organizes Your Photos.	12
Creating a Roll of Film.	12
Adding Photos to a Roll.	15
Retouching Your Photos	18
Automatically Retouching a Photo	19
Manually Retouching a Photo	20
Rotating an Image	21
Cropping an Image	22
Changing Color to Black and White or Sepia	23
Applying a Soft Focus Effect	24
Correcting Red Eye	25
Canceling Retouch Changes	26
Adding Comments or Sound to a Photo.	27
Adding Text	27
Adding Sound (Windows Only)	28
Managing Your Photos, Film Rolls, and Film Cases.	29
Using the Viewer to Display Photos	29
Moving or Copying a Photo to Another Roll.	30
Deleting a Photo From a Roll	31
Finding a Photo.	31
Sorting Photos and Film Rolls.	32
Renaming a Roll	32
Moving a Roll	32

Deleting a Roll	33
Working With Film Cases	34
Managing Photos on Removable Media and Networks	36
Printing Your Photos	37
Standard Prints	38
Index Prints	40
Duplicate Prints	42
Album Pages	44
Greeting Cards	47
Sticker Prints	51
Combo Prints	53
Other Film Factory Features.	55
Creating a Collage	55
Creating a Photo Slide Show	56
Playing a Movie File	56
Creating Web Pages of Your Photos	56
Uploading Photos	57
Converting a Photo to Desktop Wallpaper	58
Using a Photo Roll as a Screen Saver	58
Exporting Photos to Files or E-mail	59
Where to Get Help.	60

Introducing Film Factory

EPSON Software™ Film Factory™ lets you process your digital “film” and print snapshots using your own computer and printer. With this powerful photo management utility, you can import images from any digital-imaging source and create virtual rolls of film and film cases to organize thousands of photos in a visual format.

Film Factory is the perfect photo management program for the home or office. If you're a home computer user, you'll have fun organizing, enhancing, printing, and sharing your favorite photos with family and friends. If you're a small business user, Film Factory provides an efficient and convenient way to catalog your business-related digital photos.

Film Factory lets you:


- Quickly and easily import and organize images from a digital camera, scanner, PC card, CD-ROM, or disk.
- Retouch your pictures to make them look their best. Automatically adjust color balance, brightness, and contrast. Rotate or trim the image, or correct red eyes. Convert photos to black and white or sepia for a classic look. Most enhancements can be made without modifying the original image file.
- Organize and retrieve all your photos with virtual “rolls of film” and “film cases.” You can catalog your photos by subject, or family members can have their own film cases with their own rolls.
- Print vivid color images in a variety of formats, including standard 3.5×5 or 4×6 prints, an index (contact) sheet, photo album pages, and greeting cards.
- Add comments or sound (Windows® only) to each photo to be stored with it.
- Create photo collages.
- E-mail your photos to family, friends, and business associates using your own e-mail program, or create web pages of your photos in one easy step (Windows only).
- Use your photos as desktop wallpaper or a screen saver (Windows only).

About **PRINT** Image Matching

If your digital camera and printer support PRINT Image Matching (P.I.M.), Film Factory lets you produce the best prints possible (not available on Macintosh® OS X). PRINT Image Matching is a term for the print command that is embedded in the header of the image file created by certain digital cameras. It contains color setting and image parameter information. With PRINT Image Matching, the digital camera can set specific printing options such as:

- | | | |
|---------------|---------------|--------------------|
| ■ contrast | ■ sharpness | ■ brightness |
| ■ gamma level | ■ color space | ■ color saturation |
| ■ shadow | ■ highlight | ■ color balance |

The camera saves this information in each image file. For example, macro mode pictures might include commands for sharpness and clarity, while portrait mode pictures might emphasize soft focusing and subtle flesh tones. Your printer then uses the information to ensure the most accurate reproduction of the image.

In Film Factory, the  P.I.M. symbol appears on the thumbnails for PRINT Image Matching photos. You can also right-click (Windows) or Ctrl-click (Macintosh) a photo thumbnail to see if it is a P.I.M. photo. Check the Photo Enhancement status in the displayed information; if it is **PRINT Image Matching** or **PRINT Image Matching with the ability to interpret Exif Print**, the photo contains P.I.M. data.

If a PRINT Image Matching photo has been retouched, it may not display the P.I.M. symbol or P.I.M. status. If you trim or rotate a PRINT Image Matching photo, or correct for red eyes, the P.I.M. settings are retained. But because P.I.M. optimizes settings such as brightness and color automatically, using retouching options like these removes P.I.M. settings. You also lose P.I.M. settings if you export the files.

About **Exif Print**

The Exif (Exchangeable Image File) Print format includes information about your digital camera settings in JPEG files so your printer and application can use them to create accurate print settings. Most digital cameras store Exif Print information such as shutter speed, metering, flash and exposure settings, resolution, and lens use in the JPEG image file.

In Film Factory, Exif Print or PRINT Image Matching with ability to interpret Exif Print is listed in an information display box as the Photo Enhancement status when you right-click (Windows) or Ctrl-click (Macintosh) an Exif Print photo. Like P.I.M. photos, you can trim, rotate, or correct for red eyes and still retain Exif Print settings, but if you adjust brightness or color options, or export the files, the Exif Print settings are removed.

Learning More About Film Factory

- This *Getting Started* guide explains how to use Film Factory's exciting features.
- Click the Film Factory Help button for step-by-step instructions on the most frequently used features and convenient access to detailed information.
- If you need additional EPSON® Support, see [“Where to Get Help” on page 60](#).

Windows System Requirements

If you're using Windows, make sure your system configuration meets these minimum requirements:

- Windows 95, 98, Me, XP, 2000, or NT 4.0



If you're using Windows XP, 2000, or NT 4.0, you may need to have Administrator privileges to install and use Film Factory.

- Pentium® 200 (or equivalent) processor or higher
- 64MB of RAM (more will improve performance)
- 100MB of available hard disk space, not including photo storage
- SVGA monitor with 16-bit (High Color) display adapter or better
- QuickTime® 4 or higher to support some file types
- Mouse or other pointing device
- Compatible with most color printers; a high-quality photo printer and special media are recommended to print the best images
- A PRINT Image Matching- or Exif Print-enabled digital camera and printer are required to print with P.I.M. or Exif Print technology

Macintosh System Requirements

If you're using a Macintosh, make sure your system configuration meets these minimum requirements:

- Mac OS 8.5.1 through 9.x for Film Factory for Mac OS 8/9
Mac OS X 10.1 or higher for Film Factory for Mac OS X
- 233 MHz G3 processor or higher
- 64MB of RAM (more will improve performance)
- 100MB of available hard disk space, not including photo storage
- 800 × 600 display resolution with Color Depth set to “thousands of colors”
- QuickTime 4 or higher
- HTML browser (such as Microsoft® Internet Explorer or Netscape® Navigator® version 4.0 or higher) to view online help
- Mouse or other pointing device
- Compatible with most color printers; a high-quality photo printer and special media are recommended to print the best images
- A PRINT Image Matching- or Exif Print-enabled digital camera and printer are required to print with P.I.M. or Exif Print technology

Compatible Devices and File Formats

Film Factory supports files from all TWAIN-compatible digital cameras and scanners (not available with Macintosh OS X). For non-TWAIN devices, you can download photos using your camera or scanner software.

Film Factory supports the following digital photo file types:

- Windows: Supports BMP and JPEG file types. If QuickTime 4 or higher is installed, also supports TIF, PCX, FPX, Photo CD (read only), MacPaint®, PNG, GIF, PICT, Adobe® Photoshop®, QuickTime, SGI, and Targa files.
- Macintosh: Supports JPEG, PICT, BMP, TIF, FPX (read only), PNG, GIF (read only), MacPaint, PhotoShop, QuickTime, SGI, and Targa files.

If QuickTime 4 or higher is installed, Film Factory supports the following digital movie formats: QuickTime, DV, MPEG1, and AVI files.

Starting Film Factory

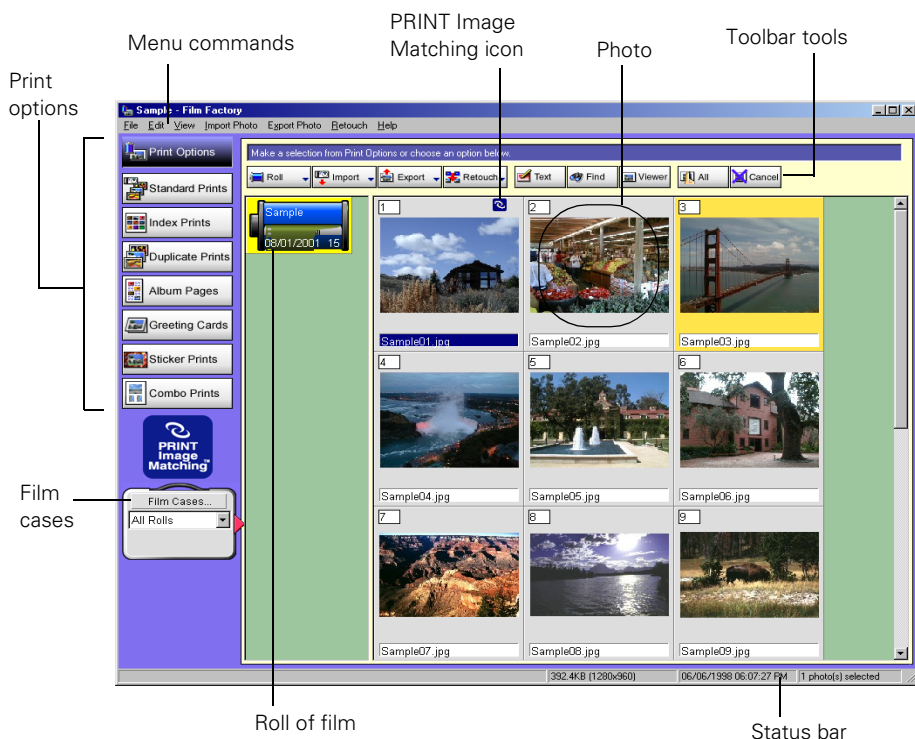
To start Film Factory in Windows, click the **Start** button and select **Programs** or **All Programs**. Then select **Film Factory > Film Factory**.

To start Film Factory on a Macintosh, open the **Film Factory** folder and double-click **Film Factory** or **Film Factory OS X** to open the program.

You see the main screen.

Film Factory's Main Screen

The main screen displays thumbnail views of the photos in the open roll. (The Sample roll included with Film Factory is shown below.)



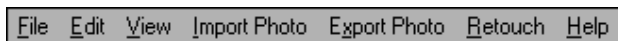
Toolbar

Click on any tool to perform its function. Hold the mouse cursor briefly over any tool to see what function it performs.



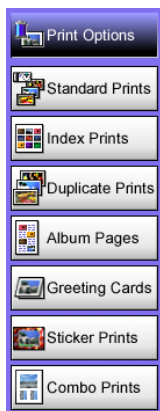
Menu commands

The menu commands provide another way to access many of the toolbar functions, as well as some additional features. Open any menu to select a command. The Status Bar describes the command.



Print options

Click on one of the Print options to select how you want to print your photo(s).



Film cases

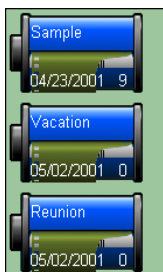
Create separate film cases to catalog your rolls by subject.

Select a film case by choosing it from this list. Only the rolls in that case are displayed.



Film rolls

Add photos to your rolls and view them by simply clicking on a roll. The current roll is highlighted by a yellow background.



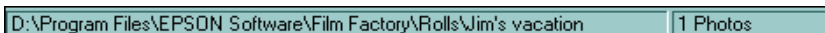
Scroll bars

Use the scroll bars or click on the arrows to see more rolls and more photos.




Status bar

The status bar describes the selected menu command and displays information about your photos.



Photos

Click on any photo to select it. Selected photos are highlighted by a yellow background.

PRINT Image Matching photos have an  icon in the upper-right corner. (PRINT Image Matching features are not available on OS X.)

Display information about photos by right-clicking (Windows) or **Ctrl**-clicking (Macintosh) the photo thumbnail. The P.I.M. or Exif Print status of the photo is listed under **Photo Enhancement**.

Select photos individually, or select a group of photos using **Shift** + click or **Ctrl** + click (Windows), or **Shift** + click or **⌘** + click (Macintosh).



Click **All** or **Cancel** to select or deselect all the photos in a roll.

Double-click on a photo to display an enlarged view of it. (You can also use the Viewer option to enlarge a photo. See [“Using the Viewer to Display Photos” on page 29.](#))

How Film Factory Organizes Your Photos

Film Factory helps you organize photos already stored on your computer as well as those you add from other sources—your digital camera, scanner, or removable media such as a PC card, Zip® disk, or CD-ROM.

First you create a film roll, to which you add your photos. You can store as many photos as you want in each roll. When you have a number of rolls, you can file them in virtual film cases; group rolls of film by subject to make it easier to manage your photos.

Additionally, large photo files don't have to take up space on your hard drive. You can keep them on your Zip disk, CD-ROM, or other removable media while adding virtual thumbnail images of them to a roll created on your hard disk. For example, if you have your photos developed and returned to you on a CD-ROM, you can create a roll without storing the actual photos on your hard drive.

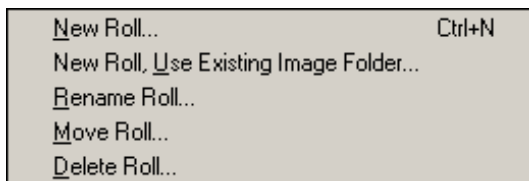
Likewise, if you have images stored on a network, you can view thumbnail versions of the photos (along with any comments) even when the network is offline.

For more information, see [“Managing Your Photos, Film Rolls, and Film Cases” on page 29](#).

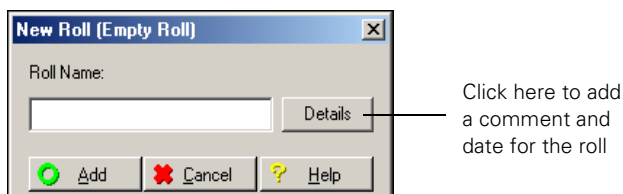
Creating a Roll of Film

Follow the instructions in this section to create a new roll of film and add photos to it—from a disk or from a device such as a digital camera. You can also create a new roll by copying images from an existing folder on your hard disk or other device.

1. From the Main Menu, click the **Roll** button. You see this menu:



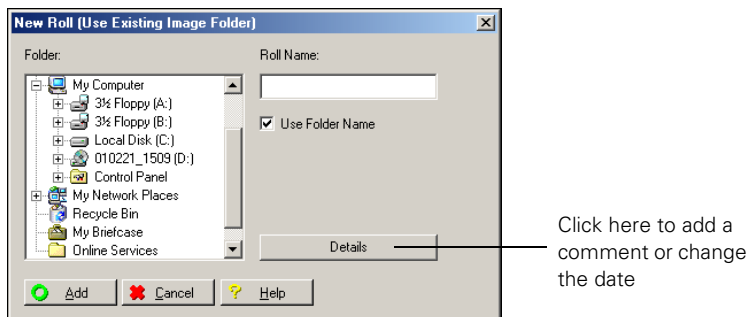
2. To create a new roll to which you can add photos later, click **New Roll**. You see this dialog box:



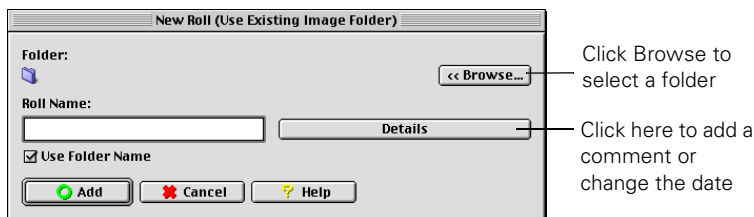
Type a name for the roll. If you want to add a comment and/or date to describe the roll, click the **Details** button and enter the comment and date.

To create a roll from an existing folder of images, click **New Roll, Use Existing Image Folder**. You see this dialog box:

Windows



Macintosh



Select the drive and/or folder where the photos are stored. (On the Macintosh, click **Browse**, then select a folder and click **Choose**.)



If the photos are not copied to your hard drive; only thumbnail images are created for the roll.



If you want to enter a name for the roll that is different from the folder name, type it in the Roll Name box.

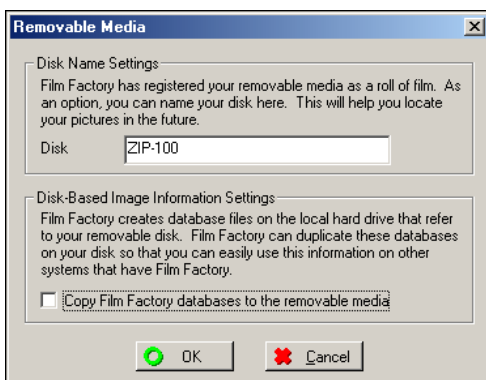
If you want to add a comment and/or date to describe the roll, click the **Details** button and enter the comment and date.

3. Click **Add**. The roll appears on the main screen.

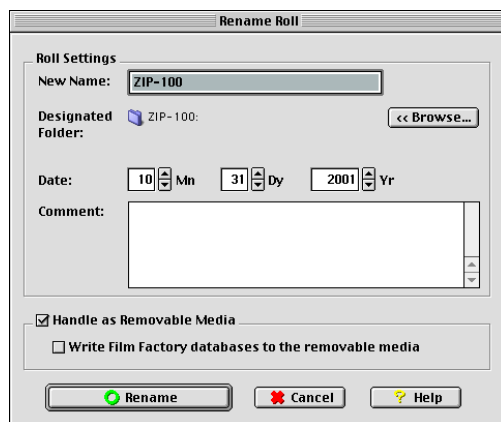
If the folder is on a removable device such as a Zip disk or PC card, you see this window:

If you can record on the device, you can copy the Film Factory databases to the device. Check the **Copy Film Factory databases to the removable media** checkbox (Windows) or the **Write Film Factory databases to the removable media** checkbox (Macintosh) to record the film case, film roll, and any other photo information on the removable device.

Windows




Macintosh



With Macintosh OS X, it's best to copy your photos to a folder on your hard disk and manage your film rolls from there.



If you create a roll from a folder on a removable device, this icon  appears in the upper right corner of the roll.

Now you are ready to add photos to the roll.

Adding Photos to a Roll

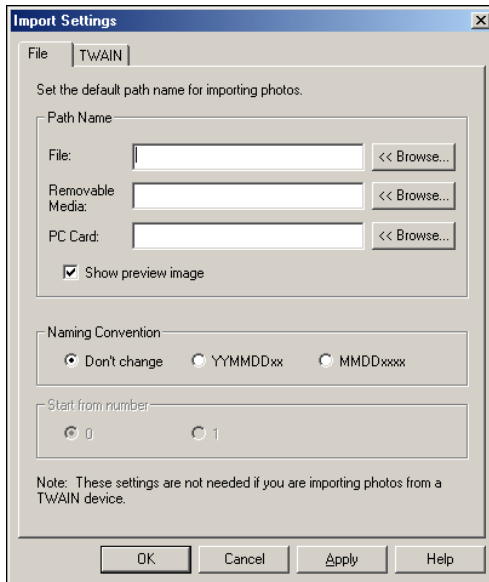
To add photos to a roll, you select images already stored on a disk or from other sources such as a digital camera or scanner. First, make sure the import settings are correct. Then see the appropriate section below:

- “Adding photos from a folder on the hard drive” on page 16.
- “Adding photos from a TWAIN device” on page 17.
- “Adding photos from removable media or a PC card” on page 17.

Selecting the Import Settings

Follow the steps below to define the import source for your image files, whether they are on your hard disk, digital camera, scanner, PC card, or other removable device. You need to do this only once.

1. Click the **Import** button, and choose **Import Settings**. You see this window:



2. On the **File** tab, click **Browse** and select the path name where your image files are stored—on your hard disk, removable media, and/or PC card. This becomes the default path where Film Factory will look for files when you import them, but you can always specify a different location.

On the TWAIN tab, select the digital camera or scanner you are using from the Import Source List and the file format (BMP, PICT, or JPEG). Then click OK. (TWAIN importing is not available on Macintosh OS X.)



For more information about Import Settings, click the **Help** button.

Adding photos from a folder on the hard drive

Follow these steps to import photos from another folder:

1. From the Main Menu, select the film roll to which you want to add photos.

If the film roll you want is in another film case, click the down arrow on the **Film Cases** icon to display the other film cases.



Click here to see other film cases

2. Click the **Import** button, then select **From File** from the drop-down menu. In Windows, you see the Import Files window; on a Macintosh, you see the Choose a File window.
3. Navigate to the disk and directory where the photos are stored.
4. Click the filename you wish to add. A thumbnail of the photo appears in the Preview window. You can select more than one with **Shift** + click or **Ctrl** + click (Windows), or **Shift** + click or **⌘** + click (Macintosh). Click **Select All** to select them all.
5. Do one of the following to add photos to your roll:
 - Click **Move** to remove the originals from their source and move them to the folder where Film Factory stores images.
 - Click **Copy** to leave the originals where they are and place a copy in the folder where Film Factory stores images.

The photos appear in the roll.

6. On a Macintosh, click **Choose** or **Open**.

Adding photos from a TWAIN device

Follow the steps below to download photos using a TWAIN device, such as a digital camera or scanner (not available with OS X). Film Factory works with all digital camera image formats.



Make sure your device is TWAIN compliant before you try importing photos. The device should be connected to your computer and ready to use. See the instructions that came with your device for help.

To import photos from your camera or scanner:

1. From the Main Menu, select the film roll to which you want to add photos.

If the film roll you want is in another film case, click the down arrow on the **Film Cases** icon to display the other film cases.



Click here to see other film cases

2. Click the **Import** button, and choose **From TWAIN Device**. The software used to transfer photos from your camera or scanner to your computer is started.
3. Import your photos to the selected roll of film using the software that was started. See the instructions that came with the software for help.

Adding photos from removable media or a PC card

Follow the steps below if you want to import files from a removable device such as CD-ROM, Zip disk, or PC card.



With Macintosh OS X, it's best to copy your photos to a folder on your hard disk and manage your photos from there.

1. Insert the disk in the appropriate drive.
2. From the Main Menu, select the film roll to which you want to add photos.

If the film roll you want is in another film case, click the down arrow on the **Film Cases** icon to display the other film cases.



Click here to see other film cases

3. Click the **Import** button, then select **From Removable Media** or **From PC Card** from the drop-down menu. The **Import Files** (or **Choose a File**) window appears.
4. Navigate to the disk and directory where the photos are stored.
5. Click the filename you wish to add. A thumbnail of the photo is displayed. You can select more than one with **Shift** + click or **Ctrl** + click (Windows) or **Shift** + **⌘** + click (Macintosh). Click **Select All** to select them all.
6. Do one of the following to add photos to your roll:
 - Click **Move** to remove the originals from their source and move them to the folder where Film Factory stores images.
 - Click **Copy** to leave the originals where they are and place a copy in the folder where Film Factory stores images.

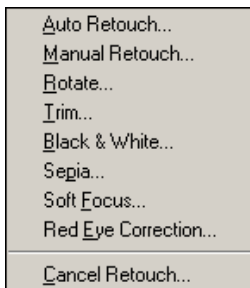
The photos appear in the roll.

7. On the Macintosh, click **Choose** or **Open**.

Retouching Your Photos

You can retouch your photos to improve the quality or add special effects. Film Factory can automatically retouch photos for you or you can do it yourself manually. In most cases, retouching does not modify the original photos.

When you click the **Retouch** button, you see this menu:



- To retouch photos automatically, see [page 19](#).

- To manually change the brightness, contrast, and color, see [page 20](#).
- To rotate a photo, see [page 21](#).
- To crop a photo, see [page 22](#).
- To change the color to black and white or sepia tone, see [page 23](#).
- To enhance the image with soft focus, see [page 24](#).
- To correct red eyes in a photo, see [page 25](#).
- To cancel retouching, see [page 26](#).



If you retouch a PRINT Image Matching or Exif Print photo, depending on how you retouch it, it may lose its PRINT Image Matching or Exif Print data. To restore the PRINT Image Matching or Exif Print data, use the Cancel Retouch option in the Retouch menu. If you overwrite the original image when you retouch the photo, you can't restore the PRINT Image Matching or Exif Print data (not applicable to OS X).

Automatically Retouching a Photo

When you let Film Factory automatically retouch a photo, the program adjusts the color balance, brightness, and contrast.



Before



After

1. Select the roll and then the photo(s) you want to retouch.
2. Click the **Retouch** button and then select **Auto Retouch**.
3. The Auto Retouch window shows the photos you selected before and after retouching. All the retouched photos are outlined with a blue border, indicating that they are selected to be changed.

You can do the following:

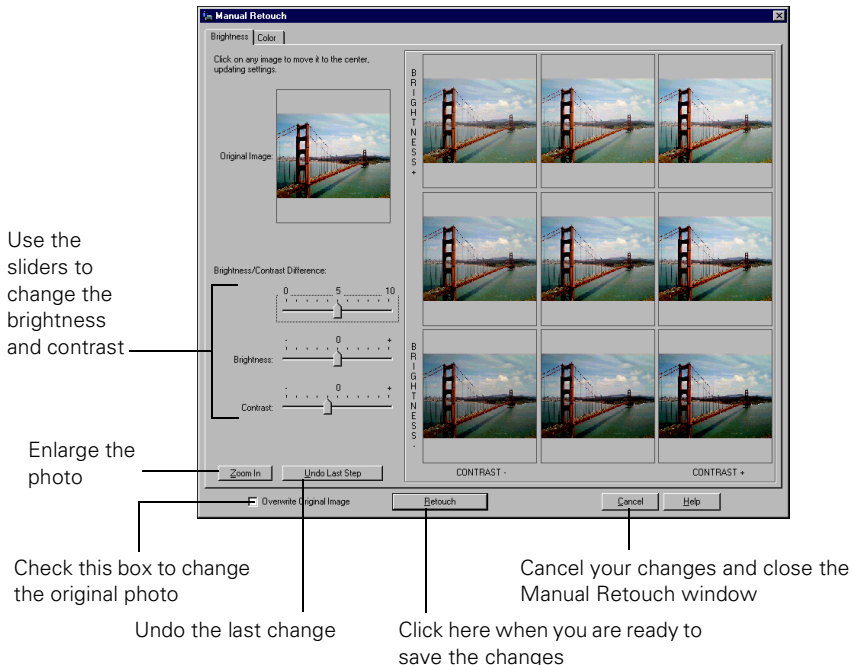
- Click on any of the original photos in the top row that you do not want to be retouched. They will display the blue border when you click them.
- Use the horizontal scroll bar to see more photos, if necessary.
- Click **Select All** in either row to select all the images in that row.
- To replace the original photos, check the **Overwrite Original Image** box. *These changes cannot be reversed.* Otherwise, you can undo retouches with the **Cancel Retouch** command on the Retouch menu. (The retouching information is stored in the Film Factory database.)

4. Click **Make Changes**. The photos are retouched.

Manually Retouching a Photo

If you want greater control when retouching an image, follow these steps:

1. Select the roll and then the photo you want to retouch.
2. Click the **Retouch** button and select **Manual Retouch**. You see this window:



3. Click the **Brightness** tab to adjust the brightness and contrast. Click the **Color** tab to adjust the red, green, and blue values in the image.

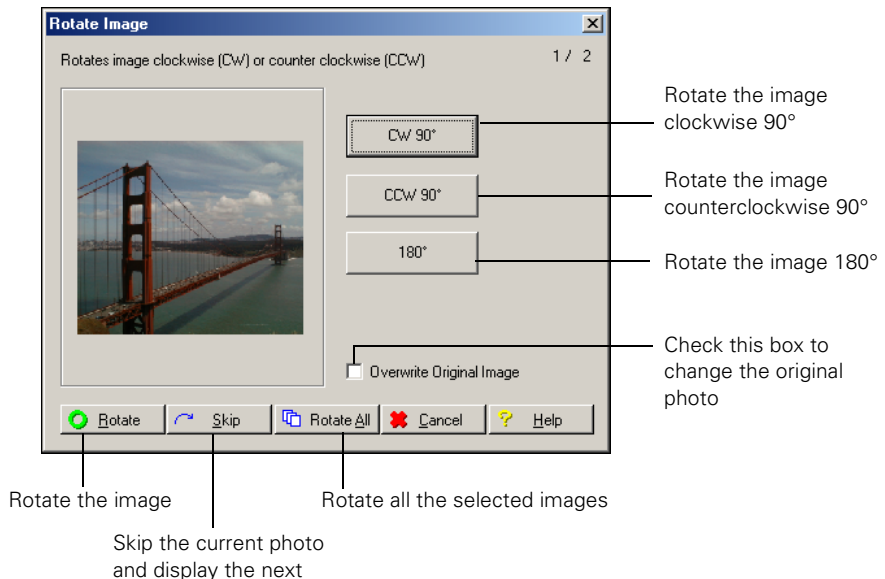
You can either use the sliders to make the adjustment or select the image you like best from the 9 choices displayed.

4. If you want the changes to be made to the original photo file, check the **Overwrite Original Image** box.
5. When you are happy with the changes, click the **Retouch** button.

Rotating an Image

You can rotate an image 90° or 180° as follows:

1. Select the roll and then the photo(s) you want to rotate.
2. Click the **Retouch** button and then select **Rotate**. You see the following:

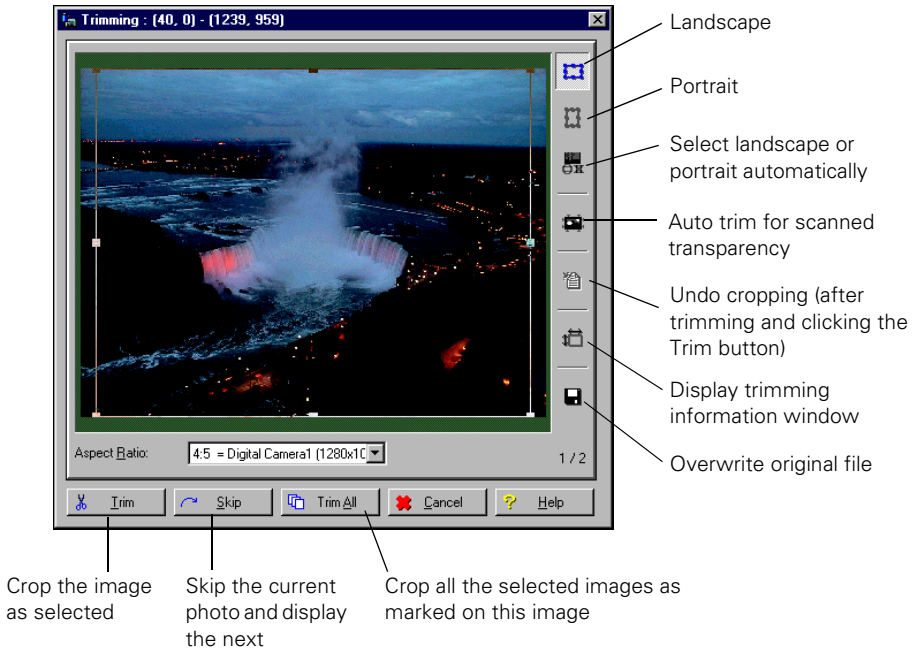


3. Select the rotation you want (CW 90°, CCW90°, or 180°) and then click the **Rotate** button. (Click **Rotate All** if you want to rotate all the selected images.)
4. If you want to rotate the original photo file, check the **Overwrite Original Image** box.

Cropping an Image

You can crop an image to make it more effective. Follow these steps:


1. Select the roll and then the photo(s) you want to crop.
2. Click the **Retouch** button and select **Trim**. You see this window:



3. Select one of the trim tools on the right side of the window to select the crop format you want. Then place the cursor on the frame line and move the borders in to crop the image. You can move the box around to capture the desired part of the photo.

Make sure the proper photo format is selected in the **Aspect Ratio** pull down menu. (For more information, click **Help**.)

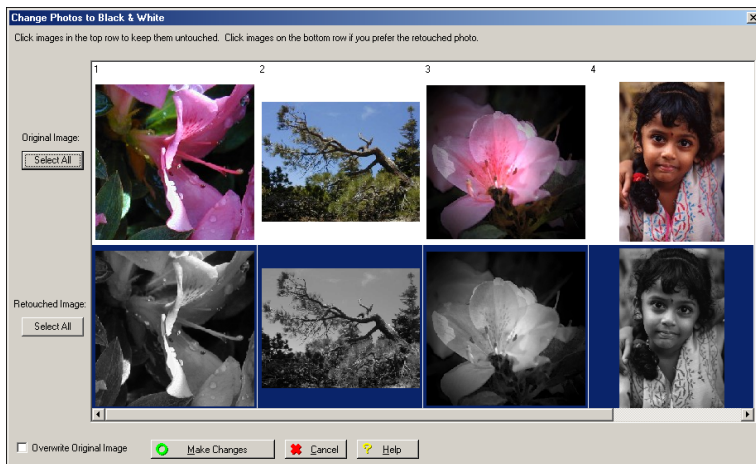
4. When the image is framed like you want, click the **Trim** button to crop it.
If you want to crop all the selected images the same way, click **Trim All**.

If you don't like the way the picture is cropped, click **Skip** to go to the next picture or **Cancel** to close the Trimming window. If you clicked **Trim** already and want to cancel it, select the image and select **Trim** from the Retouch menu. Then click the  tool to undo it and click the **Trim** button.

Changing Color to Black and White or Sepia

You can turn your color photos into black and white or sepia tone images. Follow these steps:

1. Select the roll and then the photo(s) you want to retouch.
2. Click the **Retouch** button and then select either **Black & White** or **Sepia**. You see this window:



3. The window shows the photos you selected before and after changing the tone. All the retouched photos are outlined with a blue border, indicating that they are selected to be changed. You can do the following:
 - Click on any of the original photos in the top row that you do not want to be changed. They will display the blue border when you click them.
 - Use the horizontal scroll bar to see more photos, if necessary.
 - Click **Select All** in either row to select all the images in that row.

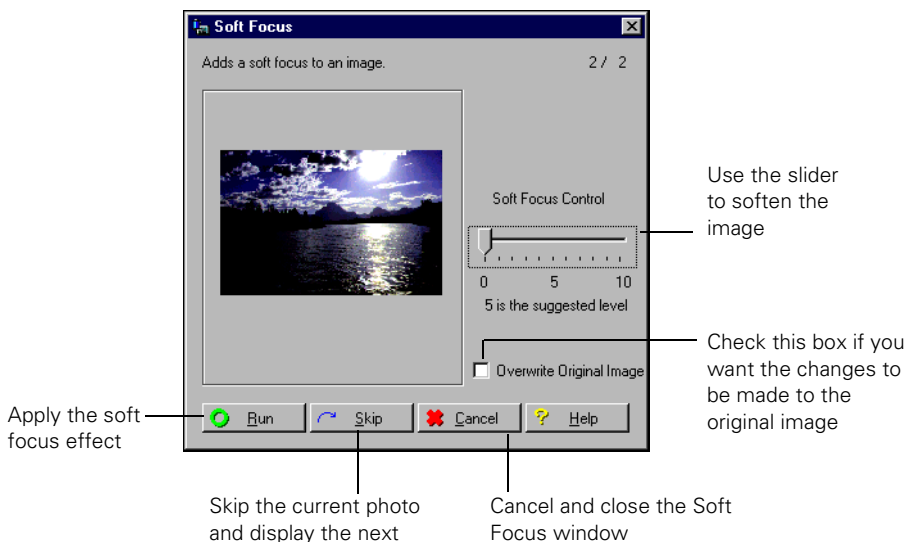
- To replace the original photos, check the **Overwrite Original Image** box. *These changes cannot be reversed.* If you don't replace the original photos, you can undo retouches with the **Cancel Retouch** command on the Retouch menu.

4. When you are ready, click **Make Changes**. The photos are retouched.

Applying a Soft Focus Effect

Follow these steps to give your photos a soft focus effect:

1. Select the roll and then select the photo(s) you want to retouch.
2. Click the **Retouch** button and select **Soft Focus**. You see the following:



3. Use the slider to increase or decrease the soft focus effect.
4. When you are happy with the image, click **Run**. If you selected more than one photo, the next one is displayed.

Correcting Red Eye

If you have a photo of a person whose eyes appear red from the reflection of the camera's flash, you can correct them as described below.



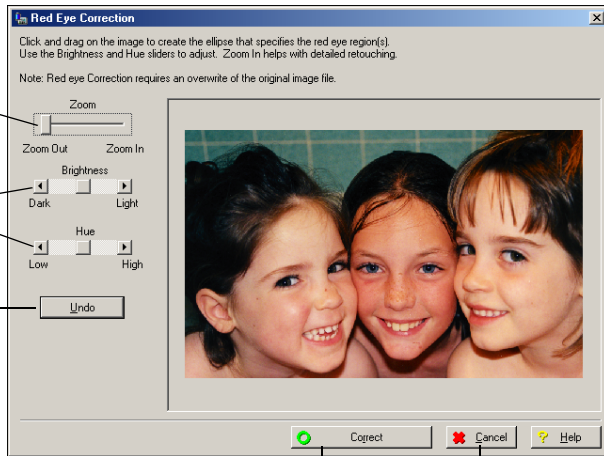
Any changes you make are made to the original photo and cannot be undone.

1. Select the roll and then the photo(s) you want to retouch.
2. Click the **Retouch** button and select **Red Eye Correction**. You see the following:

Use the slider to zoom in on the eyes

Adjust the brightness and hue

Undo the last adjustment



Apply the changes

Cancel the changes and close the window

3. Use the **Zoom** slider to enlarge the photo.
4. Use your mouse to click on the eye area, then drag the ellipse shape to define the area you want to adjust.
5. Use the sliders to increase or decrease the brightness or hue.
6. When you are done, click **Correct** to apply the changes to the photo.

If you change your mind, click **Cancel** to cancel the changes and close the window.

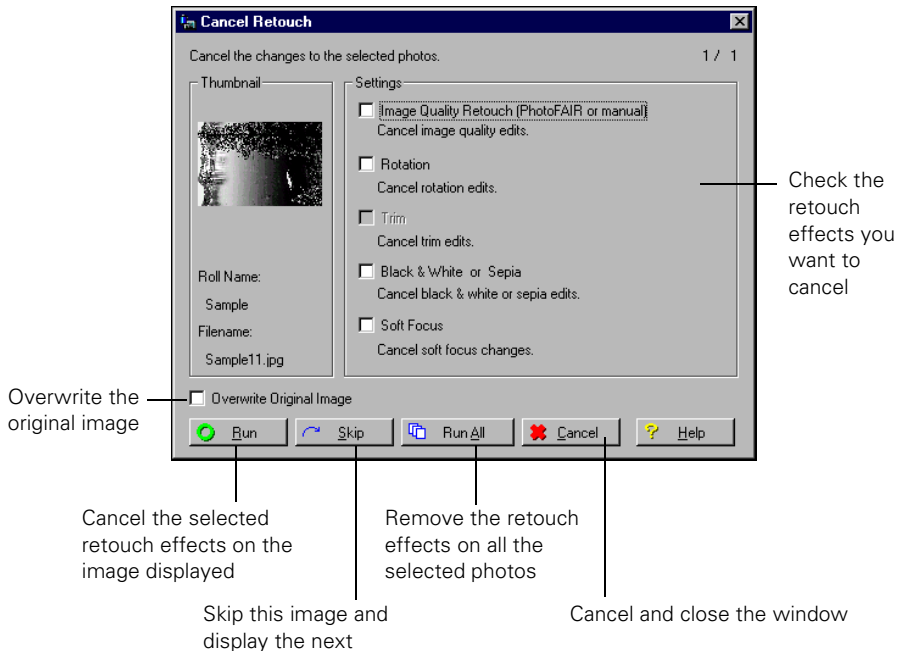
Canceling Retouch Changes

If you change your mind after retouching your photo(s), follow the steps below to remove the retouching effects and restore the original photo.



If you checked the Overwrite Original Image box when you made the changes, you cannot cancel the retouch changes.

1. Select the photo(s) for which you want to cancel the retouching.
2. Click the **Retouch** button and select **Cancel Retouch**. You see this window:



3. The first image you selected is displayed. Check the boxes for the effects you want to cancel.

If you want to leave this image unchanged and go on to the next, click **Skip**.

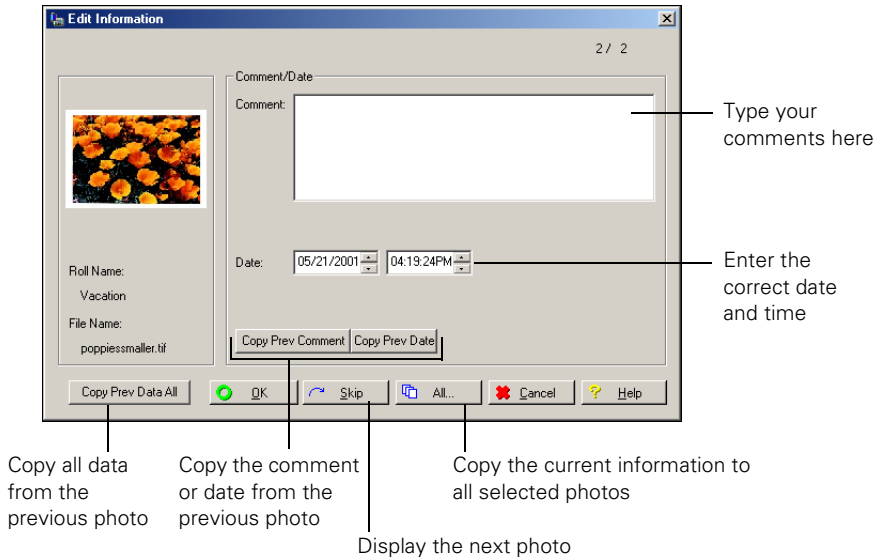
4. When you are ready, click **Run** to cancel the retouching. If you want to cancel the retouching on all the selected photos, click **Run All**. You see a confirmation window. Click **OK** again.

Adding Comments or Sound to a Photo

You can annotate your photos with text and the date to help identify them. If you are using Windows, you can also add sound.

Adding Text

1. Select the photo(s) to which you want to add a comment.
2. Click the Text button. You see the Edit Information window:

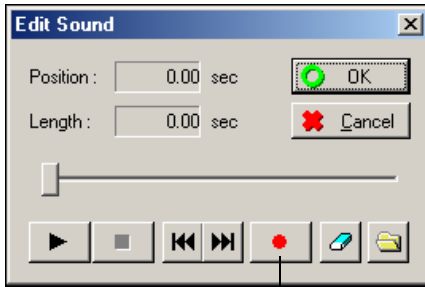


3. Enter the information you want for this photo. Then click **OK**. If more than one photo was selected, you see the next one.

If you don't want to enter or change any information for this photo and you selected more than one, click **Skip** to go to the next one.


Adding Sound (Windows Only)

1. Select the photo to which you want to add sound.
2. From the Edit menu, select **Edit Sound**. You see this window:



Click here to start recording

3. Click on the red button and then start recording. When you finish, click **OK**.

You see a speaker icon in the upper right corner of the photo: 

Click the speaker icon to play the sound for a photo. You can also select the photo and then choose **Play Sound** from the Edit menu.

To delete the sound from a photo, select the photo and then choose **Delete Sound** from the Edit menu.

Managing Your Photos, Film Rolls, and Film Cases

The more rolls and cases you create, the more important it will become to organize them. Film Factory makes it easy to move, copy, and delete photos, film rolls, and film cases. It also features convenient ways to view your photos, find missing ones, or sort them by name or date.

Using the Viewer to Display Photos

When you want to see a picture in detail, use the Viewer option. Select one or more photos and then click the **Viewer** button. (You can also double-click on the photo.) The first photo appears enlarged on the screen with this toolbar on top:



You can do the following:

- Click **Next** or **Prev** to display the other photos if you selected more than one.
- Click **Window** to display the photo in the current window.
- Click **Original** to display the image at the resolution it was taken.
- Click **Screen** to use the whole screen for the image.
- Click **Slide** to run a slide show of the selected photos. (See [“Creating a Photo Slide Show” on page 56](#) for more information.)
- Click **Exit** to close the Viewer.

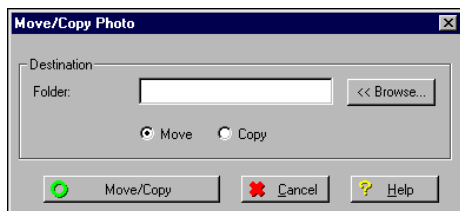
Moving or Copying a Photo to Another Roll

You can easily move or copy photos from one roll to another.

To copy a photo, make sure both the roll you want to copy from and the roll you want to copy to appear in the Film Factory window. (Select **All Rolls** under Film Cases to display all your rolls.) Then select the photo you want to copy and drag and drop it to the other roll. You can select multiple photos at once.

To move (or copy) photos to another roll (folder) follow these steps:

1. Select the roll and photo(s) you want to move or copy.
2. From the Edit menu, select **Move/Copy Photo**. You see this window:



3. In Windows, type the name of the folder where you want to move or copy the photo or click the **Browse** button to navigate to the correct folder.

On the Macintosh, click **Browse** and select the folder to which you want to move or copy the photo, then click **Choose**.

4. Select **Move** to move the photo or select **Copy** to make a copy of it.
5. Click the **Move/Copy** button.



You can also add a photo to an existing roll by importing it, as described under [“Adding Photos to a Roll” on page 15](#).

Deleting a Photo From a Roll

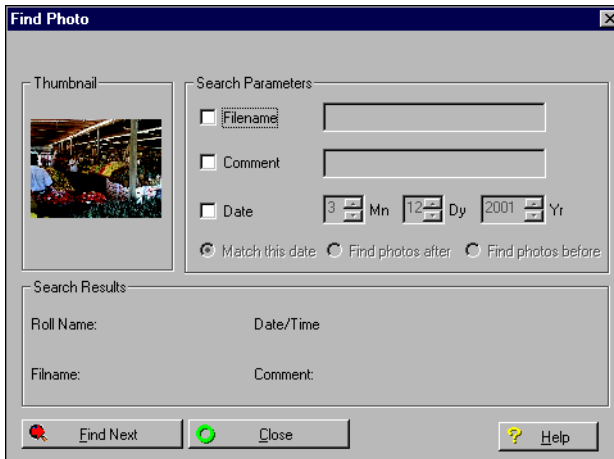
If you want to delete one or more photos from a roll, follow these steps:

1. Select the roll and then the photo(s) you want to delete.
2. Select **Delete Photo** from the Edit menu.
3. At the confirmation window, click **Yes**.

The photo is deleted from the roll.

Finding a Photo

If you are not sure where to find a particular photo, Film Factory can help. Click the **Find** button or select **Find Photo** from the Edit menu. You see this window:



You can search for the image by filename, comment, or date. For example, if you know the name of the file but not which roll it's in, click the filename checkbox, type the name, and press **Enter**. Film Factory finds the file and displays the complete information in the Search Results box.



If you know only part of the filename, you can type just the part you know and Film Factory will find any photos with matching characters in the name.

Sorting Photos and Film Rolls

When you are looking at a roll of photos, you can sort them by name or date, in ascending or descending order. From the View menu, select **Sort Photos** or **Sort Rolls** and then select the sort method.

Renaming a Roll

Follow these steps to change the name of an existing roll:

1. Select the roll you want to rename.
2. Click the **Roll** button and select **Rename Roll**.
3. Type the new name for the roll. You can also add a comment, specify the date, and change the folder where you want the roll to be stored.

If the roll is stored on a removable media device, you can enter the name for the disk and select whether you want Film Factory to record its databases to the disk. If you copy the databases, Film Factory records the film case, film roll, and any other photo information on the removable device so this information stays with the photos.

4. When you are done, click **Rename**.

Moving a Roll

Follow the steps below to move a roll of photos to another folder on your hard disk (or other device).



If you want to move a film roll to another film case, see [“Moving a roll to another case” on page 35](#).

1. Select the roll you want to move.
2. Click the **Roll** button and select **Move Roll**.
3. In Windows, type the name of the folder where you want to move the roll (or click **Browse** to find it).

On the Macintosh, click **Browse** and select the destination folder, then click **Choose**.

You can also add a comment, specify the date, and change the folder where you want the roll to be stored.

If you are moving the roll to a removable media device, you can enter the name for the disk and select whether you want Film Factory to record its databases on the disk. If you copy the databases, Film Factory records the film case, film roll, and any other photo information on the removable device so this information stays with the photos.

4. When you are done, click **Move**.



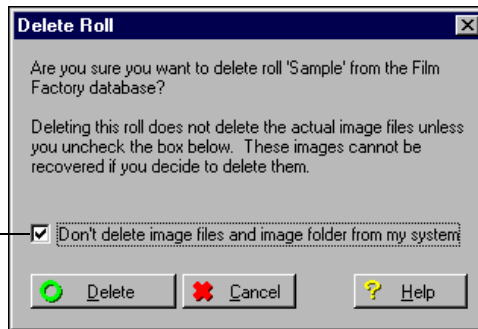
If you're not sure where a film roll is stored, right-click your mouse (Windows) or Ctrl + click (Macintosh) to display information about the roll including its location.

Deleting a Roll

If you want to delete a film roll, follow these steps:

1. Select the roll you want to delete.
2. Click the **Roll** button and select **Delete Roll**. You see this window:

Leave this box checked—
unless you want to delete
the file from your hard
disk or removable device



When you delete the roll, Film Factory does not delete the files from your hard disk or removable device *unless* you uncheck the “Don’t delete image files...” box. So make sure this box remains checked if you want to keep the image files.

3. When you are ready, click **Delete**.

Working With Film Cases

Film cases allow you to group rolls of film by subject to make it easier to manage your photos. Follow the instructions below to create, move, and delete a film case.

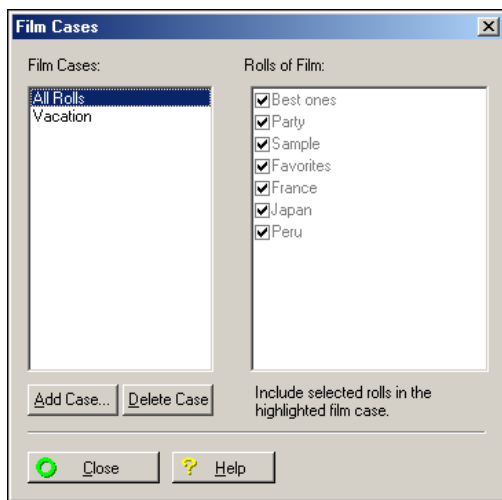
Creating a film case

Follow these steps to create a film case:

1. Click the **Film Cases** text on the Film Cases icon.



You see this window:



2. The rolls of film with the check marks are the ones kept in the selected film case. A roll can appear in more than one film case.
3. Click the **Add Case** button. Enter a name and click **OK**. The new case name is added on the left side.
4. To add rolls to the new case, click the check box for each roll you want to add. If you change your mind, click the box again to uncheck it.
5. When you are finished, click **Close**. The new case is selected automatically.

To display all existing rolls in all cases, select **All Rolls** from the Film Cases drop-down list.

Moving a roll to another case

If you want to move a film roll to another case, follow these steps:

1. Click the **Film Cases** text on the Film Cases icon.
2. Select the film case holding the roll you want to move.
3. Click on the check box next to the roll to uncheck it.
4. Select the case where you want the roll to appear and click the check box for the roll.
5. Click **Close**.

Deleting a film case

Follow these steps to delete a film case:

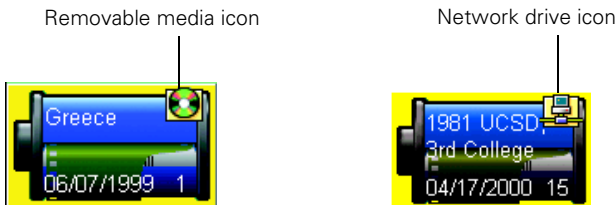
1. Click the **Film Cases** text on the Film Cases icon.
2. Select the case you want to delete in the Film Cases window.
3. Click **Delete Case**.
4. When you see the confirmation window, click **OK**. The case is deleted from the Film Cases window.
5. Click **Close**.

Although the case is deleted, the film rolls and photos are left unchanged.

Managing Photos on Removable Media and Networks

Large photo files don't have to take up space on your hard drive; just store them on your Zip disk, CD-ROM, or other removable media. If, for example, you have your photos developed and returned to you on a CD-ROM, you can create a roll without storing the actual photos on your hard drive.








Likewise, rolls for network images can be viewed as thumbnails and searched by photo comments even when the network is offline. Rolls of film that are stored on removable media or network drives have an icon in the corner that indicates where the rolls are located.



When you want to print an image, a message appears telling you the name of the media disk where the file can be found. Just insert the disk to continue printing.

Printing Your Photos

This section describes how to print your photos using the print options displayed along the left side of the main screen.

<i>Print Option</i>	<i>Description</i>	<i>Page</i>
 Standard Prints	Print one or more photos in standard picture sizes, such as 2×3 , 3.5×5 (standard), 4×6 , etc.	38
 Index Prints	Print an index (or “contact”) sheet of selected photos.	40
 Duplicate Prints	Print duplicate copies of selected photos. You can specify the number of duplicates for each photo.	42
 Album Pages	Print selected photos in a photo album layout, and add captions to the photos.	44
 Greeting Cards	Print photos in greeting card layouts with or without text.	47
 Sticker Prints	Print a sheet of stickers, including frames and other graphics, for a selected photo.	51
 Combo Prints	Print a single image 3, 4, or 5 times on a sheet	53

Before you start printing, check your printer documentation to make sure you load the paper correctly in your printer and select the correct paper size and other printer settings.

Standard Prints



You can print one or more photos in standard picture sizes, such as 2×3 , 3.5×5 (standard), or 4×6 . Use this feature to print photos from an existing roll. You can also create a new roll of film, import photos, and print—all in one step.

1. Click Standard Prints.

2. Step 1 Select Roll is highlighted. Select the roll containing the photo(s) you want to print.



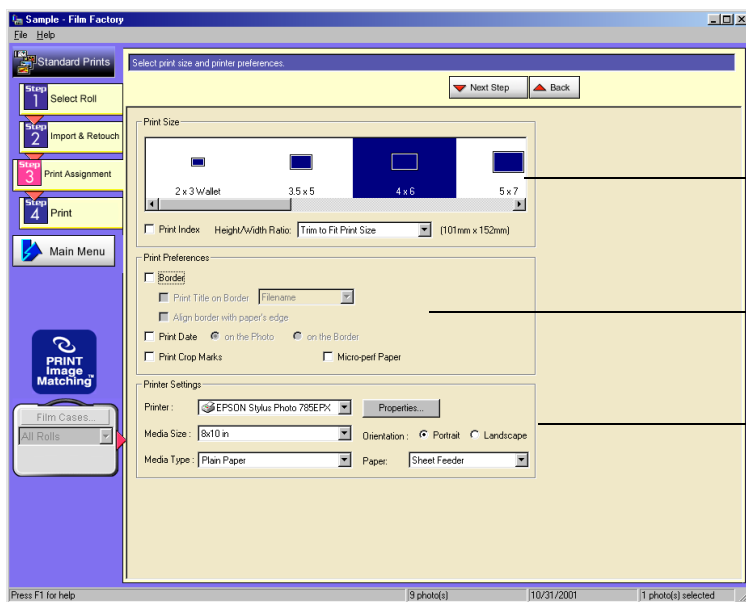
If you want to create a roll at this time, click the Roll button and choose one of the New Roll options. (See [“Creating a Roll of Film” on page 12](#) for more information.)

3. Click Step 2 Import & Retouch. Click on the photo(s) you want to print.



If you want to add a photo to this roll, click the Import button and choose the option you want. (See [“Adding Photos to a Roll” on page 15](#) for more information.) Imported photos are automatically retouched.

4. Click Step 3 Print Assignment. You see this window:

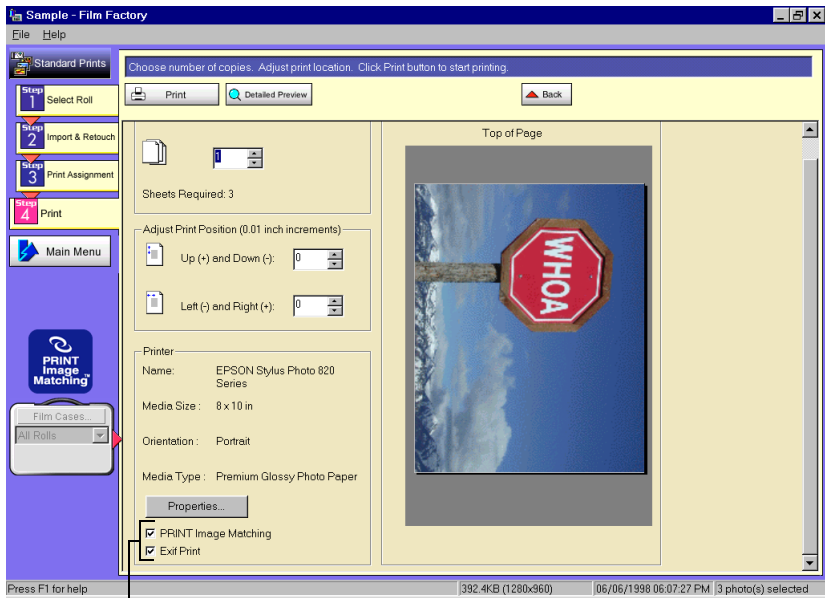


Select the size of print, such as 2×3 or 4×6 . Use the scroll bar to see more options. Choose any options in the Print Preferences box you want to use.

With Windows and Macintosh OS 9.x, check the Printer Settings. If the Printer, Media Type (EPSON printers only), or Paper Size setting is incorrect, click the **Properties** button and select the appropriate setting. (See your printer documentation for details.)

With Macintosh OS X, click the **Properties** button. Select your printer in the **Format for** menu, then select the correct Paper Size setting. (Once you've selected your printer, you can select your paper size as the Media Size setting on the Film Factory screen.)


5. Click **Step 4 Print**. You see this screen:



If these checkboxes are selected, leave them checked for the best printed output using P.I.M. and or Exif Print data

6. Choose the number of copies you want. Film Factory tells you how many sheets of paper are required. You can click the **Detailed Preview** button to see the image enlarged.

Leave the **PRINT Image Matching** and/or **Exif Print** box checked for the best results when printing photos containing P.I.M. and/or Exif Print data (not applicable to OS X).

7. When you are ready, click  **Print** .

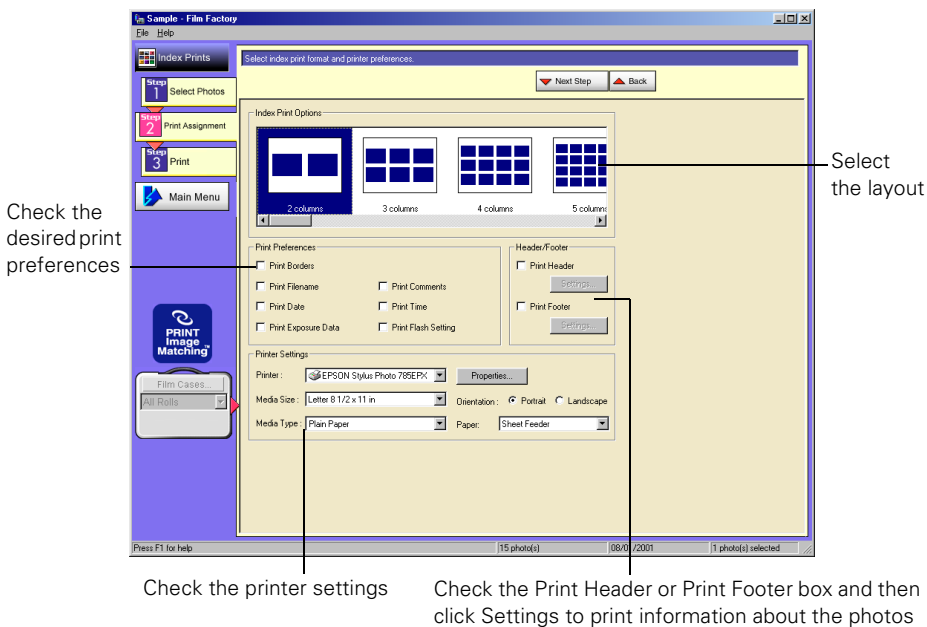
With Macintosh OS 9.x, you see the printer settings window. Click **Print**.

With Macintosh OS X, you see the printer settings window. Select **Print Settings** from the Copies & Pages pull-down menu. Then select your Media Type (EPSON printers only) and other print settings as necessary, and click **Print**.

Index Prints

Follow the steps below to print an index (or “contact”) sheet of selected photos in thumbnail size. This provides a convenient way to see all the photos in a roll or a selection of your favorite shots.

1. Click **Index Prints**.
2. **Step 1 Select Photos** is highlighted. Select the roll and click on the photos you want to print. Click the **Select All** button to print all the photos in the roll on the index sheet.
3. Click **Step 2 Print Assignment**. You see this screen:



4. Select the format for the index sheet, such as 2 columns, 3 columns, or 4 columns. Use the scroll bar to see more options.


Choose any options you want to use in the Print Preferences box.

With Windows and Macintosh OS 9.x, check the Printer Settings. If the Printer, Media Type (EPSON printers only), or Paper Size setting is incorrect, click the **Properties** button and select the appropriate setting. (See your printer documentation for details.)

With Macintosh OS X, click the **Properties** button. Select your printer in the **Format for** menu, then select the correct Paper Size setting. (Once you've selected your printer, you can select your paper size as the Media Size setting on the Film Factory screen.)

5. Click **Step 3 Print**. Choose the number of copies. Film Factory tells you how many sheets of paper are required. For a closer look, click the **Detailed Preview** button.

Leave the **PRINT Image Matching** and/or **Exif Print** box checked for the best results when printing photos containing P.I.M. and/or Exif Print data (not applicable to OS X).

6. When you are ready, click  **Print** .

With Macintosh OS 9.x, you see the printer settings window. Click **Print**.

With Macintosh OS X, you see the printer settings window. Select **Print Settings** from the Copies & Pages pull-down menu. Then select your Media Type (EPSON printers only) and other print settings as necessary, and click **Print**.

Duplicate Prints

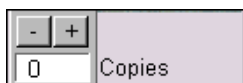


You can print duplicate copies of selected photos on one sheet by specifying the number of duplicates for each selected photo.

1. Click **Duplicate Prints**.
2. **Step 1 Select Photos** is highlighted.

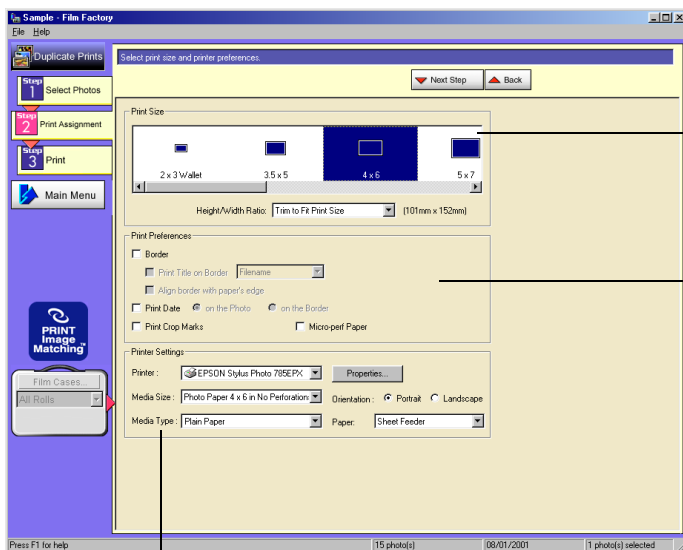
To create one duplicate of all the photos, click the **1 copy of each** button at the top of the screen.

To print one or more copies of selected photos, click on each photo you want. Film Factory displays the following at the bottom of the picture:



Click the **+** or **-** button to select the number of copies you want to print for that photo.

3. Click **Step 2 Print Assignment**. You see this screen:



Select the layout you want

Select whether to print a border, date, or crop marks

Check the printer settings


4. Select the size of print, such as 2×3 or 4×6 . (Use the scroll bar to see more options.) Choose any options you want to use in the **Print Preferences** box.

With Windows and Macintosh OS 9.x, check the Printer Settings. If the Printer, Media Type (EPSON printers only), or Paper Size setting is incorrect, click the **Properties** button and select the appropriate setting. (See your printer documentation for details.)

With Macintosh OS X, click the **Properties** button. Select your printer in the **Format for** menu, then select the correct Paper Size setting. (Once you've selected your printer, you can select your paper size as the Media Size setting on the Film Factory screen.)

5. Click **Step 3 Print**. Choose the number of copies of the previewed page you want to print. For a closer look, click the **Detailed Preview** button.

Leave the **PRINT Image Matching** and/or **Exif Print** box checked for the best results when printing photos containing P.I.M. and/or Exif Print data (not applicable to OS X).

6. When you are ready, click  **Print** .

With Macintosh OS 9.x, you see the printer settings window. Click **Print**.

With Macintosh OS X, you see the printer settings window. Select **Print Settings** from the Copies & Pages pull-down menu. Then select your Media Type (EPSON printers only) and other print settings as necessary, and click **Print**.

Album Pages



You can print selected photos in a photo album layout and even add captions to the photos. Follow these steps:

1. Click **Album Pages**.
2. **Step 1 Select Photos** is highlighted. Select the photos in the order you want them to appear in your album:

- Click **Select All** to print photos in the order they appear in the main screen.
- Click on the photos individually in the order you want them to print for your album. As you click on a photo, a number appears at the bottom left corner of each photo indicating its order in the sequence.



If you deselect a photo by clicking it again, the other photos are renumbered.

3. Click **Step 2 Choose Layout**. You see this screen:

Select whether to print a border or date with the photo

Select the layout you want

Check the printer settings

Check the Print Header or Print Footer box and then click Settings to print information about the photos

4. Select a layout style for your album pages, such as **3-Left**, **4-Right**, or **2 × 3**. (Use the scroll bar to see more options.)

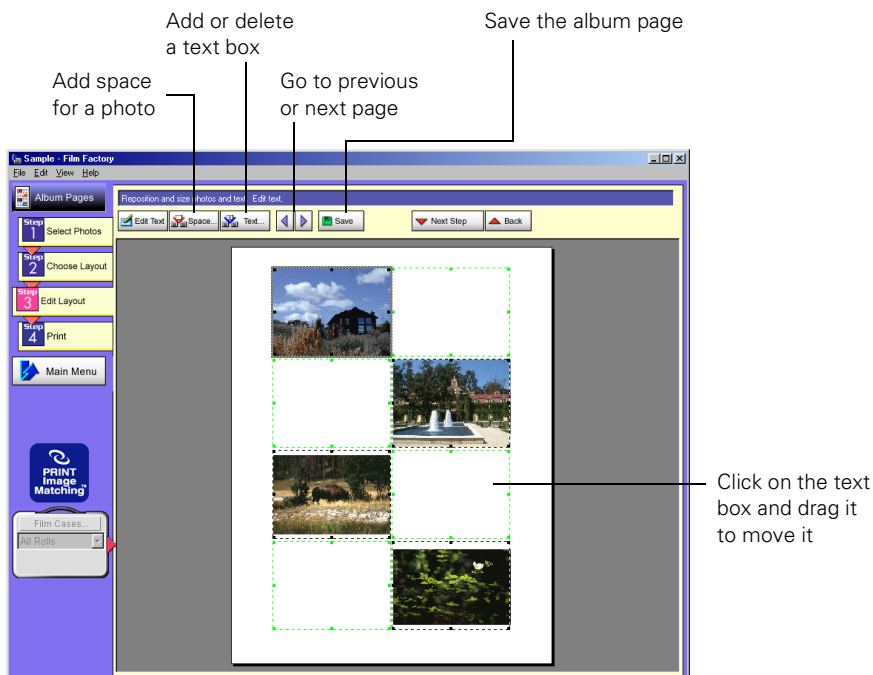
If you want to print a border or date with the photo(s), check the appropriate box.

If you want to include the roll name, check the **Print Header** box; to add the page number check the **Print Footer** box. For either of these, you can click the **Settings** button to change the font effects.

With Windows and Macintosh OS 9.x, check the Printer Settings. If the Printer, Media Type (EPSON printers only), or Paper Size setting is incorrect, click the **Properties** button and select the appropriate setting. (See your printer documentation for details.)

With Macintosh OS X, click the **Properties** button. Select your printer in the **Format for** menu, then select the correct Paper Size setting. (Once you've selected your printer, you can select your paper size as the Media Size setting on the Film Factory screen.)


5. Click **Step 3 Edit Layout** to move your photos and text boxes anywhere on the album page.



You can click and drag an image or text box to move or resize it.

6. To add text, select a text box by clicking on it and then click **Edit Text**. If your photos have comments, they will be displayed. Type the text you want and change the font, if desired, by clicking the **Font** button. When you are done making changes, click **OK**.
7. If you want to save the album page, click **Save** and enter the filename and location where you want to save it. (To retrieve a page, click the **Album Page** option and then click **Open**.)
8. Click **Step 4 Print**. Choose the number of copies you want. Film Factory tells you how many sheets of paper are required. For a closer look, click the **Detailed Preview** button.

Leave the **PRINT Image Matching** and/or **Exif Print** box checked for the best results when printing photos containing P.I.M. and/or Exif Print data (not applicable to OS X).

9. When you are ready, click  **Print** .

With Macintosh OS 9.x, you see the printer settings window. Click **Print**.

With Macintosh OS X, you see the printer settings window. Select **Print Settings** from the Copies & Pages pull-down menu. Then select your Media Type (EPSON printers only) and other print settings as necessary, and click **Print**.

Greeting Cards



Using the Greeting Card option, you can print selected photos and text in a greeting card layout, as described below.



EPSON offers Glossy Photo Greeting Card media designed specifically for EPSON Stylus® color ink jet printers. When used with Film Factory, your photos are printed edge-to-edge. The 8.5 × 11-inch sheets are perforated along three sides so you can easily remove the border after printing; the finished card measures 4.7 × 7 inches (119 mm × 178 mm) when folded. To order EPSON Glossy Photo Greeting Cards, call the EPSON Store at (800) 873-7766 or visit www.epsonstore.com (U.S. sales only). Use this part number: S041267.

Printing the front of the card

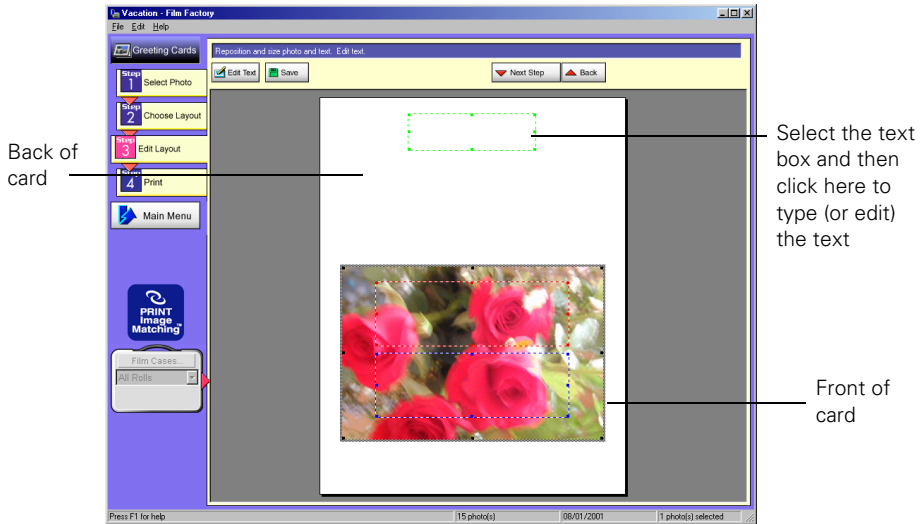
1. Click Greeting Cards.
2. **Step 1 Select Photo** is highlighted. Select the photo you want to appear on your greeting card. (You can select only one.)
3. Click **Step 2 Choose Layout**. Select a Greeting Card Style as follows:
 - If your picture is horizontal (and the card will be folded at the top), select a Top-Fold layout.
 - If the picture is vertical (and the card will be folded along the side), select a Side-Fold layout.
4. With Windows and Macintosh OS 9.x, make sure the Printer Settings are correct. If not, click the **Properties** button and select the appropriate ones. If you are using the EPSON Glossy Photo Greeting Card media in an EPSON printer, the media type should be Photo Paper or Glossy Photo Paper for the outside of the card. (See your printer documentation for details.)

With Macintosh OS X, click the **Properties** button. Select your printer in the **Format for** menu, then select the correct Paper Size setting. (Once you've selected your printer, you can select your paper size as the Media Size setting on the Film Factory screen.)



Do not change the Orientation setting. Film Factory automatically selects the correct orientation for the card style you have selected.

5. Click **Step 3 Edit Layout**.




6. If you want to type text over your picture or on the back of the card, click on the desired text box and then click the **Edit Text** button. Type the text you want and change the font, if desired, by clicking the **Font** button. You can move or resize the text box by clicking and dragging it.

When you are done making changes, click **OK**.

7. If you want to save the greeting card, click **Save** and enter the filename and location where you want to save it. (To retrieve a layout, click **Step 1 Select Photo**, and then click **Open**.)
8. Click **Step 4 Print**. You should print only one card at a time, so make sure the number of copies is set to 1. For a closer look, click the **Detailed Preview** button.

Leave the **PRINT Image Matching** and/or **Exif Print** box checked for the best results when printing photos containing P.I.M. and/or Exif Print data (not applicable to OS X).

Make sure your paper is loaded correctly. If you are using the EPSON Glossy Photo Greeting Card media in an EPSON printer, the glossy side should be face up and the paper's notched corner should be on the top right corner. (See your printer documentation for more information about loading greeting cards.)

9. When you are ready, click  **Print**.

With Macintosh OS 9.x, you see the printer settings window. Click **Print**.

With Macintosh OS X, you see the printer settings window. Select **Print Settings** from the Copies & Pages pull-down menu. Then select your Media Type (EPSON printers only) and other print settings as necessary, and click **Print**.

10. After the card has been printed, remove it from the printer.

If you want to print any text inside the card, see the next section.

Printing text inside the card

If you are using the EPSON Glossy Photo Greeting Card media, follow these steps to print text inside the card:

1. Click **Step 2 Choose Layout**. Select a Greeting Card Style:
 - If your picture is horizontal (and the card will be folded at the top), select **Inside Text (Top-Fold)**.
 - If your picture is vertical (and the card will be folded along the side), select **Inside Text (Side-Fold)**.
2. With Windows and Macintosh OS 9.x, make sure the Printer Settings are correct. If not, click the **Properties** button and select the appropriate ones. If you are using the EPSON Glossy Photo Greeting Card media in an EPSON printer, the media type should be **Plain Paper** for the inside of the card. (See your printer documentation for details.)

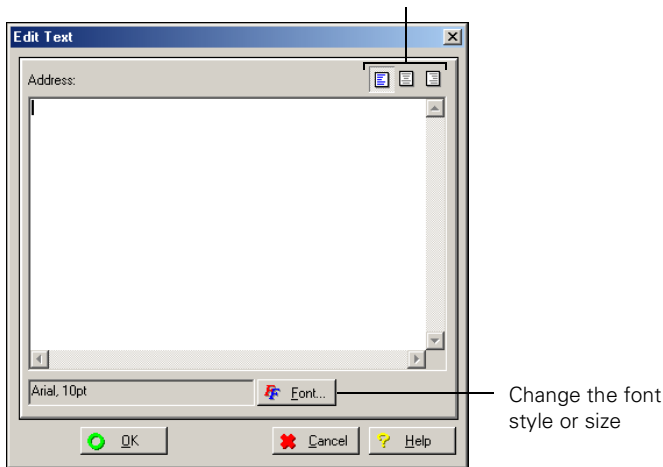
With Macintosh OS X, click the **Properties** button. Select your printer in the **Format for** menu, then select the correct Paper Size setting. (Once you've selected your printer, you can select your paper size as the Media Size setting on the Film Factory screen.)



Do not change the Orientation setting. Film Factory automatically selects the correct orientation for the card style you have selected.


3. Click **Step 3 Edit Layout**. Click on the desired text box and then click the **Edit Text** button. You see this screen:

Select left justified, centered, or right justified



4. Type the text you want and change the font, if desired, by clicking the **Font** button. You can also click one of the alignment buttons to change the text alignment, if necessary. When you are done making changes, click **OK**.
5. If you want to save the inside layout, click **Save** and enter the filename and location where you want to save it. (To retrieve a layout, click the **Step 1 Select Photo** option and then click **Open**.)
6. Click **Step 4 Print**. Make sure the number of copies is set to 1 and load the greeting card correctly so the inside of the card will be printed. If you are using the EPSON Glossy Photo Greeting Card media in an EPSON printer, the glossy side should be face down and the paper's notched corner should be at the bottom right corner.

For a closer look, click the **Detailed Preview** button.

7. When you are ready, click  **Print** .

With Macintosh OS 9.x, you see the printer settings window. Click **Print**.

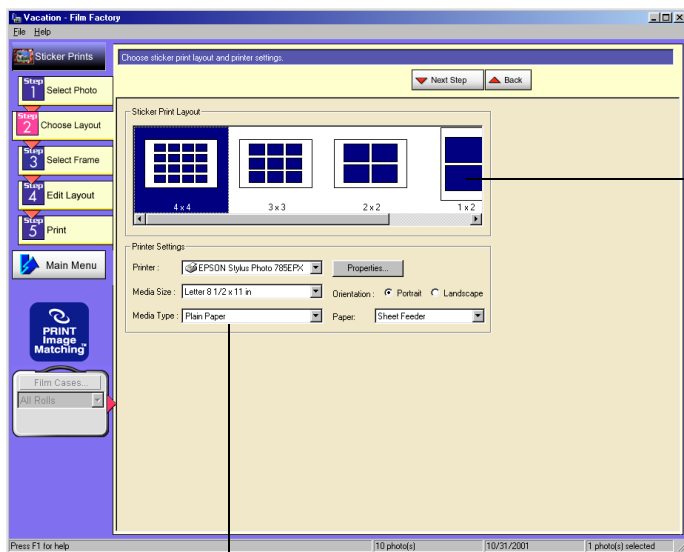
With Macintosh OS X, you see the printer settings window. Select **Print Settings** from the Copies & Pages pull-down menu. Then select your Media Type (EPSON printers only) and other print settings as necessary, and click **Print**.

Sticker Prints



Follow these steps to print a sheet of stickers, including frames and other graphics, for a selected photo:

1. Click **Sticker Prints**.
2. **Step 1 Select Photo** is highlighted. Select the photo you want to appear on your stickers. (You can select only one.)
3. Click **Step 2 Choose Layout**. You see this screen:



Select the layout you want




Check the printer settings

4. Select the Sticker Print Layout you want, such as 4×4 or 3×3 . (Use the scroll bar to see more options.) With Windows and Macintosh OS 9.x, make sure the printer settings are correct; if not, click the **Properties** button and change them as necessary.

If you are using EPSON Photo Sticker paper (product number S041144), select 4×4 as the Sticker Print Layout, A6 Index card 105 × 148 mm or A6 4.1 × 5.8 in as the Media Size, Landscape as the Orientation, and Photo Quality Glossy Film as the Media Type. If you are using other media, make sure the settings are correct for your paper; see your printer documentation.

With Macintosh OS X, click the **Properties** button. Select your printer in the **Format for** menu, then select the correct Paper Size setting. (Once you've selected your printer, you can select your paper size as the Media Size setting on the Film Factory screen.)

5. Click **Step 3 Select Frame**. Select the frame you want to use on your stickers or **No frames** if you don't want any. Use the scroll bar to see additional choices.
6. Click **Step 4 Edit Layout**. Your photo is displayed with the frame selection. Now you can modify the sticker as follows:

- Use the  buttons to reposition the frame.
- Use the  and  buttons to enlarge or reduce the image.
- Add text to your photo by clicking **Edit Text**. Type the text you want and change the font and alignment if desired. Then click **OK**. Once the text frame is added, you can drag it to its final position on the sticker.




If you want to change or delete text you have added, select the text box, click the **Edit Text** button and then change it as desired.

7. To save your layout, click **Save** and enter a filename and location for it. (To retrieve a layout, click **Step 1 Select Photo** and then **Open**.)
8. Click **Step 5 Print**. Choose the number of copies you want. Film Factory tells you how many sheets of stickers are required. You can click the **Detailed Preview** button to see a larger view of the sticker sheet. (See your printer documentation for instructions on loading sticker media.)

Leave the **PRINT Image Matching** and/or **Exif Print** box checked for the best results when printing photos containing P.I.M. and/or Exif Print data (not applicable to OS X).



You may want to experiment with sheets of plain paper before using your photo sticker sheets. To do this, cut several sheets of plain paper to match the size of your sticker sheets. Print a sheet of plain paper and then hold it up to a photo sticker sheet to test the alignment. If necessary, use the positioning tools in the **Adjust Print Position** box to match the photo frames to the stickers.

9. When you are ready, click .

With Macintosh OS 9.x, you see the printer settings window. Click **Print**.

With Macintosh OS X, you see the printer settings window. Select **Print Settings** from the Copies & Pages pull-down menu. Then select your Media Type (EPSON printers only) and other print settings as necessary, and click **Print**.

Click **Main Menu** to return to the main screen.

Combo Prints

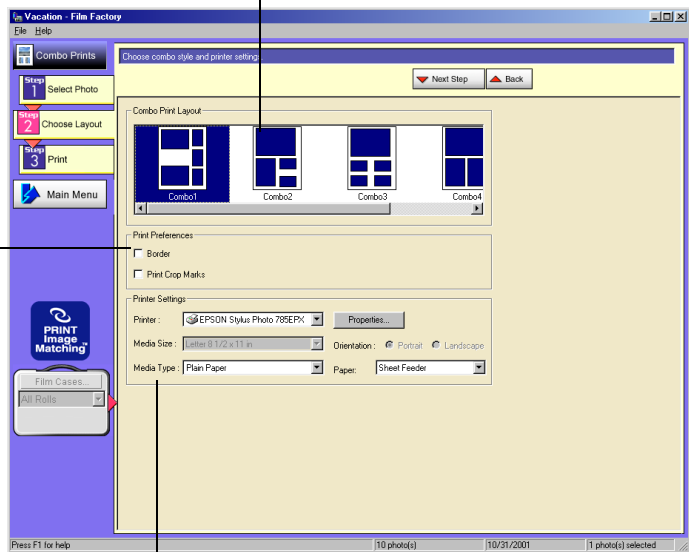


With the Combo Prints option, you can print a single photo multiple times on one sheet, like you might get from a professional photo studio. Follow these steps:

1. Click **Combo Prints**.
2. **Step 1 Select Photo** is highlighted. Select the photo you want to make a combo print of. (You can select only one.)
3. Click **Step 2 Choose Layout**. You see this screen:

Choose the layout you want

Check one of these boxes if you want borders or crop marks around each picture



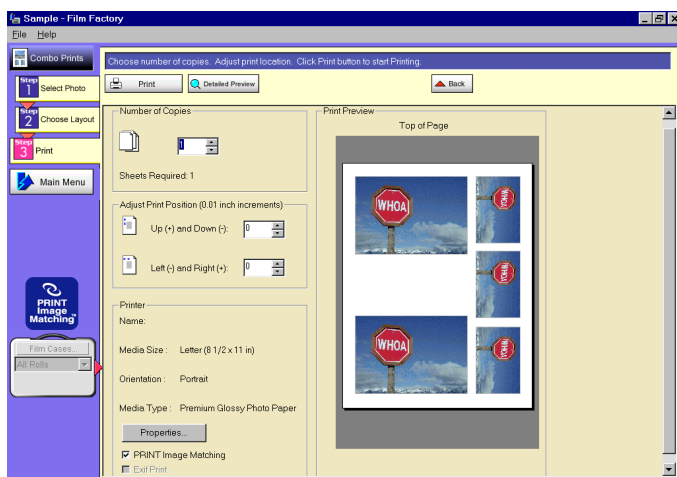
Check the printer settings

4. Select the Combo Print Layout you want. (Use the scroll bar to see more options.) If you want borders or crop marks around the photos, check the box under **Print Preferences**.

With Windows and Macintosh OS 9.x, make sure the printer settings are correct; if not, click the **Properties** button and change them as necessary.

With Macintosh OS X, click the **Properties** button. Select your printer in the **Format for** menu, then select the correct Paper Size setting. (Once you've selected your printer, you can select your paper size as the Media Size setting on the Film Factory screen.)

5. Click **Step 3 Print**. You see this screen:



6. Choose the number of copies you want. Film Factory tells you how many sheets of paper are required. Click **Detailed Preview** to see a larger view.

Leave the **PRINT Image Matching** and/or **Exif Print** box checked for the best results when printing photos containing P.I.M. and/or Exif Print data (not applicable to OS X).

7. When you are ready, click  **Print**.

With Macintosh OS 9.x, you see the printer settings window. Click **Print**.

With Macintosh OS X, you see the printer settings window. Select **Print Settings** from the Copies & Pages pull-down menu. Then select your Media Type (EPSON printers only) and other print settings as necessary, and click **Print**.

Other Film Factory Features

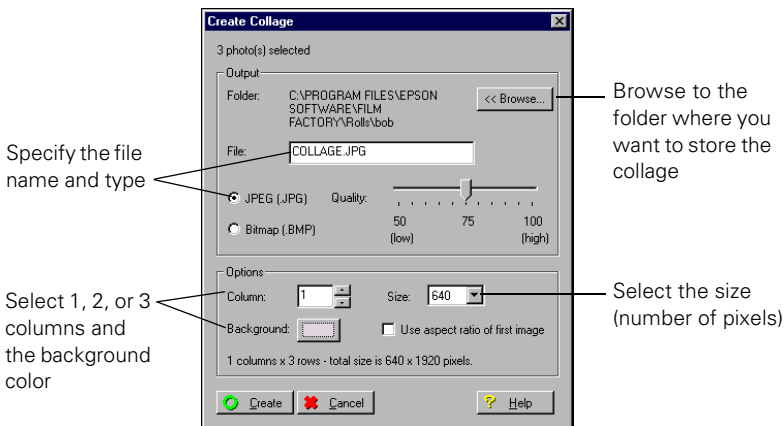
Film Factory includes several other features that are fun and productive. You can:

- Create a photo collage
- Create a photo slide show
- Play a movie file
- Create web pages of your photos
- Use a photo as your desktop wallpaper (Windows only)
- Create a screen saver (Windows only)
- Export photos to a file or to e-mail (Windows only for e-mail)

Creating a Collage

Follow these steps to create a collage of two or more photos:

1. From the Main menu, select the photos you want to be in the collage.
2. Click the **Export** button and select **Create Collage**. You see this window:



3. Enter the filename, file type, (JPEG, PICT, or Bitmap) and other information for the collage.
4. When you are ready, click **Create** (Windows) or **Merge** (Macintosh). You see the new collage image in your roll.

Creating a Photo Slide Show

1. From the Main Menu, select the roll and then the photos you wish to include in your slide show. If you want to select all photos in a roll, click **All**.
2. Click the **Viewer** button and select **Slide**. The Slide Show window appears.
3. Check the **Auto Change** box and enter the number of seconds for each photo to display.
4. Check **Auto Repeat** if you want to continuously cycle through the photos until you press **Esc**. Otherwise, the slide show ends when all of the photos have been displayed.
5. Click **Run** to begin. You can also use the left and right arrow keys on your keyboard to move backward and forward through your photos.

Playing a Movie File

As long as QuickTime 4 (or higher) is installed on your computer, you can play QuickTime, DV, MPEG, and AVI movie files in Film Factory. Just select the movie file and then select **Play Movie** from the View menu.

Creating Web Pages of Your Photos

1. From the Main Menu, select the roll and then the photos you want to use in your web pages. If you want to select all photos in a roll, click **All**.
2. Click the **Export** button and select **Web Format**. The Web Export Settings window appears.
3. Select the Export Folder where you want to store the web pages.
4. Make your Index Page settings for the main document that contains all of the photo thumbnails.
5. Make your Photo Page settings for the pages that display larger images when you click on the thumbnails.
6. Click **OK**. Creating the web pages may take a few minutes.

You can view your web pages with your browser and repeat the process if you wish to add or remove photos or make other types of changes. To post your photos on the web, use your usual method of transferring web pages to your web site.

Uploading Photos

You can use Film Factory to upload your photos to the EPSON PhotoCenterSM or an FTP site. The EPSON PhotoCenter (at <http://photo.epson.com>) is EPSON's exciting photo-sharing site where you can display and print your work, see what other photographers are doing, and learn more about digital photography (not available with OS X).

At the EPSON PhotoCenter, you can:

- Store and organize your photos online in password protected albums
- Share your photos with family and friends
- Print high resolution photos straight from the web on your EPSON printer
- Create free online postcards with your photos

Follow these steps to upload photos to the EPSON PhotoCenter or an FTP site:

1. Select the roll and then the photo(s) you want to upload. If you want to select all photos in a roll, click **All**.
2. Click the **Export** button and select **Web Upload**.
3. Select **Epson PhotoCenter** or **FTP**.
4. For the EPSON PhotoCenter, type your User Name and Password. If you have not already created an account, click **Create New Account** and follow the instructions to sign up for a new account on the web.

For an FTP site, enter the FTP address, your username, and password.

5. Click **Upload**.

Converting a Photo to Desktop Wallpaper

If you are using Windows, you can turn a photo into wallpaper for your desktop. (This option is not available on the Macintosh.)

1. Select the roll and then the photo you want to save as wallpaper. (Choose only one photo; if you select more than one, only your first selection is used.)
2. Click the **Export** button and select **Wallpaper**. The Export Wallpaper window appears.
3. Check **Save to 256 colors** if you wish to convert your photo to 256 colors. This saves memory, but the colors in your photo may be less vibrant.
4. Click **OK**. The photo is saved in the Windows folder and applied to your desktop.

Using a Photo Roll as a Screen Saver

If you are using Windows, you can use one or more rolls of photos as your screen saver.

1. Right-click on your desktop and click **Properties**.
2. Click the **Screen Saver** tab and select **Film Factory** from the Screen Saver drop-down list.
3. Click the **Settings** button. On the **Select Rolls** tab, check the boxes for the film rolls you want to include in the screen saver. On the **Preferences** tab, specify how you want the screen saver to behave.
4. Click **OK** twice to close the Settings and Screen Saver windows.

Exporting Photos to Files or E-mail

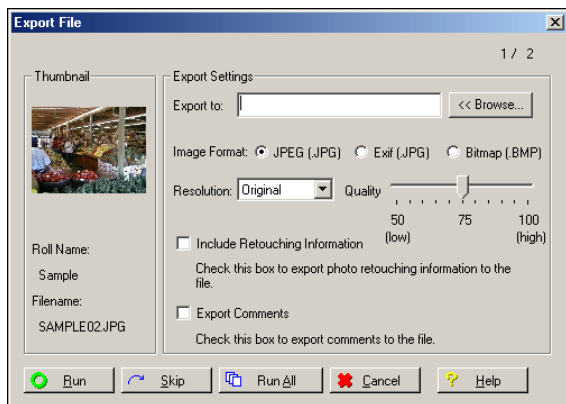
You may need to convert a photo to another file type or change its compression for use in another application. You can do this in Film Factory with the Export option. This option also lets you e-mail your photos to other people if you are using Windows.



If you export a PRINT Image Matching or Exif Print photo, the exported file will not include the PRINT Image Matching or Exif Print data.

Exporting a file in another format

1. Select the roll and then the photo(s) you want to convert.
2. Click the **Export** button and select **To File**. You see this window:



3. Enter the folder where you want to export the file (or click **Browse** to find it).
4. Select the image format you want for the exported file(s) (JPEG, Exif, PICT, or Bitmap), and the resolution, quality, and other export settings.
5. When you are ready, click **Run** or **Run All** to convert the file(s).

E-mailing a photo (Windows only)

1. First select the e-mail program you want to use: From the File menu, select **Preferences** and then click the **Mail** tab. Select the program you want and click **OK**.
2. Connect to your internet service provider or network.
3. Select the roll and photo(s) you want to e-mail.
4. Click the **Export** button and select **Send Mail**. Your e-mail program should start and your photos should appear as attachments.
5. Use your program as you normally do to e-mail your photos.

Where to Get Help

If you've tried online Help, checked this guide, and still have questions, then contact EPSON at our website:

<http://support.epson.com>

Be sure to visit www.epsonsoftware.com occasionally to check for new Film Factory releases.