

Printer Basics

EPSON[®]
EPSON STYLUS[®] COLOR
660



EPSON®
EPSON STYLUS® COLOR
660

Printer Basics



Printed on recycled paper with at least 10% post-consumer content.

Copyright Notice

All rights reserved. No part of this publication may be reproduced, stored in a retrieval system, or transmitted in any form or by any means, electronic, mechanical, photocopying, recording, or otherwise, without the prior written permission of SEIKO EPSON CORPORATION. The information contained herein is designed only for use with this EPSON printer. EPSON is not responsible for any use of this information as applied to other printers.

Neither SEIKO EPSON CORPORATION nor its affiliates shall be liable to the purchaser of this product or third parties for damages, losses, costs, or expenses incurred by purchaser or third parties as a result of: accident, misuse, or abuse of this product or unauthorized modifications, repairs, or alterations to this product, or (excluding the U.S.) failure to strictly comply with SEIKO EPSON CORPORATION's operating and maintenance instructions.

SEIKO EPSON CORPORATION shall not be liable for any damages or problems arising from the use of any options or any consumable products other than those designated as Original EPSON Products or EPSON Approved Products by SEIKO EPSON CORPORATION.

Trademarks

EPSON and EPSON Stylus are registered trademarks of SEIKO EPSON CORPORATION.

SoundAdvice is a service mark and EPSON FaxAdvice, Micro Piezo, and PhotoEnhance are trademarks of Epson America, Inc.

General Notice: Other product names used herein are for identification purposes only and may be trademarks of their respective owners. EPSON disclaims any and all rights in those marks.

The ENERGY STAR emblem does not represent EPA endorsement of any product or service.

Contents

WELCOME!	1
About Your Software	2
About Your Documentation	3
Warnings, Cautions, Notes, and Tips	3
System Requirements	4
ENERGY STAR Compliance	4
Year 2000 Ready	5
Important Safety Instructions	5
Ink Cartridge Safety Instructions	6
VIEWING YOUR ELECTRONIC PRINTER MANUAL	7
Accessing Your Electronic Printer Manual	7
Navigating Your Electronic Printer Manual	8
PRINTING FROM START TO FINISH	11
Using the EPSON Guided Printing Exercise	11
Printing with Windows	12
Loading Paper	12
Opening the Printer Software	13
Selecting Your Printer Software Settings	14
Controlling Printing	16
Printing Photographs	17
Using Custom Project Types	18
Using Advanced Settings	20

Using Special Papers	22
EPSON Photo Quality Ink Jet Paper	22
EPSON Photo Paper	22
Envelopes	25
Selecting the Correct Media Type	26

MAINTAINING YOUR PRINTER **27**

Cleaning the Print Head	27
Using the Head Cleaning Utility	28
Using the Control Panel	29
Examining the Nozzle Check Pattern	30
Replacing an Ink Cartridge	31
Removing and Installing Ink Cartridges	32
Replacing an Outdated Ink Cartridge	34
Aligning the Print Head	37
Cleaning the Printer	38
Transporting the Printer	39

PROBLEM SOLVING **41**

Diagnosing Printer Problems	41
Checking the Control Panel Lights	41
Running a Printer Check	43
Printer Parts	44

Problems and Solutions	45
Solving Problems Setting Up the Printer or Installing Its Software	45
Solving Problems with Printing	46
Solving Problems Getting Good Print Quality	47
Solving Problems with Paper Feeding	50
Solving Miscellaneous Printout Problems	51
Uninstalling Printer Software	52
Reinstalling Printer Software	52
Where To Get Help	53
EPSON Technical Support	53
Creative Software Technical Support	54

INDEX	55
--------------	-----------

Welcome!

Your EPSON Stylus® COLOR 660 printer is the ideal output device for small office or home printing. You can print anything from reports and resumes to photos and greeting cards with great results.

The printer comes with these features:



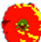
- Resolutions up to 1440 by 720 dpi (dots per inch), even on plain paper
- EPSON's exclusive Micro Piezo™ ink jet technology for smaller, cleaner dots
- Four-color printing for photo-quality color and sharp black text on plain paper or a variety of special media
- Great results on any paper size, including letter, legal, envelope, card, and panoramic paper
- Creative software for implementing all your ideas for business or home

About Your Software

The printer software CD-ROM includes all the software you need for printing:

- Your printer driver runs your printer and lets you control how your documents look. You can't use your printer without it.
- Your creative software, including:
 - The EPSON Guided Printing Exercise, a quick step-by-step guide to changing your printer software settings
 - Polaroid® PhotoMAX™ Pro, a full-featured image editing program
 - ArcSoft™ PhotoPrinter™ SE, a photo layout program
 - eFax™, a program that allows you to send and receive faxes directly from your PC (trial version)
 - EPSON Software™ Film Factory™, a photo printing and organizing program (trial version)
- Your electronic *EPSON Stylus COLOR 660 Reference Guide* gives you complete information about your printer. (You need an HTML browser—such as Internet Explorer 3.0 or later, or Netscape® Navigator® 3.0 or later—to view the guide.)

If you haven't yet installed your printer software from your CD-ROM, see *Start Here* for instructions.

If you need to rerun the installation program, insert the CD-ROM, double-click  My Computer, double-click your  CD-ROM drive icon, then double-click the  EPSON icon.

About Your Documentation

To set up your printer and install its software, see the *Start Here* card. This book contains system requirements, important safety information, and instructions on:

- viewing your electronic printer manual
- printing with Windows
- maintaining the printer
- solving basic problems

For more details about printing with, maintaining, or troubleshooting your printer, see your electronic *EPSON Stylus COLOR 660 Reference Guide*. For instructions on viewing it, see page 7.

Warnings, Cautions, Notes, and Tips

Please follow these guidelines:



Warnings must be followed carefully to avoid bodily injury.



Cautions must be observed to avoid damage to your equipment.



Notes contain important information about your printer.



Tips contain additional hints for better printing.

System Requirements

To use your printer and its software, your system should have:

- An IBM® compatible PC with at least a 486/66 MHz (for Windows® 98) or 486/25 MHz (for Windows 95 or Windows NT® 4.0) processor (Pentium® processor recommended)
- Microsoft® Windows 95, Windows 98, or Windows NT 4.0
- At least 16MB of RAM (32MB for Windows 95 or 98, or 64MB for Windows NT 4.0 recommended)
- At least 50MB of free hard disk space (100MB recommended)
- VGA, Super VGA, or better display adapter and monitor
- Double-speed (2x) CD-ROM drive (quad-speed [4x] or faster recommended) for installing the printer software
- A high-speed, bidirectional, IEEE-1284 compliant parallel cable (6 to 10 feet long); the cable must have a D-SUB, 25-pin, male connector for your computer and a 36-pin, Centronics® compatible connector for the printer

If you want to use your EPSON Stylus COLOR 660 with Windows 98 USB or a Macintosh® with a built-in USB port, an optional USB/Parallel Adapter kit is available. You can purchase the kit from EPSON Accessories at (800) 873-7766 or visit our website at www.epsonsupplies.com (U.S. sales only). In Canada, please call (800) 873-7766 for dealer referral. The Macintosh printer driver and EPSON USB Printer Device and Windows 98 USB drivers are included on the CD-ROM that comes with your printer.

ENERGY STAR Compliance

As an ENERGY STAR Partner, EPSON has determined that this product meets the ENERGY STAR guidelines for energy efficiency. The EPA ENERGY STAR office equipment program is a voluntary partnership with the computer and office equipment industry to promote the introduction of energy-efficient personal computers, monitors, printers, fax machines, and copiers in an effort to reduce air pollution caused by power generation.



Year 2000 Ready


Your EPSON printer is Year 2000 Ready. However, be sure the other parts of your computer system are also ready for the year 2000.

Important Safety Instructions

Before using your printer, read the following safety instructions to make sure you use the printer safely and effectively:

- Be sure to follow all warnings and instructions marked on the printer.
- Turn off and unplug the printer before cleaning. Clean with a damp cloth only. Do not spill liquid on the printer.



Always turn the printer off using the  power button. Don't switch off the power strip, or unplug the printer until the power light is off.

- Do not place the printer on an unstable surface or near a radiator or heating vent or direct sunlight.
- Do not block or cover the openings in the printer's case or insert objects through the slots.
- Use only the type of power source indicated on the printer's label.
- Connect all equipment to properly grounded power outlets. Avoid using outlets on the same circuit as photocopiers or air control systems that regularly switch on and off.
- Place the printer near a wall outlet where the plug can be easily unplugged.

Placez l'imprimante près d'une prise de contact où la fiche peut être débranchée facilement.

- Do not let the power cord become damaged or frayed.

- If you use an extension cord with the printer, make sure the total ampere rating of the devices plugged into the extension cord does not exceed the cord's ampere rating. Also, make sure the total ampere rating of all devices plugged into the wall outlet does not exceed the wall outlet's ampere rating.
- Except as specifically explained in this manual, do not attempt to service the printer yourself.
- Unplug the printer and refer servicing to qualified service personnel under the following conditions:

If the power cord or plug is damaged; if liquid has entered the printer; if the printer has been dropped or the case damaged; if the printer does not operate normally or exhibits a distinct change in performance. Adjust only those controls that are covered by the operating instructions.

Ink Cartridge Safety Instructions



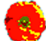
- Install the ink cartridge immediately after you remove it from its foil package. Leaving the cartridge unpacked for a long time before use may result in reduced print quality.
- Do not put your hand inside the printer or touch the cartridge during printing.
- Under normal circumstances, ink will not come out of the cartridge. If it does get on your skin, wash it off with soap and water. If it gets in your eyes, flush them immediately with water.
- Keep ink cartridges out of the reach of children.
- Do not dismantle the ink cartridges or try to refill them. This could result in damage to the print head.
- Once you install an ink cartridge, do not open the clamp or remove the cartridge except to replace it with a new one. The cartridge may become unusable otherwise.
- Do not use an ink cartridge beyond the date printed on the cartridge package. For best results, use up the ink cartridges within six months of installing them.
- Do not shake an ink cartridge; this can cause leakage.
- Do not move the print head by hand; otherwise you may damage the printer.
- Before transporting the printer, make sure the print head is capped in the far right position and the ink cartridges are in place.

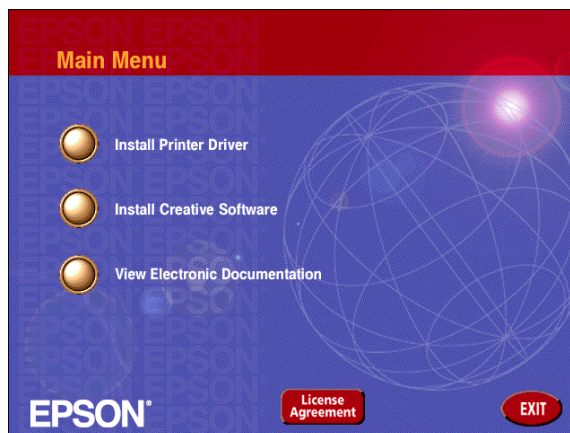
Viewing Your Electronic Printer Manual

Your printer software CD-ROM includes an electronic *EPSON Stylus COLOR 660 Reference Guide*. The manual is in HTML format so you need a browser—such as Internet Explorer 3.0 or later or Netscape Navigator 3.0 or later—to view it. If you are using a different browser, the pages may not display correctly. (Browsers are not included on the printer software CD-ROM.)

Accessing Your Electronic Printer Manual

You can view your electronic *EPSON Stylus COLOR 660 Reference Guide* from the CD-ROM or copy it to your hard drive and view it from there. Follow these steps:

1. Insert your printer software CD-ROM.
2. Double-click  My Computer, double-click  your CD-ROM drive icon, then double-click the  EPSON icon. The installer Main Menu appears:



3. Click View Electronic Documentation.
The following screen appears:
4. You can either view the manual from the CD-ROM (View Reference Guide) or copy the manual to your hard drive (Install Reference Guide) and view it from there.

If you copy the manual to your hard drive, you can access it at any time by clicking Start, Programs, EPSON, and selecting ESC 660 Manual.



For guidelines on viewing the manual, see the next section.

Navigating Your Electronic Printer Manual

Here are some guidelines for viewing the *Reference Guide*. When you first open the manual, you see this screen:



Click a topic on the left to expand the table of contents.

After expanding the table of contents, you can click on the topic you want to view.

The screenshot shows the EPSON Stylus Color 660 Reference Guide. The left sidebar is expanded, showing a list of topics under 'Printing with Windows'. The main content area displays the 'Using the Printer Utilities' page, which includes a list of utility options and instructions on how to use them.

Expanded table of contents; click here to go to a topic

- [Printing with Windows](#)
 - [Printer Software Introduction](#)
 - [Making Changes to Printer Driver Settings](#)
 - [Using the Printer Utilities](#)
 - [Getting Information Through Online Help](#)
 - [Increasing the Print Speed](#)
 - ▶ [Checking Printer Status and Managing Print Jobs](#)
- [Printing with Macintosh](#)
- [How To](#)
- [Problem Solver](#)
- [Product Information](#)

Printing with Windows


Using the Printer Utilities

- ▼ [Status Monitor 3](#)
- ▼ [Nozzle Check](#)
- ▼ [Head Cleaning](#)
- ▼ [Print Head Alignment](#)
- ▼ [Speed & Progress](#)
- ▼ [Monitoring Preferences](#)

EPSON printer utilities allow you to check the current printer status and to perform some printer maintenance from your computer screen.

To use the utilities, click the **Utility** tab in the printer software window, then click the button for the utility you wish to use. For information on how to access the printer software, see [Accessing the printer software](#).

Click the right arrow  to view subtopics.

Click on a topic to go to it or click the down arrow  to close the list.

The screenshot shows the EPSON Stylus Color 660 Reference Guide. The left sidebar is collapsed, showing only the main categories. The main content area displays the 'Follow these steps to load plain paper in the printer' page, which includes a numbered list of instructions and a corresponding diagram.

Closed list, click to expand

Click to go to topic

- [Printing with Windows](#)
- [Printing with Macintosh](#)
- [How To](#)
 - ▶ [Paper Handling](#)
 - ▶ [Setting Up Your Printer on a Network](#)
 - ▶ [Replacing Ink Cartridges](#)
 - ▶ [Maintenance](#)
 - ▶ [Checking the Print Head](#)
 - ▶ [Nozzles](#)
 - ▶ [Cleaning the Print Head](#)
 - ▶ [Aligning the Print Head](#)
 - ▶ [Cleaning the Printer](#)
 - ▶ [Transporting the Printer](#)
 - ▶ [Updating Software](#)
- [Problem Solver](#)

Follow these steps to load plain paper in the printer.

- 1 Lower the output tray and slide out the extension. Next, slide the left edge guide so that the distance between the edge guides is slightly wider than the width of your paper.
- 2 Fan a stack of paper, then tap it on a flat surface to even the edges.
- 3 Load the stack of paper with the printable side up and the right edge of the paper resting against the right side of the sheet feeder. Then slide the left edge guide against the left edge of the paper.

Printing from Start to Finish

Here's what you need to do to print a basic document—such as a memo, newsletter, or photograph—from loading the paper to selecting print settings to controlling print jobs. Follow the step-by-step instructions in this chapter. You can even practice selecting settings using the EPSON Guided Printing Exercise, as described below.




If you're already familiar with ink jet printing, you can skip ahead to these sections:

- Selecting custom project types with preset options for printing specific reports, graphs, or drafts, or selecting a color-matching method, page 18
- Fine-tuning your settings for maximum control of your printouts, page 20
- Using special papers such as EPSON Photo Paper or envelopes, page 22

Using the EPSON Guided Printing Exercise

Your printer software CD-ROM includes a Guided Printing Exercise with step-by-step printing instructions. The Guided Printing Exercise shows you how to access your printer driver and make changes to your printer settings.

If you didn't install the Guided Printing Exercise when you set up your printer, you can install it now. Follow these steps:

1. Insert the printer software CD-ROM.
2. Double-click  My Computer, double-click your  CD-ROM drive icon, then double-click the  EPSON icon. The installer Main Menu appears.
3. Click Install Creative Software, then click EPSON Guided Printing Exercise.

To run the exercise, click the  EPSON Guided Printing Exercise icon on your desktop. Then follow the on-screen instructions to print a full-color image.

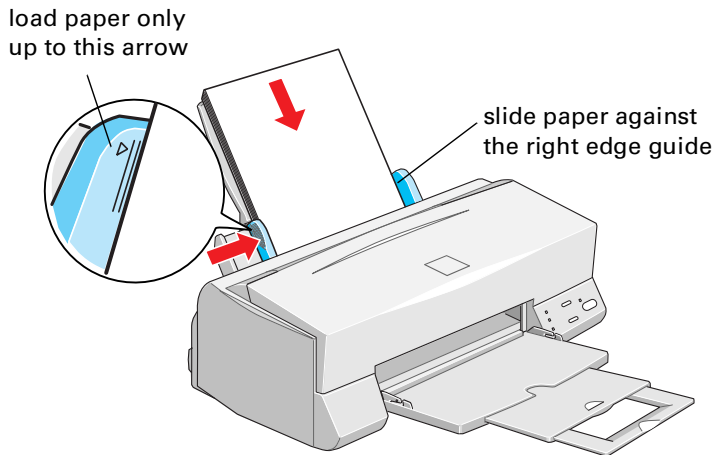
Printing with Windows

This section describes these basic printing steps:

- loading paper
- opening the printer software
- changing settings
- controlling printing

Loading Paper

Make sure your printer and computer are turned on. Place your paper against the right edge guide and slide the left edge guide against the paper's left edge.

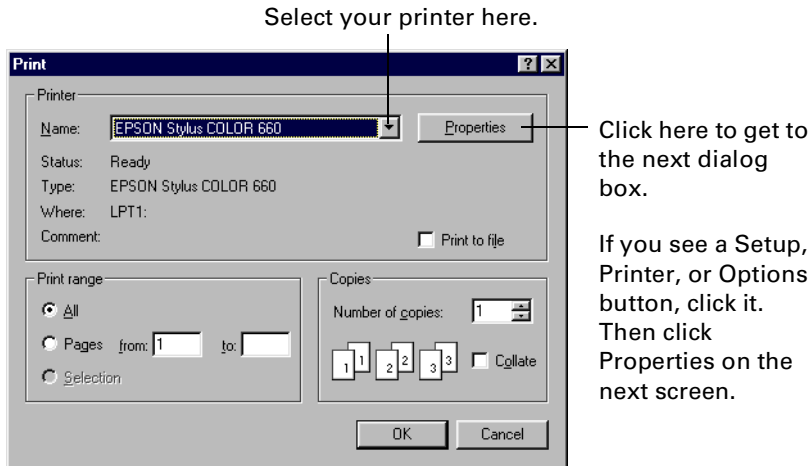


Keep the following in mind when loading paper:

- Load the printable side face up. The printable side is usually whiter or brighter.
- Load letterhead or preprinted paper so the top of the paper feeds into the printer first.
- Don't load paper above the arrow on the left edge guide.
- If you are printing on envelopes or paper that isn't letter-size, see pages 22 through 25 for loading instructions.

Opening the Printer Software

After you create your document and load your paper, you're ready to change your printer driver settings. Make sure the document you want to print is open and then, from the File menu, click Print. You see the Print dialog box for your application (your Print dialog box may look slightly different):



Make the following selections on the Print dialog box:

- Make sure EPSON Stylus COLOR 660 is selected.
- If your application's Print dialog box contains a Properties button, click it.

If you see a Setup, Printer, or Options button, click it. Then click Properties on the next screen.

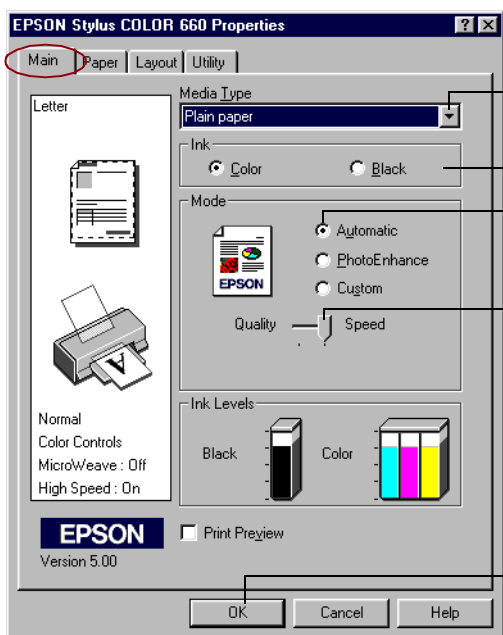


If you click the print icon on your application's tool bar instead of selecting Print from the File menu, you may not get the option to change the printer driver settings for your print job.

Selecting Your Printer Software Settings

The most important thing to remember is to set the correct Media Type for the paper you are using. The Media Type setting affects the other options you can choose in your printer driver.

You can select the Media Type setting on the printer Properties dialog box. If necessary, click the Main tab to display the settings shown below:



EPSON Stylus COLOR 660 Properties

Main Paper Layout Utility

Letter

Media Type: Plain paper

Ink: Color Black

Mode: Automatic PhotoEnhance Custom

Quality Speed

Ink Levels: Black Color

Normal
Color Controls
MicroWeave : Off
High Speed : On

EPSON Version 5.00

Print Preview

OK Cancel Help

Make sure this setting matches the paper you loaded (see page 26).

Select your Ink setting.

Select Automatic for the best results on your paper.

Select between faster or higher-quality printing.

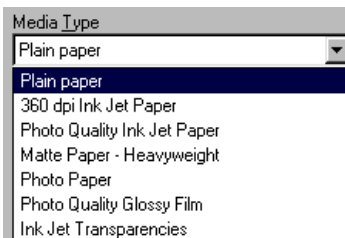
Click OK to return to the Print dialog box.

Make the following settings on the Properties dialog box:

- Choose the Media Type you are printing on (click the arrow button to scroll through the list).

If you are not sure which setting to select, see “Selecting the Correct Media Type” on page 26. For instructions on loading special paper, see page 22.

- Make sure Ink is set to Color if you want to print in color. To print a black text document, click Black.



- Set the Mode option to Automatic. This lets the printer software determine the best settings for your print job. It's the easiest way to get good printing results on all types of paper.
- Set the slider in the Mode box to Quality or Speed. This lets you choose between a higher resolution or faster printing for the media you're using. (The slider is not available when certain media types are selected.)



For more information about printer settings, click the Help button. Or you can right-click any item on the screen and then click What's This?.

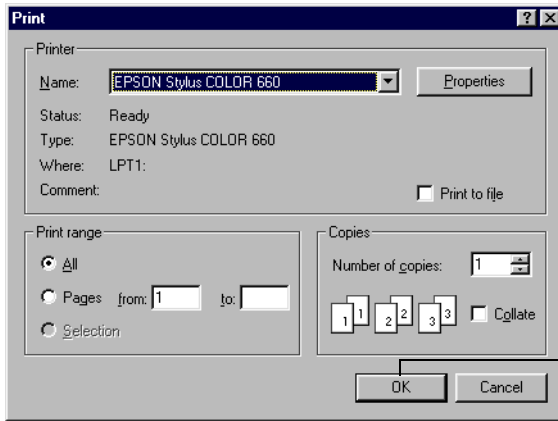
The printer settings you make apply only to the application you're currently using. If you usually print one type of document—for example, black ink on legal size paper—you can change the default printer settings. You do this by accessing the Properties dialog box through the Printer utility:

1. Click Start, point to Settings, and then select Printers.
2. Right-click the EPSON Stylus COLOR 660 icon.
3. Select Properties (Document Defaults in Windows NT). Then click the Main tab.
4. Any changes you make will become the default settings for all your applications and documents. Click OK when you're finished.

You can also save the settings as a custom project type; see page 20 for instructions.

Controlling Printing

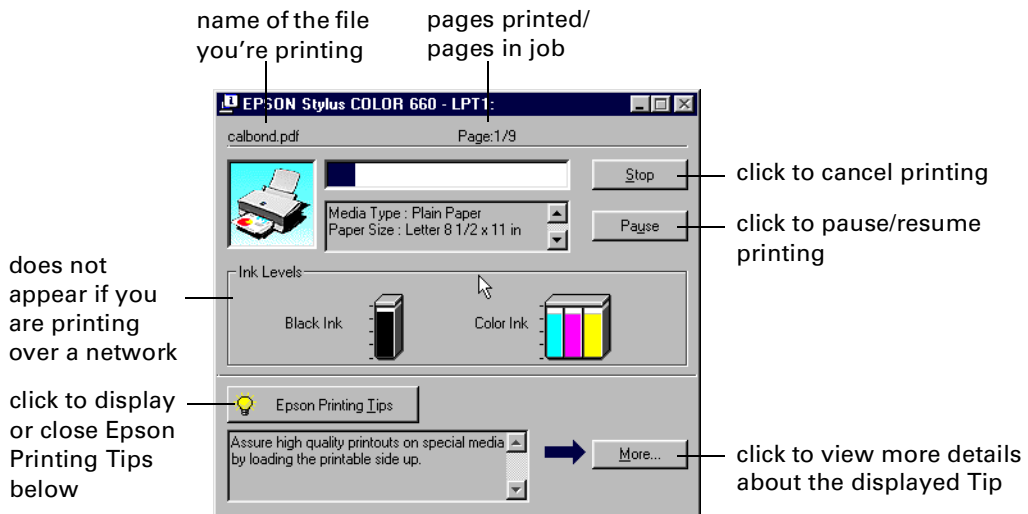
Click OK to return to your application's Print dialog box, shown below.



click OK to start printing

Click OK (or Print, depending on your application) to start printing.

After a moment, the Progress Meter appears and shows the progress of your print job. You can use the buttons to cancel, pause, or restart your print job. You can also see how much ink you have left and view printing tips.



For more advanced printer settings, see pages 17 through 21.

For more information on printing—for example, previewing your printout, changing the paper size, or adding a watermark—see the electronic *EPSON Stylus COLOR 660 Reference Guide*. See page 7 for instructions on viewing the manual.

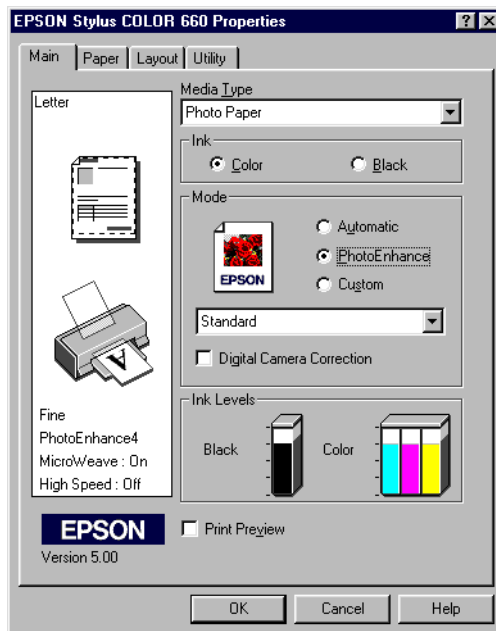
Printing Photographs

The printer driver includes PhotoEnhance™ options that can increase brightness and contrast to improve the appearance of low-resolution images. You can also add special effects such as Soft Focus. If you used photo editing software to increase your image's resolution or if you have high-resolution images, you may want to use the Automatic setting instead.

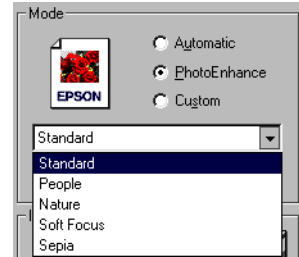
PhotoEnhance does not affect your original image; it only affects your printout. Printing with PhotoEnhance may take longer on some systems and images.

Follow these steps:

1. Create your image or document in your application software.
2. Access the printer Properties dialog box as described on page 13. You see this dialog box:
3. Choose the Media Type you want to print on. (If you're not sure which setting to select, see "Selecting the Correct Media Type" on page 26.)
4. Choose Color ink. (You cannot select PhotoEnhance in the next step if Black ink is selected.)
5. Click PhotoEnhance.
6. If your photograph was taken with a digital camera, you can click the Digital Camera Correction box. This gives your printed images the appearance of photographs taken with a film camera.



7. For more fine tuning, click Standard. You see a list of specialized settings for photographs. Select the setting that most closely matches your photograph (People or Nature) or select one of the special filters (Soft Focus or Sepia). You may need to experiment with these settings to get the exact look you want, especially if you have multiple images on a page.



You can also make detailed settings on the Advanced dialog box to fit your individual needs, as described on page 20.

8. If you need to change your paper size, number of copies, orientation, and printable area, click the Paper tab. (You can often make these settings in your application software. If so, you should make the changes there.)
9. If you need to reduce or enlarge the image (proportional printing), print multiple pages on a single sheet, “tile” an image to make a large poster, or add a watermark, click the Layout tab. (You can often make these settings in your application software. If so, you should make the changes there.)
10. Click OK to return to your application’s Print dialog box.
11. Click OK (or Print, depending on your application) to start printing. (Depending on your system and the image, printing with PhotoEnhance may take longer.)

Using Custom Project Types

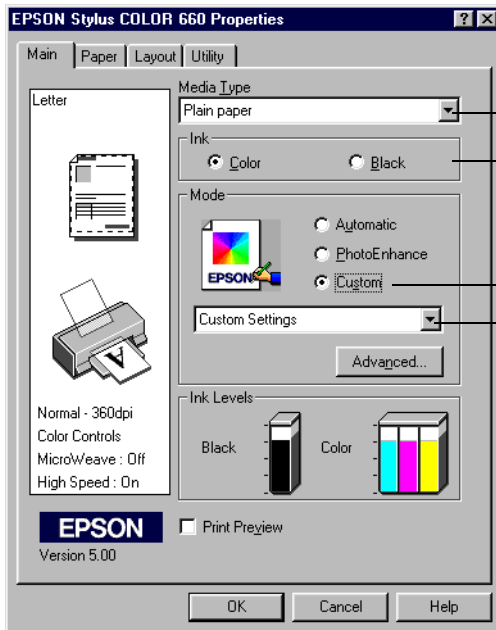
Your EPSON Stylus COLOR 660 printer software includes custom project types with preset options for printing specific types of documents—such as reports, graphs, or drafts. You can also select a color-matching method. These custom project types let you quickly select the best settings for your particular type of document and paper.

You can also make settings on the Advanced dialog box to fit your individual needs, as described on page 20.

Follow these steps to print with custom project types:

1. Create your image or document in your application software.
2. Access the printer Properties dialog box as described on page 13.

3. Choose the Media Type you want to print on. (If you're not sure which setting to choose, see "Selecting the Correct Media Type" on page 26.)
4. Choose Color or Black ink.
5. Click Custom, and then click Custom Settings. You see the list of project types.



Always choose your Media Type and Ink settings before you select a custom project type. Some project types may not be available with the Media Type or Ink settings you choose.

Click Custom, then click here to see a list of project types.

6. Choose a setting for your project following these guidelines (remember that these settings are restricted by the Media Type and Ink settings):
 - Text/Graph: For printing graphics-intensive documents like presentations with charts and graphs.
 - Economy: For printing rough drafts of text on plain paper. Saves ink.
 - ICM (Image Color Matching; Windows 95 and Windows 98 only): For printing documents created in an ICM compatible application.
 - sRGB (standard Red Green Blue; recommended only with Windows 98): For printing documents created in an sRGB compatible application using sRGB colors, such as those designed for the World Wide Web. See your Windows 98 online help for details.

7. If you need to change your paper size, number of copies, orientation, and printable area, click the Paper tab. (You can often make these settings in your application software. If so, you should make the changes there.)
8. If you need to reduce or enlarge the image (proportional printing), print multiple pages on a single sheet, “tile” an image to make a large poster, or add a watermark, click the Layout tab. (You can often make these settings in your application software. If so, you should make the changes there.)
9. Click OK to return to your application’s Print dialog box.
10. Click OK (or Print, depending on your application) to start printing.

Using Advanced Settings

For maximum control over your project, you can customize your print settings and special effects. You can even save your custom settings as a group so you can use them whenever you print a similar project.

To access the Advanced dialog box, follow these steps:

1. Create your image or document in your application software. Then access the printer Properties dialog box as described on page 13.
2. Select your Media Type and Ink settings.

3. Click Custom, and then click the Advanced button. You see the Advanced dialog box:

Click here to change your Print Quality (resolution)

Some of these options are automatically set or disabled by other settings you choose

Changes depending on the Color Management setting selected above

4. Check the Media Type and Ink settings. These settings are the same as the ones you selected on the Main dialog box. You can change them here as you customize your settings, if needed.
5. Choose a Print Quality setting.
6. Select a color management system (the availability depends on your operating system).



After you customize your print settings for a special project, you can save them as a group. Then you can reuse them whenever you print a similar project. Click Save Settings in the Advanced dialog box. Type a name for your setting group and click OK.

7. Select any other settings you need to change.
8. Click OK to return to your application's Print dialog box.
9. Click OK (or Print, depending on your application) to start printing.

For more information about the settings described in this section, see your electronic *EPSON Stylus COLOR 660 Reference Guide*.

Using Special Papers

How can you get the best-looking photos, most vivid colors, and sharpest text? Always use EPSON's special ink jet papers. To show you how much difference EPSON paper can make, we've included some free samples.

Check out the EPSON Photo Quality Media Pack that came with your printer. Instructions for printing on the samples, along with other papers, are given in the following sections.

For a list of EPSON special ink jet papers and ordering information, see the inside back cover.



EPSON Photo Quality Ink Jet Paper

EPSON Photo Quality Ink Jet Paper is great for presentation materials and newsletters. Load it as described on page 12. Before you print, be sure to select Photo Quality Ink Jet Paper as the Media Type.

EPSON Photo Paper

You can use EPSON Photo Paper to print photographs that look almost as good as the ones you get from film processing. EPSON 4 × 6-inch Photo Paper is micro-perforated around the edges so you can trim your printouts and “bleed” the photo—extend it to the edge of the paper—on all sides. Photo Paper is available in a variety of sizes; see the inside back cover for a list and ordering information.

Keep the following in mind when using EPSON Photo Paper:

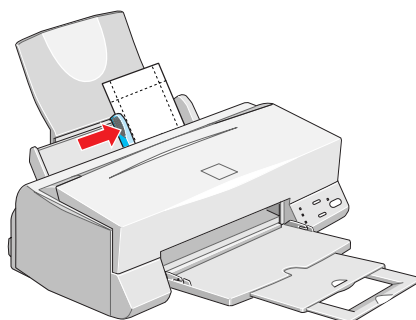
- Always load the paper with the whiter (glossier) side facing up.
- Load up to 20 sheets of 4 × 6-inch, letter-size, or A4-size Photo Paper or 1 sheet of Panoramic paper. Use a support sheet if it is included in the paper package.
- To keep your printouts looking their best, store them in a resealable plastic bag or other airtight covering and protect them from heat, humidity, and direct sunlight. Return unused paper to the original package as soon as you finish printing.

If you're using letter-size or A4-size Photo Paper, follow the instructions starting on page 12 to load and print on the paper. Be sure to select Photo Paper as the Media Type setting. If you're using 4 × 6-inch or Panoramic Photo Paper, follow the steps in the next sections.

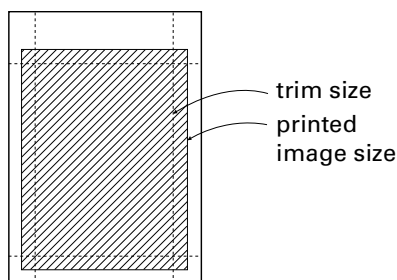
4 × 6-inch Photo Paper

1. Load the paper against the right edge guide with the glossy side facing up and the perforated margins positioned as shown:

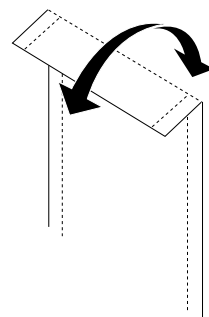
You can load up to 20 sheets of 4 × 6-inch Photo Paper at a time. Make sure you place the included support sheets A and B beneath the stack, but don't print on them. (If you don't have the support sheets, use plain paper cut to size.)




2. Slide the left edge guide against the left edge of the paper.
3. When you create the image in your application software, size it to 4.25 × 6.25 inches. You can also use your printer software's Reduce/Enlarge settings, as described in your *EPSON Stylus COLOR 660 Reference Guide*.

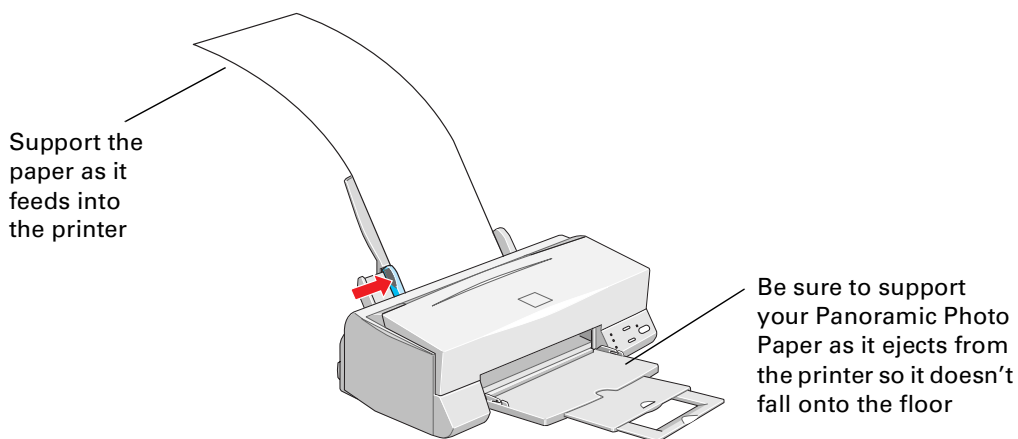


4. Choose Photo Paper as the Media Type setting.
5. Choose Photo Paper 4 × 6 in as the Paper Size setting and Maximum as the Printable Area setting on the Paper tab.
6. After you print your picture, fold the paper back and forth along the perforations and carefully tear the margins off.



Panoramic Photo Paper

1. Pull up the paper support extension. Load one sheet of Panoramic paper glossy side up, then hold up its top edge and press the  load/eject button to feed it into the printer.



2. Choose Photo Paper as the Media Type setting and Panoramic 210 × 594 mm for the Paper size setting.

Preserving Photos on EPSON Photo Paper

EPSON Photo Paper has been specially formulated to work with EPSON's ink to create prints that last as long as traditional photographs when protected from light in photo albums or similar archival conditions.

When you display your EPSON Photo Paper prints in picture frames or mounted on the wall, the paper provides extra UV (ultraviolet) light protection so your prints will last longer than prints on other ink jet photo papers. Depending on the type and intensity of the light your print is exposed to, a print on EPSON Photo Paper may last two or more years before noticeable fading occurs. Fade resistance could decrease in intense light conditions or increase if your print is protected by glass or special laminates.

For optimum results and longer print life, print your digital photos on EPSON Photo Paper. See the inside back cover of this manual for a list of available paper sizes.

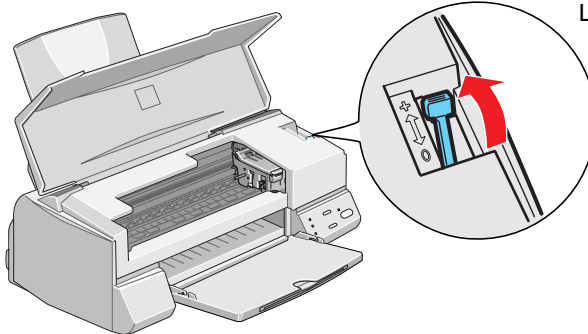
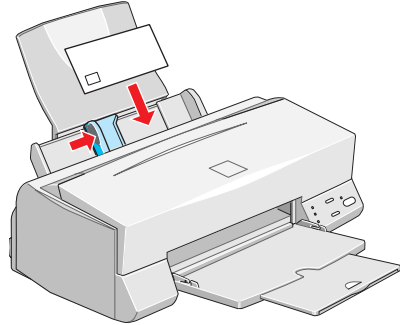
Envelopes

You can load up to 10 envelopes at a time. Load the envelope flap edge first and printable side up. Place it against the right edge guide and adjust the left edge guide as shown here.

You'll get better results if you press each envelope flat before loading it, or load one envelope at a time.

Select Plain paper as the Media Type and choose the correct envelope size as the Paper Size setting in the printer software.

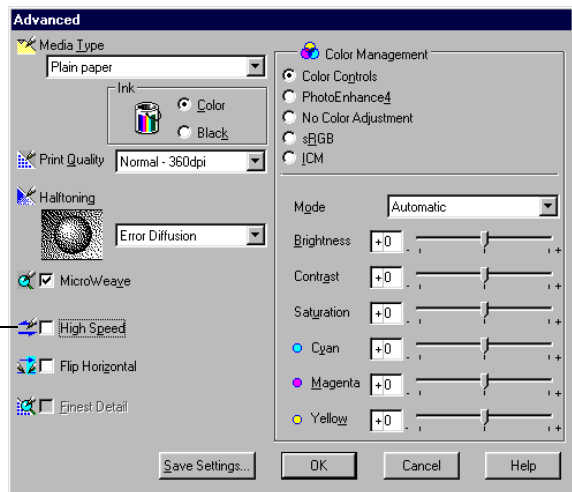
Set the thickness lever to the **+** position when you print on envelopes or other thick media, as shown here. (Make sure you return the lever to the **0** position before you print on regular media.)



Lever position for envelopes and thick paper

If the printing smears or you have banding (light lines), try turning off High Speed printing in the Advanced dialog box.

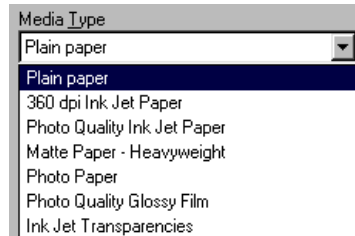
Make sure this option is unchecked



Selecting the Correct Media Type

Your printer automatically adjusts itself for the type of paper you select in your printer software. That's why the Media Type setting is so important. It tells your printer what kind of paper you're using and adjusts the ink coverage accordingly.

Before you print, always check your Media Type setting. Here are the settings you should choose for your paper:



For this paper . . .	Select this Media Type setting . . .
Plain paper sheets or envelopes	Plain paper
EPSON 360 dpi Ink Jet Paper EPSON Iron-On Cool Peel Transfer Paper	360 dpi Ink Jet Paper
EPSON High Quality Ink Jet Paper EPSON Photo Quality Ink Jet Paper EPSON Photo Quality Ink Jet Cards EPSON Photo Quality Self Adhesive Sheets	Photo Quality Ink Jet Paper
EPSON Photo Paper EPSON Photo Quality Glossy Paper	Photo Paper
EPSON Photo Quality Glossy Film EPSON Photo Stickers	Photo Quality Glossy Film
EPSON Ink Jet Transparencies	Ink Jet Transparencies
Matte Paper - Heavyweight	Matte Paper - Heavyweight



If any paper you buy comes with a cleaning sheet, don't use the cleaning sheet with this printer; it may jam inside the printer.

Maintaining Your Printer

This section describes the most common maintenance procedures you'll need to perform to keep your printer working at its best and to prepare it for moving. Just follow the instructions in this chapter for:

- cleaning the print head
- replacing an ink cartridge
- aligning the print head
- transporting the printer

For more details, see your electronic *EPSON Stylus COLOR 660 Reference Guide* as described on page 7.

Cleaning the Print Head

If your printed image is unexpectedly light or faint, or dots are missing from the image, you may need to clean the print head. This unclogs the nozzles so they can deliver ink properly.



When you don't turn on your printer for a long time, the print quality can decline. It's a good idea to turn on your printer at least once a month to maintain good print quality.

Cleaning the print head uses ink, so clean it only if print quality declines. You can clean the print head in either of the following ways:

- using the Head Cleaning utility in your printer software (when the printer is connected to a local port, not over a network), as described on page 28
- using the printer's control panel buttons, as described on page 29



Always wait until your document has finished printing before cleaning the print head.



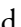
If any paper you buy comes with a cleaning sheet, don't use the cleaning sheet with this printer; it may jam inside the printer.

Using the Head Cleaning Utility


Follow these steps to run the Head Cleaning utility:

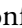
1. Make sure the printer is turned on but not printing, and both the  black and  color ink out lights are off. (If an ink out light is flashing, replace the ink cartridge before continuing.)
2. If you have an application running, access the printer settings dialog box as described on page 13.

Or click Start, point to Settings, then select Printers. Right-click the EPSON Stylus COLOR 660 icon in the Printers windows. Then select Properties (Document Defaults in Windows NT).

3. Click the Utility tab.
4. On the Utility menu, click the Head Cleaning button.
5. Follow the instructions on the screen to clean the print head. Cleaning takes a little over a minute, during which the printer makes some noise and the  power light flashes.



Never turn off the printer while the  power light is flashing, unless the printer hasn't moved or made noise for more than 5 minutes.

6. When the  power light stops flashing, run a nozzle check to confirm the print head nozzles are clean and reset the cleaning cycle.

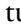
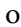
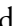
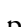
Make sure paper is loaded in the printer and click Print nozzle check pattern. Then click Next. The nozzle check pattern prints; see the next section for details.

7. If the nozzle check pattern is filled in completely, click Finish.

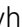
If the pattern is missing dots, click Clean to clean the print head again. If you don't see any improvement after cleaning three or four times, check the solutions in "Solving Problems Getting Good Print Quality" on page 47. You can also turn the printer off and wait overnight—this allows any dried ink to soften—and then try cleaning the print head again.


Using the Control Panel

Follow these steps to clean the print head:

1. Make sure the printer is turned on but not printing, and both the  black and  color ink out lights are off. (If an ink out light is flashing, replace the ink cartridge before continuing.)
2. Press the  cleaning button and hold it down for three seconds. Cleaning takes about a minute, during which the printer makes some noise and the  power light flashes.



Never turn off the printer while the  power light is flashing, unless the printer hasn't moved or made noise for more than 5 minutes.

3. After the  power light stops flashing, print a page to test the print quality and reset the cleaning cycle.

If your printer is connected directly to the computer, go to step 4 to run a nozzle check.

If you're printing over a network, open an application and print a small document containing black and color data. Then go to step 8.

4. If you have an application running, access the printer settings dialog box as described on page 13.

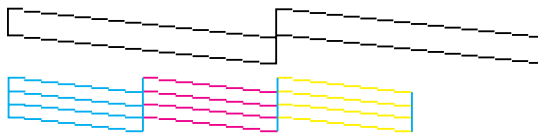
Or click Start, point to Settings, then select Printers. Right-click the EPSON Stylus COLOR 660 icon in the Printers windows. Then select Properties (Document Defaults in Windows NT).

5. Click the Utility tab. You see the Utility menu.

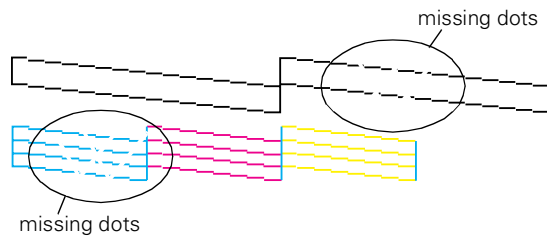
6. Make sure paper is loaded in the printer, click the Nozzle Check button, and click Next. The nozzle check pattern prints; see the next section for details.
7. If the nozzle check pattern has no gaps in its dots, click Finish.
If the pattern is missing dots, click Clean to clean the print head again.
8. If you don't see any improvement after cleaning three or four times, check the solutions in "Solving Problems Getting Good Print Quality" on page 47. You can also turn the printer off and wait overnight—this allows any dried ink to soften—and then try cleaning the print head again.

Examining the Nozzle Check Pattern



Examine the nozzle check pattern you print. It should look something like this:



Each staggered horizontal and straight vertical line should be complete, with no gaps in the dot pattern. If your printout looks okay, you're done. If any dots are missing, as shown below, clean the print head again; see page 27 for instructions.



Replacing an Ink Cartridge

When the  black or  color ink out light flashes, the indicated cartridge is low on ink. This is a good time to make sure you have a new cartridge. When the light stays on, the cartridge is empty and you need to replace it.



You cannot print if either ink cartridge is empty. Leave the empty cartridge installed in the printer until you have obtained a replacement. Otherwise the ink remaining in the print head nozzles may dry out.

Use these EPSON ink cartridges within six months of installing them and before the expiration date on the package:

- Black ink cartridge: S020187
- Color ink cartridge: S020191

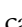
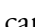


To ensure good results, use genuine EPSON ink cartridges and do not refill them. Other products may cause damage to your printer not covered by EPSON's warranty.

When you need new ink cartridges, contact your dealer or call EPSON Accessories at (800) 873-7766 or visit our web site at www.epsonsupplies.com (U.S. sales only). In Canada, please call (800) 873-7766 for dealer referral.


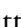
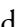
If you need to replace an ink cartridge before the lights flash (because the ink is too old, for example) follow the instructions in “Replacing an Outdated Ink Cartridge” on page 34.

Removing and Installing Ink Cartridges

You can replace a cartridge when the  black or  color ink out light is either flashing or on. (If you perform these steps when both ink out lights are off, the printer cleans the print heads as described on page 27.)

Be sure you have a new ink cartridge before you begin. Once you start the ink cartridge replacement procedure, you must complete all the steps in one session.

Follow these steps to replace ink cartridges:

1. Make sure the printer is turned on and not printing (the  power light should be on, but not flashing), then open the printer cover.
2. Press the  cleaning button and hold it for about three seconds until the print head moves slightly left and the  power light begins flashing.

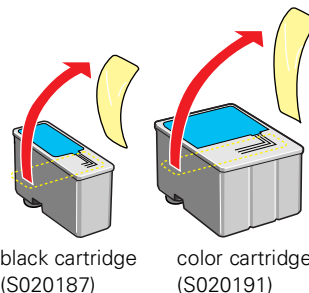


To avoid damaging the printer, never move the print head by hand. Don't open the clamp or remove a cartridge except to replace it with a new one. Once you remove a cartridge, you can't reuse it, even if it contains ink.

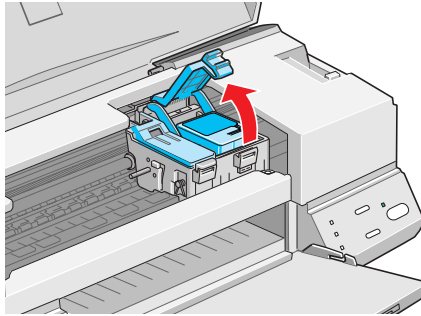
3. Unwrap the new ink cartridge.
4. Remove *only* the yellow part of the tape seal on top.



You must remove the yellow tape from the top of the cartridge or you will permanently damage it. Don't pull off the blue portion or try to remove the clear seal underneath the cartridge.



5. Pull up the ink cartridge clamp. The cartridge rises up from its holder. (The illustration shows the color ink cartridge replacement. To replace the black ink cartridge, lift up only the smaller clamp on the left.)



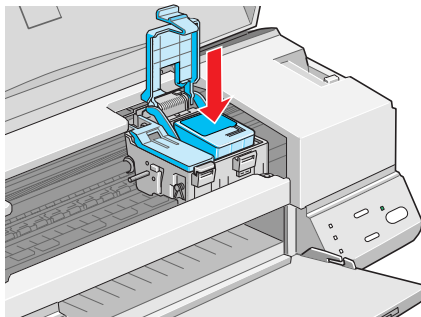
6. Lift the cartridge out of the printer and dispose of it carefully.



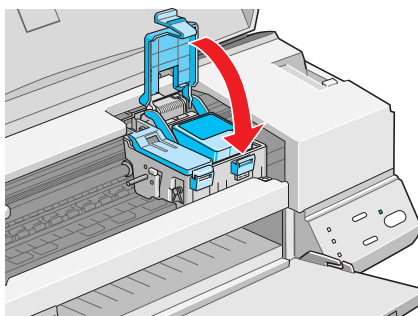
Keep ink cartridges out of the reach of children.


If ink gets on your hands, wash them thoroughly with soap and water. If ink gets into your eyes, flush them immediately with water.


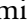
7. Lower the new ink cartridge into its holder with the label facing up and toward the back of the printer.




8. Press down the ink cartridge clamp until it locks in place.



9. If you need to replace the other ink cartridge, repeat steps 5 through 8 before continuing with step 10.
10. Press the  cleaning button and close the printer cover. The printer moves the print head and begins charging the ink delivery system.



The  power light flashes, and the printer makes noise. Charging takes about one minute. When it's finished, the  power light stops flashing and stays on.


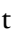
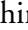


Never turn off the printer while the  power light is flashing, unless the printer hasn't moved or made noise for more than 5 minutes.

Replacing an Outdated Ink Cartridge

If an ink cartridge is more than six months old, you may need to replace it. How can you tell? You may notice that your printouts don't look as good as they used to. If print quality doesn't improve after cleaning and aligning the print head, you can replace one or both cartridges.

Follow these steps to replace an ink cartridge *before* the  black or  color ink out light is flashing or on:

1. Make sure the printer is turned on and not printing (the  power light should be on, but not flashing), then open the printer cover.
2. Press the  load/eject button and hold it for about three seconds until the print head moves slightly left and the  power light begins flashing.

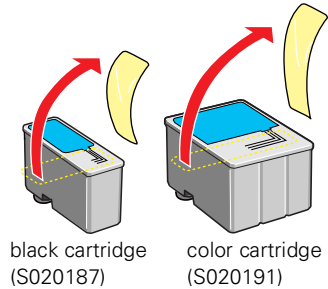


To avoid damaging the printer, never move the print head by hand. Don't open the clamp or remove a cartridge except to replace it with a new one. Once you remove a cartridge, you can't reuse it, even if it contains ink.

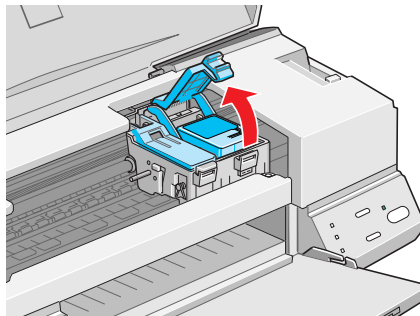
3. Unwrap the new ink cartridge.
4. Remove *only* the yellow part of the tape seal on top.



You must remove the yellow tape from the top of the cartridge or you will permanently damage it. Don't pull off the blue portion or try to remove the clear seal underneath the cartridge.



5. Pull up the ink cartridge clamp. The cartridge rises up from its holder. (The illustration shows the color ink cartridge replacement. To replace the black ink cartridge, lift up only the smaller clamp on the left.)



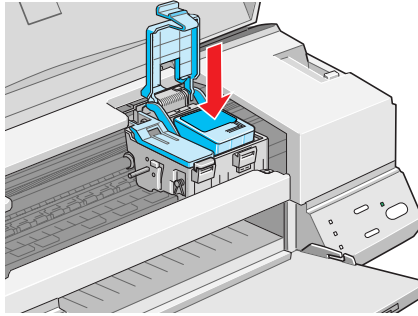
6. Lift the cartridge out of the printer and dispose of it carefully.



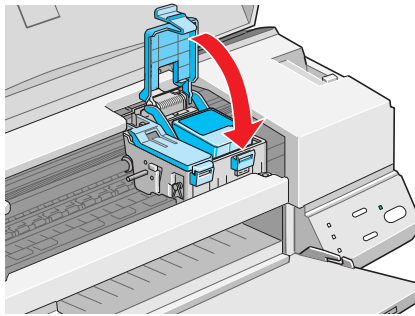
Keep ink cartridges out of the reach of children.


If ink gets on your hands, wash them thoroughly with soap and water. If ink gets into your eyes, flush them immediately with water.



7. Lower the new ink cartridge into its holder with the label facing up and toward the back of the printer.




8. Press down the ink cartridge clamp until it locks in place.



9. Press the  load/eject button again and close the printer cover. The printer moves the print head and begins charging the ink delivery system.

The  power light flashes and the printer makes noise. Charging takes about one minute. When it's finished, the  power light stops flashing and stays on.



Never turn off the printer while the  power light is flashing, unless the printer hasn't moved or made noise for more than 5 minutes.

Aligning the Print Head

If your printouts contain misaligned vertical lines, you may need to align the print head. Your printer must be connected to a local port, not on a network, to use the Print Head Alignment utility.



For the best results, load EPSON ink jet paper in the printer whenever you check the print head alignment.

Follow these steps:

1. Make sure the printer is turned on and letter-size paper is loaded.



Load paper that's at least 8.27 inches (210 mm) wide. This prevents ink from spraying inside the printer and smudging your printouts.

2. If you have an application running, access the printer settings dialog box as described on page 13.

Or click Start, point to Settings, then select Printers. Right-click the EPSON Stylus COLOR 660 icon in the Printers windows. Select Properties (Document Defaults in Windows NT).

3. Click the Utility tab. You see the Utility menu.
4. Click the Print Head Alignment button.
5. Follow the instructions on the screen to print a test page.
6. Select the most precise alignment pattern from the printed choices on the test page. Enter the number of the best aligned pattern following the instructions on the screen.

Cleaning the Printer

To keep your printer working at its best, you should clean it several times a year. Follow these steps:

1. Turn off the printer, unplug the power cord, and disconnect the printer cable.
2. Remove all the paper from the sheet feeder.
3. Clean the exterior of the printer with a soft, damp cloth.
4. Clean ink out of the printer's interior with a soft, damp cloth.



Don't touch the gears inside the printer.

Never use alcohol or thinner for cleaning; they can damage the printer components and case.

Don't use a hard or abrasive brush.

Don't get water on the printer components and don't spray lubricants or oils inside the printer.

Don't use any cleaning sheets included with special media; they may jam inside the printer.

Transporting the Printer

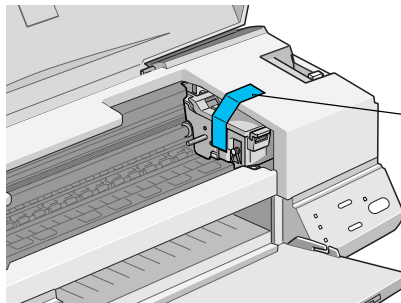
If you move your printer some distance, you need to prepare it for transportation in its original box. Follow these steps:



To avoid damage, always leave the ink cartridges installed when transporting the printer.

Be sure to remove the tape used in step 4 after installing the printer in its new location.

1. Turn on the printer, wait until the print head locks in the far right position, then turn off the printer.
2. Unplug the power cord from the electrical outlet. Then disconnect the printer cable from the printer.
3. Remove any paper from the printer and remove the paper support.
4. Open the printer cover. Secure the ink cartridge holder to the printer with tape as shown, then close the printer cover.



Tape the ink cartridge holder to the printer case; remove the tape after installing the printer

5. Push in the output tray extensions and close the tray.
6. Repack the printer and attachments in the original box using the protective materials that came with it. See the unpacking sheet that was packed with your printer.

Be sure to keep the printer level as you transport it. If you notice a decline in print quality after transporting the printer, clean the print head (see page 27); if output is misaligned, align the print head (see page 37).

Problem Solving

This section gives you the basics for diagnosing and solving printer problems.

- First see “Diagnosing Printer Problems” to help determine what the cause of the problem may be.
- Then see “Problems and Solutions” on page 45 for solutions to common setup and software problems.

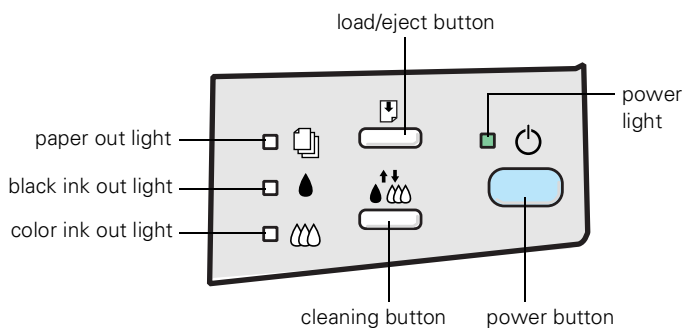


It’s a good idea to check EPSON’s web site periodically for possible updates to your printer driver. Visit www.epson.com and check the section for your product to see if there is a new driver available for downloading to your computer.

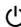
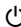









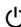



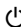



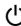



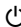



Diagnosing Printer Problems

You can diagnose some problems by checking the printer’s control panel lights, as described below. It may also be helpful to try running a printer check; see page 43 for instructions.

Checking the Control Panel Lights







Follow these guidelines when the control panel lights come on or flash:

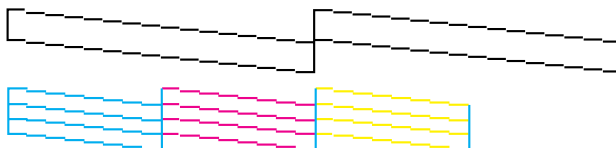
 is on	<p>The  power light is on when the printer is on and ready to print. It flashes when the printer is receiving a print job, charging ink, or cleaning the print head.</p>
 flashes	<p>When the  paper out light flashes, you have a paper jam. Turn off the printer and gently pull out all the paper. Make sure none of the sheets are curled, creased, old, stuck together, or too thin. Then reload the stack against the right edge guide and slide the left edge guide over to the paper's left edge. Then turn the printer on.</p>
 is on	<p>When the  paper out light comes on, your paper is out or incorrectly loaded. Make sure none of the sheets are curled, creased, old, stuck together, or too thin. Then reload the stack against the right edge guide and slide the left edge guide over to the paper's left edge. Press the  load/eject button to resume printing.</p>
 or  flash	<p>When an ink out light flashes, your ink supply is low. Make sure you have a replacement cartridge (black S020187, color S020191).</p>
 or  are on	<p>When an ink out light comes on, you need to replace the ink cartridge. Make sure you have a replacement cartridge (black S020187, color S020191). See page 31 for replacement instructions.</p>
 and  flash and  and  are on	<p>When the  power and  paper out lights flash and the  black and  color ink out lights come on, jammed paper may be blocking movement of the print head. Turn off the printer, wait a few seconds, and turn it back on. If no paper ejects, turn off the printer, remove the jammed paper, and turn it on again. If the lights still flash, contact your dealer or EPSON; see page 53 for contact information.</p>
    flash	<p>When all the lights flash, your printer may have an internal error. Make sure you removed all the packing material as described on the unpacking sheet in your printer box. Then turn off the printer, wait a few seconds, and turn it on again. If the lights still flash, contact your dealer or EPSON; see page 53 for contact information.</p>
    are off	<p>When all the lights are off, the printer is not receiving power. Try these solutions:</p> <ul style="list-style-type: none"> ■ Make sure the printer is turned on. ■ Turn off the printer, plug in the power cord securely, and turn on the printer again. ■ Make sure the outlet is operable and is not controlled by a switch or timer. ■ Try using another outlet.

Running a Printer Check

You can run a printer check to determine whether the problem comes from the printer itself or some other source. Follow these steps to run the printer check:

1. Make sure both the printer and computer are turned off.
2. Disconnect the interface cable from the printer.
3. Make sure paper is loaded in the printer.
4. Hold down the  load/eject button, then press and release the  power button. Continue holding down the  load/eject button until the  power light starts to flash, then release it.

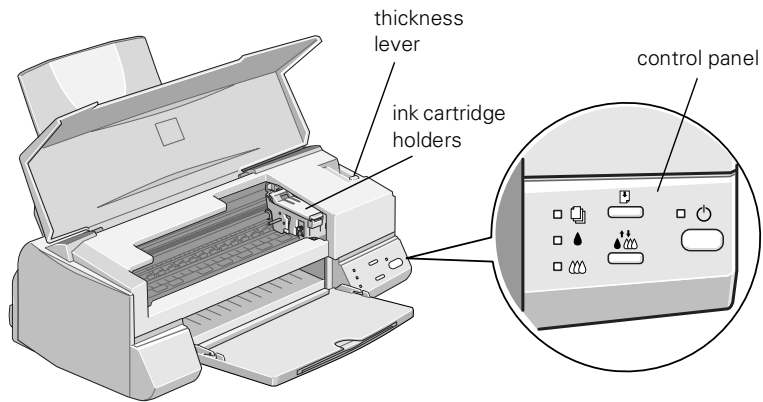
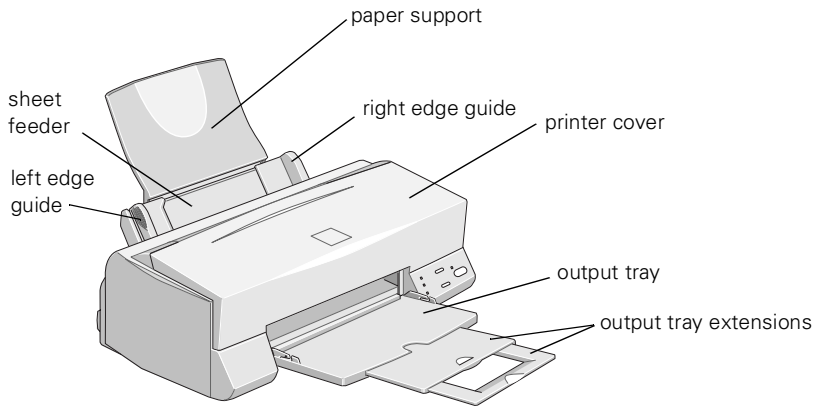
The printer prints one page showing its ROM version number, ink counter, and a nozzle check pattern. Only the nozzle check pattern is shown below.



5. To end the check, turn off the printer after it prints the check page. Then reconnect the interface cable and turn on your printer and computer.
 - If the results are satisfactory, the problem lies in your software settings, the interface cable, or your computer.
 - If the check page does not print correctly, you may have a problem with your printer. Try the suggestions in “Problems and Solutions” on page 45 for more information.

Printer Parts

If you need help identifying the parts of the printer, refer to the following illustrations:



Problems and Solutions

Here are some basic troubleshooting tips if you have any problems setting up your printer, installing software, or getting good print quality.

Solving Problems Setting Up the Printer or Installing Its Software

The printer started making noise after you installed the ink cartridges . . .

- The first time you install ink cartridges, the printer must charge its ink delivery system for a couple minutes. Wait until charging is finished (the ⏻ power light stops flashing) before you turn off the printer. If you turn off the printer while it is charging, it will begin charging again the next time you turn on the printer and use more ink than necessary.
- Make sure the ink cartridge clamps are locked down completely and that no packing material remains in the printer.

The printer has finished charging the ink cartridge, but the ⏻ power light is still flashing . . .

- Make sure the ink cartridge clamps are locked into place.
- Make sure all packing material has been removed.
- If the printer is not moving or making noise, but the light is still flashing after 5 minutes have passed, turn the printer off. If the light is still flashing when you turn it back on, contact your EPSON dealer or see “Where To Get Help.”

You’re having problems installing the printer software . . .

- Carefully follow the instructions in *Start Here*.
- Make sure your printer is turned on and the printer cable is securely connected.
- Make sure you’ve closed all other applications, including any screen savers. Then try installing the software again.

If you installed the software and cable for the parallel connection and now want to use the USB/Parallel Adapter . . .

You must first uninstall the printer software as described on page 52, then install the USB/Parallel Adapter software.

If you installed the USB/Parallel Adapter software and cable and now want to use a parallel cable . . .

Follow the steps below (you don't need to reinstall the software).

1. Turn off the printer.
2. Disconnect the USB/Parallel Adapter cable and connect the parallel cable to your printer and computer.
3. Double-click the My Computer icon.
4. Double-click the Printers icon.
5. Right-click your printer icon and select Properties.
6. On the Details tab, select LPT1, then click OK.
7. Close any open windows, then restart your computer.

You're using the parallel port . . .

For maximum print speeds, enable ECP/DMA mode on your computer's parallel port. See your

computer documentation or the manufacturer for instructions. (ECP/DMA doesn't need to be enabled if you're using the USB/Parallel Adapter cable.)

You're printing over a network . . .

See your electronic *EPSON Stylus COLOR 660 Reference Guide* for computer configuration instructions.

Solving Problems with Printing

Only the power light is on, but nothing prints . . .

- Make sure the interface cable is connected securely. (Use a fully shielded IEEE-1284 compliant parallel cable.)
- Run a printer check as described on page 43.

If you ran a printer check successfully, make sure your printer and application software are installed correctly. If you're printing on a network, you may need to set up your printer for network printing, as described in your electronic *EPSON Stylus COLOR 660 Reference Guide*.

The printer sounds as though it is printing, but nothing prints . . .

Make sure the print head nozzles are not clogged. To clean the print head, see page 27.

Printing is too slow . . .

Make sure your system meets the requirements listed on page 4. If you are printing a high-resolution image, you need more than the minimum requirements listed. You may also need to do the following:

- Clear space on your hard disk or run a defragmentation utility.
- Don't run too many applications at the same time.
- Increase your system's memory (RAM).

For the fastest printing, try the following:

- Choose Black ink if your document does not include any other color.
- Set the Quality/Speed slider to Speed.
- In the printer software's Advanced dialog box, turn MicroWeave off and turn High Speed on.

Your printer makes noise when you turn it on or after it has been sitting for a while . . .

Your printer is performing routine maintenance.

Solving Problems Getting Good Print Quality



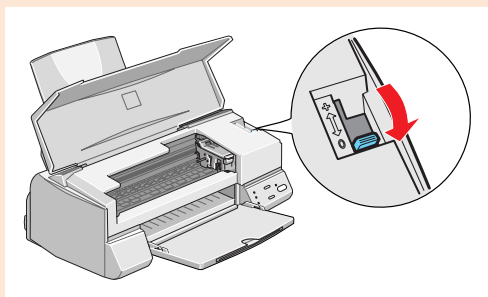
You see horizontal banding . . .

- Make sure the print head nozzles are not clogged. To clean the print head, see page 27.
- Make sure the Media Type setting matches the paper you loaded. See page 26 for guidelines.
- Make sure the printable side of the paper is face up. It is usually whiter or shinier.
- Make sure the ink cartridges aren't low on ink. If either ink out light is flashing, replace the ink cartridge; see page 31. If your ink cartridge is more than six months old, you may need to replace it; see page 34.
- Try using Automatic mode. See page 14 for instructions.
- For most papers, make sure the paper thickness lever is in the + position, as shown on the next page. If you're printing on thicker paper or envelopes, set the lever to 0.



You see vertical banding . . .

- Make sure the print head nozzles are not clogged. To clean the print head, see page 27.
- Run the Print Head Alignment utility. See page 37 for instructions.
- Make sure the paper thickness lever is in the **0** position, as shown below. Set the thickness lever to the **+** position when you print on thicker paper or envelopes. You may also need to turn off High Speed printing in the printer software's Advanced dialog box.



Your printout is blurry or smeared . . .

- Make sure your paper isn't damp or loaded face down (the printable side should be loaded face up). If it's damp, reload a new stack of paper.
- Use a support sheet with special media or try loading your media one sheet at a time.
- Make sure your paper or media meets the specifications listed in your electronic *EPSON Stylus COLOR 660 Reference Guide*.
- Run the Print Head Alignment utility. See page 37 for instructions.
- Check the paper thickness lever position. If it's in the **+** position, your printer is set for thicker paper or envelopes and your image may smear. For most papers, set the paper thickness lever to the **0** position, as shown to the left.



Your printout is faint or has gaps in the image . . .

- Make sure the print head nozzles are not clogged. To clean the print head, see page 27.
- Make sure the ink cartridges aren't low on ink. To replace an ink cartridge, see page 31.
- Make sure the Media Type setting matches the paper you're using.
- Make sure your paper isn't damaged, old, dirty, or loaded face down. If it is, reload a new stack of paper with the printable side up. The printable surface is usually whiter or shinier.



Your printout contains incorrect or missing colors . . .

- Make sure the Ink setting is set to Color for color images.
- Make sure the print head nozzles are not clogged. To clean the print head, see page 27.
- Make sure the ink cartridges aren't low on ink or too old. If either ink out light is flashing, replace the ink cartridge; see page 31. If your ink cartridge is more than six months old, you may need to replace it; see page 34.
- If you are printing a high-resolution image, try turning off PhotoEnhance.
- Try using Automatic mode. See page 14 for instructions.
- Your printed colors can never exactly match your on-screen colors. However, you can use a color management system to get as close as possible. For information on your printer software's color matching options, see your electronic *EPSON Stylus COLOR 660 Reference Guide*.

Your printout contains incorrect characters . . .

- Your printer's interface cable may not be securely connected. Check that the cable is locked firmly in place at both ends to ensure proper communication between your printer and computer. After adjusting the cable, try printing from an application again.
- Your printer may not be selected as the current printer in your application or as the Windows default printer. Be sure to select EPSON Stylus COLOR 660 in your application. For instructions on selecting the Windows default printer, see your Windows documentation or online help.
- Make sure there aren't any stalled print jobs. If there are, delete them and then try printing again.
- Make sure you're not using a switch box with your printer; connect the printer directly to your computer and try printing again.

Your printout is grainy . . .

- Try using a higher quality paper.
- Make sure you set the Quality/Speed slider to the Quality setting in your printer software; see page 14 for instructions.


- Run the Print Head Alignment utility. See page 37 for instructions.
- You may need to increase the image resolution or print it in a smaller size. See your software documentation for instructions.

Color documents print in black and white . . .

- Make sure your printer and port are selected in your software application.
- Make sure color printing is selected in your application and the printer software.


Solving Problems with Paper Feeding

Paper doesn't eject fully or is wrinkled . . .

- If the paper doesn't eject fully, you may have set the wrong paper size. Press the  load/eject button to eject the paper. Then make sure you select the correct paper size in your application or printer software.
- If it's wrinkled when it comes out, the paper may be damp or too thin.

Paper doesn't feed . . .

Remove the stack of paper from the sheet feeder. Check that the paper:

- Isn't curled or creased
- Isn't too old
- Isn't loaded above the arrow on the left edge guide
- Isn't jammed inside the printer. (If the  paper out light is flashing, paper is jammed.)

Then reload the paper as described on page 12, making sure the left edge guide is adjusted to fit the paper's width.

Paper jams inside the printer . . .

Turn off your printer, open the cover, and remove all the paper that's inside, including any small pieces that may have torn off.

Reload the paper as described on page 12. If your paper jams frequently, make sure you:

- Use smooth, high-quality paper, loaded printable side up.
- Fan the stack and then even the edges before loading it.
- Don't load paper above the arrow mark on the left edge guide.
- Place the paper against the right edge guide and adjust the left edge guide to fit the width of your paper.

Multiple pages feed at the same time . . .

Remove the stack of paper from the printer.

- Make sure the paper isn't too thin.
- Fan the edges of the stack of paper to separate the sheets.
- Reload the paper as described on page 12.
- Make sure the edge guides are snug against the edges of the paper.
- If too many copies are printing, check the Copies settings in both the printer software and your application program.

Solving Miscellaneous Printout Problems

The margins are incorrect . . .

- Make sure the paper settings are correct for your paper size.
- Check your software documentation for instructions on selecting the correct margins for your paper size. Make sure the margins are within the printable area of the page. See "Specifications" in your electronic *EPSON Stylus COLOR 660 Reference Guide* for more information.

The image size or position is incorrect . . .

Make sure the paper and/or layout options are set correctly.

The image is inverted, as if viewed in a mirror . . .

Turn off Flip Horizontal in the printer software or the mirror setting in your application software. (If you are printing on EPSON Iron-On Cool Peel transfer paper, turn on the Flip Horizontal setting so the image will view correctly after it is ironed on.)

The printer prints blank pages . .

- Make sure your printer is selected in your application or as the Windows default printer.
- Make sure the paper settings in the printer software are correct for your paper size.
- Make sure the print head nozzles are not clogged. To clean the print head, see page 27.

Uninstalling Printer Software

If you need to uninstall your printer software, follow the steps below:

1. Double-click the My Computer icon, then double-click the Control Panel icon.
2. Double-click Add/Remove Programs.
3. Click EPSON Printer Software in the program list.
4. Select the EPSON Stylus COLOR 660 printer icon.
5. Click the Add/Remove button and follow the instructions on screen.
6. If you installed the software for the optional USB/Parallel Adapter, continue with step 7. Otherwise skip to step 9.
7. Click EPSON USB Printer Software in the program list.
8. Click the Add/Remove button and follow the instructions on screen.
9. Restart your computer. To reinstall your software, see the next section.

Reinstalling Printer Software

If you need to reinstall your printer software, follow the instructions in *Start Here*. Before you begin, make sure you uninstalled the printer software, following the instructions in the previous section.

Where To Get Help

If you need help with your printer or its software, see the contact information below. For help with the creative applications on the printer software CD-ROM, see page 54 for contact information.

EPSON Technical Support

EPSON provides technical assistance through electronic support services and automated telephone services 24 hours a day, as listed in the following tables:

Electronic support services

Service	Access
World Wide Web	From the Internet, you can reach EPSON's Home Page at http://www.epson.com .
EPSON Internet FTP Site	If you have Internet FTP capability, use your Web browser (or other software for FTP downloading) to log onto ftp.epson.com with the user name anonymous and your e-mail address as the password.
EPSON Forum on CompuServe	Members of CompuServe can type GO EPSON at the menu prompt to reach the Epson America Forum. For a free introductory CompuServe membership, call (800) 848-8199 and ask for representative #529.

Automated telephone services

Service	Access
EPSON SoundAdvice SM	For pre-recorded answers to commonly asked questions about EPSON products 24 hours a day, seven days a week, call (800) 922-8911 .
EPSON FaxAdvice TM	Access EPSON's technical information library by calling (800) 922-8911 . You must provide a return fax number to use this service.
EPSON Referral Service	For the location of your nearest Authorized EPSON Reseller or Customer Care Center, call (800) 922-8911 .

To speak to a technical support representative, dial:

- U.S.: (562) 276-7533, 6 AM to 8 PM, Pacific Time, Monday through Friday and 7 AM to 4 PM, Saturday
- Canada: (905) 709-2567, 6 AM to 8 PM, Pacific Time, Monday through Friday and 7 AM to 4 PM, Saturday

Toll or long distance charges may apply.

Before you call, please have the following information ready:

- Product name (EPSON Stylus COLOR 660)
- Product serial number (located on the back of the printer)
- Computer configuration
- Description of the problem

You can purchase ink cartridges, paper, manuals, and accessories from EPSON Accessories at (800) 873-7766 or visit our website at www.epsonsupplies.com (U.S. sales only). In Canada, please call (800) 873-7766 for dealer referral.

If you need help using another manufacturer's software with an EPSON product, see the documentation for that software for technical support information.

Creative Software Technical Support

If you need help with the creative software on the printer software CD-ROM, please contact the manufacturer, as listed below:

Contact method	Polaroid PhotoMAX Pro ArcSoft PhotoPrinter
Phone	(510) 440-9901, 8:30 am to 5:30 pm Pacific Standard Time
Fax	(510) 440-1270
Online	e-mail: support@arcsoft.com web site: http://www.arcsoft.com
Mail	ArcSoft Technical Support 46601 Fremont Blvd. Fremont, CA 94538

Index

Numerics

360 dpi Ink Jet Paper, 26
4 x 6-in Photo Paper, 23

A

Accessories, 4, 54
Advanced settings
 custom project types, 18 to 20
 print quality, 20 to 21
 special effects, 18, 20 to 21
Automatic mode, 15

B

Banding, 47
Bonus software, 2
Browser, 7

C

Cable, printer, 4
Cleaning
 print head, 27 to 30
 printer, 38
 sheets, 26, 28, 38
Color management settings, 21
Creative software, 2
Custom project types, 18 to 20

D

Digital Camera Correction setting, 17

E

Economy setting, 19
Electronic manual, 7
ENERGY STAR, 4
Envelopes, 25
EPSON
 Accessories, 4, 54
 help, 53 to 54
 media and paper, 26

F

Faint images, 49
Flip Horizontal setting, 52

G

Graph setting, 19
Guided Printing Exercise, 11

H

Head Cleaning utility, 28
Help, 15, 53 to 54
High-resolution images, 17

I

ICM (Image Color Matching) setting, 19
Incorrect colors in printout, 49
Ink cartridge
 replacing, 31 to 34
 replacing outdated, 31, 34 to 36
 safety instructions, 6
Ink Jet Transparencies, 26
Ink level, 16

Ink setting, 14, 17, 19, 21
Installation
 software, 52
 troubleshooting, 45
Iron-On Cool Peel Transfer Paper, 26

L

Layout
 problems, 52
 settings, 18
Lever, thickness, 25, 47, 48
Low-resolution images, 17

M

Macintosh, 4
Media Pack, 22
Media Type setting, 14, 19, 21, 26
Mirror images, 52
Monitoring ink level, 16
Moving printer, 39

N

Network printing, 46
Nozzle check pattern, 30

P

Panoramic Photo Paper, 24
Paper
 handling problems, 50 to 51
 loading, 22 to 25
 thickness lever, 25, 47, 48
 types, settings, 14
Photo Paper, 22 to 24, 26
Photo Quality Glossy Film, 26
Photo Quality Ink Jet Paper, 22, 26
Photo Quality Media Pack, 22
PhotoEnhance settings, 17 to 18
Photographs, printing, 17 to 18

Print Head Alignment utility, 37
Print head, cleaning, 27 to 30
Print quality, 27, 47 to 50
Printable area setting, 23
Printer
 cable, 4
 noise, 47
 parts, 44
Printer software
 problems installing, 45
 reinstalling, 52
 uninstalling, 52
Printer status, 16
Printing, 12 to 17
Problems
 installing software, 45
 miscellaneous, 51
 paper handling, 50 to 51
 print quality, 47 to 50
 printing, 46
 setting up printer, 45
Progress Meter, 16
Project types, custom, 18 to 20

Q

Quality/Speed setting, 15

R

Reinstalling software, 52

S

Safety instructions, 5 to 6
Service, 53 to 54
Smears, 25, 47, 48
Software
 bonus, 54
 creative, 2
 installing, 2
 troubleshooting, 45
Special effects, 20 to 21

Special papers, 22 to 26, 28
sRGB (Standard Red Green Blue) setting, 19
Support, 53 to 54
System requirements, 4

T

Text/Graph setting, 19
Thickness lever, 25, 47, 48
Transfer Paper, Iron-On Cool Peel, 26
Transparencies, 26
Transporting printer, 39
Troubleshooting, 53 to 54

U

Uninstalling software, 52
USB, 4, 46
Utilities
 Head Cleaning, 28
 Print Head Alignment, 37

W

Windows
 printer status, 16
 system requirements, 4
 USB, 4, 46
World Wide Web, 53

Y

Year 2000, 5

FCC Compliance Statement

For United States Users

This equipment has been tested and found to comply with the limits for a Class B digital device, pursuant to Part 15 of the FCC Rules. These limits are designed to provide reasonable protection against harmful interference in a residential installation. This equipment generates, uses, and can radiate radio frequency energy and, if not installed and used in accordance with the instructions, may cause harmful interference to radio or television reception. However, there is no guarantee that interference will not occur in a particular installation. If this equipment does cause interference to radio and television reception, which can be determined by turning the equipment off and on, the user is encouraged to try to correct the interference by one or more of the following measures:

- Reorient or relocate the receiving antenna.
- Increase the separation between the equipment and receiver.
- Connect the equipment into an outlet on a circuit different from that to which the receiver is connected.
- Consult the dealer or an experienced radio/TV technician for help.

WARNING

The connection of a non-shielded equipment interface cable to this equipment will invalidate the FCC Certification of this device and may cause interference levels which exceed the limits established by the FCC for this equipment. It is the responsibility of the user to obtain and use a shielded equipment interface cable with this device. If this equipment has more than one interface connector, do not leave cables connected to unused interfaces. Changes or modifications not expressly approved by the manufacturer could void the user's authority to operate the equipment.

For Canadian Users

This Class B digital apparatus meets all requirements of the Canadian Interference-Causing Equipment Regulations.

Cet appareil numérique de la classe B respecte toutes les exigences du Règlement sur le matériel brouilleur du Canada.

EPSON Ink Jet Papers

Use EPSON's paper and inks to get the same photo quality results that have earned your printer all of its awards! EPSON's papers are specially coated to work with EPSON's quick drying inks. You'll notice that when prints come out of your printer, you can immediately handle them. There is no drying time, no smearing or smudging, and your image is clean and smooth. Here are just a few of EPSON's papers:

Photo Quality Ink Jet Paper

Bright white, with a smooth matte finish to create your best impression. Perfect for presentations, newsletters, color reproductions, and all your photo and craft projects.



Photo Quality Glossy Film

Durable, bright white film sheets with the highest-gloss finish. Perfect for printing professional quality, high-resolution photographs of all your digital images.



Photo Paper and Panoramic Photo Paper

Photo lab quality, heavier weight glossy paper available in a variety of sizes. Perfect for color photo keepsakes of snapshots, framed art, banners, and panoramics.



Iron-On Cool Peel Transfer Paper

Transfer your designs and photographs onto t-shirts or other cloth items. Perfect for ironing onto team t-shirts, canvas bags, crafts, and gifts.



See the inside back cover for a list of EPSON papers and ordering information.

How to Order EPSON Ink and Paper

To order EPSON ink cartridges, paper, and other printing media, contact your dealer or call EPSON Accessories at (800) 873-7766 or visit our web site at www.epsonsupplies.com (U.S. sales only). In Canada, please call (800) 873-7766 for dealer referral.

Ink Cartridges

Black	S020187
Color	S020191

EPSON Papers

Paper name	Size	Part number
EPSON 360 dpi Ink Jet Paper	Letter	S041060
	A4 (8.3 x 11.7 inches)	S041059
EPSON High Quality Ink Jet Paper	Letter	S041111
	A4 (8.3 x 11.7 inches)	S041117
EPSON Photo Quality Ink Jet Paper	Letter	S041062
	A4 (8.3 x 11.7 inches)	S041061
	Legal	S041067
EPSON Photo Quality Ink Jet Cards	A6 (4.1 x 5.8 inches)	S041054
	8 x 10 inches	S041122
EPSON Photo Paper	4 x 6 inches	S041134
	Letter	S041141
	A4 (8.3 x 11.7 inches)	S041140
	Panoramic (8.3 x 23 inches)	S041145
EPSON Photo Stickers Kit (CD-ROM/paper)	A6 (4.1 x 5.8 inches)	S041144-KIT
EPSON Photo Stickers (refill)	A6 (4.1 x 5.8 inches)	S041144
EPSON Photo Quality Glossy Film	Letter	S041072
	A4 (8.3 x 11.7 inches)	S041071
	A6 (4.1 x 5.8 inches)	S041107
EPSON Ink Jet Transparencies	Letter	S041064
	A4 (8.3 x 11.7 inches)	S041063
EPSON Photo Quality Self Adhesive Sheets	A4 (8.3 x 11.7 inches)	S041106
EPSON Iron-On Cool Peel Transfer Paper	Letter	S041153/S041155
EPSON Photo Quality Glossy Paper	Letter	S041124
	A4	S041126
Matte Paper - Heavyweight	Letter	S041257