

EPSON®

EPSON STYLUS® **RIP**

User's Guide



Printed on recycled paper with at least 10% post-consumer content.

All rights reserved. No part of this publication may be reproduced, stored in a retrieval system, or transmitted in any form or by any means, electronic, mechanical, photocopying, recording, or otherwise, without the prior written permission of SEIKO EPSON CORPORATION. The information contained herein is designed only for use with this EPSON printer. EPSON is not responsible for any use of this information as applied to other printers.

Neither SEIKO EPSON CORPORATION nor its affiliates shall be liable to the purchaser of this product or third parties for damages, losses, costs, or expenses incurred by purchaser or third parties as a result of: accident, misuse, or abuse of this product or unauthorized modifications, repairs, or alterations to this product, or (excluding the U.S.) failure to strictly comply with SEIKO EPSON CORPORATION's operating and maintenance instructions.

SEIKO EPSON CORPORATION shall not be liable for any damages or problems arising from the use of any options or any consumable products other than those designated as Original EPSON Products or EPSON Approved Products by SEIKO EPSON CORPORATION.

EPSON and EPSON Stylus are registered trademarks and EPSON Stylus RIP is a trademark of SEIKO EPSON CORPORATION.

AcuPhoto and EPSON FaxAdvice are trademarks and EPSON SoundAdvice is a service mark of Epson America, Inc.

Adobe, PageMaker, Illustrator, PostScript, and the PostScript logo are registered trademarks of Adobe Systems Incorporated.

PANTONE is a registered trademark and PANTONE CALIBRATED is a trademark of Pantone, Inc.

General Notice: Other product names used herein are for identification purposes only and may be trademarks of their respective owners. EPSON disclaims any and all rights in those marks.

Contents

Introduction

Do You Need PostScript?	1
Special Features	2
Macintosh System Requirements	3
Windows System Requirements	4
How To Use Your Manuals	4
Cautions, Notes, and Tips	5
Where To Get Help	6

1 Installing EPSON Stylus RIP for Macintosh

Checking the Printer	1-2
Determining Your Configuration	1-3
Standalone Configuration	1-3
Direct Connection Network Configuration	1-4
Typical Network Configuration	1-5
Installing EPSON Stylus RIP on a Standalone or Print Server Macintosh	1-6
Installing EPSON Stylus RIP on a Client Macintosh	1-8

Color Matching	1-9
Press Simulations	1-9
ColorSync 2.x Support	1-10
PANTONE Color Support	1-10

2 *Printing with EPSON Stylus RIP for Macintosh*

Setting Up the EPSON Stylus RIP Server	2-2
Configuring EPSON Stylus RIP Preferences	2-4
Setting Up the Chooser and PostScript Drivers	2-5
Printing from an Application	2-8
Sending the Print Job	2-9
Setting Print Job Options	2-10
Starting the EPSON Stylus RIP Server Software	
Automatically	2-14
Drag and Drop Printing	2-15
Managing Print Jobs	2-16
Using the Stylus RIP Monitor	2-17

3 *Installing EPSON Stylus RIP for Windows*

Checking the Printer	3-2
Installing the EPSON Stylus RIP Software	3-2
Installing the PostScript Driver	3-4
Installing the PostScript Driver on Client Computers	3-7
Color Matching	3-9
ICC Support	3-9
PANTONE Color Support	3-10

4 *Printing with EPSON Stylus RIP for Windows*

Printing from an Application	4-1
Starting EPSON Stylus RIP	4-2
Printing with the Default Options	4-3
Printing and Setting Printer Options	4-4
Managing Print Jobs	4-9
Batch Printing	4-10
Network Printing	4-11
Enabling File and Print Sharing	4-11
Connecting the Client Computers	4-12
Sending Print Jobs from Client Computers	4-13
Configuring EPSON Stylus RIP	4-15
Setting EPSON Stylus RIP Preferences	4-15
Starting Stylus RIP Automatically	4-16

5 *Troubleshooting*

Printing High Quality Color Images	5-1
Solving Problems	5-2
You see a Printer cannot be opened or Printer not found error message (Macintosh)	5-2
You see a memory or VM error message (Macintosh)	5-3
You see a communications error message when you try to open Stylus RIP	5-3
Stylus RIP does not run (Windows)	5-3
Your saved files don't print (Windows)	5-4
Stylus RIP takes a long time before printing starts	5-4
Your printouts contain incorrect fonts or jagged type	5-4

Contents

The printer is producing pages containing illegible type or characters	5-5
Images and type look bitmapped and jagged on your printouts	5-5
You see Font not found or Find font error messages (Macintosh)	5-6
One or more colors are missing in your printout or it prints in black ink only	5-6
Your printed output has white lines	5-7
Bitmap images or clip art looks jagged	5-7
You're having trouble printing from PageMaker 6.0 or 6.5 (Windows)	5-7
EPS and TIFF files do not print	5-7
Your printout has misplaced images or type	5-8
Printed images are clipped at the edges	5-8
Your Macintosh freezes when you try to print from QuarkXPress	5-8
Your Macintosh loses custom page sizes when selecting PDF file output from QuarkXPress 3.3x	5-8

Index

Introduction

The EPSON Stylus® RIP software lets you use your EPSON Stylus COLOR or EPSON Stylus Photo ink jet printer as a PostScript® 3 (Macintosh® and Windows NT®) and Level 2 (Windows® 95/98) compatible printer. It reads the Adobe® PostScript files automatically created by the EPSON Stylus RIP printer driver, seamlessly converts them into raster images, and automatically prints them on your printer. You can use the EPSON Stylus RIP with both Macintosh and Windows systems, in standalone or networked configurations.

Adobe PostScript is the industry standard for high-quality graphic output. All the elements in a document—including text, graphics, and other images—are processed and reproduced using PostScript code. Then, when you print from an application such as QuarkXPress®, the RIP software creates a raster image from the PostScript code and sends it to your printer.

Do You Need PostScript?

In many cases, you may not need the ability to print in PostScript, and for these occasions you should use the standard, non-PostScript driver that comes with your printer. Using the standard driver is also a good way to ensure that your computer and printer are connected and working properly, so make sure you install the non-PostScript EPSON driver following the instructions in your printer's setup guide.

Here's what you can use the EPSON Stylus RIP for:

- Printing documents with placed or imported EPS images
- Printing from complex PostScript-based drawing and publishing applications like Adobe Illustrator®, Macromedia® Freehand®, Adobe PageMaker®, QuarkXPress, and CorelDRAW™
- Matching PANTONE® spot colors

For all other printing applications, especially photography, use the standard, non-PostScript EPSON driver. In many cases, you will get better performance with the standard driver than with the EPSON Stylus RIP.

Special Features

To make the most of your printer's photo-quality output, the EPSON Stylus RIP software includes these special features:

- EPSON error diffusion software, the same high-quality AcuPhoto™ halftoning technology used in EPSON's non-PostScript printer drivers
- PANTONE professional color palette files—calibrated for your EPSON Stylus COLOR or EPSON Stylus Photo printer using a variety of media at various resolutions—to give you PANTONE colors when you use PANTONE licensed applications
- Support for ColorSync® 2.x on the Macintosh and Image Color Matching (ICM) for Windows through International Color Consortium® (ICC) profiles
- Press Simulation, which adjusts your EPSON printer's color gamut to more closely match the output of SWOP-coated printing devices

Macintosh System Requirements

To use EPSON Stylus RIP with a Macintosh in either a standalone or network environment as a print server, your system should meet the following minimum requirements:

- ▶ Power Macintosh®, iMac™ series, or Power Macintosh G3 series
- ▶ At least 16MB of available RAM for the EPSON Stylus RIP software (20MB or more is recommended), in addition to the RAM needed by your operating system and other applications
- ▶ At least 52MB of free hard disk space to install the software and at least 150MB of hard disk space for processing large files
- ▶ Macintosh Operating System 7.6.1 or later
- ▶ CD-ROM drive
- ▶ Serial, Ethernet, or USB (SC900/SP1200 only) connection to the printer

To set up a Macintosh as a client on a network using the EPSON Stylus RIP, your system must have the following minimum configuration:

- ▶ Macintosh Centris®, Macintosh Quadra®, Performa®, iMac series, Power Macintosh G3 series, or Power Macintosh
- ▶ Ethernet™ AppleTalk® connection with the Macintosh set up as the EPSON Stylus RIP print server
- ▶ 8MB RAM
- ▶ At least 2MB of free hard disk space to install the software and at least 150MB of free hard disk space for processing large files
- ▶ Macintosh Operating System 7.6.1 or later
- ▶ CD-ROM drive

Windows System Requirements

To use the EPSON Stylus RIP in either a standalone or peer-to-peer network environment, your system should include:

- ▶ IBM®-compatible PC with 486 or higher processor (Pentium® 133 MHz or higher recommended)
- ▶ Microsoft Windows 95/98 or Windows NT 4.0
- ▶ At least 16MB of RAM (32MB or more recommended)
- ▶ At least 50MB of free hard disk space to install the software and at least 150MB of free hard disk space for processing files (more for large files)
- ▶ CD-ROM drive
- ▶ An available parallel port configured as LPT1

You can print with the EPSON Stylus RIP on a peer-to-peer Windows network by using file sharing, with the printer connected to the print server's parallel port. In this networked environment, you install the EPSON Stylus RIP software on the print server only, and install the PostScript printer driver on all your other networked computers. See page 3-4 for instructions.

How To Use Your Manuals

Before you install the RIP, make sure you set up your printer and install the standard EPSON non-PostScript driver that came with your printer, following the instructions in your printer's setup guide. Refer to your EPSON printer's user's guide for instructions on using and maintaining your printer.

If you're familiar with software PostScript interpreters, you can use the *EPSON Stylus RIP Quick Start Guide* to get started with the RIP.

For more information about installing and using the software, refer to this *User's Guide*, which contains the following:

Chapter 1 tells you how to install the EPSON Stylus RIP on Macintosh computers and AppleTalk networks.

Chapter 2 explains how to print with the RIP software on Macintosh computers.

Chapter 3 tells you how to install the EPSON Stylus RIP on Windows computers and peer-to-peer networks.

Chapter 4 explains how to print with the RIP software on Windows computers.

Chapter 5 gives solutions to possible problems you may have.

An **Index** is included at the end of the book.

Cautions, Notes, and Tips

You'll find this information throughout your manual:



Cautions must be observed to avoid damage to your equipment or to ensure proper operation of your software.



Notes contain important information about your software or hardware.



Tips contain additional hints for printing with EPSON Stylus RIP.

Where To Get Help

EPSON provides technical assistance through electronic support services and automated telephone services 24 hours a day. The following tables list the contact information:

Electronic support services

Service	Access
World Wide Web	From the Internet, you can reach EPSON's Home Page at http://www.epson.com .
EPSON Internet FTP Site	If you have Internet FTP capability, use your Web browser (or other software for FTP downloading) to log onto ftp.epson.com with the user name anonymous and your e-mail address as the password.
EPSON Forum on CompuServe®	Members of CompuServe can type GO EPSON at the menu prompt to reach the Epson America Forum. For a free introductory CompuServe membership, call (800) 848-8199 and ask for representative #529.

Automated telephone services

Service	Access
EPSON SoundAdvice SM	For pre-recorded answers to commonly asked questions about EPSON products 24 hours a day, seven days a week, call (800) 992-8911 .
EPSON FaxAdvice TM	Access EPSON's technical information library by calling (800) 992-8911 . You must provide a return fax number to use this service.
EPSON Referral Service	For the location of your nearest Authorized EPSON Reseller or Customer Care Center, call (800) 992-8911 .

To speak to a technical support representative, please refer to your printer's user's guide for your printer's specific technical support telephone number.

Before you call, please have the following information ready:

- ▶ Product name (EPSON Stylus RIP)
- ▶ Product serial number (located on disk sleeve)
- ▶ Printer model
- ▶ Computer configuration
- ▶ Description of the problem

You can purchase ink cartridges, paper, manuals, and accessories from EPSON Accessories at **(800) 873-7766** (U.S. sales only). In Canada, please call **(800) 807-7766** for dealer referral.

1 *Installing EPSON Stylus RIP for Macintosh*

This chapter provides instructions for installing the EPSON Stylus RIP software on a standalone Macintosh or the print server Macintosh in a network. You can then install the PostScript printer driver and PPD (PostScript Printer Description) on any client Macintosh computers on your network, as described on page 1-8.

Here's what you need to do to install EPSON Stylus RIP:

- ▶ Check the printer's setup and operation.
- ▶ Determine your system/network configuration.
- ▶ Install the EPSON Stylus RIP server software on your standalone Macintosh or on the print server in a network.
- ▶ Install the EPSON Stylus RIP client software on any client Macintosh computers in your network.
- ▶ If you need to match PANTONE colors, be sure to read the instructions on page 1-10 for using your printer's PANTONE color table.

Checking the Printer

Before you install the EPSON Stylus RIP software, follow the instructions in your printer's setup guide and user's guide to prepare your printer for use. Make sure you perform the following steps:

- ▶ If you'll be using the printer in a "typical" network configuration (described in the following section), install an optional network interface card in the printer. (Not every printer has a network interface card option.) See your printer's user's guide for instructions.
- ▶ Load paper, install ink cartridges, and allow your printer to complete its entire ink charging cycle.
- ▶ Run a printer self test to make sure it operates properly.
- ▶ Connect the printer directly to your Macintosh or to the network.
- ▶ Install the standard non-PostScript EPSON driver and utilities that came with your printer.
- ▶ Send a sample print job with the standard printer driver to make sure the interface connection and cable are secure and the software is installed correctly.

Once the printer is set up and **tested fully**, you're ready to install the EPSON Stylus RIP software on your system.

Determining Your Configuration

You can connect your printer and use Stylus RIP in three different configurations:

- ▶ Standalone
- ▶ Direct connection network
- ▶ Typical network

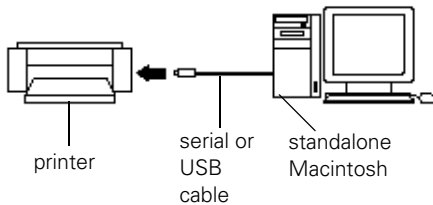
The standalone or direct connection network configurations are recommended for best performance.



Note:
AppleTalk must be active in order to use Stylus RIP in all configurations, including a standalone system.

Standalone Configuration

In a standalone system (shown below), your printer is connected directly to your Macintosh by a standard serial (or USB, for SC900/SP1200) cable, as shown below:



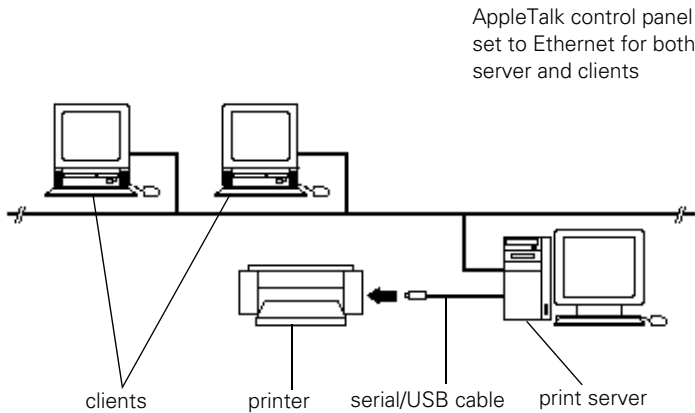
AppleTalk control panel set to Remote Only

In this configuration, you install the EPSON Stylus RIP Server software on your Macintosh system, which then acts as both server and client in your printing process.

Direct Connection Network Configuration

In a direct connection configuration (shown below), the Macintosh that is connected to the printer acts as the print server, with the EPSON Stylus RIP Server software installed on it. The printer is directly connected to the print server's printer, modem, or USB port (SC900/SP1200).

The other computers in the network are "clients" of the server, with the EPSON Stylus RIP client software installed on them.



In this configuration, the client Macintosh computers send print jobs to the print server, which puts the job in a print queue and then sends it to the printer. This speeds up transmission of the job because it is sent over the network only once, offering you the best EPSON Stylus RIP performance.

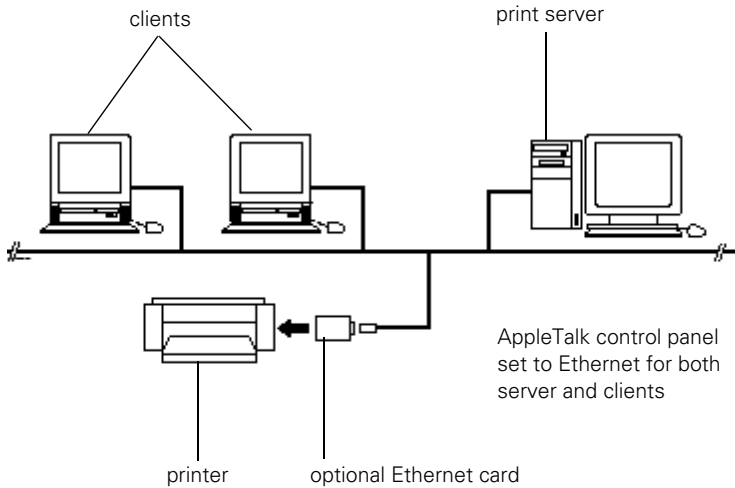
Note:



It is best to choose a Power Macintosh with a fast processor and ample RAM as your print server, allowing you to devote its resources to printing the data sent over the network. LocalTalk networks are not recommended for use with the EPSON Stylus RIP.

Typical Network Configuration

In a typical network configuration, both the print server and all client Macintosh computers are only connected to the printer via an Ethernet connection through an optional network interface card, with the EPSON Stylus RIP software (server or client version) installed on every computer.



In this configuration, the print job is sent over the network twice before it prints: once from the client to the print server and once from the print server to the printer.


Note:

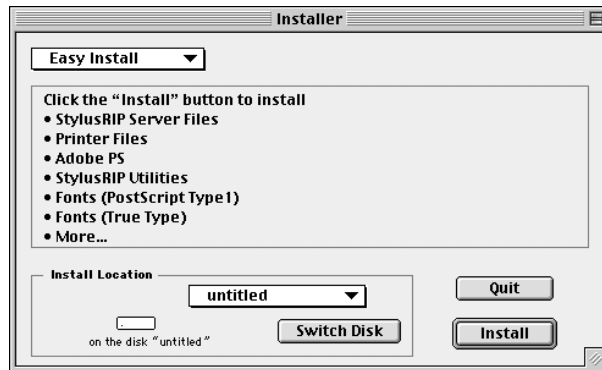


You may experience problems if you have more than one printer on the network in a "mixed" configuration. For example, if you have one EPSON Stylus series printer connected to a serial port and set up as remote only and another connected by an Ethernet card on the same network, you won't be able to set the Network/AppleTalk control panel to Remote Only and Ethernet at the same time.

Installing EPSON Stylus RIP on a Standalone or Print Server Macintosh

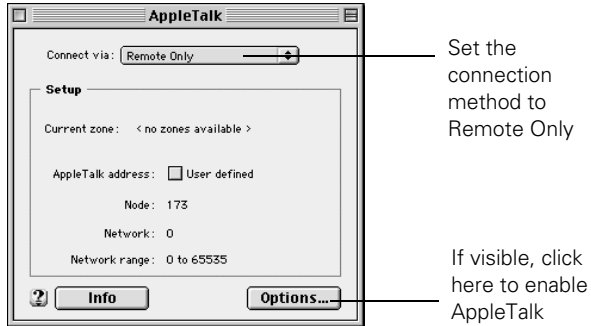
Before you install the EPSON Stylus RIP software, disable all anti-virus or disk utility extensions, and shut down any applications that are running. Then follow these steps:

1. Insert the EPSON Stylus RIP CD-ROM in your drive. If necessary, double-click the Stylus RIP CD-ROM icon to open its window.
2. Double-click the Installer icon in the Stylus RIP window. 
 Installer
3. At the title screen, click Continue.
4. From the Installer dialog box, pick **Easy Install**, specify an **Install Location** to install the RIP into, and click **Install**.



5. Follow the on-screen instructions, then click the **Restart** button when prompted to restart your system. If you aren't prompted to restart your computer, manually restart it yourself.

6. Once your system has restarted, open the AppleTalk control panel by opening the Apple menu and choosing **Control Panels > AppleTalk**.
7. If using a serial connection, choose **Remote Only** from the **Connect via** pop-up menu. If visible, click the **Options** button and make AppleTalk **Active**.



8. Close the AppleTalk control panel.

The EPSON Stylus RIP software is installed on your hard disk. If your computer is not connected to a network, you can skip ahead to the next chapter to start printing via the RIP. If you have client computers that will need to print to the RIP, continue to the next section.



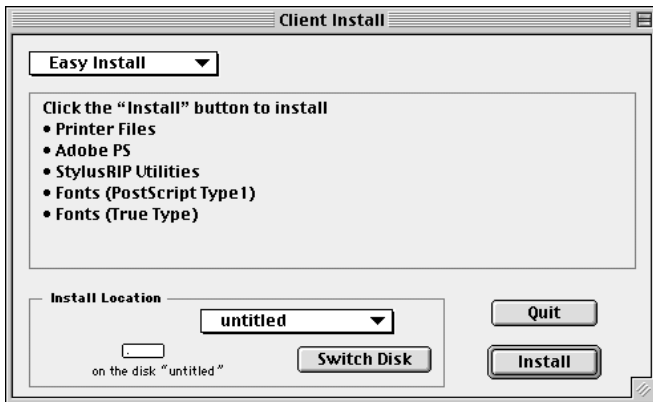
Caution: Once you've installed the EPSON Stylus RIP software, don't move, modify, or delete any of the files or folders that were created on your hard disk, or the software may not work.

Installing EPSON Stylus RIP on a Client Macintosh

Once you've installed the EPSON Stylus RIP Server software on your print server, you can install the Client software on the client Macintosh computer(s) in your network.

Before you install the EPSON Stylus RIP Client software, disable all anti-virus or disk utility extensions, and shut down any applications that are running. Then, follow these steps:

1. Insert the EPSON Stylus RIP CD-ROM in your drive. If necessary, double-click the Stylus RIP CD-ROM icon to open its window.
2. Double-click the Client Install icon in the Stylus RIP window.
3. At the title screen, click **Continue**.
4. From the Client Install dialog box, pick **Easy Install**, specify an **Install Location** to install the RIP into, and click **Install**.



5. Follow the on-screen instructions, then click **Quit** when prompted to finish the installation.
6. Repeat steps 1 through 5 for each client Macintosh that will print with EPSON Stylus RIP over the network.



Caution:

Once you've installed the EPSON Stylus RIP Client software, don't move, modify, or delete any of the files or folders that were created on your hard disk, or the software may not work.

Color Matching

During the EPSON Stylus RIP installation, ICC (International Color Consortium) profiles for ColorSync 2.x support, press simulation profiles, and the PANTONE color table for your printer are automatically installed on your system. These tools allow your printer to work with the other components of your color management system.

Press Simulations

The EPSON Stylus RIP press simulation profiles allow you to output CMYK-defined colors that approximate SWOP and other standard colors on your EPSON printer. When simulating a press run with the Press Simulation feature, your printer's wide color gamut will be reduced to more closely simulate the gamut of SWOP and other printing devices.

However, your EPSON printer is designed for color comping only, and not color proofing. Even with the press simulation feature, true color accuracy is not possible with your EPSON printer and the RIP.

ColorSync 2.x Support

For applications that support ColorSync 2.x, use the ICC profiles that are included with the EPSON Stylus RIP software.

When you install the RIP software, these profiles should automatically be copied to the ColorSync profiles folder in your Preferences folder within the System folder. If the profiles are not copied automatically, you may need to copy them yourself.



Note:

It is recommended that you install a ColorSync profile for all your input/output devices (monitor, scanner, etc.) to achieve successful color matching.

PANTONE Color Support

PANTONE professional color palette files for your printer are included with the EPSON Stylus RIP software. These files can be read directly into PANTONE-licensed applications so you can have printer calibrated versions of PANTONE colors. The colors are calibrated to use the RIP's error diffusion halftoning and EPSON coated paper and photo-quality media.

To install PANTONE color tables for your printer, open the PANTONE folder in the Stylus RIP Utilities folder on your hard drive. Double-click the icon that corresponds to your printer, and follow the prompts to install your printer's PANTONE color table.

For application-specific usage instructions of your PANTONE color table, refer to the "HowToMac" PDF file that is installed with the PANTONE color table. Use the Find command in the Finder's File menu to locate the file on your hard drive.

Every attempt is made to accurately match color values as closely as possible to the PANTONE spot colors. However, no color matching scheme can guarantee an exact match, due to environmental and other characteristics that affect how we perceive color.

For example, a color that appears to be an exact match under incandescent room lighting may appear differently under fluorescent lighting conditions. While many of these factors are accounted for in the process of developing the colors, an exact match is not possible under all visual conditions.



Note:

If Pantone Profiles are not listed for your printer, please visit EPSON'S web site to download them at <http://www.epson.com/>.

2 *Printing with EPSON Stylus RIP for Macintosh*

Once you've installed the EPSON Stylus RIP software on your Macintosh computer(s), you need to set up your server or standalone Macintosh before you can start printing PostScript documents. Once set up, you can print with the RIP by starting the Stylus RIP Server application, selecting the RIP in the Chooser, printing from your application, and then letting the RIP software process your print job and send it to your printer.

You can also use the Stylus RIP window to monitor your print jobs, manage the print queue, or run a batch of print jobs at the same time.

Here's what this chapter covers:

- ▶ Setting up and starting the EPSON Stylus RIP Server software
- ▶ Printing from an application
- ▶ Printing over a network
- ▶ Drag and drop printing
- ▶ Managing print jobs

Setting Up the EPSON Stylus RIP Server


Follow the steps below to set up the EPSON Stylus RIP Server software the first time you use it—you'll need to do this for both standalone and network configurations.

1. Make sure the Stylus RIP Server application has at least 20MB of RAM available. Open the **Stylus RIP** folder on your hard disk, and highlight the **Stylus RIP Server** icon. Choose **Get Info** from the File menu, then set the following Memory Requirements:
 - ▶ Preferred Size 20000K
 - ▶ Minimum Size 16000K



Note:

If you are not running your Macintosh with virtual memory turned on, increase each of the Memory Requirements by 4000K.

2. Disable all desktop printing extensions.
3. Turn on the printer and wait to make sure its power light comes on and the light is not flashing. Make sure the printer is properly connected to your Macintosh or network.
4. Start the Stylus RIP Server application by double-clicking the **Stylus RIP Server** icon.
StylusRIP Server
5. The first time you run the server software, a dialog box asks you to select your port or your printer name. Select the appropriate modem, printer, or USB port (SC900/SP1200 only) if you are connected to the printer via a serial or USB cable.

If you connected the printer via a network interface card and use AppleTalk zones, select the printer's zone and then select the printer name. Or use the **Scan** button to locate the printer on your network.

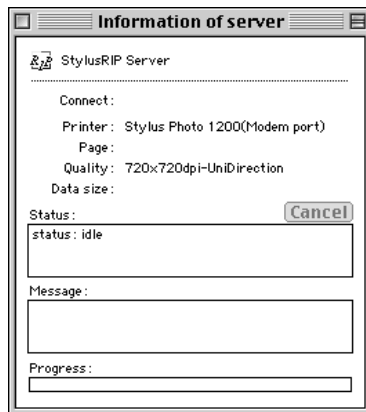
Click **OK** once you select the printer and port.



Note:

If you change your printer connection later, you must reconfigure Stylus RIP for your new port. To do so, start Stylus RIP and select **Printer Connection** from the PostScript menu. When you see the Connection dialog box, select your printer on the new port or interface.

6. If the printer has not been previously licensed for PostScript, or this is the first time you've run the Stylus RIP Server, a dialog box prompts you for your EPSON Stylus RIP license key. (The license is printed on your CD-ROM sleeve.) Type it exactly as shown and click **OK**.
7. The Stylus RIP Server software searches for the printer, checks printer settings and licenses, and then displays the Stylus RIP server window. Leave the window open.

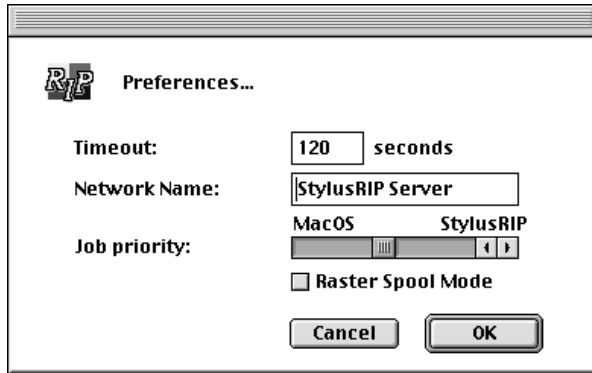


If you're using Stylus RIP on a standalone Macintosh, you're ready to start printing. If you're using Stylus RIP on a network, or if you want to set preferences, follow the steps in the next section to configure the software for your system.

Configuring EPSON Stylus RIP Preferences

To configure the Stylus RIP Server, follow these steps:

1. Open the File menu and select **Preferences**. You see the following dialog box:



2. You can change the following settings:
 - ▶ **Timeout**
This sets the time period when the Stylus RIP Server disconnects from a client Macintosh if there is no response. Default is 120 seconds; maximum is 240.
 - ▶ **Network Name**
This is the name that appears in the Chooser and in the RIP server information window when the server is running.

▶ **Job Priority**

This sets the resource priority given to either the Mac OS or the EPSON Stylus RIP Server application. Move the slide bar all the way to Stylus RIP if you are running it on a standalone server to increase RIP performance.

▶ **Raster Spool Mode**

This checkbox turns the raster image spooling feature on and off—the default setting is off. Raster Spool Mode is recommended only when you frequently print multiple copies of the same page.

In Raster Spool Mode, the Stylus RIP Monitor appears on your screen when you print. See page 2-17 for more information.



Note:

The Timeout, Network Name, and Job Priority settings go into effect when you click OK and exit the Preferences dialog box. However, you must exit and restart the Stylus RIP Server software before a change to the Raster Spool Mode setting can take effect.

3. Click **OK** to accept the changes.

Setting Up the Chooser and PostScript Drivers

Before you can print with the EPSON Stylus RIP software from any Macintosh, both the Chooser and the correct PostScript Printer Definition (PPD) file need to be configured on the Macintosh you are printing from.

You should double-check these settings before printing to the Stylus RIP Server, especially if you regularly print to different printers on a network or save PostScript print files for printing on printers not connected to your network.

To select the proper PPD file and Chooser settings, follow these steps:

1. Turn on your EPSON printer, and if it is connected to a network, turn on the print server Macintosh.
2. Double-click the **Stylus RIP Server** icon in the Stylus RIP folder to start the EPSON Stylus RIP Server. (In a networked environment, the Stylus RIP Server icon is located on the hard drive of the print server Macintosh.)
3. On the Macintosh you wish to print from, open the Chooser in the Apple menu. Click the **AdobePS** icon, and select **Stylus RIP Server** from the printer list. Make sure **AppleTalk** is active, even if you are not connected to a network.

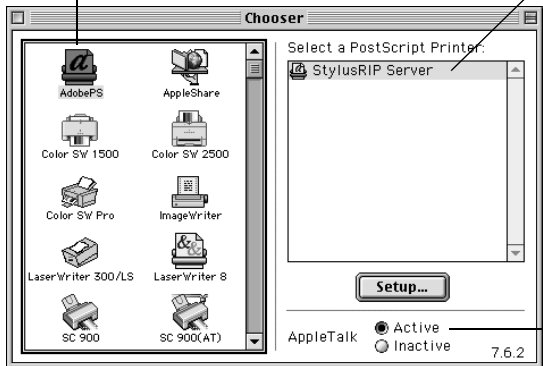


Caution:

You must turn on AppleTalk or the Stylus RIP software will not work, even if you are using a standalone system.

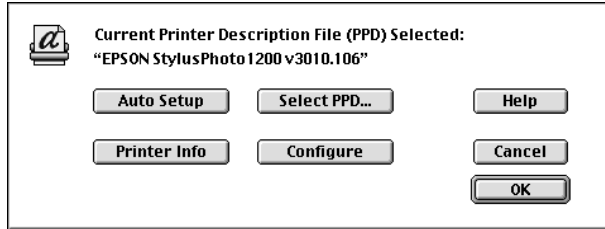
Click the AdobePS icon first...

then select the Stylus RIP Server printer item...

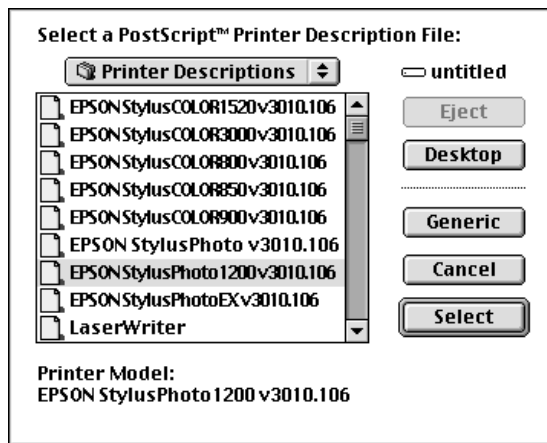
The screenshot shows the Macintosh Chooser window. On the left, there is a grid of printer icons including AdobePS, AppleShare, Color SW 1500, Color SW 2500, Color SW Pro, ImageWriter, LaserWriter 300/LS, LaserWriter 8, SC 900, and SC 900(AT). On the right, a pane titled 'Select a PostScript Printer:' shows 'StylusRIP Server' selected. Below this pane is a 'Setup...' button. At the bottom, there is an 'AppleTalk' section with radio buttons for 'Active' (selected) and 'Inactive', and the version number '7.6.2' is displayed.

then make AppleTalk Active, even if you aren't printing on a network

- From the Chooser, click **Setup** to select the PPD file that corresponds to your EPSON ink jet printer. The following dialog box appears:



- In most cases, clicking the **Auto Setup** button will automatically select the correct PPD file. Click **Auto Setup**. If your printer model appears at the top of this dialog box, click **OK**.
- If your printer model is not displayed, click **Select PPD**. The following dialog box appears:



- Highlight your printer and click **Select**. Then confirm the name and click **OK**. Close the Chooser.

Now you're ready to print a PostScript document from the print server or a client Macintosh. See the following section for printing instructions.



To make starting Stylus RIP easy and to allow you to drag and drop PostScript files for printing, create an alias of the Stylus RIP Server program on your desktop. Click the Stylus RIP Server icon and select Make Alias from the File menu. Then drag the alias icon to your desktop. See page 2-15 for instructions on drag and drop printing.

Printing from an Application

When you want to print PostScript documents, you must first start the Stylus RIP Server software, and then leave it running. In most situations, you should leave it active until you shut down your Macintosh.



Note:

To set up the Stylus RIP Server software so it starts automatically each time you turn on or restart your Macintosh, see page 2-14.

Then, when you send a PostScript print job from your application to the Stylus RIP Server, it processes the PostScript file into a raster image and prints it on your printer. If you send the job from a client Macintosh on a network, the Stylus RIP Client software sends it to the print server Macintosh for processing.



Caution:

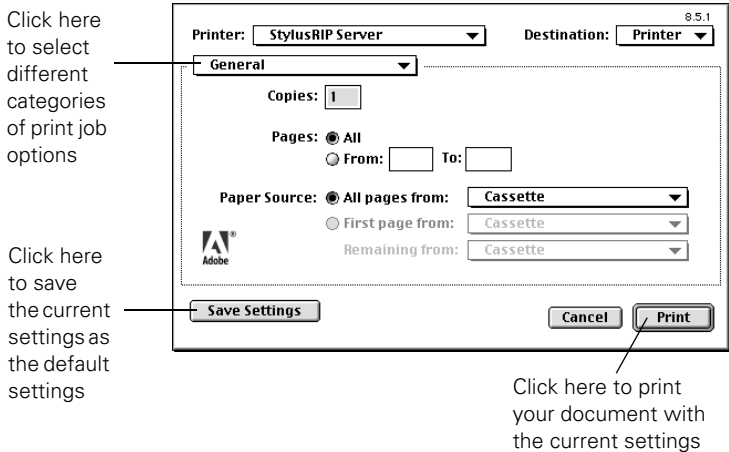
Before printing from an application, make sure the Stylus RIP Server software is set up and running.

If you're printing from a client system, you don't need to have the Stylus RIP software on your Macintosh. Just make sure Stylus RIP is running on the server and **AdobePS** is selected in the client Macintosh's Chooser before you print. See page 2-5 for instructions.

Sending the Print Job

To print a document from an application, follow these steps:

1. Open the document you want to print in your application.
2. Select **Page Setup** from the File menu. The Adobe Page Setup dialog box appears. Set the print options for your document and click **OK**.
3. Once you have set up the page, select **Print** from the File menu. The following dialog box appears:



4. Select the number of copies, page range, and paper source you want. Make sure the Destination option is set to **Printer**, not **File**. Then click **Print**.

If you want to use the “drag and drop” printing method described on page 2-15, select **File** instead, and make sure you print to a “PS,” not “EPS,” file.

To set options for this print job, choose a print job option category from the **General** pop-up menu. See page 2-10.

Once you click **Print**, the application sends the print job to the Stylus RIP Server software for processing and printing.

Setting Print Job Options

Print job options are divided into categories—you access these different categories of options via a pop-up menu that is initially labeled **General**. Certain categories, such as **Background Printing** or **Cover Page**, are common to all PostScript printers and most applications, and are covered in your application's user manual. Settings in other categories, such as **Color Matching** and **Printer Specific Options**, deal specifically with the EPSON Stylus RIP software's abilities, and are covered in the following sections.

Color Matching

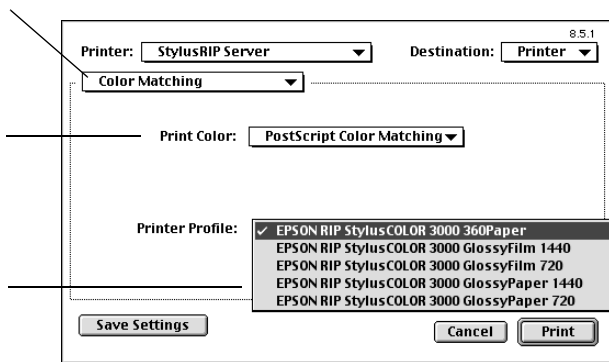
The EPSON Stylus RIP can manage colors in several different ways. Follow these steps to set color matching options:

1. From the Print dialog box, choose **Color Matching** from the print job option category pop-up menu.

Choose Color Matching...

then
choose a
Color
Matching
method...

then
choose a
Printer
Profile



2. Choose one of the following **Print Color** settings:
 - ▶ **Black and White**
Select this setting for faster printing of text and/or line art in black only.
 - ▶ **Color/Grayscale**
Choose this setting for printing without CMYK color correction.
 - ▶ **ColorSync Color Matching**
Choose this setting for color management with ICC profiles. Stylus RIP matches the colors in your printout to the colors displayed on your monitor as closely as possible. In a networked system, ColorSync color correction is performed on the client Macintosh, and must be enabled.
 - ▶ **PostScript Color Matching**
Choose this setting for color management of RGB files or if you're using a press simulation profile. In a networked system, PostScript color matching is performed by EPSON Stylus RIP on the print server.

If you choose one of the color matching options, you must choose a **Printer Profile** to use for matching.

3. If you selected a color matching option in step 2, choose a **Printer Profile** corresponding to the media and resolution (print quality) you want to use, or to the press simulation you want to use.

The available profiles are described below. Be sure to choose one of the media/resolution profiles beginning with **CPS** or one of the press simulation profiles beginning with **EPSON**. These are the only ones that work with Stylus RIP.

The profiles use terms defined as follows:

- ▶ **360P_360**: 360 dpi Ink Jet Paper
- ▶ **GF_1440, GF_720**: Glossy Film at 1440 or 720 dpi
- ▶ **GP_1440, GP_720**: Glossy Paper at 1440 or 720 dpi
- ▶ **PQP_1440, PQP_720**: Photo Quality Ink Jet Paper at 1440 or 720 dpi
- ▶ **EPSON_DIC**: Japanese press standard
- ▶ **EPSON_Euro**: (Euroscale) European press standard
- ▶ **EPSON_SWOP**: (Specifications for Web Offset Publications) U.S. press standard. Choose this profile if you're using the **Press Simulation** option.
- ▶ **EPSON_TOYO**: Japanese press standard



Note:

If you're using one of the Press Simulation options described in the next section, you must choose the corresponding Press Simulation profile listed above.

Printer Specific Options

Follow these steps to set media quality and type, ink, and Press Simulation options if you selected Printer Specific Options from the **Print** dialog box:

1. Set the **Media(Quality)** option corresponding to the media you're printing on and the resolution (print quality) you want to use.

See your printer's user's guide for more information about Media Type and Print Quality settings. If you're using color matching, make sure the **Media(Quality)** setting you choose corresponds to your **Printer Profile** setting.

2. Set the **Ink** option to **CMYK** (the default setting) for color or **Grayscale**.
3. Choose one of the **Press Simulation** settings if you want your colors to more closely match those of SWOP printing devices or other standards.

If you use one of the press simulation options, you must choose the corresponding profile (see page 2-11), and print on coated or photo quality media. Your choices are:

- ▶ **SWOP-coated** (Specifications for Web Offset Publications, U.S. press standard for coated paper)
- ▶ **Euro** (Euroscale, European press standard)
- ▶ **DIC** (Japanese press standard)
- ▶ **Off** (Printer's default)

4. If you have an EPSON Stylus COLOR 1520 or 3000 printer, or an EPSON Stylus Photo 1200, choose one of the following for the **Paper Options**:
 - ▶ **Print Using Roll Feed Media**
Make sure you choose this setting when you're printing on roll paper; otherwise, the printer will eject the entire roll of paper.
 - ▶ **Print Using Cut Sheet Media** (printer's default)
Make sure you choose this setting when you're printing on single sheets of paper; otherwise, the top and bottom edges of your image may be clipped.
5. To send the print job to the Stylus RIP Server with the selected options, click **Print**. To make your settings the future default settings, click **Save Settings**.

Starting the EPSON Stylus RIP Server Software Automatically



Note:

Because the Stylus RIP Server software uses a lot of system resources, you may want to start it automatically only on a print server that is dedicated to printing PostScript documents.

Follow these steps to set up the Stylus RIP Server software so it starts automatically each time you turn on or restart your standalone Macintosh or print server:

1. Turn on the printer and the standalone or print server Macintosh.
2. Click the **Stylus RIP Server** icon in the Stylus RIP folder to select it.
3. Choose **Make Alias** from the File menu. The software creates a **Stylus RIP Server alias** icon in your Stylus RIP folder.
4. Drag the **Stylus RIP Server alias** icon to your desktop.
5. Open the System folder and locate the Startup Items folder.
6. Drag the **Stylus RIP Server alias** icon into the Startup Items folder.

When you restart your system, the Stylus RIP Server software starts automatically. To cancel automatic startup of the Stylus RIP Server software, remove its alias icon from the Startup Items folder and restart your Macintosh.

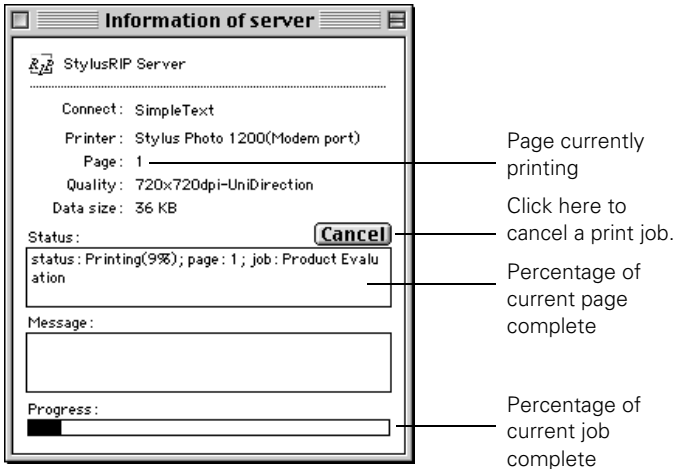
Drag and Drop Printing

Drag and drop printing allows you to create PostScript print job files and then drag them to the RIP Server when you're ready to print. During drag and drop printing, you can close all other applications so your Macintosh can print as quickly as possible with the maximum system resources available. You don't even have to have the Stylus RIP Server application open before you start. Follow these steps:

1. Open a document as usual and set your Page Setup options.
2. Select **Print** from the File menu.
3. In the Print dialog box, set the **Destination** to **File**.
4. Click the **General** pop-up menu and choose **Save as File**.
5. Select any **PostScript Level** type, set the **Data Format** to **Binary**, and choose **Include All** fonts.
6. Set any other options you want to use and click **Save**.
7. If necessary, choose the folder where you want to save the print file.
8. After your file is created, simply drag it to the **Stylus RIP Server** alias icon. The RIP opens (if it's not already open) and begins processing your file or files. You can continue to drag and drop multiple files, and they will be processed in the order in which they were dropped.

Managing Print Jobs

While your job is printing, the Server Information window displays the following information: (If you don't see this window, select **Show window** from the PostScript menu.)



You can use the information in the window to track the progress of your print job. If a problem occurs during printing, you'll see the error displayed in the Message area.

To cancel a print job, click the **Cancel** button on the screen, or press the **⌘** and **.** (period) keys on your keyboard.

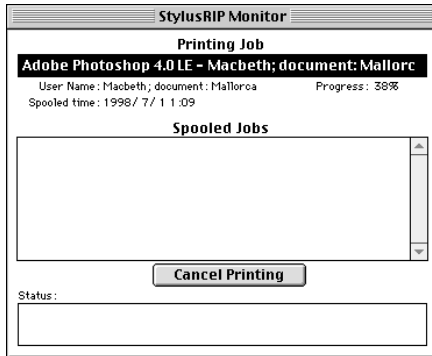
Using the Stylus RIP Monitor

If you're running the EPSON Stylus RIP on a network, you can use the Stylus RIP Monitor to manage your print jobs from each client Macintosh. You must have Raster Spool Mode turned on to use the Stylus RIP Monitor.

Follow these steps to turn on Raster Spool Mode:

1. Choose **Preferences** from the File menu of the Stylus RIP Server software.
2. Check **Raster Spool Mode** and click OK.
3. Exit and restart the Stylus RIP Server software for this mode to take effect.

The Monitor starts automatically after a print job is processed. In the Monitor window you can see a list of spooled print jobs and the status of the job that's currently printing.



If you don't see the Stylus RIP Monitor, select **Show window** from the File menu. To cancel a print job that is already spooled and waiting to be printed, select the job and click **Cancel Printing**.

3 *Installing EPSON Stylus RIP for Windows*

This chapter provides instructions for installing the EPSON Stylus RIP software and accompanying PostScript driver on your Windows 95/98 or NT system. Even if you already have other PostScript printer drivers, you need to install AdobePS 4.2 (Windows 95/98) or 5.0 (NT 4), which is included on the EPSON Stylus RIP CD-ROM. AdobePS 4.2 and 5.0 provide several new features and greater support for many popular applications.

Here's what you need to do to completely install the RIP:

- ▶ Check the printer's setup and operation.
- ▶ Install the EPSON Stylus RIP software on your computer.
- ▶ Install the Adobe PostScript 4.2 or 5.0 driver, depending on your operating system.
- ▶ If your applications use ICM (Image Color Matching) and you need this type of color matching, make sure the ICC (International Color Consortium) profiles are copied to the correct folder.
- ▶ If you need to match PANTONE colors, be sure to read the instructions on the PANTONE PDF file, located at:
C:\Program Files\EPSON\PANTONE\

Note:



If you're planning to use the EPSON Stylus RIP on a peer to peer network, you need to install the RIP software on the print server only. However, you must install the Adobe PostScript driver and a PPD on all computers that will print to the RIP.

Checking the Printer

Before you install the EPSON Stylus RIP software, follow the instructions in your printer's setup guide to set up your printer for use, making sure you perform the following steps:

- ▶ Load paper, install ink cartridges, and allow your printer to complete its entire ink charging cycle.
- ▶ Connect the printer to your computer via a parallel cable and your computer's LPT1 port.
- ▶ Install the standard non-PostScript EPSON driver and utilities that came with your printer.
- ▶ Send a sample print job with the standard driver to make sure the interface connection and cable are secure and software is installed correctly.

Once the printer is set up and **tested fully**, you're ready to install the EPSON Stylus RIP software on your system.

Installing the EPSON Stylus RIP Software

Before you start, make sure Windows is running and all applications on your system are closed. Turn off all virus protection and disk-monitoring software, following the instructions included with your utility software or your Windows documentation.


Note:



The installation options you choose in the setup program to install EPSON Stylus RIP on a Client computer will be different than the ones you choose for a standalone or Server computer.

Follow these steps to install the RIP and driver on your computer:

1. Insert the EPSON Stylus RIP CD-ROM in your drive.
The install program starts automatically.

If it doesn't start automatically, double-click **My Computer**. Then double-click the Stylus RIP icon. 

2. Choose your printer model from the Installer dialog box and click **Install**.

If you are installing the RIP on a Client computer, click **Exit** and skip ahead to installing the PostScript driver on page 3-4.



3. At the introductory screen, click **Next**. Then choose an installation directory for the EPSON Stylus RIP by clicking **Browse**, or click **Next** to accept the default installation location.



4. Once the EPSON Stylus RIP files are installed on your system, you see a dialog box telling you that setup is complete. Click **Finish** to complete this portion of the RIP installation.

Once the EPSON Stylus RIP Installer is finished, the Adobe PostScript 4.2 or 5.0 setup program starts automatically. Follow the steps in the next section to install the PostScript driver.

Installing the PostScript Driver

After you install the Stylus RIP software, the AdobePS 4.2 or 5.0 setup program starts automatically. Follow these steps:

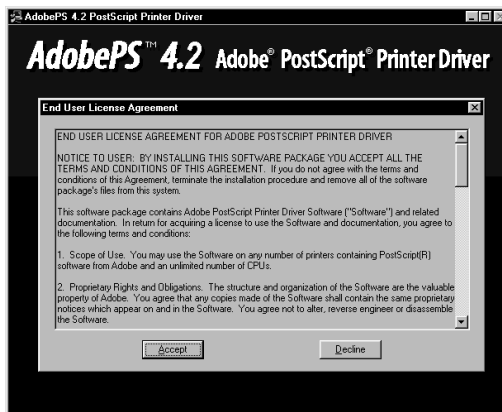
Note:



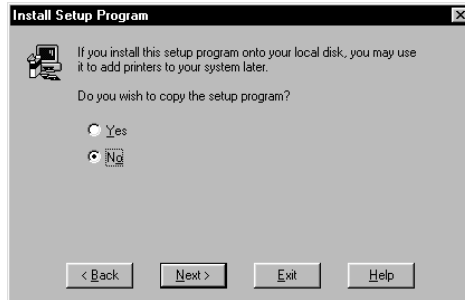
If the Adobe PostScript installer doesn't start automatically, you'll need to manually run the Adobe setup program from the EPSON Stylus RIP installation CD. It is located at:

Windows 95/98: (CD-ROM drive):/Driver95/SETUP.EXE
Windows NT 4.0: (CD-ROM drive):/DriverNT/SETUP.EXE

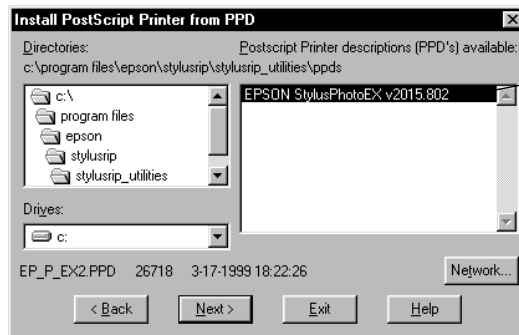
1. The AdobePS setup program displays its license agreement first. Read the agreement and click **Accept** to accept its terms.



2. At the first setup screen, click **Next**. (You can click **Read** to display the Readme file at this point if you wish.)
3. The program then asks if you want to copy the Setup program to your hard disk. Select **No** and click **Next**.



4. At the Printer Type dialog box, choose **Local Printer**, then click **Next**.
5. At the Install PostScript Printer from PPD dialog box, highlight the PPD file that corresponds to your printer model and click **Next**.



Note:
If the dialog box doesn't initially display any PPD files that correspond to your printer, open this folder from My Computer:
C:\Program Files\EPSON\Stylus RIP\Stylus RIP_Uilities\PPDS.

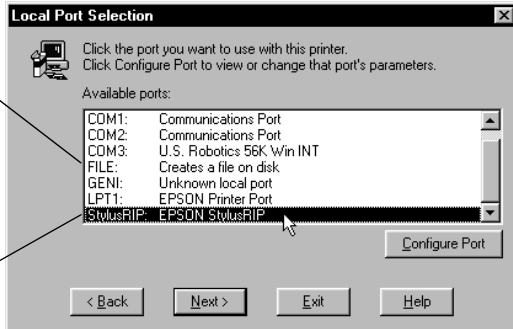
- At the Local Port Selection dialog box, highlight one of the following:

On a standalone system or print server, select Stylus RIP: EPSON Stylus RIP and click Next.

On a client computer, select FILE and click Next.

For client computers, select FILE

For standalone systems or print servers, select Stylus RIP

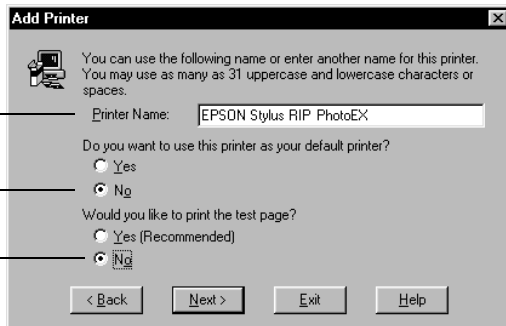


- At the Add Printer dialog box, click both NO radio buttons. Otherwise, your printer may output pages of code. Give the RIP printer a descriptive name to make it appear different than the standard driver. Then click Next.

Give the RIP printer driver a descriptive name

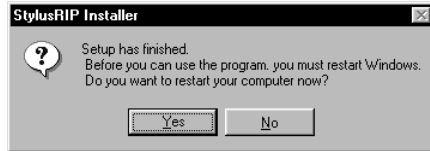
Do not make your printer the default

Do not print the test page



- At the printer properties dialog box, click OK to accept the default settings.

9. Once the PostScript driver is installed, the Setup program asks if you want to add another PostScript printer to your system. Click the **Exit** button to stop adding PostScript drivers.
10. When you see a message that installation is complete, click **Yes** to close the Setup program and restart the system automatically.



Once the system restarts, the EPSON Stylus RIP software and PostScript driver are successfully installed. If you aren't printing in a networked environment, you can jump ahead to Chapter 4 to begin printing with the RIP.

Note:



If you use PageMaker 6.0 or 6.5, you also need to copy your printer's PPD file to a PageMaker folder. Copy your EPSON printer's PPD file from the Windows\System folder to C:\PM6\RSRC\USENGGLISH\PPD4.

Installing the PostScript Driver on Client Computers

You can use the EPSON Stylus RIP in a Windows 95/98 or Windows NT peer to peer network by connecting your EPSON ink jet printer to the print server's parallel port, and then directing the other systems (the "client computers") to generate PostScript print files with the PostScript driver and save them to a shared directory. The RIP software monitors this shared directory for PostScript print files, and prints the document automatically.

To set up EPSON Stylus RIP for this networked environment, install the RIP software on the print server as described in the previous section, and then install only the PostScript printer driver on the client computers on the network.

Follow these steps to only install the PostScript printer driver on client computers:

1. Insert the EPSON Stylus RIP CD-ROM in the drive. The install program starts automatically.



Note:

If the Adobe PostScript installer doesn't start automatically, you'll need to manually run the Adobe setup program from the EPSON Stylus RIP installation CD. It is located at:

Windows 95/98: (CD-ROM drive):/Driver95/SETUP.EXE

Windows NT 4.0: (CD-ROM drive):/DriverNT/SETUP.EXE

2. When the Stylus RIP Installer dialog box appears, click **Exit**. The Adobe PostScript 4.2 or 5.0 Setup program starts automatically.



Do not select a printer when installing the software on a workstation. Click **Exit** to only install the PostScript driver.

3. Follow the instructions beginning on page 3-4 to install the PostScript driver.

Color Matching

During the EPSON Stylus RIP installation, the ICC profiles and PANTONE color table for your printer are installed in the Stylus RIP utilities folder.

ICC Support

For Windows 95/98 and Windows NT 4 ICM support, use the ICC profiles that are included with the EPSON Stylus RIP software. (Your application must also support Windows color matching to use ICC profile information.)

When you install your the EPSON Stylus RIP software, these profiles are copied into the Stylus RIP Utilities folder (Program Files\EPSON\Stylus RIP\Stylus RIP_Uutilities\ICC_PROFILE).

To use the profiles with Windows 95, you must manually copy the profiles to the following folder:

C:\Windows\System\Color. Under Windows 98 and Windows NT 4, the profiles are automatically copied to the appropriate folders when you install Stylus RIP. For more information, see the Readme file in the **Program Files\EPSON\Stylus RIP\Stylus RIP_Uutilities\ICC_PROFILE** directory.



Note:

You should install an ICC profile for all your input/output devices to achieve successful color matching. In addition, you may need to copy your profiles to other locations depending on the applications you use. Refer to your application's documentation for instructions on using ICM.

PANTONE Color Support

PANTONE professional color palette files for your printer are included with the EPSON Stylus RIP software. These files can be read directly into most PANTONE-licensed applications so you can have printer-calibrated versions of PANTONE colors. The colors are calibrated to use Stylus RIP's error diffusion halftoning on EPSON coated paper and photo-quality media.

Note:



For installation and application-specific usage instructions, refer to the "Howto.pdf" file in the following folder:

**Program Files\EPSON\Stylus RIP\Stylus RIP_Uilities\
PANTONE*<your printer's name>*\CoatedPaper720**

Every attempt is made to accurately match color values as closely as possible to the PANTONE spot colors. However, no color matching scheme can guarantee an exact match, due to environmental and other characteristics that affect how we perceive color.

For example, a color that appears to be an exact match under incandescent room lighting may appear differently under fluorescent lighting conditions. While many of these factors are accounted for in the process of developing the colors, an exact match is not possible under all visual conditions.

4 *Printing with EPSON Stylus RIP for Windows*

Once you've installed the EPSON Stylus RIP software on your computer(s), you're ready to print in PostScript. To print with the EPSON Stylus RIP, you need to start the RIP, set printing options, print from your application, and let the RIP process your print job and send it to your printer. You can then use the EPSON Stylus RIP window to monitor your print jobs, manage the print queue, or run a batch of print jobs at the same time.

Here's what this chapter covers:

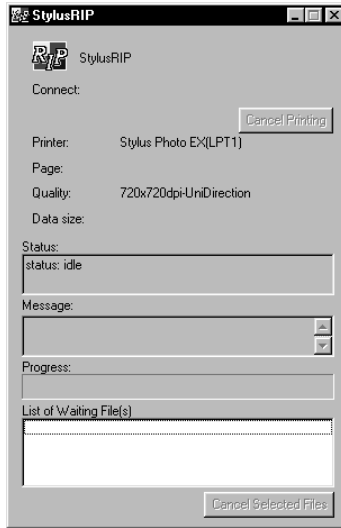
- ▶ Printing from a Windows application
- ▶ Setting printer and output options
- ▶ Managing print jobs
- ▶ Printing over a network
- ▶ Configuring the EPSON Stylus RIP application

Printing from an Application

When you want to print PostScript documents, you must first start the EPSON Stylus RIP software. Then you print via the PostScript driver, which automatically stores your print job as a file on your hard disk. The RIP then automatically processes the print job and sends it to your printer.

Starting EPSON Stylus RIP

To start the EPSON Stylus RIP software, click **Start**, **Programs**, **Epson**, and click **Stylus RIP**. The program checks your printer, and then opens the Stylus RIP window:



This window displays the progress of your print job(s) as they are processed and allows you to cancel them. For more information, see page 4-9.



Note:

If the printer has not been previously licensed for PostScript, or if this is the first time you've run Stylus RIP, a dialog box prompts you for your Stylus RIP license key. It can take up to 30 seconds to check a printer for its license. (The license key is printed on your CD-ROM sleeve. Type it exactly as shown and click OK.)

Printing with the Default Options

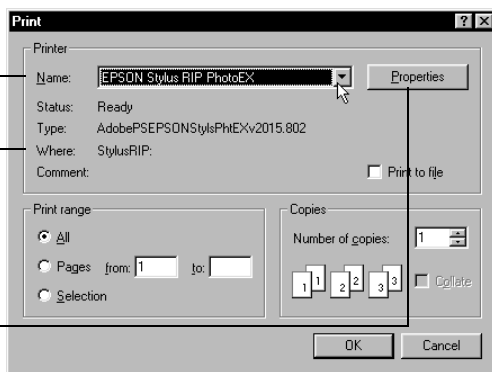
Printing with the RIP is a straightforward process if you don't need to adjust printer or printout options, and are printing from the computer the printer is directly connected to. To print with the RIP with the default options enabled, make sure your printer is on, and follow these steps:

1. Open a document and choose **Print** from the application's **File** menu.
2. Choose the **EPSON Stylus RIP** printer driver from the print dialog box. The **Where** field changes from **LTP1** to **Stylus RIP** or **File**.

Select the EPSON Stylus RIP printer driver here...

The printer port changes from LPT1 to Stylus RIP or File

Click here to change any print job or printer options



3. If you want to change any printer options before printing, see the next section for instructions.
4. If you're ready to print with the default options, click **OK**.

After a few moments, the Stylus RIP window displays its print queue and printer status messages, and then sends the document to your printer. See page 4-9 for details.

Printing and Setting Printer Options

You can change several printer options, such as paper size and type, printer resolution, or specific PostScript options before you print.

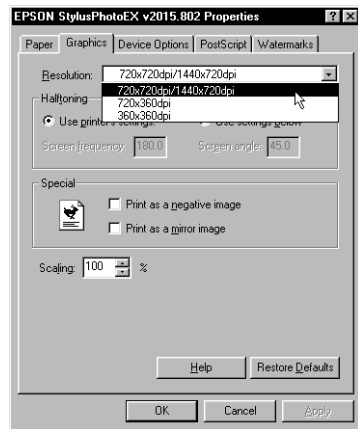
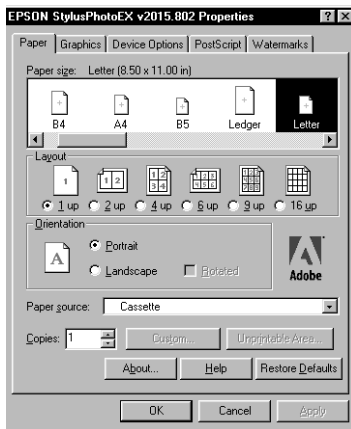


Note:

The actual Properties dialog boxes differ between Windows 95/98 and Windows NT, but each allows you to change the same options.

Follow these steps:

1. Open a document and choose **Print** or **Print Setup** from the File menu.
2. Select the **Epson Stylus RIP** printer driver from the Name menu and click **Properties**.
3. In Windows 95/98, you select printer options from three different tabs: Paper, Graphics, and Device Options.

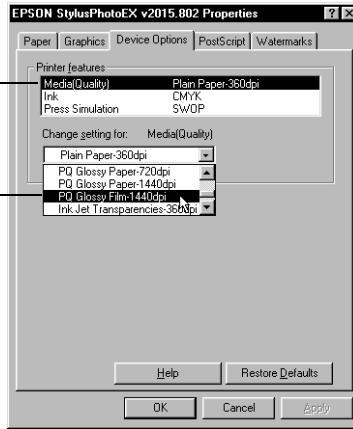


The Paper tab is the default tab, and is where you can specify the desired paper size, layout, orientation, paper source, and copies for your print job. The Graphics tab lets you specify any PostScript scaling or special effects. (The Resolution menu has no effect.)

The Device Options tab, shown below, lets you select the type of media (paper) and desired resolution, ink color mode, and press simulation mode.

Choose the feature
you want to set here

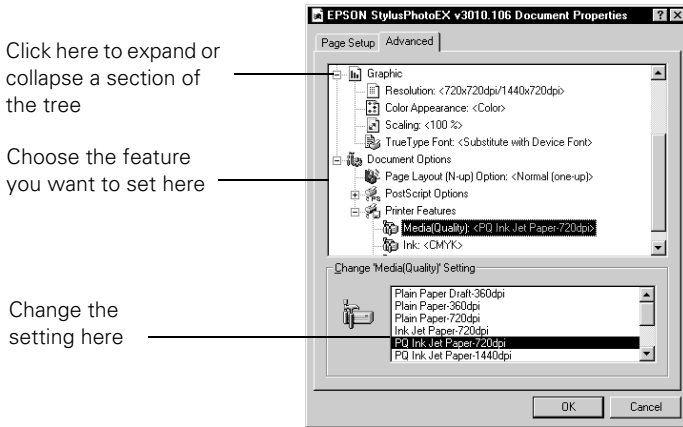
Change the
setting here



Note:

To make the settings in these dialog boxes your default settings for future printouts, open the Properties dialog box from the Printers control panel instead of from your application. Right mouse click a printer in the Printers control panel and choose Properties from the pop-up menu.

In Windows NT, all printer and print job options are under the Advanced tab via a menu tree:



To change options in both the Windows 95/98 and Windows NT Properties dialog boxes, the procedure is essentially the same. First, you click the feature you want to change in the upper portion of the dialog box, and then choose the setting for that feature from the lower portion. In the Windows 95/98 Device Options tab, you need to pull down the **Change setting** for menu to select the setting—in Windows NT your choices are in the **Change Setting** scrolling list.

For a description of the Paper and Graphics tab's settings, click **Help** within these tabs. For a description of the Device Options tab's settings and features, see page 4-7.

4. When you're finished selecting options, click **OK**. Then click **OK** at the **Print** dialog box to print.

Selecting Device Options/Printer Features

The Windows 95/98 Device Options tab and the Windows NT Printer Features section let you set up your document for printing at different resolutions, on different media types, and with different PostScript effects. You can change the following printer options:

1. Set the **Media(Quality)** option to correspond to the paper you're printing on and the resolution (print quality) you want to use. See your printer user's guide for more information about Media Type and Print Quality settings.
2. Set the **Ink** option to **CMYK (color)** or **Grayscale**, depending on whether you want color or black and white output.
3. If you have an EPSON Stylus COLOR 1520 or 3000 printer, or an EPSON Stylus Photo 1200 printer, choose one of the following **Paper Options**:
 - ▶ **Print on roll paper**
Choose this setting when you're printing on roll paper; otherwise, the printer will eject the entire roll of paper.
 - ▶ **Print on single sheets**
Choose this setting when you're printing on single sheets of paper; otherwise, the top and bottom edges of your image may be clipped.
4. If you are printing with CMYK color data and you want your printer's output to match the SWOP, Euro, or DIC standards of offset printing color separations, choose the appropriate standard as the **Press Simulation** setting. You have the following choices:
 - ▶ **SWOP** (Specifications for Web Offset Publications, the U.S. standard for coated paper)

- ▶ Euro (Euroscale, European press standard)
- ▶ DIC (Japanese press standard)
- ▶ Off (the default setting)



Note:

The color of printouts can look different depending on lighting and paper selection. The Press Simulation feature assumes you are looking at printouts under light with a correlated color temperature of 5000K[°] and that were printed on either 360 dpi Ink Jet Paper, Photo Quality Ink Jet Paper, Photo Paper, or Photo Quality Glossy Film.

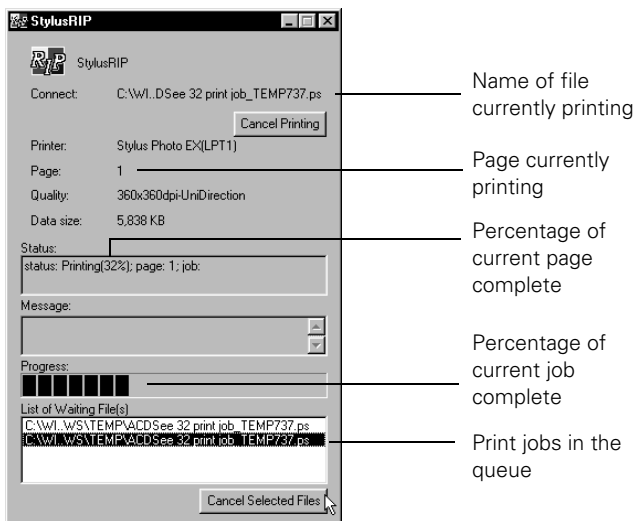


Caution:

Some applications, such as PageMaker 6.5, Illustrator 7.0, or QuarkXPress 3.3 with HELIOS ColorSync2 XTension, can also be used for color management. If you use these programs' color management functions while a Press Simulation mode is selected, you may get unpredictable results.

Managing Print Jobs

While your job is printing, the following information appears in the Stylus RIP window:



If a problem occurs during printing, you'll see the error indicated in the Message area. If you run out of paper or ink, for example, Stylus RIP displays an error message in this area and holds the print job. After you correct the problem, Stylus RIP releases the job.

To cancel a job that is currently spooling, click **Cancel Printing**.

To remove a job that is waiting in the queue, select the file or files from the list at the bottom of the window and click **Cancel Selected Files**.

Batch Printing

In addition to having the RIP process print jobs as soon as they are created, you can also create print jobs and hold them in a queue so you can print them at a later time. This allows you to close other applications, permitting your computer to print as quickly as possible with the most system resources available. Stylus RIP can handle several print jobs at once, processing and printing them in the order they were received.

To perform batch printing, follow these steps:

1. Close the Stylus RIP window.
2. Print via your EPSON Stylus RIP printer driver from your application as described on page 4-3. Each job you send enters the queue automatically.
3. When you're ready to print, launch the EPSON Stylus RIP software. The RIP finds the queued print jobs and starts spooling them automatically.

On client computers, you direct print jobs to a folder other than the shared print queue directory, and then manually copy the files to the queue when you want to print them. See page 4-13 for details.



Caution:

Although you can run print jobs when your computer is idle (during lunch hour, for example), you should not leave your printer operating unattended for long periods of time.

Network Printing

By taking advantage of the EPSON Stylus RIP's ability to automatically scan a directory for print jobs, you can use the RIP to share your printer over a Windows peer to peer network. All you need to do to print over the network is enable file sharing for the RIP's print queue directory, and then send print jobs to this directory via the network.

You can use this file sharing feature between Windows 95/98 and/or Windows NT computers within the same Workgroup, provided that both file sharing and printer sharing are enabled in your network setup. Each computer must have the Adobe PostScript printer driver installed, but only the print server (the computer to which the printer is directly connected) needs to have the EPSON Stylus RIP software installed.

Users printing from applications running directly on the print server do not need to do anything differently to print to the shared printer. Users printing from applications running on client computers need to direct their PostScript output to a file on the shared folder on the print server.

Enabling File and Print Sharing

Follow these steps to enable sharing for the RIP's print queue directory:

1. Enable Windows File and Printer Sharing via the Network control panel on the print server. (See your Windows Help file for instructions.)

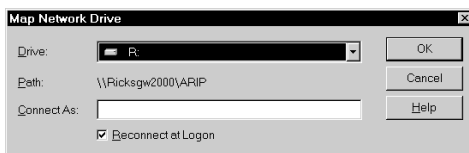
2. Locate the folder where print files are queued for processing. Though the default location is **C:\Windows\Temp** on the print server's hard drive, this can be changed. See page 4-15 for details on viewing or changing the print queue directory location.
3. Right-click the specified print queue folder icon and select **Sharing** from the pop-up menu.
4. Click **Shared As**, enter a **Share Name**, enable **Write Permission** or **Full Access**, and select any other options you want to use. Click **OK** to accept the changes.

Connecting the Client Computers

Once the printer queue directory is a shared folder on the server, each of the client computers needs to connect to it. Windows provides several methods for connecting to a shared directory; the following steps highlight one of the simplest methods:

1. Double-click the **Network Neighborhood** icon on the client computer's desktop.
2. Double-click the computer to which the printer is connected.
3. Right-click the shared print queue folder and choose **Map Network Drive**.

4. Select a **Drive Letter** (such as **R**) and check the **Reconnect at Login** checkbox. Click **OK**.

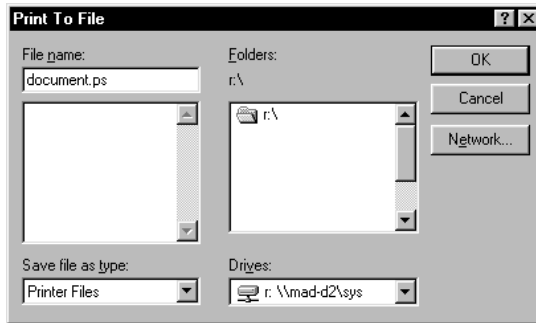


Sending Print Jobs from Client Computers

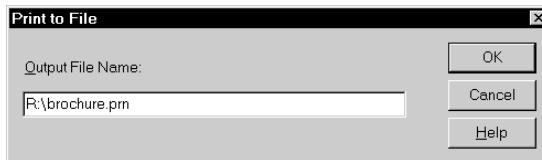
Once the shared print queue directory is accessible from a client computer, you print to the RIP by sending print files to the mapped drive letter. Follow these steps to print to the RIP from a client computer:

1. Open a document and choose **Print** from the application's **File** menu.
2. Choose the **EPSON Stylus RIP** printer driver from the **Name** menu. Set any print job or printer options by clicking **Properties**, as described on page 4-4. Click **OK**.
3. Since the client computer's PostScript driver is set to print to a file (as described on page 3-4), the **Print to File** dialog box appears.

- From Windows 95/98, choose the drive letter to which you mapped the shared print queue from the **Drives** menu. For example, if you mapped the shared print queue directory to R, choose R. Enter a filename for the print job in the File name box with a .ps or .prn file extension.



From Windows NT, type the drive letter to which you mapped the shared print queue in the **Output File Name** box, followed by a colon and backslash. Then enter a filename for the print job. For example, if you mapped the shared print queue directory to R, type R:\filename.ext (where **ext** is .ps or .prn).



Note:

You must name all print job files with either a .ps or .prn extension, or the EPSON Stylus RIP server won't recognize the file as a document to be printed.

- Click **OK** to send the print job.

Configuring EPSON Stylus RIP

You can configure the following two preference settings for the EPSON Stylus RIP software:

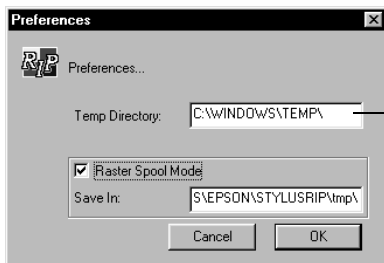
- ▶ For convenience in printing from your applications, you can change the default folder where Stylus RIP looks for print files to process.
- ▶ If you frequently need to print multiple copies of the same document, you can increase your printing speed by turning on Raster Spool Mode.

You can also configure the RIP to launch itself automatically when Windows starts.

Setting EPSON Stylus RIP Preferences

Follow these steps to set EPSON Stylus RIP preferences:

1. Start Stylus RIP as described on page 4-2.
2. Click the icon in the upper left corner of the Stylus RIP window to display the Control menu.
3. Select **Preferences**. The Preferences dialog box appears:



If you want to use a different folder to queue your print jobs, enter it here

- ▶ Type a new path for the **Temp Directory** if you want to change the folder where the RIP looks for print files to process. (You must first create this folder in Windows.)
 - ▶ Click **Raster Spool Mode** if you want to enable it. Type a path for the raster files to change the folder where Stylus RIP saves them (if you have more space on another drive, for example). Raster Spool Mode speeds the printing of documents where you specify multiple copies of the same page.
4. Exit Stylus RIP and restart it to have your changes take effect.

Starting Stylus RIP Automatically

If you use EPSON Stylus RIP regularly, you can set it up to start automatically whenever you turn on your computer. Follow these steps:

1. Double-click the **My Computer** icon on your desktop.
2. Locate the Stylus RIP icon in the following folder:
C:\Program Files\Stylus RIP.
3. Right-click the icon and choose **Create Shortcut** from the pop-up menu.
4. Move the shortcut into the C:\Windows\Start Menu\Programs\StartUp folder, or wherever the startup folder is located on your system.

Now whenever Windows starts, the RIP starts automatically.

5 *Troubleshooting*

This chapter describes solutions to some of the problems you might encounter with the EPSON Stylus RIP software. Many problems can be solved by making sure the printer is turned on and properly connected to your computer or network before you start the Stylus RIP software, so check these conditions whenever you encounter a problem.

This chapter covers the following:

- ▶ Printing high quality color images
- ▶ Solving problems

Printing High Quality Color Images

To obtain high quality color images, keep the following points in mind:

- ▶ Always use EPSON inks, paper, and other media designed for your EPSON ink jet printer.
- ▶ For the best results, use specially coated ink jet paper, which is designed to distribute the ink evenly, and is different from uncoated bond paper used in laser printers and copiers.

- ▶ Make sure you're using the correct PostScript driver for your printer (included on the EPSON Stylus RIP CD-ROM).
- ▶ If you're working with scanned images, check the scanner software settings.
- ▶ Try cleaning the print head with the utilities provided with your printer, then print a few lines to check your output. See your printer user's guide for instructions.
- ▶ Run the print head alignment utility using coated ink jet paper. See your printer user's guide for instructions. You may want to use a loupe to check the alignment.

Solving Problems

Here are some detailed solutions to specific problems or error messages you may receive.

You see a Printer cannot be opened or Printer not found error message (Macintosh)

Possible cause	Solution
The printer is not turned on.	Turn on the printer and try printing again.
The printer is not correctly connected to the Stylus RIP standalone or server Macintosh.	Make sure the printer connection is secure at both ends of the cable. Also make sure the cable is not defective and it meets the specifications for your printer. See your printer user's guide for more information.
You're using an optional EtherTalk interface card and named the printer incorrectly.	Check the instructions in Chapter 1 to make sure you named the printer correctly.

You see a memory or VM error message (Macintosh)

Possible cause	Solution
Virtual memory is not turned on.	Select Control Panels from the Apple menu, then select Memory Control Panel . Click the On button in the Virtual Memory panel.
Not enough memory is allocated to the Stylus RIP software.	Quit Stylus RIP and select the Stylus RIP icon on your desktop. Select Get Info from the File menu. Then increase the amount of available memory in the Preferred Size box to at least 20000K (minimum 16000K), making sure to leave some memory available for your system software and other applications.
Your system needs more memory.	If neither of the solutions above prevent memory error messages, you need to install additional memory on your Macintosh.

You see a communications error message when you try to open Stylus RIP

Possible cause	Solution
The printer is not turned on or not connected securely.	Make sure the printer connection is secure at both ends of the cable. Also make sure the cable is not defective and it meets the specifications for your printer. See your printer user's guide for more information. Turn on the printer and try printing again.
Your printer is connected to LPT2 or LPT3 (Windows).	Change the printer connection to LPT1. You cannot select any other output port within the EPSON Stylus RIP program.

Stylus RIP does not run (Windows)

Possible cause	Solution
You're using Norton Navigator or another special desktop.	Click the Windows icon, then click the Stylus RIP icon to run Stylus RIP directly from Windows.

Your saved files don't print (Windows)

Possible cause	Solution
You're not saving your PostScript print files with the .ps or .prn extension.	When you print from your application, make sure you save your PostScript print files with the .ps or .prn extension. Stylus RIP only processes files with one of these two extensions in their names. See page 4-14 for instructions.
You're not saving your PostScript print files in the right folder.	When you print from your application, make sure you save your PostScript print files in the C:\Windows\Temp folder. Stylus RIP will only process files in this folder, unless you configure EPSON Stylus RIP differently. See page 4-15 for instructions.

Stylus RIP takes a long time before printing starts

Possible cause	Solution
Your system needs more memory.	Add RAM to your computer. Complex jobs that use a large number of fonts will process faster with more RAM.
Your system needs a faster processor.	Upgrade your CPU, if possible, for faster processing of your print jobs.

Your printouts contain incorrect fonts or jagged type

Possible cause	Solution
You're not using PostScript fonts or your fonts are incorrectly installed.	Make sure you have PostScript compatible fonts (not just screen fonts) loaded on your system and selected in your application. Most fonts are downloaded with the print job. If the page is missing a font, EPSON Stylus RIP will default to Courier or print a bitmap image of the font.
The print head nozzles are clogged.	Run a self test on the printer and clean the print heads if necessary. See your printer user's guide for instructions.

The printer is producing pages containing illegible type or characters

Possible cause	Solution
The printer is not receiving and processing PostScript code.	<p>Click Cancel in the Information window on a Macintosh or Cancel Printing in the Stylus RIP window on a PC to stop printing. If this doesn't work, turn off the printer to avoid wasting paper.</p> <p>On a Macintosh, halt the Stylus RIP application by holding down the Option and Command keys and then pressing Esc. Restart your Macintosh to establish communication with the printer.</p> <p>Make sure that you correctly performed all the steps in Chapters 1 and 2 (Macintosh) or Chapters 3 and 4 (Windows).</p> <p>On a Windows system, make sure you are printing through the PostScript printer driver, and the port is set to Stylus RIP.</p> <p>On a Windows system, set the Parallel port type to either EPP or ECP mode. See your PC's owner's manual for instructions on changing this setting in your BIOS.</p>

Images and type look bitmapped and jagged on your printouts

Possible cause	Solution
You're printing with the standard EPSON non-PostScript driver rather than Stylus RIP.	Make sure you launch the Stylus RIP program before you start printing. On a Macintosh, make sure you select AdobePS in the Chooser. On a PC, make sure the correct Stylus RIP driver is selected in your application's Print Setup dialog box.

You see Font not found or Find font error messages (Macintosh)

Possible cause	Solution
You're allowing Font Substitution in your application.	Turn off Font Substitution in your application's Page Setup dialog box.
You're not using PostScript fonts.	You must have PostScript compatible fonts (not just screen fonts) loaded on your system and selected in your application to be able to print with the RIP.
You have moved or renamed the Stylus RIP software folder.	Follow the steps in Chapter 1 to reinstall the EPSON Stylus RIP software on your system. Then, don't move any of the installed files or folders.
Your Stylus RIP Preferences and tmp folders are corrupted.	If none of the solutions above prevent font error messages, delete the tmp folder and the CPSPREFS file in the Stylus RIP folder. Stylus RIP will create a new preference file automatically when you restart the program.
Your font management utility has a font conflict.	If you use a font management utility, check it to make sure all the fonts are available for your application as necessary.

One or more colors are missing in your printout or it prints in black ink only

Possible cause	Solution
You didn't specify color data in your application software or select color ink in your print options.	Check your application software documentation for instructions on creating a color document. Also make sure color ink is selected; see Chapters 2 and 4 for more information.
Your color print head needs cleaning or the ink cartridge is empty.	See your printer user's guide for instructions on cleaning the color print head or replacing an ink cartridge.

Your printed output has white lines

Possible cause	Solution
Your screen saver is interrupting the printing process.	Turn off your screen saver.
The print head nozzles are clogged.	Run a self test on the printer and clean the print heads if necessary. See your printer user's guide for instructions.

Bitmap images or clip art looks jagged

Possible cause	Solution
You are enlarging the images.	Try printing the images in a smaller size. These types of images are processed for a set resolution and size. EPS art files produce higher-quality images than bitmap art, especially when enlarged.

You're having trouble printing from PageMaker 6.0 or 6.5 (Windows)

Possible cause	Solution
Your PostScript printer PPD file is not in the correct folder or directory.	Copy your printer's PPD from the Windows\System folder to the following folder or directory: C:\PM6\RSRC\USEGLISH\PPD4.

EPS and TIFF files do not print

Possible cause	Solution
These files cannot be processed directly by Stylus RIP.	Place EPS or TIFF files on a page created in another application and then print.

Your printout has misplaced images or type

Possible cause	Solution
Your system doesn't have enough memory to run Stylus RIP.	Print from your application without starting Stylus RIP. Then close your applications before you run the EPSON Stylus RIP software. Add RAM to your computer.

Printed images are clipped at the edges

Possible cause	Solution
You selected the wrong paper size in Page Setup or Print Setup.	Make sure you select the paper size that corresponds to the paper in the printer.
You are printing a document with margins larger than the printable area of your printer.	Check your printer user's guide for information on the maximum printable area on your printer and format your document so it fits within that area. Also check that your printer software settings are correct for the document.
On a Macintosh, you selected the wrong printer name in the Chooser.	Follow the instructions under "Starting the EPSON Stylus RIP Server Software Automatically" on page 2-14 and make sure you select the correct printer icon, AppleTalk zone, and printer name. Then try printing again.

Your Macintosh freezes when you try to print from QuarkXPress

Possible cause	Solution
Quark balloon help caused a conflict.	Drag the QuarkXPress balloon help to the trash.

Your Macintosh loses custom page sizes when selecting PDF file output from QuarkXPress 3.3x

Possible cause	Solution
—	When selecting the PDF format, select Generic Color in order to select the custom page sizes that were originally created.

Index

A

AppleTalk, 1-4 to 1-5, 1-7,
2-2 to 2-4, 2-6

B

Batch printing, 4-10
Bitmap images, problems, 5-7

C

Cancelling print jobs
 Macintosh, 2-16 to 2-17
 Windows, 4-9
Chooser, 2-5 to 2-8
Client installation
 Macintosh, 1-1 to 1-2, 1-8 to 1-9
 Windows, 3-7 to 3-8
Clip art, problems, 5-7
Clipped images, 5-8
Color matching
 installing files, 1-9 to 1-11,
 3-9 to 3-10
 settings, 2-10 to 2-13, 4-7 to 4-8
Color problems, 5-6
ColorSync, 1-9 to 1-10
Communications error, 5-3
CompuServe, 6
Configuring Stylus RIP
 Macintosh, 2-2 to 2-8
 Windows, 4-15 to 4-16

D

Drag and drop printing, 2-15

E

EPS files, problems, 5-7
EPSON
 Accessories, 7
 Electronic support services, 6 to 7
 help, 6 to 7
 World Wide Web site, 6
Error messages, 5-2 to 5-6

F

FaxAdvice, 6
Fonts, problems, 5-4 to 5-6
FTP, 6

H

Help, 6 to 7

I

ICC profiles, 1-9 to 1-10, 3-9
ICM support, 3-9
Images, problems, 5-5 to 5-8
Ink setting
 Macintosh, 2-13
 Windows, 4-7

- Installing
 - on client Macintosh, 1-1 to 1-2, 1-8 to 1-9
 - on standalone or server
 - Macintosh, 1-1 to 1-2, 1-6 to 1-7
 - on Windows systems, 3-2 to 3-8

J

- Job Priority setting, 2-5

L

- License key, 2-3, 4-2

M

- Macintosh
 - configuring Stylus RIP, 2-2 to 2-8
 - drag and drop printing, 2-15
 - installing Stylus RIP, 1-1 to 1-2, 1-6 to 1-9
 - memory requirements, 2-2
 - network configuration, 1-3 to 1-5
 - printing from application, 2-8 to 2-10
 - setting options, 2-10 to 2-13
 - starting Stylus RIP automatically, 2-14
 - starting Stylus RIP manually, 2-2 to 2-4
 - system requirements, 3
- Managing print jobs
 - Macintosh, 2-16 to 2-17
 - Windows, 4-9 to 4-10
- Media(Quality) setting
 - Macintosh, 2-12
 - Windows, 4-7
- Memory errors, 5-3
- Missing colors, 5-6

- Monitor, Stylus RIP, 2-17

N

- Network configuration, Macintosh, 1-3 to 1-5
- Network Name setting, Macintosh, 2-4
- Network printing, Windows, 4-11 to 4-14
- Non-PostScript printing, 2

O

- Options, print
 - Macintosh, 2-10 to 2-13
 - Windows, 4-4 to 4-8

P

- PageMaker problems, 5-7
- PANTONE
 - Macintosh, 1-9 to 1-11
 - Windows, 3-9 to 3-10
- Paper options
 - Macintosh, 2-13
 - Windows, 4-7
- Peer-to peer network, 4, 3-7 to 3-8
- PostScript driver, installing, 3-4 to 3-8
- PostScript Printer Descriptions (PPDs), selecting, 2-6 to 2-8, 3-5
- PostScript printing, when to use, 1 to 2
- Preferences
 - Macintosh, 2-4 to 2-5
 - Windows, 4-15 to 4-16
- Press Simulation setting
 - Macintosh, 1-9, 2-10 to 2-13
 - Windows, 4-7 to 4-8

Print files
 folder, 4-15 to 4-16

Print head, maintenance, 5-2

Print jobs
 cancelling, 2-16 to 2-17, 4-9
 managing, 2-16 to 2-17,
 4-9 to 4-10
 setting options, 2-9 to 2-13,
 4-4 to 4-8

Print options
 Macintosh, 2-10 to 2-13
 Windows, 4-4 to 4-8

Print server, 1-4 to 1-7

Printer features setting, 4-7

Printer Profile setting, 2-11 to 2-12

Printer, checking, 1-2, 3-2

Printing
 batch, 4-10
 cancelling, 2-16 to 2-17, 4-9
 drag and drop, 2-15
 from Macintosh applications,
 2-8 to 2-10
 from Windows applications,
 4-1 to 4-3
 Macintosh options, 2-10 to 2-13
 multiple jobs, 4-10
 over Windows network,
 4-11 to 4-14
 problems, 5-4 to 5-7
 Windows options, 4-4 to 4-8

Q

Quark XPress problems, 5-8

R

Raster Spool Mode, setting
 Macintosh, 2-5, 2-17
 Windows, 4-15 to 4-16

Remote only connection, 1-5, 1-7

Resolution
 Macintosh, 2-12
 Windows, 4-5, 4-7

S

Serial connection, 2-2

Server software
 automatically starting, 2-14
 manually starting, 2-2 to 2-4
 setting up, 2-2 to 2-8

Service, 6 to 7

Solving problems, 5-1 to 5-8

SoundAdvice, 6

Standalone
 installing software, 1-6 to 1-9
 setting up, 2-2 to 2-8
 starting software, 2-2 to 2-4, 2-14

Standalone configuration
 definition, 1-3

Stylus RIP Monitor, 2-17

Stylus RIP, *see* Windows, Macintosh

Support, EPSON, 6 to 7

SWOP setting, 2-12 to 2-13, 4-7

System requirements, 3, 4

T

Temp Directory setting, 4-15 to 4-16

TIFF files, problems, 5-7

Timeout setting, 2-4

Troubleshooting, 5-1 to 5-7

U

USB connection, 1-3, 1-4

W

Windows

- color matching, 3-9 to 3-10
 - configuring Stylus RIP,
 - 4-15 to 4-16
 - installing Stylus RIP, 3-2 to 3-8
 - managing print jobs, 4-9 to 4-10
 - network printing, 4-11 to 4-14
 - printing from application,
 - 4-1 to 4-3
 - setting options, 4-4 to 4-8
 - starting Stylus RIP automatically,
 - 4-16
 - system requirements, 4
- World Wide Web, 6