



EPSON Stylus® Pro 9000 Series Print Engine

Display signage. In the right hands, with the right tools, and backed by an inspired imagination, it can communicate new ideas, demonstrate new concepts, and make a lasting impression. It's precisely the reason we created the wide-format EPSON Stylus Pro 9000 Series. With its remarkable speed and incredibly durable print engine, the EPSON Stylus Pro 9000 Series provides a set of tools that, whether you need to illustrate an interactive exhibit at a museum, guide prospects through the intricacies of a hot-off-the-drawing-board product at a trade show, or simply create a knock-their-socks-off atmosphere at your own studio, can help make an unforgettable impact. The EPSON Stylus Pro 9000 Series will not only create images that exceed your clients' expectations — it will keep them coming back for more. Whatever project you take on, shouldn't you be printing your graphics on the most powerful wide-format color printing system available?

Micro Piezo™ DX3™ print head for astounding image quality

- 1440 x 720 dpi for unsurpassed image quality, including text and line-art rivaling high resolution laser devices
- Photographic image quality created by an innovative 6-color inking system
- Proprietary hardware technology that ensures consistent printing over time from print-to-print and printer-to-printer



Individual High-Capacity Ink System

- Six 220 ml ink cartridges ensure complete overnight unattended operation
- Automatic ink level detection for all six ink cartridges facilitates accurate production estimates and ease of maintenance
- On-the-fly ink cartridge changing even during the middle of a print job with no loss in image quality

Breakthrough EPSON Archival™ Ink technology

- Available only with the EPSON Stylus Pro 9500
- Produces photographic prints that will last over 100 years on a wide range of media
- Color performance that rivals the EPSON Stylus Pro 9000
- Instant drying and water resistant ink; waterproof on some media
- Supports a wide range of media including glossy, semi-gloss, and matte photographic papers, backlight film, 1.5 mm cardboard, canvas, Tyvek™, vinyl and various watercolor papers

Flexible media support

- Holds up to two rolls of media simultaneously, for immediate changing of different media types
- Handles 13", 24", 36", 42" and 44" wide media in a variety of weights up to 1.5 mm thick
- Accepts manual cut sheet media up to 44" wide
- Handles Epson's complete line of professional media, as well as many third-party medias

True production quality print speeds^A

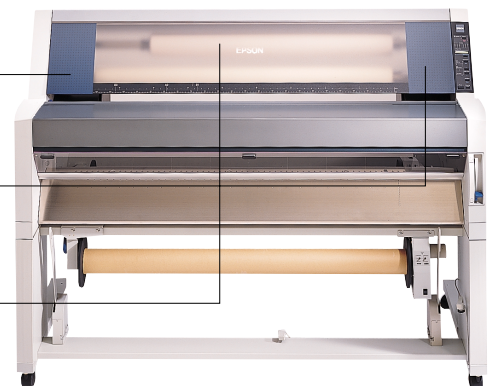
- Prints approximately 22 square feet-per-hour in truly photographic modes, with output that rivals that of more expensive, continuous flow ink jet printers
- Prints up to 66 square feet-per-hour in draft mode, with output that rivals the best quality printing of most thermal ink jet printers
- Prints better quality output at approximately 27 square-feet-per-hour than direct competitors can produce in any print mode

^A Based upon print engine speed only. Total throughput times depend upon front end RIP, file size, printer resolution, ink coverage, networking, etc.

6-color inking system



Dual media rolls





EPSON Professional Quality Media

Epson's professional line of media delivers optimum output from the EPSON Stylus Pro 9000 Series. Specially coated for superior image quality and durability, our media yields amazing results. Using the EPSON Stylus Pro 9000 and our standard dye-based inks, you can create prints that far exceed your expectations. When used with the EPSON Stylus Pro 9500 and our revolutionary EPSON Archival Ink, this outstanding media produces long-lasting photographic prints for exceptional outdoor or indoor signage.

In addition to Epson media, the EPSON Stylus Pro 9000 Series prints beautifully on a wide range of third-party products such as watercolor media and canvas. EPSON Archival Ink prints long-lasting images on glossy, semi-gloss, and matte photographic papers, backlight film, 1.2 mm cardboard, Tyvek and vinyl as well. At Epson, we strive to bring you the widest selection of media possible for all your 44" wide-format printing needs.

EPSON Stylus Pro 9000

Using standard dye-based ink from Epson.

Photo Glossy Paper

44" x 100' roll	SP91002
36" x 100' roll	SP91001

A durable high glossy paper on a 7 mil RC base. Use when the highest color saturation and output quality are needed. Prints great at either 720 or 1440 dpi. Can be laminated with a UV film to increase lightfast protection.

Semi-Gloss Paper

44" x 82' roll	S041228
36" x 82' roll	S041229

An 8 mil coated heavyweight paper with a semi-glossy surface for 720 and 1440 dpi printing. Can be used for high color images when a glossy surface is not needed. Can be laminated to increase UV protection.

Glossy Paper Heavyweight

44" x 65.5' roll	S041226
36" x 65.5' roll	S041227

An 8.5 mil coated heavyweight glossy paper. Can be printed up to 1440 dpi. Can be laminated to increase UV protection.

Presentation Matte Paper

44" x 82' roll	S041220
36" x 82' roll	S041221

A 170 g/m² coated paper for use in high-resolution printing at 720 and 1440 dpi. Great for comping and business presentations.

Backlight Film

44" x 100' roll	SP91008
36" x 100' roll	SP91007

A 5 mil reverse print instant drying backlight film suitable for displays. The reverse printing feature protects the display surface from moisture and dirt, eliminating the need for lamination. Capable of 360 and 720 dpi printing.

Posterboard — Semi-Gloss

28.7" x 45.5" (5 sheets/box)	S041236
20.25" x 28.7" (10 sheets/box)	S041237

A 1.2 mm thick coated board allows for high resolution printing without mounting. Great for display and courtroom graphics.

Photo Semi-Gloss Paper^B

44" x 100' roll	SP91004
36" x 100' roll	SP91003
24" x 100' roll	SP91022

DuPont & EPSON Commercial Matte Paper^C

36" x 50' roll	H59537
----------------	--------

A 217.8 g/m² professional paper designed to simulate the commercial printing press environment. Ideal for large format pre-film proofing and content proofing.

^B Available August 2000

^C Please visit www.dupont.com for availability

EPSON Stylus Pro 9500

Using EPSON Archival Ink.

(Available only with the EPSON Stylus Pro 9500.)

Doubleweight Matte Paper^o

44" x 82' roll

36" x 82' roll

24" x 82' roll

A 180 g (48 lb.) Flat Matte paper for everyday printing. Easily laminated for increased durability.

Semi-Gloss Paper^o

44" x 65' roll

22" x 65' roll

A 215 g semi-gloss paper ideal for proofing and indoor signage. Its high color gamut yield prints more saturated than from a dye inkset.

Semi-Matte Paper^o

44" x 82' roll

36" x 82' roll

24" x 82' roll

A 215 g semi-matte surface ideal for proofing and indoor signage. Its low glare surface allows for easy viewing.

Premium Glossy Photo Paper^o

44" x 82' roll

36" x 82' roll

24" x 82' roll

A 10 mil photographic stock with a high gloss "F" surface on an RC base.

Premium Semi-Gloss Photo Paper^o

44" x 82' roll

36" x 82' roll

24" x 82' roll

A 10 mil photographic stock with a semi-gloss "M" surface on an RC base.

Premium Luster Photo Paper^o

44" x 82' roll

36" x 82' roll

24" x 82' roll

A 10 mil photographic stock with a Luster "E" surface on an RC base. Ideal for portraits.

Posterboard for Archival Ink^o

22" x 28" (sheets)

A 1.2 mm thick board specially coated so no mounting is required. Great for posters and graphic presentations.

EPSON Watercolor – Smooth^o

36" x 44" (sheets)

24" x 30" (sheets)

Acid free, 100% cotton paper. The smooth textured surface is a favorite of photographers.

EPSON Watercolor – Textured^o

44" x 30" (sheets)

36" x 44" (sheets)

Acid free, 100% cotton paper. The textured surface is a favorite of fine artists looking for a cold press look.

Backlit Film for Archival Ink^o

44" x 65' roll

36" x 65' roll

24" x 65' roll

A 5 mil reverse print backlight film that can be displayed outdoors.

Canvas^o

44" x 65' roll

36" x 65' roll

24" x 65' roll

A 20 pound 100% cotton canvas with a matte surface. This white canvas will be a favorite for photographers.

Translight^o

44" x 65' roll

36" x 65' roll

24" x 65' roll

Tyvek^o

44" x 65' roll

36" x 65' roll

24" x 65' roll

A durable Tyvek for banners and signage.

Scrimm Vinyl^o

44" x 65' roll

36" x 65' roll

24" x 65' roll

Adhesive Vinyl^o

44" x 65' roll

36" x 65' roll

24" x 65' roll

Block Vinyl^o

44" x 65' roll

36" x 65' roll

24" x 65' roll

Synthetic Paper^o

Adhesive Synthetic Paper^o

^o EPSON Stylus Pro 9500 media coming Fall 2000

EPSON Stylus Pro 9000 Series Print Engine Specifications

Printing Method

Micro Piezo DX3 drop-on-demand ink jet
6-color ink system including Cyan, Magenta, Yellow, Light Cyan, Light Magenta, and Black

Nozzle Configuration

Monochrome head: 64 nozzles (K)
Color head: 64 nozzles x 5 (CcMmY)

Resolution

1440 x 720 dpi; 720 x 720 dpi; 720 x 360 dpi; 360 x 360 dpi

Print Engine Speed[†]

Resolution	sq. ft/hr	Quality Level
360 x 360 dpi	66	Rivals competitors best
720 x 360 dpi	44	Better than competitors best
720 x 720 dpi	22	Astonishing photographic quality
1440 x 720 dpi	12	Rivals chemistry based photography

Acoustic Noise Level

Approximately 50 dB(A) according to ISO 7779

Printer Language

True Adobe® PostScript® 3 with optional EPSON RS-5100 Fiery X2 RIP

Macintosh® OS 7.6.1 or later QuickDraw® Drivers standard
Windows® 95/98/2000/NT 4.0 Raster Drivers standard

Printer Interfaces

Standard Serial, Parallel (IEEE-1284 ECP Mode), and Epson Expansion Slot
Optional 10/100 BaseT or FireWire® (IEEE-1394) expansion cards

Optional EPSON RS-5100 Fiery X2 RIP connects to print engine through Parallel Port. See RS-5100 Specification Sheet for connectivity options.

Dimensions

66.46" (W) x 27.52" (D) x 49.57" (H)

Printer weight: 211.64 lb with legs

Printable Area

Maximum paper width: 44.02"

Left and right print margins: 3 mm each (0.24" total)
Maximum printable width: 43.76"
Maximum printable length: Up to 100'
(limited by software application)

Media Handling

Media input: Dual rolls up to 44" width
Handles 24", 36", and 44" roll media
Cut sheet size: Up to 44" wide media
Max. media diameter: Up to 4"
Media core compatibility: Handles both 2" and 3" cored media
Weight: 12 lb bond up to 1.5 mm cardboard
Media cutter: Built-in, automatic or manual cutting

Ink Cartridge

Ink cartridge yield: 220 ml each color x 6 colors total
Ink cartridge shelf life: 2 years from printed production date

EPSON Ink Technology

EPSON Stylus Pro 9000 Standard Ink (dye based)
EPSON Stylus Pro 9500 EPSON Archival Ink (pigment based)

Environmental Characteristics

Temperature operating: 50° to 95° F (10° to 35° C)
Storage: 4° to 140° F (-20° to 40° C)
Humidity operating: 20 to 80% relative humidity
Storage: 5 to 85% relative humidity
(no condensation)

Safety Approval

Safety standards: UL1950 with D3, CSA 22.2 950 with D3
EMI: FCC Part 15 subpart B class B,
CSA C108.8 class B

Engine Reliability

Total print volume: 18,000 B1 images at 30% coverage
Print head life: 2 billion dots/nozzle
Cutter life: 2000 times (A1)
Maintenance parts: Ink pad, pump unit, flushing box, head cleaner, cap assembly

Electrical Requirements

Voltage: 120 V
Frequency: 50 to 60 Hz
Current: 1.0A
Power consumption: Approx. 100W (operating)
30W (Standby) Energy Star compliant

Product/Accessories Part Numbers

EPSON Stylus Pro 9000 Fiery X2 Printing System	C277011S
EPSON Stylus Pro 9000 Print Engine only	C277011B
EPSON Stylus Pro 9500 Fiery X2 Printing System	C381011S
EPSON Stylus Pro 9500 Print Engine only	C381011B
EPSON RS-5100 Fiery X2 RIP	C850092
EPSON Color Calibrator System	C850081
Internal IEEE-1394 FireWire Type-B Card	C823722
Internal 10/100 BaseT Type-B Card	C823632
Automatic Take-up Reel System	C815082
Replacement 44" Take-Up Reel Core	C815121
Paper Roller Spindle—2"	C811041
Paper Roller Spindle—3"	C811051
Replacement Media Cutter Blade	C815131

EPSON Ink Technology (Standard/Archival)

	SP 9000	SP 9500
Cyan ink cartridge	T410011	T477011
Light Cyan ink cartridge	T412011	T479011
Magenta ink cartridge	T409011	T476011
Light Magenta ink cartridge	T411011	T478011
Yellow ink cartridge	T408011	T475011
Black ink cartridge	T407011	T474011

[†] Based upon print engine speed only. Total throughput times depend upon front end RIP file size, printer resolution, ink coverage, networking, etc.

YOU'VE GOT TO SEE IT IN  COLOR.™

Epson America, Inc.: 3840 Kilroy Airport Way, Long Beach, CA 90806

Epson Canada, Ltd.: 550 McNicoll, Willowdale, Ontario M2H 2E1

Epson Latin America: 6303 Blue Lagoon Drive, Miami, FL 33126

Internet Website: www.prographics.epson.com.

Specifications and terms are subject to change without notice. EPSON Archival Ink technology is only compatible with EPSON Stylus Pro 7500 or EPSON Stylus Pro 9500. EPSON and EPSON Stylus are registered trademarks of Seiko Epson Corporation. EPSON Archival, Micro Piezo and DX3 are trademarks of Epson America, Inc. All other product brand names are trademarks and/or registered trademarks of their respective companies. EPSON disclaims any and all rights in these trademarks. As an ENERGY STAR Partner, Epson America Inc. has determined that this product meets the ENERGY STAR guidelines for energy efficiency. © Epson America, Inc. 2000. CPD-10126 32.5K 5/00 GAC

Printed on Recycled Paper 

Electronics
FOR Imaging™


Adobe® PostScript® 3™


fiery


DUPONT


ENERGY STAR
EPA POLLUTION PREVENTER

Fiery X2 RS-5100 RIP



Win the business. Get the contract. Make the sale. It all comes down to your presentations. With so much riding on the outcome, we respectfully suggest you consider printing your, or your client's, next presentation on the EPSON Stylus Pro 9000. With its ability to print photographic quality images on virtually any media and on a wide variety of sizes, it can easily transform even the most boring statistics into a sit-up-and-take-notice presentation. Whether you're presenting a series of sales projection charts to a tough-minded investment group or an environmental impact study to a concerned group of citizens, the output from the EPSON Stylus Pro 9000 can ensure your presentations transcend the merely great and enter the realm of the truly outstanding. The bottom line? Take advantage of the EPSON Stylus Pro 9000 and your presentations won't just present—they'll persuade.

Main Feature Set

High-Performance External EFI Fiery X2 Server

- True Adobe® PostScript® 3™ offers advanced page and text handling features.
- Exclusive EPSON AcuPhoto Halftoning™ technologies for astonishing photographic quality output.
- RIP-While-Print® technology allows the controller to simultaneously process and print pages.
- The ability to spool, RIP and print simultaneously from both Macintosh® and Windows® platforms allows for seamless integration into any workflow, resulting in greater productivity.



New Curve Editor

Total control on all ICC and CRD color profiles

- Fiery Spooler™, Fiery ColorWise® ProTools and Fiery Downloader™ utilities provide control over all aspects of printing from remote workstations.
- Comprehensive job accounting automatically keeps track of job details, essential for accurate client accounting. The job log can be exported for integration into a cost accounting system.
- Total Web support includes a built-in HTML Web page. Fiery WebTools™ provide enhanced job management capabilities via a company intranet or internet. Remote users can download and install printer drivers on their workstations, retrieve printer status information and change job parameters.

Professional-Level Color Management System

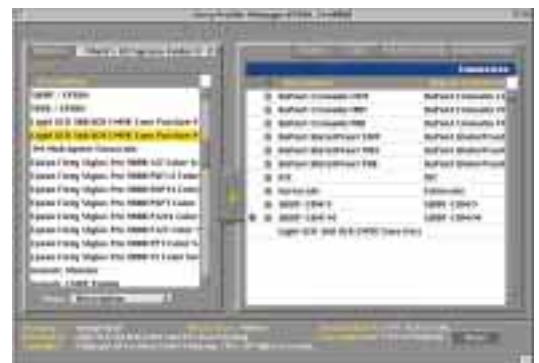
- Fully adjustable CMYK color correction, including dot gain adjustments for precise hardware color control.
- Color Rendering Dictionaries (CRDs) optimize color for photographs, presentations and solid colors. Each CRD is fine-tuned for specific media types and resolution.
- Offers standard high-quality press simulation CRDs for color critical applications. Profiles are tuned for DuPont WaterProof®, Imation® Matchprint III®, Cromalin®-Euroscale, Fuji Color-Art, SWOP and DIC standards.
- Fully compatible with Epson's optional Color Calibrator colorimeter for complete print engine calibration.
- Fully compatible with ICC and Apple ColorSync profiles.

Convenient LCD Display with Activity Lights

- Easy to read LCD provides RIP and print status plus configuration information from the control panel.

Superior Connectivity Support

- Standard 10/100 BaseT and 10 Base5 AUI connections support EtherTalk, TCP/IP and NOVELL® IPX protocols.
- Standard support for Macintosh, Windows 98, Windows 95, Windows NT 4.0 and UNIX® assures every network user is compatible.



New Profile Manager

Allows for complete CRD and ICC profile management

Fiery X2 5100 RIP Detailed Specifications

Hardware Specifications

EFI Fiery X2 Processor

MIPS R5000 CPU @ 200 MHz

Fiery RipChips control memory, network, and printer communications

Standard Memory

128MB high speed memory

Spooler Hard Drive Support

4.2 Gigabyte EIDE 3.5" hard disk drive

LCD Display

Fiery X2 control panel for status and control

Optional Interfaces

Single PCI option slot for future upgrades

Page Description Language Specifications

Page Description Language

Adobe PostScript 3 – fully PDF workflow ready

Exclusive EPSON AcuPhoto™ Halftoning technologies for astonishing photographic quality output

Standard Fonts

136 Adobe Type 1 Roman PostScript scalable fonts

Rip-While-Print

Processes and prints files simultaneously while driving EPSON Stylus Pro 9000 at its maximum rated print engine speed

Continuous Print

Prints to the EPSON Stylus Pro 9000 with no print engine down time

Fiery Utilities

Fiery ColorWise ProTools for complete ICC and CRD profile management

Fiery Spooler for print spooling and job management, as well as production tracking and billing

Fiery Downloader for downloading PostScript files and fonts

Fiery WebTools Supported

Installer, WebLink, WebSpooler, and Web Status and Print Monitor
Fully compatible with any Java-enabled web browser

Networking Specifications

Network Protocols

EtherTalk Phase 2, TCP/IP, and NOVELL IPX 802.2 and 802.3 frame types

Simultaneous AutoSwitching among protocols

Network Connections

10/100BaseT support included on board, no additional card needed

AUI (10 Base5, 10 Base2 with external transceiver – not included)

RJ45 (Ethernet)

BNC w/transceiver (not included)

SCSI II

Parallel Out – IEEE 1284 Type C

Parallel In – IEEE 1284 Type A

Serial Port – DB9 (RS-232C)

