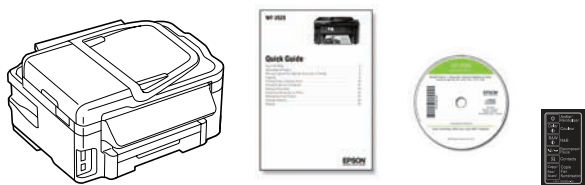


WF-3520 Start Here

Read these instructions before using your product.

Note for Spanish speakers/Nota para hispanohablantes: Para obtener instrucciones de configuración en español, consulte la *Guía de instalación* en www.epson.com/support/wf3520sp (requiere una conexión a Internet).

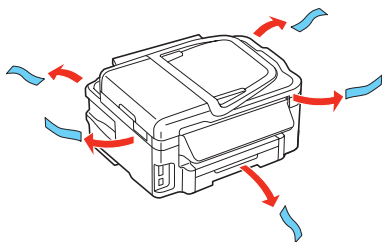
1 Unpack



French control panel stickers (included for Canada only)

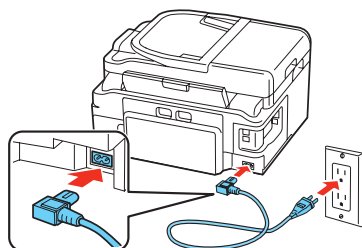
Caution: Do not open ink cartridge packages until you are ready to install the ink. Cartridges are vacuum packed to maintain reliability.

Remove all protective materials.



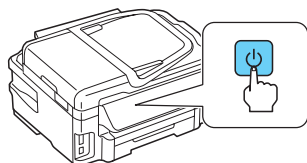
2 Turn on

1 Connect the power cord to the back of the printer and to an electrical outlet.



Caution: Do not connect to your computer yet.

2 Press the power button.



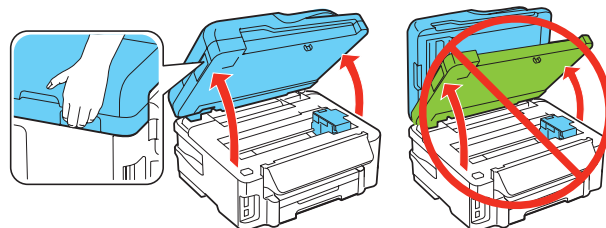
3 Select settings

- 1 To select English as your language, press **OK**. If you want to change the language, press **▲** or **▼** to select it, then press **OK**.
- 2 Select your country/region and press **OK**.
- 3 Select **Summer** if Daylight Saving Time is in effect; otherwise, select **Winter**. Press **OK**.
- 4 Select the date format and press **OK**.
- 5 Press the number keys to enter the date and press **OK**.
- 6 Select **12h (AM/PM)** or **24h** and press **OK**.
- 7 Press the number keys to enter the time. Then select **AM** or **PM**.
- 8 Press **OK**.

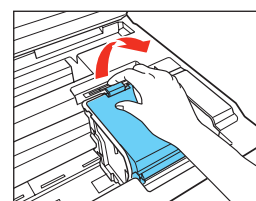
Note: You can change the time and date settings using the product's control panel. For more information, see the online *User's Guide*.

4 Install ink cartridges

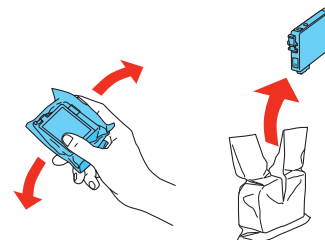
1 Lift the scanner unit.



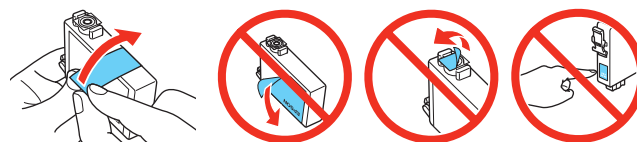
2 Open the cartridge cover.



3 Shake the ink cartridges gently 4 or 5 times, then unpack them.



4 Remove only the yellow tape from each cartridge.



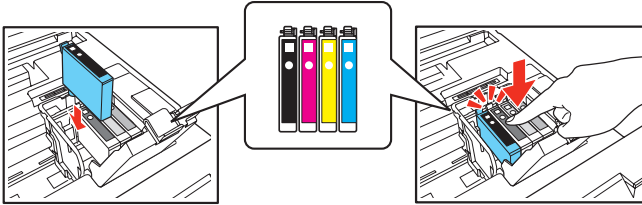
Caution: Don't remove any other seals or the cartridges may leak.



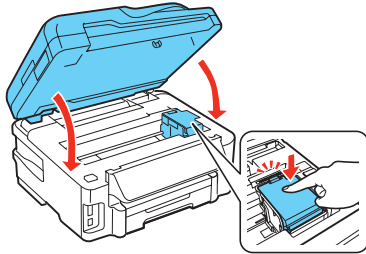
412331000

EPSON
EXCEED YOUR VISION

- 5** Insert the cartridges in the holder for each color. Press each cartridge down until it clicks.



- 6** Close the cartridge cover. Press down until it clicks. Then lower the scanner unit.



- 7** Ink priming begins. This takes about 6 minutes.

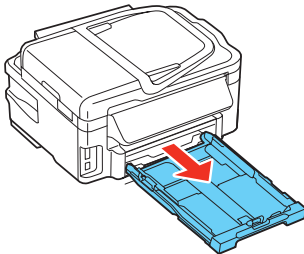
Note: Your printer ships with full cartridges and part of the ink from the first cartridges is used for priming the printer.

Caution: Don't turn off the printer while it is priming or you'll waste ink.

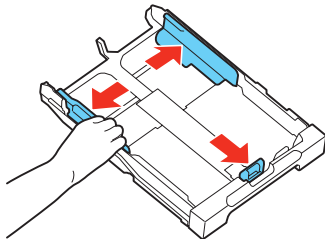
5 Load paper

For instructions on loading envelopes, photo paper, or legal-size paper, or using the rear feed slot, see the online *User's Guide*.

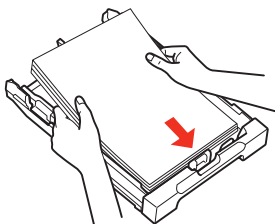
- 1** Pull out the paper cassette.



- 2** Squeeze and slide out the edge guides.

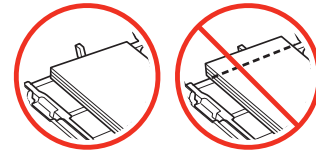


- 3** Insert the paper with the glossy or printable side facedown.

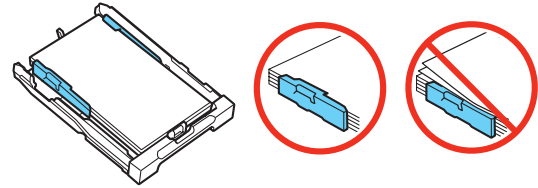


Note: Make sure the paper is loaded against the edge guide

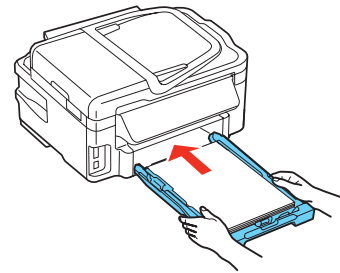
and not sticking out from the end of the cassette.



- 4** Slide the edge guides against the paper, but not too tight. Make sure the paper is under the tabs on the edge guides.

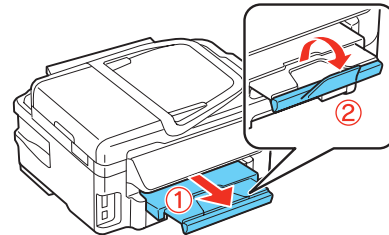


- 5** Gently insert the paper cassette.



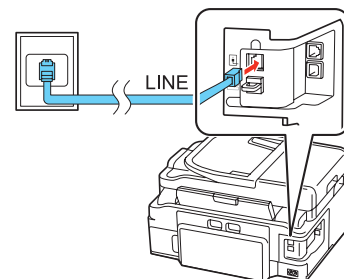
Note: The paper may slide forward slightly as you insert the cassette. This is normal.

- 6** Extend the output tray and raise the stopper as shown.



6 Connect the fax line

To fax, connect the phone cord to a telephone wall jack and to the **LINE** port on your product. To connect a telephone or answering machine, use the **EXT.** port on your product. See the *Quick Guide* for more details.



Note: If you're connecting to a DSL phone line, you must use a DSL filter or you won't be able to fax. Contact your DSL provider for the necessary filter.

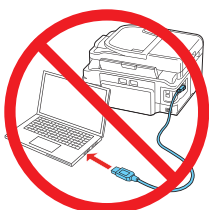


7 Install software

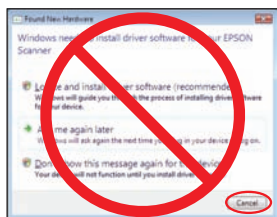
Note: If your computer does not have a CD/DVD drive, you can download the software from the Epson website (see “Epson technical support”).

Caution: Be sure to close your other programs, including any screen savers and virus protection programs, before beginning this software installation.

- 1 Make sure the printer is **NOT CONNECTED** to your computer.



Windows®: If you see a Found New Hardware screen, click **Cancel** and disconnect the USB cable. You can't install your software that way.

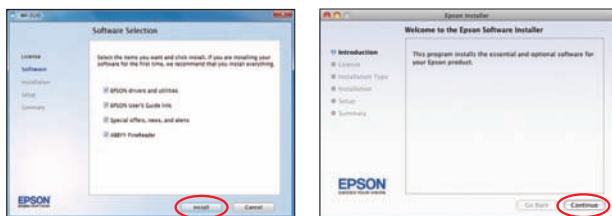


- 2 Insert your product CD.

- 3 **Windows:** If you see the AutoPlay window, click **Run Setup.exe**. If you see the User Account Control screen, click **Yes** or **Continue**.

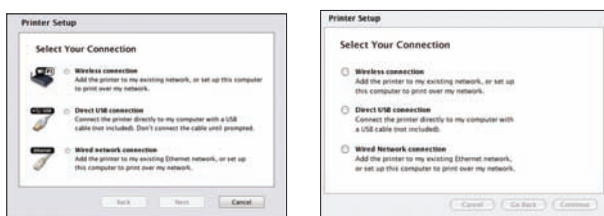
Mac OS X: Double-click the  **Epson** icon.

- 4 Click **Install** (Windows) or **Continue** (Mac OS X) and follow the instructions on your computer screen.



- 5 When you see the Select Your Connection screen, check the “Connection options” section on this sheet for more information.

Choose your connection. Then click **Next** (Windows) or **Continue** (Mac OS X) and follow the instructions on your computer screen.



Connection options

Wireless connection

You must install the software on every computer from which you want to print. For the first installation, we recommend using a USB cable (not included) to simplify wireless setup. After the printer is connected to the network, you will be prompted to remove the cable.

If you're using Mac OS X 10.6, 10.7, or 10.8, or you don't have a USB cable, you will need to use the control panel on the printer to select wireless settings. Follow the instructions on your computer screen during software installation; they will explain how to connect the printer wirelessly this way.

Make sure you know your network name (SSID) and network password:

- Network name _____
- Network password _____

If you don't have this information, contact the person who set up your network.

To view how-to videos on setting up your printer's wireless connection, go to epson.com/support (U.S.) or epson.ca/support (Canada).

Direct USB connection

Make sure you have a USB cable (not included).

Wired network connection

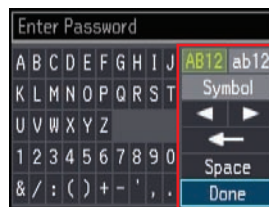
Make sure you have an Ethernet® network cable (not included). You must install the software on every computer from which you want to print.

Any problems?

If you experience problems during setup, see below:

Network setup was unsuccessful.

- Make sure you select the right network name (SSID).
- If you see a firewall alert message, click **Unblock** or **Allow** to let setup continue.
- If your network has security enabled, make sure you enter your network password (WEP key or WPA passphrase) correctly. Passwords must be entered in the correct case. Use the function buttons to select uppercase (**AB12**), lowercase (**ab12**), symbols, or spaces, and to delete characters.



Function buttons

Press ▲ ▼ ◀ ▶ on the printer to highlight a letter or function button.

Press **OK** to select it.

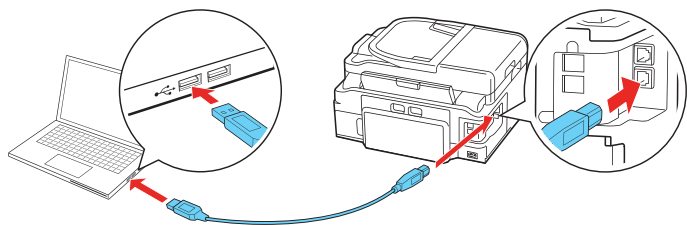
Highlight **Done** and press **OK**.

The printer's screen is dark.

Press a button to wake the printer from sleep mode.

Setup is unable to find my printer after connecting it with a USB cable.

Make sure it is securely connected as shown:




Any questions?

Quick Guide

Basic instructions for printing, copying, scanning, and faxing.



User's Guide

Click the  icon on your desktop (or in the **Applications/Epson Software/Guide** folder in Mac OS X) to access the online *User's Guide*, how-to-videos, software downloads, EPSON® Supplies Central®, and more (requires an Internet connection).



If you don't have a User's Guide icon, you can install it from the CD or go to the Epson website, as described below.

On-screen help with your software

Select **Help** or **?** when you're using your software.

Epson technical support

Visit epson.com/support (U.S.) or epson.ca/support (Canada) where you can download drivers, view manuals, get FAQs, or e-mail Epson.

You may also speak with a support specialist by calling (562) 276-4382 (U.S.) or (905) 709-3839 (Canada), 6 AM to 8 PM, Pacific Time, Monday through Friday, and 7 AM to 4 PM, Pacific Time, Saturday.

Days and hours of support are subject to change without notice. Toll or long distance charges may apply.

Software technical support

ABBYY® FineReader®
(408) 457-9777
www.abbyy.com
support@abbyyusa.com

Recycling

Epson offers a recycling program for end of life hardware and ink cartridges. Please go to www.epson.com/recycle for information on how to return your products for proper disposal.

Need paper and ink?

Try EPSON specialty paper with DURABrite® Ultra Ink for professional results. For the right supplies at the right time, you can purchase them at EPSON Supplies Central at www.epson.com/ink3 (U.S. sales) or www.epson.ca (Canadian sales). You can also purchase supplies from an EPSON authorized reseller. To find the nearest one, call 800-GO-EPSON (800-463-7766).

DESIGNED *for* EXCELLENCE™

EPSON printers, ink and specialty papers.

Genuine EPSON paper

Epson offers a wide variety of papers to meet your needs; visit EPSON Supplies Central for more information.



Presentation Paper Matte

Smooth, non-glare, instant-drying paper ideal for reports, newsletters, and graphical presentations.





Genuine EPSON inks



Look for the numbers below to find your cartridges. It's as easy as remembering your number!



WF-3520 ink cartridges

Color	High-capacity	Extra High-capacity
 Black	126	127
 Cyan	126	127
 Magenta	126	127
 Yellow	126	127

EPSON Connect™ Solutions, AirPrint, and Google Cloud Print™



Print and scan from anywhere. Use your smartphone or tablet to print photos or documents while on the go. Learn more at www.epson.com/connect.



EPSON, Supplies Central, and DURABrite are registered trademarks, EPSON Connect is a trademark, and EPSON Exceed Your Vision is a registered logomark of Seiko Epson Corporation. Designed for Excellence is a trademark of Epson America, Inc.

AirPrint is a trademark of Apple Inc.

General Notice: Other product names used herein are for identification purposes only and may be trademarks of their respective owners. Epson disclaims any and all rights in those marks.

This information is subject to change without notice.

© 2012 Epson America, Inc. 5/12

CPD-37223

Printed in XXXXXX