

Setup

Notes

Notes contain important information and useful tips on the operation of your product.

Package Contents

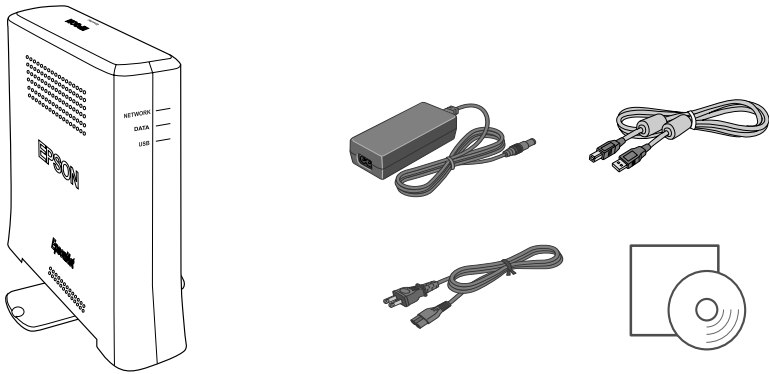
Your network interface package includes the following items:

- Wireless network interface
- AC adapter (A261H) and power cord
- USB cable
- Software CD-ROM

You need to prepare the following items:

- Epson device (such as printer or all-in-one) with USB port. (See the Reference Guide for information on the supported devices.)
- Access point (required for Infrastructure mode only)
- Computer with USB port

- Note:**
- To get to the access point via a wireless network, you need to install an 802.11b/g WLAN compliant network interface card on your computer.
 - The term “network interface” refers to the EpsonNet 802.11g Wireless Ext. Print Server in this guide.
 - The network interface supports the following operating systems: Windows XP/Me/98 SE/2003/2000 and Mac OS X 10.2 or later/9.1 or later.
 - See the manual shipped with your printer or all-in-one for the supported operating system of your printer or all-in-one.

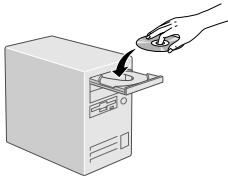


For Windows

If you are going to use the network interface with all-in-one, see the back side of this sheet.

Otherwise, follow the steps below to install the *Reference Guide* on your computer to see the setup instructions.

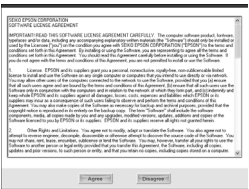
- Insert the Software CD-ROM in the CD-ROM drive.



- From the Welcome screen, click **Next**.



- Read the license agreement, and then click **Agree**.




- Select **Install Network Utility**.



- Click the **Install** button located next to **Reference Guide**.

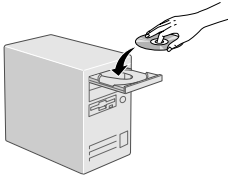


- To view the *Reference Guide*, double-click the  **EpsonNet Reference Guide** icon on the desktop. See “How To” in the *Reference Guide* for detailed information. You can also access the *Reference Guide* via the Start menu. To do so, click **Start**, point to **All Programs** (Windows XP/Server 2003) or **Programs** (Windows Me/98/2000), and then select **EPSON**. Click **EpsonNet Reference Guide**.

For Macintosh

Follow the steps below to install the *Reference Guide* on your computer to see the setup instructions.

- Insert the Software CD-ROM in the CD-ROM drive.



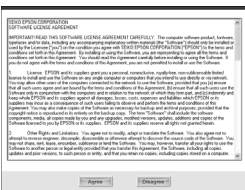
- Double-click the **EPSON** CD-ROM icon.
- Double-click the appropriate OS icon in the **EPSON** folder.



- From the Welcome screen, click **Next**.



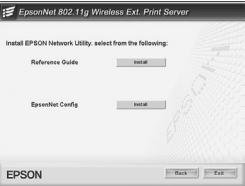
- Read the license agreement, and then click **Agree**.




- Select **Install Network Utility**.



- Click the **Install** button located next to **Reference Guide**.



- To view the *Reference Guide*, double-click the  **EpsonNet Reference Guide** icon on the desktop. See “How To” in the *Reference Guide* for detailed information.



405266700

Continue to the next page... ➡

For EPSON STYLUS PHOTO RX500/600 and EPSON STYLUS CX4600/6400/6600 Users (Windows Users Only)

Follow the steps below to set up the all-in-one for use on a wireless network.
Make sure the all-in-one is set up and the software for the all-in-one is installed on your computer before taking the steps below.
See the manual shipped with the all-in-one for detailed instructions.

Note:

- ❑ If EpsonNet WinAssist is installed on your computer, uninstall it before following the steps below.
- ❑ It is a good idea to write down the SSID and WEP Key or WPA Personal password before taking the steps below.
- ❑ Windows Server 2003 is not supported.

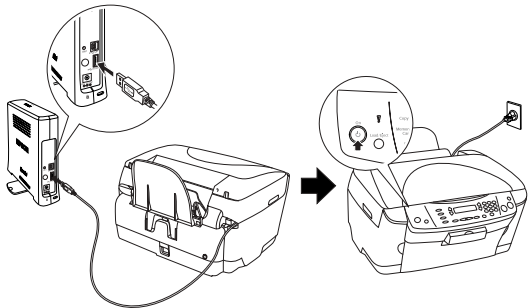
1. Insert the Software CD-ROM in the CD-ROM drive.
2. From the Welcome screen, click **Next**.
3. Read the license agreement, and then click **Agree**.
4. Select **Connect the Wireless Print Server**.



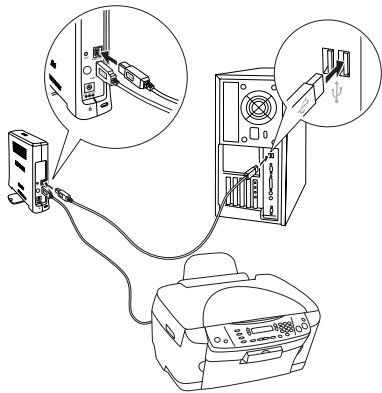
5. Connect the network interface and the all-in-one with a USB cable. Finally, turn on the all-in-one.

Note:

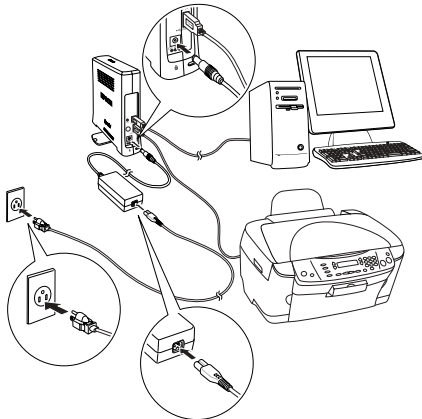
Be sure to use the USB cable that comes with the network interface. If the all-in-one has a built-in USB cable, use it to connect to the network interface.



6. Connect the square connector on the USB cable to the USB upstream connector on the network interface, and then connect the other end to the USB port on the computer.



7. Connect the power cord to the AC adapter, and then plug the AC adapter into the network interface's DC-IN connector. Finally, plug the power cord into a properly grounded wall outlet.



8. The "Found New Hardware Wizard" appears to prompt you to install the USB driver. Select the **Install from a list or specific location** radio button and then click **Next**.

Note for Windows XP Service Pack 2 Users:

If the following screen appears, select the **No, not this time** radio button, and then click **Next**.

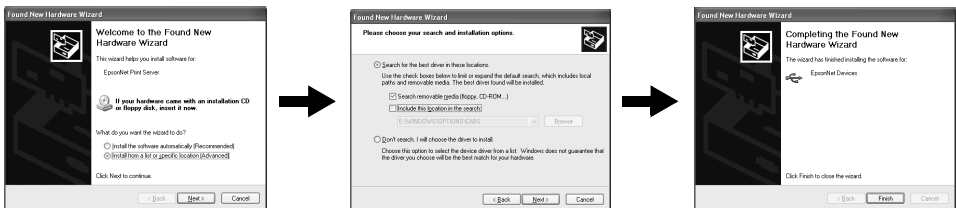


Select the **Search for the best driver in these locations** radio button and then select the **Search removable media** check box. Finally, click **Next**.

When the operation is completed, click **Finish**.

Note:

These screens may be different depending on the operating system.



9. Click **Next**.



10. Select the model of the all-in-one.



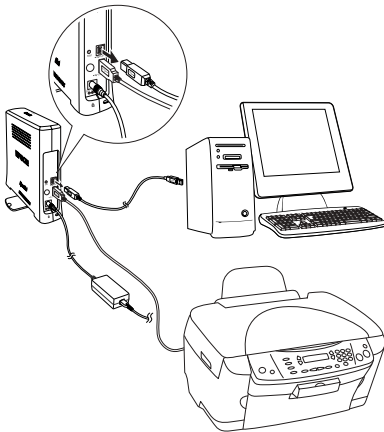
11. Click **Install**. Follow the on-screen instructions to make the wireless settings and TCP/IP settings and install the drivers.

Note for Windows XP Service Pack 2 users:

If the following screens appear, click the **Unblock** button.



12. Pull out the USB cable from your computer and the network interface.



13. Now you can use the all-in-one on the wireless network.