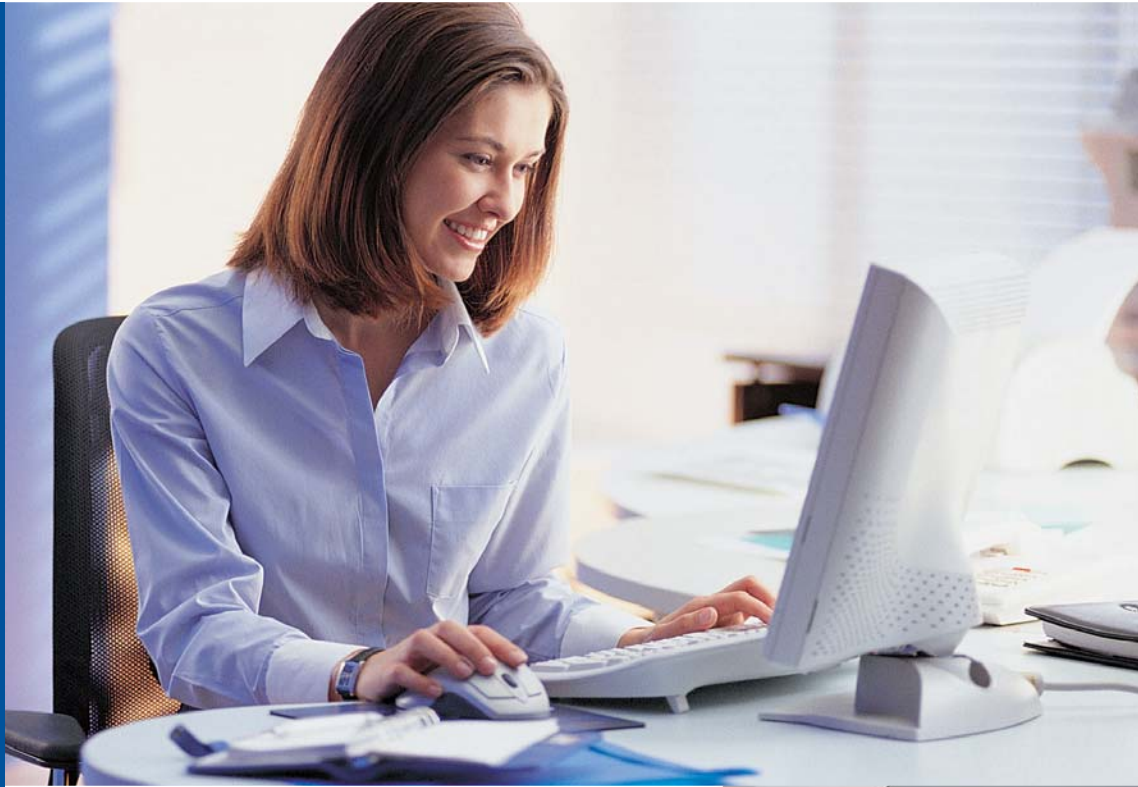


COLOUR
IMAGE
SCANNER

EPSON PERFECTION™ 3170 PHOTO



- **High resolution** – 3200dpi scanning
- **High speed** – USB 2.0 Hi-speed interface and on-board ASIC processor
- **Advanced film scanning** – Integrated Transparency Unit for 35mm slides and films
- **Total software solution** – bundled with photo editing, OCR and EPSON Smart Panel software
- **Photo Restoration** – substantially revive your faded photos
- **Automatic Document Feeder** – optional extra

EPSON®

High performance photo, film and document scanning have reached new levels with the EPSON PERFECTION 3170 PHOTO. Through a unique combination of EPSON's advanced technologies and applications, this scanner delivers amazing results – with incredible ease.



High Image Quality and High Resolution

Professional users demand high image quality and high resolution. The PERFECTION 3170 PHOTO combines advanced technologies to consistently deliver stunning results. It features an advanced 3200dpi main scanning ability, which is achieved by utilising a MatrixCCD (Charge Coupled Device) and a new Micro Lens. The use and precise positioning of these devices combine to deliver superb light sensitivity that is critical in high performance scanning, without the need for a large carriage. Also included is a dedicated ASIC (Application Specific Integrated Circuit) for on-board image processing. Adding further to the groundbreaking scanning performance of the PERFECTION 3170 PHOTO is that the optical carriage is driven at 6400dpi, using EPSON's Micro Step Drive (sub-scanning) technology.



Automatic Document Feeder (Optional Extra)

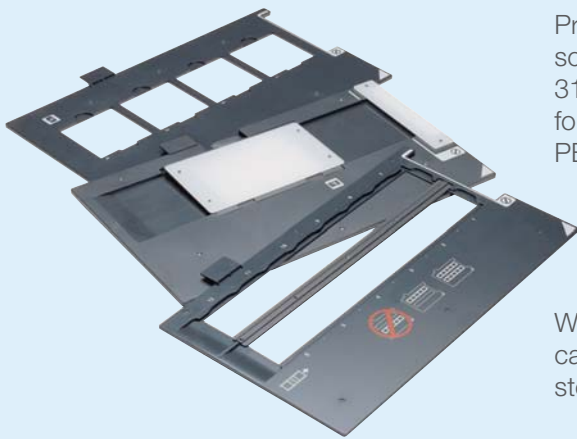
A high performance option to the PERFECTION 3170 PHOTO is its Automatic Document Feeder (ADF), which supports automatic document scanning of documents up to legal size. With an added capacity of up to 30 sheets and document scanning speed of 4.5ppm, the PERFECTION 3170 PHOTO represents an entirely new level of desktop scanning professionalism.

Professional Film Scanning

Professional photographers, archivists and anyone requiring high performance film scanning can rely on the professional film scanning capabilities of the PERFECTION 3170 PHOTO. Its integrated Transparency Unit (TPU), features new powerful lamps for faster scanning speeds. To make film and negative scanning even easier, the PERFECTION 3170 PHOTO includes three film holders, which support:

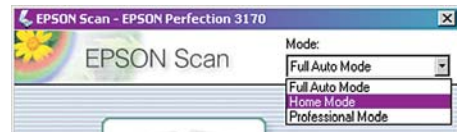
- 35mm strip film x 12 frames
- 35mm x 4 slides mounted film
- Medium format (120/220) (up to 6 x 9cm) x 1 frame strip film

When used in conjunction with the EPSON Scan Software/Driver, each film frame can automatically be saved as a separate image file. The TPU also provides storage for two separate film holders.



EPSON Scan

With the introduction of the newly developed EPSON Scan Software/Driver, users of the EPSON PERFECTION 3170 PHOTO benefit from a high performance, flexible driver that functions also as a stand-alone application. By featuring three separate user modes – Full Auto mode, Home mode and Professional mode – EPSON Scan can be dynamically changed to reflect the scanning tool requirements of all users, from novice to professional. Some of the new features in the professional mode are Multi-marquee, Histogram, Multiple-level Unsharp Mask and Multiple-level Descreening. As a single software/driver solution, EPSON Scan can automatically save scanned images to file in a variety of standard formats.



Before



After

Substantially restore faded colours with EPSON Colour Restoration Technology

Photo Restoration

Among the new EPSON Scan tools are Colour Restoration and Dust Removal. Designed specifically for high quality photo and film scanning, Colour Restoration employs sophisticated technology to substantially restore image colour that has been subjected to fading and other colour loss influences, such as light and airborne contaminants. With the Dust Removal feature, EPSON Scan automatically detects dust on film or negatives, and then makes the necessary adjustments.



Before



After

EPSON Dust Removal software minimises the problem of dust on your originals when scanning film or negatives



EPSON Smart Panel

As a result of its newly designed interface, the EPSON Smart Panel software represents a perfect balance between power and ease-of-use. Scanning to file, E-mail, OCR, multi-page PDF, Web, PDAs and even scanning business cards is little more than a mouse click away.

Business Card Scanning

New to the Smart Panel family of applets is Newsoft's Presto! BizCard 4.0LE. Combining OCR, database and integration technologies, this versatile software allows you to scan business cards which are automatically converted and stored in an easy to search database. You can even synchronize with and export to industry standard desktop applications.

PRINT Image Matching II Technology

Incorporated into the EPSON Smart Panel software is PRINT Image Matching (P.I.M.) II. With P.I.M. II, you can select from 11 different photo scenery types with which to optimise your image. Simply select the scene type that you are scanning and P.I.M. II will apply pre-set image adjustments to give you the best quality image possible.

SYDNEY
3 Talavera Road
North Ryde NSW 2113
Tel: (02) 8899 3666
Fax: (02) 8899 3777

MELBOURNE
Ground Level
1155 Malvern Road
Malvern Vic 3144
Tel: (03) 8823 9200
Fax: (03) 8823 9250

BRISBANE
Level 3, Waterfront Place
1 Eagle Street
Brisbane QLD 4000
Tel: (07) 3360 0219
Fax: (07) 3360 0289

PERTH
Suite 20, Level 3
1060 Hay Street
West Perth WA 6005
Tel: (08) 9480 0418
Fax: (08) 9480 0443

ADELAIDE
Level 1, Carrington House
61-63 Carrington Street
Adelaide SA 5000
Tel: (08) 8237 0518
Fax: (08) 8237 0519

AUCKLAND
245 Hobson Street
Auckland NZ
Tel: (09) 366 6855
Fax: (09) 366 6865

WELLINGTON
Level 6, City Tower
95 Custom House Quay
Wellington NZ
Tel: (04) 473 3494
Fax: (04) 473 4631

ABN 91 002 625 783
09/03

Visit our website:

www.epson.com.au
www.epson.co.nz

COLOUR
IMAGE
SCANNER

EPSON PERFECTION™ 3170 PHOTO Specifications



EPSON PERFECTION 3170 PHOTO	B11B161014
SCANNER TYPE	Flatbed colour image scanner
SUB-SCANNING METHOD	Fixed document and moving carriage
PHOTOELECTRIC DEVICE	6 line alternated colour CCD with On-Chip Microlens
DOCUMENT SIZE	216 x 297mm (A4 - Letter size)
LIGHT SOURCE	White cold cathode fluorescent lamp
OPTICAL RESOLUTION	3,200 x 6,400dpi with Micro Step Drive
OPTICAL DENSITY	3.4D
PIXELS/LINE	81,600 pixels (13600 x 2 line x 3 colours)
OUTPUT RESOLUTION	50 to 6,400, 9,600, 12,800dpi
GRAYSCALE	16-bit (65,536 grayscale levels) external 16-bit (65,536 grayscale levels) internal

COLOUR	48-bit (281,474 billion colours) external 48-bit (281,474 billion colours) internal
---------------	--

SCANNING SPEED	
MONOCHROME, A4 300dpi:	12 sec*1
COLOUR, A4 300dpi:	12 sec*2

SUPPORTED PLATFORMS	Microsoft® Windows® 98/Me/ 2000 Professional/XP Home Edition/ XP Professional (pre-installed model or upgrade of Windows® 98/Me/ 2000 Professional pre-installed model) Mac OS® 8.6 to 9.x, Mac OS® X 10.2.1 or later
----------------------------	---

INTERFACES	USB 2.0** (Type-B receptacle connector) x 1
-------------------	---

ENVIRONMENTAL CONDITIONS	
TEMPERATURE	5° to 35°C (Operating)
HUMIDITY	10% to 80% without condensation (Operating)

**The functionality of the USB port(s) must be ensured by the vendor of the Host.

ELECTRICAL SPECIFICATIONS	
VOLTAGE	AC220 ~ 240V
FREQUENCY	50 to 60Hz
POWER CONSUMPTION	23W (Operating)

OPTIONS	
AUTOMATIC DOCUMENT FEEDER	B12B813342

BUNDLED SOFTWARE	
EPSON Scan	
EPSON Smart Panel	
Adobe Photoshop Elements	
Presto! PixExpress (PDA Software Required)	
Adobe Acrobat Reader (Windows only)	
Online User Guide	

SCANNING SPEED DATA PATTERNS

The thumbnails below show the scanning patterns used to determine scanning speed specifications.



★1
Black Text
(MEMO)



★2
Photo
(Photo courtesy of
ISO/JIS-SCID.
Reprinted by
permission.)

System Configuration for
Scanning speed tests
CPU: Pentium 4 2.4 GHz
RAM: 516MB
I/F: USB 2.0 Hi-Speed
OS: Windows XP Home Edition
Soft: Adobe Photoshop 7.01E

Scanning speed test results vary according to system configuration, dpi setting, and scan mode setting. However, documents and photos other than those pictured above can be substituted without significantly affecting test results.



As an International ENERGY STAR Partner, EPSON has determined that this product meets the International ENERGY STAR guidelines for energy efficiency. EPSON is the registered trademark of SEIKO EPSON Corporation. EPSON STYLUS, PerfectPicture, MicroPiezo, AcuPhoto Halftoning, QuickDry are the trademarks of SEIKO EPSON Corporation. All other names and company names used herein are for identification purpose only and may be the trademarks or registered trademarks of their respective owners. EPSON disclaims any and all rights in those marks. All print samples shown herein are simulations. Specifications are subject to change without notice.

EPSON®