



EasyMP[®] Operation Guide

Multimedia Projector

PowerLite[®] 826W

PowerLite 825

PowerLite 85

Introduction

Making effective use of your projector 6

- Sending Images Via a Network (EMP NS Connection) 6
- Monitor, configure, and control the projector from a remote location 6
- Projecting directly from saved JPEG images on a USB device (Slideshow) .. 6
- Connect a USB cable to your computer and project images from the computer screen (USB Display) 7
- Projecting a computer screen with the optional Quick Wireless Connection USB Key..... 7

Installing the Software 8

- Software Supplied..... 8
- Installing..... 8

Connecting with EMP NS Connection

EMP NS Connection Summary 11

- Two Connection Modes and their Main Functions 11
 - Advanced Connection Mode 11
 - Quick Connection Mode (Only when the optional Wireless LAN unit is installed) 11
 - Main functions..... 11
- Steps for Connecting in Advanced Connection Mode..... 12

Preparing to Connect..... 13

- Preparing the Computer..... 13
 - For Windows..... 13**
 - For Macintosh 13**

Connecting to a Projector on a Network and Projecting..... 14

- Operating the Projector 14

- Operating the Computer 14

- Using the Connection Screen 16

- Using the toolbar..... 18

EMP NS Connection Useful Functions

Projecting Only a PowerPoint Slide Show (Presentation Mode) .. 22

Using Multi-Screen Display 23

- Example of Adjusting the Virtual Display 24
- Procedure before using the Multi-screen Display Function..... 25
- Setting the Virtual Display 25
 - Enable the virtual display driver (Windows only) 25
 - Adjust the Virtual Display 26
- Allocating the image to be projected 30
- Projecting the allocated images 30

Connecting to a Projector on a Different Subnet

Connecting to a Projector on a Different Subnet..... 33

Specifying Either an IP Address or Projector Name and Performing a Search (Advanced Connection Mode Only)..... 34

Performing a Search with a Profile..... 35

- Making a Profile 35
- Searching by Specifying a Profile 36
- Managing a Profile 37

Setting the EMP NS Connection Operation

Using Set options	40
General settings Tab.....	40
Adjust performance Tab.....	41

Using a Computer to Set Up, Monitor and Control Projectors

Changing Settings Using a Web Browser (Web Control)	44
Displaying Web Control	44
Entering the IP address of the projector.....	44
Projector Setup	44
Items in the configuration menu that cannot be set by the web browser.	44
Items that can only be set in the Web browser	45
Using the Mail Notification Function to Report Problems	46
Management Using SNMP	47

Presentations Using Slideshow

Files that can be Projected Using Slideshow	49
Specifications for Files that can be Projected Using Slideshow	49
Slideshow Examples.....	49
Projecting images from a USB storage device	49

Slideshow Basic Operations..... 50

Starting and Closing Slideshow	50
Starting Slideshow.....	50
Closing Slideshow	50
Slideshow Basic Operations.....	50
Rotating the Image.....	51

Projecting Image Files..... 52

Projecting Images	52
Projecting all Image Files in a Folder in Sequence (Slideshow)	53

Setting Image Display Conditions

Appendix

Connection Limitations..... 56

Supported Resolutions	56
Display Color.....	56
Connection Number.....	56
Others	56
When Using Windows Vista.....	57
Limitations when projecting from Windows Photo Gallery	57
Limitations in Windows Aero.....	57

Troubleshooting 58

Problems concerning network functions	59
Cannot connect using EMP NS Connection	59
When a connection is made using EMP NS Connection, the projected image remains as is, and a connection cannot be made from another computer.	59
The projector is not found when EMP NS Connection is started.	60
Cannot connect in Advanced Connection Mode or Wired LAN connection	61
The Slide show cannot be displayed on the desired display when the multi-screen display function is being executed.	61
Applications are no longer displayed from the computer screen when the multi-screen display function is executed.	62
The mouse cursor is not displayed on the computer screen.	62
When connecting with EMP NS Connection the image is not displayed or the image is slow to appear.	62
When a connection is made using EMP NS Connection, a PowerPoint Slide show cannot be started.	63
When a connection has been made using EMP NS Connection, the screen will not be refreshed when using an Office application.	63
Error message when starting up EMP NS Connection.	63
Network settings are not restored after cutting the connection to the computer with EMP NS Connection.	65
Cannot project with Quick Wireless Connection (When using the optional Quick Wireless Connection USB Key).	65
Problem with Quick Wireless Connection USB Key (When using the optional Quick Wireless Connection USB Key).	66
Problems concerning monitoring and control	66
Mail is not sent even if a problem occurs in the projector.	66

System Requirements 68**General Notes 69**

Copyright Notice	69
Trademarks	69

Introduction

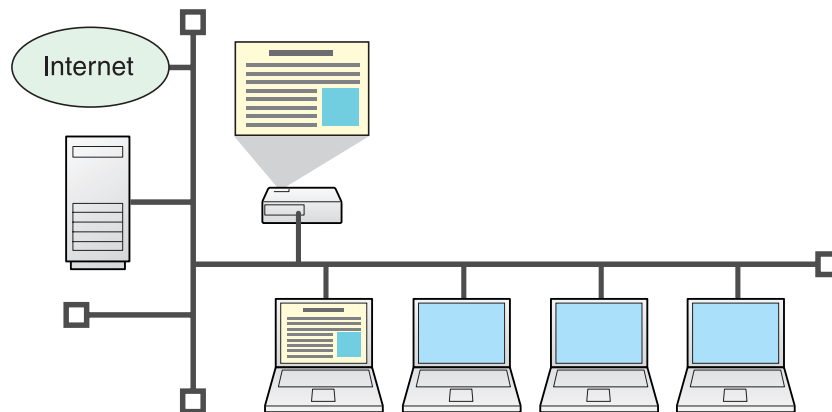
This chapter provides information on functions that allow you to use your projector more effectively.

Making effective use of your projector

This projector is equipped with many useful functions to improve usability. As well as a computer cable, you can connect using various other interfaces such as a USB cable, a USB storage device, or a LAN connection. This allows for a wide range of image input sources depending on your usage environment.

Sending Images Via a Network (EMP NS Connection)

You can hold efficient meetings and presentations by connecting the projector to a network.



• Smooth progress

If the projector is connected to a network, you can share the projector from computers on the network. When projecting data from different computers during a meeting or presentation, you can progress smoothly without changing the signal cable between each computer. Even a distance between the projector and the computer does not cause any problems.

• Various screen transfer functions

- Distribution function 🖱️ p.11
- Switching function 🖱️ p.11
- Multi-screen display 🖱️ p.23
- Presentation Mode 🖱️ p.22

Monitor, configure, and control the projector from a remote location

The following convenient functions collectively manage projectors in various conference rooms.

- Receive an e-mail notification if a problem occurs 🖱️ p.46
- Monitor and detect problems from SNMP Manager on the network 🖱️ p.47
- Set and control the projector by using a standard computer Web browser 🖱️ p.44

Projecting directly from saved JPEG images on a USB device (Slideshow)

You can give presentations by using USB compatible digital cameras or hard disks. By connecting a USB memory to the projector, JPEG images stored on USB devices can be projected as a Slideshow. 🖱️ p.48

Connect a USB cable to your computer and project images from the computer screen (USB Display)

By using the supplied USB cable to connect to a Windows computer, you can project images from the computer. See your *User's Guide* for more information.

Projecting a computer screen with the optional Quick Wireless Connection USB Key


Using the optional Quick Wireless Connection USB Key and Wireless LAN unit, you can quickly connect one projector to one computer for projection. See your *User's Guide* for more information.

Not compatible with the "Network Projector" function which is a standard feature on Windows Vista.

Installing the Software

To use the Network functions, install the software from the supplied CD-ROM (either "EPSON Projector Software for Meeting & Monitoring" or "EPSON Projector Software for Monitoring") onto your computer.

Software Supplied

You can find the following software on the CD-ROM. For system requirements information about this software, see  p.68

- **EMP NS Connection**
Software for sending computer screen images to a connected projector via a network connection.
- **EMP Monitor**
Software that lists the current status of Epson projectors connected to the network, and monitors and controls those projectors. You can collectively manage multiple projectors by using EMP Monitor.

Installing

Make sure you check the following points before starting installation.


- If the computer you are using is running Windows XP, Vista, or 2000 you must be logged on as the Administrator when installing.
- Make sure that you close all running applications before starting installation.



Make sure you are using EMP NS Connection Ver. 2.51. If you are using an older version, it may not be able to connect to the projector correctly. Make sure you install EMP NS Connection Ver. 2.51 from the "EPSON Projector Software for Meeting & Monitoring" CD-ROM supplied with your projector.

Procedure

For Windows

- 1 **Turn on your computer.**
- 2 **Insert the CD-ROM into your computer.**
The installer starts automatically.
- 3 **Click "Easy Install".**
To select software and install it individually, select **Custom Install**. To change the language in which the software is displayed, click **Language**.
- 4 **Check the applications to be installed, and then click "Install".**
- 5 **When the License Agreement screen is displayed, click "Yes".**
- 6 **When the Add-Remove EPSON Virtual Display screen is displayed, click "OK".**
To use Multi-screen display you need to set up EPSON Virtual Display. If you do not want to set it up now, you can do so later.  p.24
- 7 **Click "Exit" to complete the installation.**
When EMP Monitor is selected, software is installed sequentially.

For Macintosh

- 1 **Turn on your computer.**
- 2 **Insert the CD-ROM into your computer.**

3

Double-click the "Installer for Mac OS X" icon in the EPSON window.

Installation starts.

4

Click "Exit" to complete the installation.



- *When installation does not start automatically (Windows only)*
Select **Start - Run**, and in the **Run** dialog box, type the letter for your CD-ROM drive followed by `:\\EPsetup.exe` and then click **OK**.

- *Uninstalling*

For Windows

Select **Start - Settings - Control Panel - Add-Remove Programs** or **Add or Remove Programs** and then remove EMP NS Connection.

For Macintosh

From **Applications**, delete the EMP NS Connection folder.

Connecting with EMP NS

Connection

This section explains how to connect the computer and the projector via a network in Advanced Connection Mode, and the procedure for projecting images of your computer screen with the projector.

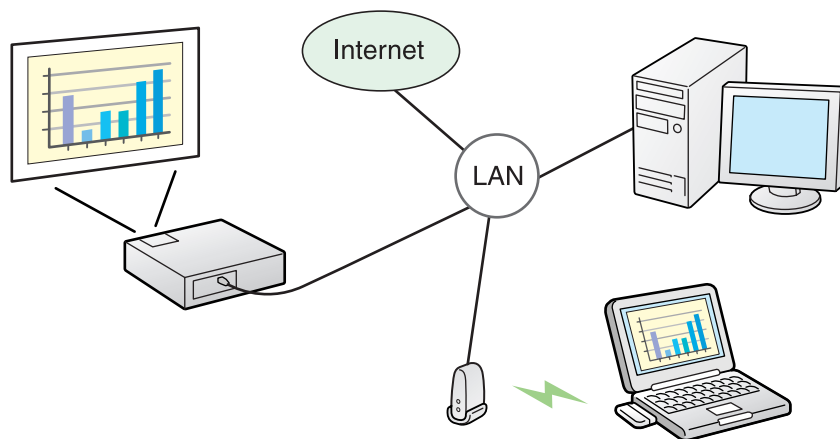
EMP NS Connection Summary

There are two methods of connecting a computer and the projector via a network by using EMP NS Connection.

Two Connection Modes and their Main Functions

Advanced Connection Mode

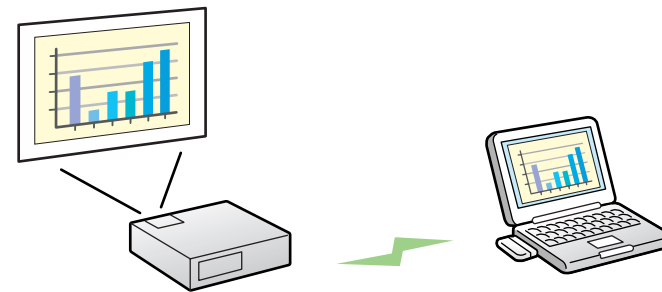
Advanced Connection Mode is an infrastructure connection, and connects to an existing network system via a network cable. When connecting to a network via Wired LAN, connect the projector to the network hub with a commercially available LAN cable. If you install the optional Wireless LAN unit in the projector, you can connect to the network via a wireless LAN access point.



Quick Connection Mode (Only when the optional Wireless LAN unit is installed)

Quick Connection Mode only runs when you install the optional Wireless LAN unit in the projector.

Quick Connection Mode temporarily assigns the projector's SSID to a computer creating an ad hoc connection, and restores the computer's network settings after disconnecting. 🖱 p.13



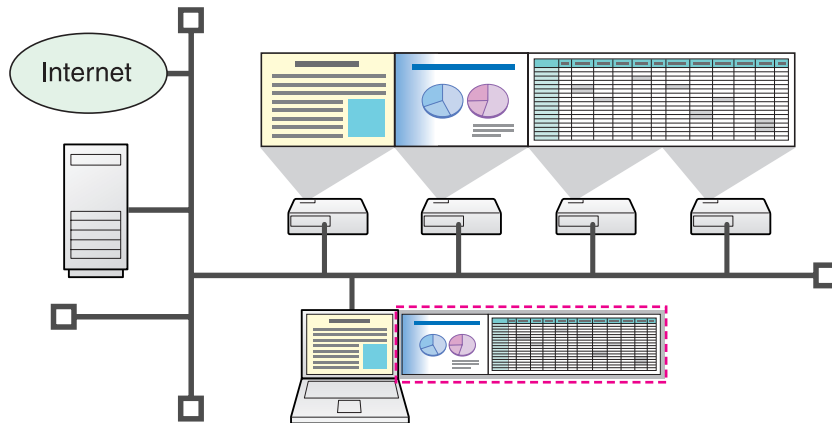
- You can easily connect to a computer and project images from the computer without making network settings.
- This lets you connect easily without a connector cable, and you can connect even if the projector and the computer are at remote locations.

Main functions

You can make meetings and presentations by using the following convenient functions.

- Multi-screen display 🖱️ p.23

You can use different projectors to project a single image as a landscape screen allowing you to project long images such as reports.



- Presentation Mode 🖱️ p.22

This function can project PowerPoint Slide Show running on a computer. You can give stylish presentations by projecting a black screen while making preparations and so on, and when not performing a Slide show.

- Distribution function

The screen being displayed by a remote computer can be simultaneously displayed by up to four projectors on the same network.

- Switching function

By using the meeting switching function, if EMP NS Connection is installed on all of the computers, the presenters can take turns and project their own images without changing cables.

Steps for Connecting in Advanced Connection Mode

Use the following procedure to connect and project in EMP NS Connection Advanced Connection Mode.

You need to perform steps 1 to 4 only the first time you connect.

1. Install EMP NS Connection on the computer to be connected. 🖱️ p.8



2. Make sure your computer is connected to the network. 🖱️ p.13



3. Select network settings on the projector and connect it to the network. See your *User's Guide* for more information.



4. Start EMP NS Connection on the computer and connect with the projector. 🖱️ p.14

* For 2, normally when a computer is connected with the network and used, you do not need to make computer network settings.

Preparing to Connect

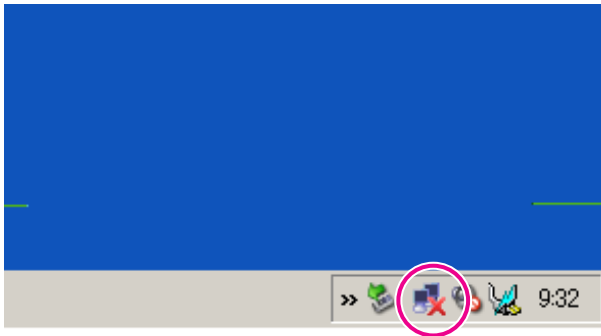
Use the following procedure to prepare the computer and the projector for connection.

Preparing the Computer

For Windows

If you are connecting the computer to the network wirelessly, select the computer's network settings by using the utility software supplied with your wireless LAN adapter. For more information on the utility software, see the User's Guide supplied with the wireless LAN adapter.

For example, as shown in the following illustration, when a red cross is displayed over the network icon, you cannot connect to the projector.



For Macintosh

Set the network port and communication status. For more details on setting the communication status, see the User's Guides for your computer or the AirPort card.

Operating the Projector

Before connecting, put the projector into connection standby status. Make sure the projector network settings are complete, and the projector is connected to network equipment such as a network hub via a commercially available network cable.

Procedure

- 1 Press the [⏻] button on the Remote Control or the Control panel to turn the power on.
- 2 Press the [LAN] button on the Remote Control.

The LAN standby screen is displayed.



Operating the Computer

In the following explanations, unless otherwise noted, Windows screen shots are used. You see the similar screens even when using Macintosh.

Procedure

- 1 **Start EMP NS Connection.**

For Windows

Select **Start - Programs** (or **All Programs**) - **EPSON Projector** - **EMP NS Connection**.

For Macintosh

Double-click the Applications folder of the hard drive volume in which EMP NS Connection is installed, and then double-click the EMP NS Connection icon.

- 2 **Select "Advanced Connection Mode" and then click "OK".**

The projector search results are displayed. To always connect using Advanced Connection Mode, select **Set the selected Connection Mode as the default mode for future connections**.

- 3 **Select the projector you want to connect to, then click "Connect".**

If the projector you want to connect to is not displayed in the search results, click the **Automatic search** button. The search takes about 30 seconds.

For details on the connection screen, see Using the Connection Screen. 🖱️ p.16

4

When Projector keyword is set to "On" from the projector, the keyword entry screen is displayed. Enter the keyword displayed on the LAN standby screen, then click "OK".

When the connection is complete, the computer screen is projected. The following EMP NS Connection toolbar is displayed on the computer screen. You can use this toolbar to operate the projector and make settings, and to disconnect the network connection. For details on using the toolbar, see the following section.

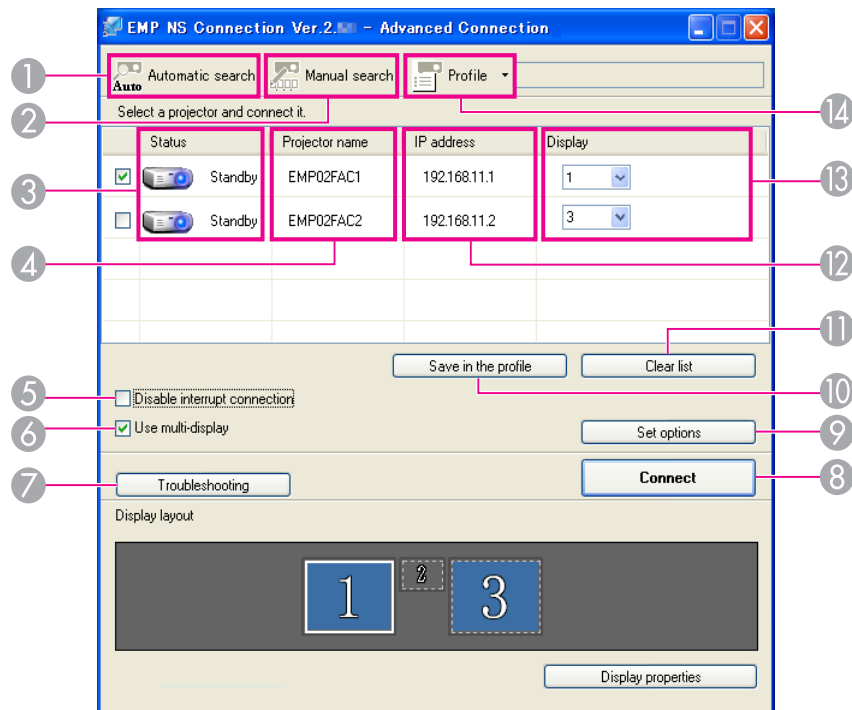


When changing presenters and so on, and when continuously connecting from another computer, start EMP NS Connection from the computer you want to connect. The computer that is currently connected is disconnected, and it is then connected with the computer that is trying to connect now.

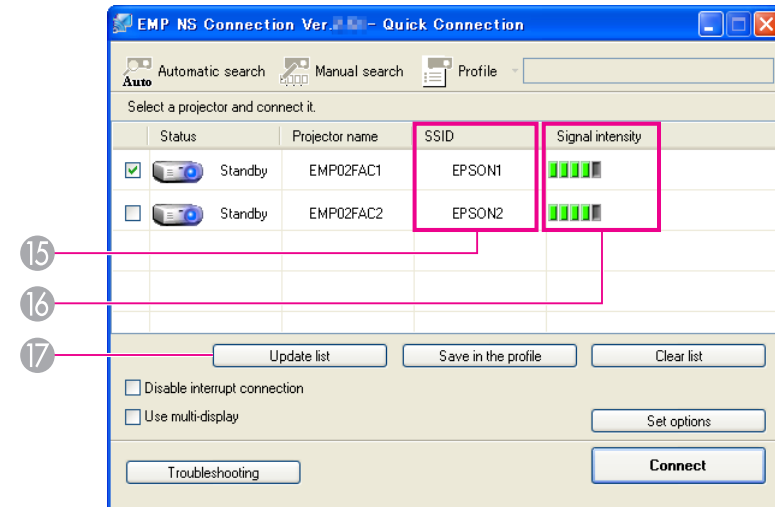
Using the Connection Screen

Select EMP NS Connection to display the following screen. The operation of each button or item is described in the following table.

When the system starts in **Advanced Connection Mode**.



When the system starts in **Quick Connection Mode**.



①



Automatic search

In Advanced Connection Mode, you can search for available projectors on the network system that the computer is connected to.

In Quick Connection Mode, you can search for the projector based on the SSID.

②









Manual search

In Advanced Connection Mode, you can search for a projector based on a specified IP address or Projector name.

In Quick Connection Mode, you can search for the projector based on the SSID selected from a list.

③ Status

The following six icons indicate the status of the detected projectors.

	Standby	Select for connecting.
	Busy	Select for connecting. When you click Connect , the computer currently connected is disconnected and your computer is connected.
	Busy (Disable interrupt connection)	Cannot be selected. Disable interrupt connection is set on another computer which is already connected.
	Currently in use by another application	The projector's configuration menu is open. You can select it after closing the configuration menu and running the search again.
	Searching	Displayed while running Manual search or Profile.
	Not found	Displayed when a projector cannot be found as a result of Manual search or Profile. In Quick Connection Mode, you can only select multiple projectors with the same SSID.


④ Projector name

The projector's name is displayed.

⑤ Disable interrupt connection

Check the box to prevent an interrupt connection by other computers while connected to the selected projector.

⑥ Use multi-display

Check the box to use the Multi-screen display function. When this is selected, Display layout and Display properties are displayed at the bottom of the screen.  p.23


⑦ Troubleshooting

If there is a problem and you cannot have a connection, press this button to open the EMP NS Connection Troubleshooting screen.


⑧ Connect

Connect to the projector you selected from the search results list. When a connection is made with a projector, a toolbar is displayed.

⑨ Set options

You can make general setting options such as the processing method when EMP NS Connection starts. For details, see  p.40

⑩ Save in the profile

Saves the results of a search for projectors on the network as a Profile.  p.35


⑪ Clear list

Deletes all search results.


⑫ IP address (Advanced Connection Mode only)

The projector's IP address is displayed.

⑬ Display

(Select the number displayed when **Use multi-display** is selected.  p.30

⑭ Profile

You can search for a projector on the network using a Profile saved using Save in the profile.  p.35

⑮ SSID (Quick Connection Mode only)

The projector's SSID is displayed.

⑯ Signal intensity

This is displayed when the connection is made in Quick Connection Mode. As the Signal intensity increases, so does the number of lit indicators.

⑰ Update list (Quick Connection Mode only)

Updates Status and Signal intensity.

Using the toolbar

The toolbar is displayed on the computer screen after EMP NS Connection starts and a connection is made with the projector. You can use this toolbar to operate and make settings for the projector.




Select target projector

Click to limit the projectors operated from the toolbar when projecting from multiple projectors using the distribution function or Multi-screen display. The indication below the icon shows the projectors that can be controlled.

ALL indicates that all of the connected projectors can be controlled.

For example, when "1, 3" is displayed, projectors No. 1 and No. 3 can be controlled.

Click  to display the following screen.

	No.	Projector name	Display	
<input checked="" type="checkbox"/>	1:	EMP02FAC1	1	
<input checked="" type="checkbox"/>	2:	EMP02FAC2	1	
<input checked="" type="checkbox"/>	3:	EMP02FAC3	1	

1

2

3

- 1 Select the projector to be controlled.
- 2 Indicates the No. of an allocated projector. This No. indicates the No. of the projector that you can control from the toolbar.
- 3 Indicates the status of the projector.



Stop

Stops projection while connected to the projector. A black screen is projected while stopped. Audio does not stop. To stop the audio, or to display a User's Logo while projection is stopped, use the A/V Mute function.



Show

Releases Stop or Pause.




Pause

Pauses projected images while connecting to the projector. Audio does not Pause.




Presentation Mode

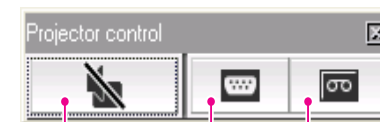
Each time this is clicked, Presentation Mode switches between enabled/disabled.  p.22



Projector control

While the projector is connected to the network, the projector's A/V Mute, Switch PC source and Switch video source functions can be controlled from the toolbar.

Click  to display the following toolbar.



4

5

6



4 A/V Mute

The same function as the [A/V Mute] button on the Remote Control. See your *User's Guide* for more information.



5 Switch PC source

The Source alternates between Computer input port and LAN each time you click.




6 Switch video source

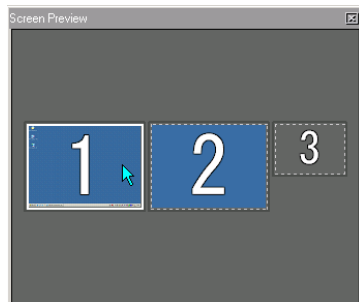
The Source alternates between the S-Video input port and Video input port each time you click. The projector will not switch to the S-Video input if there is no cable connected to the port.




Screen Preview

Displays the multi-screen preview screen.

Click  to display a preview with the settings you have made. Click the displays to enlarge each Screen Preview to full-screen.



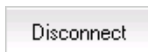
Set options

Transmission performance during the transfer of computer images can be adjusted.  p.40



Movie Sending Mode

Not enabled on this projector. The message "The connected projector cannot play back movies." is displayed.



Disconnect

Disconnects the connection to the projector.



Signal intensity

This is displayed when the connection is made in Quick Connection Mode. As the Signal intensity increases, so does the number of lit indicators.



Switch toolbar display

The toolbar display is switched as follows. The toolbar display remains as is until switched again.

Full



Normal



Simple



EMP NS Connection Useful Functions



This chapter explains those functions that may be useful in a meeting or presentation, such as the function which allows you to send images to multiple projectors from a single computer (Multi-Screen Display).

Projecting Only a PowerPoint Slide Show (Presentation Mode)

In Presentation Mode, the images are only displayed when performing a PowerPoint Slide Show on a computer. When you stop Slide Show, the projector displays a black screen. This is useful when you only want to display the Slide Show.

In addition to PowerPoint, Keynote is compatible with Presentation Mode for Macintosh.

Procedure

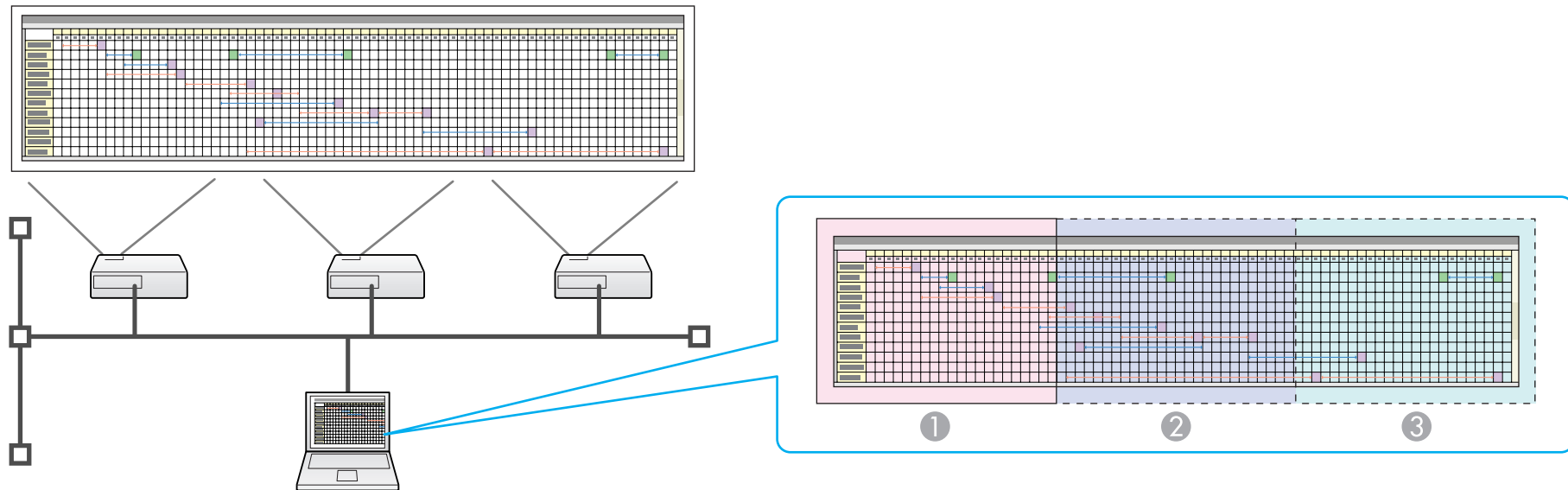
- 1 **If necessary, select the projector you want to control.**
☞ p.18
- 2 **Click the  button on the toolbar.**
Presentation Mode begins.
- 3 **Click the  button again to exit Presentation Mode.**

Using Multi-Screen Display

Multi-screen display mode allows you to project different images from multiple projectors that are connected to a single computer.

With Windows, multiple virtual displays can be set in the computer, and each image can be projected by the projector. This function is not available with Windows Vista due to restrictions in the Windows Vista specifications.

For Macintosh, an external monitor must be connected to the computer to enable the function. While the following explanation refers to virtual display, in the case of Macintosh, the operation relates to the screens displayed on the physically connected monitor.

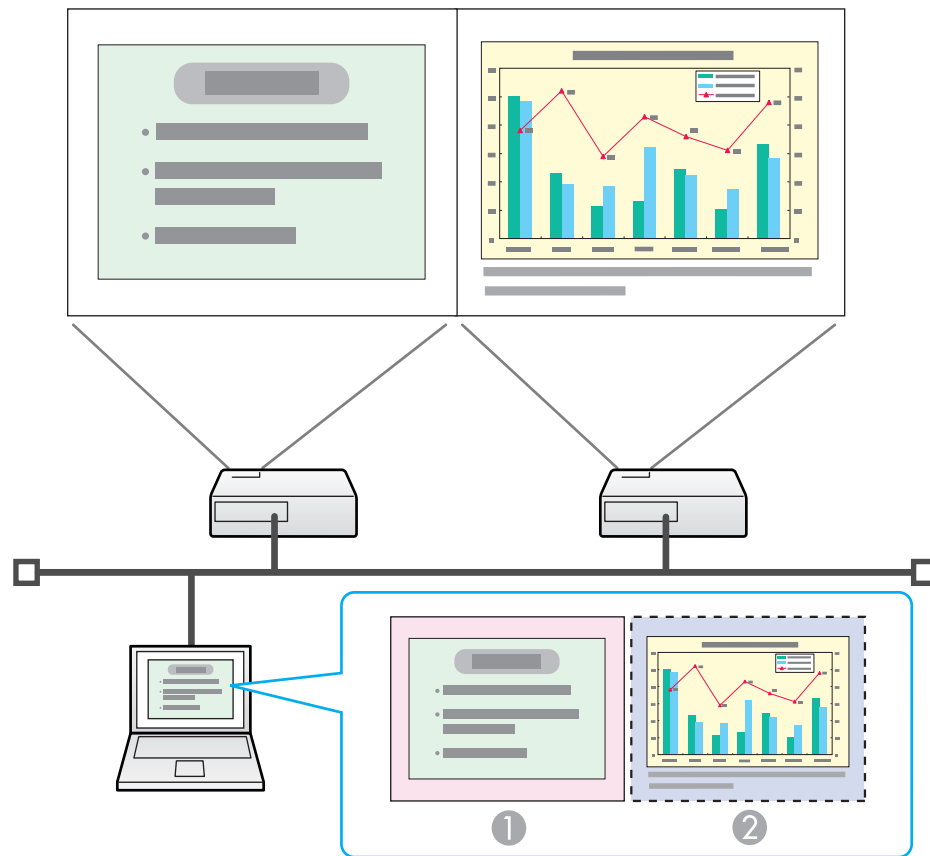


- ① Actual monitor image
- ② Image of virtual display1
- ③ Image of virtual display2

Example of Adjusting the Virtual Display

By arranging the virtual display allocation, you can project only the image that you want to show or project different images from left to right in a presentation.

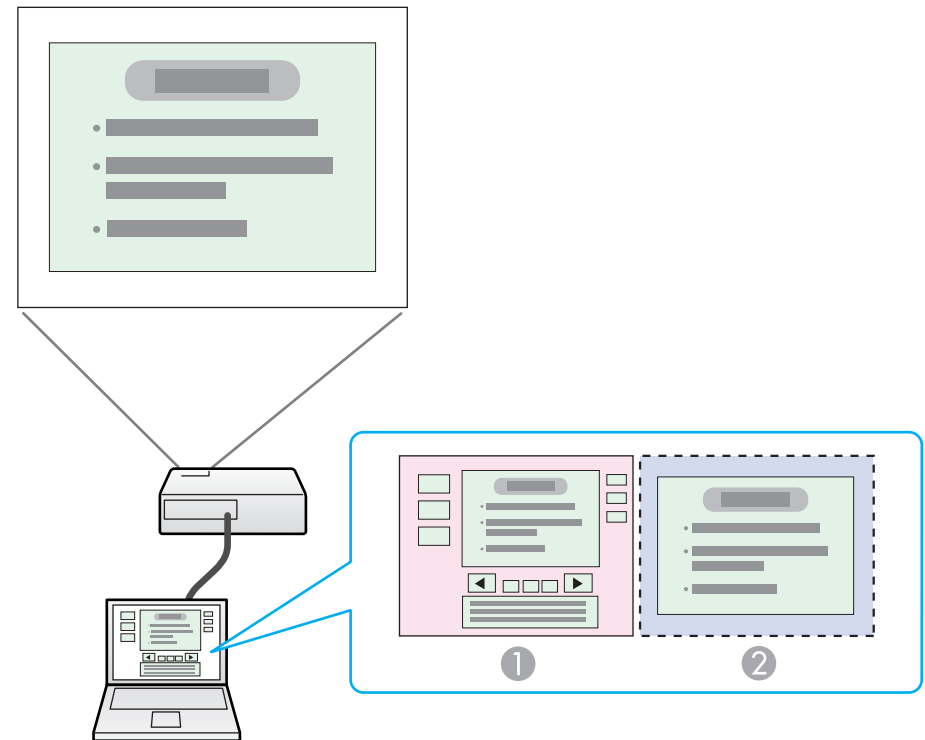
Arrangement example 1



- 1 Actual monitor image** PowerPoint file

- 2 Image of virtual display** Excel file

Arrangement example 2



- 1 Actual monitor image** PowerPoint file presenter tools
- 2 Image of virtual display** Slide Show using a PowerPoint file

Procedure before using the Multi-screen Display Function

1. Setting the Virtual Display 🖱️ p.25

In a Windows environment, enable the virtual display driver as necessary. And, for both Windows and Macintosh, set up the virtual display arrangement.

2. Allocating the image to be projected 🖱️ p.30

Open the file to be projected, and then move the screen to the virtual display according to the actual projection arrangement.

3. The allocated image is projected 🖱️ p.30

Allocate a virtual display number to a projector that is connected through the network, and then start projection.

Setting the Virtual Display



Enable the virtual display driver (Windows only)

Enable the virtual display driver. Those users listed below do not have to perform this operation.

- Those users who have enabled virtual displays installing EMP NS Connection.

- Those users who are using Macintosh computers.

Procedure

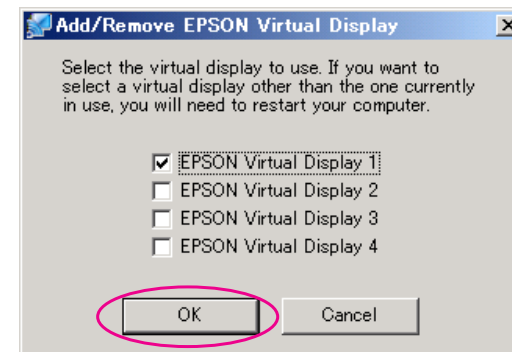
1 Start Windows on the computer, then select "Start" - "Programs" (or All Programs) - EPSON Projector - Add-Remove EPSON Virtual Display.

The Add-Remove EPSON Virtual Display screen is displayed.

2 Select the virtual display you want to use.

Up to four monitors can be added. In this example, a single virtual display is to be used. When setting multiple virtual displays, select as many displays as is necessary. Any one of the displays can be selected.

3 Click "OK".



When you click **OK**, the drivers for the virtual display are enabled. At this point, it is normal for the display to flicker. Wait for the Add-Remove EPSON Virtual Display screen to close.

Adjust the Virtual Display

After starting EMP NS Connection, the setup of the virtual displays varies between Windows and Macintosh. The procedures are explained separately below.



Check the following points before starting EMP NS Connection when connecting via Wireless LAN. If the following points are not set correctly, Multi-screen display cannot be used.

- The SSID for the computer and each projector must be the same.
 - The Wireless LAN system for the computer and each projector's Wireless LAN card must be the same.
- You can modify the SSID and Wireless LAN system for the projector from the Network menu in the projector's configuration menu. See your User's Guide for more information.

Procedure

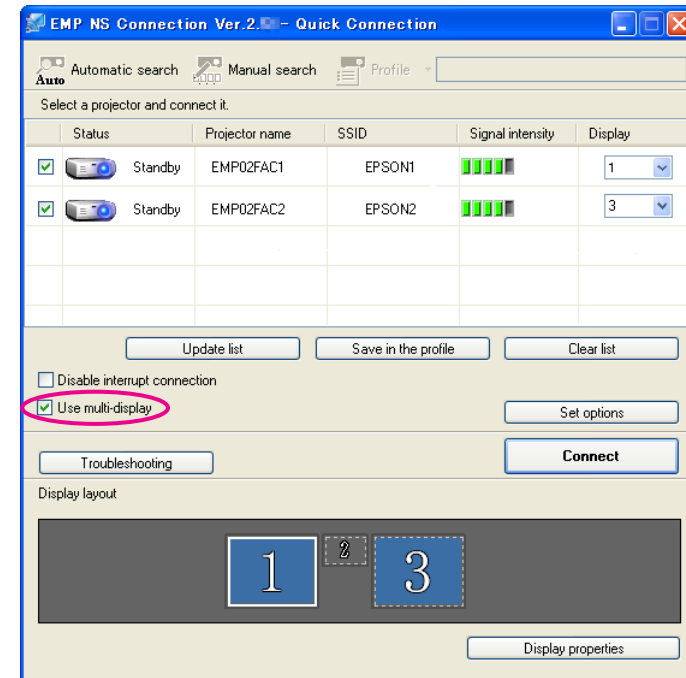
For Windows

1

Select "Start" - "Programs" (or All Programs) - "EPSON Projector" - EMP NS Connection to start EMP NS Connection.

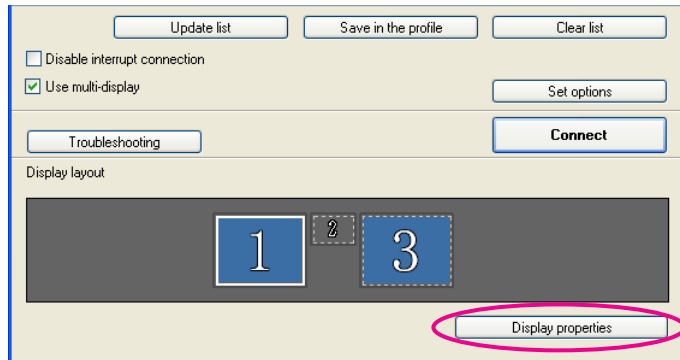
2

Select the "Use multi-display" check box.



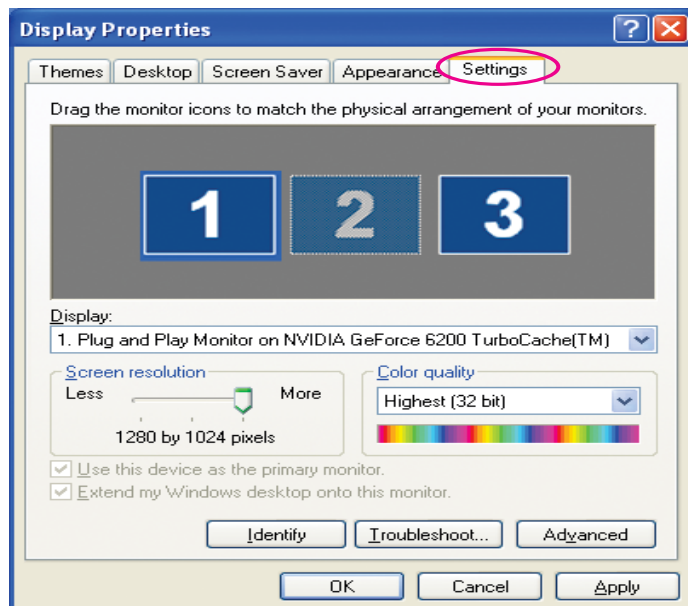
Display layout and Display properties are added at the bottom of the screen.

3 Click "Display properties".



The Display Properties screen will be displayed.

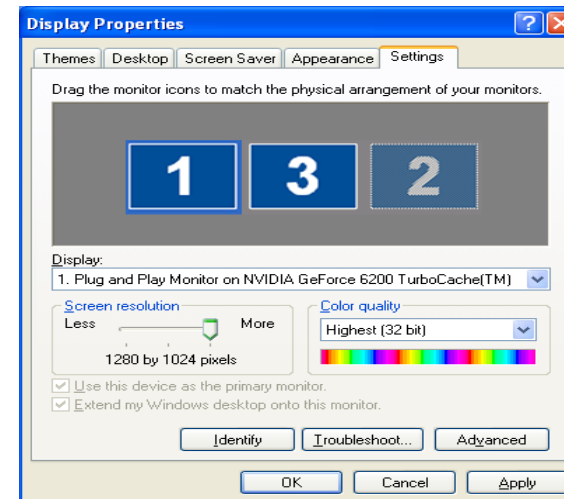
4 Click the "Settings" tab.



5 Drag the displayed monitor icon and place it where desired.

Here, the actual monitor (1) is placed on the left, while the virtual monitor (3) is placed on the right.

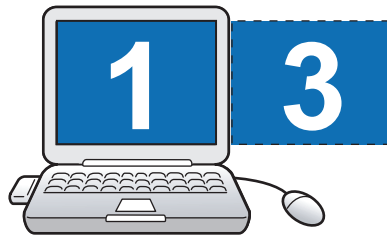
When the computer has multiple display output terminals, the numbers assigned to the virtual terminals will be sequential to those of the physical terminals.




- When an external monitor is connected as a secondary monitor, the image for that screen cannot be projected.
- Depending on the hardware, the number of the secondary monitor may be other than "2". When the monitor icon is displayed on the screen, click the icon and confirm that the monitor type shown under "Display" is other than "secondary".

- For Screen Resolution settings, see the following.  p.56

When the monitor icon is arranged, a virtual display is connected as the image like below.



- 6 Click the "OK" button. The Display Properties screen closes.

Next, allocate the images you want to project.  p.30

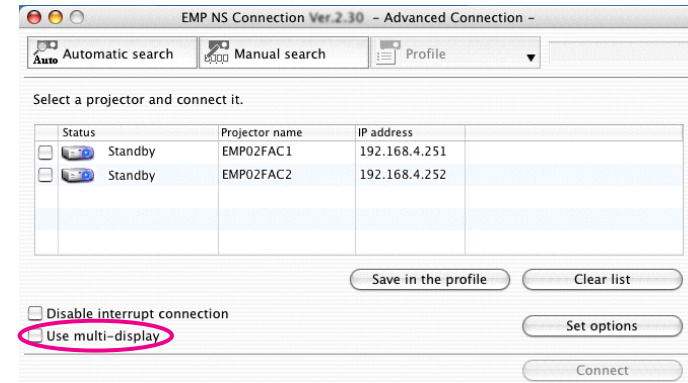
For Macintosh

- 1 Start EMP NS Connection. Double-click the "Applications" folder of the hard drive volume in which "EMP NS Connection" is installed, and then double-click the EMP NS Connection icon to start EMP NS Connection.

Select Advanced Connection Mode and then perform startup.

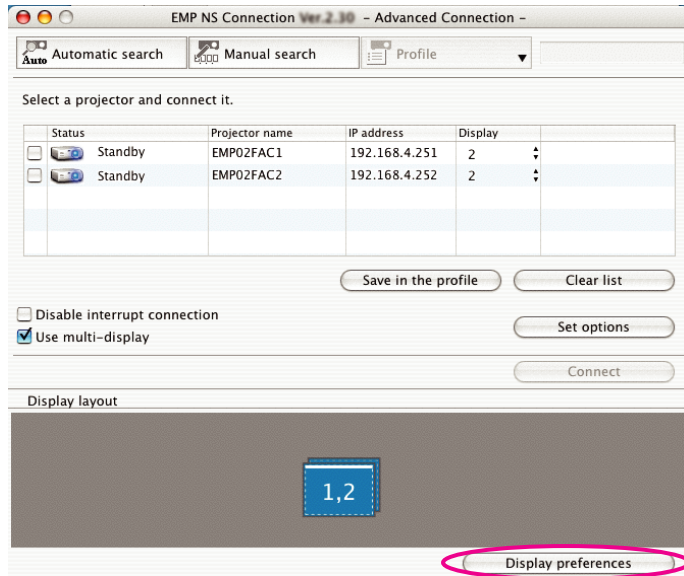
2

Select the "Use multi-display" check box.



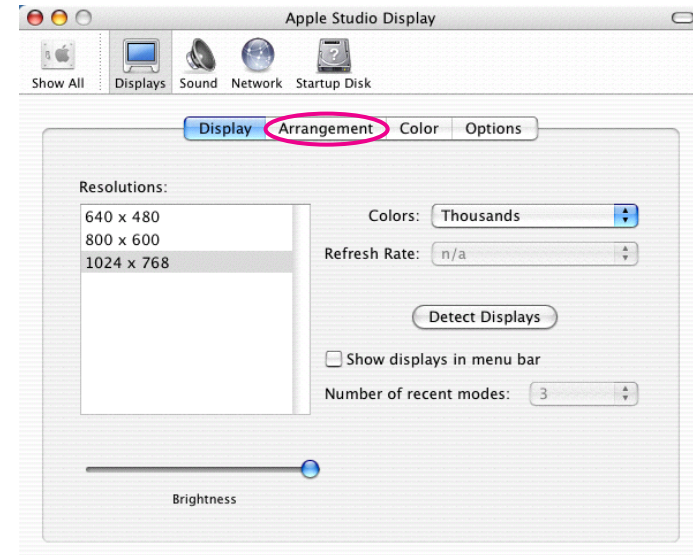
Display layout and Display preferences are added at the bottom of the screen.

3 Click "Display preferences".

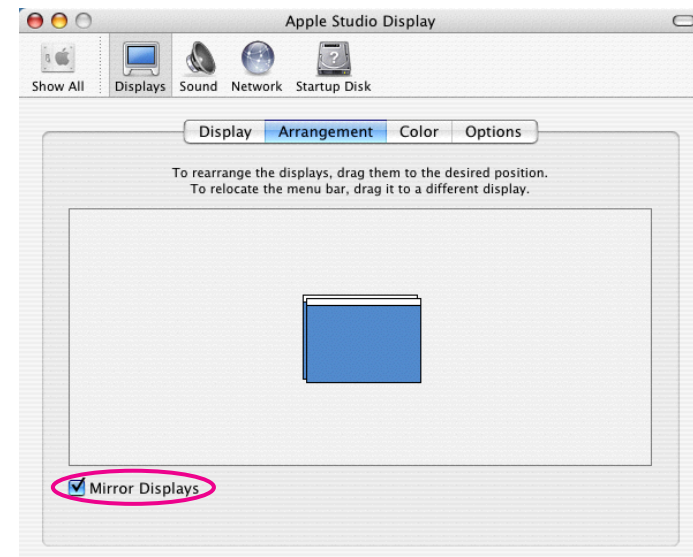


The display setting screen is displayed.

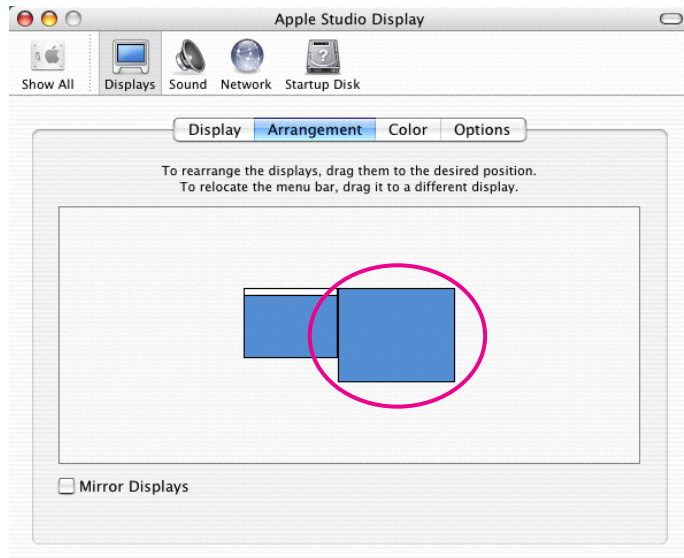
4 Click "Arrangement".



5 De-select "Mirror Displays".



- 6 Drag the displayed monitor icon and place it where desired.



- 7 Close the display setting screen.

Allocating the image to be projected

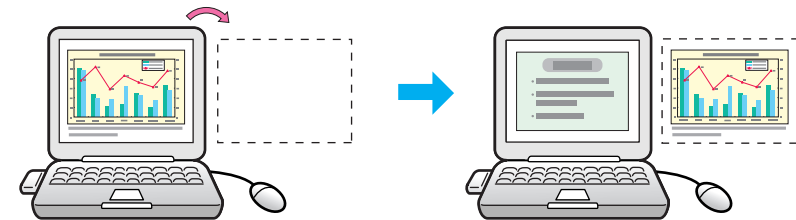
This section explains the virtual display for arrangement example 1.
 p.24

Procedure

- 1 Open the file to be projected.
 Start the PowerPoint and Excel files.

- 2 Drag the window to the desired virtual display monitor, and allocate it where the image is to be projected.

Drag the Excel window to the right until it cannot be seen. As a result, the PowerPoint window appears on the actual monitor, while the Excel window appears on the virtual display on the right.

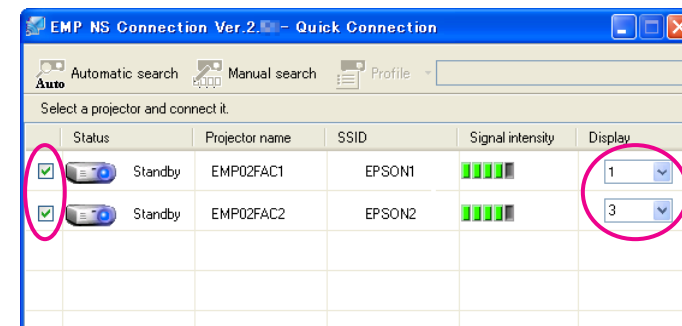


Projecting the allocated images

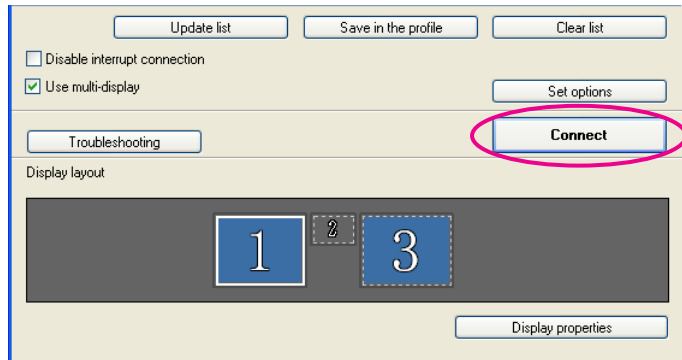
This section explains the virtual display for arrangement example 1.
 p.24

Procedure

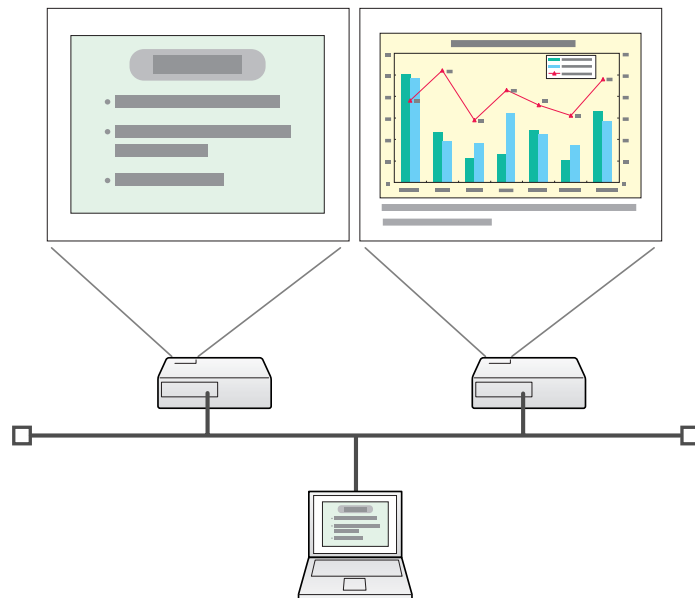
- 1 Select the number of the virtual display to allocate on the Display, and set which image to be projected from which projector.



2 Click "Connect".



The image allocated to each projector is projected.




In a Windows environment, you cannot view the image being sent to a virtual display on the computer. To adjust the image on the vir-

tual display, you must do so while viewing the projected image. To perform mouse-based operations on the virtual display, move the mouse pointer in the direction of the virtual display, such that the pointer appears on the virtual display.

3 To terminate multi-screen display, click "Disconnect" on the toolbar.



In a Windows environment, if the virtual display driver has been enabled such that the mouse pointer can be moved outside the limits of the screen, there may be occasions when you lose track of the location of the pointer. When you are not using a virtual display, clear the check mark against the virtual display under Add-Remove EPSON Virtual Display, such that the mouse pointer cannot be moved outside the limits of the screen. To subsequently use multi-display again, place a check mark against the required display under Add-Remove EPSON Virtual Display. To clear a check mark, see the following.  p.25

Connecting to a Projector on a Different Subnet

This chapter explains how to connect a computer to a projector on a different sub-net via a Wired LAN or a wireless LAN access point on an existing network system.

Connecting to a Projector on a Different Subnet

By default, this application only searches for projectors on the same subnet as the computer. Therefore, even if you perform a search for projectors on the network, ones on a different subnet will not be found. You can, however, identify and connect to a projector on a different subnet as follows:

- Specify either an IP address or Projector Name and perform a search.

The IP Address can be input directly. Also, provided the Projector name has been registered on the DNS server, you can perform a search simply by inputting that Projector Name. 🖱 p.34

- Performing a search based on a Profile

Once you have performed a search for a projector on a different subnet by specifying either an IP Address or a Projector Name, you can save the search as a Profile with an easy-to-remember name, and then use that Profile whenever you subsequently want to search for a projector on a different subnet. 🖱 p.35



If a search fails to find a projector, the most likely causes are as follows. Proceed as appropriate, depending on the cause of the failure.

For both Windows and Macintosh

- *The Wireless LAN signal is either out of range or weak.*
Check whether there is anything that could be interfering with the signal.

When the optional Wireless LAN unit is installed on the projector, and Macintosh is connected to a Wireless LAN

- *AirPort: On is not set, or an appropriate access point is not selected.*
Check whether AirPort is set to On. Or, check whether an appropriate access point has been selected.

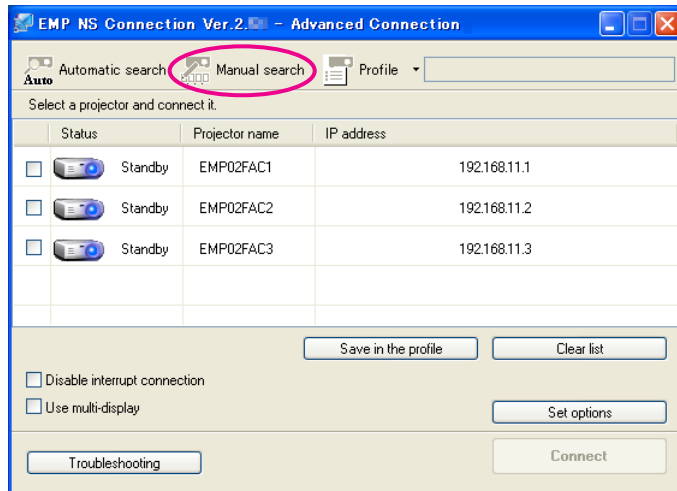
Specifying Either an IP Address or Projector Name and Performing a Search (Advanced Connection Mode Only)

In the following explanations, unless otherwise noted, Windows screen shots are used.

You see the similar screens even when using Macintosh.

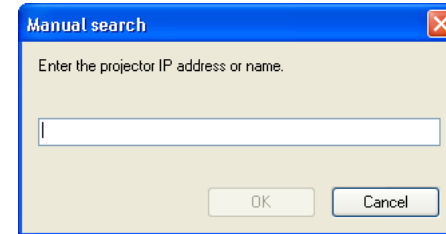
Procedure

- 1 Click "Manual search" on the EMP NS Connection projector selection screen.



2

- 2 Enter the IP Address or the Projector Name for the projector you want to connect to, and click "OK".



The search results are displayed on the EMP NS Connection projector selection screen.

Provided the target projector has been identified, select that projector, and then click Connect to establish a connection.

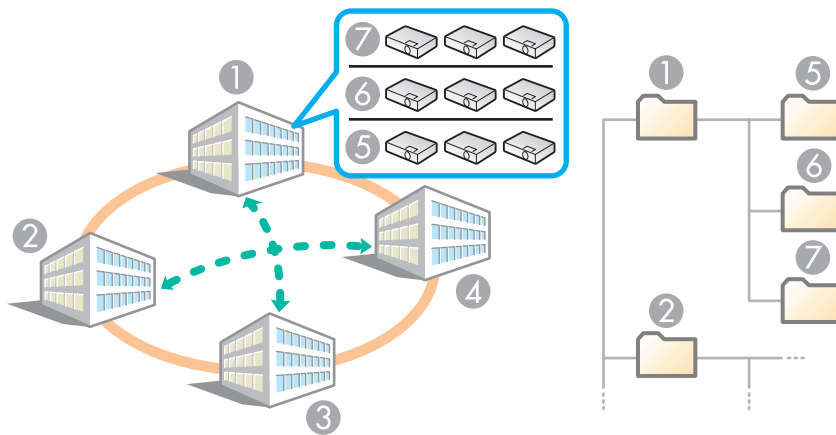
When you will always be using that projector, save the search as a Profile, so that you do not have to specify the relevant details every time you perform a search. ➡ p.35



When you use Manual search in Quick Connection Mode, you can specify the SSID. When there are a lot of projectors you can narrow the search field by using SSID.

Performing a Search with a Profile

You can save a search for a frequently used projector as a Profile. A Profile is a file containing all of the information pertaining to a given projector, such as the Projector Name, its IP Address, and SSID. By specifying the profile each time you perform a search, there is no need to enter IP Address or Projector Name. The target projectors can be found quickly by creating groups of profiles, managing them with folders, for each place where projectors are set up.



- | | |
|--------------|-----------|
| ① Building A | ⑤ Floor 1 |
| ② Building B | ⑥ Floor 2 |
| ③ Building C | ⑦ Floor 3 |
| ④ Building D | |

This section explains how to create and edit a Profile.

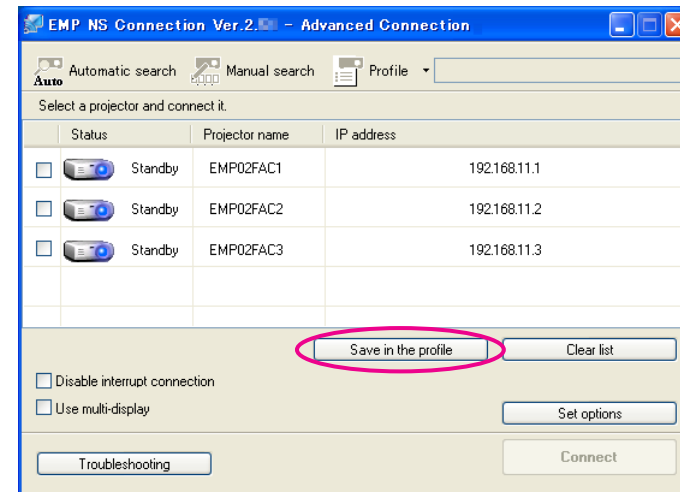
Making a Profile

Profiles are made by saving search results.

For details on how to edit a previously saved Profile, see the following section. p.37

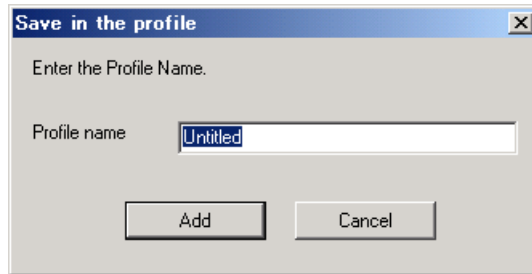
Procedure

- 1 When the projector is displayed on the EMP NS Connection projector selection screen, click "Save in the profile".



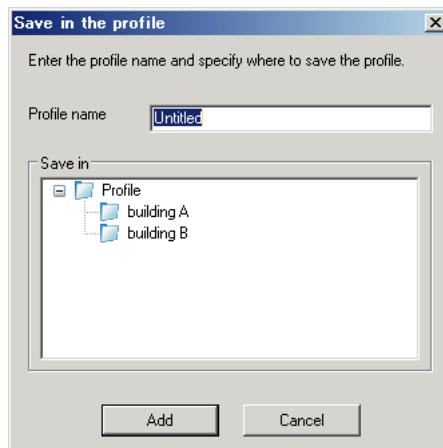
The Save in the profile screen will be displayed.

2 Enter a Profile name and then click "Add".

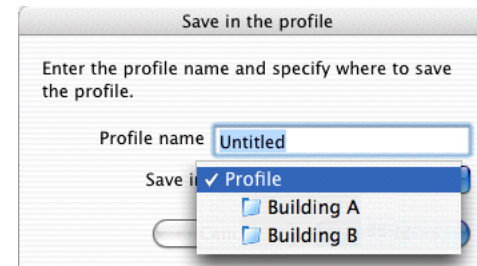


Projector information is registered in the Profile.
If you have previously saved a Profile, you are prompted to confirm whether that Profile can be overwritten. To save a Profile with a different name, select Save as. If you have created a folder for a Profile, the following screens are displayed. After entering the Profile name and selecting the **Save in** destination, click **Add**.

For Windows



For Macintosh



For details on how to create a folder for a Profile, see the following section.
p.37

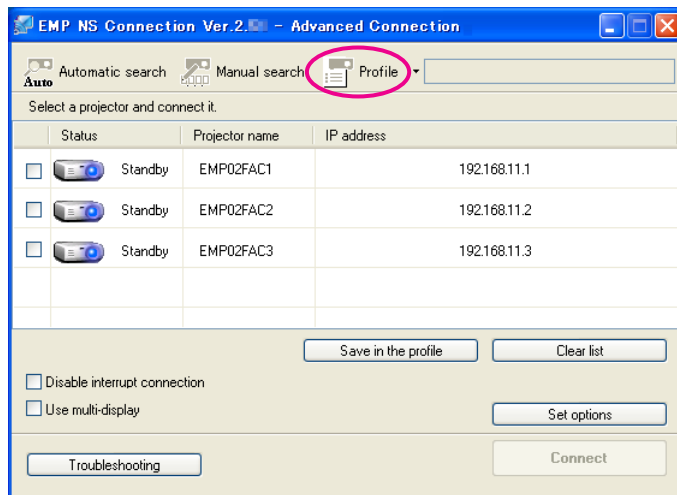
Searching by Specifying a Profile

You can search by specifying the Profile you created.

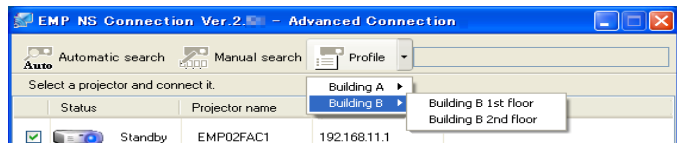
Procedure

- 1 Click "Profile" on the EMP NS Connection projector selection screen.

If no Profile is registered, you cannot select Profile.



- 2 From the menu that is displayed, select the projector you want to connect to.



The search results are displayed on the EMP NS Connection projector selection screen.

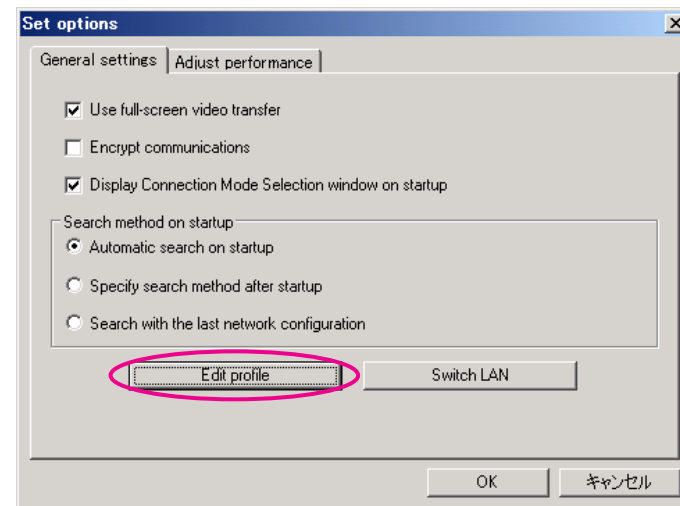
Provided the target projector has been identified, select that projector, and then click **Connect** to establish a connection.

Managing a Profile

You can change the name and the hierarchical structure of the Profile.

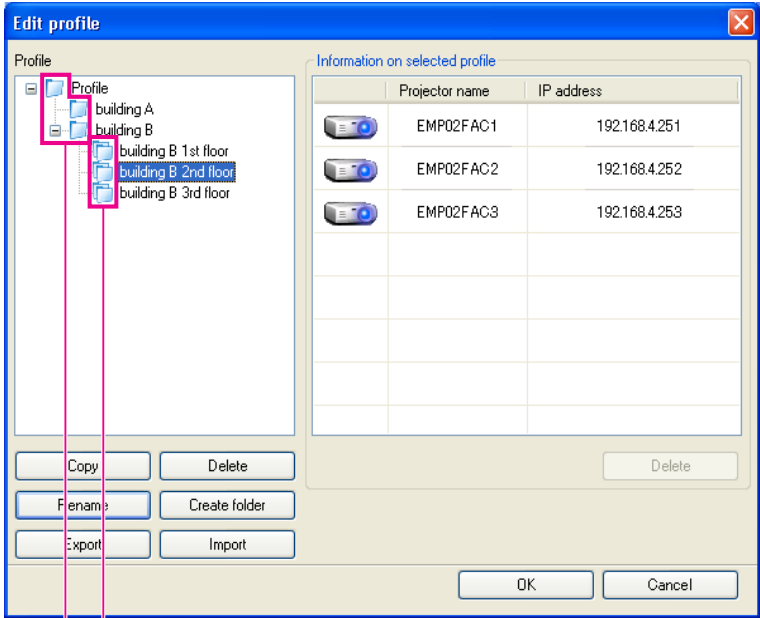
Procedure

- 1 Click "Set options" on the EMP NS Connection main screen.
The Set options screen is displayed.
- 2 Click "Edit profile".



The Edit profile screen is displayed.

3 Edit the contents registered in the Profile.



- 1
- 2

- 1 : Indicates a folder.
- 2 : Indicates a Profile.

Profile	
Item	Function
Profile	You can display the registered Profile. You can manage it by creating a folder. You can change the order of the Profile or the folder by dragging & dropping.

Profile	
Item	Function
Copy	You can Copy the Profile. The copied Profile is saved in the same folder as the original with the same name.
Delete	You can Delete the Profile or the folder.
Rename	You can display the Rename dialog box and rename the folder or the Profile. You can enter up to 32 characters in the Rename dialog box.
Create folder	You can create a new folder.
Export	You can export a profile.
Import	Used when you want to read and use an exported Profile.

Information on selected profile	
Item	Function
Projector name, IP address	You can display the projector information registered in the Profile.
Delete	You can delete the information for the selected projector. When all projector information is deleted, the profile is also deleted.

4 Click "OK".

Saves your edits and closes the Edit profile screen.

Setting the EMP NS Connection Operation

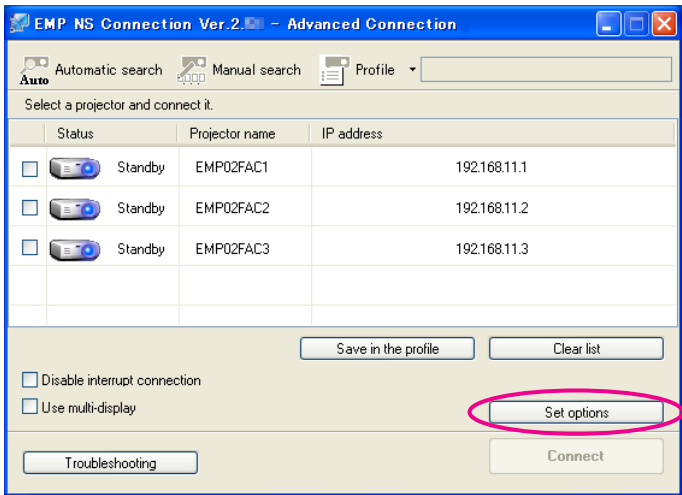
You can make setting options such as the processing method when EMP NS Connection starts.

Using Set options

You can make setting options such as the processing method when EMP NS Connection starts.
Call the Set options from the EMP NS Connection main screen.

Procedure

- 1 Click "Set options" on the EMP NS Connection main screen.

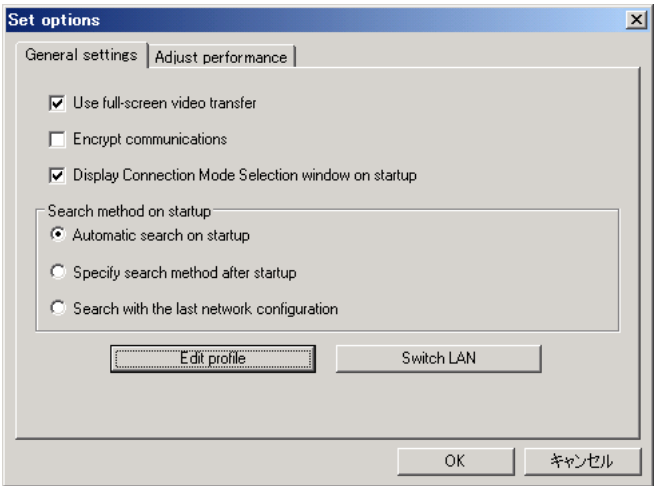


The Set options screen is displayed.


- 2 Set each of the items.

Confirm the details of the set items in the next step. When you have made all the necessary settings, click **OK** to close the Set options screen.

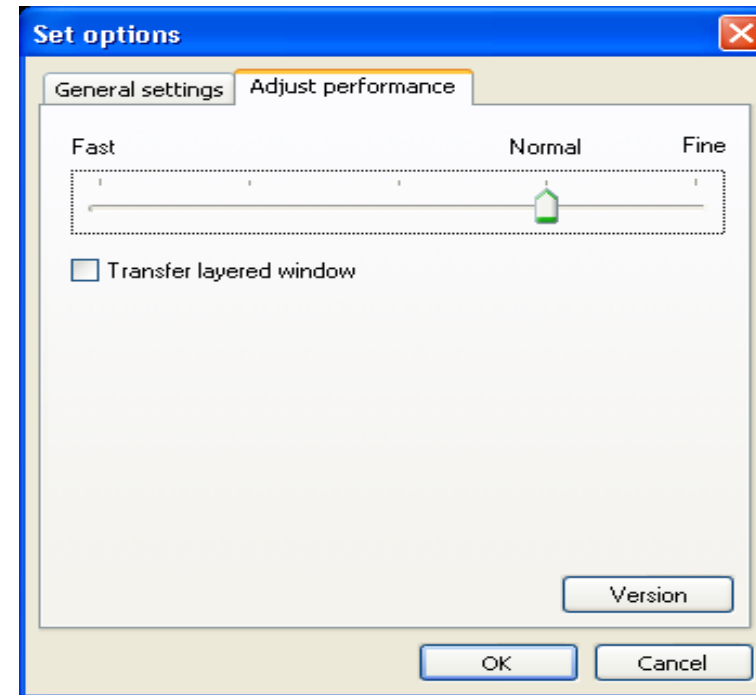
General settings Tab



Use full-screen video transfer	Not enabled on this projector.
Encrypt communications	Select to Encrypt and transmit data. Even if data is intercepted, it cannot be decrypted. When using Quick Connection Mode, make sure you always select this checkbox.
Display Connection Mode Selection window on startup	Set whether or not the Quick Connection Mode/Advanced Connection Mode screen is displayed when EMP NS Connection starts. Clear this checkbox once you have settled on a regular startup method.

Search method on startup	<p>Select from the following projector search methods executed when EMP NS Connection is started.</p> <p>Automatic search on startup</p> <p>Specify search method after startup</p> <p>Search with the last network configuration</p>
Edit profile	The Edit profile dialog box is displayed.  p.37
Switch LAN	<p>Windows only</p> <p>The Switch Network Adapter dialog box is displayed. This is used when it is necessary to switch the network adapter to be used for a search when a computer has multiple adapters.</p> <p>By default, all of the network adapters are used to perform a search. When a Wired LAN is always used as the connection method, select a Wired LAN adapter.</p>

Adjust performance Tab



Performance adjustment slider	<p>The performance can be set to Fast, Normal, and Fine.</p> <p>Set to Fast when movie projections are interrupted.</p>
--------------------------------------	-------------------------------------------------------------------------------------------------------------------------


Transfer layered window

Windows only (excluding Windows Vista)

Set whether or not to transfer a layered window.

The layered window is in use when contents such as messages displayed on the computer are not projected by the projector. Select this checkbox to project contents such as messages that use the layered window.



When you click  on the toolbar, only the Adjust performance tab is displayed.

Using a Computer to Set Up, Monitor and Control Projectors

This chapter explains how to use a computer that is connected to the network to change projector settings and to control the projector.

Changing Settings Using a Web Browser (Web Control)

You can set up and control the projector from a computer by using the Web browser of a computer that is connected to the projector via a network. Setup and control operations can be performed remotely if this function is used. In addition, since you can use the computer's keyboard, entering characters required for the setup is easier.

Use Microsoft Internet Explorer 6.0 or later as the Web browser. If using a Macintosh, you can also use Safari. If, however, you are using Safari under Macintosh 10.2.8, some of the Web control radio buttons may not display properly.



Setup and control with a Web browser are possible if **Communication On** is set from the **Extended** menu of the projector's configuration menu, even if the projector is in **Standby Mode** (when the power is off).

Displaying Web Control

Display Web Control with the following procedure.



If your Web browser is set up to connect via a proxy server, Web Control cannot be displayed. To use Web Control, you need to make network connection settings with a device other than a proxy server.

Entering the IP address of the projector

Web Control can be opened by specifying the IP address of the projector as follows when using Advanced Connection Mode.

Procedure



1 Start the Web browser on the computer.



Enter the IP address of the projector in the address input box of the Web browser, and press the [Enter] key on the computer's keyboard.

Web Control is displayed.

When Web Control Password is set in the Network menu from the projector's configuration menu, enter the User name and Password.

Projector Setup

You can set items that are usually set in the projector's configuration menu. The contents set are reflected in the configuration menu. There are also items that can only be set in the Web browser.

Items in the configuration menu that cannot be set by the web browser

All items in the configuration menu can be set with the exception of the following items.

- Settings Menu - Pointer Shape
- Settings Menu - Test Pattern
- Settings Menu - User Button
- Registering a User's Logo using Extended - User's Logo
- Extended Menu - Language
- Extended Menu - Operation - High Altitude Mode
- Extended Menu - Operation - Lens Cover Timer
- Reset Menu - Reset All, and Reset Lamp Hours

Items that can only be set in the Web browser

The following items can be set only in a Web browser.

- SNMP Community Name
- WEP Authentication Method (Open/Shared)

Using the Mail Notification Function to Report Problems

By setting the Mail Notification function from the projector's configuration menu, notification messages will be sent to the preset Email Addresses when a problem or warning occurs with a projector. This will enable the operator to be notified of problems with projectors even at locations away from the projectors. See your *User's Guide* for more information.



- *Up to a maximum of three notification destinations (Addresses) can be recorded, and notification messages can be sent to all three destinations at once.*
- *If a projector develops a critical problem and suddenly stops working, it may not be able to send a message notifying an operator of the problem.*
- *Monitoring is possible if **Communication On** is set from the **Extended** menu of the projector's configuration menu, even if the projector is in **Standby Mode** (when the power is off).*

Management Using SNMP

By setting SNMP from the projector's configuration menu, notification messages are sent to preset e-mail addresses when a problem or warning occurs with a projector. This is useful when controlling projectors collectively at a point distant from them. See your *User's Guide* for more information.



- *SNMP should be managed by a network administrator or someone who is familiar with the network.*
- *The SNMP function to monitor projectors requires SNMP Manager to be installed on the computer.*
- *The managing function using SNMP cannot be used via a Wireless LAN in Quick Connection Mode.*
- *Up to two destination IP addresses can be saved.*

Presentations Using Slideshow

This chapter explains how to project image files stored on USB devices directly from the projector as a Slideshow.

Files that can be Projected Using Slideshow

You can use Slideshow to directly project files stored in digital cameras and USB storage devices that are connected to the projector.



USB storage devices that incorporate security functions sometimes cannot be used.

Specifications for Files that can be Projected Using Slideshow

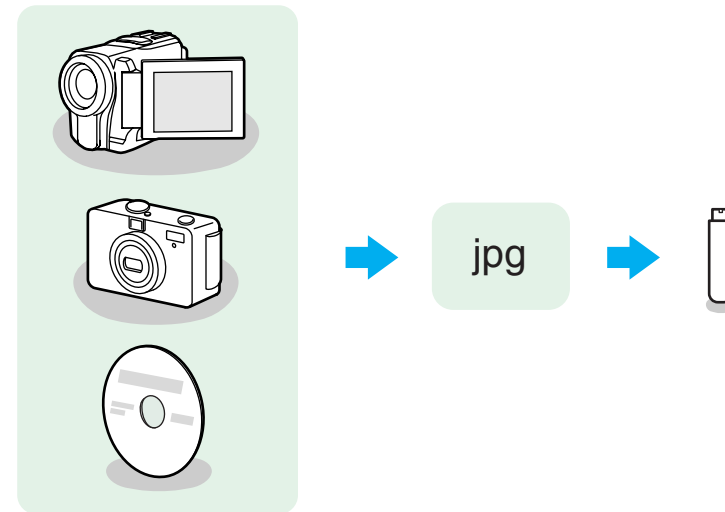
Type	File Type (Extension)	Notes
Image	.jpg	<p>The following cannot be projected.</p> <ul style="list-style-type: none">- CMYK color mode formats- Progressive formats- Images with a resolution greater than 4608x3072- Files with the extension ".jpeg" <p>Normally, the image may not be projected clearly if compression is set too high.</p>



- When using a USB hard disk, we recommend using an AC adapter power supply.
- The projector does not support media formatted on some file systems. If you have trouble with projecting, use media formatted under Windows.
- Format the media using the FAT16/32 file system.

Slideshow Examples

Projecting images from a USB storage device



Example 1: Prepare multiple images and project them continuously (Slide show) 🖱️ p.53

Example 2: Select image files one at a time and project 🖱️ p.52

Slideshow Basic Operations

Slideshow lets you play back and project image files stored on digital cameras and USB storage devices.

This section explains the basic operation of Slideshow.

Starting and Closing Slideshow

Starting Slideshow

Procedure

- 1 Press the [USB] button on the remote control or the [Source Search] button on the projector's control panel.
- 2 When a USB storage device is connected to the projector, Slideshow starts. See your User's Guide for more information on connecting a USB storage device.

Closing Slideshow

Procedure

To close Slideshow, turn off the USB storage device if necessary, then disconnect the device.

Slideshow Basic Operations

The following describes the procedures for playing images using Slideshow, and projection operations.

Procedure

- 1 Press the [◀], [▶], [⏮], or [⏭] buttons or the [△], [▽], [◀], or [▶] buttons on the Control panel to position the cursor on the file or folder you want to access.



1 Cursor

- JPEG files are displayed as thumbnails (file contents are displayed as small images).
- Some JPEG files may be displayed as icons instead of thumbnails. In this case, a file icon is displayed.





If all files and folders cannot be displayed at the same time in the current window, press the [▲] button on the remote control or move the cursor to the Next page button and press the [Enter] button.
To return to the previous screen, press the [▼] button, or position the cursor on the Previous page button and press the [Enter] button.

2

Press [Enter].

The selected image is displayed.
When a folder is selected, the files in the selected folder are displayed. Select **Back to Top** on the screen that opened and press the [Enter] button to return to the previous screen.

Rotating the Image

You can rotate JPEG images in 90° increments when playing them with Slideshow.

Procedure

1

Play images in JPEG format, or perform a Slideshow.

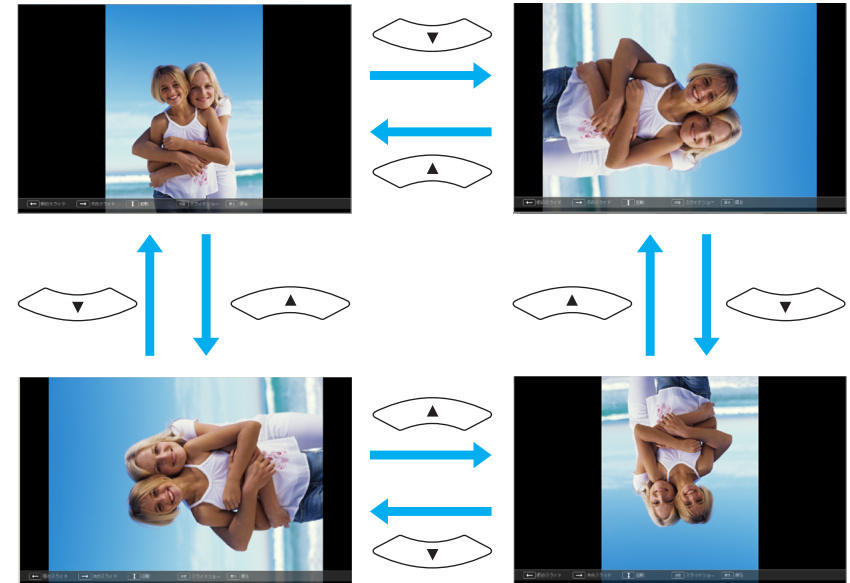
To play JPEG images p.52

To play Slideshows p.53

2

While projecting a JPEG image, press the [↶] button or the [↷] button.

You can also operate with the [↶][↷] buttons on the Control panel.



Projecting Image Files

Image files from a digital camera and image files stored on a USB storage device can be projected using Slideshow by either of the following two methods.

- Projecting selected image files
This is a function for projecting single files.
- Projecting all image files in a folder in sequence (Slideshow)
This is a function for projecting the file contents of a folder in order, one file at a time.

Attention

Do not disconnect the USB storage device while it is being accessed. Slideshow may not operate correctly.

You can perform the following operations on the remote control or the Control panel.

Projecting Images

Procedure

1 Start Slideshow. (p.50)

The content of the connected digital camera or USB storage device is displayed.

2

Press the [▲], [▼], [◀], or [▶] buttons or the [△], [▽], [◀], or [▶] buttons on the Control panel to position the cursor on the image file you want to project.

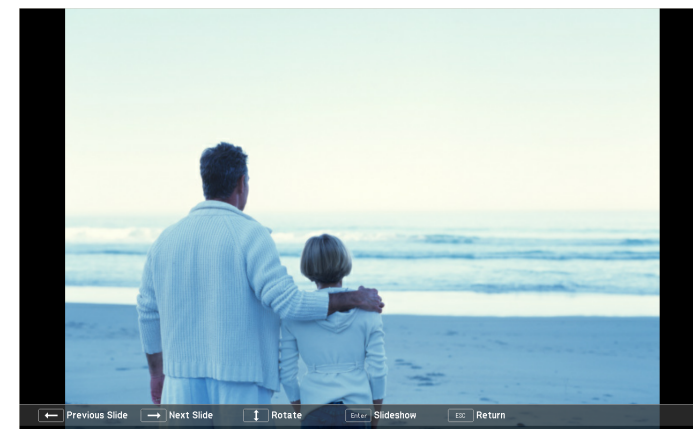


1 Image file

3

Press [Enter].

The image starts to play back.




4 The following operation returns you to the file list.

- While projecting still images: Press the [Esc] button.

Projecting all Image Files in a Folder in Sequence (Slideshow)

You can project the image files in a folder in sequence, one at a time. This function is called Slideshow. Perform the Slideshow by the following procedure.



To change the files automatically when you run Slideshow, set the Screen switching time in the Slideshow Option menu to anything other than No. Default setting: No  p.54

Procedure

1 Start Slideshow. p.50


The content of the connected digital camera or USB storage device is displayed.

2 Press the [, [, [, or [] buttons or the [↶], [↷], [↵], or [⏮] buttons on the Control panel to position the cursor over the folder for Slideshow, and then press the [Enter] button.

3

Select Slideshow from the file list screen, and then press the [Enter] button.

The Slideshow starts.

When the last file is projected, the file list is displayed again automatically. If you set **Continuous Play** to **On** in the Option window, projection will start from the beginning again when the end is reached.  p.54

You can proceed to the next screen, return to the previous screen, or stop playback during the projection of a Slideshow.



If the **Screen switching time** setting has been set to **No**, the files will not change automatically when you Play Slideshow. Press the [Enter] or [▼] button on the Remote Control to continue to the next file.

Setting Image Display Conditions

You can set the display condition for the Play Slideshow function.

Procedure

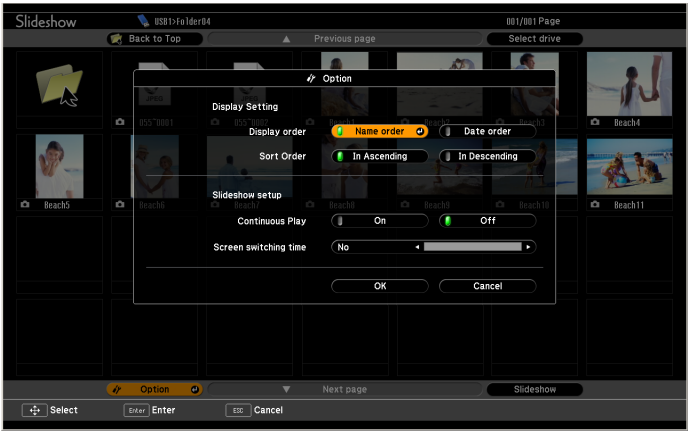
- 1

Press the [⏮], [⏪], [⏩], or [⏭] buttons or the [⏮], [⏪], [⏩], or [⏭] buttons on the Control panel to position the cursor over the folder where you want to set display conditions, then press the [Esc] button. Select "Option" from the menu displayed, then press the [Enter] button.
- 2

Set each of the items.

Enable settings by positioning the cursor on the target item and pressing the Enter button.

Details of the items are given below.



Display order	You can set the order of the files to be displayed. You can sort into file name order or date last accessed order.
---------------	--------------------------------------------------------------------------------------------------------------------

Continuous Play	You can determine whether to repeat the Slideshow.
Screen switching time	You can set the time for a single file to be displayed in Play Slideshow. You can set a time between No (0) and 60 Seconds. When you set No seconds, auto play is disabled.

- 3

Press the [⏮], [⏪], [⏩], or [⏭] buttons or the [⏮], [⏪], [⏩], or [⏭] buttons on the Control panel to position the cursor over OK and press the [Enter] button.

The settings are applied.

If you do not want to apply the settings, position the cursor on Cancel and press the [Enter] button.

Appendix

Connection Limitations

When projecting computer images while running EMP NS Connection, the following restrictions apply.

Supported Resolutions

The following computer screen resolutions can be projected. You cannot connect to a computer with a resolution greater than UXGA.

- VGA (640x480)
- SVGA (800x600)*
- XGA (1024x768)*
- SXGA (1280x960)
- SXGA (1280x1024)*
- SXGA+ (1400x1050)*
- WXGA (1280x768)
- WXGA (1280x800)
- WXGA+ (1440x900)
- UXGA (1600x1200)

* Supported resolutions when multi-screen display function is on.

If a computer with a special screen size is used where the ratio of height and width is not represented, a screen resolution closest to the width is selected from the list of 10 above.

In this case, in wide screen the horizontal margins are projected, in narrow screen the empty vertical margins are black.

Display Color

The number of colors for computer screens that can be projected.

Windows	Macintosh
16-bit color	About 32,000 colors (16-bit)
32-bit color	About 16.7 million colors (32-bit)

The operational guarantee for multi-screen display is 16-bit and 32-bit color.

Connection Number

You can connect up to four projectors to one computer and project simultaneously.

You cannot connect multiple computers to one projector simultaneously.

Others

- If the transmission speed of the Wireless LAN is low, the network might be cut off unexpectedly.
- Audio is not transmitted.
- When videos are played back, they do not play back as smoothly as when displayed on the computer.
- Applications that use part of DirectX functions may not be displayed correctly. (Windows only)
- Cannot project full screen MS-DOS prompts. (Windows only)

- There are times when the image on the computer screen and the image projected by the projector may not match exactly.

When Using Windows Vista

Note the following points when using EMP NS Connection with a computer running Windows Vista.

Limitations when projecting from Windows Photo Gallery

Note the following two limitations when launching Windows Photo Gallery when EMP NS Connection is running.

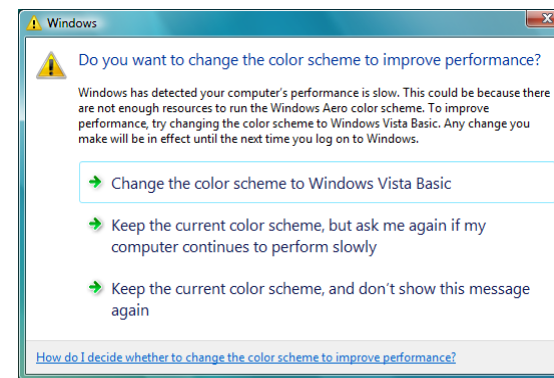
- Slide shows are played back in simple mode when projecting from Windows Photo Gallery.
Because the toolbar is not displayed, you cannot make changes while playing a Theme (effects), regardless of the Windows Experience Index rating.
Once simple mode has started, you cannot change modes while Windows Photo Gallery is running even if you close EMP NS Connection. Restart Windows Photo Gallery.
- You cannot play movies.

Limitations in Windows Aero

Note the following two limitations when the window design for your computer is Windows Aero.

- The layered window is projected regardless of the Transfer layered window setting in from Set options in EMP NS Connection.
For example, when the Transfer layered window for the EMP NS Connection toolbar is disabled, it should not be displayed on the computer screen, however the toolbar is projected.

- A few minutes after you connect a computer to the projector over a network with EMP NS Connection, the following message is displayed. It is recommended that you select **Keep the current color scheme, and don't show this message again**. This selection is enabled until the computer is restarted.



Troubleshooting

If any of the following problems occur, refer to the pages given for each problem.

Problems concerning network functions

"Cannot connect using EMP NS Connection" 🖱️ p.59

"When a connection is made using EMP NS Connection, the projected image remains as is, and a connection cannot be made from another computer." 🖱️ p.59

"The projector is not found when EMP NS Connection is started." 🖱️ p.60

"Cannot connect in Advanced Connection Mode or Wired LAN connection" 🖱️ p.61

"The Slide show cannot be displayed on the desired display when the multi-screen display function is being executed." 🖱️ p.61

"Applications are no longer displayed from the computer screen when the multi-screen display function is executed." 🖱️ p.62

"The mouse cursor is not displayed on the computer screen." 🖱️ p.62

"When connecting with EMP NS Connection the image is not displayed or the image is slow to appear." 🖱️ p.62

"When a connection is made using EMP NS Connection, a PowerPoint Slide show cannot be started." 🖱️ p.63

"When a connection has been made using EMP NS Connection, the screen will not be refreshed when using an Office application." 🖱️ p.63

"Error message when starting up EMP NS Connection" 🖱️ p.63

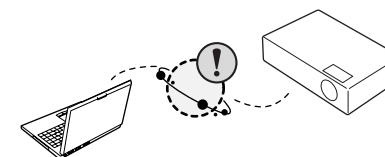
"Network settings are not restored after cutting the connection to the computer with EMP NS Connection." 🖱️ p.65

"Cannot project with Quick Wireless Connection (When using the optional Quick Wireless Connection USB Key)" 🖱️ p.65

"Problem with Quick Wireless Connection USB Key (When using the optional Quick Wireless Connection USB Key)" 🖱️ p.66

Problems concerning monitoring and control

"Mail is not sent even if a problem occurs in the projector." 🖱️ p.66



Problems concerning network functions

Cannot connect using EMP NS Connection


Check the message on the screen and then apply the following countermeasures.

Error Messages	Remedy
The application version used is not supported. Install the latest version of the application on your computer.	You are using an old version of EMP NS Connection. A connection cannot be made. Install the current version from the EPSON Projector Software for Meeting & Monitoring CD-ROM supplied with the projector.

When a connection is made using EMP NS Connection, the projected image remains as is, and a connection cannot be made from another computer.


Check	Remedy
Did the presenter leave the conference room without cutting off the network connection?	<p>With EMP NS Connection, the connection with the computer that was previously connected can be cut off when another computer tries to connect with the projector, and it connects with the computer that is trying to connect.</p> <p>Therefore, when a Projector keyword is not set for the projector, or if you know the Projector keyword, you can cut off the current connection and, if you perform a connection operation, you can connect to the projector.</p> <p>When a Projector keyword is set for the projector, if you do not know the Projector keyword, restart the projector and reconnect.</p>

The projector is not found when EMP NS Connection is started.

Check	Remedy
Is the Wireless LAN unit connected? For Wireless LAN	Check that the optional Wireless LAN unit is securely connected.
Is the projector's configuration menu open?	While the configuration menu is displayed, network connection becomes invalid. Close the configuration menu and return to the LAN standby screen.
Are the computer's LAN card and the built-in LAN function available?	Check that LAN is valid by checking Control Panel - System in the device manager and so on.
Is the SSID the same as that of the access point? Quick Connection Mode	Set an SSID that is different from that of the access point. See your <i>User's Guide</i> for more information.
Is the DHCP function for Wired LAN turned On? Quick Connection Mode	Turn Off the DHCP setting for Wired LAN from the configuration menu. See your <i>User's Guide</i> for more information.
Was the network adapter used selected correctly with EMP NS Connection?	If the computer has multiple LAN environments, it cannot connect unless the network adapter is selected correctly. When using a computer running Windows, start EMP NS Connection, and select the network adapter you are using from Set options - Switch LAN.  p.40
For Wireless LAN connection, is the Wireless LAN setting enabled when the computer is in power save mode?	Enable the Wireless LAN.
Are there any obstacles between the access point and the computer or projector? For Wireless LAN	Sometimes interference prevents the projector from being found in a search. Check for any obstacles between the access point and the computer or projector, and change their position to lessen potential interference.
Is the computer's Wireless LAN electromagnetic wave strength set to low?	Set the electromagnetic wave strength to maximum.
Does the Wireless LAN conform to 802.11g, 802.11b, or 802.11a?	The optional wireless LAN unit is only compatible with standards 802.11g, 802.11b, and 802.11a, and not with other standards such as 802.11.
Is the firewall turned off, or has the firewall been registered as an exception?	When you do not wish to turn off the firewall or register the firewall as an exception, make the necessary settings to open the ports. The ports used by EMP NS Connection are "3620", "3621", and "3629".

Check	Remedy
Is the network cable connected correctly? For Wired LAN	Check that the network cable is connected correctly. Reconnect it if it is not connected or not connected properly.

Cannot connect in Advanced Connection Mode or Wired LAN connection

Check	Remedy
Are the SSID settings for the computer, access point, and projector different?	Set the computer, the access point, and the projector to the same SSID. See your <i>User's Guide</i> for more information.
Are the WEP keys set properly?	When selecting WEP from Security , set the access point, the computer, and the projector to the same WEP key. See your <i>User's Guide</i> for more information.
Are the connection denial functions, such as MAC Address restrictions and port restrictions, set correctly at the access point?	Set the projector to allow connections from the access point.
Are the IP address, the Subnet Mask, and the Gateway Address for the access point and the projector set correctly?	When not using a DHCP, adjust each setting. See your <i>User's Guide</i> for more information.
Are the access point and the projector's subnet different?	Select Manual search from EMP NS Connection, specify the IP address, and connect.  p.34

The Slide show cannot be displayed on the desired display when the multi-screen display function is being executed.

Check	Remedy
Are you using PowerPoint 2002 or an earlier version? For Windows	To set and use two or more virtual displays, use PowerPoint 2003 or later, or limit the number of virtual displays to one before displaying the Slide show.

Applications are no longer displayed from the computer screen when the multi-screen display function is executed.

Check	Remedy
Is another application running on the virtual display? For Windows	When EPSON Virtual Display is installed, another application sometimes runs on the virtual display. In this case, set EPSON Virtual Display to "Off" at "Screen properties".

The mouse cursor is not displayed on the computer screen.

Check	Remedy
Is EPSON Virtual Display installed? For Windows	The mouse cursor was moved onto the virtual display. When the virtual display checkbox is cleared on the Add-Remove EPSON Virtual Display screen, the mouse pointer returns to the screen display area.

When connecting with EMP NS Connection the image is not displayed or the image is slow to appear.

Check	Remedy
Did you try to play back movies with Media Player or try to operate the screen saver preview?	Depending on the computer, the movie playback screen in Media Player may not be displayed, and the screen saver preview may not be displayed normally.
Is WEP encryption enabled, or are multiple projectors connected?	The display speed decreases when WEP encryption is effective or multiple projectors are connected.
Have you enabled DHCP?	When DHCP is set to On in Advanced Connection Mode or Wired LAN connection, if an available DHCP server is not found, it takes time to enter LAN standby status.
Is Wireless LAN 802.11g/b being used in Quick Connection Mode?	If there is interference, there are times when the image and sound for movies may stop. Try using Advanced Connection Mode or Wireless LAN 802.11a in Quick Connection Mode.

When a connection is made using EMP NS Connection, a PowerPoint Slide show cannot be started.



Check	Remedy
Was EMP NS Connection started while PowerPoint was starting? For Windows	When connecting with EMP NS Connection, make sure you close PowerPoint first. Slide show might not run if you start PowerPoint before EMP NS Connection.

When a connection has been made using EMP NS Connection, the screen will not be refreshed when using an Office application.

Check	Remedy
Is the mouse moved continuously?	When you stop moving the mouse cursor, the screen is updated. If the screen does not update quickly, stop moving the mouse cursor.

Error message when starting up EMP NS Connection

Error Messages	Remedy
Connection to the projector failed.	Try to connect again. If it still does not connect, check the network settings on the computer and the network settings for the projector. For details on the network settings to be made on the projector, see your <i>User's Guide</i> .
The keyword does not match. Re-enter the keyword displayed on the projector screen.	Check the Projector keyword displayed on the LAN standby screen, and enter the Projector keyword.

Error Messages	Remedy
The selected projector is busy. Do you want to continue the connection process?	<p>You tried to connect to a projector that is connected to another computer.</p> <p>When the Yes button is clicked, it connects to the projector. The connection between the projector and the other computer is cut off.</p> <p>When the No button is clicked, it does not connect to the projector.</p> <p>The connection between the projector and the other computer is maintained.</p>
EMP NS Connection initialization failed.	<p>Restart EMP NS Connection. If the message still appears, uninstall and then reinstall EMP NS Connection.</p> <p> p.8</p>
Connection failed due to keyword mismatch.	<p>When connecting to a projector for which a Projector keyword has been set, the wrong Projector keyword is entered.</p> <p>Check the Projector keyword that is displayed on the projector's connection standby screen. After the connection is cut off and then reconnected, enter the Projector keyword on the keyword entry screen that is displayed.</p> <p> p.14</p>
Network adapter information could not be obtained.	<p>Check the following point.</p> <p>Is a network adapter installed on the computer?</p> <p>Is the driver for the network adapter used installed on the computer?</p> <p>After checking, restart the computer and connect again.</p> <p>If you still cannot connect, check the following.</p> <p>Check the network settings on the computer and the network settings on the projector.</p> <p>For details on the network settings to be made on the projector, see your <i>User's Guide</i>.</p>
One or more connected projectors do not support resolutions greater than SXGA. Reduce the screen resolution and reconnect.	<p>There is an ELP-735 projector in the connection destination. Change the computer screen resolution to SXGA (1280x1024) or less.</p>
One or more projectors are not responding.	<p>You cannot connect to multiple projectors simultaneously. Check the network settings on the computer and the network settings on the projector.</p> <p>For details on the network settings to be made on the projector, see your <i>User's Guide</i>.</p>
Enter the keyword displayed on the projector screen.	<p>Check the Projector keyword displayed on the LAN standby screen, and enter the Projector keyword.</p>

Error Messages	Remedy
Cannot start this application while EPSON USB Display is running.	Close USB Display and then start EMP NS Connection.
Cannot start this application while Quick Wireless Connection is running.	Close Quick Wireless Connection and then start EMP NS Connection.
Cannot connect to the projector using this version of EMP NS Connection. Install the latest version of EMP NS Connection.	Install the latest version of EMP NS Connection.

Network settings are not restored after cutting the connection to the computer with EMP NS Connection.

Check	Remedy
Are you manually connecting to a Wireless LAN when the computer starts up? Quick Connection Mode	Try connecting to the Wireless LAN manually.

Cannot project with Quick Wireless Connection (When using the optional Quick Wireless Connection USB Key)

Check	Remedy
Is the Wireless LAN unit connected? For Wireless LAN	Check that the optional Wireless LAN unit is securely connected.
Is the projector turned on?	Turn on your projector.
Is the projector information stored in the USB Key?	First store the projector information in the USB Key, then connect the USB Key to your computer.
Is the USB Key connected to the computer?	Connect the USB Key to the computer. If the USB Key is already connected, disconnect once and then reconnect it. If projection fails even then, the information stored in the USB Key may have been erased. Contact Epson. See your <i>User's Guide</i> for more information.

Check	Remedy
Have you changed the projector settings after you stored the projector information in the USB Key?	Store the projector information again in the USB Key. Then connect the USB Key to the computer.

Problem with Quick Wireless Connection USB Key (When using the optional Quick Wireless Connection USB Key)

Check	Remedy
While projector information was being stored in the USB Key, was there any message, saving or finished, displayed on the screen?	If any message was not displayed, the stored information in the USB key may have been erased. Contact Epson. See your <i>User's Guide</i> for more information.

Problems concerning monitoring and control

Mail is not sent even if a problem occurs in the projector.

Check	Remedy
Is the Wireless LAN unit connected? For Wireless LAN	Check that the optional Wireless LAN unit is securely connected.
Is the network connect setting correct?	Check the projector's network settings. See your <i>User's Guide</i> for more information.
Is Standby Mode set to Communication On ?	To use the Mail Notification function when the projector is in standby, set Communication On in Standby Mode from the configuration menu. See your <i>User's Guide</i> for more information.
Did a fatal abnormality occur and the projector come to a sudden stop?	When the projector comes to a sudden stop, mail cannot be sent. If, after checking the projector, the abnormal state continues, contact Epson. See your <i>User's Guide</i> for more information.
Is power being supplied to the projector?	Check that your electrical outlet or power source is functioning correctly.

Check	Remedy
Is the network cable connected correctly? For Wired LAN	Check that the network cable is connected correctly. Reconnect it if it is not connected or not connected properly.

System Requirements

The software supplied with the projector or the optional accessories runs on computers that meet the following requirements.

	EMP NS Connection	EMP Monitor	USB Display
OS	Windows 2000 SP4/XP/XP SP1/XP SP2/XP SP3/Vista/Vista SP1 Mac OS X 10.3 or later Recommended: Mac OS X 10.5.1 or later, 10.4.11/10.3.9	Windows 98 SE SP1/Me/NT4.0 SP6/2000SP4/XP 32Bit (HomeEdition/Professional) SP1 or later Vista/VistaSP1*	Windows 2000 SP4/XP/XP SP1/XP SP2/XP SP3/Vista/Vista SP1
CPU	Mobile Pentium III1.2GHz or faster Power PC G3 900MHz or faster Recommended: Pentium M1.6GHz or faster CoreDuo 1.5GHz or faster	Recommended: Pentium MMX166MHz or faster Recommended: Pentium II233MHz or faster	Mobile Pentium III 1.2GHz or faster Recommended: Pentium M 1.6GHz or faster
Amount of Memory	256MB or more Recommended: 512MB or more	64MB or more	256MB or more Recommended: 512MB or more
Hard Disk Free space	20MB or more	50MB or more	20MB or more
Display	Resolution greater than XGA (1024x768) Display color of approx. 32000 colors more than 16 bit colors	Resolution greater than SVGA (800x600) Display color in 32 bit full-color or greater Display Color	Resolution greater than XGA (1024x768) Display color of approx. 32000 colors more than 16 bit colors

* Internet Explorer Ver.5 or later installed, and a user with Administrator authority

General Notes

Copyright Notice

All rights reserved. No part of this publication may be reproduced, stored in a retrieval system, or transmitted in any form or by any means, electronic, mechanical, photocopying, recording, or otherwise, without the prior written permission of Seiko Epson Corporation. No patent liability is assumed with respect to the use of the information contained herein. Neither is any liability assumed for damages resulting from the use of the information contained herein.

Neither Seiko Epson Corporation nor its affiliates shall be liable to the purchaser of this product or third parties for damages, losses, costs, or expenses incurred by the purchaser or third parties as a result of: accident, misuse, or abuse of this product or unauthorized modifications, repairs, or alterations to this product, or (excluding the U.S.) failure to strictly comply with Seiko Epson Corporation's operating and maintenance instructions.

Seiko Epson Corporation shall not be liable against any damages or problems arising from the use of any options or any consumable products other than those designated as Original Epson Products or Epson Approved Products by Seiko Epson Corporation.

The contents of this guide may be changed or updated without further notice.

Illustrations in this guide and the actual projector may differ.

Trademarks

Epson and EasyMP are registered trademarks and Epson Exceed Your Vision is a registered logomark of Seiko Epson Corporation.

PowerLite is a registered trademark of Epson America, Inc.

Windows Vista and the Windows logo are trademarks of the Microsoft group of companies.

IBM, DOS/V, and XGA are trademarks or registered trademarks of International Business Machines Corporation.

Macintosh, Mac, and iMac are trademarks of Apple Inc.

Windows, WindowsNT, Windows Vista, and PowerPoint are trademarks or registered trademarks of Microsoft Corporation in the United States.

WPA™ and WPA2™ are registered trademarks of Wi-Fi Alliance.

Pixelworks and DNX are trademarks of Pixelworks Inc.

Other product names used herein are also for identification purposes only and may be trademarks of their respective owners. Epson disclaims any and all rights in those marks.

Software Copyright:

This product uses free software as well as software to which this company holds the rights.

© 2009 Epson America, Inc.

CPD-27455