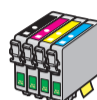
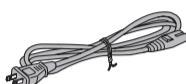
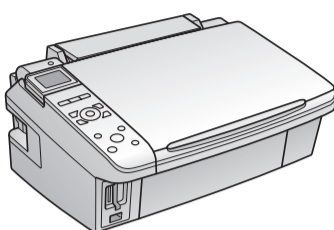


Epson Stylus® NX410 Series

Start Here

1 Unpack



(Included for Canada only)

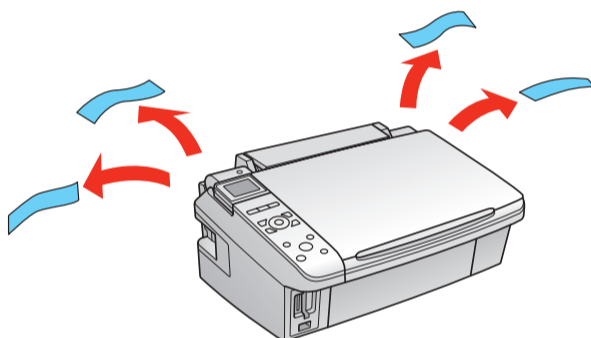
If anything is missing, contact Epson as described on the back.

Note: The model name of your product may vary slightly from the one shown above. The included CD and documentation apply to all products in the series.

Caution: Do not open ink cartridge packages until you are ready to install the ink. Cartridges are vacuum packed to maintain reliability.

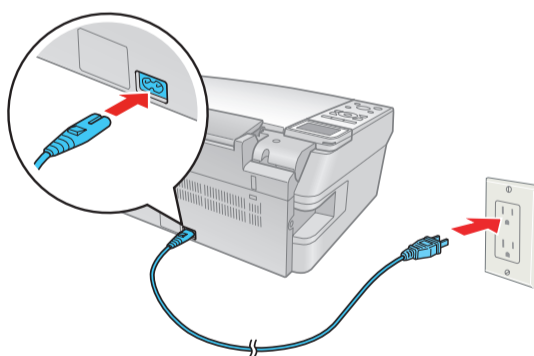
Canada only: For French speakers, remove stickers from the backing sheet and place over corresponding text on the control panel.

Remove all protective materials.



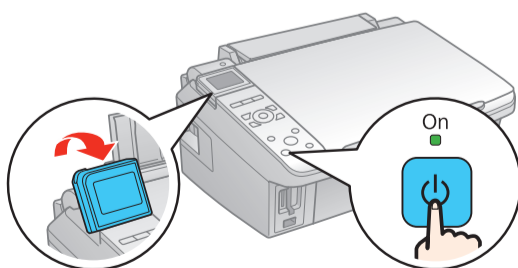
2 Turn on the printer

1 Connect the power cable.



Caution: Do not connect to your computer yet.

2 Press the  **On** button.



Note: You can raise the LCD display screen for better viewing, if necessary.

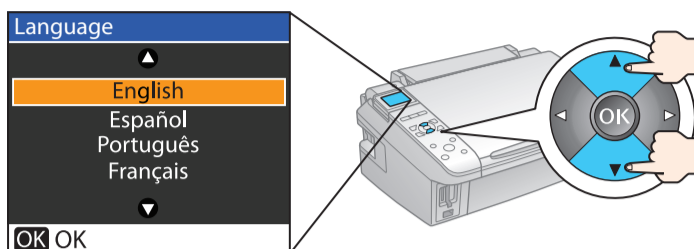


411615700

3

Select your language

Press ▲ or ▼ to select to select your language, then press **OK**.

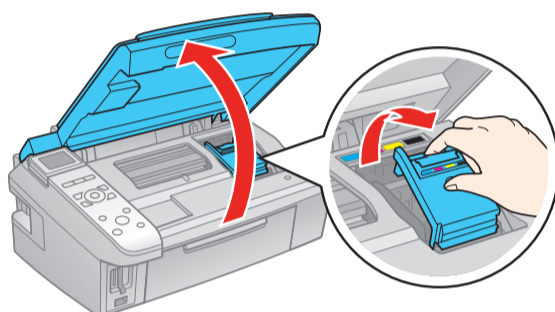


4

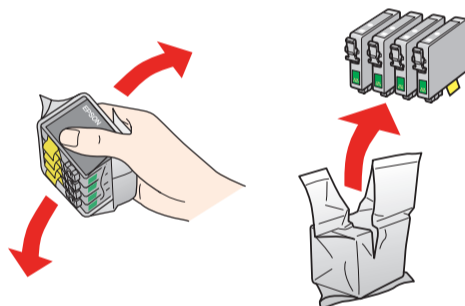
Install ink cartridges

Note: Do not load paper yet.

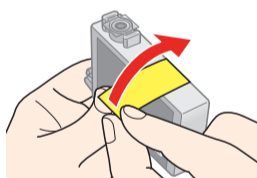
- 1 Lift up the scanner, then open the cartridge cover.



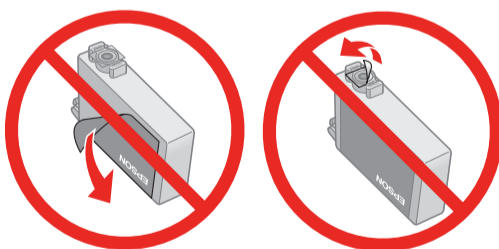
- 2 Shake the ink cartridges gently 4 or 5 times, then unpack them.



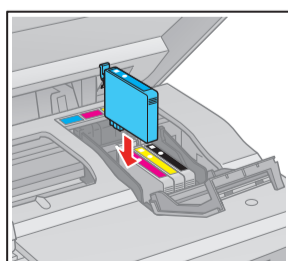
- 3 Remove only the yellow tape from each cartridge.



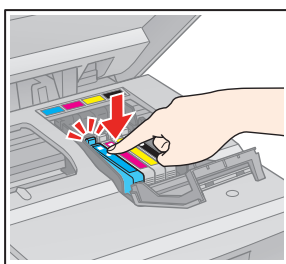
Caution: Do not remove any other seals or the cartridge may leak.



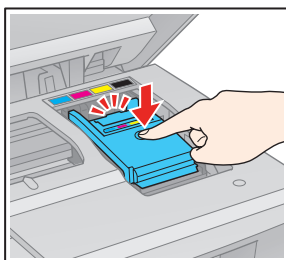
- 4 Insert the cartridges in the holder for each color.



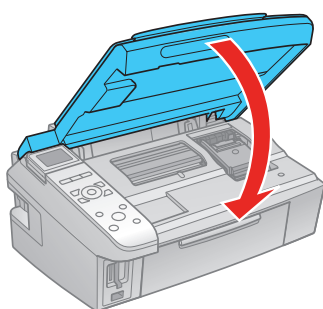
- 5** Press each cartridge down until it clicks.



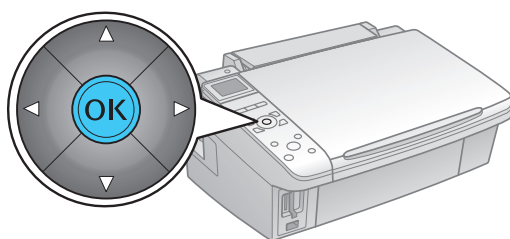
- 6** Close the cartridge cover. Press down until it clicks.



- 7** Lower the scanner.



- 8** Press the **OK** button to charge the ink. Charging takes about 2 minutes.

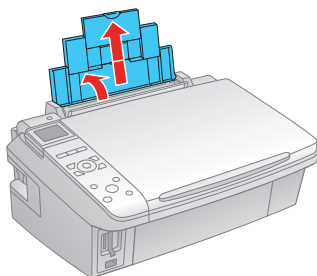


Note: Your printer ships with full cartridges and part of the ink from the first cartridges is used for priming the printer.

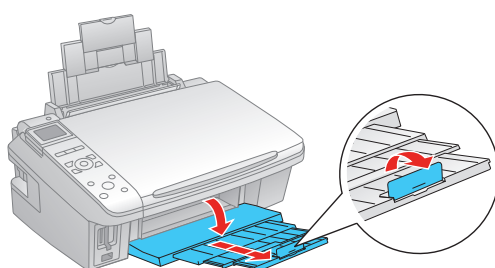
Caution: Don't turn off the printer while it is charging or you'll waste ink.

5 Load paper

- 1** Open the paper support and pull up the extensions.

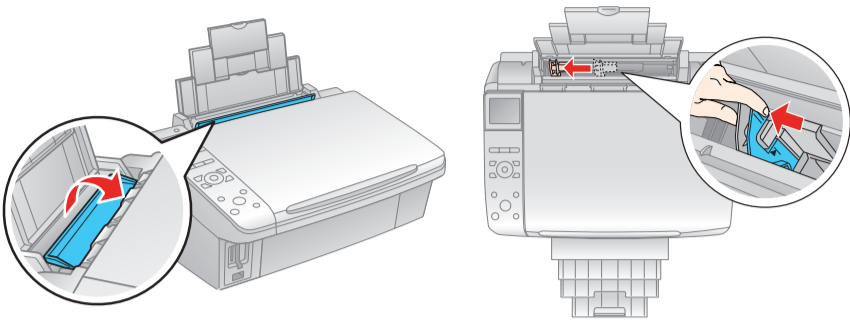


- 2** Open the output tray, pull out the extensions, and raise the stopper.

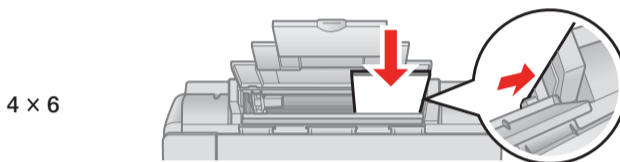
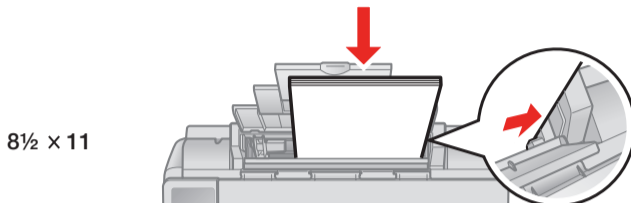


Note: Do not raise the stopper for legal-size paper.

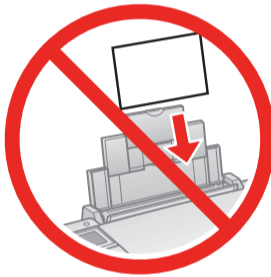
- 3** Flip the feeder guard forward, then squeeze the edge guide and slide it left.



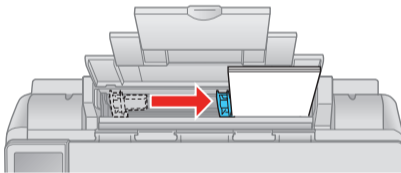
- 4** Load paper against the right edge and behind the tab, with the printable side face up.



Note: Don't load the paper sideways; always load it short edge first.



- 5** Slide the edge guide over.



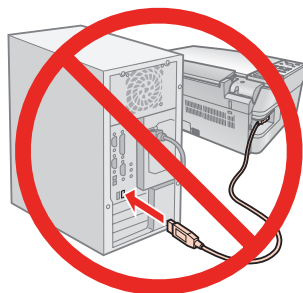
6

Install software

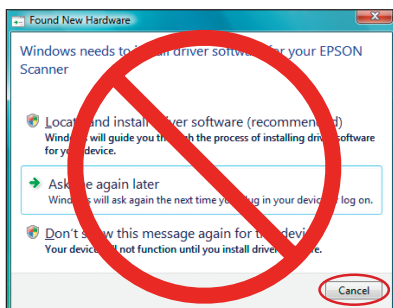
Your software works with Windows® 2000, XP, XP Professional x64 Edition, Windows Vista®, and Mac OS® X 10.3.9, 10.4.11, and 10.5.x.

Windows

- 1 Make sure the printer is **NOT CONNECTED** to your computer.

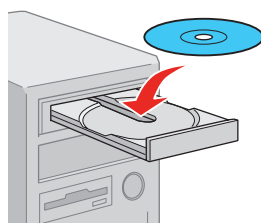


Note: If you see a Found New Hardware screen, click **Cancel** and disconnect the USB cable. You can't install your software that way.



- 2 Insert the Epson Stylus NX410 Series software CD.

With Windows Vista, if you see the AutoPlay window, click **Run SETUP.EXE**. When you see the User Account Control screen, click **Continue**.



- 3 Click **Install** and follow the on-screen instructions.

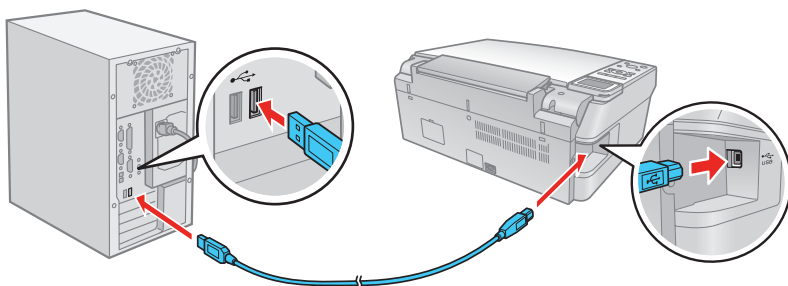


- 4 When you see this screen, click the first option and then click **Next**, *unless* the printer is connected to your computer through an external print server.

If you're using an external print server, click the second option, click **Next**, then skip to step 6.



- 5 When prompted, connect a USB cable. Use any open port on your computer.



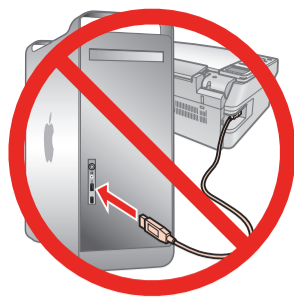
Note: If installation doesn't continue after a moment, make sure you securely connected and turned on the printer.

- 6 Follow the on-screen instructions to install the rest of the software and register your printer.
- 7 When you're done, remove the CD.

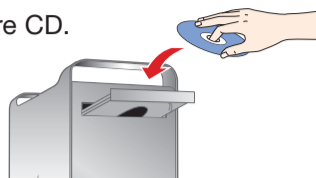
You're ready to print, copy, and scan! See the *Quick Guide* or your on-screen *Epson Information Center* for instructions.


Macintosh®

- 1** Make sure the printer is **NOT CONNECTED** to your computer.



- 2** Insert the Epson Stylus NX410 Series software CD.

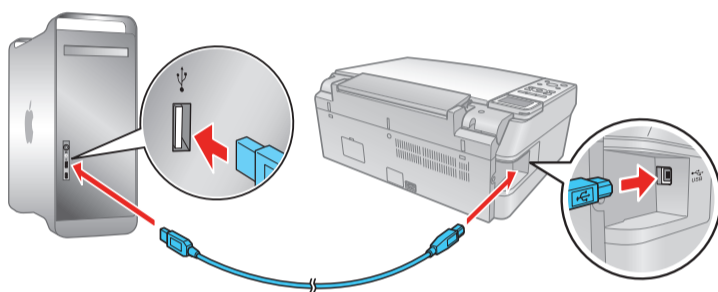


- 3** Double-click the  **Epson** icon.

- 4** Click **Install** and follow the on-screen instructions.



- 5** When prompted, connect a USB cable. Use any open USB port on your Macintosh. Make sure the printer is securely connected and turned on.



- 6** If you're using Mac OS X 10.5.x, skip to step 10.

If you're using Mac OS X 10.3.9 or 10.4.11, continue with the next step.

- 7** When you see this screen, click **Add Printer**.



- 8** Follow the steps on the right of the screen to add the printer.



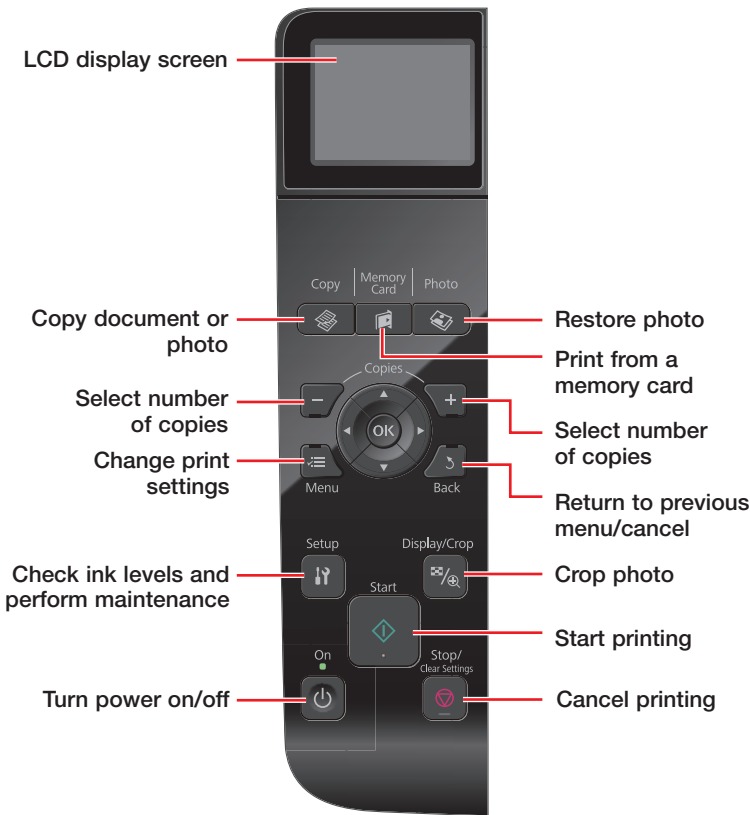
- 9** Click **Next** again, if necessary.

- 10** Follow the on-screen instructions to install the rest of the software and register your printer.

- 11** When you're done, eject the CD.

You're ready to print, copy, and scan! See the *Quick Guide* or your on-screen *Epson Information Center* for instructions.

Control panel



Any questions?

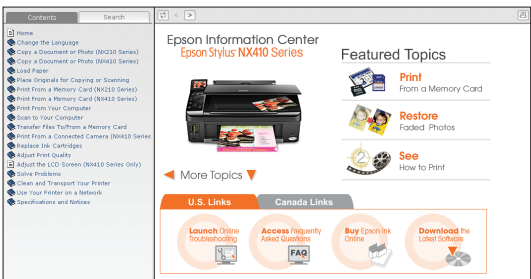
Quick Guide

Basic instructions for printing, copying, and scanning.



On-screen Epson Information Center

Click the desktop shortcut for easy access to your user's guide, FAQs, online troubleshooting advice, and software downloads. You can also purchase paper and ink.



On-screen help with your software

Select **Help** or **?** when you're using your software.

Epson Technical Support

Internet Support

Visit Epson's support website at epson.com/support and select your product for solutions to common problems. You can download drivers and documentation, get FAQs and troubleshooting advice, or e-mail Epson with your questions.

Speak to a Support Representative

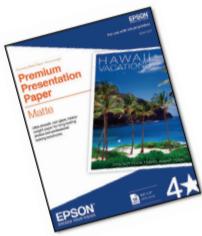
Call (562) 276-4382 (U.S.) or (905) 709-3839 (Canada), 6 AM to 6 PM, Pacific Time, Monday through Friday. Days and hours of support are subject to change without notice. Toll or long distance charges may apply.

Need paper and ink?

Try Epson paper with DURABrite® Ultra Ink for professional results. For the right supplies at the right time, you can purchase them at Epson Supplies CentralSM at www.epson.com/ink3 (U.S. sales) or www.epson.ca (Canadian sales). You can also purchase supplies from an Epson authorized reseller. To find the nearest one, call 800-GO-EPSON (800-463-7766).

Genuine Epson Paper

Epson offers a wide variety of papers to meet your needs; visit Epson Supplies Central for more information.



Premium Presentation Paper Matte

Ultra smooth, non-glare, heavy-weight paper for long-lasting photos and professional looking brochures.







Premium Photo Paper Glossy

High gloss, instant-drying paper for beautiful, durable photos made to share or display in an album.

Genuine Epson Inks



Look for the numbers below to find your cartridges. It's as easy as remembering your number!

Color	Moderate Use	Standard-capacity	High-capacity
 Black	88	69	68
 Cyan	88	69	—
 Magenta	88	69	—
 Yellow	88	69	—

Epson and Epson Stylus are registered trademarks, Epson Exceed Your Vision is a registered logomark, and Supplies Central is a service mark of Seiko Epson Corporation. DURABrite is a registered trademark of Epson America, Inc.


General Notice: Other product names used herein are for identification purposes only and may be trademarks of their respective owners. Epson disclaims any and all rights in those marks.

This information is subject to change without notice.





© 2009 Epson America, Inc. 2/09

CPD-27262

Cut out the card to the right and keep it with you when purchasing replacement ink cartridges.



Epson Stylus® NX410 Series Ink Cartridges

Color	Moderate Use	Standard-capacity	High-capacity
 Black	88	69	68
 Cyan	88	69	—
 Magenta	88	69	—
 Yellow	88	69	—