

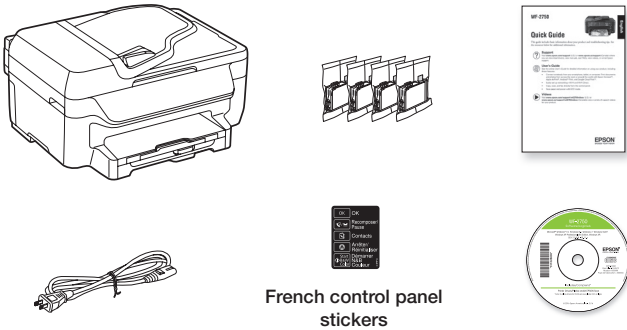
WF-2750/WF-2760 Start Here

Read these instructions before using your product.

The illustrations show the WF-2750, but the steps are the same for the WF-2760.

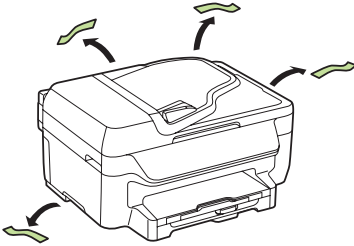
Note for Spanish speakers/Nota para hispanohablantes: Para obtener instrucciones de configuración en español, consulte la *Guía de instalación* en www.epson.com/support/wf2750sp o www.epson.com/support/wf2760sp (requiere una conexión a Internet).

1 Unpack

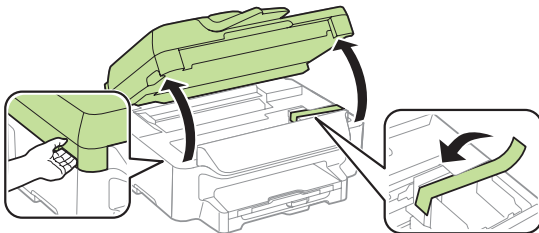


Note: Do not open the ink cartridge packages until you are ready to install the ink. Cartridges are vacuum packed to maintain reliability.

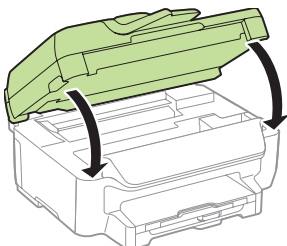
- 1 Remove all protective materials from the product.



- 2 Lift up the scanner unit and remove all protective materials from inside the product.

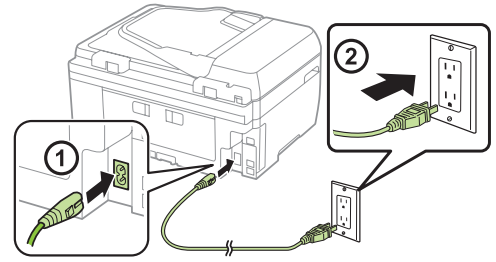


- 3 Lower the scanner unit.



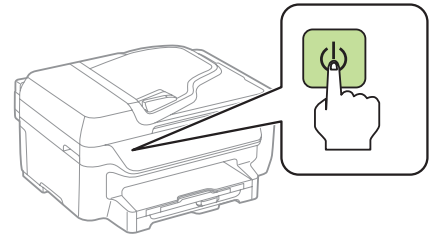
2 Turn on and configure

- 1 Connect the power cord to the back of the product and to an electrical outlet.



Caution: Do not connect to your computer yet.

- 2 Turn on the product.

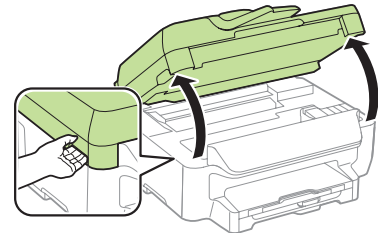


- 3 Select your language, country, date, and time.

Note: You can change these settings later using the product's control panel. For more information, see the online *User's Guide*.

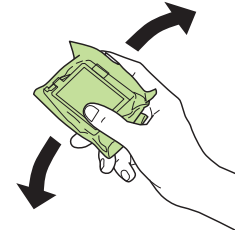
3 Install ink cartridges

- 1 Lift up the scanner unit.

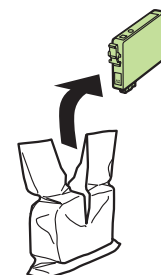


Caution: Do not touch the flat, white cable.

- 2 Gently shake the ink cartridges.



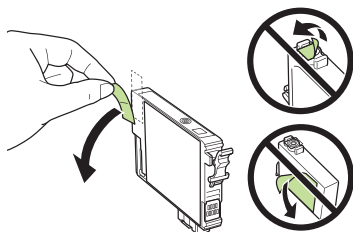
- 3 Unpack the ink cartridges.



413163100

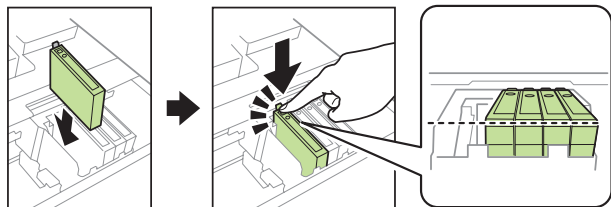
EPSON
EXCEED YOUR VISION

- 4 Remove only the yellow tape from each ink cartridge.

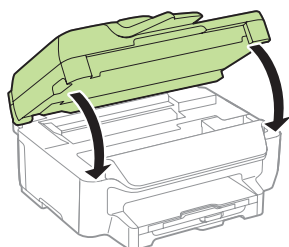


Caution: Do not remove any other labels or seals, or ink will leak. Do not touch the green chip on the cartridge.

- 5 Insert the cartridge in the holder for each color. Press each cartridge down until it clicks. Make sure all cartridges are pushed down into place.



- 6 Lower the scanner unit.



- 7 The printer starts charging the ink. Ink charging takes approximately 4 minutes. When you see a completion message on the printer's LCD screen, charging is complete.

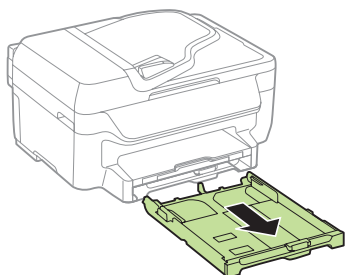
Caution: Don't turn off the printer or raise the scanner unit while the printer is charging or you'll waste ink.

Note:

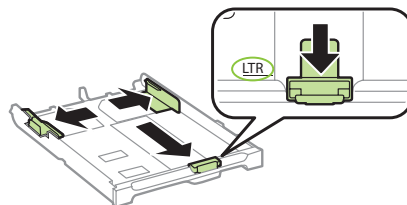
- The printer is designed for use with Epson® cartridges only, not third-party cartridges or ink.
- The cartridges included with the printer are designed for printer setup and not for resale. After some ink is used for charging, the rest is available for printing.

4 Load paper

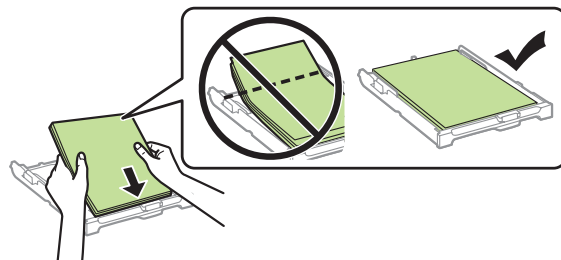
- 1 Make sure the product is done charging the ink, and then pull out the output tray and its extensions.



- 2 Slide the side edge guides all the way out and set the front edge guide to the paper size you are using.

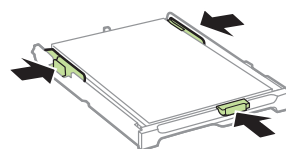


- 3 Insert paper with the glossy or printable side down.

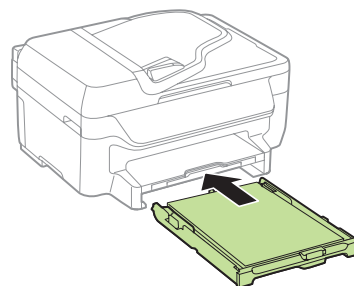


Note: Make sure the paper is loaded against the front edge guide and not sticking out from the end of the cassette.

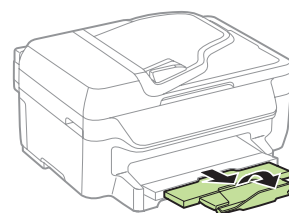
- 4 Slide the side edge guides against the paper, but not too tightly.



- 5 Keep the cassette flat as you insert it all the way.



- 6 Pull out the output tray and its extensions.

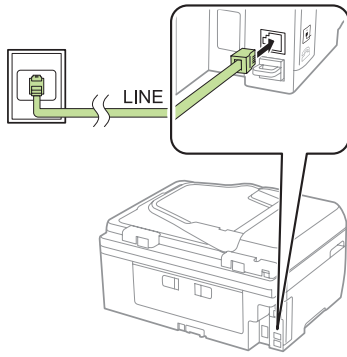


- 7 Select the paper settings on the product's control panel.

For more information on loading different paper types or envelopes, see the online *User's Guide*.

5 Connect the fax line

- 1 Connect a phone cord to a telephone wall jack and to the **LINE** port on your product. See the online *User's Guide* for more information.

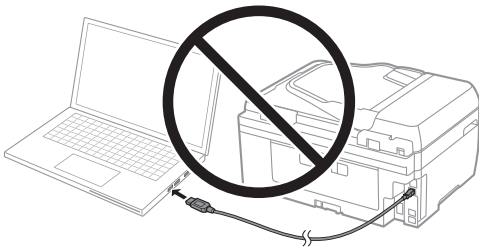


- 2 **WF-2750:** Press **▲** to set up the fax, or press **▼** to set it up later.
WF-2760: Press **Start** to set up the fax, or press **Close** to set it up later.

6 Install software

Note: If your computer does not have a CD/DVD drive or you are using a Mac, an Internet connection is required to obtain the product software. To print from a Chromebook™, go to www.epson.com/support/gcp (U.S.) or www.epson.ca/support/gcp (Canada) for instructions.

- 1 Make sure the product is **NOT CONNECTED** to your computer.



Windows®: If you see a Found New Hardware screen, click **Cancel** and disconnect the USB cable.

- 2 Insert the product CD or download and run your product's software package:

WF-2750:
www.epson.com/support/wf2750downloads (U.S.)
www.epson.ca/support/wf2750downloads (Canada)

WF-2760:
www.epson.com/support/wf2760downloads (U.S.)
www.epson.ca/support/wf2760downloads (Canada)

- 3 Follow the instructions on the screen to run the setup program.

OS X: Make sure you install Software Updater to receive firmware and software updates for your product.

- 4 When you see the Select Your Connection screen, select one of the following and follow the on-screen instructions:

- **Wireless connection**
In most cases, the software installer automatically attempts to set up your wireless connection. If setup is unsuccessful, you may need to enter your network name (SSID) and password.
- **Direct USB connection**
Make sure you have a USB cable (not included).
- **Wired network connection (WF-2760)**
Make sure you have an Ethernet cable (not included).

- 5 When software installation is complete, restart your computer.

Mobile printing

Connect wirelessly from your smartphone, tablet, or computer. Print documents and photos from across the room or around the world:


- Print directly from your iPhone, iPad, or iPod touch. Simply connect your printer and device to the same network and tap the action icon to print.
- Use Epson Print Enabler (free from Google Play™) with Android™ devices (v4.4 or later). Then connect your printer and device to the same network and tap the menu icon to print.
- Print remotely with Epson Connect™ and Google Cloud Print™. See your online *User's Guide* for instructions or learn more at www.epsonconnect.com.

Any problems?

Network setup was unsuccessful.

- Make sure you select the right network name (SSID).
- Restart your router (turn it off and then on), then try to connect to it again.
- The printer can only connect to a network that supports 2.4 GHz connections. If your router offers both 2.4 GHz and 5 GHz connections, make sure 2.4 GHz is enabled.
- If you see a firewall alert message, click **Unblock** or **Allow** to let setup continue.
- If your network has security enabled, make sure you enter your network password (WEP key or WPA passphrase) correctly. Be sure to enter your password in the correct case.

WF-2750: Press a button on the keypad repeatedly to scroll through characters (ABC, abc, or 123).

WF-2760: Press  to enter uppercase letters or press **123#** to enter numbers or symbols.

There are lines or incorrect colors in my printouts.

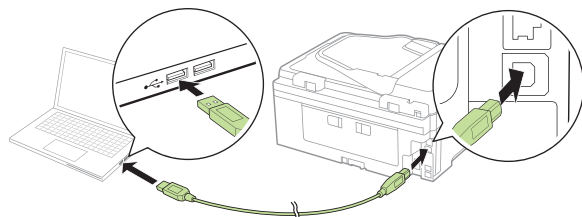
Run a nozzle check to see if any of the print head nozzles are clogged. Then clean the print head, if necessary. See the online *User's Guide* for more information.

The printer's screen is dark.

Make sure your product is turned on, and press any button to wake it from sleep mode.

Setup is unable to find my printer after connecting it with a USB cable.

Make sure your product is securely connected as shown:



Any questions?

Quick Guide

Basic information and troubleshooting.

User's Guide

Windows: Click the icon on your desktop or Apps screen to access the online *User's Guide*.

OS X: Click the icon in **Applications/Epson Software/Guide** to access the online *User's Guide*.

If you don't have a User's Guide icon, go to the Epson website, as described below.

Technical support

www.epson.com/support (U.S.) or www.epson.ca/support (Canada)

(562) 276-4382 (U.S.) or (905) 709-3839 (Canada), 6 AM to 8 PM, Pacific Time, Monday through Friday, and 7 AM to 4 PM, Pacific Time, Saturday. Days and hours of support are subject to change without notice. Toll or long distance charges may apply.

Recycling

Epson offers a recycling program for end of life hardware and ink cartridges. Please go to www.epson.com/recycle for information on how to return your products for proper disposal.

Need paper and ink?

Try Epson specialty papers with DURABrite® Ultra Ink for professional results. You can purchase them at www.epson.com/ink3 (U.S. sales) or www.epson.ca (Canadian sales). You can also purchase supplies from an Epson authorized reseller. Call 800-GO-EPSON (800-463-7766).



DESIGNED for EXCELLENCE™
Epson printers, ink and specialty papers.



DURABrite Ultra INK

WF-2750/WF-2760 replacement ink cartridges

Color	Standard-capacity	High-capacity
Black	220	220XL
Cyan	220	220XL
Magenta	220	220XL
Yellow	220	220XL



EPSON and DURABrite are registered trademarks, Epson Connect is a trademark, and EPSON Exceed Your Vision is a registered logomark of Seiko Epson Corporation. Designed for Excellence is a trademark of Epson America, Inc.

Mac, OS X, iPhone, iPad, and iPod touch are trademarks of Apple Inc., registered in the U.S. and other countries.

Android, Google Cloud Print, Chromebook, and Google Play are trademarks of Google Inc.

General Notice: Other product names used herein are for identification purposes only and may be trademarks of their respective owners. Epson disclaims any and all rights in those marks.

This information is subject to change without notice.