

EPSON PRODUCT SUPPORT BULLETIN

Date: 4/17/2002

PSB #: PSB.2002.04.006

Reference: N/A

Product(s): PhotoPC 3100Z

Subject: Panorama Stitcher Light EP and QuickTime 5

Originator: TC

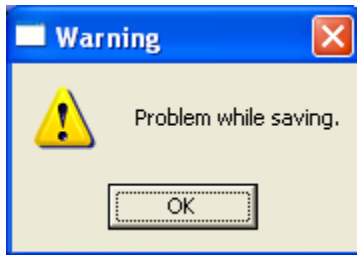
Authorization: *[Signature]*

Total Pages: 2

This bulletin was created to inform you of an issue that can occur when using Panorama Stitcher Light EP (included on the camera software installation CD) and QuickTime 5.

Description:

This issue occurs when using QuickTime 5, or later, with the Panorama Stitcher program on Windows 98, Me, 2000 and XP. You will see the issue if you create a panorama and click on the "Save" icon to save the file as a ".mov" QuickTime movie file. The progress meter goes from 0 to 100% and the file looks like it is going to be saved, but then you see the following warning message:



Note: If QT is not installed you get the following error and the file is still not saved:

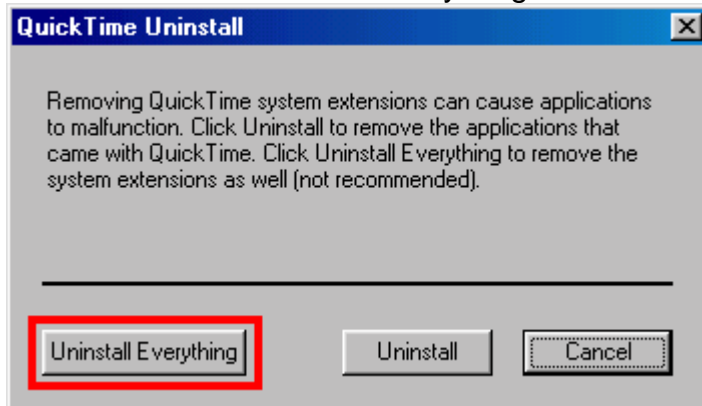


Reason:

Panorama Stitcher only supports QuickTime 4. This is the version that is included on the camera installation CD. To correct the issue, install QuickTime 4 located in the IExpert directory of the PhotoPC 3100Z CD (CPD-12425).

Note: Before installing QuickTime 4, you must completely un-install QT 5.x.

1. Click on the "Start" button go to Settings>Control Panel and click on the Add/Remove Programs icon.
2. Click the "Uninstall Everything" button to completely remove QT 5 (see red box below).



3. After removing QT 5, insert the PhotoPC 3100Z CD (CPD-12425) in your CD-ROM drive and explore the CD.
4. Open the IExpert directory, then open the QuickTime folder and double-click the "Quick TimeInstaller.exe" - to run the Quick Time Installer.
5. You will now be able to save .mov files.

EPSON PRODUCT SUPPORT BULLETIN

Date:	4/8/2002	Originator:	TC
PSB #:	PSB.2002.04.003	Authorization:	Kps
Reference:	N/A	Total Pages:	3
Product(s):	Epson PhotoPC 3100Z Digital Camera		
Subject:	Importing Images on a Mac/PC Using Image Expert 1.9.0		

This bulletin was created to inform you of an issue that occurs when using the Epson PhotoPC 3100Z Digital Camera and Image Expert version 1.9.0 (included on the Installation CD) to download images from the camera's compact flash card. The issue occurs on Windows 98/2000/Me/XP or Macintosh OS 8.5.1 to 9.2.2.

Note:

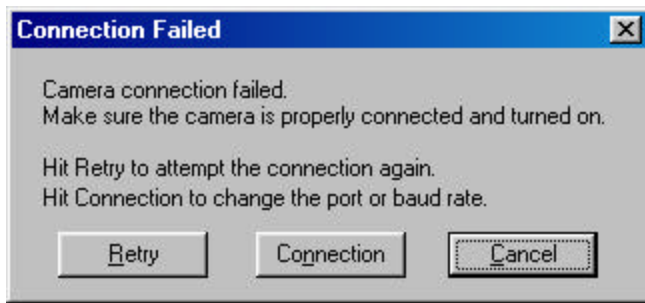
If you have the Epson PhotoPC 3100Z Digital Camera and are running Windows 98 or Macintosh OS 8.5.1 - 8.6, you need to install the USB storage device driver from the software CD (CPD-12425) that came with the camera. For Windows 2000/Me/XP or Macintosh OS 9.0 to 9.2.2, use the USB storage device driver built into the operating system.

Issue:

After installing Image Expert and launching it for the first time, you will see a "Quick Tour" window. Close the Quick tour window, and the "Startup" window opens with a "Tip of the Day" box, and 3 choices for importing your images into Image Expert. The 3 choices are: "View Pictures from an Existing Album," "View Pictures in Camera" or "View Pictures in PC Card Slot." On page 10-3 of the PhotoPC 3100Z User's Guide (CPD-12422), the recommended choice is to select "View Pictures in the Camera" for Windows and "View Pictures in PC Card Slot" for Macintosh. Refer to the following screenshot:



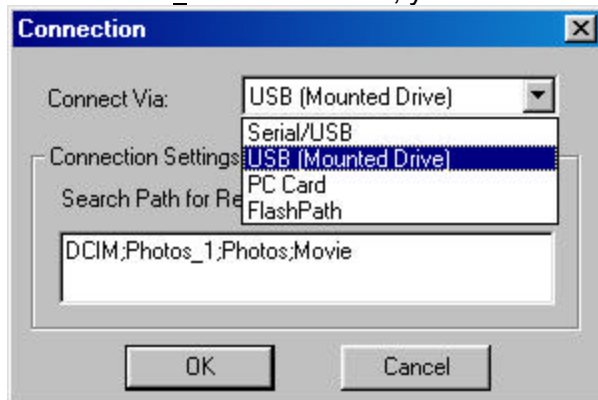
If you click "View Pictures in the Camera" (see red arrow above) it causes Image Expert to display the following "Camera connection failed" error message:



Reason:

The PhotoPC 3100Z and the Compact Flash card installed inside the camera are recognized by the operating system and Image Expert 1.9.0 as a Compact Flash Card Reader and "USB (Mounted Drive)." **The Correct choice in the "Startup" window is "View Pictures in PC Card Slot" for both Windows and Macintosh. This selection uses "USB (Mounted Drive)" as its default connection type.**

If you have selected "View Pictures in the Camera" for either Windows or MAC, this option forces a Serial/USB connection. Since this selection does not look for a "USB (Mounted Drive)" like the Photo PC 3100Z, you get the "Camera connection failed" error message. At this point you should click the "Connection" button, you will then see the following Connection window:



In the "Connect Via:" Drop down menu, select "USB (Mounted Drive)" and click "OK." You will then be able to access your images in the Photo PC 3100Z Digital Camera.

The "View Pictures in the Camera" option is included to provide support for Epson Digital Cameras that use a TWAIN compliant driver.

If you un-check the box for "Show at Startup" you can turn off the "Quick Tour" and "Startup" windows. They can also be turned off from the "Preferences" window. See the Image Expert "Help" menu for information on changing Preferences.

Note: In Image Expert version 1.9.0 "Camera Controls" is not supported by the PhotoPC 3100Z because it is not a TWAIN compliant camera.

If you have selected the "View Pictures in Camera" option, the connection type default changes to

Serial/USB. Image Expert always remembers the last connection type selected, so the user must open the "Camera" pull down menu, click on "Connection" and change the setting back to "USB (Mounted Drive)" for both MAC and PC.

EPSON PRODUCT SUPPORT BULLETIN

Date:	3/27/2002	Originator:	TC
PSB #:	PSB.2002.03.005	Authorization:	Kps
Reference:	TE01-141 Rev. A	Total Pages:	1
Product(s):	Photo PC-3100Z		
Subject:	Release of Updated EPSON File Converter Utility Version 1.12 for Macintosh.		

This bulletin provides information on the updated EPSON File Converter Utility Version 1.12 for Macintosh computers. It replaces File Converter Utility v.1.1 (original release).

Problem description:

When an image is converted to the DCF file format using Epson's File Converter Utility v.1.1, the compressed file will lock up the host computer when it is attached to an e-mail.

Resolution:

Version 1.12 has been released to countermeasure this issue. You can download the Macintosh Version 1.12 from the EPSON Support Web site at <http://support.epson.com> There is no need to remove the original EPSON File Converter Utility Version 1.1. The Updated EPSON File Converter Utility (Version 1.12) will overwrite the original File Converter Utility and restore the sample files.

The original EPSON File Converter Utility Version 1.1 is dated March 23, 2001.

EPSON File Converter	Today, 9:13 AM	— folder
EPSON File Converter	Fri, Mar 23, 2001, 5:31 PM	845 K application
SAMPLE1.JPG	Fri, Dec 3, 1999, 9:28 PM	163 K document
SAMPLE2.JPG	Fri, Dec 3, 1999, 9:28 PM	163 K document
SAMPLE3.JPG	Fri, Dec 3, 1999, 9:28 PM	163 K document
SAMPLE4.JPG	Fri, Dec 3, 1999, 9:28 PM	163 K document

After The Update, the EPSON File Converter Utility will be dated July 9, 2001.

EPSON File Converter	Today, 9:38 AM	— folder
EPSON File Converter	Mon, Jul 9, 2001, 7:20 PM	845 K application
SAMPLE1.JPG	Fri, Dec 3, 1999, 9:28 PM	163 K document
SAMPLE2.JPG	Fri, Dec 3, 1999, 9:28 PM	163 K document
SAMPLE3.JPG	Fri, Dec 3, 1999, 9:28 PM	163 K document
SAMPLE4.JPG	Fri, Dec 3, 1999, 9:28 PM	163 K document

EPSON PRODUCT SUPPORT BULLETIN

Date: 8/07/2001

PSB No.: 2001.08.004

Reference: N/A

Originator: JD & RS

Authorization: *JA*

Affected Product(s): Photo PC 3000 & 3100Z

Subject: Addressing Issues with Blurry and Out-Of-Focus Images

This bulletin provides information concerning blurry or out-of-focus images that end users may experience when using the Photo PC 3000 or 3100Z camera. Several factors can contribute to blurry or out-of-focus images. The next section provides a list of possible causes and remedies.

Causes/Remedies:

1. Make sure your subject is centered in the viewfinder or LCD screen, then press the shutter button halfway down. The camera will then auto focus the subject. If you're using the viewfinder wait until the photo-capture light turns green. If you're using the LCD screen you'll see a green circle. Then fully depress the shutter button while holding the camera perfectly still. This should ensure a good exposure.
2. As lighting conditions change so do exposure settings; this can contribute to blurry images. For example, dim lighting requires longer exposure times, so the slightest movement of the camera will generate blurry images. The more the camera is moved during exposure the more blurry your image will look. For lighting conditions that require longer exposure times try placing the camera on a stable surface or a tripod. Avoid holding the camera, if possible.
3. The built-in flash has a range of approximately 14 feet. If lighting conditions are poor you may need a better flash range. Consider using an external flash. The camera is equipped with a Hot-Shoe adapter for this purpose. If you are using a tripod, try using the 10-second delay feature to avoid movement when pressing the shutter button. Refer to the user's guide for more information on using the built-in flash and the shutter delay feature.
4. If you get blurry images turn the camera OFF then back ON again. This will reset the camera's focus mechanism.
5. When the camera is using batteries it automatically shuts off or goes to sleep after 30 seconds (default). If the lens is accidentally repositioned (pushed in or bumped) when the camera is in sleep mode, the focus settings stored in the camera's firmware are no longer accurate. When you start taking pictures again the images will be blurry since the camera is not aware that the lens has changed position. You must turn the camera OFF and back ON. This will re-calibrate the camera's focusing mechanism. As a precaution, **avoid contact with any hard surface while the lens is extended.**
6. If the battery power is depleted while the lens is extended and you cannot get the camera to automatically retract the lens, then you must either connect a power adapter, if possible, or install a fresh set of batteries. Then turn the camera ON and then OFF to retract the lens. **DO NOT** attempt to manually push or force the lens back into the camera. This will damage the lens mechanism.

EPSON PRODUCT SUPPORT BULLETIN

Date: 9/07/2001

PSB No.: 2001.08.002

Reference: TE01-045 Rev. B

Originator: TC & JD

Authorization: *JH*

Affected Product(s): EPSON Imaging Products (Scanners, Digital Cameras, and Stylus Scan Devices)

Subject: Compatibility Chart for Macintosh OS X Classic

This bulletin provides information on compatibility for EPSON Scanners, Digital Cameras, and Stylus Scan Series devices running in Macintosh OS X Classic mode. Mac OS X provides the Classic environment mode for Mac OS 9 compatible applications and device drivers. Classic mode will require Mac OS 9.1 system software. To setup Classic mode follow the steps below:

1. First install or upgrade your Macintosh system to OS 9.1 before installing OS X (for details refer to Apple's OS X documentation).
2. To start in Classic mode, click the **Classic** icon in System Preferences. To find *System Preferences* go to the **Apple Menu** or click on the icon in the **Dock** bar on the desktop. Classic mode can also be set up to start automatically during the log in process. (Refer to your Apple documentation for installation and operation of Macintosh OS X Classic and 9.1).
3. To run a Classic application, just double-click on it or a document created with the application.

A) The following Epson models are supported in OS X Classic mode via USB.

Model	Driver Version	Connector Type
Perfection 610	TWAIN L 1.00E	USB
Perfection 636U	TWAIN 3.20A	USB
Perfection 640U	TWAIN L 2.01A	USB
Perfection 1200U	TWAIN 4.01A	USB
Perfection 1240U	TWAIN 5.00A	USB
Perfection 1640SU	TWAIN 5.00A	USB
Expression 1600	TWAIN Pro/Pro Network 2.00A *	USB
Expression 1640XL	TWAIN Pro/Pro Network 2.00A *	USB
Expression 1680	TWAIN Pro/Pro Network 2.00A *	USB
Stylus Scan 2000	TWAIN (v.1.10A); Printer (v.6.25E) **	USB
Stylus Scan 2500	TWAIN (v.1.10A); Printer (v.6.25E) **	USB
Photo PC 800/850Z/3000Z	EPSON Photo!3 (v.1.40E) ***	USB
Photo PC 3100Z	USB Storage Device ****	USB

Note: MAC OS X Classic mode supports USB-native and network-capable devices. Classic mode does not support MAC Serial, SCSI or FireWire connected devices.

* Expression Series Scanner Notes:

1. When installing the TWAIN driver and you are prompted to restart your computer, click Quit instead.
2. Click Stop to close the Classic environment. Close the System Preferences folder. Then restart the computer.
3. If you install PageManager v 2.40.05 for the Expression series scanners and the Start button does not work, restart the computer.

**** Stylus Scan Notes:**

1. You must install the Stylus Scan drivers in a true 9.1 environment. Do not install in OS X Classic, the installation will hang. From the Printing and Scanning Software CD, open the Epson Stylus Scan 2xxx folder and click on the icon to install the drivers. When prompted, restart the computer. Make sure the startup disk is set to OS X before restarting. Start Classic and install Smart Panel.
2. You must install Smart Panel from its own folder. From the Software CD open the Smart Panel folder. Click on the Epson Smart Panel Installer icon to install. Before you can launch Smart Panel you must install the Stylus Scan Updater. The file can be downloaded from the Epson web site.

***** Digital Camera Notes:**

1. EPSON Photo! 3 must be installed in a true Mac OS 9.1 environment. It cannot be installed in Mac OS X Classic mode. After installation, restart the computer in OS X, start Classic, then launch Photo! 3.
2. Use the EPSON *Camera Monitor Setup* dialog box in *Apple Menu Items* to assign an application before using the programmable *Push (Shutter) Button Function*.
3. You can use the *Push Button Function* in Classic mode.

******Photo PC 3100Z Notes:**

1. This camera is supported by Mac OS X native mode using the embedded Image Capture application.

B) The following models are not supported in OS X Classic when using the connector type(s) described in the chart below.

Model	Connector Type
Perfection 636	SCSI
Perfection 1200	SCSI
Expression 636	SCSI
Expression 800	SCSI
Expression 1600	SCSI/FireWire
Expression 1640XL	SCSI/FireWire
Expression 1680	SCSI/FireWire
Expression 836XL	SCSI
GT-10000 (PC platform only)	SCSI
GT-10000+ (PC platform only)	SCSI
GT-30000 (PC platform only)	SCSI/FireWire
Photo PC 500	Serial
Photo PC 600	Serial
Photo PC 650	Serial
Photo PC 700	Serial
Photo PC 750Z	Serial