

EPSON PRODUCT SUPPORT BULLETIN

Date: 06/10/2009
TIB #: PSB.2009.06.002
Reference: TI 09-08j Rev. A
Product(s): PowerLite 735c / 737c / 745c / 755c / 765c / 835p / 1705/1715/1815/1825/7850p / 8300 with EasyMP.net option, Pro G5150/G5350 / 1725 / 1735W / 85 / 825 / 826W
Subject: Release of EMP NS Connection for Windows & Mac Upgrade from v2.50 to v2.51

Originator: DS
Authorization: *Kps*
Total Pages: 8

This bulletin was created to inform you of the release of the new version 2.51 of the EMP NS Connection software.

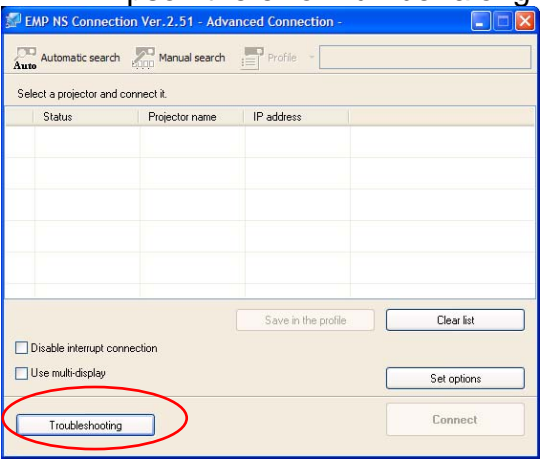
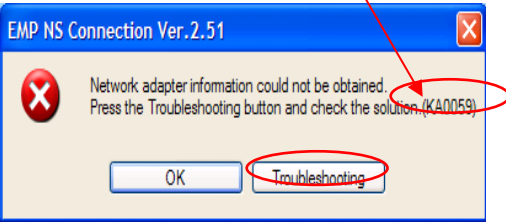
Description of Change:

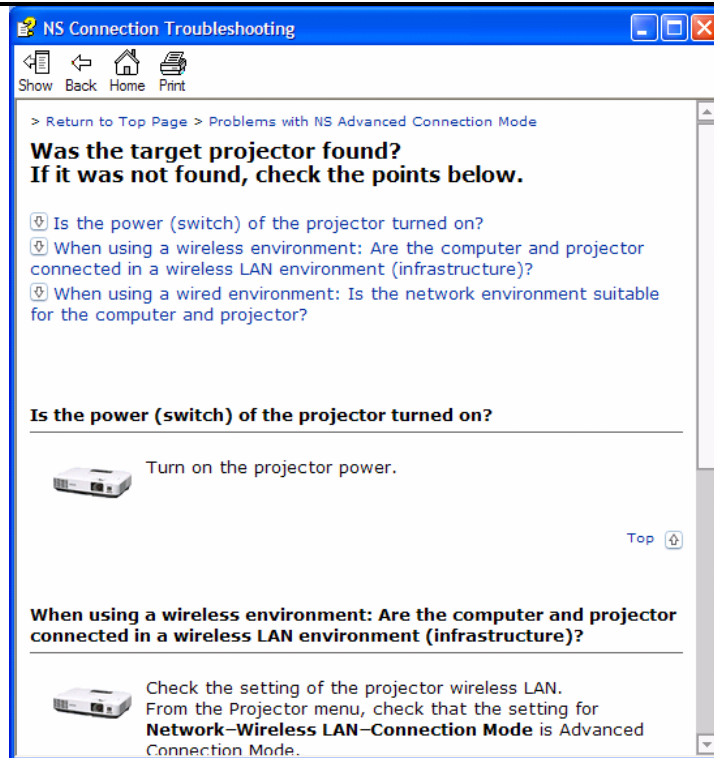
Improvements have been made to the EMP NS Connection utility.

Reason:

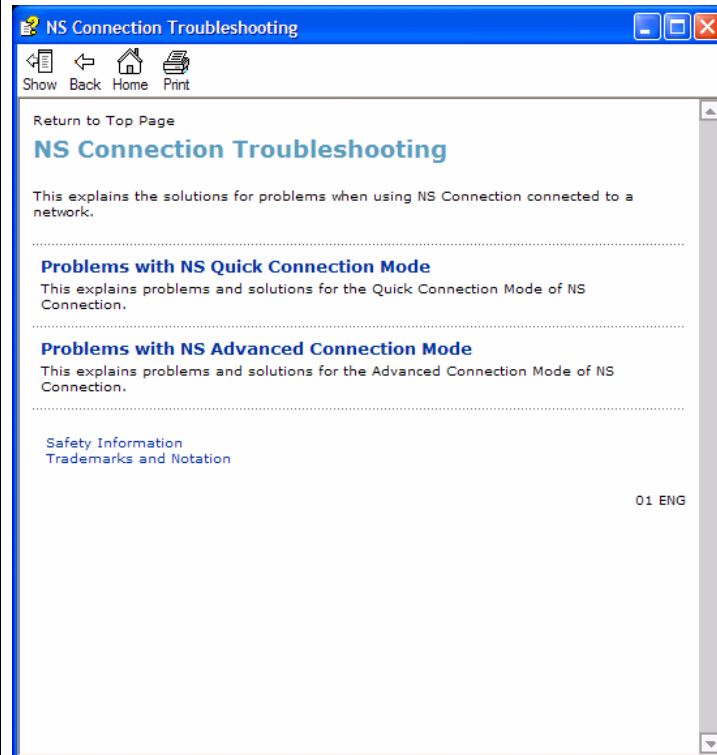
The improvements to NS Connection V2.51 are as follows

Improvements (V2.50 (V2.51

Improvements	<ul style="list-style-type: none">■ Addition of 10 new languages: Arabic, Ukrainian, Romanian, Indonesian, Croat, Slovak, Bulgarian, Malay, Vietnamese and Hebrew.■ Addition of troubleshooting function (Windows Only) When pressing the troubleshooting button, the corresponding troubleshooting and error number is displayed in the error message window.<ul style="list-style-type: none">• When experiencing problems with NS Connect, please report to Epson the error number along with the failure information.  
--------------	--



Also you can access troubleshooting by clicking **Start → All programs → EPSON Projector→EMP NS Connection→EMP NS Connection V2.51 Troubleshooting.**



- Fixed error message displayed by the NVIDIA utility

Failure Symptom

When starting Quick Wireless/USB Display/NS Connection on a PC with the built-in NVIDIA graphics chip (ex. ThinkPadT61 NVIDIA Quadro NVS 140M/NVIDIA Quadro FX 570M Display Driver), the NVIDIA utility displays consecutive error messages. As a result, some PCs will experience a lock-up.

Countermeasure

Hardware acceleration level is set to 3 when Quick Wireless/USB Display/NS Connection are being used.

Limitation

By setting hardware acceleration level to “3”, the mouse cursor flickers more visibly than the setting of “None”. This symptom can be avoided by unchecking the box for **Transfer Layered Window** on the Adjustment performance tab in the **Set Options** window of NS Connection.

Note: When NS connection is being used, and the hardware acceleration setting is changed manually, at next startup, NS connection starts with the same setting level of hardware acceleration.

Limitation

All Operating Systems

- When using EAP type of security that consumes a lot of CPU resources, projectors may disconnect from NS connection. The solution is to click Set Options of NS Connection and set Adjust Performance to Fast.
- It takes more time for the PowerLite 1725 / 1735W / 1825 / Pro G5150 / Pro G5350 projectors to disconnect from NS connection as compared to the PowerLite 1705 / 1715 / 1815 projectors, due to the limitation of the new OS (WindowsCE) on IM-X4 projectors.
- To avoid conflicts between the Quick Wireless and other makers' utilities, when the Quick Wireless starts, this version stops services of the other utilities listed in the attached file (Exhibit 1). When quitting Quick Wireless, the other utilities resume their services.
- In the network environment using IEEE 802.11 b/g standards, the wireless connection may drop under the following conditions. Due to specification of wireless controllers, some wireless controllers don't send their beacon periodically. Even if a projector is connected to a PC via wireless, if the projector doesn't detect the beacon for 11b signal for a certain period (30 – 60 seconds) from the PC, the projector judges that there isn't any PC using the 11b signal in the network and switches to communication with 11g (default) signal. On the other hand the PC still tries to communicate with 11b. As a result, the wireless connection between the projector and the PC drops.

Solutions to this problem:

- a. Establish a wireless communication between the PC and projector via 802.11a signal.

Windows OS

- **Due to a limitation of the module VLC for the Movie Sending mode of the IM-X4 version projectors, when IM-X4 projectors display MPEG2 and WMV images in Movie Sending mode via NSC V2.40, fast-forward and rewind functions cannot be used. When IM-X3 projectors display MPEG2 via NSC V2.40, fast-forward and rewind functions can be used.**

Windows Vista OS

- Multi screen display function cannot be used
- Virtual display driver cannot be installed in PC.
- When UAC (User Account Controls) screen is being displayed, the projected image pauses.
- The Motion picture of Windows photo gallery cannot be projected in full-screen mode.
- Still images and motion pictures from Windows Media Center cannot be projected in full-screen mode.
- Since NS Connection can capture Layered windows, the tool bar of NS Connection is projected.
-
-
- When projecting images via NS Connection, mouse cursor might blink depending on PC specification.

	<p>Macintosh OS</p> <p>In case of uninstalling NSC V2.20 or later version, it is possible to uninstall by following 2 methods.</p> <ul style="list-style-type: none"> - Delete by installer exclusively for NSC version which you want to uninstall. <p>For example, when you want to uninstall NSC V2.40, you need to use installer for NSC V2.40. NSC V2.20 and later version can not be uninstalled automatically by different version installer.</p> <ul style="list-style-type: none"> - Delete manually.
--	---

System Requirements:

OS	Windows 2000 SP4/ XP Home Edition/ XP Professional(32bit) /Vista SP1 Home Basic / Home / Premium / Ultimate / Business / Enterprise(32bit) Mac OS X 10.3 minimum, OS 10.3.9/10.4.5/10.5.1 recommended
CPU	Windows: Mobile Pentium III 1.2GHz at least (Pentium M1.6GHz at least recommended) Mac: Power PC G3 900MHz at least recommended
Memory	At least 256MB (At least 512MB recommended)
Available hard disk space	At least 20MB
Display	Minimum- VGA(640x480), Maximum- UXGA (1600 x 1200) 16-bit color or more

Obtaining the Update:

Download epon13123.exe from www.epson.com to the version 2.50 update for NS Connection.

The files are extracted and copied to C:\EPSON\epson13123_EMP_NS_Connection_251. The user should be directed to this folder to find the bulletin. The program will automatically install after the download file is extracted.

Note: on the Mac, the extraction process copies the epon13124_EMP_NS_Connection_251 folder to the desktop. The program and bulletin are inside this folder. The user will double-click on NSCv2.51_Installer to start the installation process.

Software Upgrade History:

Version	Release date	Remarks
1.00	December 25, 2002	New release
1.10	January 1, 2003	Release for PowerLite 7850p
1.20	September 10,	Improved the transfer rate specification for PowerPoint

	2003	images
1.30	May 31, 2004	Support added for WPA and LEAP
1.31	June 18, 2004	Improved screen problem issue
1.32	January 18, 2004	Improved the internal function of connecting to the projector
1.40	April 1, 2005	<ul style="list-style-type: none"> • Addition of Presentation Mode and Interruption Prevention function • Able to present with video set for 32 bit color • Function improvement with Excel and PowerPoint • Improved ESSID search lockup prevention when certain LAN adapters and drivers are used
2.00	2006/06/20	<ul style="list-style-type: none"> • Addition of multi screen display function • Addition of movie sending mode • - Improvement of connection and usability
2.10	2006/12/08	<ul style="list-style-type: none"> • Improvement in the ability to search projectors by Automatic Search. (For Windows) • Improvement in the operability of choosing projector. • Improvement in operability and visibility of "Connect" button. • Preventing Virtual Display from being used as primary display. • Improvement in the ability of image processing speed. (For Mac) • - Change the packet size for a connection request command used by Quick connection.
2.20	2006/05/29	EMP NS Connection V2.20 supports Windows Vista (Home Basic /Home Premium/Ultimate/Business/Enterprise).
2.30	Nov. 27, 2007	<ul style="list-style-type: none"> • Supported picture transfer for EMP-1825 • Improved wireless search and connection abilities. • - Added video format supporting movie sending mode
2.40	Mar. 24, 2008	<ul style="list-style-type: none"> • EMP NS Connection V2.40 supports Windows Vista Service Pack 1 • - Supports 24 languages
2.50	Jun.2,2008	Supported image transfer and virtual display of 1280 x 768 <ul style="list-style-type: none"> • Changed the operation method to prevent NS connection from being blocked by Windows Firewall Added another wireless LAN utility that NS connection supports
2.51	Feb.9,2009	<ul style="list-style-type: none"> - Addition of supported models (PowerLite-85/825/826W) - Addition of supported languages - Addition of troubleshooting function (Only for Windows)

[Exhibit 1] Wireless LAN client list that NSC V2.30 and V2.40 stops their service process

	Manufacturer Name	Adapter Name	Wireless LAN Utility Name
Supported by V2.30	D-Link	Air Plus XTREMEG DWL-G650	D-Link AirPlus XtremeG Utility (CD)
	NETGEAR	WN511T	Smart Wireless Utility Ver.1.1.5.9(CD)
	BUFFALO	Buffalo all products	Client Manager 3 Ver.1.2.10(Web)
	IBM	ThinkPad products	Access Connection(Web) *1 Ver.4 or later
	IBM	ThinkPad products	Access Connection(Web) *1 Ver.3.71
	Logitec	Logitec LAN-WAG/U2 Wireless LAN Adapter	Logitec Wireless LAN Client Utility
	Linksys	Wireless-G Notebook Adapter v.5.0	WPC54G-JP setting utility
	NETGEAR	WG511AJP	NETGEAR WG511A Smart Wizard Ver3.2.3.306
	NETGEAR	WGM511	NETGEAR SMART WIZARD -Wireless Assistant WGM511 Ver 1.0.0.7
	NETGEAR	WPNT511	NETGEAR WPNT511 SMART WIZARD Ver1.1.3.0
	Linksys	WPC300N	Wireless-N Notebook Adapter Wireless Network Monitor v1.05
	Linksys	WPC54G	Wireless-G Notebook Adapter Wireless Network Monitor Ver 3.1
	Linksys	WPC54GX4	Wireless-G Notebook Adapter with SRX400 Setup Wizard V1.1
	Linksys	WUSB54GP	Wireless-G Portable USB Adapter WLAN Monitor v1.05
	Linksys	WUSBF54G	Wireless-G USB Adapter with Wi-Fi Finder
	NETGEAR	WG511 v2	

	Linksys	WPC54GX	Wireless-G Notebook Adapter With SRX Wireless Network Monitor v. 1.2
Supported by V2.40	Linksys	WUSB54GSC	Compact Wireless-G USB Adapter Wireless Network Monitor v1.05
Supported by Quick Wireless Connection V.1.00 / NSC V2.50	Atheros		Atheros Client Utility
Supported by Quick Wireless Connection v1.02 / NSCv2.51	Broadcom	BCM4311 / BCM2050	Broadcom Wireless Utility
	NETGEAR	WN511B	NETGEAR WN511B Smart Wizard Utility
	NETGEAR	WG111v3	NETGEAR WG111v3 Smart Wizard Utility
	NETGEAR	wn111	NETGEAR WN111 Smart Wizard Utility
	NETGEAR	WUSB600N	Linksys Wireless Network Monitor
	PLANEX	GW-US300MiniW	PCI GW-US300MiniW Utility

*1: Because Access Connection service stops, power display of Power Manager becomes invalid.

EPSON PRODUCT SUPPORT BULLETIN

Date:	04/20/2009	Originator:	JAM
PSB #:	PSB.2009.06.001	Authorization:	<i>Kas</i>
Reference:	TI 09-05e Rev. A/B	Total Pages:	5
Product(s):	PowerLite 735c / Cinema 500 / 737c / 745c / 755c / 765c / 830p / 835p / 1705c / 1715c / 6100i / 6110i / 7800p / 7850p / 7900NL / 8300i / 8300i with EasyMP.net module / 9300NL / 1815p / 1825 / 822p / 83c / 822+ / 83+ / G5000 / Pro G5150 / Pro G5350 / Pro G5200W / 1725 / 1735W / 400W / 410W / 84 / 85 / 825 / 826W PowerLite 61p / 81p / 82c / 821p / 1810 / 260d (Latin America) / 280d (Latin America) with TCP/IP to Serial converter		
Subject:	Release of EMP Monitor for Windows version 4.30		

This bulletin was created to inform you of the release of the new version 4.30 of the Epson EMP Monitor software utility.

Description of Change:

Improvements have been made to the EMP Monitor software utility.

Note: For the PowerLite 61p / 81p / 82c / 821p / 1810 / 260d (Latin America) / 280d (Latin America) models, a serial to TCP/IP conversion adapter is necessary. The function of Auto Update does not work for these models. You need to manually click on refresh to get an updated status of projectors.

Reason:

The improved points of version 4.30 are as follows:

Application	EMP Monitor
Version upgraded	Version 4.22 → Version 4.30
Improved points	(1) Addition of 7 new languages - Indonesian, Croat, Slovak, Bulgarian, Malay, Vietnamese, and Hebrew Existing 27 languages - Chinese (Traditional), Netherlands, Danish, Polish, Hungarian, Czech, Romanian, Slovene, Norwegian, Swedish, Finnish, Russian, Ukrainian, Greek, Turkish, Arabic (Windows NT4 does not support), English, Japanese, French, German, Italy, Spanish, Portuguese, Chinese (Simplified), Korean, Catalan, Thai

(2) Addition of Input Source (Only PowerLite 84 / 85 / 825 / 826W)
Previous version of EMP Monitor included USB Display, USB and LAN as one source: EasyMP.

The input source buttons for USB display, USB, and LAN are available as separate input sources as shown below:

- Old version - EMP Monitor V4.22

EMP Monitor V4.22



- New version - EMP Monitor V4.30

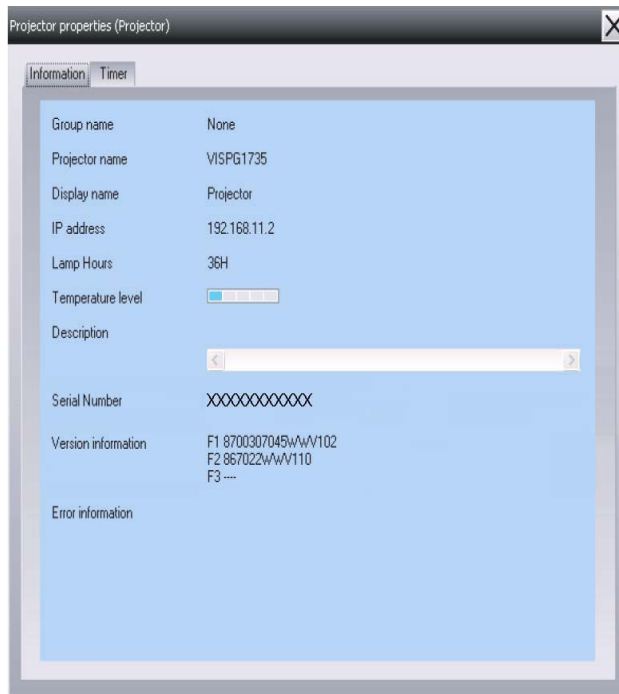
EMP Monitor V4.30



(3) New feature for the PowerLite 84 / 85 / 825 / 826W.

Displays projector's serial number in the Menu settings

- The projector's serial number is now displayed in the projector's menu under "info",
- EMP Monitor can also display the projector's serial number as shown below:



Limitations	When the PowerLite1725 / 1735W exhibit a Lamp Cover Open error state, EMP Monitor cannot detect the error. The reason is that when the lamp cover is opened, the primary power source that reports the error state to EMP Monitor is turned off immediately. This is different from other models which make the secondary power source turn off under the same condition.
--------------------	---

Note: EMP Monitor Ver. 4.xx is not compatible with EMP Monitor Ver. 3.05 and earlier versions. EMP Monitor Ver. 4.xx cannot read the setting files of EMP Monitor Ver. 3.05 and earlier versions.

System Requirements:

OS	<ul style="list-style-type: none"> Windows 98 SE / Me / NT 4.0 (SP6) *Except Arabic and Hebrew / Windows 2000 Pro / XP Home Edition / XP Professional (32 bit) / Vista Home Basic / Home Premium / Ultimate / Business / Enterprise (32 bit) *Except Ukrainian / Vista SP1 Home Basic / Home Premium / Ultimate / Business / Enterprise (32 bit) Internet Explorer Ver. 5.0 or later must be installed
CPU	Minimum: Pentium MMX 166 MHz (Recommended: Pentium II 233 MHz or higher)
Memory	At least 64 MB (Recommended: 128 MB or above)

Available hard disk space	At least 50 MB
Display	SVGA (800x600) or higher resolution, 32 bit or higher display color

Obtaining the Update:

Download [epson13055.exe](http://www.epson.com) from www.epson.com to get the version 4.30 update for EMP Monitor. The files are extracted and copied to C:\EPSON\epson13055_emp_monitor_430.

This file is a self-extracting archive and will start the installation utility for EMP Monitor. Follow the on-screen instructions during the installation process.

Software Upgrade History:

Version	Release date	Remarks
3.00	December 25, 2002	Supported PowerLite 735c
3.01	February 26, 2003	Supported PowerLite 7800p / 8300i
3.02	April 18, 2003	Supported PowerLite 7850p / 8300i with EasyMP.net option module
3.03	November 21, 2003	Supported PowerLite Cinema 500
3.04	April 1, 2004	Supported Serial -TCP/IP conversion adapter for PowerLite 61p / 81p
4.01	October 18, 2004	Supported projectors that are configured on a large-scale network.
4.02	August 29, 2005	Addition of timer function and auto search function by specifying IP addresses. Improvement of communication logs size.
4.10	May 8, 2006	Addition of new functions, Improvement of usability, and Corresponding to PowerLite 6100i.
4.20	May 15, 2007	EMP NS Connection V2.20 supports Windows Vista (Home Basic / Home Premium / Ultimate / Business / Enterprise).
4.21	September 26, 2007	Supported 25 languages
4.22	March 31, 2008	Supported 27 languages Addition of new Error Information Supported Video (BNC)
4.30	April 3, 2009	Supported 34 languages Additional Input Sources Displays projector's serial number in Menu settings

EPSON PRODUCT SUPPORT BULLETIN

Date:	12/18/2008	Originator:	DS
PSB #:	PSB.2009.01.006	Authorization:	<i>Kps</i>
Reference:	TI 08-22e Rev. A/B	Total Pages:	7
Product(s):	PowerLite 735c / 737c / 745c / 755c / 765c / 835p 1705c / 1715c / 1815p / 1825p / 7850p / 8300i with EasyMP.net option Pro G5150 / Pro G5350 / 1725 / 1735W		
Subject:	Release of Check Tool for Network Projectors V1.00 (for Windows)		

This bulletin was created to inform you about the release of Epson Check Tool software for Network Projectors version 1.00.

Description of Change:

First release of the Check Tool for Network Projectors for Windows

Reason:

The Check Tool for Network Projectors makes it possible to easily check whether EPSON Quick Wireless Connection and EMP NS Connection's Quick Connection mode can operate on the users' Windows PC properly. The Check Tool for Network Projector can also be used as a reference check before the purchase of the projector or as a troubleshooting Tool.

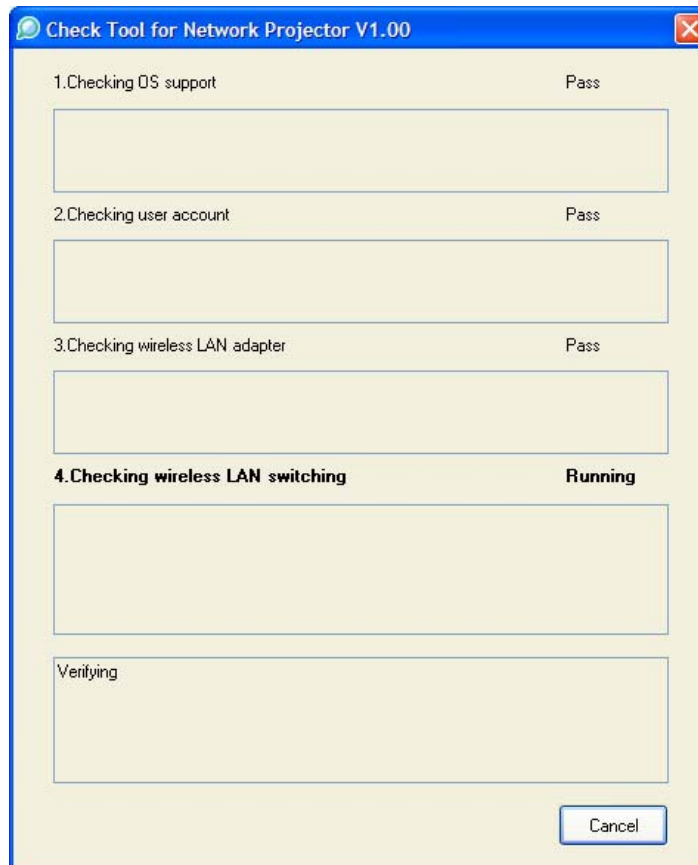
1) Function of the Application

Application name	Check Tool for Network Projector V1.00
Notes	<p>The Check Tool checks automatically whether EMP Quick Wireless Connection and EMP NS Connection's Quick Connection mode can operate properly on the user's Windows PC in terms of the following four points:</p> <ol style="list-style-type: none">1. Checks OS support.<ul style="list-style-type: none">• Checks whether the OS is supported by EMP Quick Wireless Connection / EMP NS Connection.2. Checks user account<ul style="list-style-type: none">• Checks user's account for administrator privileges to install EMP Quick Wireless Connection / EMP NS Connection.3. Checks the wireless LAN adapter<ul style="list-style-type: none">• Checks whether the wireless LAN adapter and driver are installed on the PC.• Checks whether the wireless LAN is active.

Notes

4. Checks wireless LAN switching
 - Checks whether wireless LAN adapter is turned ON.
 - Checks whether EMP Quick Wireless Connection and EMP NS Connection's Quick Connection mode can set the SSID on the user's PC when trying to connect to a projector using EMP Quick Wireless Connection and EMP NS Connection's Quick Connection Mode.

The Check Tool checks for communication conflict and whether it can actually stop the utilities when both utilities--EMP Quick Wireless Connection V1.00 and EMP NS Connection-- are both installed on the users PC.



Notes	<p>Output of the log file:</p> <ul style="list-style-type: none"> • The Check Tool records the result in a text file (log file). Usually, the log file is saved under the name of CheckInfoDATE.log in the directory where “EB_CHT.exe” is stored
Limitations	<ul style="list-style-type: none"> • When the Check Tool is checking the user’s PC, the user’s PC drops off network. • The Check Tool does not check whether the firewall of manufacturers of security software other than Windows may be blocking EPSON Quick Wireless Connection/EMP NS Connection.

2) Operating Environment

Check Tool for Network Projector V1.00

OS	Windows 2000 SP4 Rollup1 / XP Home Edition/ XP Professional(32bit) non-SP,SP1,SP2,SP3 /Vista SP1 Home Basic/Home Premium/Ultimate/Business/Enterprise(32bit) non-SP,SP1
CPU	Windows: Mobile Pentium III 1.2GHz at least (Pentium M1.6GHz at least recommended)
Memory	256MB at least (Recommendation: 512MB at least)
Disk space	20MB at least
Display	Resolution: At least VGA(640 x 480) but no more than UXGA (1600 x 1200) At least 16 bit color

- 3) **Location of download file: Check Tool for Network Projector V1.00**
Download `epson12794.exe` from the Epson website (www.epson.com).
This is a self-extracting file; please follow the screen prompts to install the Check Tool software.

- 4) Double-click the `[EB_CHT.exe]` icon

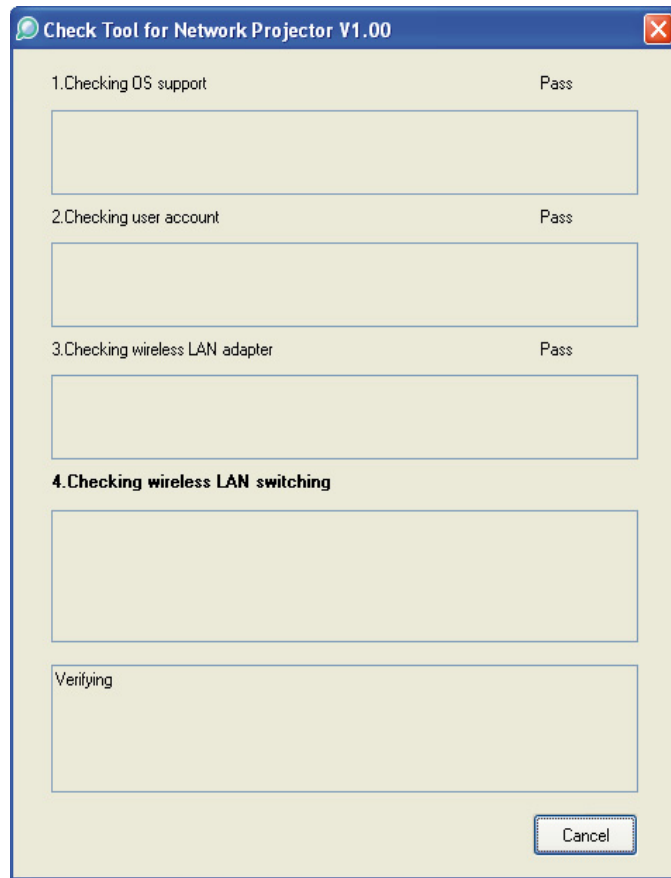
- 5) Read the contents of the `[SOFTWARE LICENSE AGREEMENT]`, and click the `[Agree]` button.

- 6) A dialog indicating the program is starting opens with the following message:

**This tool cuts off the network connection temporarily.
Click the `[Start]` button to begin verification.**

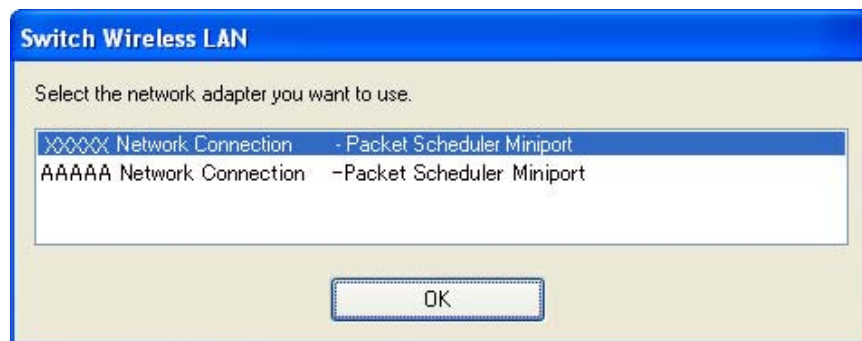


- 7) The Check tool dialog is displayed. It takes a few minutes for the results of the verification are displayed



- 8) When two or more wireless LAN adapters are available on your computer, the adapter selection dialog opens.

Select the wireless LAN adapter and press the OK button to continue.



9) When the verification is complete, the result is displayed on the bottom of the dialog.

The result is stored in the same folder as the check tool.

File Name: CheckInfo<****>.log

**** indicates the created date and time.

[Exhibit 1]

Wireless LAN client list that NSC and Quick Wireless Connection stop their service process

	Manufacturer Name	Adapter Name	Wireless LAN Utility Name
Supported by NSC V2.30	D-Link	Air Plus XTREMEG DWL-G650	D-Link AirPlus XtremeG Utility (CD)
	NETGEAR	WN511T	Smart Wireless Utility Ver.1.1.5.9(CD)
	BUFFALO	Buffalo all products	Client Manager 3 Ver.1.2.10(Web)
	IBM	ThinkPad products	Access Connection(Web) *1 Ver.4 or later
	IBM	ThinkPad products	Access Connection(Web) *1 Ver.3.71
	Logitec	Logitec LAN-WAG/U2 Wireless LAN Adapter	Logitec Wireless LAN Client Utility
	Linksys	Wireless-G Notebook Adapter v.5.0	WPC54G-JP setting utility
	NETGEAR	WG511AJP	NETGEAR WG511A Smart Wizard Ver3.2.3.306
	NETGEAR	WGM511	NETGEAR SMART WIZARD - Wireless Assistant WGM511 Ver 1.0.0.7
	NETGEAR	WPNT511	NETGEAR WPNT511 SMART WIZARD Ver1.1.3.0

	Linksys	WPC300N	Wireless-N Notebook Adapter Wireless Network Monitor v1.05
	Linksys	WPC54G	Wireless-G Notebook Adapter Wireless Network Monitor Ver 3.1
	Manufacturer Name	Adapter Name	Wireless LAN Utility Name
	Linksys	WPC54GX4	Wireless-G Notebook Adapter with SRX400 Setup Wizard V1.1
	Linksys	WUSB54GP	Wireless-G Portable USB Adapter WLAN Monitor v1.05
	Linksys	WUSBF54G	Wireless-G USB Adapter with Wi-Fi Finder
	NETGEAR	WG511 v2	
	Linksys	WPC54GX	Wireless-G Notebook Adapter With SRX Wireless Network Monitor v. 1.2
Supported by NSC V2.40	Linksys	WUSB54GSC	Compact Wireless-G USB Adapter Wireless Network Monitor v1.05
Supported by NSC V2.50 & Quick Wireless Connection V1.00	Atheros		Atheros Client Utility

*1: Because Access Connection service stops, power display of Power Manager becomes invalid.

Software Upgrade History Quick Wireless

Version	Release date	Remark
V1.00	August. 12, 2008	V1.00 release

EPSON PRODUCT SUPPORT BULLETIN

Date:	09/17/2008	Originator:	VS
PSB #:	PSB.2009.01.003	Authorization:	Kps
Reference:	TI 08-29e Rev. A	Total Pages:	8
Product(s):	PowerLite 1735W, 735c, 737c, 745c, 755c, 765c, 835p, 1705c, 1715c, 1725, 1815c, 1825, 7850p, 7950p, 8300i with EasyMP.Net optional module, Pro G5150 and Pro G5350 projectors		
Subject:	EMP SlideMaker2 updated Version 1.30 – provides scenario support for WXGA (1280 x 800) resolution		

This bulletin was created to inform users about a software update for the EMP SlideMaker2 to Version 1.30.

Description of Change:

Updated software release for creating scenarios in WXGA (16:10) format.

Reason:

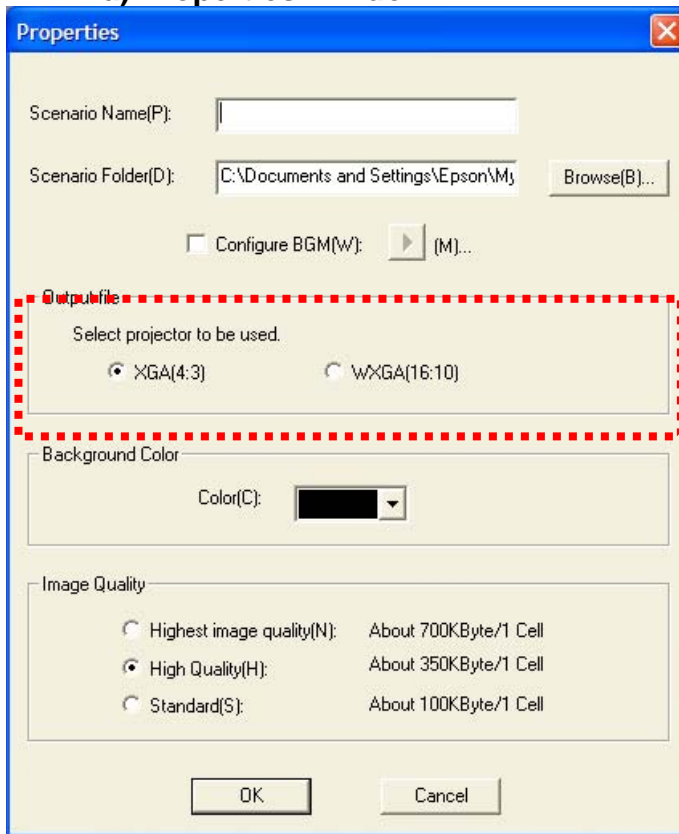
- The updated version of EMP SlideMaker2 provides support for creating scenarios in XGA (1024 x 768) resolution and WXGA (1280 x 800) resolution.
- It also provides the ability to select scenarios in XGA (4:3) or WXGA (16:10) format, depending on the projector model used for the presentation.

Limitations:

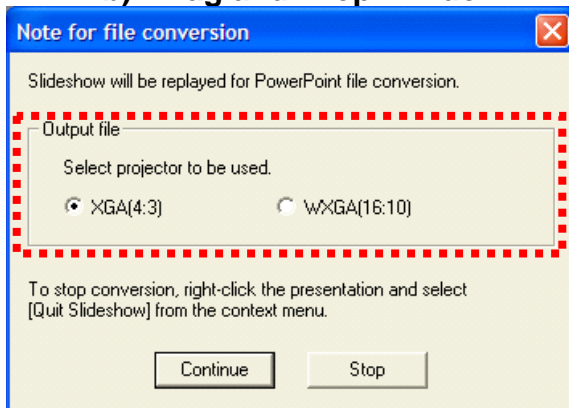
- When creating a 16:10 scenario, the JPEG image must be in a 16:10 format.
- A 16:10 converted scenario can only be displayed with a WXGA (1280 x 800) projector.
- A 4:3 converted scenario can be displayed with a XGA or WXGA supported projector.
- When adding a PowerPoint slide from a thumbnail window to EMP SlideMaker2 with Microsoft Office 2007, the scenario image file may deteriorate due to an issue with Microsoft Office 2007 SP1.

1) Selecting Aspect Ratio for the Projector being used:

a) Properties Window



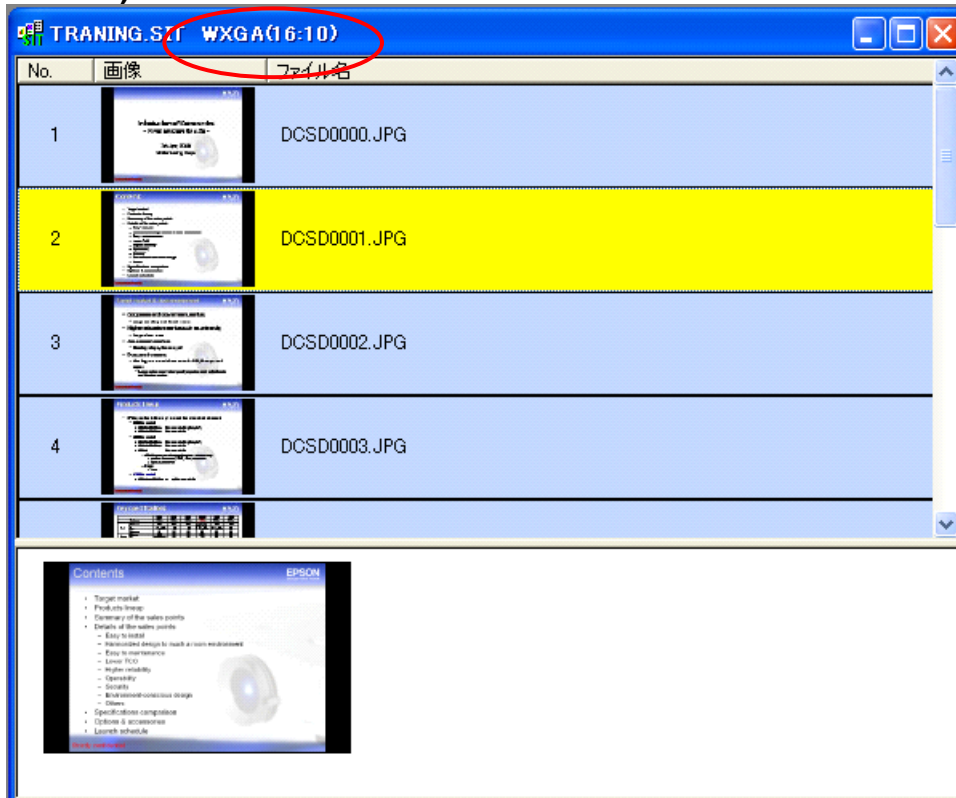
b) Drag and Drop Window



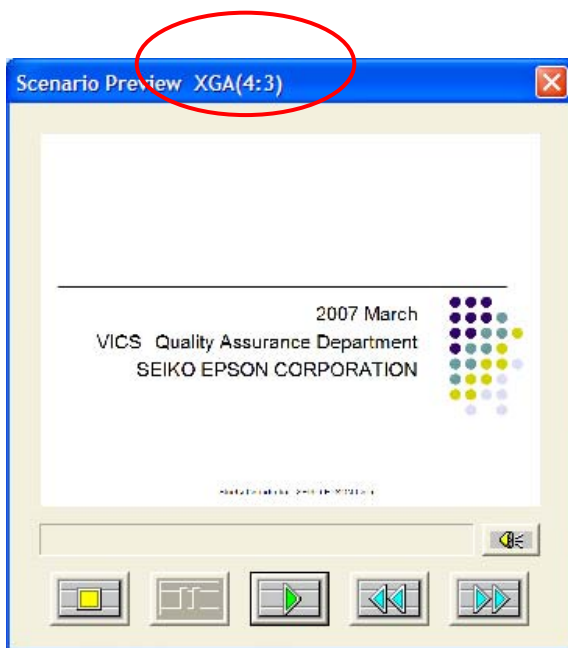
2) How to Verify the Aspect Ratio of the Scenario:

The resolution of the scenario is displayed in the window title of the Scenario Window and Scenario Preview as shown below:

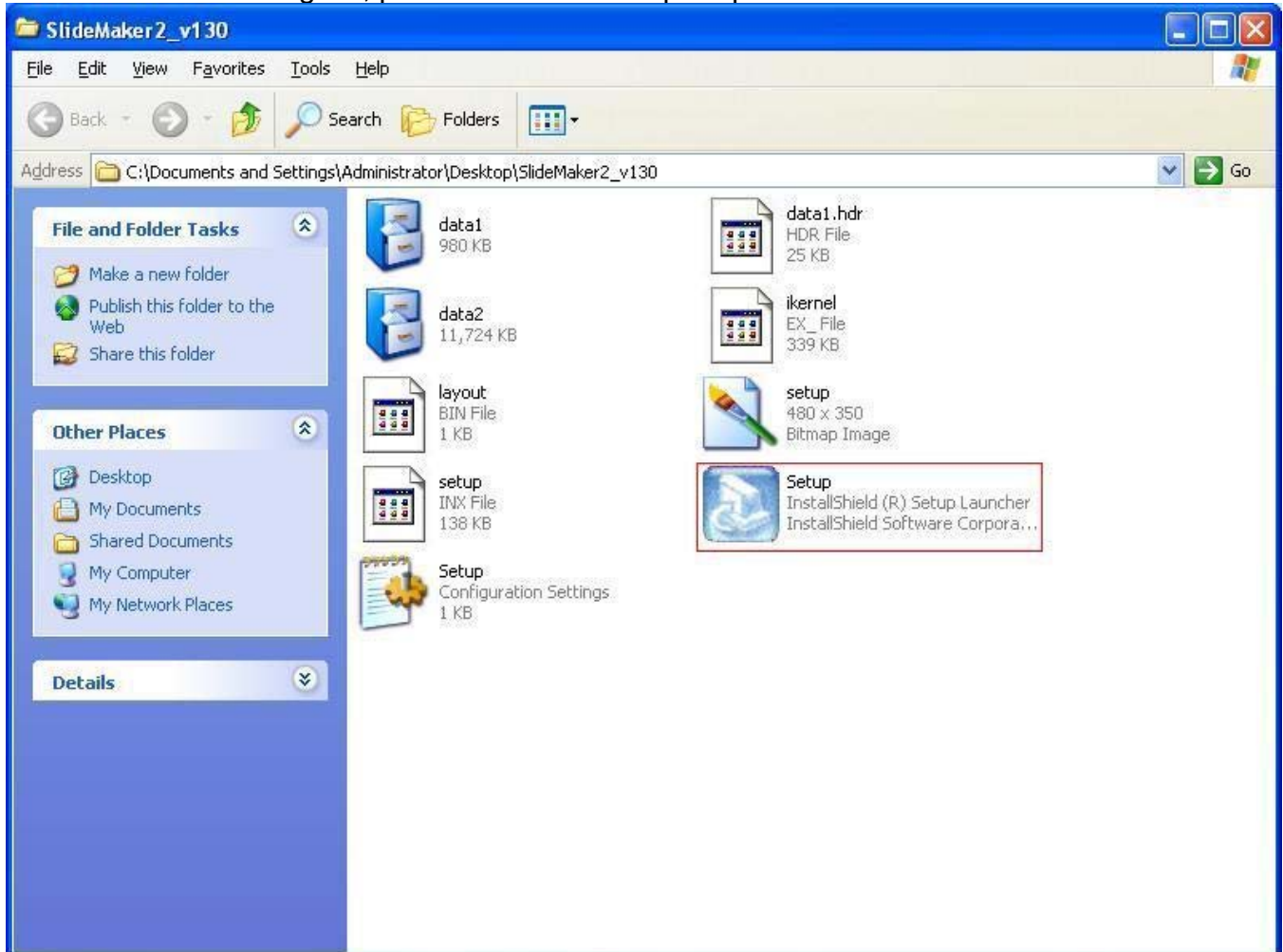
a) Scenario Window



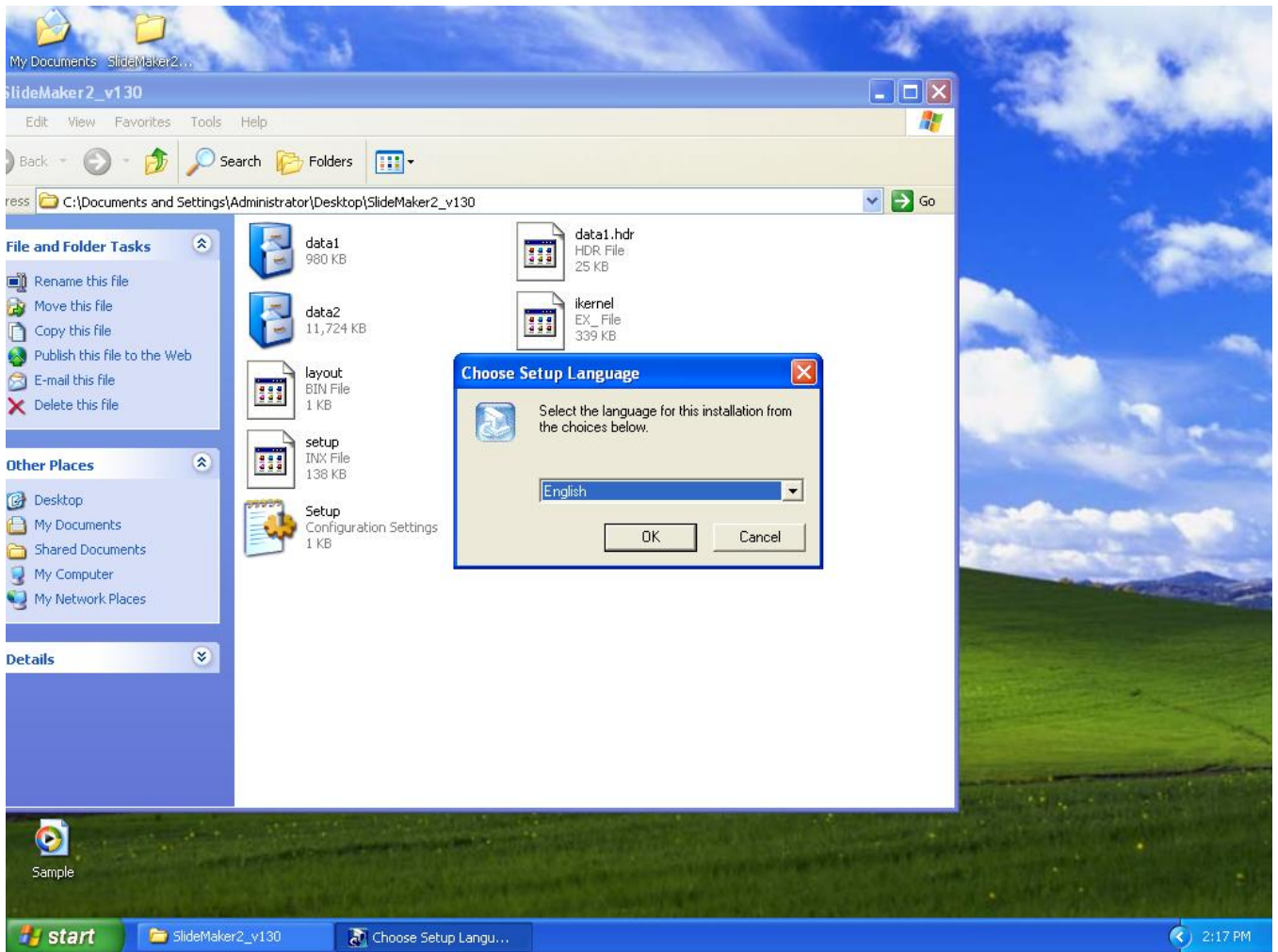
b) Scenario Preview



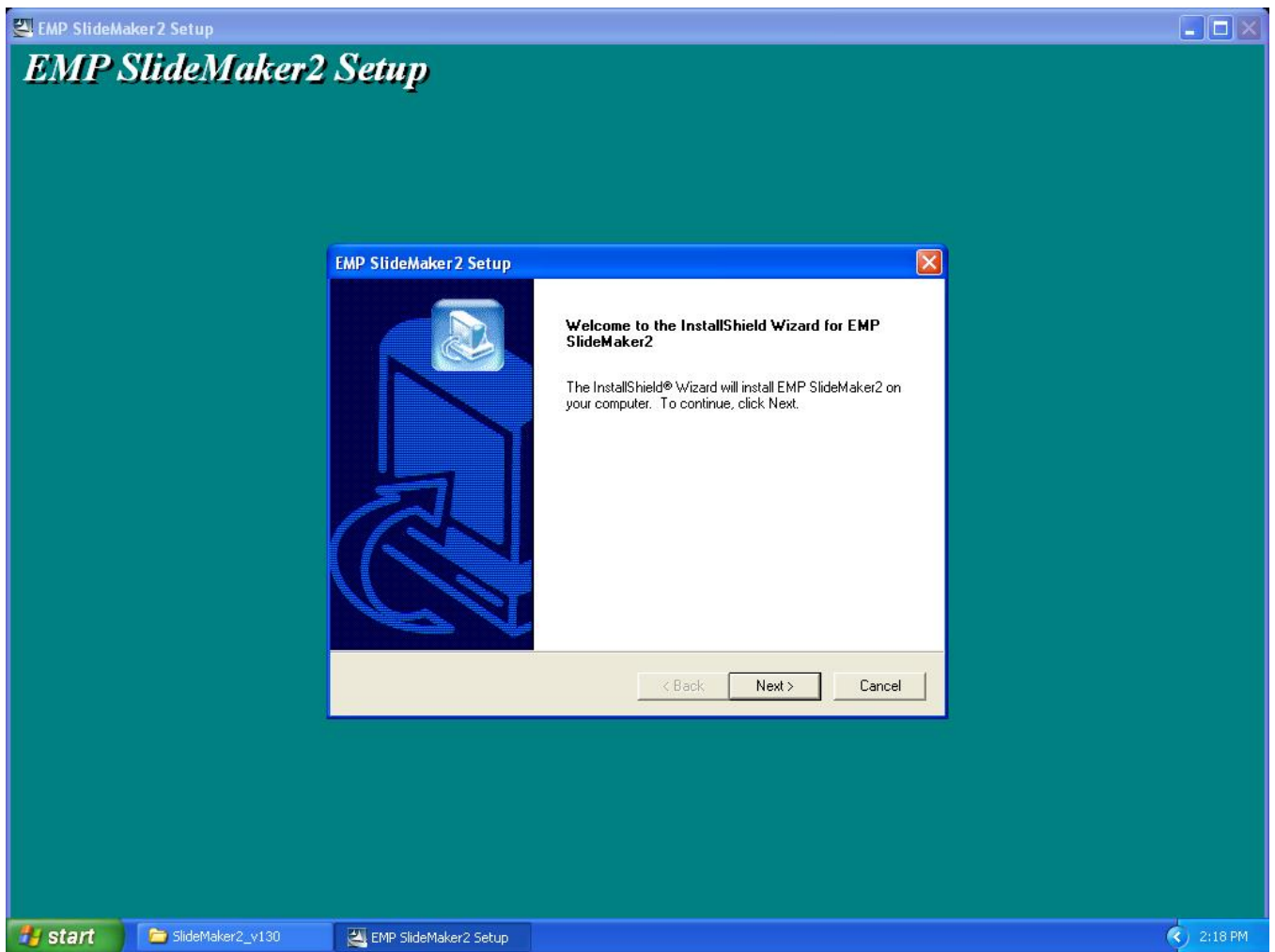
3) Location of download file: EMP SlideMaker2 updated Version 1.30
Download epson12812.exe from the Epson website (www.epson.com)
This is a self extracting file, please follow screen prompts.



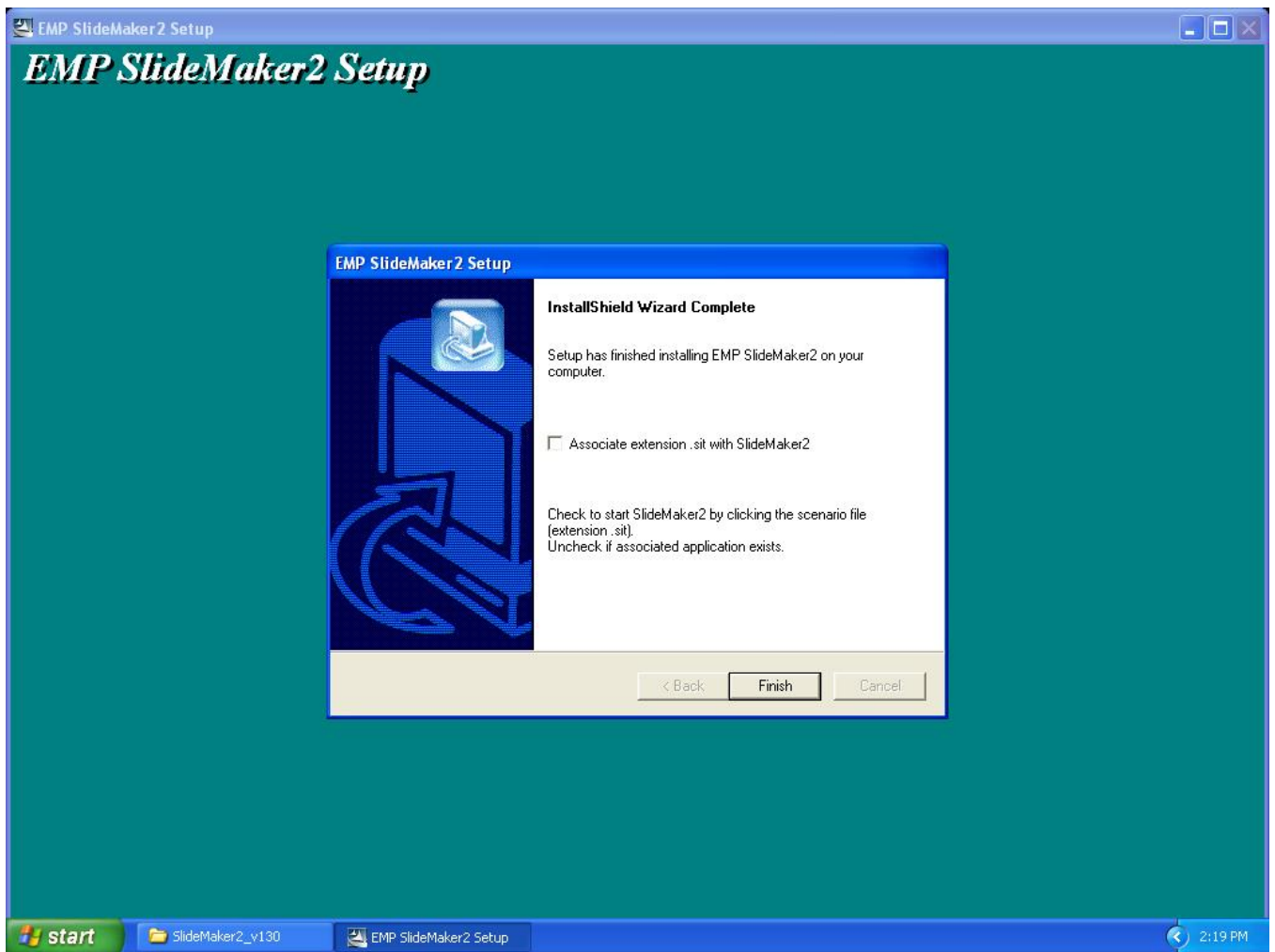
After "Clicking" on the "Setup.exe" file, your will be prompted to:



Select you language.



Click "Next" at this screen.



Click "Finish" to complete the installation.

4) **How to User the software:** Please refer to the original documentation that came with your Projector.

5) **Operating Environment:**




OS	Windows 98/98SE/Me/ 2000 Professional/XP Home Edition SP4 / XP SP1,SP2,SP3 Professional(32bit) / Vista non-SP,SP1 Home Basic/Home Premium/Ultimate /Business/Enterprise(32bit)
Office	Office2000、 OfficeXP、 Office2003、 Office2007
CPU	At least Celeron 300MHz (Recommended: Celeron 400MHz or above)
Memory	At least 64MB (Recommended: 128MB or above)
Disk space	At least 50MB
Display	At least SVGA (800×600) (Recommended: XGA(1024x768))

EPSON PRODUCT SUPPORT BULLETIN

Date:	11/13/2007	Originator:	AP
PSB #:	PSB.2007.11.005A	Authorization:	Kas
Reference:	TI 07-63e, Rev. A	Total Pages:	3
Product(s):	Epson EMP Monitor		
Subject:	EMP Monitor Version 4.21 Release		

This bulletin was created to inform you of the release of Epson EMP Monitor version 4.21 utility.

New Functions and Improvements:

New Functions, Improvements	Supported Models	Function / Improvement Description
Support for 25 languages	All projectors (see Supported Projectors table)	Language support extended to include Chinese (traditional), Dutch, Danish, Polish, Hungarian, Czech, Romanian, Slovene, Norwegian, Swedish, Finnish, Russian, Ukrainian, Greek, Turkish, Arabic. Languages supported in prior version of EMP Monitor: English, Japanese, French, German, Italian, Spanish, Portuguese, Chinese (simplified), Korean
Abnormally low air flow notification 	PowerLite 6100i / 6110i	Indicates an abnormal decrease in the force of air flow through the air filter. User should check for air filter obstructions, clean and replace air filter as necessary. This feature is available only for the indicated models.
Air flow sensor error 	PowerLite 6100i (with firmware version 1.10 or later) / 6110i	Indicates air flow sensor error. This feature is available only for the indicated models
Clean air filter notification 	PowerLite 6110i	User notification to clean air filter. This feature is available only for the indicated model.

Supported Projectors:

This application supports the following Epson projectors:

PowerLite 735c	PowerLite 1715c	PowerLite 1815p
PowerLite 737c	PowerLite 6100i	PowerLite 822p
PowerLite 745c	PowerLite 7800p	PowerLite 6110i
PowerLite 755c	PowerLite 7850p	PowerLite Cinema 500
PowerLite 765c	PowerLite 7900NL	PowerLite 61p
PowerLite 830p	PowerLite 8300i / 8300NL	PowerLite 81p
PowerLite 835p	PowerLite 8300i with the EasyMP.net Option Module installed	PowerLite 82c
PowerLite 1705c	PowerLite 9300NL	PowerLite 821p

Supported Operating Environment:

Operating System requirement	<ul style="list-style-type: none"> Windows 98SE / Me / NT 4.0 SP6 (except Ukrainian) / 2000 Professional / XP Home Edition / XP Professional (32 bit) / Vista Home Basic / Vista Home Premium / Vista Ultimate (32 bit) / Vista Business (32 bit) / Vista Enterprise (32 bit) (except Arabic) Internet Explorer 5.0 or later
Minimum CPU requirement	Pentium MMX 166 MHz (Recommended: Pentium II 233 MHz or faster)
Minimum RAM requirement	At least 64 MB (Recommended: 128 MB or more)
Drive space requirement	At least 50 MB free
Display requirements	SVGA (800 x 600) or higher resolution, 32 bit color display or higher

Obtaining the Update:

Download [epson12456.exe](http://www.epson.com) from www.epson.com to get the version 4.21 update for EMP Monitor. This file is a self-extracting archive and will start the installation utility for EMP Monitor.

Software History:

Version	Release Date	Notes
3.00	December 25, 2002	Added support for the PowerLite 735c
3.01	February 26, 2003	Added support for the PowerLite 7800p / 8300i
3.02	April 18, 2003	Added support for the PowerLite 7850p / PowerLite 8300i with the EasyMP.net option module installed
3.03	November 21, 2003	Added support for the PowerLite Cinema 500
3.04	April 1, 2004	Added support for the Serial ↔ TCP/IP conversion adapter for the PowerLite 61p / 81p
4.01	October 18, 2004	Added support for projectors installed on large scale networks
4.02	August 29, 2005	Addition of timer function, auto search by specifying IP address. Improvement of communication logs sizes
4.10	May 8, 2006	Addition of support for PowerLite 6100i with support for additional monitoring features unique to the PowerLite 6100i
4.20	May 29, 2007	Added support for Windows Vista (32 bit)
4.21	September 26, 2007	Increased language support to 25 languages

EPSON PRODUCT SUPPORT BULLETIN

Date:	10/17/2007	Originator:	RY
PSB #:	PSB.2007.10.001	Authorization:	<i>Kps</i>
Reference:	TI 07-25e Rev. A, B	Total Pages:	4
Product(s):	PowerLite 765c / 1705c / 1715c / 1815p		
Subject:	Test Results of USB Memory, USB Card Readers and CF Cards		

This bulletin was created to inform you of the compatibility testing results for USB memory, USB card readers and compact flash cards with the PowerLite 765c / 1705c / 1715c / 1815p projectors. The PowerLite 765c and PowerLite 1815p projectors were used as the benchmarks for these tests.

Models and firmware versions used in the evaluation:

Firmware and Software versions	PowerLite 765c	PowerLite 1815p
PW firmware version	1.0	A1.04
EasyMP IM-X firmware version	1.32	1.1

USB card configurations:

USB memory, USB card readers and compact flash cards used with the USB port (Type A) of the projector

Items evaluated:

Confirm that the projector recognizes the storage devices when connecting and disconnecting them.

Confirm that the files types below work:

- Picture files (BMP, JPEG, GIF, and PNG)
- Movie files (MPEG1/2)
- EMP SlideMaker2 Scenario files
- Slide shows
- Confirm that a file can be written, read and deleted on Compact Flash by FTP (PowerLite 1815p only)

Evaluation results:

Media	Model name	Size	EMP-765	EMP-1815
USB Memory	Princeton PFU-2XS512K	512MB	Pass	Pass
	Princeton PFU-2XS256K	256MB	Pass	Pass
	Princeton PFU-2XS1GK	1GB	Pass	Pass
	Princeton PFU-2XS2GK	2GB	Pass	Pass
	Princeton PFU-2PG/512	512MB	Pass	Pass
	Princeton PFU-2PG/1G	1GB	Pass	Pass
	Princeton PFU-2PG/2G	2GB	Pass	Pass
	Princeton PFU-2TS512	512GB	Pass	Pass
	Princeton PFU-2TS256	256GB	Pass	Pass
	Princeton PFU-2TS1G	1GB	Pass	Pass
	Princeton PFU-2TS2G	2GB	Pass	Pass
	Princeton PFU-2JU/256	256GB	-	Pass
	Princeton PFU-2JU/512	512GB	-	Pass
	Princeton PFU-2JU/1G	1GB	-	Pass
	Philips FM01FD10B	1GB	Pass	Pass *1
	Lexar JDMC1GB-654	1GB	Pass	Pass
	Lexar JDX512-260B	512MB	Pass	Pass
	SONY USM512	512MB	Pass	Pass
	Memorex 32509363	1GB	Pass	Pass
	Imation Pivot Flash Drive	512MB	Pass	Pass
	Coski'n CKE-2GB SILVER RG	2GB	Pass	Pass
	CENTONDSS256-001	256MB	Pass	Pass
	Geek GS-512	512MB	Pass	Pass
DANE-ELEC zLight	512MB	Pass	Pass	
Hagiwara sys-com HUD-1GLJ-BR	1GB	Pass	Pass *1	
ELECOM MF-YU2512SV	512MB	Pass	Pass	
Buffalo RUF2-E1G-B	1GB	Pass	Pass	
I ² O Data TB-ST1G/B	1GB	Pass	Pass	
USB Card Reader	Hama Card reader 1.000&1	-	Fail *1	Fail *2 *3
	SanDisk SDDR-103-E10M	-	Pass	Pass

Compact Flash	PNY P-CF1G-60W-RF3	1GB	Pass	Pass
	SanDisk SDCFH-2048-902	2GB	Pass	Pass

- *1 When using Smart Media or Memory Stick flash memory, the audio of the EMP SlideMaker2 scenario might be distorted. When playing a movie using Smart Media flash memory, the sound and image of the EMP SlideMaker2 scenario might be distorted.
- *2 When using Smart Media or Memory Stick flash memory, the sound of the EMP SlideMaker2 scenario might be distorted.
- *3 When playing motion images stored on CF cards, which are inserted into the card slot of the projector, the sound and image might be distorted.

Additional tests results with the Powerlite 1815p:

Evaluation results of compact flash (CF) cards and adapters:

Test conditions - Connect the CF card and adapters to card slot of the projector

Evaluation items - Confirm that a picture file can be read on compact flash

Category	Manufacture	Product Name	Capacity	EMP-1815
Compact Flash	Lexar	CF8GB-133-380	8GB	Pass
	GREENHOUSE	GH-CF6GDX	6GB	Pass
	I-O DATA□□	CF115-4G	4GB	Pass
	Lexar	CF2GB-80-380	2GB	Pass
	GREENHOUSE	GH-CF512MB	512MB	Pass
	TDK	TC256GT□	256MB	Pass
	I-O DATA□□	CFX-128M	128MB	Pass
	BUFFALO□	RCF-X32MY	32MB	Pass
	TDK□□	TC064WA	64MB	Pass
	Hagiwara sys-com	HPC-CF8GZ2F	8GB	Pass
	Transcend	TS8GCF120	8GB	Pass
	Kingston	CF/2GB-SFE	2GB	Pass
	BUFFALO	RCF-R1G	1GB	Pass

Category	Make	Product Type	Media Type	Media Maker	Product Name	Size	EMP-1815
Adapter	OLYMPUS	MACF-10	XD picture card	OLYMPUS □	MXD1GM3	1GB	Pass
	I-O DATA	CFSD-ADP	SD card	Panasonic	RP-SD128MB	128MB	Pass
	ASKA	5in1 CF-ADP01	MultiMedia Card	Transcend	TS1GMMC4	1GB	Pass
			Memory Stick Pro	SONY	MSX-M256	256MB	Pass
	SANWA	ADR-PCMLT2	MemoryStick-DUO	SONY	MSH-M64A	64MB	Pass
			SD card	SanDisk	SDSDM-1024	1GB	Pass
			Multi Media Card	Transcend	TS1GMMC4	1GB	Pass
			XD card	OLYMPUS □	MXD256P3	256MB	Pass

EPSON PRODUCT SUPPORT BULLETIN

Date:	09/25/2007	Originator:	DJS
PSB #:	PSB.2007.09.001	Authorization:	<i>Kps</i>
Reference:	TI 06-91e Rev. B	Total Pages:	5
Product(s):	PowerLite 755c / 765c / 835p / 1705c / 1715c / 1815p		
Subject:	EPSON Projector control for Win V.1.00 release		

This bulletin was created to inform you on the release of the new Epson Projector Control software version 1.00.

Description:

EPSON Projector Control lets you control the projector from your computer with a one-on-one connection between your computer and the projector over a network. It allows you to perform operations, such as turning the projector on/off and switching sources, from your computer without using the projector's remote control.

Function:

EPSON Projector Control has 2 modes: Advanced Mode and Simple Mode. Although there is a difference in main display layouts between the two modes, their operation procedures are almost the same. The difference is as follows:

Advanced Mode: Each source has each source button. Therefore source can be selected by clicking each source button directly.

Simple Mode: Source buttons are toggle-type. Therefore source can be switched every time the toggle-type button is pressed.

[1] **Advanced Mode**

The main display is larger than that of Simple Mode. Each source has a source button, so the source can be selected by clicking the applicable source button directly.



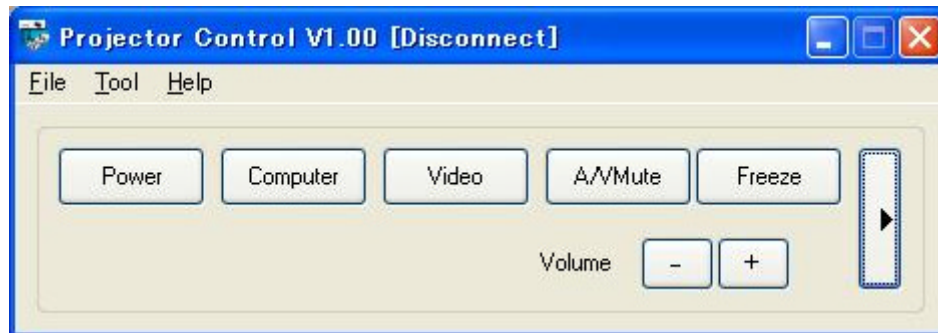
Button Functions For Advanced Mode

Button	Function
Power	Turns the projector power on/off.
Computer1	Switches the input source to the Computer1 input port.
Computer2	Switches the input source to the Computer2 input port.
EasyMP	Switches the input source to EasyMP.
Video	Switches the input source to the Video input port.
S-Video	Switches the input source to the S-Video input port.
A/VMute	Turns the A/V Mute function on/off on the projector.
Freeze	Turns the Freeze function on/off on the projector.
CC	Displays the selection menu for Closed Caption. Select one of the following: "OFF," "CC1," or "CC2." This function may not be available depending on the projector models.
Volume <input type="checkbox"/>	Turns the volume up on the projector.
Volume <input type="checkbox"/>	Turns the volume down on the projector.
	Switches between Advanced Mode and Simple Mode.



[2] Simple Mode

- You need to switch sources by using the toggle-type button but the main display is simpler.

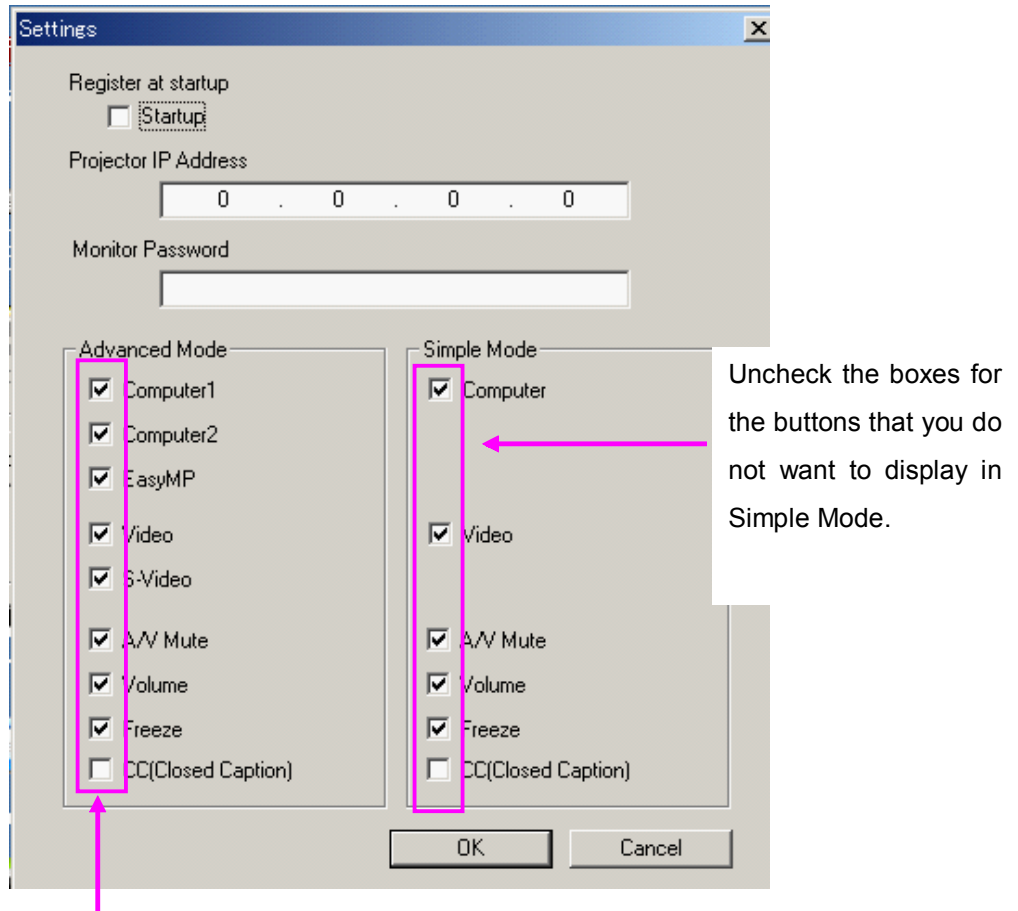


For Simple Mode
There is a difference in the following buttons between
Simple Mode and Advanced Mode.

Button	Function
Computer	Switches the input sources among the Computer input port, the Computer1 input port, the Computer2 input port, and EasyMP. Every time you click the button, the source changes in the following order. Computer input port or Computer1 input port-> Computer2 input port-> EasyMP-> Computer input port or Computer1 input port...
Video	Switches the input sources between the Video input port and the S-Video input port. Every time you click the button, the source changes in the following order. Video input port-> S-Video input port-> Video input port

Item	Function
Register at startup	Check this for EPSON Projector Control to start up automatically when the computer starts.
Projector IP Address	Enter the IP address for the projector to be connected. You need to do this only when you make a connection for the first time or when you want to change to another projector to be connected.
Monitor Password	Enter the Monitor Password that is set on the projector. You do not need to do this when the Monitor Password is not set on the projector.
OK	Click this to reflect the setting changes that you made. The setting screen is saved and closed. Or Click × on the title bar not to reflect the setting changes.
Cancel	Click this to abort the setting changes.

Settings Display



Uncheck the boxes for the buttons that you do not want to display in Advanced Mode.

[3] How to set up EPSON Projector Control software

[Note] Be sure to set the projector to Network ON in Standby Mode in the Extended Menu.

- 1) Download "Epson12378.exe" from Epson website. This file contains "ProjectorControlSetup.exe" which is used to install EPSON Projector Control for Windows V.1.00 on the computer.
- 2) Set up your computer and the projector to connect over a network.
- 3) Start the EPSON Projector Control software as follows: "Start"→"Program"→"EPSON Projector"→"Projector Control V1.00." Then the main screen is displayed. Click "Tool"→"Settings" on the main screen. The setting screen is displayed.
- 4) Enter the Projector IP Address, click "OK" to save, and close the setting screen.

Operation Environment
[EPSON Projector Control V.1.00]

Operation Environment:

OS	Windows 2000 SP4 / XP SP2 32-bit (Professional / Home) / Vista 32-bit (Business / Enterprise / Home Basic / Home Premium / Ultimate)
CPU	At least Pentium MMX 166MHz (Pentium II 233MHz or later recommended)
Memory	At least 64MB
HDD space	At least 50MB
Display	SVGA (800×600) or higher resolution / At least 32-bit color

Additional Note:

Other Epson projector models supported:

PowerLite 6100i / 830p / 83c / 822p

Projector models not supported:

PowerLite 735c / 732c / 737c / 745c / 7800p / 7850p / 7900p / 8300i with the EasyMP.net Option Module installed/ 9300i

EPSON PRODUCT SUPPORT BULLETIN

Date:	8/30/2007	Originator:	DS
PSB #:	PSB.2007.08.001	Authorization:	<i>Kps</i>
Reference:	N/A	Total Pages:	1
Product(s):	Epson Projectors with an HD-15 VGA Analog/Component Input		
Subject:	Elmo HV-110XG Document Camera and Projector Compatibility		

This bulletin was created to inform you of an operational issue with the Elmo HV-110XG Document Camera when initially connected to an Epson projector.

Problem:

When attempting to use the Elmo HV-110XG Document Camera connected via the VGA HD15 connection to display content from its document bed. When connected to the projector, the projector displays only the **Blue Screen - No Signal** message and will blink off and on or display just the Blue Screen - No Signal message. When a computer is connected to the Elmo HV-110XG Document Camera and switched to Pass-Through mode, the computer image is displayed correctly by the projector. When switching back to the document table source of the Elmo HV-110XG Document Camera, the problem returns. The Elmo HV-110XG Document Camera puts out a Progressive Scan 20fps signal to the projector's VGA Analog port. This signal is detected at 15 kHz Vertical and 291.8 kHz Horizontal frequencies which are beyond projector sync specifications.

Solution:

With the Elmo HV-110XG Document Camera powered on and connected to the projector via the VGA computer cable, access the **Computer1/Computer2** setting in the projector menu system and select the **Component** setting within the appropriate connection. This will allow the Elmo HV-110XG Document Camera and projector to sync and the projector to display the image of the document camera bed and its contents. However, the image will have a pink cast. To eliminate the pink cast, change the projector setting from Component to **RGB** then to **Auto** and exit from the menu. The projected image will now look normal. This will now allow the Elmo HV-110XG Document Camera to sync and display the image properly to any other connected Epson projector without having to change the projector settings.

EPSON PRODUCT SUPPORT BULLETIN

Date:	04/20/2006	Originator:	AP
PSB #:	PSB.2006.04.002	Authorization:	Kps
Reference:	TI 05-95e Rev. A	Total Pages:	1
Product(s):	PowerLite 735c / 737c / 745c / 755c / 765c / 835p / 7850p		
Subject:	Animation converter issue found with EMP SlideMaker2 version 1.12		

This bulletin was created to inform users of the EMP SlideMaker2 version 1.12 software of a problem converting certain animations from Microsoft PowerPoint into a Scenario file.

Details:

In the previous EMP SlideMaker2 version 1.11, certain PowerPoint animations were supported in the Scenario files which are created by EMP SlideMaker2. Table 1 shows the list of animations supported in EMP SlideMaker2 version 1.11:

Table 1

- Fly	- Blinds	- Box	- Checkerboard
- Crawl	- Dissolve	- Peek	- Random Bars
- Spiral	- Split	- Stretch	- Strips
- Swivel	- Wipe	- Zoom	

Table 2 shows the list of animations from Table 1 that will not be ported from PowerPoint into the Scenario file by EMP SlideMaker2 version 1.12:

Table 2

- Crawl	- Peek
- Spiral	- Stretch
- Swivel	- Zoom

Countermeasure:

If it is necessary to use these animations in the Scenario files, use EMP SlideMaker2 version 1.11. Versions of EMP SlideMaker2 subsequent to version 1.12 are expected to incorporate the animations shown in Table 1 above.

EMP SlideMaker2 version 1.11 may be downloaded at www.epson.com. Download epon10855.exe to get this version of the software.

If it is not necessary to use these animations listed in Table 2 above, continue to use the EMP SlideMaker2 version 1.12. Download epon11217.exe at www.epson.com for EMP SlideMaker2 version 1.12.

EPSON Product Support Bulletin

Date:	05/11/2005	Originator:	JAM
PSB #:	PSB.2005.05.007	Authorization:	<i>Kps</i>
Reference:	N/A	Total Pages:	16
Product(s):	Epson NS Connect Version 1.40		
Subject:	1400 x 1050 DVI Compatibility Support		

Reason:

This bulletin is to inform you of the testing results Epson NS Connect (version 1.40) and the Dell Latitude D600 Laptop.

Question:

Has Epson NS Connect been tested for compatibility with the Dell Latitude D600 Laptop?

Answer:

Yes, Epson NS Connect (Version 1.31 and 1.40 for PC) has been tested and found compatible on Windows XP with Service Pack 2. The wireless connection modes tested were peer-to-peer (Adhoc) and through an access point (Infrastructure). NS Connect version 1.31 is intended for and bundled with the Epson PowerLite 745c projector. NS Connect version 1.40 is intended for and bundled with the Epson PowerLite 765c projector. Detailed information listed below:

Software tested:

System Version: Windows XP Service Pack 2
NS Connect: Version 1.31
NS Connect: Version 1.40

Hardware tested:

Computer: Dell Latitude Laptop
Model: D600
S/N: CN-0D2125-48643-51T-4805

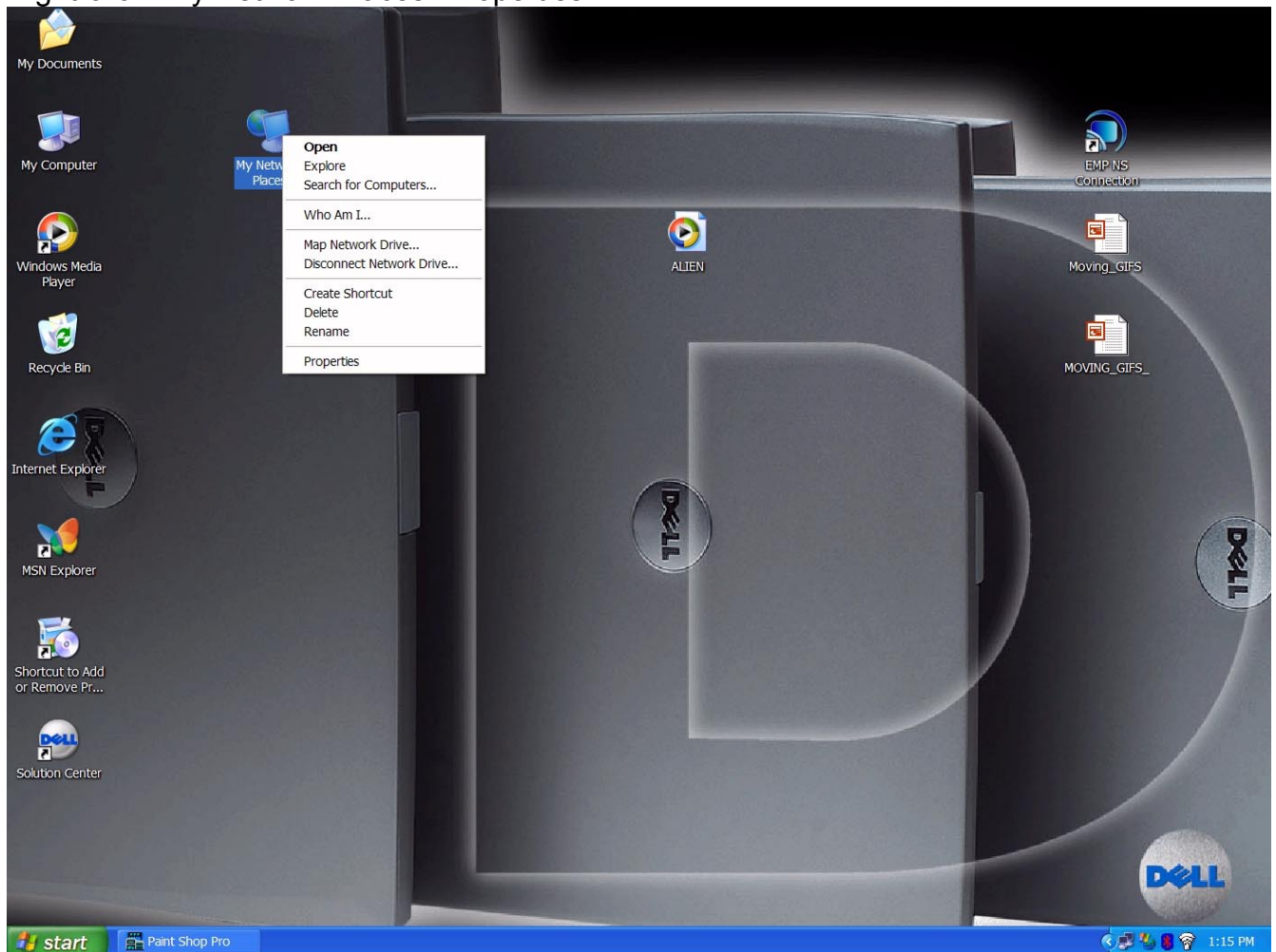
System Pre-requisites:

System must have all Windows Wireless components installed and operational.

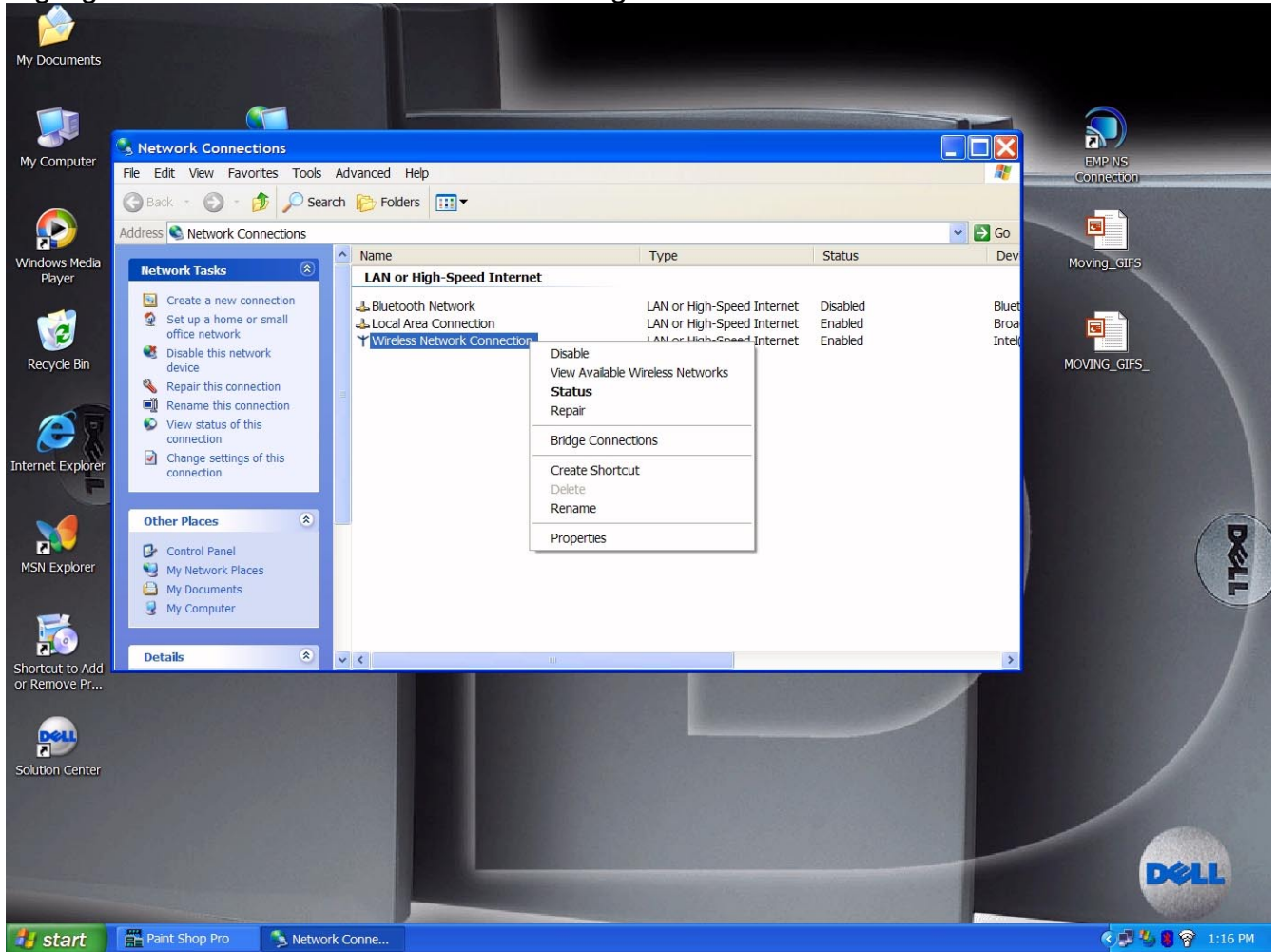
Very Important Items To Check:

1. Check the Wireless channel and B/G Mode settings.
2. Wireless control – Configure the wireless settings with Windows and not with a wireless software utility. (Usually active on the lower right taskbar)
3. Verify connection mode AdHoc or Infrastructure
4. Search and connect to the target wireless device / verify Open/Shared and WEP settings
5. Verify communication reception... packets received/sent.
6. Install and start NS Connect and choose the “correct” adapter for controlling the projector.

1. Right-click "My Network Places" Properties



Highlight "Wireless Network Connection" - Right-click

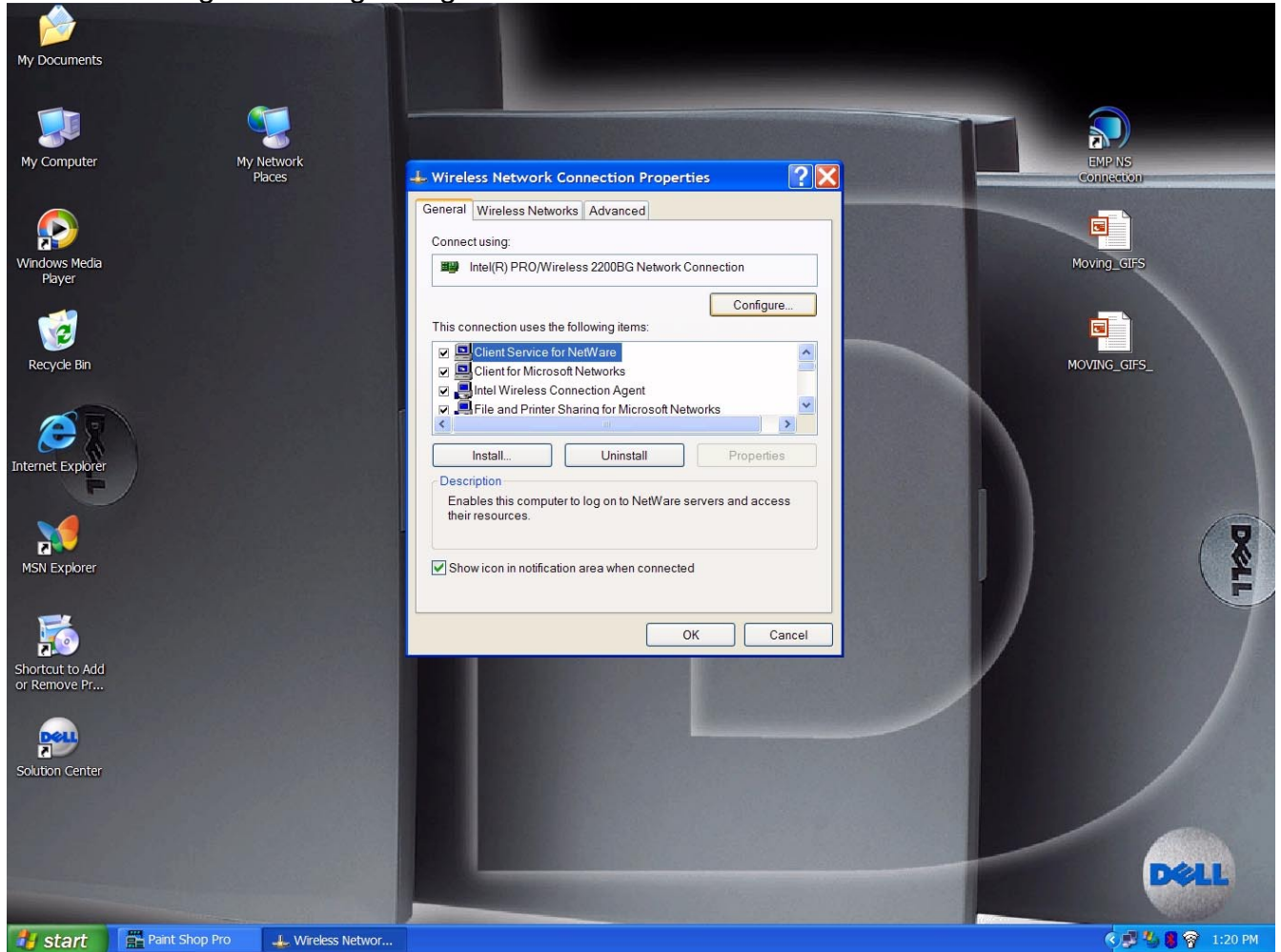


Click the "General" tab

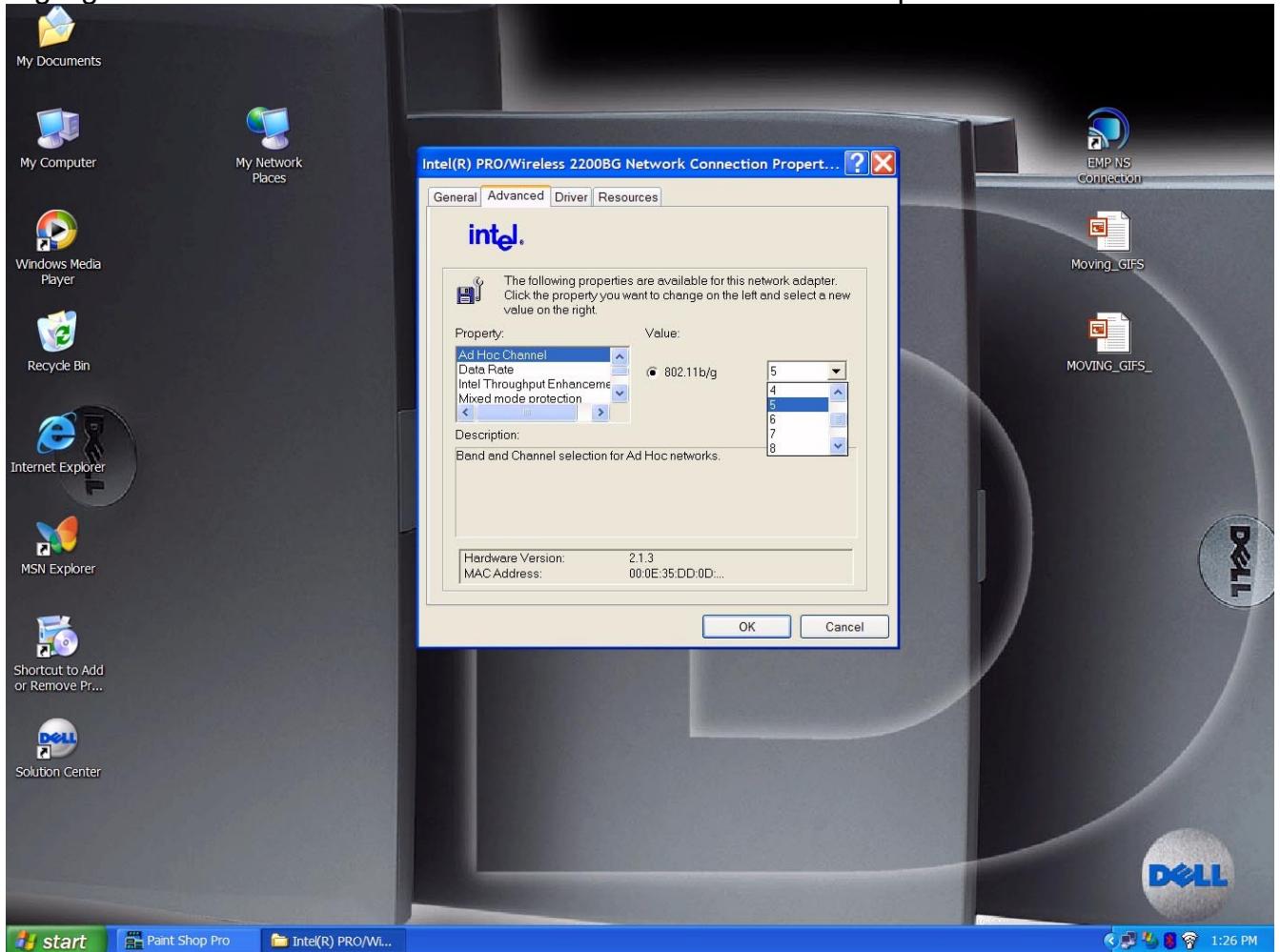
Click the Wireless Network Connection Properties Screen

Connect using "Intel(R) Wireless 2200BG Network Connection – Click the "Configure" button.*

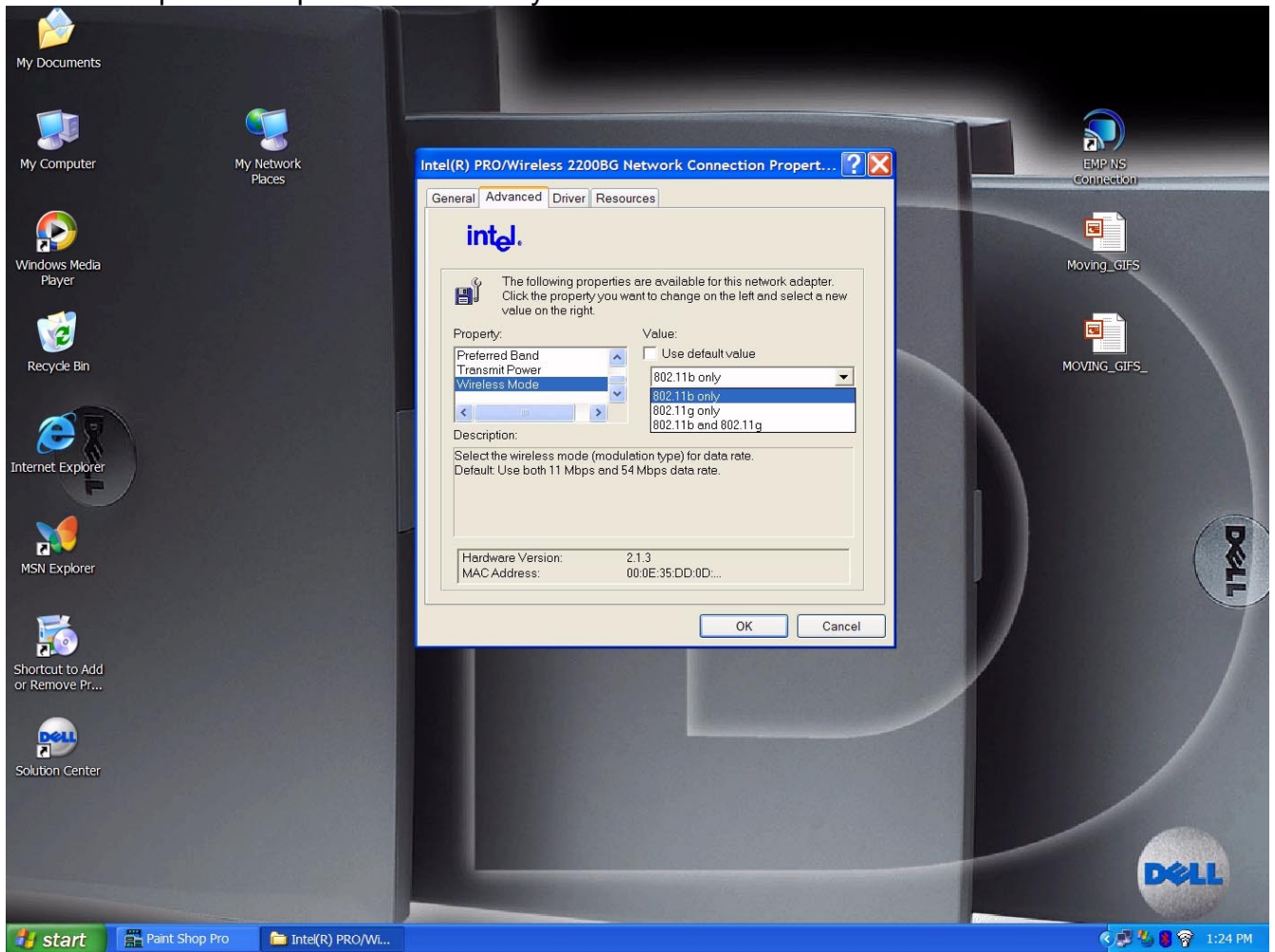
*Click the "Configure" button for the wireless adapter installed in the computer on which the wireless settings are being configured.



On the next GUI screen - Click the "Advanced" tab - In the "Property" Pull-Down Highlight/Pick "AdHoc Channel" and for "Value" on the Pull-Down pick channel "5"



In the "Property" pull-down menu:
Highlight/Pick "Wireless Mode" and for "Value" remove the check for "Use default value"
and on the pull-down pick "802.11b only". Then click the "OK" button to close.



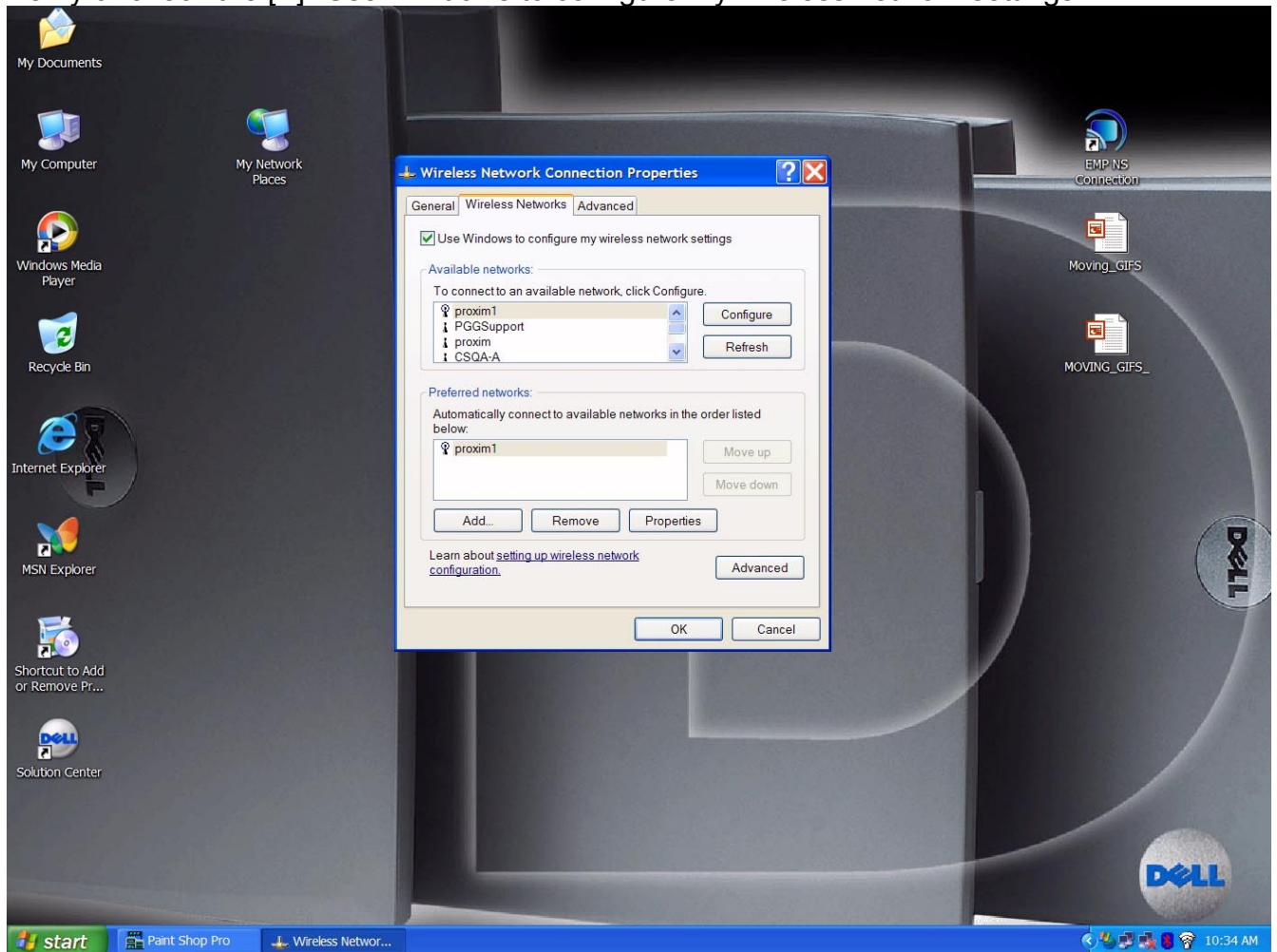
2.

Right-click "My Network Places" and choose Properties

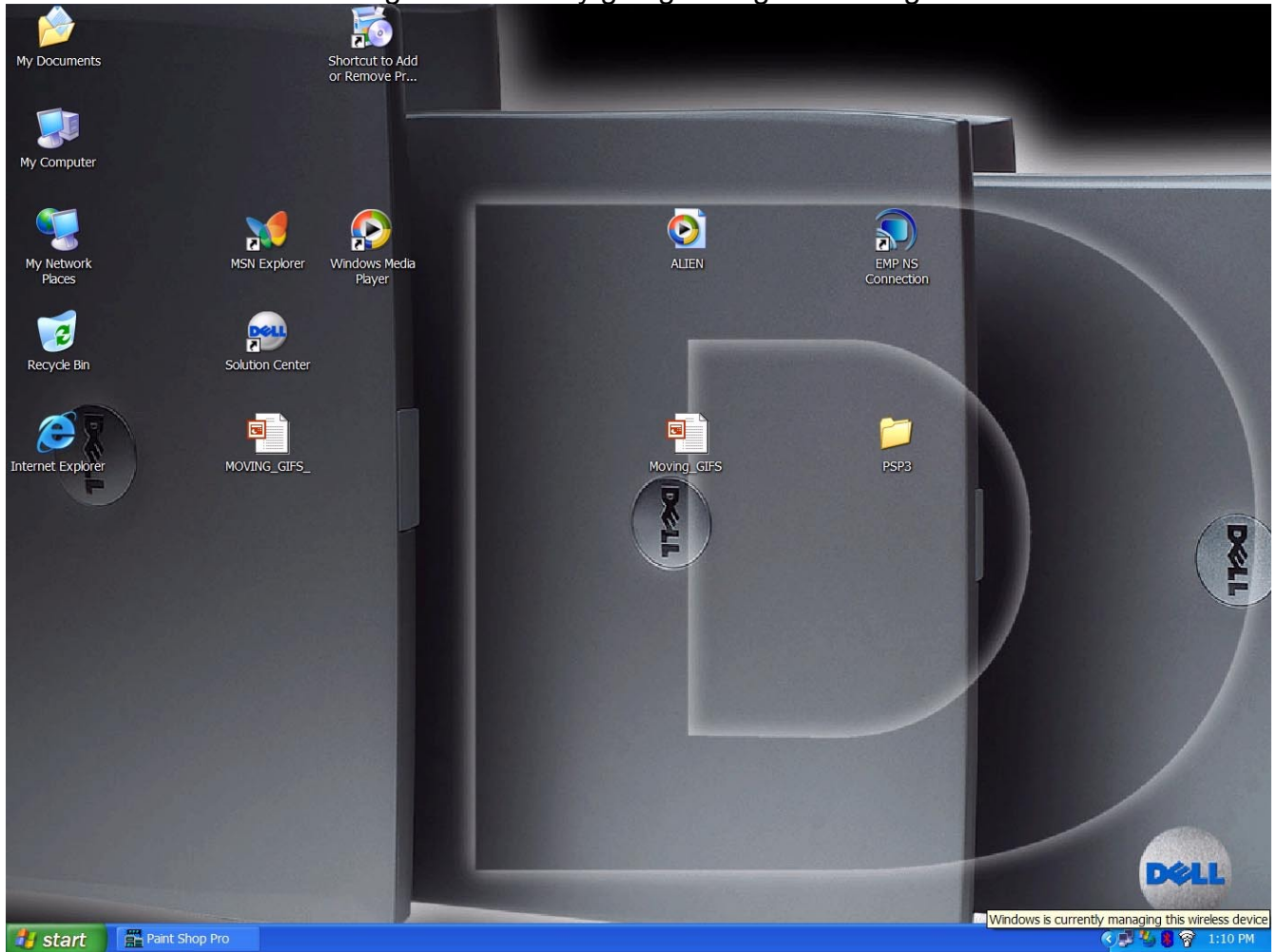
Highlight "Wireless Network Connection" - Right-click

Click on the "Wireless Networks" tab

Verify or check the [X] "Use Windows to configure my wireless network settings"



If un-checked, check and click on [OK] button on the bottom of the GUI
Double-check that the setting took effect by going through item 2 again.



3.

Right-click "My Network Places"

Properties

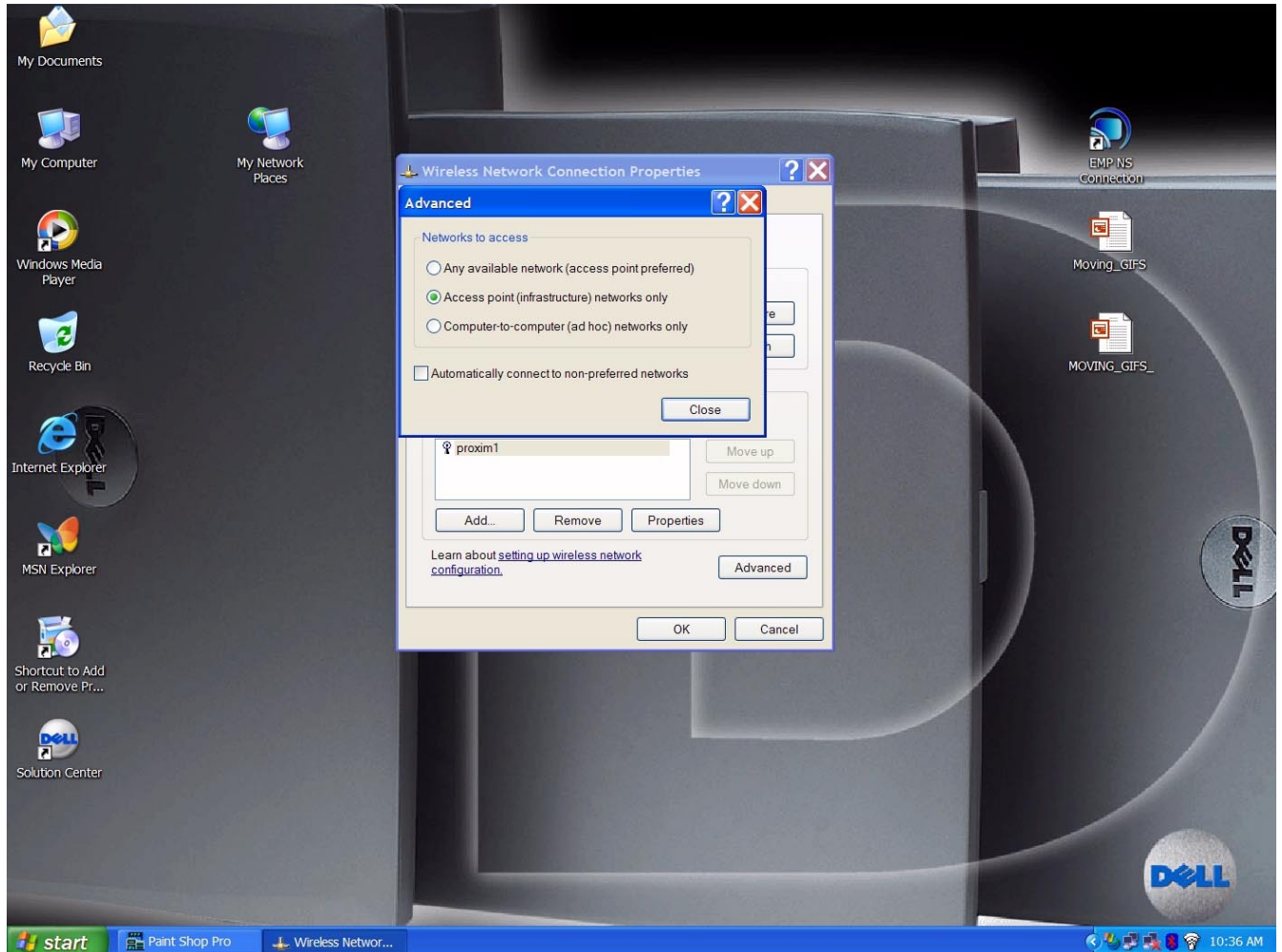
Highlight "Wireless Network Connection" - Right-click

Click on the "Wireless Networks" tab

On the bottom lower right of the GUI, click on the [Advanced] button

In the "Advanced" screen select the mode of operation

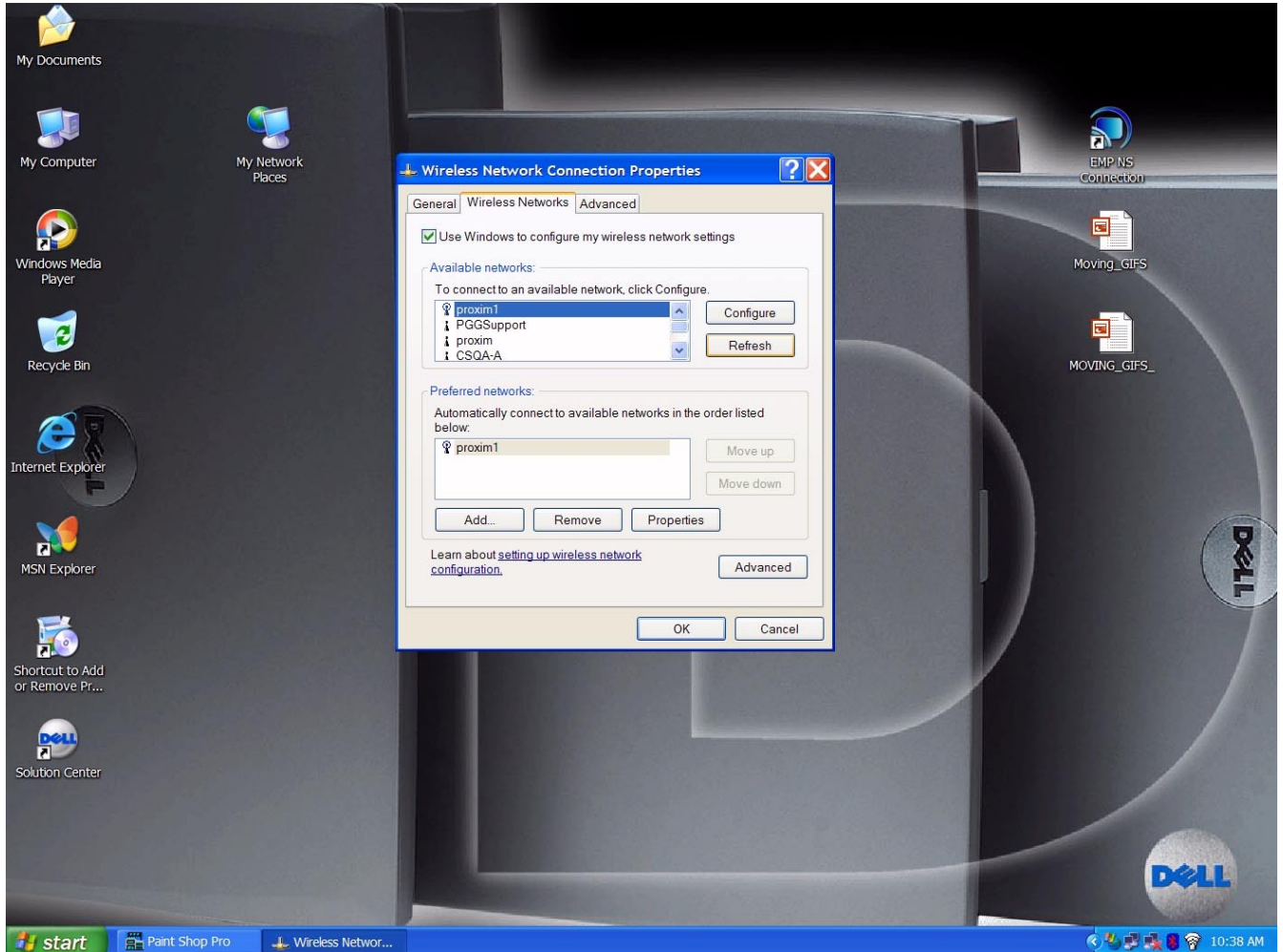
Click "Access Point" and click the "Close" button



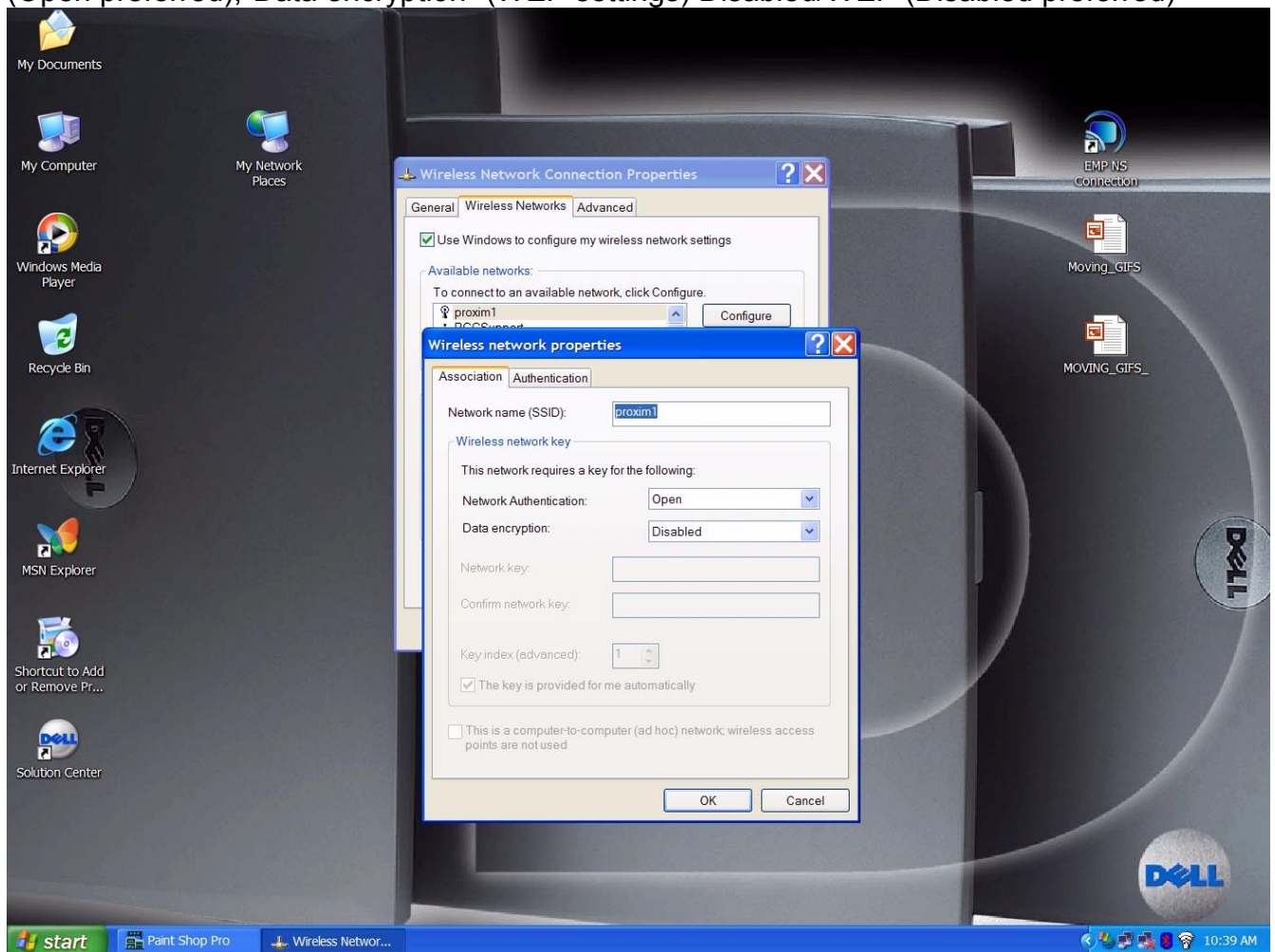
4.

"Wireless Networks" tab still visible

On the "Available networks" box... you should see the wireless devices in the pull-down screen. To the right of that section there are 2 boxes [Configure] or [Refresh]
If your wireless device is not seen, click "Refresh"...the device should appear in 1-2 minutes.



Highlight the access point (proxim1 in this example) and click configure.
Example verify SSID name (proxim1 in this example), "Network Authentication" Open/Shared (Open preferred), "Data encryption" (WEP settings) Disabled/WEP (Disabled preferred)



Change as necessary and click the [OK] button. "Wireless Networks" tab still visible
Click the [OK] button... the system should connect in 1-2 minutes.

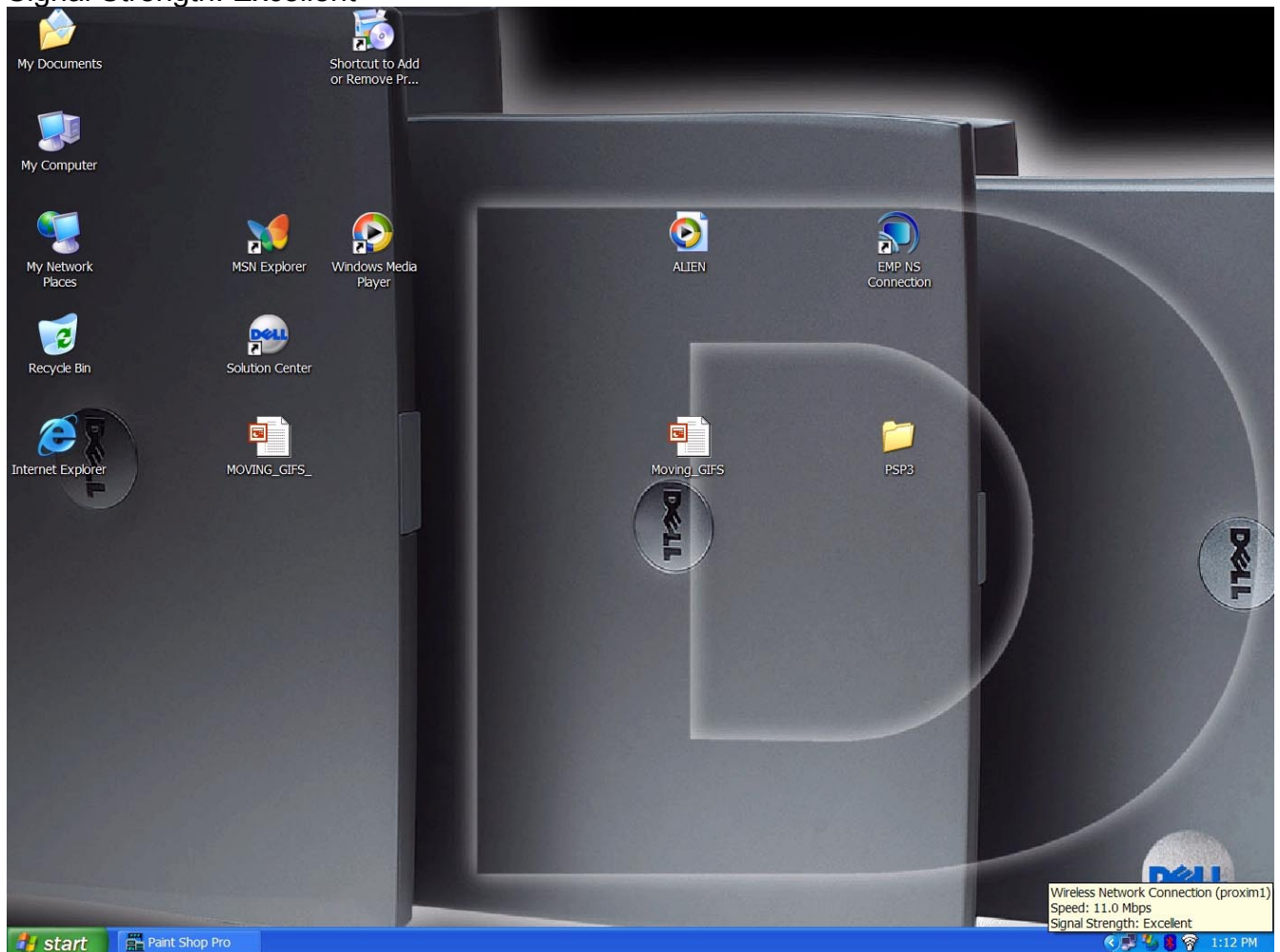
5.

On the taskbar, move the mouse cursor over the wireless network icon (2 monitor screens overlapping). The following information should appear:

Wireless Connection Network (proxim1 in this example)

Speed: 11.0 Mbps

Signal Strength: Excellent

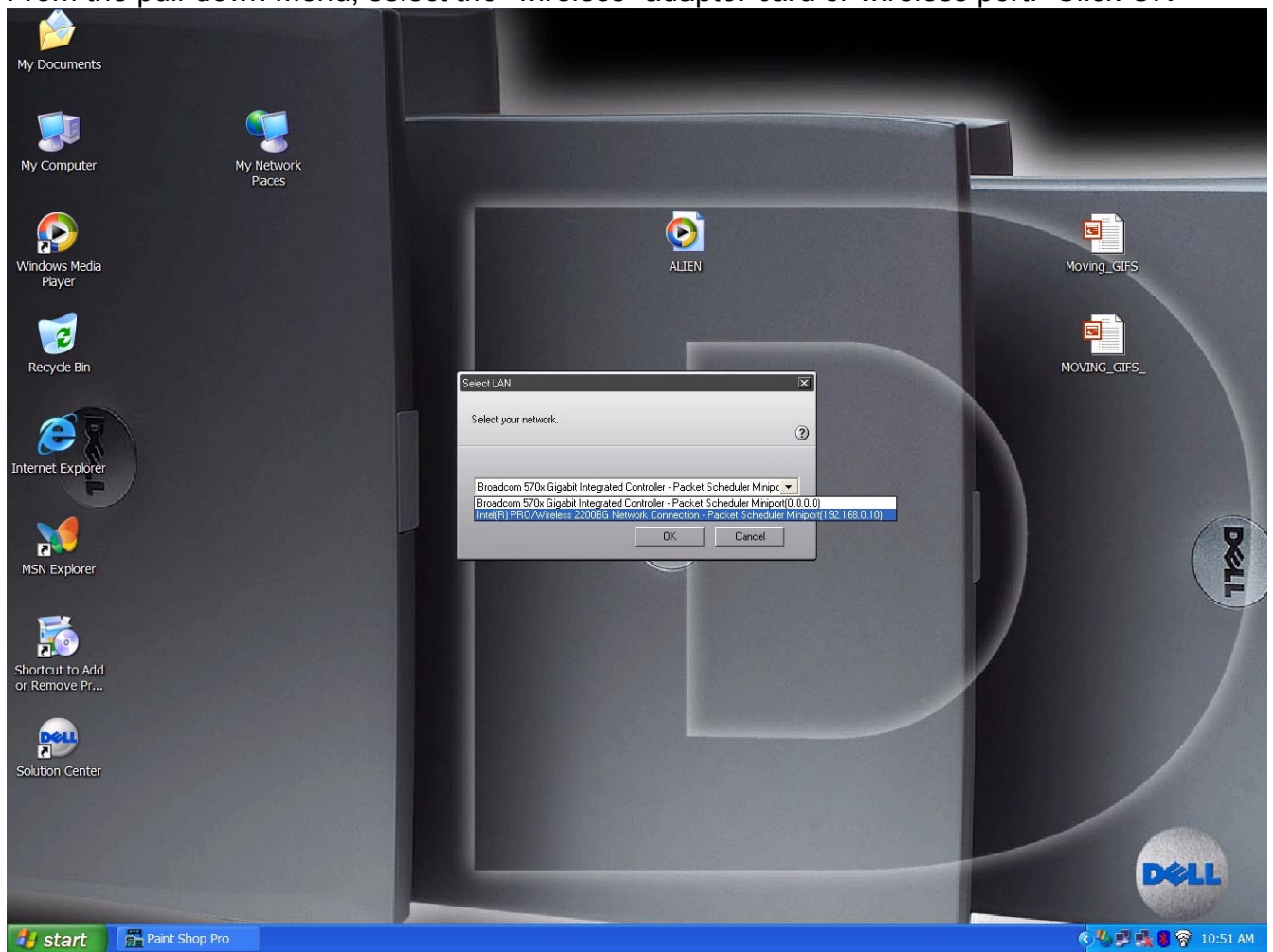


Right-click to open the wireless properties and verify good transmission and reception of wireless packets.

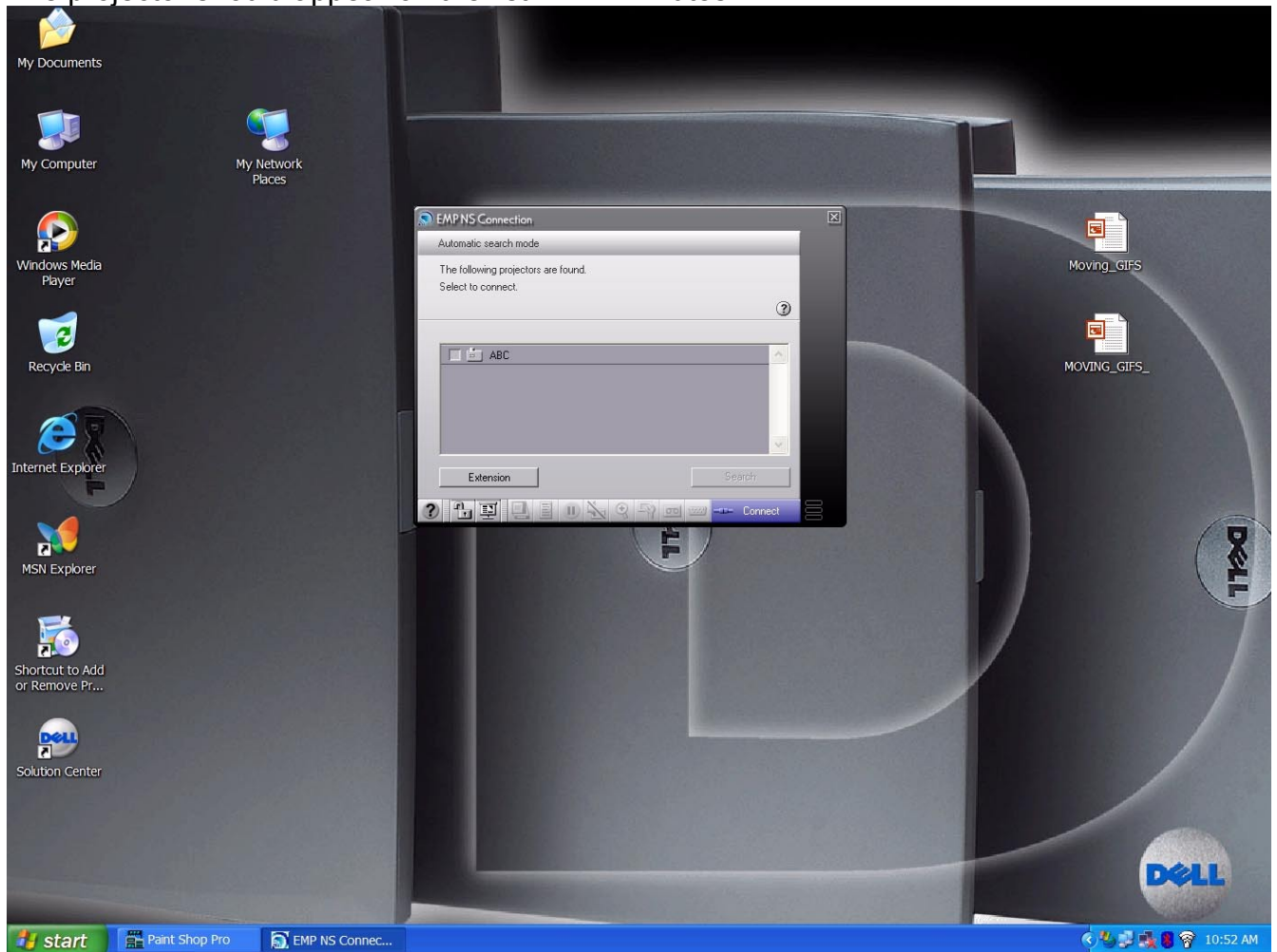
6.

Start NS connect

From the pull-down Menu, select the “wireless” adapter card or wireless port. Click OK

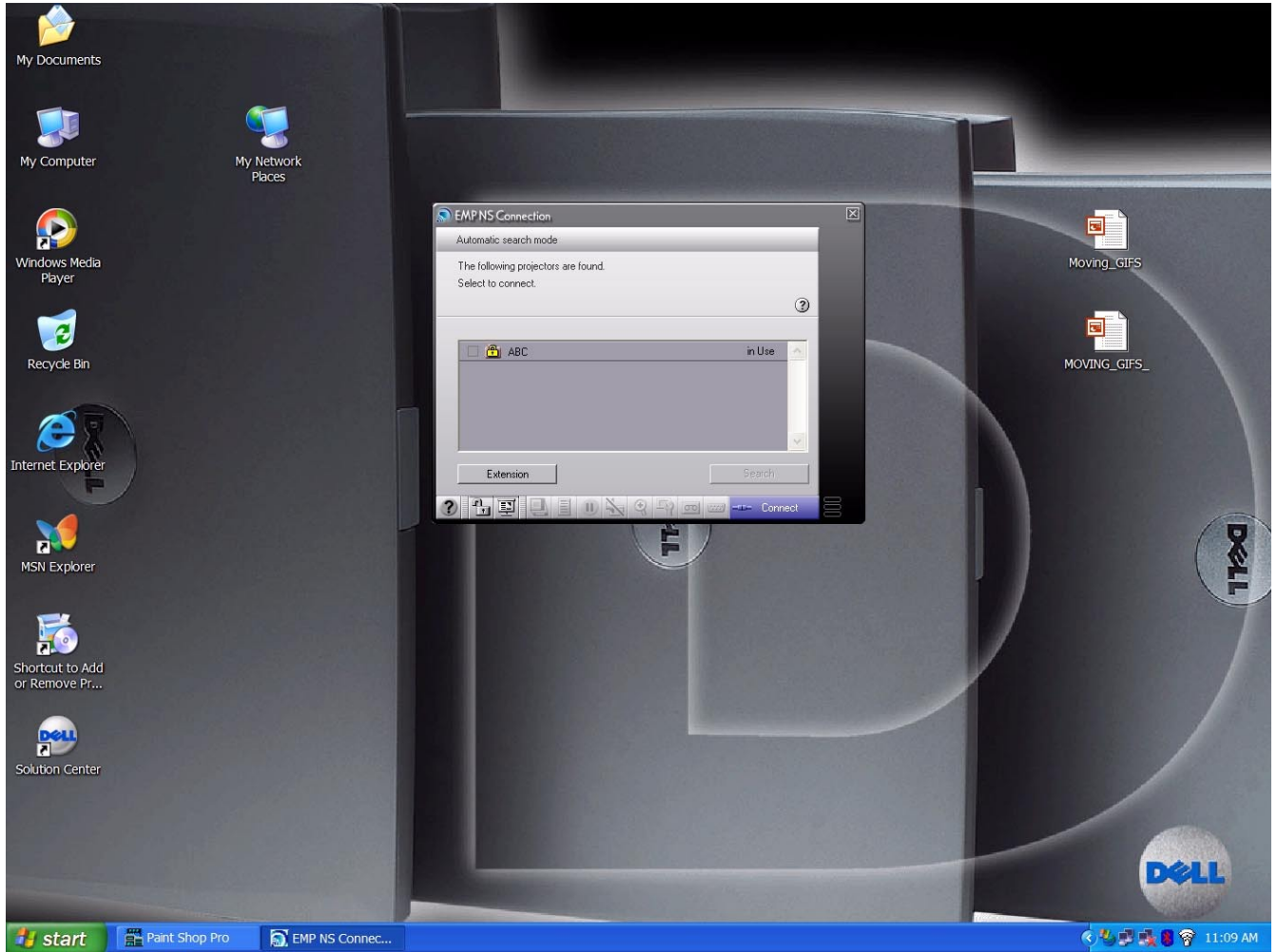


The projector should appear on the list in 1-2 minutes.

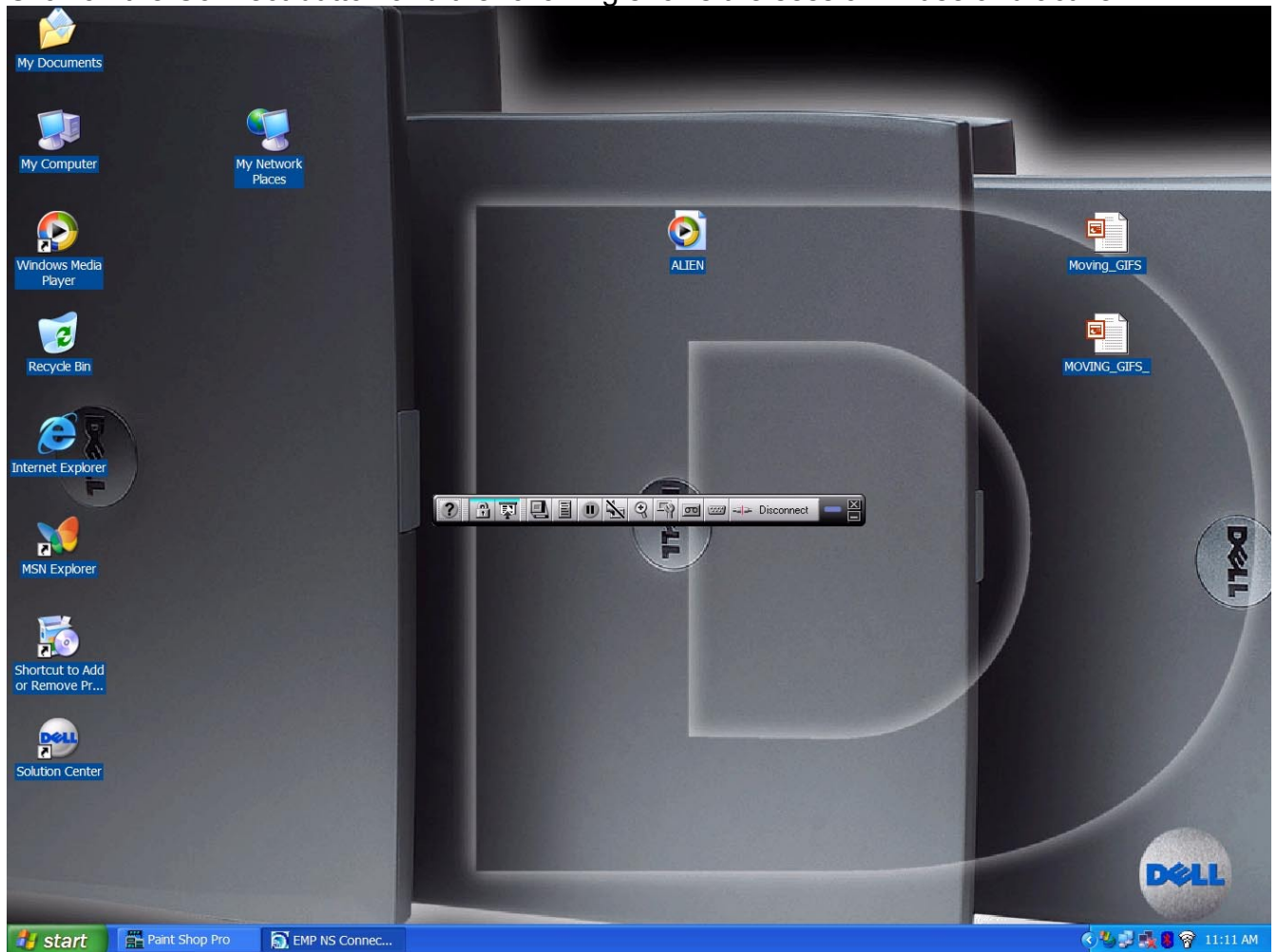


Highlight the projector, check [X] the projector name box.

Click on the 'Lock' and "Presentation mode" icons to enable them.



Click on the Connect button and the following shows the session in use and active.



Follow the NS Connect instructions on how to control the projector and change the projector settings.