

EPSON PRODUCT SUPPORT BULLETIN

Date: 06/10/2009
TIB #: PSB.2009.06.002
Reference: TI 09-08j Rev. A
Product(s): PowerLite 735c / 737c / 745c / 755c / 765c / 835p / 1705/1715/1815/1825/7850p / 8300 with EasyMP.net option, Pro G5150/G5350 / 1725 / 1735W / 85 / 825 / 826W
Subject: Release of EMP NS Connection for Windows & Mac Upgrade from v2.50 to v2.51

Originator: DS
Authorization: *Kps*
Total Pages: 8

This bulletin was created to inform you of the release of the new version 2.51 of the EMP NS Connection software.

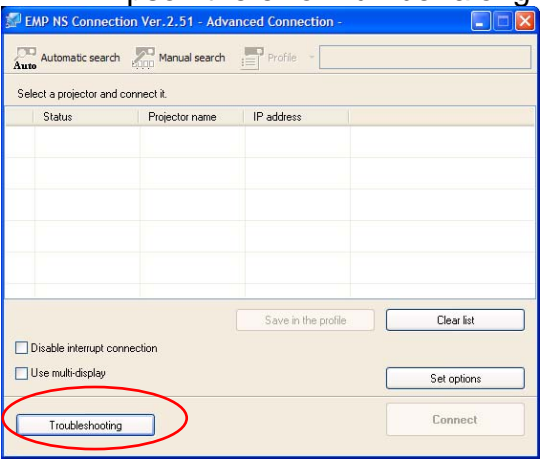
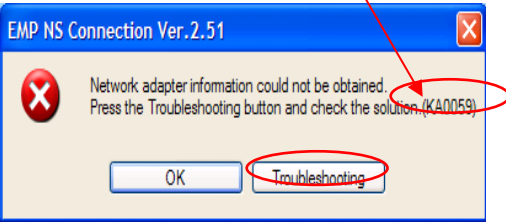
Description of Change:

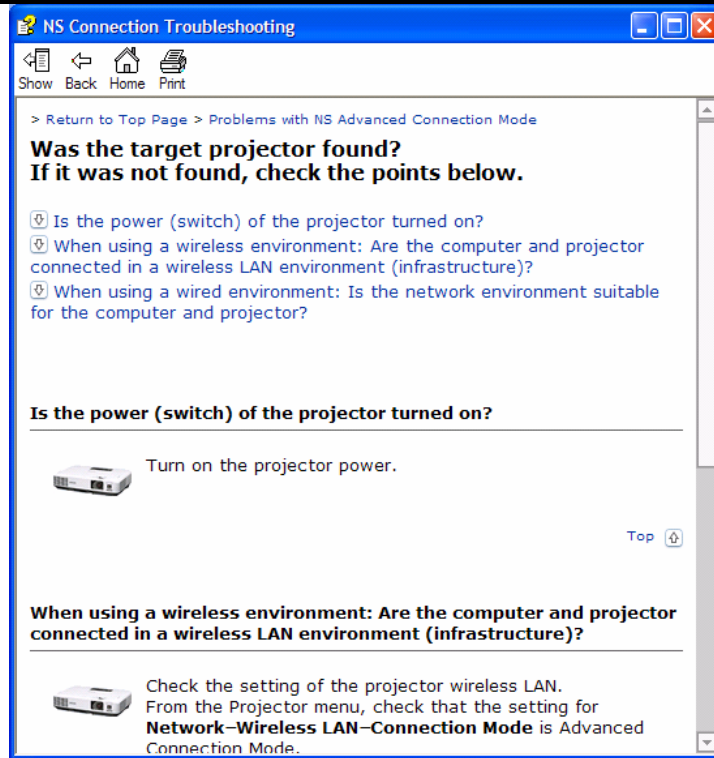
Improvements have been made to the EMP NS Connection utility.

Reason:

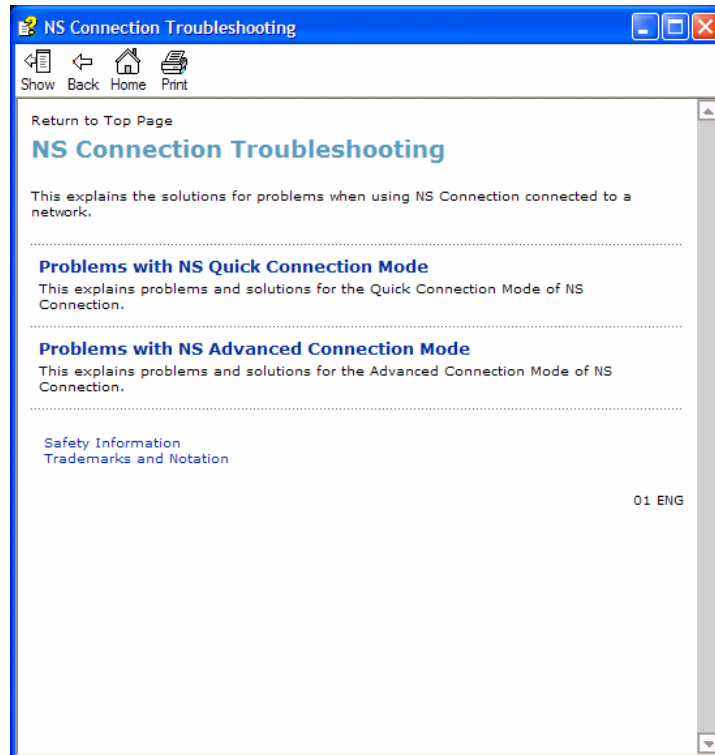
The improvements to NS Connection V2.51 are as follows

Improvements (V2.50 (V2.51

Improvements	<ul style="list-style-type: none">■ Addition of 10 new languages: Arabic, Ukrainian, Romanian, Indonesian, Croat, Slovak, Bulgarian, Malay, Vietnamese and Hebrew.■ Addition of troubleshooting function (Windows Only) When pressing the troubleshooting button, the corresponding troubleshooting and error number is displayed in the error message window.<ul style="list-style-type: none">• When experiencing problems with NS Connect, please report to Epson the error number along with the failure information.  
--------------	--



Also you can access troubleshooting by clicking **Start → All programs → EPSON Projector → EMP NS Connection → EMP NS Connection V2.51 Troubleshooting.**



- Fixed error message displayed by the NVIDIA utility

Failure Symptom

When starting Quick Wireless/USB Display/NS Connection on a PC with the built-in NVIDIA graphics chip (ex. ThinkPadT61 NVIDIA Quadro NVS 140M/NVIDIA Quadro FX 570M Display Driver), the NVIDIA utility displays consecutive error messages. As a result, some PCs will experience a lock-up.

Countermeasure

Hardware acceleration level is set to 3 when Quick Wireless/USB Display/NS Connection are being used.

Limitation

By setting hardware acceleration level to “3”, the mouse cursor flickers more visibly than the setting of “None”. This symptom can be avoided by unchecking the box for **Transfer Layered Window** on the Adjustment performance tab in the **Set Options** window of NS Connection.

Note: When NS connection is being used, and the hardware acceleration setting is changed manually, at next startup, NS connection starts with the same setting level of hardware acceleration.

Limitation

All Operating Systems

- When using EAP type of security that consumes a lot of CPU resources, projectors may disconnect from NS connection. The solution is to click Set Options of NS Connection and set Adjust Performance to Fast.
- It takes more time for the PowerLite 1725 / 1735W / 1825 / Pro G5150 / Pro G5350 projectors to disconnect from NS connection as compared to the PowerLite 1705 / 1715 / 1815 projectors, due to the limitation of the new OS (WindowsCE) on IM-X4 projectors.
- To avoid conflicts between the Quick Wireless and other makers' utilities, when the Quick Wireless starts, this version stops services of the other utilities listed in the attached file (Exhibit 1). When quitting Quick Wireless, the other utilities resume their services.
- In the network environment using IEEE 802.11 b/g standards, the wireless connection may drop under the following conditions. Due to specification of wireless controllers, some wireless controllers don't send their beacon periodically. Even if a projector is connected to a PC via wireless, if the projector doesn't detect the beacon for 11b signal for a certain period (30 – 60 seconds) from the PC, the projector judges that there isn't any PC using the 11b signal in the network and switches to communication with 11g (default) signal. On the other hand the PC still tries to communicate with 11b. As a result, the wireless connection between the projector and the PC drops.

Solutions to this problem:

- a. Establish a wireless communication between the PC and projector via 802.11a signal.

Windows OS

- **Due to a limitation of the module VLC for the Movie Sending mode of the IM-X4 version projectors, when IM-X4 projectors display MPEG2 and WMV images in Movie Sending mode via NSC V2.40, fast-forward and rewind functions cannot be used. When IM-X3 projectors display MPEG2 via NSC V2.40, fast-forward and rewind functions can be used.**

Windows Vista OS

- Multi screen display function cannot be used
- Virtual display driver cannot be installed in PC.
- When UAC (User Account Controls) screen is being displayed, the projected image pauses.
- The Motion picture of Windows photo gallery cannot be projected in full-screen mode.
- Still images and motion pictures from Windows Media Center cannot be projected in full-screen mode.
- Since NS Connection can capture Layered windows, the tool bar of NS Connection is projected.
-
-
- When projecting images via NS Connection, mouse cursor might blink depending on PC specification.

	<p>Macintosh OS</p> <p>In case of uninstalling NSC V2.20 or later version, it is possible to uninstall by following 2 methods.</p> <ul style="list-style-type: none"> - Delete by installer exclusively for NSC version which you want to uninstall. <p>For example, when you want to uninstall NSC V2.40, you need to use installer for NSC V2.40. NSC V2.20 and later version can not be uninstalled automatically by different version installer.</p> <ul style="list-style-type: none"> - Delete manually.
--	---

System Requirements:

OS	Windows 2000 SP4/ XP Home Edition/ XP Professional(32bit) /Vista SP1 Home Basic / Home / Premium / Ultimate / Business / Enterprise(32bit) Mac OS X 10.3 minimum, OS 10.3.9/10.4.5/10.5.1 recommended
CPU	Windows: Mobile Pentium III 1.2GHz at least (Pentium M1.6GHz at least recommended) Mac: Power PC G3 900MHz at least recommended
Memory	At least 256MB (At least 512MB recommended)
Available hard disk space	At least 20MB
Display	Minimum- VGA(640x480), Maximum- UXGA (1600 x 1200) 16-bit color or more

Obtaining the Update:

Download epon13123.exe from www.epson.com to the version 2.50 update for NS Connection.

The files are extracted and copied to C:\EPSON\epson13123_EMP_NS_Connection_251. The user should be directed to this folder to find the bulletin. The program will automatically install after the download file is extracted.

Note: on the Mac, the extraction process copies the epon13124_EMP_NS_Connection_251 folder to the desktop. The program and bulletin are inside this folder. The user will double-click on NSCv2.51_Installer to start the installation process.

Software Upgrade History:

Version	Release date	Remarks
1.00	December 25, 2002	New release
1.10	January 1, 2003	Release for PowerLite 7850p
1.20	September 10,	Improved the transfer rate specification for PowerPoint

	2003	images
1.30	May 31, 2004	Support added for WPA and LEAP
1.31	June 18, 2004	Improved screen problem issue
1.32	January 18, 2004	Improved the internal function of connecting to the projector
1.40	April 1, 2005	<ul style="list-style-type: none"> • Addition of Presentation Mode and Interruption Prevention function • Able to present with video set for 32 bit color • Function improvement with Excel and PowerPoint • Improved ESSID search lockup prevention when certain LAN adapters and drivers are used
2.00	2006/06/20	<ul style="list-style-type: none"> • Addition of multi screen display function • Addition of movie sending mode • - Improvement of connection and usability
2.10	2006/12/08	<ul style="list-style-type: none"> • Improvement in the ability to search projectors by Automatic Search. (For Windows) • Improvement in the operability of choosing projector. • Improvement in operability and visibility of "Connect" button. • Preventing Virtual Display from being used as primary display. • Improvement in the ability of image processing speed. (For Mac) • - Change the packet size for a connection request command used by Quick connection.
2.20	2006/05/29	EMP NS Connection V2.20 supports Windows Vista (Home Basic /Home Premium/Ultimate/Business/Enterprise).
2.30	Nov. 27, 2007	<ul style="list-style-type: none"> • Supported picture transfer for EMP-1825 • Improved wireless search and connection abilities. • - Added video format supporting movie sending mode
2.40	Mar. 24, 2008	<ul style="list-style-type: none"> • EMP NS Connection V2.40 supports Windows Vista Service Pack 1 • - Supports 24 languages
2.50	Jun.2,2008	Supported image transfer and virtual display of 1280 x 768 <ul style="list-style-type: none"> • Changed the operation method to prevent NS connection from being blocked by Windows Firewall Added another wireless LAN utility that NS connection supports
2.51	Feb.9,2009	<ul style="list-style-type: none"> - Addition of supported models (PowerLite-85/825/826W) - Addition of supported languages - Addition of troubleshooting function (Only for Windows)

[Exhibit 1] Wireless LAN client list that NSC V2.30 and V2.40 stops their service process

	Manufacturer Name	Adapter Name	Wireless LAN Utility Name
Supported by V2.30	D-Link	Air Plus XTREMEG DWL-G650	D-Link AirPlus XtremeG Utility (CD)
	NETGEAR	WN511T	Smart Wireless Utility Ver.1.1.5.9(CD)
	BUFFALO	Buffalo all products	Client Manager 3 Ver.1.2.10(Web)
	IBM	ThinkPad products	Access Connection(Web) *1 Ver.4 or later
	IBM	ThinkPad products	Access Connection(Web) *1 Ver.3.71
	Logitec	Logitec LAN-WAG/U2 Wireless LAN Adapter	Logitec Wireless LAN Client Utility
	Linksys	Wireless-G Notebook Adapter v.5.0	WPC54G-JP setting utility
	NETGEAR	WG511AJP	NETGEAR WG511A Smart Wizard Ver3.2.3.306
	NETGEAR	WGM511	NETGEAR SMART WIZARD -Wireless Assistant WGM511 Ver 1.0.0.7
	NETGEAR	WPNT511	NETGEAR WPNT511 SMART WIZARD Ver1.1.3.0
	Linksys	WPC300N	Wireless-N Notebook Adapter Wireless Network Monitor v1.05
	Linksys	WPC54G	Wireless-G Notebook Adapter Wireless Network Monitor Ver 3.1
	Linksys	WPC54GX4	Wireless-G Notebook Adapter with SRX400 Setup Wizard V1.1
	Linksys	WUSB54GP	Wireless-G Portable USB Adapter WLAN Monitor v1.05
	Linksys	WUSBF54G	Wireless-G USB Adapter with Wi-Fi Finder
	NETGEAR	WG511 v2	

	Linksys	WPC54GX	Wireless-G Notebook Adapter With SRX Wireless Network Monitor v. 1.2
Supported by V2.40	Linksys	WUSB54GSC	Compact Wireless-G USB Adapter Wireless Network Monitor v1.05
Supported by Quick Wireless Connection V.1.00 / NSC V2.50	Atheros		Atheros Client Utility
Supported by Quick Wireless Connection v1.02 / NSCv2.51	Broadcom	BCM4311 / BCM2050	Broadcom Wireless Utility
	NETGEAR	WN511B	NETGEAR WN511B Smart Wizard Utility
	NETGEAR	WG111v3	NETGEAR WG111v3 Smart Wizard Utility
	NETGEAR	wn111	NETGEAR WN111 Smart Wizard Utility
	NETGEAR	WUSB600N	Linksys Wireless Network Monitor
	PLANEX	GW-US300MiniW	PCI GW-US300MiniW Utility

*1: Because Access Connection service stops, power display of Power Manager becomes invalid.

EPSON PRODUCT SUPPORT BULLETIN

Date:	04/20/2009	Originator:	JAM
PSB #:	PSB.2009.06.001	Authorization:	<i>Kas</i>
Reference:	TI 09-05e Rev. A/B	Total Pages:	5
Product(s):	PowerLite 735c / Cinema 500 / 737c / 745c / 755c / 765c / 830p / 835p / 1705c / 1715c / 6100i / 6110i / 7800p / 7850p / 7900NL / 8300i / 8300i with EasyMP.net module / 9300NL / 1815p / 1825 / 822p / 83c / 822+ / 83+ / G5000 / Pro G5150 / Pro G5350 / Pro G5200W / 1725 / 1735W / 400W / 410W / 84 / 85 / 825 / 826W PowerLite 61p / 81p / 82c / 821p / 1810 / 260d (Latin America) / 280d (Latin America) with TCP/IP to Serial converter		
Subject:	Release of EMP Monitor for Windows version 4.30		

This bulletin was created to inform you of the release of the new version 4.30 of the Epson EMP Monitor software utility.

Description of Change:

Improvements have been made to the EMP Monitor software utility.

Note: For the PowerLite 61p / 81p / 82c / 821p / 1810 / 260d (Latin America) / 280d (Latin America) models, a serial to TCP/IP conversion adapter is necessary. The function of Auto Update does not work for these models. You need to manually click on refresh to get an updated status of projectors.

Reason:

The improved points of version 4.30 are as follows:

Application	EMP Monitor
Version upgraded	Version 4.22 → Version 4.30
Improved points	(1) Addition of 7 new languages - Indonesian, Croat, Slovak, Bulgarian, Malay, Vietnamese, and Hebrew Existing 27 languages - Chinese (Traditional), Netherlands, Danish, Polish, Hungarian, Czech, Romanian, Slovene, Norwegian, Swedish, Finnish, Russian, Ukrainian, Greek, Turkish, Arabic (Windows NT4 does not support), English, Japanese, French, German, Italy, Spanish, Portuguese, Chinese (Simplified), Korean, Catalan, Thai

(2) Addition of Input Source (Only PowerLite 84 / 85 / 825 / 826W)
Previous version of EMP Monitor included USB Display, USB and LAN as one source: EasyMP.

The input source buttons for USB display, USB, and LAN are available as separate input sources as shown below:

- Old version - EMP Monitor V4.22

EMP Monitor V4.22



- New version - EMP Monitor V4.30

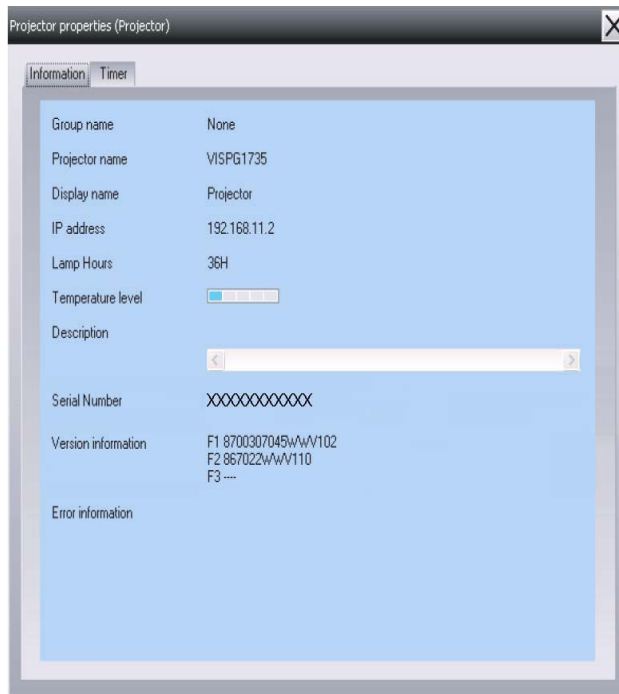
EMP Monitor V4.30



(3) New feature for the PowerLite 84 / 85 / 825 / 826W.

Displays projector's serial number in the Menu settings

- The projector's serial number is now displayed in the projector's menu under "info",
- EMP Monitor can also display the projector's serial number as shown below:



Limitations	When the PowerLite1725 / 1735W exhibit a Lamp Cover Open error state, EMP Monitor cannot detect the error. The reason is that when the lamp cover is opened, the primary power source that reports the error state to EMP Monitor is turned off immediately. This is different from other models which make the secondary power source turn off under the same condition.
--------------------	---

Note: EMP Monitor Ver. 4.xx is not compatible with EMP Monitor Ver. 3.05 and earlier versions. EMP Monitor Ver. 4.xx cannot read the setting files of EMP Monitor Ver. 3.05 and earlier versions.

System Requirements:

OS	<ul style="list-style-type: none"> Windows 98 SE / Me / NT 4.0 (SP6) *Except Arabic and Hebrew / Windows 2000 Pro / XP Home Edition / XP Professional (32 bit) / Vista Home Basic / Home Premium / Ultimate / Business / Enterprise (32 bit) *Except Ukrainian / Vista SP1 Home Basic / Home Premium / Ultimate / Business / Enterprise (32 bit) Internet Explorer Ver. 5.0 or later must be installed
CPU	Minimum: Pentium MMX 166 MHz (Recommended: Pentium II 233 MHz or higher)
Memory	At least 64 MB (Recommended: 128 MB or above)

Available hard disk space	At least 50 MB
Display	SVGA (800x600) or higher resolution, 32 bit or higher display color

Obtaining the Update:

Download [epson13055.exe](http://www.epson.com) from www.epson.com to get the version 4.30 update for EMP Monitor. The files are extracted and copied to C:\EPSON\epson13055_emp_monitor_430.

This file is a self-extracting archive and will start the installation utility for EMP Monitor. Follow the on-screen instructions during the installation process.

Software Upgrade History:

Version	Release date	Remarks
3.00	December 25, 2002	Supported PowerLite 735c
3.01	February 26, 2003	Supported PowerLite 7800p / 8300i
3.02	April 18, 2003	Supported PowerLite 7850p / 8300i with EasyMP.net option module
3.03	November 21, 2003	Supported PowerLite Cinema 500
3.04	April 1, 2004	Supported Serial -TCP/IP conversion adapter for PowerLite 61p / 81p
4.01	October 18, 2004	Supported projectors that are configured on a large-scale network.
4.02	August 29, 2005	Addition of timer function and auto search function by specifying IP addresses. Improvement of communication logs size.
4.10	May 8, 2006	Addition of new functions, Improvement of usability, and Corresponding to PowerLite 6100i.
4.20	May 15, 2007	EMP NS Connection V2.20 supports Windows Vista (Home Basic / Home Premium / Ultimate / Business / Enterprise).
4.21	September 26, 2007	Supported 25 languages
4.22	March 31, 2008	Supported 27 languages Addition of new Error Information Supported Video (BNC)
4.30	April 3, 2009	Supported 34 languages Additional Input Sources Displays projector's serial number in Menu settings

EPSON PRODUCT SUPPORT BULLETIN

Date:	12/18/2008	Originator:	DS
PSB #:	PSB.2009.01.006	Authorization:	<i>Kps</i>
Reference:	TI 08-22e Rev. A/B	Total Pages:	7
Product(s):	PowerLite 735c / 737c / 745c / 755c / 765c / 835p 1705c / 1715c / 1815p / 1825p / 7850p / 8300i with EasyMP.net option Pro G5150 / Pro G5350 / 1725 / 1735W		
Subject:	Release of Check Tool for Network Projectors V1.00 (for Windows)		

This bulletin was created to inform you about the release of Epson Check Tool software for Network Projectors version 1.00.

Description of Change:

First release of the Check Tool for Network Projectors for Windows

Reason:

The Check Tool for Network Projectors makes it possible to easily check whether EPSON Quick Wireless Connection and EMP NS Connection's Quick Connection mode can operate on the users' Windows PC properly. The Check Tool for Network Projector can also be used as a reference check before the purchase of the projector or as a troubleshooting Tool.

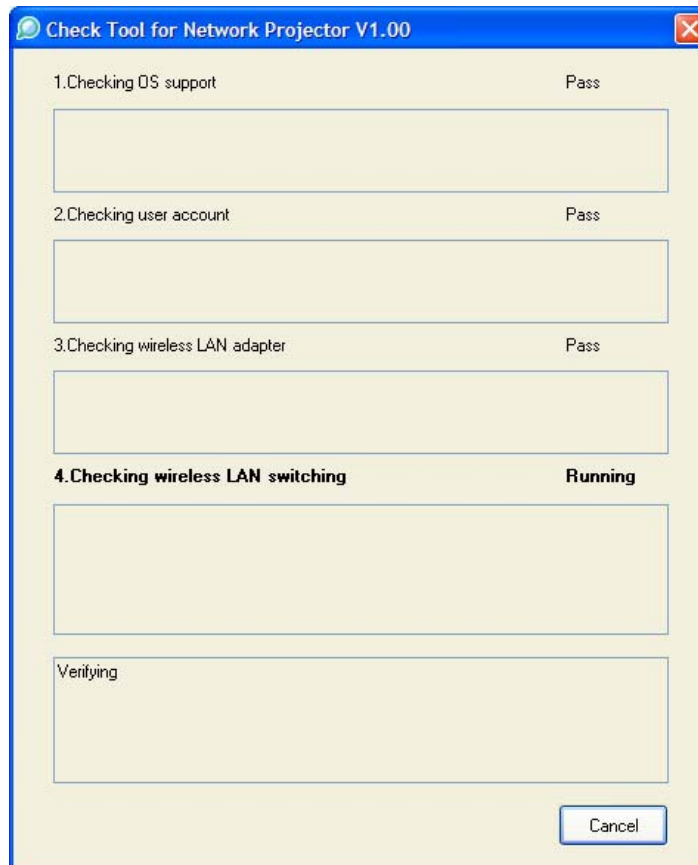
1) Function of the Application

Application name	Check Tool for Network Projector V1.00
Notes	<p>The Check Tool checks automatically whether EMP Quick Wireless Connection and EMP NS Connection's Quick Connection mode can operate properly on the user's Windows PC in terms of the following four points:</p> <ol style="list-style-type: none">1. Checks OS support.<ul style="list-style-type: none">• Checks whether the OS is supported by EMP Quick Wireless Connection / EMP NS Connection.2. Checks user account<ul style="list-style-type: none">• Checks user's account for administrator privileges to install EMP Quick Wireless Connection / EMP NS Connection.3. Checks the wireless LAN adapter<ul style="list-style-type: none">• Checks whether the wireless LAN adapter and driver are installed on the PC.• Checks whether the wireless LAN is active.

Notes

4. Checks wireless LAN switching
 - Checks whether wireless LAN adapter is turned ON.
 - Checks whether EMP Quick Wireless Connection and EMP NS Connection's Quick Connection mode can set the SSID on the user's PC when trying to connect to a projector using EMP Quick Wireless Connection and EMP NS Connection's Quick Connection Mode.

The Check Tool checks for communication conflict and whether it can actually stop the utilities when both utilities--EMP Quick Wireless Connection V1.00 and EMP NS Connection-- are both installed on the users PC.



Notes	<p>Output of the log file:</p> <ul style="list-style-type: none"> • The Check Tool records the result in a text file (log file). Usually, the log file is saved under the name of CheckInfoDATE.log in the directory where “EB_CHT.exe” is stored
Limitations	<ul style="list-style-type: none"> • When the Check Tool is checking the user’s PC, the user’s PC drops off network. • The Check Tool does not check whether the firewall of manufacturers of security software other than Windows may be blocking EPSON Quick Wireless Connection/EMP NS Connection.

2) Operating Environment

Check Tool for Network Projector V1.00

OS	Windows 2000 SP4 Rollup1 / XP Home Edition/ XP Professional(32bit) non-SP,SP1,SP2,SP3 /Vista SP1 Home Basic/Home Premium/Ultimate/Business/Enterprise(32bit) non-SP,SP1
CPU	Windows: Mobile Pentium III 1.2GHz at least (Pentium M1.6GHz at least recommended)
Memory	256MB at least (Recommendation: 512MB at least)
Disk space	20MB at least
Display	Resolution: At least VGA(640 x 480) but no more than UXGA (1600 x 1200) At least 16 bit color

- 3) **Location of download file: Check Tool for Network Projector V1.00**
Download `epson12794.exe` from the Epson website (www.epson.com).
This is a self-extracting file; please follow the screen prompts to install the Check Tool software.

- 4) Double-click the `[EB_CHT.exe]` icon

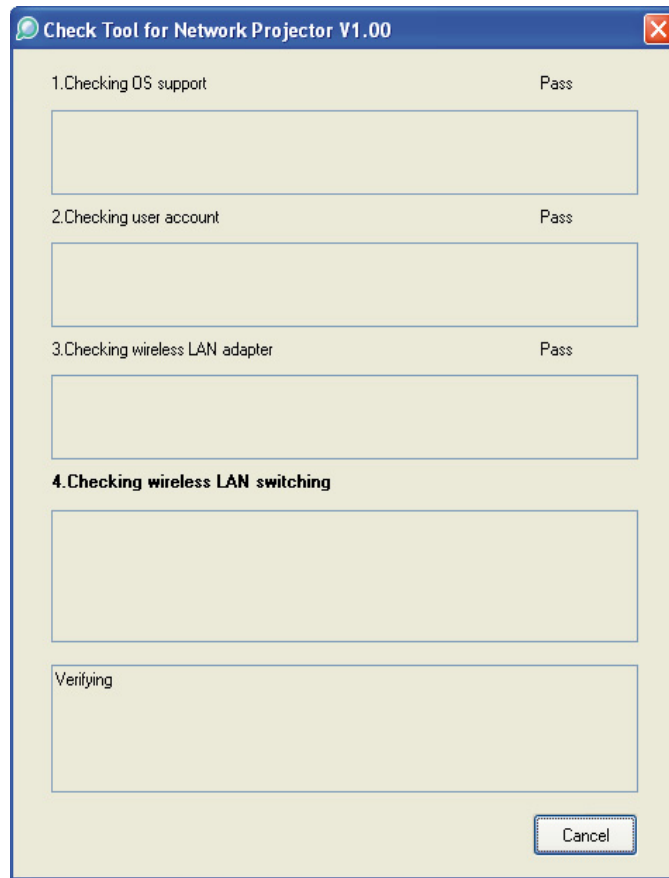
- 5) Read the contents of the `[SOFTWARE LICENSE AGREEMENT]`, and click the `[Agree]` button.

- 6) A dialog indicating the program is starting opens with the following message:

**This tool cuts off the network connection temporarily.
Click the `[Start]` button to begin verification.**

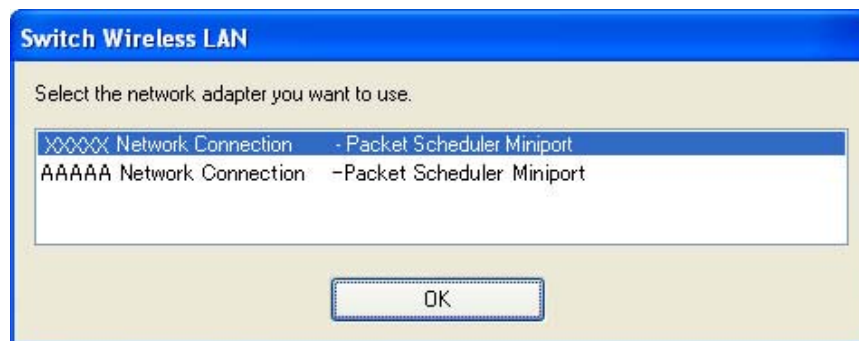


- 7) The Check tool dialog is displayed. It takes a few minutes for the results of the verification are displayed



- 8) When two or more wireless LAN adapters are available on your computer, the adapter selection dialog opens.

Select the wireless LAN adapter and press the OK button to continue.



9) When the verification is complete, the result is displayed on the bottom of the dialog.

The result is stored in the same folder as the check tool.

File Name: CheckInfo<****>.log

**** indicates the created date and time.

[Exhibit 1]

Wireless LAN client list that NSC and Quick Wireless Connection stop their service process

	Manufacturer Name	Adapter Name	Wireless LAN Utility Name
Supported by NSC V2.30	D-Link	Air Plus XTREMEG DWL-G650	D-Link AirPlus XtremeG Utility (CD)
	NETGEAR	WN511T	Smart Wireless Utility Ver.1.1.5.9(CD)
	BUFFALO	Buffalo all products	Client Manager 3 Ver.1.2.10(Web)
	IBM	ThinkPad products	Access Connection(Web) *1 Ver.4 or later
	IBM	ThinkPad products	Access Connection(Web) *1 Ver.3.71
	Logitec	Logitec LAN-WAG/U2 Wireless LAN Adapter	Logitec Wireless LAN Client Utility
	Linksys	Wireless-G Notebook Adapter v.5.0	WPC54G-JP setting utility
	NETGEAR	WG511AJP	NETGEAR WG511A Smart Wizard Ver3.2.3.306
	NETGEAR	WGM511	NETGEAR SMART WIZARD - Wireless Assistant WGM511 Ver 1.0.0.7
	NETGEAR	WPNT511	NETGEAR WPNT511 SMART WIZARD Ver1.1.3.0

	Linksys	WPC300N	Wireless-N Notebook Adapter Wireless Network Monitor v1.05
	Linksys	WPC54G	Wireless-G Notebook Adapter Wireless Network Monitor Ver 3.1
	Manufacturer Name	Adapter Name	Wireless LAN Utility Name
	Linksys	WPC54GX4	Wireless-G Notebook Adapter with SRX400 Setup Wizard V1.1
	Linksys	WUSB54GP	Wireless-G Portable USB Adapter WLAN Monitor v1.05
	Linksys	WUSBF54G	Wireless-G USB Adapter with Wi-Fi Finder
	NETGEAR	WG511 v2	
	Linksys	WPC54GX	Wireless-G Notebook Adapter With SRX Wireless Network Monitor v. 1.2
Supported by NSC V2.40	Linksys	WUSB54GSC	Compact Wireless-G USB Adapter Wireless Network Monitor v1.05
Supported by NSC V2.50 & Quick Wireless Connection V1.00	Atheros		Atheros Client Utility

*1: Because Access Connection service stops, power display of Power Manager becomes invalid.

Software Upgrade History Quick Wireless

Version	Release date	Remark
V1.00	August. 12, 2008	V1.00 release

EPSON PRODUCT SUPPORT BULLETIN

Date:	09/17/2008	Originator:	VS
PSB #:	PSB.2009.01.003	Authorization:	Kps
Reference:	TI 08-29e Rev. A	Total Pages:	8
Product(s):	PowerLite 1735W, 735c, 737c, 745c, 755c, 765c, 835p, 1705c, 1715c, 1725, 1815c, 1825, 7850p, 7950p, 8300i with EasyMP.Net optional module, Pro G5150 and Pro G5350 projectors		
Subject:	EMP SlideMaker2 updated Version 1.30 – provides scenario support for WXGA (1280 x 800) resolution		

This bulletin was created to inform users about a software update for the EMP SlideMaker2 to Version 1.30.

Description of Change:

Updated software release for creating scenarios in WXGA (16:10) format.

Reason:

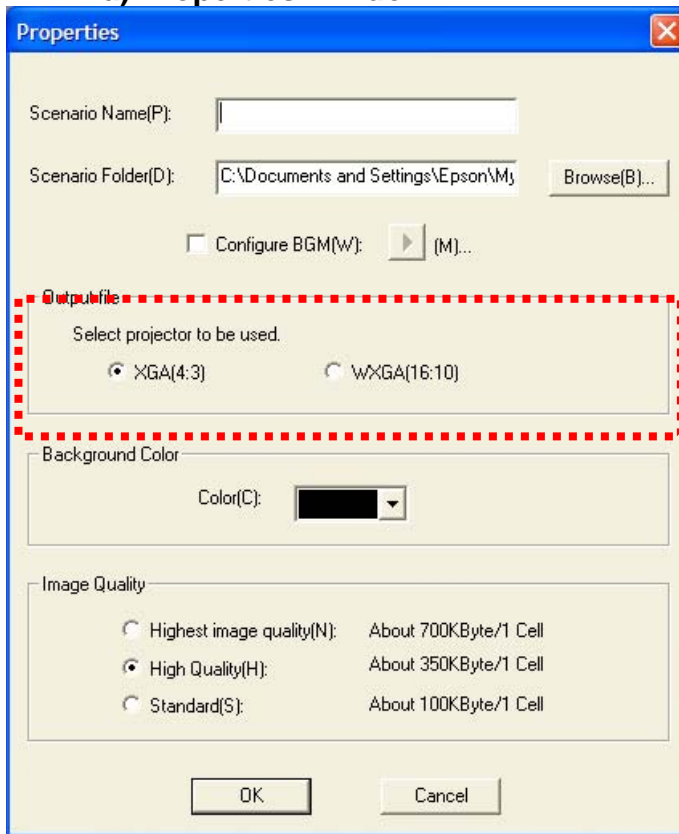
- The updated version of EMP SlideMaker2 provides support for creating scenarios in XGA (1024 x 768) resolution and WXGA (1280 x 800) resolution.
- It also provides the ability to select scenarios in XGA (4:3) or WXGA (16:10) format, depending on the projector model used for the presentation.

Limitations:

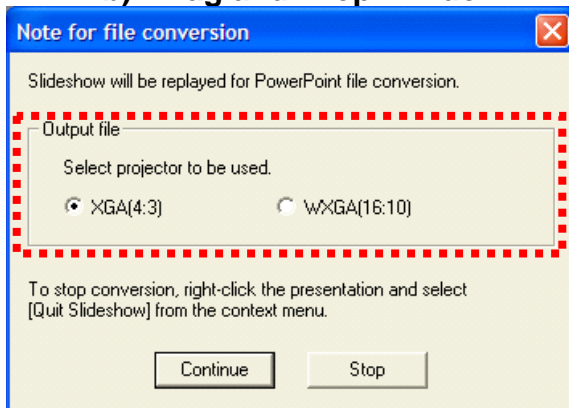
- When creating a 16:10 scenario, the JPEG image must be in a 16:10 format.
- A 16:10 converted scenario can only be displayed with a WXGA (1280 x 800) projector.
- A 4:3 converted scenario can be displayed with a XGA or WXGA supported projector.
- When adding a PowerPoint slide from a thumbnail window to EMP SlideMaker2 with Microsoft Office 2007, the scenario image file may deteriorate due to an issue with Microsoft Office 2007 SP1.

1) Selecting Aspect Ratio for the Projector being used:

a) Properties Window



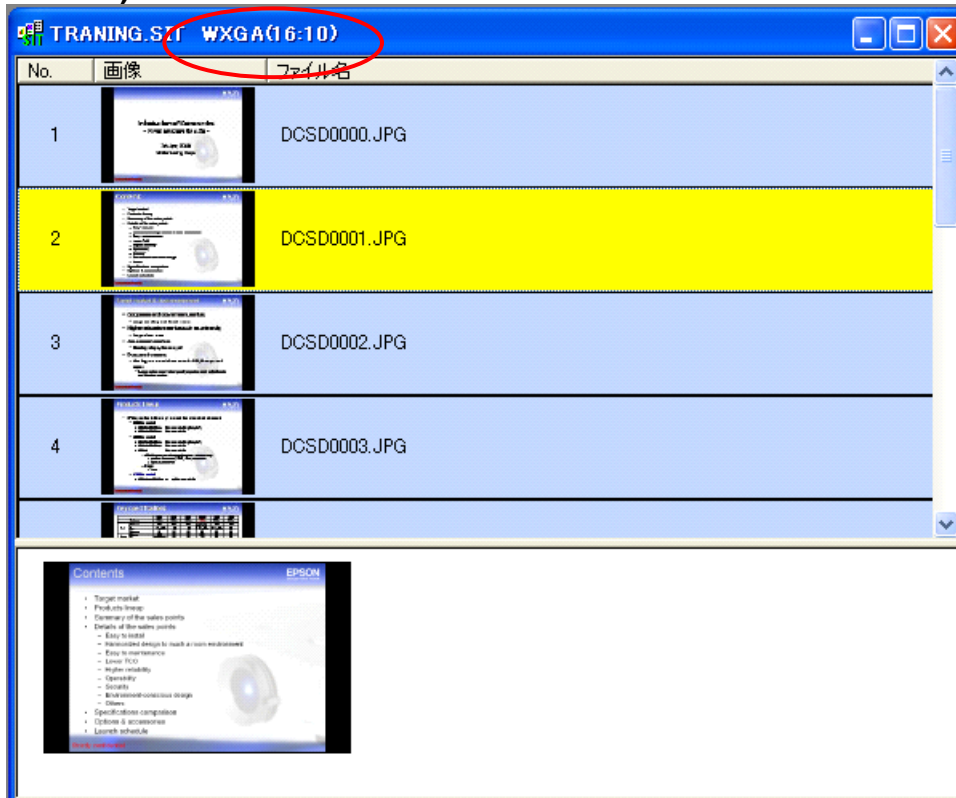
b) Drag and Drop Window



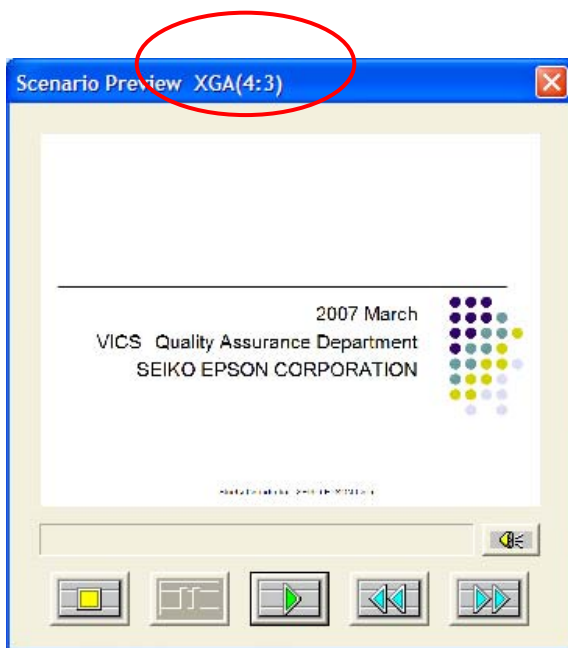
2) How to Verify the Aspect Ratio of the Scenario:

The resolution of the scenario is displayed in the window title of the Scenario Window and Scenario Preview as shown below:

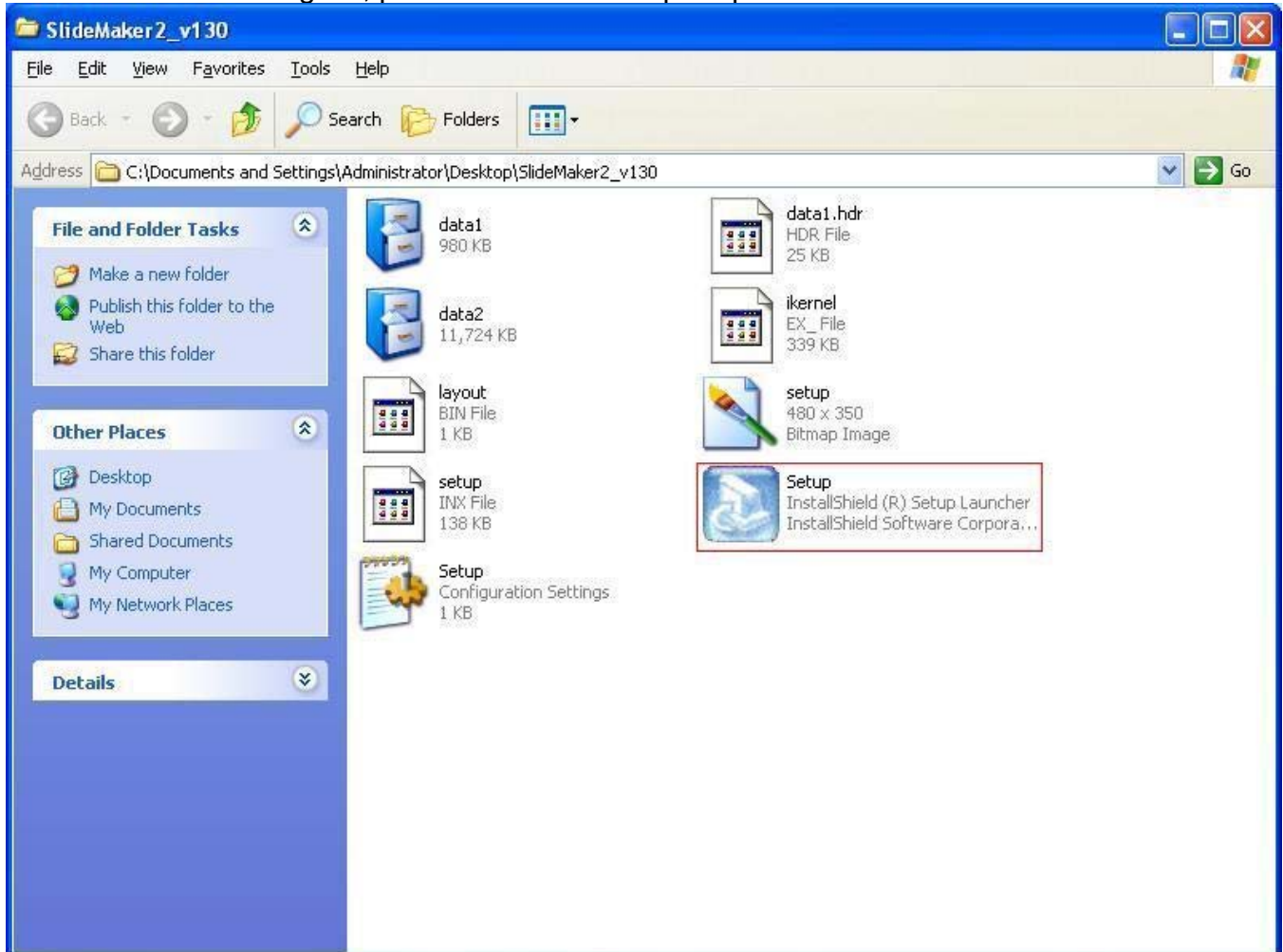
a) Scenario Window



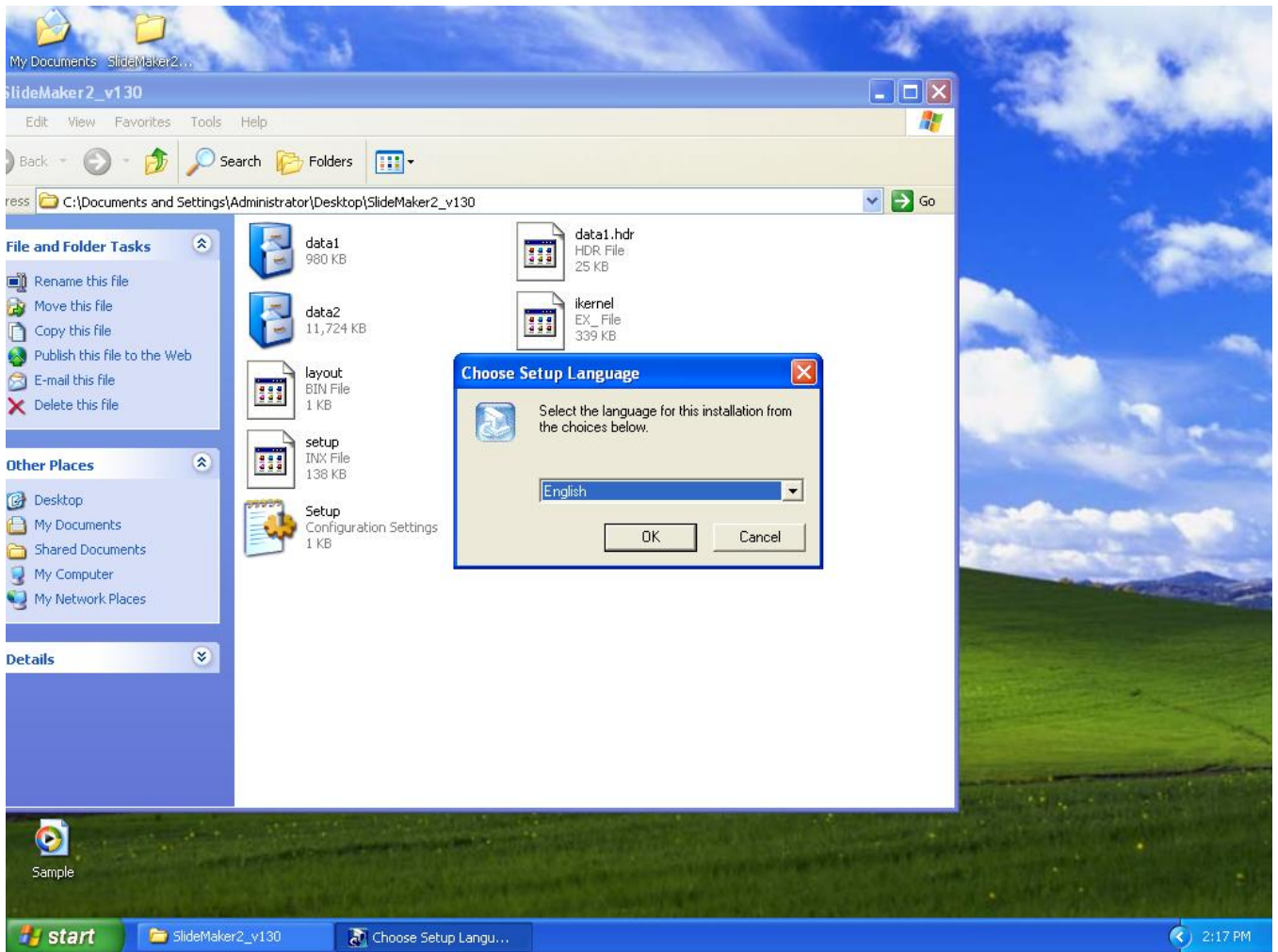
b) Scenario Preview



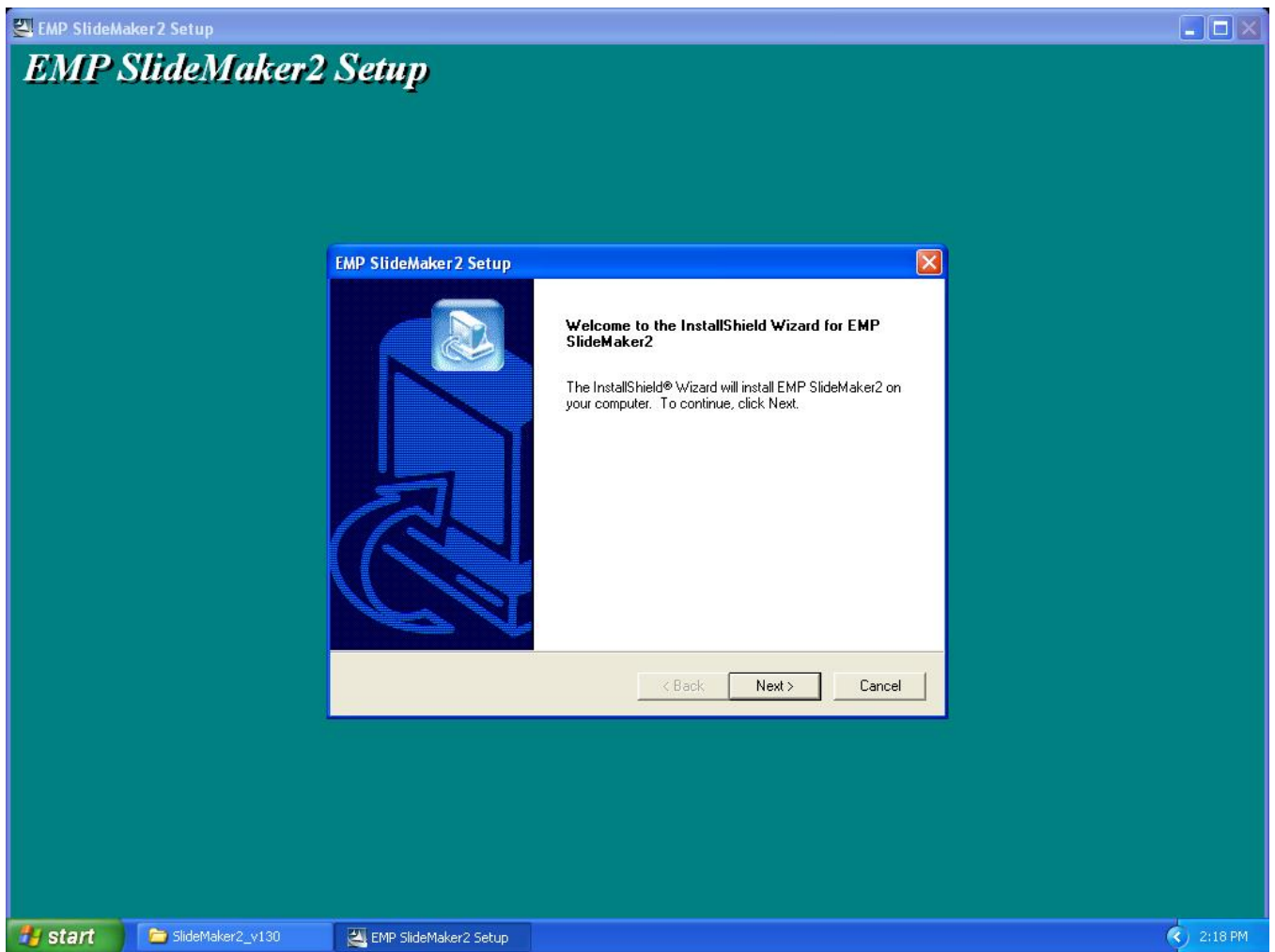
3) Location of download file: EMP SlideMaker2 updated Version 1.30
Download epson12812.exe from the Epson website (www.epson.com)
This is a self extracting file, please follow screen prompts.



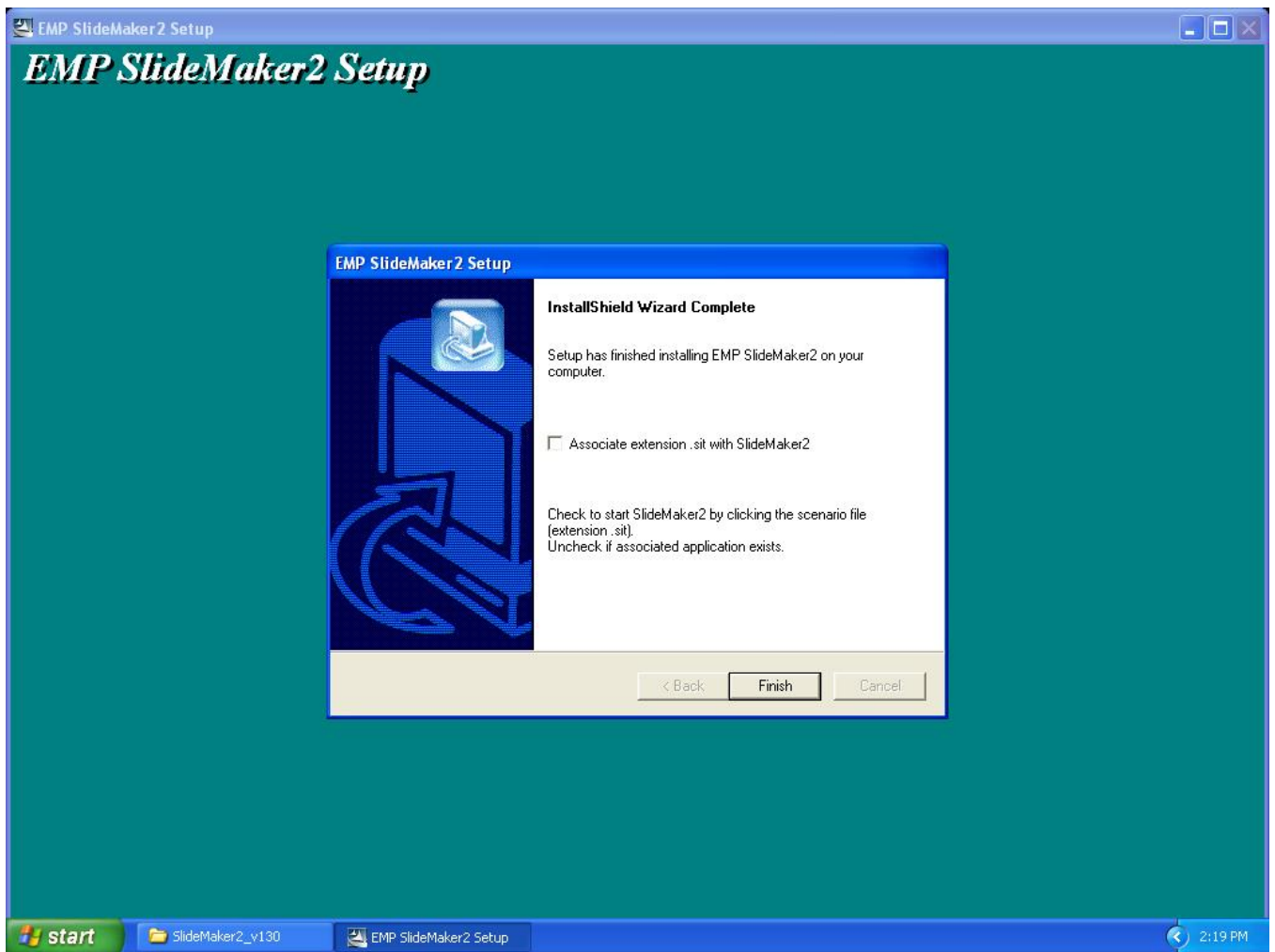
After "Clicking" on the "Setup.exe" file, your will be prompted to:



Select you language.



Click "Next" at this screen.



Click "Finish" to complete the installation.

4) **How to User the software:** Please refer to the original documentation that came with your Projector.

5) **Operating Environment:**




OS	Windows 98/98SE/Me/ 2000 Professional/XP Home Edition SP4 / XP SP1,SP2,SP3 Professional(32bit) / Vista non-SP,SP1 Home Basic/Home Premium/Ultimate /Business/Enterprise(32bit)
Office	Office2000、 OfficeXP、 Office2003、 Office2007
CPU	At least Celeron 300MHz (Recommended: Celeron 400MHz or above)
Memory	At least 64MB (Recommended: 128MB or above)
Disk space	At least 50MB
Display	At least SVGA (800×600) (Recommended: XGA(1024x768))

EPSON PRODUCT SUPPORT BULLETIN

Date:	11/13/2007	Originator:	AP
PSB #:	PSB.2007.11.005A	Authorization:	Kas
Reference:	TI 07-63e, Rev. A	Total Pages:	3
Product(s):	Epson EMP Monitor		
Subject:	EMP Monitor Version 4.21 Release		

This bulletin was created to inform you of the release of Epson EMP Monitor version 4.21 utility.

New Functions and Improvements:

New Functions, Improvements	Supported Models	Function / Improvement Description
Support for 25 languages	All projectors (see Supported Projectors table)	Language support extended to include Chinese (traditional), Dutch, Danish, Polish, Hungarian, Czech, Romanian, Slovene, Norwegian, Swedish, Finnish, Russian, Ukrainian, Greek, Turkish, Arabic. Languages supported in prior version of EMP Monitor: English, Japanese, French, German, Italian, Spanish, Portuguese, Chinese (simplified), Korean
Abnormally low air flow notification 	PowerLite 6100i / 6110i	Indicates an abnormal decrease in the force of air flow through the air filter. User should check for air filter obstructions, clean and replace air filter as necessary. This feature is available only for the indicated models.
Air flow sensor error 	PowerLite 6100i (with firmware version 1.10 or later) / 6110i	Indicates air flow sensor error. This feature is available only for the indicated models
Clean air filter notification 	PowerLite 6110i	User notification to clean air filter. This feature is available only for the indicated model.

Supported Projectors:

This application supports the following Epson projectors:

PowerLite 735c	PowerLite 1715c	PowerLite 1815p
PowerLite 737c	PowerLite 6100i	PowerLite 822p
PowerLite 745c	PowerLite 7800p	PowerLite 6110i
PowerLite 755c	PowerLite 7850p	PowerLite Cinema 500
PowerLite 765c	PowerLite 7900NL	PowerLite 61p
PowerLite 830p	PowerLite 8300i / 8300NL	PowerLite 81p
PowerLite 835p	PowerLite 8300i with the EasyMP.net Option Module installed	PowerLite 82c
PowerLite 1705c	PowerLite 9300NL	PowerLite 821p

Supported Operating Environment:

Operating System requirement	<ul style="list-style-type: none"> • Windows 98SE / Me / NT 4.0 SP6 (except Ukrainian) / 2000 Professional / XP Home Edition / XP Professional (32 bit) / Vista Home Basic / Vista Home Premium / Vista Ultimate (32 bit) / Vista Business (32 bit) / Vista Enterprise (32 bit) (except Arabic) • Internet Explorer 5.0 or later
Minimum CPU requirement	Pentium MMX 166 MHz (Recommended: Pentium II 233 MHz or faster)
Minimum RAM requirement	At least 64 MB (Recommended: 128 MB or more)
Drive space requirement	At least 50 MB free
Display requirements	SVGA (800 x 600) or higher resolution, 32 bit color display or higher

Obtaining the Update:

Download epon12456.exe from www.epson.com to get the version 4.21 update for EMP Monitor. This file is a self-extracting archive and will start the installation utility for EMP Monitor.

Software History:

Version	Release Date	Notes
3.00	December 25, 2002	Added support for the PowerLite 735c
3.01	February 26, 2003	Added support for the PowerLite 7800p / 8300i
3.02	April 18, 2003	Added support for the PowerLite 7850p / PowerLite 8300i with the EasyMP.net option module installed
3.03	November 21, 2003	Added support for the PowerLite Cinema 500
3.04	April 1, 2004	Added support for the Serial ↔ TCP/IP conversion adapter for the PowerLite 61p / 81p
4.01	October 18, 2004	Added support for projectors installed on large scale networks
4.02	August 29, 2005	Addition of timer function, auto search by specifying IP address. Improvement of communication logs sizes
4.10	May 8, 2006	Addition of support for PowerLite 6100i with support for additional monitoring features unique to the PowerLite 6100i
4.20	May 29, 2007	Added support for Windows Vista (32 bit)
4.21	September 26, 2007	Increased language support to 25 languages

EPSON PRODUCT SUPPORT BULLETIN

Date:	06/06/2005	Originator:	JD
PSB #:	PSB.2005.06.001	Authorization:	Kps
Reference:	N/A	Total Pages:	3
Product(s):	Powerlite 8300/8300 with EasyMP.net/9300 series Projectors		
Subject:	Filter-Cleaning Procedures		

This bulletin was created to inform users about the filter-cleaning procedures necessary for maintaining proper airflow and reducing the potential for overheating.

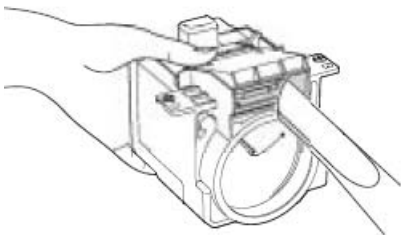
Reason:

The PowerLite 8300 and 9300 series projectors have five (5) filters that must be cleaned on a regular basis. Cleaning the filters is critical to maintaining proper airflow inside the projector and reducing possible overheating issues. Incomplete or infrequent filter-cleaning maintenance can cause one or more filters to accumulate excessive dust over time. This can inhibit proper airflow so that the projector begins to overheat during operation and eventually shut down. The next section provides information on the location of the filters on the projector, cleaning instructions and recommended maintenance schedules.

Action:

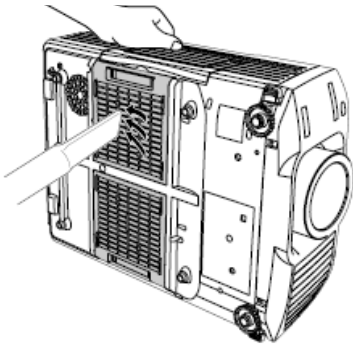
The following filters should be cleaned after every 100 hours of use. For dusty environments, filter cleaning should be performed more frequently.

- 1) Wire mesh filter (inside lamp housing shutter):



Hold shutter open and use a computer vacuum to remove dust.

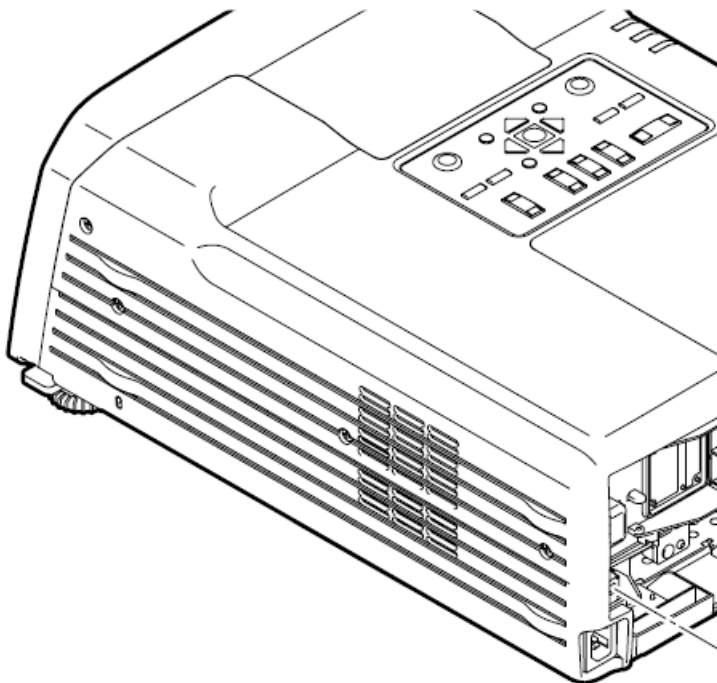
2) Air intake filters (2)--located at bottom of projector:



Use a computer vacuum to clean both filters. If you don't have one, then use a soft brush and gently clean the filters. If the dirt is difficult to remove or either filter is damaged or broken, replace the filter(s).

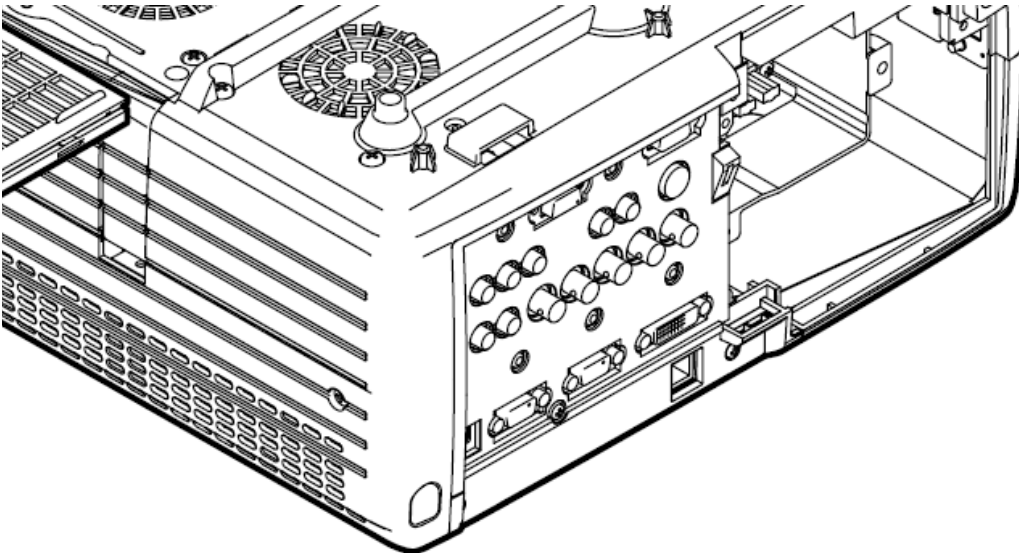
Note: Both filters should be replaced when the lamp is replaced.

3) Power supply intake filter (located on side of projector—opposite handle side)



Use a computer vacuum to clean dust from the filter and vents.

4) Lamp intake filter (circular filter located at bottom of projector)



Use a computer vacuum to clean dust from the filter and vents.

EPSON PRODUCT SUPPORT BULLETIN

Date:	05/11/2005	Originator:	JAM
PSB #:	PSB.2005.05.005	Authorization:	Kps
Reference:	N/A	Total Pages:	2
Product(s):	PowerLite 8300i		
Subject:	1400 x 1050 DVI Compatibility Support		

Reason:

This bulletin is to inform you of the testing results for 1400 x 1050 DVI full-screen resolution with the Epson PowerLite 8300i Projector.

Question:

1. Has the Epson PowerLite 8300 projector been tested for 1400 x 1050 DVI full-screen display compatibility?
2. What type of DVI port is on the PowerLite 8300 and PowerLite 9300 Projectors?

Answer:

1. The Projector has native resolution of 1280 x 1024. Its maximum "DVI" resolution is 1280 x 1024. This Projector can only support 1400 x 1050 DVI full-screen display using a DVI-D to VGA 15HD cable. Detailed information listed below.
2. The port on the rear A/V module is DVI-D (DVI Digital) dual link. It is not an analog port and does not have the 4 extra analog pins for DVI-I (DVI Digital and Analog). A DVI-I cable cannot physically attach to the port since it can cause damage to the cable.

Operating Systems tested:

System Version(s): Mac OS X 10.2.8

Hardware tested:

Computer(s): Apple PowerMac G5
Video Chip Set: NVidia, GeForce FX 5200

Video Test Generators tested:

Make: Extron
Model #: VTG 400

Projector Resolution “About” information:

Source: DVI
Input Signal: Digital-RGB
Resolution 1280 x 1024
Refresh Rate: 60 Hz

Input Device: PowerMac G5

Source: Computer 1
Input Signal: Analog-RGB
Resolution 1400 x 1050
Refresh Rate: 60 Hz

Input Device: Extron VTG 400

Tested by:

J.A.Madrigal
Epson America Inc.,
Advanced Product Support
Long Beach, CA

EPSON PRODUCT SUPPORT BULLETIN

Date:	05/11/2005	Originator:	JAM
PSB #:	PSB.2005.05.003	Authorization:	Kps
Reference:	N/A	Total Pages:	2
Product(s):	PowerLite 8300i and PowerLite 9300i		
Subject:	1400 x 1050 Compatibility Support		

Reason:

This bulletin is to inform you of the testing results for 1400 x 1050 full-screen resolution with the Epson PowerLite 8300i and PowerLite 9300i video projectors.

Question:

1. Have the Epson PowerLite 8300 and PowerLite 9300 Projectors been tested for 1400 x 1050 full-screen display compatibility?
2. Why do some laptops undersize the screen and perform in a pan-and-scan function on projectors with 1400 x 1050 native resolutions?

Answer:

1. Yes, the Projectors have been confirmed functional with various video sources and software operating systems for full-screen display performance. Detailed information listed below.
2. Various laptop manufacturers use ATI RagePro or ATI Radeon chipsets for the built-in LCD screen. The "Advanced Settings" of the video driver function in pan-and-scan mode when re-directing video to the external video port. The true output at the VGA 15-HD port is only 1280 x 1024 as verified using by a VGA monitor that can sense and display the video settings from the monitor's menu options.

Operating Systems tested:

System Version(s): Windows 98SE and Windows XP Service Pack 2
Mac OS X 10.2.8

Hardware tested:

Mother Board(s): ASUS P4BGL-VM ATX Motherboard
Video Chip Set: Intel 8284G/GL Graphics Controller

Computer(s): Apple PowerMac G5
Video Chip Set: NVidia, GeForce FX 5200

Video Test Generators tested:

Make: Extron
Model #: VTG 400

Projector Resolution “About” information:

Source: DVI
Input Signal: Digital-RGB
Resolution: 1400 x 1050
Refresh Rate: 60 Hz

Input Device: PowerMac G5

Source: Computer 1
Input Signal: Analog-RGB
Resolution: 1400 x 1050
Refresh Rate: 60 Hz

Input Device: Extron VTG 400

Tested by:

J.A.Madrigal
Epson America Inc.,
Advanced Product Support
Long Beach, CA

EPSON PRODUCT SUPPORT BULLETIN

Date:	04/19/2004	Originator:	TC
PSB #:	PSB.2004.04.005	Authorization:	<i>Kas</i>
Reference:	N/A	Total Pages:	1
Product(s):	PowerLite 735c/7850p & 8300i (with EasyMP.net module.)		
Subject:	EMP NS Connection failures caused by Remote Control applications		

This bulletin was created to inform you of an issue that can occur when using the PowerLite 735c/7850p, 8300i (with EasyMP.net module) and remote control software.

Description of Issue:

The user attempts to run EMP NS Connection on Windows 98SE/Me/2000/XP with the PowerLite 735c/7850p/ 8300i (with EasyMP.net module). When the EMP NS Connection application is launched, it immediately gives an error message stating that EMP NS Connection "FAILED TO INITIALIZE."

Reason:

Epson has found that remote control software, like PCAnywhere and RealVNC, causes a conflict with the EMP NS Connection application. These remote control applications use a "Video Hook Driver" that conflicts with the Epson GDI Monitor driver that is installed and used by EMP NS Connection. Most remote control programs load a small client application at Windows startup and leave an icon in the system tray (located at the bottom right on the desktop) to indicate they have been loaded. In most cases, the remote control software can be turned off by right-clicking on the icon in the system tray and disabling or exiting the program. Remote control applications do not have to be removed from the system in order for EMP NS Connection to run properly; they just need to be turned off. Consult the documentation that came with the remote control software for information on how to disable the software from automatically launching every time the computer is started.

Once the remote control software has been turned off, EMP NS Connection should run without returning an error. If you continue to have issues connecting to the projector, consult the EMP NS Connection Help file or User's Guide for troubleshooting assistance.

Notes:

VNC stands for Virtual Network Computing. It is a remote console utility which allows a user at his computer to assume control of another computer across a network, as if they were sitting in front of that computer.

Remote Control Applications known to conflict with Epson EMP NS Connection

- **PCAnywhere** - versions 32, 9.0, 9.2, 10.0, 10.5 and 11.0 by Symantec
- **Real VNC** - versions 3.3.7 and 4.0 beta by RealVNC with the GNU Library General Public License
- **TightVNC** - version 1.3dev3 based on VNC with the GNU Library General Public License
- **NetworkStreaming** – v. 7.1 (formerly ExpertVNC)

Any other VNC remote control software based on RealVNC under the GNU Library General Public License or remote control programs that load a "Video Hook Driver" (listed in Windows Device Manager under "Display Adapters), can cause similar conflicts.

EPSON PRODUCT SUPPORT BULLETIN

Date:	02/26/2004	Originator:	AP
PSB #:	PSB.2004.02.009	Authorization:	AP
Reference:	TI03-57e Rev. A	Total Pages:	1
Product(s):	PowerLite 735c / 7800p / 7850p / 8300i / Cinema 500		
Subject:	EMP Monitor version 3.03 Update		

This bulletin was created to inform you of the availability of EMP Monitor version 3.03. This version of the EMP Monitor software has added support for the PowerLite Cinema 500 projector. All other support for previously supported projectors remains the same.

This software update can be downloaded from the Epson website. Locate and download `epson11017.exe`. This file is a self extracting archive that will automatically start the program installer once the file is extracted to your computer hard drive.

Refer to the documentation provided with your projector for further information about the operation of the EMP Monitor software.

EPSON PRODUCT SUPPORT BULLETIN

Date:	October 17, 2003	Originator:	VS
PSB #:	PSB.2003.11.001	Authorization:	VS
Reference:	TI 03-42e Rev. A	Total Pages:	3
Product(s):	PowerLite 735c / 7850p / 8300i with EasyMP.net option installed		
Subject:	Supported Wired and Wireless LAN cards		

Reason:

This bulletin is to inform you of the testing results for wired and wireless LAN cards used with the PowerLite 735c / 7850p / 8300i with EasyMP.net option installed.

Models and firmware versions used in the evaluation:

Model	PW firmware version	IM-X • IM-XP firmware version
PowerLite 735c	1.00	1.01 (IM-X)
PowerLite 7850p	2.00	1.00 (IM-X)
PowerLite 8300i with EasyMP.net option installed	1.20	1.01 (IM-XP)

Wireless LAN cards configuration:

1. The tested Wireless LAN cards are inserted into the PC and a wireless LAN connection (Ad hoc mode) is made to the projector.
2. The tested Wireless LAN cards are inserted into the PC and a wireless LAN connection is made to the projector using an access point (Infrastructure mode).

Items evaluated:

The following items were tested and confirmed to work in both Ad hoc and infrastructure modes. (WEP is only supported in the infrastructure mode.)

1. All functions of EMP Monitor.
2. DHCP, ESSID and WEP can be setup by a browser and function properly.
3. EMP NS Connection functions properly with the freeze, mute, zoom, and video input change features.
4. Power Point slide show works.

Operating systems used for testing:

Windows 98 and Windows XP

Evaluation results for the Wireless LAN cards:

Wireless LAN card	PowerLite 735c	PowerLite 7850p	PowerLite 8300i with EasyMP.net
3Com,3crshpw 196, office connect	pass	pass	pass
Cisco Aironet350 AIR-PCM341(2.4GHz)	pass	pass	pass
FMV Notebook (Broadcom BCM4306)	pass	pass	pass
FMV Notebook (Intersil Prism2.5)	pass	pass	pass
Fujitsu FMV-JW181(Agere)	pass	pass	pass
Fujitsu FMV-JW183(Agere HermesII)	pass	pass	pass
Fujitsu FMV-W182(Intersil Prism2.5)	pass	pass	pass
Fujitsu FMV-JW182(Intersil Prism2.5)	-	pass	pass
FMV-STYLISTICTB93(Intersil Prism2.5)	-	pass	pass
D-Link Airplus XtremeG DWL-G650	pass	-	-
Intel,CR Pro Wireless 2011B, LAN PC Card	pass	-	-
Linksys WPC11 Wireless Network PC Card	pass	-	-
NetGear 54Mbps wireless PC Card WG511	pass	-	-
SMC 2435W, EZ Connect Turbo,	pass	-	-
US Robotic Ref. 9514115MBP	pass	-	-
BUFFALO WLI-CB-G54	pass	-	-
ADTEK ADLINK2422C	pass	Didn't pass	Didn't pass
FMV Notebook (Intel Calexico)	Didn't pass	Didn't pass	Didn't pass

Wired LAN cards configuration:

Insert the wired LAN card to be tested into the projector and make a network connection to the PC.

Items evaluated:

The following items were tested and confirmed to work.

1. All functions of EMP Monitor.
2. DHCP can be setup using a browser and functions properly.
3. EMP NS Connection functions properly with the freeze, mute, zoom, and video input change features.
4. Power Point slide show works.

Evaluation results for the Wired LAN cards:

Wired Card name	PowerLite 735c	PowerLite 7850p
3Com 3C589C-TP	pass	pass
3Com 3CXE589ET-JP	pass	pass
D-Link DFE670TXD	pass	pass
Fujitsu FMV-J182	pass	pass
Hawking PN652TX	pass	pass
Linksys PCM100 ver2	pass	pass
Netgear FA411	pass	pass
SMC SMC8041TX	pass	pass
3Com 10/100 LAN PC Card 3CCFE574BT	pass	-
PCET100-CL	pass	-
Linksys 10/100 PC Card	pass	-
SMC 8041TX V.2, EZ PC Card 10/100, SMC	pass	-
I-O Data PCLA/TE	Didn't pass	pass
PCC-TXD	Didn't pass	Didn't pass
Kingston EtherX PC Card KNE-PC2T	Didn't pass	

The following cards are NOT compatible:

1. 3Com 3CCFE575BT-JP
2. 3Com 3CXFE575CT-JP
3. 3Com 3CXFEM656C
4. Megahertz 10/100 LAN CardBus PC Card (3Com)
5. Come once (Taiwan card)
6. DFE-690TXD- Cardbus 32 bits
7. Fujitsu FMV-J184
8. Fujitsu FMV-J185
9. LPC3-CLTL
10. NetGear CardBus Notebook Adapter FA511
11. SMC 8036TX, EZ PC Card 10/100, SMC
12. TDK LAK-CB100X
13. Toshiba LANCB100A
14. Xircom CE3B-100BTX
15. Xircom CreditCard Ethernet CE3-10/10

NOTE:

No EMI (electro magnetic interference) was done, only a functionality evaluation.