

# R3210 Contactless Reader

CONTACTLESS



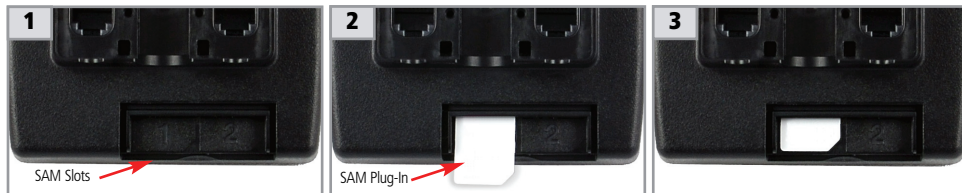
## CONFIGURATION INSTALLATION GUIDE

### COMPLIANCE

The user is cautioned that changes or modifications to the product(s) identified in this manual unless expressly approved by the party responsible for compliance could void the user's authority to operate the equipment.

- **FCC Part 15**  
This device complies with Part 15 of the FCC Rules. Operation is subject to the following two conditions: (1) this device may not cause harmful interference, and (2) this device must accept any interference received, including interference that may cause undesired operation.
- **FCC ID: NVA00004 (FCC 15.225)**
- **ICES-003**  
This Class A digital apparatus complies with Canadian ICES-003. Cet appareil numérique de la classe A est conforme à la norme NMB-003 du Canada.
- **IC: 1204B-00004 (RSS-210)**  
Operation is subject to the following two conditions: (1) this device may not cause interference, and (2) this device must accept any interference, including interference that may cause undesired operation of the device. This device meets the requirement for Radio Frequency Exposure Compliance for General Public Use. This transmitter/device must not be operated within 20cm of persons. Additional information on RF exposure/compliance to Canadian standards is available at:  
Health Canada's Safety Code 6: Limits of Human Exposure to Radiofrequency Electromagnetic Fields in the Frequency Range from 3 kHz to 300 GHz (<http://www.hc-sc.gc.ca/ewh-semt/pubs/radiation/99ehd-dhm237/index-eng.php>)
- **UL 60950-1 2nd Ed.**
- **IEC 60950-1 2nd Ed.**
- **CE:**  
Declaration of Conformity – This product has been manufactured in conformance with the essential requirements and other relevant requirements of the R&TTE Directive (1999/5/EC). This product is in conformity with the following standards respective to the specific R&TTE Articles.
  - Art 3.1.a (Safety): EN 60950-1:2001, EN 50364:2010
  - Art 3.1.b (EMC): ETSI EN 301489-3:2002
  - Art 3.2 (Spectrum): ETSI EN 300330-2:2010
- **RoHS**
- **WEEE**

### R3210 SAMs Installation



Turn the R3210 over to display back. Remove SAM cover to reveal two SAM slots (as shown).

Insert the SAM plug-in (gold side down) into an available slot (as shown).

Push the SAM plug-in until firmly seated (as shown).



Re-install the SAM cover. Turn the R3210 over and operate as normal.

#### WORLD HEADQUARTERS

**Hypercom Corporation:** 8888 E. Raintree Drive, #300 | Scottsdale, AZ 85260, USA | Tel: +1.480.642.5000 | Fax: +1.480.642.4655  
© 2010 Hypercom Corporation, all rights reserved. Hypercom, the Hypercom logo and Optimum and Design are registered trademarks of Hypercom Corporation. All other products or services mentioned in this document are trademarks, service marks, registered trademarks or registered service marks of their respective owners.

940626-001 Rev. A 07/10

# R3210 Contactless Reader

CONTACTLESS



## CONFIGURATION INSTALLATION GUIDE



### OVERVIEW

The R3210 is a high-performance contactless reader for connection to a stand-alone payment terminal, cash register or multi-lane system. Its numerous stand options cover virtually any usage scenario, from a clip-on to Optimum terminals, to a free-standing or wall-mounted unit, connected to Optimum and Artema terminals. The *R3210 Contactless Reader Configuration Installation Guide* provides information on different configuration types that are possible with the R3210 device. Specific configurations are based on whether different types of POS devices are used. Contact your Hypercom Sales Associate for specific configuration options and regional availability.

Note: Images within this guide may not exactly match your device.



[www.hypercom.com](http://www.hypercom.com)

# R3210 Contactless Reader Configuration Installation Guide

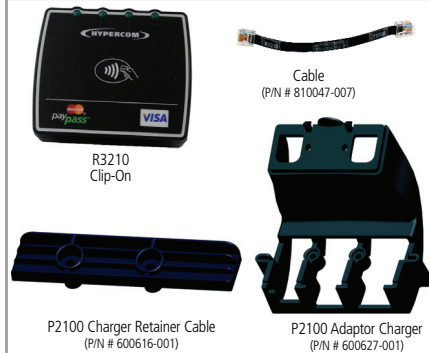
## Equipment Check List →



### WARNING:

- The R3210 can only be connected to the devices specified in this guide.
- Only operate between 0°C - 40°C.
- Do not use if visibly damaged.
- Do not expose to temperatures above 140 °F or 60 °C.
- Do not disassemble.
- Do not incinerate or crush.
- Do not power ON terminal in a flammable atmosphere, such as petrol station, chemical depot, etc.
- Keep out of reach of children and pets.
- No user serviceable parts inside.

### R3210 Clip-On P2100 Configuration (010355-001R or Equivalent)



### R3210 Stand T42xx Configuration (010355-002R / -006R or Equivalent)



### R3210 Clip-On T42xx Configuration (010355-003R / -004R / -005R or Equivalent)



## R3210 Clip-On P2100 Configuration (010355-001R or Equivalent)

- Upside Down P2100  
Installed R3210

Turn the P2100-PCI upside down. Insert the R3210 into the guides (as shown)
- Tighten 2 screws

Place clip-on head over the R3210 casing (as shown). Secure casing by tightening 2 screws to the device (as shown).
- SERIAL A port

Insert cable into the port labeled **SERIAL A** on back of the R3210 device (as shown).
- Cable Retainer

Reconnect Cable

Secure cable retainer with 2 screws (as shown). Reconnect standard P2100 cable.
- Turn terminal over and operate normally.

## R3210 Stand T42xx Configuration (010355-002R / -006R or Equivalent)

### DESK INSTALLATION

Insert one end of the cable (labeled R3210) into the R3210 port.

Cable

Insert the other end of the cable into the port labeled SERIAL on the terminal.

## R3210 Stand T42xx Configuration (010355-002R / -006R or Equivalent)

### WALL INSTALLATION

- Base  
Cable

Disengage the base from the R3210. Feed the cable connector (labeled R3210) through the opening (as shown).
- Base  
R3210  
SERIAL A port

Insert cable into the port labeled **SERIAL A** on back of the R3210 device (as shown).
- Connect the R3210 to the back of the base (as shown).
- Securely attach the R3210 to the wall using #3 Phillips round (pan) head wood screws.
- Connect the other end of the cable into the port labeled SERIAL on the terminal. Turn terminal over and operate normally.

## R3210 Clip-On T42xx Configuration (010355-003R / -004R / -005R or Equivalent)

- From the terminal, carefully remove the printer cover by squeezing the sides of the printer & lift to open. Carefully disengage cover from the hinges on the terminal (as shown).
- The R3210 will come preassembled with the printer cover (as shown).
- Place the R3210 device on the printer cover (as shown).
- Connect the cable into the port labeled SERIAL on the back of the terminal (as shown).
- Turn terminal over. Open printer cover and insert paper roll. Operate terminal normally.

**Note**

T4205

T4200-2.0

Note: If using the T4205 or T4200-2.0 devices, reuse the printer platen roller in the new printer cover.