

# L5000 Family

Applicable to L5100, L5200,  
L53x0, and L54x0

MULTI-LANE



## TERMINAL INSTALLATION GUIDE

### COMPLIANCE

The user is cautioned that changes or modifications to the product(s) identified in this manual unless expressly approved by the party responsible for compliance could void the user's authority to operate the equipment. This is a class A product. In a domestic environment this product may cause radio interference in which case the user may be required to take adequate measures.

• FCC Part 15 B / IC ICES-003

Operation is subject to the following two conditions: (1) this device may not cause harmful interference, and (2) this device must accept any interference received, including interference that may cause undesired operation.

This Class A digital apparatus complies with Canadian ICES-003. Cet appareil numérique de la classe A est conforme à la norme NMB-003 du Canada.

• FCC ID: NVA00005 (FCC 15.225)

• IC: 1204B-00005 (RSS-210)

This device meets the requirement for Radio Frequency Exposure Compliance for General Public Use. This transmitter/device must not be operated within 20cm of persons. Additional information on RF exposure/compliance to Canadian standards is available at: Health Canada's Safety Code 6: Limits of Human Exposure to Radiofrequency Electromagnetic Fields in the Frequency Range from 3 kHz to 300 GHz (<http://www.hc-sc.gc.ca/ewh-smrt/pubs/radiation/99ehd-dhm237/index-eng.php>)

• UL 60950-1 2nd Ed.

• IEC 60950-1 2nd Ed.

• CE:

Declaration of Conformity – This product has been manufactured in conformance with the essential requirements and other relevant requirements of the R&TTE Directive (1999/5/EC). This product is in conformity with the following R&TTED Articles and standards.

- Art 3.1.a (Safety): EN 60950-1:2001

- Art 3.1.b (EMC): ETSI EN 301489-3:2002

- Art 3.2 (Spectrum): ETSI EN 300330-2:2010

• See Laser caution on preceding page.

• When so powered, this device is intended to be connected only to Power over Ethernet (PoE) networks that are not routed to the outside plant.

• RoHS

• PCI PTS 2.xx

• WEEE

• PCI PA-DSS

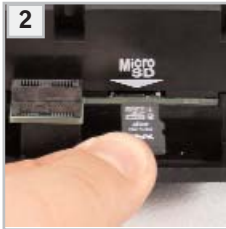
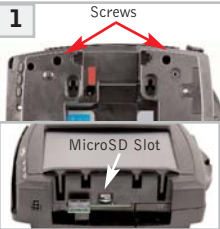
### NOTICES

If a power supply was NOT shipped with the L5000 terminal or if there is NOT an immediately available power supply to use with the L5000, use the following when selecting and using a suitable power supply:

- Must use Hypercom P/N 870066-004, or
- Must use a suitably safety Listed power supply, output rated 12-24Vdc 1A or greater and must be a certified Limited Power Source, marked "LPS".

### Inserting a MicroSD Card

### Cleaning the Device



Power down and remove all power from terminal before installing card. Turn terminal over. Loosen two retained screws on underside of terminal and remove top cap or contactless module. Card slot is accessible once top cap or contactless module is removed.

Insert card (gold connectors down) into MicroSD slot (as shown). Push card in until firmly seated in slot. Reinstall top cap or contactless module. Tighten two retained screws to secure the top cap or module to terminal. Contact Hypercom for list of approved cards and formatting information.



#### WARNING:

- Do NOT use industrial strength or an abrasive cleaner as it may damage or scratch the screen.
- Do not immerse device in water (or liquid).
- Do NOT spray water or cleaner into the MSR slot, Smart Card Reader or ports on the back.



To Clean Screen: Apply distilled water or mild glass cleaner onto a soft, lint free cloth and gently wipe terminal screen.

To Clean Terminal: Apply distilled water or plastic-safe cleaner onto a soft, lint free cloth and gently wipe terminal.

### World Headquarters:

Hypercom Corporation: 8888 E. Raintree Dr, Ste 300, Scottsdale, Arizona 85260, USA | Tel: +1.480.642.5000 | Fax: +1.480.642.4655

© 2010 Hypercom Corporation, all rights reserved. Hypercom and Optimum and Design are registered trademarks of Hypercom Corporation. The Hypercom logo is a trademark of Hypercom Corporation. All other products or services mentioned in this document are trademarks, service marks, registered trademarks or registered service marks of their respective owners. 940366-048 Rev. A 01/11

NORTH AMERICA | CENTRAL AMERICA | LATIN AMERICA | ASIA/PACIFIC RIM | EUROPE | MIDDLE EAST | AFRICA

# L5000 Family

Applicable to L5100, L5200,  
L53x0, and L54x0

MULTI-LANE



## TERMINAL INSTALLATION GUIDE



**HYPERCOM**  
www.hypercom.com

NORTH AMERICA | CENTRAL AMERICA | LATIN AMERICA | ASIA/PACIFIC RIM | EUROPE | MIDDLE EAST | AFRICA

# L5000 Family Terminal Installation Guide

Applicable to L5100, L5200, L53x0, and L54x0



## WARNING:

- Intended for operation between 0°C to 45°C (32°F to 113°F).
- Do not use if visibly damaged.
- Do not disassemble.
- No user-serviceable parts inside terminal.
- Do not incinerate or crush.
- Do not power ON terminal in a flammable or explosive atmosphere, such as a petrol station, chemical depot, etc.
- Keep out of the reach of children and pets.



LASER RADIATION  
DO NOT STARE INTO BEAM  
CLASS 2 LASER PRODUCT

## CAUTION:

- Class 2 Laser Product.
- Do Not Stare Into Beam.
- Laser marking located on underside of L54x0 product.
- IEC/EN 60825-1 Ed.2: 2007
- Wavelength: 650nm
- Maximum laser power: 0.5 mW

## Equipment Checklist



L5000 Family Terminal



Stylus Pen



Power Supply (if provided)



Smart Card Reader Plug



Cable Management Bracket



Power Cord (if provided)

The *L5000 Family Terminal Installation Guide* provides basic terminal setup information.

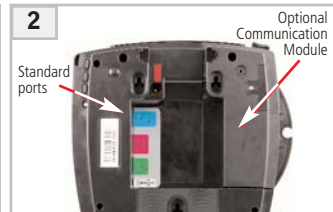
Note: Images within this guide may not exactly match your device (e.g., smart card reader, barcode scanner, and contactless and communication modules are optional).

Additional accessories are available for purchase. Contact your Hypercom Sales Associate for specific options and regional availability.

## Power & Cable Connections



1 Turn terminal over. If required, connect Power Cord to Power Adapter. Insert Power Adapter into POWER port. Turn counter-clockwise to lock. Insert other end of Power Cord into wall receptacle.



2 Standard ports:  
- PUSB  
- 100 BASE-T Ethernet  
- RS232+POWER  
- USB Host

Ports available on Communication Module:  
- Ethernet  
- Tailgate  
- Power over Ethernet (PoE)



3 If required, insert 12-24 volt Powered RS232 cable into RS232+POWER port (as shown). Note: Power supply required for RS232 cable. See RS232 cable note in Accessories Available, below.



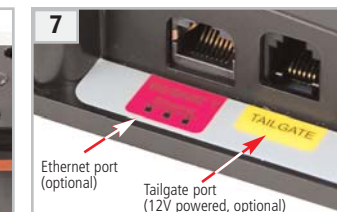
4 If required, insert the 12-24 volt Powered USB cable into the PUSB port (as shown). Note: Port used to interface to another USB port on a PC or POS terminal.



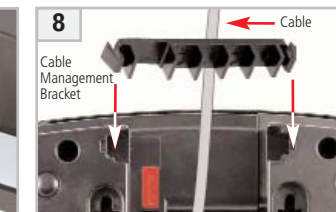
5 If required, insert the cable into the 100 BASE-T port (as shown). Note: Used to download images, for HTMS support, or for enabling financial transactions using SSL over the internet.



6 If required, insert the USB cable into the USB Host port (as shown). Note: Supports connection of certain peripheral USB devices to OS/FPE32.



7 If required, insert cables into corresponding Communication Module ports.  
Note: Contact your Hypercom Sales Associate for specific Communication Module options.

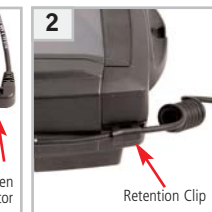


8 Arrange installed cables through opening at back of terminal. Insert bracket and press into grooves to left and right of opening to secure. Note: Position largest opening in bracket toward left side of opening.

## Stylus Pen



1 Insert the connector end of the stylus pen (as shown).



2 Wrap stylus cable along back of terminal and secure in retention clip (as shown).



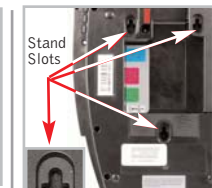
3 When not in use, insert the stylus pen into the holder (as shown).

## Smart Card Reader Plug



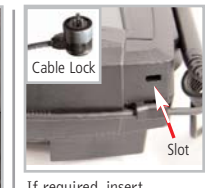
If required, remove smart card reader plug from wrapper. Insert plug into smart card receptacle slot (as shown).

## Stand Installation



Turn the terminal over. Insert metal stand into the three stand slots (as shown).

## Cable Lock



If required, insert customer-provided cable lock into Kensington® slot. Loop cable around permanent object to secure terminal in place.

## Accessories Available



RS232 Cable (P/N 810408-001)  
To be used with Power Supply (P/N 870066-004)



USB Cable (P/N 810371-012)



Powered USB Cable  
12 volt (P/N 810349-001)  
24 volt (P/N 810349-002)



Power Supply (P/N 870066-004)  
Requires a Power Cord



Power Cord (North American) (P/N 810003-007)  
Other Region-Specific, Certified Power Cords Available. Requires a Power Supply



Cable Management Bracket (P/N 600671-001)



Contactless Reader Module (P/N 010360-6xxR)



Communication Module (P/N 010360-1xxR)



Smart Card Reader Plug (P/N 600672-001)



Hypercom L5000 Developer's Toolkit CD (P/N 050270-00x)



Pressure-Activated Stylus Pen (P/N 040357-001) or Proximity Stylus Pen (P/N 040361-001)