

# APOLLO AiO

## INSTALLATION GUIDE

### WARNING

- Only use the provided Equinox Payments A/C Power Adapter. Non-compliant power adapters may damage the device.
- Do not use if visibly damaged.
- Do not expose to temperatures above 140 °F or 60 °C.
- Do not disassemble.
- Do not incinerate or crush.
- Do not power ON terminal in a flammable atmosphere (e.g., petrol station, chemical depot, etc.).
- Keep out of reach of children or pets.

### CAUTION

To reduce the risk of fire, use only No. 26 AWG or larger (e.g., 24 AWG) UL Listed or CSA Certified Telecommunication Line Cord.

### COMPLIANCE

Changes or modifications not expressly approved by the party responsible for compliance could void the user's authority to operate the equipment.

- FCC Part 15

This equipment has been tested and found to comply with the limits for a Class A digital device, pursuant to Part 15 of the FCC Rules. These limits are designed to provide reasonable protection against harmful interference when the equipment is operated in a commercial environment. This equipment generates, uses and can radiate radio frequency energy and, if not installed and used in accordance with the instruction manual, may cause harmful interference to radio communications. Operation of this equipment in a residential area is likely to cause harmful interference in which case the user will be required to correct the interference in which case the user will be required to correct the interference at his own expense.

The user is cautioned that changes or modifications not expressly approved by the party responsible for compliance could void the user's authority to operate this device.

- UL/cUL Listed
- RoHS Compliant
- CB
- PCI PED
- FCC ID: NVA00008
- FCC Part 68

This device complies with Part 68 of the FCC rules and the requirements adopted by the ACTA. On the underside of this device is a label that contains, among other information, a product identifier in the format US:AAAEQ##TXXXX.

If requested, this number must be provided to the telephone company.

### SAFETY INFORMATION

The Apollo family of devices must be used within the operating conditions, electrical supply requirements, environmental conditions and connection requirements as specified below:

- Power Supply: These devices must be connected to the correct electrical supply. Connection to an inappropriate supply may damage or destroy this device(s), thereby invalidating its warranty(s).
- Only operate these devices within the temperature range of 0 °C - 45 °C.
- Hazardous Environments: These devices must NOT be installed in locations where there is danger of explosion.
- Usage: Under normal operating conditions, the distance to use the device safely is approximately  $\geq 20$  cm from the body.

A plug and jack used to connect this device to the premises wiring and telephone network must comply with the applicable FCC Part 68 rules and requirements adopted by the ACTA. A compliant telephone cord and modular plug is provided with this device. It is designed to be connected to a compatible modular jack that is also compliant.

The REN is used to determine the number of devices that may be connected to a telephone line. Excessive RENs on a telephone line may result in the devices not ringing in response to an incoming call. In most but not all areas, the sum of RENs should not exceed five (5.0). To be certain of the number of devices that may be connected to a line, as determined by the total RENs, contact the local telephone company. The REN for this device is part of the product identifier that has the format US:AAAEQ##-TXXXX, where the digits represented by ## are the REN without a decimal point (e.g., 03 is a REN of 0.3). If this device causes harm to the telephone network, the telephone company will notify you in advance that temporary discontinuance of service may be required. But if advance notice isn't practical, the telephone company will notify the customer as soon as possible. Also, you will be advised of your right to file a complaint with the FCC if you believe it is necessary.

The telephone company may make changes in its facilities, equipment, operations or procedures that could affect the operation of this device. If this happens, the telephone company will provide advance notice in order for you to make necessary modifications to maintain uninterrupted service.

If trouble is experienced with this device, please contact Equinox Payments at 1.877.497.3726 for repair or warranty information. If this device is causing harm to the telephone network, the telephone company may request that you disconnect this device until the problem is resolved.

The user is not authorized to perform any service of this device.

Connection to party-line service is subject to state tariffs. Contact the state public utility commission, public service commission, or corporation commission for information.

# APOLLO AiO

## INSTALLATION GUIDE

Prints logos, barcodes and QR codes on receipts and reports

Full-color touchscreen

Backlit, ADA-style keypad layout with integrated PCI PTS-approved PIN Pad



Easy access to paper roll for fast replacement in seconds

Card reader features "intelligent illumination"

Standard EMV card reader

The Apollo All-in-One (AiO) is ideal for merchants requiring a single device for both merchant and consumer input. The AiO comes standard with a full-color touchscreen, 384MB of total memory, a powerful 400MHz ARM11 32-bit processor for fast transactions and the ability to support multiple applications.



# APOLLO AiO INSTALLATION GUIDE

## SHIPPING CONTENTS



Apollo AIO Terminal  
(020371-002E)



A/C Power Adapter  
(870082-001E)



RJ11 Cable (Phone)  
(810005-010)

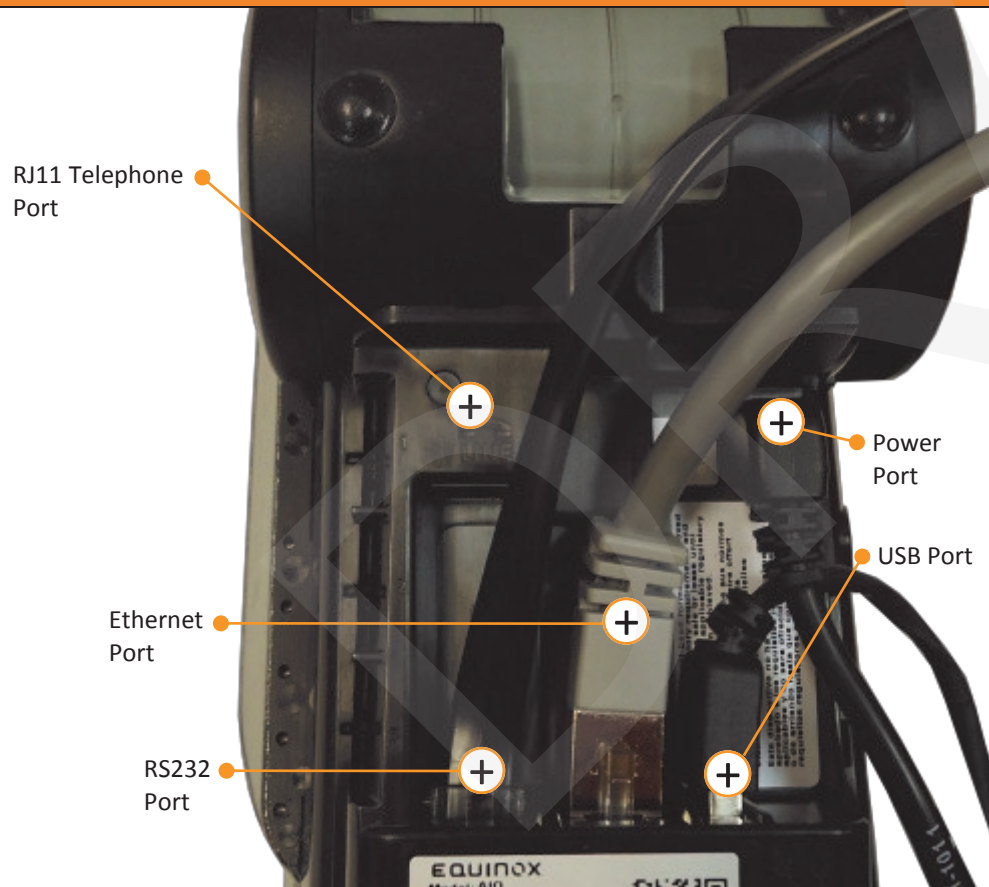


Paper Roll  
(710015-003)

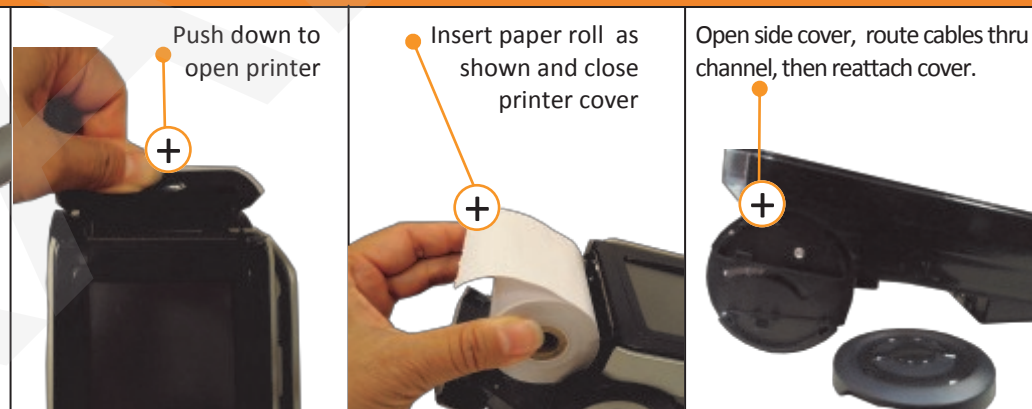
Additional cables available for purchase:

- RS232 cable
- Ethernet cable
- Mono cable

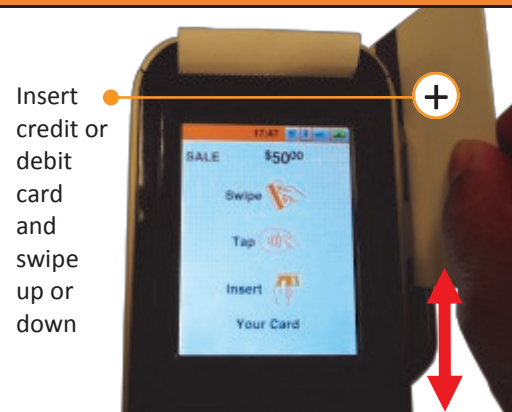
## POWER AND CABLE CONNECTIONS



## RECEIPT PAPER INSTALLATION



## SWIPE YOUR CARD



## INSERT SMART CARD

