

E-BTMU
Quick User Guide

1. Introduction

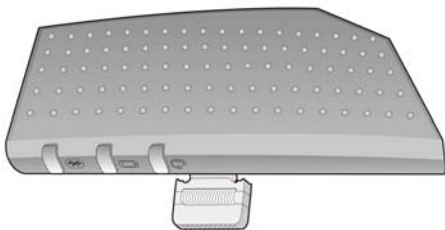
E-BTMU is the External Bluetooth module that can offer greater wireless mobility to LIP-8000E/IP8800E.

LIP-8012E/LIP-8024E/LIP-8040E and IP8820E/IP8830E/IP8840E support Handset or Speakerphone capability for Mobile Calls or WiFi(VoIP) Calls on smart phone as well as Bluetooth headset. They will support these features with an E-BTMU.

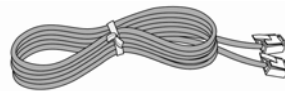
- Support Bluetooth Headset
- Linked with Smartphone via Bluetooth
- Select contact information on IP Phone via Phonebook profile

2. Checking the Items

Check if the following items are in the package.



E-BTMU



RJ9 cable



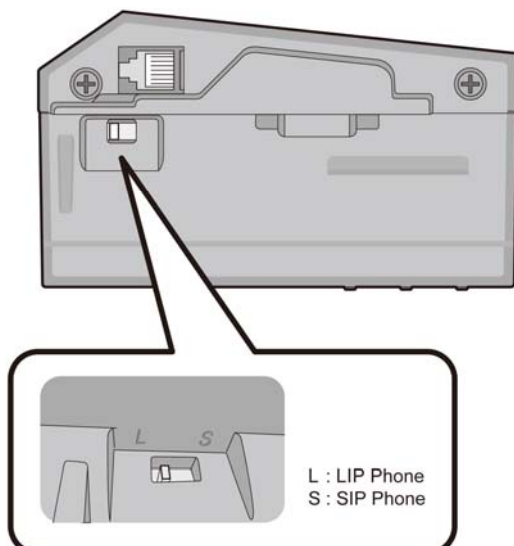
Screw

3. Installing E-BTMU

Before you install E-BTMU, it is important that you read the following note.

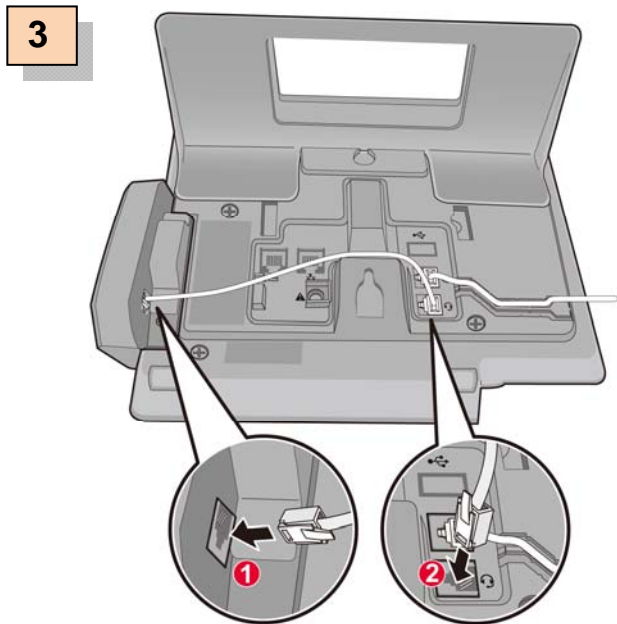
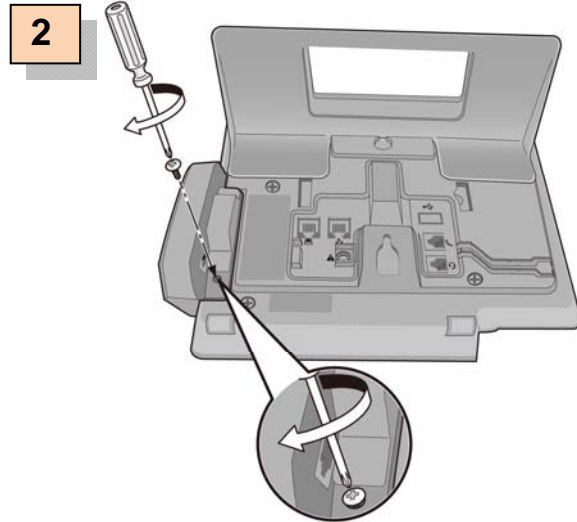
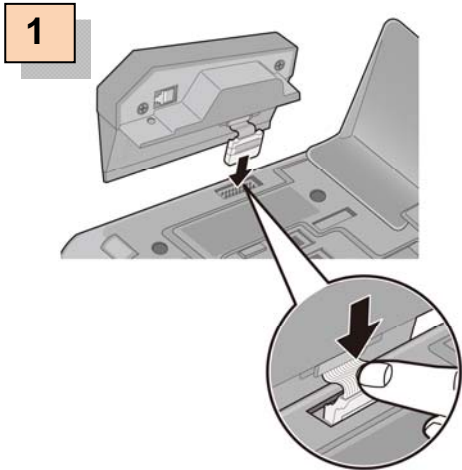
Note:

1. You can't install E-BTMU if DSS is using. You can install only E-BTMU or DSS; don't using both E-BTMU and DSS.
2. You select L or S before E-BTMU installs. You select L if you connect to LIP phone (LIP-8000E series), select S if you connect to SIP phone (IP8800E series).



The following steps are how to install E-BTMU

- 1) First, connect the cable to Phone with pushing Connector by finger securely.
- 2) Screw up E-BTMU to Phone.
- 3) Connect the RJ9 cable between E-BTMU and a Headset port at the rear of Phone.

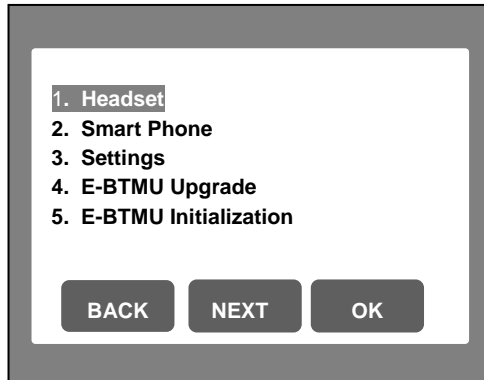


LED Indications

Indication	Color	Description
Bluetooth	RED	Bluetooth dongle is connected to IP phone
Smart phone	BLUE	Smart phone is connected to BT dongle
Headset	BLUE	Headset is connected to BT dongle

4. Installing E-BTMU (for LIP-8000E Series)

After installing E-BTMU and Phone has power, the following appears on the LCD.



4.1 Using Headset

4.1.1 Paring and connecting the device

In case of there is no paired device:

- 1) The message 'No paired Headset' is displayed.
- 2) Set a Bluetooth headset to be discoverable.
- 3) Press Soft button 'Search'.
- 4) The available devices list is displayed.
- 5) Press Soft button 'CONN' to select the device among the list.
- 6) The message 'Connecting Success and Connected' is displayed if the connection is successful.

In case of the device is paired and disconnected:

- 1) Press Soft button 'CONN' to connect the device.

4.1.2 Deleting the device

- 1) Disconnect the connected Bluetooth headset first.
- 2) Select the device and press Soft button 'DELETE'.

4.1.3 Disconnecting the device

- 1) Select the device and press Soft button 'DISC'.

4.2 Using Smart Phone

4.2.1 Paring and connecting the device

In case of there is no paired device:

- 1) The message 'No paired Smart phone' is displayed.
- 2) Set a smart phone to be discoverable.
- 3) Press Soft button 'Search'.
- 4) The available devices list is displayed.

- 5) Press Soft button 'CONN' to select the device among the list.
- 6) The message 'Connecting Success and Connected' is displayed if the connection is successful.

In case of the device is paired and disconnected:

- 1) Press Soft button 'CONN' to connect the device.

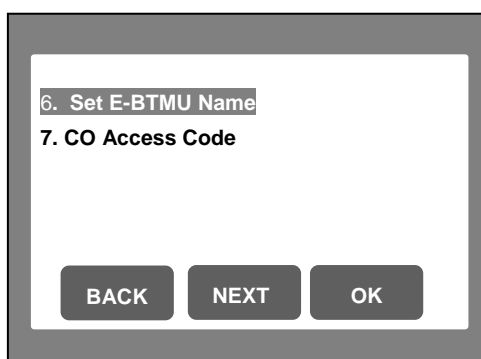
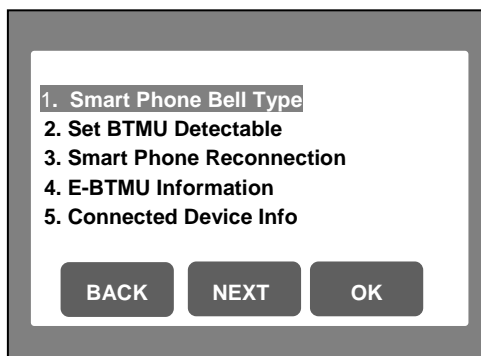
4.2.2 Deleting the device

- 1) Disconnect the connected smart phone first.
- 2) Select the device and press Soft button 'DELETE'.

4.2.3 Disconnecting the device

- 1) Select the device and press Soft button 'DISC'.

4.3 Setting up the following menu



4.3.1 Setting up Smart phone Bell type

There are 8 bell types from 1 to 8. Select the bell type and press Soft button 'OK'.

4.3.2 Setting up E-BTMU Detectable

If you select Set E-BTMU Detectable, Your phone is visible on other Smart phone and can be paired with Smart phone as long as this menu is displayed. If your phone is connected with any Bluetooth device, you need to disconnect it first before set to be discoverable.

4.3.3 Setting up Smart Phone Reconnection

If Reconnection mode is enabled, E-BTMU can be connected to Headset or Smart phone automatically after disconnection.

4.3.4 Showing E-BTMU Information

You can see the version & the MAC address of E-BTMU.

4.3.5 Showing Connected Device Info

You can check the information of which device is connected to.

4.3.6 Setting up E-BTMU Name

You can change the E-BTMU name.

4.3.7 CO Access Code

You can set the CO access code for making a call using the phonebook of the smart phone.

4.4 Upgrading E-BTMU

You upgrade E-BTMU via FTP Server as the following steps:

- 1) Select E-BTMU Upgrade and then search for Device.
- 2) After searching the device, press Soft button 'UPGRADE'.
- 3) Download start if the device needs to be upgrade.
- 4) Phone and E-BTMU will reboot automatically after upgrade successfully.

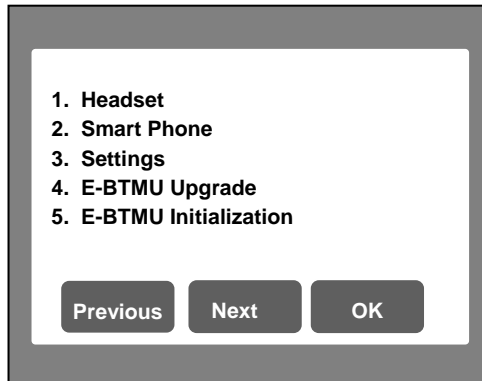
4.5 Initializing E-BTMU

The following requirements need to be set before initializing E-BTMU.

- 1) All paired and connected devices are deleted.
- 2) Smart phone reconnection is set as Disabled.
- 3) The bell type is 1.
- 4) The ring volume is set as 5. The ring volume is from 1 to 11.
- 5) The hands-free Rx volume of Smart phone is set as 5.
- 6) The volume of Smart phone is set as 5.

5. Installing E-BTMU (for IP8800E Series)

After installing E-BTMU, Phone has power, and selects the menu, “3. Phone Settings” → “13. Bluetooth”, the following appears on the LCD.
(The menu number can be changed.)



5.1 Using Headset

5.1.1 Paring and connecting the device

In case of there is no paired device:

- 1) The message 'No Paired Headset' is displayed.
- 2) Set a Bluetooth headset to be discoverable.
- 3) Press Soft button 'Search'.
- 4) The available devices list is displayed.
- 5) Press Soft button 'Connect' to select the device among the list.
- 6) The message 'Headset is connected' is displayed if the connection is successful.

In case of the device is paired and disconnected:

- 1) Press Soft button 'Connect' to connect the device.

5.1.2 Deleting the device

- 1) Disconnect the connected Bluetooth headset first.
- 2) Select the device and press Soft button 'Delete'.

5.1.3 Disconnecting the device

- 1) Select the device, press Soft button 'Disconn'.

5.2 Using Smart Phone

5.2.1 Paring and connecting the device

In case of there is no paired device:

- 1) The message 'No Paired Smart Phone' is displayed.
- 2) Set a smart phone to be discoverable.
- 3) Press Soft button 'Search'.
- 4) The available devices list is displayed.
- 5) Press Soft button 'Connect' to select the device among the list.
- 6) The message 'Smart Phone is connected' is displayed if the connection is successful.

In case of the device is paired and disconnected:

- 1) Press Soft button 'Connect' to connect the device.

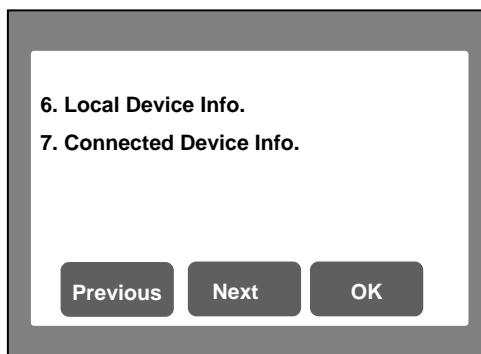
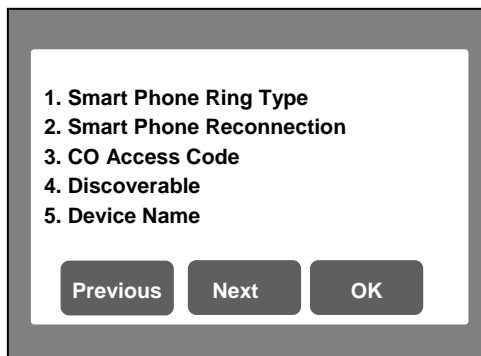
5.2.2 Deleting the device

- 1) Disconnect the connected smart phone first.
- 2) Select the device and press Soft button 'Delete'.

5.2.3 Disconnecting the device

- 1) Select the device and press Soft button 'Disconn'.

5.3 Setting up the following menu



5.3.1 Setting up Smart Phone Ring Type

There are 8 ring types and it also supports the ringer off and the default ring. Select the ring type and press Soft button 'OK'.

5.3.2 Setting up Smart Phone Reconnection

If Reconnection mode is enabled, E-BTMU can be connected to Headset or Smart phone automatically after disconnection.

5.3.3 CO Access Code

You can set the CO access code for making a call using the phonebook of the smart phone.

5.3.4 Setting up E-BTMU Discoverable

If you select E-BTMU Discoverable, your phone is visible on other Smart phone and can be paired with Smart phone as long as this menu is displayed. If your phone is connected with any Bluetooth device, you need to disconnect it first before set to be discoverable.

5.3.5 Setting up E-BTMU Name

You can change the E-BTMU name.

5.3.6 Showing E-BTMU Information

You can see the version & the MAC address of E-BTMU.

5.3.7 Showing Connected Device Info

You can check the information of which device is connected to the phone.

5.4 Upgrading E-BTMU

You upgrade E-BTMU via FTP Server as the following steps:

- 1) Select E-BTMU Upgrade and then search for Device.
- 2) After searching the device, press Soft button 'Upgrade'.
- 3) Download start if the device needs to be upgraded.
- 4) Phone and E-BTMU will reboot automatically after upgrade successfully.

5.5 Initializing E-BTMU

The following requirements need to be set before initializing E-BTMU.

- 1) All paired and connected devices are deleted.
- 2) Smart phone reconnection is set as Disabled.
- 3) The ring type is set to the "Default Ring".
- 4) The hands-free Rx volume of Smart phone is set as 5.

5) The volume of Smart phone is set as 5.

6. Using Bluetooth Headset

If the speaker mode is set as BT and the Bluetooth headset is connected to the phone, you can make or receive a call via Bluetooth headset.

7. FCC Notice

Class B

FCC Information to User

This equipment has been tested and found to comply with the limits for a Class B digital device, pursuant to Part 15 of the FCC Rules. These limits are designed to provide reasonable protection against harmful interference in a residential installation. This equipment generates, uses and can radiate radio frequency energy and, if not installed and used in accordance with the instructions, may cause harmful interference to radio communications. However, there is no guarantee that interference will not occur in a particular installation. If this equipment does cause harmful interference to radio or television reception, which can be determined by turning the equipment off and on, the user is encouraged to try to correct the interference by one of the following measures:

- Reorient or relocate the receiving antenna.
- Increase the separation between the equipment and receiver.
- Connect the equipment into an outlet on a circuit different from that to which the receiver is connected.
- Consult the dealer or an experienced radio/TV technician for help.

Caution

Modifications not expressly approved by the party responsible for compliance could void the user's authority to operate the equipment.

FCC Compliance Information : This device complies with Part 15 of the FCC Rules. Operation is subject to the following two conditions: (1) This device may not cause harmful interference, and (2) this device must accept any interference received, including interference that may cause undesired operation

IMPORTANT NOTE:

FCC RF Radiation Exposure Statement:

This equipment complies with FCC RF radiation exposure limits set forth for an uncontrolled environment. This equipment should be installed and operated with a minimum distance of 20 centimeters between the radiator and your body. This transmitter must not be co-located or operating in conjunction with any other antenna or transmitter.