



GSM Fixed Wireless Phone

| LGP-450A | User Guide

Please read this manual carefully before operating your set.
Retain it for future reference.

P/NO : MMBBxxxxx
APR/2010/ISSUE xx

LG-Nortel Co.Ltd.

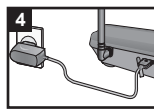
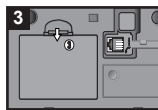
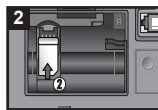
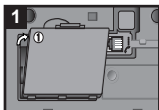
Installing the SIM Card and Charging the Battery

Installing the SIM Card

When you subscribe to a cellular network, you are provided with a plug-in SIM card loaded with your subscription details, such as your PIN, any optional services available and many others.

Important!

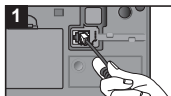
- ▶ *The plug-in SIM card and its contacts can be easily damaged by scratches or bending, so be careful when handling, inserting or removing the card. Keep all SIM cards out of the reach of small children.*
- ▶ To remove, push the back cover down. Push the tab with one hand and lift the top of the battery to separate.



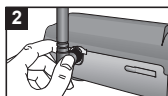
Fully charge the battery before using it for the first time.

Installing Main Phone

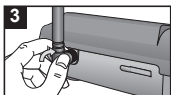
Please follow the procedure below to install the phone properly.



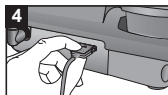
Connect basehandset to the handset connector.



Connect the antenna to the TNC connector (Turn right).





Turn the antenna upright.






Connect the AC power supply.

Basic Operation

Turning Your Phone On and Off



1. Hold down the  [END/PWR] key until the phone switches on.
2. To switch the phone off, hold down the  [END/PWR] key until the power-off image displays.

Making a Call

1. Pick up the handset or press  [Speaker Phone] key.
2. Listen for dial tone and enter the phone number.
3. Wait for the Auto Time-out or press  [Dial/Flash] key.
4. The call is connected and you may start conversation.
5. To disconnect the call, replace the handset or press  [Speaker Phone] key.




Answering a Call

When the bell rings in idle state, you can receive a call as follows:




1. Pick up the handset or press the  [Speaker Phone] key.
2. Start a conversation. To disconnect the call, replace the handset or press the  [Speaker Phone] key.

Note After the call ends, the phone will go back to standby mode.

Making an International Call

1. Pick up the handset or press  [Speaker Phone] key.
2. Listen for dial tone.
3. Press and hold the  key for the international prefix. The '+' character automatically selects the international access code.
4. Enter the country code, area code, and the phone number.
5. The call is connected and you may start conversation.
6. To disconnect the call, replace the handset or press  [Speaker Phone] key.

Redialing Last Number

1. Pick up the handset or press  [Speaker Phone] key.
2. Listen for dial tone.
3. Press  [Dial/Flash] key.
4. The call is connected and you may start conversation.
5. To disconnect the call, replace the handset or press  [Speaker Phone] key.

3-way Call Conferencing

3-way Call Conferencing

Method 1

1. Enter the phone number of the 2nd party phone while you are in telephonic conversation with 1st party.
2. Press **[Dial/Flash]** key. And press **[Dial/Flash]** key again.

Method 2

1. Press **[Dial/Flash]** key while you are in telephonic conversation with 1st party.
2. If you listen to the dialing tone, Press the phone number of the 2nd party phone.
3. Press **[Dial/Flash]** key.
4. And press **[Dial/Flash]** key again.

This service should be provided by your service provider.

Call Wait

1. Press **[Dial/Flash]** key, you may start conversation with called number.
2. Re-press **[Dial/Flash]** key, you may start conversation with previous number.

Volume Control

1. Press **[Left]/[Right]** key of navigation while in a call, to adjust speaker volume.
2. Press Option + Left Soft Key to prevent sound from your end during the call. To cancel Mute, Press again + Left Soft Key.

Memo

Allow you to store number during the call.


To store number :

1. Press Option + 4(New Memo).
2. Enter up to 32 numbers using the keypad.
3. Press OK key to save.

Lock Mode

1. You can use a security code to avoid unauthorized use of the phone.
Press soft Left(Menu) + 4(Setting) + 6(Security) + 2(Phone Lock).
2. The phone is now locked. To unlock, press and enter lock code(Default 0000).

Entering Text

You can enter alphanumeric characters by using the phone's keypad. To change modes, press the  key.

T9 Mode

This mode allows you to enter words with only one keystroke per letter. Each key on the keypad has more than one letter. The T9 mode automatically compares your keystrokes with an internal linguistic dictionary to determine the correct word, thus requiring far fewer keystrokes than the traditional ABC mode.

ABC Mode

This mode allows you to enter letters by pressing the key labeled with the required letter once, twice, three or four times until the letter is displayed.

123 Mode (Numbers Mode)

Type numbers using one keystroke per number.

Symbol Mode

This mode allows you to enter special characters by pressing  key.





Quick feature reference

This section provides brief explanations of features on your phone.

Messaging Menu 1




This menu includes functions related to SMS (Short Message Services).

New message You can create functions related to SMS (Short Message Services).

Press soft Left() + 1() + 1() or  button.

Inbox

You will be alerted when you have received a message.

Press soft Left() + 1() + 2().

- Drafts** This menu shows the preset message list.
Press soft Left(Menu) + 1(Messaging) + 3(Drafts) .
- Outbox** This menu allows to view the message which is about to be sent or has failed to be sent.
Press soft Left(Menu) + 1(Messaging) + 4(Outbox) .
- Sent** This menu allows you to view the messages which have already been sent, including time and content.
Press soft Left(Menu) + 1(Messaging) + 5(Sent) .
- Listen voice mail** This menu provides you with a quick way of accessing your voice mailbox (if provided by your network).
Press soft Left(Menu) + 1(Messaging) + 6(Listen voice mail) .
- Info messages** Info service messages are text messages delivered by the network to your handset.
Press soft Left(Menu) + 1(Messaging) + 7(Info messages) .
- Templates** There are pre-defined messages in the list. You can view and edit the template messages or create new messages.
Press soft Left(Menu) + 1(Messaging) + 8(Templates) .
- Settings** This menu allows you to set features of your network service provider.
Press soft Left(Menu) + 1(Messaging) + 9(Settings) .
- Contacts** Menu 2
- Search** You can Search for contacts in Phonebook.

Note: Instant searching is available by inputting the initial letter of the name you want to search.

Press soft Left(**Menu**) + 2(**Contacts**) + 1(**Search**) or **Contacts** button.

New contact You can add phonebook entries by using this menu.

Press soft Left(**Menu**) + 2(**Contacts**) + 2(**New contact**).

Speed dials Assign contacts to any of keys from 2 to 9.

Press soft Left(**Menu**) + 2(**Contacts**) + 3(**Speed dials**).

Copy all You can copy all entries from SIM card memory to Phone memory or from Phone memory to SIM card memory.

Press soft Left(**Menu**) + 2(**Contacts**) + 4(**Copy all**).

Delete all You can delete all entries from SIM card memory or Phone memory.

Press soft Left(**Menu**) + 2(**Contacts**) + 5(**Delete all**).

Memory status You can check free space and memory usage.

Press soft Left(**Menu**) + 2(**Contacts**) + 6(**Memory status**).

Information ▶ **Service dial number**

Access the list of service numbers assigned by service provider safely.

Press soft Left(**Menu**) + 2(**Contacts**) + 7(**Information**) + 1(**Service dial number**).

▶ **Own numbers**

You can save and check your own numbers in SIM card.

Press soft Left(Menu) + 2(Contacts) + 7(Information) + 2(Own number).

► **Business card**

This option allows you to create your own business card featuring your name, mobile phone number and so on.

Press soft Left(Menu) + 2(Contacts) + 7(Information) + 3(Business card).

Call history Menu 3

You can check the record of missed, received, and dialled calls only if the network supports the Calling Line Identification (CLI) within the service area. The number and name (if available) are displayed together with the date and time at which the call was made. You can also view call durations.

All calls Displays all the lists of three types (Received/Dialled/Missed calls) by time.

Press soft Left(Menu) + 3(Call history) + 1(All calls) or Dial/Flash button.

Missed calls This option lets you view the last 20 unanswered calls.

Press soft Left(Menu) + 3(Call history) + 2(Missed calls).

Dialled calls This option lets you view the last 20 outgoing calls (called or attempted).

Press soft Left(Menu) + 3(Call history) + 3(Dialled calls).

Received calls This option lets you view the last 20 incoming calls.

Press soft Left(Menu) + 3(Call history) + 4(Received calls).

Call duration Allows you to view the duration of your incoming and outgoing calls.

Press soft Left(Menu) + 3(Call history) + 5(Call duration).

Settings Menu 4

You can set the following menus for your convenience and preferences.

Sound This menu allows you to set sound such as Ring Type, Ring Tones, Ring Volume, Message Alert Type, Message Tones, Keypad Tones, Key Volume, Effect Sound Volume, Power On/Off Volume and Speaker Volume.

Press soft Left(**Menu**) + 4(**Settings**) + 1(**Sound**) or **Sound** button.

Date & Time This menu allows you to set date and time.

Press soft Left(**Menu**) + 4(**Settings**) + 2(**Date & Time**).

Language This menu allows you to select language between English and Spanish.

Press soft Left(**Menu**) + 4(**Settings**) + 3(**Language**).

Display This menu allows you to set the display such as Backlight Time and Contrast Network Name On/Off.

Press soft Left(**Menu**) + 4(**Settings**) + 4(**Display**).

Call This menu allows you to set the call such as Call Divert, Send My Number, Call Waiting, Minute Minder, Send DTMF and Autodial Time out.

Press soft Left(**Menu**) + 4(**Settings**) + 5(**Call**).

Security This menu allows you to set the phone safely.

▶ **PIN code request**

You can set the phone to ask for the PIN code of your SIM card when the phone is switched on.

Press soft Left(**Menu**) + 4(**Setting**) + 6(**Security**) + 1(**Pin code request**).

▶ **Phone lock**

You can use a security code to avoid unauthorized use of the phone.

Press soft Left(Menu) + 4(Settings) + 6(Security) + 2(Phone lock).

► **Call barring**

The Call barring service prevents your phone from making or receiving a certain category of calls. This function requires the call barring password.

Press soft Left(Menu) + 4(Settings) + 6(Security) + 3(Call barring).

► **Fixed dial number(SIM dependent)**

You can restrict your outgoing calls to selected phone numbers. The numbers are protected by your PIN2 code. The numbers you wish to allow access to once this service has been enabled, must be added to the contacts after enabling Fixed dial number.

Press soft Left(Menu) + 4(Settings) + 6(Security) + 4(Fixed dial number).

► **Change codes**

PIN is an abbreviation of Personal Identification Number to prevent use by unauthorized persons. You can change the access codes: Security code, PIN code, PIN2 code.

Press soft Left(Menu) + 4(Settings) + 6(Security) + 5(Change codes).

Network selection You can select a network that will be registered either automatically or manually. Usually, the network selection is set to Automatic.

Press soft Left(Menu) + 4(Settings) + 7(Network selection).

Reset settings You can initialize all setting values as defaults. You need a Security code to activate this function.

Press soft Left(Menu) + 4(Settings) + 8(Reset settings).

Memory status You can check free space and memory usage of each repository.

Press soft Left(Menu) + 4(Settings) + 9(Memory status).

Alarm Menu 5

Allows you to set one of three alarms. The current time is displayed at the top of the screen when

you select an alarm to set. At the alarm time, the Alarm icon will be displayed on the LCD screen and the alarm will sound.

Press soft Left(Menu) + 5(Alarm) or Alarm button.

Organizer Menu 6

Calendar When you enter this menu a calendar will pop up. On top of the screen there are sections for dates. Whenever you change the date, the calendar will be updated accordingly. If you see a marked date in the calendar, it means that there is a schedule that day. This function helps to remind you of your schedule. The phone will sound an alarm tone if you set this for the note. See the upper left for further details.

Press soft Left(Menu) + 6(Organizer) + 1(Calendar) or Calendar button.

Memo You can create a list of tasks.

Press soft Left(Menu) + 6(Organizer) + 2(Memo).

Tools Menu 8

Calculator This contains the standard functions such as +, -, x, ÷ : **Addition, Subtraction, Multiplication and Division.**

Press soft Left(Menu) + 7(Tools) + 1(Calculator).

Stopwatch Stopwatch is available just as common stopwatches we see and use in daily life.

Press soft Left(Menu) + 7(Tools) + 2(Stopwatch).

Unit Converter This converts any measurement into a unit you want.

Press soft Left(Menu) + 7(Tools) + 3(Unit Converter).

World clock Allows you to determine the current time in another time zone or country.

Press soft Left(Menu) + 7(Tools) + 4(World clock).

Troubleshooting

Please check the following items before contacting service center.

Item	Remedy
Phone doesn't operate at all.	<ul style="list-style-type: none">• Check that the phone is installed correctly.• Check that the battery is fully charged.• Check that the power is on.
Because of noise and cross talking, call status is bad.	Keep away from electrical application such as TV, computer, radio and so on.
When I press button to call, can't hear the dial tone.	Check that phone cord or power is connected correctly.
Phone does not switch on.	Check that the battery is fully charged and correctly connected to the phone.
Emergency calls cannot be made.	Check that the antenna symbol is displayed.-Move to the coverage area and operate your phone when the antenna symbol is displayed.
Battery fails to charge.	Ensure that adapter is approved LGP-450A adapter.
Bell sound isn't heard.	If bell sound is low, please adjust the volume level.

Guidelines for safe and efficient use

Product care and maintenance

WARNING!

Only use batteries, chargers and accessories approved for use with this particular phone model. The use of any other types may invalidate any approval or warranty applying to the phone, and may be dangerous.

- ▶ Do not disassemble this unit. Take it to a qualified service technician when repair work is required.
- ▶ The unit should be kept away from heat sources such as radiators or cookers.
- ▶ Use a dry cloth to clean the exterior of the unit. (Do not use any solvents.)
- ▶ Do not keep the phone next to credit cards or transport tickets; it can affect the information on the magnetic strips.

Efficient phone operation

To enjoy optimum performance with minimum power consumption please:

- ▶ Hold the phone as you would any other telephone.

Electronic devices

Fixed wireless phone may get interference, which could affect performance.

- ▶ Do not use your mobile phone near medical equipment without requesting permission. Avoid placing the phone over a pacemaker.

Blasting area

Do not use the phone where blasting is in progress. Observe restrictions, and follow any regulations or rules.

Potentially explosive atmospheres

- ▶ Do not use the phone at a refueling point. Do not use near fuel or chemicals.

Children

Keep the phone in a safe place out of children's reach. It includes small parts which if detached may cause a choking hazard.

Battery information and care

You do not need to completely discharge the battery before recharging. Unlike other battery systems, there is no memory effect that could compromise the battery's performance.

- ▶ Use only LG-Nortel batteries and chargers. LG-Nortel chargers are designed to maximize the battery life.
- ▶ Do not disassemble or short-circuit the battery pack.
- ▶ Replace the battery when it no longer provides acceptable performance. The battery pack may be recharged hundreds of times before it needs to be replaced.
- ▶ Do not expose the battery charger to direct sunlight or use it in high humidity, such as the bathroom.

Caution

- ▶ Risk of explosion if battery is replaced by an incorrect type.
- ▶ Dispose of used batteries according to the instructions.

AC/DC Adapter

Use only with adaptor provided by LG-Nortel Co.Ltd.

Regulatory Statements to be included in the Users Guide for Sputnik

USA-Federal Communications Commission (FCC)

This device complies with part 15 of the FCC Rules. Operation is subject to the following two conditions: (1) This device may not cause harmful interference, and (2) this device must accept any interference received, including interference that may cause undesired operation.

This equipment has been tested and found to comply with the limits for a Class B digital device, pursuant to Part 15 of FCC Rules. These limits are designed to provide reasonable protection against harmful interference in a residential installation. This equipment generates, uses, and can radiate radio frequency energy. If not installed and used in accordance with the instructions, it may cause harmful interference to radio communications. However, there is no guarantee that interference will not occur in a particular installation.

If this equipment does cause harmful interference to radio or television reception, which can be determined by tuning the equipment off and on, the user is encouraged to try and correct the interference by one or more of the following measures:

- Reorient or relocate the receiving antenna
- Increase the distance between the equipment and the receiver.
- Connect the equipment to outlet on a circuit different from that to which the receiver is connected.
- Consult the dealer or an experienced radio/TV technician for help.

Any changes or modifications not expressly approved by the party responsible for compliance could void the user's authority to operate the equipment.

Caution: Exposure to Radio Frequency Radiation.

To comply with FCC RF exposure compliance requirements, for mobile configurations, a separation distance of at least 20 cm must be maintained between the antenna of this device and all persons.

This device must not be co-located or operating in conjunction with any other antenna or transmitter.

General Information

Main Unit

Item	LGP-450A
Frequency Band	GSM850/GSM1900
Tx Power	33/30dBm
Rx Sensitivity	-104dBm
Size(mm)	220(W) x 120(D) x 81(H) (with handset)
Weight (gms)	480 gram (without battery)
Operating Temperature	-10 °C ~ 45 °C

AC/DC Adapter

Item	Type Description
Input Voltage	100~240Vac(Normal)
Input Frequency	50/60Hz
Output Voltage, Current	5.0 Vdc/700mA

Battery

Item	Type Description
Capacity	Li-ion 3.7V / 1200mAh
Talk time / Standby time	Over 4 Hours / Over 200 Hours
Charging time duration	4 Hours