

LIP-9070

Quick Installation Guide

Internet version of the User guide can be downloaded in PDF format from www.ericssonlg.com

Issue date: October 2012
Issue 1.0
Printed in Thailand.



Part No: MMBB9242201

READ THIS INSTALLATION INSTRUCTIONS CAREFULLY BEFORE
INSTALLING THE PHONE.

Regulatory Notes

FCC/IC Interference Statement

This equipment has been tested and found to comply with the limits for a Class B digital device, pursuant to part 15 of the FCC Rules. These limits are designed to provide reasonable protection against harmful interference in a residential installation. This equipment generates, uses and can radiate radio frequency energy and, if not installed and used in accordance with the instructions, may cause harmful interference to radio communications. However, there is no guarantee that interference will not occur in a particular installation. If this equipment does cause harmful interference to radio or television reception, which can be determined by turning the equipment off and on, the user is encouraged to try to correct the interference by one or more of the following measures:

- Reorient or relocate the receiving antenna.
- Increase the separation between the equipment and receiver.
- Connect the equipment into an outlet on a circuit different from that to which the receiver is connected.
- Consult the dealer or an experienced radio/TV technician for help.

This device complies with part 15 /RSS-GEN of the FCC/IC rules. Operation is subject to the following two conditions:

- (1) This device may not cause harmful interference; and
- (2) This device must accept any interference received, including interference that may cause undesired operation.

This Class B digital apparatus complies with Canadian ICES-003.

Cet appareil numérique de la classe B est conforme à la norme NMB-003 du Canada.

The use of this device in a system operating either partially or completely outdoors may require the user to obtain a license for the system according to the Canadian regulations.

CAUTION: Any changes or modifications in construction of this device which are not expressly approved by the party responsible for compliance could void the user's authority to operate the equipment.

European Union Declarations of Conformity

Ericsson-LG Co.,Ltd. declare that the equipment specified in this document bearing the "CE" mark conforms to the European Union Radio and Telecommunications Terminal Equipment Directive (R&TTE 1999/5/EC), including the Electromagnetic Compatibility Directive (2004/108/EC) and Low Voltage Directive (2006/95/EC).

Copies of these Declarations of Conformity (DoCs) can be obtained by contacting your local sales representative.

Contact Information

Please contact your Ericsson-LG authorized distributor or reseller for technical assistance.
<http://www.ericssonlg.com>

Copyright

© 2012 Ericsson-LG Co., Ltd. All Rights Reserved.

This material is copyrighted by Ericsson-LG Co., Ltd. Any unauthorized reproductions, use or disclosure of this material, or any part thereof, is strictly prohibited and is a violation of Copyright Laws.

Ericsson-LG reserves the right to make changes in specifications at any time without notice.

The information furnished by Ericsson-LG in this material is believed to be accurate and reliable, but is not warranted to be true in all cases.

Installations

This document provides information about the LIP-9070. You can download all required documents at www.ericssonlg.com.

Unpacking the Phone

Carefully unpack your phone, be sure you have received each item in the following list:

- LIP-9070 Station
- Corded Handset
- Pedestal Stand (with the Line Cord Cover)
- LAN Ethernet Cable
- Quick Installation Guide

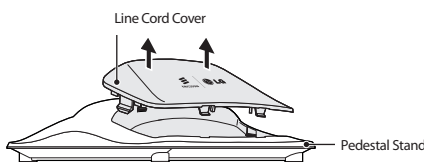
Installing the Phone

Your phone should be placed on a level surface near an electrical outlet, such as a desk or table top. The angle of the phone is set by the attachment of the provided pedestal stand in one of two positions, Low (40°) or High (60°) for desk or table top use. The angles are marked on the pedestal stand.

To attach the pedestal stand:

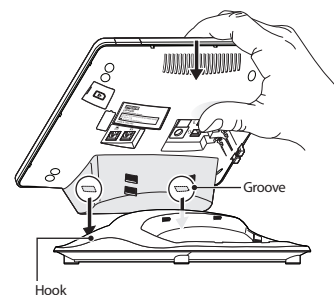
Choose the desired angle that provides the best screen readability and easy control operation for the phone's location.

- Lift the cover straight up and remove it from the pedestal stand if necessary.



- Your LIP-9070 Station has grooves on its surface to align the grooves with the hooks in the pedestal stand.

- Push the Station downward in the slot as far as it can go until properly attached.



Connecting the Handset and Headset

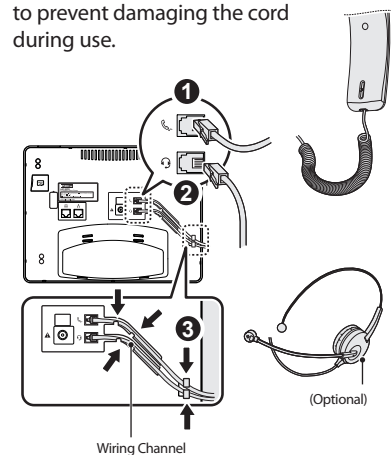
To connect the handset:

- 1 Connect the end of the handset cord to the handset jack marked with the symbol.

Note: Identify the handset as being able to magnetically retain small sharp objects, (such as pins & paperclips).

To connect the headset (Optional):

- 2 Connect the headset cord to the headset jack marked with the symbol.
- 3 Thread all cords through the wiring channel to prevent damaging the cord during use.



Connecting the Network and Power

The phone supports both AC power or PoE (Power over Ethernet) in accordance with the IEEE-802.3af Class 3 standard. To use AC power, you can order the optional AC adapter separately. To use PoE, the LAN must support PoE.

CAUTION: Do not attempt to use AC power and PoE at the same time.

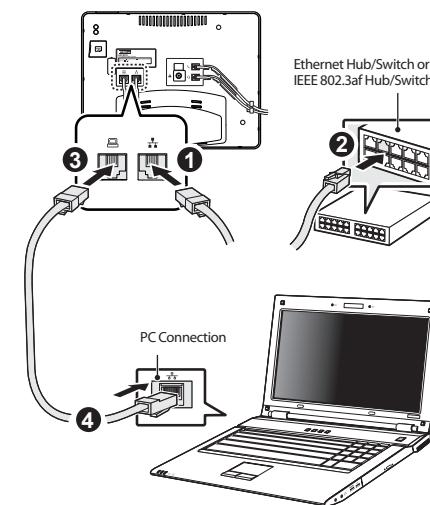
To connect the network:

- 1 Connect one end of the supplied LAN Ethernet cable to the phone marked with the symbol.
- 2 Connect the other end of the cable to your LAN Ethernet connection. (Do not extend the LAN Ethernet cable to the outside of the building.)

Note: Skip instructions 5 and 6, if you are connected to a PoE.

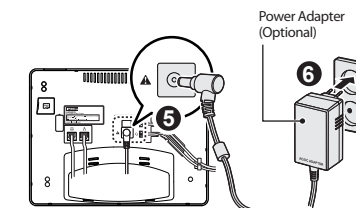
To connect the PC (Optional):

- 3 Connect one end of the PC Ethernet cable (not included) to the phone marked with the symbol.
- 4 Connect the other end of the cable to the LAN port on your computer.



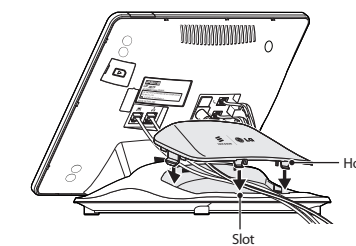
To connect the power (Optional):

- 5 Connect the AC adapter (not included) to the AC adapter jack.
- 6 Plug the AC adapter to the outlet.



To attach the line code cover

- Ensure all cables are properly routed to where the space between the cover and the pedestal stand (as shown in the picture, below).
- Insert the cover making sure the hooks of the cover aligns correctly with the slot in the pedestal.



- Push down firmly on the cover until it snaps into place and each hooks are fully closed.

Note: Visually check that each cable is correctly routed, such as CAT5 Ethernet cable, PC Ethernet cable, and AC adaptor cord.

