



CDMA Fixed Wireless Phone

LSP-450 | User Guide

Please read this manual carefully before operating your set.
Retain it for future reference.



P/NO : MMBB9223301

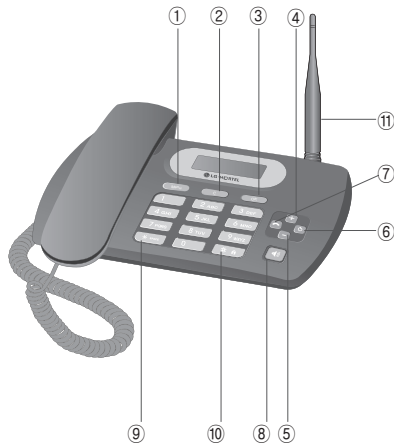
MAR/2009/ISSUE 1.1

LG-Nortel Co.Ltd.

Introduction

1. Introduction

1.1 Front View of the Phone



- ① Menu : Activates Main Menu state.
- ② Clear : Deletes the last digit, or moves previous Menu.
- ③ OK : Used to store an entry or to accept a command.
- ④ Up Key (+) : Moves up in the Menu or Volume Up.
- ⑤ Down Key (-) : Moves down in the Menu or Volume Down.
- ⑥ END/PWR : Deactivates states, or Power ON/OFF.
- ⑦ Redial/Flash : Activates Redial/Flash state, or views CallHistory.
- ⑧ (📞) : Activates hands free function.
- ⑨ '*': Inputs Symbol '*', or makes a phone input 'SPACE' during text entry operation.
- ⑩ '#': Inputs Symbol '#', or makes a phone lock after long-press.
- ⑪ Attached Antenna.

Introduction

1.2 LCD Display

The LCD shows icons on the top of the LCD screen.

Different indicators appear based on the phone's operating mode.



Icon	Operating Condition
	RSSI Indicator : Indicates the signal strength in the service area.
	No Service : The phone is not receiving any system signal.
	In Use : Displayed when a call is in progress or the phone is in off-hook state.
	Text Message : Displayed when a text message is received.
	Voice Message : Displayed when voice message is received.
	Alarm : Displayed when alarm time is set.
	Roaming : Indicate the roaming service area.
	Battery Charge Level : Indicates charged battery level.

1.3 Installation

You should follow each step carefully as shown below in order to guarantee the proper operation of CDMA Fixed Wireless Phone.



Main Phone



Dipole Antenna



AC/DC Power Adapter



User Guide

Introduction

STEP I. Check Components

- ▶ The following components are supplied Fixed Wireless Phone.
 1. LSP-450 Main Phone with Handset
(Including inner backup battery) -1EA-
 2. Dipole Antenna- -1EA-
 3. AC/DC Power Adapter -1EA-
 4. User Guide -1EA-
- ▶ Please make sure that these components are present before you begin to install the phone. If any of the components are missing or damaged, contact your service provider immediately.

STEP II. Place the Terminal

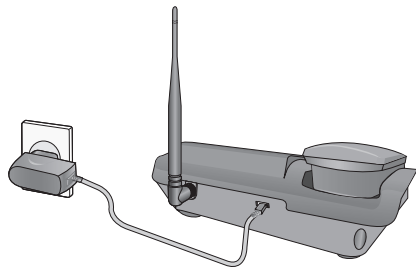
- ▶ Place the phone on the stable flat surface area (desk, table, etc). Serious damage may result if the phone is dropped. Do not place the phone within 1 meter of heaters or radiators.
- ▶ This phone is designed for desktop usage. Avoid the direct exposure to sunlight and dampness.
- ▶ Read the SAFETY INFORMATION located in the first part of this document before you place the phone.

STEP III. Connect Components

(Please refer to “Installation Steps” in 1.4)

- ▶ Connect the antenna to the TNC antenna connector located at the top of the phone.
- ▶ If you have placed the phone on a flat surface, position the antenna upright.
- ▶ Connect the curl cord of the handset to the RJ-11 port located on the left side of the phone.
- ▶ Connect the AC/DC Adapter cable to the DC input port located at the top of the phone.
 - If it is correct, a beep tone will be heard.
 - If it is not correct (Booting fails or beep tone is not heard), you will have to reconnect the adapter or reset the battery.
- ▶ Please observe the following to get better voice quality.
 1. Keep away from electrical appliances such as TV, computer, radio etc.
 2. Keep the phone in a high and central location without any obstructions.
 3. Raise the integral antenna of the phone to get maximum strength as shown in the figure.

Introduction

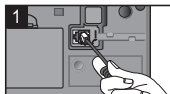


STEP IV. Check the LCD Display

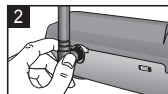
- ▶ After you follow the installation instruction step I to step III, please check the LCD for normal operation.
- ▶ If you do not see the status of service, please repeat the 4th instruction of step III.
- ▶ Then confirm the status of phone to get the proper signal strength from the service operator system.

1.4 Installation Steps

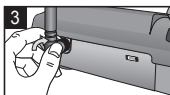
Please follow the procedure below to install the phone properly.



1 Connect basehandset to the handset connector.



2 Connect the antenna to the TNC connector (Turn right).




3 Turn the antenna upright.



4 Connect the AC power supply.





5 Press  button to operate initially.

Basic Operation



2. Basic Operation

2.1 Making a Call

You can make a call as follows:

1. Pick up the handset or press  button.
2. Listen for dial tone and enter the phone number.
3. Wait for the Auto Time-out or Press **Redial/Flash** button.
4. The call is connected and you may start conversation.
5. To disconnect the call, replace the handset or press  button.

2.2 Redialing Last Number

1. Pick up the handset or press  button.
2. Listen for dial tone.
3. Press **Redial/Flash** button.
4. The call is connected and you may start conversation.
5. To disconnect the call, replace the handset or press  button.

2.3 3-way Call Conferencing

Method 1

1. Enter the phone number of the 2nd party phone while you are in telephonic conversation with 1st party.
2. Press **Redial/Flash** button. And press button again.

Method 2

1. Press **Redial/Flash** button while you are in telephonic conversation with 1st party.
2. If you listen to the dialing tone, Press the phone number of the 2nd party phone.
3. Press **Redial/Flash** button.
And press **Redial/Flash** button again.
This service should be provided by your service provider.

2.4 Call Wait

1. Press button, you may start conversation with called number.
2. Re-press button, you may start conversation with previous number.



2.5 Volume Control

1. Press **Up/Down** button of navigation while in a call, to adjust speaker volume.
2. Press **Menu** + 1(**Mute/Unmute**) to prevent sound from you end during the call. To cancel Mute, Press again **Menu** + 1(**Mute/Unmute**).
3. Press **Menu** + 4(**MIC Level**) during a call and select Low or High by pressing **Up/Down** button, to adjust MIC volume.

Basic Operation

2.6 Receiving a Call

When the bell rings in idle state, you can receive a call as follows:

1. Pick up the handset or press the  button.
2. Start a conversation. To disconnect the call, replace the handset or press the  button.

2.7 Memo

Allow you to store number during the call.

To store number :

1. Press **Menu** + 2(**Memo**).
2. Enter up to 32 numbers using the keypad.
3. Press **OK** key to save.

To retrieve an In Call Memo :

1. Press **Redial/Flash** button to see saved number.

2.8 Lock Mode

1. Press **#** button for some time. The phone is now locked. To unlock, press **Menu** and enter lock code (Default "0000").

Also you can lock your phone manually. If you need to modify the lock code, you may modify it using the

New Lock Code within the security menu.

Menu Tree

3.1 PHONE BOOK

Up to 300 entries can be listed here.

To store phone number :

1. Enter the area code and phone number (Max. 32 digits) in on-hook state.
2. Press **OK** key and enter name.
3. Enter the desired memory location.
4. The phone will display a message asking you whether to keep your number as secret or not.
Select **NO** or **Yes** using **Up/Down** button and press **OK** key.

3.1.1 Find

1. Press **Menu** + 1(**PHONEBOOK**) + 1(**Find**) in on-hook state.
2. Select a desired search Menu.
 - ▶ Address, Name, Number : Enter full or part of name (number), select **OK** .
3. Select desired item.
 - ▶ **OK** key : can edit item.
 - ▶ **Redial/Flash** : can delete item.

3.1.2 Add

You can save up to 300 entries in your LSP-450 phonebook.

1. Press **Menu** + 1(**PHONEBOOK**) + 2(**Add**) in on-hook state.

3.1.3 Erase All

1. Press **Menu** + 1(**PHONEBOOK**) + 3(**Erase All**) in on-hook state.

3.2 MESSAGES

The phone can store up to 50 messages in each Inbox and Outbox. If you press **OK** Key, SMS Menu is activated. In the list of Inbox, all sorts of the icon have the meaning as follows :

! : Unread message V : Read message
Inbox, the meaning of (5/37) beside Inbox is that 5 out of 37 messages are unread.

3.2.1 Write

1. Press **OK** + 1(**Write**) in on-hook state.
2. Enter phone number or press **Redial/Flash** to search from phonebook.
3. Write messages.
4. Press **OK** key to send message.

3.2.2 Inbox

1. Press **OK** + 2(**Inbox**) + in onhook state.
2. To delete desired message, select **Redial/Flash** key.
3. To view desired message, select **OK** .
4. Press **Menu** to reply, forward, erase a message or save the sender's number in the phone-book.

Menu Tree

3.2.3 SMS 8282

1. Press **OK** + 3(**SMS 8282**) in on-hook state.
2. You may select from nine items (1. What's New? / 2. News / 3. Cricket / 4. Astrology / 5. Win Prizes / 6. Stocks / 7. Fun / 8. LifeStyle / 9. More).

3.2.4 Outbox

All your successfully sent messages are saved here.

1. Press **OK** + 4(**Outbox**) in on-hook state.

3.2.5 Voice Mail

1. Press **OK** + 5(**Voice Mail**) in on-hook state.
2. Pick up the handset or press **📞** button to make a call back your voice mailbox if the number of the voice mailbox is provided by the telecom service company's system.

3.2.6 Erase Messages

You may erase all messages from three options (1: Inbox & Voice / 2: Outbox / 3: All Messages).

1. Press **OK** + 6(**Erase Messages**) in on-hook state.

3.2.7 MSG Settings

Priority

1. Press **OK** + 7(**MSG Settings**) + 1(**Priority**) in on-hook state.

2. You may select from three options (Normal / Urgent / Emergency).

Delivery ACK

1. Press **OK** + 7(**MSG Settings**) + 2(**Delivery ACK**) in on-hook state.

Defer Delivery

1. Press **OK** + 7(**MSG Settings**) + 3(**Defer Delivery**) in on-hook state.

Valid Period

1. Press **OK** + 7(**MSG Settings**) + 4(**Valid Period**) in on-hook state.

Save Sent MSG

1. Press **OK** + 7(**MSG Settings**) + 5(**Save Sent MSG**) in on-hook state.

Auto Del. Inbox

1. Press **OK** + 7(**MSG Settings**) + 6(**Auto Del. Inbox**) in on-hook state.

3.3 CALL HISTORY

The phone can store up to 30 Missed, 30 Received, 30 Dialed calls, and 30 In Call Memo in Call History.

All sorts of the icons have the meaning as follows :

- | | |
|----------------|-------------------------|
| - Received : ← | - In call Memo : ↙ |
| - Dialed : → | - Call Waiting : → |
| - Missed : ! | - 3-Way Call : C |

Menu Tree

3.3.1 All Call

1. Press **Menu** + 3(**CALL HISTORY**) + 1(**All Call**) or **Redial/Flash** button.
2. To view desired item, press **OK** key.
3. To erase desired number, press **Redial/Flash** key.
4. After you press **OK** key, press **OK** key to see more information and press **OK** key to save the number in the phonebook.

3.3.2 Missed

1. Press **Menu** + 3(**CALL HISTORY**) + 2(**Missed**) in on-hookstate.

3.3.3 Received

1. Press **Menu** + 3(**CALL HISTORY**) + 3(**Received**) in on-hookstate.

3.3.4 Dialed

1. Press **Menu** + 3(**CALL HISTORY**) + 4(**Dialed**) in on-hookstate.

3.3.5 In Call Memo

1. Press **Menu** + 3(**CALL HISTORY**) + 5(**In Call Memo**) in on-hookstate.

3.3.6 Call Duration

Last Dialed

1. Press **Menu** + 3(**CALL HISTORY**) + 6(**Call Duration**) in on-hookstate.

All Dialed

1. Press **Menu** + 3(**CALL HISTORY**) + 6(**Call Duration**) + 2(**All Dialed**) in on-hookstate.

All Calls

1. Press **Menu** + 3(**CALL HISTORY**) + 6(**Call Duration**) + 3(**All Calls**) in on-hookstate.

Reset

1. Press **Menu** + 3(**CALL HISTORY**) + 6(**Call Duration**) + 4(**Reset**) in on-hookstate.

3.3.7 Erase History

You may erase all history from five options (1: Erase All Call / 2: Erase Missed / 3: Erase Received / 4: Erase Dialed / 5: Erase Memo).

1. Press **Menu** + 3(**CALL HISTORY**) + 7(**Erase History**) in on-hookstate

3.4 SOUND

3.4.1 Ring Type

1. Press **Menu** + 4(**SOUND**) + 1(**Ring Type**) in on-hookstate.
2. Select one of the following : (Ring/One-BEEP/Light)

3.4.2 Ring Tone

1. Press **Menu** + 4(**SOUND**) + 2(**Ring Tone**) in on-hookstate.