



ESCORT Wireless Mini Data Logger

Quick Reference Guide
Thank you for purchasing an ESCORT data logging product. Please read this quick reference guide before using this unit.

www.escortdls.com

© ESCORT Data Logging Systems Ltd 2006

1. What You Need

- ESCORT Console Software
- Wireless Mini data logger
- RS232 to DB9 or RS232 to USB cable
- REDi Wireless Receiver

2. Installing The Software

- Start your computer and insert your ESCORT Console software into your CDROM drive, or download ESCORT Console from our website www.escortdls.com.
- If downloading via the Internet, a popup will appear. Click the 'RUN' button.
- The software install wizard will appear. **Select the language required** to view the install wizard and click 'Next'.
- The **licence agreement** will appear. Read the conditions and if accepted click **Next**.
- A screen will appear displaying information regarding ESCORT for Windows and ESCORT User Administration Software. If you are using either of these software packages please read the displayed information and click **Next**. **If you are not using either of the stated packages just click Next.**
- Enter ownership and user details relating to your software and click **Next**.
- Select the languages you require your software to be published in and click **Next**.
- If you are running ESCORT User Administration Software please follow the instructions displayed. If you are not running ESCORT User Administration software click 'Next'.
- ESCORT Console software is now successfully installed on your computer.

3. Connecting A logger to your PC

The Wireless Mini only requires a standard RS232 to DB9 or RS232 to USB cable to communicate with your PC:

1) RS232 to DB9 cable.



2) USB to RS232 cable (JA-USB-SER).



Both of these cables are available for purchase from your local electronics store. Alternatively you are able to purchase the USB to RS232 cable from your ESCORT DLS distributor.

Connecting the DB9 (9 pin) cable to your computer

Plug the DB9 connector into the serial port located at the rear of your PC.

Tighten the screws located either side of the connector, but **Do not over tighten**.



Connecting the USB / RS232 cable to your computer

There are three places on your PC where you may find a USB port. These are;
The rear of your PC,
on the front panel below the on button and on the side of some LCD screens.

In some instances you may locate a USB connector on your keyboard, or may have a USB junction box.

Once you have attached the USB cable to your PC **you must install the required drivers**. The drivers can be found on a disc supplied with the cable or downloadable via our website.



Rear



Front

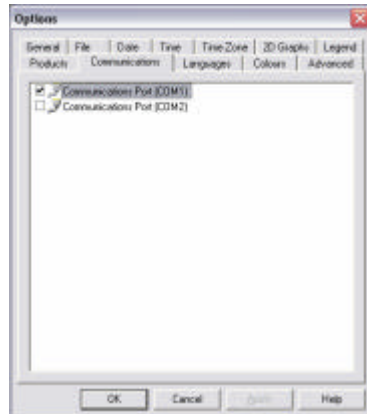


Screen

4. Console Serial Port Setup

Once you have successfully installed your Console software, it can automatically check how many COM ports are located on your computer (including USB).

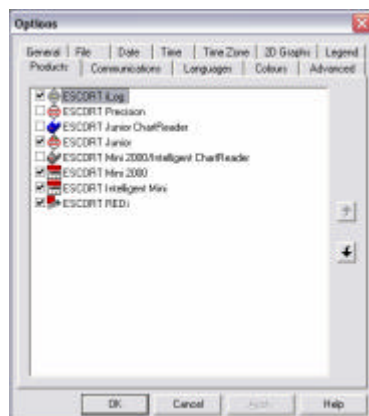
- Select the menu options **EDIT > OPTIONS > COMMUNICATIONS** and choose the relevant COM Port and click 'OK'.



5. Console Product Setup

You are required to select the ESCORT products that you want to communicate with.

- Select the menu options **EDIT > OPTIONS > PRODUCTS** and select the relevant Products listed and click 'OK'.



6. Programming A Wireless Mini

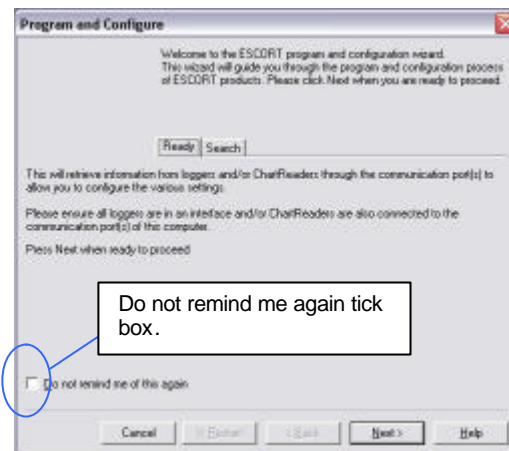
Start your computer and open your ESCORT Console software by selecting the ESCORT Console icon located on your desktop, or via the following menu options **START > ALL PROGRAMS > ESCORT > CONSOLE**.

- Select the Program & Configure icon from the Console taskbar, or select **Action > Program & Configure** from the dropdown menu or **Control + P**.

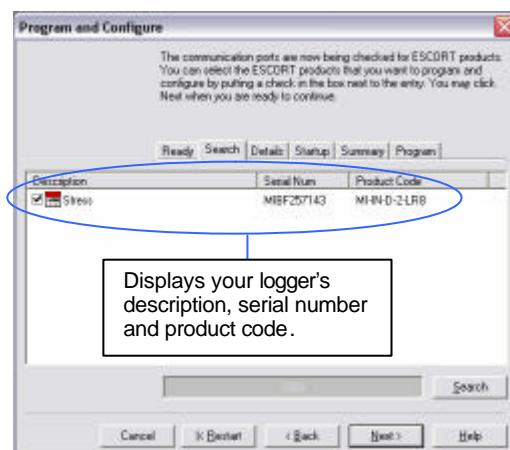


- The Program & Configure wizard will open and an information screen will appear. Click 'Next'.

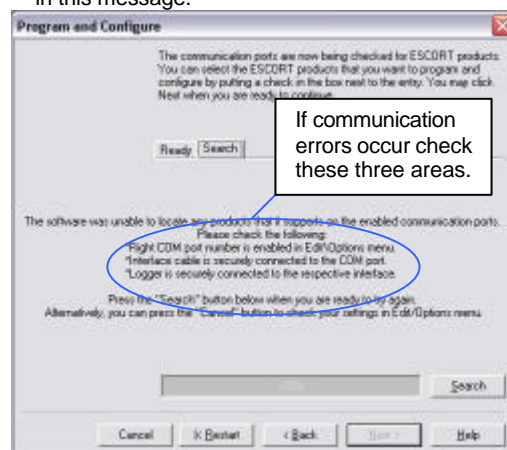
- The first window to appear on the program and configure wizard is a general information window. Please read this window and if you do not wish to see this window again when programming select the 'Do not remind me again' tick box.



- The second window to appear is search screen. Once your software has located a logger the window will display the loggers' description, serial number and product code. To proceed select the 'Next' button.

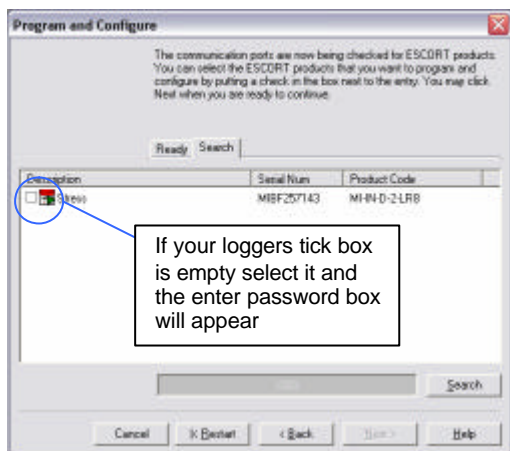


- If your software is unable to locate a logger due to communication problems the following message will be displayed. Check all three bullet points displayed in this message.

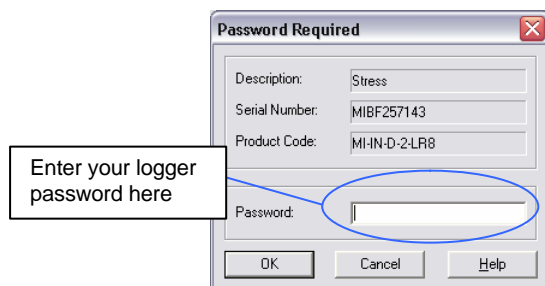


Password protection

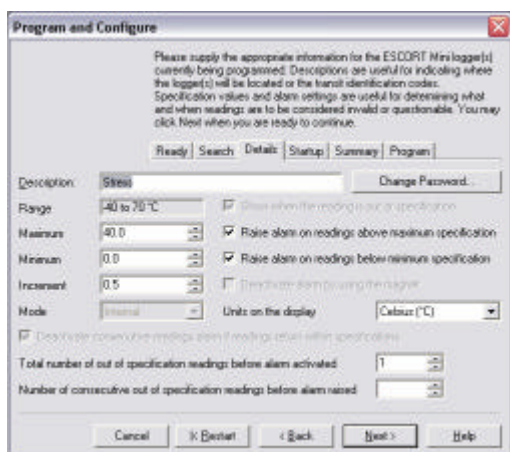
If your logger has been issued a password to, your logger tick box will appear unchecked. If you select your loggers tick box the enter password box will appear.



Enter the password in the field provided and select the 'OK' button.

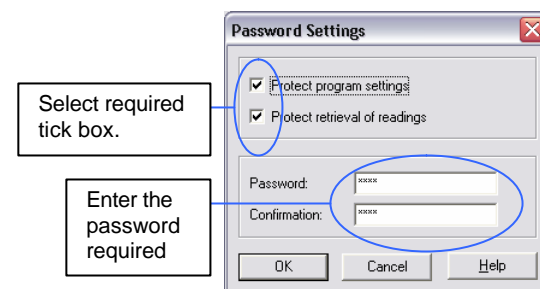


- The next window to appear is the 'Details' window. Here you can add a description to your Wireless Mini, alter your password settings, view your loggers temperature range, add high and low alarm settings, change temperature scale (°C or °F) and set the number of readings before an alarm is raised. After entering the relevant details click 'Next'.

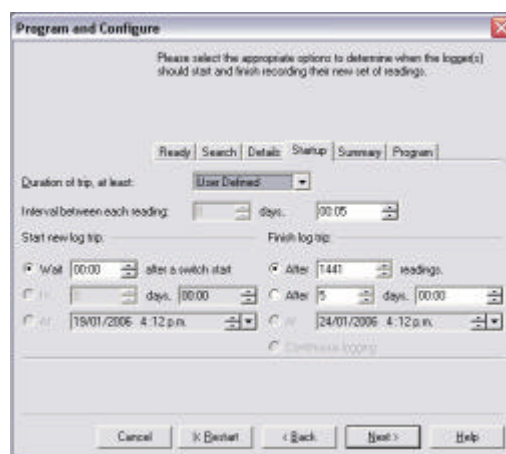


Adding a password

It is possible to add a password to protect your logger upon programming and download. To enter a password first select the tick box for program and/or download and enter the designated password in the spaces provided.

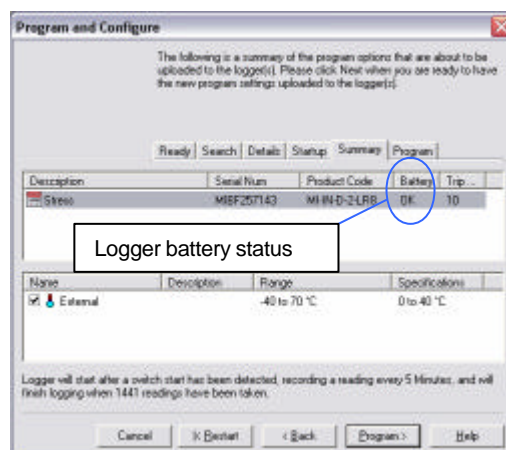


- The next window to appear is the 'Startup' window. Here you are able to enter your logger's trip duration, logging interval and start finish conditions. Please make the required selections and select click the 'Next' button.



- The next window to appear is the 'Summary' window. Here you are given a brief summary of the condition in which you have programmed your logger with.

Note: In this screen your logger's battery status is displayed if your logger has an insufficient battery life for its trip duration your software will not allow the logger to be programmed.

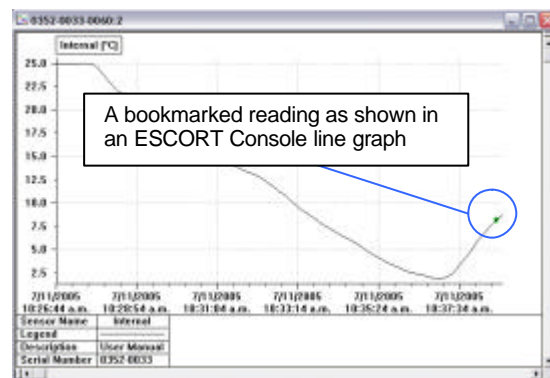


7. Book-marking Readings

- A bookmark is an identification method used to locate a reading or time regarding an action that has taken place (e.g. the opening of a freezer door). You have the ability to 'bookmark' logger readings (maximum of 24 bookmarks) by pressing your Wireless Mini's start button after the logging cycle has commenced. Once your Wireless Mini has been downloaded, your ESCORT Console software will highlight bookmarked readings using the colour **green**.

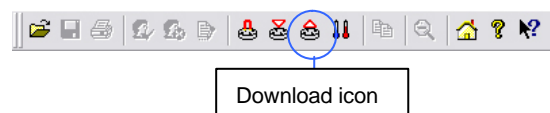
A bookmarked reading as shown in an ESCORT Console readings report

Index	Elapsed Time	Date	Time	Interval	Temperature (°C)
63	620	7/11/2005	10:37:04 a.m.	1.8	1.8
64	630	7/11/2005	10:37:14 a.m.	2.1	2.1
65	640	7/11/2005	10:37:24 a.m.	2.5	2.5
70	650	7/11/2005	10:38:14 a.m.	6.2	6.2
71	700	7/11/2005	10:38:24 a.m.	7.5	7.5
72	710	7/11/2005	10:38:34 a.m.	8.2	8.2
73	720	7/11/2005	10:38:44 a.m.	10.8	10.8



8. Downloading A Wireless Mini

- Start your computer and open your ESCORT Console software by selecting the ESCORT Console icon located on your desktop, or via the following menu options **START > ALL PROGRAMS > ESCORT > CONSOLE**.
- Select the Download icon from the Console taskbar, or select **Action > Download** from the dropdown menu or **Control + D**.



- The Download wizard will open and an information screen will appear. Click **'Next'**.
- The next screen to appear is the search screen. If your logger is password protected the tick box will be empty. Select the tick box and the password window will appear. If the tick box is already checked click **'Next'** (see next page).

Logger tick box

- If your logger is password protected, enter the correct password and click **'OK'**.

Enter your logger password here

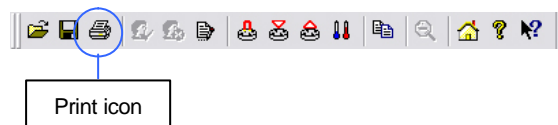
- The next screen to appear is the Download screen. Check that your logger details displayed within this screen are correct and click **'Next'**.

- The next screen to appear is the Finish screen. Here you can enter new start commands. After entering the relevant start conditions click **'Finish'**.

Enter new start condition and click Finish

9. Printing A File

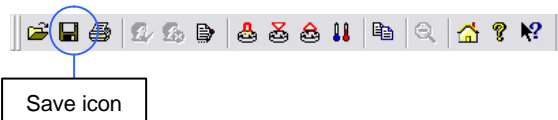
- Select the Print icon from the Console taskbar, or select **File > Print** from the dropdown menu or **Control + P**.



- If you have several printers to choose from or want to change your printing preferences (e.g. change your printing layout from portrait to landscape), select **File > Print Setup** or **Control + R**.
- To preview the layout of the file you are about select **File > Print Preview** or **Control + V**.

10. Saving A File

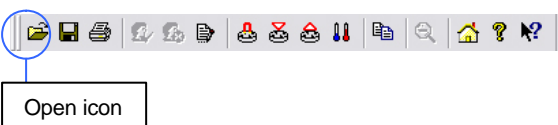
- Select the Save icon from the Console taskbar, or select **File > Save** from the dropdown menu or **Control + S**.



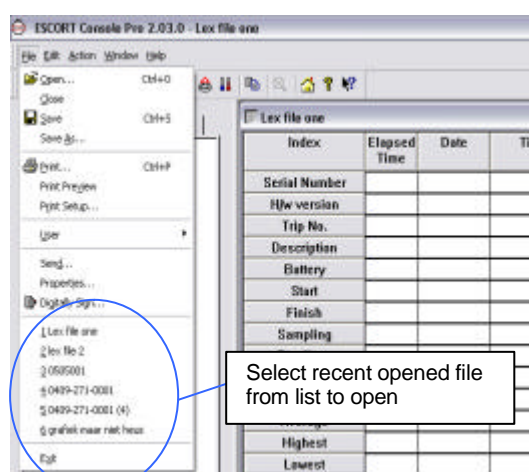
- If required to save additional copies of a file select **File > Save As** from the dropdown menu or **Control + A**.

11. Opening A Saved File

- Select the Open File icon from the Console taskbar, or select **File > Open** from the dropdown menu or **Control + O**.



- The six most recently opened files are saved in a list located at the bottom of the file menu. You can open these files by selecting the correct filename from this list.



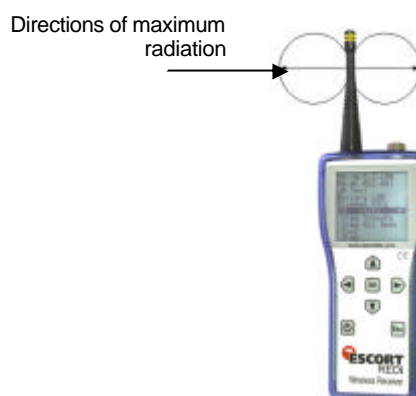
12. Wireless Communication

The ESCORT REDi is a handheld wireless receiving device that can communicate with up to 30 Wireless Mini loggers in a single download session.

The REDi has the ability to store up to 162 logger files within its 1 megabyte memory and can communicate distance of up to 50m (depending on environmental conditions).

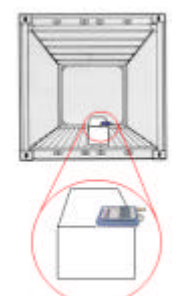


Maximum Communication Signal



Wireless Communication In Containers

Due to a cargo containers makeup (a sealed metal box), the ability to transmit an RF signal to an external source is greatly reduced. Optimum wireless communication will only take place if your Wireless Mini loggers are placed away from all six sides of the container and the antennae's direction of radiation crosses path with that of the receiving device (REDi).



Our tests show that optimum communication from a REDi device takes place 0.5m from the container door and in line with the container doors rubber seal.



Radio, EMC and Safety Regulations



This device complies with part 15 of the Federal Communications Commission (FCC) rules. Operation is subject to the following conditions:

1. This device may not cause harmful interference,
2. This device must accept any interference received, including interference that may cause undesired operation.

Note: This equipment has been tested and found to comply with the limits for a Class B Digital Device, pursuant to Part 15 of the FCC Rules. These limits are designed to provide reasonable protection against harmful interference in a residential installation. This equipment generates, uses and can radiate radio frequency energy and, if not installed and used in accordance with the instructions, may cause harmful interference to radio communications.

However, there is no guarantee that interference will not occur in a particular installation. If this equipment does cause harmful interference to radio or television reception, which can be determined by turning the equipment off and on, the user is encouraged to try to correct the interference by one or more of the following measures:

- Reorient or relocate the receiving antenna.
- Increase the separation between the equipment and receiver.
- Connect the equipment into an outlet on a circuit different from that to which the receiver is connected.
- Consult the dealer or an experienced radio/TV technician for help.

Note: The Manufacturer is not responsible for any radio or TV interference caused by unauthorised modifications to this equipment. Such modifications could void the user's authority to operate the equipment.

FURTHER INFORMATION

For further information please contact your local distributor or visit our website www.escortdls.com