



User Manual

Model: R8

Table of Contents

Brief introduction	3
Safety Instructions	3
Getting the Tablet PC Running.....	4
Unpacking	4
Exploring the Tablet PC.....	5
Front view	5
Back view	6
Side view	7
Indicators	8
Operating Your Tablet PC	9
Starting and Stopping the Tablet PC.....	9
Starting the Tablet PC	9
Stopping the Tablet PC.....	9
Connecting Audio Devices	10
Connecting a USB Device.....	10
Using the Wireless LAN	11
Using the 3G Feature (Optional).....	11
Using the GPS (Optional)	12
Using the Bluetooth® Wireless Feature.....	12
Connecting to a Bluetooth device.....	12
Sending a file to a Bluetooth device	16
Touch Panel Input	18
Using the On-screen Keyboard	18
Using the Writing Board.....	18
Using TPM (Trusted Platform Module)	19
Power Management	19
Hibernation.....	20
The BIOS Setup	21
2.1 Configuration Software.....	21
2.2 Running the Setup Utility.....	22
2.3 Main Setup.....	23
2.4 Boot Setup	24
2.5 Security Setup	25
2.6 Save & Exit Setup	26
System Utilities	27
3.1 The BIOS Flash Utility.....	27
3.2 The EC Flash Utility	27
General hardware problems / possible causes and solutions	28
Appendix A.....	29
Specifications.....	29
Appendix B.....	31
Regulatory Information.....	31
On the Use of the System	31
Class B Regulations	31
Safety Notices	32
About the Battery	32
About the AC Adapter.....	33

Brief introduction

Safety Instructions

Use the following safety guidelines to help protect yourself and Tablet PC.

Do not attempt to service the Tablet PC yourself. Always follow installation instructions closely.

Be sure that nothing rests on the AC adapter's power cable and that the cable is not located where it can be tripped over or stepped on.

Do not cover the AC adaptor with papers or other items that will reduce cooling; also, do not use the AC adapter while it is inside a carrying case.

Use only the AC adapter, power cord, and batteries that are approved for use with this Tablet PC. Use of another type of battery or AC adapter may cause risk of fire or explosion.

If you use an extension cable with the AC adapter, ensure that the total ampere rating of the products plugged in to the extension cable does not exceed the ampere rating of the extension cable.

When you move the Tablet PC between environments with very different temperature and/or humidity ranges, condensation may form on or within the Tablet PC. To avoid damaging the Tablet PC; allow sufficient time for the moisture to evaporate before using the Tablet PC.

When you disconnect a cable, pull on its connector or on its strain relief loop, not on the cable itself. As you pull out the connector, keep it evenly aligned to avoid bending any connector pins. Also, before you connect a cable make sure both connectors are correctly oriented and aligned.

FCC Statement

FCC ID: NV8- R8

This device complies with Part 15 of the FCC Rules. Operation is subject to the following two conditions: (1) this device may not cause harmful interference, and (2) this device must accept any interference received, including interference that may cause undesired operation. changes or modifications not expressly approved by the party responsible for compliance could void the user's authority to operate the equipment.

NOTE: This equipment has been tested and found to comply with the limits for a Class B digital device, pursuant to Part 15 of the FCC Rules. These limits are designed to provide reasonable protection against harmful interference in a residential installation. This equipment generates, uses and can radiate radio frequency energy and, if not installed and used in accordance with the instructions, may cause harmful interference to radio communications. However, there is no guarantee that interference will not occur in a particular installation. If this equipment does cause harmful interference to radio or television reception, which can be determined by turning the equipment off and on, the user is encouraged to try to correct the interference by one or more of the following measures:

- Reorient or relocate the receiving antenna.
- Increase the separation between the equipment and receiver.
- Connect the equipment into an outlet on a circuit different from that to which the receiver is connected.
- Consult the dealer or an experienced radio/TV technician for help.

FCC SAR information

FCC Radiation Exposure Statement This equipment complies with FCC RF radiation exposure limits set forth in an uncontrolled environment. This transmitter must not be co-located or operating in conjunction with any other antenna or transmitter. The device was tested and complies to measurement standards and procedures specified in FCC OE Bulletin 65, Supplement C.

This device is acting as slave and operating in the 2.4 GHz (2412 – 2462 MHz) band. Ad Hoc function is supported but not able to operate on non-US frequencies.

RF Exposure Information:

FCC RF Exposure requirements: The highest SAR value reported under this standard during product certification for use next to the body with the minimum separation distance of 0cm is 1.22 W/kg

This transmitter must not be collocated or operating in conjunction with any other antenna or transmitter.

Getting the Tablet PC Running

This section guides you through the procedures for getting the Tablet PC ready for operation.

Unpacking

After unpacking the shipping carton, you should find these standard items:

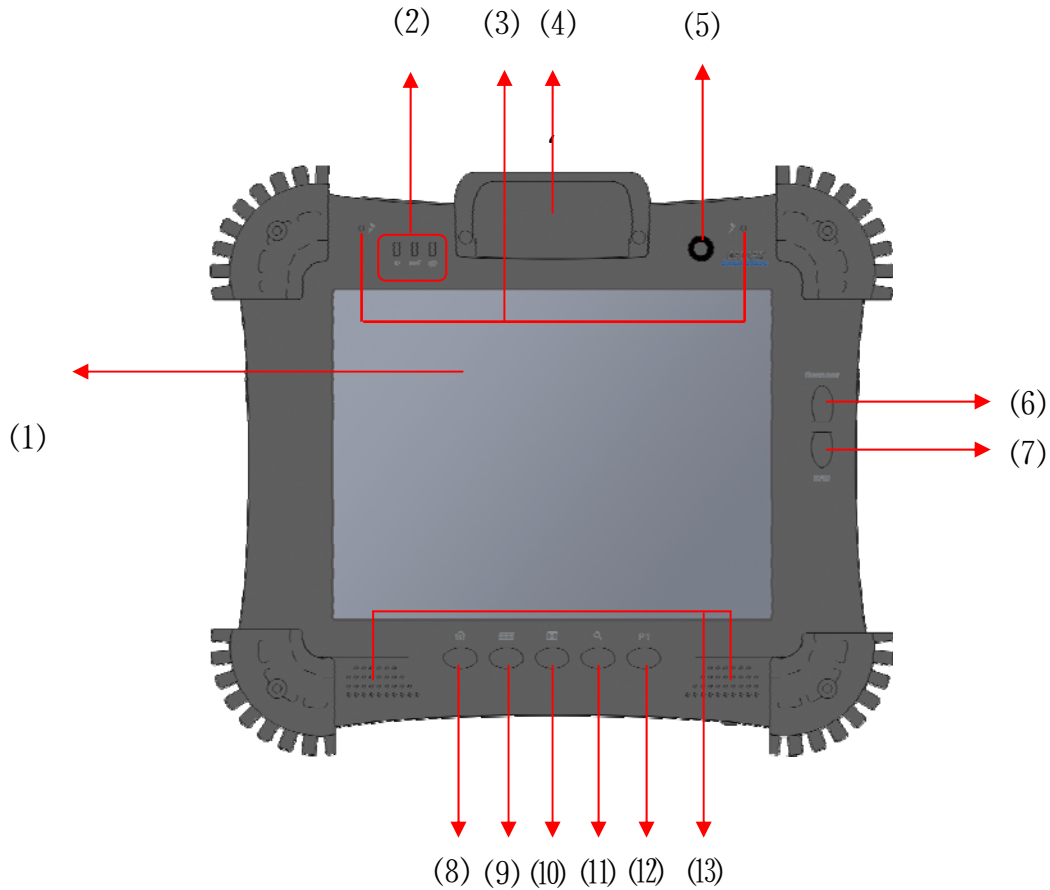
- Tablet PC
- Accessories:
 - AC adapter
 - AC power cord
 - Hand strapx2
 - Screen protector film (already attached to the screen)
 - Touch screen pen

Inspect all the items. If any item is damaged or missing, notify your dealer immediately.

Keep the shipping carton and packing materials in case you need to ship or store the Tablet PC in the future.

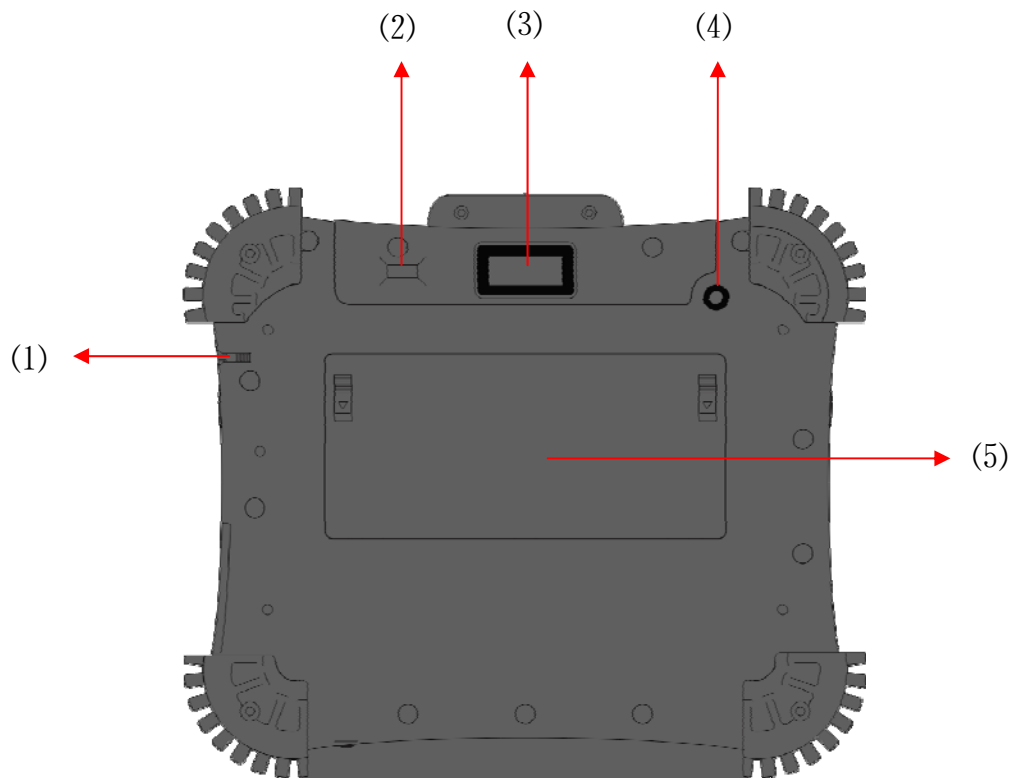
Exploring the Table PC

Front view



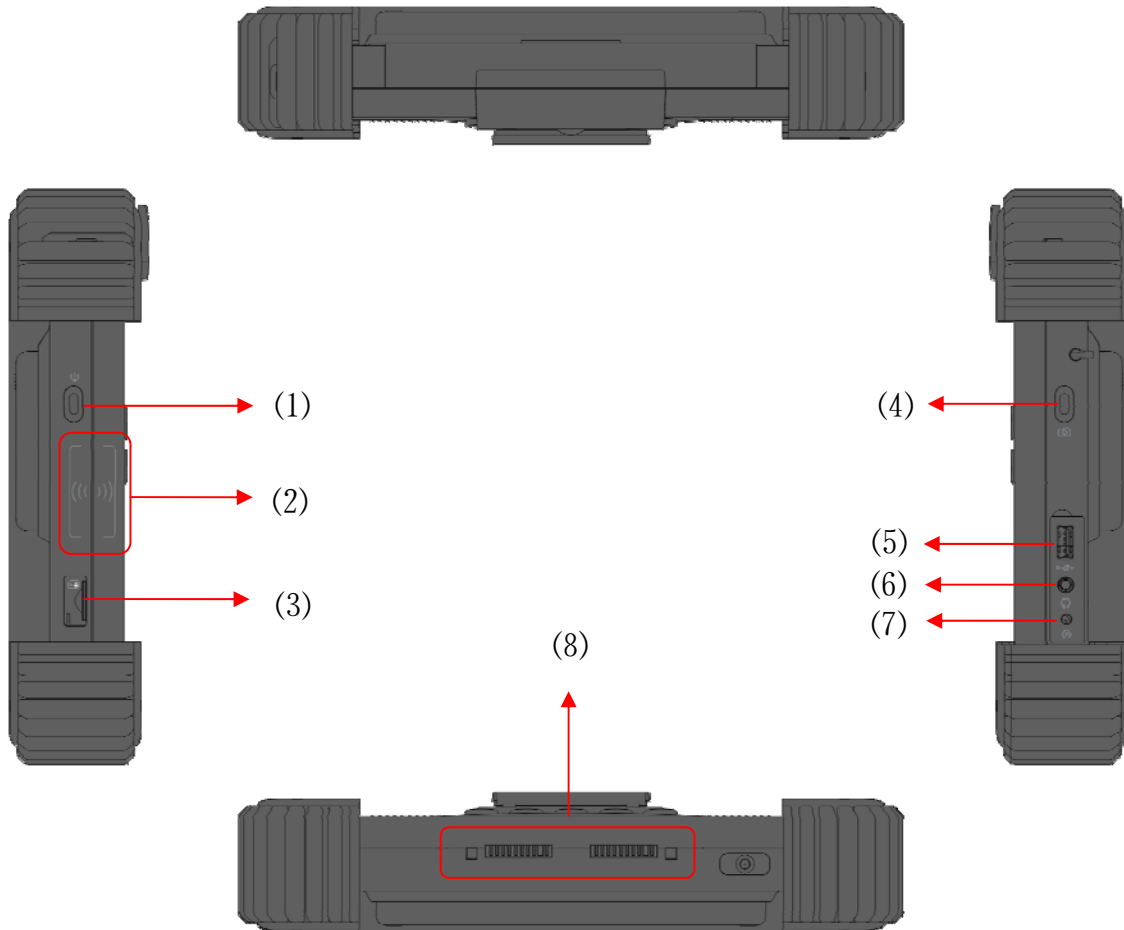
(1) Touch Screen	Displays and receives information for the Tablet PC..
(2) Indicators	Show the current status of the Tablet PC's devices.
(3) MIC	Receives sounds and voices for recording.
(4) MSR (Optional)	Triple track readers(ISO TK1,2&3)
(5) Front Camera	A built-in webcam that allows you to capture still images, record videos, and chat online.
(6) Scanner Button	Press and hold to enable 1D/2D Scan function, when release to disable.
(7) RFID Button	Press and hold to enable RFID Scan function, when release to disable.
(8) Home Desk	Press for the "Home key".
(9) On Screen -keyboard	Press for call "on-screen keyboard".
(10) Lock	Press to lock the G-sensor function.
(11) Searching	Press to enable the system Searching function.
(12) P1	Application keys.
(13) Speaker	Produces sounds from multimedia files or the operating system.

Back view



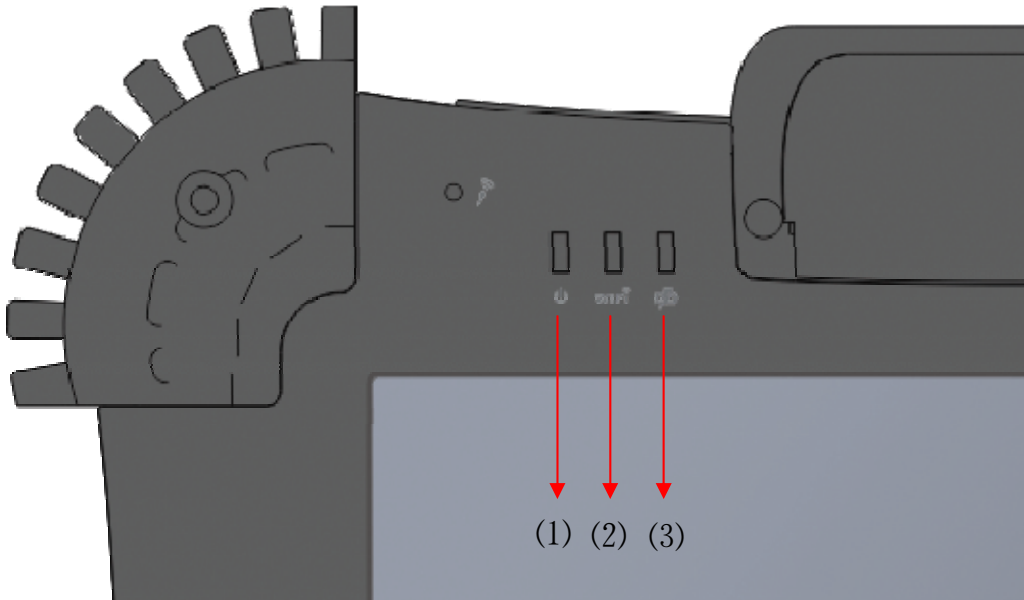
(1) Stylus	Serves as the input device by tapping on the touch screen to make selections and enter information.
(2) Finger printer	Finger printer Reader.
(3) 1D/2D Barcode Scanner	1D & 2D Barcode Reader.
(4) Back Camera	You can take photos at resolutions up to 2048 x 1536 pixels (3.2 megapixels) and recording videos.
(5) Battery	Supplies power to the Tablet PC when external power is not connected.

Side view



(1) Power button	Turns the Tablet PC power ON and OFF.
(2) RFID Scan area	This area for Scan RFID.
(3) 3G SIM Card Slot	Contains the 3G SIM card slot (optional).
(4) Camera button	Turn on the Camera.
(5) USB port	Each of the two ports connects a USB device, such as a USB flash disk, printer, digital camera, joystick, and more.
(6) Audio jack	Connects a set of headphones, external speakers with amplifier, or an audio recording device.
(7) Power jack	Connects the AC adapter.
(8) Docking Connector	Connects to a docking station.

Indicators



(1) Power indicator	When the system is on, it lights up in blue. When the system is in Sleep mode, it flashes in blue. When the system is off, the light goes off.
(2) Wireless LAN indicator	When WLAN is turned on, it lights up in blue. When WLAN is turned off, the light goes off.
(3) Battery indicator	When the battery is charging, it lights up in red. When the battery is low, it flashes in red. When the battery is fully charged, it lights up in blue.

Operating Your Tablet PC

This chapter provides information about the use of the Tablet PC.

If you are new to Tablet PCs, reading this chapter will help you learn the operating basics. If you are already a computer user, you may choose to read only the parts containing information unique to your Tablet PC.

Starting and Stopping the Tablet PC

There are a number of ways to start and stop the Tablet PC.

Starting the Tablet PC

You always start the Tablet PC using the power button.

A Tablet PC starts up with an operating system (OS) existing on the storage device such as the hard disk. The Tablet PC will automatically load the OS after you turn it on. This process is called booting.

Stopping the Tablet PC

When you finish a working session, you can stop the Tablet PC by turning off the power or leaving the Tablet PC in Standby or Hibernation mode:

To stop in this mode...	Do this...	To start up or resume again
Off	Follow the shutdown procedure of your operating system. This can prevent loss of unsaved data or damage to your software programs. If the system is locked up because of hardware or software problems, press the power button to turn off the Tablet PC.	Press the power button.
Standby	Depending on your settings in Windows, you can place the Tablet PC in Standby mode by pressing the power button.	Press the power button.

Hibernation	Depending on your settings in Windows, you can place the Tablet PC in Hibernation mode by pressing the power button.	Press the power button.
-------------	--	-------------------------

If you choose to stop in Standby or Hibernation mode, you can return to where you left off the next time you start up the Tablet PC.

Connecting Audio Devices

For higher audio quality, you can send sound through external audio devices such as speakers, headphones, or earphone set using the audio-out connector.



Connecting a USB Device

Your Tablet PC has One USB ports for connecting USB devices, such as a digital camera, scanner, printer, modem, and mouse.

The USB ports support transfer rates up to 12 MB/s for USB 1.1 devices and 480 MB/s for USB 2.0 devices.

To connect a USB device, simply plug the device cable to one of the USB ports.



Using the Wireless LAN

The WLAN features include:

Peer-to-Peer (Ad-Hoc) and Access Point (Infrastructure) modes support

WEP (Wired Equivalent Privacy) 64/128-bit data encryption

IEEE 802.11b/g/n standard compliance

Technology	802.11b	802.11g	802.11n
Stated Maximum Throughput (Mbps)	11	54	300
Data Rates (Mbps)	11, 5.5, 2, 1	54, 36, 18, 9	300,270,150,54,11
Band (GHz)	2.412 ~ 2.462	2.4	2.412GHZ ~2.484GHZ
Modulation Technology	DSSS (Direct Sequence Spread Spectrum)	OFDM (Orthogonal Frequency Division Multiplexing)	DBPSK, DQPSK, CCK, OFDM, 16-QAM, 64-QAM

Using the 3G Feature (Optional)

3G is the third generation of mobile phone standards and technology, after 2G. It is based on the International Telecommunication Union (ITU) family of standards under the International Mobile

Telecommunications programme, “IMT-2000”. Services include wide-area wireless voice telephony and broadband wireless data, all in a mobile environment.

Unlike IEEE 802.11 networks, 3G networks are wide area cellular telephone networks which evolved to incorporate high-speed internet access and video telephony. IEEE 802.11 networks are short range, high-bandwidth networks primarily developed for data.

To use the 3G feature on your computer, you need to subscribe to 3G service and install the 3G SIM card from your service provider, network operator, or other vendor.

To install the SIM follow these steps:

1. Make sure that the Tablet PC is not turned on or connected to AC power.
2. Place the Tablet PC power button side down.
3. Open the protective cover, and then Insert a 3G SIM card into its slot.

Using the GPS (Optional)

Depending on the model you purchased, your Tablet PC may have the GPS receiver module built in.

GPS (Global Positioning System) is a constellation of 24 well-spaced satellites that orbit the Earth and make it possible for devices enabled with GPS receivers to pinpoint their location.




You need to install third-party GPS navigation software to take advantage of the GPS feature.

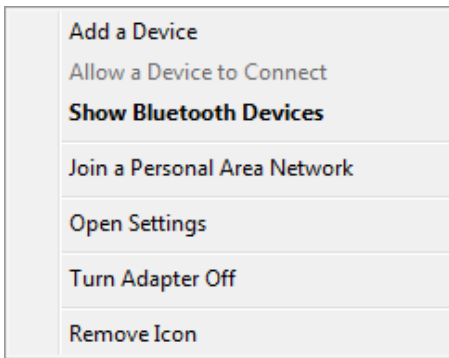
Refer to chapter 6 on using the GPS feature.

Using the Bluetooth® Wireless Feature

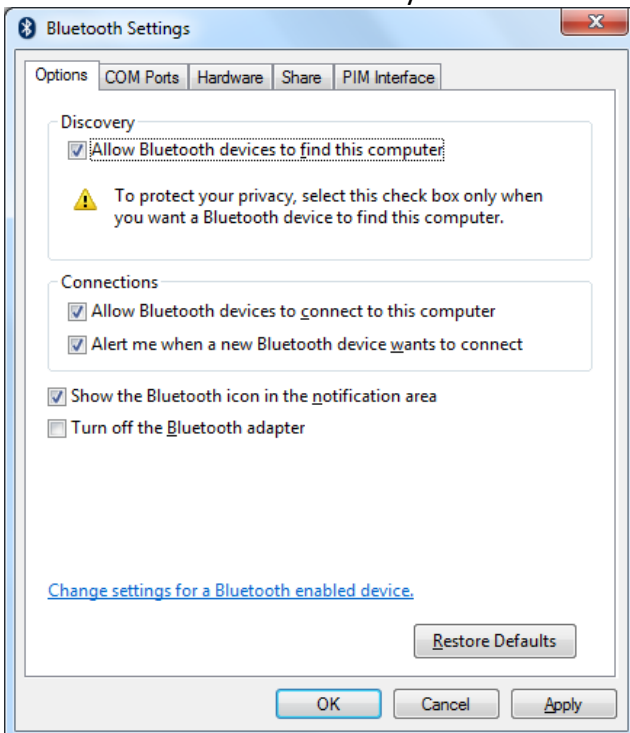
The Bluetooth function allows you to get connected to various devices and services that support Bluetooth transmission. You can connect wirelessly without the need for data cables when printing documents, synchronizing your Personal Information Management (PIM) data with your Personal Digital Assistant (PDA) or another Personal Computer (PC), mobile phone or even sharing a network connection.

Connecting to a Bluetooth device


1. Right-click  in the notification area (located at the lower right corner of the desktop or clicking  to access  from the hidden icons) and select Open Settings.

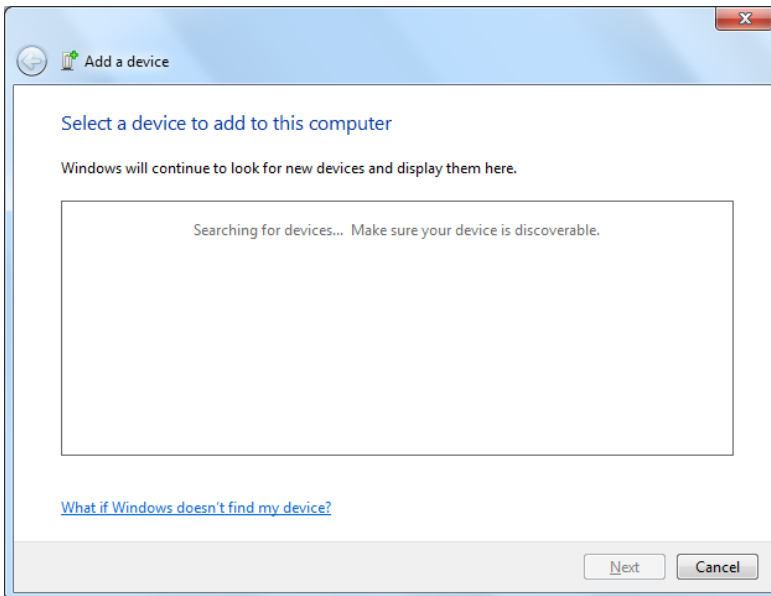


2. In the Options tab, select Allow Bluetooth devices to find this computer, and click OK. So, other Bluetooth devices can find your Tablet PC and make the Bluetooth connection.



You also need to activate the Bluetooth connection feature of the device that you want to connect to.

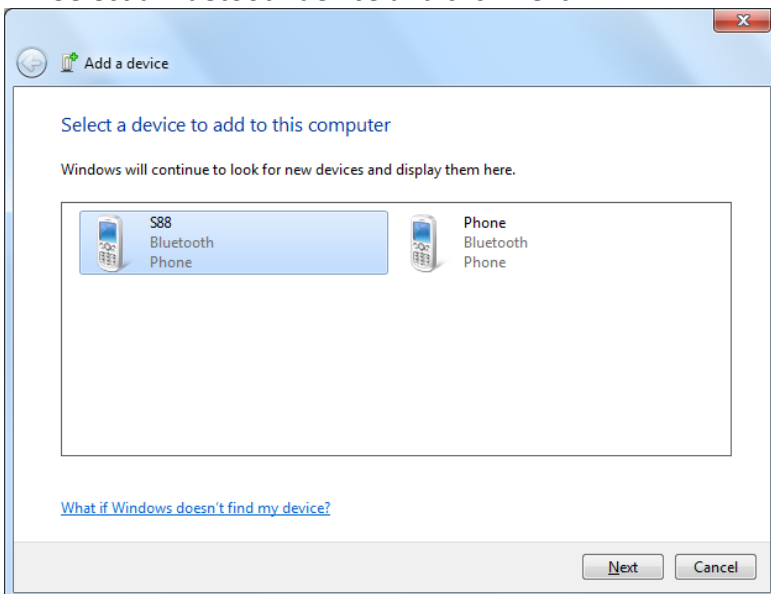
3. Right-click  and select Add a Device. Wait for a while and the found active Bluetooth devices will show.



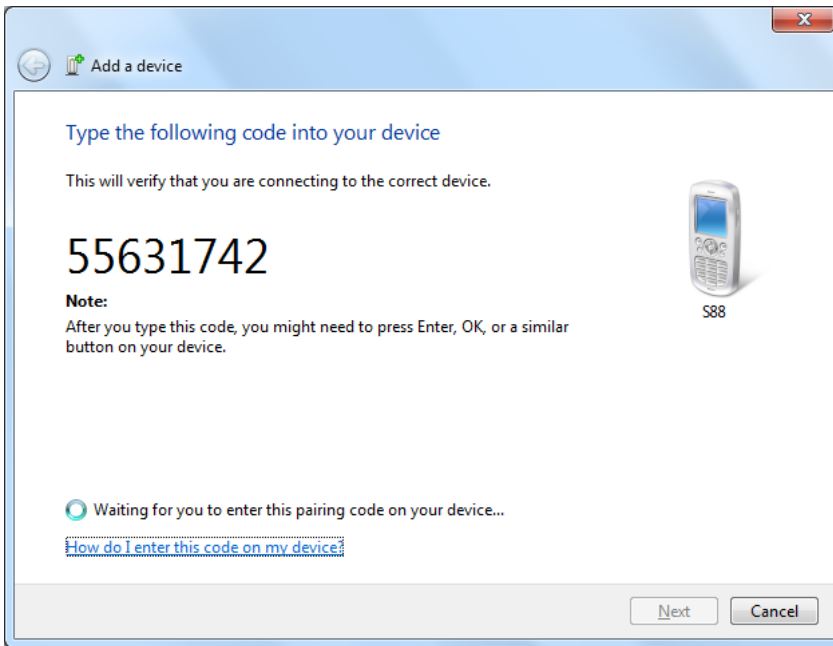
For details about how to activate the device's Bluetooth function, please refer to its documentation.

- The maximum effective range of connection between your Tablet PC and the Bluetooth device is about 10 meters.

4. Select a Bluetooth device and click Next.

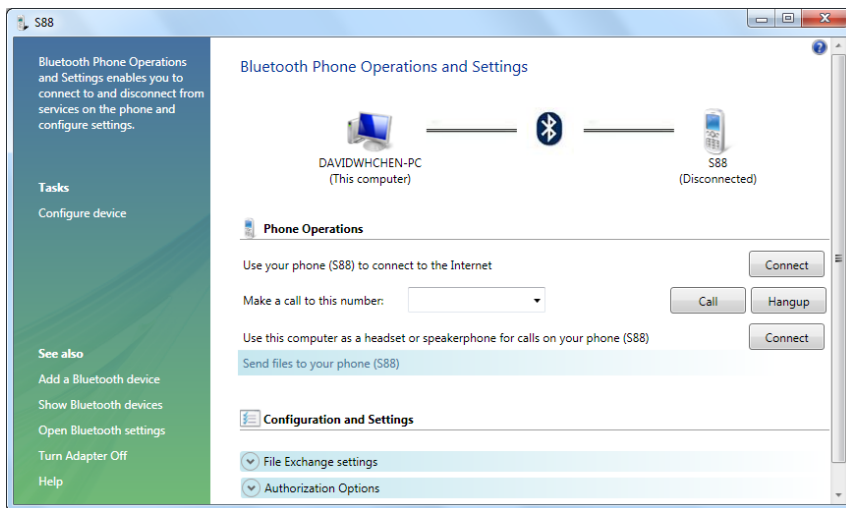


5. Windows generates a random code number shown on the screen. Type in this code number into the Bluetooth device your Tablet PC is trying to connecting to.




6. Once the Bluetooth device is connected to your Tablet PC, the following dialog box shows. Click Close. Meanwhile, another dialog box (also shown below) opens and provides more options (available options may vary depending on the type of the Bluetooth device).

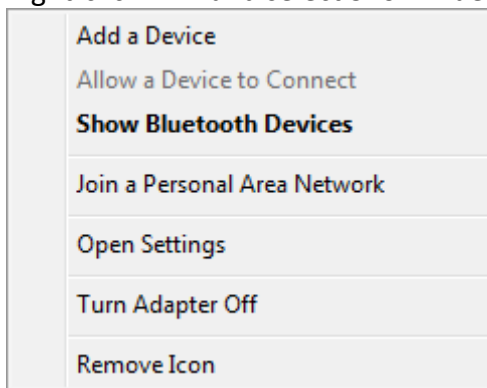




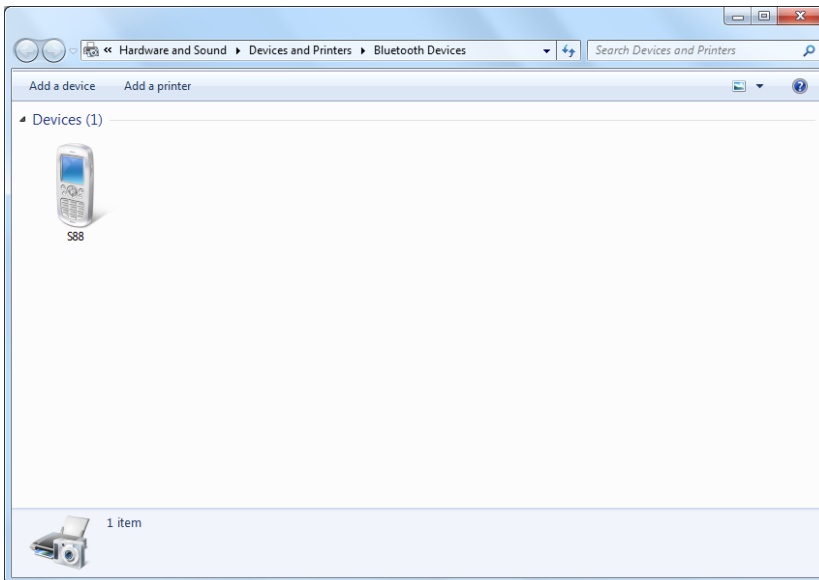
- The code number is used for pairing and identifying Bluetooth devices.
- The code entered on your device and another device with Bluetooth connectivity must be identical.
- If you have not entered the required code number after a while, the connection will be cancelled for security concern. Click **Back** and enter the code number again.

Sending a file to a Bluetooth device

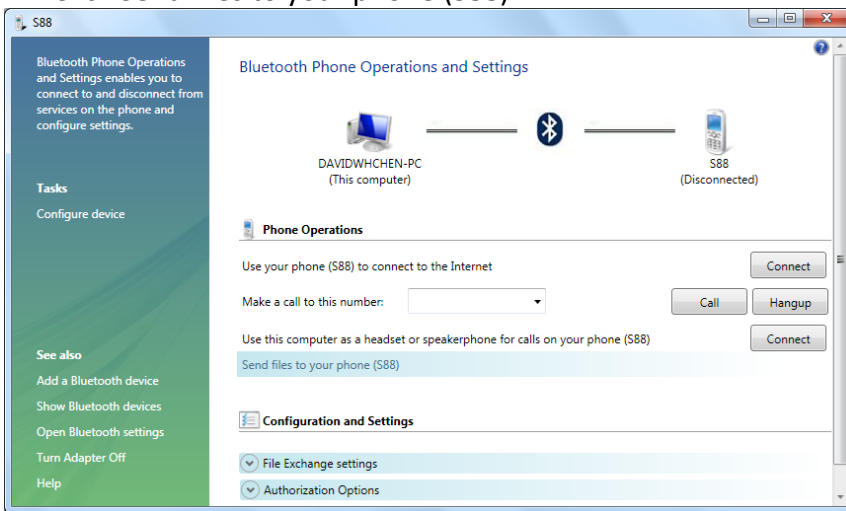
1. If your Bluetooth device is capable of sending and receiving data, such as a mobile handset, you can use the Bluetooth connectivity to transfer data wirelessly between your Bluetooth and Tablet PC.
2. Right-click  and select Show Bluetooth Devices.



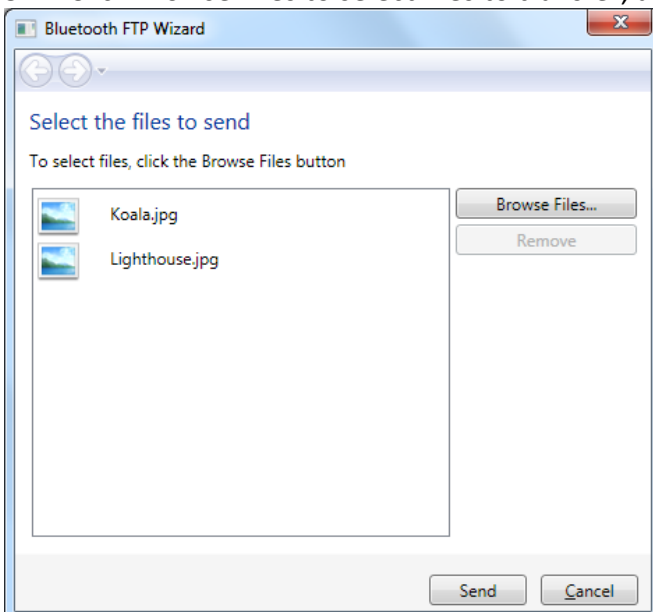
3. In this example, double-click the S88 icon (the S88 handset can transfer data via Bluetooth).



4. Click Send files to your phone (S88).

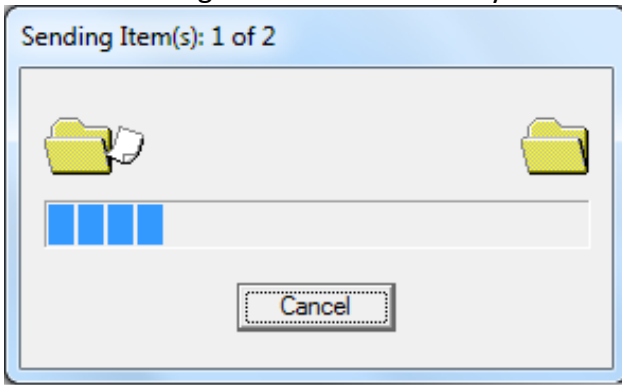


5. Click Browse Files to select files to transfer, and then click Send.



6. The selected files are now sending to the S88 handset. Once the transfer is done, the **Sending**

Items dialog box will automatically close.



The example shown above is specifically for connecting to a mobile handset. When connecting to other types of a Bluetooth device, the steps may vary.

Touch Panel Input

Using the On-screen Keyboard

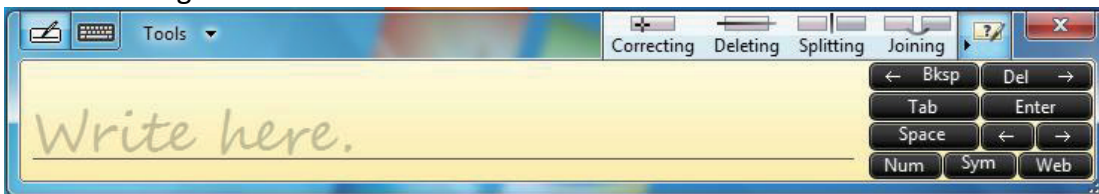
The on-screen keyboard is the main input panel used to enter textual content.



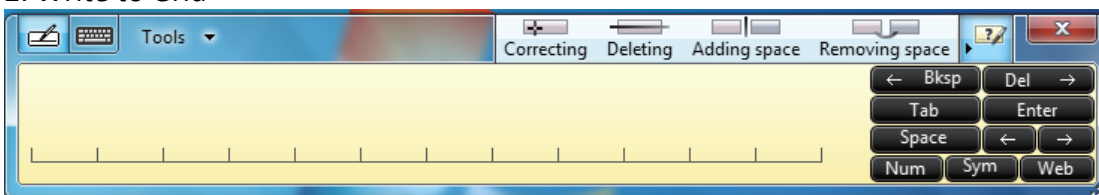
Using the Writing Board

There is also a Writing Board that captures handwriting and converts it to printed text. There are two methods for capturing hand writing: Free writing or Write to Grid.

1. Free writing



2. Write to Grid



Using TPM (Trusted Platform Module)

Your Tablet PC comes with an added security feature known as the TPM (Trusted Platform Module) – a component on your Tablet PC’s motherboard that is specifically designed to enhance platform security above-and- beyond the capabilities of today’s software by providing a protected space for key operations and other security critical tasks.

TPM is a hardware-based security feature that can be used to create and manage computer-generated digital certificates. When combined with security software, the TPM enhances existing network and computer security by enabling features such as file protection capabilities and protected e-mail.

You can use the certificates to:

- **Send and receive secure email from email clients like Microsoft Windows Mail/Outlook Express, Microsoft Outlook or Netscape Messenger**
- **Set up browser (e.g. Netscape Navigator or Internet Explorer) and web server (e.g. Microsoft Internet Information Server) for Client Authentication**
- **Sign Microsoft Word macros**
- **Encrypt files and folders**
- **Secure network connections**

Power Management

Your Tablet PC supports ACPI (Advanced Configuration and Power Interface) for power management. The power management feature allows you to reduce the power consumption for energy saving.

With an ACPI-compliant operating system such as Windows, power supply to different Tablet PC components is controlled on an as-needed basis. This allows maximum power conservation and performance at the same time.

In general, Windows’ power management works in this way:

What...	When...
Power to the hard disk is turned off	When the hard disk has been idle for a set period.
Power to the display is turned off	When the display has been idle for a set period.
The Tablet PC enters the Standby mode. The hard disk and display are	When the entire system has been idle for a set period.

turned off and the entire system consumes less power.	When you press the power button.*
The Tablet PC enters the Hibernation mode. (See the next subsection for more information.)	When the entire system has been idle for a set period.
	When you press the power button. *

* Depends on your settings in Windows.

For detailed information on power management, see Windows' Help.

Hibernation

NOTE: Make sure that the hibernation feature is enabled in the **Hibernate** tab of the **Power Options** properties from the Control Panel in Windows 7.

Hibernation is a very useful feature. People frequently open many applications when they use computers. It takes some time to get all these applications open and running, and normally they all have to be closed before the computer can be turned off.

When you use the hibernation feature, you do not have to close the applications. The Tablet PC stores the state of your Tablet PC to a file on the hard disk and then shuts down. The next time you turn on your Tablet PC, you return to exactly where you left off.

The BIOS Setup

2.1 Configuration Software

The **Tablet PC** can easily be configured to suit your personal needs. The built-in SETUP program allows you to setup various system parameters. The information is stored in a battery-backed CMOS memory; so when the power is turned off, your setup is retained. This Configuration Software is sometimes referred to as CMOS Setup, BIOS Setup, or simply the SETUP.

Note: The SETUP can be activated by pressing <F2> during system boot-up.

You are requested to perform the following one-time procedure immediately after you have upgraded/reprogrammed your BIOS:

- Press <F2> during system boot-up to get into the SETUP.
- Go to the **Save & Exit** sub-menu and choose **Restore Default**. Press **Enter**.
- Now, you can customize the BIOS for your personal needs.
For detail on the BIOS SETUP, read on.

Note: For information on the BIOS upgrade, contact your local Tablet PC dealer.

2.2 Running the Setup Utility

There are five major sub-menus in the SETUP program: **Main Setup**, **Advanced Setup**, **Boot Setup**, **Security Setup**, and **Save & Exit Setup**. Details on the five major sub-menus are described on the following pages.

Movement within the SETUP Utility

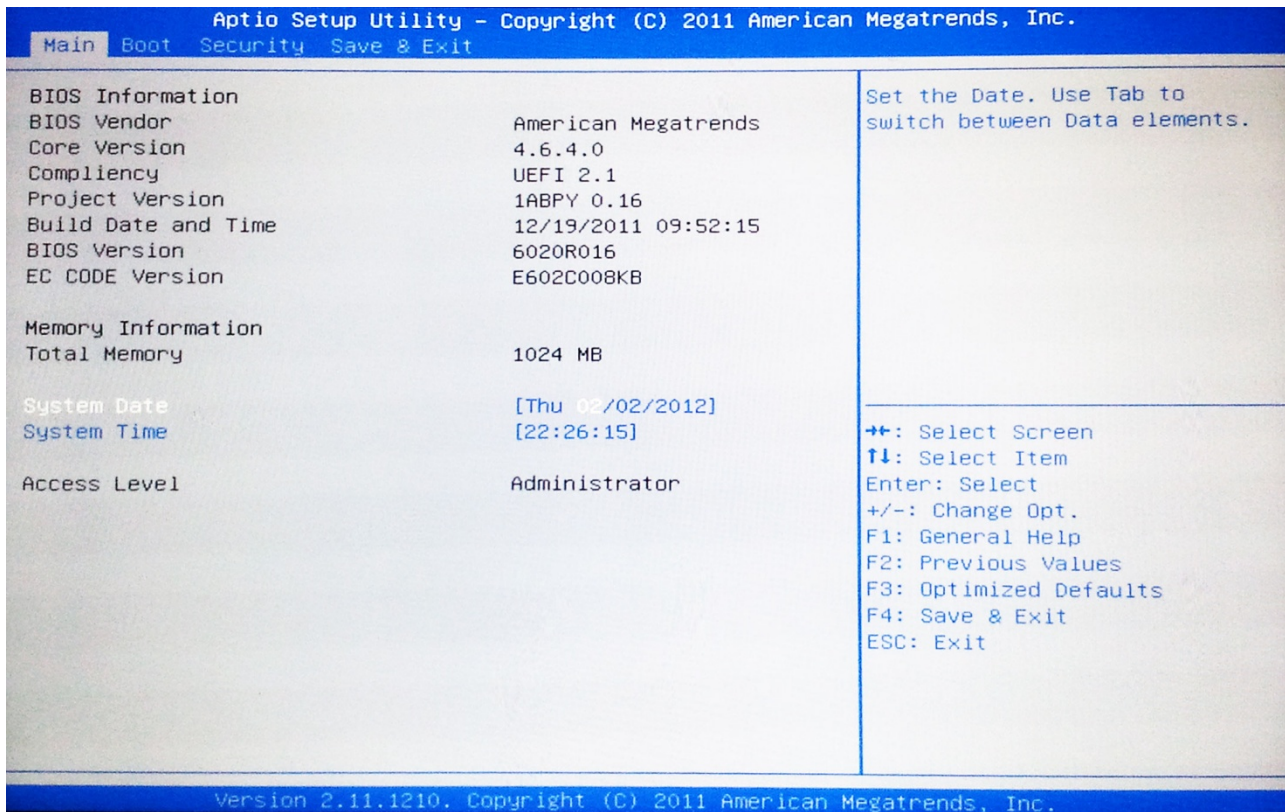
To move between the different item fields, use the cursor keys ↑ and ↓. To move between the four SETUP sub-menus, use the cursor keys ← and →. To change the value of a field, press the <+> and <-> keys. When you select one item, this item will be highlighted and a brief explanation would be displayed in the **Item Specific Help** box located on the right side of the screen. The followings are some of the most commonly used keys:

- Press <F1> to enter the menu of **General Help**.
- Press <F2> to Previous **Values**.
- Press <F3> to enter the menu of **Optimized Defaults**, and then press **Enter** to continue or press **Esc** to abort.
- Press <F4> to enter the menu of **Save Changes and Exit**. This would save modifications you have made. Then exit.
- Press **Enter** to execute command.
- Press **Esc** to get to the **EXIT** Setup sub-menu, or to the next higher-level sub-menu.

Note: The settings shown on the following sub-menu displays are factory default settings. The content of these sub-menu displays, described in the rest of this chapter, is subject to change in the future.

2.3 Main Setup

You will be greeted by this screen when you enter the **Main** Setup menu:



BIOS Information

BIOS Vendor:

This is for display only. This Shows the BIOS Provide by American megatrends.

Core Version:

This is for display only. This shows the version of the BIOS kernel version.

Project Version:

This is for display only. This shows the version of the AMI project version.

Build Date:

This is for display only. This shows the build date of the BIOS.

BIOS Version

This is for display only. This shows the version of the BIOS version.

EC CODE Version

This is for display only. This shows the EC Version of the BIOS.

Memory Information

Total Memory:

This is for display only. This shows the system total memory.

System Date:

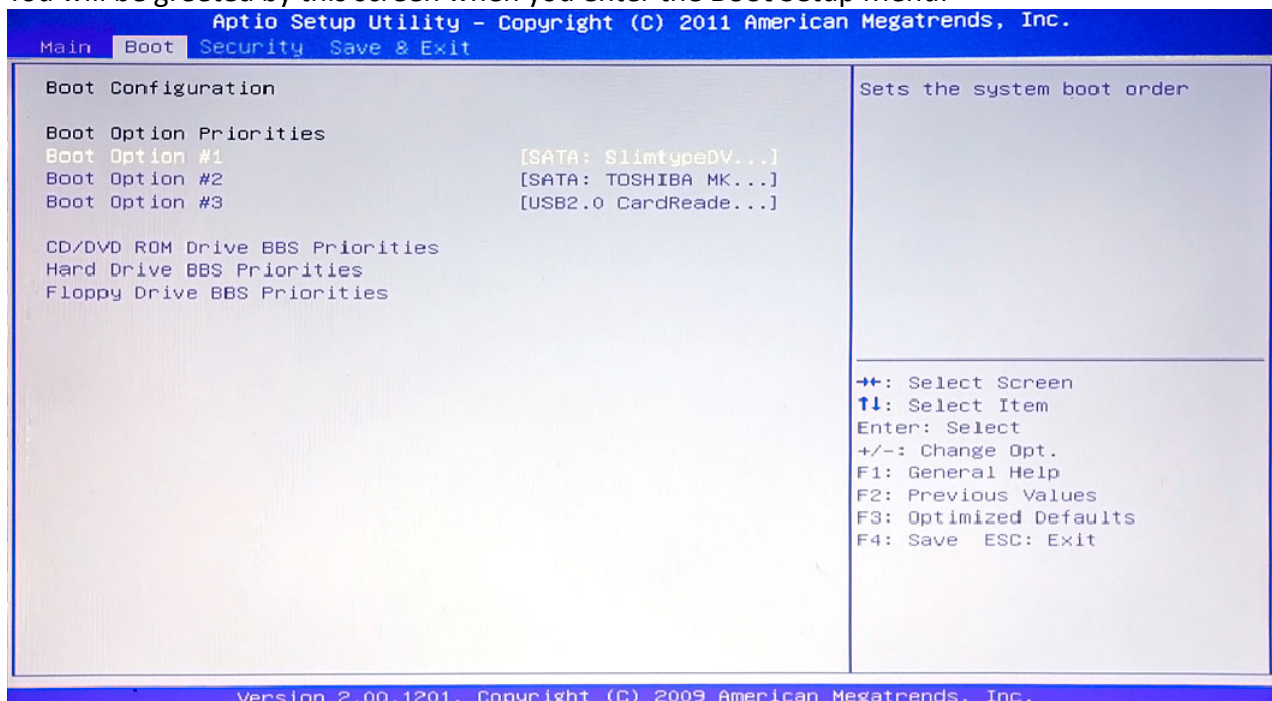
Today date. Use <Tab>, <Shift-Tab>, or <Enter> keys to move around these fields. To change the value, press <+> or <-> key. Set any date from year 1981 to 2099. It will automatically keep track of leap years. The system date can also be set from the operating system.

System Time:

Current time. Use <Tab>, <Shift-Tab>, or <Enter> keys to move around these fields. To change the value, press <+> or <-> key.

2.4 Boot Setup

You will be greeted by this screen when you enter the **Boot Setup Menu**:



Boot Option Priorities:

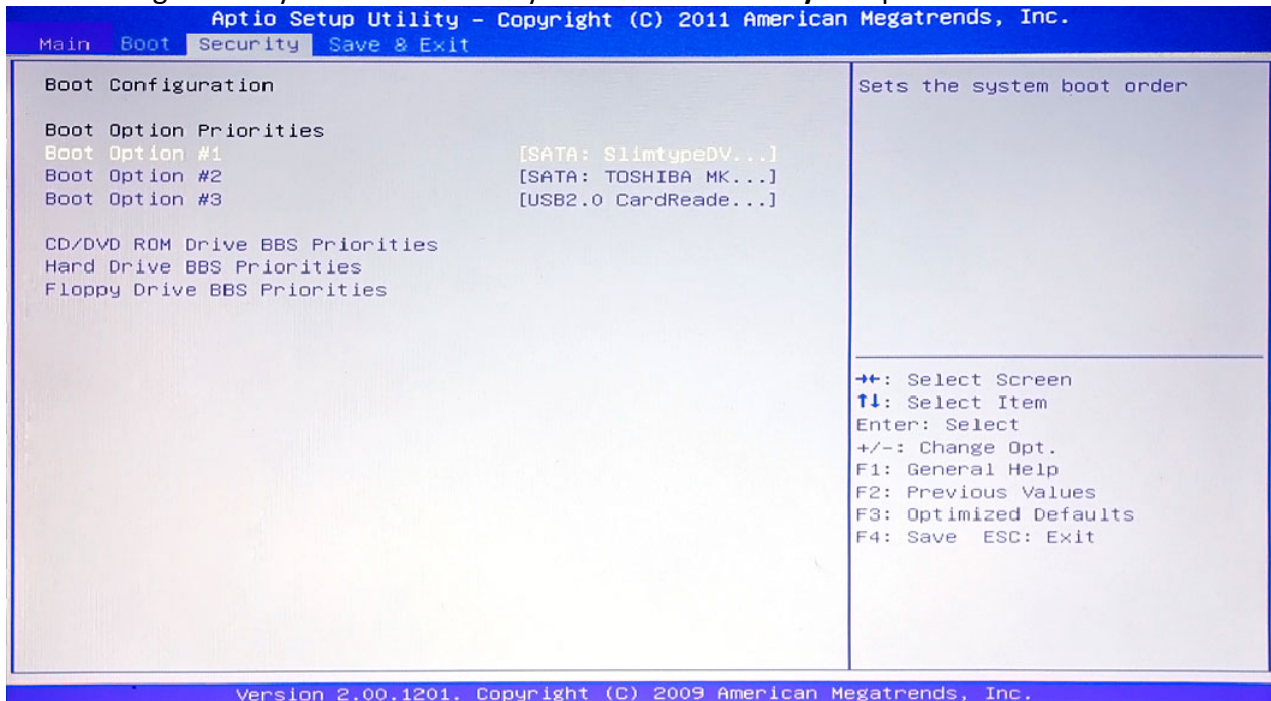
Boot option #1: Set the system First boot device.

Boot option #2: Set the system second boot device.

Boot option #3 : Set the system third boot device.

2.5 Security Setup

You will be greeted by this screen when you enter the **Security** Setup menu:



Administrator Password:

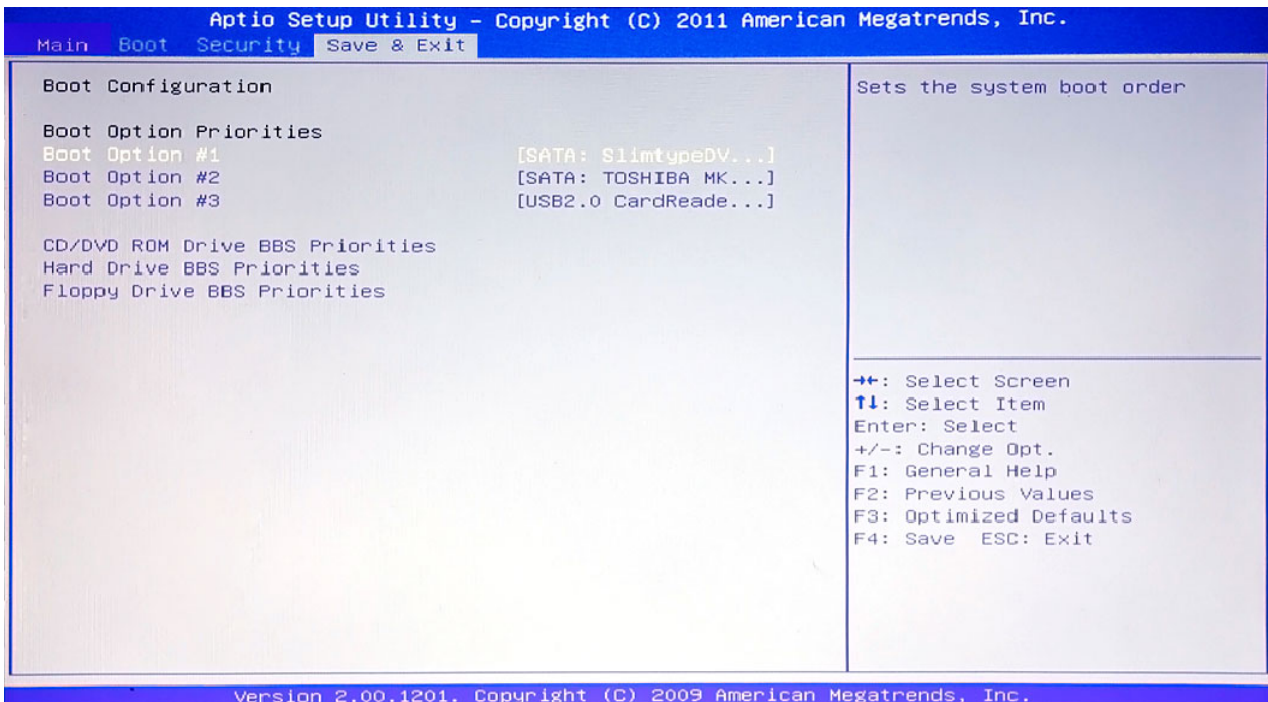
Press <Enter> to get into its sub-menu. In this sub-menu (not shown here), you can set system Supervisor Password.

User Password:

Press <Enter> to get into its sub-menu. In this sub-menu (not shown here), you can set User Password.

2.6 Save & Exit Setup

You will be greeted by this screen when you enter the **Exit** Setup Menu:



Save Changes and Exit:

Save the changes that you have just made, and then exit the SETUP.

Discarding Changes and Exit:

If you do not want to save the changes you have just made, choose this to reject all the changes and exit the SETUP.

Save Changes and Reset:

Save the changes that you have just made, and then restart the system.

Discard Changes and Reset

Without save any changes, and then restart the system.

Save Changes

Save changes done so far to any of the setup options.

Discard Changes

Discard changes done so far to any of the setup options.

Restore Defaults

Restore/Load Default values for all the setup options.

Save as User Defaults

Save the changes done so far as User Defaults.

Restore User Defaults

Restore the User Defaults to all the setup options.

System Utilities

3.1 The BIOS Flash Utility

You would get the BIOS flash utility (**Afudos.exe**), and the latest <rom-file> from **your hardware supplier**. The format for the <rom-file> name is **R8yRxxx.bin**; where “xxx” is a 3-digit running number and “y” is a sub number.

The following is the procedure for flashing BIOS:

- Boot up to Native MS-DOS mode. Make sure **emm386.exe** and **himem.sys** are not loaded into the system memory.
- Enter the following DOS command from the USB drive:
Afudos <bios-file> /b /p /n /x

The flashing will be completed when the flashing process arrive 100%.

Note: The flash utility program will issue a warning message, if the ROM file and the system’s motherboard do not match with one another.

3.2 The EC Flash Utility

You would get the EC flash utility (**dos4gw.exe**, **OEC.exe**), and the latest <rom-file> from **your hardware supplier**. The format for the <rom-file> name is **ER8Cxxx.bin**; where “xxx” is a 3-digit running number.

The following is the procedure for flashing EC:

- Boot up to Native MS-DOS mode. Make sure **emm386.exe** and **himem.sys** are not loaded into the system memory.
- Enter the following DOS command from the USB drive:
OEC -p <ec-file>

The flashing will be completed when the system automatically shut down.

Note: The flash utility program will issue a warning message, if the ROM file and the system’s motherboard do not match with one another.

General hardware problems / possible causes and solutions

Some common hardware problems and recommended solutions are in the table below:

1. System Ceased Operation during the Execution of the Program.

Cause: error by using the current procedure. Solution: Click <Ctrl>, <Alt> and keys. Windows operating system causes error; restart the system by using the power supply.

2. Operating System cannot be restored to the Using State.

If the operating system cannot resume operation after a pause, please check the following possible causes: The battery may have a malfunction, or the current power level may be very low. To solve this problem, please connect an external power supply such as the AC adapter.

3. The System cannot Shutdown Normally.

Hold down the power button 4-6 seconds, until the system shuts down.

4. After Shutdown, if the System cannot reboot:

Connect the AC power adapter immediately; as it means that the battery did not have sufficient power to reboot.

5. Measures to Extend Battery Life?

Adjust the screen brightness to the minimum possible level.

Adjust the computer screen to the normal standard.

Remove the Tablet PC card if not often used.

Turn off the Tablet PC Bluetooth function.

Turn off the Tablet PC wireless network function.

Ensure that the power configuration setting is in the "Save power" mode.

6. Wireless Network Breaks after 2 to 3 Minutes on line, and cannot resume on-line.

This may be due to interference caused by channel, please change the AP's channel and re-line.

7. Tablet PC cannot connect to the Internet Network.

Internet service providers (ISP) account is not setup; please contact your network service company for assistance.

8. The Tablet PC has been online via a Wireless Network, but still cannot connect to another Computer.

Please check the device driver is installed correctly. If the driver is not installed correctly, press the [Start] -> [Control Panel] -> [System] -> [Device Manager] -> [Network Adapters], you will find a yellow exclamation mark on the network tag. If a yellow exclamation mark occurs, please use the driver CD to reinstall the device driver.

9. Good Signal Strength, but cannot connect to the Network.

Please check the TCP / IP address settings are correct or not.

10. If water accidentally penetrates the Tablet PC, how to solve this problem?

At this point, do not connect the Tablet PC's power supply, or it will cause more serious damage to the Tablet PC.

Unplug the power supply and power cord, remove any attached external devices (such as: drive). Dry any liquid that was spilled on the Tablet PC; wipe stains with a soft cloth to reduce potential damage to the unit. Dry the body and other equipment with fans, and then send it to the nearest Tablet PC repair center to diagnose and repair the Tablet PC by qualified engineers, in order to reduce the damage to the Tablet PC.

11. The computer cannot continue running.

An external or internal storage device could be the cause of this problem as it is not operating properly when storing the content.

Appendix A

Specifications

NOTE: Specifications are subject to change without any prior notice.

OS	Windows	Windows 7 Home Premium
Weight	Net Weight	About 1300g (include internal battery)
Dimension	Gross Weight	(228-240)×(190-200)×(28-35)mm (TBD based on 8.4" design)
Processor Configuration	Code Name	Intel Oak Trail
	Support Type	Z670
	Frequency	1.5G
	CPU/SOC TDP	3.0W
Chipset		Whitney Point
System Memory	Memory Type	DDR2 Memory 800Mhz
	Capacity	1GB to 2GB
OS Storage	Type	mSSD, mini PCI-E Interface
	Capacity	32G, optional 64G
Display	Size	AUO 8.4" 4:3 LCD resolution 800x600
	Type	Resistance screen Touch Panel 4 wire Optional Resistance screen Touch Panel 5 wire
	Brightness	450 NITS
	Glass	Standard
Features	BT	BT 3.0+EDR; must be compatible with BT 2.0
	WIFI	SDIO or USB Interface, Support 802.11bgn.
	3G (optional)	ZTE MC2718 with GPS1 capability enabled
	GPS(optional)	U-Blox6
R8 Cameras	Front Camera	1.3M
	Back Camera	3.0M with flashlight
Sensor	G-Sensor	3 axis
Audio	Audio	Built-in High Definition audio
	Speaker	Built-in 80hm 0.7W stereo speakers, 2 Speakers

		Microphone	Internal – Hi Quality 2 Array Mic.(矩阵高保真 Mic)	
Buttons		Hardware Key 9 keys	Power	
			Power on/off, standby/Wake up	
			P1	Application keys
			P2	
			P3	
			TBD	1
			TBD	1
			TBD	1
			TBD	1
Camera	1			
IO	Docking	Reverse Camera Input	In Docking(CVBS)	
	Table PC	Audio Port	1 Jack(Mic & Headphone), Four Pole	
		DC Jack	1	
		USB	1 USB 2.0	
ME Material	A Case	ABS+PC		
	B Case	ABS+PC		
AC adapter	Input	AC 110~240V		
Battery		Internal:10.8V 2890mAh Optional: External 10.8V 2890mAh		
Fanless		Yes		
Stylus		Yes		
Rubber Cover		Yes		
PCB size		Must fit into package which accommodates either 8.4" With option to have 8.9" display(8.9" Panel interface is LVDS)		

Appendix B

Regulatory Information

This appendix provides regulatory statements and safety notices on your Tablet PC.

Note: Marking labels located on the exterior of your Tablet PC indicate the regulations that your model

complies with. Please check the marking labels and refer to the corresponding statements in this appendix. Some notices apply to specific models only.

On the Use of the System

Class B Regulations

USA

Federal Communications Commission Radio Frequency Interference Statement

NOTE:

This equipment has been tested and found to comply with the limits for a Class B digital device pursuant to Part 15 of the FCC Rules. These limits are designed to provide reasonable protection against harmful interference in a residential installation. This equipment generates, uses, and can radiate radio frequency energy and, if not installed and used in accordance with the instructions, may cause harmful interference to radio communications. However, there is no guarantee that interference will not occur in a particular installation. If this equipment does cause harmful interference to radio or television reception, which can be determined by turning the equipment off and on, the user is encouraged to try to correct the interference by one or more of the following measures:

- Reorient or relocate the receiving antenna.
- Increase the separation between the equipment and receiver.
- Connect the equipment into an outlet on a circuit different from that to which the receiver is connected.
- Consult the dealer or an experienced radio/TV technician for help.

Any changes or modifications not expressly approved by the manufacturer could void the user's authority to operate the equipment.

Please note:

The use of a non-shielded interface cable with this equipment is prohibited.

Canada

Canadian Department of Communications Radio Interference Regulations Class B Compliance Notice

This Class B digital apparatus meets all requirements of the Canada Interference-Causing equipment regulations.

Cet appareil numérique de Classe B respecte toutes les exigences du Règlement Canadien sur le matériel brouilleur.

This digital apparatus does not exceed Class B limits for radio noise emissions from digital apparatus set out in the Radio Interference Regulations of the Canadian Department of Communications.

Le présent appareil numérique n'émet pas de bruits radio-électriques dépassant les limites applicables aux appareils numériques de la classe B prescrites dans le Règlement sur le brouillage radioélectrique édicté par le ministère des Communications du Canada.

Safety Notices

About the Battery

Caution Texts Concerning Lithium Batteries

DANISH

ADVARSEL! Lithiumbatteri – Eksplosionsfare ved fejlagtig håndtering. Udskiftning må kun ske med batteri af samme fabrikat og type. Levér det brugte batteri tilbage til leverandøren.

NORWEGIAN ADVARSEL: Eksplosjonsfare ved feilaktig skifte av batteri. Benytt samme batteritype eller en tilsvarende type anbefalt av apparatfabrikanten. Brukte batterier kasseres i henhold til fabrikantens instruksjoner.

SWEDISH VARNING: Explosionsfara vid felaktigt batteribyte. Använd samma batterityp eller en ekvivalent typ som rekommenderas av apparattillverkaren. Kassera använt batteri enligt fabrikantens instruktion.

FINNISH VAROITUS: Paristo voi räjähtää, jos se on virheellisesti asennettu. Vaihda paristo ainoastaan valmistajan suosittelemaan tyyppiin. Hävitä käytetty paristo valmistajan ohjeiden mukaisesti.

ENGLISH CAUTION: Danger of explosion if battery is incorrectly replaced. Replace only with the same or equivalent type recommended by the equipment manufacturer. Discard used batteries according to manufacturer's instructions.

DEUTSCH VORSICHT: Explosionsgefahr bei unsachgemäßem Austausch der Batterie. Ersatz nur durch denselben oder einen vom Hersteller empfohlenen gleich-wertigen Typ. Entsorgung gebrauchter Batterien nach Angaben des Herstellers.

FRENCH ATTENTION: Il y a danger d'explosion s'il y a remplacement incorrect de la batterie. Remplacer uniquement avec une batterie du même type ou d'un type équivalent recommandé par le constructeur. Mettre au rebut les batteries usagées conformément aux instructions du fabricant.

Attention (for USA Users)

The product that you have purchased contains a rechargeable battery. The battery is recyclable. At the end of its useful life, under various state and local laws, it may be illegal to dispose of this battery into the municipal waste stream. Check with your local solid waste officials for details in your area for recycling options or proper disposal.

About the AC Adapter

- Use only the AC adapter supplied with your Tablet PC. Use of another type of AC adapter will result in malfunction and/or danger.
- Do not use the adapter in a high moisture environment. Never touch the adapter when your hands or feet are wet.
- Allow adequate ventilation around the adapter when using it to operate the device or charge the battery. Do not cover the AC adapter with paper or other objects that will reduce cooling. Do not use the AC adapter while it is inside a carrying case.
- Connect the adapter to a proper power source. The voltage requirements are found on the product case and/or packaging.
- Do not use the adapter if the cord becomes damaged.
- Do not attempt to service the unit. There are no serviceable parts inside. Replace the unit if it is damaged or exposed to excess moisture.

Turning Off the Wireless LAN Radio

NOTE: Turning the wireless LAN radio off is not the same as disabling the wireless LAN card. It is not necessary to disable the card to meet the regulatory requirements.

While operating the Tablet PC in those French departments that do not allow use of the wireless LAN equipment, the user of the equipment must turn off the wireless LAN radio in order to comply with local regulations (see Chapter 2 for more information).

