



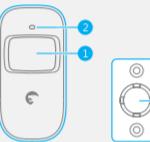
ES-D1A

Wireless Motion Detector

[www.etiger.com](http://www.etiger.com)

## EN Box Content

- 1 x PIR Motion Detector
- 1 x Bracket
- 1 x User Manual



1. Detection window
2. LED indicator
3. Bracket

## Before Using for the First Time

Open the case and remove the battery activation strip to activate the batteries. *Self-testing starts for 30 seconds.*

Images, illustrations and text are non-contractual. ETIGER and the ETIGER logo are registered trademarks and the property of ETIGER. Copyright © 2014 ETIGER. All rights reserved.

## Installation

Fix the bracket on the wall with screws and attach the detector to the bracket. Adjust the bracket to change the detection distance and angle. It is recommended to mount the detector 2m from the ground.

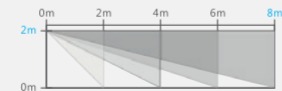
*Avoid mounting the detector close to windows, air conditioner, heater, refrigerator, oven, sunshine and places where the temperature changes fast or where the air stream flows frequently.*

*If two detectors are installed in the same detection scope, adjust the location to avoid interferences and false alarms.*

*The detector is more sensitive to cross movements than vertical movements.*



Top view



Side view

Detection scope

## Mode Setting

### Testing mode

Once the self-testing is complete, long press the test button. The sensor switches to testing mode, and scans once every 10 seconds. After 3 minutes, the LED blinks twice, and the sensor switches to working mode.

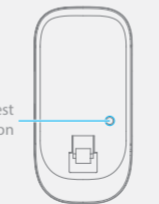
### Working mode / Stand-by mode

In working mode, if the sensor is triggered more than twice within 3 minutes, it will switch to standby mode to save power. If no movement is detected within the next 3 minutes, the sensor goes back to working mode.

### Register the detector in the alarm system

Switch to Connection Mode on the control panel. Press the test button of the sensor twice. The control panel beeps once: the motion detector is registered. If you hear two beeps, the detector has already been connected.

To check if the registration is complete, arm the system and trigger the sensor again. If the siren rings out, the registration is successful.



## Specifications

**Power Supply:**  
DC 3V (AA 1.5V LR6 x2)

**Static current:**  
≤90uA

**Transmitting current:**  
≤9.5mA

**Transmission distance:**  
≤ 80 m (in open area)

**Radio-frequency:**  
315MHz (±75KHz)

**Housing material:**  
ABS plastic

**Operating conditions:**  
Temperature: -10°C ~ +55°C  
Relative Humidity: ≤80% (non-condensing)

**Detector dimensions:**  
107 x 53 x 32 mm

**Bracket dimensions:**  
52 x 30 x 26.5 mm

## LED indications

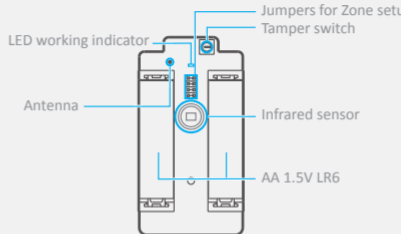
**Blinks continuously:** Self-testing

**Blinks once:** An intruder is detected

**Blinks twice:** Self-testing is complete; entering working mode.

**Blinks 3 times every 3 seconds:** Under-voltage indication: the batteries must be replaced (the user will be informed by SMS when the batteries are low if the detector is registered in the control panel).

## PCB Layout



**Infrared sensor:** Detects the infrared rays released by human body motion. Do not touch the surface. Keep the surface clean.

**Tamper switch:** When the alarm system is armed, the tamper switch will trigger the alarm if the case is opened.

**Jumpers for Zone setup:** The jumpers enable you to assign the detector to a specific zone. Refer to the user manual of your alarm system for more information on zone set up.

## Standards



This product bears the selective sorting symbol for waste electrical and electronic equipment (WEEE). This means that this product must be recycled or dismantled to minimize its impact on the environment. For further information, please contact your local or regional authorities. Electronic products not included in the selective sorting process are potentially dangerous for the environment and human health due to the presence of hazardous substances.



In compliance with European laws.



This product was designed and manufactured in compliance with Directive 2002/95/EC of the European Parliament and of the Council on the restriction of use of certain hazardous substances in electrical and electronic equipment (RoHS Directive - RoHS) and is deemed to comply with the maximum concentration values set by the European Technical Adaptation Committee (TAC).

Manufactured in China.



Wild instinct of Technology!

This user manual is available in other languages at [www.etiger.com/eu/support](http://www.etiger.com/eu/support)



ETIGER EUROPE  
Rue de la Loi, 25, 7100 La Louvière, Belgique  
[service@etiger.com](mailto:service@etiger.com)

## FCC Information and Copyright

This equipment has been tested and found to comply with the limits for a Class B digital device, pursuant to part 15 of the FCC Rules.

These limits are designed to provide reasonable protection against harmful interference in a residential installation. This equipment generates,

uses and can radiate radio frequency energy and, if not installed and used in accordance with the instructions, may cause harmful interference

to radio communications. However, there is no guarantee that interference will not occur in a particular installation. If this equipment does

cause harmful interference to radio or television reception, which can be determined by turning the equipment off and on, the user is

encouraged to try to correct the interference by one or more of the following measures:

- Reorient or relocate the receiving antenna.
- Increase the separation between the equipment and receiver.
- Connect the equipment into an outlet on a circuit different from that to which the receiver is connected.
- Consult the dealer or an experienced radio/TV technician for help.

### 15.19 Labelling requirements.

This device complies with part 15 of the FCC Rules. Operation is subject to the following two conditions:

- (1) This device may not cause harmful interference, and
- (2) this device must accept any interference received, including interference that may cause undesired operation.

changes or modifications not expressly approved by the party responsible for compliance could void the user's authority to operate the equipment.