

# SUPERTOOTH



## SUPERTOOTH DISCO TWIN

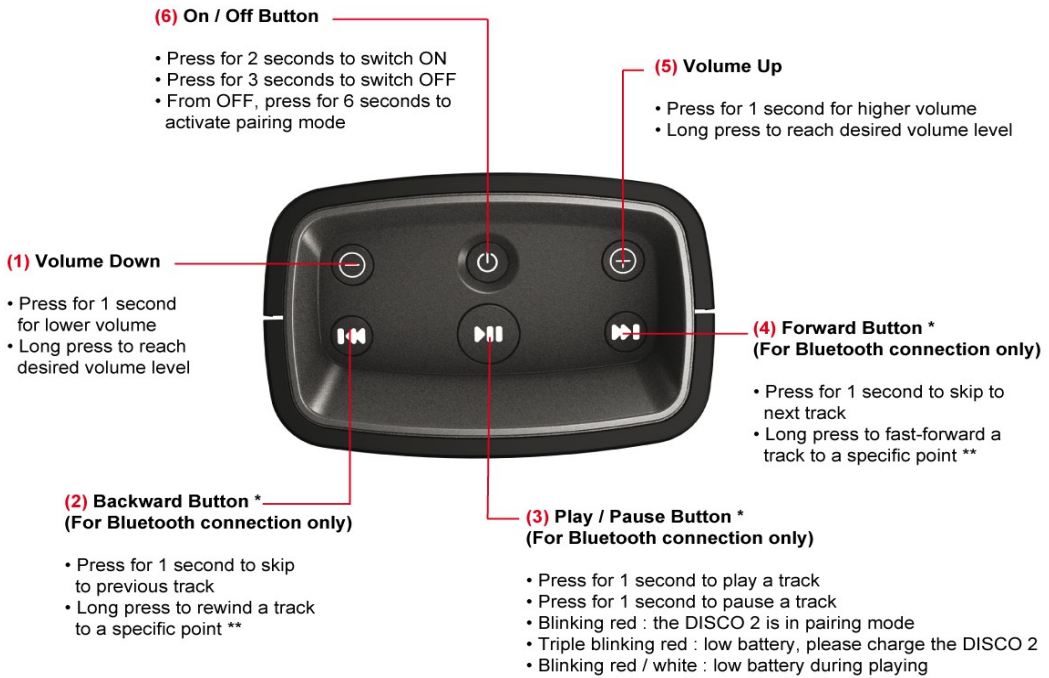
The portable Bluetooth A2DP stereo speaker with 2 speakers on the front & 1 bass reflex system at the back. You'll be blown away by 16 Watts of high & outstanding audio quality!



The SUPERTOOTH DISCO TWIN is a portable, wireless stereo speaker featuring an avant-garde design and compact footprint. Users can stream music wirelessly from any cell phone, tablet, computer, laptop or Mp3 player supporting Bluetooth A2DP. The SUPERTOOTH DISCO TWIN kicks out 16 watts RMS audio power, with two speakers on the front and a high efficiency bass reflex system situated at the back of the unit. The integrated rechargeable battery ensures 3 to 4 hours of non-stop, maximum-volume music, and up to 10 hours of moderately played melodies. The SUPERTOOTH DISCO TWIN comes with a 3.5 mm stereo jack cable for devices that do not support Bluetooth A2DP.

## Product Description

### External Controls



(\*) To access those commands, your phone / device must support Bluetooth AVRCP\* (Audio/Video Remote Control Profile), a technology enabling to control functions directly from the DISCO 2.

(\*\*) If supported by phone

### Back View



## Charging

1. Connect the charger's plug into the **Charge Port (7)** of the SUPERTOOTH DISCO TWIN. Connect the charger to an external power source.
2. The **Charge Indicator (8)** is steady red while charging. Charging is complete when the **Charge Indicator (8)** goes green.

## Turning the SUPERTOOTH DISCO TWIN On and Off

**Power On :** Press and hold the **On / Off Button (6)** for 2 seconds. A power on beep is heard in the speaker, all the buttons switch on and off automatically.

**Note 1 :** At first time use, when you turn it on, the SUPERTOOTH DISCO TWIN goes to pairing mode automatically (ready to be paired with your phone / device).

**Note 2 :** If you are not playing music, the SUPERTOOTH DISCO TWIN goes to standby mode automatically after a few seconds and all the buttons switch off. To check it is turned on, press any button. All the buttons switch on and off instantaneously.

**Power Off :** Press and hold the **On / Off Button (6)** for 3 seconds. A power off beep is heard in the speaker.

## Pairing the SUPERTOOTH DISCO TWIN with your Bluetooth A2DP Phone/Device

Pair the SUPERTOOTH DISCO TWIN with your phone/device to create the link or audio connection between the two. Pairing should be done at first connection to a phone/device.

**Important :** Make sure that your phone/device supports Bluetooth A2DP\* (Advanced Audio Distribution Profile) before proceeding.

**Note :** Any other device previously paired with the SUPERTOOTH DISCO TWIN must be turned off, or its Bluetooth must be disabled before proceeding.

1. The SUPERTOOTH DISCO TWIN must be turned OFF. Press and hold the **On / Off Button (6)** for 6 seconds until the **Play / Pause Button (3)** blinks red fast. The SUPERTOOTH DISCO TWIN is ready to be paired.
2. While the SUPERTOOTH DISCO TWIN is in pairing mode, access the Bluetooth menu of your phone. Turn on its Bluetooth function then execute a Bluetooth search to find the SUPERTOOTH DISCO TWIN. (See your phone manual).
3. When your phone displays the list of Bluetooth devices, select ST DISCO TWIN.
4. If your phone asks for a password / pin code, enter 0000 and press OK.
5. The SUPERTOOTH DISCO TWIN beeps twice. It is ready to use with your phone.

\*A2DP (Advanced Audio Distribution Profile) is a technology enabling to stream stereo sound from an audio source (phone, PC, laptop, tablet, Mp3 player) to a stereo speaker or headset via Bluetooth. To do so both devices must support this profile.

## Using the SUPERTOOTH DISCO TWIN with your Bluetooth A2DP Phone/Device

**Important :** The SUPERTOOTH DISCO TWIN needs to be 'paired' with your Bluetooth A2DP phone/device first. Please refer to "Pairing the SUPERTOOTH DISCO TWIN with your Phone/Device" section.

### **Reconnecting the SUPERTOOTH DISCO TWIN with a Bluetooth A2DP phone / device already paired**

When you turn it on, the SUPERTOOTH DISCO TWIN reconnects automatically with the latest paired device. When you leave the Bluetooth operating range, with the SUPERTOOTH DISCO TWIN turned ON, it disconnects. When you come back into the Bluetooth operating range, press the **Play / Pause Button (3)** for 1 second to reconnect the latest paired device. The SUPERTOOTH DISCO TWIN beeps twice.

### **Streaming Music from a Bluetooth A2DP Phone/Device**

1. Go to your phone music player and play a track by pressing "Play" or the **Play / Pause Button (3)** for 1 second. If the SUPERTOOTH DISCO TWIN is connected, the music will be heard directly in the speaker. See your phone manual if needed.
2. Audio is now on the SUPERTOOTH DISCO TWIN. All the buttons switch on steady white, indicating that the phone is connected and streaming music via the SUPERTOOTH DISCO TWIN.
3. When it is connected, you can control the music using the buttons of the SUPERTOOTH DISCO TWIN. Please refer to "SUPERTOOTH DISCO TWIN Button Functions" section.

### **SUPERTOOTH DISCO TWIN Button Functions (for Bluetooth connection only)**

The following functions can be controlled using the buttons on the SUPERTOOTH DISCO TWIN.

To do so, your phone/device must support Bluetooth AVRCP\* (Audio/Video Remote Control Profile), a technology enabling to control functions directly from the SUPERTOOTH DISCO TWIN.

#### **For streaming Bluetooth A2DP Music**

- ▶ To **play** a track, press the **Play/Pause Button (3)** for 1 second.
- ▶ To **pause** a track, press the **Play/Pause Button (3)** for 1 second.
- ▶ To skip to the **next** track, press the **Forward Button (4)** for 1 second.
- ▶ To skip to the **previous** track, press the **Backward Button (2)** for 1 second.
- ▶ To **fast-forward** a track at a specific point, press and hold the **Forward Button (4)** then release to resume.
- ▶ To **rewind** a track at a specific point, press and hold the **Backward Button (2)** then release to resume.
- ▶ To **increase the volume** level, press the **Volume Up Button (5)** for 1 second or hold the button until you reach the desired volume level.
- ▶ To **decrease the volume** level, press the **Volume Down Button (1)** for 1 second or hold the button until you reach the desired volume level.

\* Audio/Video Remote Control Profile is a Bluetooth profile that allows Bluetooth devices to control media playback on remote devices.

## Using the SUPERTOOTH DISCO TWIN with a non Bluetooth A2DP Mp3 Player

You can connect directly an Mp3 player via the **Stereo Line Input (9)** situated at the back of the SUPERTOOTH DISCO TWIN.

## Connecting directly a non Bluetooth A2DP Mp3 player with the SUPERTOOTH DISCO TWIN

1. Plug one end of the supplied audio cable into the **Stereo Line Input (9)** and the other end into the output of your music player.
2. Press "Play" on your Mp3 player to stream music directly via the SUPERTOOTH DISCO TWIN.
3. Non Bluetooth devices won't support Play / Pause / Previous / Next commands from the SUPERTOOTH DISCO TWIN. Please use the buttons of your Mp3 player directly.

## Clearing settings or Reset

### Clearing the pairing settings of the speaker

1. Put the speaker to pairing mode: from OFF, press and hold the **On/Off Button (6)** for 6 seconds until the **Play/Pause Button (3)** blinks red fast
2. Press and hold the **Play/Pause Button (3)** for over 5 seconds until a beep is heard. The pairing list is now erased.

### Hardware resetting the speaker

Press and hold the **On/Off Button (6)** for over 35 seconds until the speaker turns off.

## SUPERTOOTH DISCO TWIN specifications

Bluetooth Compliance:  
Bluetooth version 3.0 specifications

Supported Bluetooth Profiles:  
- A2DP (Advanced Audio Distribution Profile)  
- Stereo music streaming  
- AVRCP (Audio/Video Remote Control Profile)

Operating Range:  
10 meters Bluetooth standard

Frequency:  
2.4 GHZ

Battery and Battery Life:

- ▶ Battery type: NI MH Power pack
- ▶ Music playing time (maximum volume level): 3 to 4 hours
- ▶ Music playing time (medium volume): 10 hours
- ▶ Stand-by time: 1500 hours
- ▶ Charging time: 2 hours

Audio Features:

- ▶ Dual high efficiency speakers + bass reflex system
- ▶ 16 Watt RMS power
- ▶ Compatible with any Bluetooth A2DP phone, PC, laptop, tablet or MP3 player
- ▶ Jack 3.5 auxiliary input for non Bluetooth A2DP Mp3 players, iPods or computers
- ▶ Wireless Play / Previous / Next / Pause / Volume control (AVRCP standard)

Multipairing:

- ▶ Maximum 8 phones paired
- ▶ 1 phone connected at a time

Special Features:

- ▶ Low battery / Charging indicator
- ▶ Illuminated controls

Size and weight:

- ▶ Height: 182 mm
- ▶ Width: 108 mm
- ▶ Depth: 70 mm
- ▶ Weight: 552.7 g

---

CAUTION  
RISK OF EXPLOSION IF BATTERY IS REPLACED  
BY AN INCORRECT TYPE.  
DISPOSE OF USED BATTERIES ACCORDING  
TO THE INSTRUCTIONS

NCC Statement:

根據 NCC 低功率電波輻射性電機管理辦法 規定:

第十二條 經型式認證合格之低功率射頻電機，非經許可，公司、商號或使用者均不得擅自變更頻率、加大功率或變更原設計之特性及功能。

第十四條 低功率射頻電機之使用不得影響飛航安全及干擾合法通信；經發現有干擾現象時，應立即停用，並改善至無干擾時方得繼續使用。前項合法通信，指依電信法規定作業之無線電通信。低功率射頻電機須忍受合法通信或工業、科學及醫療用電波輻射性電機設備之干擾。

Correct Disposal of This Product  
(Waste Electrical & Electronic Equipment)



(Applicable in the European Union and other European countries with separate collection systems). This marking shown on the product or its literature, indicates that it should not be disposed with other household wastes at the end of its working life. To prevent possible harm to the environment or human health from uncontrolled waste disposal, please separate this from other types of wastes and recycle it responsibly to promote the sustainable reuse of material resources. Household users should contact either the retailer where they purchased this product, or their local government office, for details of where and how they can take this item for environmentally safe recycling.

Business users should contact their supplier and check the terms and conditions of the purchase contract. This product should not be mixed with other commercial wastes for disposal.

This product has an embedded, non-replaceable battery, do not attempt to open the product or remove the battery as this may cause injury and damage the product. Please contact the local recycling facility for removal of the battery. The embedded, non-replaceable battery is designed to last the life time of the product.

Hereby, EURO COMMUNICATION EQUIPEMENTS, represented by Michel MARCHANT, CEO, declares that the SuperTooth® MODEL BTDT, is in compliance with the essential requirements and other relevant provisions of Directive 1999/5/EC of the European Parliament and of the Council of 9 March 1999 on radio equipment and telecommunications terminal equipment and the mutual recognition of their conformity.

**CE 0560**

For the whole declaration please visit : <http://www.supertooth.net/download>

Euro Communication Equipements SAS

Route de Foix D117

11500 NEBIAS (FRANCE)



The Bluetooth® word mark and logos are registered trademarks owned by Bluetooth SIG, Inc. and any use of such marks by Euro-CB is under license. Other trademarks and trade names are those of their respective owners.

**FCC/IC statements :**

Federal Communications Commission (FCC) Statement

Industry Canada (IC) Statement

15.21

You are cautioned that changes or modifications not expressly approved by the part responsible for compliance could void the user's authority to operate the equipment.

15.105(b)

This equipment has been tested and found to comply with the limits for a Class B digital device, pursuant to part 15 of the FCC/IC rules. These limits are designed to provide reasonable protection against harmful interference in a residential installation. This equipment generates, uses and can radiate radio frequency energy and, if not installed and used in accordance with the instructions, may cause harmful interference to radio communications. However, there is no guarantee that interference will not occur in a particular installation. If this equipment does cause harmful interference to radio or television reception, which can be determined by turning the equipment off and on, the user is encouraged to try to correct the interference by one or more of the following measures :

-Reorient or relocate the receiving antenna.

-Increase the separation between the equipment and receiver.

-Connect the equipment into an outlet on a circuit different from that to which the receiver is connected.

-Consult the dealer or an experienced radio/TV technician for help.

This device complies with Industry Canada licence-exempt RSS standard(s)

Operation is subject to the following two conditions :

1)This device may not cause interference and

2)This device must accept any interference, including interference that may cause undesired operation of the device.

**FCC/IC RF Radiation Exposure Statement :**

**This equipment complies with FCC/IC radiation exposure limits set forth for an uncontrolled environment. End users must follow the specific operating instructions for satisfying RF exposure compliance. This transmitter must not be co-located or operating in conjunction with any other antenna or transmitter**



## **Déclarations FCC / IC :**

Commission Federale des Communications (FCC)

Déclaration Industrie Canada (IC)

15,21

Vous êtes averti que les changements modifications non expressément approuvés par la partie responsable de la conformité pourraient annuler l'autorité de l'utilisateur d'exploiter cet équipement.

15.105 (b)

Cet équipement a été testé et jugé conforme aux limites pour un appareil numérique de classe B, conformément à la partie 15 des règles de la FCC / IC. Ces limites sont conçues pour fournir une protection raisonnable contre les interférences nuisibles dans une installation résidentielle. Cet équipement génère, utilise et peut émettre des fréquences radio et, s'il n'est pas installé et utilisé conformément aux instructions, peut causer des interférences nuisibles aux communications radio. Cependant, il n'existe aucune garantie que ces interférences ne se produiront pas dans une installation particulière. Si cet équipement provoque des interférences nuisibles à la réception radio ou télévision, ce qui peut être déterminé en éteignant et rallumant l'équipement, l'utilisateur est encouragé à essayer de corriger l'interférence par une ou plusieurs des mesures suivantes:

- Réorienter ou déplacer l'antenne réceptrice.
- Augmenter distance entre l'équipement et le récepteur.
- Brancher l'équipement dans une sortie sur un circuit différents-de celui sur lequel est branché le récepteur.

Consulter le revendeur ou un technicien radio / TV qualifié.

Cet appareil est conforme aux CNR d'Industrie Canada applicables aux appareils radio exempts de licence.

L'opération est soumise aux deux conditions suivantes:

- 1) Cet appareil ne peut causer d'interférences et
- 2) Cet appareil doit accepter toute interférence, y compris les interférences qui peuvent causer un mauvais fonctionnement de l'appareil.

### **FCC / IC Déclaration d'exposition aux radiations RF:**

**Cet équipement est conforme aux normes FCC / IC limites d'exposition aux radiations dans un environnement non contrôlé. Les utilisateurs doivent suivre les instructions de fonctionnement spécifiques de la conformité d'exposition aux RF. Cet émetteur ne doit pas être co-localisés ou fonctionnant en conjonction avec une autre antenne ou transmetteur.**