

INTERPHONE

F2S

Bluetooth Headset for Motorcycle



Features

VOX Technology
Intercom Technology
Multi-Point Connection
Auto-Volume Level Adjusting



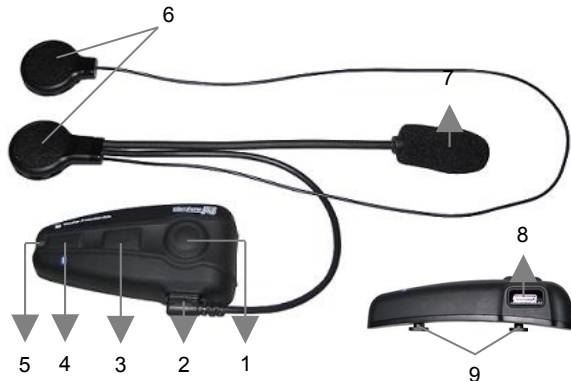
A. BTMOTOF2S PACKAGE:



B. PRODUCT DESCRIPTION:

BTMOTOF2S is a Bluetooth Headset designed for motorcycle rider or passenger who wishes to have reliable hands-free, wireless and clear communications while driving. This headset is equipped with hi-tech features such as: VOX Technology, Rider to Passenger Intercom, Multi-point Connection, and Auto-Volume Level Adjusting.

1. **MFB or Multi-Function Button**
(power on & off / pairing / answer / hang-up / reject / voice dial / intercom connect / etc.)
2. **Headset Plug**
3. **Volume Up**
4. **Volume Down**
5. **Status Indicator**
6. **Left/Right (L/R) Ear Speaker**
7. **Microphone** (On the flexible boom)
8. **Charger and Headset Socket**
9. **Hook**



C. CHARGING:

1. When the **Status Indicator (5)** turns Red, the battery is low. Charge the unit using the provided charger.
2. Connect the charger's plug to the **Charger Socket (8)** of the **BTMOTOF2S**. Then, plug the charger to an external power source. (*Note: **Status Indicator (5)** turns Red when charging*).
3. When the **Status Indicator (5)** turns Green, charging is complete.
4. Disconnect the charger.

Charger and Headset Socket



D. POWER ON OR OFF:

Power On: Press the **MFB (1)** until **Status Indicator (5)** turns blue. Or press for approximately 3 seconds, a beep will be heard.

Power Off: Press the **MFB (1)** until **Status Indicator (5)** turns red. Or press for approximately 5 seconds until 3rd tone will be heard.

E. PAIRING TO YOUR BLUETOOTH MOBILE PHONE:

1. From OFF, press and hold the **MFB (1)** of the **BTMOTOF2S** until the **Status Indicator (5)** turns blinking red/blue.
2. While the headset is in pairing mode, access the Bluetooth menu of your phone. Turn on the Bluetooth function then execute a Bluetooth search. (See your phone's manual).
3. When the phone displays the list of Bluetooth devices, select **BTMOTOF2S** then enter **0000** and press ok. Pairing is successful if the alternating red/blue lights of the **Status Indicator (5)** changes to blinking blue.

*Note: Some phones do not connect automatically to the kit after pairing. You need to press the **MFB (1)** (1st beep) to connect.*

Or use the menu of your phone:

*Go back to **Bluetooth** > **Paired devices** > highlight the name of this headset (**Interphone F2S**) > press **Options** > then press **Connect**.*

The **INTERPHONE F2S** is now ready to use.

F. INSTALLATION:

a) Installing the Clip Mount

IMPORTANT: There are 2 types of Headset Clips included in this package. A **Headset Clip with fastening screws** and a **Headset Clip with double-sided-Adhesive Sticker**. Use what suits best for your helmet.



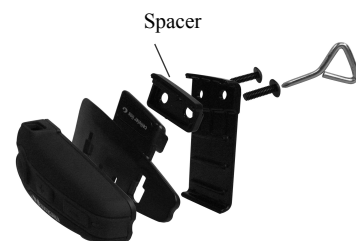
1. Using the Headset Clip with Fastening Screws

Take the **Headset Clip with fastening screws** and find the best location to fix it to the shell of the helmet.



Tighten the screws using the provided Screw Driver.

*Note: A **Spacer** may be needed to put in between the 2 parts of the Headset Clip (if the helmet's shell is thick).*



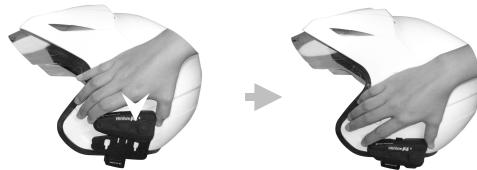
2. Using the Headset Clip with double-sided-Adhesive Sticker

Take the **Headset Clip with double-sided- Adhesive Sticker** and remove the film covering the other side. Find the best location and stick the clip to the outer shell of the helmet.



b) Mounting the BTMOTOF2S

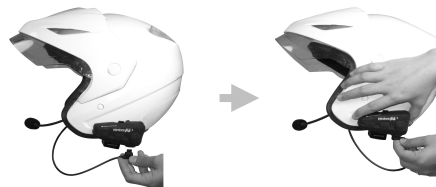
1. Take your **BTMOTOF2S** and slide it down into the slots in the **Headset Clip**. Make sure that it's perfectly fitted and locked into place.



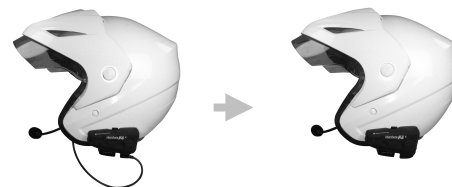
2. Stick the **Velcro pad** to the helmet's left and right ear pocket. Attach the **L/R Ear Speaker(6)** to it. Secure the cord of the **L/R Ear Speaker(6)** inside the helmet.



3. Connect the **Headset Plug(2)** to the **Headset Socket(8)**.



4. Secure the cord of the **Headset Plug(2)** inside the helmet. Ensure that only few centimeters of the cord come out.



You have successfully mounted the **BTMOTOF2S**.

G. Removing the BTMOTOF2S from your helmet

Remove the **BTMOTOF2S** by pushing down the lock as shown and then take out the **BTMOTOF2S** in an upward motion.



H. BASIC OPERATION:

Main MFB Functions:

Short Press MFB (1): Phone Related Commands

Long Press MFB (1): Intercom Related Commands

IMPORTANT:

The **BTMOTOF2S** needs to be 'paired' with your Bluetooth mobile phone before you can use the following functions. (See **Pairing to your Bluetooth Mobile Phone** on section E.)

To Make a Call:

Dial the number using your phone. Audio will automatically be on the headset.

*Note: With some phones like Siemens S55 and Panasonic X70, audio is always on the phone during an outgoing call. You will need to press the **MFB (1)** to transfer the audio to your headset.*

To Answer a Call:

- Assuming the **VOX** is activated: Accept a call by loudly saying a word within 10 seconds. (Example: When you receive the ring tone, Say loudly "Ok!") The call will be answered. Audio will be on the headset. (See **VOX Activation / Deactivation** on section I.)
- You also have the option to answer the call normally by pressing the **MFB (1)** for 1 second (1st beep).

To End a Call:

- Press the **MFB (1)** for 1 second to end the call (1st beep).

To activate Voice Dial:

IMPORTANT: Some phones needs training to activate voice dial function. Record at least one **voice tag**. (Kindly refer to the procedure in your phone's manual.)

1. Press the **MFB (1)** for 1 second (1st beep) to make a voice dial. A voice dial tone/ beep will be heard on the headset prompting the user to say the voice tag of the contact to call.
2. Say the voice tag. The voice will be played back to you, and then the phone will dial the number automatically.

To Reject a Call (For Handsfree Profile Phones only):

- Assuming the **VOX** is activated: Reject a call by being silent for 10 seconds. The call will automatically be rejected. (See **VOX Activation / Deactivation** on section I.)

To Set the Volume:

- Press the **Volume Up (3)** or **Down (4)** button repeatedly until the desired level is reached.

I. ADVANCED FUNCTIONS:

a. VOX Activation / Deactivation:

- When activated, the user can accept a call by saying any word within 10 seconds. The user can also reject a call by being silent for 10 seconds.
- When deactivated, use the **MFB (1)** to answer a call.

The **Voice Answer Mode** can be enable or disable when the kit is in standby mode (no ongoing call and no intercom communication).

Activation:

From Connected or standby, press and hold the **Volume Up (3)** button until 3rd tone. Then release.

Deactivation:

From Connected or standby, press and hold the **Volume Down (4)** button until 3rd tone. Then release.

b. Driver to Passenger INTERCOM:

The **INTERPHONE F2S** has a motorcycle intercom system that allows driver to passenger conversations. This intercom features full-duplex communication so driver and passenger may enjoy simultaneous conversations just like on the telephone.

INTERCOM Pairing Procedure:

1. Prepare two **BTMOTOF2S**. *Note: Make sure to switch off the phones paired to these two headsets.*
2. Set the two units to pairing mode (from off, press and hold the **MFB (1)** of the **BTMOTOF2S** until the **Status Indicator (5)** turns blinking red/blue).
3. When the two are set to pairing, short press the **MFB (1)** of one of the two units (this unit blinks red/blue fast). Pairing is successful if both **Status indicator (5)** of the two units are steady blue. Both headsets are now connected. Full duplex conversations can be made.

Using INTERCOM:

To Start an Intercom Conversation:

- Long press the **MFB (1)** for about 3 seconds until 2nd beep will be heard. **BTMOTOF2S** will connect to Intercom. Both headsets are now connected. Full duplex conversations can be made.

To End an Intercom Conversation:

- Short press the **MFB (1)** of the unit, the Intercom call will be ended.

To Set the Volume:

- Press the **Volume Up (3)** or **Down (4)** button repeatedly until the desired level is reached.

To Answer a Phone call:

- Answer using **VOX** by loudly saying a word within 10 seconds or short press **MFB (1)** button of the unit.

c. MULTI-POINT FUNCTION:

The **BTMOTOF2S** can simultaneously connect as Handsfree for phone for calls and Intercom. The **BTMOTOF2S** is active on both Handsfree and Intercom and will automatically connect to the selected one after the key press actions.

Key Press Actions:

Short Press MFB (1): Phone Connect

Long Press MFB (1): Intercom Connect

Using MULTI-POINT:

Refer to *“Using INTERCOM”* on section I, *“Phone BASIC OPERATION* on section H.

Receive Intercom call while in Phone call:

If you receive an intercom call when you already have an ongoing phone call, you will hear a special ring tone once (to indicate that your passenger wants to call you) and ongoing phone call will continue.

- If you want to answer the intercom call, press **MFB (1)** for 3 seconds (beep heard). **BTMOTOF2S** will connect to Intercom. Now full duplex conversations can be made.

Receiving a phone call while in Intercom:

If you receive a phone call when you are in Intercom conversation, Intercom connection will automatically disconnect during ringing and the other Intercom party will have a busy tone.

- If you want to answer the phone call, answer using **VOX** by loudly saying a word within 10 seconds or short press **MFB (1)** button of the unit. The phone call is now accepted; full duplex conversations can be made.

Note: After the phone call ended or rejected the Intercom connection will automatically reconnects. Now Intercom full duplex conversations continue.

d. Multi-Pairing / Switching Connections between Bluetooth devices

The **BTMOTOF2S** can be paired to 8 Bluetooth devices. An additional pairing will automatically delete the Bluetooth device that is paired the longest time. Thus, maintaining 8 Bluetooth devices in its memory.

You can easily switch to any of the paired Bluetooth devices by:

1. Disconnecting the currently used device by using its Bluetooth menu.
2. Connect to the wanted Bluetooth device by using its Bluetooth menu too.

Note: Reconnection to a paired Bluetooth device can also be done by pressing the **MFB(1)**. But when you press the **MFB(1)**, the **BTMOTOF2S** will attempt to connect to the last used Bluetooth device only. So it is recommended to connect to another paired Bluetooth device using the Bluetooth device's menu.

J. BTMOTOF2S SPECIFICATIONS:

Bluetooth Compliance:

Bluetooth Version 2.0

Operating Range:

Up to 10 meters

Frequency:

2.4GHz

Talk Time:

Up to 8 hours Mobile Phone

Up to 8 hours Intercom

Standby Time:

Up to 700 hours / 1 month

Charging Time:

4 hours

Battery type:

Rechargeable Lithium Polymer

Special Features:

- Paired devices maximum of 8
- Multipoint / intercom
- Incoming alert from other device when connected
- Full Duplex
- Full DSP noise cancellation / Echo cancellation
- Automatic Volume Adjustment depending on ambient noise and speed level
- Easy to find Volume / Multi-Point Functions
- Digital Volume Control
- Voice Recognition Dialing (If phone supports)
- VOX Command: Receive or reject incoming calls by voice control
- Water Proof
- Aerodynamic and Compact Shape
- Easy to install, compatible with most common helmets available on the market
- Main unit detachable from helmet mounting clip

Accessories:

- High Power ultra slim speaker with integrated microphone boom
- Two helmet mounting clips (clamp type and permanent type)
- Wall Charger

Dimensions (mm):

90mm x 46mm x 20mm

Weight:

35g excluding accessories

English

Correct Disposal of This Product

(Waste Electrical & Electronic Equipment)



(Applicable in the European Union and other European countries with separate collection systems)

This marking shown on the product or its literature, indicates that it should not be disposed with other household wastes at the end of its working life. To prevent possible harm to the environment or human health from uncontrolled waste disposal, please separate this from other types of wastes and recycle it responsibly to promote the sustainable reuse of material resources.

Household users should contact either the retailer where they purchased this product, or their local government office, for details of where and how they can take this item for environmentally safe recycling.

Business users should contact their supplier and check the terms and conditions of the purchase contract.

This product should not be mixed with other commercial wastes for disposal.

This product has an embedded, non-replaceable battery, do not attempt to open the product or remove the battery as this may cause injury and damage the product. Please contact the local recycling facility for removal of the battery. The embedded, non-replaceable battery is designed to last the life time of the product

CE0678

English

DECLARATION OF COMPLIANCE

Hereby, EURO COMMUNICATION EQUIPEMENTS, represented by Xavier MARCHANT, CEO, declares that the INTERPHONE F2S MODEL BTMOTOF2S , is in compliance with the essential requirements and other relevant provisions of Directive 1999/5/EC of the European Parliament and of the Council of 9 March 1999 on radio equipment and telecommunications terminal equipment and the mutual recognition of their conformity.

Nébias, april 26 2012

Xavier MARCHANT

CEO

For the whole declaration please visit :

<http://www.supertooth.fr/download>

Euro Communication Equipements Sas

Route de Foix D117

11 500 NEBIAS

FRANCE

Federal Communications Commission (FCC) Statement

Industry Canada (IC) Statement

15.21

You are cautioned that changes or modifications not expressly approved by the part responsible for compliance could void the user's authority to operate the equipment.

15.105(b)

This equipment has been tested and found to comply with the limits for a Class B digital device, pursuant to part 15 of the FCC/IC rules. These limits are designed to provide reasonable protection against harmful interference in a residential installation. This equipment generates, uses and can radiate radio frequency energy and, if not installed and used in accordance with the instructions, may cause harmful interference to radio communications. However, there is no guarantee that interference will not occur in a particular installation. If this equipment does cause harmful interference to radio or television reception, which can be determined by turning the equipment off and on, the user is encouraged to try to correct the interference by one or more of the following measures:

- Reorient or relocate the receiving antenna.
- Increase the separation between the equipment and receiver.
- Connect the equipment into an outlet on a circuit different from that to which the receiver is connected.
- Consult the dealer or an experienced radio/TV technician for help.

Operation is subject to the following two conditions:

- 1) This device may not cause interference and
- 2) This device must accept any interference, including interference that may cause undesired operation of the device.

FCC/IC RF Radiation Exposure Statement:

This equipment complies with FCC/IC radiation exposure limits set forth for an uncontrolled environment. End users must follow the specific operating instructions for satisfying RF exposure compliance. This transmitter must not be co-located or operating in conjunction with any other antenna or transmitter.