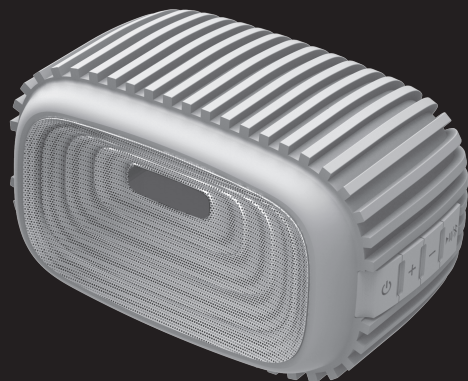


5B572BT

Bluetooth speaker



User Guide

5B572BT

BLUETOOTH® CONNECTIVITY

Wirelessly connect to your Smartphone. The Rover speaker is compatible with most devices equipped with Bluetooth® 2.1. Audible voice prompts guide you through the connection process.

IPX4 SPLASH AND SHOCK RESISTANT

With its protective rubberized shell, sealed ports, and IPX4 rating, the Rover speaker is ideal for camping, boating, outdoor entertaining.

HANDS-FREE PHONE ANSWERING

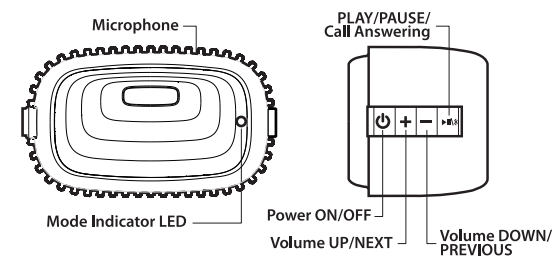
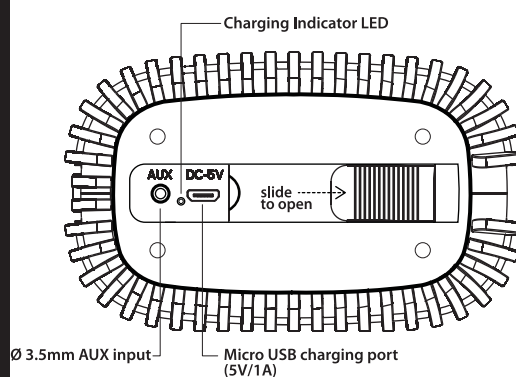
Make and answer calls on your mobile phone, hands-free.

WIRED CONNECTION OPTION

Connect your speaker to any device equipped with a standard Ø 3.5mm audio jack using the included auxiliary cable.

RECHARGEABLE LI-ION BATTERY

Supplies up to 6 hours of operating time.



FIRST-TIME BATTERY CHARGING

Fully charge your speaker before using. Connect the unit via the charging port to the USB port on your computer, or to a USB Wall Charger or Car Charger, using the included Micro USB charging cable. The Charging Indicator LED will light up red. Once charging is complete, the indicator light will turn off. Full charging time is approximately 3 hours. A full charge will provide up to 6 hours of playing time.

POWER ON/OFF

Press and hold the Power button for 3 seconds. The unit will announce "Welcome". Press and hold the button for 3 seconds to turn the unit off.

PAIRING

The unit will automatically go into Bluetooth® search mode when you turn it on. Turn on the Bluetooth® mode on your phone or other device. The Mode Indicator LED (blue light) will flash quickly, and the voice prompt will announce, "Waiting to connect to Bluetooth device".

Find the pairing name "Rugged Spkr 2" in your device's Bluetooth® settings, click on it, and wait for connection. If asked for a password, enter 0000 and confirm. The light will slowly flash blue when a connection is established. The voice prompt will announce, "Connected to Bluetooth device".

To disconnect Bluetooth®, press and hold the PLAY/PAUSE button for 3 seconds.

PLAY/PAUSE

Quickly depress the PLAY/PAUSE button to play or pause. Press and hold the button for 3 seconds to disconnect Bluetooth®.

VOLUME CONTROL

Press the "+" button to increase the volume. Press the "-" button to decrease the volume.

PREVIOUS/NEXT

Quickly press and hold the "+" button to skip to the next song. Quickly press and hold the "-" button to rewind to the previous song.

PHONE ANSWERING

When connected to your phone in the Bluetooth® mode, an incoming call will automatically transfer to your speaker. Music will automatically pause during a call and resume after the call.

Press the PLAY/PAUSE button to answer a call, or hold the button down to reject an incoming call. Press the button again to hang up.

WIRED CONNECTION

You can use your unit as a traditional wired speaker. Simply connect it with the included audio cable to any device equipped with a standard 3.5mm audio jack. The indicator light will flash. Note: When the speaker is connected via the audio jack, the Bluetooth function is disabled.

PRECAUTIONS

This product's water resistance rating is IPX4, meaning it is protected against splashing or spraying water from any direction. Do not immerse the unit in water or other liquid. Always store the unit with the power off. Avoid storing in places that are subject to extreme temperatures or high humidity. Store in well-ventilated areas. Make sure to recharge the battery if the unit is not in operation for a long period. Do not attempt to open the unit up. Keep the unit away from children.

TROUBLESHOOTING

PROBLEM	REMEDY
No sound	Make sure the speaker is properly connected to the output device. See the "PAIRING" section of this manual. Make sure that the volume of your connected device is turned on. Turn up the volume on the speaker. Make sure the speaker is charged. Make sure the speaker is within 30 feet, without obstructions, of the output device.
Can't answer or hang up calls	Some mobile devices will not support hands-free functions. Please check your phone's user guide.
Can't connect to two Bluetooth devices simultaneously	The speaker does not support connection of more than one output device at a time.
Can't connect wirelessly	Make sure your phone or other device is in the Bluetooth mode. See the "PAIRING" section of this manual. Make sure the speaker is within 30 feet, without obstructions, of the output device.
Hear a crackling noise or interference	Bluetooth is a wireless radio technology. Walls or large objects between the speaker and output device may interfere with the transmission. Make sure the speaker is within 30 feet, without obstructions, of the output device.

SPECIFICATIONS

Drivers: 4W, Ø 2" full range Neo driver
Battery: 3.7V 900mAh rechargeable lithium ion battery
System SNR: >65 dB @ 1W
THD: <10% at max volume
Loudness: SPL >65dB
Frequency response: 90Hz - 20kHz
Bluetooth® profiles: RDA Bluetooth® 2.1 - A2DP, AVRCP, HFP
Bluetooth® range: Line of sight, 30 ft. (10m)
Audio Connection: Ø 3.5mm line in
©2017 Zeikos, Inc. iHip is trademark of Zeikos, Inc. All Rights Reserved.
United States and international patent pending.
The Bluetooth® word mark and logos are registered trademarks owned by Bluetooth SIG, Inc.

All other trademarks and trade names are those of their respective owners. The illustrated product and specifications may differ slightly from that supplied. Designed by Zeikos, Inc. Manufactured in China. For ages 12+. This is not a toy. This product contains chemicals known to the state of California to cause cancer and/or birth defects or other reproductive harm.

Limited One Year Warranty.
Customer service: 1-800-500-4434.

To activate your product warranty, go to our website, www.ihip.com, and register this product. Zeikos Inc., 19 Progress St, Edison, NJ 08820

FCC Warning:

Any Changes or modifications not expressly approved by the party responsible for compliance could void the user's authority to operate the equipment.

This device complies with part 15 of the FCC Rules. Operation is subject to the following two conditions: (1) This device may not cause harmful interference, and (2) this device must accept any interference received, including interference that may cause undesired operation.

Note: This equipment has been tested and found to comply with the limits for a Class B digital device, pursuant to part 15 of the FCC Rules. These limits are designed to provide reasonable protection against harmful interference in a residential installation. This equipment generates, uses and can radiate radio frequency energy and, if not installed and used in accordance with the instructions, may cause harmful interference to radio communications. However, there is no guarantee that interference will not occur in a particular installation. If this equipment does cause harmful interference to radio or television reception, which can be determined by turning the equipment off and on, the user is encouraged to try to correct the interference by one or more of the following measures:

- Reorient or relocate the receiving antenna.
- Increase the separation between the equipment and receiver.
- Connect the equipment into an outlet on a circuit different from that to which the receiver is connected
- Consult the dealer or an experienced radio/TV technician for help.

FCC Radiation Exposure Statement:

This equipment complies with FCC radiation exposure limits set forth for an uncontrolled environment. This transmitter must not be co-located or operating in conjunction with any other antenna or transmitter.