

# **ULTRA CREATION LIMITED**

**BMW Keyfinder**

**PCBA**

**(Bluetooth locator)**

**(82 29 2 405 851)**

# USER MANUAL

## 注意事项/NOTES

在使用本产品之前请先仔细阅读本手册，以便合理安全的使用本机器。

Please read the manual carefully before using this product to be a reasonable safe use of the machine.

<b>目录/Contents</b> -----	2
<b>注意事项/Notes</b> -----	2
<b>一、面板按键操作及功能/Panel button operation and function</b> -----	3
<b>二、主图标/Main icon</b> -----	4
<b>三、APP 软件功能操作/The App software function operation</b> -----	4-12

## 一、面板按键操作及功能 /

Panel button operation and function

无 **N/A**

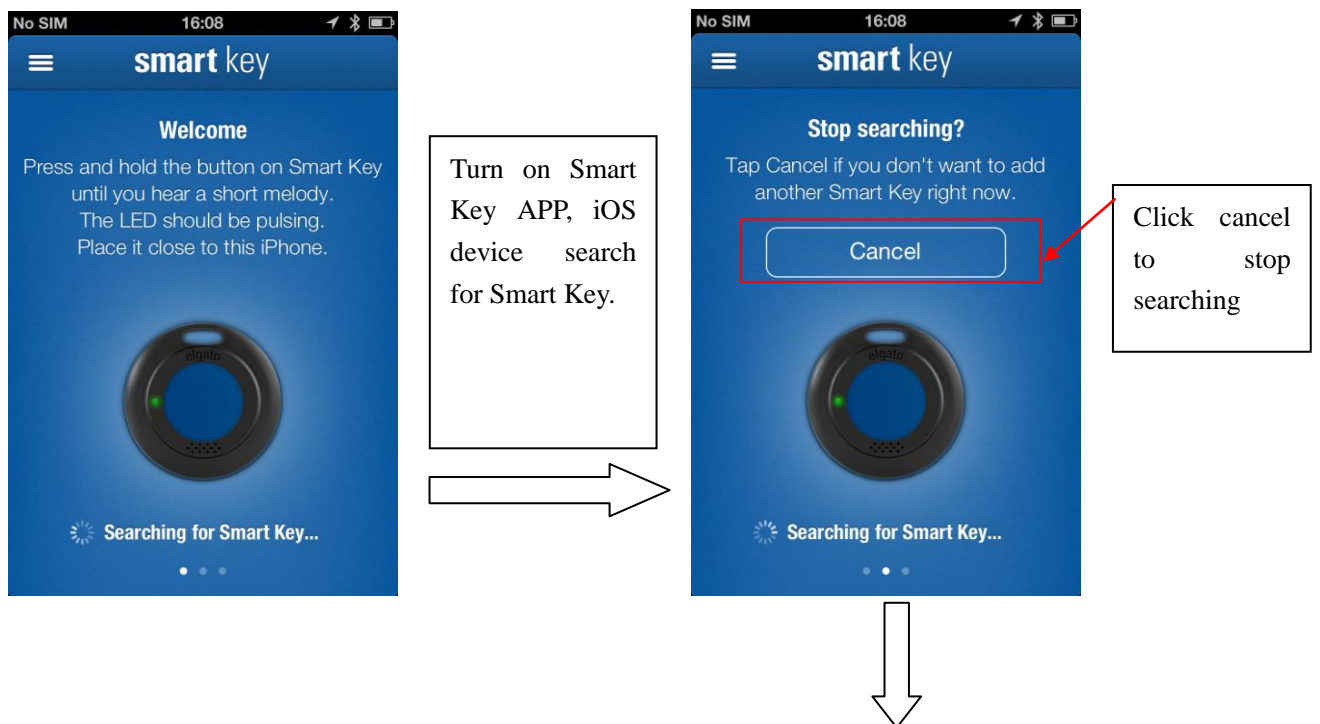
## 二、主图标/Main icon

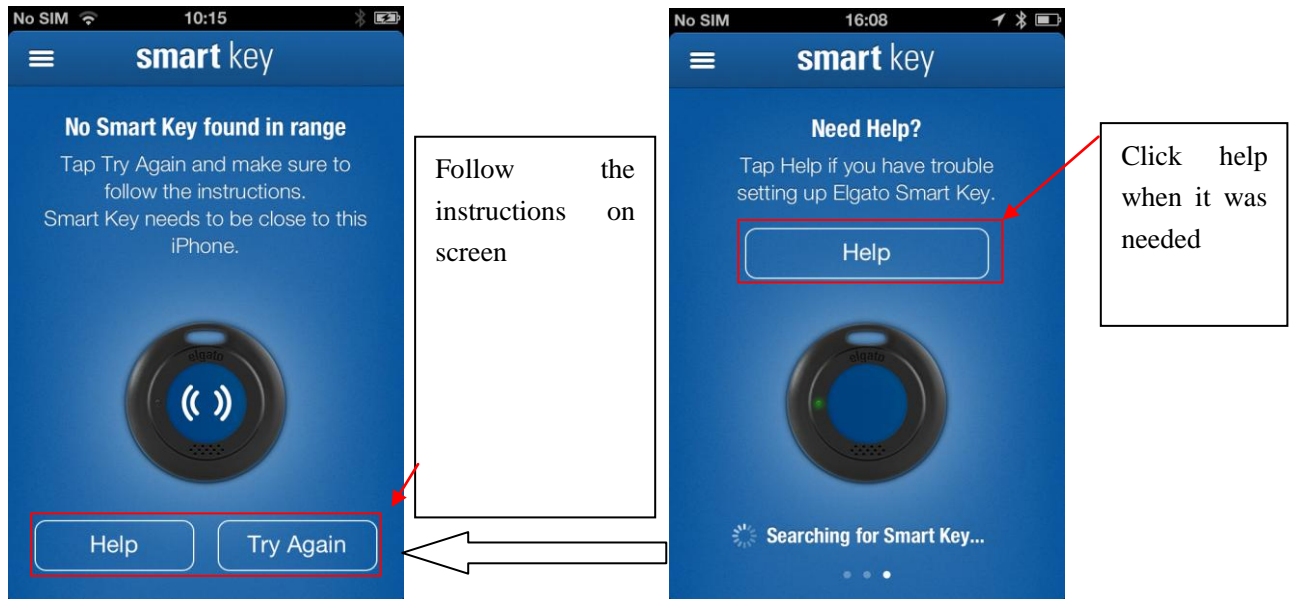


## 三、APP 软件功能操作/The App software function operation

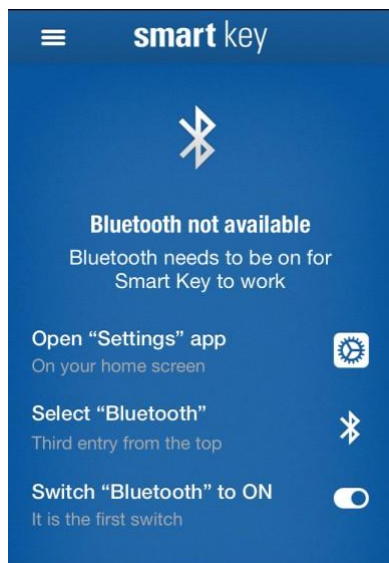
1、Click Smart Key APP icon to start searching for smart key.

1.1 iOS system turn on Bluetooth and start searching for smartkey

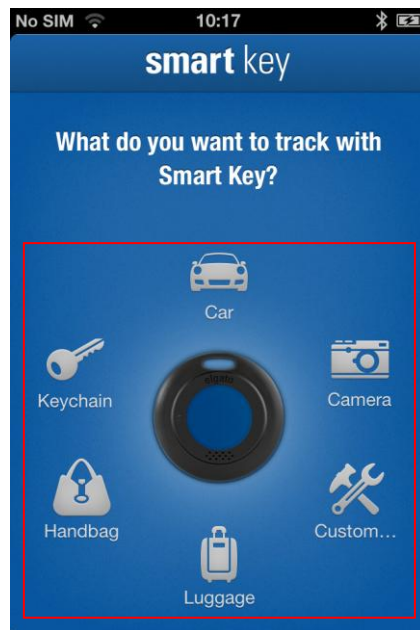




1.2 If Bluetooth is not turn on, it will show below page when you turn on Smart Key APP

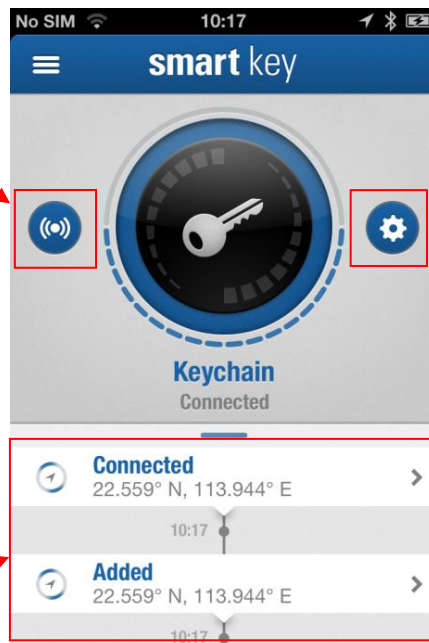


## 2、Searching and conneting



Follow the screen instructions

Operation page

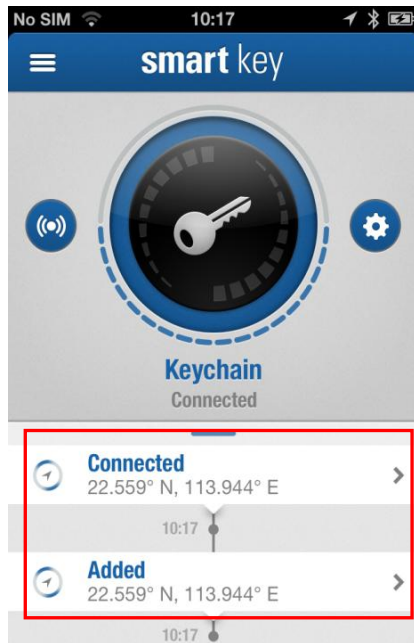


Smart Key  
buzzer on/off  
button

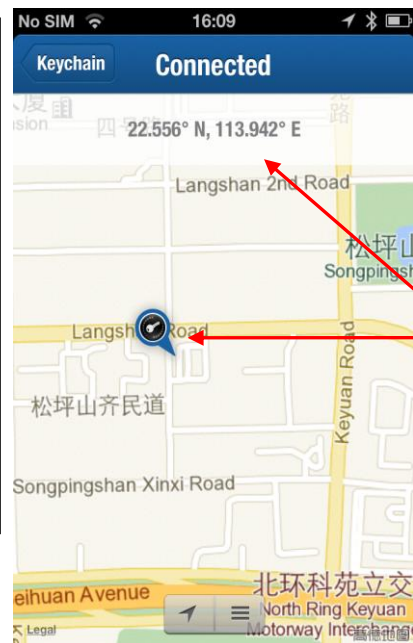
Setting

Record of device  
connected and  
disconnected time and  
location

### 3、 Using the map .

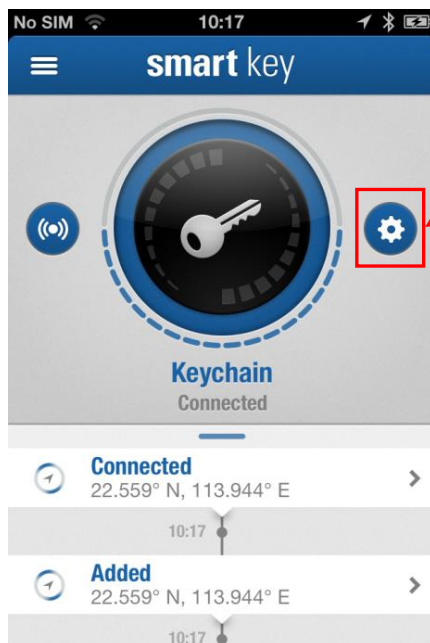


Click "Connected",  
"Added" will enter  
Map and shows the  
recorded location



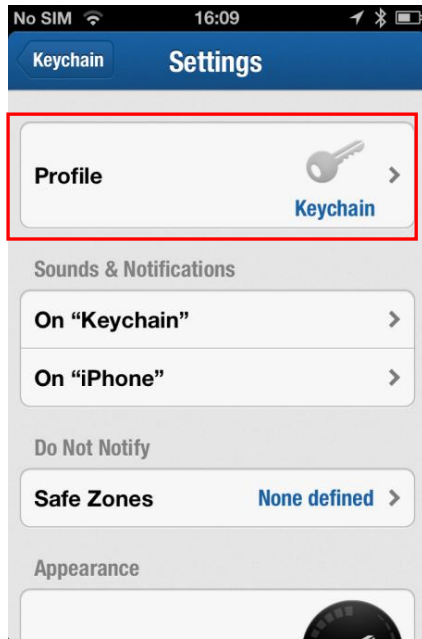
Connected  
location  
will be  
shown on  
the map

### 4. Setting.



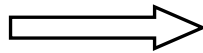
Click  
setting

#### 4.1 Set "Profile".



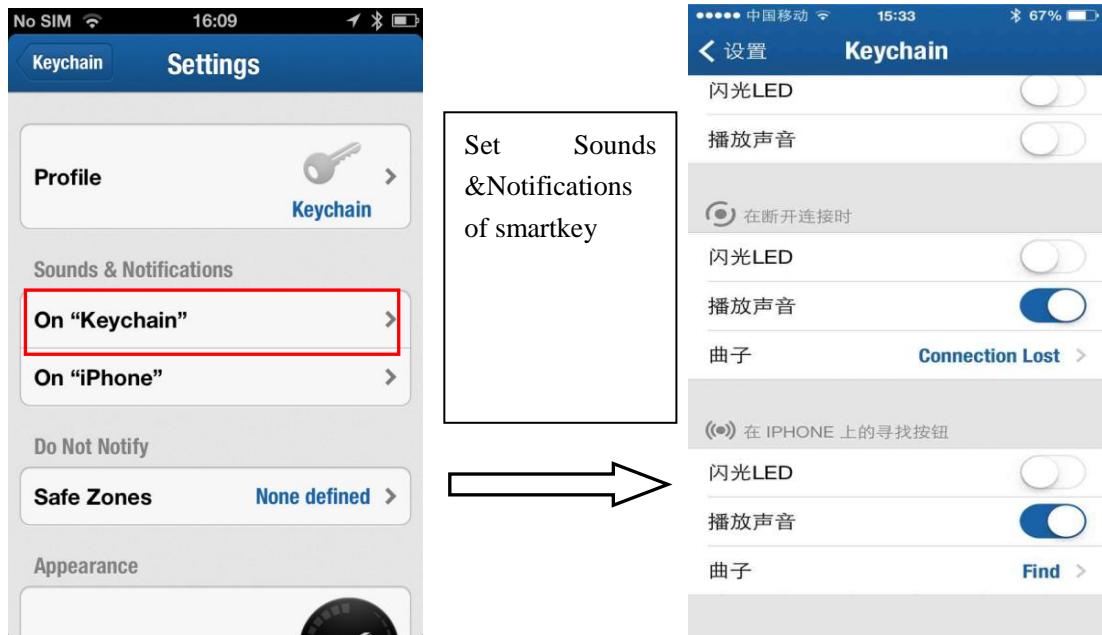
Click Profile



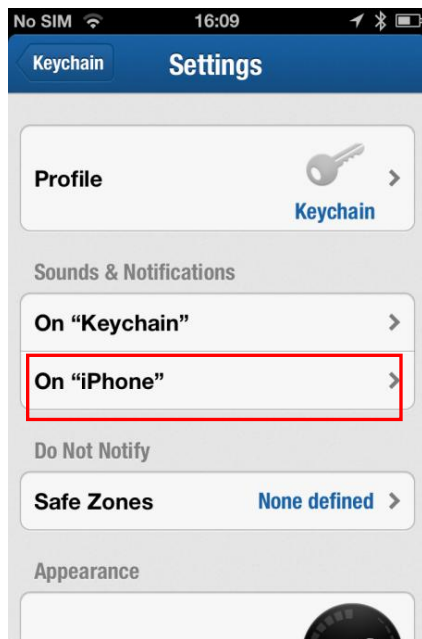
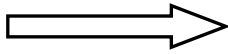




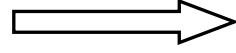
#### 4.2 Set "Sounds & Notifications".



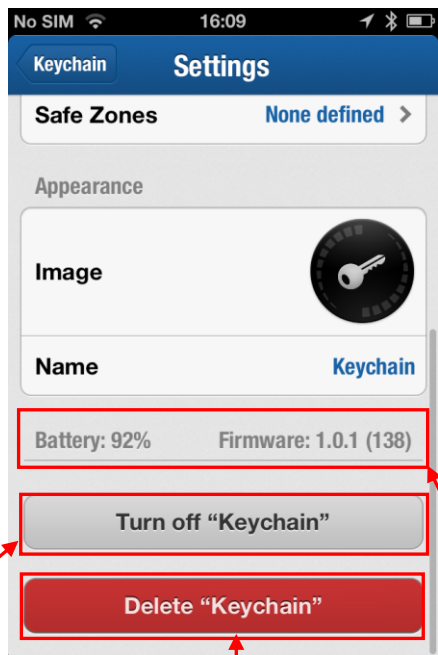
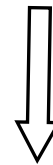
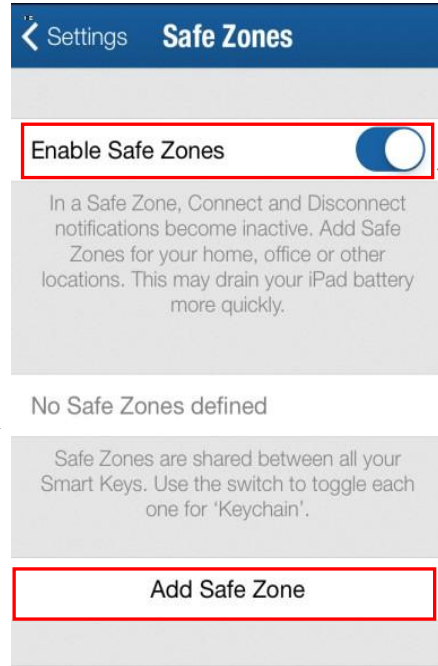
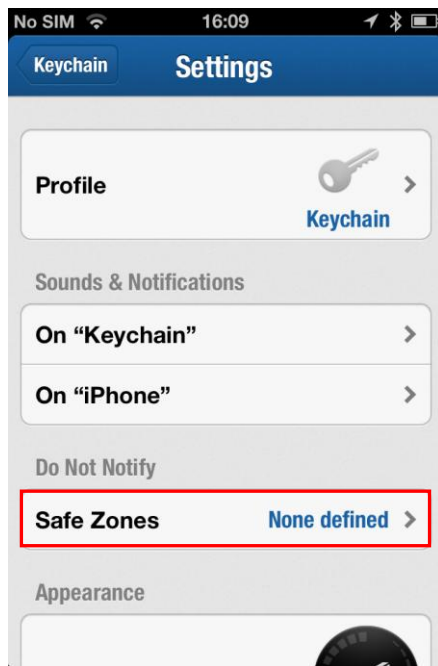
Set Sounds & Notifications of smartkey



Set iPhone's Sounds & Notification



4.3 Set Do Not Notify, check Smart Key battery, App version and turn on/off Smart Key.



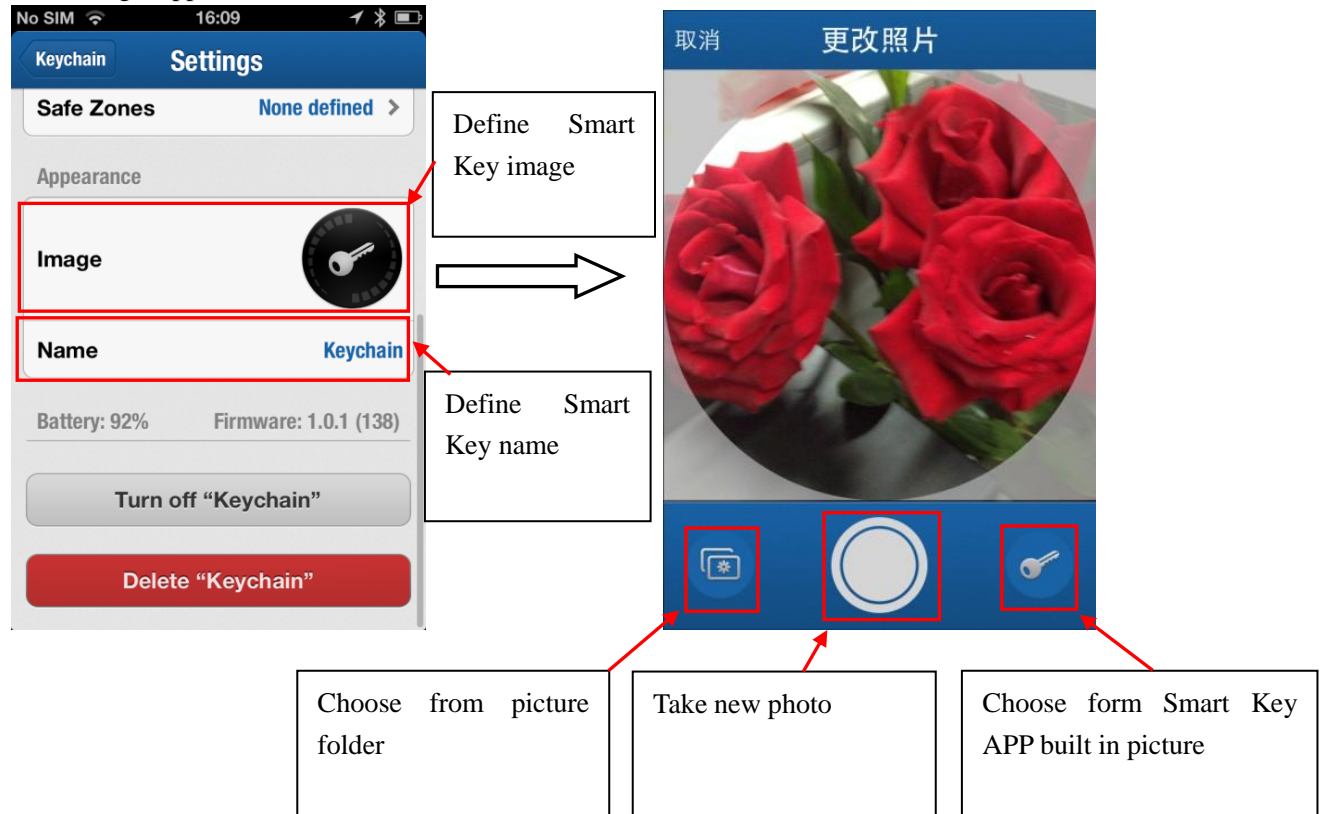
Turn On/off Smart Key

Delete Smart Key

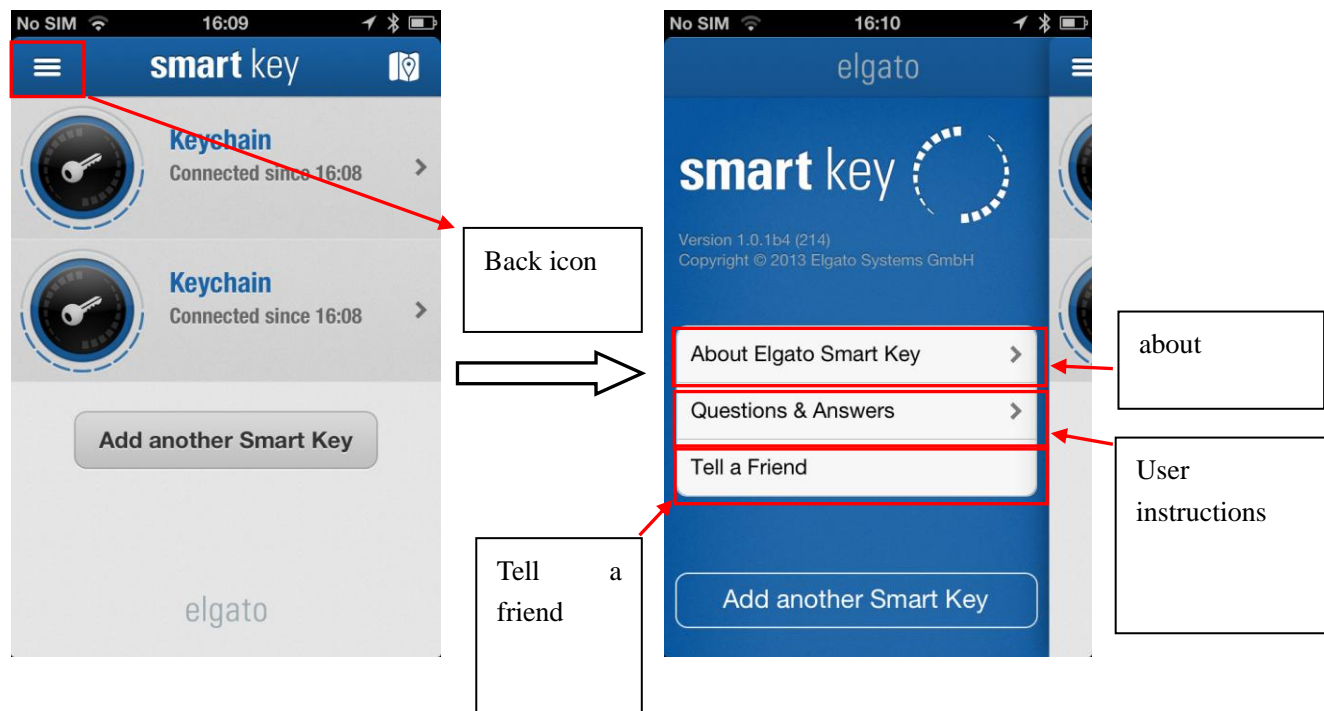
Battery level and app version

Safe zone

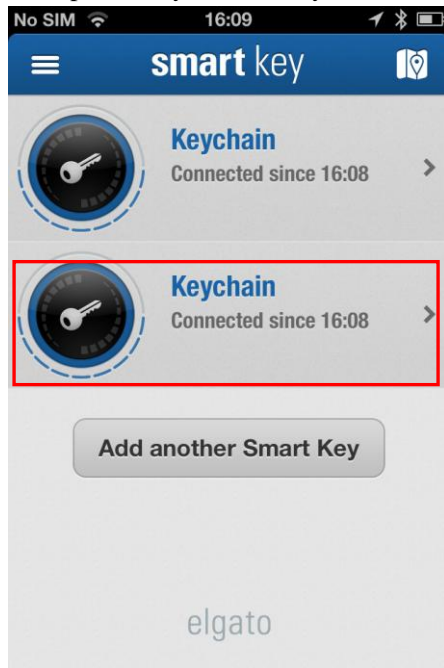
#### 4.4 Setting "Appearance".



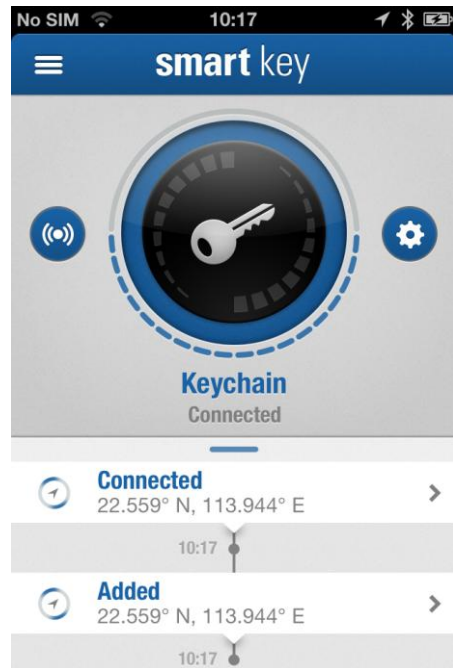
#### 5、 Function Introduction of "Elgato Smart Key".



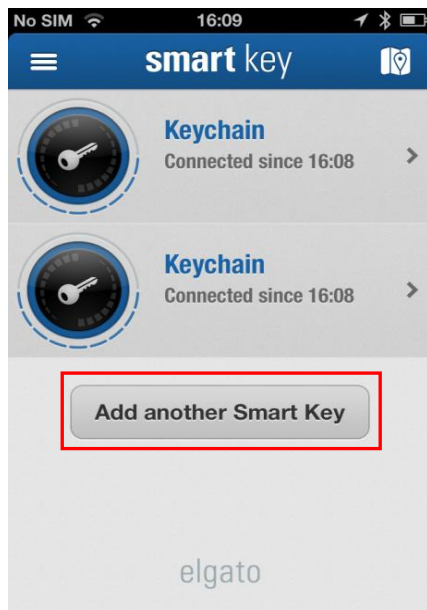
6、 Operate any “Smart Key “in “Smart key” list on APP.



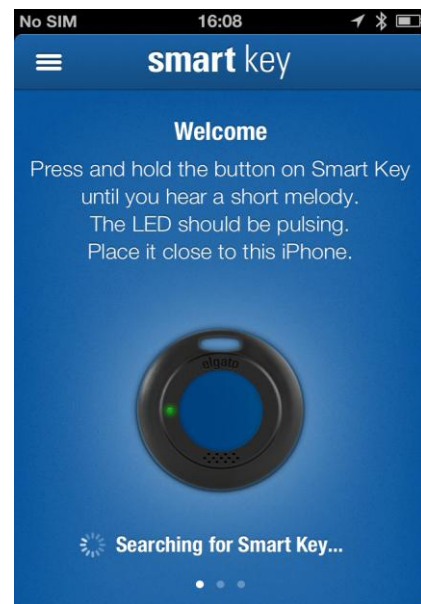
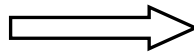
Click one of the connected device



7、 Add “Smart Key” .



Follow the instructions on screen



## **FCC STATEMENT**

This device complies with Part 15 of the FCC Rules. Operation is subject to the following two conditions:

- (1) This device may not cause harmful interference, and
- (2) this device must accept any interference received, including interference that may cause undesired operation.

NOTE 1: This equipment has been tested and found to comply with the limits for a Class B digital device, pursuant to part 15 of the FCC Rules. These limits are designed to provide reasonable protection against harmful interference in a residential installation. This equipment generates, uses and can radiate radio frequency energy and, if not installed and used in accordance with the instructions, may cause harmful interference to radio communications. However, there is no guarantee that interference will not occur in a particular installation. If this equipment does cause harmful interference to radio or television reception, which can be determined by turning the equipment off and on, the user is encouraged to try to correct the interference by one or more of the following measures:

- Reorient or relocate the receiving antenna.
- Increase the separation between the equipment and receiver.
- Connect the equipment into an outlet on a circuit different from that to which the receiver is connected.
- Consult the dealer or an experienced radio/TV technician for help.

NOTE 2: Any changes or modifications to this unit not expressly approved by the party responsible for compliance could void the user's authority to operate the equipment.

## **IC STATEMENT**

This device complies with Industry Canada licence-exempt RSS standard(s): Operation is subject to the following Two conditions:(1) this device may not cause interference, and (2) this device must accept any interference, including interference that may cause undesired operation of the device.

Le présent appareil est conforme aux CNR d'Industrie Canada applicables aux appareils radio exempts de licence. L'exploitation est autorisée aux deux conditions suivantes : (1) l'appareil ne doit pas produire de brouillage, et (2) l'utilisateur de l'appareil doit accepter tout brouillage radio électrique subi, même si le brouillage est susceptible d'en compromettre le fonctionnement.