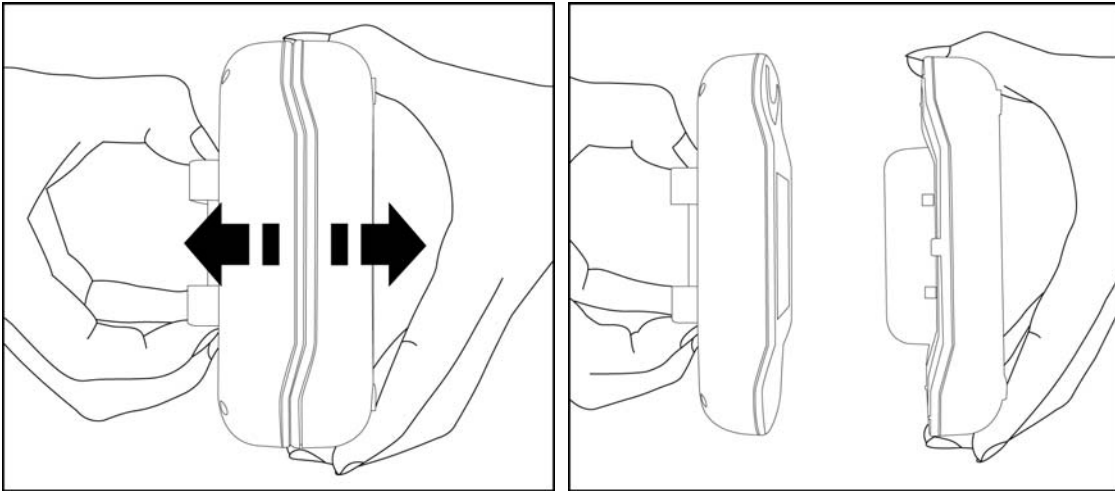


## INSTRUCTION MANUAL

Congratulations on your purchase of the new Williams-Sonoma wireless voice alert grill thermometer. This unit will allow you to see the temperature of your food cooking in the oven or on the grill from anywhere in your home. The unit allows you to be alerted by a voice alert telling you when your food is almost ready or ready and by beeps that tell the same. The following instructions will show you how to easily use the thermometer.

THE UNIT HAS A LOCKING CASE. THE TABS WILL HOLD IT CLOSED WHILE STORED. TO OPEN SIMPLY GRASP THE BATTERY COMPARTMENT OF THE RECEIVER AND PULL OUT. YOU WILL HEAR A CLICK AND THE UNIT WILL SEPARATE.

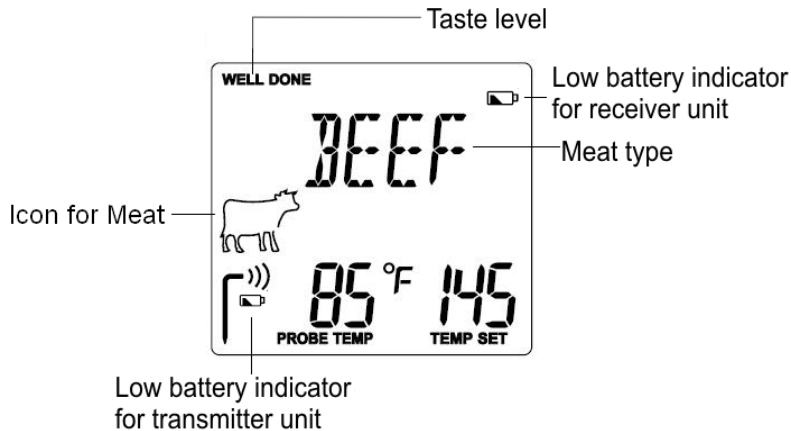


WHEN USED AS A THERMOMETER: First you must register the base unit with the remote unit (the remote unit has the display showing the food selections). To register the unit do the following:

- **Turn the unit on by holding the MODE button on the receiver unit until you hear the BEEP sound.**
- Plug in the stainless steel probe into the transmitter unit. This must be done within 120 seconds of turning the unit on.
- The unit should beep three times when turned on and the probe temperature should appear within 5-10 seconds of plugging in the probe. When the temperature appears the unit will beep once.
- If this does not happen repeat the process.

THE PROBE MUST BE PLUGGED INTO THE TRANSMITTER FOR THE UNIT TO WORK.

ONCE THE UNIT IS ON: Press the MODE button again to change the unit from the thermometer function to the timer function. This button will change the feature of timer/thermometer back and forth.



IF THE SIGNAL IS LOST: If the receiver unit is turned off and then on and the signal is lost do the following:

- Turn the receiver on by pressing the MODE button for two seconds.
- Once the unit is on hold the CLEAR button for several seconds until the probe temperature starts to blink with the --- showing.
- Press and hold the (TX) button inside the battery compartment of the transmitter or re-plug the temperature probe. This has to be done within 120 seconds of turning the unit on.
- If the unit registers the transmitter the unit will beep and show the probe temperature. If it does not register press and hold the (TX) button again.

HOW TO KNOW IF THE SIGNAL IS LOST: The receiver unit will normally work within 150 feet of the transmitter. If the receiver is taken out of range or there is abnormal external interference the receiver may not be able to receive the transmission from the transmitter. If this happens the unit will alert you by beeping once for every 3 seconds to tell you to re-sync the signal. If this happens you need to move the unit close to the transmitter and follow the instructions above.

**SETTING THE SELECTED FOOD TEMPERATURE:**

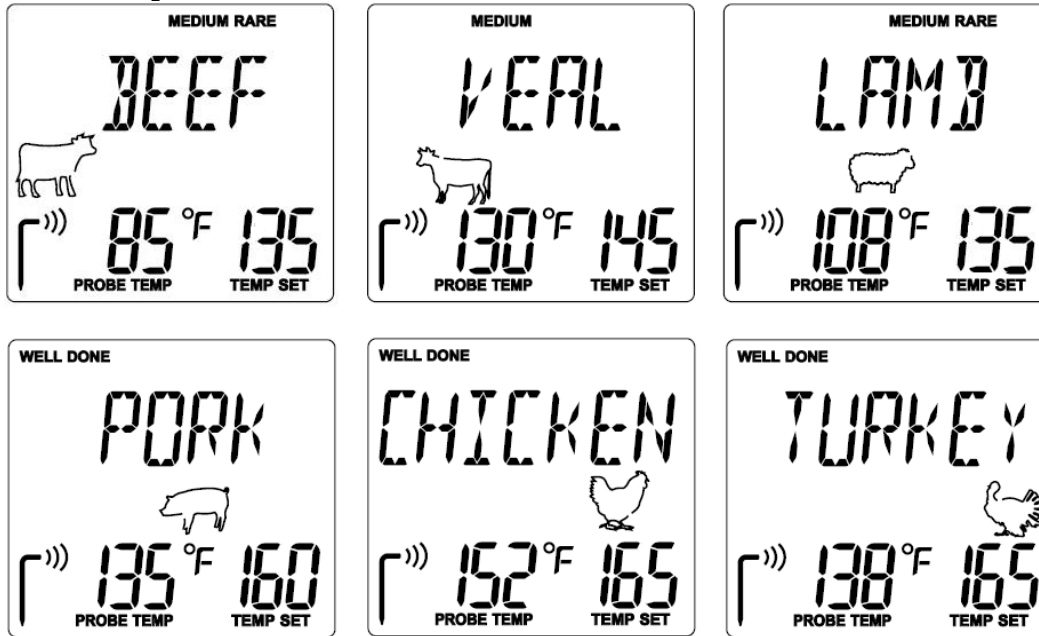
The unit is programmed with selected pre-set temperatures for all types of meats. These temperatures are recommended by both major cookbooks and the USDA for food safety. The chart of the selected temperatures is as follows below:

MEAT		TASTE			
	Type	WELL DONE	MEDIUM	MEDIUM RARE	RARE
Beef	BEEF	160°F	145°F	135°F	125°F
Veal	VEAL	160°F	145°F	N/A	135°F
Lamb	LAMB	160°F	145°F	135°F	125°F
Pork	PORK	160°F	145°F	N/A	N/A
Chicken, whole	CHICK	165°F	N/A	N/A	N/A
Turkey, whole	TURKEY	165°F	N/A	N/A	N/A

TO SELECT A SPECIFIC TYPE OF MEAT: Press the button marked “MEAT” and scroll through the selection until the type of meat (BEEF, VEAL, CHICKEN, ETC) shows on the LCD (display). There will also be the meat icon shown on the display.

TO SELECT YOUR OWN PREFERRED TEMPERATURE: Once you have selected a temperature and food selection – for instance BEEF –RARE – you can customize the temperature setting by using the HR/▲ sign to increase the temperature setting or the MIN/▼ to reduce the temperature setting.

See below examples of what the LCD will look like:



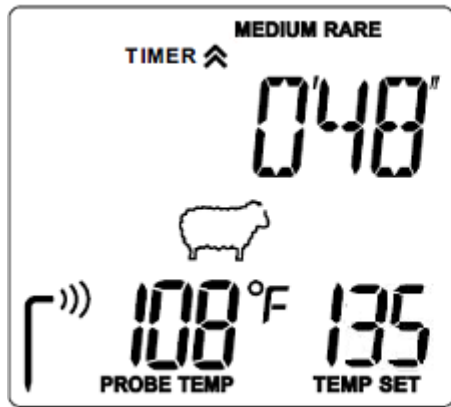
Pre-Alert: When the probe temperature reaches ten degrees to the set temperature of your food the unit will let you know with the voice alert “Your food is almost ready” and the unit will beep twice. The pre-alert will be repeated after four seconds.

Alert: When the probe temperature reaches the set temperature (selected with the meat and taste selection) the unit will beep three times and the voice will say “Your food is ready”. At the same time the alert icon will flash on the face of the unit. To cancel the alert press the STOP button on the unit.

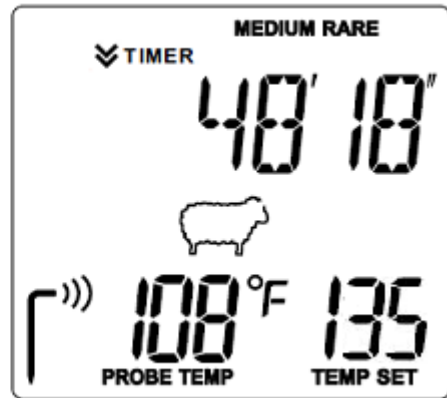
TO USE THE UNIT AS A TIMER:

- Press the MODE button to switch the unit from Thermometer setting to Timer setting.
- Press the clear button if the timer is running so that the timer shows 0:00.
- COUNT UP – To use as a count up timer simply press START. The timer will count up to a maximum of 23:59:59.
- COUNT DOWN – To use as a count down timer set the hour time by pressing the HOUR ▲ to the proper hour. To set the MINUTE press the MIN ▼ to the desired number of minutes. Once the hours and minutes are set press start. The unit will count down to 0 and then beep for 20 seconds and the icons will beep.

**Timer mode (Count up timer /Count down timer)**



Count up timer



Count down timer

THE TIMER CAN BE USED WHILE THE THERMOMETER IS ALSO IN USE. IT WILL RUN IN THE BACKGROUND AND CAN BE VIEWED BY PRESSING THE MODE TO SWITCH BACK FROM TIMER TO THERMOMETER.

**Put the receiver on the transmitter base**

The receiver can stand on the transmitter. (Figure 1)



Figure 1

If you want not to use the grill thermometer, put the receiver and transmitter face to face to combine them as a box for easy storage (Figure 2).



Figure 2

## **HELPFUL HINTS**

If the receiver and/or the transmitter display LLL or HHH instead of the probe temperature, wait for probe to reach room temperature. If LLL or HHH is still displayed it is likely the internal probe wire has shorted out either through moisture or heat damage.

**Do not immerse the probe in water while cleaning.**

**Do not allow the probe or probe wire to come into contact with flames. If cooking with grill cover closed, only use medium or low heat.**

Make sure the probe tip is inserted into the meat at least 1 inch.

If the temperature displayed seems to read too high or the temperature seems to increase too quickly check to make sure the probe tip is not poking through the food to outside. Reposition the probe tip in the center of the thickest part of food. Avoid touching bone or heavy fat areas.

### **Cautions:**

Not Intended for Use by Persons ages 12 and Under.

Always wear a heat resistant glove to touch the stainless steel probe sensor or wire during or just after cooking. Do not touch with bare hands.

Keep the stainless steel probe sensor and wire away from children.

Clean the stainless steel probe and dry thoroughly after each and every use.

Do not use the receiver in the rain, it is not waterproof.

Do not expose the plug of the stainless steel probe or the plug in hole of the transmitter to water or any liquid. This will result in a bad connection and faulty readings.

Do not expose the receiver or transmitter to direct heat or surface.

Do not use stainless steel probe in microwave oven.

The Remote Thermometer registers temperatures as low as 14°F (-10°C) and as high as 482°F (250°C). LLL will be displayed below 14°F and HHH will be displayed above 482°F.

Do not use the stainless steel probe sensor above 410°F.

Doing so will deteriorate the wire.

### **Cleaning**

Always wear a heat resistant glove to touch the stainless steel probe sensor or wire during or just after cooking. Do not touch with bare hands.

Keep the stainless steel probe sensor and wire away from children.

Wash the metal probe tip with hot soapy water and dry thoroughly. Do not immerse the probe in water while cleaning.

Wipe the transmitter and receiver with damp cloth. Do not immerse either in water.

### **Information to user**

“Changes or modifications not expressly approved by the party responsible for compliance could void the users’ authority to operate the equipment”.

Note: This equipment has been tested and found to comply with the limits for a Class B digital device, pursuant to part 15 of the FCC Rules. These limits are designed to provide reasonable protection against harmful interference in a residential installation. This equipment generates, uses and can radiate radio frequency energy and, if not installed and used in accordance with the instructions, may cause harmful interference to radio communications.

However, there is no guarantee that interference will not occur in a particular installation. If this equipment does cause harmful interference to radio or television reception, which can be determined by turning the equipment off and on, the user is encouraged to try to correct the interference by one or more of the following measures:

--Reorient or relocate the receiving antenna.

--Increase the separation between the equipment and receiver.

- Connect the equipment into an outlet on a circuit different from that to which the receiver is connected.
- Consult the dealer or an experienced radio/TV technician for help.

This device complies with part 15 of the FCC Rules. Operation is subject to the following two conditions: (1) this device may not cause harmful interference, and (2) this device must accept any interference received, including interference that may cause undesired operation.

Responsible Party in USA:

Legal Company Name: MAVERICK Industries, Inc.

Address: 94Mayfield Avenue, Edison, New Jersey 08837 USA

Tel: (732) 417-9666

Fax: (732) 417-9673

Email: [help@maverickhousewares.com](mailto:help@maverickhousewares.com)